

**Reissued: 2-June-16**

Model: Enhanced Locked Print NX v2 with CAP	Date: 12-Mar-12	No.: RD602009o
---	-----------------	----------------

**RTB Reissue**

The items in ***bold italics*** were corrected or added.

Subject: Enhanced Locked Print NX v2 with CAP Installation Manual		Prepared by: Kohsuke Tomoyama	
From: Solution Support Sect., Solution Support Dept.			
Classification:	<input type="checkbox"/> Troubleshooting	<input type="checkbox"/> Part information	<input type="checkbox"/> Action required
	<input type="checkbox"/> Mechanical	<input type="checkbox"/> Electrical	<input checked="" type="checkbox"/> Service manual revision
	<input type="checkbox"/> Paper path	<input type="checkbox"/> Transmit/receive	<input type="checkbox"/> Retrofit information
	<input type="checkbox"/> Product Safety	<input type="checkbox"/> Other ( )	<input type="checkbox"/> Tier 2

This RTB has been issued to announce the release of the Enhanced Locked Print NX v2 with CAP Installation Manual.

**Reissued: 2-June-16**

Model: Enhanced Locked Print NX v2 with CAP	Date: 12-Mar-12	No.: RD602009o
---	-----------------	----------------



**Enhanced Locked Print NX v2 with CAP  
Installation Manual**

**Document version: 1.3.1**

**Main Chapters**

Installation ..... 3

- Installation ..... 3
  - Installation (WVGA/4.3-inch operation panel models)..... 3
  - Installation (4-line MFP/4-line LP/LP) ..... 26
  - When Migrate to Card Authentication Package v2 from v1 ..... 32

Uninstallation ..... 36

- Uninstallation..... 36
  - Uninstallation (WVGA/4.3-inch operation panel models) ..... 36
  - Uninstallation (4-line MFP/4-line LP/LP)..... 40

Appendix..... 43

- VM Card Update..... 43
- Procedure for changing the HDD..... 43
- Procedure for changing the controller board ..... 43
- Procedure for changing the Smart Operation Panel..... 44

**Reissued: 21-August-15**

Model: Enhanced Locked Print NX v2 with CAP

Date: 12-Mar-12

No.: RD602009m

# Installation

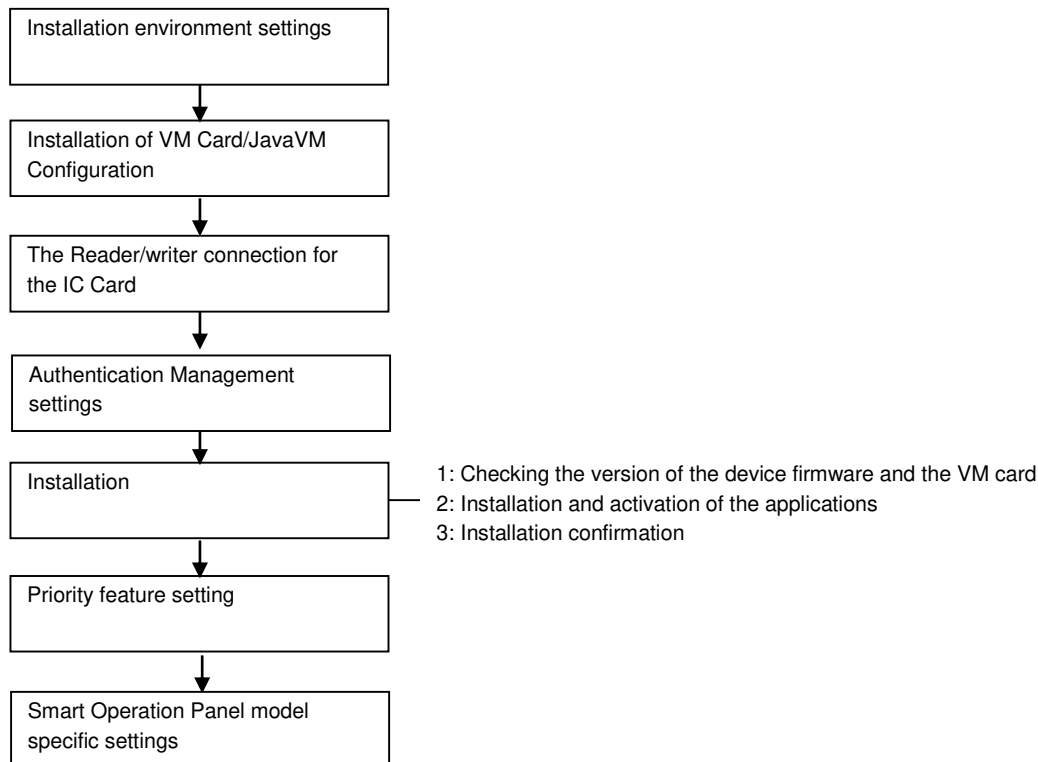
## Installation

Before installation, please make sure the firmwares (GW firmware, Java VM, Smart Operation Panel firmware, and Smart Operation Panel applications) are the latest version. Regarding the firmware update procedures, please refer to the device service manual.

### Installation (WVGA/4.3-inch operation panel models)

- Depending on the device model, the actual operation panel screen may look different from the screenshots used in this document.

### Installation Flowchart



### Installation Environment Settings

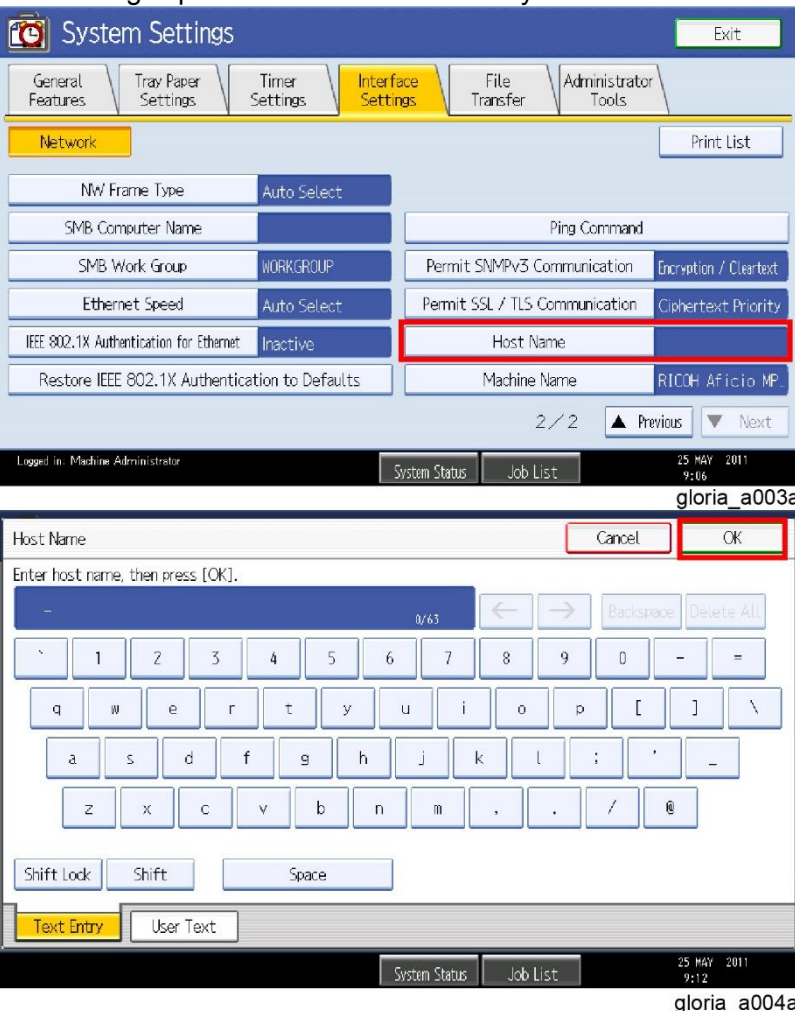
#### 1) Network information

\* Setting from [System Settings] on [User Tools / Counter / Enquiry] screen of the device.

\* In the case of Smart Operation Panel models, [User Tools] must be selected first and then the [User Tools / Counter / Enquiry] screen is displayed.

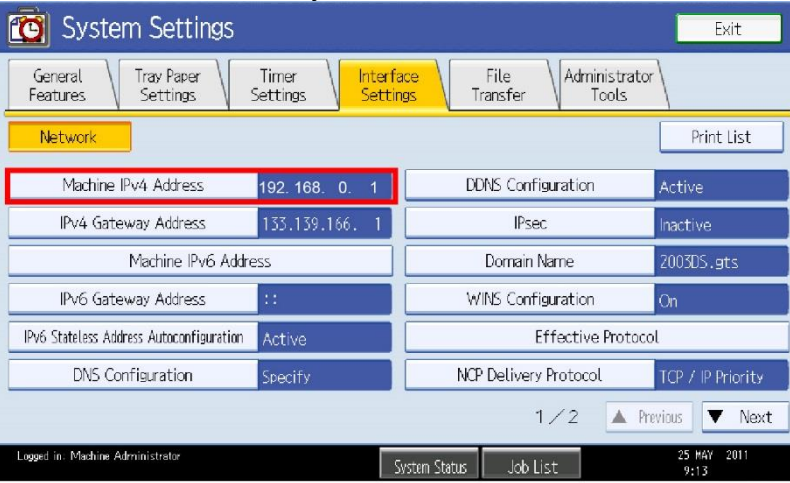
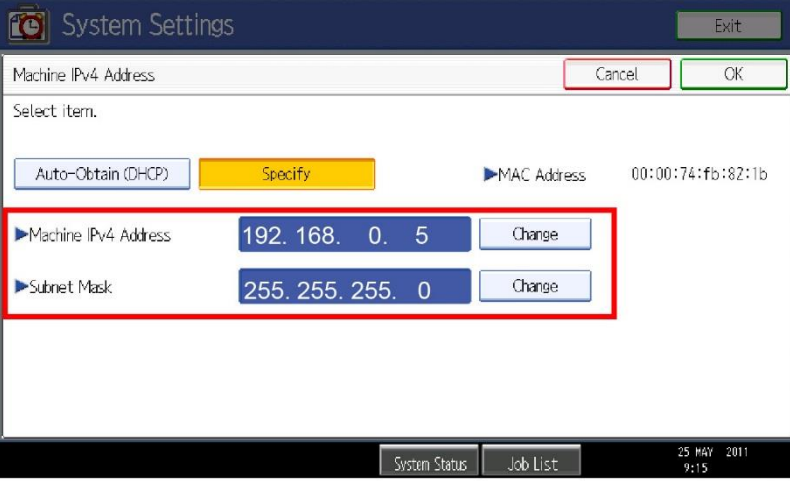
**Reissued: 21-August-15**

Model: Enhanced Locked Print NX v2 with CAP	Date: 12-Mar-12	No.: RD602009m
---	-----------------	----------------

Item	Detailed descriptions	Default/Remarks
Host Name	<p>Set the host name shown on [Interface Settings] tab. This setting is performed on the screen keyboard.</p>  <p>The screenshot shows the 'System Settings' application with the 'Interface Settings' tab selected. Under the 'Network' section, the 'Host Name' field is highlighted with a red rectangle. Below this, a second screenshot shows the 'Host Name' dialog box with the 'OK' button highlighted in red. The dialog box contains a text input field with a cursor and a numeric keypad.</p>	-

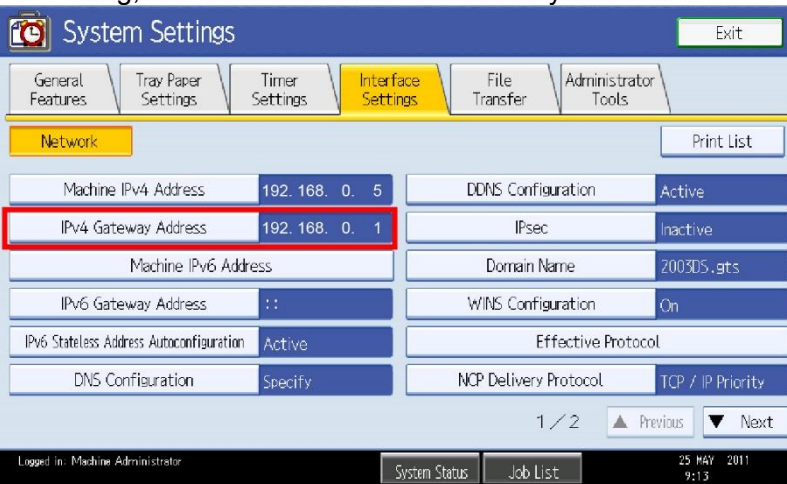
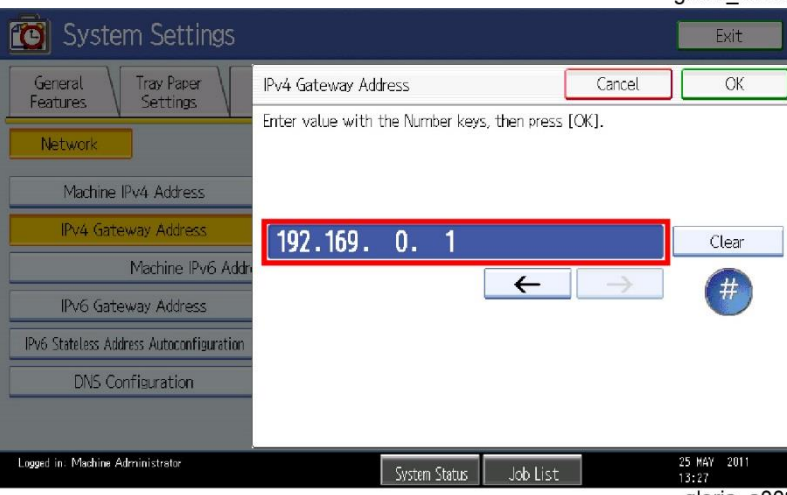
**Reissued: 21-August-15**

Model: Enhanced Locked Print NX v2 with CAP	Date: 12-Mar-12	No.: RD602009m
---	-----------------	----------------

Item	Detailed descriptions	Default/Remarks
<p>IP Address/Subnet Mask</p>	<p>Set the IP address and the subnet mask that appear when [Machine IPv4 Address] in [Interface settings] tab is selected. For setting, press [Specify] and [Change], and then enter the addresses with the 10-key.</p>  	<p>-</p>

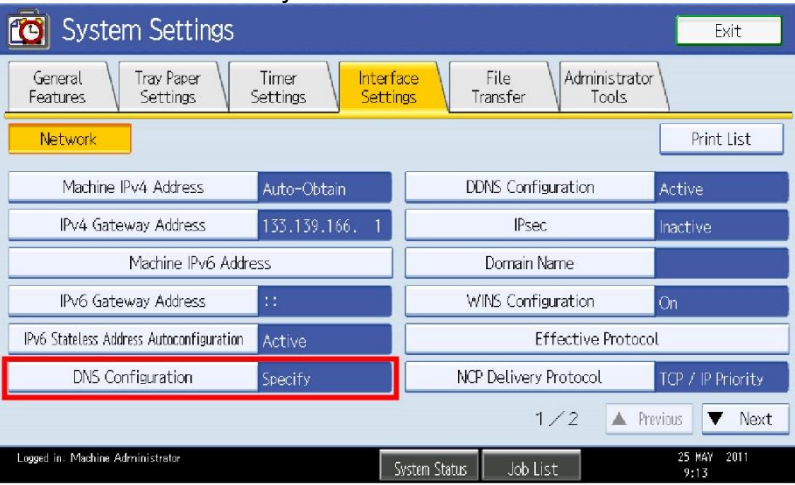
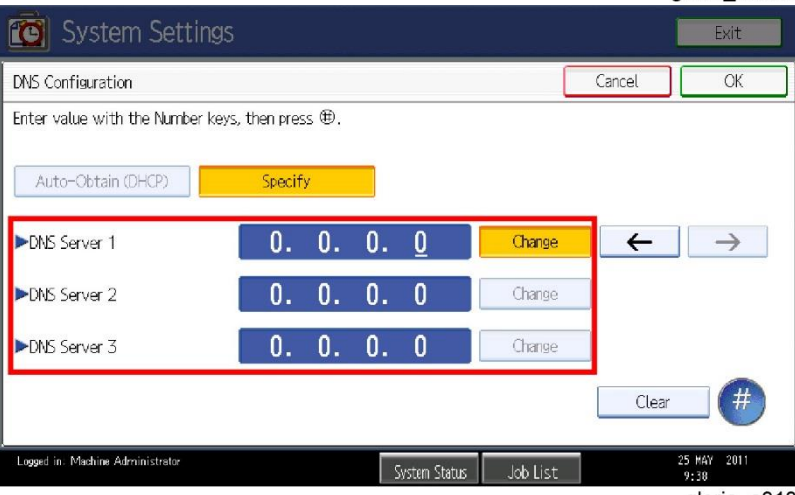
**Reissued: 21-August-15**

Model: Enhanced Locked Print NX v2 with CAP	Date: 12-Mar-12	No.: RD602009m
---	-----------------	----------------

Item	Detailed descriptions	Default/Remarks
Default Gateway	<p>Set the address that appears when [IPv4 Gateway Address] in [Interface Settings] tab is selected. For setting, enter the address with the 10-key.</p>  <p>The screenshot shows the 'System Settings' window with the 'Interface Settings' tab selected. Under the 'Network' section, the 'IPv4 Gateway Address' is highlighted with a red box and set to '192.168.0.1'. Other settings like 'Machine IPv4 Address' (192.168.0.5) and 'Machine IPv6 Address' are also visible.</p>  <p>The second screenshot shows the 'IPv4 Gateway Address' input dialog. The text '192.169.0.1' is entered into the input field, which is highlighted with a red box. The dialog includes 'Cancel' and 'OK' buttons and a numeric keypad.</p>	-

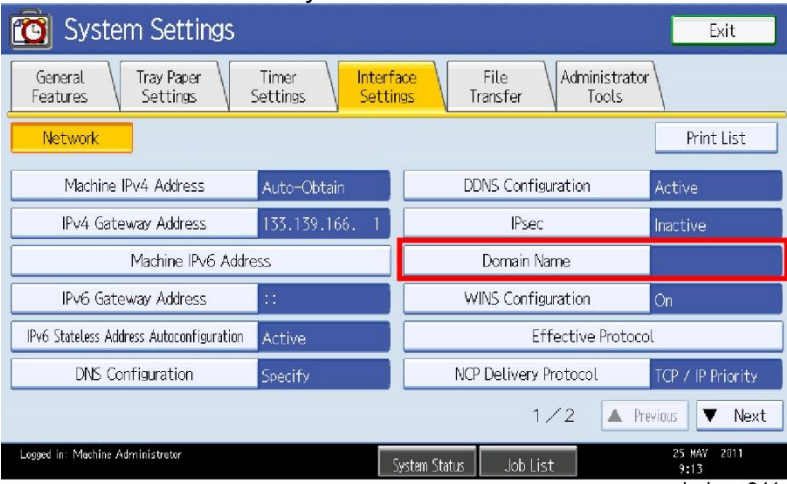
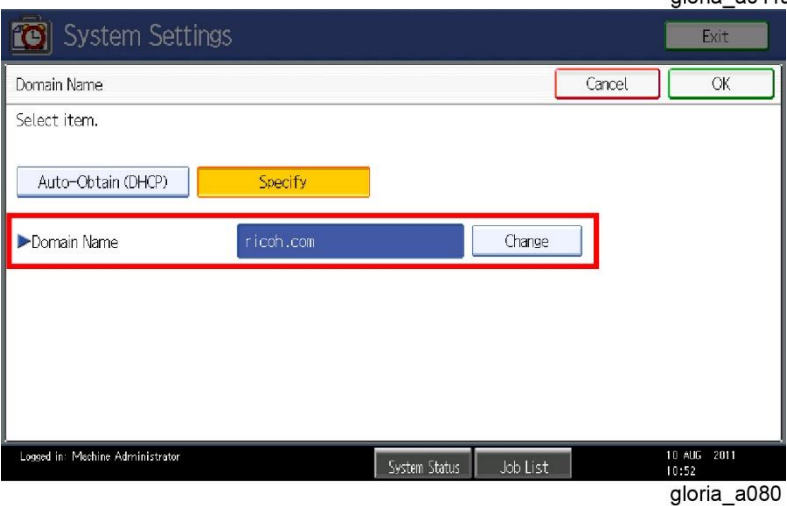
**Reissued: 21-August-15**

Model: Enhanced Locked Print NX v2 with CAP	Date: 12-Mar-12	No.: RD602009m
---	-----------------	----------------

Item	Detailed descriptions	Default/Remarks
DNS Server 1/DNS Server 2/DNS Server 3	<p>Set the server address that appears when [DNS Configuration] in [Interface Settings] tab is selected. For setting, press [Specify] and [Change], and then enter the address with the 10-key.</p>  	-

**Reissued: 21-August-15**

Model: Enhanced Locked Print NX v2 with CAP	Date: 12-Mar-12	No.: RD602009m
---	-----------------	----------------

Item	Detailed descriptions	Default/Remarks
Domain Name	<p>Set the name that appears when [Domain Name] in [Interface Settings] tab is selected. For setting, press [Specify] and [Change], and then enter the name with the screen keyboard.</p>  	-

**2) Timer Setting**

\* Setting from [System Settings] on [User Tools / Counter / Enquiry] screen of the device.

Item	Detailed descriptions	Default/Remarks
Auto Logout Timer	<p>The default value is [Off], however press [Auto Logout Timer] in [Timer Settings] tab and select [On] to enter the logout time if necessary to change it. The range of entering the automatic logout time is from 60 to 999 seconds.</p>	Default: [Off]



**Reissued: 21-August-15**

Model: Enhanced Locked Print NX v2 with CAP	Date: 12-Mar-12	No.: RD602009m
---	-----------------	----------------

Installation of VM Card

↓ Note

- If the JavaVM is installed to the device's Flash Memory (FM), this procedure is not necessary. In this case, please proceed to the "JavaVM Configuration".

1. Set [Auto Off Timer] to 5 minutes in [User Tools / Counter / Enquiry] screen → [System Settings] → [Timer Settings] tab.

↓ Note

- [Auto Off Timer] at the device side should be set to 5 minutes to prevent the device from entering the Auto Off mode while the Java™ Platform is installing or activating.

2. Set [System Auto Reset Timer] to [Off] in [User Tools / Counter / Enquiry] screen → [System Settings] → [Timer Settings] tab.

↓ Note

- This setting should be restored after the installation.

3. Turn off the main power of the device.
4. Insert the VM card into the SD card slot.

↓ Note

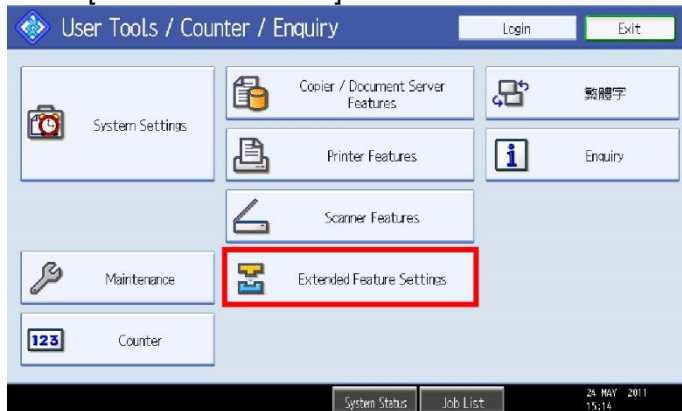
- For which the SD card slot should be inserted into, see the service manual of each machine.

5. Turn on the main power of the device.

↓ Note

- The Java™ Platform is installed automatically if the main power of the device is turned on after the VM card insertion.
- It takes for approx. 3 to 4 minutes to install it automatically.
- Never turn off the power of the device during the installation, otherwise the VM card may be damaged. Turn off the power after the confirmation in step 8 has been done.

6. Press [User Tools/Counter] button.

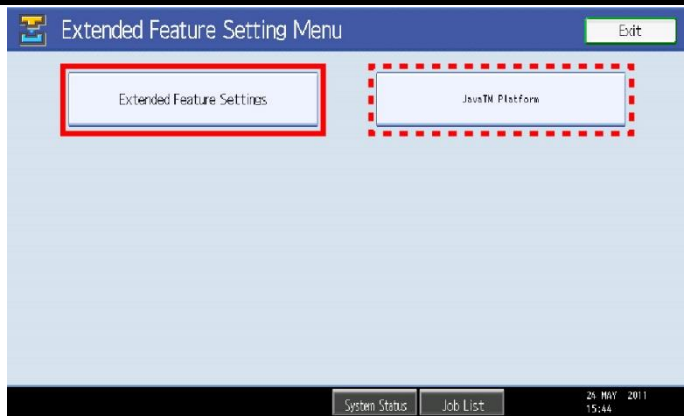


gloria\_a013a

7. Press [Extended Feature Settings] in [User Tools / Counter / Enquiry] screen.

**Reissued: 21-August-15**

Model: Enhanced Locked Print NX v2 with CAP	Date: 12-Mar-12	No.: RD602009m
---	-----------------	----------------

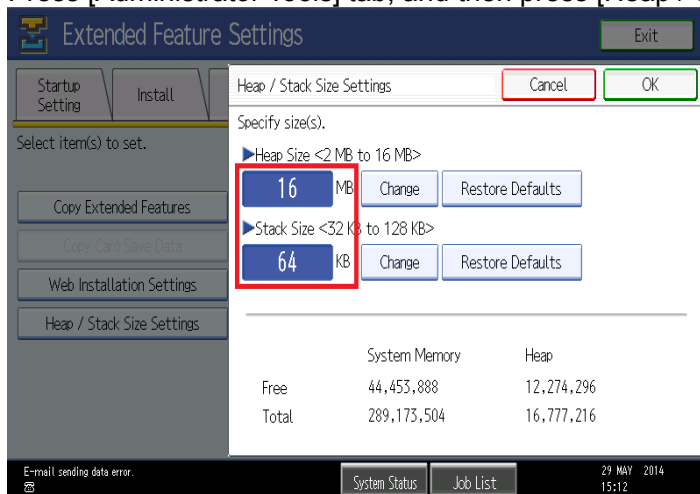


gloria\_a014a

- Confirm on [Extended Feature Setting Menu] screen that [Java™ Platform] appears after the installation is completed normally.

**JavaVM Configuration**

- Press [User Tools/Counter] button.  
Press [Extended Feature Settings] after [User Tools / Counter / Enquiry] screen appears.
- Press [Extended Feature Settings].
- Press [Administrator Tools] tab, and then press [Heap / Stack Size Settings].



gloria\_a015

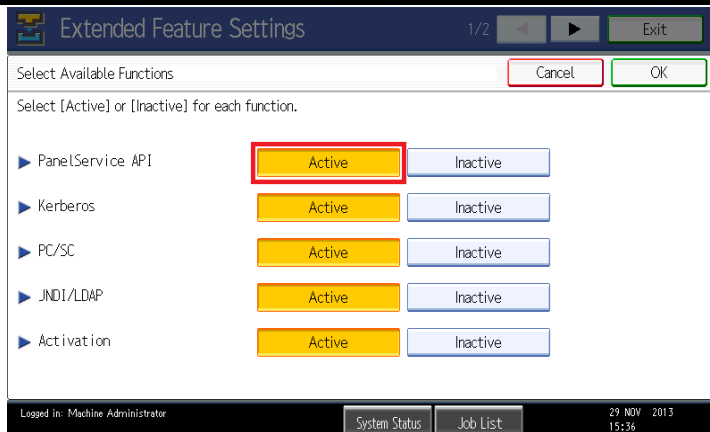
Set the heap size and stack size.

Model	Heap size	Stack size
11S or earlier	16MB (Default: 10MB)	64KB (Default: 64KB)
11A or later	48MB (Default: 16MB)	Do not change from default size (Default: 256KB)

- Press the [Administrator Tools] tab, and then press [Select Available Functions].
- Set [PanelService API] as [Active].

**Reissued: 21-August-15**

Model: Enhanced Locked Print NX v2 with CAP	Date: 12-Mar-12	No.: RD602009m
---	-----------------	----------------



6. Finish the initial settings.
7. Push the power button at the side of the operation section. After the power indicator has finished blinking, turn off the main power.

**Note**

- The VM card should be operated with setting in the SD card slot.
- Restore the original setting after installation if [System Auto Reset Timer] is changed.

**IC Card Reader/Writer Connection**

**Note**

- The installation should be executed after the main power is turned off.

**Note**

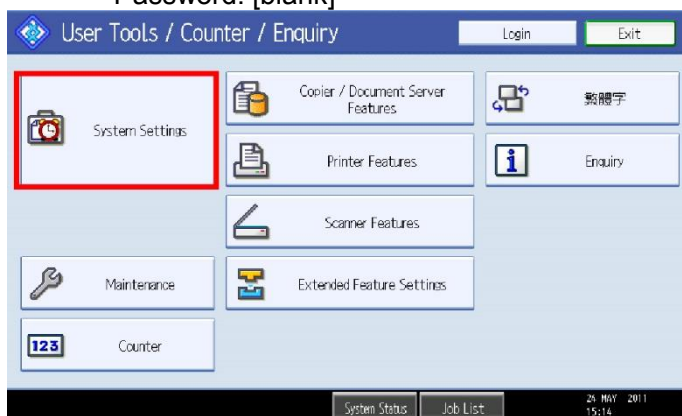
- Connect the USB cable to the left USB port for Aficio MP C5000/C4000/C3300/C2800, Aficio MP C2550/C2050.
- For other machines, either port can be connectable.
- **Regarding NFC Card Reader installation, please refer to the service manual for each model.**

**Authentication Management Settings**

1. Log in to the device as an administrator.

**Note**

- The initial value of login is as follows:
  - Login user name: admin
  - Password: [blank]

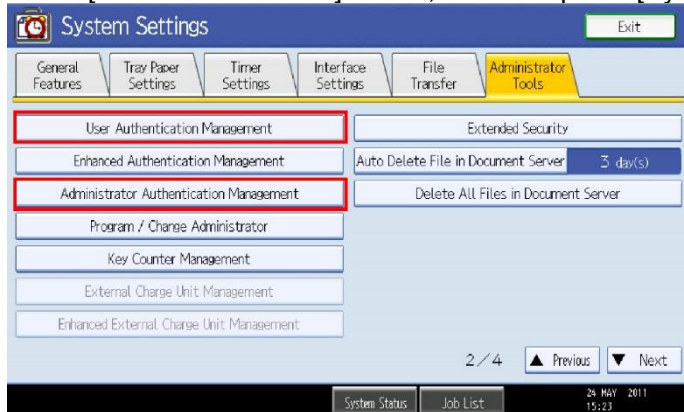


gloria\_a019a

**Reissued: 21-August-15**

Model: Enhanced Locked Print NX v2 with CAP	Date: 12-Mar-12	No.: RD602009m
---	-----------------	----------------

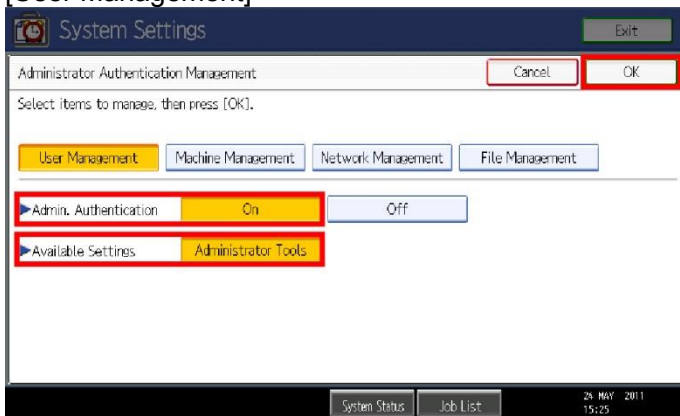
2. Press [User Tools/Counter] button, and then press [System Settings].



gloria\_a020a

3. Press [Administrator Tools] tab, and set the items below.  
 [Administrator Authentication Management]  
 [User Authentication Management]

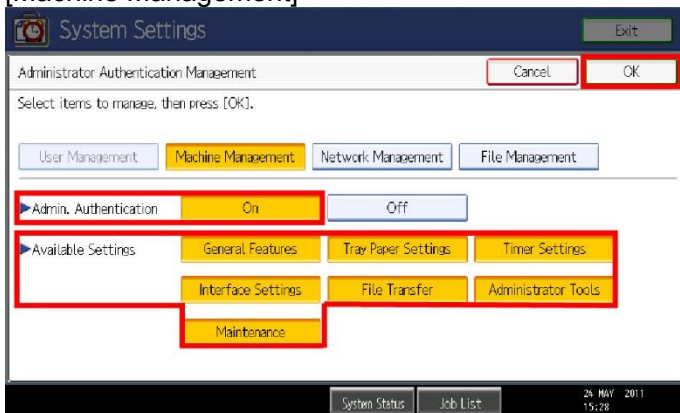
**1) Administrator Authentication Management**  
**[User Management]**



gloria\_a021a

1. Select [On] at [Admin. Authentication].  
 2. Press [Administrator Tools] at [Available Settings].  
 3. Press [OK] in the upper-right of the screen to enable the changes.

**[Machine Management]**



gloria\_a022a

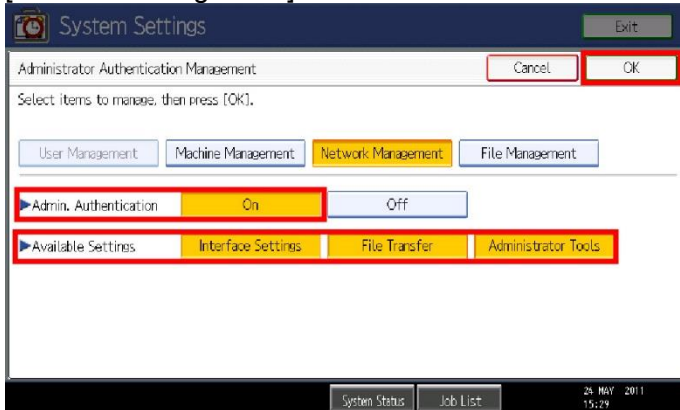
1. Select [On] at [Admin. Authentication].  
 2. Press the following items at [Available Settings].  
 [General Features] [Tray Paper Settings] [Timer Settings]

**Reissued: 21-August-15**

Model: Enhanced Locked Print NX v2 with CAP	Date: 12-Mar-12	No.: RD602009m
---	-----------------	----------------

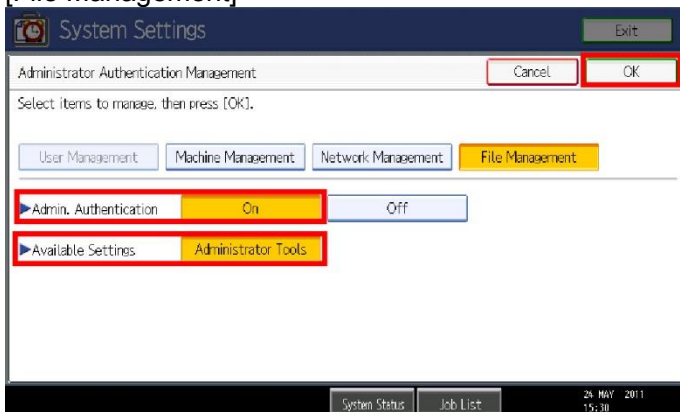
[Interface Settings] [File Transfer] [Administrator Tools]  
[Maintenance]

3. Press [OK] in the upper-right of the screen to enable the changes.  
[Network Management]



gloria\_a023a

1. Select [On] at [Admin. Authentication].
2. Press the following items at [Available Settings].  
[Interface Settings] [File Transfer] [Administrator Tools]
3. Press [OK] in the upper-right of the screen to enable the changes.  
[File Management]



gloria\_a024a

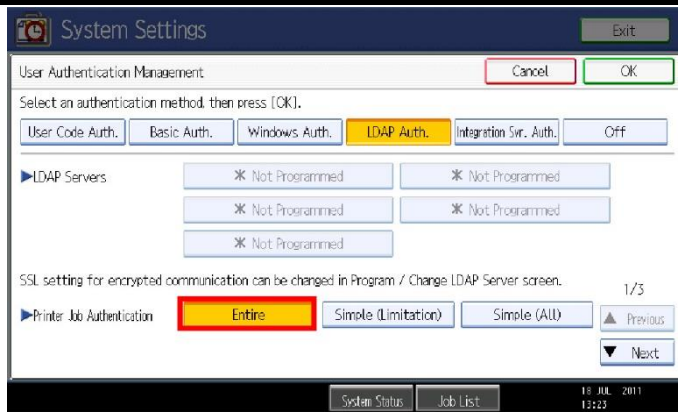
1. Select [On] at [Admin. Authentication].
2. Press [Administrator Tools] at [Available Settings].
3. Press [OK] in the upper-right of the screen to enable the changes.

**2) User Authentication Management**

1. Confirm whether the method of the authentication is "Custom" or "LDAP".

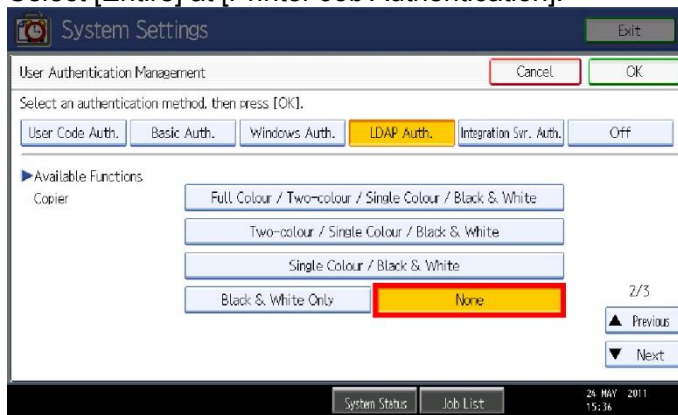
**Reissued: 21-August-15**

Model: Enhanced Locked Print NX v2 with CAP	Date: 12-Mar-12	No.: RD602009m
---	-----------------	----------------



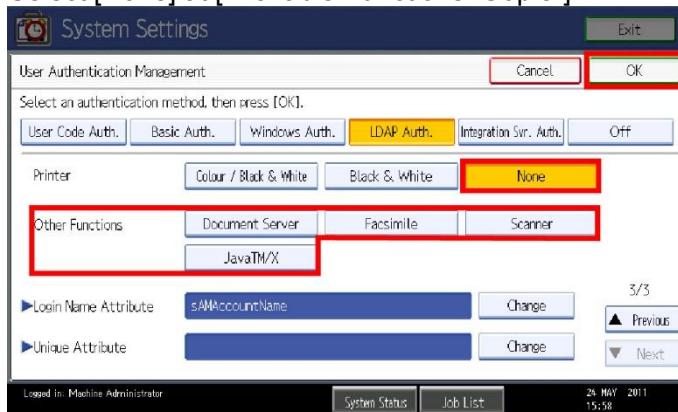
gloria\_a059

2. Select [Entire] at [Printer Job Authentication].



gloria\_a025

3. Select [None] at [Available Functions: Copier].



gloria\_a026a

4. Select [None] at [Available Functions: Printer].
5. Cancel the following items at [Available Functions: Other Functions].  
[Document Server] [Facsimile] [Scanner]  
[JavaTM/X]
6. Press [OK] in the upper-right of the screen to enable the changes.  
Turn off and on the main power, after the settings of [Administrator Authentication Management] and [User Authentication Management] are finished.

**Installation of Enhanced Locked Print NX V2 with CAP**

Install the following applications using Remote Install Manager to install Enhanced Locked Print NX V2 with CAP. For the installations procedures of these applications, see the service manual of Remote

**Reissued: 21-August-15**

Model: Enhanced Locked Print NX v2 with CAP	Date: 12-Mar-12	No.: RD602009m
---	-----------------	----------------

Install Manager. (Remote Install Manager)

↓ Note

- Regarding the installation method for Smart Operation Panel models (Compatibility mode), it is necessary to perform offline installation via RIM. It is not possible for the eDC-I system to judge which application module type (MP\*\*: Compatibility mode / Z\*\*: Hybrid mode) should be installed to devices equipped with the Smart Operation Panel. It is possible for Hybrid mode to perform online/offline installation via RIM.

↓ Note

- In the case of Smart Operation Panel models (Hybrid mode), it is necessary to install 2 modules for CAP before activation when conducting offline installation: one for CAP authentication and one for the CAP User Config. Tool. The CAP User Config. Tool is used only when the authentication type is Local DB or CAP-ES (Internal user). If the authentication type is AD, LDAP, or CAP-ES (only external user), it is not necessary to install the module for CAP User Config. Tool.

↓ Note

- In the case of 12A models (MET-C1, CH-C1, OR-C2), before installing ELP-NX v2, make sure that at least one SD card slot located on the rear side of the device (option slot or service slot) is empty. For details, please also refer to the RTB "Enhanced Locked Print NX v2 Installation to 12A Models (MET-C1, CH-C1, OR-C2)". Other models (11A or earlier and 12A or later models) are not affected.

In the case of Standard Operation Panel and Smart Operation Panel (Compatibility mode):

Application	Version	Note
CAP V2 MP11/MP21/MP31/SP31	V2.x	MP11 (WVGA models) MP21 (4-line LCD LP models) MP31 (12A or older 4.3-inch operation panel MFP models) SP31 (12S or later 4.3-inch operation panel LP models)
ELP-NX V2 MP11/MP12/MP31/SP31 /MP33/SP13	V2.x	MP11 (12S or older WVGA models) MP12 (12A or later WVGA models) MP31 (12A or older 4.3-inch operation panel MFP models) SP31 (12S or later 4.3-inch operation panel LP models) MP33 (15S or later 4.3-inch operation panel LP models) SP13 (15S or later 4-line LCD LP models)
CAP LAUNCHER	V2.x	
CAP	V2.x	
ELP NX	V2.x	
CAP REG	V2.x	
FR Filter	V1.x	08S or older models must install the FR Filter manually.

In the case of Smart Operation Panel (Hybrid mode):

**Reissued: 21-August-15**

Model: Enhanced Locked Print NX v2 with CAP	Date: 12-Mar-12	No.: RD602009m
---	-----------------	----------------

Application	Version	Note
CAP V2 Z11	V2.x	
ELP-NX V2 Z12	V2.x	
CAP	V2.x	
ELP Service	V2.x	
FR Filter	V1.x	
ELP NX	V1.x	Smart Operation Panel application.
CAP V2 Auth. UI	V1.x	Smart Operation Panel application.
CAP User Config.	V1.x	Smart Operation Panel application.
CAP NFC Plug-in	V1.x	Smart Operation Panel application. Only for v2.3.0 or later.

**Installation of FR Filter**

---

↓ Note

- Note that using Remote Install Manager will install the FR Filter automatically for 08A or later models.

1. Press [User Tools/Counter] button.
2. Press [Extended Feature Settings] in [User Tools / Counter / Enquiry] screen.
3. Confirm on [Extended Feature Setting Menu] screen that [Java™ Platform] appears.

↓ Note

- If [Java™ Platform] is not shown, the Java™ Platform has not activated yet. Wait for a while until [Java™ Platform] appears.
4. Press [Extended Feature Settings].
  5. Press [Install] tab and then press [SD card].
  6. Select [FR Filter] in the applications list.
  7. Select [Machine HDD] for the install location and press [Next].
  8. Confirm the information on the screen and press [OK] to start the installation.
  9. Press [Exit] on the installation completion screen.
  10. Push the power button at the side of the operation section. After the power indicator has finished blinking, turn off the main power.

**Activation Check**

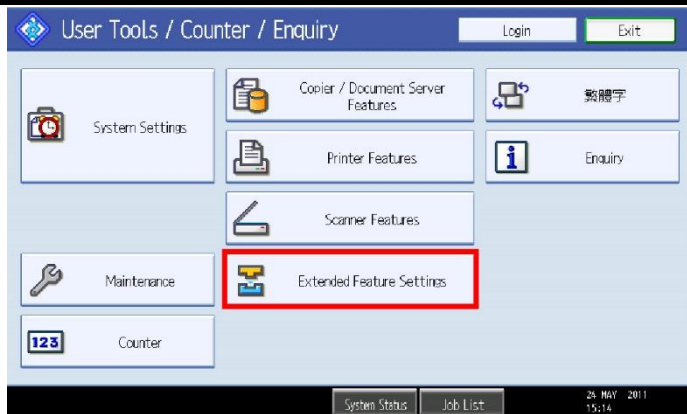
---

1. After installing CAP v2 and ELP-NX v2 via Remote Install Manager, please wait 5 minutes before confirming the activation (step 3) because the start process is performed internally.
2. In the case of CAP v2 (Hybrid mode), restart the device manually to enable authentication internally.
3. Press [User Tools/Counter] button, and then press [Extended Feature Settings].

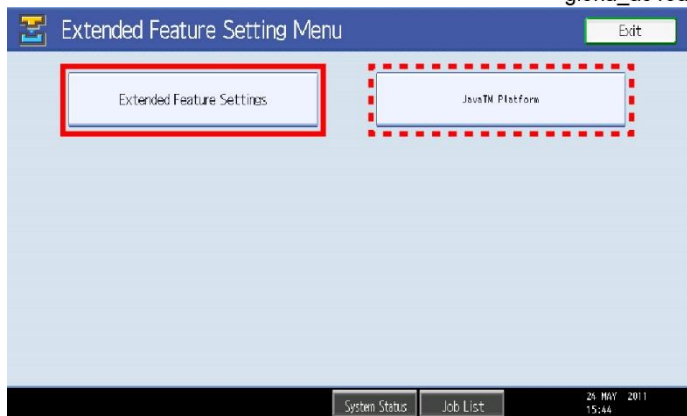


Reissued: 21-August-15

Model: Enhanced Locked Print NX v2 with CAP	Date: 12-Mar-12	No.: RD602009m
---	-----------------	----------------



gloria\_a013a



gloria\_a014a

- 4. Confirm on [Extended Feature Setting Menu] screen that [JavaTM Platform] appears.

↓ Note

- If [JavaTM Platform] is not shown, the Java™ Platform has not activated yet. Wait for a while until [JavaTM Platform] appears.

- 5. Press [Extended Feature Settings].



gloria\_ap004

**Reissued: 21-August-15**

Model: Enhanced Locked Print NX v2 with CAP	Date: 12-Mar-12	No.: RD602009m
---	-----------------	----------------



gloria\_ap005

6. Confirm on [Startup Setting] tab that the condition of each application is the same as below:  
In the case of Standard Operation Panel and Smart Operation Panel (Compatibility mode):

Application	Status
CAP V2 MP11/MP21/MP31/SP31	Starting Up
ELP-NX V2 MP11/MP12/MP31/SP31	Starting Up
CAP LAUNCHER	Suspend <a href="#">Note</a> The Launcher is disabled by default. Please set it as the "Priority" application to enable it. The Launcher is not supported on 4.3-inch operation panel models.
CAP	Starting Up
ELP NX	Suspend
CAP REG	Stop
JavaTM Platform	Starting Up
FRFilter	Waiting

In the case of Smart Operation Panel (Hybrid mode):

Application	Status
CAP V2 Z11	Starting Up
ELP-NX V2 Z12	Starting Up
CAP	Starting Up
ELP Service	Starting Up
JavaTM Platform	Starting Up

**Reissued: 21-August-15**

Model: Enhanced Locked Print NX v2 with CAP	Date: 12-Mar-12	No.: RD602009m
---	-----------------	----------------

Application	Status
FR Filter	Waiting

In the case of Smart Operation Panel (Hybrid mode), please also check whether the following applications are installed in Screen Features → Screen Device Settings Information → Software Version List:

Application	Note
ELP NX	
CAP V2 Auth. UI	
CAP User Config.	
CAP NFC plug-in	Only for v2.3.0 or later.

**Note**

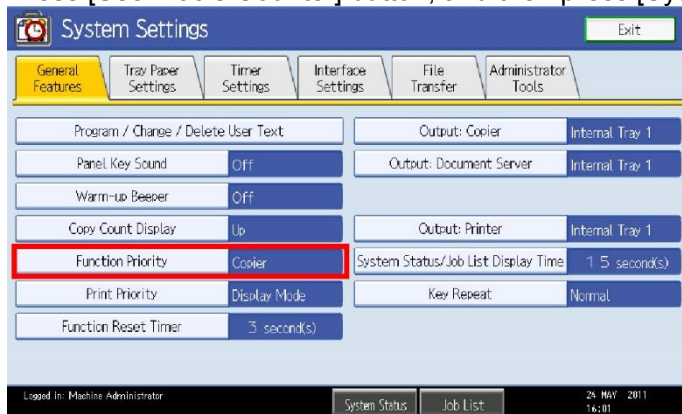
The following SP modes are automatically set whenever the applications are started up (Every time when the machine power is turned on). In the case of Smart Operation Panel models, press the [x] button on the login screen and select the [Printer] icon after logging out, and then go in to SP mode. It is not possible to log in to SP mode from User Tools or Quick application (such as Quick Copy) and when logged into the device.

- SP5-401-103: [0] → [3]
- SP5-401-162: bit0 [0] → [1], bit5 [0] → [1] \*
- SP5-401-230: bit0 [0] → [1]
- SP5-401-240: bit0 [0] → [1]

\*The bit6 of SP5-401-162 is changed from [0] to [1] at the first time when an IC card is touched. However, this is a normal action.

**Priority Feature Setting (In the case of Standard Operation Panel models)**

1. Press [User Tools/Counter] button, and then press [System Settings].



gloria\_a027

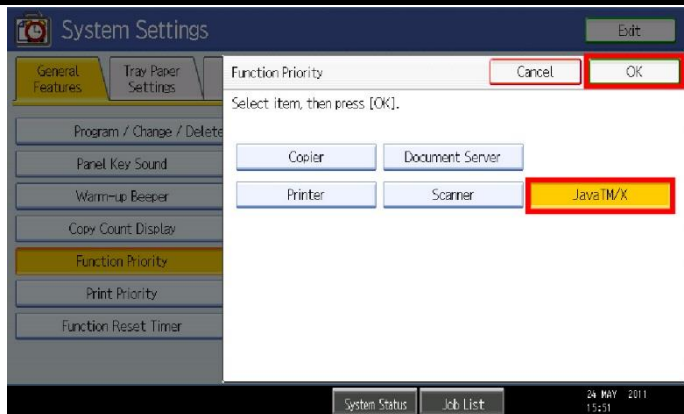
2. Press [General Features] tab, and then press [Function Priority].

**Reissued: 21-August-15**

Model: Enhanced Locked Print NX v2 with CAP

Date: 12-Mar-12

No.: RD602009m



gloria\_a028a

3. Select [Java TM/X] and press [OK].

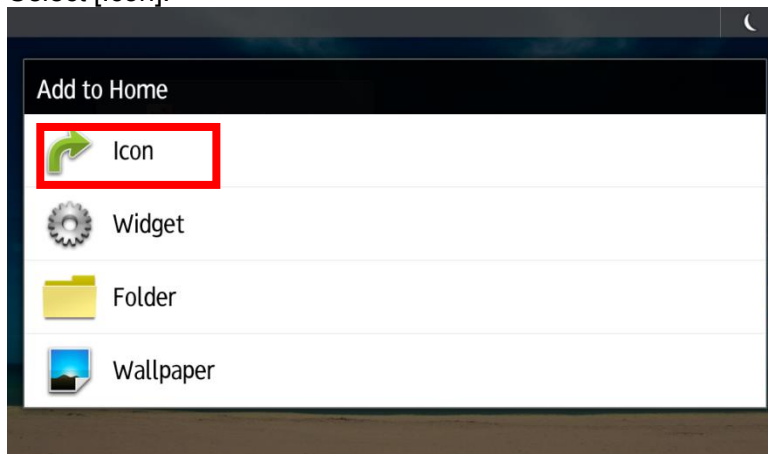
### Smart Operation Panel model specific settings

---

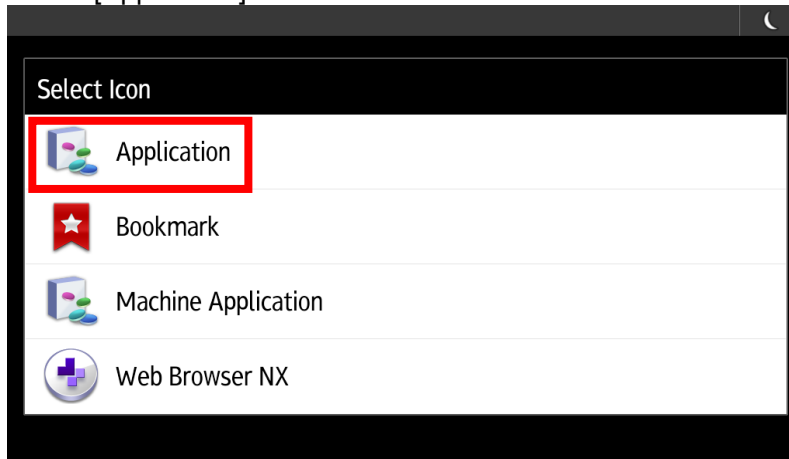
#### Icon Setting (Only for Hybrid mode):

ELP-NX and CAP User Config. Tool can be displayed on Home screen.

1. Log in to the MFP as an Administrator.
2. Press and hold Home screen. The [Add to Home] screen will appear.
3. Select [Icon].



4. Select [Application].



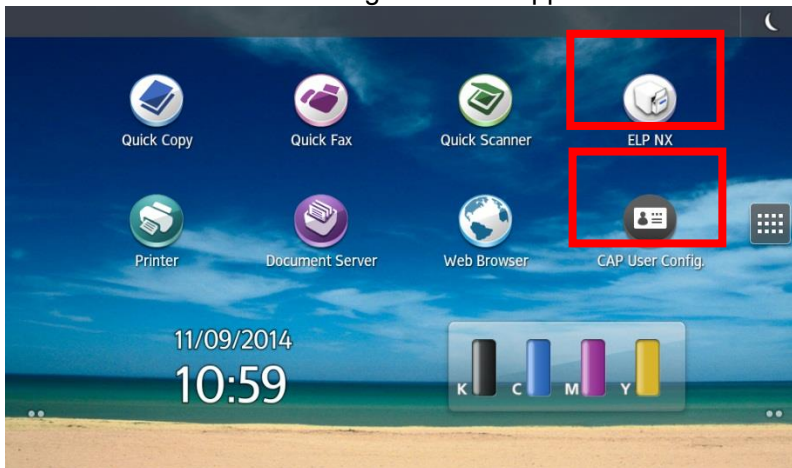
**Reissued: 21-August-15**

Model: Enhanced Locked Print NX v2 with CAP	Date: 12-Mar-12	No.: RD602009m
---	-----------------	----------------

5. Select [ELP NX]. If CAP User Config. Tool is installed, please also select [CAP User Config.].



6. ELP NX and CAP User Config. icons will appear.



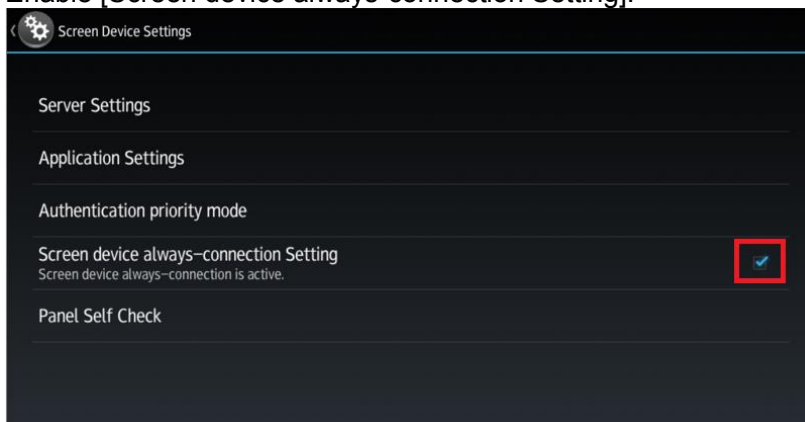
**Screen device always-connection Setting (15S or later models)**

1. Shift to Screen service mode.

[↓ Note](#)

For information on how to enter Screen service mode, contact the supervisor in your branch office.

2. Select [Screen Device Settings].
3. Enable [Screen device always-connection Setting].



**Recommendation: Energy Saving Recovery for Business Application setting (15S or later models)**

**Reissued: 21-August-15**

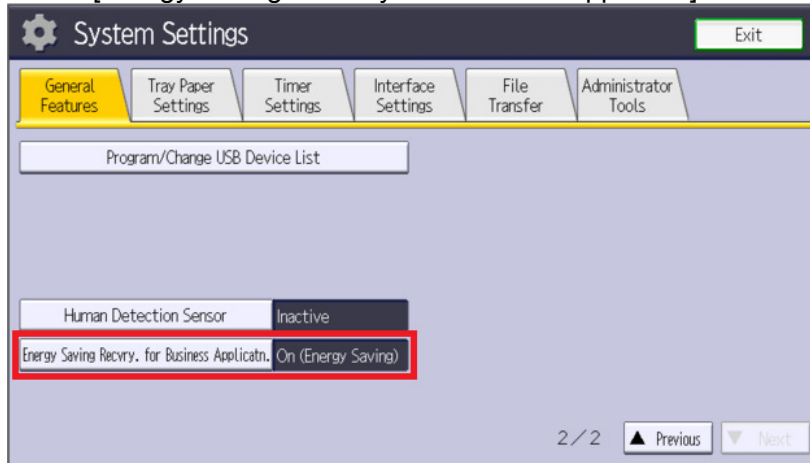
Model: Enhanced Locked Print NX v2 with CAP

Date: 12-Mar-12

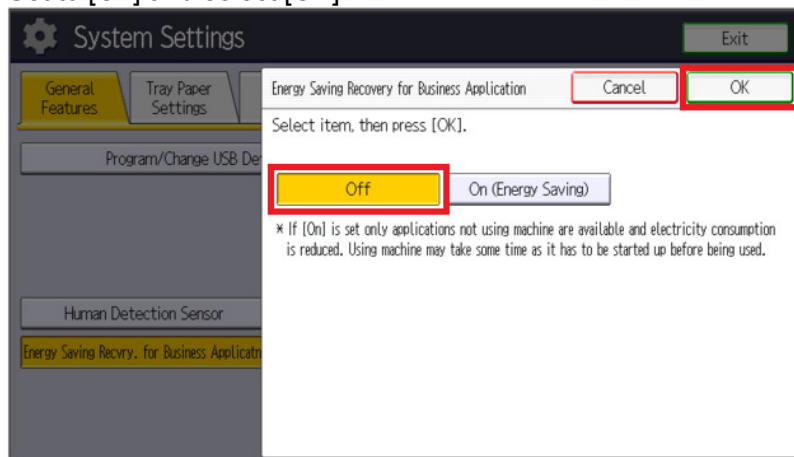
No.: RD602009m

If the setting is "On", login or job list acquisition may be little slow at the first time after recovering the energy saving. We recommend setting this as "Off".

1. Log in to the MFP as an Administrator.
2. Select [User Tools].
3. Select [Machine Features].
4. Select [System Settings].
5. Select [Energy Saving Recovry. for Business Applicatn.].



6. Set to [Off] and select [OK].

**Priority Feature Setting (For Compatibility and Hybrid mode):**

It is possible to select either CAP LAUNCHER (only for compatibility mode) or ELP NX as a default application when a user logs in to the device.

How to configure Function Priority:

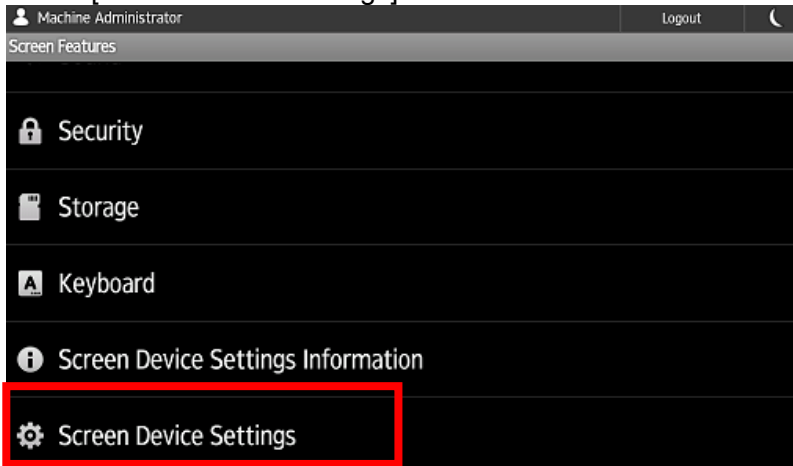
1. Log in to the MFP as an Administrator.
2. Select [Screen Features].

**Reissued: 21-August-15**

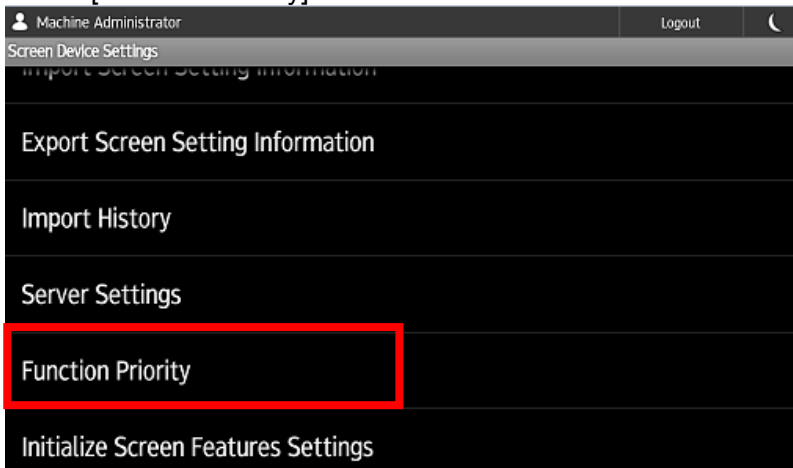
Model: Enhanced Locked Print NX v2 with CAP	Date: 12-Mar-12	No.: RD602009m
---	-----------------	----------------



- 3. Select [Screen Device Settings].



- 4. Select [Function Priority].



- 5. In the case of Compatibility mode, select [ELP NX] or [CAP LAUNCHER]. In the case of Hybrid mode, select [ELP NX].

**Reissued: 21-August-15**

Model: Enhanced Locked Print NX v2 with CAP	Date: 12-Mar-12	No.: RD602009m
---	-----------------	----------------



**In the case of Compatibility mode:**

**In the case of selecting CAP LAUNCHER for Function Priority:**

It is possible to register IC cards automatically. It is not possible to display the Job list screen directly after logging in.

**In the case of selecting ELP NX for Function Priority:**

It is not possible to register IC cards automatically. It is possible to display the Job list screen directly after logging in. To register an IC card, please use CAP REG. If CAP LAUNCHER is used, an authentication error will occur when an unregistered IC card is swiped.

For details, please refer to the Technical Reference for CAP V2 → Configuration.ppt → Appendix. GK FAQID:179654 [TR] CAP/ELP-NX/CAP-ES/ELP-NX FS V2: Top page (RAC RE RA RCN )

**Authentication priority mode (For Hybrid mode):**

When a device is in sleep mode, it takes more time for a user's job list to be displayed after the user swipes their IC card on Smart Operation Panel models for Hybrid mode than it does on Standard Operation Panel models and Smart Operation Panel models (Compatibility mode).

By setting the Authentication priority mode via the Screen service mode, the print job display for Hybrid mode is about as fast as the Standard Operation Panel models and Smart Operation Panel models (Compatibility mode). This setting means the HDD always starts within a designated time and it takes little time to authenticate the user information. However, this may negatively affect the TEC value (TEC = Typical Electricity Consumption). The procedure for setting it is as follows.

1. Shift to Screen service mode.



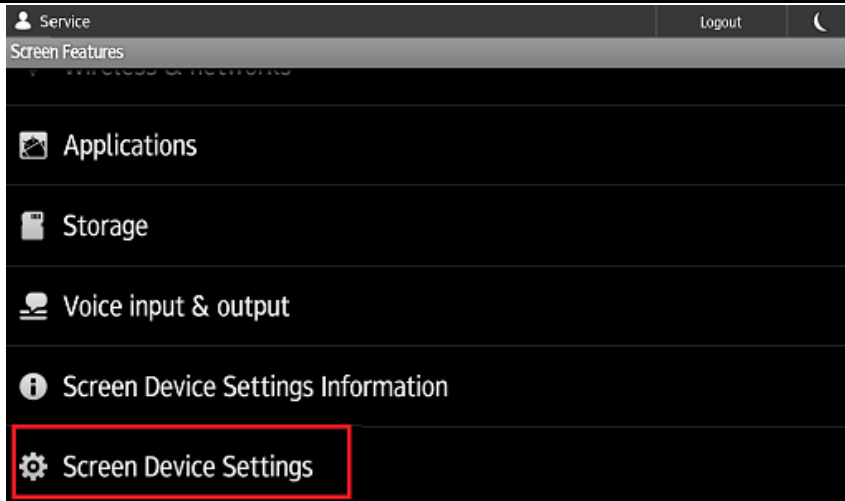
- For information on how to enter Screen service mode, contact the supervisor in your branch office.

2. Select [Screen Device Settings].

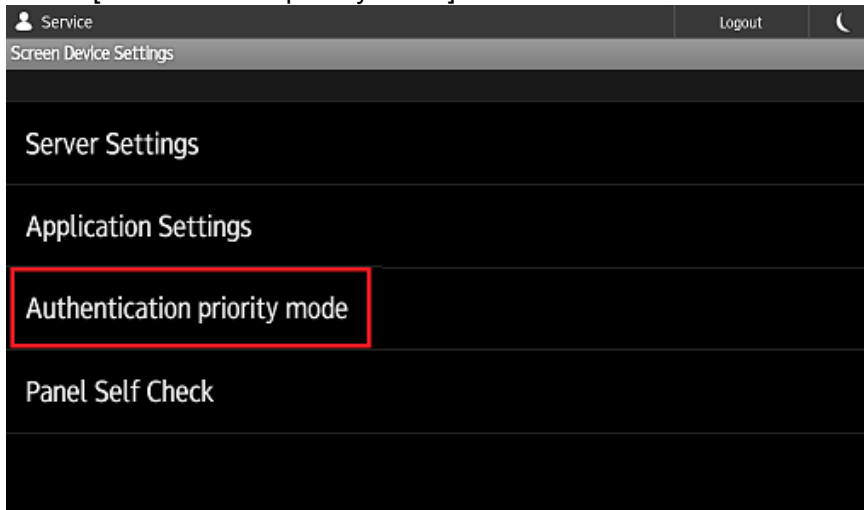


**Reissued: 21-August-15**

Model: Enhanced Locked Print NX v2 with CAP	Date: 12-Mar-12	No.: RD602009m
---	-----------------	----------------

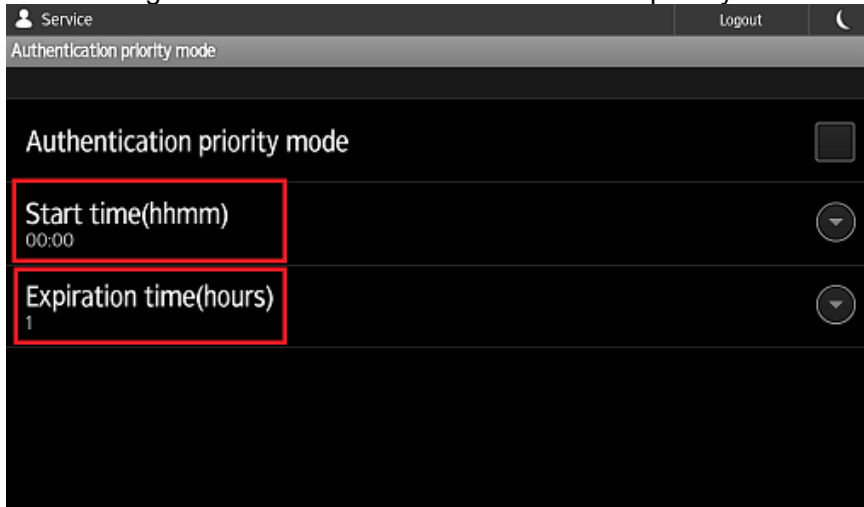


- 3. Select [Authentication priority mode].



- 4. Select [Start time(hhmm)] and enter the desired start time(hhmm). Also, select [Expiration time(hours)] and enter the desired expiration time(hours). It is possible to input the desired hour which is value of 1-10 hour(s).

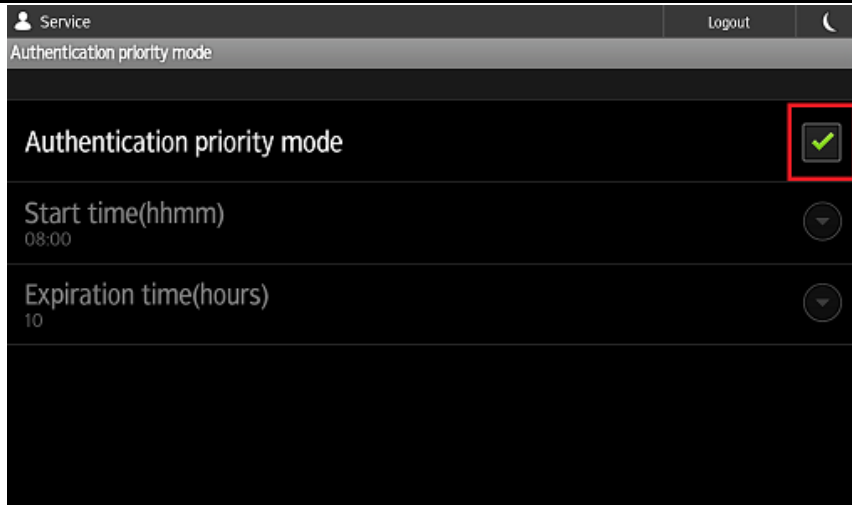
Their settings mean that it is time for Authentication priority mode to start and expire.



- 5. Check [Authentication priority mode].

**Reissued: 21-August-15**

Model: Enhanced Locked Print NX v2 with CAP	Date: 12-Mar-12	No.: RD602009m
---	-----------------	----------------



6. Logout.

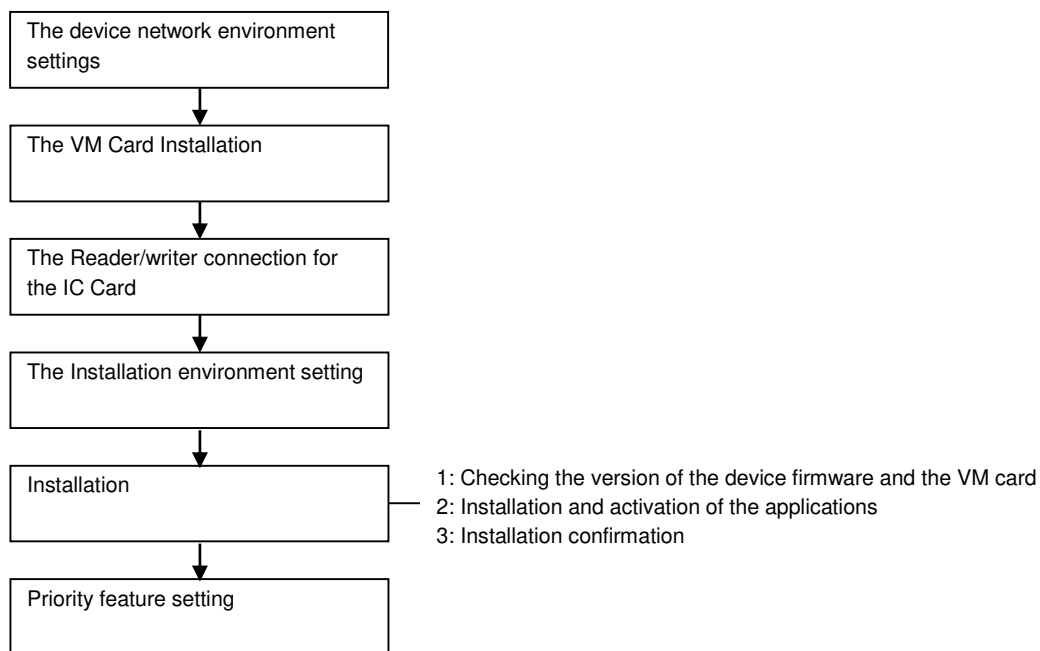
---

## Installation (4-line MFP/4-line LP/LP)

---

### Installation Flowchart

---



---

## Installation Environment Settings

---

Set the following network information from system settings in the device.

- Host Name
- IP Address
- Subnet Mask
- Default Gateway
- DNS Server 1
- DNS Server 2
- DNS Server 3

**Reissued: 21-August-15**

Model: Enhanced Locked Print NX v2 with CAP	Date: 12-Mar-12	No.: RD602009m
---	-----------------	----------------

- Domain Name

**Installation of VM Card**

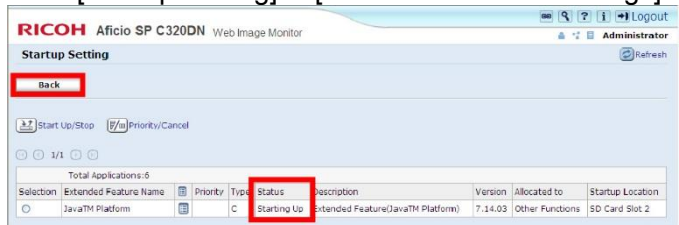
1. Set [Energy Saver Timer] to 5 minutes in [User Tools / Counter / Enquiry] screen → [System Settings] → [Timer Settings] tab.
  - ↓ Note
    - [Energy Saver Timer] at the device side should be set to 5 minutes to prevent the device from entering the Energy Saver mode while the Java™ Platform is installing or activating.
2. Turn off the main power of the device.
3. Insert the VM card into the SD card slot.
  - ↓ Note
    - For which the SD card slot should be inserted into, see the service manual of each machine.
4. Turn on the main power of the device.
  - ↓ Note
    - The Java™ Platform is installed automatically if the main power of the device is turned on after the VM card insertion.
    - It takes for approx. 3 to 4 minutes to install it automatically.
    - Never turn off the power of the device during the installation, otherwise the VM card may be damaged. Turn off the power after the confirmation in step 9 has been done.
5. Access to the device through Web Image Monitor.
6. Log in to Web Image Monitor as an administrator.
  - ↓ Note
    - The initial value of login is as follows:
      - Login user name: admin
      - Password: [blank]



7. Click [Configuration] in the left menu.



8. Click [Startup Setting] in [Extended Feature Settings] menu.



9. Confirm that the status of [Java™ Platform] is [Starting Up].
10. Click [Back].

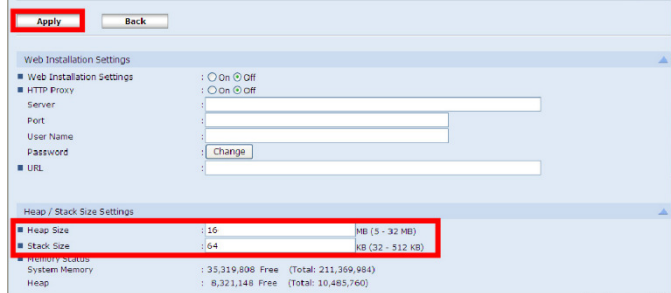
**Reissued: 21-August-15**

Model: Enhanced Locked Print NX v2 with CAP	Date: 12-Mar-12	No.: RD602009m
---	-----------------	----------------



gloria\_a064

11. Click [Administrator Tools] in [Extended Feature Settings] menu.



gloria\_a065

12. Set [Heap Size] to 16 MB, [Stack Size] to 64 KB.
13. Click [Apply].
14. Log out from Web Image Monitor.
15. Select [Shutdown] from the menu of the device.



- Never turn off the power of the device before the shutdown, otherwise the HDD may be damaged.

16. Turn off the main power.



- The VM card should be operated with setting in the SD card slot.

**IC Card Reader/Writer Connection**



- The installation should be executed after the main power is turned off. Connect the IC card Reader/Writer to the device.

**Authentication Management Settings**

1. Open Web Image Monitor.
2. Log in to Web Image Monitor as an administrator.



- The initial value of login is as follows:
- Login user name: admin
- Password: [blank]

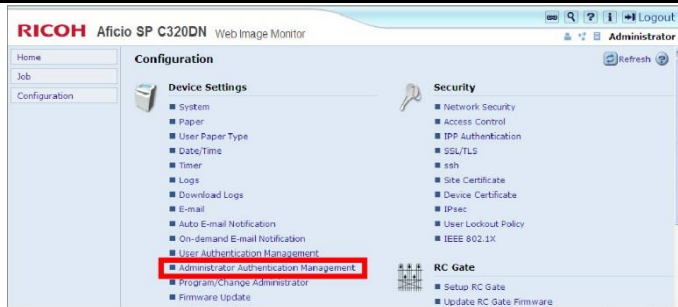


gloria\_a061

3. Click [Configuration] in the left menu.

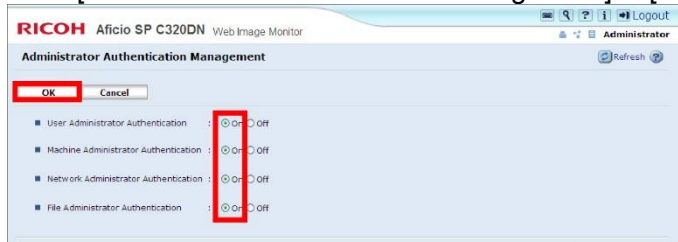
**Reissued: 21-August-15**

Model: Enhanced Locked Print NX v2 with CAP	Date: 12-Mar-12	No.: RD602009m
---	-----------------	----------------



gloria\_a072

- Click [Administrator Authentication Management] in [Device Settings] menu.



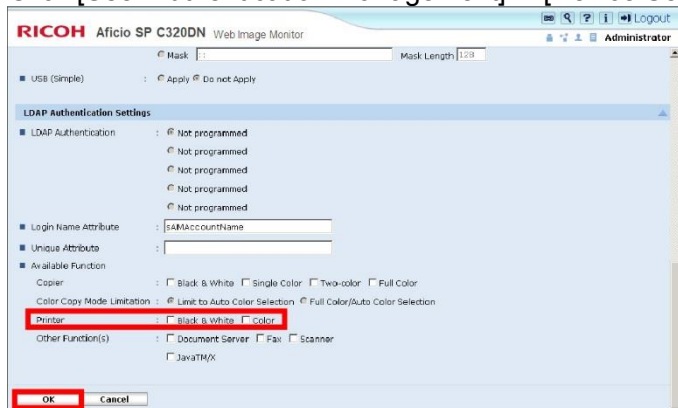
gloria\_a073

- Check [On] at the following items.
  - [User Administrator Authentication]
  - [Machine Administrator Authentication]
  - [Network Administrator Authentication]
  - [File Administrator Authentication]
- Click [OK] to enable the settings.



gloria\_a074

- Click [User Authentication management] in [Device Settings] menu.



gloria\_a060

- Remove all check marks in [Available Function: Printer] of [LDAP Authentication Settings] or [Custom Authentication Settings].
- Click [OK] to enable the settings.
- Log out from Web Image Monitor.

**Reissued: 21-August-15**

Model: Enhanced Locked Print NX v2 with CAP	Date: 12-Mar-12	No.: RD602009m
---	-----------------	----------------

11. Select [Shutdown] from the menu of the device.
12. Turn off and on the main power.

**Installation of Enhanced Locked Print NX V2 with CAP**

Install the following applications using Remote Install Manager to install Enhanced Locked Print NX V2 with CAP.

- ELP-NX V2 MP21/SP11
- ELP NX
- FR Filter (08S or older models must install the FR Filter manually.)
- CAP V2 MP21/SP11
- CAP LAUNCHER
- CAP
- CAP REG

For the installations procedures of these applications, see the service manual of Remote Install Manager. (Remote Install Manager)

**Installation of FR Filter**



- Note that using Remote Install Manager will install the FR Filter automatically for 08A or later models.

1. Open Web Image Monitor.
2. Log in to Web Image Monitor as an administrator.



- The initial value of login is as follows:
- Login user name: admin
- Password: [blank]



gloria\_a061

3. Click [Configuration] in the left menu.



gloria\_a066

4. Click [Install] in [Extended Feature Settings] menu.

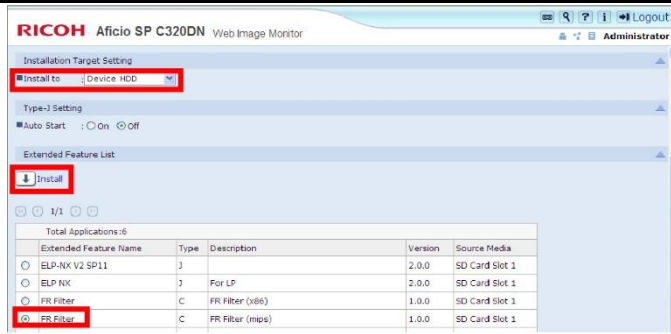


gloria\_a067

5. Check [SD Card Slot] and click [Display Extended Feature List].

**Reissued: 21-August-15**

Model: Enhanced Locked Print NX v2 with CAP	Date: 12-Mar-12	No.: RD602009m
---	-----------------	----------------



gloria\_a068

6. Select [Device HDD] for the install location and check [FR Filter] in the list, and then click [Install].



gloria\_a069

7. Click [OK] on confirmation screen.

**Installation Check**

1. After installing CAP v2 and ELP-NX v2 via Remote Install Manager, please wait 5 minutes before confirming the installation (next step) because the start process is performed internally.
2. Log in to Web Image Monitor as an administrator.



- The initial value of login is as follows:
- Login user name: admin
- Password: [blank]



gloria\_a061

3. Click [Configuration] in the left menu.



gloria\_a071

4. Click [Extended Feature Info] in [Extended Feature Settings] menu.
5. In the lists on [Extended Feature Info] screen, confirm that each status of the application is as in the following.

**Reissued: 21-August-15**

Model: Enhanced Locked Print NX v2 with CAP	Date: 12-Mar-12	No.: RD602009m
---	-----------------	----------------

Application name	Status
CAP V2 MP21/SP11	Starting Up
ELP-NX V2 MP21/SP11	Starting Up
CAP	Starting Up
ELP NX	Suspend
CAP REG *	Stop
JavaTM Platform	Starting Up
FR Filter	Waiting

\* Appears only in 4-line devices, when CAP REG has been installed.

**Priority Feature Setting**

1. Press [Maintenance] → [General Settings] → [Function Priority] from the menu of the device.
2. Select [Java TM/X].

↓ Note

- The procedure of this setting differs from devices so that see the service manual of the device.

**When Migrate to Card Authentication Package v2 from v1**

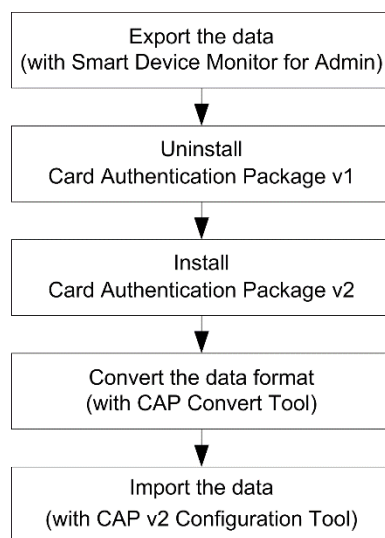
Migration from Card Authentication Package v1 to v2 requires the conversion of the user information from Card Authentication Package v1's format to v2's format.

The following explains the conversion procedure using CAP Convert Tool.

↓ Note

- For CAP Convert Tool, JRE v6.0 or later is required on the host PC.

**Conversion Flowchart**



gloria\_ap003



**Reissued: 21-August-15**

Model: Enhanced Locked Print NX v2 with CAP	Date: 12-Mar-12	No.: RD602009m
---	-----------------	----------------

**Export the Data**

The following three files are required in order to convert the Card Authentication Package v1 data into v2 data.

- Card information file: card(date).csv
- User information file: (model name)\_user.csv
- Address information file: (model name)\_addr.csv

These exports have to be done before uninstalling v1.

**1) Export the card information**

1. Click [Maintenance] to show [Card ID Mapping Maintenance] screen.



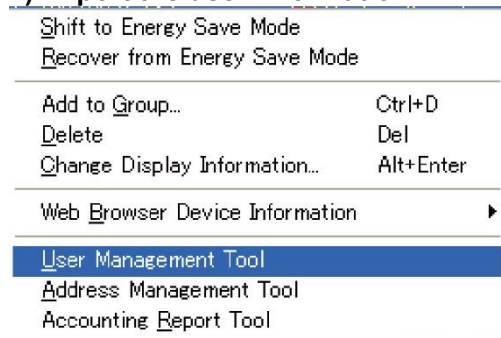
gloria\_a051

2. Click [Export].

The export operation creates a CSV file containing the card information.

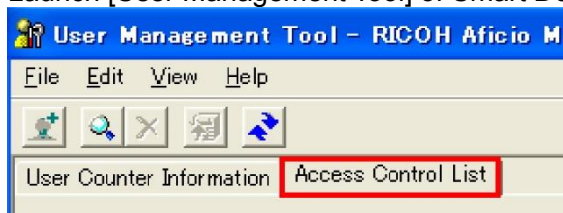
**Example:** cardmdd.csv (mdd: an exported month (mm) and day (dd))

**2) Export the user information**



gloria\_a052

1. Launch [User Management Tool] of Smart Device Monitor for Admin.

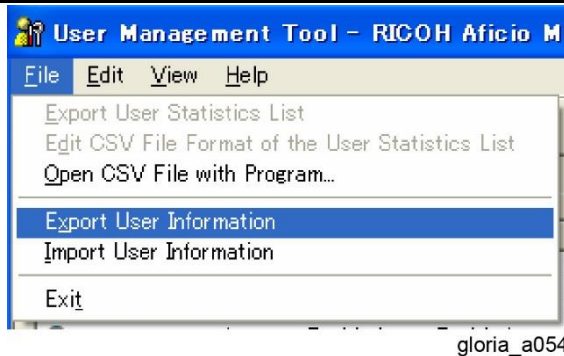


gloria\_a053

2. Select [Access Control List] tab.

**Reissued: 21-August-15**

Model: Enhanced Locked Print NX v2 with CAP	Date: 12-Mar-12	No.: RD602009m
---	-----------------	----------------

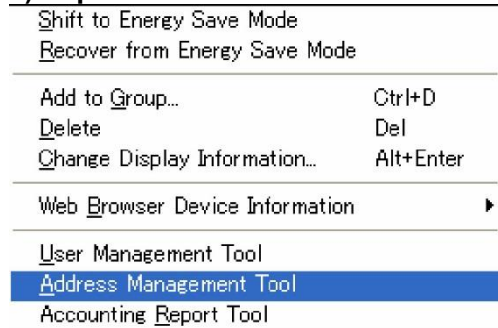


gloria\_a054

3. Select [Export User Information] from [File] menu.  
The user information is exported as a CSV file.

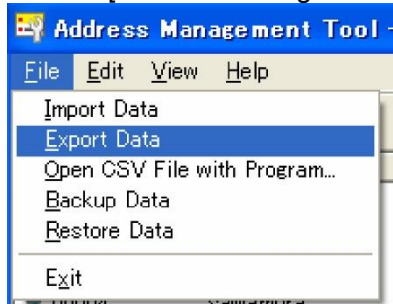
**Example (for an Aficio MP C5000):** Aficio\_MP\_C5000\_user.csv

**3) Export the address information**



gloria\_a055

1. Launch [Address Management Tool] of Smart Device Monitor for Admin.



gloria\_a056

2. Select [Export Data] from [File] menu.  
Three CSV files are created by the export process and one of them is needed for the conversion.

**Example (for an Aficio MP C5000):**

Aficio\_MP\_C5000\_faxinfo.csv

Aficio\_MP\_C5000\_taginfo.csv

Aficio\_MP\_C5000\_addr.csv (Only this file is needed for the conversion.)

**Uninstall Card Authentication Package v1**

For the Card Authentication Package v1 uninstallation, see the service manual for Card Authentication Package v1. (📄 [Card Authentication Package v1 Service Manual](#))

**Install Card Authentication Package v2**

For the Card Authentication Package v2 installation, install it with Remote Install Manager. See the service manual of Remote Install Manager. (📄 [Remote Install Manager](#))

**Reissued: 21-August-15**

Model: Enhanced Locked Print NX v2 with CAP	Date: 12-Mar-12	No.: RD602009m
---	-----------------	----------------

**Convert the Data Format**

---

3. Before running CAP Convert Tool, put the tool and the files into the same directory.
  - CAP Convert Tool: DataConvertFromCap.exe
  - Card information file: card(date).csv
  - User information file: (model name)\_user.csv
  - Address information file: (model name)\_addr.csv
4. CAP Convert Tool is a command-line tool. Open a command prompt and switch to the directory where the files are located.
5. Enter the following command.  
 DataConvertFromCap.exe (User information file name) (Address information file name) (Card information file name) [Character-code]

**Note**

- If any character code is not specified, "Cp1252" will be used as a default.
  - For a list of supported character encoding types, refer to the 2<sup>nd</sup> column of the following list:
    - <http://download.oracle.com/javase/1.5.0/docs/guide/intl/encoding.doc.html>
6. A message is displayed when the conversion is complete. The message includes the following information:
    - User information registered (total item)
    - Convert user information items (succeeded)
    - Input format error items (failed)
    - Conversion error items (failed)
 If there is no error, close the command prompt.

**Import the Data**

---

- A successful conversion creates the following two files:
- DataConvertFromCap.csv  
 This is the user information file for Card Authentication Package v2. To import the data, use CAP v2 Configuration Tool.
  - DataConvertFromCap.log  
 This log contains the conversion results and the error information.

**Reissued: 21-August-15**

Model: Enhanced Locked Print NX v2 with CAP

Date: 12-Mar-12

No.: RD602009m

# Uninstallation

---

## Uninstallation

---

---

### Uninstallation (WVGA/4.3-inch operation panel models)

---

- Depending on the device model, the actual operation panel screen may look different from the screenshots used in this document.

---

### Smart Operation Panel model specific settings (Hybrid mode)

---

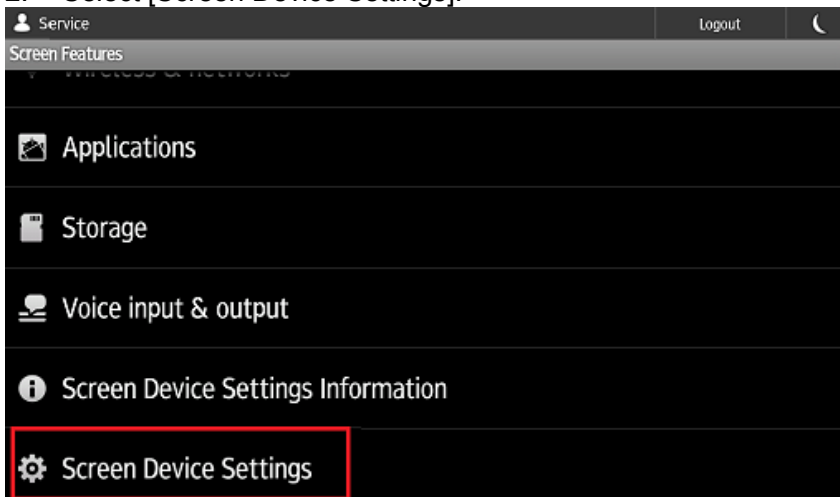
Set "Authentication Priority mode (Hybrid mode)" via the Screen service mode to off.

1. Shift to Screen service mode.



- For information on how to enter Screen service mode, contact the supervisor in your branch office.

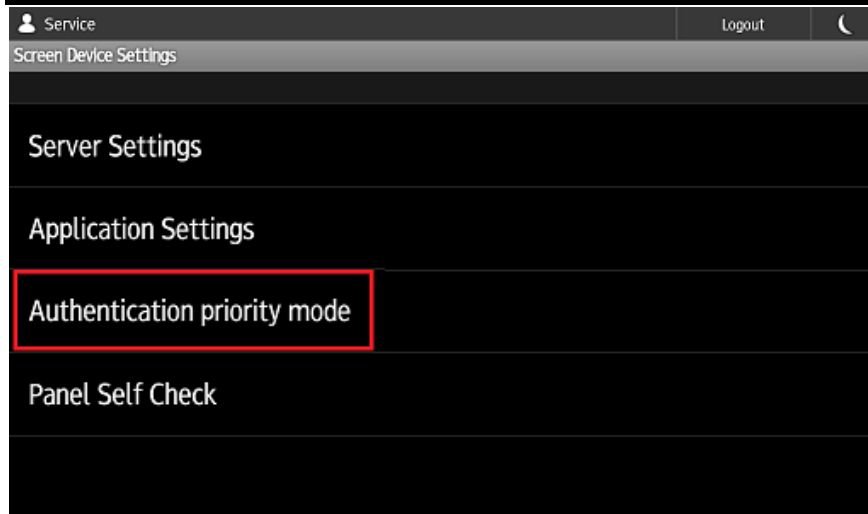
2. Select [Screen Device Settings].



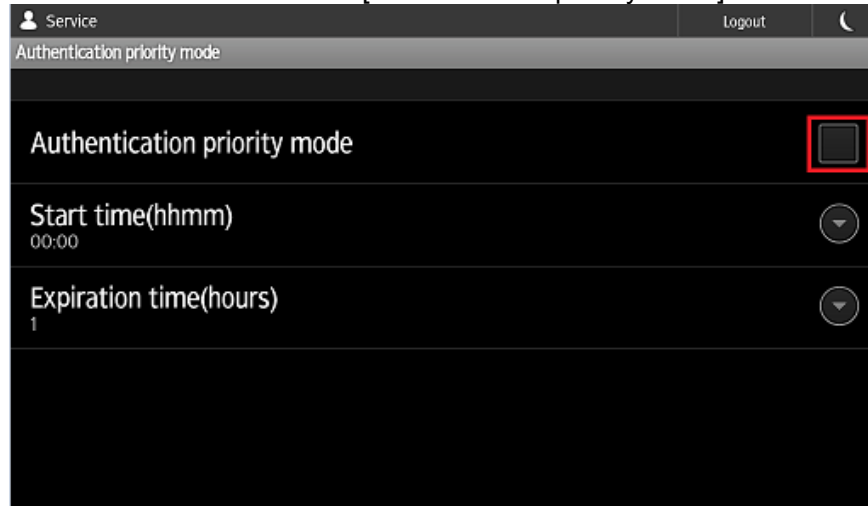
3. Select [Authentication priority mode].

**Reissued: 21-August-15**

Model: Enhanced Locked Print NX v2 with CAP	Date: 12-Mar-12	No.: RD602009m
---	-----------------	----------------



4. Clear the check box for [Authentication priority mode].



5. Logout.

**Setting in the Device**

---

Set [Enhanced Authentication Management] in [Security Management] to [Off].

↓ Note

- The SC636 error will occur when ignoring the process above.

**SP Mode Cancellation**

---

Restore the SP values described below. In the case of Smart Operation Panel models, press the [x] button on the login screen and select the [Printer] icon after logging out, and then go in to SP mode. It is not possible to log in to SP mode from User Tools or Quick application (such as Quick Copy) and when logged into the device.

- SP5-401-103: [3] → [0]
- SP5-401-162: bit0 [1] → [0], bit5 [1] → [0], bit6 [1] → [0]
- SP5-401-230: bit0 [1] → [0]

**Reissued: 21-August-15**

Model: Enhanced Locked Print NX v2 with CAP	Date: 12-Mar-12	No.: RD602009m
---	-----------------	----------------

- SP5-401-240: bit0 [1] → [0]
  - ↓ Note
    - The machine should be rebooted after the settings are changed.
    - The setting changes are not necessary if the reinstallation is executed.

**Priority Feature Cancellation**

---

In the case of Normal Operation Panel models:

1. Press the [User Tools/Counter] button. Then, press [System Settings].
2. Select the [General Features] tab. Then, press [Function Priority].
3. Select any item on the screen other than [Java TM/X] and press [OK].

In the case of Smart Operation Panel models:

1. Press the [Screen Features] button. Then, press [System Settings].
2. Press [Function Priority].
3. Select any item on the screen other than [ELP NX] and press [OK].

**Authentication Management Settings**

---

1. Log in the device as an administrator.
  - ↓ Note
    - The initial value of login data is as follows:
      - Login user name: admin
      - Password: [blank]
2. Press [User Tools/Counter] button, and then press [System Settings].
3. Press [Administrator Tools] tab, and set items below:
  - [User Authentication Management]
  - [Administrator Authentication Management]

**1) User Authentication Management**

1. Set the method of the authentication is "Off".
2. Press [OK] of the upper right.

**2) Administrator Authentication Management**

- [User management]
  1. Set [Admin. Authentication] to [Off].
- [Machine Management]
  2. Set [Admin. Authentication] to [Off].
- [Network Management]
  3. Set [Admin. Authentication] to [Off].
- [File Management]
  4. Set [Admin. Authentication] to [Off].
- 5. Press [OK] of the upper right.

Turn the power off and on after the settings of [Administrator Authentication Management] and [User Authentication Management] are finished.

**Uninstallation of Enhanced Locked Print NX V2 with CAP**

---

Uninstall the following applications using Remote Install Manager to uninstall Enhanced Locked Print NX V2 with CAP. For the uninstalls procedures of these applications, see the service manual of Remote Install Manager. (Remote Install Manager)

In the case of Normal Operation Panel models and Smart Operation Panel models (Compatibility mode):

- ELP-NX V2 MP11/MP12/MP31/SP31

**Reissued: 21-August-15**

Model: Enhanced Locked Print NX v2 with CAP	Date: 12-Mar-12	No.: RD602009m
---	-----------------	----------------

- ELP NX
- FR Filter (08S or older models must uninstall the FR Filter manually.)
- CAP V2 MP11/MP21/MP31/SP31
- CAP LAUNCHER
- CAP
- CAP REG

In the case of Smart Operation Panel models (Hybrid mode):

- ELP-NX V2 Z12
- ELP Service
- FR Filter
- ELP NX
- CAP V2 Z11
- CAP V2 Auth. UI
- CAP User Config.

**Note**

If “RTY-003 : Communication timeout has occurred between the devices. (N002)” is displayed on Remote Install Manager after uninstallation, please try to restart the device manually and perform [Re-execute Errored Operation...] from the Device Operation menu. If the error still appears even though the operation is performed, check the error for troubleshooting in Remote Install Manager Service Manual.

**Uninstallation of FR Filter**

**Note**

- Note that using Remote Install Manager will uninstall the FR Filter automatically for 08A or later models.

1. Press [User Tools/Counter] button.
2. Press [Extended Feature Settings].
3. Confirm on [Extended Feature Setting Menu] screen that [Java™ Platform] appears.

**Note**

- If [Java™ Platform] is not shown, the Java™ Platform has not activated yet. Wait for a while until [Java™ Platform] appears.

4. Press [Extended Feature Settings].
5. Press [Uninstall] tab and then select [FR Filter] in the applications list.
6. Press [Yes].
7. Press [Yes].
8. Press [Exit].
9. Push the power button at the side of the operation section. After the power indicator has finished blinking, turn off the main power.
10. Turn on the main power.
11. Press [User Tools/Counter] button.
12. Press [Extended Feature Settings] on [User Tools / Counter / Enquiry] screen.
13. Press [Extended Feature Settings] on [Extended Feature Setting Menu] screen.
14. Press [Uninstall] tab.
15. Confirm that [FR Filter] is not shown in the applications list.

**Note**

- The main power should be turned off and on after the uninstallation. Otherwise the application may be reinstalled incorrectly.

**Reissued: 21-August-15**

Model: Enhanced Locked Print NX v2 with CAP	Date: 12-Mar-12	No.: RD602009m
---	-----------------	----------------

**Uninstallation (4-line MFP/4-line LP/LP)**

**Setting in the Device**

Set [Enhanced Authentication Management] in [Security Management] to [Off].



- The SC636 error will occur when ignoring the process above.

**Setting from Web Image Monitor**

1. Open Web Image Monitor.
2. Log in to Web Image Monitor as an administrator.



- The initial value of login is as follows:
- Login user name: admin
- Password: [blank]



gloria\_a061

3. Click [Configuration] in the left menu.



gloria\_a074

4. Click [User Authentication Management] in [Device Settings] menu.



gloria\_a075

5. Select [Off] at [User Authentication Management] and click [OK].



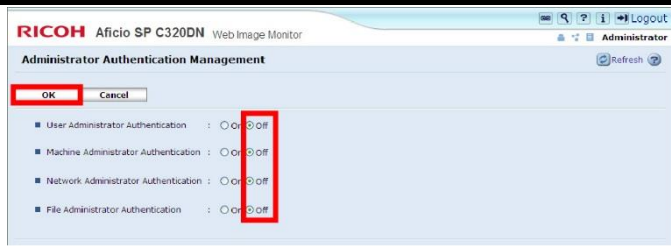
gloria\_a072

6. Click [Administrator Authentication Management] in [Device Settings] menu.



**Reissued: 21-August-15**

Model: Enhanced Locked Print NX v2 with CAP	Date: 12-Mar-12	No.: RD602009m
---	-----------------	----------------



gloria\_a076

7. Check [Off] at the following items and click [OK].  
 [User Administrator Authentication]  
 [Machine Administrator Authentication]  
 [Network Administrator Authentication]  
 [File Administrator Authentication]
8. Turn off and on the main power.
9. Uninstall the following applications using Remote Install Manager to uninstall Enhanced Locked Print NX V2 with CAP.
  - ELP-NX V2 MP21/SP11
  - ELP NX
  - FR Filter (08S or older models must uninstall the FR Filter manually.)
  - CAP V2 MP21/SP11
  - CAP LAUNCHER
  - CAP
  - CAP REG

For the uninstallation procedures of these applications, see the service manual of Remote Install Manager. (Remote Install Manager)



- The following procedures (steps 10 through 15) are needed for 08S or older models.

10. Open Web Image Monitor.
11. Log in to Web Image Monitor as an administrator.



- The initial value of login is as follows:
- Login user name: admin
- Password: [blank]



gloria\_a061

12. Click [Configuration] in the left menu.



gloria\_a077

13. Click [Uninstall] in [Extended Feature Settings] menu.
14. Select [FR Filter] in the applications list.
15. Reboot the device.

**SP Mode Cancellation**

Restore the SP values described below.

Reissued: 21-August-15

Model: Enhanced Locked Print NX v2 with CAP	Date: 12-Mar-12	No.: RD602009m
---	-----------------	----------------

- SP5-401-103: [3] → [0]
- SP5-401-162: bit0 [1] → [0], bit5 [1] → [0]
- SP5-401-230: bit0 [1] → [0]
- SP5-401-240: bit0 [1] → [0]

↓ Note

- The machine should be rebooted after the settings are changed.
- The setting changes are not necessary if the reinstallation is executed after the uninstallation.

#### Priority Feature Cancellation

---

1. Press [Maintenance] → [General Settings] → [Function Priority] from the menu of the device.
2. Select an item on the screen other than [Java TM/X].

↓ Note

- The procedure of this setting differs from devices so that see the service manual of the device.

**Reissued: 21-August-15**

Model: Enhanced Locked Print NX v2 with CAP	Date: 12-Mar-12	No.: RD602009m
---	-----------------	----------------

## Appendix

### VM Card Update

 Note

- The steps below should be followed when updating the VM card if ELP-NX v2 and CAPv2 are installed.

1. Disable Enhanced Authentication Management (SP5-401-160: [1] → [0]).

 Note

- Proceed to step 2 without rebooting the device.
2. Update the VM card using Remote Install Manager.
  3. Reboot the device two times (some settings are automatically set during the 1<sup>st</sup> reboot that require a 2<sup>nd</sup> reboot to enable).

### Procedure for changing the HDD

1. Export the user/device settings via the Configuration Tool for back up. (If possible)  
File --> Export --> Select User Information and Device Settings for export --> Click the "Export" button.
2. Uninstall all the applications (CAP and ELP-NX) using Remote Install Manager.
3. Change out the HDD.

 Note

- Please refer to the device service manual to change out the HDD.

4. Reinstall all the applications (CAP and ELP-NX) using Remote Install Manager.
5. Import the user/device setting in Configuration Tool.  
File --> Import --> Browse for the User Information and Device Settings --> Click the "Import" button.

### Procedure for changing the controller board

This procedure is available in the case that Java VM is installed to the device's flash memory (FM) on the controller board.

1. Export the user/device settings via the Configuration Tool for back up. (If possible.)  
File --> Export --> Select User Information and Device Settings for export --> Click the "Export" button.
2. Uninstall all applications (CAP and ELP-NX) via Remote Install Manager.

 Note

- In the case that the controller board needs to be replaced when using Hybrid mode:  
If it is necessary to replace the controller board, the Smart Operation Panel applications will remain. Therefore, the applications should be uninstalled using RIM.

**Reissued: 21-August-15**

Model: Enhanced Locked Print NX v2 with CAP	Date: 12-Mar-12	No.: RD602009m
---	-----------------	----------------

3. Disable the Java VM (SP5-730-001: [1] -> [0]). Then restart the device.
4. Change out the controller board.
  - ↓ Note
    - Please refer to the device service manual to change out the Controller Board.
5. Reinstall all the applications (CAP and ELP-NX) using Remote Install Manager.
6. Import the user/device setting in configuration tool.
  - File --> Import --> Browse for the User Information and Device Settings --> Click the "Import" button.

---

## Procedure for changing the Smart Operation Panel

---

This procedure is available when changing to a Smart Operation Panel from a Standard Operation Panel or if a Smart Operation Panel needs to be replaced.

1. Export the user/device settings via the Configuration Tool for back up. (If possible.)
  - File --> Export --> Select User Information and Device Settings for export --> Click the "Export" button.
2. Uninstall all applications (CAP and ELP-NX) via Remote Install Manager.
  - ↓ Note
    - In the case that the Smart Operation Panel needs to be replaced when using Hybrid mode: If it is necessary to replace the Smart Operation Panel, the DSDK applications installed in the Java VM will remain. Therefore, these applications should be uninstalled via Web image Monitor. The uninstallation method via Web Image Monitor is as follows.
      - WIM -> Configuration -> "Uninstall" in Extended Feature Settings
    - The reason for why the DSDK applications must be uninstalled via WIM is as follows: As per the specification for the eDC-i system, the DSDK applications installed in the Java VM and the Smart Operation Panel applications are regarded as 1 application. When the Smart Operation Panel is replaced (the DSDK applications are left and the Smart Operation Panel applications disappear), the eDC-i system will judge that both the DSDK applications and the Smart Operation Panel applications are deleted. This will cause an error to occur when uninstalling via RIM. Therefore, it is necessary to uninstall the remaining DSDK applications via WIM in order to clear the error in RIM.
    - In the case that the Smart Operation Panel needs to be replaced when using Hybrid mode: It is necessary to forcibly deactivate the license key in advance. Please contact the marketing section in your branch office regarding the deactivation method.
3. Reinstall all applications (CAP and ELP-NX).
4. Import the user/device settings via the Configuration Tool.
  - File --> Import --> Browse for the User Information and Device Settings --> Click the "Import" button.