

Reissued: 30-Aug-10

Model: CAP/ELP	Date: 31-May-10	No.: RD489002a
----------------	-----------------	----------------

**RTB Reissue**

The items in ***bold italics*** have been corrected.

Subject: Card Authentication Package V1.4 Installation / Activation Guide		Prepared by: T. Nihei	
From: 1st Overseas Tech Support Sec., 1st PQM Dept.			
Classification:	<input type="checkbox"/> Troubleshooting	<input type="checkbox"/> Part information	<input type="checkbox"/> Action required
	<input type="checkbox"/> Mechanical	<input type="checkbox"/> Electrical	<input type="checkbox"/> Service manual revision
	<input type="checkbox"/> Paper path	<input type="checkbox"/> Transmit/receive	<input type="checkbox"/> Retrofit information
	<input type="checkbox"/> Product Safety	<input checked="" type="checkbox"/> Other ( )	<input checked="" type="checkbox"/> Tier 2

This RTB has been issued to announce the Card Authentication Package V1.4 Installation / Activation Guide release information.

# Installation Procedure

for

"Card Authentication Package" and  
"Enhanced Locked Print NX"  
(Activation Version)

Date:  
Re-issued: 2010/8  
Issued: 2009/08/21

## Models and Supported VM Versions

For each model listed, please use the VM version shown (or newer).

Model Name	VM Ver.
D017/ D018/D019/D020	V4.16.07 or later
D009/ D011/D012/D013	V4.16.07 or later
D014/D015	V4.16.07 or later
G179	V4.16.07 or later
D023/D025	V4.16.07 or later
D027/D029	V4.16.07 or later
D037/D038/C040/D041	V4.16.07 or later
G190	V4.16.07 or later
D091/D092	V4.18 or later
D084/D085	V4.18 or later
D062/D063/D065/D066	V5.05.01 or later
G188/G189	V5.05.01 or later
M047	V5.07 or later
D067/D068/D069/D072	V6.02.04 or later
D081/D082	V7.01 or later
<b>M065/M066</b>	<b>V7.02</b>

# Installation

---

## Overview

---

There are several combinations for using "Card Authentication Package" and "Enhanced Locked Print NX".

- **Embedded Type A:** This is for a customer who wants to use "Card Authentication Package" and "Enhance Locked Print NX".
- **Embedded Type B:** This is for a customer who wants to use only "Card Authentication Package".
- **Server Type A:** This is for a customer who wants to use "Card Authentication Package Enterprise Server" and "Enhance Locked Print NX".
- **Server Type B:** This is for a customer who wants to use only "Card Authentication Package Enterprise Server".

Here is the matrix of possible combinations.

	<b>Embedded Type A</b>	<b>Embedded Type B</b>	<b>Server Type A</b>	<b>Server Type B</b>
CAP	Yes	Yes	Yes	Yes
CAP-ES	No	No	Yes	Yes
CRT	Yes	Yes	Yes	Yes
ELP-NX	Yes	No	Yes	No

- CAP: Card Authentication Package
- CAP-ES: Card Authentication Package Enterprise Server
- ELP-NX: Enhanced Locked Print NX (Application and Filter)
- CRT: Card Registration Tool for CAP

---

## Confirmation Points before Installation

---

- Make sure that the firmware of the **target machine** is the latest version.
- Make sure that the firmware of the **VM card** is the latest version.
- Check the following SP settings;
  - Bit 0 of SP5401-160 (SSP: Super Service Program) must be set to "0".
  - All bits of SP5401-162 (Extend Certification Detail) must be set to "0".
  - Bit 0 of SP5401-230 (Customized Authentication) must be set to "0".
- ***CAP and ELP require that the device's Auto Off Timer be set to 5 minutes or longer. This is because the device might not work correctly if it enters Sleep Mode before the VM, CAP, and ELP applications finish booting up.***

## Installation of Card Authentication Package for MFP models

There were two installation methods for the "Card Authentication Package" for V1.1 and V1.2. However, There is only one installation method for V1.3 or later.

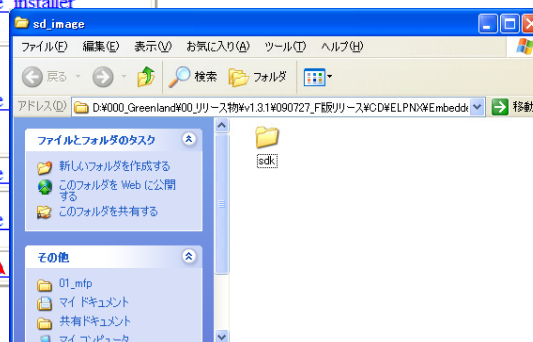
### "Working with the PC"

1. Make sure the applications necessary to use the "Card Authentication Package" and "Enhanced Locked Print NX Package" are running on the PC.
2. Unzip the zip file for the "Card Authentication Package" and "Enhanced Locked Print NX Package".
3. Open the "readme.html" from each unzipped file.
4. Click the "sd image" of the target machine
5. Copy the sdk folder onto the root directory of the VM card.

<CAP>

#### RICOH:

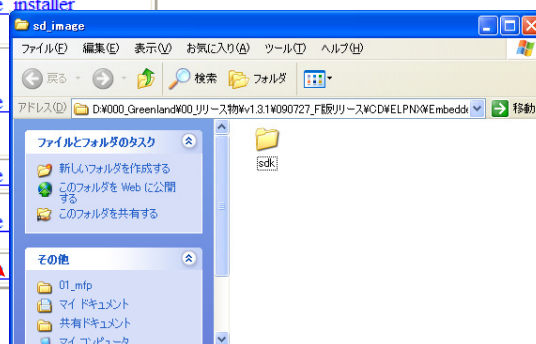
Device Name	SD Image	Remote Install Image
Aficio MP 2550 / 2550B / 3350 / 3350B		
Aficio MP 4000 / 4000B / 5000 / 5000B	<a href="#">sd image</a>	<a href="#">remote installer</a>
Aficio MP C2050 / C2550		
Aficio MP C6000 / C7500	<a href="#">sd image</a>	
Aficio MP C2800 / C3300	<a href="#">sd image</a>	<a href="#">remote</a>
Aficio MP C4000 / C5000	<a href="#">sd image</a>	<a href="#">remote</a>
Aficio MP 6001 / 7001 / 8001 / 9001	<a href="#">sd image</a>	<a href="#">remote</a>
Aficio MP 171	<a href="#">sd image</a>	<a href="#">remote</a>
Aficio SP 8200DN	<a href="#">sd image</a>	<a href="#">remote</a>
Aficio SP C420DN	<a href="#">sd image</a>	<a href="#">remote</a>
Aficio SP C820DN / C821DN	<a href="#">sd image</a>	<a href="#">remote</a>



<ELP NX>

#### RICOH:

Device Name	SD Image	Remote Install Image
Aficio MP 2550 / 2550B / 3350 / 3350B		
Aficio MP 4000 / 4000B / 5000 / 5000B	<a href="#">sd image</a>	<a href="#">remote installer</a>
Aficio MP C2050 / C2550		
Aficio MP C6000 / C7500	<a href="#">sd image</a>	
Aficio MP C2800 / C3300	<a href="#">sd image</a>	<a href="#">remote</a>
Aficio MP C4000 / C5000	<a href="#">sd image</a>	<a href="#">remote</a>
Aficio MP 6001 / 7001 / 8001 / 9001	<a href="#">sd image</a>	<a href="#">remote</a>
Aficio MP 171	<a href="#">sd image</a>	<a href="#">remote</a>
Aficio SP 8200DN	<a href="#">sd image</a>	<a href="#">remote</a>
Aficio SP C420DN	<a href="#">sd image</a>	<a href="#">remote</a>
Aficio SP C820DN / C821DN	<a href="#">sd image</a>	<a href="#">remote</a>



## "Working with the Machine"

### ↓ Note

- Make sure to turn off the Auto Off Timer. If the timer is left on, the machine will enter Auto Off Mode while the installation is in progress, causing the installation to fail.

6. Install a card reader device in a suitable location.
7. Connect the USB cable from the card reader device to the USB slot of the target machine.

### ↓ Note

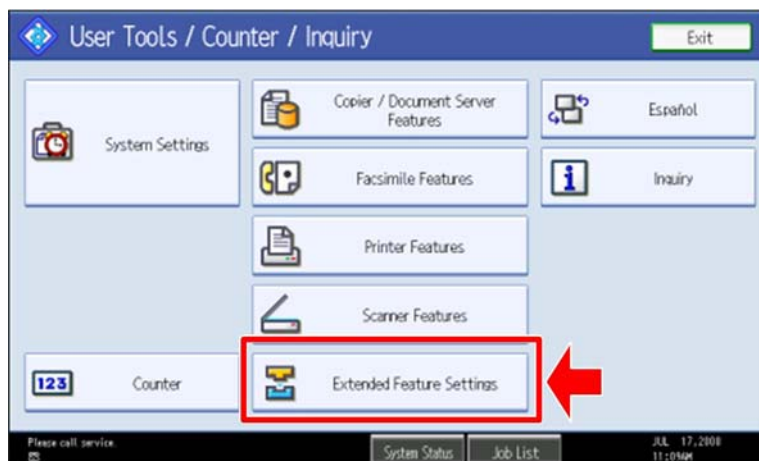
- The position of the USB slot may vary depending on the machine.

8. Secure the cable clamp to the USB slot.

### ↓ Note

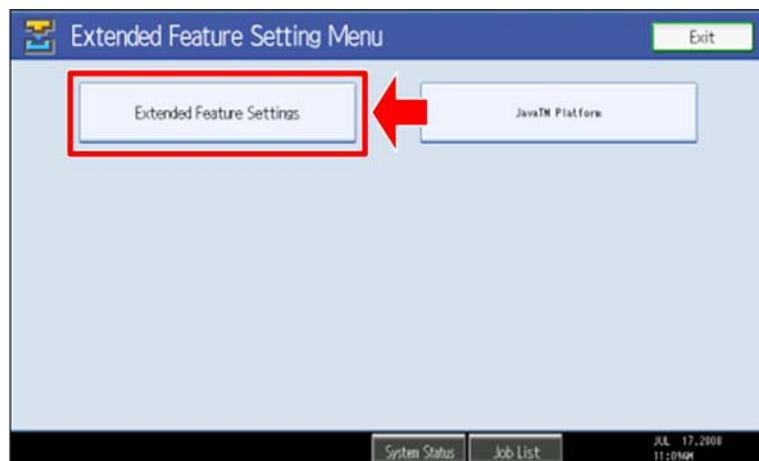
The procedure for the card reader installation depends on the machine. For details, see "USB Connection of the Card Reader" in the "Appendix" section.

9. Install the VM card in the service slot of the target machine.
10. Turn on the target machine.
11. Turn off the Auto Off Timer.
12. Ask a machine administrator to login to the target machine with the login name and password of the machine's administrator.



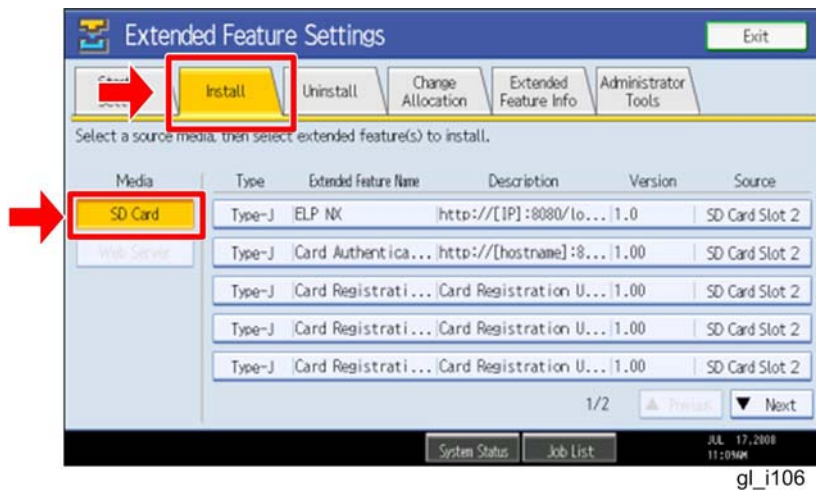
gl\_i104

13. Enter the "User Tools", and then press "Extended Feature Settings" on the LCD.



gl\_i105

14. Press "Extended Feature Settings" on the LCD.



15. Press the "Install" tab, and then press "SD Card".

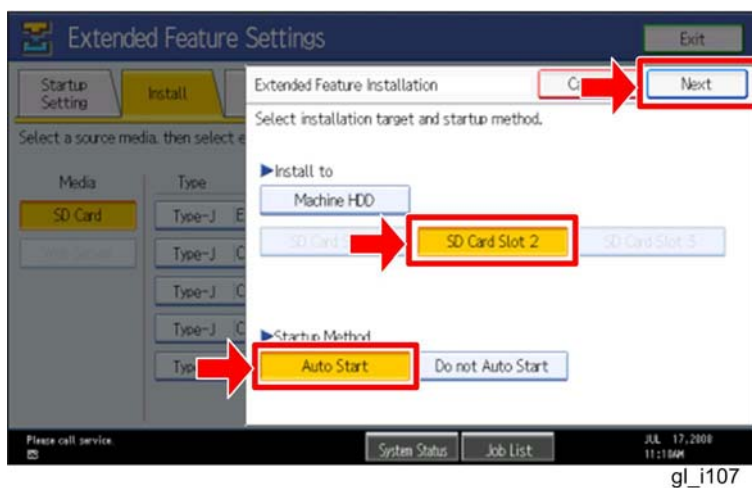
The following table shows the destination of the installed SDK application.

Application	Destination
Card Authentication Package	SD Card
Card Registration Tool for CAP	SD Card
Enhanced Locked Print NX Application	SD Card
Enhanced Locked Print NX Filter	HDD

16. Press the SDK application bar (except ELP NX-Filter) that you want to install.

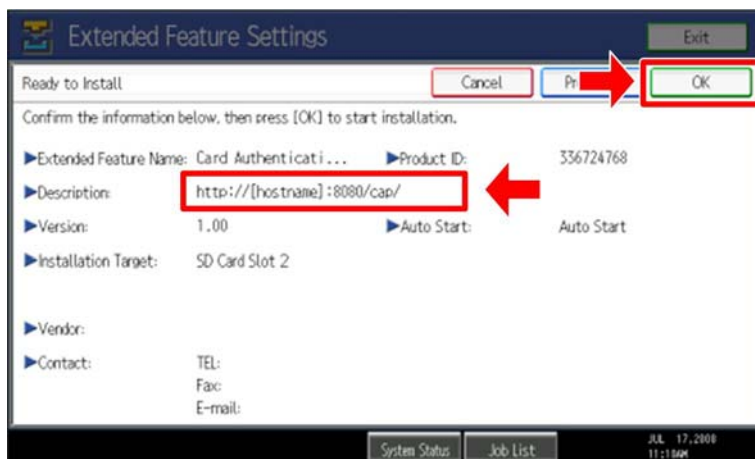
**Note**

Do not install the "Enhanced Locked Print NX-Filter" in the SD card. The ELP NX Filter must be installed in the HDD of the target machine. See step 21 for how to install it.



17. Press "SD Card Slot 2" and "Auto Select"

18. Press "Next" to continue this installation procedure.



gl\_i108

19. Check if the displayed SDK application name is correct.

**Note**

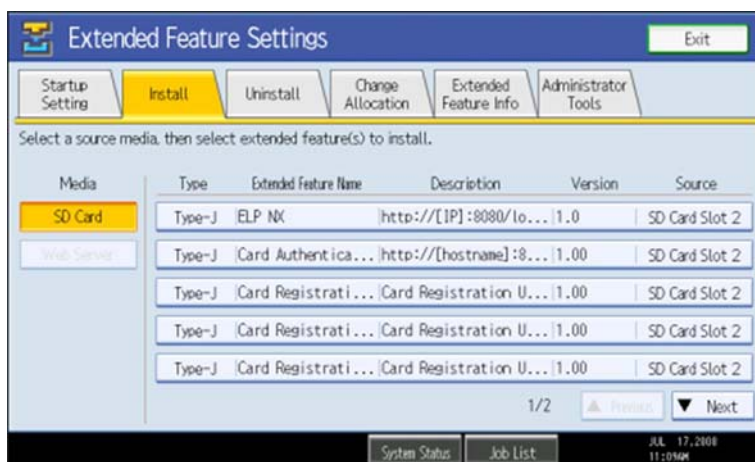
If the displayed SDK application is not what you want to install, check the contents of the VM card and retry this installation.

20. Press "OK" to complete this installation.

**Note**

Install the following applications from the SD card in the service slot with the operation panel; exactly which applications to install will depend on the customer's circumstances.

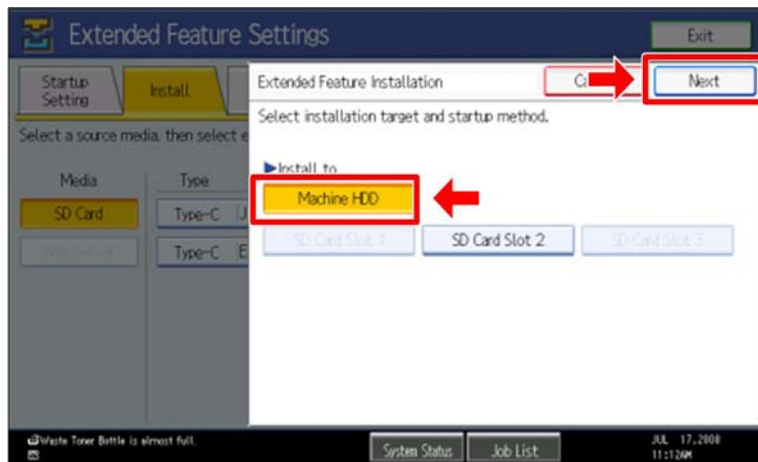
- Card Authentication Package
- Enhanced Locked Print NX Application
- Card Registration Tool for CAP



gl\_i109

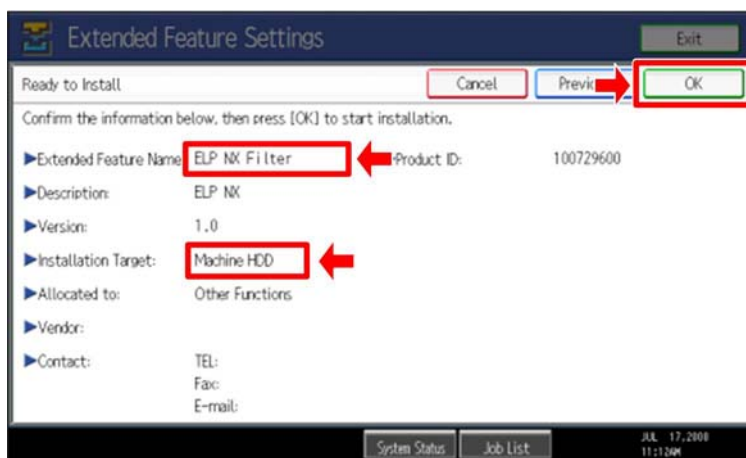
21. Press the "Enhanced Locked Print NX Filter" bar in the display shown above.





gl\_i113

22. Press "Machine HDD", and then press "Next".



gl\_i111

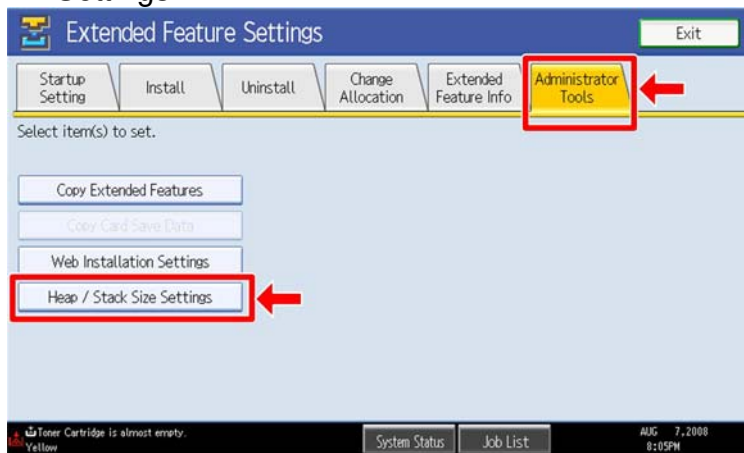
23. Check if the displayed SDK application name is correct and "Machine HDD" is selected as the installation target.

**Note**

If the displayed SDK application is not what you want to install, check the contents of the VM card and retry this installation.

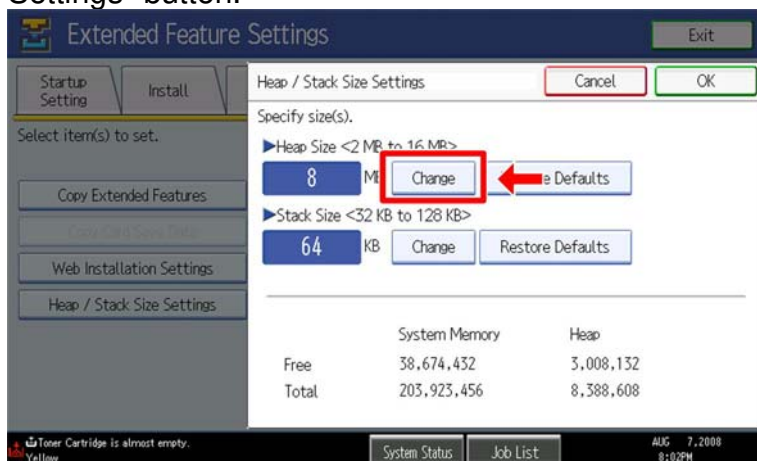
24. Press "OK" to complete this installation.

25. Allocate the Function key (on the operation panel) for the Java VM applications if the customer wants to use a key other than "Other Functions" (default).
26. Enter the "Extended Features Settings".
  - "User Tools/Counter" > "Extended Features Settings" > "Extended Features Settings"



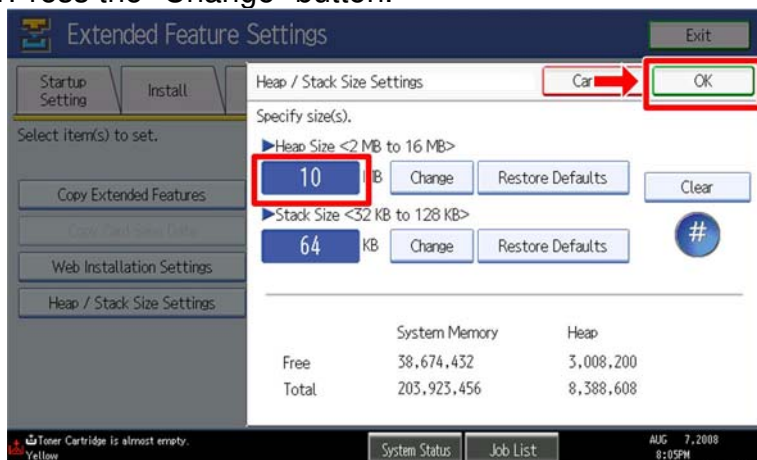
gl\_i116

27. Press the "Administrator Tools" tab, and then press the "Heap/ Stack Size Settings" button.



gl\_i117

28. Press the "Change" button.



gl\_i118

29. Input an appropriate value (see the table below) with the numeric keys on the operation panel, and then press the "# (Enter)" key.  
Required heap size for the "Copy Extended Feature" depends on a combination of installed applications. For details, refer to the table below.

CAP	ELP-NX	GlobalScan NX	Required Heap Size
Yes	-	-	8 MB
Yes	Yes	-	16 MB
Yes	Yes	Yes	16 MB
Yes	-	Yes	16 MB

30. Press the "OK" button to return to the previous screen.  
31. Press the "User Tools/Counter" key to exit the UP mode.  
32. Turn the target machine off and on.

### ***"Working with the PC"***

33. Activate the "Card Authentication Package" and "Enhanced Locked Print" (if it is installed) with the Remote Manager.

#### **Note**

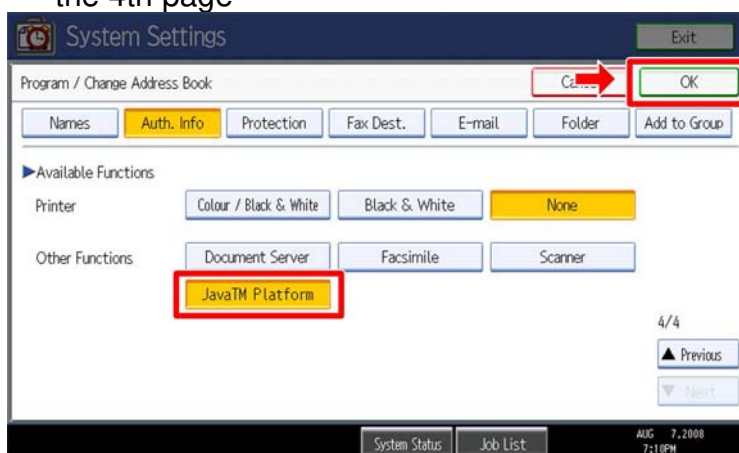
- For details, see "DSDK Application Installation" in the "Embedded Software Remote Manager Installation/Activation Guide".

**The following steps from 34 to 38 should be done by a machine administrator.**

34. Configure the card reader settings with the Card Authentication Package Web UI.  
35. Turn the target machine off and on.


### ***"Working with the Machine"***

36. Enable "Java™ Platform" for each user with the Address Book Manager.
- "User Tools/Setting" > "System Settings" > Administrator Tools" > Address Book Management" > select a user icon > "Auth. Info" > "Other Functions" on the 4th page



gl\_i115

37. Set the Auto Off Timer to "5 minutes".
38. Check if the card reader works normally.
  - Press the "Other Function" key for "SDK application" on the operation panel.
  - Select "Card Registration Tool for CAP"
  - Press "Obtain Card ID" on the LCD. After the "Set the card to register" message appears, hold the card over the card reader.
  - Check to see that the card ID is displayed on the LCD of the target machine. (If the card ID is not displayed, the card may not be available. In that case, register the card ID.)

 **Note**

For details about steps from 34 to 38, see the operation instructions for "Setting Up the Card Reader".

**The following step 39 should be done by a field service representative.**

39. Uninstall the "Card Registration Tool" with the operation panel if the customer wants to delete it.

## Installation of Card Authentication Package for LP and 4-line LCD Models

### "Working with the Machine"

**Note**

- Make sure to turn off the Auto Off Timer. If the timer is left on, the machine will enter Auto Off Mode while the installation is in progress, causing the installation to fail.

1. Install a card reader device in a suitable location.
2. Connect the USB cable from the card reader device to the USB slot of the target machine.

**Note**

- The position of the USB slot may vary depending on the machine.

3. Secure the cable clamp to the USB slot.

**Note**

The procedure for the card reader installation depends on the machine. For details, see "USB Connection of the Card Reader" in the "Appendix" section.

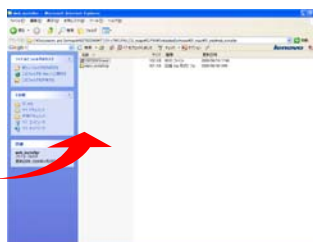
4. Install the VM card in the service slot of the target machine.
5. Turn on the target machine.
6. Turn off the Auto Off Timer.

### "Working with the PC"

7. Prepare the applications related to the "Card Authentication Package" and "Enhanced Locked Print NX Package" on your PC.
8. Unzip the zip file for the "Card Authentication Package" and "Enhanced Locked Print NX Package".
9. Open the "readme.html" from each unzipped file.

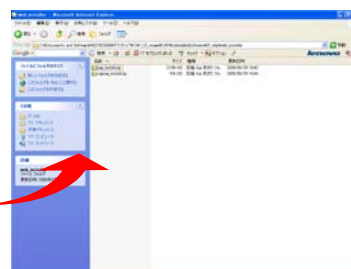
RICOH: <CAP>

Device Name	SD Image	Remote Install Image
Aficio MP 2550 / 2550B / 3350 / 3350B		
Aficio MP 4000 / 4000B / 5000 / 5000B	<a href="#">sd_image</a>	<a href="#">remote_installer</a>
Aficio MP C2050 / C2550		
Aficio MP C6000 / C7500		
Aficio MP C2800 / C3300	<a href="#">sd_image</a>	<a href="#">remote_installer</a>
Aficio MP C4000 / C5000		
Aficio MP 6001 / 7001 / 8001 / 9001		
Aficio MP 171	<a href="#">sd_image</a>	<a href="#">remote_installer</a>
Aficio SP 8200DN	<a href="#">sd_image</a>	<a href="#">remote_installer</a>
Aficio SP C420DN	<a href="#">sd_image</a>	<a href="#">remote_installer</a>
Aficio SP C820DN / C821DN	<a href="#">sd_image</a>	<a href="#">remote_installer</a>

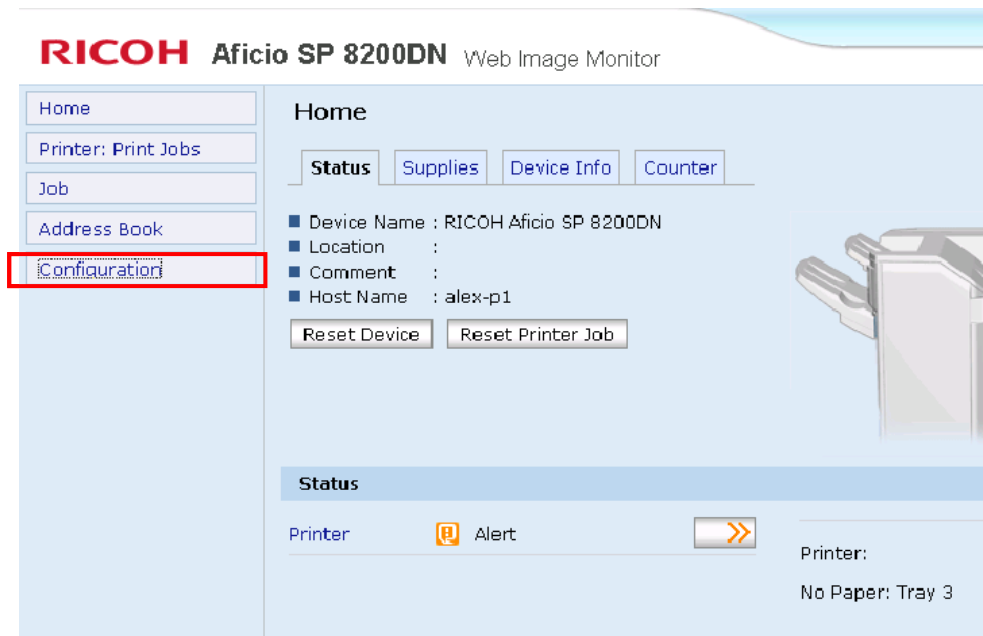


RICOH: <ELPNX>

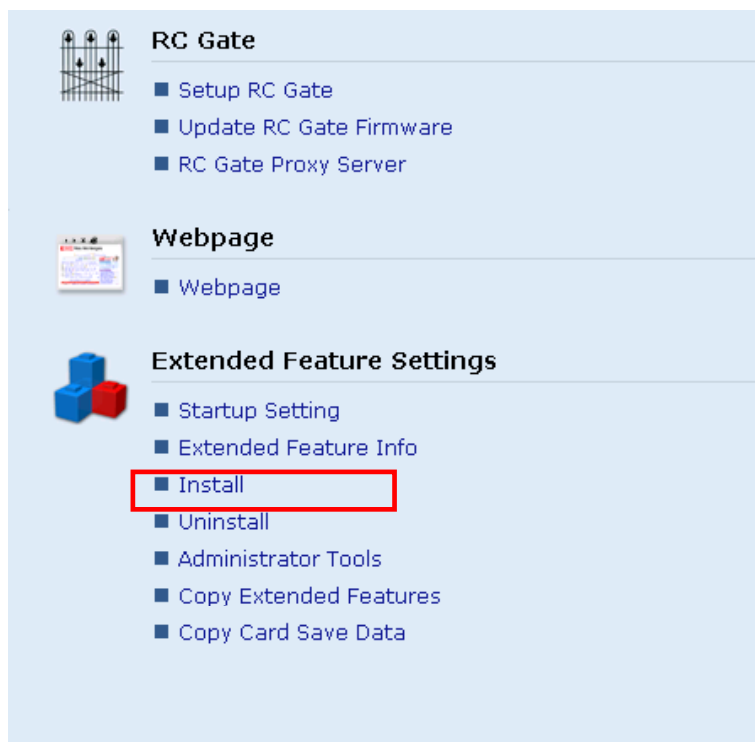
Device Name	SD Image	Remote Install Image
Aficio MP 2550 / 2550B / 3350 / 3350B		
Aficio MP 4000 / 4000B / 5000 / 5000B	<a href="#">sd_image</a>	<a href="#">remote_installer</a>
Aficio MP C2050 / C2550		
Aficio MP C6000 / C7500		
Aficio MP C2800 / C3300	<a href="#">sd_image</a>	<a href="#">remote_installer</a>
Aficio MP C4000 / C5000		
Aficio MP 6001 / 7001 / 8001 / 9001		
Aficio MP 171	<a href="#">sd_image</a>	<a href="#">remote_installer</a>
Aficio SP 8200DN	<a href="#">sd_image</a>	<a href="#">remote_installer</a>
Aficio SP C420DN	<a href="#">sd_image</a>	<a href="#">remote_installer</a>
Aficio SP C820DN / C821DN	<a href="#">sd_image</a>	<a href="#">remote_installer</a>



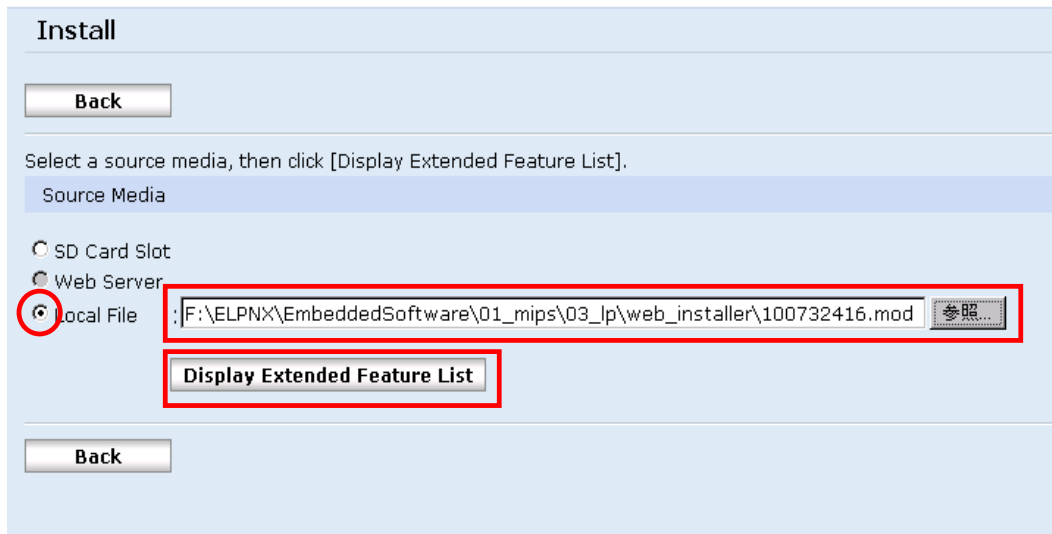
10. Click the “remote installer” of the target machine
11. Copy the zip file of each application on your PC
12. Run the Web Image Monitor for the target machine.
13. Ask a machine administrator to login to the target machine with the login name and password of the machine’s administrator.



14. Press “Configuration” in the main display.



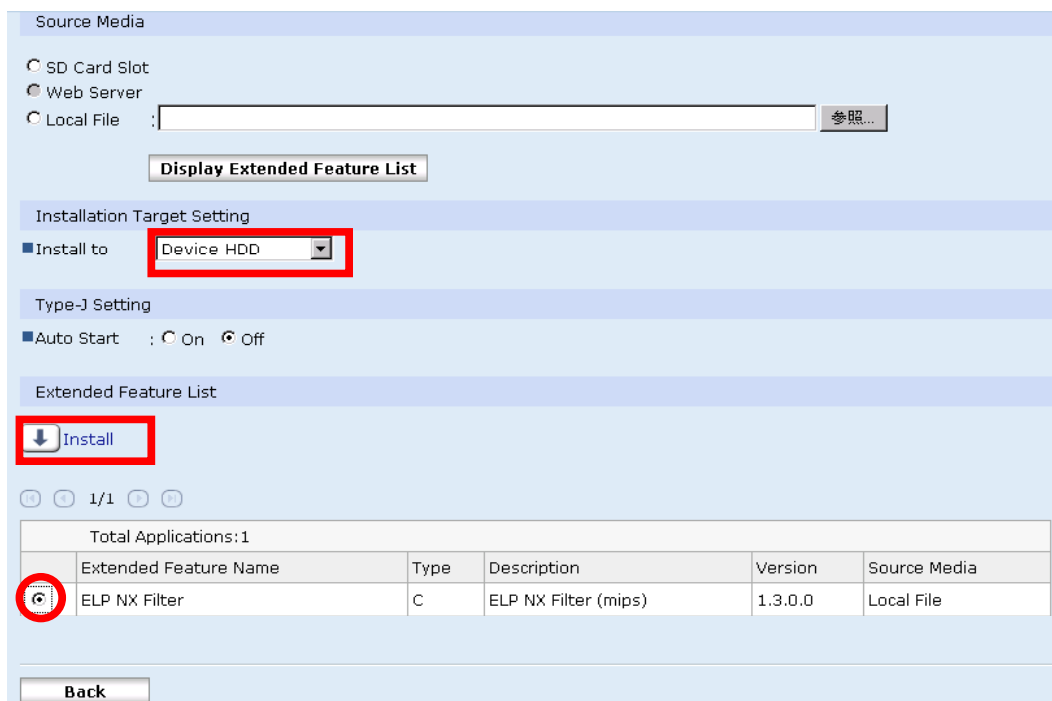
15. Press "Install".



16. Select “Local File” button and select a SDK application file that you want to install then press “Display Extended Feature List”

**Note**

Make sure that the correct application file name and folder.

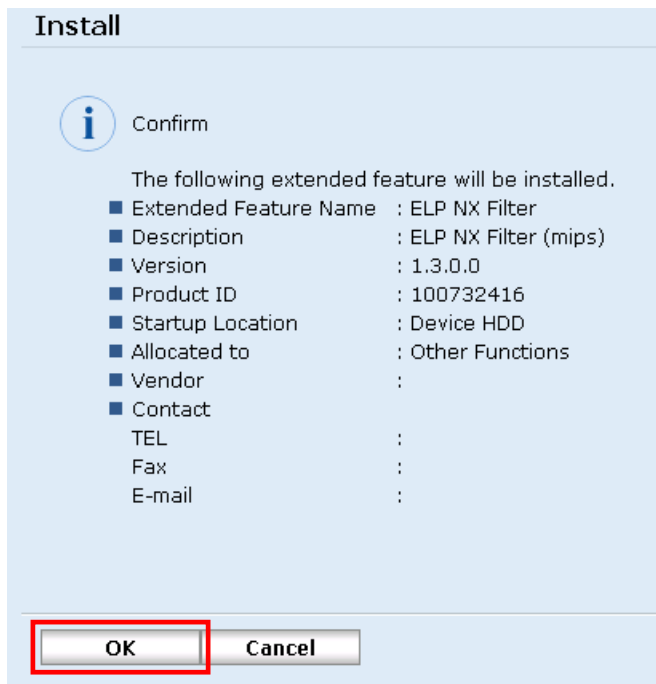


17. Select the destination of the installed SDK application.

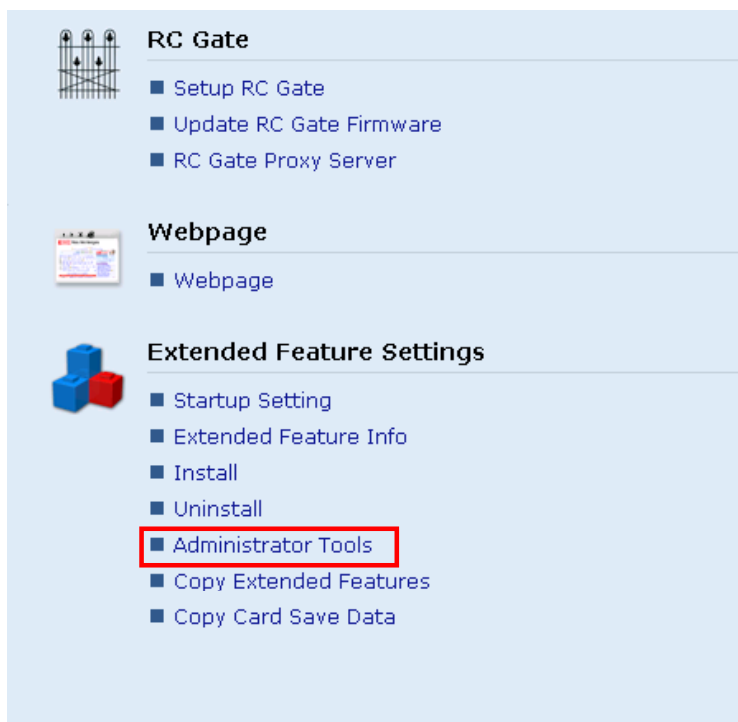
The following table shows the destination of the installed SDK application.

Application	Destination
Card Authentication Package	SD Card
Card Registration Tool for CAP (4-line LCD model only)	SD Card
Enhanced Locked Print NX Application	SD Card
Enhanced Locked Print NX Filter	HDD

18. Press the radio button of the SDK application that you want to install.
19. Press "Install".



20. Check the information for the installed SDK application.
21. Press "OK" to complete this installation.
22. If you want to install other SDK application, perform from step 16.





23. Press "Administrator Tools" in the mail view.

Heap / Stack Size Settings

■ Heap Size :  MB (2 - 16 MB)

■ Stack Size :  KB (32 - 64 KB)

■ Memory Status

System Memory : Free (Total: )

Heap : Free (Total: )

**Apply** **Back**

24. Input an appropriate value of the Heap size (see the table below) then press "Apply".

Required heap size for the "Copy Extended Feature" depends on a combination of installed applications. For details, refer to the table below.

CAP	ELP-NX	GlobalScan NX	Required Heap Size
Yes	-	-	8 MB
Yes	Yes	-	16 MB
Yes	Yes	Yes	16 MB
Yes	-	Yes	16 MB

25. Turn the target machine off and on.

***"Working with the PC"***

26. Activate the "Card Authentication Package" and "Enhanced Locked Print" (if it is installed) with the Remote Manager.

**Note**

- For details, see "DSDK Application Installation" in the "Embedded Software Remote Manager Installation/Activation Guide".

**The following steps from 27 to 35 should be done by a machine administrator.**

27. Configure the card reader settings with the Card Authentication Package Web UI.  
 28. Run the Web Image monitor for the target machine.  
 29. Login to the target machine with the login name and password of the machine's administrator.

## 30. Select "Address Book"

Address List

View:  Search for:

1/2 Page :   Display Items :  Number of Regi

	Registration No.	Name	Freq.	Title 1	Title 2	Title 3	User Code	Fax Destination
<input type="radio"/>	00001	asomura	On	---	---	---	asomura	---
<input type="radio"/>	00002	masa	On	OPQ	---	---	masa	---

## 31. Select Registration No. and press "Change".

Authentication Information

User Code :

SMTP Authentication :  Specify Other Auth. Info below:  Do not Specify  
 Login User Name :   
 Login Password :

Folder Authentication :  Specify Other Auth. Info below:  Do not Specify  
 Login User Name :   
 Login Password :

LDAP Authentication :  Specify Other Auth. Info below:  Do not Specify  
 Login User Name :   
 Login Password :

Available Functions  
 Copier:  Full Color  Two-color  Single Color  Black & White  
 Color Copy Mode Limitation:  Limit to Auto Color Selection  Full Color / Auto Color Selection  
 Printer:  Color  Black & White  
 Other functions:  Document Server  Facsimile  Scanner  JavaTM/X

## 32. Select "JavaTM/X" and press "OK".

## 33. Turn the target machine off and on.

## 34. Set the Auto Off Timer to "5 minutes".

***"Working with the Machine"*****The following steps 35 and 36 are only for 4-line LCD models.**

35. Check if the card reader works normally.
- Press the "Other Function" key for "SDK application" on the operation panel.
  - Select "Card Registration Tool for CAP".
  - Press "Obtain Card ID" on the LCD. After the "Set the card to register" message appears, hold the card over the card reader.
  - Check to see that the card ID is displayed on the LCD of the target machine. (If the card ID is not displayed, the card may not be available. In that case, register the card ID.)

**Note**

For details about step 27 to 36 see the operation instructions for "Setting Up the Card Reader".

**The following step 36 should be done by a field service representative.**

36. Uninstall the "Card Registration Tool" with the operation panel if the customer wants to delete it.

# Uninstallation

---

## Uninstalling Card Authentication Package

---

1. Turn on the target machine.
2. Deactivate "Card Authentication Package" and "Enhanced Locked Print-NX Application" with the Remote Manager. For details, see "Deactivation" in the "Embedded Software Remote Manager Installation/Activation Guide".

**★ Important**

Before uninstalling activated SDK applications, deactivation must be done. Otherwise, the product key will be wasted.

**Step 3 is required only for MFP models**

3. Enter the User Tools, and then select "Off" in the "Enhanced Authentication Management" (Administrator Tools > Enhanced Authentication).

**↓ Note**

If the SDK applications are uninstalled from the target machine with "Enhanced Authentication" turned on, SC636 is issued. In that case, enter the SP mode and change the bit 0 setting of SP5401-160 (**SSP**: Super Service Program) to "0".

4. Uninstall the SDK applications which you want to remove, except for the Java VM application, with the operation panel or Web Image Monitor.
5. Turn the target machine off and on.
6. Uninstall the Java VM application with the operation panel or Web Image Monitor.
7. Change the following SP settings.
  - Bit 0 of SP5401-160 (SSP: Super Service Program) must be set to "0".
  - All bits of SP5401-162 (Extend Certification Detail) must be set to "0".
  - Bit 0 of SP5401-230 (Customized Authentication) must be set to "0".
8. Turn off the target machine, and then remove the VM card from the target machine.

# Remote Updating Procedure

---

## Updating Card Authentication Package

---

### ★ Important

- First update the Java VM Platform if the Java VM Platform and Card Authentication Package are supposed to be updated at the same time.
- Make sure that the IC Card Reader setting is not set to “KeyStore” and the IC card reader is not connected. This is because under these conditions, CAP deactivation/un-install may not work properly on some models.

### Updating from Ver.1.2.x to Ver.1.3.x or from Ver.1.3.x (without the VM update) to Ver.1.4.x

1. Ask a machine administrator to disable the Card Authentication Package with the operation panel or Web Image Monitor.
2. Launch the Remote Manager.
3. Add a Card Authentication Package for updating in the Remote Manager

#### ↓ Note

See the "Adding a Card Authentication Package in the "Remote Manager" sub section of the "Card Authentication Package Installation" section of the Remote Manager Operation Guide.

4. Install the Card Authentication Package for updating in the target machine

#### ↓ Note

See the "Installing the Card Authentication Package in the Target Machine" sub section of the "Card Authentication Package Installation" section of the Remote Manager Operation Guide.

5. Turn off and on the target machine.
6. Ask a machine administrator to check if the version of the Card Authentication Package is updated and if the installed Card Authentication Package is "Starting Up"

## Updating from Ver.1.3.x (with the VM update) to Ver.1.4.x

1. Remove the IC card reader from the target machine.
2. Export the system configuration file.
3. Select Enhanced Authentication Management to "NO".
4. Deactivate the Card Authentication Package using the Remote Manager.
5. Uninstall Card Authentication Package v1.3.x.x using the Remote Manager.
6. Turn off the target machine.
7. Update the VM card.
8. Turn on the target machine.
9. Install Card Authentication Package v1.4.x.x using the Remote Manager.

**★ Important**

Make sure that the heap size is set to the appropriate value. To set the heap size, see Step 29 of the GAP installation procedure on pg. 11 above.

10. Activate "Card Authentication Package" using the Remote Manager.
11. Turn off and on the target machine.
12. Import the system configuration file.
13. Turn off and connect the IC card reader to the target machine,.
14. Turn on the target machine.

## Updating Enhanced Locked Print NX Application and Filter

### Updating from Ver.1.2.x to Ver.1.3.x

#### Note

- It is not possible to update directly from Ver1.2.x to Ver1.4.x.
- To do this procedure, you will need the product key of the Enhanced Locked Print NX Application currently installed.
- Make sure to turn off the Auto Off Timer. If the timer is left on, the machine will enter Auto Off Mode while the installation is in progress, causing the installation to fail.

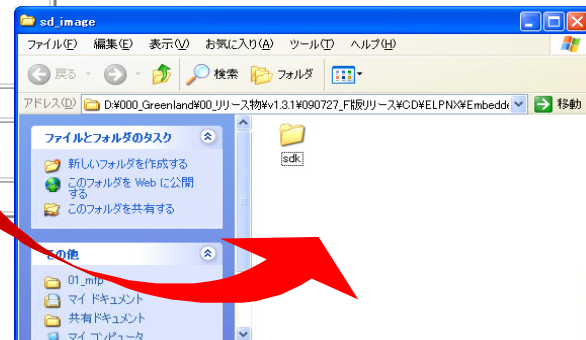
### Enhanced Locked Print NX Application

#### For MFP, LP, and 4-line LCD models:

1. Prepare the applications related to the "Enhanced Locked Print NX Package" on your PC.
2. Unzip the zip file of the "Enhanced Locked Print NX Package" on your PC.
3. Open the "readme.html" from the unzipped file.

#### RICOH:

Device Name	Update Image
Aficio MP 2550 / 2550B / 3350 / 3350B	
Aficio MP 4000 / 4000B / 5000 / 5000B	<a href="#">remote installer</a>
Aficio MP C2050 / C2550	
Aficio MP C6000 / C7500	
Aficio MP C2800 / C3300	<a href="#">remote installer</a>
Aficio MP C4000 / C5000	
Aficio MP 6001 / 7001 / 8001 / 9001	
Aficio MP 171	<a href="#">remote installer</a>
Aficio SP 8200DN	<a href="#">remote installer</a>
Aficio SP C420DN	<a href="#">remote installer</a>
Aficio SP C820DN / C821DN	<a href="#">remote installer</a>



4. Click the "remote installer" of the target machine
5. Copy the zip file on your PC.
6. Login to the ELP Administrative Tool.
7. Export the system configuration file.

#### Note

See the "Exporting/Importing the System Configuration File" section of the "ELP Administrator's Guide."

8. Ask a machine administrator to disable the ELP NX application using Web Image Monitor.
9. Uninstall the ELP NX Filter using Web Image Monitor
10. Install the ELP NX Filter using Web Image Monitor.

**★ Important**

When the ELP NX Filter is uninstalled, all print jobs stored in memory are erased.

11. Deactivate the product license using the Remote Manager.
12. Uninstall the ELP NX Application using the Remote Manager.
13. Install the new version (the update) of the ELP NX Application using Remote Manager.
14. Reissue the product license using Remote Manager.
15. Store the obtained product license in the target machine using Remote Manager.

**↓ Note**

For details about steps from 11 to 15, see the "Uninstallation Procedure" section of the "Remote Manager Operation Guide."

16. Turn the main power of the target machine OFF/ON.
17. Login to the ELP Administrative Tool.
18. Import the system configuration file.

**↓ Note**

See the "Exporting/Importing the System Configuration File" section of the "ELP Administrator's Guide."

19. Turn the main power of the target machine OFF/ON.
20. Ask a machine administrator to confirm that the ELP NX application has been successfully updated to the target version, and that the application is operating normally.



## Updating from Ver.1.3.x to Ver.1.4.x

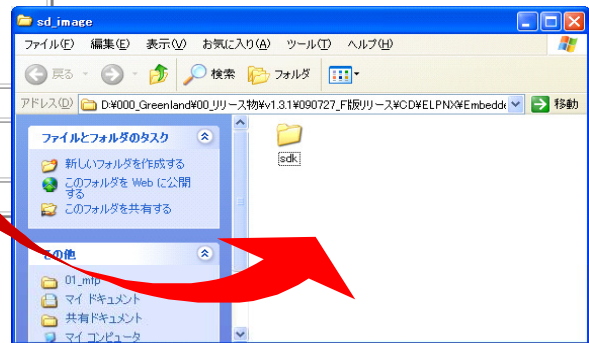
### Enhanced Locked Print NX Application

#### For MFP, LP, and 4-line LCD models:

1. Make sure the applications necessary to use the "Enhanced Locked Print NX Package" are running on the PC.
2. Unzip the zip file for the "Enhanced Locked Print NX Package".
3. Open the "readme.html" from the unzipped file.

#### RICOH:

Device Name	Update Image
Aficio MP 2550 / 2550B / 3350 / 3350B	<a href="#">remote installer</a>
Aficio MP 4000 / 4000B / 5000 / 5000B	
Aficio MP C2050 / C2550	
Aficio MP C6000 / C7500	<a href="#">remote installer</a>
Aficio MP C2800 / C3300	
Aficio MP C4000 / C5000	
Aficio MP 6001 / 7001 / 8001 / 9001	
Aficio MP 171	<a href="#">remote installer</a>
Aficio SP 8200DN	<a href="#">remote installer</a>
Aficio SP C420DN	<a href="#">remote installer</a>
Aficio SP C820DN / C821DN	<a href="#">remote installer</a>



4. Click the "remote installer" link for the target machine.
5. Copy the zip file onto your PC.
6. Install the ELP NX Filter using Web Image Monitor.

#### Note

It is not necessary to uninstall the ELP NX Filter v1.3.x.x.

7. Install the new version of the ELP NX Application using the Remote Manager.
8. Turn the main power of the target machine OFF/ON.
9. Ask a machine administrator to confirm that the ELP NX application has been successfully updated to the target version, and that the application is operating normally.

## CAP Card Registration Tool (Cardreg)

### Note

- Make sure that the Cardreg version is the same as the CAP/ELP version.
- Make sure to turn off the Auto Off Timer. If the timer is left on, the machine will enter Auto Off Mode while the installation is in progress, causing the installation to fail.

### Updating from Ver.1.2.x to Ver.1.3.x

1. Ask a machine administrator to disable the Cardreg using the operation panel or web Image Monitor.
2. Uninstall the Cardreg using the Remote Manager or WebImageMonitor.
3. Install the Cardreg (capreg\_install.zip) using the Remote Manager or WebImageMonitor.
4. Turn the target machine OFF/ON.

### Updating from Ver.1.3.x to Ver.1.4.x

1. Ask a machine administrator to disable the Cardreg using the operation panel or Web Image Monitor.
2. Install the Cardreg (capreg\_upadte.zip) using the Remote Manager or WebImageMonitor.
3. Turn the target machine OFF/ON.

## Appendix

### Matrix of Available Installation/Activation Tools

#### For MFP models:

	Installation Destination	Action	WIM	Remote Manager	SD Card
CAP	Target Machine	Installation	Yes	Yes	Yes
		Activation	No	Yes	No
		Version Up Activation	Yes	Yes	No
CAP-ES	Server	Installation	No	No	No
		Activation	No	No	No
ELP-NX APP	Target Machine	Installation	Yes	Yes	Yes
		Activation	No	Yes	No
		Version Up Activation	Yes	Yes	Yes
ELP-NX Filter	Target Machine	Installation	Yes	No	Yes
		Activation	-	-	-
		Version Up Activation	Yes	No	No
Cardreg	Target Machine	Installation	Yes	No	Yes
		Activation	-	-	-

#### For LP and 4-Line LCD models:

	Installation Destination	Action	WIM	Remote Manager	SD Card
CAP	Target Machine	Installation	Yes	Yes	No
		Activation	No	Yes	No
		Version Up Activation	Yes	Yes	No
CAP-ES	Server	Installation	No	No	No
		Activation	No	No	No
ELP-NX APP	Target Machine	Installation	Yes	Yes	No
		Activation	No	Yes	No
		Version Up Activation	Yes	Yes	No
ELP-NX Filter	Target Machine	Installation	Yes	No	No
		Activation	-	-	-
		Version Up Activation	Yes	No	No
Cardreg	Target Machine	Installation	Yes	No	No
		Activation	-	-	-

- CAP: Card Authentication Package Embedded Type
- CAP-ES: Card Authentication Package Server Type
- ELP-NX APP: Enhanced Locked Print - NX Application
- ELP-NX Filter: Enhanced Locked Print - NX Filter
- Cardreg: Card Registration Tool
- WIM: Web Image Monitor
- -: Not necessary

---

## Installation File Types

---

### SD Card

---

- Unzipped folder of each application

### Remote Manager

---

- Zip file of each application

### Web Image Monitor

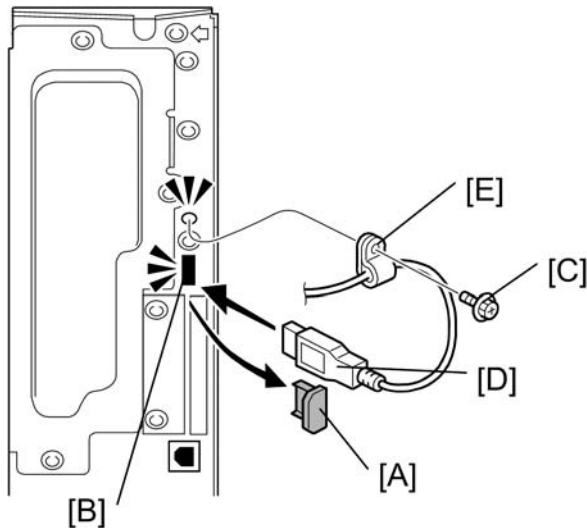
---

- All applications except ELP-NX Filter: Zip file (same as RM)
- ELP-NX Filter: Unzipped folder in the /sdk/webinstaller folder.

## USB Connection of the Card Reader

USB logo certification requires fixing a USB cable to a USB slot of the copier so that no other device can be connected to the USB slot of the copier.

For AL-C1 (D009/D011/D012/D013)



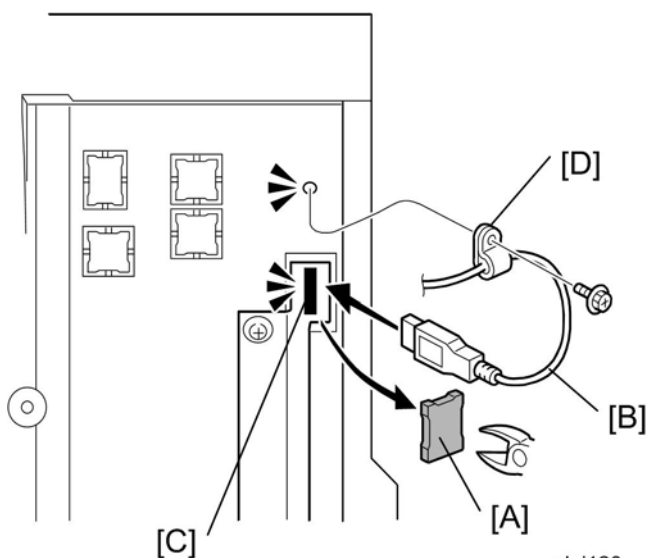
gl\_i119

1. Remove the cap [A] of the USB slot [B] on the controller left bracket
2. Remove the screw [C] on the controller bracket.
3. Insert the USB cable [D] into the USB slot [B].
4. Attach the clamp [E] to the USB cable, and then attach the clamp to the controller left cover (⌀ x 1: This is the screw removed in step 2).

### Note

Recommended clamp: P/N: 11050323

For R-C5 (D017/D018/D019/D020)



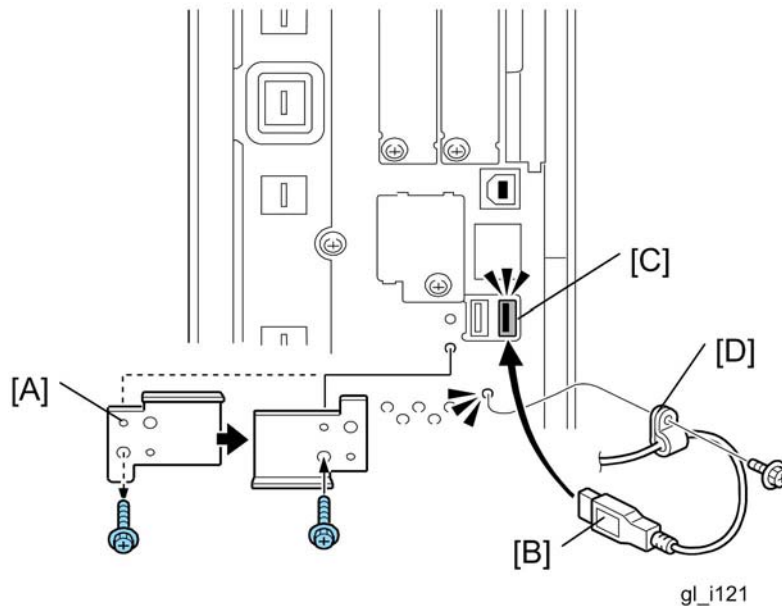
gl\_i120

1. Cut off the piece [A] of the controller plastic cover.
2. Insert the USB cable [B] into the USB slot [C].
3. Attach the clamp [D] to the USB cable, and then attach the clamp to the plastic cover (⚙️ x 1).

**Note**

Recommended clamp; P/N: 11050323  
 Recommended screw; P/N: 04503008N

For V-C2 (D014/D015)



1. Remove the USB slot cover [A] (⚙️ x 1).
2. Turn the USB slot cover 180 degrees, and then reattach it to the controller unit.
3. Insert the USB cable [B] into the USB slot [C].
4. Attach the clamp [D] to the USB cable, and then attach the clamp to the controller unit (⚙️ x 1: This is the screw removed in step 1).

**Note**

Recommended clamp; P/N: 11050323

**Reissued: 30-Aug-10**

Model: CAP/ELP	Date: 31-May-10	No.: RD489003a
----------------	-----------------	----------------

**RTB Reissue**

The items in ***bold italics*** have been corrected.

Subject: Card Authentication Package Lapnet Version V1.4 Installation Guide		Prepared by: T. Nihei	
From: 1st Overseas Tech Support Sec., 1st PQM Dept.			
Classification:	<input type="checkbox"/> Troubleshooting	<input type="checkbox"/> Part information	<input type="checkbox"/> Action required
	<input type="checkbox"/> Mechanical	<input type="checkbox"/> Electrical	<input type="checkbox"/> Service manual revision
	<input type="checkbox"/> Paper path	<input type="checkbox"/> Transmit/receive	<input type="checkbox"/> Retrofit information
	<input type="checkbox"/> Product Safety	<input checked="" type="checkbox"/> Other ( )	<input checked="" type="checkbox"/> Tier 2

This RTB has been issued to announce the Card Authentication Package Lapnet Version V1.4 Installation Guide release information.

# Installation Procedure

for

"Card Authentication Package" and  
"Enhanced Locked Print NX"  
(Lapnet Version)

Date:  
Re-issued: 2010/8  
Issued: 2009/08/21



## Models and Supported VM Versions

For each model listed, please use the VM version shown (or newer).

Model Name	VM Ver.
D017/ D018/D019/D020	V4.16.07 or later
D009/ D011/D012/D013	V4.16.07 or later
D014/D015	V4.16.07 or later
G179	V4.16.07 or later
D023/D025	V4.16.07 or later
D027/D029	V4.16.07 or later
D037/D038/C040/D041	V4.16.07 or later
G190	V4.16.07 or later
D091/D092	V4.18 or later
D084/D085	V4.18 or later
D062/D063/D065/D066	V5.05.01 or later
G188/G189	V5.05.01 or later
M047	V5.07 or later
D067/D068/D069/D072	V6.02.04 or later
D081/D082	V7.01 or later
<b>M065/M066</b>	<b>V7.02</b>

# Installation

---

## Overview

---

There are several combinations for using "Card Authentication Package" and "Enhanced Locked Print NX".

- **Embedded Type A:** This is for a customer who wants to use "Card Authentication Package" and "Enhance Locked Print NX".
- **Embedded Type B:** This is for a customer who wants to use only "Card Authentication Package".
- **Server Type A:** This is for a customer who wants to use "Card Authentication Package Enterprise Server" and "Enhance Locked Print NX".
- **Server Type B:** This is for a customer who wants to use only "Card Authentication Package Enterprise Server".

Here is the matrix of possible combinations.

	<b>Embedded Type A</b>	<b>Embedded Type B</b>	<b>Server Type A</b>	<b>Server Type B</b>
CAP	Yes	Yes	Yes	Yes
CAP-ES	No	No	Yes	Yes
CRT	Yes	Yes	No	No
ELP-NX	Yes	No	Yes	No

- CAP: Card Authentication Package
- CAP-ES: Card Authentication Package Enterprise Server
- ELP-NX: Enhanced Locked Print NX (Application and Filter)
- CRT: Card Registration Tool for CAP

---

## Confirmation Points before Installation

---

- Make sure that the firmware of the **target machine** is the latest version.
- Make sure that the firmware of the **VM card** is the latest version.
- Check the following SP settings;  
All bits of SP5401-162 (Extend Certification Detail) must be set to "0".  
Bit 0 of SP5401-230 (Customized Authentication) must be set to "0".
- ***CAP and ELP require that the device's Auto Off Timer be set to 5 minutes or longer. This is because the device might not work correctly if it enters Sleep Mode before the VM, CAP and ELP applications finish starting up.***

## Installation of Card Authentication Package for MFP models

### "Working with the Machine"

#### ↓ Note

- Make sure to turn off the Auto Off Timer. If the timer is left on, the machine will enter Auto Off Mode while the installation is in progress, causing the installation to fail.

1. Install a card reader device in a suitable location.
2. Connect the USB cable from the card reader device to the USB slot of the target machine.

#### ↓ Note

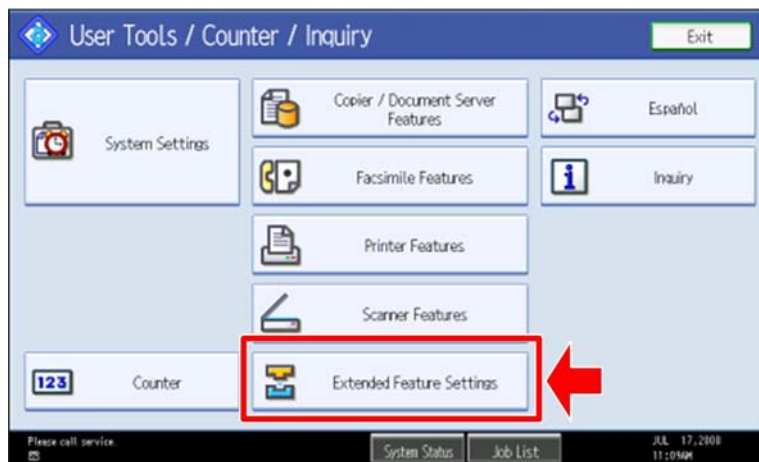
- The position of the USB slot may vary depending on the machine.

3. Secure the cable clamp to the USB slot.

#### ↓ Note

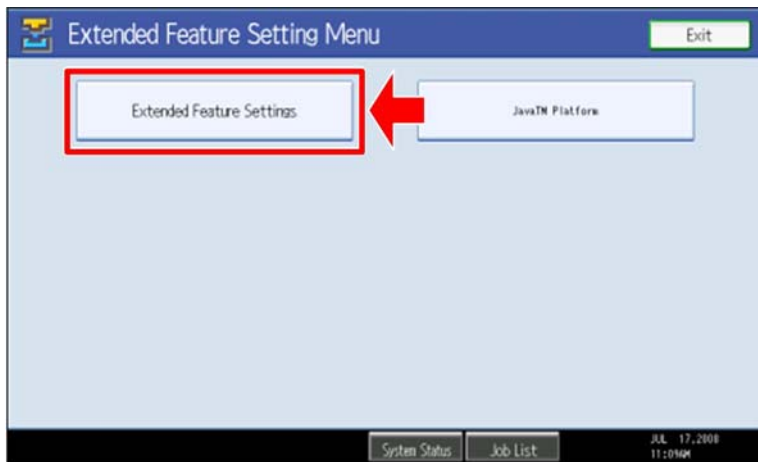
The procedure for the card reader installation depends on the machine. For details, see "USB Connection of the Card Reader" in the "Appendix" section.

4. Install the VM card in the service slot of the target machine.
5. Turn on the target machine.
6. Turn off the Auto Off Timer.
7. Ask a machine administrator to login to the target machine with the login name and password of the machine's administrator.



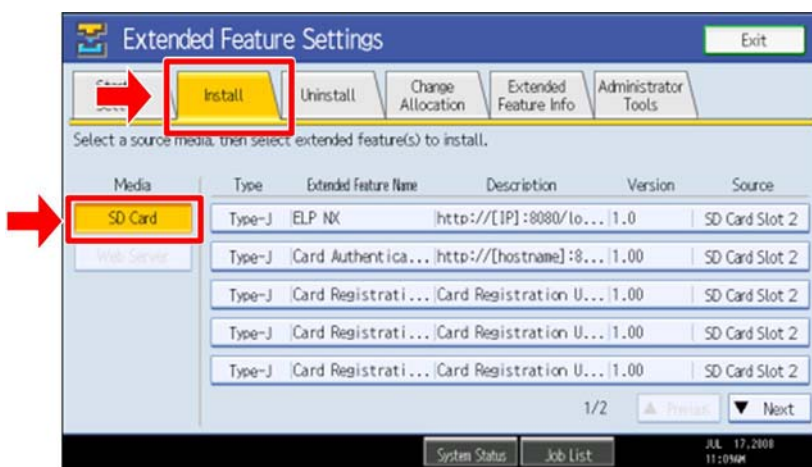
gl\_i104

8. Enter the "User Tools", and then press "Extended Feature Settings" on the LCD.



gl\_i105

9. Press "Extended Feature Settings" on the LCD.



gl\_i106

10. Press the "Install" tab, and then press "SD Card".

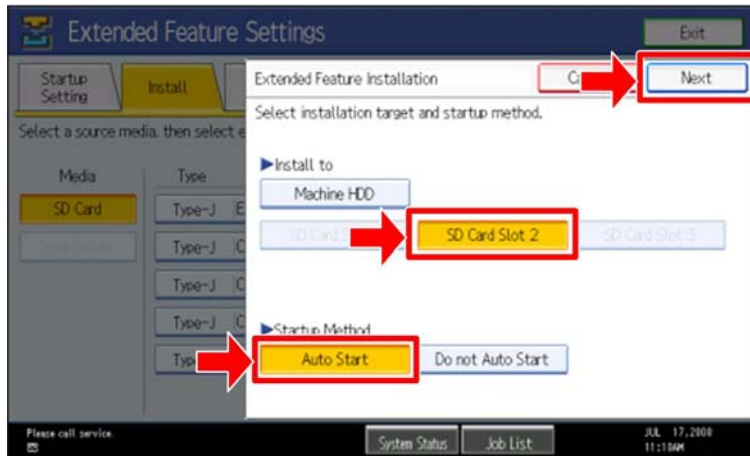
**The following table shows the destination of the installed SDK application.**

Application	Destination
Card Authentication Package	SD Card
Card Registration Tool for CAP	SD Card
Enhanced Locked Print NX Application	SD Card
Enhanced Locked Print NX Filter	HDD

11. Press the SDK application bar (except ELP NX-Filter) that you want to install.

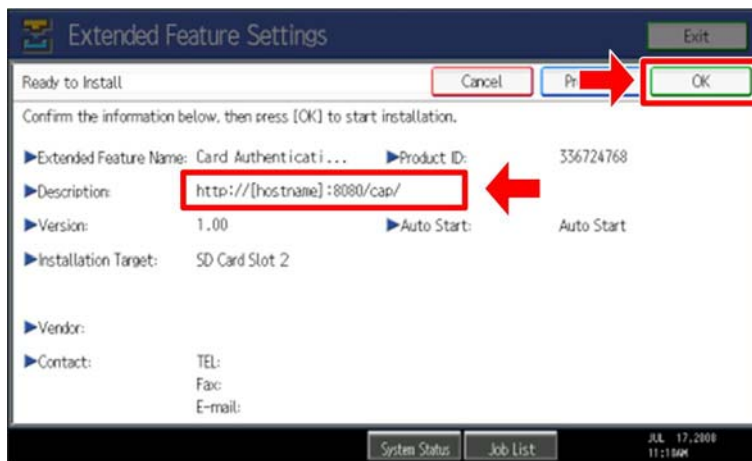
**Note**

Do not install the "Enhanced Locked Print NX-Filter" in the SD card. The ELP NX Filter must be installed in the HDD of the target machine. See step 16 for how to install it.



gl\_i107

12. Press "SD Card Slot 2" and "Auto Start"
13. Press "Next" to continue this installation procedure.



gl\_i108

14. Check if the displayed SDK application name is correct.

**Note**

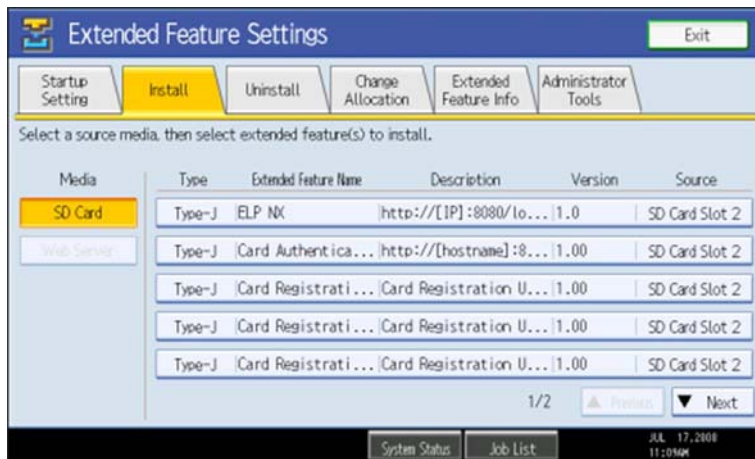
- If the displayed SDK application is not what you want to install, check the contents of the VM card and retry this installation.

15. Press "OK" to complete this installation.

**Note**

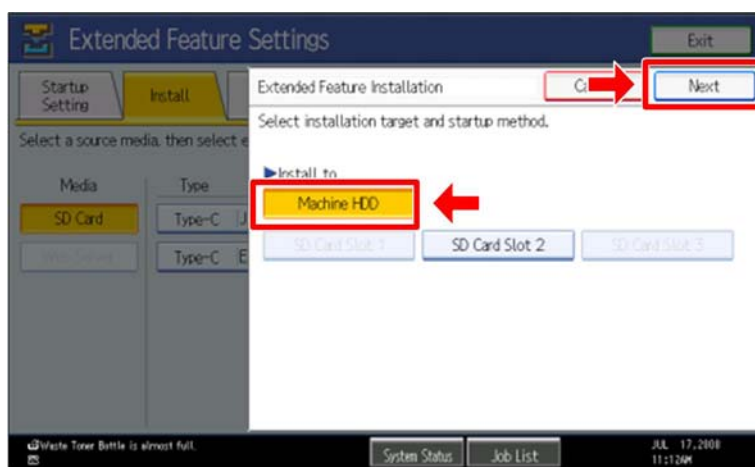
Install the following applications from the SD card in the service slot with the operation panel; exactly which applications to install will depend on the customer's circumstances.

- Card Authentication Package
- Enhanced Locked Print NX Application
- Card Registration Tool for CAP



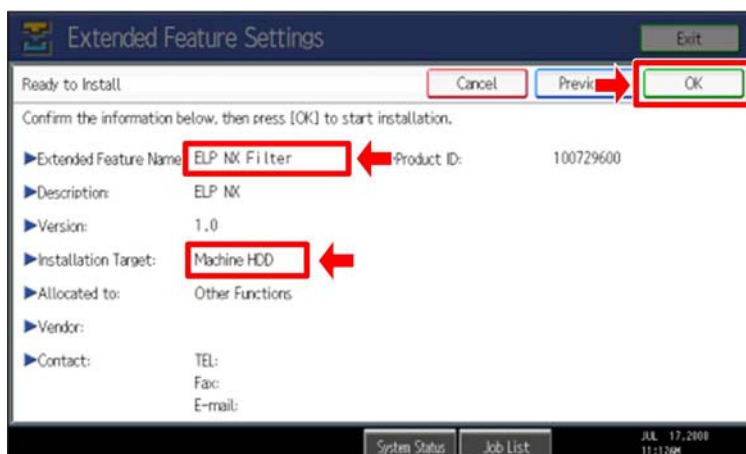
gl\_i109

16. Press the "Enhanced Locked Print NX Filter" bar in the display shown above.



gl\_i113

17. Press "Machine HDD", and then press "Next".



gl\_i111

18. Check if the displayed SDK application name is correct and "Machine HDD" is selected as the installation target.

**Note**

- If the displayed SDK application is not what you want to install, check the contents of the VM card and retry this installation.

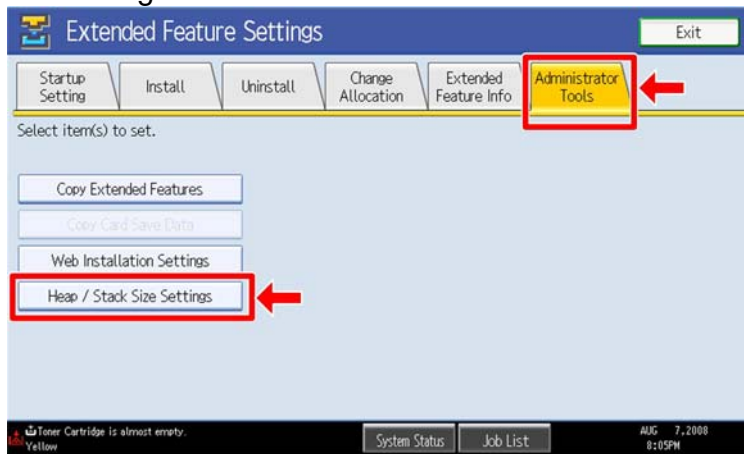
19. Press "OK" to complete this installation.

20. Allocate the Function key (on the operation panel) for the Java VM applications if

the customer wants to use a key other than "Other Functions" (default).

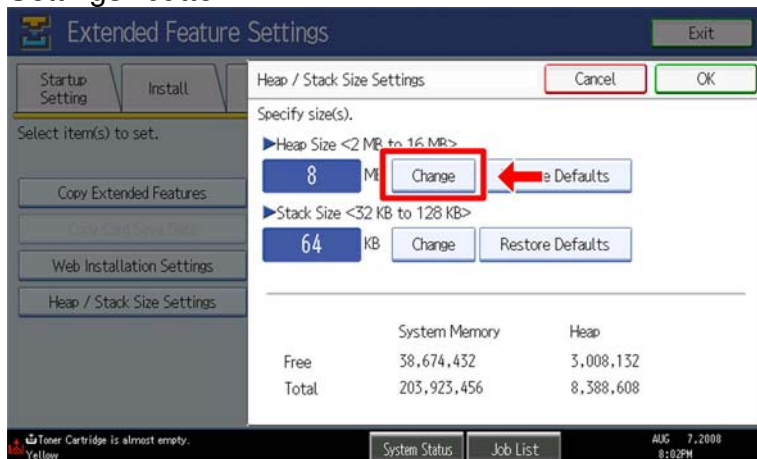
21. Enter the "Extended Features Settings".

- "User Tools/Counter" > "Extended Features Settings" > "Extended Features Settings"



gl\_i116

22. Press the "Administrator Tools" tab, and then press the "Heap/ Stack Size Settings" button.



gl\_i117

23. Press the "Change" button.



gl\_i118

24. Input an appropriate value (see the table below) with the numeric keys on the operation panel, and then press the "# (Enter)" key. Required heap size for the "Copy Extended Feature" depends on a combination of installed applications. For details, refer to the table below.

CAP	ELP-NX	GlobalScan NX	Required Heap Size
Yes	-	-	8 MB
Yes	Yes	-	16 MB
Yes	Yes	Yes	16 MB
Yes	-	Yes	16 MB

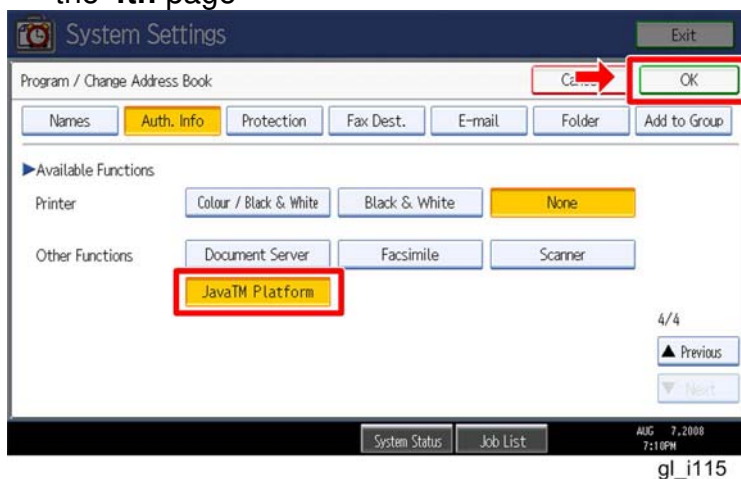
25. Press the "OK" button to return to the previous screen.
26. Press the "User Tools/Counter" key to exit the UP mode.
27. Turn the target machine off and on.

### ***"Working with the PC"***

28. Configure the card reader settings with the Card Authentication Package Web UI.
29. Turn the target machine off and on.

### ***"Working with the Machine"***

30. Enable "Java TM Platform" for each user with the Address Book Manager.
  - "User Tools/Setting" > "System Settings" > Administrator Tools" > Address Book Management" > select a user icon > "Auth. Info" > "Other Functions" on the **4th** page



31. Set the Auto Off Timer to "5 minutes".
32. Check if the card reader works normally.
  - Press the "Other Function" key for "SDK application" on the operation panel.
  - Select "Card Registration Tool for CAP".
  - Press "Obtain Card ID" on the LCD. After the "Set the card to register" message appears, hold the card over the card reader.
  - Check to see that the card ID is displayed on the LCD of the target machine. (If the card ID is not displayed, the card may not be available. In that case, register the card ID.)

#### **Note**

For details about steps from **28 to 32**, see the operation instructions for "Setting Up the Card Reader".

**The following step 33 should be done by a field service representative.**

33. Uninstall the "Card Registration Tool" with the operation panel if the customer wants to delete it.



## Installation of Card Authentication Package for LP and 4-line LCD Models

### "Working with the Machine"

#### ↓ Note

- Make sure to turn off the Auto Off Timer. If the timer is left on, the machine will enter Auto Off Mode while the installation is in progress, causing the installation to fail.

1. Install a card reader device in a suitable location.
2. Connect the USB cable from the card reader device to the USB slot of the target machine.

#### ↓ Note

- The position of the USB slot may vary depending on the machine.

3. Secure the cable clamp to the USB slot.

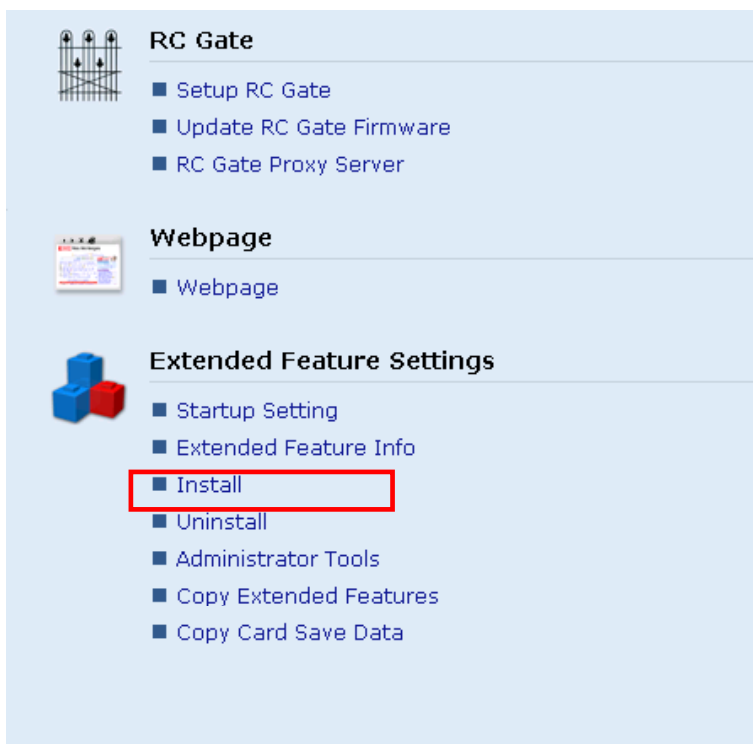
#### ↓ Note

The procedure for the card reader installation depends on the machine. For details, see "USB Connection of the Card Reader" in the "Appendix" section.

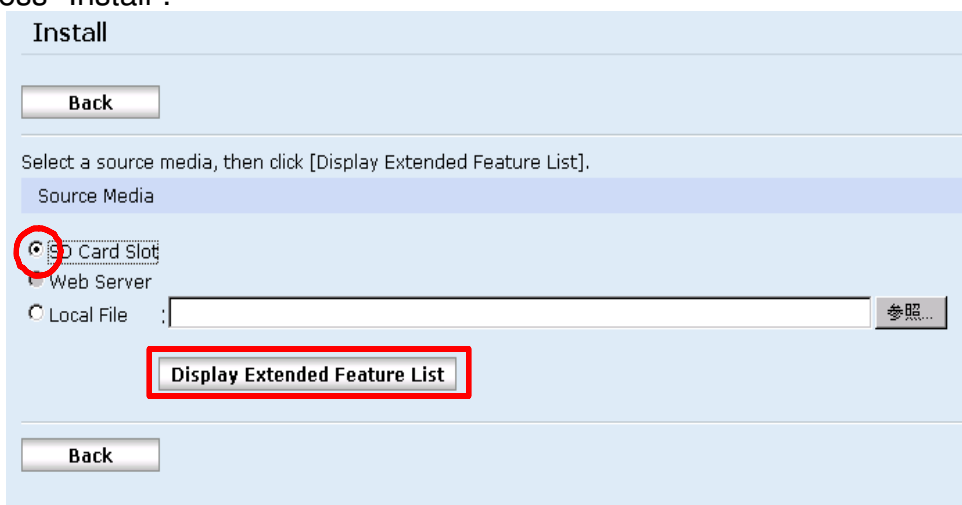
4. Install the VM card in the service slot of the target machine.
5. Turn on the target machine.
6. Turn off the Auto Off Timer.
7. Run the Web Image Monitor for the target machine.
8. Ask a machine administrator to login to the target machine with the login name and password of the machine's administrator.



9. Press "Configuration" in the main display.



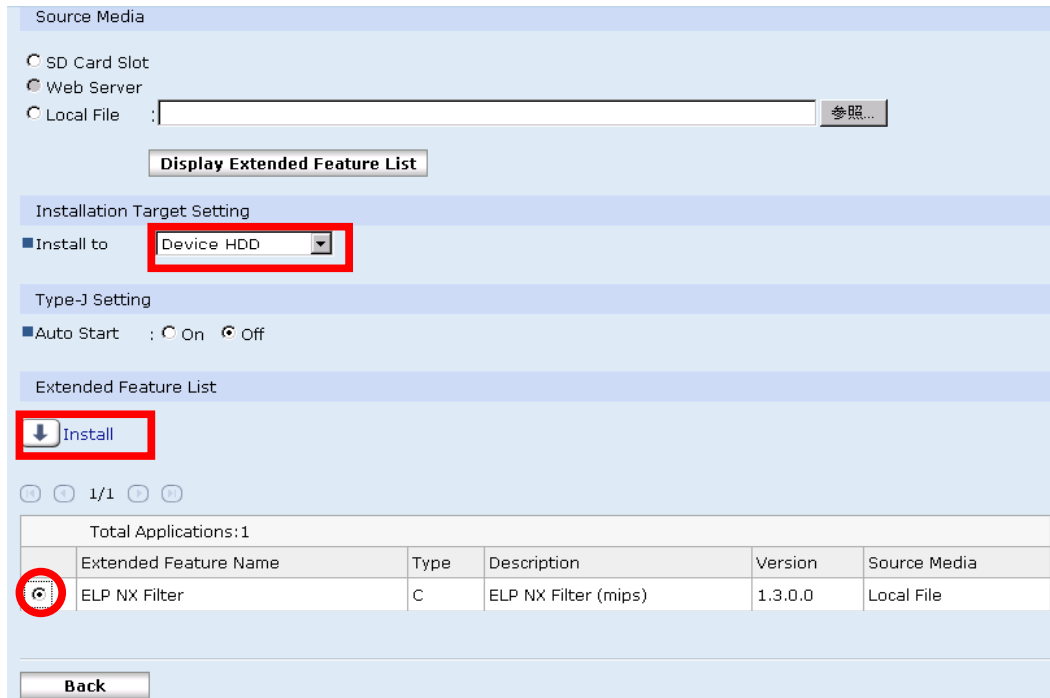
10. Press "Install".



11. Select "SD Card Slot" button and press "Display Extended Feature List"

**Note**

Make sure that the correct application file name and folder.



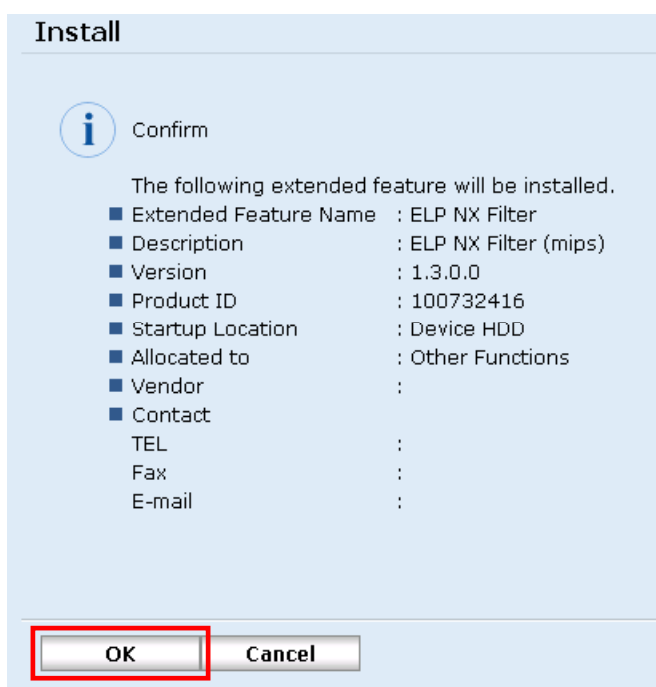
12. Select the destination of the installed SDK application.

The following table shows the destination of the installed SDK application.

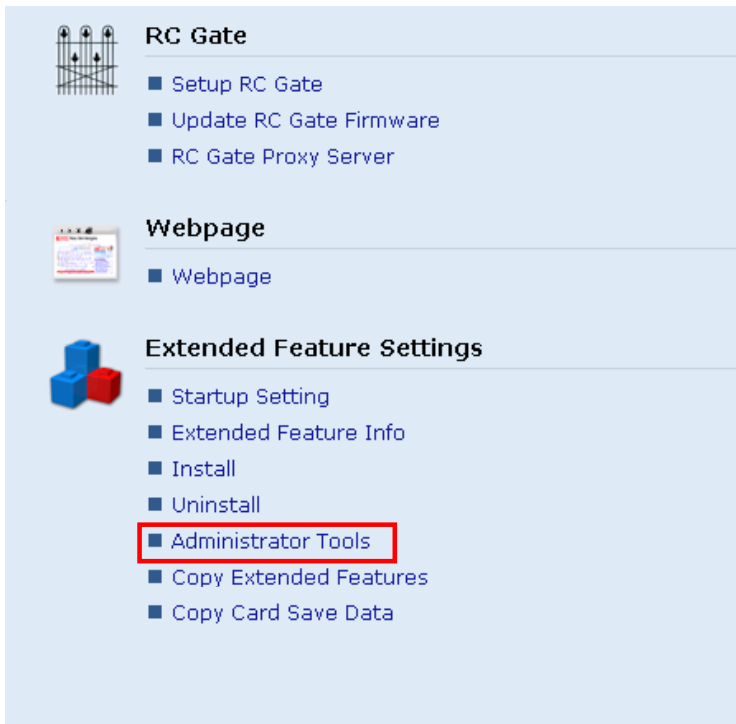
Application	Destination
Card Authentication Package	SD Card
Card Registration Tool for CAP (4-line LCD model only)	SD Card
Enhanced Locked Print NX Application	SD Card
Enhanced Locked Print NX Filter	HDD

13. Press the radio button of the SDK application that you want to install.

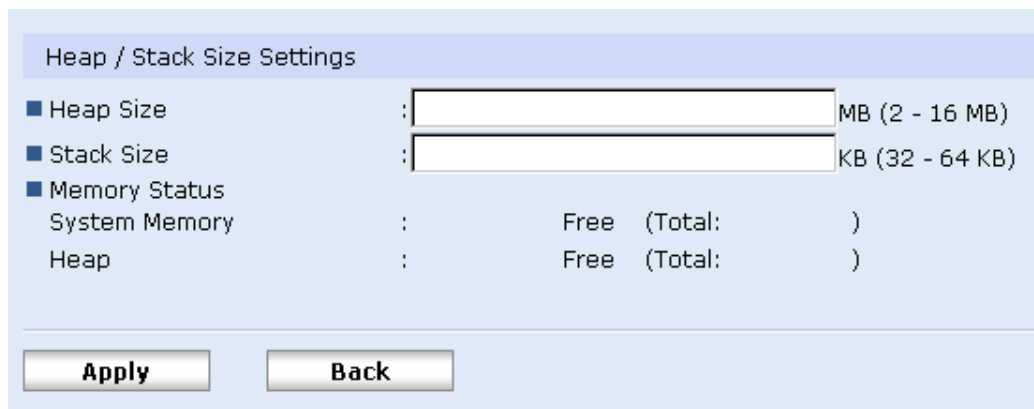
14. Press "Install".



15. Check the information for the installed SDK application.
16. Press "OK" to complete this installation.
17. If you want to install other SDK application, perform from step 11.



18. Press "Administrator Tools" in the mail view.



19. Input an appropriate value of the Heap size (see the table below) then press "Apply".

Required heap size for the "Copy Extended Feature" depends on a combination of installed applications. For details, refer to the table below.

CAP	ELP-NX	GlobalScan NX	Required Heap Size
Yes	-	-	8 MB
Yes	Yes	-	16 MB
Yes	Yes	Yes	16 MB
Yes	-	Yes	16 MB

20. Turn the target machine off and on.

**The following steps from 21 to 29 should be done by a machine administrator.**

21. Configure the card reader settings with the Card Authentication Package Web UI.

22. Run the Web Image monitor for the target machine.

23. Login to the target machine with the login name and password of the machine's administrator.

24. Select "Address Book"

Address List

Back

Change Add User Add Group Delete Maintenance

View: All Search for: Registration No.

1/2 Page : Go Display Items : 10 Number of Regi

	Registration No.	Name	Freq.	Title 1	Title 2	Title 3	User Code	Fax Destination
<input checked="" type="radio"/>	00001	asomura	On	---	---	---	asomura	---
<input type="radio"/>	00002	masa	On	OPQ	---	---	masa	---

25. Select Registration No. and press "Change".

Authentication Information

User Code : asomura

SMTP Authentication :  Specify Other Auth. Info below:  Do not Specify

Login User Name :

Login Password :  Change

Folder Authentication :  Specify Other Auth. Info below:  Do not Specify

Login User Name :

Login Password :  Change

LDAP Authentication :  Specify Other Auth. Info below:  Do not Specify

Login User Name :

Login Password :  Change

Available Functions

Copier:  Full Color  Two-color  Single Color  Black & White

Color Copy Mode Limitation:  Limit to Auto Color Selection  Full Color / Auto Color Selection

Printer:  Color  Black & White

Other functions:  Document Server  Facsimile  Scanner  JavaTM/X

26. Select "JavaTM/X" and press "OK".

27. Turn the target machine off and on.

28. Set the Auto Off Timer to "5 minutes".

**The following steps 29 and 30 are only for 4-line LCD models.**

29. Check if the card reader works normally.

- Press the "Other Function" key for "SDK application" on the operation panel.
- Select "Card Registration Tool for CAP".

- Press "Obtain Card ID" on the LCD. After the "Set the card to register" message appears, hold the card over the card reader.
- Check to see that the card ID is displayed on the LCD of the target machine. (If the card ID is not displayed, the card may not be available. In that case, register the card ID.)

 **Note**

For details about step 21 to 30 see the operation instructions for "Setting Up the Card Reader".

**The following step 30 should be done by a field service representative.**

30. Uninstall the "Card Registration Tool" with the operation panel if the customer wants to delete it.

# Remote Updating Procedure

---

## Updating Card Authentication Package

---

### ★ Important

- First update the Java VM Platform if the Java VM Platform and Card Authentication Package are supposed to be updated at the same time.
- Make sure that the IC Card Reader setting is not set to "KeyStore" and the IC card reader is not connected. This is because under these conditions, CAP deactivation/un-install may not work properly on some models.

### Updating from Ver.1.2.x to Ver.1.3.x or from Ver.1.3.x (without the VM update) to Ver.1.4.x

1. Ask a machine administrator to disable the Card Authentication Package with the operation panel or Web Image Monitor.
2. Launch the Remote Manager.
3. Add a Card Authentication Package for updating in the Remote Manager

#### ⬇ Note

See the "Adding a Card Authentication Package in the "Remote Manager" sub section of the "Card Authentication Package Installation" section of the Remote Manager Operation Guide.

4. Install the Card Authentication Package for updating in the target machine

#### ⬇ Note

See the "Installing the Card Authentication Package in the Target Machine" sub section of the "Card Authentication Package Installation" section of the Remote Manager Operation Guide.

5. Turn off and on the target machine.
6. Ask a machine administrator to check if the version of the Card Authentication Package is updated and if the installed Card Authentication Package is "Starting Up"

### Updating from Ver.1.3.x (with the VM update) to Ver.1.4.x

1. Remove the IC card reader from the target machine.
2. Export the system configuration file.
3. Select Enhanced Authentication Management to "NO".
4. Uninstall Card Authentication Package v1.3.x.x using the Remote Manager.
5. Turn off the target machine.
6. Update the VM card.
7. Turn on the target machine.
8. Install Card Authentication Package v1.4.x.x using the Remote Manager.

**Note**

Make sure that the file name is following the list below.

Update path	Model	File name
v1.3.xx -> v1.4.xx	MFP, 4-line LCD	cap_mfp.zip
v1.3.xx -> v1.4.xx	LP	cap_lp.zip

**Important**

Make sure that the heap size is set to the appropriate value. To set the heap size, see Step 29 of the CAP installation procedure on pg. 11 above.

9. Turn off and on the target machine.
10. Import the system configuration file.
11. Turn off and connect the IC card reader to the target machine,.
12. Turn on the target machine.

### Updating from Ver.1.2.x to Ver.1.4.x

1. Update from Ver.1.2.x to Ver.1.3.x according to the procedure on pg. 17.
2. Update from Ver.1.3.x to Ver.1.4.x according to the procedure mentioned above. This is because, the VM version should be updated when updating the CAP from Ver.1.3.x to Ver.1.4.x.

**Note**

Make sure that the file name is following the list below.

Update path	Model	File name
v1.2.xx -> v1.3.xx -> v1.4.xx	MFP, 4-line LCD	cap_mfp_vm.zip
v1.2.xx -> v1.3.xx -> v1.4.xx	LP	cap_lp_vm.zip



## Updating Enhanced Locked Print NX Application and Filter

### Updating from Ver.1.2.x to Ver.1.3.x

#### Note

- It is not possible to update Ver1.2.X directly to Ver1.4.x.
- Make sure to turn off the Auto Off Timer. If the timer is left on, the machine will enter Auto Off Mode while the installation is in progress, causing the installation to fail.

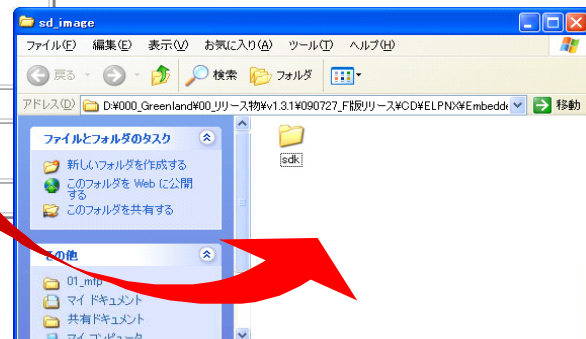
### Enhanced Locked Print NX Application

#### For MFP, LP, and 4-line LCD models:

1. Prepare the applications related to the "Enhanced Locked Print NX Package" on your PC.
2. Unzip the zip file of the "Enhanced Locked Print NX Package" on your PC.
3. Open the "readme.html" from the unzipped file.

#### RICOH:

Device Name	Update Image
Aficio MP 2550 / 2550B / 3350 / 3350B	
Aficio MP 4000 / 4000B / 5000 / 5000B	<a href="#">remote installer</a>
Aficio MP C2050 / C2550	
Aficio MP C6000 / C7500	
Aficio MP C2800 / C3300	<a href="#">remote installer</a>
Aficio MP C4000 / C5000	
Aficio MP 6001 / 7001 / 8001 / 9001	
Aficio MP 171	<a href="#">remote installer</a>
Aficio SP 8200DN	<a href="#">remote installer</a>
Aficio SP C420DN	<a href="#">remote installer</a>
Aficio SP C820DN / C821DN	<a href="#">remote installer</a>



4. Click the "remote installer" of the target machine
5. Copy the zip file on your PC.
6. Login to the ELP Administrative Tool.
7. Export the system configuration file.

#### Note

See the "Exporting/Importing the System Configuration File" section of the "ELP Administrator's Guide."

8. Ask a machine administrator to disable the ELP NX application using Web Image Monitor.
9. Uninstall the ELP NX Filter using Web Image Monitor
10. Install the ELP NX Filter using Web Image Monitor.

#### Important

When the ELP NX Filter is uninstalled, all print jobs stored in memory are erased.

11. Uninstall the ELP NX application using the Remote Manager.

12. Install the new version (the update) of the ELP NX application using Remote Manager.
13. Turn the main power of the target machine OFF/ON.
14. Login to the ELP Administrator Tool.
15. Import the system configuration file.

 **Note**

See the “Exporting/Importing the System Configuration File” section of the “ELP Administrator’s Guide.”

16. Turn the main power of the target machine OFF/ON.
17. Ask a machine administrator to confirm that the ELP NX application has been successfully updated to the target version, and that this application is operating normally.

## Updating from Ver.1.3.x to Ver.1.4.x

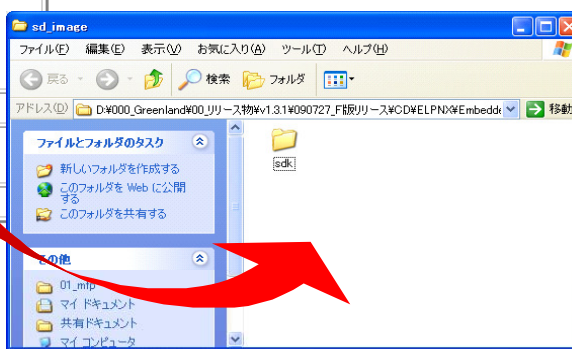
### Enhanced Locked Print NX Application

**For MFP, LP, and 4-line LCD models:**

1. Make sure the applications necessary to use the "Enhanced Locked Print NX Package" are running on the PC.
2. Unzip the zip file of the "Enhanced Locked Print NX Package" on your PC.
3. Open the "readme.html" from the unzipped file.

RICOH:

Device Name	Update Image
Aficio MP 2550 / 2550B / 3350 / 3350B	
Aficio MP 4000 / 4000B / 5000 / 5000B	<a href="#">remote installer</a>
Aficio MP C2050 / C2550	
Aficio MP C6000 / C7500	
Aficio MP C2800 / C3300	<a href="#">remote installer</a>
Aficio MP C4000 / C5000	
Aficio MP 6001 / 7001 / 8001 / 9001	
Aficio MP 171	<a href="#">remote installer</a>
Aficio SP 8200DN	<a href="#">remote installer</a>
Aficio SP C420DN	<a href="#">remote installer</a>
Aficio SP C820DN / C821DN	<a href="#">remote installer</a>



4. Click the "remote installer" of the target machine
5. Copy the zip file on your PC.
6. Install the ELP NX Filter using Web Image Monitor.

**Note**

It is not necessary to uninstall the ELP NX Filter v1.3.x.x.

7. Install the new version of the ELP NX application using Remote Manager.
8. Turn the main power of the target machine OFF/ON.
9. Ask a machine administrator to confirm that the ELP NX application has been successfully updated to the target version, and that this application is operating normally.

## CAP Card Registration Tool (Cardreg)

### Note

- Make sure that the Cardreg version is the same as the CAP/ELP version.
- Make sure to turn off the Auto Off Timer. If the timer is left on, the machine will enter Auto Off Mode while the installation is in progress, causing the installation to fail.

### Updating from Ver.1.2.x to Ver.1.3.x

1. Ask a machine administrator to disable the Cardreg with the operation panel or Web Image Monitor.
2. Uninstall the Cardreg using Remote Manager or Web Image Monitor
3. Install the Cardreg (capreg\_install.zip) using Remote Manager or Web Image Monitor.
4. Turn off and on the target machine.

### Updating from Ver.1.3.x to Ver.1.4.x

1. Ask a machine administrator to disable the Cardreg with the operation panel or Web Image Monitor.
2. Install the Cardreg (capreg\_upadte.zip) using Remote Manager or Web Image Monitor.
3. Turn off and on the target machine.

## Appendix

### Matrix of Available Installation/Activation Tools

#### For MFP models:

	Installation Destination	Action	WIM	Remote Manager	SD Card
CAP	Target Machine	Installation	Yes	Yes	Yes
		Activation	No	Yes	No
		Version Up	Yes	Yes	No
		Activation	-	-	-
CAP-ES	Server	Installation	No	No	No
		Activation	No	No	No
ELP-NX APP	Target Machine	Installation	Yes	Yes	Yes
		Activation	No	Yes	No
		Version Up	Yes	Yes	Yes
		Activation	No	Yes	No
ELP-NX Filter	Target Machine	Installation	Yes	No	Yes
		Activation	-	-	-
		Version Up	Yes	No	No
		Activation	-	-	-
Cardreg	Target Machine	Installation	Yes	No	Yes
		Activation	-	-	-

#### For LP and 4-Line LCD models:

	Installation Destination	Action	WIM	Remote Manager	SD Card
CAP	Target Machine	Installation	Yes	Yes	No
		Activation	No	Yes	No
		Version Up	Yes	Yes	No
		Activation	-	-	-
CAP-ES	Server	Installation	No	No	No
		Activation	No	No	No
ELP-NX APP	Target Machine	Installation	Yes	Yes	No
		Activation	No	Yes	No
		Version Up	Yes	Yes	No
		Activation	No	Yes	No
ELP-NX Filter	Target Machine	Installation	Yes	No	No
		Activation	-	-	-
		Version Up	Yes	No	No
		Activation	-	-	-
Cardreg	Target Machine	Installation	Yes	No	No
		Activation	-	-	-

- CAP: Card Authentication Package Embedded Type
- CAP-ES: Card Authentication Package Server Type
- ELP-NX APP: Enhanced Locked Print - NX Application
- ELP-NX Filter: Enhanced Locked Print - NX Filter
- Cardreg: Card Registration Tool
- WIM: Web Image Monitor
- -: Not necessary

---

## Installation File Types

---

### SD Card

---

- Unzipped folder of each application

### Remote Manager

---

- Zip file of each application

### Web Image Monitor

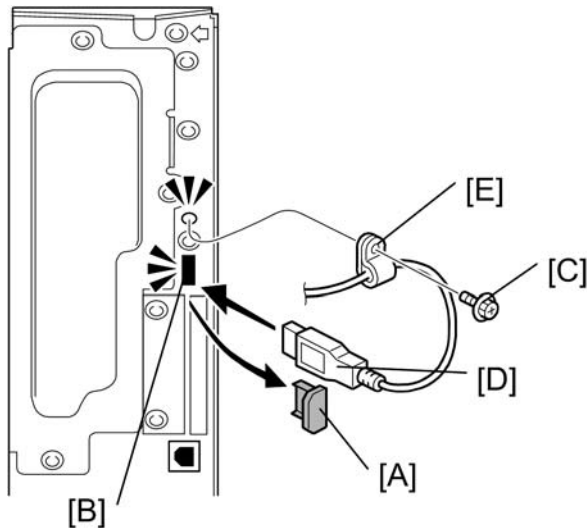
---

- All applications except ELP-NX Filter: Zip file (same as RM)
- ELP-NX Filter: Unzipped folder in the /sdk/webinstaller folder.

## USB Connection of the Card Reader

USB logo certification requires fixing a USB cable to a USB slot of the copier so that no other device can be connected to the USB slot of the copier.

For AL-C1 (D009/D011/D012/D013)



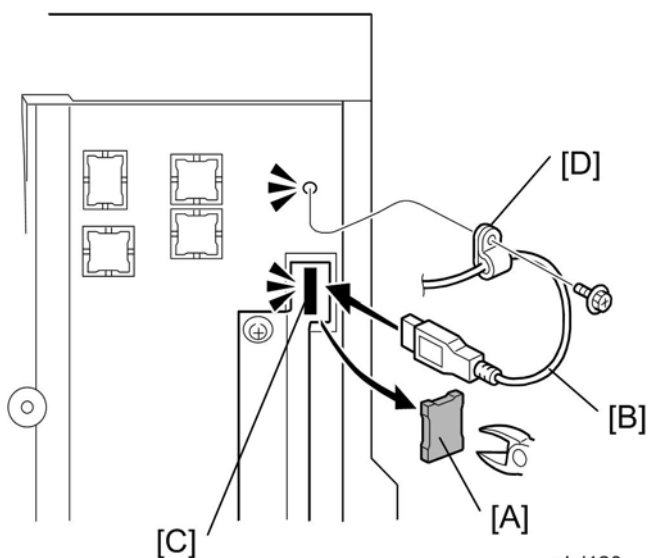
gl\_i119

1. Remove the cap [A] of the USB slot [B] on the controller left bracket
2. Remove the screw [C] on the controller bracket.
3. Insert the USB cable [D] into the USB slot [B].
4. Attach the clamp [E] to the USB cable, and then attach the clamp to the controller left cover (⌀ x 1: This is the screw removed in step 2).

### Note

Recommended clamp: P/N: 11050323

R-C5 (D017/D018/D019/D020)



gl\_i120

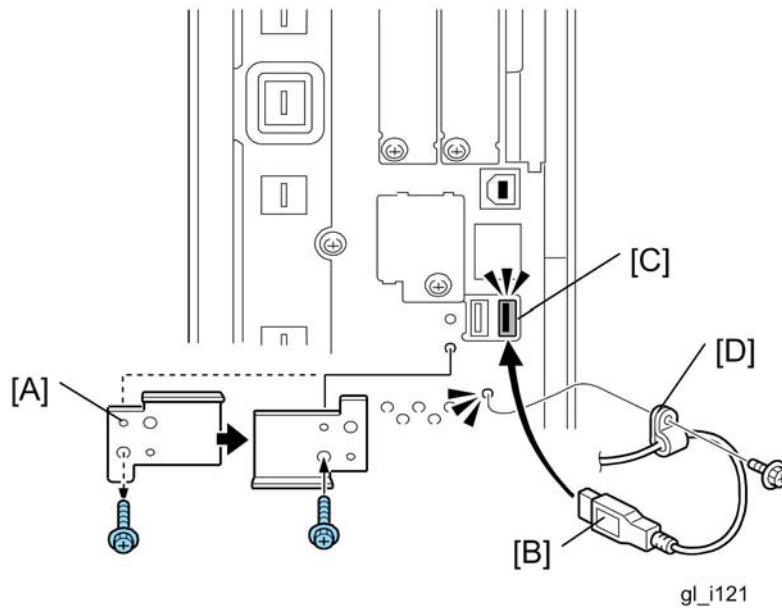
1. Cut off the piece [A] of the controller plastic cover.
2. Insert the USB cable [B] into the USB slot [C].
3. Attach the clamp [D] to the USB cable, and then attach the clamp to the plastic cover (🔩 x 1).

⬇ Note

Recommended clamp; P/N: 11050323  
Recommended screw; P/N: 04503008N



## V-C2 (D014/D015)



1. Remove the USB slot cover [A] (⚙️ x 1).
2. Turn the USB slot cover 180 degrees, and then reattach it to the controller unit.
3. Insert the USB cable [B] into the USB slot [C].
4. Attach the clamp [D] to the USB cable, and then attach the clamp to the controller unit (⚙️ x 1: This is the screw removed in step 1).

**Note**

Recommended clamp: P/N: 11050323

**Reissued: 25-Nov-11**

Model: CAP	Date: 02-Jul-10	No.: RD489005b
------------	-----------------	----------------

**RTB Reissue**

The items in bold italics have been added.

Subject: Release Note: CAP update module for Lapnet		Prepared by: T.Nihe	
From: 2nd Tech Service Sect., MFP/Printer Tech Service Dept.			
Classification:	<input type="checkbox"/> Troubleshooting	<input type="checkbox"/> Part information	<input type="checkbox"/> Action required
	<input type="checkbox"/> Mechanical	<input type="checkbox"/> Electrical	<input type="checkbox"/> Service manual revision
	<input type="checkbox"/> Paper path	<input type="checkbox"/> Transmit/receive	<input type="checkbox"/> Retrofit information
	<input checked="" type="checkbox"/> Other ( )		

This RTB has been issued to announce the firmware release information for the **CAP update module for Lapnet**.

Version	Program No.	Effective Date
<b><i>1.4.6.0-01</i></b>	<b><i>D4895101D</i></b>	<b><i>November 2011 production</i></b>
1.4.4.0-01	D4895101B	May 2011 production
1.4.0.0-01	D4895101A	June 2010 production
1.3.0.0-01	D4895101	June 2010 production

Version	Modified Points or Symptom Corrected
<b><i>1.4.6.0-01</i></b>	<p><b><i>Supported:</i></b>  <b><i>Support for the following devices has been added:</i></b>  <b><i>Sh-MF1 (M052/M053/M054)</i></b>  <b><i>OR-C1 (D120/D121/D122/D139/D140/D141)</i></b>  <b><i>Sh-P1 (M020/M021)</i></b>  <b><i>S-P3 (M080)</i></b></p> <p><b><i>Fixed:</i></b>  <b><i>File downloads will fail if CAP's Web UI is accessed using Internet Explorer with HTTPS.</i></b></p> <p><b><i>Update the Java VM to the latest version before installing this update.</i></b></p>
1.4.4.0-01	<p>Fixed:</p> <ol style="list-style-type: none"> <li>Fixed an issue that allows a user to still access the device even after logging out when Device Authentication is used with CAP. The issue only occurs when the user attempted to login to the device before the CAP service has started shortly after the device has been turned on.</li> </ol> <p>Other changes:</p> <ol style="list-style-type: none"> <li>Support for Model DI-C1.5 (D104/D106) has been added.</li> </ol>
1.4.0.0-01	<p>Other changes:</p> <ol style="list-style-type: none"> <li>Model R-C5.5 (D084/ D085) / Model AL-C1.5 (D091/D092) / Model V-C3 (D081/D082) / Model Kr-P2 (M047) are now supported.</li> <li>CAP supports up to 1,000 individual user accounts.</li> </ol>

**Reissued: 25-Nov-11**

Model: CAP		Date: 02-Jul-10	No.: RD489005b
Version	Modified Points or Symptom Corrected		
	<ol style="list-style-type: none"><li>3. Device Authentication in CAP supports only Basic Authentication.</li><li>4. Saved password is supported with CAP.</li><li>5. Capital or lower case conversion can be selected</li></ol>		
1.3.0.0-01	Other changes: <ol style="list-style-type: none"><li>1. Model AL-P1 (G179) / Model G-P3 (G190) / Model AP-P2 (G188/G189) / Model S-C4 (D067/D068/D069/D072) are now supported.</li><li>2. CAP now supports ELP-NX FS.</li><li>3. CAP now supports the LDAP V3 protocol.</li><li>4. CAP can now search all sub-trees in any LDAP environment.</li><li>5. CAP now supports the use of Kerberos with multiple domains.</li></ol>		

**Reissued: 02-Jul-12**

Model: CAP	Date: 19-Nov-08	No.: RD489001k
------------	-----------------	----------------

RTB Reissue

The items in bold italics have been corrected.

Subject: Release Note: CAP		Prepared by: S. Maruyama	
From: 1st Solution Support Sect., Solution Support Dept.			
Classification:	<input type="checkbox"/> Troubleshooting	<input type="checkbox"/> Part information	<input type="checkbox"/> Action required
	<input type="checkbox"/> Mechanical	<input type="checkbox"/> Electrical	<input type="checkbox"/> Service manual revision
	<input type="checkbox"/> Paper path	<input type="checkbox"/> Transmit/receive	<input type="checkbox"/> Retrofit information
	<input checked="" type="checkbox"/> Other ( )		

This RTB has been issued to announce the firmware release information for the **CAP**.

Version	Program No.	Effective Date	Availability of RFU
<b>1.4.8.0-01</b>	<b><i>D4890001L</i></b>	<b><i>June 2012 production</i></b>	<b><i>Not available</i></b>
1.4.7.0-01	D4890001K	June 2012 production	Not available
1.4.6.0-01	D4890001J	November 2011 production	Not available
1.4.4.0-01	D4890001H	May 2011 production	Not available
1.4.3.0-01	D4890001G	February 2011 production	Not available
1.4.2.0-01	D4890001F	November 2010 production	Not available
1.4.1.0-01	D4890001E	August 2010 production	Not available
1.4.0.0-01	D4890001D	April 2010 production	Not available
1.3.0.0-01	D4890001C	July 2009 production	Not available
1.2.0.0-01	D4890001B	April 2009 production	Not available
1.10a	D4890001A	1st Mass production	Not available

**Note: Definition of Availability of RFU via @Remote**

**“Available”** The firmware can be updated via RFU or SD card.

**“Not available”**: The firmware can only be updated via SD card.

Version	Modified Points or Symptom Corrected
<b>1.4.8.0-01</b>	<p><b><i>Supported:</i></b>  <b><i>Support for the following devices has been added:</i></b>  <b><i>MT-C5</i></b>  <b><i>GR-C1</i></b>  <b><i>S-C5</i></b></p> <p><b><i>Update the Java VM to the latest version before installing this update.</i></b></p>
1.4.7.0-01	<p>Supported:            Support for the following devices has been added:            AP-C3            AT-C3            AL-C2</p>
1.4.6.0-01	<p>Supported:            Support for the following devices has been added:            Sh-MF1 (M052/M053/M054)            OR-C1 (D120/D121/D122/D139/D140/D141)            Sh-P1 (M020/M021)            S-P3 (M080)</p>

**Reissued: 02-Jul-12**

Model: CAP	Date: 19-Nov-08	No.: RD489001k
------------	-----------------	----------------

Version	Modified Points or Symptom Corrected
	Fixed: File downloads will fail if CAP's Web UI is accessed using Internet Explorer with HTTPS.
1.4.4.0-01	Fixed: 1. Fixed an issue that allows a user to still access the device even after logging out when Device Authentication is used with CAP. The issue only occurs when the user attempted to login to the device before the CAP service has started shortly after the device has been turned on.  Other changes: 1. Support for Model DI-C1.5 (D104/D106) has been added.
1.4.3.0-01	Other changes: Models Z-C1(M022/M024/M026/M028) and S-C4.5(D115/D116) are now supported.
1.4.2.0-01	Other changes: 1. Models AT-C2.5(D086/D087) and AP-C2.5(D088/D089) are now supported. 2. Simplified Chinese is now supported.
1.4.1.0-01	Other changes: Model Z-P1(M065/M066) is now supported.
1.4.0.0-01	Other changes: 1. Model R-C5.5 / Model AL-C1.5 / Model V-C3 / Model Kr-P2 are now supported. 2. CAP supports up to 1,000 individual user accounts. 3. Device Authentication in CAP supports only Basic Authentication. 4. Saved password is supported with CAP. 5. Capital or lower case conversion can be selected
1.3.0.0-01	Other changes: 1. Model AL-P1 / Model G-P3 / Model AP-P2 / Model S-C4 are now supported. 2. CAP now supports ELP-NX FS. 3. CAP now supports the LDAP V3 protocol. 4. CAP can now search all sub-trees in any LDAP environment. 5. CAP now supports the use of Kerberos with multiple domains.
1.2.0.0-01	Other changes: 1. Users can login to all Device User Authentication types (Basic, Windows, LDAP authentication) without entering a password. 2. The use of a proxy or regular username can be configured for various authentication types. This will apply to both: - Login at the operation panel - Submission of print jobs 3. A single sign-on can be used for CAP and Global Scan NX. 4. Model AT-C2 / Model AP-C2 / Model DI-C1 / Model MT-C4 are now supported.

**Reissued: 02-Jul-12**

Model: CAP		Date: 19-Nov-08	No.: RD489001k
<b>Version</b>	<b>Modified Points or Symptom Corrected</b>		
1.10a	1st Mass production  Other changes: 1. Model R-C5 / Model AL-C1 / Model V-C2 are supported.		

**Reissued: 02-Jul-12**

Model: CAP	Date: 02-Jul-10	No.: RD489004d
------------	-----------------	----------------

**RTB Reissue**

The items in bold italics have been added.

Subject: Release Note: CAP update module for Activation		Prepared by: S. Maruyama	
From: 1st Solution Support Sect., Solution Support Dept.			
Classification:	<input type="checkbox"/> Troubleshooting	<input type="checkbox"/> Part information	<input type="checkbox"/> Action required
	<input type="checkbox"/> Mechanical	<input type="checkbox"/> Electrical	<input type="checkbox"/> Service manual revision
	<input type="checkbox"/> Paper path	<input type="checkbox"/> Transmit/receive	<input type="checkbox"/> Retrofit information
	<input checked="" type="checkbox"/> Other ( )		

This RTB has been issued to announce the firmware release information for the **CAP update module for Activation**.

Version	Program No.	Effective Date	Availability of RFU
<b>1.4.8.0-01</b>	<b>D4895001F</b>	<b>June 2012 production</b>	<b>Not available</b>
1.4.7.0-01	D4895001E	June 2012 production	Not available
1.4.6.0-01	D4895001D	November 2011 production	Not available
1.4.4.0-01	D4895001B	May 2011 production	Not available
1.4.0.0-01	D4895001A	June 2010 production	Not available
1.3.0.0-01	D4895001	June 2010 production	Not available

**Note: Definition of Availability of RFU via @Remote**

“Available” The firmware can be updated via RFU or SD card.

“Not available”: The firmware can only be updated via SD card.

Version	Modified Points or Symptom Corrected
<b>1.4.8.0-01</b>	<p><b>Supported:</b>  <b>Support for the following devices has been added:</b>  <b>MT-C5</b>  <b>GR-C1</b>  <b>S-C5</b></p> <p><b>Update the Java VM to the latest version before installing this update.</b></p>
1.4.7.0-01	<p>Supported:  Support for the following devices has been added:  AP-C3  AT-C3  AL-C2</p>
1.4.6.0-01	<p>Supported:  Support for the following devices has been added:  Sh-MF1 (M052/M053/M054)  OR-C1 (D120/D121/D122/D139/D140/D141)  Sh-P1 (M020/M021)  S-P3 (M080)</p> <p>Fixed:  File downloads will fail if CAP's Web UI is accessed using Internet Explorer with HTTPS.</p>

**Reissued: 02-Jul-12**

Model: CAP		Date: 02-Jul-10	No.: RD489004d
Version	Modified Points or Symptom Corrected		
1.4.4.0-01	<p>Fixed:</p> <ol style="list-style-type: none"> <li>Fixed an issue that allows a user to still access the device even after logging out when Device Authentication is used with CAP. The issue only occurs when the user attempted to login to the device before the CAP service has started shortly after the device has been turned on.</li> </ol> <p>Other changes:</p> <ol style="list-style-type: none"> <li>Support for Model DI-C1.5 (D104/D106) has been added.</li> </ol>		
1.4.0.0-01	<p>Other changes:</p> <ol style="list-style-type: none"> <li>Model R-C5.5 (D084/ D085) / Model AL-C1.5 (D091/D092) / Model V-C3 (D081/D082) / Model Kr-P2 (M047) are now supported.</li> <li>CAP supports up to 1,000 individual user accounts.</li> <li>Device Authentication in CAP supports only Basic Authentication.</li> <li>Saved password is supported with CAP.</li> <li>Capital or lower case conversion can be selected</li> </ol>		
1.3.0.0-01	<p>Other changes:</p> <ol style="list-style-type: none"> <li>Model AL-P1 (G179) / Model G-P3 (G190) / Model AP-P2 (G188/G189) / Model S-C4 (D067/D068/D069/D072) are now supported.</li> <li>CAP now supports ELP-NX FS.</li> <li>CAP now supports the LDAP V3 protocol.</li> <li>CAP can now search all sub-trees in any LDAP environment.</li> <li>CAP now supports the use of Kerberos with multiple domains.</li> </ol>		