

Safety Information

Read this manual carefully before you use this product and keep it handy for future reference. For safe and correct use, please be sure to read this sheet before using the equipment.

Safety During Operation

In this manual, the following important symbols are used:

WARNING:

Indicates a potentially hazardous situation which, if instructions are not followed, could result in death or serious injury.

CAUTION:

Indicates a potentially hazardous situation which, if instructions are not followed, may result in minor or moderate injury or damage to property.

WARNING:

- Confirm that the wall outlet is near the equipment and freely accessible, so that in event of an emergency, it can be unplugged easily.
- Disconnect the power plug (by pulling the plug, not the cable) if the power cable or plug becomes frayed or otherwise damaged.
- Disconnect the power plug (by pulling the plug, not the cable) if any of the following occurs:
 - You spill something into the equipment.
 - You suspect that your equipment needs service or repair.
 - he external housing of your equipment has been damaged. Disposal can take place at our authorized dealer.
- Use the AC adapter supplied with the equipment. Otherwise, a fire, an electric shock, a equipment failure might occur.
- Connect the equipment only to the power source described on the Setup Guide. Connect the power cord directly into a wall outlet and do not use an extension cord.
- Do not damage, break or make any modifications to the power cord. Do not place heavy objects on it. Do not pull it hard nor bend it more than necessary. These actions could cause an electric shock or fire.
- Do not plug in or out with wet hands.
- While thundering nearby, do not touch this equipment (Type BM1) to avoid a possible electric shock.
- For the Type BM1, please connect the telephone line after the power is on, and disconnect the telephone line before the power is off. If you do not follow the procedures, you might get an electric shock.
- The supplied power cord is for use with this equipment only. Do not use with other appliances. Doing so may result in fire, electric shock, or injury.

CAUTION:

- Protect the equipment from dampness or wet weather, such as rain and snow.
- Unplug the power cord from the wall outlet before you move the machine. While moving the equipment, you should take care that the power cord will not be damaged.
- When you disconnect the power plug from the wall outlet, always pull the plug (not the cable).
- Do not allow paper clips, staples, or other small metallic objects to fall inside the equipment.
- Keep the equipment away from humidity and dust. Otherwise a fire or an electric shock might occur.
- Do not place the equipment on an unstable or tilted surface. If it topples over, an injury might occur.
- Clean the plug end of the power cable at least once a year so as to avoid a possible fire.

CE

Declaration of Conformity

"The Product complies with the requirements of the EMC Directive 89/336/EEC and its amending directives and the Low Voltage Directive 73/23/EEC and its amending directives."

Notice to Users in EEA Countries

This product complies with the essential requirements and provisions of Directive 1999/5/EC of the European Parliament and of the Council of 9 March 1999 on radio equipment and telecommunications terminal equipment and the mutual recognition of their conformity.

Notice to Users Accessing Analog PSTN in EEA Countries

This product is designed to be able to access analog PSTN in all EEA countries. Local PSTN compatibility is dependent on software switch settings. Please contact your service representative if relocating this product to another country. In the event of problems, please contact your service representative in the first instance.

The CE Declaration of Conformity is available on the Internet at URL: http://www.ricoh.co.jp/fax/ce_doc/.

CE

Notice to Users in EEA Countries

This product complies with the essential requirements and provisions of Directive 1999/5/EC of the European Parliament and of the Council of 9 March 1999 on radio equipment and telecommunications terminal equipment and the mutual recognition of their conformity.

The CE Declaration of Conformity is available on the Internet at URL: http://www.ricoh.co.jp/fax/ce_doc/.

This product is only for use in EEA or other authorized countries. Outdoor use of this product in Belguim,France,Germany,Italy,or the Netherlands is prohibited.

Grounding

In order to prevent potentially hazardous electrical shock, provide means of connecting to the protective grounding conductor in the building, wiring those grounding conductors of power cable.

Information about Installed Software

Following is a list of the software included in this equipment:

- GPL/LGPL applicable software
- ash
- OpenSSL toolkit
- zlib
- Apache
- Expat
- Sablotron
- net-snmp
- Software for Digest Access Authentication
- mod_ssl

You can check the information about license and copyright of each software, by clicking a button linking to [License and Copyright Information] in the "RC Gate Monitor Login" page.

Trademarks

MS, Microsoft, and Windows are registered trademarks of Microsoft Corporation.

Other product names used herein are for identification purposes only and might be trademarks of their respective companies. We disclaim any and all rights to those marks.

- The product names of Windows® 2000 are as follows:
Microsoft® Windows® 2000 Professional
Microsoft® Windows® 2000 Server
Microsoft® Windows® 2000 Advanced Server
- The product names of Windows® XP are as follows:
Microsoft® Windows® XP Home Edition
Microsoft® Windows® XP Professional
- The product names of Windows Server™ 2003 are as follows:
Microsoft® Windows Server™ 2003 Standard Edition
Microsoft® Windows Server™ 2003 Enterprise Edition
Microsoft® Windows Server™ 2003 Web Edition
- The product names of Windows® NT 4.0 are as follows:
Microsoft® Windows NT® Workstation 4.0
Microsoft® Windows NT® Server 4.0

Remote Communication Gate

Type BN1/BM1

Symbols of Setup Guide

The following set of symbols is used in this manual.

WARNING:

This symbol indicates a potentially hazardous situation that might result in death or serious injury when you misuse the equipment without following the instructions under this symbol. Be sure to read the instructions, all of which are described in the Safety Information section.

CAUTION:

This symbol indicates a potentially hazardous situation that might result in minor or moderate injury or property damage that does not involve personal injury when you misuse the equipment without following the instructions under this symbol. Be sure to read the instructions, all of which are described in the Safety Information section.

* The statements above are notes for your safety.

Important

If this instruction is not followed, paper might be misfed, originals might be damaged, or data might be lost. Be sure to read this.

Preparation

This symbol indicates information or preparations required prior to operating.

Note

This symbol indicates precautions for operation, or actions to take after abnormal operation.

Limitation

This symbol indicates numerical limits, functions that cannot be used together, or conditions in which a particular function cannot be used.

[]

Keys and buttons that appear on the computer's display.

Sicherheitshinweise

Lesen Sie dieses Handbuch sorgfältig durch, bevor Sie das Gerät verwenden, und halten Sie es zur späteren Einsichtnahme griffbereit. Lesen Sie bitte zur Sicherheit und zur korrekten Verwendung diese Informationen, bevor Sie das Gerät verwenden.

Sicherheit beim Betrieb

Im vorliegenden Handbuch werden die folgenden wichtigen Symbole verwendet:

WARNUNG:

Dieses Symbol weist auf eine gefährliche Situation hin, die bei Nichtbeachtung der Anweisungen zu schweren Verletzungen oder Lebensgefahr führen kann.

ACHTUNG:

Dieses Symbol weist auf eine gefährliche Situation hin, die bei Nichtbeachtung der Anweisungen zu geringfügigen oder mittelschweren Verletzungen oder Sachschäden führen kann.

WARNUNG:

- Stellen Sie sicher, dass sich die Wandsteckdose in der Nähe des Geräts befindet und frei zugänglich ist, sodass der Netzstecker in einem Notfall schnell herausgezogen werden kann.
- Den Netzstecker (durch Ziehen des Netzsteckers, nicht des Kabels) trennen, wenn das Netzkabel oder der Netzstecker verschlissen oder anderweitig beschädigt ist.
- Den Netzstecker (durch Ziehen des Netzsteckers, nicht des Kabels) in den nachstehend genannten Fällen trennen:
 - In das Gerät ist Flüssigkeit gelangt.
 - Sie vermuten, dass das Gerät gewartet oder repariert werden muss.
 - Das äußere Gehäuse des Geräts ist beschädigt.
Die Entsorgung kann über einen unserer autorisierten Händler erfolgen.
- Verwenden Sie den mit dem Gerät gelieferten Wechselstromadapter. Andernfalls besteht Brand- oder Stromschlaggefahr oder es kann beim Gerät zu einer Fehlfunktion kommen.
- Schließen Sie das Gerät nur an die in der Installationsanleitung angegebene Stromquelle an. Das Netzkabel direkt in eine Wandsteckdose einstecken und kein Verlängerungskabel verwenden.
- Das Netzkabel nicht beschädigen, brechen oder modifizieren. Keine schweren Gegenstände auf das Netzkabel stellen. Nicht fest daran ziehen oder stärker als nötig biegen. Es besteht sonst Brand- oder Stromschlaggefahr.
- Den Netzstecker nicht mit feuchten Händen ein- oder ausstecken.
- Bei einem nahen Gewitter sollten Sie dieses Gerät (Typ BM1) auf keinen Fall berühren, um einen eventuellen Stromschlag zu vermeiden.
- Achten Sie beim Typ BM1 darauf, die Telefonleitung erst nach Einschalten der Stromversorgung anzuschalten und sie noch vor Ausschalten der Stromversorgung wieder abzuschalten. Wird diese Vorgehensweise nicht eingehalten, kann dies zu einem Stromschlag führen.
- Das mitgelieferte Netzkabel darf nur mit diesem Gerät verwendet werden. Verwenden Sie das Netzkabel nicht mit anderen Geräten. Ansonsten können Feuer, Stromschlag und Verletzungen verursacht werden.

ACHTUNG:

- Das Gerät vor Feuchtigkeit und feuchten Witterungsbedingungen, wie Regen und Schnee, schützen.
- Vor dem Umsetzen des Geräts das Netzkabel aus der Wandsteckdose ziehen. Beim Umsetzen des Geräts darauf achten, dass das Netzkabel nicht beschädigt wird.
- Beim Ausstecken des Netzsteckers aus der Wandsteckdose stets am Netzstecker (nicht am Kabel) ziehen.
- Darauf achten, das keine Büro- oder Heftklammern oder andere kleine Metallgegenstände in das Gerät fallen.
- Das Gerät nicht an feuchten und staubigen Orten aufstellen. Andernfalls besteht Brand- oder Stromschlaggefahr.
- Das Gerät nicht auf einer instabilen oder schrägen Fläche aufstellen. Wenn es umkippt, besteht Verletzungsgefahr.
- Reinigen Sie das Steckerende des Netzkabels mindestens einmal pro Jahr, um ein mögliches Feuer zu verhindern.



Konformitätserklärung

„Das Produkt entspricht den Anforderungen der EMV-Richtlinie 89/336/EWG und deren Ergänzungen sowie der Niederspannungsrichtlinie 73/23/EWG und deren Ergänzungen.“

Hinweis für Anwender in EEA-Ländern

Dieses Produkt entspricht den wesentlichen Anforderungen und Vorschriften der Richtlinie 1999/5/EG des Europäischen Parlaments und des Rates vom 9. März 1999 über Funkanlagen und Telekommunikationsendeinrichtungen sowie der gegenseitigen Anerkennung ihrer Konformität.

Hinweis für Benutzer eines öffentlichen analogen Telefonnetzes (PSTN) in EEA-Ländern

Dieses Produkt wurde so entwickelt, dass es auf analoge PSTN in allen EEA-Ländern zugreifen kann. Die PSTN-Kompatibilität vor Ort hängt von den Schalter-Einstellungen der Software ab. Wenden Sie sich bitte an den Kundendienst, wenn Sie dieses Gerät in einem anderen Land verwenden möchten. Wenn es zu Problemen kommt, wenden Sie sich bitte als Erstes an den Kundendienst.

Die CE-Konformitätserklärung ist im Internet unter folgender URL verfügbar: http://www.ricoh.co.jp/fax/ce_doc/.



Hinweis für Anwender in EEA-Ländern

Dieses Produkt entspricht den wesentlichen Anforderungen und Vorschriften der Richtlinie 1999/5/EG des Europäischen Parlaments und des Rates vom 9. März 1999 über Funkanlagen und Telekommunikationsendeinrichtungen sowie der gegenseitigen Anerkennung ihrer Konformität.

Die CE-Konformitätserklärung ist im Internet unter folgender URL verfügbar: http://www.ricoh.co.jp/fax/ce_doc/.

Dieses Produkt ist ausschließlich für die Verwendung in EEA-Ländern oder anderen autorisierten Ländern vorgesehen. In Belgien, Frankreich, Deutschland, Italien oder den Niederlanden ist die Verwendung dieses Produkts im Freien untersagt.

Erdung

Um mögliche gefährliche Stromschläge zu vermeiden, sollten Sie dafür sorgen, dass das Gerät an den schützenden Erdleiter im Gebäude angeschlossen wird und die Erdungsleiter des Netzkabels dort verdrahtet werden.

Overseas Affairs

RICOH EUROPE B.V.

"Nieuw Kronenburg"

Prof. W.H. Keesomlaan 1, 1183 DJ Amstelveen, The Netherlands

Tel.: 31-20-5474111

Lanier Europe B.V.

Drève de Willerieken, 20

B-1160 Bruxelles, Belgium

Tel.: 32-2-658-2411

NRG GROUP PLC

66 Chiltern Street, London W1U 4AG, U.K.

Tel.: 44-20-7465-1000

Lärmemission

Maschinenlärminformations-Verordnung 3. GPSGV:

Der höchste Schalldruckpegel beträgt 70 dB(A) oder weniger gemäß

EN ISO 7779

Setup Guide

Read this manual carefully before you use this product and keep it handy for future reference. For safe and correct use, please be sure to read the Safety Information sheet before using the equipment.

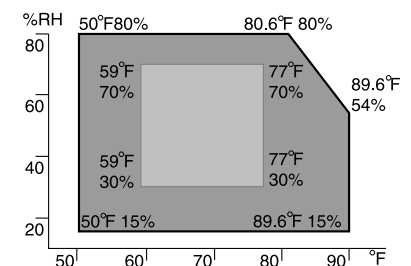
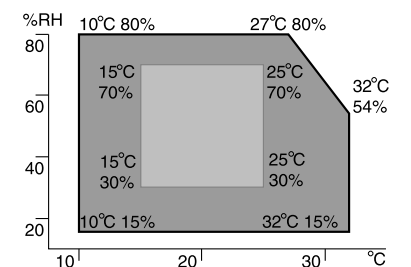
1 Checking the Setup Environment and Power Connection

1 Check the setup environment.

Place the equipment on the level and vibration free surface.

Place the equipment on a location that guarantees a space of 1 cm or more from the front/back/left/right sides of the equipment.

Place the equipment in the recommended temperature and humidity shown below:



Allowable range
Recommended range

Important

- When the equipment is moved from a cold to a warm location, or vice versa, internal dew condensation can occur. In this case, allow the equipment to acclimate to the new environment for at least one hour.
- Keep the equipment's power on during normal operation.

CAUTION

- Keep the equipment away from humidity and dust. Otherwise a fire or an electric shock might occur.
- Do not place the equipment on an unstable or tilted surface. If it topples over, an injury might occur.

Important

- Do not locate the equipment where it is exposed to:
 - direct sunlight
 - air conditioner, heater, or humidifier emission
 - electronic/magnetic interference from radios, televisions, or other electrical equipment
 - extreme heat, cold, or humidity
- Locate this equipment in a secure environment such as an enclosed office.
- This equipment supports manufacturer original I/O devices only.
- Connect this equipment and the image I/O devices to a responsibly administrated network that is protected by a firewall or a similar Internet security/virus protection facility.
- Choose reliable persons as the administrator and registrant. The administrator is responsible for management and operation of the equipment; the registrant is responsible for registering the equipment on the Communication Server. Both must read the "Operating Instructions" and "Setup Guide" carefully.

2 Check the power connection.

Use a 220-240V, 50Hz power source for this equipment.

WARNING

- Confirm that the wall outlet is near the equipment and easily accessible so as to be unplugged quickly in an emergency.
- Connect the equipment only to the power source described on this manual. Connect the power cord directly into a wall outlet and do not use an extension cord.
- Do not damage, break or make any modifications to the power cord. Do not place heavy objects on it. Do not pull it hard nor bend it more than necessary. These actions could cause an electric shock or fire.

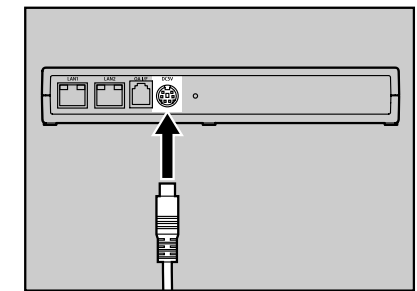
3 Connecting the Power Cable

WARNING

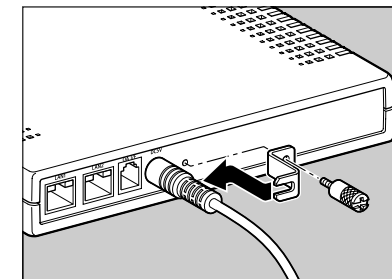
- The supplied power cord is for use with this equipment only. Do not use with other appliances. Doing so may result in fire, electric shock, or injury.
- Use the AC adapter supplied with the equipment. Otherwise, a fire, an electric shock, a equipment failure might occur.

1 Connect the AC adapter to the power cable.

2 Connect the AC adapter securely to the power socket of the equipment.



3 Secure the Power Cable with the Bracket and fix it with the screw.



Note

- Use a coin when you fix the screw.

4 Plug the power cable into the wall outlet.

Note

- The LED blinks when the equipment is warming up or in maintenance mode, and the orange and green LEDs are lit.

WARNING

- Do not plug in or out with wet hands.

WARNING

- For the Type BM1, please connect the telephone line after the power is on, and disconnect the telephone line before the power is off. If you do not follow the procedures, you might get an electric shock.

CAUTION

- When you disconnect the power plug from the wall outlet, always pull the plug (not the cable).

CAUTION

- Clean the plug end of the power cable at least once a year so as to avoid a possible fire.

4 Connecting the Telephone Line

Note

- Skip this procedure when you are setting up the Remote Communication Type BN1.

The procedures here show how to connect a telephone line to the Remote Communication Gate Type BM1.

WARNING

- While thundering nearby, do not touch this equipment to avoid a possible electric shock.

4.1 Common Line of Telephone and Facsimile

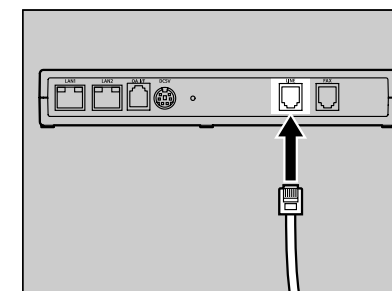
Follow the telephone line connection procedure below, when you use your facsimile line to communicate with the Communication Server.

Reference

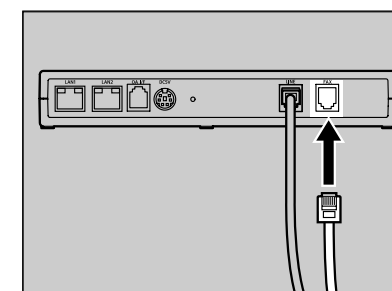
- See "Dial-up" in "Outline of the System."

1 Disconnect the telephone line cable from the LINE port of the facsimile.

2 Connect the telephone line cable thus disconnected, to the LINE port of this equipment.



3 Connect the supplied White Telephone Line Cable to the FAX port of this equipment.



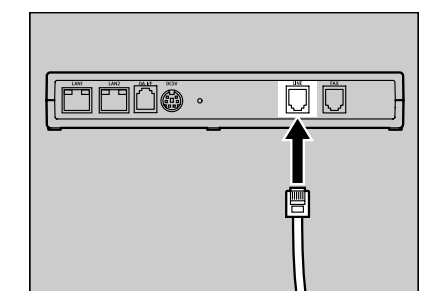
4 Connect the other end of the White Telephone Cable to the LINE port of the facsimile.

4.2 Telephone Line Exclusively Used for RC Gate

The following instructions describe the connection procedures of the telephone line, when the telephone line is used exclusively for this equipment.

1 Connect the telephone line cable to the telephone line socket exclusively prepared for this equipment.

2 Connect the other end of the telephone line cable to the LINE port of this equipment.



Note

- The FAX port will not be used.

2 Checking the Contents

1 Check the contents in the box according to the following list. If there is any item missing or damaged, please contact your service representative.

- The Equipment (Type BN1¹ or Type BM1)

¹ Wireless LAN card (RC Gate Wireless LAN Unit Type A) is available as an option for the Type BN1. The wireless LAN card will be installed by the service representative.

- Safety Information/Setup Guide (This manual)

- AC Adapter

- Power Cable

- Network Interface Cable

- Ferrite Core

- Power Cable Anchor Bracket

- Bracket Screw

- Stand

- Black Modular Cable for OA I/F port

- White Telephone Line Cable for FAX port (Type BM1 only)

In these sheets, we sometimes use the terms "RC Gate" as an abbreviation of Remote Communication Gate.

5 Changing the IP Address (LAN2 Port)

The IP address of LAN2 port is set at 192.168.0.2, and the Subnet mask is set at 255.255.0 as the factory default. If you cannot use 192.168.0.2 as the IP address of this equipment, use LAN1 port to change the IP address of LAN2 port.

When you can use 192.168.0.2 as the IP address of this equipment, please skip this procedure.

When you use an optional Wireless LAN, Wireless LAN setting is necessary according to the procedures below.

When setting of the procedures is necessary:

- The Subnet in use is other than 192.168.0.xxx.
- When the Subnet is 192.168.0.xxx, but 192.168.0.2 is already in use, and the address cannot be used for this equipment.
- When Subnet is 192.168.0.xxx, but IP address is given dynamically by the DHCP server.
- When the optional Wireless LAN is used for this equipment.

Preparation

Log on to the computer as a member of the Administrators group, if you use Windows 2000/XP, Windows Server 2003, or Windows NT 4.0 for setting.

Important

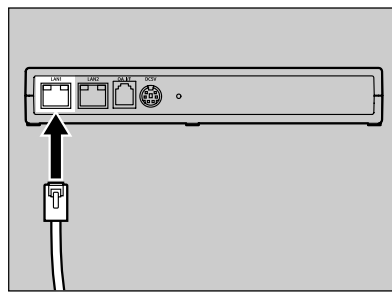
- Connect the equipment and the network by the supplied network interface cable. You can use 10BASE-T or category 5 100BASE-TX network cable instead of the supplied network cable.
- In the following cases, connect this equipment and the PC directly by a cross network cable available on the market, and follow the procedures of Step 3 and after:
 - The Subnet use is 192.168.10.xxx, and 192.168.10.1 cannot be set because it is already used.
 - There is an environment only for the wireless LAN available, and not for the wired LAN.
 - All the port for the network devices such as HUB are occupied.
 - The segment of this equipment and the PC to set this equipment is different.
- In case you cannot change the IP address even if you follow the procedures in this manual, please contact and ask your service representative.

The flow below shows the way to setup the equipment from the LAN2 port by accessing from the PC on the network. The PC must have web browsers confirmed at Step 1 of "8. Registering the RC Gate to the Communication Server."

Note

- In this document, we show the description and screen illustration, using DOS/V equipment, Windows 2000 and Internet Explorer 6.0. Procedures may be different depending on your hardware/software environment.

1 Connect the supplied Network Cable to the LAN1 port.



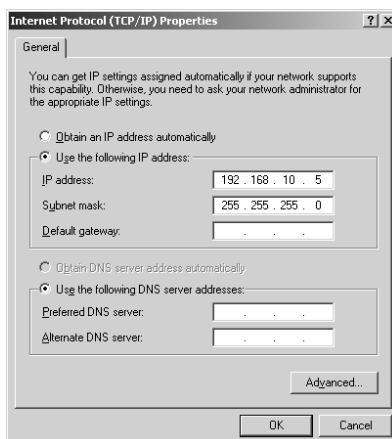
2 Connect the other end of the network cable to the network hub or other network devices.

3 Write down current network setting information of the PC, such as the IP address, etc.

Note

- Next procedure temporarily changes the IP address of the PC. Write down the PC network setting information so as to be able to restore the setting after the operation is completed.
- You can make an additional setting of the IP address for Windows 2000/XP. In this case, no operation is necessary.

4 Set the IP address of the PC at 192.168.10.x (x can be any number between 2 and 254), and Subnet mask at 255.255.255.0.



Note

- The screen varies by OS used.
- To set an additional IP address on the Windows 2000, click [Detail Setting] and then [Add].
- To set an additional IP address on the Windows XP, click [Alternative Configuration] tab.

5 Follow the instructions on the screen.

IP address of the PC will be set at 192.168.10.x.

6 Open your web browser of the PC.

7 Input "https://192.168.10.1/index.html" in the address box of the web Browser.

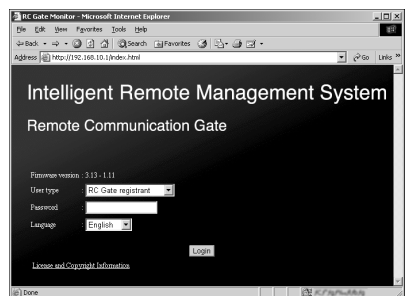
The SSL certification warning screen appears.

Note

- The SSL certification warning screen differs according to the web browser.

8 Confirm the issuer is a "Ricoh Remote Service CA", and then agree to the conditions.

The login page of the RC Gate Monitor appears.



Note

- RC Gate Monitor is a software to confirm setup information of this equipment and its registered devices. The software is pre-installed in the equipment, and therefore, it is not necessary to install it to your PC. To start RC Gate Monitor, access https://IP address of the LAN port 1 or 2/index.html with the web browser.
- The LAN1 port's default IP address is "192.168.10.1".

9 Check [Language] indicates the required language. Check [User type] indicates "RC Gate registrant". Enter the registrant's password in [Password], and then click the [Login] button.

Note

- For details about the default password, see "Login User Type to RC Gate Monitor".
- Enter only single byte characters (for all inputting).
- If you enter the password incorrectly, the login screen reappears. When this happens, check [User type] indicates "RC Gate registrant", and then enter the correct password.

Important

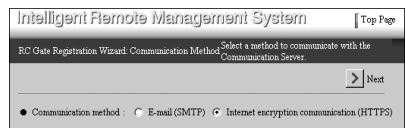
- Do not use the default password. Be sure to select a unique password and take care to remember it.

Top Page for RC Gate registrant appears.



10 Click [RC Gate Registration Wizard].

[RC Gate Registration Wizard: Communication Method] page appears.



11 Select either [E-mail (SMTP)] or [Internet encryption communication (HTTPS)], and click [Next].

Note

- Select the communication method of your contract.

[RC Gate Registration Wizard: RC Gate Information] page appears.

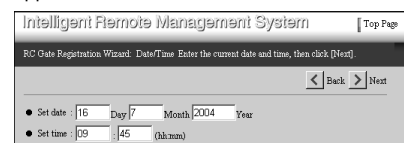


12 Input the number in the [Request No.]. Select the time zone from [Time Zone], and click [Next].

Note

- This [Request No.] is a must item to be used for confirmation and approval of the RC Gate at the Communication Server.

[RC Gate Registration Wizard: Date/Time] page appears.



13 Enter the date and time. Then, click [Next].

Important

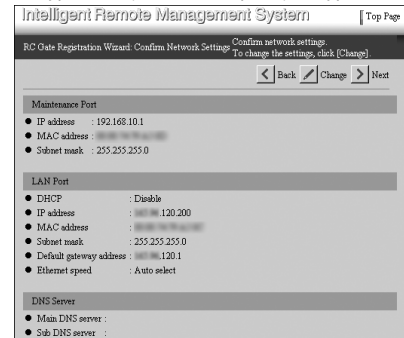
- Check the date and time periodically, and correct them if necessary.

Note

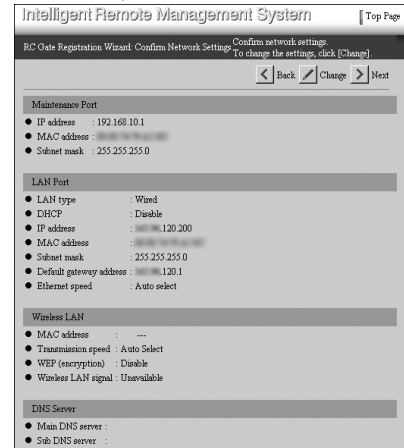
- Entered time will be applied after you press [Next].

[RC Gate Registration Wizard: Confirm Network Settings] page appears.

- Type BN1 (without an option) or Type BM1



- With an optional wireless LAN card



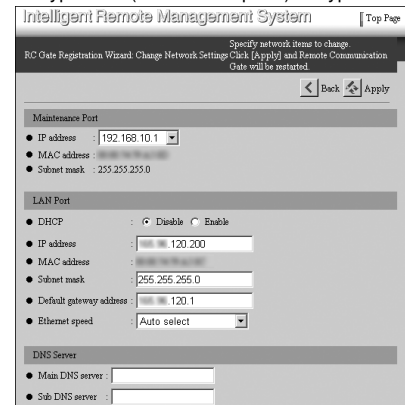
14 Click [Change].

Note

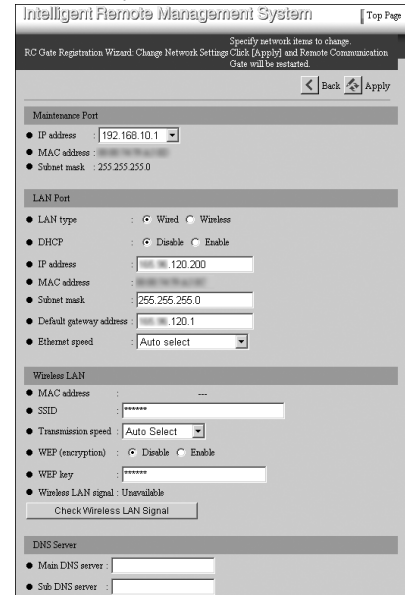
- To return to [RC Gate Registration Wizard: Date/Time] page, click [Back].
- Do not click [Next] on this page. If this button is clicked, [RC Gate Registration Wizard: E-mail Settings] page appears and you cannot set the IP address.

[RC Gate Registration Wizard: Change Network Settings] page appears.

- Type BN1 (without an option) or Type BM1



- With an optional wireless LAN card



15 Enter the necessary settings.

Note

- When using DHCP, select "Enable" in [DHCP], and do not input anything in [IP address], [Subnet mask] and [Default gateway address]. These values are automatically given from the DHCP Server. Make the same settings when you give static IP address by the DHCP Server.
- When DHCP is "Disable," input appropriate numbers in the way, xxx.xxx.xxx.xxx (xxx represents 0 to 255), in [IP address], [Subnet mask] and [Default gateway address].
- If you have installed an optional Wireless LAN card, select "Wired" or "Wireless" from [LAN type]. If you select "Wireless", enter all items from [SSID] to [WEP Key].

16 Click [Apply].

Note

- If you click [Back], [RC Gate Registration Wizard: Confirm Network Settings] page appears, retaining the settings input so far.
- Confirmation dialogue box to reboot this equipment appears.

17 Click [OK].

The equipment will be rebooted.

Note

- It will take a few minutes to reboot the equipment. It will take longer time depending on the network environment.

18 Click [Top Page] on the upper right of this page.

Login screen appears.

19 Click [Close] in [File] menu of the web browser.

The web browser closes.

20 Restore the network settings of your PC according to the written-down setting information in Step 3 of this section.

Important

- If you change the equipment's IP address, this step is essential for re-establishing connection with the equipment.

21 Disconnect the network cable from the LAN1 port of this equipment.

When using the equipment in a DHCP environment

Obtain an IP address from the DHCP server by connecting to the network via the LAN2 port after step 18.

When the equipment has rebooted, follow steps 8 to 12 with the computer connected to the LAN1 port. Make a note of the IP address when you receive it from the DHCP server (step 13). In step 13, click [Top Page], and then proceed from step 20.

Note

- The LED indicates the equipment's status during reboot. For details, see "Guide to the Equipment" in the APPENDIX.

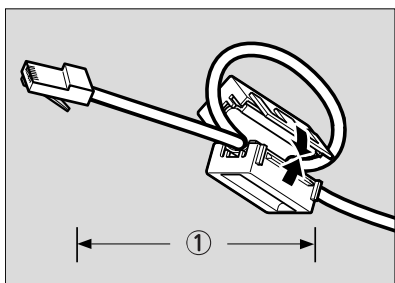
6 Connecting the Network Cable



Important

- Connect the equipment and the network by the supplied Network Interface Cable. You can use 10BASE-T or category 5 100BASE-TX network cable instead of the supplied network cable.
- IP address of the LAN2 port is set at 192.168.0.2, and the Subnet mask is set at 255.255.255.0 as the factory default. If you cannot use 192.168.0.2 as the IP address of this equipment, change the IP address of the LAN2 port and then connect to your network. For details, please refer to "5. Changing the IP Address (LAN2 Port)."

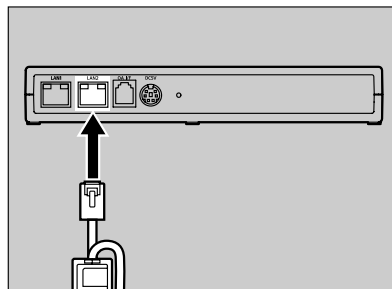
- 1 Twist the cable in loop and fix the supplied core at about 10cm (4", ①) from the end of the cable.



Note

- The ferrite core will be clipped when supplied. Open the core before clipping it to the network cable.

- 2 Connect the supplied Network Interface Cable to the LAN2 port of this equipment.



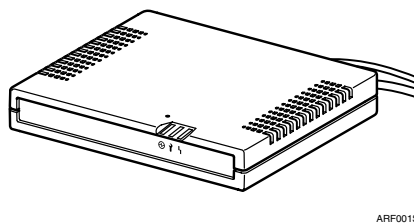
- 3 Connect the other end of the cable to the network devices, such as HUB, etc.

7 Installing the RC Gate

Make sure the environment where you want to install the equipment meets the conditions listed on "1. Checking the Setup Environment and Power Connection", and then begin the installation procedure.

Setting the Equipment Horizontally

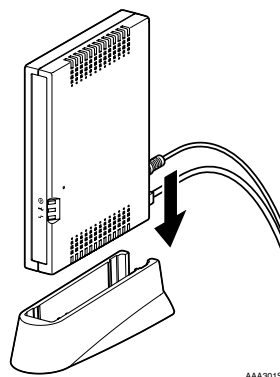
Lay the equipment on a flat surface, its LEDs upward.



Standing the Equipment

You can set the equipment vertically to minimize its footprint.

- 1 Lift the equipment, tilt vertically (LAN1 port downward) and then slot it fully into the supplied stand, as shown.



8 Registering the RC Gate to the Communication Server

- 1 Check the OS and web browser of the computer.

Applicable OS

- The operating system supports the recommended web browser below.

Web Browsers Recommended

- Netscape Navigator 7.1 or higher
- Microsoft Internet Explorer 6.0 or higher



Important

- Use a browser that can display disguised characters (such as asterisks) during password entry.

Limitation

- Some failure in operation or in displaying might occur when you use web browsers lower than the recommended version.
- Some failure in operation or in displaying might occur when "Java Script" is not set valid for the browser.
- Some failure in operation might occur when "Usage approval of Cookie" is not set valid for the browser.
- Some failure in operation or in displaying might occur when you set to show cache in the web browser.
- Page layout may be out of shape depending on the font size settings. We recommend to set it to "Medium" or smaller.
- If you select the language that the web browser does not support, the letters in the browser garbles.

- 2 Start the web browser of the computer.

- 3 Input "https://IP address of the LAN2 port/index.html" into [address] box.

The SSL certification warning screen appears.

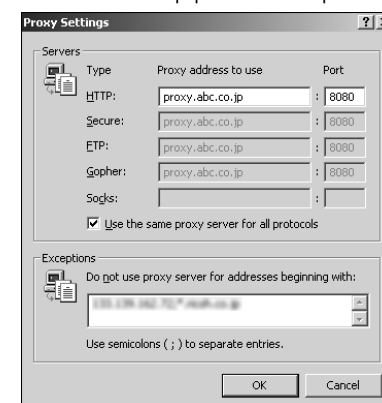


Note

- The SSL certification warning screen differs according to the web browser.

Proxy Settings (for Internet Explorer 6.0)

- 1 On your Web browser's [Tools] menu, select [Internet Options].
The [Internet Options] screen appears.
- 2 Click the [Connections] tab.
- 3 Click the [LAN Settings] button.
- 4 Click the [Advanced] button.
- 5 Under [Exceptions], after [Do not use proxy server for addresses beginning with], enter the IP address of the equipment's LAN2 port.

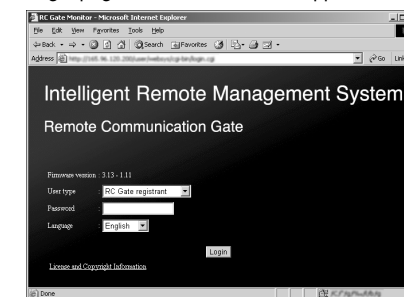


- 6 Click the [OK] button three times.

- 7 The setting is activated.

- 4 Accept the certificate.

Login page of RC Gate Monitor appears.

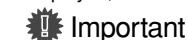


- 5 Select "RC Gate registrant" in [User type], and enter the password in [Password]. Select your language in [Language], and then click [Login].



Note

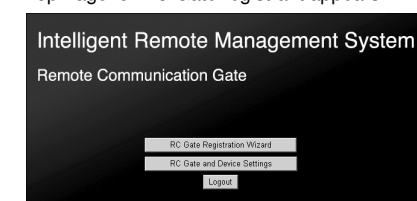
- If invalid password is entered, the login page will appear again. Click [User type] and confirm the "RC Gate registrant" correctly displayed, and then enter correct password.



Important

- For security, further login attempts are rejected if you fail to log in three times within five minutes. Wait one minute before attempting to login again.

Top Page for RC Gate registrant appears.



- 6 Click [RC Gate Registration Wizard]. Follow the wizard and register your equipment to the Communication Server.

Top Page appears when the registration is completed.

For details of the RC Gate Monitor

Please see "Operating Instructions" for details about [RC Gate Registration Wizard] and other wizards. Download "Operating Instructions" (PDF file) from following URL. Adobe Acrobat Reader/Adobe Reader is needed to open the PDF file.

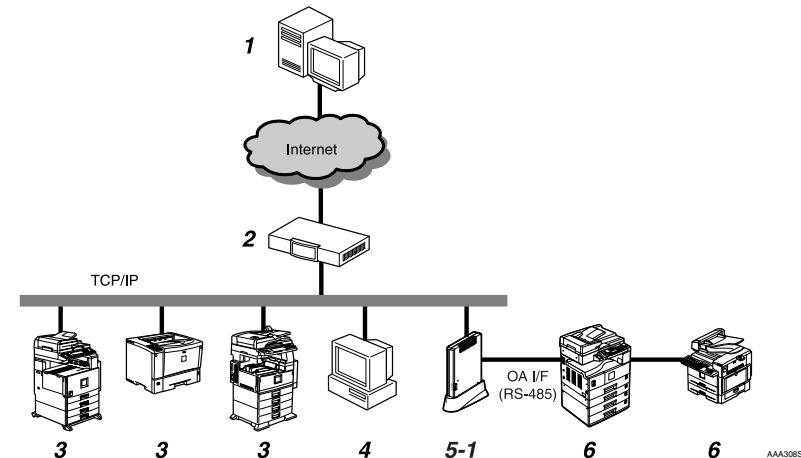
<http://www.atremote.com/remote/>

APPENDIX

Outline of the System

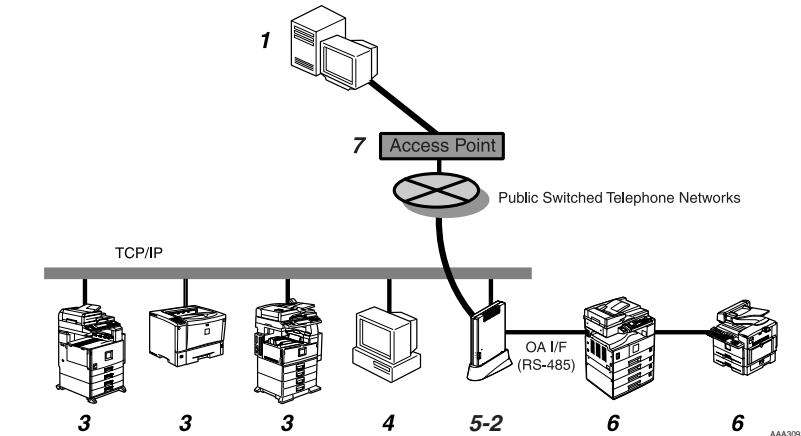
Always Connected

When your network is connected to the Internet, the equipment uses your network to send and receive data from the Communication Server. Here, we call this environment "Always connected."



Dial-up

If your network environment cannot access the Internet, the equipment can communicate with the Communication Server using a modem installed in Type BM1. Here, this is called "Dial-up." For the Dial-up, you can use your facsimile line or telephone line exclusively prepared for this equipment.



1. Communication Server

Information for various services will be sent here from the equipment.

2. Proxy Server and Firewall

Your security system for the network environment can be used.

3. Image I/O Devices Managed on the Network

This equipment can manage multi-function digital devices and printers. Please contact and ask your service representative regarding the devices applicable for this equipment, for there are some devices that cannot be used via network.

4. PC for Administration

Administering the equipment via RC Gate Monitor.

5-1. This Equipment (Remote Communication Gate Type BN1)

Various pieces of information of the devices (image I/O devices) managed by this equipment are sent to the Communication Server. There are 2 communication methods: 1) HTTPS method which exchanges messages between the Communication Server as the HTTPS server and this equipment as the HTTPS client, and 2) SMTP method which sends messages from this equipment to the Communication Server via SMTP server.

5-2. This Equipment (Remote Communication Gate Type BM1)

Various pieces of information of the devices (image I/O devices) managed by this equipment are sent to the Communication Server. Communications with the Communication Server will be made via the modem installed in this equipment.

6. The Image I/O Devices not Connected to the Network

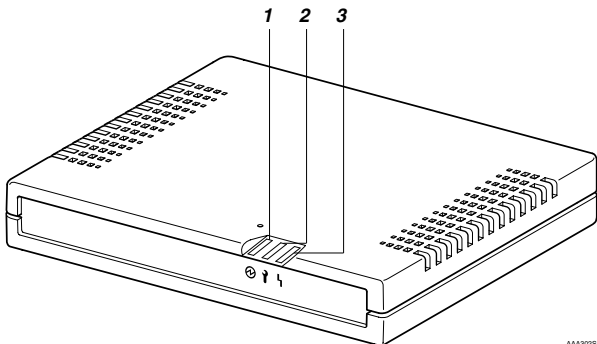
Digital multiple function devices and Copier which are not connected to the network can also be managed, by directly connecting them to this equipment with the supplied modular cable (black). A maximum of 5 devices can be connected. There are some devices that cannot be connected by the modular cable. Regarding the connection of such devices, please ask your service representative. Your service representative will connect these devices.

7. Access Point

You can make the setting by selecting a country name from among [Access point] list in [RC Gate Registration Wizard].

Guide to the Equipment

Top/Front



1. Power

Lights green while the equipment is operating.

2. Call Maintenance

OFF when correctly started. Lights red when an error occurs. In this case, contact your service representative.

3. Communication Error

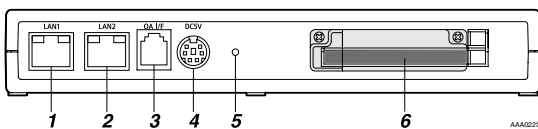
OFF when correctly communicated with the Communication Server. Lights orange when the access to the Communication Server fails. Check the LAN cable is correctly connected. Connect the power cable if it not connected. Contact your service representative if the problem persists.

Note

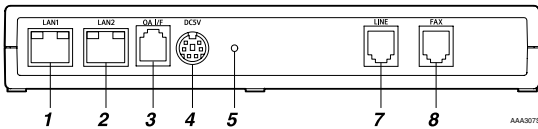
- When re-booted and started, the LED blinks for a while.
- If the equipment stops functioning due to error, the red and orange LEDs flash rapidly and alternately. Call your service representative if this happens.

Back

Remote Communication Gate Type BN1



Remote Communication Gate Type BM1



1. LAN1 Port

Network (Ethernet) interface port for maintenance. The IP address of the port is set at 192.168.10.1 as the factory default, but you can change the address at 192.168.1.1 or 192.168.250.1. This is used by the service engineer for the maintenance of this equipment, and also used for the first LAN2 port IP address setting by the administrator.

2. LAN2 Port

Network interface port to connect this equipment to the network. The default IP address is 192.168.0.2, but it is exchangeable.

3. OA I/F

A port for connecting the image I/O devices that have no NIC (Network Interface Card). The modular cable (black) is used for the connection. Contact your service representative for the connection service.

4. Power Socket

Connect the power cable.

5. Screw Hole

A hole for the screw to set the bracket.

6. A port for Wireless LAN Card (Option)

An optional LAN Card interface for the network connection of this equipment.

7. LINE

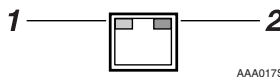
Interface port to connect the telephone line.

8. FAX

Interface port to connect the FAX line when using the same line with your FAX.

LAN Port Indicator

You can check the connection condition of LAN1 port and LAN2 port.



1. Orange

Lights on when connected to the 100Mbps network. Lights off when connected to the 10Mbps network or not connected to the network.

2. Green

Lights on while transmitting data.

Login User Type to RC Gate Monitor

On the login page, you can select either "RC Gate registrant" or "RC Gate administrator." Top Page (menu screen) will be different depending according to the user type selected and communication method.

RC Gate registrant

An user to set up the equipment. If you login as the RC Gate registrant, the Top Page with [RC Gate Registration Wizard] and [RC Gate and Device Settings] appears. After the RC Gate Registration Wizard is finished, the Top Page changes according to the communication method. [Auto Discovery Setting Wizard] will appear when using E-mail (SMTP) method. When in Internet encryption communication (HTTPS) method, [RC Gate Registration Wizard] disappears, and [Auto Discovery Setting Wizard] and [Device Registration Wizard] appears.

The default password is "installation".

RC Gate administrator

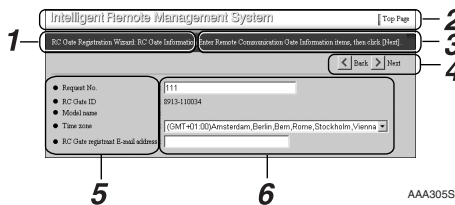
A user who manages this equipment. The user can change and check the settings and information on the devices. When you login as the RC Gate administrator, the Top Page with [RC Gate and Device Settings] appears.

The default password is "admin."

Important

- Never use the default password that has been set during shipment. Change it by considering the followings. Specify a new password using 8 to 13 alphanumeric and symbolic characters.
- You can use the following single-byte characters: space ! " # \$ % & ' () * + , - . / 0 1 2 3 4 5 6 7 8 9 : ; < = > ? @ A B C D E F G H I J K L M N O P Q R S T U V W X Y Z [\] ^ _ a b c d e f g h i j k l m n o p q r s t u v w x y z
- Change the password regularly. We recommend you change it at least every six months.
- Avoid using well known words or phrases, or repeated characters that can easily be guessed.
- Do not leave passwords written where they can be seen.

RC Gate Monitor Wizard Screen and Operation



1. Page Title

Name of the current page is shown.

2. Header Area

A link button with the Top Page is here on every page. You can return to the Top Page by clicking this button.

Note

To quit the wizard, click [Top Page].

3. Guidance

Guide for the current operation is shown.

4. Command Buttons

Click to show the next/previous page, and to update values.

5. Name of the menu items

Name of the setting/checking items is shown here.

6. Contents of the items

Contents of the items are shown. You can enter the white 3-D effect item box.