

Start Guide

RICOH PJ X3351N/WX3351N/X4241N/WX4241N

RICOH



For safe and correct use, be sure to read the Safety Information in "Read This First" before using the machine. Some illustrations in this manual might be slightly different from the machine.

1 Checking the Accessories

If anything is missing or damaged, contact your sales representative or service representative.

- ☒ **Start Guide** (this sheet)
- ☐ **Read This First**
- ☐ **Remote control**
- ☐ **AAA battery LR03**
- ☐ **CD-ROM**
- ☐ **RGB cable**
- ☐ **Power cord**
- ☐ **Warranty card**
- ☐ **Carrying bag**
(RICOH PJ X3351N/WX3351N/
WX4241N only)

❖ Manuals for the Projector

- **Read This First**
- **Start Guide**
- **Operating Instructions**

The CD-ROM includes only the English manual. For other languages, download the latest version from the website.

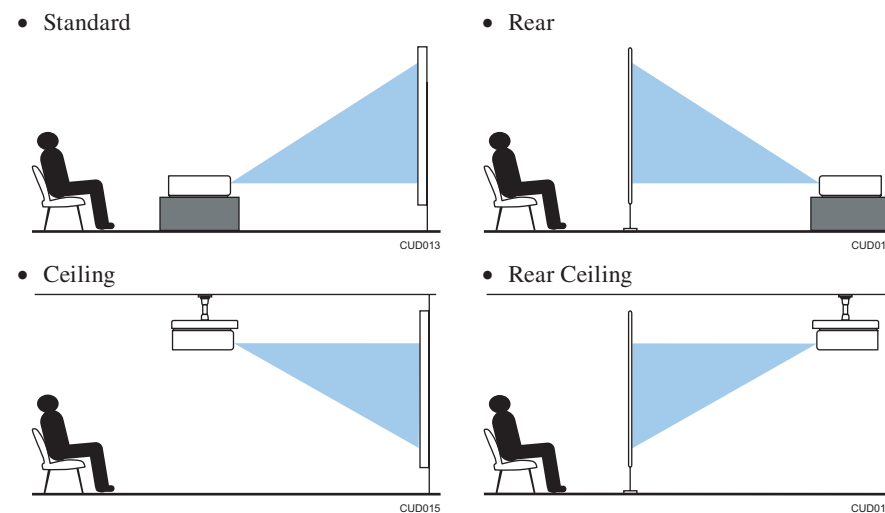
❖ Viewing the PDF Manual on the CD-ROM

- 1** Insert the CD-ROM in the CD-ROM drive of your computer.
- 2** Specify a language and model name, and then click [Select].
- 3** Click the appropriate manual you want to refer to.

- Actual flow may vary according to the operating system used. Follow the on-screen instructions to view the PDF manual on the CD-ROM.

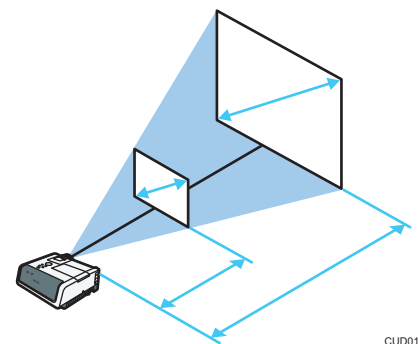
2 Positioning the Projector

When positioning the projector, make sure the projector and the screen are parallel to each other.
Four projection modes are available for the projector.



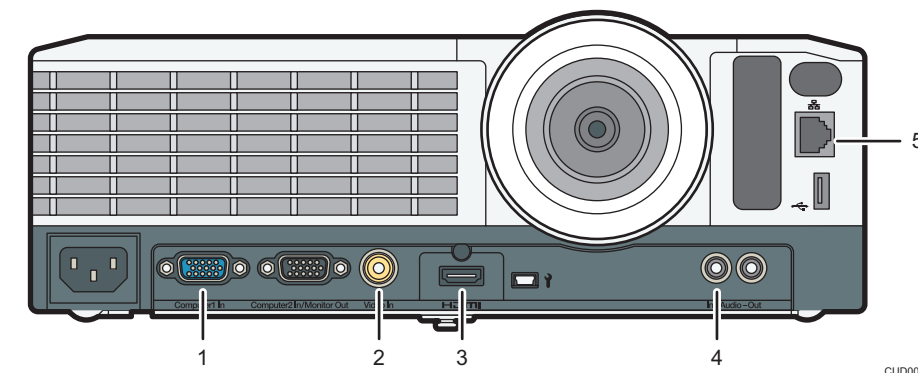
❖ Relationship Between the Projection Distance and the Screen Size

The size of the projected image varies according to the distance from the projector to the screen. Refer to the following for the minimum screen size (the shortest projection distance) and the maximum screen size (the longest projection distance).



Projector name	Projection screen size	Projection distance
RICOH PJ X3351N	30 to 200 inches	0.68 to 7.20 m (2.22 to 23.61 feet)
RICOH PJ WX3351N	40 to 240 inches	0.77 to 7.33 m (2.53 to 24.06 feet)
RICOH PJ X4241N	50 to 120 inches	0.59 to 1.49 m (1.94 to 4.88 feet)
RICOH PJ WX4241N	60 to 140 inches	0.61 to 1.48 m (2.00 to 4.85 feet)

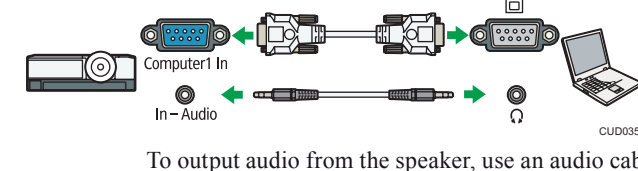
3 Connecting Equipment to the Projector



1. Computer1 In port (Y/Pb/Pr)
2. Video In port
3. HDMI port
4. Audio In port
5. LAN port

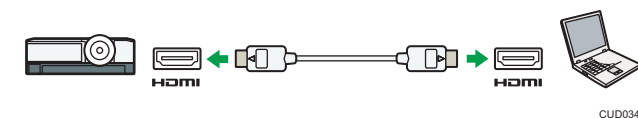
❖ Connecting a Computer

- **Using an RGB cable**



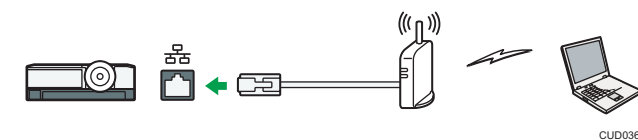
To output audio from the speaker, use an audio cable.

- **Using an HDMI cable**



- **Using an Ethernet cable**

To use the projector via a network, you must specify settings such as the IP address. For details, see "Using the Projector via a Network", Operating Instructions.



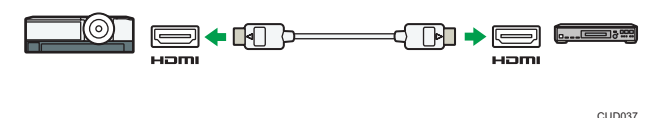
- **Using a wireless LAN**

The RICOH PJ X3351N/WX3351N/WX4241N support the wireless connectivity function. For details, see "Using the Projector via a Network", Operating Instructions.

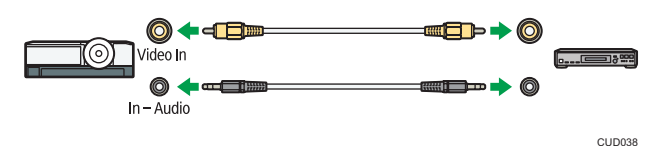


❖ Connecting AV Equipment

- **Using an HDMI cable**

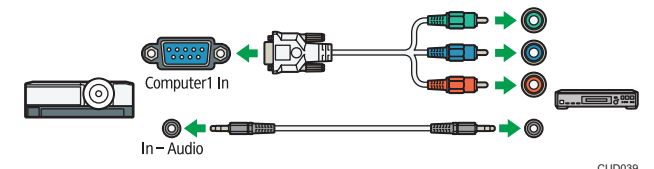


- **Using a video cable**



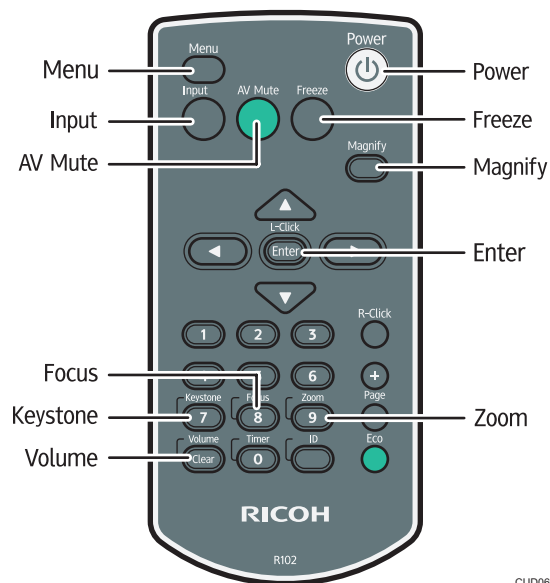
To output audio from the speaker, use an audio cable.

- **Using a D-sub to component video cable**



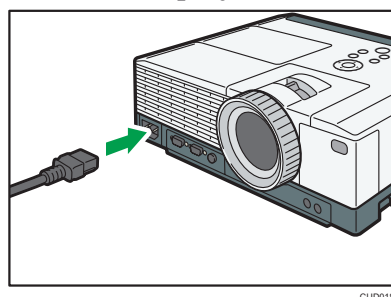
To output audio from the speaker, use an audio cable.

The procedures explained in this manual are for how to use the projector with a remote control.



4 Projecting an Image

- 1 Insert the connector of the power cord set into the AC In socket on the projector.



- 2 Insert the power plug into a power outlet.

The projector turns on in this step if [Direct Power On] in [Default Settings 2] on the menu screen is set to [On]. Proceed to step 4.

- 3 Press the (Power) button.

Select the display language on the start menu the first time you turn on the projector after you purchase it.

The [Network Setting Wizard] screen appears after selecting the display language. To configure the network settings, see "Connecting the Projector to a Network", Operating Instructions

- 4 Turn on the equipment that is connected to the projector.

The input signal is detected automatically and the image is projected. To project the image of a video player, press the play button on the video player. To project a laptop computer's screen, switch the computer's image output. If the projected image is not the one that you wanted to project, press the [Input] button to switch the input signal.

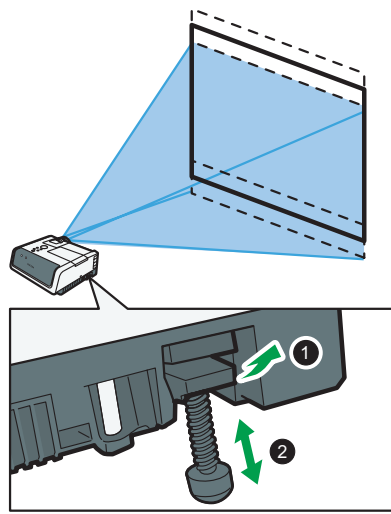
Note

- To change the display language, press the [Menu] button, and then select the display language in [Language / XXX] (XXX indicates the current display language) on the [] tab.
- When connecting a laptop computer to the projector, switch the computer's image output. In Windows operating systems, the image output can be switched with a function key. While pressing and holding the [Fn] key, press the key, the key, or the LCD/VGA function key.

Computer brand	Key combination
MSI	[Fn] + [F2]
Everex, MITSUBISHI, NEC, Panasonic, SOTEC	[Fn] + [F3]
Gateway, HP	[Fn] + [F4]
acer, SHARP, SOTEC, TOSHIBA	[Fn] + [F5]
HITACHI, IBM, lenovo, SONY	[Fn] + [F7]
Asus, DELL, EPSON, HITACHI	[Fn] + [F8]
FUJITSU	[Fn] + [F10]

5 Adjusting the Projected Image

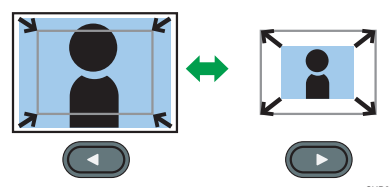
Adjusting the Angle of the Projection



Reducing the Size of the Projected Image

The image can be reduced by 80 to 100% using the digital zoom function.

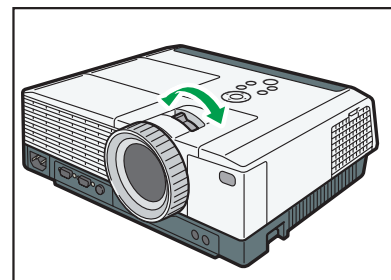
- 1 Press the (Zoom) button.
- 2 Adjust the size of the projected image.



Enlarging the Size of the Projected Image

The image can be enlarged by 100 to 150% using the optical zoom function.

- 1 Move the zoom lever to adjust the size of the projected image.



Note

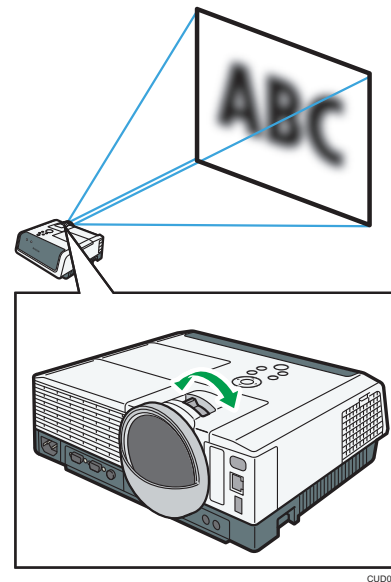
- The RICOH PJ X4241N/WX4241N do not support the optical zoom function.

Adjusting the Focus

- RICOH PJ X3351N/WX3351N

The focus is automatically adjusted by the automatic focus function. To adjust the focus manually, press the [Focus] button, and then press the or button.

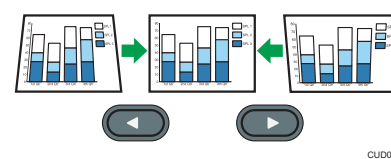
- RICOH PJ X4241N/WX4241N



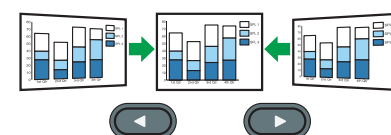
Adjusting for Keystone Distortion

- 1 Press the (Keystone) button.
- 2 Press the and buttons to switch between vertical and horizontal adjustment.

- When [Keystone (Vertical)] is selected



- When [Keystone (Horizontal)] is selected



6 Adjustments while Projecting Images

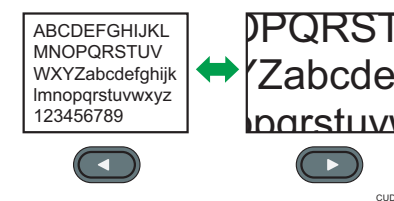
Adjusting the Volume of the Speaker

- 1 Press the (Volume) button.
- 2 Adjust the volume.



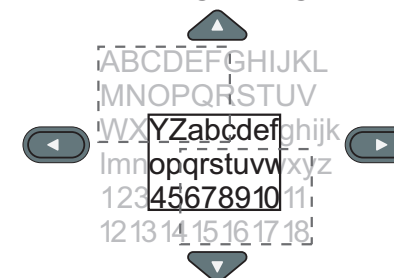
Enlarging the Image

- 1 Press the (Magnify) button.
- 2 Adjust the magnification ratio.



- 3 Press the [Enter] button.

- 4 Move the display position of the enlarged image.



To change the magnification ratio, press the [Enter] button, and then repeat step 2.

- 5 To cancel this function, press the [Magnify] button again.

Temporarily Blanking the Image and Muting the Audio

- 1 Press the (AV Mute) button.

The image blanks and the audio mutes.

- 2 To cancel this function, press the [AV Mute] button again.

Freezing the Image

- 1 Press the (Freeze) button. The image freezes.
- 2 To unfreeze the image, press the [Freeze] button again.

7 Turning Off the Projector

- 1 Press the (Power) button.

The confirm screen appears.

- 2 Press the [Power] button again.

The projector beeps and the projector turns off.