

This training course provides service technician training for the Meissa-PJ1 series.

It assumes that you already know the Antares-PJ1. If this is not true, please study the course for the Antares-PJ1 before you start the course for the Meissa-PJ1.

To learn about this machine, please study the user's guide and the field service manual in addition to this TTP.



No additional notes



What Models are there in the Series?

- SVGA models (800 x 600)
 - Meissa-PJ1 CS 1 (Y0AE): PJ S2340
- XGA models (1024 x 768)
 - Meissa-PJ1 CX 1 (Y0AD): PJ X2340
- These are compact entry-level models with standard features.
- The models in this series cannot be used as network projectors.
 - These models do not work with 'Network Utility', 'Projector Management Utility', or @Remote.

No additional notes

■ Main Specifications

RICOH
imagine. change.

- Power Consumption: 225W (ECO mode), 280W (Full mode)
- Weight: 5.5 lbs (2.5 Kg)
- Projection System: Single DLP® 0.55" chip
- Resolution: See the previous slide
- Lens: F# 2.41 ~ 2.55, f=21.79 ~ 23.99 mm, 1.1X Zoom Lens
- Lamp: High-pressure mercury lamp (200W)
- Lamp Life: 4500 hours typical (Full Mode), 6000 hours typical (ECO Mode)
- Projection screen size: 30 ~ 300 inch
- Projection distance: 1.2 ~ 13.1m (Focus range)
- Speaker: 2W (Mono)

4

No additional notes

Features

- This product can be installed by users, except when mounted on a ceiling.
- This product is designed for user maintenance. Regular on-site maintenance is not needed.
- There is no display panel, but LEDs show the symptoms for troubleshooting (blinking/lit, number of times the LEDs blink, etc).
- A service mode is available.

No additional notes

- PJ Replacement Lamp Type 26 (Y234)
 - 200W mercury lamp
 - Life: 4500 hours (normal mode), 6000 hours (Eco mode)
 - There may be a 50% decrease in brightness at the end of the lamp's life.

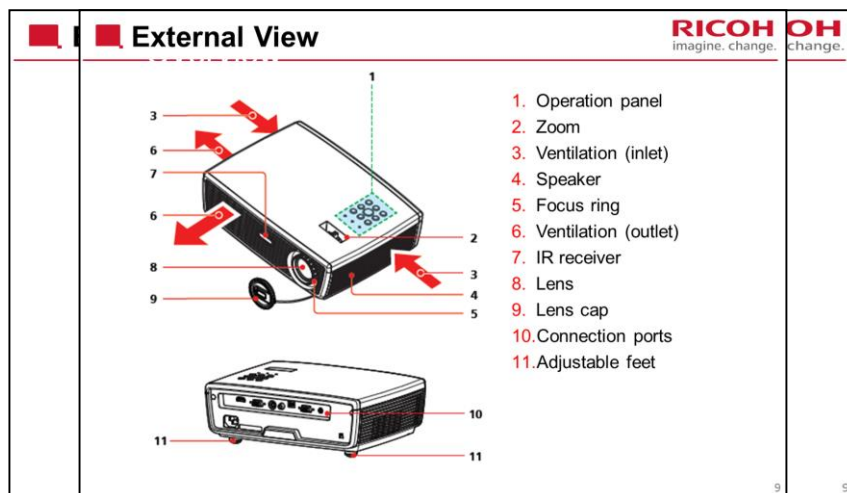
No additional notes

- There is no near-end alert.
 - The lamp end alert occurs when the machine calculates that the life time has expired.
 - If used in Normal Mode only, the alert appears after 4,500 hrs projection time
 - If used in Eco Mode only, the alert appears after 6,000 hrs projection time
 - If the user switches between modes, the machine calculates when to display the alert based on how long the lamp was used in each mode.

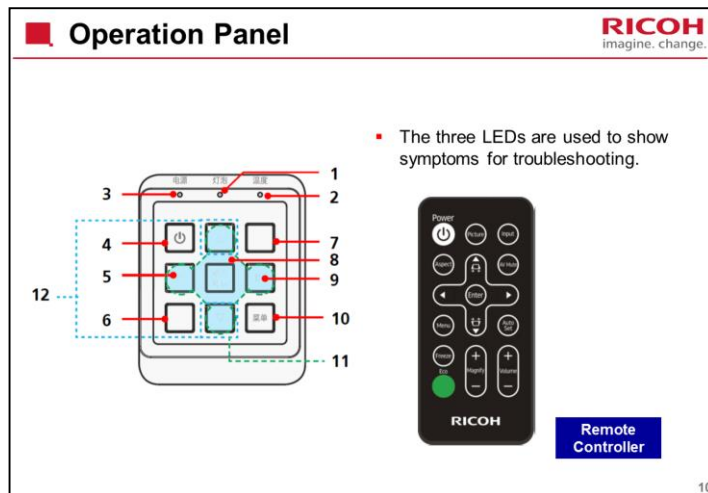
No additional notes

- Projector lamps normally contain mercury vapour.
- These lamps can rupture due to impact or being used longer than their life expectancy.
 - The time that the breakage will occur differs widely for each lamp and its circumstances of use.
- These lamps must be disposed of in accordance with local environmental regulations.

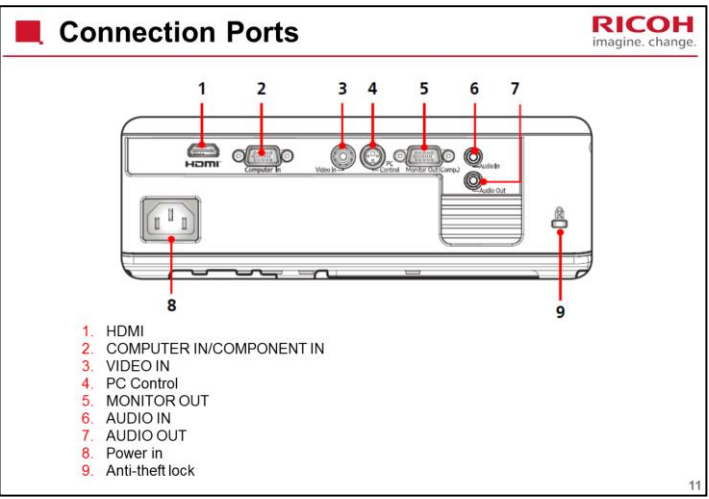
No additional notes





No additional notes



- 1 Lamp indicator
- 2 Temp indicator
- 3 Power indicator
- 4 Power
- 5 Volume
- 6 Input selector
- 7 Menu
- 8 Enter
- 9 Volume +
- 10 AV Mute
- 11 Four Selector Keys
- 12 Keystone



No additional notes


imagine. change.

Basic Points about Service

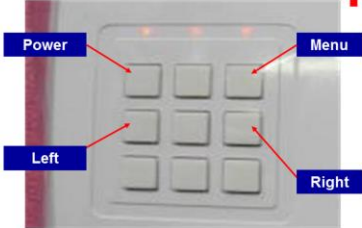
12

No additional notes

■

Entering Service Mode

RICOH
imagine. change.



■ Press "Power", "Left", "Right" and "Menu" sequentially to get into service mode.

– Note: You can use the remote controller for this.

13

This is slightly different from the Antares-PJ1.

LED Display



- The status of the three LEDs on the front panel indicate the machine's condition.
 - See the table 'LED Display' in the Troubleshooting section of the service manual.

No additional notes

- After replacing parts, some adjustments may be needed. See the table below.

– Whenever you replace a component, check this table to see if you have to do any of these procedures. The text in the Replacement and Adjustments procedures does not always refer to this table.

Update	Change parts				
	Main board	Lamp module	Optical Engine	Lamp driver	Blower
ADC calibration	V				
Reset lamp hours		V			
OSD reset	V				
Rod adjustment			V		
Waveform download				V	
FAN RPM calibration	V				V

15

OSD: On Screen Display

Differences from Antares:

The following adjustments are removed: Color wheel index, rewrite lamp hours

■ Replacing the Main Board

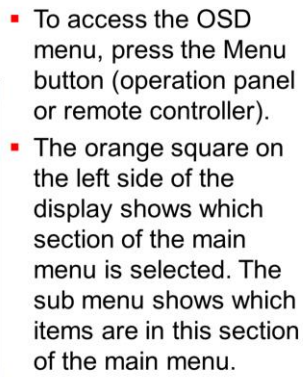
RICOH
imagine. change.

- There is no 'Rewrite Lamp Hours' function.
- So, if you replace the main board, keep a note of the lamp hours first, so that you have a record of lamp usage in order to replace the lamp at the correct time.

16

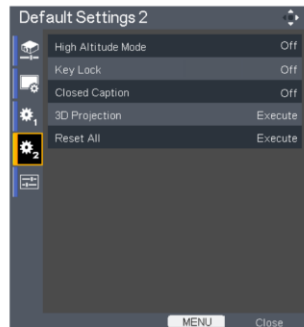
No additional notes

RICOH
imagine. change.



This is not explained in the service manual, so we explain it here.

OSD Reset (2)



- In the main menu, select Default Settings 2.
- Then select Reset All and Execute.
- This returns all adjustments and settings to the factory settings.

No additional notes



The End