

**Reissued: 15-Jun-15**

Model: <b>Mimosa-PJ1 cs</b>	Date: 03-Jun-15	No.: RY080001a
-----------------------------	-----------------	----------------

**RTB Reissue**

The items in ***bold italics*** have been corrected or added.

Subject: Firmware Release Note: Main		Prepared by: S. Ishizu	
From: VC Products Support Sect, Solution Support Dept.			
Classification:	<input type="checkbox"/> Troubleshooting <input type="checkbox"/> Mechanical <input type="checkbox"/> Paper path <input type="checkbox"/> Product Safety	<input type="checkbox"/> Part information <input type="checkbox"/> Electrical <input type="checkbox"/> Transmit/receive <input checked="" type="checkbox"/> Other (Firmware)	<input type="checkbox"/> Action required <input type="checkbox"/> Service manual revision <input type="checkbox"/> Retrofit information <input checked="" type="checkbox"/> Tier 2

This RTB has been issued to announce the firmware release information for the **Main**.

Version	Program No.	Effective Date	Availability of RFU
<b><i>C02</i></b>	<b><i>Y0805510A</i></b>	<b><i>June 2015 production</i></b>	<b><i>Not available</i></b>
C01	Y0805510	Initial release	Not available

**Note: Definition of Availability of RFU via @Remote**
**"Available":** The firmware can be updated via RFU or SD card.

**"Not available":** The firmware can only be updated via SD card.

Version	Modified Points or Symptom Corrected
<b><i>C02</i></b>	<b><i>Error Correction:</i></b> <b><i>"Model name" in the OSD menu has been changed.</i></b>
C01	Initial release

**Reissued: 15-Jun-15**

Model: <b>Mimosa-PJ1 cx</b>	Date: 03-Jun-15	No.: RY084001a
-----------------------------	-----------------	----------------

**RTB Reissue**

The items in ***bold italics*** have been corrected or added.

Subject: Firmware Release Note: Main		Prepared by: S. Ishizu	
From: VC Products Support Sect, Solution Support Dept.			
Classification:	<input type="checkbox"/> Troubleshooting	<input type="checkbox"/> Part information	<input type="checkbox"/> Action required
	<input type="checkbox"/> Mechanical	<input type="checkbox"/> Electrical	<input type="checkbox"/> Service manual revision
	<input type="checkbox"/> Paper path	<input type="checkbox"/> Transmit/receive	<input type="checkbox"/> Retrofit information
	<input type="checkbox"/> Product Safety	<input checked="" type="checkbox"/> Other (Firmware)	<input checked="" type="checkbox"/> Tier 2

This RTB has been issued to announce the firmware release information for the **Main**.

Version	Program No.	Effective Date	Availability of RFU
<b><i>C02</i></b>	<b><i>Y0845510A</i></b>	<b><i>June 2015 production</i></b>	<b><i>Not available</i></b>
C01	Y0845510	Initial release	Not available

**Note: Definition of Availability of RFU via @Remote**
**"Available":** The firmware can be updated via RFU or SD card.

**"Not available":** The firmware can only be updated via SD card.

Version	Modified Points or Symptom Corrected
<b><i>C02</i></b>	<b><i>Error Correction:</i></b> <b><i>"Model name" in the OSD menu has been changed.</i></b>
C01	Initial release

**Reissued: 09-Mar-16**

Model: <b>Polaris-PJ1/Mizar-PJ1/Mimosa-PJ1/Hadar-PJ1</b>	Date: 17-May-12	No.: RY020002e
----------------------------------------------------------	-----------------	----------------

**RTB Reissue**

The items in ***bold italics*** have been corrected or added.

Subject: Firmware Release Note: FW Update		Prepared by: T. Takahashi	
From: VC Products Support Sect, Solution Support Dept.			
Classification:	<input type="checkbox"/> Troubleshooting <input type="checkbox"/> Mechanical <input type="checkbox"/> Paper path <input type="checkbox"/> Product Safety	<input type="checkbox"/> Part information <input type="checkbox"/> Electrical <input type="checkbox"/> Transmit/receive <input checked="" type="checkbox"/> Other (Firmware)	<input type="checkbox"/> Action required <input type="checkbox"/> Service manual revision <input type="checkbox"/> Retrofit information <input checked="" type="checkbox"/> Tier 2

This RTB has been issued to announce the firmware release information for the **FW Update**.

Version	Program No.	Effective Date	Availability of RFU
12.6	Y0185511B	August 2014 production	Not available
10.3	Y0185511A	November 2012 production	Not available
9.2	Y0185511	May 2012 production	Not available

**Note: Definition of Availability of RFU via @Remote**
**“Available”:** The firmware can be updated via RFU or SD card.

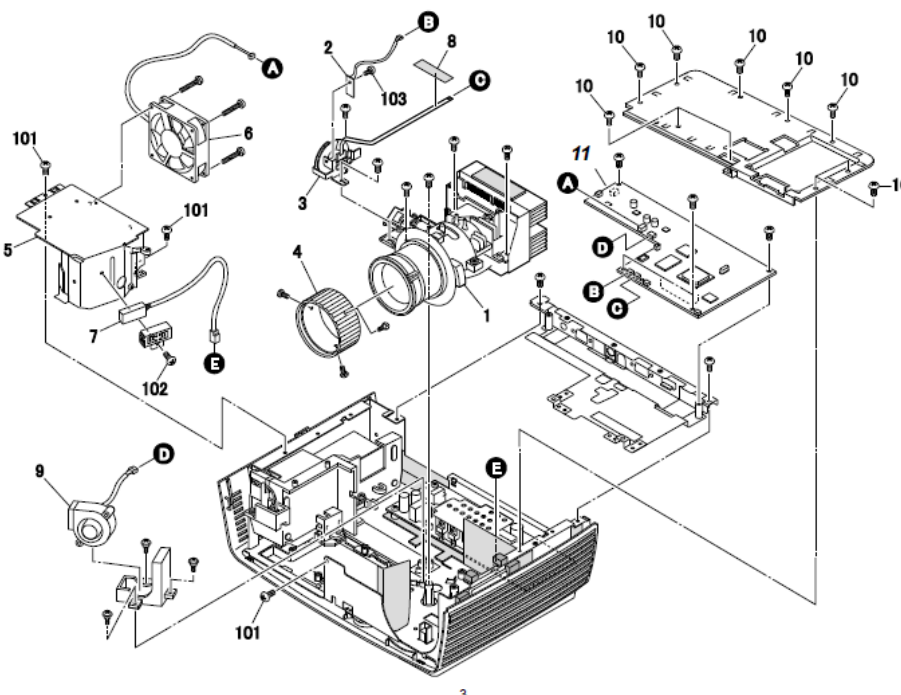
**“Not available”:** The firmware can only be updated via SD card.

Version	Modified Points or Symptom Corrected
12.6	Firmware modified to support the DDP 442X.  Additional Supported Model: Polaris-PJ1/Mizar-PJ1/Mimosa-PJ1/ <b><i>Hadar-PJ1 CWU, Hadar-PJ1 CX</i></b>  <b><i>Removed support for the following models:</i></b> <b><i>Antares-PJ1 cs/Antares-PJ1 cw/Antares-PJ1 cx/Rigel-PJ1 cwH/</i></b> <b><i>Rigel-PJ1 cwL/Rigel-PJ1 cxL</i></b>
10.3	NOTE: 1. There is no functional difference between this version (v10.3) and the previous version, v9.2. This version was released in accordance with the modification made to the DLP Composer (which is not released). 2. The FlashDeviceParameters.txt text file is provided as an attachment to this firmware release.
9.2	Initial release

Model: Mimosa-PJ1		Date: 20-Aug-15	No.: RY080002
Subject: PartsCatalog Correction		Prepared by: Shingo Ishizu	
From: VC Tech Support Section, Solution Support Dept.			
Classification:	<input type="checkbox"/> Troubleshooting	<input checked="" type="checkbox"/> Part information	<input type="checkbox"/> Action required
	<input type="checkbox"/> Mechanical	<input type="checkbox"/> Electrical	<input type="checkbox"/> Service manual revision
	<input type="checkbox"/> Paper path	<input type="checkbox"/> Transmit/receive	<input type="checkbox"/> Retrofit information
	<input type="checkbox"/> Product Safety	<input type="checkbox"/> Other (      )	<input type="checkbox"/> Tier 2

**Change/ Reason:** The parts highlighted in **bold** were newly added in parts catalog.

## 2. Projector 2



## 2. Projector 2

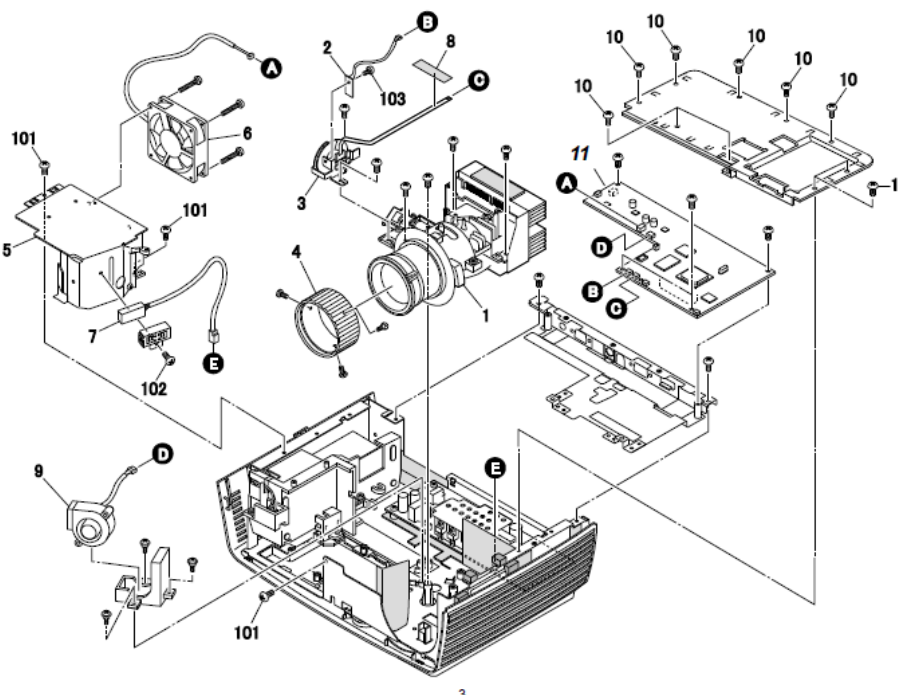
Index No.	Part No.	Description	Q'ty Per Assembly
1	Y0803100	OPTICS SECTION:MIMOSAPJ1:XGA (X2150/X2160/X2170/X2180)	1
1	Y0803200	OPTICS SECTION:MIMOSAPJ1:SVGA (S2150/S2160/S2170/S2180)	1
2	Y0803520	PCB:SENSOR:CW	1
3	Y0803510	OPTICAL FILTER:CW:SUB-ASS'Y	1
4	Y0803600	RING:FOCUS:WHITE (S2170/X2170)	1
4	Y0803650	RING:FOCUS:BLACK (S2150/S2160/S2180/X2150/X2160/X2180)	1
6	Y0802055	HOUSING:MERCURY LAMP:SUB-ASS'Y	1
6	Y0802255	FAN:MM70X20	1
7	Y0802065	THERMOSTAT	1
8	Y0800321	TAPE:17X30	1
9	Y0802155	FAN:MERCURY LAMP:SUB-ASS'Y	1
10	AA143850	FLAT SCREW:M3X5:SIDE FENCE	9
11	Y0805025	PCB:MAIN:X (X2150/X2160/X2170/X2180)	1
11	Y0805035	PCB:MAIN:S (S2150/S2160/S2170/S2180)	1

[illegible]

Model: Mimosa-PJ1		Date: 20-Aug-15	No.: RY084002
Subject: PartsCatalog Correction		Prepared by: Shingo Ishizu	
From: VC Tech Support Section, Solution Support Dept.			
Classification:	<input type="checkbox"/> Troubleshooting	<input checked="" type="checkbox"/> Part information	<input type="checkbox"/> Action required
	<input type="checkbox"/> Mechanical	<input type="checkbox"/> Electrical	<input type="checkbox"/> Service manual revision
	<input type="checkbox"/> Paper path	<input type="checkbox"/> Transmit/receive	<input type="checkbox"/> Retrofit information
	<input type="checkbox"/> Product Safety	<input type="checkbox"/> Other (      )	<input type="checkbox"/> Tier 2

**Change/ Reason:** The parts highlighted in **bold** were newly added in parts catalog.

## 2. Projector 2



## 2. Projector 2

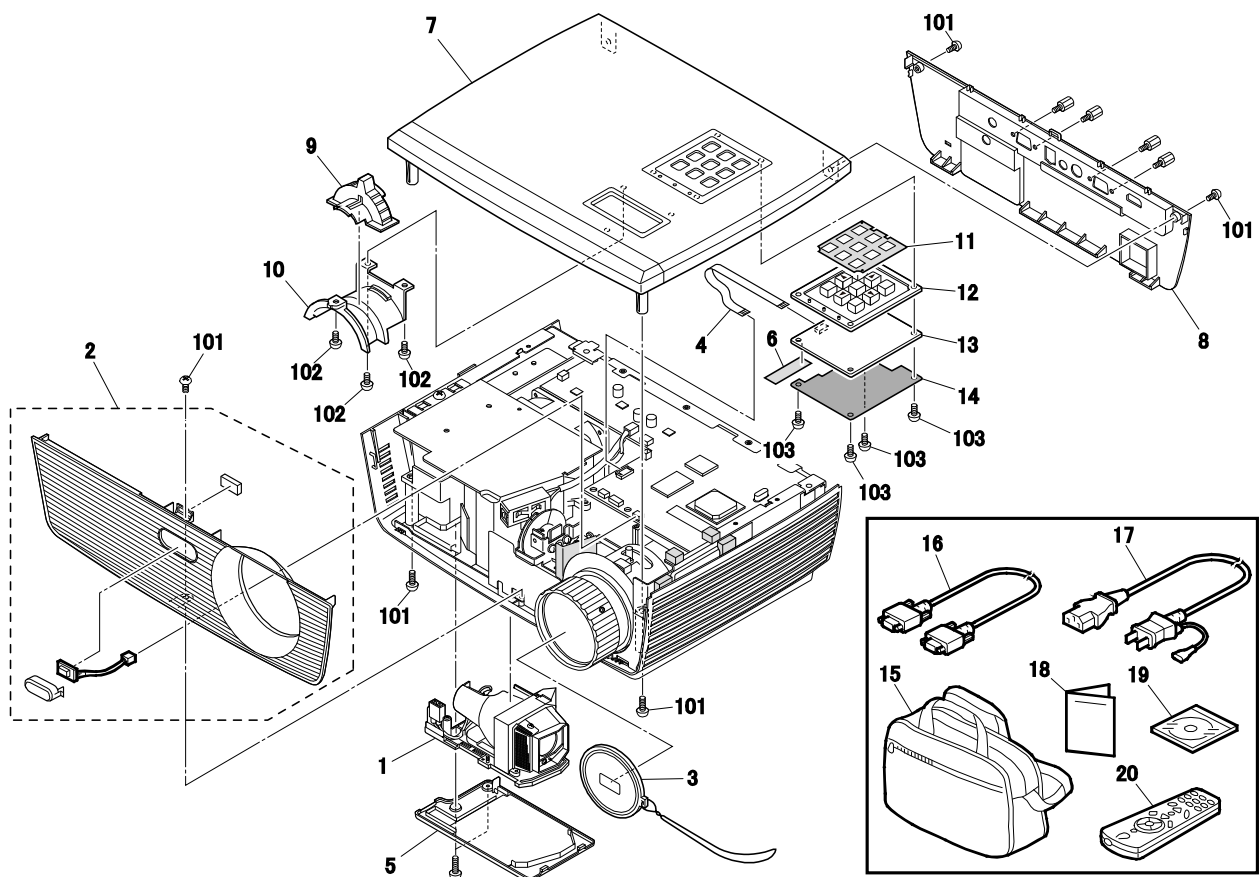
Index No.	Part No.	Description	Q'ty Per Assembly
1	Y0803100	OPTICS SECTION:MIMOSAPJ1:XGA (X2150/X2160/X2170/X2180)	1
1	Y0803200	OPTICS SECTION:MIMOSAPJ1:SVGA (S2150/S2160/S2170/S2180)	1
2	Y0803520	PCB:SENSOR:CW	1
3	Y0803510	OPTICAL FILTER:CW:SUB-ASS'Y	1
4	Y0803600	RING:FOCUS:WHITE (S2170/X2170)	1
4	Y0803650	RING:FOCUS:BLACK (S2150/S2160/S2180/X2150/X2160/X2180)	1
6	Y0802055	HOUSING:MERCURY LAMP:SUB-ASS'Y	1
6	Y0802255	FAN:MM70X20	1
7	Y0802065	THERMOSTAT	1
8	Y0800321	TAPE:17X30	1
9	Y0802155	FAN:MERCURY LAMP:SUB-ASS'Y	1
10	AA143850	FLAT SCREW:M3X5:SIDE FENCE	9
11	Y0805025	PCB:MAIN:X (X2150/X2160/X2170/X2180)	1
11	Y0805035	PCB:MAIN:S (S2150/S2160/S2170/S2180)	1

[illegible]

Model: Mimosa-PJ1		Date: 6-Jan-16	No.: RY084003
Subject: PartsCatalog Correction		Prepared by: Shingo Ishizu	
From: VC Products Support Sect., Solution Support Dept.			
Classification:	<input type="checkbox"/> Troubleshooting	<input checked="" type="checkbox"/> Part information	<input type="checkbox"/> Action required
	<input type="checkbox"/> Mechanical	<input type="checkbox"/> Electrical	<input type="checkbox"/> Service manual revision
	<input type="checkbox"/> Paper path	<input type="checkbox"/> Transmit/receive	<input type="checkbox"/> Retrofit information
	<input type="checkbox"/> Product Safety	<input type="checkbox"/> Other (      )	<input type="checkbox"/> Tier 2

**Change/ Reason:** The parts highlighted in **bold** were newly added in the parts catalog.

## 1. Projector 1



**Model: Mimosa-PJ1**
**Date: 6-Jan-16**
**No.: RY084003**

## 1. Projector 1

Index No.	Part No.	Description	Q'ty Per Assembly	Index No.	Part No.	Description	Q'ty Per Assembly
1	Y0803950	OPTICS SECTION:MERCURY LAMP:CHN	1	10	Y0801163	HOLDER:LEVER:ZOOM:ASS'Y	1
2	Y0801510	COVER:FRONT:WHITE:ASS'Y (S2170/ <del>X2170</del> )	1	11	Y0801184	SHEET:KEYTOP	1
2	Y0801550	COVER:FRONT:BLACK:ASS'Y (S2150/S2160/S2180/X2150/X2160/X2180)	1	12	Y0801131	KEY:OPERATION SUB-UNIT:WHITE:EXP (S2150/S2160/S2170/X2150/X2160/X2170)	1
<b>2</b>	<b>Y0861510</b>	<b>COVER:FRONT:WHITE:ASS'Y (X2170)</b>	<b>1</b>	12	Y0801231	KEY:OPERATION SUB-UNIT:BLACK:EXP (S2180/X2180)	1
3	Y0801905	CAP:LENS:ASS'Y	1	13	Y0801151	PCB:OPERATION SUB-UNIT:ASS'Y	1
4	Y0805651	HARNES:FFC:OPERATION SUB-UNIT	1	14	Y0801185	INSULATING SHEET:PCB	1
5	Y0801330	COVER:MERCURY LAMP:WHITE:EXP:(S2170/ <del>X2170</del> )	1	15	Y0806085	SOFT CASE:MIMOSA-PJ1	1
5	Y0801370	COVER:MERCURY LAMP:BLACK:EXP (S2150/S2160/S2180/X2150/X2160/X2180)	1	16	Y0206084	CABLE:RGB:42.00200G105	1
<b>5</b>	<b>Y0861330</b>	<b>COVER:MERCURY LAMP:WHITE:EXP:(X2170)</b>	<b>1</b>	17	Y0206078	POWER SUPPLY CORD:CHN:42.81004G001	1
6	Y0800321	TAPE:17X30	1	18	Y0806055	INSTALLATION PROCEDURE:CHN	1
7	Y0801116	COVER:UPPER:WHITE:SUB-ASS'Y (S2150/S2160/S2170/X2150/X2160/X2170)	1	19	Y0806074	CD-ROM:CHN:ASS'Y	1
7	Y0801216	COVER:UPPER:BLACK:SUB-ASS'Y (S2180/X2180)	1	<b>20</b>	<b>Y0576080</b>	<b>REMOTE CONTROL:EXP</b>	<b>1</b>
8	Y0801465	COVER:IO_7:BLACK:EXP (S2170/ <del>X2170</del> )	1				
8	Y0801415	COVER:IO_7:WHITE:EXP (S2150/S2160/S2180/X2150/X2160/X2180)	1	101	03130080N	PAN HEAD SCREW:M3X8	
<b>8</b>	<b>Y0861415</b>	<b>COVER:IO_7:BLACK:EXP (X2170)</b>	<b>1</b>	102	03130050N	PHILIPS PAN HEAD SCREW - M3X5	
9	Y0801162	LEVER:ZOOM:WHITE (S2150/S2160/S2170/X2150/X2160/X2170)	1	103	03130060N	SCREW - M3X6	
9	Y0801262	LEVER:ZOOM:BLACK (S2180/X2180)	1				