

Reissued: 19-Aug-14

Model: Antares-PJ1 cw	Date: 17-May-12	No.: RY020001c
-----------------------	-----------------	----------------

RTB Reissue

The items in bold italics have been corrected.

Subject: Firmware Release Note: Main		Prepared by: S. Ishizu	
From: NA Support Sect, Solution Support Dept.			
Classification:	<input type="checkbox"/> Troubleshooting <input type="checkbox"/> Mechanical <input type="checkbox"/> Paper path <input type="checkbox"/> Product Safety	<input type="checkbox"/> Part information <input type="checkbox"/> Electrical <input type="checkbox"/> Transmit/receive <input checked="" type="checkbox"/> Other (Firmware)	<input type="checkbox"/> Action required <input type="checkbox"/> Service manual revision <input type="checkbox"/> Retrofit information <input checked="" type="checkbox"/> Tier 2

This RTB has been issued to announce the firmware release information for the **Main**.

Version	Program No.	Effective Date	Availability of RFU
<i>B07</i>	<i>Y0205510C</i>	<i>August 2014 production</i>	<i>Not available</i>
B06	Y0205510B	December 2013 production	Not available
B05	Y0205510A	December 2012 production	Not available
B04	Y0205510	May 2012 production	Not available

Note: Definition of Availability of RFU via @Remote
"Available": The firmware can be updated via RFU or SD card.
"Not available": The firmware can only be updated via SD card.

Version	Modified Points or Symptom Corrected
<i>B07</i>	<i>Small bug fix</i>
B06	1. The following change was made for ErP Lot 6 compliance: The default value of "Power Off on No Signal" was changed from "OFF" to "20 min." Location: [Menu] -> [Default Setting 1] -> [Power Off on No Signal] 2. The Arabic display language was added to the OSD menu.
B05	Other: Color reproduction was improved.
B04	Initial release

Reissued: 15-Jun-15

Model: Antares-PJ1/Rigel-PJ1/Polaris-PJ1/ Mizar-PJ1/Mimosa-PJ1	Date: 17-May-12	No.: RY020002d
-------------------------------------------------------------------	-----------------	----------------

RTB Reissue

The items in ***bold italics*** have been corrected or added.

Subject: Firmware Release Note: FW Update		Prepared by: S. Ishizu	
From: VC Products Support Sect, Solution Support Dept.			
Classification:	<input type="checkbox"/> Troubleshooting <input type="checkbox"/> Mechanical <input type="checkbox"/> Paper path <input type="checkbox"/> Product Safety	<input type="checkbox"/> Part information <input type="checkbox"/> Electrical <input type="checkbox"/> Transmit/receive <input checked="" type="checkbox"/> Other (Firmware)	<input type="checkbox"/> Action required <input type="checkbox"/> Service manual revision <input type="checkbox"/> Retrofit information <input checked="" type="checkbox"/> Tier 2

This RTB has been issued to announce the firmware release information for the **FW Update**.

Version	Program No.	Effective Date	Availability of RFU
12.6	Y0185511B	August 2014 production	Not available
10.3	Y0185511A	November 2012 production	Not available
9.2	Y0185511	May 2012 production	Not available

Note: Definition of Availability of RFU via @Remote
“Available”: The firmware can be updated via RFU or SD card.

“Not available”: The firmware can only be updated via SD card.

Version	Modified Points or Symptom Corrected
12.6	Firmware modified to support the DDP 442X. Additional Supported Model: Polaris-PJ1/ Mizar-PJ1/ <i>Mimosa-PJ1</i>
10.3	NOTE: 1. There is no functional difference between this version (v10.3) and the previous version, v9.2. This version was released in accordance with the modification made to the DLP Composer (which is not released). 2. The FlashDeviceParameters.txt text file is provided as an attachment to this firmware release.
9.2	Initial release

Reissued: 19-Aug-14

Model: Antares-PJ1 cx	Date: 15-May-12	No.: RY020003c
-----------------------	-----------------	----------------

RTB Reissue

The items in bold italics have been corrected.

Subject: Firmware Release Note: Main		Prepared by: S. Ishizu	
From: NA Support Sect, Solution Support Dept.			
Classification:	<input type="checkbox"/> Troubleshooting <input type="checkbox"/> Mechanical <input type="checkbox"/> Paper path <input type="checkbox"/> Product Safety	<input type="checkbox"/> Part information <input type="checkbox"/> Electrical <input type="checkbox"/> Transmit/receive <input checked="" type="checkbox"/> Other (Firmware)	<input type="checkbox"/> Action required <input type="checkbox"/> Service manual revision <input type="checkbox"/> Retrofit information <input checked="" type="checkbox"/> Tier 2

This RTB has been issued to announce the firmware release information for the **Main**.

Version	Program No.	Effective Date	Availability of RFU
<i>B07</i>	<i>Y0215510C</i>	<i>August 2014 production</i>	<i>Not available</i>
B06	Y0215510B	December 2013 production	Not available
B05	Y0215510A	December 2012 production	Not available
B04	Y0215510	May 2012 production	Not available

Note: Definition of Availability of RFU via @Remote
"Available": The firmware can be updated via RFU or SD card.
"Not available": The firmware can only be updated via SD card.

Version	Modified Points or Symptom Corrected
<i>B07</i>	<i>Small bug fix</i>
B06	1. The following change was made for ErP Lot 6 compliance: The default value of "Power Off on No Signal" was changed from "OFF" to "20 min." Location: [Menu] -> [Default Setting 1] -> [Power Off on No Signal] 2. The Arabic display language was added to the OSD menu.
B05	Other: Color reproduction was improved.
B04	Initial release

Reissued: 19-Aug-14

Model: Antares-PJ1 cs	Date: 17-May-12	No.: RY020004d
-----------------------	-----------------	----------------

RTB Reissue

The items in bold italics have been corrected.

Subject: Firmware Release Note: Main		Prepared by: S. Ishizu	
From: NA Support Sect, Solution Support Dept.			
Classification:	<input type="checkbox"/> Troubleshooting <input type="checkbox"/> Mechanical <input type="checkbox"/> Paper path <input type="checkbox"/> Product Safety	<input type="checkbox"/> Part information <input type="checkbox"/> Electrical <input type="checkbox"/> Transmit/receive <input checked="" type="checkbox"/> Other (Firmware)	<input type="checkbox"/> Action required <input type="checkbox"/> Service manual revision <input type="checkbox"/> Retrofit information <input checked="" type="checkbox"/> Tier 2

This RTB has been issued to announce the firmware release information for the **Main**.

Version	Program No.	Effective Date	Availability of RFU
<i>C43</i>	<i>Y0225510D</i>	<i>August 2014 production</i>	<i>Not available</i>
C42	Y0225510C	December 2013 production	Not available
C41	Y0225510B	April 2013 production	Not available
B05	Y0225510A	December 2012 production	Not available
B04	Y0225510	May 2012 production	Not available

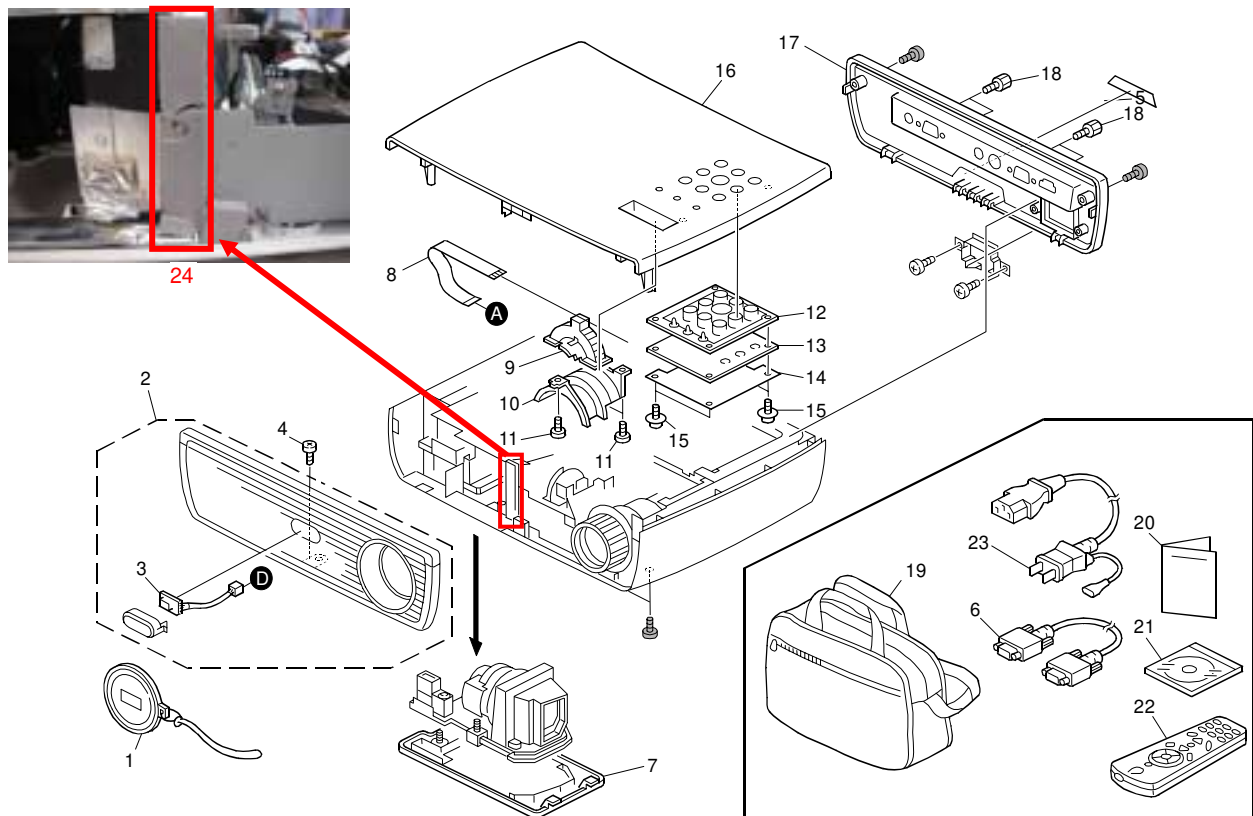
Note: Definition of Availability of RFU via @Remote
"Available": The firmware can be updated via RFU or SD card.
"Not available": The firmware can only be updated via SD card.

Version	Modified Points or Symptom Corrected
<i>C43</i>	<i>Small bug fix</i>
C42	<p>The following change was made for ErP Lot 6 compliance:</p> <p>The default value of "Power Off on No Signal" was changed from "OFF" to "20 min.".</p> <p>Location: [Menu] -> [Default Setting 1] -> [Power Off on No Signal]</p>
C41	<p>Symptom Corrected:</p> <p>The Arabic display language was added to the OSD menu.</p> <p><u>NOTE</u></p> <p>When this firmware is applied, followings must be required.</p> <ol style="list-style-type: none"> 1. Before you update the firmware, check the lamp hours and write this number down. Then, after updating, manually input this value. 2. After updating, do the fan RPM calibration.
B05	<p>Other:</p> <p>Color reproduction was improved.</p>
B04	Initial release

Model: Antares-PJ1cs/cx/cw		Date: 20-Aug-12	No.: RY020005
Subject: PartsCatalog Correction		Prepared by: Shingo Ishizu	
From: 2nd Tech Service Sect., MFP/P Tech Service Dept.			
Classification:	<input type="checkbox"/> Troubleshooting <input type="checkbox"/> Mechanical <input type="checkbox"/> Paper path <input type="checkbox"/> Product Safety	<input checked="" type="checkbox"/> Part information <input type="checkbox"/> Electrical <input type="checkbox"/> Transmit/receive <input type="checkbox"/> Other ()	<input type="checkbox"/> Action required <input type="checkbox"/> Service manual revision <input type="checkbox"/> Retrofit information <input type="checkbox"/> Tier 2

Change: The parts highlighted in **bold** were newly registered as service parts.

Reason: To improve serviceability.

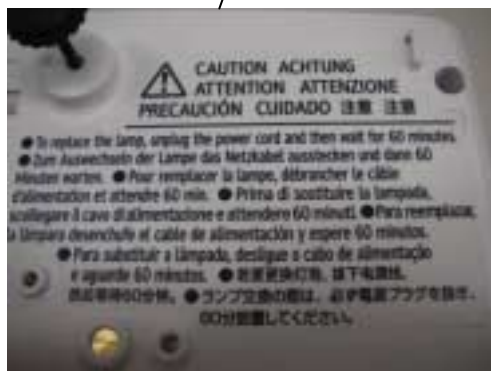
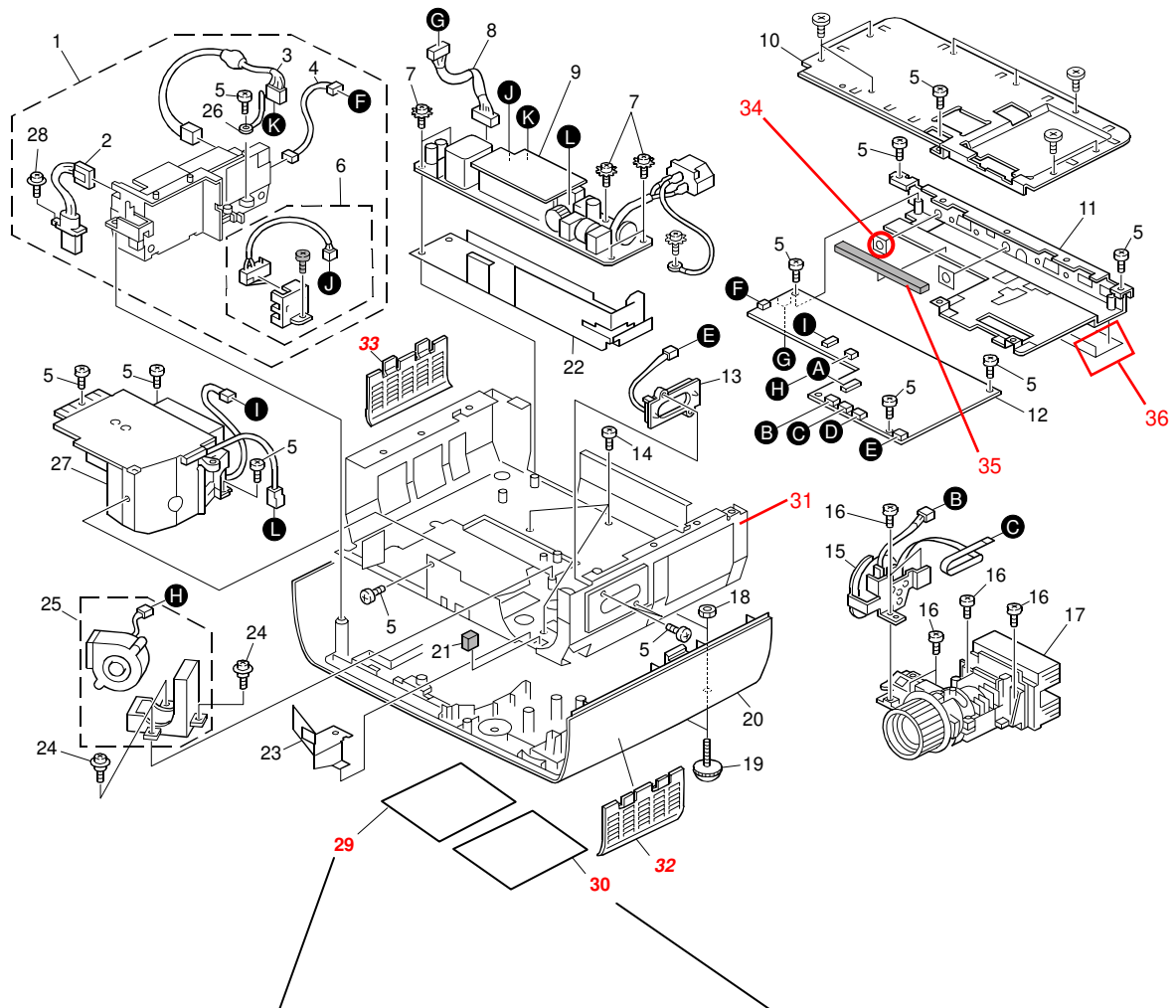


Model: Antares-PJ1cs/cx/cw

Date: 20-Aug-12

No.: RY020005

Index No.	Part No.	Description	Q'ty Per Assembly
1	Y020 1121	Cap:Lens:75.8FL03G001	1
2	Y020 1101	Cover:Front:51.8MC04G001	1
3	Y020 1106	Optics Sensor:80.8MB05G001	1
4	Y020 2906	Pan Head Screw:M3x6:85.1A526G060	1
5	Y020 8201	Decal:WX2130:EXP:35.8ME01G001	1
5	Y021 8203	Decal:X2130:EXP:35.8ME01G001	1
5	Y022 8205	Decal:S2130:EXP:35.8MB01G001	1
6	Y020 6079	Cable:RGB	1
7	Y020 1065	Cover:Lamp:Ass'y	1
8	Y020 5100	Harness:Operation Sub-unit:42.00303G001	1
9	Y020 1091	Ring:Zoom:51.8CS08G052	1
10	Y020 1092	Holder:Ring:Zoom:51.8CS02G003	1
11	Y020 2904	Pan Head Screw:M3x5:85.1A123G050	2
12	Y020 1296	Keytop:Printing:EXP:52.8MC01G001	1
13	Y020 1086	PCB:Operation Sub-unit:80.8MB03G001	1
14	Y020 1088	Insulating Sheet:Operation Sub-unit	1
15	Y020 2903	Pan Head With Collar Screw:M2x4:85.3A122G040	4
16	Y020 1282	Cover:Upper:EXP:0000:Sub-Ass'y	1
17	Y020 1116	Cover:Rear:EXP:51.8MC03G001	1
18	Y020 2902	Hexagon Head Bolt:85.005AG308	4
19	Y020 6085	Soft Case	1
20	Y020 6053	Installation Proceduer:Pamphlet:NA	1
21	Y020 6072	CD-ROM:EXP:ASS'Y	1
22	Y020 6081	Rimote Control:EXP	1
23	Y020 6076	Power Supply Cord:NA	1
23	Y020 6077	Power Supply Cord:EU	1
23	Y020 6078	Power Supply Cord:CHN	1
24	Y020 2070	Seal:Housing:Lamp:Front:52.8MC05G001	1



Model: Antares-PJ1cs/cx/cw	Date: 20-Aug-12	No.: RY020005
----------------------------	-----------------	---------------

Index No.	Part No.	Description	Q'ty Per Assembly
1	Y020 5056	Power Pack:70.8MC07G001	1
2	Y020 5060	Harness:Power Source:Mercury Lamp:	1
3	Y020 5059	Harness:Power Source:PP:42.0043QG001	1
4	Y020 5058	Harness:Control:PP:42.00455G022	1
5	Y020 2906	Pan Head Screw:M3x6:85.1A526G060	9
6	Y020 5071	Safety Switch:Ass'y	1
7	Y020 2910	Pan Head Screw:Washer:M3x8:85.13123G080	4
8	Y020 5053	Harness:Power Source:Control:42.00455G022	1
9	Y020 5052	Power Supply Unit:75.8MB02GP01	1
10	Y020 5110	Bracket:Base:Upper:61.8CS04G011	1
11	Y020 5091	Bracket:Base:Lower:61.8CS05G071	1
12	Y020 5082	PCB:Main Control:Y020:Ass'y	1
12	Y021 5082	PCB:Main Control:Y021:Ass'y	1
12	Y022 5082	PCB:Main Control:Y022:000000:Ass'y	1
13	Y020 1077	Speaker:2W:49.8CQ01G001	1
14	Y020 2904	Pan Head Screw:M3x5:85.1A123G050	2
15	Y020 3052	DC Motor:C_Wheel:70.8MC06G001	1
16	Y020 2911	Pan Head Screw:M2.6x5:85.1A526G050	6
17	Y020 3051	Optical Unit:CW:70.8ME015G001	1
17	Y021 3051	Optical Unit:CX:70.8MC05G001	1
17	Y022 3051	Optical Unit:CS:70.8MB01G001	1
18	Y020 2900	Nut:M3:86.00122G020	2
19	Y020 1061	Rubber Foot:Adjusting Pin:52.8EH05G001	2
20	Y020 1051	Base:51.8CS02G051:Press Fit	1
21	Y020 1075	Insulating Sheet:K-lock:51.8CS15G001	1
22	Y020 1074	Insulating Sheet:Power Supply Unit:	1
23	Y020 1076	Shielding Plate:Lens:51.8MC06G011	1
24	Y020 2909	Stepped Screw:M3x6:61.87340G001	3
25	Y020 2051	DC Fan Motor:Sirocco:0000:Ass'y	1
26	Y020 5075	Clamp:61.8EH02G001	1
27	Y020 2061	DC Fan Motor:Axial:70.8MC08G001	1
28	Y020 2903	Pan Head With Collar Screw:M2x4:	1
29	Y020 1052	Decal:Caution	1
30	Y020 1053	Decal:Warning	1
31	Y020 1073	Frame: Lower	1
32	Y020 1150	Filter: Left	1
33	Y020 1155	Filter: Right	1
34	Y020 5092	Seal:Earth:Audio	1
35	Y020 5094	Cushion:Base	1
36	Y0205095	Insulating Sheet	1

Model: Antares-PJ1cs/cx		Date: 22-Aug-12	No.: RY020006
Subject: Add new model (Antares-T-PJ1) for China		Prepared by: Shingo Ishizu	
From: 2nd Tech Service Sect., MFP/P Tech Service Dept.			
Classification:	<input type="checkbox"/> Troubleshooting <input type="checkbox"/> Mechanical <input type="checkbox"/> Paper path <input type="checkbox"/> Product Safety	<input checked="" type="checkbox"/> Part information <input type="checkbox"/> Electrical <input type="checkbox"/> Transmit/receive <input type="checkbox"/> Other ()	<input type="checkbox"/> Action required <input type="checkbox"/> Service manual revision <input type="checkbox"/> Retrofit information <input type="checkbox"/> Tier 2

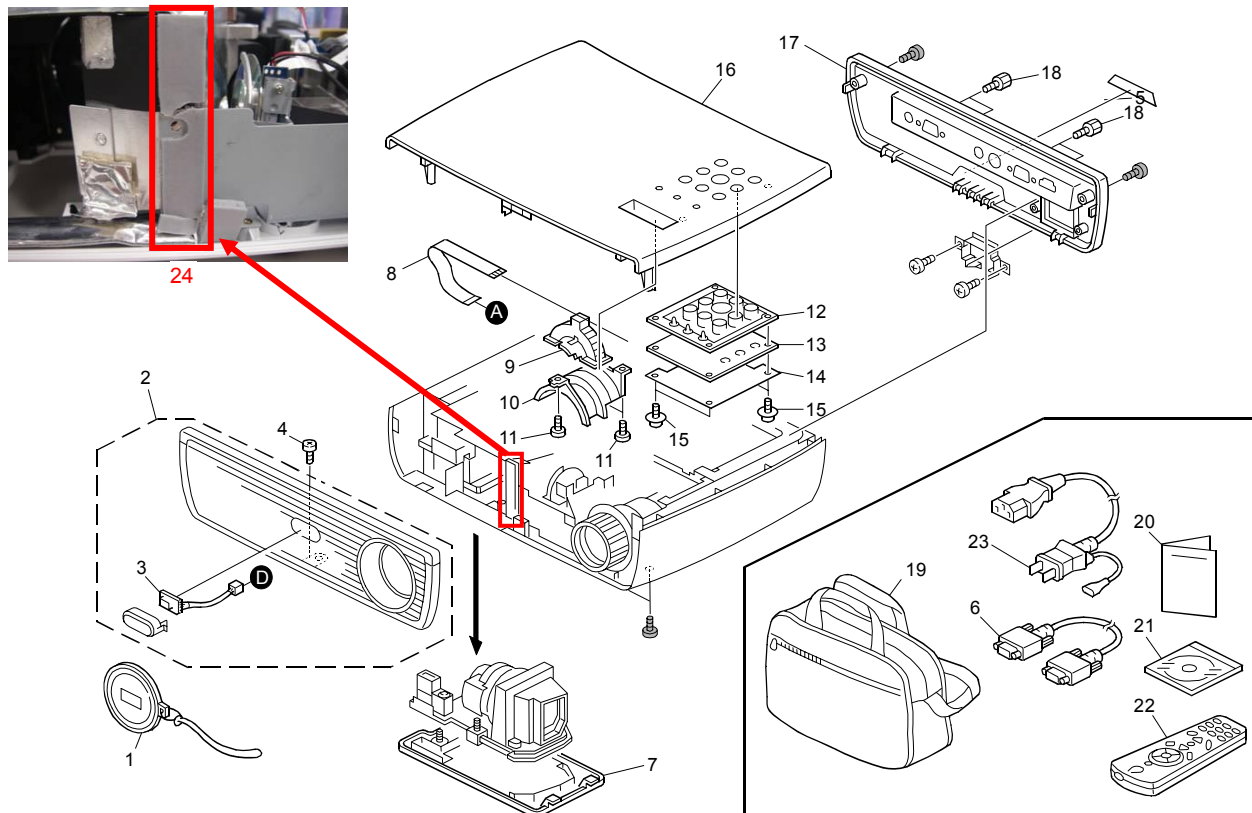
Old part number	New part number	Description	Q'ty	Int	Page	Index	Note
-	Y0318203	Decal: K120: EXP	1	-	3	5	
-	Y0328205	Decal: K110: EXP	1	-	3	5	
-	Y0311283	Cover: Upper: EXP	1	-	3	16	
-	Y0311065	Cover: Lamp: Assy	1	-	3	7	
-	Y0311091	Ring:Zoom	1	-	3	9	
-	Y0311296	Keytop(Y031/Y032)	1	-	3	12	
-	Y0316081	Remote Control(Y031/Y032)	1	-	3	22	
-	Y0311052	Decal: Caution	1	-	5	29	
-	Y0311053	Decal: Warning	1	-	5	30	
-	Y0311150	Filter: left	1	-	5	32	
-	Y0311155	Filter: right	1	-	5	33	
-	Y0311051	Base: (Y031/Y032)	1	-	5	20	

Change: The above parts were newly registered.

Reason: New models for China have been released.

Model: Antares-PJ1cs/cx/cw		Date: 22-Mar-13	No.: RY020007
Subject: Parts Catalog Correction		Prepared by: Shingo Ishizu	
From: 2nd Tech Service Sect., MFP/P Tech Service Dept.			
Classification:	<input type="checkbox"/> Troubleshooting <input type="checkbox"/> Mechanical <input type="checkbox"/> Paper path <input type="checkbox"/> Product Safety	<input checked="" type="checkbox"/> Part information <input type="checkbox"/> Electrical <input type="checkbox"/> Transmit/receive <input type="checkbox"/> Other ()	<input type="checkbox"/> Action required <input type="checkbox"/> Service manual revision <input type="checkbox"/> Retrofit information <input type="checkbox"/> Tier 2

Change/ Reason: The parts highlighted in **bold** were newly registered as service parts.

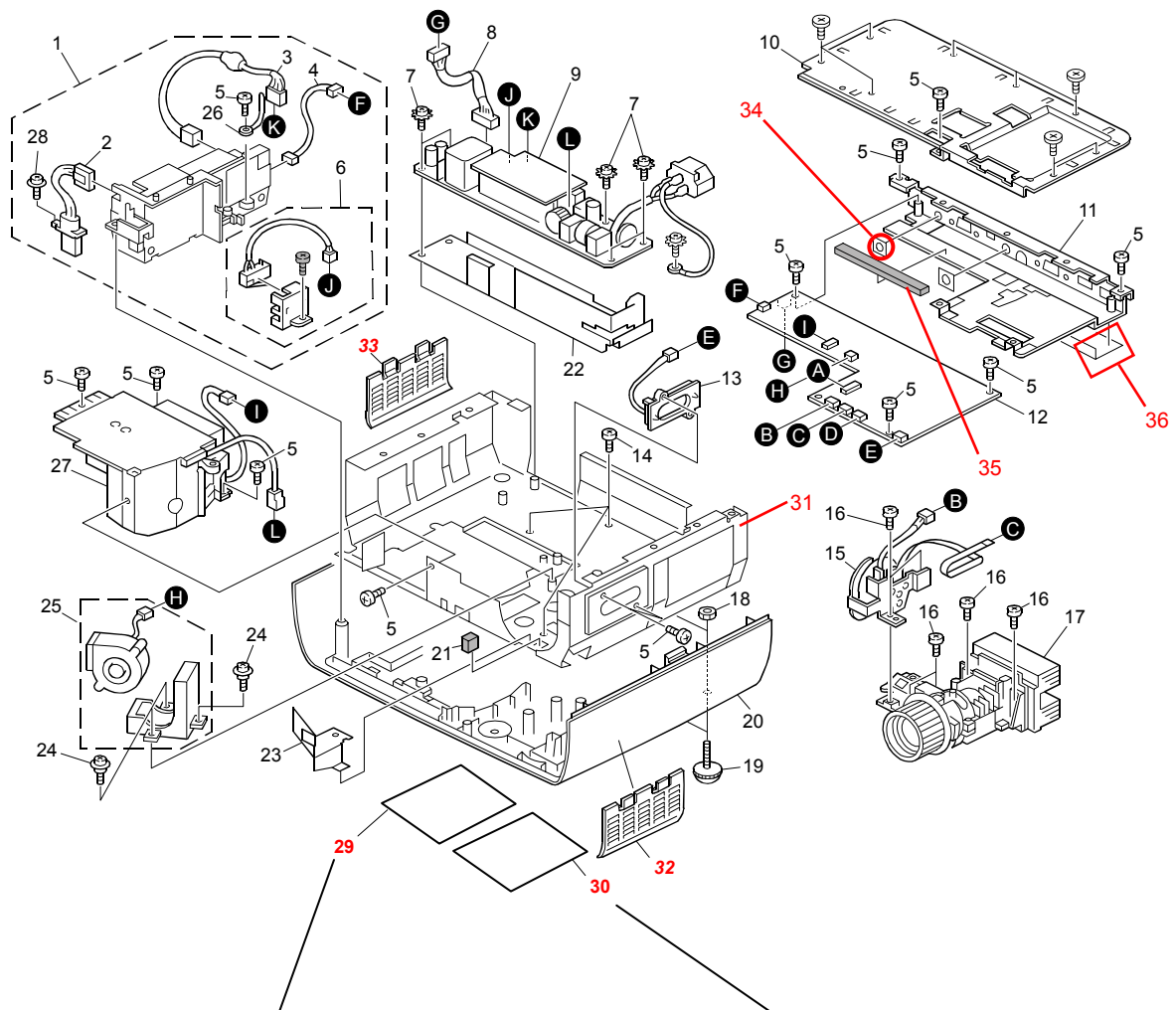


Model: Antares-PJ1cs/cx/cw

Date: 22-Mar-13

No.: RY020007

Index No.	Part No.	Description	Q'ty Per Assembly
1	Y020 1121	Cap:Lens	1
2	Y020 1101	Cover:Front	1
3	Y020 1106	Optics Sensor	1
4	Y020 2906	Pan Head Screw	1
5	Y020 8201	Decal:WX2130:EXP	1
5	Y021 8203	Decal:X2130:EXP	1
5	Y022 8205	Decal:S2130:EXP	1
5	Y031 8203	Decal:K120:EXP	1
5	Y032 8205	Decal:K130:EXP	1
5	Y022 8207	Decal:Plain(Y021-50)	1
6	Y020 6079	Cable:RGB	1
7	Y020 1065	Cover:Lamp:Ass'y	1
7	Y031 1065	Cover:Lamp;Ass'y(Y031/Y032)	1
8	Y020 5100	Harness:Operation Sub-unit	1
9	Y020 1091	Ring:Zoom	1
9	Y031 1091	Ring:Zoom(Y031/Y032)	1
10	Y020 1092	Holder:Ring:Zoom	1
11	Y020 2904	Pan Head Screw	2
12	Y020 1296	Keytop:Printing:EXP	1
12	Y031 1296	Keytop(Y031/Y032)	1
13	Y020 1086	PCB:Operation Sub-unit	1
14	Y020 1088	Insulating Sheet:Operation Sub-unit	1
15	Y020 2903	Pan Head With Collar Screw:M2x4	4
16	Y020 1282	Cover:Upper:EXP:0000:Sub-Ass'y	1
16	Y031 1283	Cover:Upper:EXP(Y031/Y032)	1
17	Y020 1116	Cover:Rear:EXP	1
18	Y020 2902	Hexagon Head Bolt	4
19	Y020 6085	Soft Case	1
20	Y020 6053	Installation Procedure:Pamphlet:NA	1
20	Y020 6055	Installation Procedure: CHN	1
21	Y020 6072	CD-ROM:EXP:ASS'Y	1
21	Y020 6074	CD-ROM:CHN	1
22	Y020 6081	Remote Control:EXP	1
22	Y031 6081	Remote Control(Y031/Y032)	1
23	Y020 6076	Power Supply Cord:NA	1
23	Y020 6077	Power Supply Cord:EU	1
23	Y020 6078	Power Supply Cord:CHN	1
24	Y020 2070	Seal:Housing:Lamp:Front	1



Model: Antares-PJ1cs/cx/cw

Date: 22-Mar-13

No.: RY020007

Index No.	Part No.	Description	Q'ty Per Assembly
1	Y020 5056	Power Pack	1
2	Y020 5060	Harness:Power Source:Mercury Lamp:	1
3	Y020 5059	Harness:Power Source:PP	1
4	Y020 5058	Harness:Control:PP	1
5	Y020 2906	Pan Head Screw:M3x6	9
6	Y020 5071	Safety Switch:Ass'y	1
7	Y020 2910	Pan Head Screw:Washer:M3x8	4
8	Y020 5053	Harness:Power Source:Control	1
9	Y020 5052	Power Supply Unit	1
10	Y020 5110	Bracket:Base:Upper	1
11	Y020 5091	Bracket:Base:Lower	1
12	Y020 5082	PCB:Main Control:Y020:Ass'y	1
12	Y021 5082	PCB:Main Control:Y021:Ass'y	1
12	Y022 5082	PCB:Main Control:Y022:000000:Ass'y	1
13	Y020 1077	Speaker:2W	1
14	Y020 2904	Pan Head Screw:M3x5	2
15	Y020 3052	DC Motor:C_Wheel	1
16	Y020 2911	Pan Head Screw:M2.6x5	6
17	Y020 3051	Optical Unit:CW	1
17	Y021 3051	Optical Unit:CX	1
17	Y022 3051	Optical Unit:CS	1
18	Y020 2900	Nut:M3	2
19	Y020 1061	Rubber Foot:Adjusting Pin	2
20	Y020 1051	Base:51.8CS02G051:Press Fit	1
20	Y031 1051	Base(Y031/Y032)	1
21	Y020 1075	Insulating Sheet:K-lock	1
22	Y020 1074	Insulating Sheet:Power Supply Unit:	1
23	Y020 1076	Shielding Plate:Lens	1
24	Y020 2909	Stepped Screw:M3x6	3
25	Y020 2051	DC Fan Motor:Sirocco:0000:Ass'y	1
26	Y020 5075	Clamp	1
27	Y020 2061	DC Fan Motor:Axial	1
28	Y020 2903	Pan Head With Collar Screw:M2x4:	1
29	Y020 1052	Decal: Caution	1
29	Y031 1052	Decal: Caution(Y031/Y032)	1
30	Y020 1053	Decal: Warning	1
30	Y031 1053	Decal Warning(Y031/Y032)	1
31	Y020 1073	Frame: Lower	1
32	Y020 1150	Filter: Left: CHN	1
32	Y031 1150	Filter: Left(Y031/Y032)	1
33	Y020 1155	Filter: Right: CHN	1
33	Y031 1155	Filter: Right(Y031/Y032)	1
34	Y020 5092	Seal: Earth: Audio	1
35	Y020 5094	Cushion: Base	1
36	Y0205095	Insulating Sheet	1

Model: Antares-PJ1cs/cx/cw

Date: 22-Mar-13

No.: RY020007

Model Antares-PJ1
(Y020/Y021/Y022/
Y031-21/Y032-21/Y021-50)

Model: Antares-PJ1cs/cx/cw

Date: 25-Sep-13

No.: RY020008

Subject: PartsCatalog Correction

Prepared by: Shingo Ishizu

From: NA Tech Support Section, Solution Support Dept

Classification:

☐ Troubleshooting

☒ Part information

☐ Action required

☐ Mechanical

☐ Electrical

☐ Service manual revision

☐ Paper path

☐ Transmit/receive

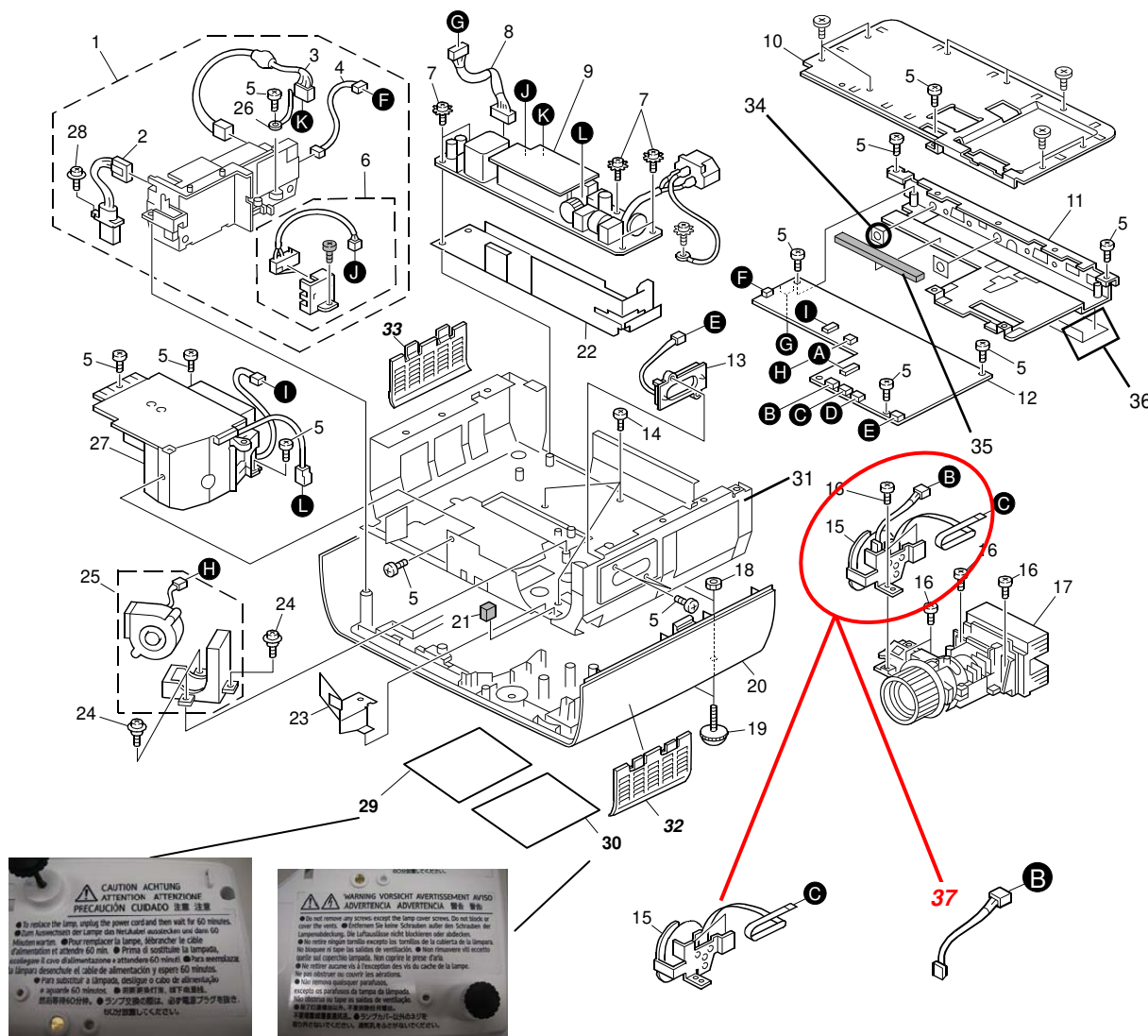
☐ Retrofit information

☐ Product Safety

☐ Other ()

☐ Tier 2

Change/ Reason: The parts highlighted in **bold** were newly registered as service parts.



Model: Antares-PJ1cs/cx/cw

Date: 25-Sep-13

No.: RY020008

Index No.	Part No.	Description	Q'ty Per Assembly
1	Y020 5056	Power Pack	1
2	Y020 5060	Harness:Power Source:Mercury Lamp:	1
3	Y020 5059	Harness:Power Source:PP	1
4	Y020 5058	Harness:Control:PP	1
5	Y020 2906	Pan Head Screw:M3x6	9
6	Y020 5071	Safety Switch:Ass'y	1
7	Y020 2910	Pan Head Screw:Washer:M3x8	4
8	Y020 5053	Harness:Power Source:Control	1
9	Y020 5052	Power Supply Unit	1
10	Y020 5110	Bracket:Base:Upper	1
11	Y020 5091	Bracket:Base:Lower	1
12	Y020 5082	PCB:Main Control:Y020:Ass'y	1
12	Y021 5082	PCB:Main Control:Y021:Ass'y	1
12	Y022 5082	PCB:Main Control:Y022:000000:Ass'y	1
13	Y020 1077	Speaker:2W	1
14	Y020 2904	Pan Head Screw:M3x5	2
15	Y020 3052	DC Motor:C_Wheel	1
16	Y020 2911	Pan Head Screw:M2.6x5	6
17	Y020 3051	Optical Unit:CW	1
17	Y021 3051	Optical Unit:CX	1
17	Y022 3051	Optical Unit:CS	1
18	Y020 2900	Nut:M3	2
19	Y020 1061	Rubber Foot:Adjusting Pin	2
20	Y020 1051	Base:51.8CS02G051:Press Fit	1
20	Y031 1051	Base(Y031/Y032)	1
21	Y020 1075	Insulating Sheet:K-lock	1
22	Y020 1074	Insulating Sheet:Power Supply Unit:	1
23	Y020 1076	Shielding Plate:Lens	1
24	Y020 2909	Stepped Screw:M3x6	3
25	Y020 2051	DC Fan Motor:Sirocco:0000:Ass'y	1
26	Y020 5075	Clamp	1
27	Y020 2061	DC Fan Motor:Axial	1
28	Y020 2903	Pan Head With Collar Screw:M2x4:	1
29	Y020 1052	Decal: Caution	1
29	Y031 1052	Decal: Caution(Y031/Y032)	1
30	Y020 1053	Decal: Warning	1
30	Y031 1053	Decal Warning(Y031/Y032)	1
31	Y020 1073	Frame: Lower	1
32	Y020 1150	Filter: Left: CHN	1
32	Y031 1150	Filter: Left(Y031/Y032)	1
33	Y020 1155	Filter: Right: CHN	1
33	Y031 1155	Filter: Right(Y031/Y032)	1
34	Y020 5092	Seal: Earth: Audio	1
35	Y020 5094	Cushion: Base	1
36	Y020 5095	Insulating Sheet	1
37	Y020 3055	Optics Sensor:CW	1

Model: Antares-PJ1 cw		Date: 11-Oct-13	No.: RY020009
Subject: Troubleshooting about PCB issue		Prepared by: Shingo Ishizu	
From: NA Tech Support Section, Solution Support Dept			
Classification:	<input checked="" type="checkbox"/> Troubleshooting <input type="checkbox"/> Mechanical <input type="checkbox"/> Paper path <input type="checkbox"/> Product Safety	<input type="checkbox"/> Part information <input type="checkbox"/> Electrical <input type="checkbox"/> Transmit/receive <input type="checkbox"/> Other ()	<input type="checkbox"/> Action required <input type="checkbox"/> Service manual revision <input type="checkbox"/> Retrofit information <input type="checkbox"/> Tier 2

Important: If a PCB issue occurs, try the following troubleshooting information. In some cases, the issue can be solved without replacing the PCB unnecessarily.

SYMPTOMS

1. The "Fan error" alert is displayed a few minutes after turning on the main power.
2. Lines/bands appear on the screen.

CAUSE

Symptom 1: The factory blower RPM is incorrect.

Symptom 2: Connection error between the PCB and optical engine unit.

SOLUTION

Symptom 1: Reset the Factory Blower RPM (See the FSM for the procedure).

Symptom 2: Remove the PCB from the optical engine unit, clean the connector, and then reattach the PCB.

Model: Antares-PJ1 cw

Date: 8-Jan-16

No.: RY020010

Subject: **Parts Catalog Correction**

Prepared by: Shingo Ishizu

From: VC Product Support Sect., NB Tech Service Dept.

Classification:

☐ Troubleshooting

☒ Part information

☐ Action required

☐ Mechanical

☐ Electrical

☐ Service manual revision

☐ Paper path

☐ Transmit/receive

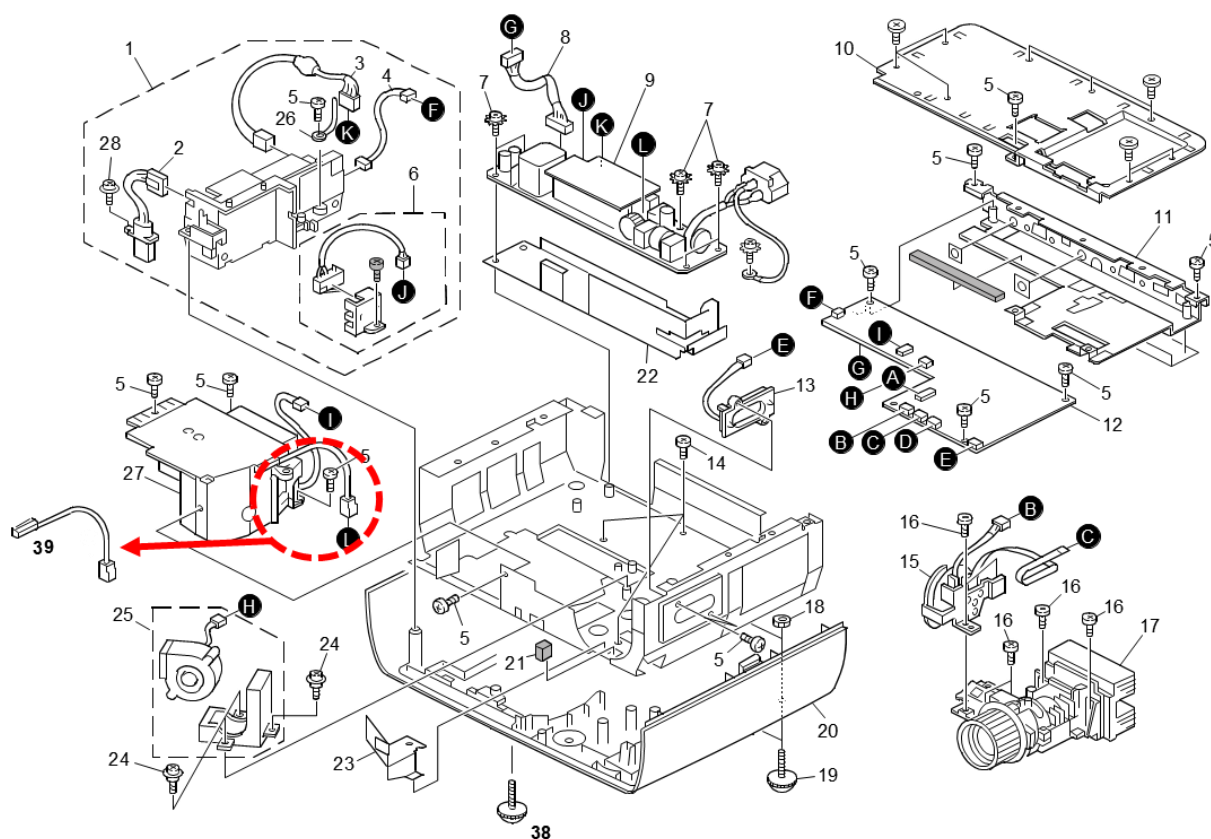
☐ Retrofit information

☐ Product Safety

☐ Other ()

☐ Tier 2

Change: The parts were newly added.



Old part number	New part number	Description	Q'ty	Int	Page	Index	Note
-	Y0201062	Rubber foot front	1	-	3	38	
-	Y0202068	Thermo fuse	1	-	3	39	

Model: Antares-PJ1/Rigel-CX/Rigel-PJ1	Date: 20-May-16	No.: RY020011
---------------------------------------	-----------------	---------------

Subject: Firmware Release Note: FW Update		Prepared by: S. Ishizu	
From: VC Products Support Sect, Solution Support Dept.			
Classification:	<input type="checkbox"/> Troubleshooting	<input type="checkbox"/> Part information	<input type="checkbox"/> Action required
	<input type="checkbox"/> Mechanical	<input type="checkbox"/> Electrical	<input type="checkbox"/> Service manual revision
	<input type="checkbox"/> Paper path	<input type="checkbox"/> Transmit/receive	<input type="checkbox"/> Retrofit information
	<input type="checkbox"/> Product Safety	<input checked="" type="checkbox"/> Other (Firmware)	<input checked="" type="checkbox"/> Tier 2

This RTB has been issued to announce the firmware release information for the **FW Update**.

Version	Program No.	Effective Date	Availability of RFU
9.2	Y0185520	May 2016 production	Not available

Note: Definition of Availability of RFU via @Remote

“Available”: The firmware can be updated via RFU or SD card.

“Not available”: The firmware can only be updated via SD card.

Version	Modified Points or Symptom Corrected
9.2	Additional Model Information: PJ S2130, PJ X2130, PJ WX2130, PJ X5260, PJ WX5140, PJ WX5150, PJ X5140