

Reissued: 12-Apr-16

Model: Soleil-PJ1a/Soleil-PJ1b/Soleil-PJ2/ Altair-PJ1/ Altair-PJ2/Soleil-PJ2.5	Date: 19-Oct-12	No.: RY011003f
---	-----------------	----------------

RTB Reissue

The items in bold italics have been corrected.

Subject: Firmware Release Note: Backup Tool		Prepared by: A. Iwaori	
From: VC Products Support Sec., Solution Support Dept.			
Classification:	<input type="checkbox"/> Troubleshooting <input type="checkbox"/> Mechanical <input type="checkbox"/> Paper path <input type="checkbox"/> Product Safety	<input type="checkbox"/> Part information <input type="checkbox"/> Electrical <input type="checkbox"/> Transmit/receive <input checked="" type="checkbox"/> Other (Firmware)	<input type="checkbox"/> Action required <input type="checkbox"/> Service manual revision <input type="checkbox"/> Retrofit information <input checked="" type="checkbox"/> Tier 2

This RTB has been issued to announce the firmware release information for the **Backup Tool**.

Version	Program No.	Effective Date	Availability of RFU
1.7.0.0	Y0119100G	-	Not available
1.6.0.0	Y0119100F	-	Not available
1.5.0.0	Y0119100E	-	Not available
1.4.0.0	Y0119100D	-	Not available
1.3.0.0	Y0119100C	-	Not available
1.2.0.0	Y0119100B	-	Not available
1.1.0.0	Y0119100A	-	Not available

Note: Definition of Availability of RFU via @Remote
"Available": The firmware can be updated via RFU or SD card.

"Not available": The firmware can only be updated via SD card.

Version	Modified Points or Symptom Corrected
1.7.0.0	1) Additional Model Information None. 2) Specification Changes Able to obtain and display logs related to mercury bridge. 3) Error Corrections None.
1.6.0.0	1) Additional Model Information The following projector is now supported: Soleil PJ2.5 2) Specification Changes None. 3) Error Corrections None.
1.5.0.0	Additional Model Information: - Altair PJ2 models have been added. Specification Changes: The following functions have been added or changed for Altair PJ2:

Reissued: 12-Apr-16

Model: Soleil-PJ1a/Soleil-PJ1b/Soleil-PJ2/ Altair-PJ1/ Altair-PJ2/Soleil-PJ2.5		Date: 19-Oct-12	No.: RY011003f
Version	Modified Points or Symptom Corrected		
	<ul style="list-style-type: none">- Added functionality for obtaining service status information (Service Status Tool).- The tool automatically changes the projector's "Eco mode" settings to "Active stand-by mode" so that the tool can be executed without changing the setting in advance.		
1.4.0.0	Additional Supported Model: Soleil-PJ2		
1.3.0.0	Specification Change: Supports the Backup and Restore functions on the following versions of Altair-PJ1 firmware: Main: Ver. 1008220400 Network USB: Ver. 101300 ECO IO: Ver. 101400		
1.2.0.0	Additional Model Information: Support for the Altair-PJ1 was added.		
1.1.0.0	Initial release		

Reissued: 27-Jan-16

Model: Soleil-PJ1a/ Soleil-PJ1b/ Soleil-PJ2/ Soleil-PJ2.5/Altair-PJ1/ Altair-PJ2	Date: 21-Jul-12	No.: RY011004c
---	-----------------	----------------

RTB Reissue

The items in bold italics have been corrected or added.

Subject: Firmware Release Note: USB to UART Bridge Virtual COM Port driver		Prepared by: A. Iwaori	
From: VC Products Support Sec., Solution Support Dept.			
Classification:	<input type="checkbox"/> Troubleshooting <input type="checkbox"/> Mechanical <input type="checkbox"/> Paper path <input type="checkbox"/> Product Safety	<input type="checkbox"/> Part information <input type="checkbox"/> Electrical <input type="checkbox"/> Transmit/receive <input checked="" type="checkbox"/> Other (Driver)	<input type="checkbox"/> Action required <input type="checkbox"/> Service manual revision <input type="checkbox"/> Retrofit information <input checked="" type="checkbox"/> Tier 2

This RTB has been issued to announce the firmware release information for the **USB to UART Bridge Virtual COM Port driver**.

Version	Program No.	Effective Date	Availability of RFU
1.0.0.0	Y0119102	-	Not available

Note: Definition of Availability of RFU via @Remote
"Available": The firmware can be updated via RFU or SD card.

"Not available": The firmware can only be updated via SD card.

Version	Modified Points or Symptom Corrected
1.0.0.0	<p><i>[Modifications made:]</i></p> <p><i>2015/02/02</i></p> <p><i>Additional support for Altair PJ2 has been included. No other changes have been made to the application.</i></p> <p><i>2016/01/20</i></p> <p><i>Additional support for Soleil PJ2.5 has been included. No other changes have been made to the application.</i></p> <p><i>---</i></p> <p>Initial Release</p>

Model: Altair-PJ1/Altair-PJ2/Soleil-PJ1b/ Soleil-PJ2/Soleil-PJ2.5	Date: 27-Jan-16	No.: RY011008
--	-----------------	---------------

Subject: Firmware Release Note: QuickPack		Prepared by: A. Iwaori	
From: VC Products Support Sec., Solution Support Dept.			
Classification:	<input type="checkbox"/> Troubleshooting <input type="checkbox"/> Mechanical <input type="checkbox"/> Paper path <input type="checkbox"/> Product Safety	<input type="checkbox"/> Part information <input type="checkbox"/> Electrical <input type="checkbox"/> Transmit/receive <input checked="" type="checkbox"/> Other (Firmware)	<input type="checkbox"/> Action required <input type="checkbox"/> Service manual revision <input type="checkbox"/> Retrofit information <input checked="" type="checkbox"/> Tier 2

This RTB has been issued to announce the firmware release information for the **QuickPack**.

Version	Program No.	Effective Date	Availability of RFU
1001	PJSQPA_1001	-	Not available

Note: Definition of Availability of RFU via @Remote

“Available”: The firmware can be updated via RFU or SD card.

“Not available”: The firmware can only be updated via SD card.

Version	Modified Points or Symptom Corrected
1001	<p>1) Additional model information: Initial release.</p> <p>2) Specification changes: None.</p> <p>3) Error corrections: None.</p> <p>Remarks: QuickPack (Win. / Mac.) has been released via the following files.</p> <p>[Windows] QuickPack_WIN_V1000.zip Version: v1.0.0.0</p> <p>[Macintosh] QuickPack_MAC_V1102.zip Version: v1.1.0.2</p>

Reissued: 27-Jan-16

Model: Altair-PJ1/ Altair-PJ2/Soleil-PJ2/Soleil-PJ2.5	Date: 05-Feb-13	No.: RY024001c
--	-----------------	----------------

RTB Reissue

The items in ***bold italics*** have been corrected or added.

Subject: Release Note: FW Update		Prepared by: A. Iwaori	
From: VC Products Support Sec., Solution Support Dept.			
Classification:	<input type="checkbox"/> Troubleshooting <input type="checkbox"/> Mechanical <input type="checkbox"/> Paper path <input type="checkbox"/> Product Safety	<input type="checkbox"/> Part information <input type="checkbox"/> Electrical <input type="checkbox"/> Transmit/receive <input checked="" type="checkbox"/> Other (Firmware)	<input type="checkbox"/> Action required <input type="checkbox"/> Service manual revision <input type="checkbox"/> Retrofit information <input checked="" type="checkbox"/> Tier 2

This RTB has been issued to announce the firmware **FW Update Tool**.

Version	Program No.	Effective Date	Availability of RFU
1.3.0.0	Y0249101B	February 2015 production	Not available
1.1.0.0	Y0249101A	October 2013 production	Not available
1.0.0.0	Y0249101	Initial release	Not available

Note: Definition of Availability of RFU via @Remote
"Available": The firmware can be updated via RFU or SD card.

"Not available": The firmware can only be updated via SD card.

Version	Modified Points or Symptom Corrected
1.3.0.0	Additional Supported Model: Altair-PJ2 <i>Soleil-PJ2.5</i>
1.1.0.0	Additional Supported Model: Soleil-PJ2
1.0.0.0	This is a tool for updating the firmware for the main board on the following models only: Altair-PJ1 Important: This update tool can only be used on these models.

Reissued: 07-Mar-17

Model: Soleil-PJ2	Date: 02-Oct-13	No.: RY033001i
--------------------------	-----------------	----------------

RTB Reissue

The items in bold italics have been corrected or added.

Subject: Firmware Release Note: SYSTEM:SOL-2		Prepared by: T. Takahashi	
From: VC Products Support Sect, Solution Support Dept.			
Classification:	<input type="checkbox"/> Troubleshooting	<input type="checkbox"/> Part information	<input type="checkbox"/> Action required
	<input type="checkbox"/> Mechanical	<input type="checkbox"/> Electrical	<input type="checkbox"/> Service manual revision
	<input type="checkbox"/> Paper path	<input type="checkbox"/> Transmit/receive	<input type="checkbox"/> Retrofit information
	<input type="checkbox"/> Product Safety	<input checked="" type="checkbox"/> Other (Firmware)	<input checked="" type="checkbox"/> Tier 2

This RTB has been issued to announce the firmware release information for the **SYSTEM:SOL-2**.

Version	Program No.	Effective Date	Availability of RFU
10081807-1016-1017	Y0345975M	March 2017 production	Not available
10081807-1016-1016	Y0345975L	December 2016 production	Not available
10061807-1016-1016	Y0345975K	May 2015 production	Not available
10061807-1015-1016	Y0345975J	December 2014 production	Not available
10051807-1015-1015	Y0345975H	June 2014 production	Not available
10051807-1015-1014	Y0345975G	March 2014 production	Not available
10051807-1014-1013	Y0345975F	February 2014 production	Not available
10041807-1013-1012	Y0345975E	January 2013 production	Not available
10041807-1012-1011	Y0345975D	November 2013 production	Not available
10011807-1011-1010	Y0345975B	1st Mass production	Not available

Note: Definition of Availability of RFU via @Remote
"Available": The firmware can be updated via RFU or SD card.

"Not available": The firmware can only be updated via SD card.

Version	Modified Points or Symptom Corrected
10081807-1016-1017	Specification Change UPnP supported. - MAIN:1008180700 - OMAP:101600 - SHOCKLEY:101700
10081807-1016-1016	1)Additional Model Information None. 2)Specification Change China Energy Label support. Changed the default value of "NW Settings On Standby" from "Wired LAN" to "Do not Use" when "Country/Area" set to China. 3)Error Correction None.
10061807-1016-1016	1) Additional Model Information: N/A 2) Specification Changes:

Reissued: 07-Mar-17

Model: Soleil-PJ2		Date: 02-Oct-13	No.: RY033001i
Version	Modified Points or Symptom Corrected		
	N/A 3) Error Corrections: - The areas that are out of projection have been changed from gray to black when projecting via a network or USB memory.		
10061807-1015-1016	1) Additional Model Information: N/A 2) Specification Changes: - Adopted the enforced European wireless communication standard starting in January 2015. 3) Error Corrections: - Automatic startup error when HDMI is connected.		
10051807-1015-1015	Changes: 1) New additional hardware: none 2) Specification changes: none 3) Fixes - If the device is turned on or in an energy-saving state for a long time, some operations might not be applied.		
10051807-1015-1014	1) Additional Model Information N/A 2) Specification Change Support for displaying the Korean language. 3) Error Correction N/A		
10051807-1014-1013	1) Additional Model Information N/A 2) Specification Change N/A 3) Error Correction Improved the Interactive function.		
10041807-1013-1012	1) Additional Model Information N/A 2) Specification Changes - Added the Quick Signage function. 3) Error Corrections - When projecting content from a USB drive, a black image is displayed for one second when Auto Demo starts. - System failure may occur when content is projected via DLNA and then switched to USB drive, and a thumbnail might appear and be inoperative. - A waiting screen appears when switching content that is being projected via DLNA.		

Reissued: 07-Mar-17

Model: Soleil-PJ2		Date: 02-Oct-13	No.: RY033001i
Version	Modified Points or Symptom Corrected		
10041807-1012-1011	Error corrections: <ul style="list-style-type: none">- A network error occurs when the input signal is changed while a slideshow with a display effect is on.- A projection might not be able to restart after ad-hoc projection starts and ends.- QuickProjection fails to search for projectors when it is connected to a specific wireless LAN network.- Wireless LAN easy setup fails when a space is included in the SSID of the wireless LAN network.- Wireless LAN access connection while in Infrastructure mode fails to connect to a network that has multiple networks using the same SSID.- An error message appears during DMR projection.		
10011807-1011-1010	Initial release		

Reissued: 28-Nov-16

Model: Soleil-PJ2	Date: 02-Oct-13	No.: RY033002c
--------------------------	-----------------	----------------

RTB Reissue

The items in bold italics have been corrected or added.

Subject: Firmware Release Note: MAIN:SOL-2		Prepared by: T. Takahashi	
From: NA Support Sect, Solution Support Dept.			
Classification:	<input type="checkbox"/> Troubleshooting <input type="checkbox"/> Mechanical <input type="checkbox"/> Paper path <input type="checkbox"/> Product Safety	<input type="checkbox"/> Part information <input type="checkbox"/> Electrical <input type="checkbox"/> Transmit/receive <input checked="" type="checkbox"/> Other (Firmware)	<input type="checkbox"/> Action required <input type="checkbox"/> Service manual revision <input type="checkbox"/> Retrofit information <input checked="" type="checkbox"/> Tier 2

This RTB has been issued to announce the firmware release information for the **MAIN:SOL-2**.

Version	Program No.	Effective Date	Availability of RFU
1008180700	Y0335951G	December 2016 production	Not available
1006180700	Y0335951F	December 2014 production	Not available
1005180700	Y0335951E	February 2014 production	Not available
1004180700	Y0335951D	1st Mass production	Not available

Note: Definition of Availability of RFU via @Remote
"Available": The firmware can be updated via RFU or SD card.

"Not available": The firmware can only be updated via SD card.

Version	Modified Points or Symptom Corrected
1008180700	1)Additional Model Information None. 2)Specification Change China Energy Label support. Changed the default value of "NW Settings On Standby" from "Wired LAN" to "Do not Use" when "Country/Area" set to China. 3)Error Correction None.
1006180700	1) Additional Model Information: N/A 2) Specification Changes: - Adopted Lot6. 3) Error Corrections: - Automatic startup error when HDMI is connected.
1005180700	Changes: - Improved the Interactive function. - Support for displaying the Korean language.
1004180700	Initial release

Model: Soleil-PJ2d	Date: 11-Dec-14	No.: RY036001
--------------------	-----------------	---------------

Subject: Remote whiteboard sharing cannot start		Prepared by: T. Takahashi	
From: : NA Support Sec. Solution Support Dep.			
Classification:	<input checked="" type="checkbox"/> Troubleshooting	<input type="checkbox"/> Part information	<input type="checkbox"/> Action required
	<input type="checkbox"/> Mechanical	<input type="checkbox"/> Electrical	<input type="checkbox"/> Service manual revision
	<input type="checkbox"/> Paper path	<input type="checkbox"/> Transmit/receive	<input type="checkbox"/> Retrofit information
	<input type="checkbox"/> Product Safety	<input type="checkbox"/> Other ()	<input checked="" type="checkbox"/> Tier 2

SYMPTOM

Remote whiteboard sharing does not start under the following conditions:

- Software v1.2.2.0 or earlier
- The software is installed in a language other than Japanese
- JAVA_HOME is not pre-configured in the System Properties in Windows.
(System Properties - Advanced System Settings - Advanced - Environment Variables - System variables)

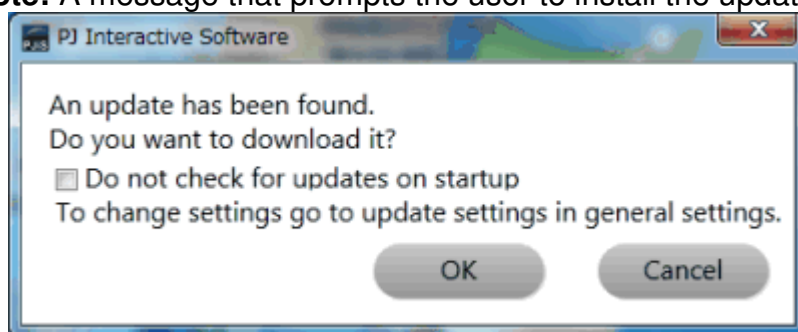
CAUSE

Software bug

SOLUTION

Update the software to **v1.2.3.0** or later.

Note: A message that prompts the user to install the update will appear.



Model: Soleil-PJ2d		Date: 16-Apr-15	No.: RY036002
Subject: Parts information		Prepared by: T. Takahashi	
From: : VC Support Sec. Solution Support Dep.			
Classification:	<input type="checkbox"/> Troubleshooting <input type="checkbox"/> Mechanical <input type="checkbox"/> Paper path <input type="checkbox"/> Product Safety	<input checked="" type="checkbox"/> Part information <input type="checkbox"/> Electrical <input type="checkbox"/> Transmit/receive <input type="checkbox"/> Other ()	<input type="checkbox"/> Action required <input type="checkbox"/> Service manual revision <input type="checkbox"/> Retrofit information <input type="checkbox"/> Tier 2

Change/Reason: This part was missing from the Parts Catalog.

Model	Old part number	New part number	Description	Q'ty	Int	Page	Index	Note
Soleil-PJ1d	-	Y0368243	MODULE:PB-DONGLE:ASS'Y	1	-	15	10	

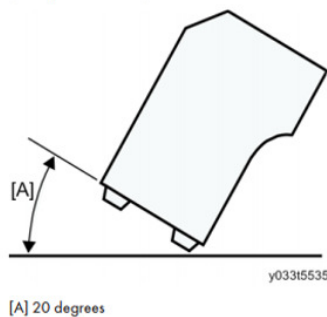
Model: Soleil-PJ2a/b		Date: 30-May-16	No.: RY033003
Subject: Service manual revision: Keystone Calibration & Troubleshooting		Prepared by: Takuma. Sakakibara	
From: VC Tech Service Sect., MFP/Printer Tech Service Dept.			
Classification:	<input type="checkbox"/> Troubleshooting <input type="checkbox"/> Mechanical <input type="checkbox"/> Paper path <input type="checkbox"/> Product Safety	<input type="checkbox"/> Part information <input type="checkbox"/> Electrical <input type="checkbox"/> Transmit/receive <input type="checkbox"/> Other ()	<input type="checkbox"/> Action required <input checked="" type="checkbox"/> Service manual revision <input type="checkbox"/> Retrofit information <input type="checkbox"/> Tier 2

Field Service Manual correction:

3. Replacement and Adjustment - Keystone Calibration

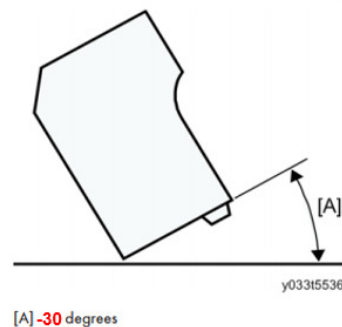
Step 4.

4. Keep the projector at 20 degrees.
When the adjustment is successfully completed, the values changes from the default [0-0-2048].
(Example: See below)



Wrong

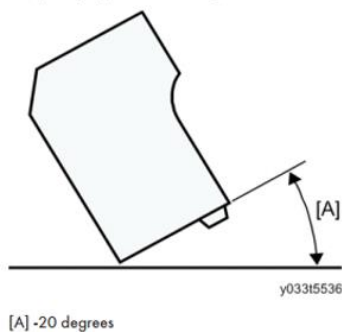
4. Keep the projector at **-30** degrees after removing the stand in the front of projector.



Correct

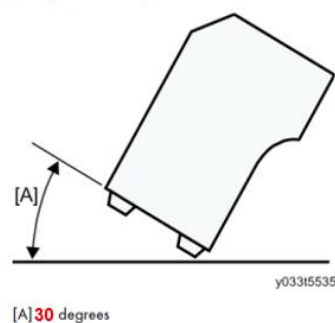
Step 7.

7. Keep the projector at -20 degrees after removing the stand in the front of projector.



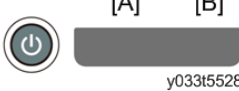
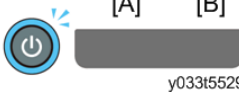
Wrong

7. Keep the projector at **30** degrees.
When the adjustment is successfully completed, the values changes from the default [0-0-2048].
(Example: See below)



Correct

5. Troubleshooting

Status of Indicator Lights	Trouble	Cause	Solution
<p>The projector does not turn on.</p>  <p>[A] Lamp [B] Temp</p>	<p>Standby power is not on.</p>	<p>There is a problem with the power supply or the main board.</p> <ul style="list-style-type: none"> AC power supply voltage is lower than the requirement. PSU failure. Main board failure. 	<ul style="list-style-type: none"> Check the AC power supply. Check the connector. Check the PSU. Check the main board.
 <p>[A] Lamp [B] Temp</p> <p>Flashing interval: 0.2 seconds</p>	<p>Hardware error</p> <p>Power went out during use.</p>	<p>There are problems with the main board.</p> <ul style="list-style-type: none"> Intake port, filter clogging AC power supply voltage is lower than the requirement. PSU failure. Main board failure. 	<p>Check the main board and the cable connections.</p> <ul style="list-style-type: none"> Check and clean the intake port and filter. Check the AC power supply. Check or replace the PSU Check or replace the main board. Check or replace the NW board (NW models only)