

Start Guide (Interactive Function)

RICOH PJ WX4141_{NI}

RICOH



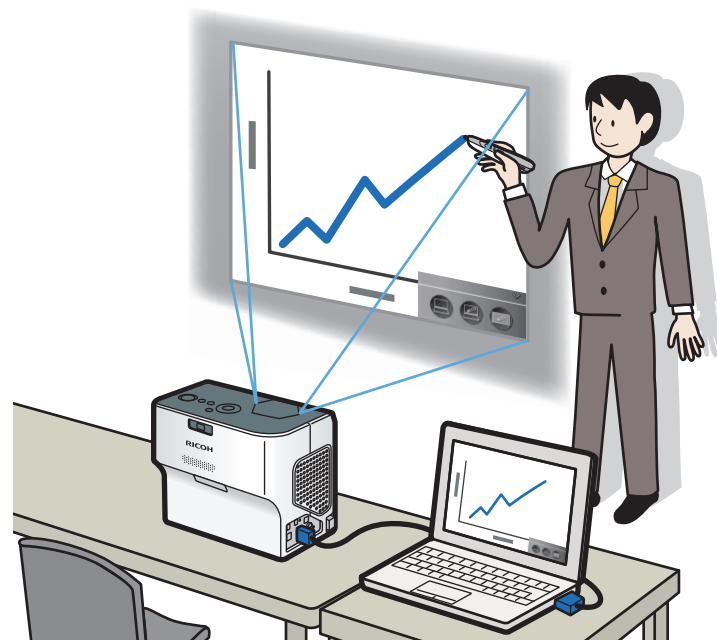
Y0367516

For safe and correct use, be sure to read the Safety Information in Read This First before using the machine. Some illustrations in this manual might be slightly different from the machine.

What is Interactive Function?

The Interactive Function allows you to operate a computer, doing such things as making notes or clicking on buttons, by manipulating the image of the computer's screen that is projected on the screen. The electronic pen can only be used while the projector is in Interactive Mode. For details about how to configure the projector, see "Preparations for Using the Interactive Function".

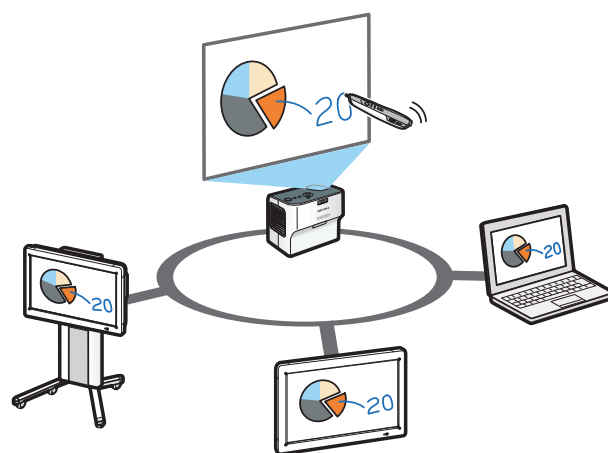
You can write and draw on a projected screen using the included software "RICOH PJ Interactive Software". For details about how to install RICOH PJ Interactive Software, see "Operating Instructions" . For details about how to use RICOH PJ Interactive Software, see "Operating Instructions (Interactive Function)" .



CZE022

Sharing the Whiteboard

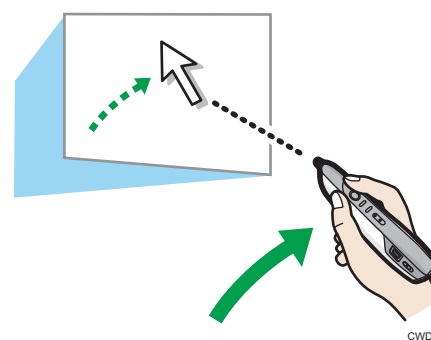
You can share the whiteboard with other devices connected via a network.



CWD088

Using the Electronic Pen as a Pointer

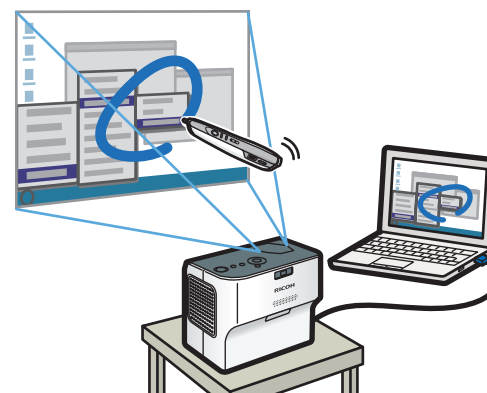
You can use the electronic pen as a pointer to point at the projected computer display.



CWD084

Writing on the Desktop Screen

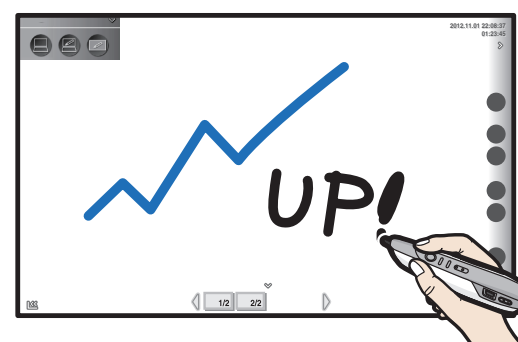
You can project a computer screen and write on the projected image. Anything you write can be saved on the computer.



CZE023

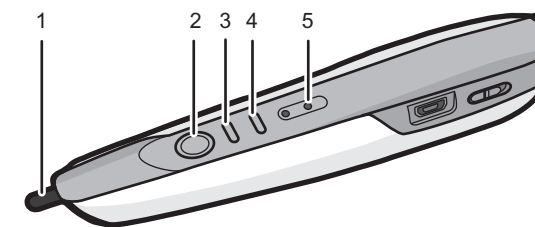
Writing Memos on the Screen

You can use the screen as a whiteboard for writing memos.



CWD055

Using the Electronic Pen

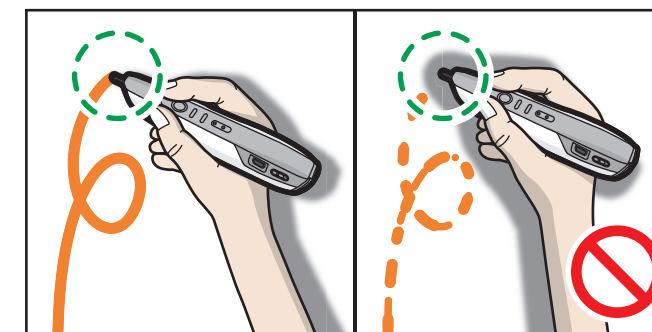


CZE025

1. Pen nib switch
Used to write, draw, and select operations on the projected screen.
2. Left button
Similar to the left button of a computer mouse.
3. Right button
Similar to the right button of a computer mouse.
4. Point adjustment button
Used to adjust the point position of the pen nib when the pen is held in a different way.
5. Communication indicator
Indicates the communication status of the electronic pen. This indicator flickers in red until the projector recognizes the electronic pen. When the projector recognizes the electronic pen, the indicator lights up in green or flickers rapidly.

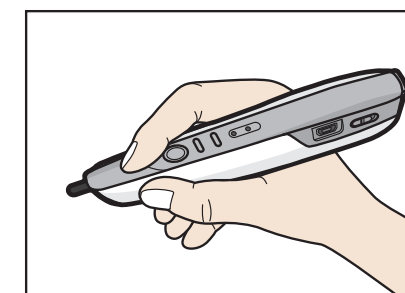
★ Important

- Operate the electronic pen so that the pen nib does not point toward a shadowed area.

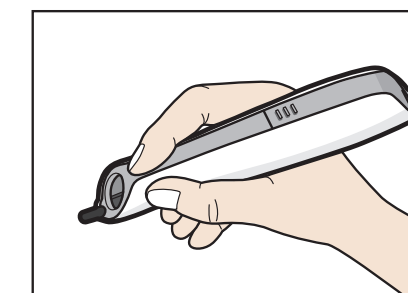


CWD014

- When the projector is installed on a table or the floor, hold the electronic pen as shown below.
- When the projector is installed on a wall or ceiling, hold the electronic pen upside down to eliminate the shadow that appears on the screen.

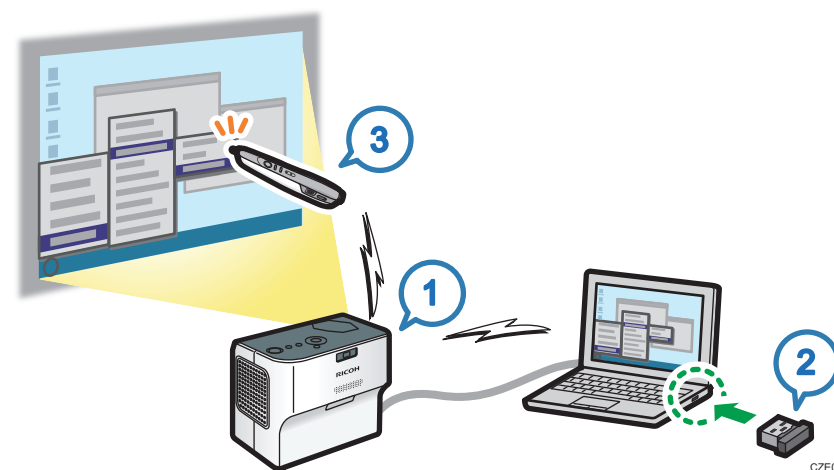


CZD017



CWD024

Preparations for Using the Interactive Function



1. Set Interactive Mode to [On].
2. Register the computer USB adapter to the projector.
3. Enable the projector to recognize the electronic pen.

Note

- The interactive function cannot be used when a screen is displayed on the Windows extended desktop.

The procedures explained in this manual are for how to use the projector with a remote control. You can also operate the menu screen of the projector from the projector's control panel.

1 Enabling Interactive Mode

❖ Preparation

We recommend disabling wireless LAN communication. Disable wireless LAN communication according to the following procedure.

- 1 Turn on the projector to project the screen.
- 2 Press the **Menu** (Menu) button.
- 3 Select [Network/USB Settings], and then press the **Enter** (Enter) button.
- 4 Select [Network Settings], and then press the **Enter** (Enter) button.
- 5 Select [LAN Common], and then press the **Enter** (Enter) button.
- 6 Select [Network Interface], and then press the **Enter** (Enter) button.
- 7 Select [Wired LAN] or [Disable], and then press the **Enter** (Enter) button.

- 8 Press the **Menu** (Menu) button.

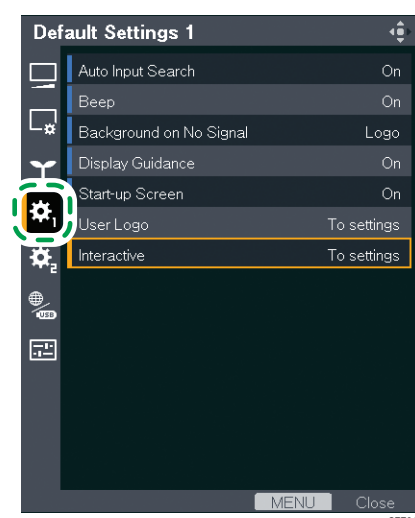
- 9 Select [Reflect], and then press the **Enter** (Enter) button.

- 10 Press the **Menu** (Menu) button to close the menu screen.

❖ Enabling Interactive Mode

- 1 Press the **Menu** (Menu) button.

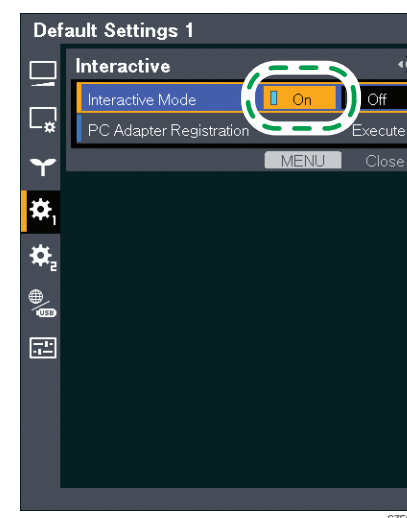
- 2 Select [Default Settings 1], and then press the **Enter** (Enter) button.



- 3 Select [Interactive], and then press the **Enter** (Enter) button.

- 4 Select [Interactive Mode], and then press the **Enter** (Enter) button.

- 5 Select [On], and then press the **Enter** (Enter) button.



2 Registering the Computer USB Adapter

⚠ Caution

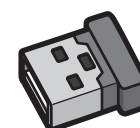
- Keep computer USB adapter out of reach of children. If a child accidentally swallows a computer USB adapter, consult a doctor immediately.

❖ Operating Environment of the Computer Using the Computer USB Adapter

Item	Specifications
Operating System	<ul style="list-style-type: none"> Windows XP Windows 7 Windows 8
USB port	<ul style="list-style-type: none"> USB Type A Do not use a USB hub.

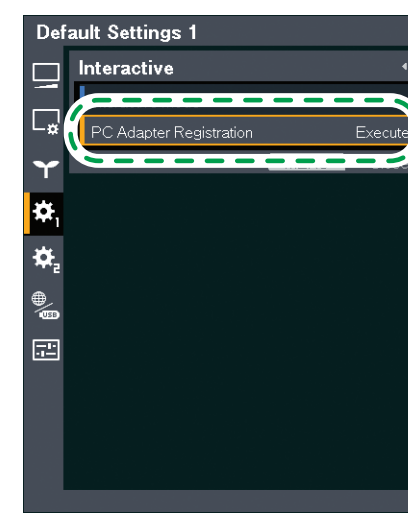
❖ Registering the Computer USB Adapter

- 1 Have a computer USB adapter at hand.

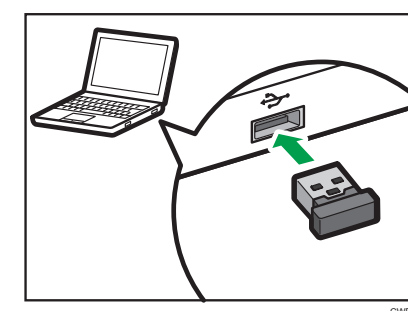


- 2 Connect the computer to the projector using an RGB cable or an HDMI cable.

- 3 Select [PC Adapter Registration], and then press the **Enter** (Enter) button.



- 4 Install the computer USB adapter into the computer.



• If registration succeeds

The message "Registration has completed." appears. The computer USB adapter flickers every two seconds. Press the **Enter** (Enter) button to close the message.

• If registration fails

Registration should complete in under 2 minutes. If it does not complete after 2 minutes, remove the USB adapter from the computer, and then insert it again.

- 5 Press the **Menu** (Menu) button twice to close the menu screen.

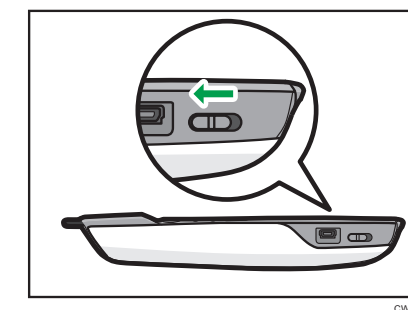
Note

- Once the computer USB adapter is registered to the projector, there is no need to register it again. You can use the computer USB adapter with any computer that is connected to the projector.
- Do not register computer USB adapters for multiple projectors at the same time. The computer USB adapter might not be registered correctly.

3 Enabling the Projector to Recognize the Electronic Pen

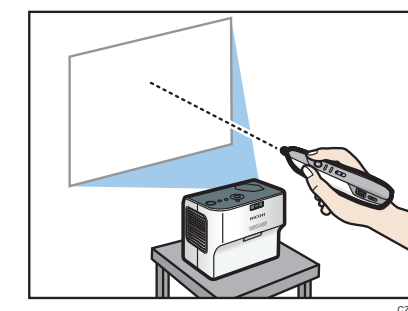
Once the projector recognizes the electronic pen, you can directly operate the computer display on the screen.

- 1 Turn the power switch of the electronic pen to [On].



The communication indicator on the electronic pen will then flicker.

- 2 Point the pen nib toward the projected screen.



• If registration succeeds

The projected computer screen pointer moves according to the movements of the electronic pen.

• If registration fails

- Check how you are holding the electronic pen.
- Check that the pen nib is not pointing at a shadow.

Note

- If the interactive function setup fails, see "When You Cannot Use the Interactive Function", Operating Instructions. You can write and draw on a projected screen using the included software "RICOH PJ Interactive Software". For details about how to install RICOH PJ Interactive Software, see "Operating Instructions". For details about how to use RICOH PJ Interactive Software, see "Operating Instructions (Interactive Function)".