

**Reissued: 20-Dec-13**

Model: Soleil-PJ1b	Date: 20-Feb-12	No.: RY011001i
--------------------	-----------------	----------------

**RTB Reissue**

The items in bold italics have been corrected.

Subject: Firmware Release Note: SYSTEM:SOL-1		Prepared by: A. Iwaori	
From: NA Support Sect, Solution Support Dept.			
Classification:	<input type="checkbox"/> Troubleshooting <input type="checkbox"/> Mechanical <input type="checkbox"/> Paper path <input type="checkbox"/> Product Safety	<input type="checkbox"/> Part information <input type="checkbox"/> Electrical <input type="checkbox"/> Transmit/receive <input checked="" type="checkbox"/> Other (Firmware)	<input type="checkbox"/> Action required <input type="checkbox"/> Service manual revision <input type="checkbox"/> Retrofit information <input checked="" type="checkbox"/> Tier 2

This RTB has been issued to announce the firmware release information for the **SYSTEM: SOL-1**.

Version	Program No.	Effective Date	Availability of RFU
<b>001.208</b>	<b>Y0125955N</b>	<b>August 2013 production</b>	<b>Not available</b>
001.207	Y0125955M	April 2013 production	Not available
001.205	Y0125955L	February 2013 production	Not available
001.204	Y0125955K	January 2013 production	Not available
001.203	Y0125955J	November 2012 production	Not available
001.201	Y0125955H	September 2012 production	Not available
001.100	Y0125955F	April 2012 production	Not available
001.003	Y0125955E	March 2012 production	Not available
001.002	Y0125955D	February 2012 production	Not available
001.001	Y0125955C	1st Mass production	Not available

**Note: Definition of Availability of RFU via @Remote**
**"Available":** The firmware can be updated via RFU or SD card.

**"Not available":** The firmware can only be updated via SD card.

Version	Modified Points or Symptom Corrected
<b>001.208</b>	<b><i>This package version includes the following firmware.</i></b> <b><i>Package: 001.208</i></b> <b><i>Main: 10050700</i></b> <b><i>Network/USB Function: 001.207</i></b> <b><i>Energy Saving: 001.208</i></b>  <b><i>Error Correction</i></b> <b><i>The machine freezes at start-up.</i></b>
001.207	This package version includes the following firmware. Package: 001.207 Main: 10050700 Network/USB Function: 001.207 Energy Saving: 001.206  Error Correction: 1. Space characters cannot be used in an SSID. 2. If a slideshow is displayed for too long, it will stop.

**Reissued: 20-Dec-13**

Model: Soleil-PJ1b	Date: 20-Feb-12	No.: RY011001i
--------------------	-----------------	----------------

Version	Modified Points or Symptom Corrected
001.205	<p>This package version includes the following firmware.</p> <p>Package: 001.205 Main: 10050700 Network/USB Function: 001.203 Energy Saving: 001.204</p> <p>Error Correction: An output error occurs with the PAL signal (video input).</p>
001.204	<p>This package version includes the following firmware.</p> <p>Package: 001.204 Main: 10040700 Network/USB Function: 001.203 Energy Saving: 001.204</p> <p>Fixed: @Remote communication error.</p>
001.203	<p>This package version includes the following firmware.</p> <p>Package: 001.203 Main: 10040700 Network/USB Function: 001.203 Energy Saving: 001.202</p> <p>Fixed:</p> <ol style="list-style-type: none"> <li>1. After enabling DHCP and rebooting the projector, the projector will correctly acquire an IP address from DHCP, but the DHCP setting will be shown on the operation panel as "disabled".</li> <li>2. The wireless LAN card drops packets that contain both a MAC unicast destination address and IP broadcast destination. This could result in problems such as the inability to acquire an IP address from certain DHCP relay agents.</li> </ol>
001.201	<p>This package version includes the following firmware.</p> <p>Package: 001.201 Main: 10040700 Network/USB Function: 001.201 Energy Saving: 001.100</p> <p>Symptom corrected: Unstable audio while playing back video of certain formats from a USB storage device.</p> <p>Other changes: Supports the Soleil-PJ1d</p>

**Reissued: 20-Dec-13**

Model: Soleil-PJ1b	Date: 20-Feb-12	No.: RY011001i
--------------------	-----------------	----------------

Version	Modified Points or Symptom Corrected
001.100	<p>This package version includes the following firmware.</p> <p>Package: 001.100 Main: 10020700 Network/USB Function: 001.100 Energy Saving IO: 001.100</p> <p>Fixed:</p> <ol style="list-style-type: none"> <li>1. When a wired cable is inserted into the device, the simple 1:1 connection set up will be terminated if the Network Interface setting = "Wired LAN Priority".</li> <li>2. If the total amount of data transmitted during a presentation exceeded 16GB, the connection with the projector was lost and had to be re-established manually.</li> </ol> <p>Others:</p> <ol style="list-style-type: none"> <li>1. Simple 1:1 connection takes less time to establish.</li> <li>2. Improved USB memory detection.</li> </ol>
001.003	<p>This package version includes the following firmware.</p> <p>Package: 001.003 Main: 10020700 Network/USB Function: 001.002 Energy Saving IO: 001.003</p> <p>Fixed:</p> <ol style="list-style-type: none"> <li>1. The device discards IP packets smaller than 46 bytes. This sometimes resulted in lost wireless connectivity.</li> <li>2. The device might display the status "Connected" even though it has failed to authenticate with an access point.</li> </ol> <p>Others:</p> <p>If the current display language is not English, the word "Languages" will appear in English next to the language menu title. This is so the user will always be able to locate the language setting.</p>
001.002	<p>Fixed:</p> <p>Wireless network connections suddenly dropped or cannot be established after simple 1:1 connection is canceled.</p> <p>Other:</p> <p>Changes to the wording in the "Simple 1:1 Connection".</p>
001.001	Initial release

Model: <b>Soleil-PJ1a</b>	Date: 26-Apr-12	No.: RY011002
---------------------------	-----------------	---------------

Subject: Firmware Release Note: FW Update		Prepared by: S. Ishizu	
From: 2nd Tech Service Sect., MFP/Printer Tech Service Dept.			
Classification:	<input type="checkbox"/> Troubleshooting <input type="checkbox"/> Mechanical <input type="checkbox"/> Paper path <input type="checkbox"/> Product Safety	<input type="checkbox"/> Part information <input type="checkbox"/> Electrical <input type="checkbox"/> Transmit/receive <input checked="" type="checkbox"/> Other (Firmware)	<input type="checkbox"/> Action required <input type="checkbox"/> Service manual revision <input type="checkbox"/> Retrofit information <input checked="" type="checkbox"/> Tier 2

This RTB has been issued to announce the firmware release information for the **FW Update**.

Version	Program No.	Effective Date	Availability of RFU
1.0.0.0	Y0119101	-	Not available

**Note: Definition of Availability of RFU via @Remote**

“Available”: The firmware can be updated via RFU or SD card.

“Not available”: The firmware can only be updated via SD card.

Version	Modified Points or Symptom Corrected
1.0.0.0	Initial release

**Reissued: 12-Apr-16**

Model: <b>Soleil-PJ1a/Soleil-PJ1b/Soleil-PJ2/ Altair-PJ1/ Altair-PJ2/Soleil-PJ2.5</b>	Date: 19-Oct-12	No.: RY011003f
---	-----------------	----------------

**RTB Reissue**

The items in bold italics have been corrected.

Subject: Firmware Release Note: Backup Tool		Prepared by: A. Iwaori	
From: VC Products Support Sec., Solution Support Dept.			
Classification:	<input type="checkbox"/> Troubleshooting <input type="checkbox"/> Mechanical <input type="checkbox"/> Paper path <input type="checkbox"/> Product Safety	<input type="checkbox"/> Part information <input type="checkbox"/> Electrical <input type="checkbox"/> Transmit/receive <input checked="" type="checkbox"/> Other (Firmware)	<input type="checkbox"/> Action required <input type="checkbox"/> Service manual revision <input type="checkbox"/> Retrofit information <input checked="" type="checkbox"/> Tier 2

This RTB has been issued to announce the firmware release information for the **Backup Tool**.

Version	Program No.	Effective Date	Availability of RFU
<b>1.7.0.0</b>	<b>Y0119100G</b>	-	<b>Not available</b>
1.6.0.0	Y0119100F	-	Not available
1.5.0.0	Y0119100E	-	Not available
1.4.0.0	Y0119100D	-	Not available
1.3.0.0	Y0119100C	-	Not available
1.2.0.0	Y0119100B	-	Not available
1.1.0.0	Y0119100A	-	Not available

**Note: Definition of Availability of RFU via @Remote**
**"Available":** The firmware can be updated via RFU or SD card.

**"Not available":** The firmware can only be updated via SD card.

Version	Modified Points or Symptom Corrected
<b>1.7.0.0</b>	<b>1) Additional Model Information</b> <b>None.</b>  <b>2) Specification Changes</b> <b>Able to obtain and display logs related to mercury bridge.</b>  <b>3) Error Corrections</b> <b>None.</b>
1.6.0.0	1) Additional Model Information The following projector is now supported: Soleil PJ2.5  2) Specification Changes None.  3) Error Corrections None.
1.5.0.0	Additional Model Information: - Altair PJ2 models have been added.  Specification Changes: The following functions have been added or changed for Altair PJ2:

**Reissued: 12-Apr-16**

Model: <b>Soleil-PJ1a/Soleil-PJ1b/Soleil-PJ2/ Altair-PJ1/ Altair-PJ2/Soleil-PJ2.5</b>		Date: 19-Oct-12	No.: RY011003f
Version	Modified Points or Symptom Corrected		
	<ul style="list-style-type: none"><li>- Added functionality for obtaining service status information (Service Status Tool).</li><li>- The tool automatically changes the projector's "Eco mode" settings to "Active stand-by mode" so that the tool can be executed without changing the setting in advance.</li></ul>		
1.4.0.0	Additional Supported Model: Soleil-PJ2		
1.3.0.0	Specification Change: Supports the Backup and Restore functions on the following versions of Altair-PJ1 firmware: Main: Ver. 1008220400 Network USB: Ver. 101300 ECO IO: Ver. 101400		
1.2.0.0	Additional Model Information: Support for the Altair-PJ1 was added.		
1.1.0.0	Initial release		

**Reissued: 27-Jan-16**

Model: <b>Soleil-PJ1a/ Soleil-PJ1b/ Soleil-PJ2/ Soleil-PJ2.5/Altair-PJ1/ Altair-PJ2</b>	Date: 21-Jul-12	No.: RY011004c
---	-----------------	----------------

**RTB Reissue**

The items in bold italics have been corrected or added.

Subject: Firmware Release Note: USB to UART Bridge Virtual COM Port driver		Prepared by: A. Iwaori	
From: VC Products Support Sec., Solution Support Dept.			
Classification:	<input type="checkbox"/> Troubleshooting <input type="checkbox"/> Mechanical <input type="checkbox"/> Paper path <input type="checkbox"/> Product Safety	<input type="checkbox"/> Part information <input type="checkbox"/> Electrical <input type="checkbox"/> Transmit/receive <input checked="" type="checkbox"/> Other (Driver)	<input type="checkbox"/> Action required <input type="checkbox"/> Service manual revision <input type="checkbox"/> Retrofit information <input checked="" type="checkbox"/> Tier 2

This RTB has been issued to announce the firmware release information for the **USB to UART Bridge Virtual COM Port driver**.

Version	Program No.	Effective Date	Availability of RFU
1.0.0.0	Y0119102	-	Not available

**Note: Definition of Availability of RFU via @Remote**
**"Available":** The firmware can be updated via RFU or SD card.

**"Not available":** The firmware can only be updated via SD card.

Version	Modified Points or Symptom Corrected
1.0.0.0	<p><b><i>[Modifications made:]</i></b></p> <p><b><i>2015/02/02</i></b></p> <p><b><i>Additional support for Altair PJ2 has been included. No other changes have been made to the application.</i></b></p> <p><b><i>2016/01/20</i></b></p> <p><b><i>Additional support for Soleil PJ2.5 has been included. No other changes have been made to the application.</i></b></p> <p><b><i>---</i></b></p> <p>Initial Release</p>

**Reissued: 08-May-13**

Model: Soleil-PJ1a	Date: 25-Jul-12	No.: RY011005a
--------------------	-----------------	----------------

**RTB Reissue**

The items in bold italics have been corrected.

Subject: Firmware Release Note: MAIN:SOL-1A		Prepared by: S. Ishizu	
From: NA Support Sect, Solution Support Dept.			
Classification:	<input type="checkbox"/> Troubleshooting <input type="checkbox"/> Mechanical <input type="checkbox"/> Paper path <input type="checkbox"/> Product Safety	<input type="checkbox"/> Part information <input type="checkbox"/> Electrical <input type="checkbox"/> Transmit/receive <input checked="" type="checkbox"/> Other (Firmware)	<input type="checkbox"/> Action required <input type="checkbox"/> Service manual revision <input type="checkbox"/> Retrofit information <input checked="" type="checkbox"/> Tier 2

This RTB has been issued to announce the firmware release information for the **MAIN: SOL-1A**.

Version	Program No.	Effective Date	Availability of RFU
<b>10050700</b>	<b>Y0115951H</b>	<b>February 2013 production</b>	<b>Not available</b>
10040700	Y0115951G_001	-	Not available

**Note: Definition of Availability of RFU via @Remote**
**"Available":** The firmware can be updated via RFU or SD card.

**"Not available":** The firmware can only be updated via SD card.

Version	Modified Points or Symptom Corrected
<b>10050700</b>	<b><i>Fixed:</i></b> <b><i>An output error occurs with the PAL signal (video input).</i></b>
10040700	<b><i>Others:</i></b> If the current display language is not English, the word "Languages" will appear in English next to the language menu title.



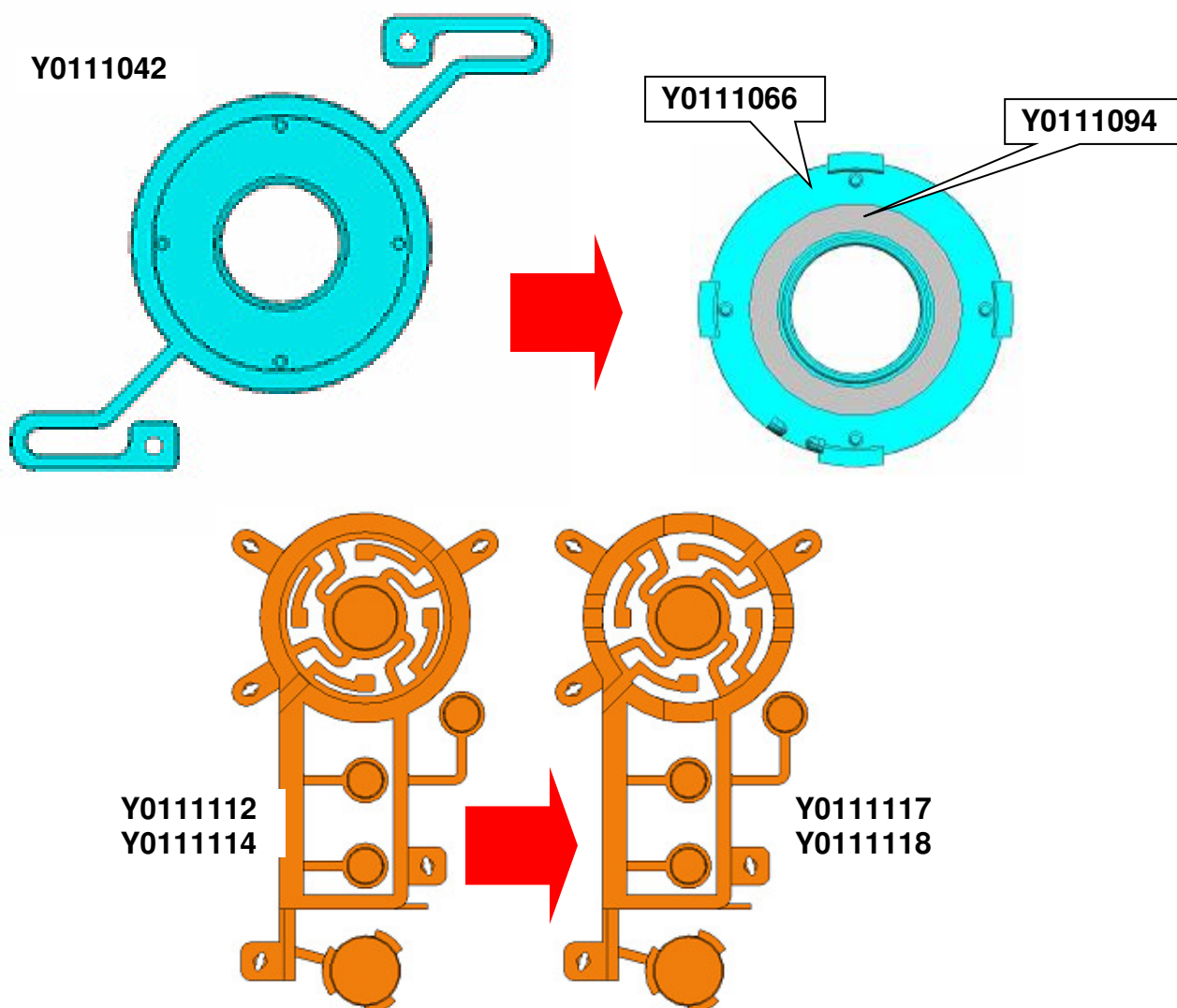
Model: Soleil-PJ1		Date: 28-Sep-12	No.: RY011006
Subject: Soleil-PJ1 KEY		Prepared by: S.Ishizu	
From: 2nd Tech Service Sect., MFP/P Tech Service Dept.			
Classification:	<input type="checkbox"/> Troubleshooting <input type="checkbox"/> Mechanical <input type="checkbox"/> Paper path <input type="checkbox"/> Product Safety	<input checked="" type="checkbox"/> Part information <input type="checkbox"/> Electrical <input type="checkbox"/> Transmit/receive <input type="checkbox"/> Other (     )	<input type="checkbox"/> Action required <input type="checkbox"/> Service manual revision <input type="checkbox"/> Retrofit information <input type="checkbox"/> Tier 2

Old part number	New part number	Description	Q'ty	Int	Page	Index	Note
Y0111042	Y0111066	KEY:SUB:OPERATION SUB-UNIT	1	X/O	U001_S002	10	A/B
	Y0111094	CUSHION:KEY:SUB	1		U001_S002		A/B
Y0111112	Y0111117	KEY:MAIN:PRINTING:EXP	1	X/O	U001_S002	20	A
Y0111114	Y0111118	KEY:MAIN:PRINTING:CHN	1	X/O	U001_S002	19	B

**Change:** The shape of the part below was changed.

**Reason:** To improve usability.

**Important:** Parts marked "A/B" in the table above must be replaced **together as a set**.



**Reissued:12-Nov-12**

Model: Soleil-PJ1a/b/d	Date: 29-Oct-12	No.: RY011007b
------------------------	-----------------	----------------

## **RTB Reissue**

*The items in bold italics have been corrected.*

Subject: Release of Back-up/Restore Tool		Prepared by: Shingo Ishizu	
From: 2nd Tech Service Sect., MFP/P Tech Service Dept.			
Classification:	<input type="checkbox"/> Troubleshooting <input type="checkbox"/> Mechanical <input type="checkbox"/> Paper path <input type="checkbox"/> Product Safety	<input type="checkbox"/> Part information <input type="checkbox"/> Electrical <input type="checkbox"/> Transmit/receive <input checked="" type="checkbox"/> Other (Release)	<input type="checkbox"/> Action required <input type="checkbox"/> Service manual revision <input type="checkbox"/> Retrofit information <input checked="" type="checkbox"/> Tier 2

### Information about the Release of the “Back-up/Restore Tool”

- The “Back-up/Restore Tool” has been released. This RTB gives an overview of the tool and explains how to use it.
- If you do not follow the procedures described in this RTB, wall-mount projection will not work correctly.

#### 1. What you can do with the Back-up/Restore Tool

- Data Backup and Restore  
You can download some of the data stored in the main board and also restore it.
- ***Continual use of @Remote without re-registration***  
***Because the machine serial number is backed up, you do not need to re-register the device with @Remote after replacing the main board. Simply restore the data (which contains the serial number) to the new board and reconfigure the passwords for the network settings.***

***Note: The @Remote Center will use the serial number to recognize the device, but the passwords for the customer’s network settings need to be re-configured. This is because this tool does not back up any password data.***

- Keystone Backup, Restore, and Manual Input  
You can download and restore keystone settings stored in the main board.  
You can also input the keystone settings manually.
- **Kitting Number Setup**  
**The Kitting Number is used to switch from the normal model (PJ1b) to the wall-mounted model (PJ1d). If you do not do this procedure when switching, the PJ1d will not work correctly.**

**Reissued:12-Nov-12**

Model: Soleil-PJ1a/b/d	Date: 29-Oct-12	No.: RY011007b
------------------------	-----------------	----------------

## 2. When to use this tool

This tool is mainly used when the main board is replaced. The tool is used to back up the data stored in the old board, and then to restore this data to the new board.

### *Data that is backed up and restored with this tool:*

<i>Data</i>	<i>Remarks</i>
<b>User settings</b>	<b>Adjustable settings only*</b>
<b>Network settings</b>	<b>Adjustable settings only*</b>
<b>C/W (Color Wheel) index delay</b>	
<b>KeyStone Calibration data</b>	
<b>Sub contrast</b>	
<b>Lamp ON time</b>	
<b>Eco time ratio</b>	
<b>Lamp reset count</b>	
<b>Machine serial No.</b>	

*\* This tool does not back up any password data.*

If the restore is successful, you do not need to do the following adjustments/**operations**. For details, refer to the Service Manual.

- Color wheel index delay
- Keystone Calibration
- Sub Contrast
- **@Remote re-registration**

Reissued:12-Nov-12

Model: Soleil-PJ1a/b/d	Date: 29-Oct-12	No.: RY011007b
------------------------	-----------------	----------------

## 3. How to use the Tool

### 3-1: Preparation

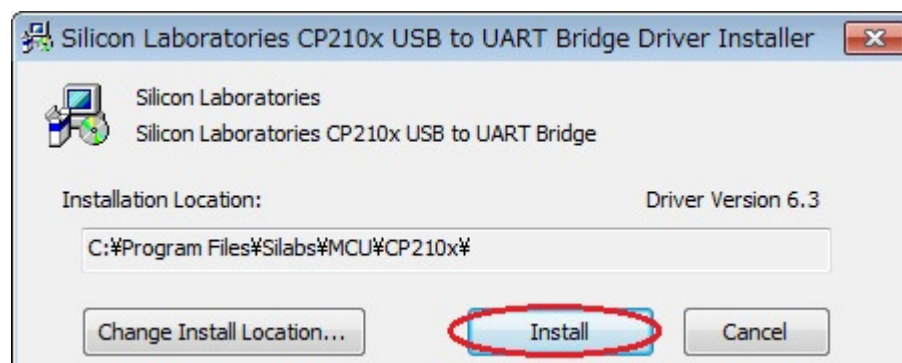
#### Download the file

1. Download the "Backup Tool" from the download site.
2. Unpack the file, which contains the following two files:
  - SoleilBackupRestre.EXE
  - USB-Serial\_Driver\_XP-Vistra-7.EXE
  -

名前	更新日時	種類	サイズ
 SoleilBackupRestore.EXE	2011/11/18 10:11	アプリケーション	234 KB
 USB-Serial_Driver_XP-Vista-7.EXE	2011/11/18 10:19	アプリケーション	3,436 KB
 Y0119100.exe	2012/04/13 11:38	アプリケーション	3,700 KB

#### Install the USB driver

1. Double-click the "USB-Serial\_Driver\_XP-Vista-7.EXE" file.
2. Open the folder [SiLabs\_XP-Vista-7]=>[SiLabs]=>[MCU]=>[CP210x]=>[Windows\_XP\_S2K3\_Vista\_7].
3. Double-click the "Windows\_XP\_S2K3\_Vista\_7.exe" file.
4. Push the "Install" button to go to the next step.



5. Push "OK" after "Installation completed successfully" is displayed.

Reissued:12-Nov-12

Model: Soleil-PJ1a/b/d	Date: 29-Oct-12	No.: RY011007b
------------------------	-----------------	----------------

## Perform configuration before connecting with the projector

Turn the unit on and configure the power-saving settings as shown below.

Soleil-PJ1a:

Soleil-PJ1b/d:

1. Turn the unit off.
2. Remove the service cover.



Service Cover

3. Connect the PC and projector with a USB cable.

USB Type A



USB Type mini-B



## Start the Tool

1. Unpack "SoleilBackupRestore.EXE", and then open the "SoleilBackupRestore" folder.
2. Double-click "SoleilBackupTool.exe".

名前	更新日時	種類	サイズ
SoleilBackupRestore_1.0.xls	2011/11/15 10:50	Microsoft Excel ...	58 KB
SoleilBackupTool.exe	2011/11/18 9:09	アプリケーション	420 KB

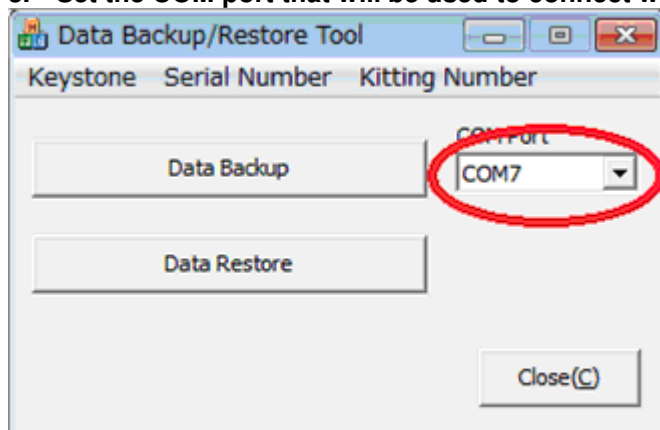
Reissued:12-Nov-12

Model: Soleil-PJ1a/b/d

Date: 29-Oct-12

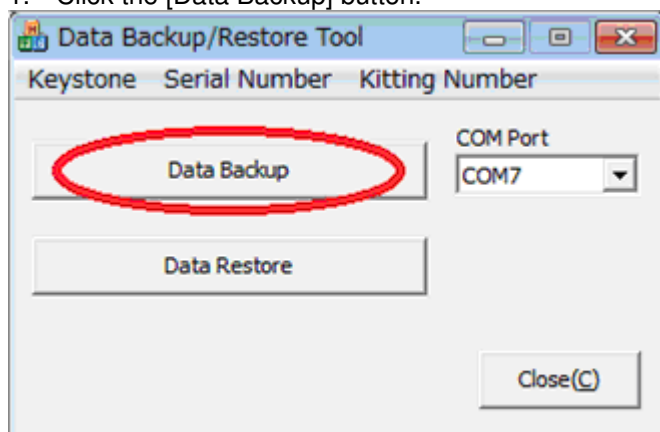
No.: RY011007b

### 3. Set the COM port that will be used to connect with the projector.



### 3-2: Data backup

1. Click the [Data Backup] button.



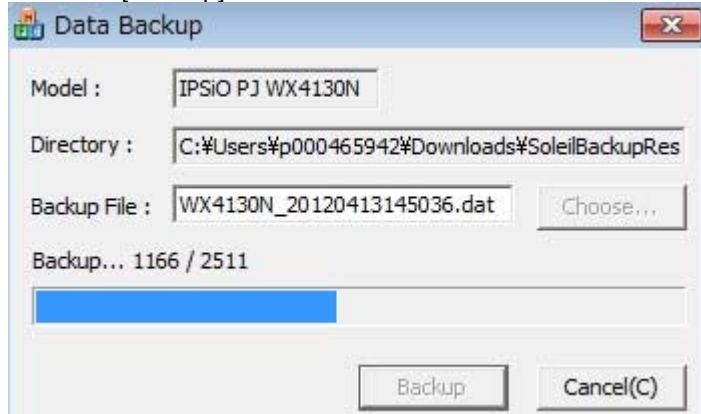
2. Click [Choose], and select the directory to which you want to save the file.



Reissued:12-Nov-12

Model: Soleil-PJ1a/b/d	Date: 29-Oct-12	No.: RY011007b
------------------------	-----------------	----------------

3. Click [Backup] to save. This takes about 3 to 4 minutes.

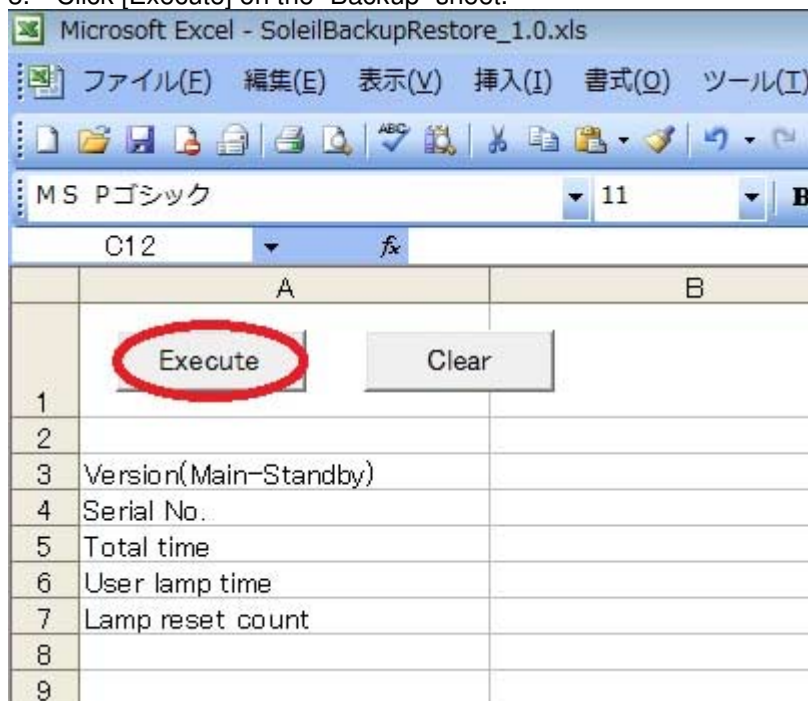


4. Click [OK] if the "Backup Complete" message is displayed.



**If you want to make sure whether the backup was successful:**

1. Double-click "SoleilBackupRestore\_.xls" inside the "SoleilBackupRestore" folder.
2. The macro function is required for activation.
3. Click [Execute] on the "Backup" sheet.





**Reissued:12-Nov-12**

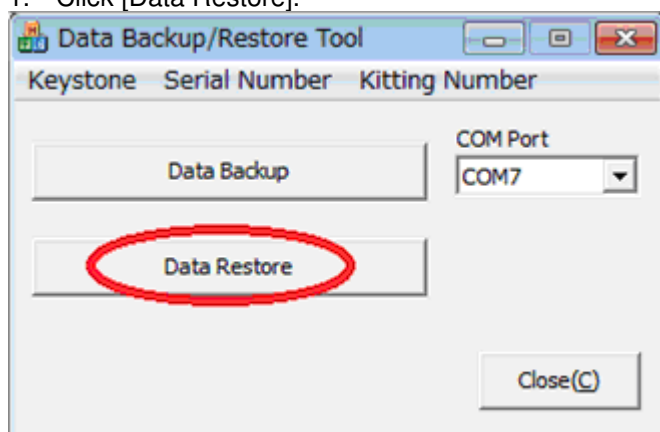
Model: Soleil-PJ1a/b/d	Date: 29-Oct-12	No.: RY011007b
------------------------	-----------------	----------------

4. Select the appropriate back-up file, such as "WX4130\_\*\*\*\*\*.dat". (\*\*\*: date information)



### 3-3: Data restore

1. Click [Data Restore].

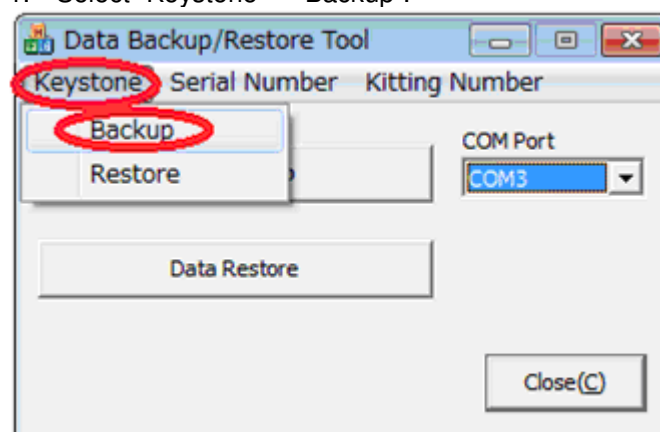


2. Click [Choose], and then select a backup file, such as "WX4130\_\*\*\*\*\*.dat".
3. Click [Restore].
4. After "Restore Complete" is displayed, click [OK].

## 4. How to use keystone backup, restore, and manual input

### 4-1: Keystone backup

1. Select "Keystone" – "Backup".

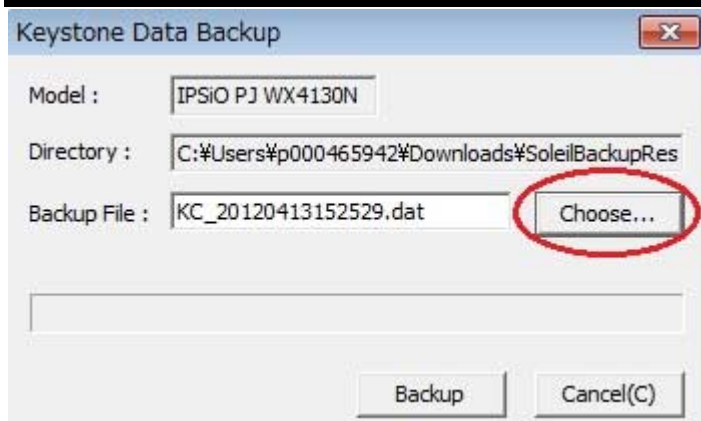


2. Click [Choose], and then select the directory to which you want to save the file.

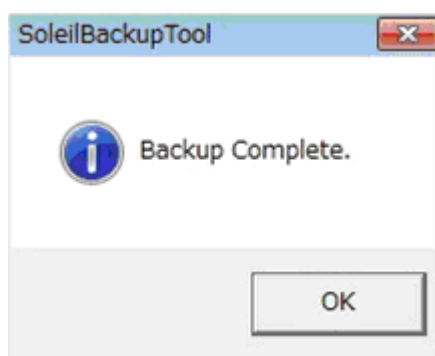


**Reissued:12-Nov-12**

Model: Soleil-PJ1a/b/d	Date: 29-Oct-12	No.: RY011007b
------------------------	-----------------	----------------

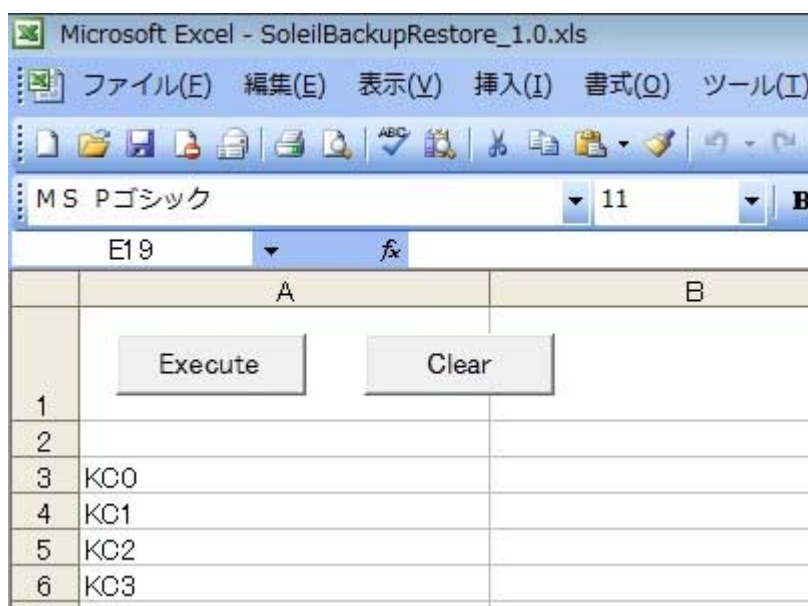


3. Click "Backup" to save. This process takes approx. 1 to 2 minutes.
4. Click [OK]



**If you want to make sure whether the backup was successful:**

1. Double-click "SoleilBackupRestore\_.xls" in the "SoleilBackupRestore" folder.  
**Important:** The Macro function must be activated.
2. Click [Execute] on the "Keystone" sheet.



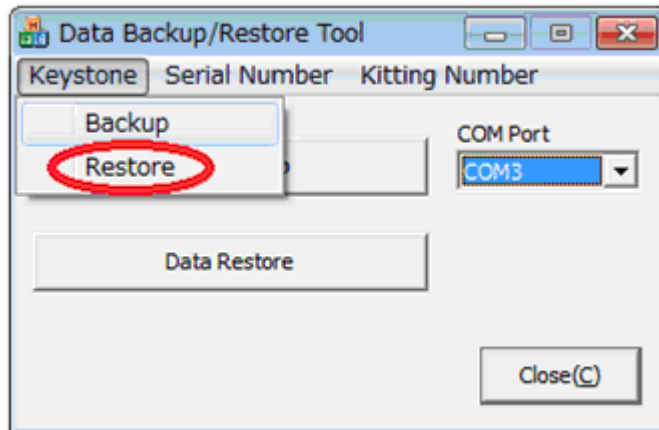
Reissued:12-Nov-12

Model: Soleil-PJ1a/b/d	Date: 29-Oct-12	No.: RY011007b
------------------------	-----------------	----------------

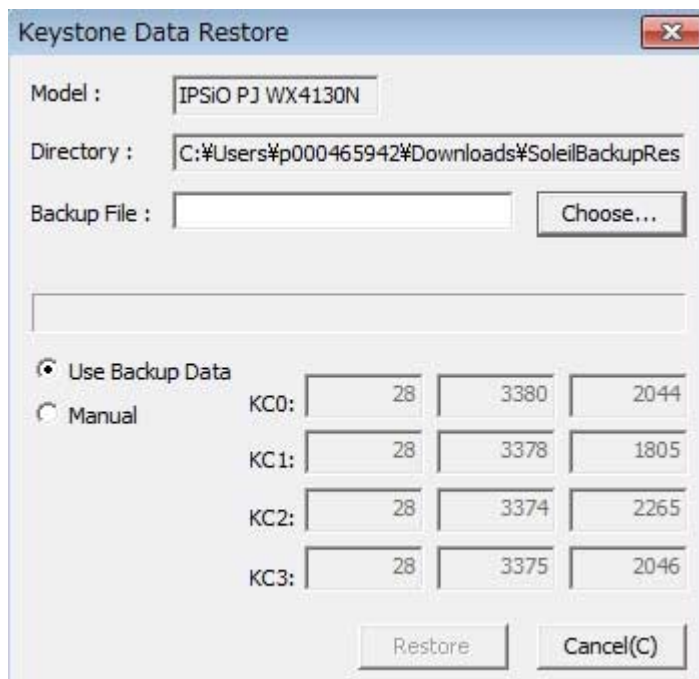
3. Select a backup file such as "WX4130\_\*\*\*\*\*.dat". (\*\*\*: date information).

## 4-2: Keystone Restore

1. Click ["Keystone"], and then ["Restore"].



2. Click [Use Backup Data], and then click [Choose] to select a backup file such as "KC\_\*\*\*\*\*.dat".



3. Click [Restore].

4. Click [OK] after "Restore Complete" is displayed.

Reissued:12-Nov-12

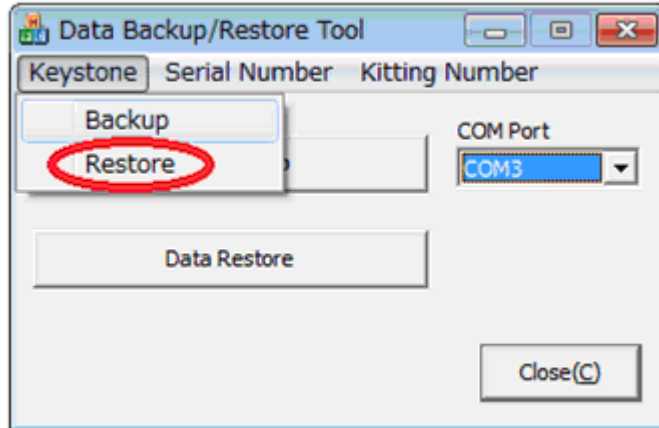
Model: Soleil-PJ1a/b/d

Date: 29-Oct-12

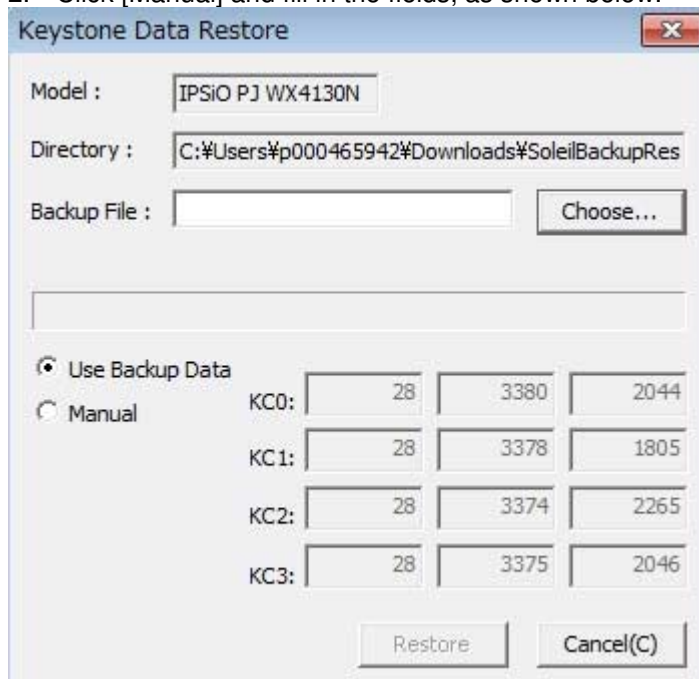
No.: RY011007b

## 4-3 Manual input (if the Keystone Data could not be backed up)

1. Click [Keystone] – [Restore].



2. Click [Manual] and fill in the fields, as shown below.



Data for manual input:

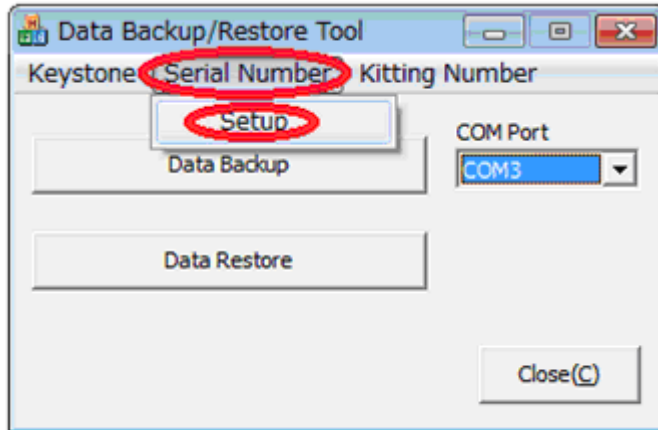
KC0: 25 - 3375 - 2048  
 KC1: 25 - 3375 - 1792  
 KC2: 25 - 3375 - 2304  
 KC3: 25 - 3375 - 2048

**Reissued:12-Nov-12**

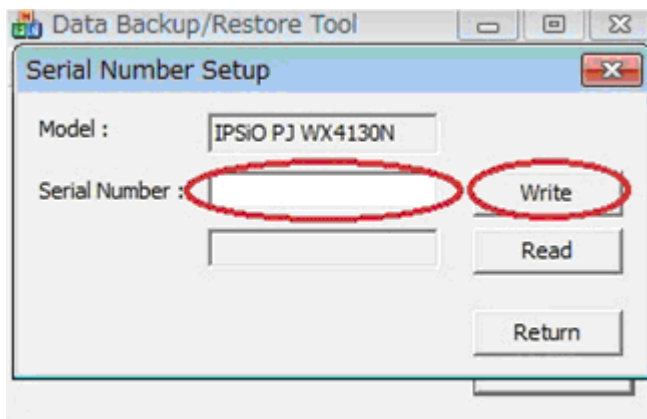
Model: Soleil-PJ1a/b/d	Date: 29-Oct-12	No.: RY011007b
------------------------	-----------------	----------------

## Serial number Setup

1. Click [Serial Number] – [Setup].



2. Input the serial number in the "Serial Number" field, and then click [Write] to write the serial number.



**Reissued:12-Nov-12**

Model: Soleil-PJ1a/b/d

Date: 29-Oct-12

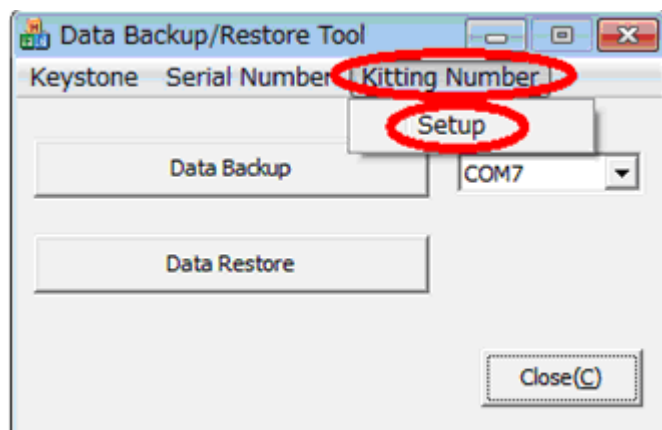
No.: RY011007b

## 5. How to use the Kitting Number feature (PJ1d only)

### Kitting Number Setup

First, before you begin this setup, turn the machine power ON. Otherwise, an error will occur.

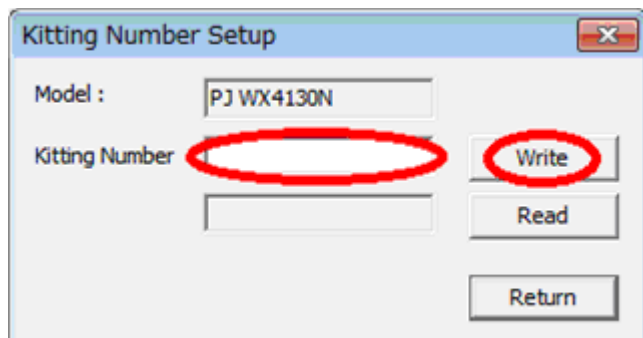
1. Click [Kitting Number] – [Setup].



2. Input the kitting data into the "Kitting Number" field, and then click "Write".

**Y01240\*\*\*\*\***

("\*" can be any number)



Model: <b>Altair-PJ1/Altair-PJ2/Soleil-PJ1b/ Soleil-PJ2/Soleil-PJ2.5</b>	Date: 27-Jan-16	No.: RY011008
--	-----------------	---------------

Subject: Firmware Release Note: QuickPack		Prepared by: A. Iwaori	
From: VC Products Support Sec., Solution Support Dept.			
Classification:	<input type="checkbox"/> Troubleshooting <input type="checkbox"/> Mechanical <input type="checkbox"/> Paper path <input type="checkbox"/> Product Safety	<input type="checkbox"/> Part information <input type="checkbox"/> Electrical <input type="checkbox"/> Transmit/receive <input checked="" type="checkbox"/> Other (Firmware)	<input type="checkbox"/> Action required <input type="checkbox"/> Service manual revision <input type="checkbox"/> Retrofit information <input checked="" type="checkbox"/> Tier 2

This RTB has been issued to announce the firmware release information for the **QuickPack**.

Version	Program No.	Effective Date	Availability of RFU
1001	PJSQPA_1001	-	Not available

**Note: Definition of Availability of RFU via @Remote**

“Available”: The firmware can be updated via RFU or SD card.

“Not available”: The firmware can only be updated via SD card.

Version	Modified Points or Symptom Corrected
1001	<p>1) Additional model information: Initial release.</p> <p>2) Specification changes: None.</p> <p>3) Error corrections: None.</p> <p>Remarks: QuickPack (Win. / Mac.) has been released via the following files.</p> <p>[Windows] QuickPack_WIN_V1000.zip Version: v1.0.0.0</p> <p>[Macintosh] QuickPack_MAC_V1102.zip Version: v1.1.0.2</p>