

## PJ WX4130N Firmware Update Guide

This guide explains how to update the PJ WX4130N firmware.

You can download the latest firmware from our Web site.

For detailed information about the projector's components and menu screens, see "Operating Instructions".

---

### Disclaimer

---

The manufacturer shall not be liable to the customer for any consequential, incidental or indirect damages (including, but not limited to, damages for loss of profits, business interruption or loss of business information, and the like) caused by failure of this software or loss of documents or data, nor for any other damages arising out of the use of this software, even if the customer has been advised of the possibility of such damages.

---

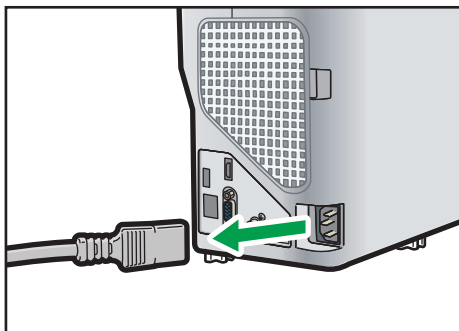
### Updating the Firmware

---

#### ★ Important

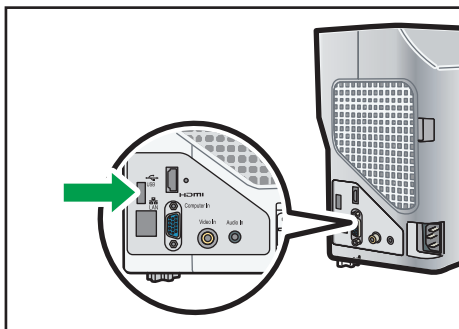
- The PJ WX4130N firmware cannot be used for any other products.
- Do not use the projector while updating the firmware. Doing so may cause the update to fail.
- Store the latest firmware file (.sfw) in the root directory of a USB memory device. Do not store any other firmware files in the root directory.

1. Copy the downloaded firmware file that has the .sfw extension to the root directory of a USB memory device.
2. Unplug the power cord from the AC In socket of the projector.



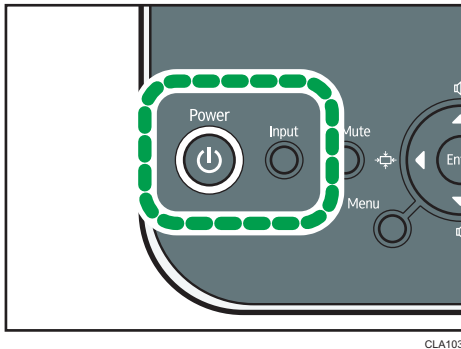
CLA101

3. Insert the USB memory device into the USB port on the projector.



CLB043

4. While pressing the [Power] button and the [Input] button, plug the power cord into the AC In socket of the projector.



Make sure that the power plug is plugged into a power outlet in advance.  
The projector beeps and starts updating the firmware.

5. Release your fingers from the buttons.

When the update completes, the projector beeps, and then the [Power] button, lamp indicator, and temp indicator each light up for a few seconds. Then the projector automatically restarts.

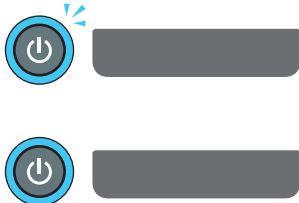


6. Unplug the power plug from the power outlet.

**Note**

- During the update, the [Power] button, lamp indicator, and temp indicator flash alternately. The firmware update may take up to 15 minutes.
- If the projector fails to update the firmware, it beeps at short intervals, and the [Power] button, lamp indicator, and temp indicator each flash for a few seconds. Then the projector automatically restarts. For details about the solutions for if the firmware update fails, see p. 3 "Troubleshooting".
- You can confirm the firmware version on the menu screens of the projector. Check if the firmware version displayed on the menu screens is the same version as the downloaded firmware.
  - Main FW Version: Display Status menu
  - Network/USB Function Firmware Version, Energy Saving IO Firmware Version: Network/USB Settings menu ⇒ Network Settings ⇒ Display Status
- Depending on the setting, the projector does not beep.

## Troubleshooting

If the firmware cannot be updated properly, check the following;

Status	Solutions
<p>The [Power] button, lamp indicator, and temp indicator do not flash. The projector is in standby mode or power on mode.</p> 	<p>The projector cannot find the firmware (.sfw) file for the update.</p> <ul style="list-style-type: none"> <li>• Make sure that the firmware file is stored in the root directory of the USB memory device.</li> <li>• If any other firmware files are stored in the root directory of the USB memory device, delete the unnecessary files.</li> <li>• The downloaded firmware file may be corrupted. Download the firmware file again.</li> </ul> <p>The latest firmware has already been installed. You can confirm the firmware version on the Display Status menu and the Network/USB Settings menu.</p>
<p>The [Power] button, lamp indicator, and temp indicator flash alternately for more than 15 minutes.</p> 	<p>The projector cannot detect the USB memory device.</p> <ul style="list-style-type: none"> <li>• Make sure the USB memory device is connected correctly. Turn the projector off, and then remove the USB memory device. Repeat the updating procedure from step 2.</li> <li>• Use a USB memory device supported by the projector. Turn the projector off, and then remove the USB memory device. Repeat the updating procedure from step 2.</li> </ul>
<p>The [Power] button, lamp indicator, and temp indicator flash simultaneously.</p> 	<p>The projector failed to update the firmware.</p> <ul style="list-style-type: none"> <li>• Turn the projector off, and then repeat the updating procedure from step 2. If you cannot update the firmware even though you retried the updating procedure, contact your service representative.</li> </ul>

### Note

- "🔦" means the indicator is flashing.