

Model		CD510R, Rex1040						Volt/Hz	Date of Modification	Serial Number	
Modified Article		Print Pressure Cam						C201 - 22		After Mar. '91	
Reason for Modification		To ensure the printing quality on the leading part									
								C201 - 24		After Mar. '91	
Draw No.	Old Parts No.		New Parts No.	Description	A.B.C.	Q'ty Used Old → New	Inter-change-ability	Part needed for replacement by new part		Parts Catalog	
					Rank			Part No.	Description	Index No.	Page
	C2005560		C2075560	Print Pressure Cam		1 → 1	X/O			7 3	19 7

Rank: A : Replace with new parts immediately.

B : Replace with new parts at time of repair.

C : Replace with new parts at time of overhaul.

Interchangeability:

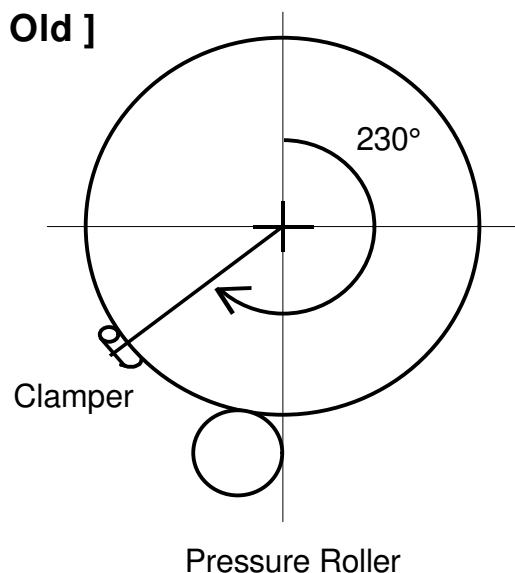
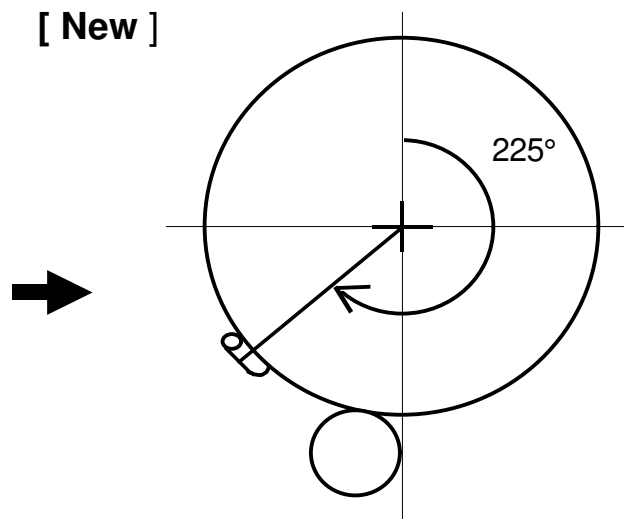
(1) When old and new parts are not mutually interchangeable, use additional parts or an assembly part as indicated in "Parts needed for replacement by new part" to install the new part.

(2) The mark to the left of the slash indicates whether the old part can be used in the new machine, and the mark to the right indicates whether the new part can be used in the old machine. x = Not interchangeable o = Interchangeable

**DETAILS OF MODIFICATION**

To ensure the printing quality on the leading part of the paper, the shape of the print pressure cam has been changed. If there is solid fill image on the leading part of the original and the printing speed is high (4 or 5 step), a low density horizontal band may appear about 30 millimeters from the leading edge of the print. This is caused by pressure roller bound when the pressure roller contacts the drum surface. The new print pressure cam applies the print pressure to the pressure roller 5 degrees faster in the drum rotation angle. (The pressure roller contacts the drum about 7 millimeters before the leading edge of the paper.)

NOTE: When the new print pressure cam is installed, the exit pawl timing is also changed. (The exit pawl approaches the drum 5 degrees faster in the drum rotation angle.) Therefore, it is necessary to make sure that the exit pawl does not contact the master clasper. (Readjust the exit pawl timing if necessary.)

**[ Old ]****[ New ]**

T. Ito, Manager  
Copier Technical Support

<b>Model</b>		SS810/830, Ges5110						<b>Volt/Hz</b>	<b>Date of Modification</b>	<b>Serial Number</b>	
<b>Modified Article</b>		Print Pressure Cam									
<b>Reason for Modification</b>		To ensure the printing quality on the leading part									
Draw No.	Old Parts No.		New Parts No.	Description	A.B.C.	Q'ty Used Old → New	Inter-change-ability	Part needed for replacement by new part		Parts Catalog	
					Rank			Part No.	Description	Index No.	Page
	C2005560		C2075560	Print Pressure Cam		1 → 1	X/O			19 5	25 9

Rank: A : Replace with new parts immediately. B : Replace with new parts at time of repair. C : Replace with new parts at time of overhaul.

Interchangeability:

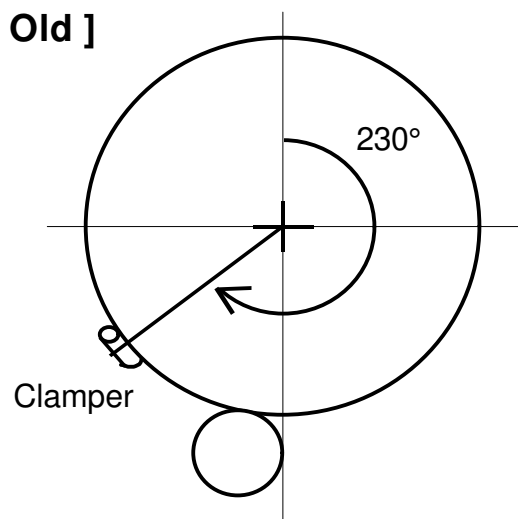
(1) When old and new parts are not mutually interchangeable, use additional parts or an assembly part as indicated in "Parts needed for replacement by new part" to install the new part.

(2) The mark to the left of the slash indicates whether the old part can be used in the new machine, and the mark to the right indicates whether the new part can be used in the old machine. x = Not interchangeable o = Interchangeable

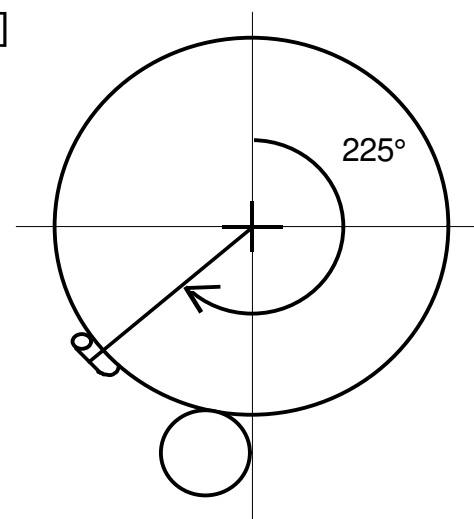
**DETAILS OF MODIFICATION**

To ensure the printing quality on the leading part of the paper, the shape of the print pressure cam has been changed. If there is solid fill image on the leading part of the original and the printing speed is high (4 or 5 step), a low density horizontal band may appear about 30 millimeters from the leading edge of the print. This is caused by pressure roller bound when the pressure roller contacts the drum surface. The new print pressure cam applies the print pressure to the pressure roller 5 degrees faster in the drum rotation angle. (The pressure roller contacts the drum about 7 millimeters before the leading edge of the paper.)

NOTE: When the new print pressure cam is installed, the exit pawl timing is also changed. (The exit pawl approaches the drum 5 degrees faster in the drum rotation angle.) Therefore, it is necessary to make sure that the exit pawl does not contact the master clasper. (Readjust the exit pawl timing if necessary.)

**[ Old ]**

Pressure Roller Contact

**[ New ]**

T. Ito, Manager  
Copier Technical Support

MODEL NAME	V/Hz	DESTINATION	JAPAN PRODUCTION	
			CODE	SERIAL NUMBER
RICOH SS830	120/60	USA, CANADA	C206 - 17	After March '91
GES 5110	120/60	USA, CANADA	C201 - 13	Service Parts Only
RICOH SS810	110/60	TAIWAN	C201 - 19	Service Parts Only
RICOH SS810	220	EUROPE, ASIA	C201 - 67	Service Parts Only
RICOH SS810	220	LATIN AMERICA	C201 - 68	After March '91

<b>Model</b>	SS810/830, Ges5110	<b>Volt/Hz</b>	<b>Date of Modification</b>	<b>Serial Number</b>
<b>Modified Article</b>	Ink Antechamber			
<b>Reason for Modification</b>	Vender change			

Due to vendor change, the ink antechamber has been changed. The interchangeability is O/O.

Old Part Number	New Part Number	Description	Page	Index
C2004810	C2134810	Ink Antechamber	33	31

T. Ito, Manager  
Copier Technical Support

MODEL NAME	V/Hz	DESTINATION	JAPAN PRODUCTION	
			CODE	SERIAL NUMBER
RICOH SS830	120/60	USA, CANADA	C206 - 17	Service Parts Only
GES 5110	120/60	USA, CANADA	C201 - 13	Service Parts Only
RICOH SS810	110/60	TAIWAN	C201 - 19	Service Parts Only
RICOH SS810	220	EUROPE, ASIA	C201 - 67	Service Parts Only
RICOH SS810	220	LATIN AMERICA	C201 - 68	Service Parts Only

<b>Model</b>	SS810/830, Ges5110	<b>Volt/Hz</b>	<b>Date of Modification</b>	<b>Serial Number</b>
<b>Modified Article</b>	Drum drive gear			
<b>Reason for Modification</b>	To increase durability			

To increase durability, the material of the drum drive gears (drum side and machine side) have been changed.

Old Part Number	New Part Number	Description	Interchangeability	Page	Index
C2012218	C2132218	Stud & Gear - 30T	X/O	7	1
C2032330	C2132330	Drum Drive Gear/Pulley Ass'y	X/O	7	36
C2034560	C2134560	Rear Drum Flange	X/O	35	41

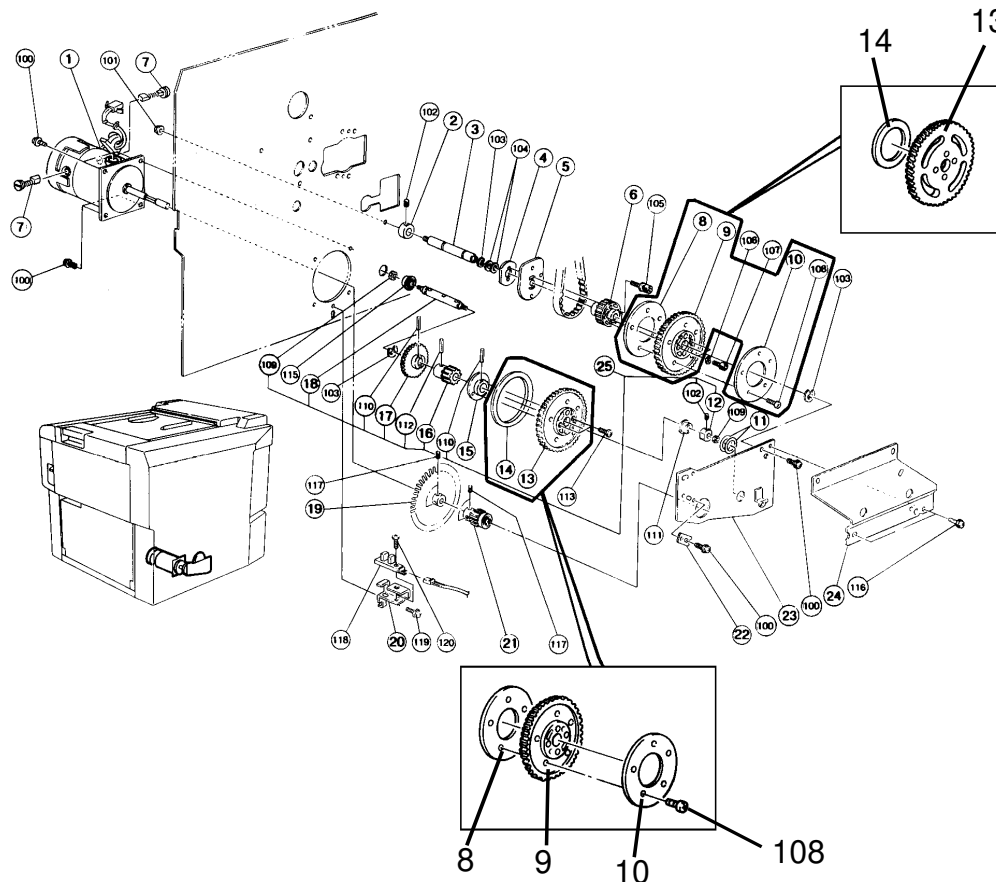
T. Ito, Manager  
Copier Technical Support



MODEL NAME	V/Hz	DESTINATION	JAPAN PRODUCTION	
			CODE	SERIAL NUMBER
RICOH SS830	120/60	USA, CANADA	C206 - 17	Service Parts Only
GES 5110	120/60	USA, CANADA	C201 - 13	Service Parts Only
RICOH SS810	110/60	TAIWAN	C201 - 19	Service Parts Only
RICOH SS810	220	EUROPE, ASIA	C201 - 67	Service Parts Only
RICOH SS810	220	LATIN AMERICA	C201 - 68	Service Parts Only

Model	SS810/830, Ges5110	Volt/Hz	Date of Modification	Serial Number
Modified Article	Parts Catalog			
Reason for Modification	Parts catalog correction			

Please correct the illustration on page 9 as shown below.



T. Ito, Manager  
Copier Technical Support

MODEL NAME	V/Hz	DESTINATION	JAPAN PRODUCTION	
			CODE	SERIAL NUMBER
RICOH SS830	120/60	USA, CANADA	C206 - 17	
GES 5110	120/60	USA, CANADA	C201 - 13	
RICOH SS810	110/60	TAIWAN	C201 - 19	
RICOH SS810	220	EUROPE, ASIA	C201 - 67	
RICOH SS810	220	LATIN AMERICA	C201 - 68	