

Model: PRIPORT OPAL/OPAL-MC		Date: 25-Dec-03	No: M-C593-001
Modified Article: New model Opal-MC information		Prepared by:	
From: Priport Service Planning Section		A. Yoshida	
Classification:	<input type="checkbox"/> Parts catalog correction <input type="checkbox"/> To facilitate assembly <input type="checkbox"/> Part standardization	<input type="checkbox"/> Vendor change <input type="checkbox"/> To improve reliability <input checked="" type="checkbox"/> Other (New machine information)	<input type="checkbox"/> To meet standards ()
Model Name:			
TC-II			

The Opal-MC was released in December 2003 as the successor to the Opal. The model code is the same as the code for the Opal (C593), but there are some parts that are not interchangeable with the Opal.

This bulletin details all of the components unique to the Opal-MC for servicing in the field. Please add the following to your Opal Parts Catalog, and refer to RTB #RC593001 for revisions made to the Service Manual due to minor changes applied to the Opal-MC.

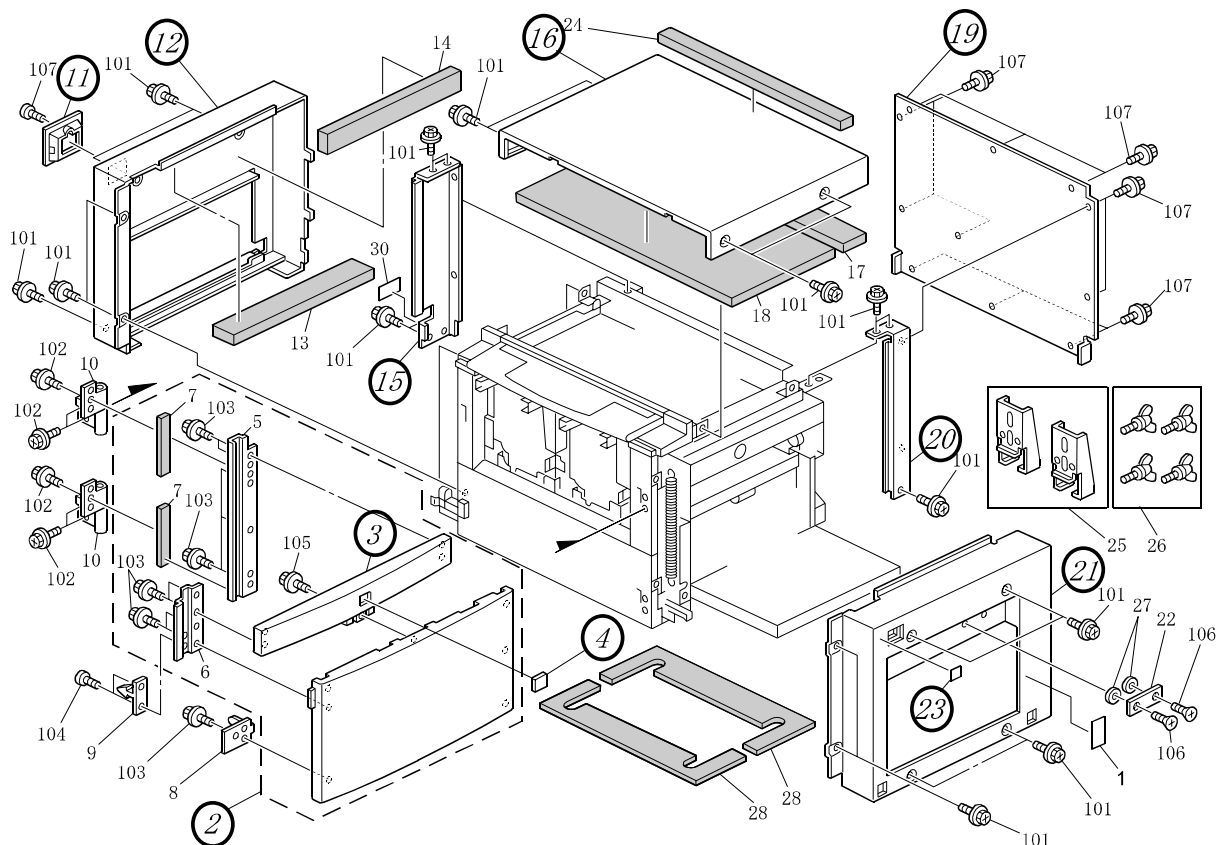
NOTE: The parts unique to the Opal-MC are millennium gray in color.

Model: PRIPORT OPAL/OPAL-MC

Date: 25-Dec-03

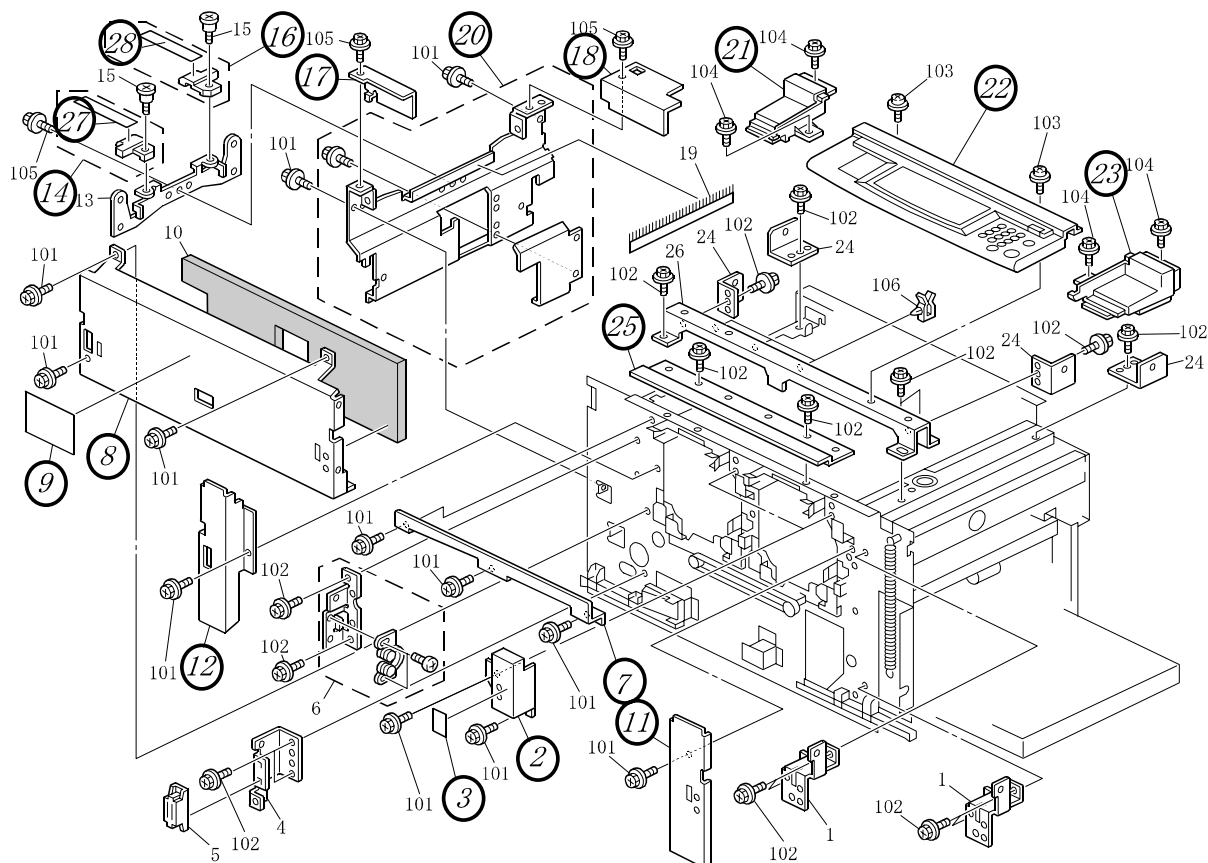
No: M-C593-001

1. Exterior 1 (C593)



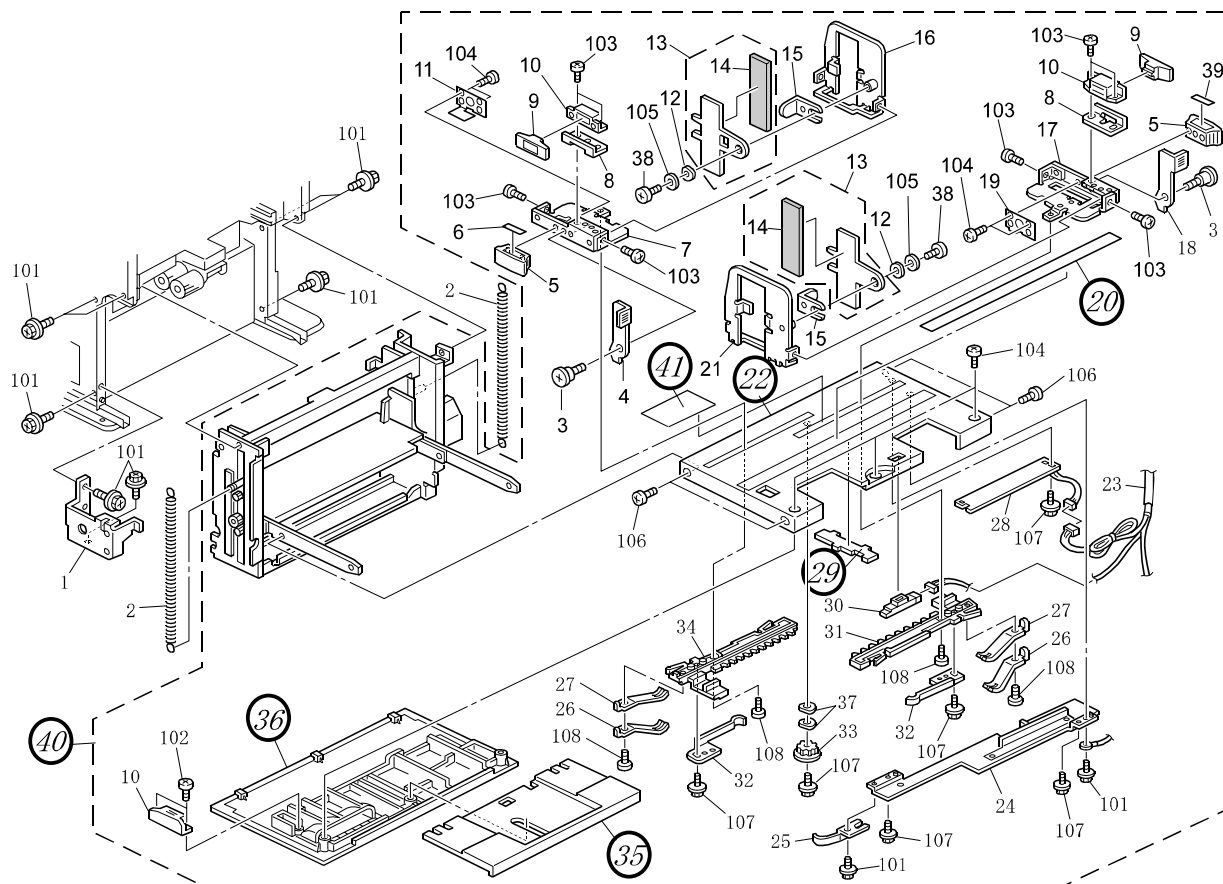
Sec	Page	Index	Parts No.	Description	Q'ty
1	7	2	C5931276	Door Cover Assembly	1
1	7	3	C5931277	Upper Door Cover	1
1	7	4	C5937016	Support Cover	1
1	7	11	C5931274	Main Switch Cover	1
1	7	12	C5931273	Left Cover	1
1	7	15	C5931298	Rear Left Cover	1
1	7	16	C5931275	Upper Cover	1
1	7	19	C5931289	Rear Cover	1
1	7	20	C5931299	Rear Right Cover	1
1	7	21	C5931284	Right Cover	1
1	7	23	C5931354	Decal – Paper Feed	1

2. Exterior 2 (C593)



Sec	Page	Index	Parts No.	Description	Q'ty
2	9	2	C5931314	LED Cover	2
2	9	3	C5931353	Decal – LED	2
2	9	7	C5931306	Upper Inner Cover	1
2	9	8	C5931307	Lower Inner Cover	1
2	9	9	C5931358	Decal – Exit Pawl	1
2	9	11	C5931309	Right Inner Cover	1
2	9	12	C5931308	Left Inner Cover	1
2	9	14	C2394491	Front Guide	1
2	9	16	C2394492	Rear Guide	1
2	9	17	C2393858	Right Support Plate	1
2	9	18	C2393857	Left Support Plate	1
2	9	20	C5931322	Exit Drum Stay	1
2	9	21	C5931264	Left Cover Plate	1
2	9	22	C5931457	Operation Panel Assembly – NA	1
2	9	22	C5931458	Operation Panel Assembly – EU	1
2	9	23	C5931269	Right Cover Plate	1
2	9	25	C5931268	Lower Middle Cover	1
2	9	27	C2354492	Right Front Paper Guide	1
2	9	28	C2354494	Right Rear Paper Guide	1

3. Paper Feed Section 1 (C593)



Sec	Page	Index	Parts No.	Description	Q'ty
3	11	20	C5932955	Decal – Paper Scale	1
3	11	22	C2442773	Paper Tray	1
3	11	29	C2442779	Harness Holder	1
3	11	35	C2402775	Paper Tray – Sub	1
3	11	36	C2442774	Paper Feed Cover	1
3	11	40	C5932750	Paper Feed Table Assembly	1
3	11	41	C5932956	Paper Size Decal	1

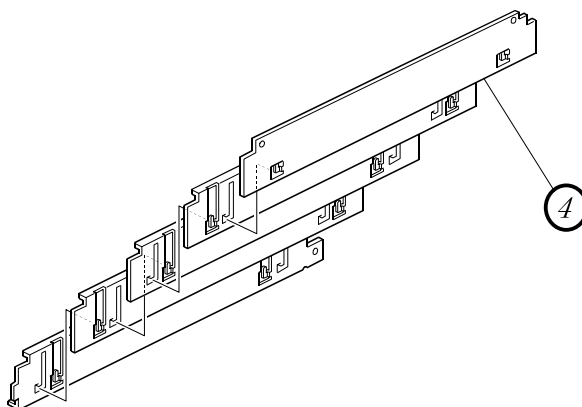


Model: PRIPORT OPAL/OPAL-MC

Date: 25-Dec-03

No: M-C593-001

4. Paper Feed Section 2 (C593)



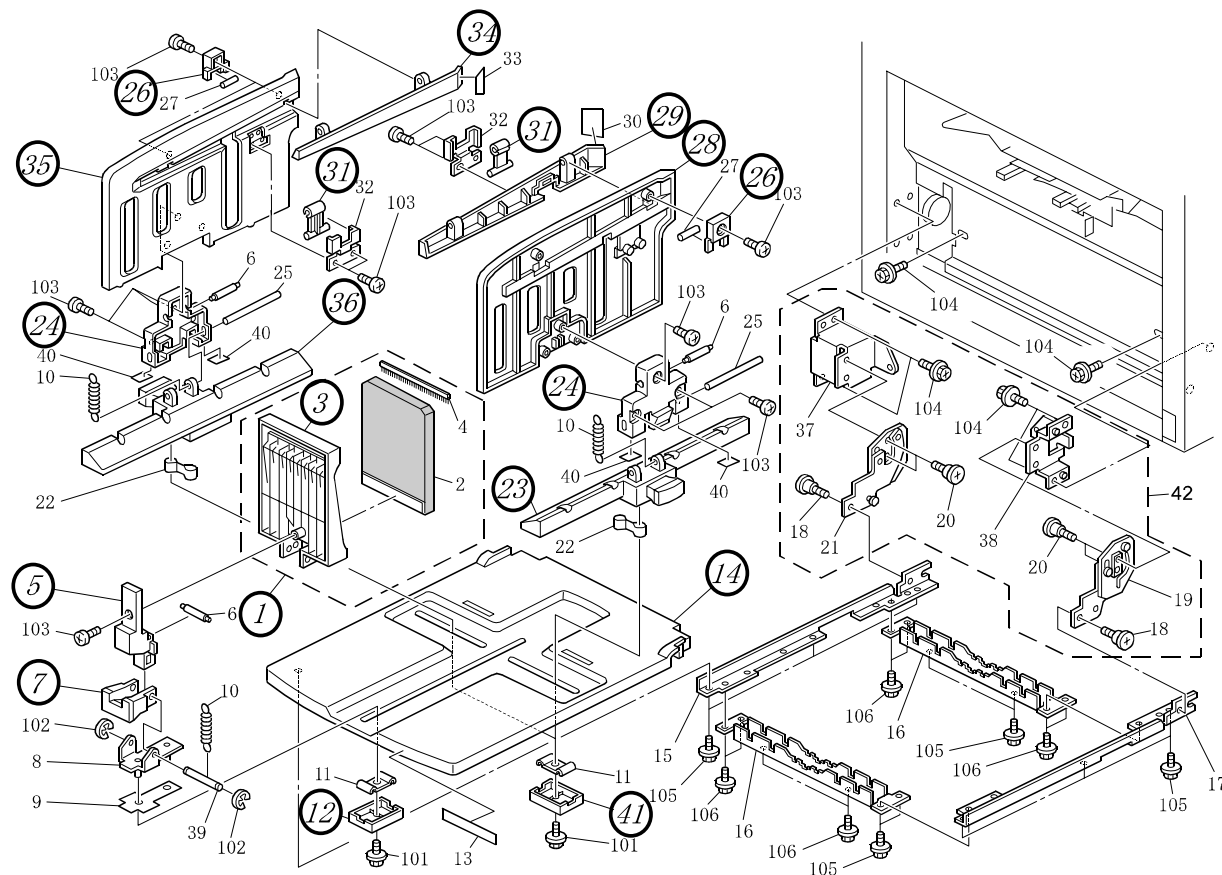
Sec	Page	Index	Parts No.	Description	Q'ty
4	13	4	C2392766	Upper Shield Plate	1

Model: PRIPORT OPAL/OPAL-MC

Date: 25-Dec-03

No: M-C593-001

13. Paper Exit Section 3 (C593)

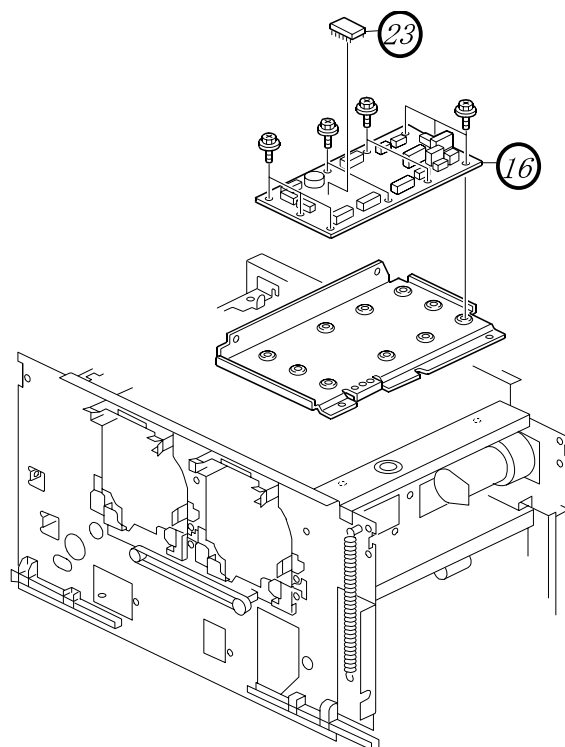


Sec	Page	Index	Parts No.	Description	Q'ty
13	31	1	C2384419	End Plate Assembly	1
13	31	3	C2384420	End Fence – Sub Assembly	1
13	31	5	C2384422	End Fence Case – Paper Exit	1
13	31	7	C2384406	Side Fence Grip	1
13	31	12	C2384421	Slider Cover	1
13	31	14	C2384390	Paper Exit Base	1
13	31	23	C2384395	Front Lower Guide	1
13	31	24	C2384413	Side Fence Case – Paper Exit	2
13	31	26	C2384417	Guide Plate Upper Stopeer	4
13	31	28	C2384411	Front Side Fence – Paper Exit	1
13	31	29	C2384415	Exit Guide Plate – Front Upper	1
13	31	31	C2384425	Link Guide	2
13	31	34	C2384416	Exit Guide Plate – Rear Upper	1
13	31	35	C2384412	Rear Side Fence – Paper Exit Sub Unit	1
13	31	36	C2384396	Rear Lower Guide	1
13	31	41	C2384456	Slider Cover	2

Model: PRIPORT OPAL/OPAL-MC

Date: 25-Dec-03

No: M-C593-001

19. Electrical Section (C593)


Sec	Page	Index	Parts No.	Description	Q'ty
19	43	16	C5935130	Image Control Board	1
19	43	23	C5935135	IC Control 19050007	1

22. Decal And Documents (C593)

Sec	Page	Index	Parts No.	Description	Q'ty
22	51	1	C5931354	Decal – Paper Feed	1
22	51	2	C5931353	Decal – LED	2
22	51	3	C5931358	Decal – Exit Pawl	1
22	51	4	C5932955	Decal – Paper Scale	1
22	51	5	C5932956	Decal – Paper Size	1

Model: PRIPORT OPAL/OPAL-MC**Date:** 25-Dec-03**No:** M-C593-001**CUT IN SERIAL NUMBERS**

Model Name	V/Hz	Destination	Code	Serial Number
TC-II	120/60	USA, Canada	C593-52	-
TC-II	230/50	Europe, etc	C593-53	-
TC-II	120/60	USA, Canada	C593-82	F0731200001~
TC-II	230/50	Europe, etc	C593-83	

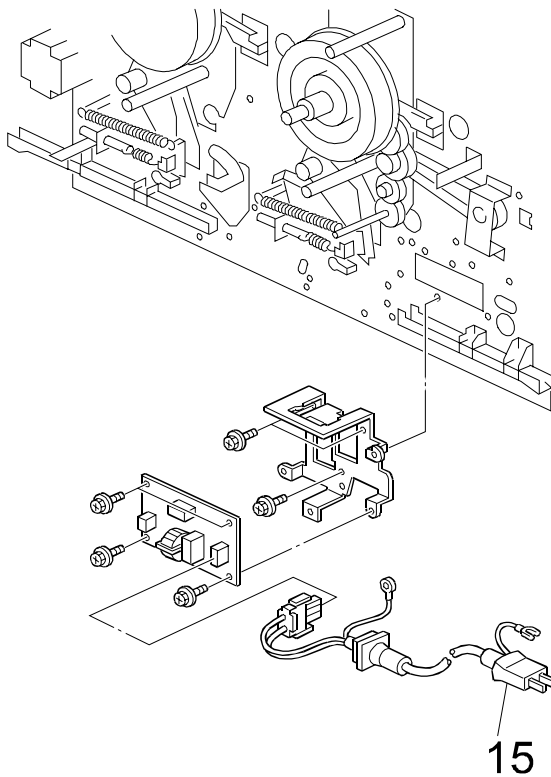
Model: PRIPORT OPAL/OPAL-MC		Date: 30-Jan-04	No: M-C593-002
Modified Article: Power Supply Cord		Prepared by:	
From: Priport Service Planning Section		A. Yoshida	
Classification: <input type="checkbox"/> Parts catalog correction <input checked="" type="checkbox"/> Vendor change <input type="checkbox"/> To meet standards <input type="checkbox"/> To facilitate assembly <input type="checkbox"/> To improve reliability <input type="checkbox"/> Part standardization <input type="checkbox"/> Other ()			
Model Name: TC-II			

The following has been changed due to a vendor change.

Note: The new parts below (#C2315008 and #C2315009) are also used on the Silver, Silver-V and Silver-V2.

Opal/Opal-MC Parts Catalog

Old #	New #	Description	Qty	Int	Page	Index
C5935008	C2315008	Power Supply Cord – 125V (NA)	1	O/O	41	15
C5935009	C2315009	Power Supply Cord – 230V (EU)	1	O/O	41	15

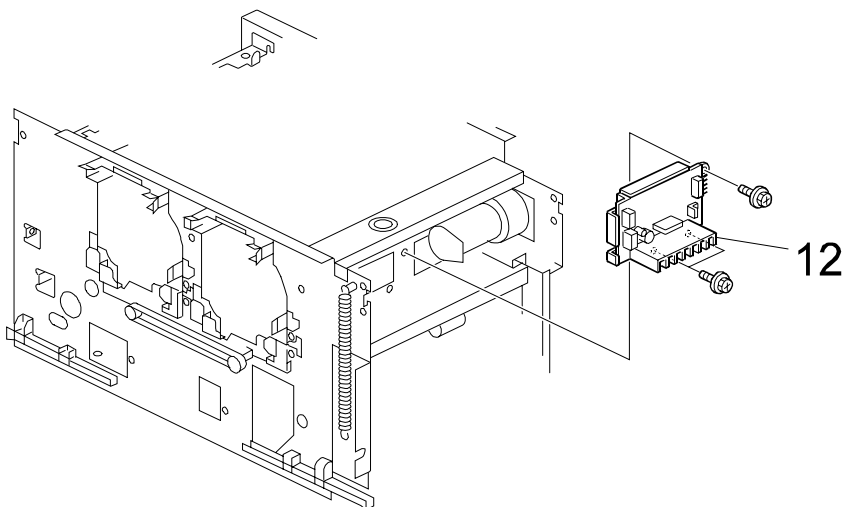


Model: PRIPORT OPAL/OPAL-MC		Date: 4-Feb-04	No: M-C593-003
Modified Article: Main Motor Control Board		Prepared by:	
From: Priport Service Planning Section		A. Yoshida	
Classification:	<input type="checkbox"/> Parts catalog correction <input type="checkbox"/> Vendor change <input type="checkbox"/> To meet standards <input type="checkbox"/> To facilitate assembly <input checked="" type="checkbox"/> To improve reliability () <input type="checkbox"/> Part standardization <input type="checkbox"/> Other ()		
Model Name:			
TC-II			

The following has been changed to optimize the detection conditions of SC05-01 (Main motor lock) so that unnecessary occurrences are eliminated.

Opal/Opal-MC Parts Catalog

Old #	New #	Description	Qty	Int	Page	Index
C5935150	C5935155	Main Motor Control Board Assembly	1	X/O	43	12



Model: PRIPORT OPAL/OPAL-MC**Date:** 4-Feb-04**No:** M-C593-**003****CUT IN SERIAL NUMBERS**

Model Name	V/Hz	Destination	Code	Serial Number
TC-II	120/60	USA, Canada	C593-52	F0731200001
TC-II	230/50	Europe, etc	C593-53	
TC-II	120/60	USA, Canada	C593-82	
TC-II	230/50	Europe, etc	C593-83	

Model: PRIPORT OPAL/OPAL-MC		Date: 24-Jan-05	No: M-C593-004
Modified Article: Modified to environmentally-friendly material		Prepared by:	
From: Priport Service Planning Section		K. Yamamoto	
Classification: <input type="checkbox"/> Parts catalog correction <input type="checkbox"/> Vendor change <input type="checkbox"/> To meet standards <input type="checkbox"/> To facilitate assembly <input type="checkbox"/> To improve reliability () <input type="checkbox"/> Part standardization <input checked="" type="checkbox"/> Other ()			
Model Name:			
TC-II			

Change: Materials were changed to more environmentally-friendly types.

Reason: This is part of Ricoh's ongoing application of in-house environmental management standards.

Note: The parts in the table below are common to both the Opal and Opal-MC. These parts are listed in the Opal Parts Catalog. For parts that are unique to the Opal-MC, see MB #MC593-001.

Opal / Opal-MC

Old part number	New part Number	Description	Q'ty	Int	Page	Index
C2292850	C2442850	Paper Feed Stay	1	O/O	15	33
C2295732	C2445734	Feed Pressure Motor Bracket	1	O/O	15	17
C2295730	C2445730	Paper Table Motor Bracket	1	O/O	13	14
C2292751	C2442751	Right Side Plate	1	O/O	13	12
C2292755	C2442755	Lift Up Rack - Paper Table	1	O/O	13	7
C2292754	C2442754	Left Side Plate	1	O/O	13	9
56073927	C2442799	Stepped Screw - M3x8	2	O/O	13	23
C2292955	C2442955	Ground Plate	1	O/O	11	24
C5934102	C2444101	Transport Belt Case	1	O/O	29	8

Note: The parts in the table below are unique to the Opal-MC. They were originally announced in MB #MC593-001.

Opal-MC

Old part number	New part Number	Description	Q'ty	Int	Page	Index
C2402775	C2452775	Paper Tray - Sub	1	O/O	11	35
C2442773	C2442775	Paper Tray	1	O/O	11	22
C2442779	C2442778	Harness Holder	1	O/O	11	29
C2442774	C2442784	Paper Feed Cover	1	O/O	11	36

Model: PRIPORT OPAL/OPAL-MC/HQ-OPAL		Date: 20-Jan-06	No: M-C593-005
Modified Article: Power Supply Unit		Prepared by: A. Yoshida	
From: Priport Service Planning Section			
Classification:	<input type="checkbox"/> Parts catalog correction <input type="checkbox"/> Vendor change <input type="checkbox"/> To meet standards <input type="checkbox"/> To facilitate assembly <input checked="" type="checkbox"/> To improve reliability () <input type="checkbox"/> Part standardization <input type="checkbox"/> Other ()		
Model Name: TC-II, TC-IIR			

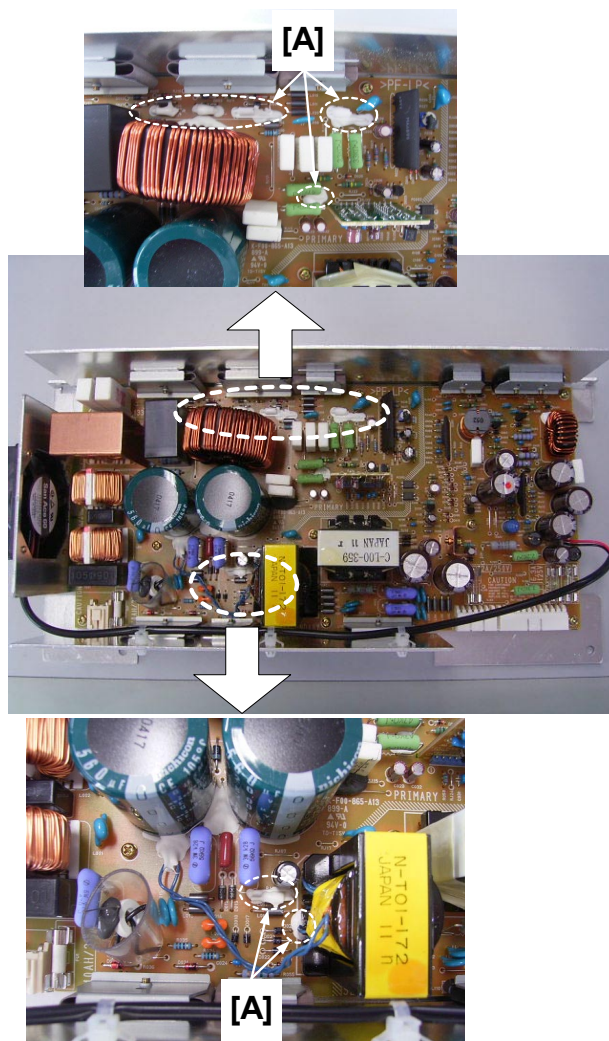
This MB applies to the Opal and Opal-MC.

Change: Insulating sealant [A] was added to some parts on the Power Supply Unit.

Reason: To further insulate the board from small metallic particles.

Opal/Opal-MC Parts Catalog

Old #	New #	Description	Qty	Int	Page	Index
C5935300	C5935500	POWER SUPPLY UNIT:ASS'Y	1	X/O	43	19



Model: PRIPORT OPAL/OPAL-MC/HQ-OPAL**Date:** 20-Jan-06**No:** M-C593-005**CUT IN SERIAL NUMBERS**

Model Name	V/Hz	Destination	Code	Serial Number
TC-II	120/60	USA, Canada	C593-52	Discontinued
TC-II	230/50	Europe, etc	C593-53	Discontinued
TC-II	120/60	USA, Canada	C593-82	F0760100001
TC-II	230/50	Europe, etc	C593-83	
TC-IIR	120/60	USA, Canada	C639-52	-
TC-IIR	230/50	Europe, etc	C639-53	-

Model: PRIORT OPAL/OPAL-MC/HQ-OPAL		Date: 20-Jan-06	No: M-C593-006
Modified Article: Gear Shaft		Prepared by: A. Yoshida	
From: Priort Service Planning Section			
Classification: <input type="checkbox"/> Parts catalog correction <input type="checkbox"/> Vendor change <input type="checkbox"/> To meet standards <input type="checkbox"/> To facilitate assembly <input checked="" type="checkbox"/> To improve reliability () <input type="checkbox"/> Part standardization <input type="checkbox"/> Other ()			
Model Name: TC-II, TC-IIR			

This MB applies to the Opal and Opal-MC.

Change:

- 1) The length of the gear shaft was decreased by 2mm
- 2) A washer was added between the gear and e-ring.

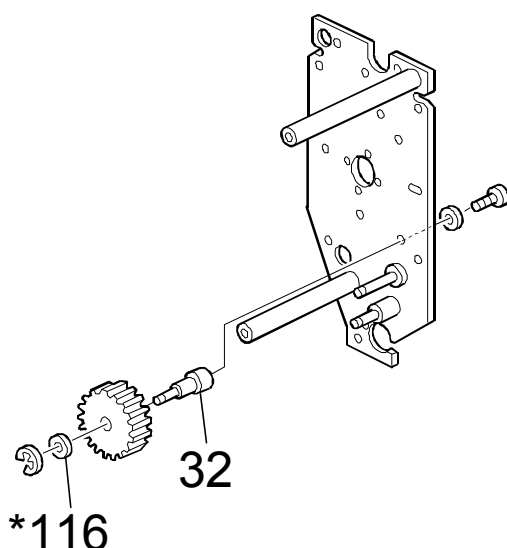
Reason: To ensure that the gear does not come loose from the ball bearing

NOTE: See RTB #RC593002 for details.

Opal/Opal-MC Parts Catalog

Old #	New #	Description	Qty	Int	Page	Index
C5931698	C6391698	SHAFT:GEAR:NO.1	1	X/O as a set	37	32
-	07010080N	WASHER DIA8	1		37	*116

Illustration



Model: PRIPORT OPAL/OPAL-MC/HQ-OPAL**Date:** 20-Jan-06**No:** M-C593- **006****CUT IN SERIAL NUMBERS**

Model Name	V/Hz	Destination	Code	Serial Number
TC-II	120/60	USA, Canada	C593-52	Discontinued
TC-II	230/50	Europe, etc	C593-53	Discontinued
TC-II	120/60	USA, Canada	C593-82	F0751000001
TC-II	230/50	Europe, etc	C593-83	
TC-IIR	120/60	USA, Canada	C639-52	-
TC-IIR	230/50	Europe, etc	C639-53	-