

Reissued: 23-Jul-04

RTB Correction

The items in bold italics have been corrected or added.

Model: PRIPORT LCS		Date: 7-Jan-04	No: R-C625-001c
Subject: Firmware Modification History		Prepared by: K. Yamamoto, Priport Service Planning Section	
Classification: <input type="checkbox"/> Troubleshooting <input type="checkbox"/> Part information <input type="checkbox"/> Action required <input type="checkbox"/> Mechanical <input type="checkbox"/> Electrical <input type="checkbox"/> Service manual revision <input type="checkbox"/> Paper path <input type="checkbox"/> Transmit/receive <input type="checkbox"/> Retrofit information <input checked="" type="checkbox"/> Other (Firmware release)			
Model Name: Large Capacity System LS3000			

This is to inform you of the firmware history for the LCS.

FIRMWARE MODIFICATION HISTORY

LCIT

C6255123	File Name	C. SUM	Production
A	C6255123A.bin	BD3D	1st Mass Production

Part number change (C6255123 -> C6255122)

C6255122	File Name	C. SUM	Production
-	C6255122.bin	7399	February 2004 production
A	<i>C6255122A.bin</i>		<i>July 2004 production</i>

LCOT

C6255125	File Name	C. SUM	Production
A	C6255125A.bin	400C	1st Mass Production

Reissued: 23-Jul-04

Model: PRIPORT LCS	Date: 7-Jan-04	No: R-C625-001c
---------------------------	-----------------------	------------------------

LCIT

Symptom Corrected / Changes - C6255123	Suffix
First mass production release.	A

Part's number change (C6255123 -> C6255122)

Symptom Corrected / Changes - C6255122	Suffix
Paper 310mm to 344mm in length (not a machine-defined size) cannot be fed, resulting in an A-jam.	-
<i>It is possible to change the paper pickup speed in the intermediate feed section with the MPU dip switch.</i> Note: - This change was made to ensure that the paper arrives at the duplicator feed rollers faster, which prevents A-jams. - See RTB# RC625005 for the dip switch procedure.	A

LCOT

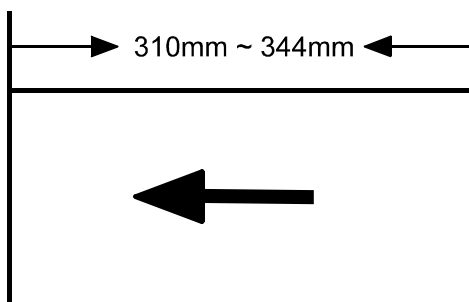
Symptom Corrected / Changes	Suffix
First mass production release.	A

Model: PRIPORT LCS		Date: 4-Mar-04	No: R-C625-002
Subject: Undefined paper non-feed		Prepared by: K. Yamamoto, Priport Service Planning Section	
Classification: <input type="checkbox"/> Troubleshooting <input type="checkbox"/> Part information <input checked="" type="checkbox"/> Action required <input type="checkbox"/> Mechanical <input checked="" type="checkbox"/> Electrical <input type="checkbox"/> Service manual revision <input type="checkbox"/> Paper path <input type="checkbox"/> Transmit/receive <input type="checkbox"/> Retrofit information <input type="checkbox"/> Other ()			
Model Name: Large Capacity System LS3000			

Note: The following applies to December 2003 and January 2004 production only, i.e. only to the first 30 machines shipped to Europe.

SYMPTOM

Paper 310mm to 344mm in length (not a machine-defined size) cannot be fed, resulting in an A-jam.



NOTE: 1) This symptom applies to this particular paper size only.
 2) The length (310 to 344mm) is the only factor, i.e. width does not affect this symptom at all.

CAUSE

Firmware bug.

SOLUTION

The LCIT firmware has been modified to ensure that the above size can be fed correctly.

Please see the following: Parts catalog correction – MC625002

Firmware modification history – RC625001b

Serial Numbers Range of Affected Units:

December 2003 production: From F5431200001 to F5431200020

January 2004 production: From F5440100001 to F5440100010

Model: PRIPORT LCS		Date: 22-Apr-04	No: R-C625-003
Subject: Service manual revision - Tension Belt		Prepared by: K. Yamamoto, Priport Service Planning Section	
Classification:	<input type="checkbox"/> Troubleshooting <input type="checkbox"/> Mechanical <input type="checkbox"/> Paper path <input type="checkbox"/> Other ()	<input type="checkbox"/> Part information <input type="checkbox"/> Electrical <input type="checkbox"/> Transmit/receive	<input type="checkbox"/> Action required <input checked="" type="checkbox"/> Service manual revision <input type="checkbox"/> Retrofit information
Model Name: Large Capacity System LS3000			

Note: The following has been applied from February 2004 production.

Please apply the revision below to your LCS Service Manuals, which follows a modification to the tension bracket for the tension belt mentioned in MB #MC625005.

Model: PRIPORT LCS

Date: 22-Apr-04

No: R-C625-003

Service Manual (machine code: C625), pp. 3-21, 3-22

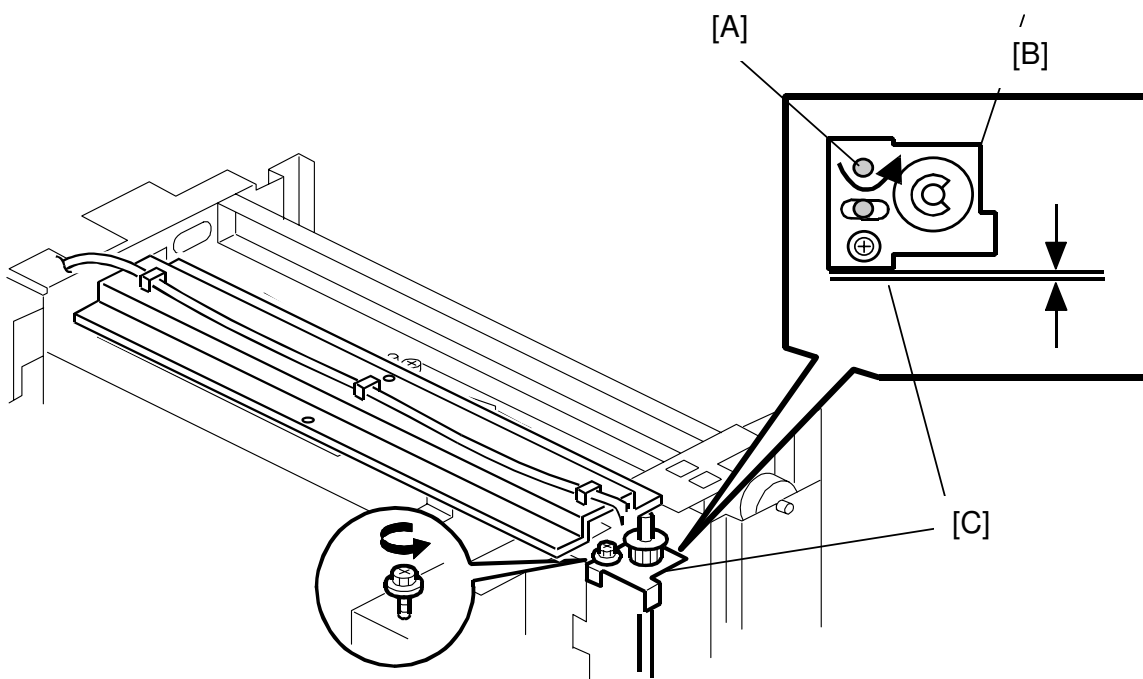
3. REPLACEMENT AND ADJUSTMENT - 3.2LCIT - 3.2.7 SIDE FENCE - Side Fence Adjustment Belt (top and bottom)

Before revision:

Note: 1) Adjust the belt tension with bracket [E]. The gap [F] must be more than 1.5 mm.

After revision:

Note: The top opening [A] in the bracket [B] is used as a pivot point to rotate the bracket and adjust the tension of the side fence belt. The bracket should be aligned parallel with the side fence [C], which will ensure the proper belt tension.



Model: PRIPORT LCS		Date: 9-Jun-04	No: R-C625-004
Subject: Troubleshooting for paper jam at paper table		Prepared by: K. Yamamoto, Priport Service Planning Section	
Classification:	<input checked="" type="checkbox"/> Troubleshooting <input type="checkbox"/> Mechanical <input type="checkbox"/> Paper path <input type="checkbox"/> Other ()	<input type="checkbox"/> Part information <input type="checkbox"/> Electrical <input type="checkbox"/> Transmit/receive	<input type="checkbox"/> Action required <input type="checkbox"/> Service manual revision <input type="checkbox"/> Retrofit information
Model Name: Large Capacity System LS3000			

Note: Please refer to MB #MC625006 for the related P/N change.

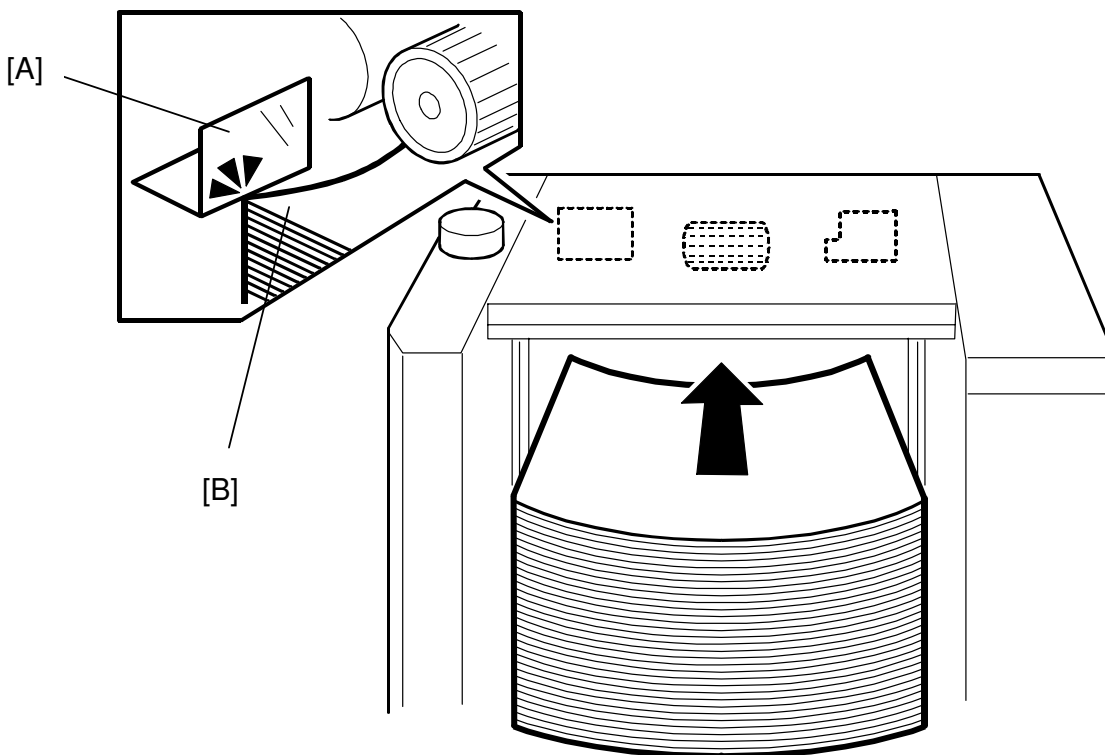
SYMPTOM

An A-jam occurs at the paper feed section if the paper is stacked near capacity (approximately 3,000 sheets) and the sheets are curled.

CAUSE

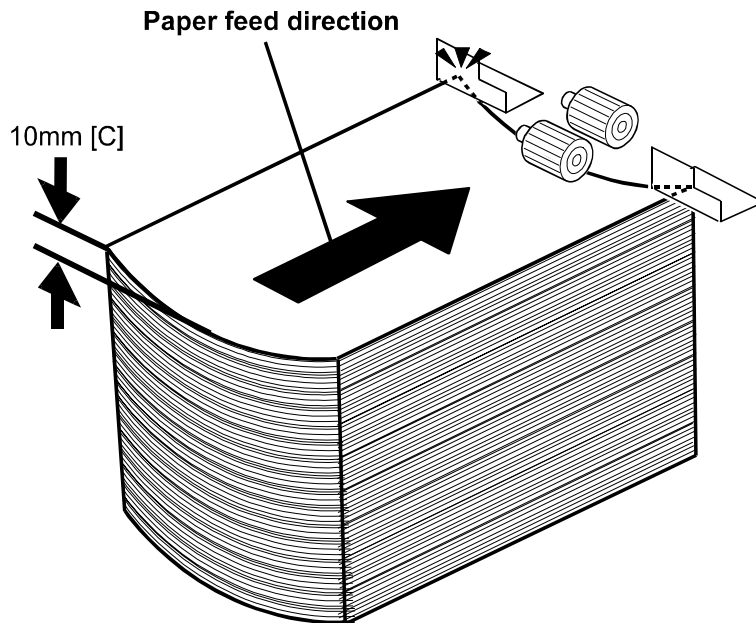
The paper [B] contacts the guide board sheet [A] due to the height of the stack and the curl in the paper, and the paper is fed skewed. (This curl is exaggerated with increased paper stack height).

Note: The above only occurs when using paper that is already curled, which is a non-recommended condition, as mentioned in the Operator's Instructions.



Model: PRIPORT LCS

Date: 9-Jun-04

No: R-C625-004


Paper stack condition leading to skewed feed:

- The curl in each individual sheet is amplified as the height of the stack increases.
- With close to 3,000 sheets, a sheet gap of about 10 mm [C] can result, which tends to trigger the skewed feed and paper jam.

SOLUTION

In the Field

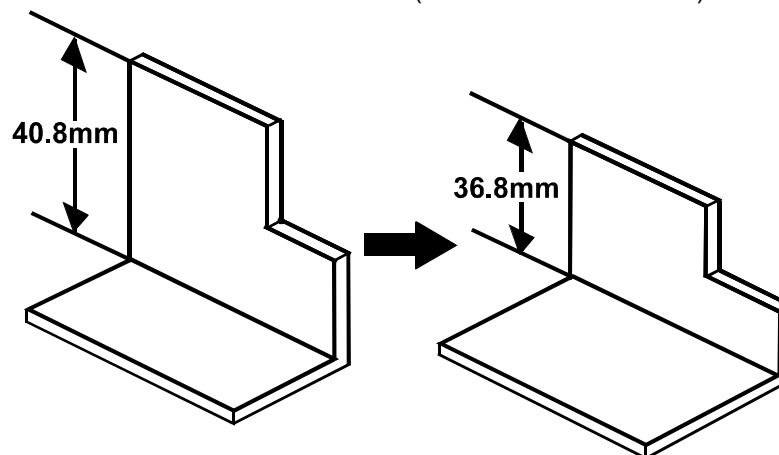
Please advise customers to use paper that is not curled, as described in the Operator's Instructions. To offset the effect from curling, it is often effective to load the paper upside down in the tray and/or fan the paper before loading.

Production Line

The shape of the guide board sheet has been changed to improve paper feed even when the sheets are already curled and are stacked near paper feed table capacity.

Note:

- This modification ensures proper paper feed even when the sheet gap [C] is higher than 10mm (i.e. up to approximately 15mm).
- New guide board sheet P/N: C6252921 (see MB #MC625006).



Model: PRIPORT LCS		Date: 23-Jul-04	No: R-C625-005
Subject: Paper feed speed adjustment		Prepared by: K. Yamamoto, Priport Service Planning Section	
Classification:	<input type="checkbox"/> Troubleshooting <input type="checkbox"/> Mechanical <input type="checkbox"/> Paper path <input type="checkbox"/> Other ()	<input type="checkbox"/> Part information <input type="checkbox"/> Electrical <input type="checkbox"/> Transmit/receive	<input type="checkbox"/> Action required <input type="checkbox"/> Service manual revision <input checked="" type="checkbox"/> Retrofit information
Model Name: Large Capacity System LS3000			

The LCIT firmware was changed as follows.

Note: See RTB# RC625001c for the firmware history.

Firmware P/N change:

C6255122 → C6255122A.

Changes:

- It is possible to change the paper pickup speed in the intermediate feed section with the MPU dip switch.
 - **Note:** This change was made to ensure that the paper arrives at the duplicator feed rollers faster, which prevents A-jams.

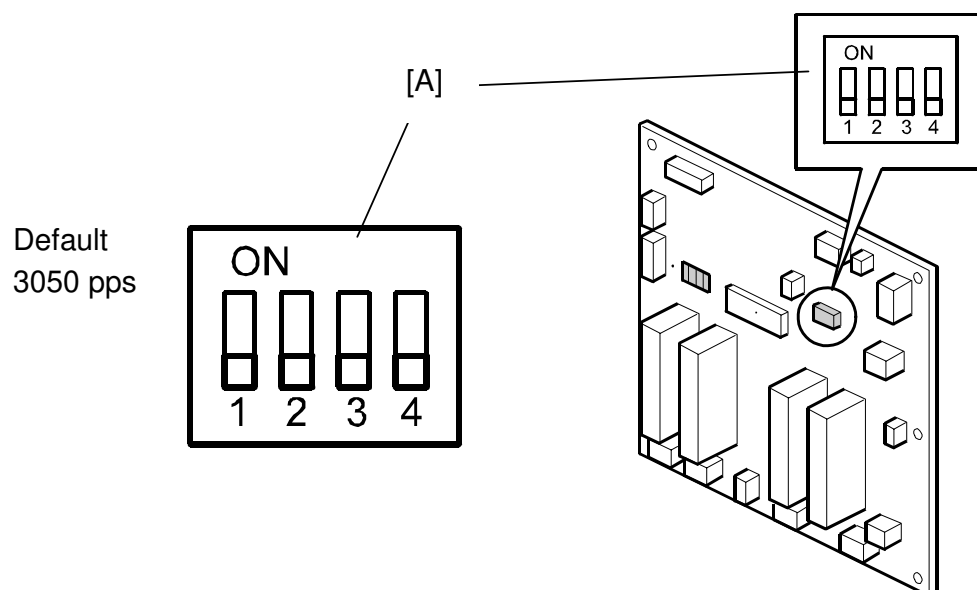
Adjustments/procedures:

See the next page.

Adjusting the Paper Pickup Speed (Intermediate Feed Section)

If A-jams are reported from the field, increase the paper pickup speed with the dip switch on the MPU board.

1. Turn off the main switch, and then disconnect the power plug.
2. Remove the rear cover.
3. Set the dip switch [A] on the LCIT MPU as follows.



Speed (pps)	Dip Switch			
	1	2	3	4
2550	OFF	ON	ON	OFF
2750	ON	ON	ON	OFF
3050 (default)	OFF	OFF	OFF	OFF
3200	ON	ON	OFF	OFF
3300	OFF	OFF	ON	OFF
3400	ON	OFF	ON	OFF
3500	OFF	ON	OFF	OFF

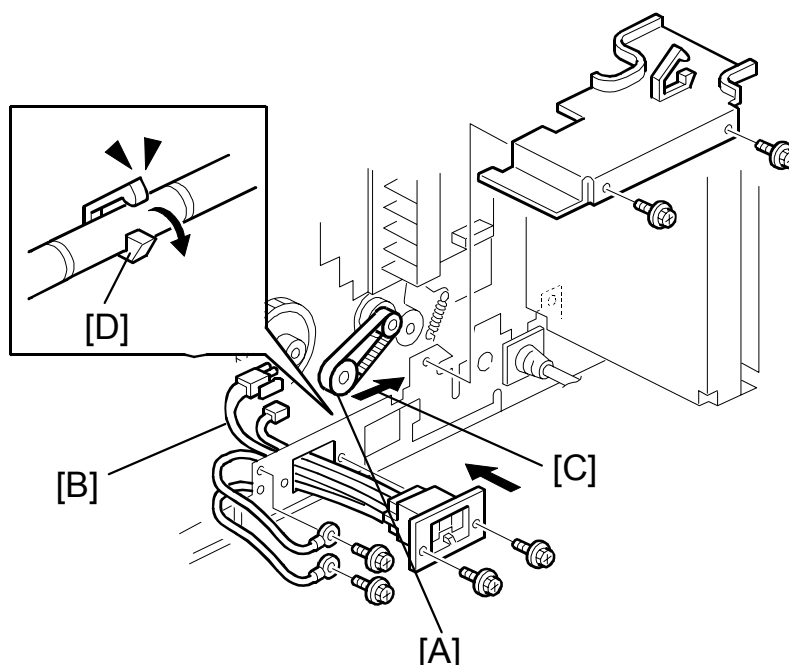
NOTE: If A-jams still occur after you increase the speed to 3500 pps, replace the paper feed roller for the LCIT. If this is not effective enough, replace the intermediate under feed rollers.

Model: PRIPORT LCS/HQ-LCS		Date: 27-Dec-05	No: R-C625-006
Subject: LCOT socket installation		Prepared by: K. Yamamoto, Priport Service Planning Section	
Classification:	<input checked="" type="checkbox"/> Troubleshooting <input type="checkbox"/> Mechanical <input type="checkbox"/> Paper path <input type="checkbox"/> Other ()	<input type="checkbox"/> Part information <input type="checkbox"/> Electrical <input type="checkbox"/> Transmit/receive	<input type="checkbox"/> Action required <input type="checkbox"/> Service manual revision <input type="checkbox"/> Retrofit information
Model Name: LCS: Large Capacity System LS3000 HQ-LCS: Large Capacity System LS3000R			

This RTB is for HQ-LCS only.

SYMPTOM

The harness [B] might touch the belt and gear [A] when you install the LCOT socket in the Emerald.



Cause

The harness [A] does not have any tension.

Solution

Before modification implemented in the machine:

Pull the harness [B] in the direction of the arrow [C] until there is no slack in the harness.

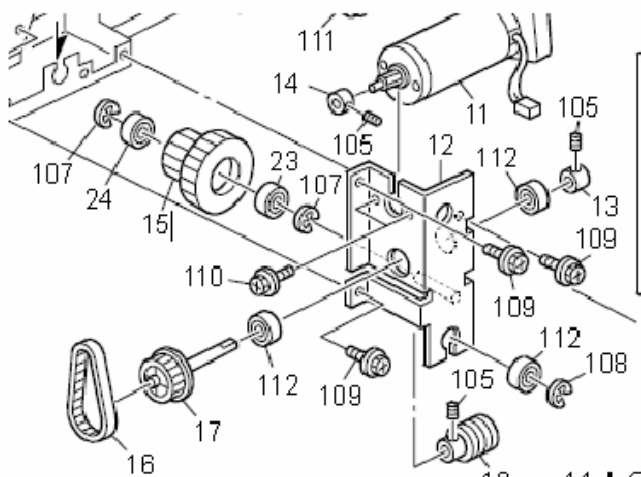
After modification implemented in the machine (From April Production):

A clamber [D] is added on the bottom plate, and the harness is bundled by the clamber [D].

Model: MT-C4		Date: 18-Feb-13	No.: RC625007
Subject: Part Catalog Correction		Prepared by: K. Yamamoto	
From: 1st Tech Service Sect., MFP/P Tech Service Dept.			
Classification:	<input type="checkbox"/> Troubleshooting <input type="checkbox"/> Mechanical <input type="checkbox"/> Paper path <input type="checkbox"/> Product Safety	<input checked="" type="checkbox"/> Part information <input type="checkbox"/> Electrical <input type="checkbox"/> Transmit/receive <input type="checkbox"/> Other ()	<input type="checkbox"/> Action required <input type="checkbox"/> Service manual revision <input type="checkbox"/> Retrofit information <input type="checkbox"/> Tier 2

Old part number	New part number	Description	Q'ty	Int	Page	Index	Note
C5633350	C5633344	WORM WHEEL:GEAR:Z44:Z24	1	-	22	15	

Change/Reason: The part number in the catalog was incorrect.



Correct: C5633344
Wrong: C5633350

14	C612 1906	Pulley:15S2M:Drive:AB030216:Ass'y
15	C563 3350	Drive Gear - 45z
16	A380 1434	Timing Pulley - S2M T76
17	A380 1433	Timing Pulley - S2M T70
22		