

Model: PRIPORT PEARL/PEARL-MC/RUBY/SAPPHIRE/GARNET/SA2/SA2P		Date: 15-Nov-04	No: R-C229-025
Subject: JS40-Sorter Installation Procedure		Prepared by: A. Yoshida, Priport Service Planning Section	
Classification:	<input type="checkbox"/> Troubleshooting <input type="checkbox"/> Mechanical <input type="checkbox"/> Paper path <input type="checkbox"/> Other ()	<input type="checkbox"/> Part information <input type="checkbox"/> Electrical <input type="checkbox"/> Transmit/receive	<input type="checkbox"/> Action required <input checked="" type="checkbox"/> Service manual revision <input type="checkbox"/> Retrofit information
Model Name: PEARL/PEARL-MC: Ricoh JP5000, Gestetner 5450, RexRotary 1560, nashuatec CP450, Savin 3350DNP, Standard SD400 RUBY: Ricoh JP5800 SAPPHIRE: Ricoh JP8000, Gestetner 5490, RexRotary 1395, nashuatec CP490, Savin 3450DNP, Standard SD630 GARNET: Ricoh JP5500, Gestetner 5450+/5455, RexRotary1560+, nashuatec CP450+, Savin 3360DNP, Standard SD450, Lanier LDD150 SA2: Ricoh JP8500, Gestetner 5490+/5499, RexRotary1395+, nashuatec CP490+, Savin 3460DNP, Standard SD650, Lanier LDD180 SA2P (China only): Ricoh JP8510P, Gestetner 5500P			

Note: This bulletin is for the optional JS40-Sorter.

Several places in the Installation Procedure have been revised, so please replace the entire procedure with the one in this bulletin.

Model: PRIORT
PEARL/PEARL-MC/RUBY/SAPPHIRE/GARNET/SA2/SA2P

Date: 15-Nov-04

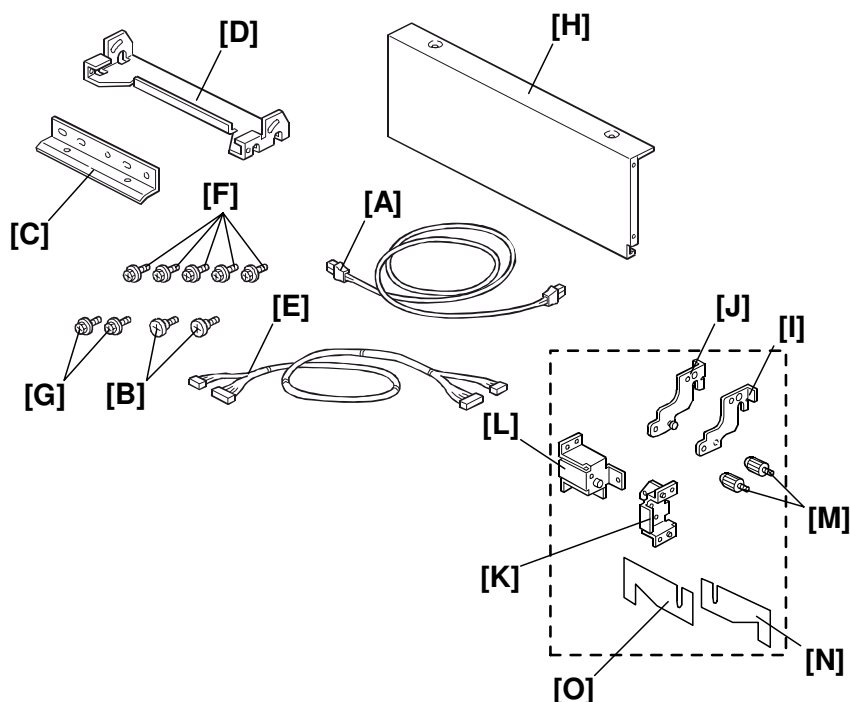
No: R-C229-025

INSTALLATION PROCEDURE

ACCESSORY CHECK

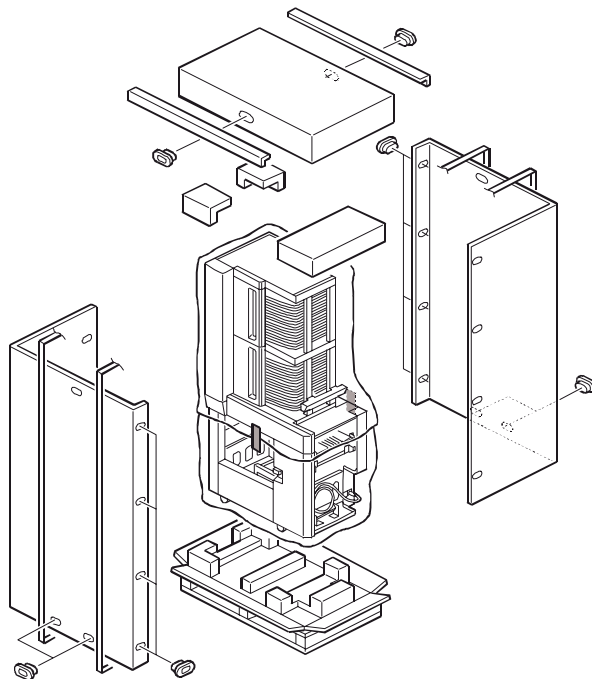
Make sure that you have all the accessories listed below:

Optical fiber cable [A]	1
(Product of Tohoku Ricoh Co., Ltd., P/N: AW030028)	
Stepped screw [B] (To install the upper joint bracket)	2
Lower joint bracket [C]	1
Upper joint bracket [D]	1
Job separator relay harness [E]	1
M4x8 screw [F] (To install the lower joint bracket)	2
M4x8 screw [F] (To join copier machine and sorter)	3
M4x8 screw [G] (To install the front lower cover)	2
Front lower cover [H]	1
Front arm [I] (For models #C235, #C239, #C244)	1
Rear arm [J] (For models #C235, #C239, #C244)	1
Front bracket [K] (For models #C235, #C239, #C244)	1
Rear bracket [L] (For models #C235, #C239, #C244)	1
Knob screw [M] (For models #C235, #C239, #C244)	2
Front exit guide [N] (For models #C235, #C239, #C244)	1
Rear exit guide [O] (For models #C235, #C239, #C244)	1



Model: PRIORT PEARL/PEARL-MC/RUBY/SAPPHIRE/GARNET/SA2/SA2P	Date: 15-Nov-04	No: R-C229-025
--	------------------------	-----------------------

INSTALLATION PROCEDURE



Unpacking

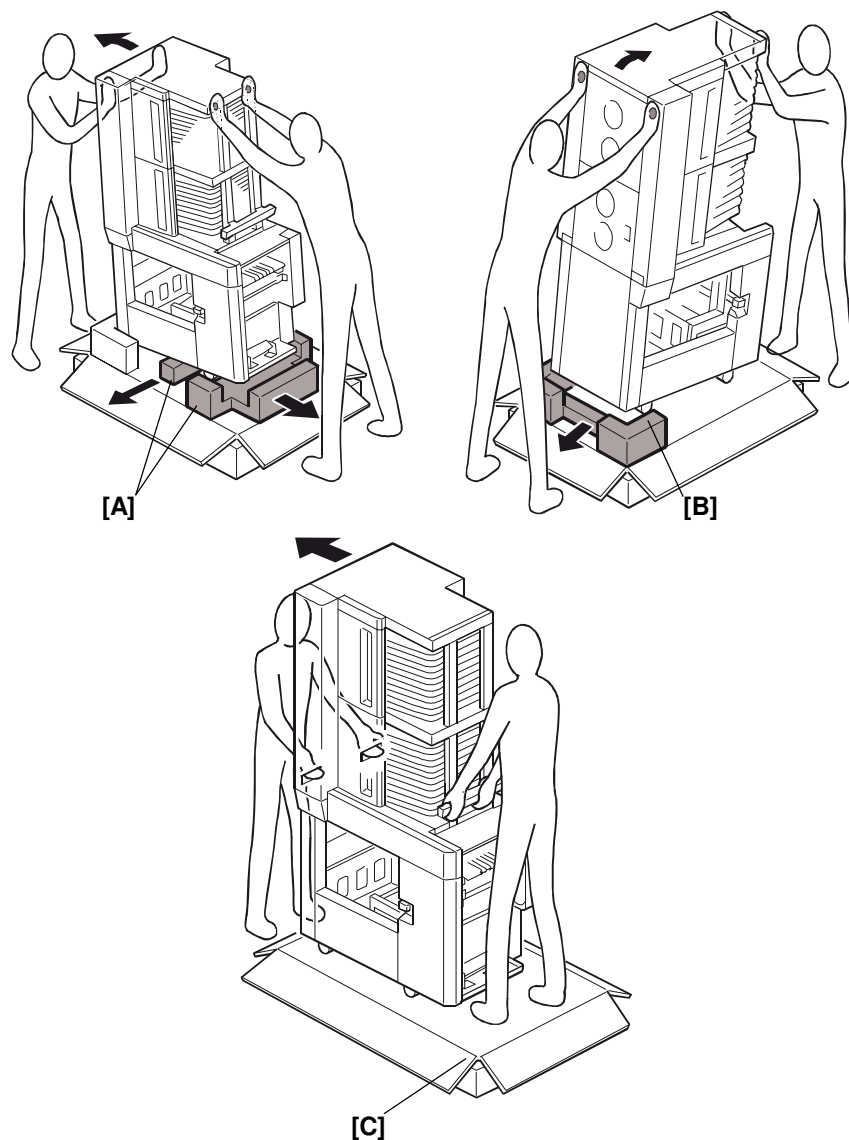
Opening the box

1. Open the box.

Model: PRIORT
PEARL/PEARL-MC/RUBY/SAPPHIRE/GARNET/SA2/SA2P

Date: 15-Nov-04

No: R-C229-025



Lifting the machine off the base

2. Tilt the sorter to the left and remove the two Styrofoam pads [A] in the middle and at the right corner.
3. Tilt the sorter to the right and remove the last Styrofoam pad [B].
4. Slide the sorter off the base [C].

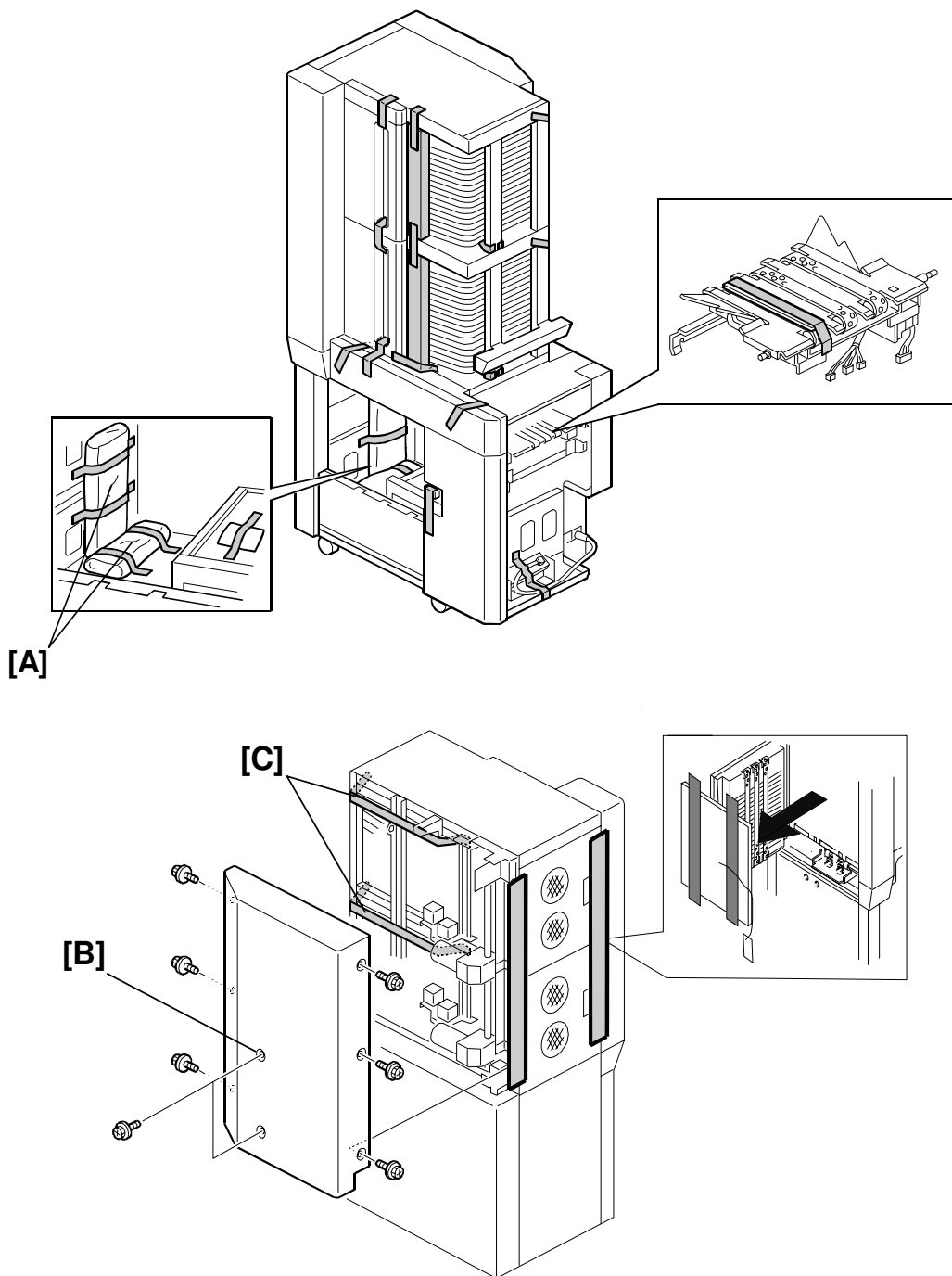
⚠ CAUTION

When you slide the sorter off the base, be very careful not to tip it too far to one side.

Model: PRIORT
PEARL/PEARL-MC/RUBY/SAPPHIRE/GARNET/SA2/SA2P

Date: 15-Nov-04

No: R-C229-025



5. Make sure that both accessory bags [A] are present.
6. Remove the tape that secures the cover and units.
7. Remove the rear cover [B].
8. Remove the tape [C].

Model: PRIPORT PEARL/PEARL-MC/RUBY/SAPPHIRE/GARNET/SA2/SA2P	Date: 15-Nov-04	No: R-C229-025
---	------------------------	-----------------------

SP Mode Settings

1. Insert the plug in the wall outlet firmly.
2. Turn on the main switch.
3. Access SP2-4 (Sorter select mode) and set it to "2" (C232, C233 models).
4. Access SP3-2-6 (Set Sorter) and set it to "Yes", then set the Wing Guide Angle to "2: Down" (C235, C239, C244 models).
5. Turn the main switch off.

Model: PRIORT
PEARL/PEARL-MC/RUBY/SAPPHIRE/GARNET/SA2/SA2P

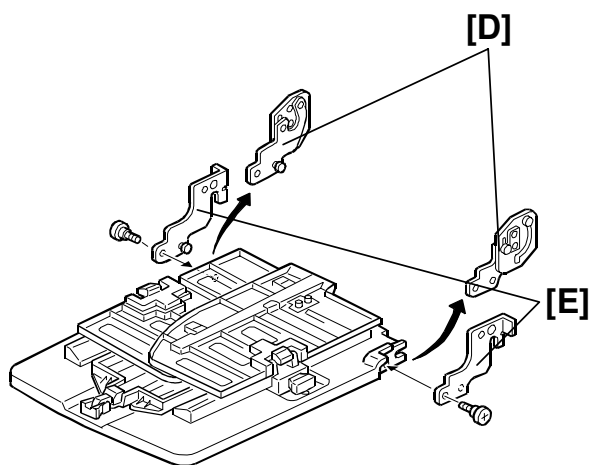
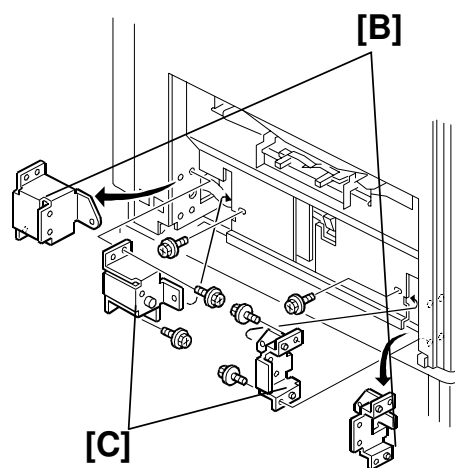
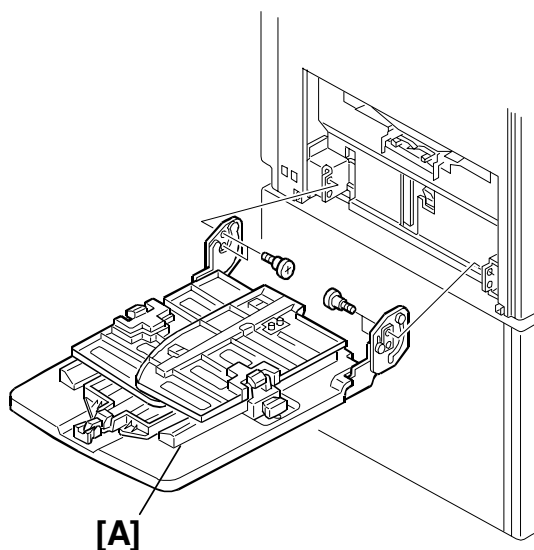
Date: 15-Nov-04

No: R-C229-025

Paper Delivery Table Installation

For models #C235, #C239, #C244

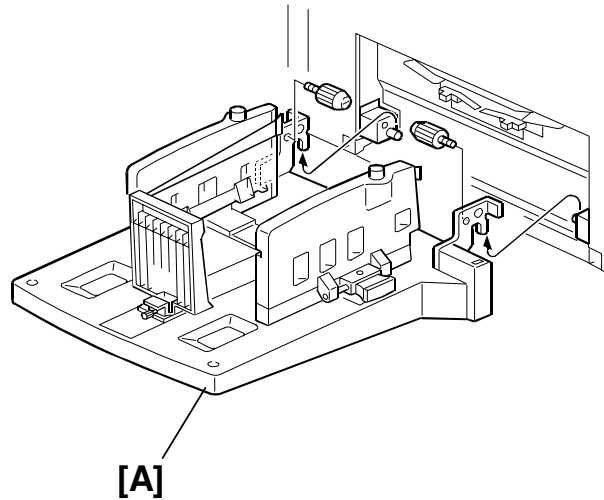
1. Turn off the main switch of the duplicator.
2. Unplug the power cords for the sorter and duplicator.
3. Remove the paper delivery table [A] from the mainframe (2 screws).
4. Remove the front and rear brackets [B].
5. Attach the new front and rear brackets [C] (packed in the accessory bag).
6. Remove the front and rear arms [D].
7. Attach the new front and rear arms [E] (packed in the accessory bag).



Model: PRIPORT PEARL/PEARL-MC/RUBY/SAPPHIRE/GARNET/SA2/SA2P	Date: 15-Nov-04	No: R-C229-025
---	------------------------	-----------------------

For models #C232, #C233

1. Turn off the main switch of the duplicator.
2. Unplug the power cords for the sorter and duplicator.
3. Remove the paper delivery table [A] from the mainframe (2 screws).
NOTE: C232 only: Remove the table cord.



Model: PRIORT
PEARL/PEARL-MC/RUBY/SAPPHIRE/GARNET/SA2/SA2P

Date: 15-Nov-04

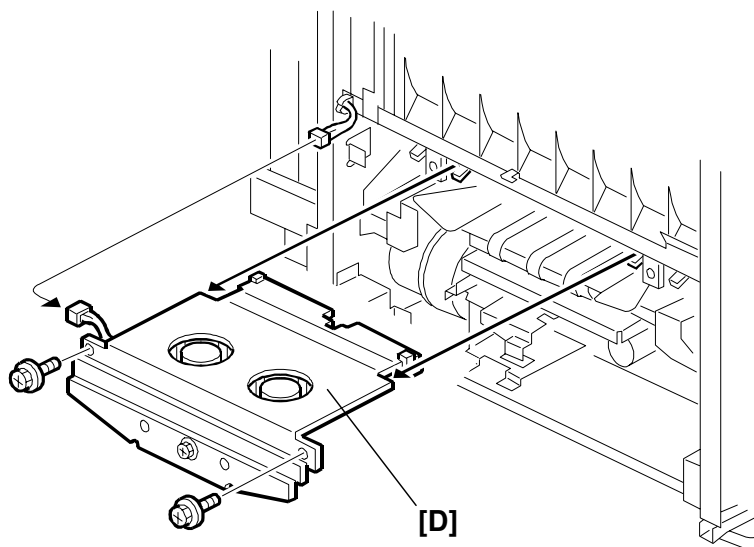
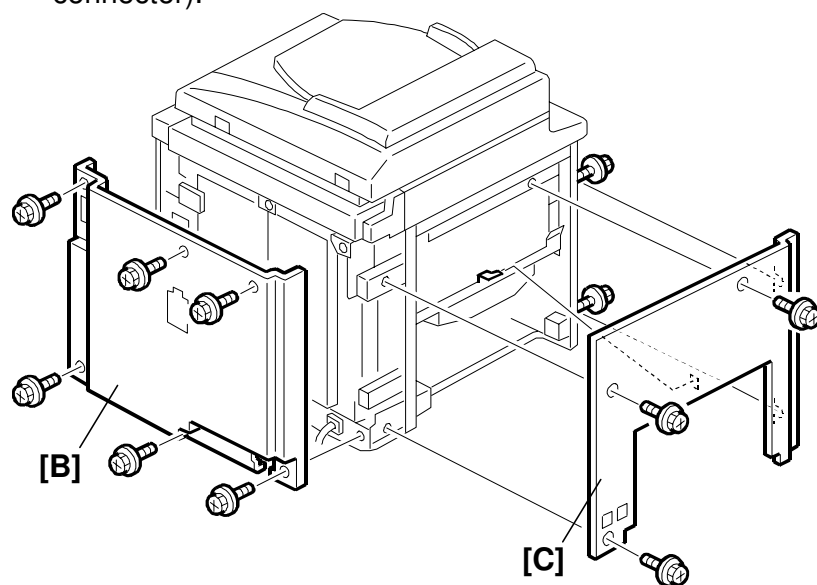
No: R-C229-025

Mainframe Preparation

Important: Keep the parts that you remove in Steps 3-8 below. Later, you will use these parts to install the sorter.

1. Turn off the main switch of the duplicator.
2. Unplug the power cords for the sorter and duplicator.
3. Remove the following parts from the mainframe:

Rear cover [B] (6 screws), left cover [C] (5 screws), air knife unit [D] (2 screws, 1 connector).

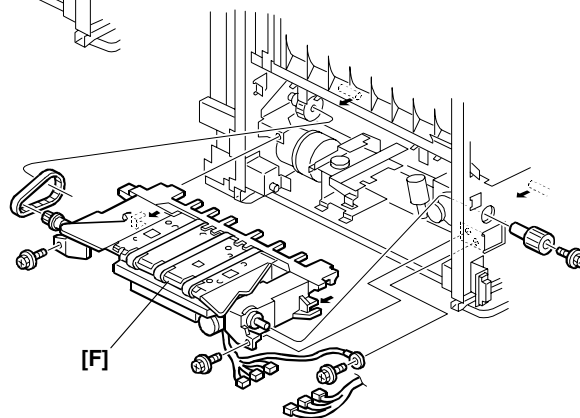
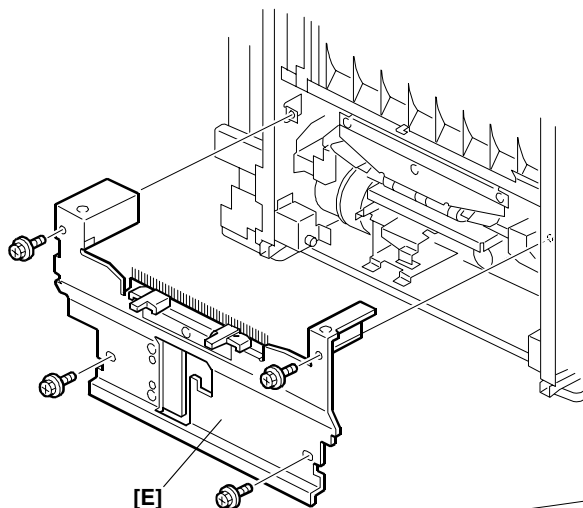


Model: PRIORT
PEARL/PEARL-MC/RUBY/SAPPHIRE/GARNET/SA2/SA2P

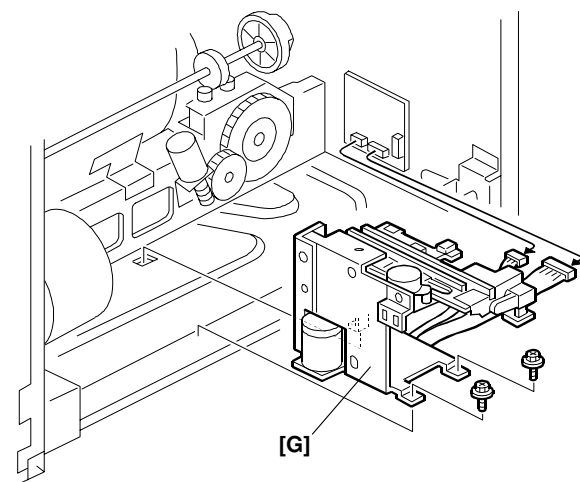
Date: 15-Nov-04

No: R-C229-025

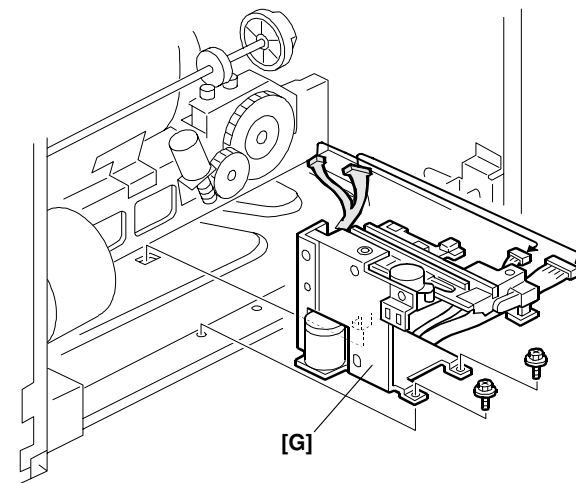
4. Remove the paper delivery cover [E] (4 screws).
5. Remove the paper delivery unit [F] (2 screws, 3 connectors, ground wire, knob, belt).
6. Remove the job separator unit [G] (2 screws, 2 connectors).



-C232, C233 models-



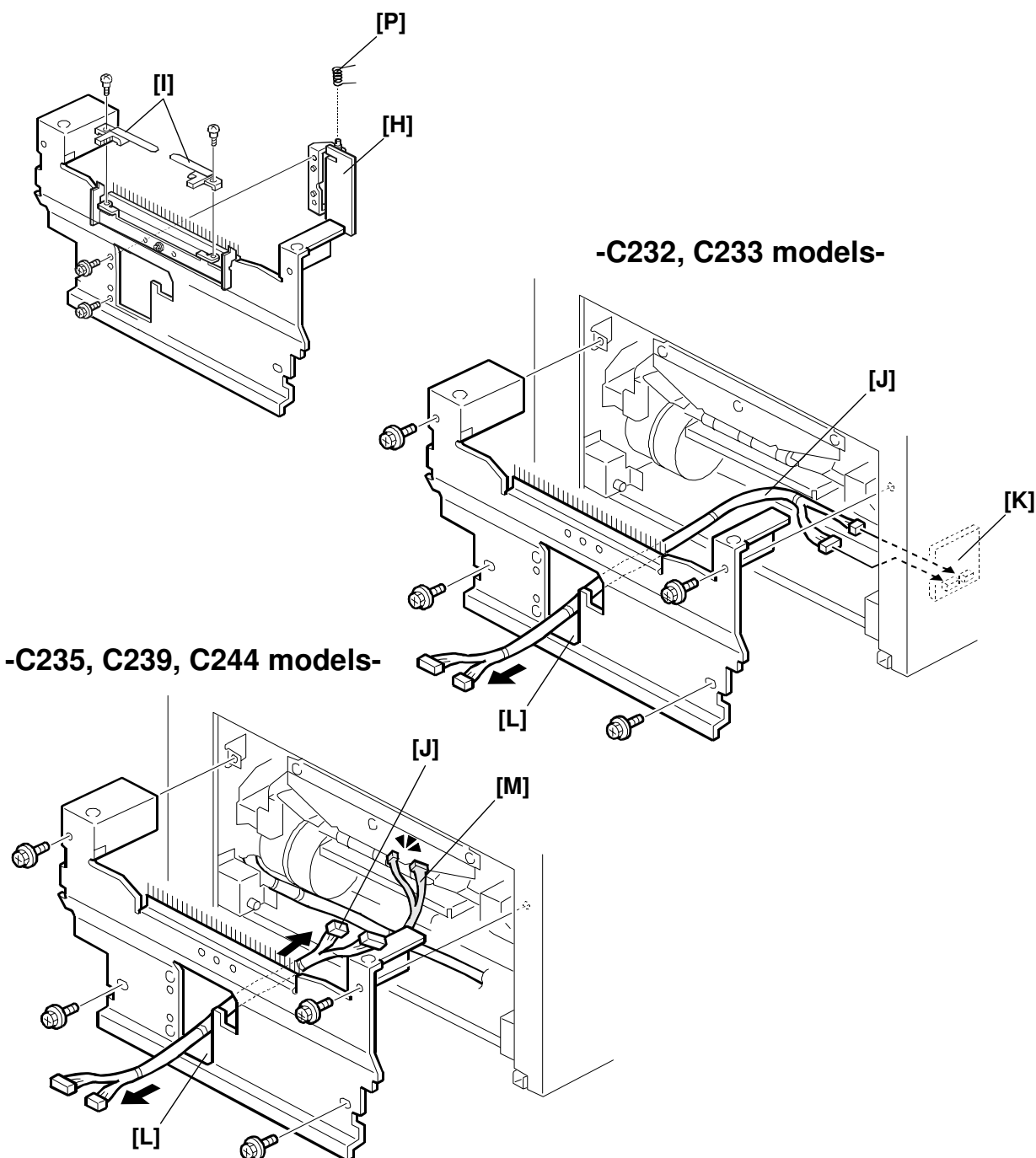
-C235, C239, C244 models-



Model: PRIORT
PEARL/PEARL-MC/RUBY/SAPPHIRE/GARNET/SA2/SA2P

Date: 15-Nov-04

No: R-C229-025



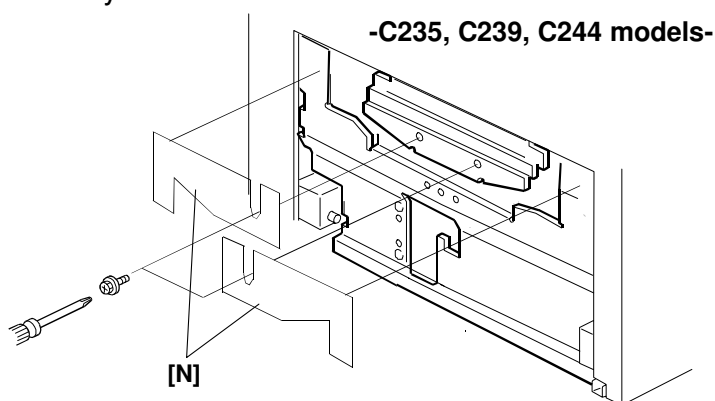
7. Remove the job separator door [H] (2 screws, 1 spring).
Important: Make sure to keep the spring [P].
8. Remove the trailing edge guides [I] from the paper delivery cover (2 stepped screws).

Model: PRIORT
PEARL/PEARL-MC/RUBY/SAPPHIRE/GARNET/SA2/SA2P

Date: 15-Nov-04

No: R-C229-025

9. Connect the job separator relay harness [J] (packed in the accessory bag) to the job separator board [K] (C232, C233 models).
10. Connect the job separator relay harness [J] (packed in the accessory bag) to the job separator harness [M] (C235, C239, C244 models).
11. Re-install the left cover and the air knife unit (removed in Step 3).
12. Re-install the paper delivery unit (removed in Step 5).
13. Re-install the paper delivery cover (removed in Step 4).
Important: Make sure to lead the job separator relay harness [J] through the cutout [L] in the paper delivery cover.



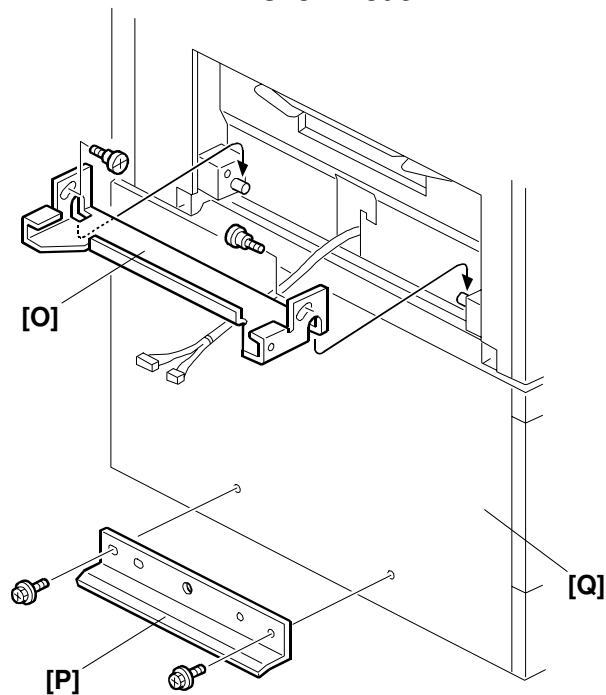
14. Install the exit guide [N] (2 screws). (C235, C239, C244 models)

Model: PRIORT
PEARL/PEARL-MC/RUBY/SAPPHIRE/GARNET/SA2/SA2P

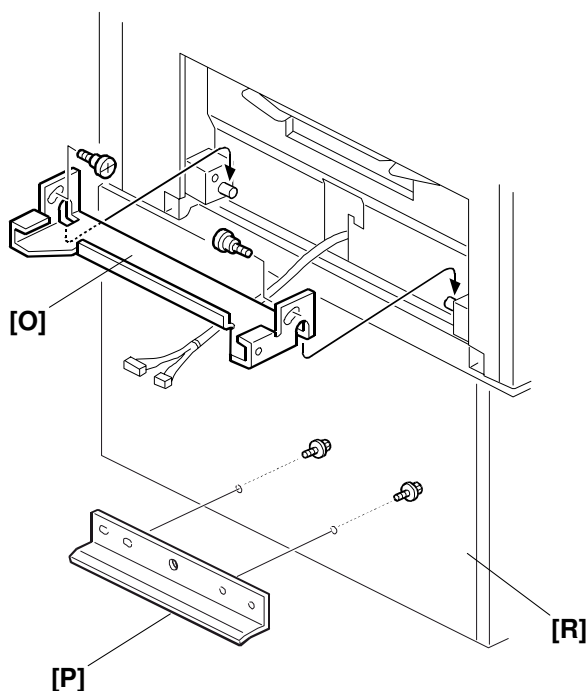
Date: 15-Nov-04

No: R-C229-025

-C232 model-



-C233, C235, C239, C244 models-



15. Install the upper joint bracket [O] (2 stepped screws, packed in the accessory bag).

16. Install the lower joint bracket [P] (2 screws, packed in the accessory bag).

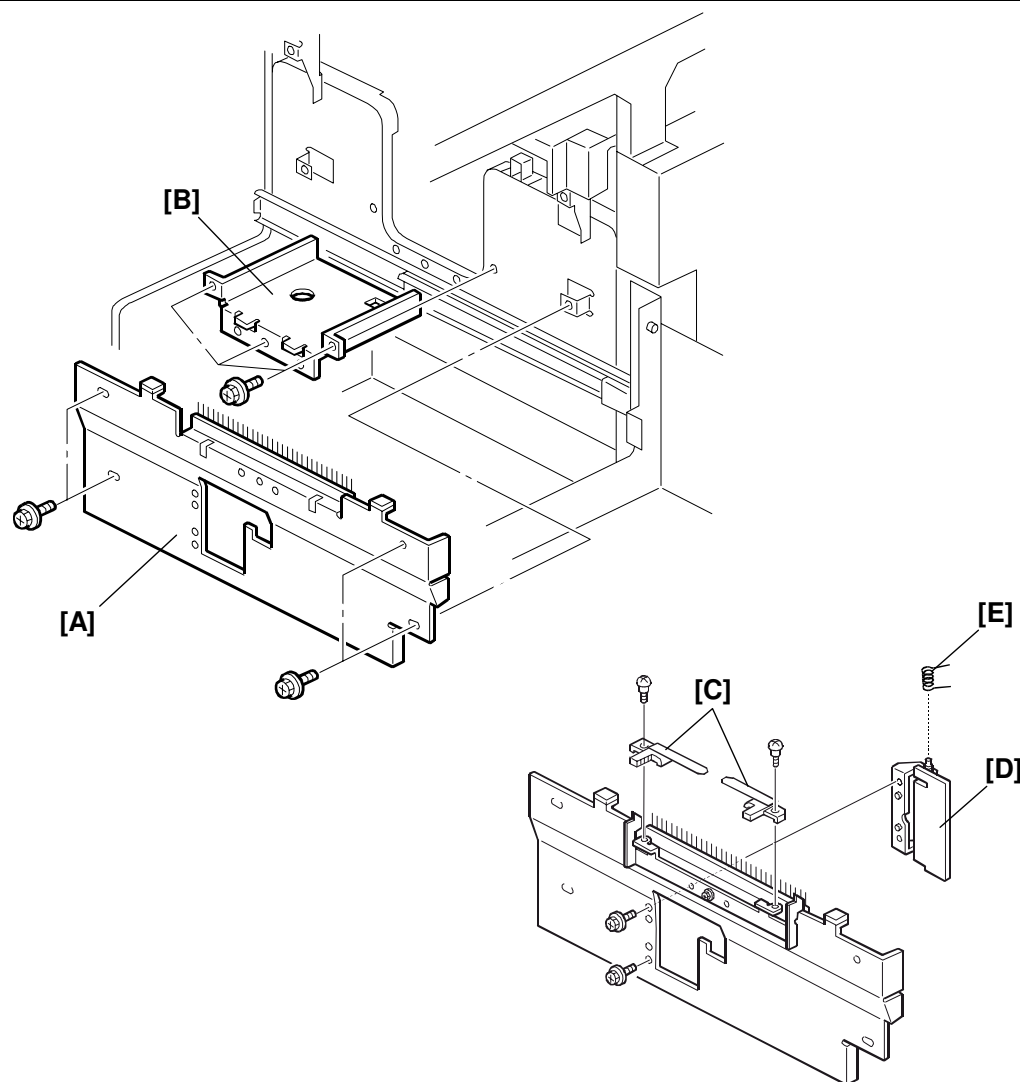
Important: 1) For the C232: Tighten the screws from the outside of the paper bank [Q].

2) For the C233, C235, C239, C244: Tighten the screws from the inside of the table [R].

Model: PRIORT
PEARL/PEARL-MC/RUBY/SAPPHIRE/GARNET/SA2/SA2P

Date: 15-Nov-04

No: R-C229-025



Preparation for Sorter Installation

1. Slide out the delivery table base.
2. Remove the sorter delivery cover [A].
3. Remove the job separator base [B].

Important: For Steps 4 and 5, use the guide, door and screws that you removed in Steps 7 and 8 of the Mainframe Preparation procedure.

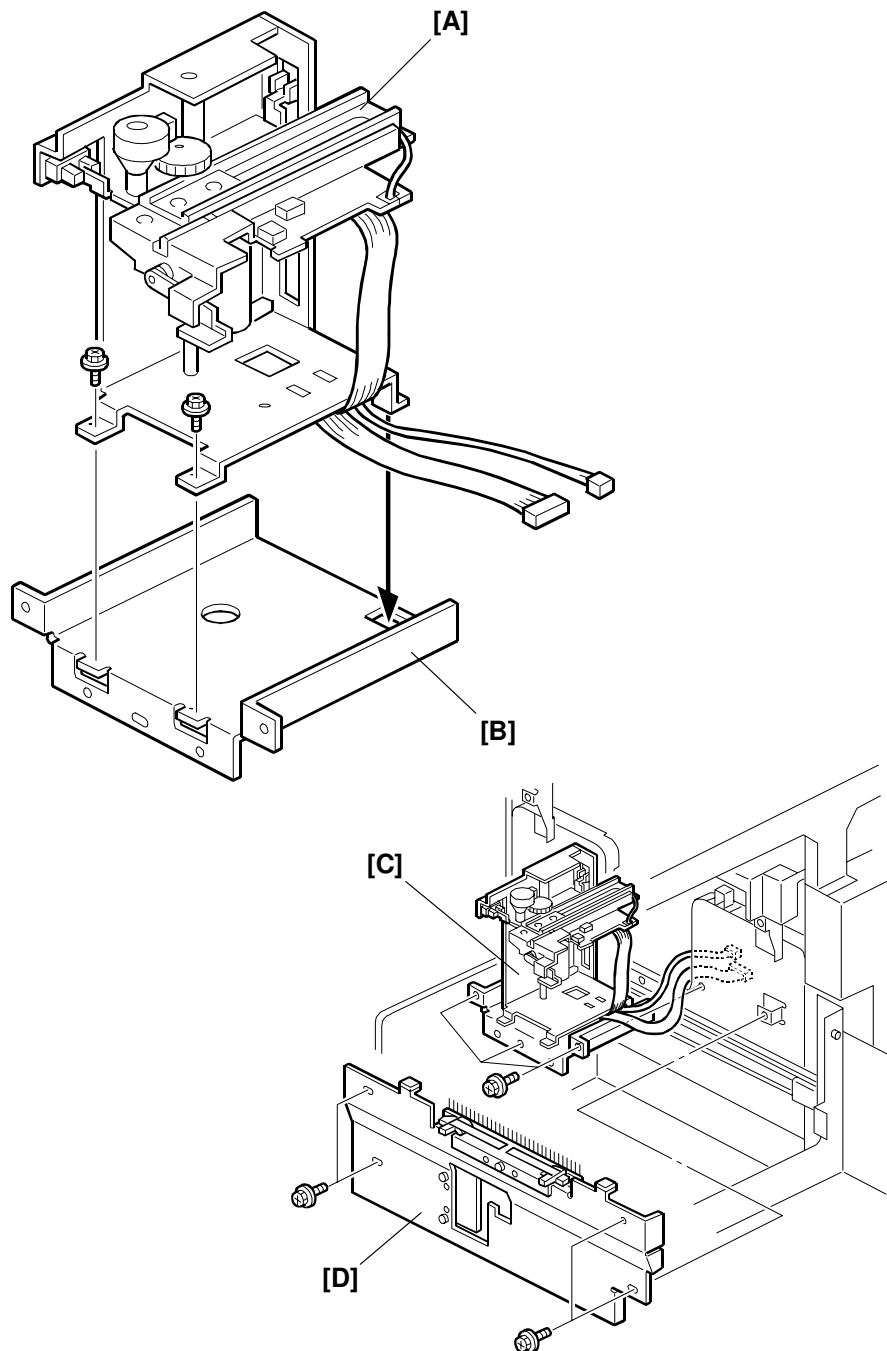
4. Attach the trailing edge guides [C] to the sorter delivery cover [A].
5. Attach the job separator door [D] to the sorter delivery cover [A].

Important: Make sure to attach the spring [E].

Model: PRIORT
PEARL/PEARL-MC/RUBY/SAPPHIRE/GARNET/SA2/SA2P

Date: 15-Nov-04

No: R-C229-025



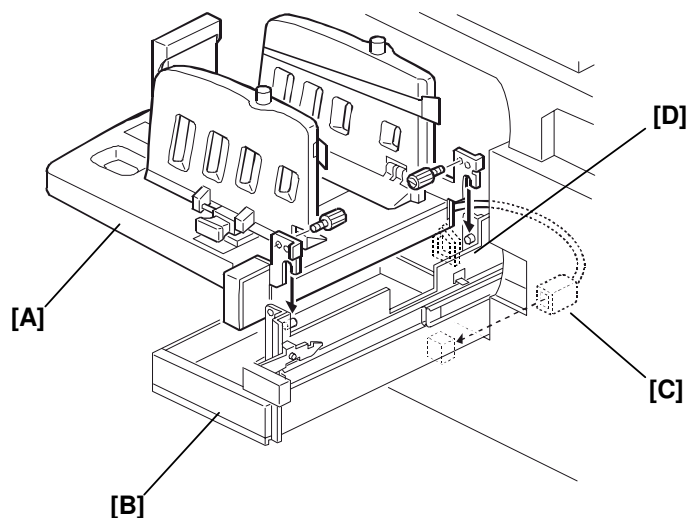
Important: For Step 6, use the job separator unit and screws that you removed in Step 6 of the Mainframe Preparation procedure.

6. Attach the job separator unit [A] to the job separator base [B].
7. Reinstall the job separator base/unit assembly [C].
8. Reinstall the sorter delivery cover [D].

Model: PRIORT
PEARL/PEARL-MC/RUBY/SAPPHIRE/GARNET/SA2/SA2P

Date: 15-Nov-04

No: R-C229-025



9. Reattach the paper delivery table [A] to the base [B] (2 screws).

Note: This paper delivery table was removed in Step 3 of the Paper Delivery Table Installation procedure.

Important: For the C235, C239, C244: Use the screws packed in the accessory bag.

10. **For the C232 only:**

Connect the table cord [C].

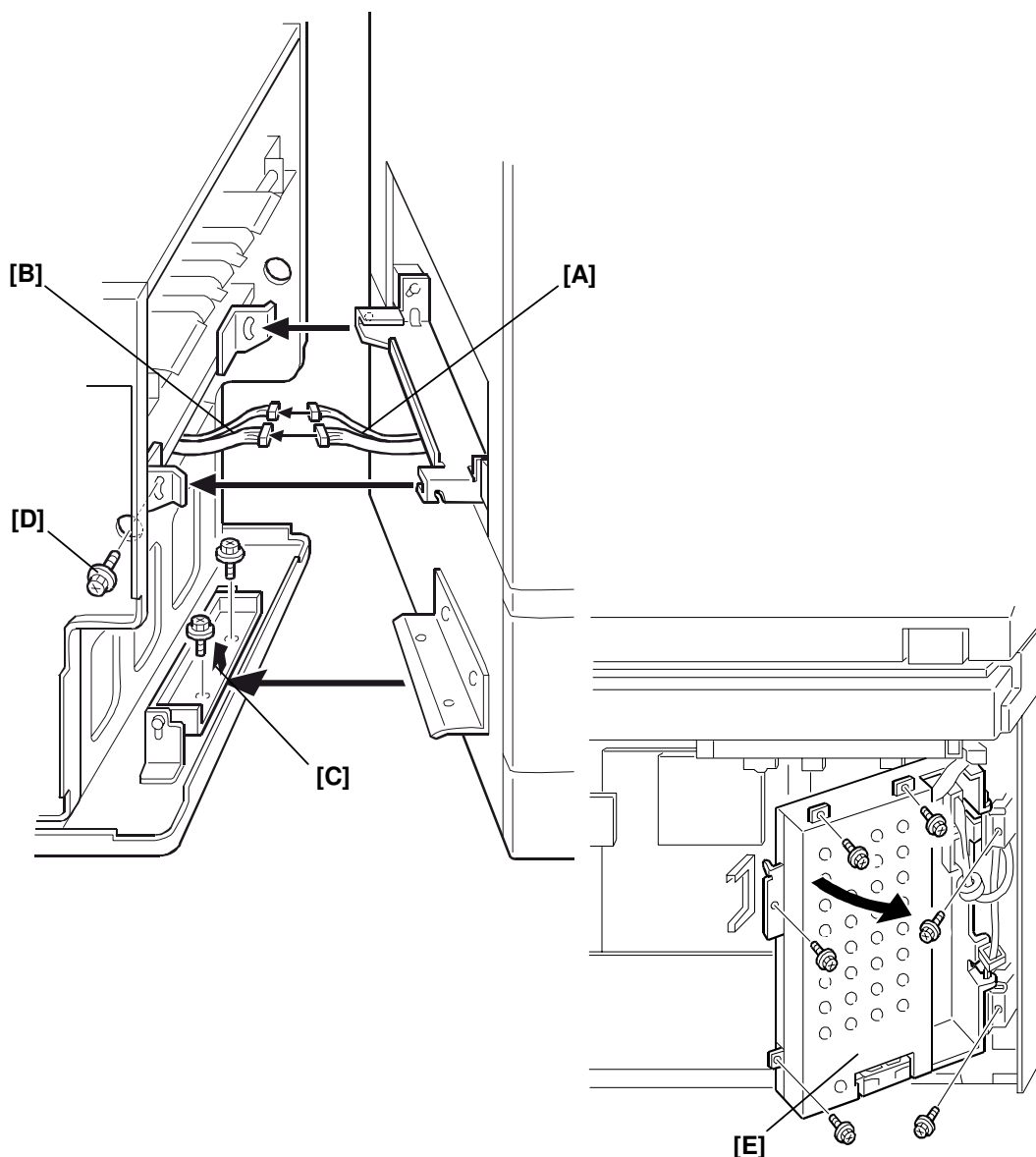
Important: Put the cord [C] inside the clamp [D].

11. Slide the base [B] into the machine.

Model: PRIORT
PEARL/PEARL-MC/RUBY/SAPPHIRE/GARNET/SA2/SA2P

Date: 15-Nov-04

No: R-C229-025



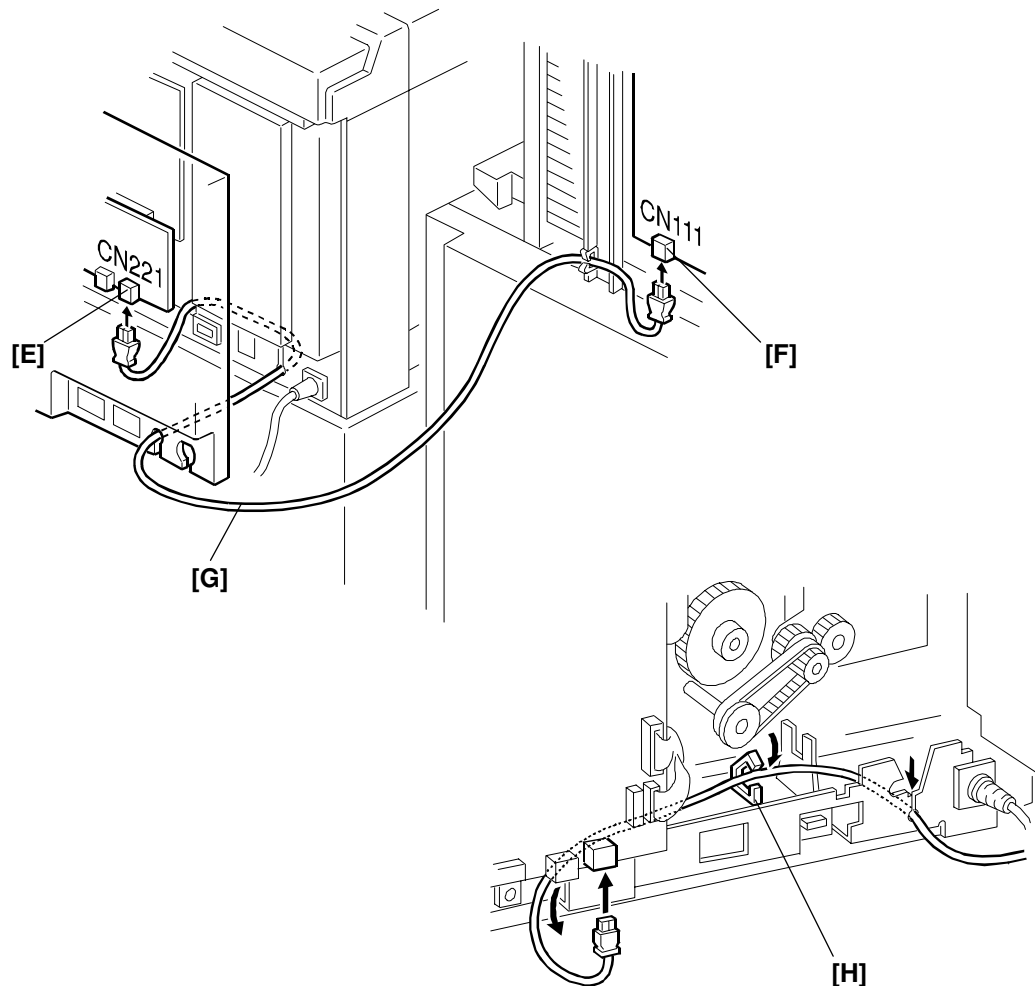
Connecting the sorter to the machine

1. Remove the front right cover (3 screws).
2. Connect the job separator relay harness [A] and the job separator harness [B].
3. Connect the sorter to the mainframe with the lower joint bracket [C] (2 screws) and the upper joint bracket [D] (1 screw).
4. Remove the sorter rear cover.
5. Open the power supply unit [E] (6 screws).

Model: PRIORT
PEARL/PEARL-MC/RUBY/SAPPHIRE/GARNET/SA2/SA2P

Date: 15-Nov-04

No: R-C229-025



6. Connect the optical fiber cable [G] (packed in the accessory bag) to CN221 [E] on the I/O board and CN111 [F] on the sorter main board.

Important: 1) Make sure to lead the cable [G] as shown above.
2) Put the cable [G] in the clamp [H].

7. Reinstall the power supply unit.
8. Reattach the two rear covers.
9. Reattach the front right cover.
10. Attach the front lower cover (packed in the accessory bag).
11. Lock the casters of the sorter.
12. Insert the power plug in the wall outlet firmly.
13. Turn the main switch on.
14. Push the sort key.
15. Make some test prints to make sure the machine is working normally.