

| | | | |
|--|--|---|-----------------------|
| Model: PRIPORT HP4/HP4P/HP4-R2/HP4-R2P ver/HP4-R2CD ver | | Date: 29-Jun-06 | No: R-C249-021 |
| Subject: New Model HP4-R2 P/CD/CD P information (China only) | | Prepared by: M. Kanomata, Priport Service Planning Section | |
| Classification: | <input type="checkbox"/> Troubleshooting <input type="checkbox"/> Part information <input type="checkbox"/> Action required <input type="checkbox"/> Mechanical <input type="checkbox"/> Electrical <input checked="" type="checkbox"/> Service manual revision <input type="checkbox"/> Paper path <input type="checkbox"/> Transmit/receive <input type="checkbox"/> Retrofit information <input checked="" type="checkbox"/> Other (New model information) | | |
| Model Name: HP4: Ricoh JP4500, Gestetner CP6244, RexRotary CP6244, nashuatec CP6244, Savin 3560DNP, Standard SD420, Lanier LDD145 HP4P (China only): Ricoh JP4510P, Gestetner CP6254P HP4-R2: Ricoh DX4542/DX4242C, Gestetner CP6244+/CP6450C/DX4542, RexRotary DX4542, nashuatec DX4542, Savin 3270DNP, Standard SD430, Lanier LDD245 HP4-R2 P (China only): Ricoh DX4542CP, Gestetner CP6450P HP4-R2 A3CD (China only): Ricoh DX4543C, Gestetner CP6451C HP4-R2 B4CD (China only): Ricoh DX4443C, Gestetner CP6401C HP4-R2 A3CD P (China only): Ricoh DX4543CP, Gestetner CP6451P HP4-R2 B4CD P (China only): Ricoh DX4443CP, Gestetner CP6401P | | | |

IMPORTANT INFORMATION ON THE CHINA-RELEASED HP4-R2 MODELS

- This RTB explains the following:
 - 1) All service-related information unique to the following HP4-R2 models, which will be released in China only.
 - HP4-R2 P (A3 only)
 - HP4-R2 A3 CD
 - HP4-R2 B4 CD
 - HP4-R2 A3 CD P
 - HP4-R2 B4 CD P
 - 2) The differences between:
 - **A3 models and B4 models** (from pg. 2)
 - **Standard versions and P versions** (from pg. 9)
 - **Standard versions and CD versions** (from pg. 13)
- **Note:**
 - The HP4-R2 P only features an A3 model. (There is no B4 model.)
 - The CD P version is a combination of the CD version and P version.

Model: PRIORT HP4/HP4P/HP4-R2/HP4-R2P ver/HP4-R2CD ver

Date: 29-Jun-06

No: R-C249- 021

OVERALL INFORMATION

DIFFERENT SECTIONS BETWEEN THE A3 MODEL AND B4 MODEL

| Section | Item | Remark |
|---------|-------------------------------|--------------------------|
| 1 | Installation | Some items added. |
| 2 | Preventive maintenance | No differences |
| 3 | Replacement and adjustment | No differences |
| 4 | Troubleshooting | Some items added |
| 5 | Service tables | Some items added |
| 6 | Detailed section descriptions | Some items added |
| 7. | Point to Point diagram | Some items added |
| Spec | Specifications | Some items added |

1. INSTALLATION

1.1 INSTALLATION PROCEDURE

1.2.5 OPTIONAL DRUMS

- B4 models support only one type of optional drum unit: the B4 size: Color drum. The B4 model does not support the A4 black drum.

Model: PRIPORT HP4/HP4P/HP4-R2/HP4-R2P ver/HP4-R2CD
ver

Date: 29-Jun-06

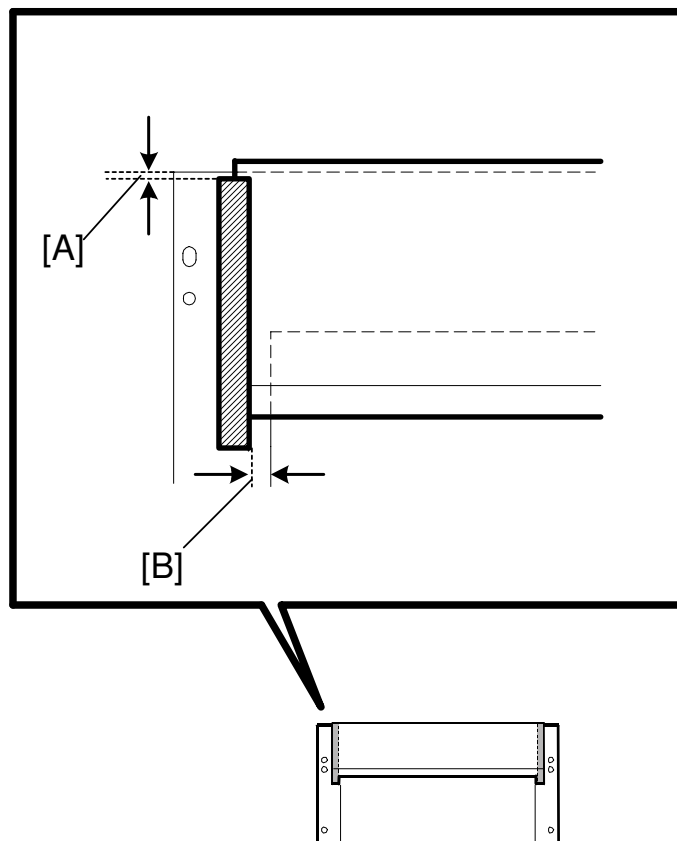
No: R-C249-021

3. REPLACEMENT AND ADJUSTMENT

3.8.4 MYLAR SEAL

- The attachment position on the B4 model is different from that of the A3 and A4 models.
Important: Clean the attachment area with isopropyl alcohol.

Attachment position for B4 models:



[A]: -0.5 to 0.5 mm

[B]: 4.9 to 6.5 mm

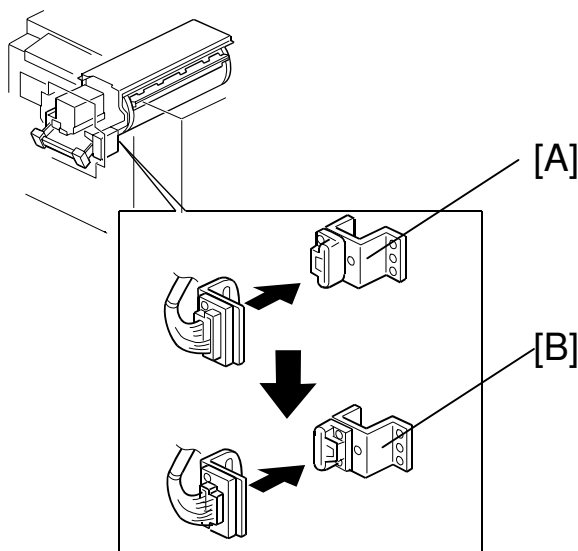
4. TROUBLESHOOTING

4.3 FUSE, LED, VR, DIP-SW, AND TP TABLES

4.3.4 DIP SWITCHES

Ink detection board

| NO. | Normal drum (B4) | Color drum (B4) |
|-----|------------------|-----------------|
| SW1 | OFF | OFF |
| SW2 | OFF | ON |
| SW3 | OFF | OFF |
| SW4 | OFF | OFF |



- As mentioned above, B4 models only support B4 drums.
- To ensure that the A3/A4 drum cannot be installed on the B4 model, the direction of the connector was changed from [A] to [B] (see above).

5. SERVICE TABLES

5.3 MAIN MENU NO.2: BASIC SETTINGS

5.3.1 SP TABLE

| No. | Menu Items | Default | Settings |
|------|------------------------|---------|----------|
| 2-41 | T/H energy control: B4 | 12 | 0 to 50% |

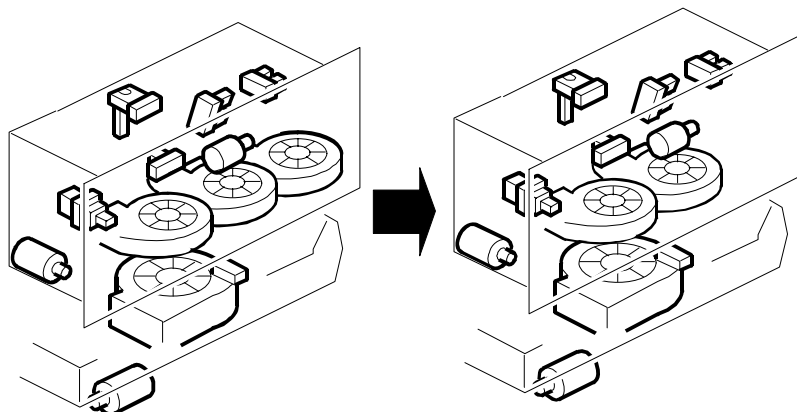
5.3.10 SP2-41, 2-42: THERMAL HEAD ENERGY CONTROL

- The default for B4 mode is 12%. The means that during normal printing, the thermal head energy is 88% of the maximum possible T/H energy level.

6. DETAILED SECTION DESCRIPTIONS

6.1 MACHANISM OVERVIEW

6.1.2 ELECTRICAL COMPONENT LAYOUT



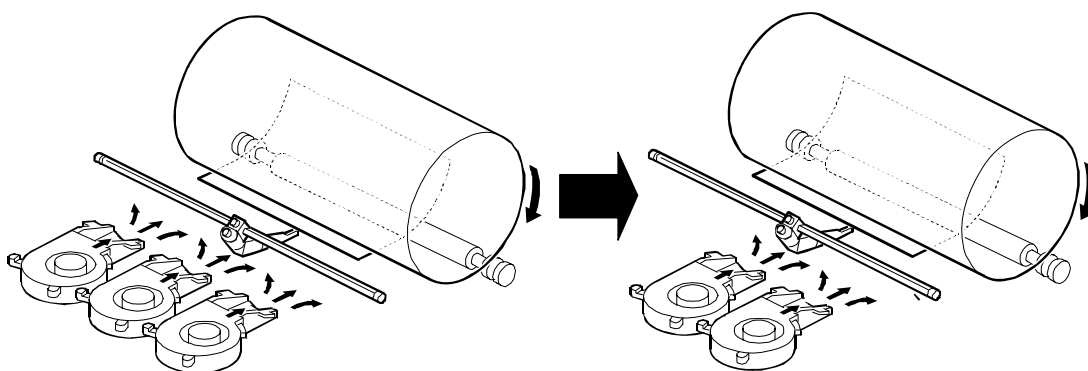
- The number of air knife fan motors was decreased from 3 to 2. This is because the size of the printable image area was decreased.

6.5.12 CUTTER MECHANISM

- The cutter cuts a master of about 490mm in length when a B4 drum is used.

6.8.3 PAPER SEPARATION FROM THE DRUM

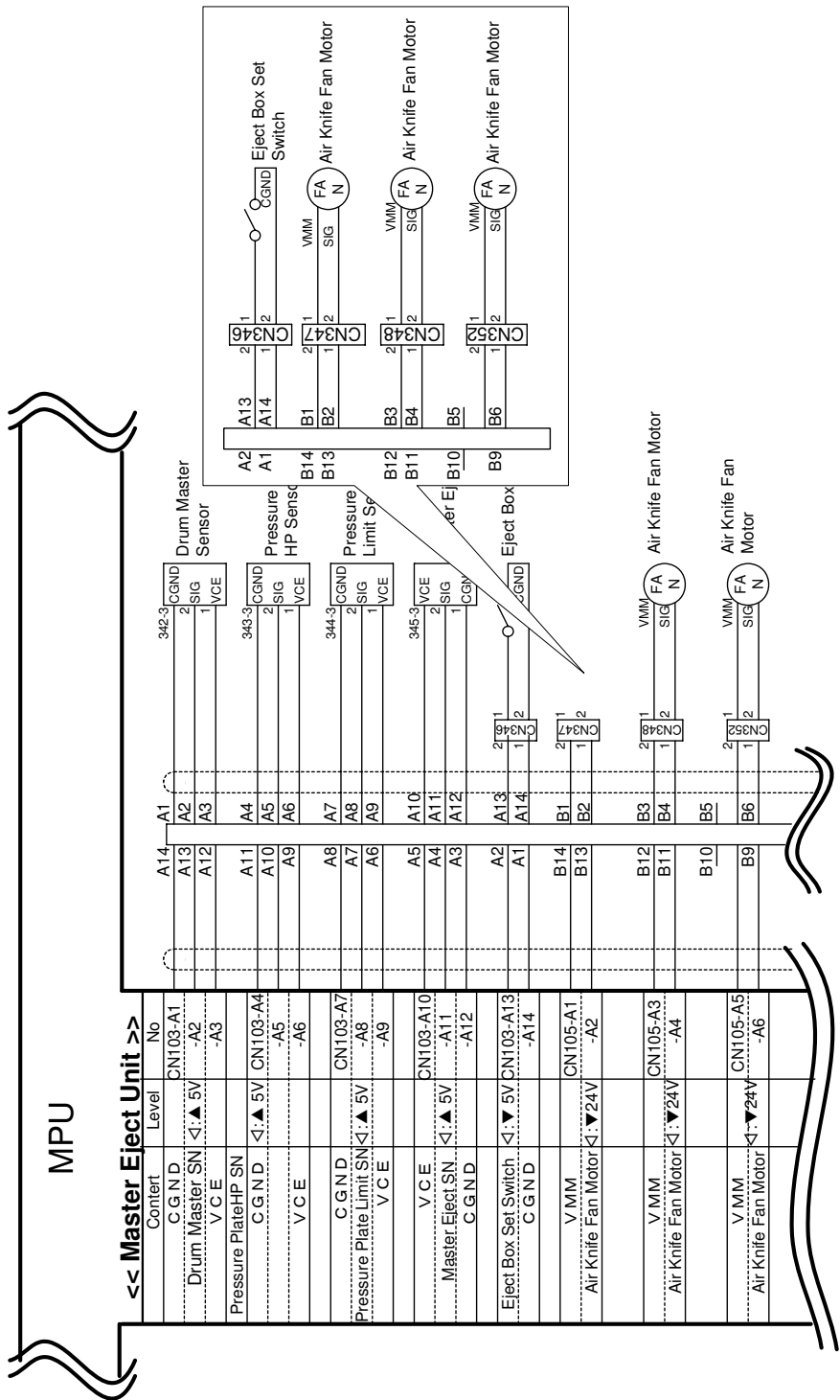
Air knife fan



- The number of air knife fan motors was decreased from 3 to 2. This is because the size of the printable image area was decreased.

7. POINT TO POINT DIAGRAM

- The number of air knife fan motors was decreased from 3 to 2. CN347 is not used to connect the air knife fan motor on the B4 model.



Model: PRIPORT HP4/HP4P/HP4-R2/HP4-R2P ver/HP4-R2CD ver

Date: 29-Jun-06

No: R-C249- 021

SPECIFICATIONS

GENERAL SPECIFICATIONS

- The specifications are the same as those of the A3 model, **except for** the following differences:

Printing Area: 251mm x 355mm

Power Source: China

220-240V, 50/60Hz

Master Processing Time: No more than 28 seconds (B4 copying)

Master Type: **Thermal master roll type:** 280mm width, 110m/roll

Yield: 220 masters/roll

Optical Equipment: B4 color drum

Model: PRIPORT HP4/HP4P/HP4-R2/HP4-R2P ver/HP4-R2CD
ver

Date: 29-Jun-06

No: R-C249- 021

OVERALL INFORMATION

DIFFERENT SECTIONS BETWEEN STANDARD VERSION AND P VERSION MODEL

| Section | Item | Remark |
|---------|-------------------------------|-------------------------|
| 1 | Installation | No differences |
| 2 | Preventive maintenance | No differences |
| 3 | Replacement and adjustment | No differences |
| 4 | Troubleshooting | No differences |
| 5 | Service tables | No differences |
| 6 | Detailed section descriptions | No differences |
| 7. | Point to Point diagram | No differences |
| Spec | Specifications | Some items added |
| CLT | Printer controller unit | New documents |

SPECIFICATIONS

GENERAL SPECIFICATIONS

- The specifications for the standard version and P version are the same, **except for** the following differences:

Printer controller unit: Embedded Printer controller unit (VC-20) fitted as standard.

Printer driver: Drivers support Chinese

PRINTER CONTROLLER UNIT

INSTALLATION

- P versions are equipped with a standard printer controller unit and Video I/F board.
- Connect the printer controller unit to the host computer with a USB cable. Then, install the printer driver in the host computer.

| | |
|-----------------------------|--|
| Computer | PC/AT compatible PC |
| Interface | USB1.1, USB2.0 (Full speed) Compatible |
| Operating Systems Supported | Windows 98se/ME, Windows 2000/XP/Server 2003 |
| Drivers | VC-20 A3 400 GDI (A3 model) VC-20 B4 400 GDI (B4 model) |

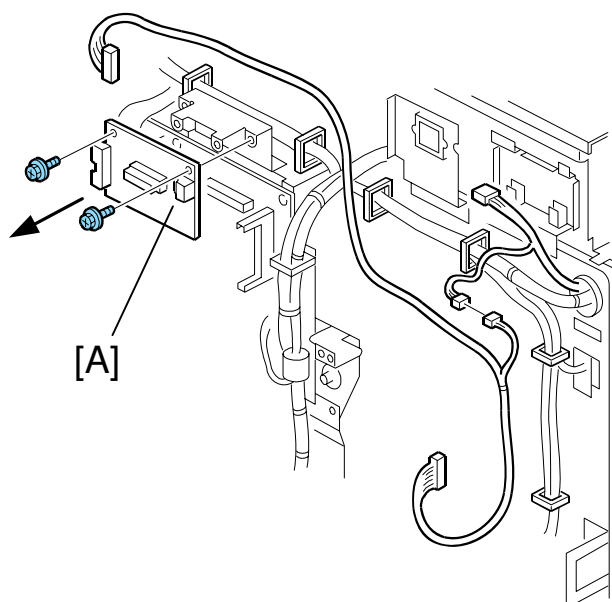
REPLACEMENT AND ADJUSTMENT

⚠ CAUTION

Before removing any of the controller components, make sure to do the following:

1. Turn the machine main power OFF.
Important: If the “Data-in” lamp on the operation panel is blinking or lit, turn the power OFF after the document or report is printed.
2. After the power is OFF, disconnect the power cord from the outlet.
Then, disconnect the power cable from the machine.

[A]: Video I/F Board



SERVICE TABLES

There are no SP modes for the printer controller unit.

Model: PRIPORT HP4/HP4P/HP4-R2/HP4-R2P ver/HP4-R2CD ver**Date:** 29-Jun-06**No:** R-C249- **021**

SPECIFICATIONS

| | |
|-----------------------------|--|
| Controller Type | Embedded |
| Configuration | Internal embedded controller |
| Printer Language | GDI |
| Print Resolution | 400 dpi |
| On Board Memory | 16MB |
| Resident Font | None |
| | |
| Interface | USB1.1, USB2.0 (Full speed) Compatible |
| Operating Systems Supported | Windows 98se/ME, Windows 2000/XP/Server 2003 |
| Drivers* | VC-20 A3 400 GDI (A3 model) VC-20 B4 400 GDI (B4 model) |

*: Common between Ricoh and Gestetner brands.

OVERALL INFORMATION

DIFFERENT SECTIONS BETWEEN STANDARD VERSION AND CD VERSION MODELS

- **CD** versions are the lower-cost versions of the HP4-R2, and have the following features.
 - Conventional paper delivery tray (without buffer fins).
 - No soundproof cushions.