

Model: PRIPORT Platinum/Platinum P/Platinum2		Date: 3-Sep-08	No: R-C267-001e
Subject: Firmware Modification History		Prepared by: K. Yamamoto, Priport Service Planning Section	
Classification:	<input type="checkbox"/> Troubleshooting <input type="checkbox"/> Part information <input type="checkbox"/> Action required <input type="checkbox"/> Mechanical <input type="checkbox"/> Electrical <input type="checkbox"/> Service manual revision <input type="checkbox"/> Paper path <input type="checkbox"/> Transmit/receive <input type="checkbox"/> Retrofit information <input checked="" type="checkbox"/> Other ()		
Model Name: Platinum: Ricoh DX3340/DX3440C/DX3240, Gestetner CP6146/DX3440/CP6300C/DX3240, Savin 3180DNP, Lanier LDD120, RexRotary DX3440/DX3240, nashuatec DX3440/DX3240, Standard SD360 Platinum P (China only): Ricoh DX3440CP, Gestetner CP6300P Platinum 2: Ricoh DX3442/DX3442C/DX3242, Gestetner DX3442/CP6301C/DX3242, Rotary DX3442/DX3242, nashuatec DX3442/DX3242			

This is to inform you of the firmware history for the Platinum/Platinum2

FIRMWARE MODIFICATION HISTORY

PLATINUM

Version	File Name	C. SUM	Production
C2715105C	C2715105C.bin	8BE3	September 2008 production
C2715105B	C2715105B.bin	A128	March 2008 production
C2715105A	C2715105A.bin	8CC9	March 2008 production
C2675105E	C2675105E.bin	B60A	September 2006 production
C2675105B	C2675105B.bin	FF43	1st Mass Production

Symptom Corrected	Version
Other changes: New SP modes were added: SP2-34: Proof Print Adjustment SP2-35: Number of Proof Print Note: These SP modes adjust the paper feed speed during the trial print. Use them when it is necessary to print out several sheets in order to fill the ink on the master (=when light, pale images occur at the beginning when printing several sheets). See RTB #RC267008 for details. Symptom corrected: Multi-feeds occur in the ADF (the original stopper at the ADF does not move).	C2715105C
Symptom corrected: Sometimes the scanner overshoots the stop position, which causes the leading edge to appear light/pale.	C2715105B

Model: PRIPORT Platinum/Platinum P/Platinum2	Date: 3-Sep-08	No: R-C267-001e
---	-----------------------	------------------------

Symptom Corrected	Version
<p>Symptom corrected: The B-jam condition may occur (there is no jammed paper) when the machine recovers from Energy Saver mode and makes a new master or starts printing. (The condition can only be cleared by turning the main power OFF/ON).</p> <p>Important: This new firmware is common to both the Platinum and Platinum2. If you replace the NV-RAM when this firmware is installed, make sure to program the following information in the old NVRAM to the new NVRAM: Machine code (SP2-4), Serial number (SP3-3), image adjustments (see Service Manual sec. 5.7.6), and all SP mode settings that were changed from their defaults.</p>	C2715105A
<p>Symptom corrected: The display for the Memory Mode setting in UP mode does not change to "Stack Mode" after the setting itself is changed to Stack Mode.</p> <p>Other changes: The graphic icon on the LCD for Erase Border was changed so that it matches the key on the operation panel.</p>	C2675105E
-	C2675105B

Model: PRIPORT Platinum/Platinum P/Platinum2

Date: 3-Sep-08

No: R-C267-001e

PLATINUM2

Version	File Name	C. SUM	Production
C2715105C	C2715105C.bin	8BE3	September 2008 production
C2715105B	C2715105B.bin	A128	March 2008 production
C2715105A	C2715105A.bin	8CC9	March 2008 production
C2715105	C2715105.bin	4B0F	1 st Mass production

Symptom Corrected	Version
<p>Other changes: New SP modes were added: SP2-34: Proof Print Adjustment SP2-35: Number of Proof Print Note: These SP modes adjust the paper feed speed during the trial print. Use them when it is necessary to print out several sheets in order to fill the ink on the master (=when light, pale images occur at the beginning when printing several sheets). See RTB #RC267008 for details.</p> <p>Symptom corrected: Multi-feeds occur in the ADF (the original stopper at the ADF does not move).</p>	C2715105C
<p>Symptom corrected: Sometimes the scanner overshoots the stop position, which causes the leading edge to appear light/pale.</p>	C2715105B
<p>Symptom corrected: The B-jam condition may occur (there is no jammed paper) when the machine recovers from Energy Saver mode and makes a new master or starts printing. (The condition can only be cleared by turning the main power OFF/ON). Important: This new firmware is common to both the Platinum and Platinum2. If you replace the NV-RAM when this firmware is installed, make sure to program the following information in the old NVRAM to the new NVRAM: Machine code (SP2-4), Serial number (SP3-3), image adjustments (see Service Manual sec. 5.7.6), and all SP mode settings that were changed from their defaults.</p>	C2715105A
-	C2715105

Model: PRIPORT Platinum/Platinum P		Date: 23-Oct-06	No: R-C267-002
Subject: Durability of the cloth screen is not enough		Prepared by: K. Yamamoto, Priport Service Planning Section	
Classification:	<input checked="" type="checkbox"/> Troubleshooting <input type="checkbox"/> Mechanical <input type="checkbox"/> Paper path <input type="checkbox"/> Other ()	<input type="checkbox"/> Part information <input type="checkbox"/> Electrical <input type="checkbox"/> Transmit/receive	<input checked="" type="checkbox"/> Action required <input type="checkbox"/> Service manual revision <input type="checkbox"/> Retrofit information
Model Name: Platinum: Ricoh DX3340/DX3440C/DX3240, Gestetner CP6146/DX3440/CP6300C/DX3240, Savin 3180DNP, Lanier LDD120, RexRotary DX3440/DX3240, nashuatec DX3440/DX3240, Standard SD360 Platinum P (China only): Ricoh DX3440CP, Gestetner CP6300P			

NOTE: This RTB only applies to the black drum.

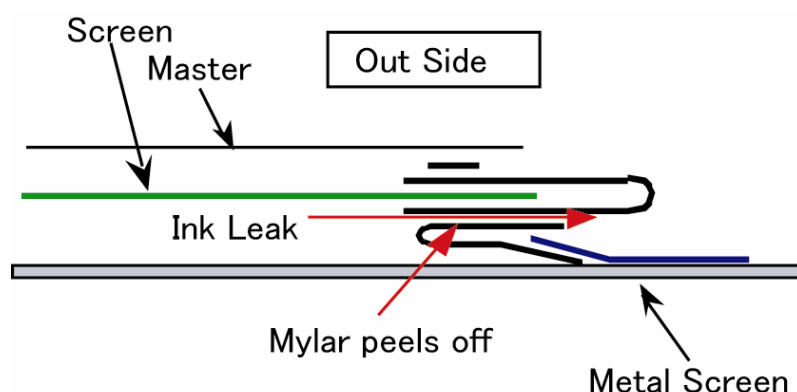
SYMPTOM

The ink leaks from the trailing edge of the cloth screen on the black drum.

NOTE: This does not occur on color drums, because the structure of the cloth screen on the color drum is different from that on the black drum.

CAUSE

The Mylar peels off the cloth screen during printing, causing the ink to leak from between the Mylar and cloth screen.



Model: PRIPORT Platinum/Platinum P

Date: 23-Oct-06

No: R-C267-002

SOLUTION

The cloth screen for the black drum was changed to the one that is used on optional drums.

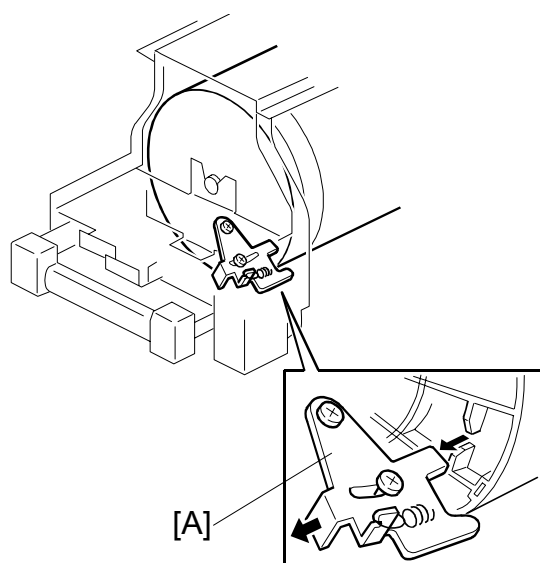
Note:

- This same type of screen is also used on the TT-II.
- See MB # MC267003 for more P/N information.

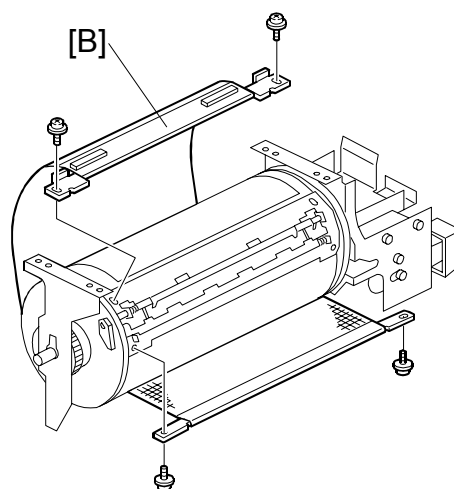
Size	Old	New
B4	C2672335	C2522340
LG	C2672336	C2522341
A4	C2672337	C2522342

REPLACEMENT PROCEDURE

Replacement



C267R909.WMF



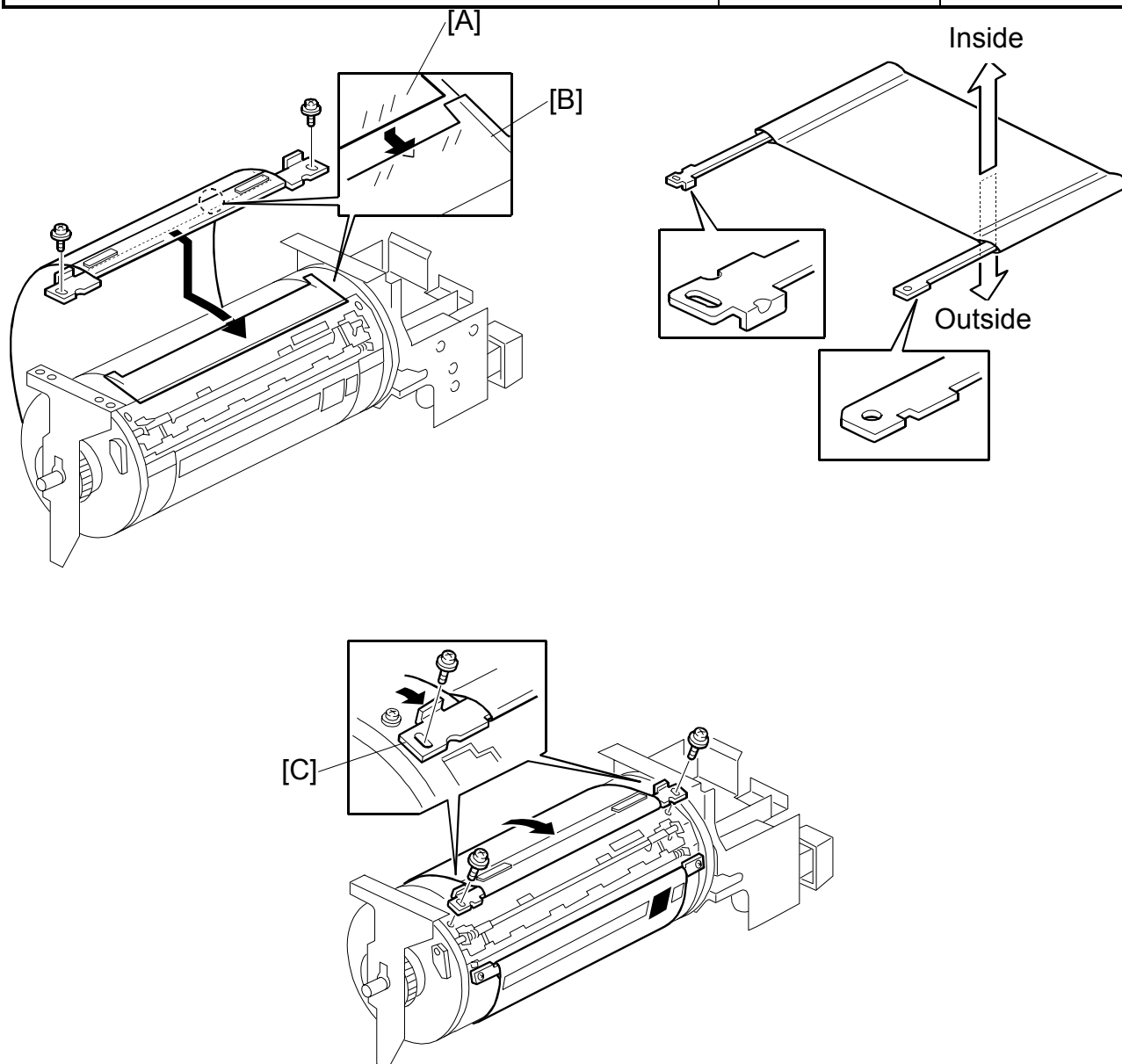
F

Remove the drum

1. Remove the drum upper bracket (⌘ x 4).
2. Release the stopper [A], then rotate the drum until the master clamber faces top.
3. Remove the cloth screen [B] (⌘ x 4).

Model: PRIPORT Platinum/Platinum P

Date: 23-Oct-06

No: R-C267-002


- Do not scratch the cloth screen and metal screen.
- Properly insert the edge of the cloth screen [A] under the mylar [B] on the metal screen, as shown above.
Otherwise, ink will leak from the trailing edge of the master on the drum during a long printing run.
- Make sure that the correct side of the screen is facing up. In addition, make sure that the stays for securing the cloth screen are positioned correctly.
- When replacing the cloth screen, spread the screen around the metal screen while pulling the stay [C]. Adjust the stay so that it is parallel to the master clumper, then tighten the screws.
- Make sure that the cloth screen is not wrinkled while spreading it around the drum.

Model: PRIPORT Platinum/Platinum P		Date: 11-Oct-07	No: R-C267-003
Subject: Supplementary explanation of print speed		Prepared by: K. Yamamoto, Priport Service Planning Section	
Classification:	<input type="checkbox"/> Troubleshooting <input type="checkbox"/> Mechanical <input type="checkbox"/> Paper path <input type="checkbox"/> Other ()	<input type="checkbox"/> Part information <input type="checkbox"/> Electrical <input type="checkbox"/> Transmit/receive	<input type="checkbox"/> Action required <input checked="" type="checkbox"/> Service manual revision <input type="checkbox"/> Retrofit information
Model Name: Platinum: Ricoh DX3340/DX3440C/DX3240, Gestetner CP6146/DX3440/CP6300C/DX3240, Savin 3180DNP, Lanier LDD120, RexRotary DX3440/DX3240, nashuatec DX3440/DX3240, Standard SD360 Platinum P (China only): Ricoh DX3440CP, Gestetner CP6300P			

This RTB applies only for the Chinese model.

The Service Manual was changed as follows:

- **Add** the following explanation about print speed.

The print speed should be set to **80 sheets/minute** when using thin paper (35.5 to 55.5g/m²) or thick paper (thicker than 81.6 g/m²).

If any problems with paper feed occur under these conditions, decrease the paper feed speed.

Note: The above information is also printed on a sheet of paper and inserted in the operating instructions.

Model: PRIPORT Platinum/Platinum P		Date: 8-Nov-07	No: R-C267-004
Subject: Paper wrinkle - Paper Feed guide		Prepared by: K. Yamamoto, Priport Service Planning Section	
Classification:	<input checked="" type="checkbox"/> Troubleshooting <input type="checkbox"/> Mechanical <input type="checkbox"/> Paper path <input type="checkbox"/> Other ()	<input type="checkbox"/> Part information <input type="checkbox"/> Electrical <input type="checkbox"/> Transmit/receive	<input type="checkbox"/> Action required <input type="checkbox"/> Service manual revision <input type="checkbox"/> Retrofit information
Model Name: Platinum: Ricoh DX3340/DX3440C/DX3240, Gestetner CP6146/DX3440/CP6300C/DX3240, Savin 3180DNP, Lanier LDD120, RexRotary DX3440/DX3240, nashuatec DX3440/DX3240, Standard SD360 Platinum P (China only): Ricoh DX3440CP, Gestetner CP6300P			

SYMPTOM

Paper wrinkles occur when using thin paper.

CAUSE

The paper is thinner than specification, or the print speed is too high for the type of paper used.

Note: The specifications for paper weight are as follows.

47.1 to 209.3 g/m²

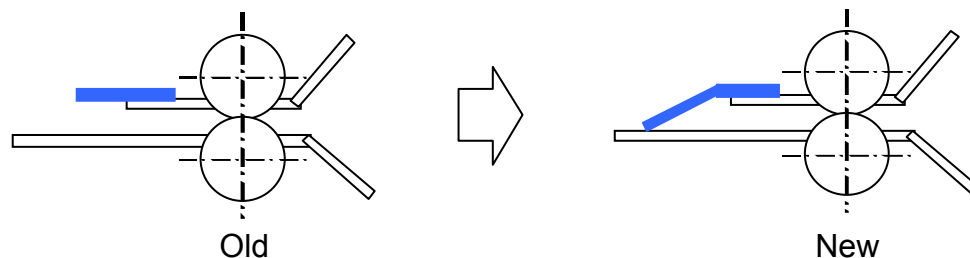
35 to 127.9 g/m² (Chinese model only)

SOLUTION

- Use paper that satisfies the paper weight requirements specified above.
- Decrease the printing speed.
Note: The printing speed should be 80 sheets/minute for thin paper that is less than 52.5g/m².
- Try different combinations of the above two actions, as the results can also depend on environmental conditions and specific paper type.
- Replace the paper guide Mylar.
Note: See below for the **Installation Procedure**, and **MB #MC267008** for the parts number information.

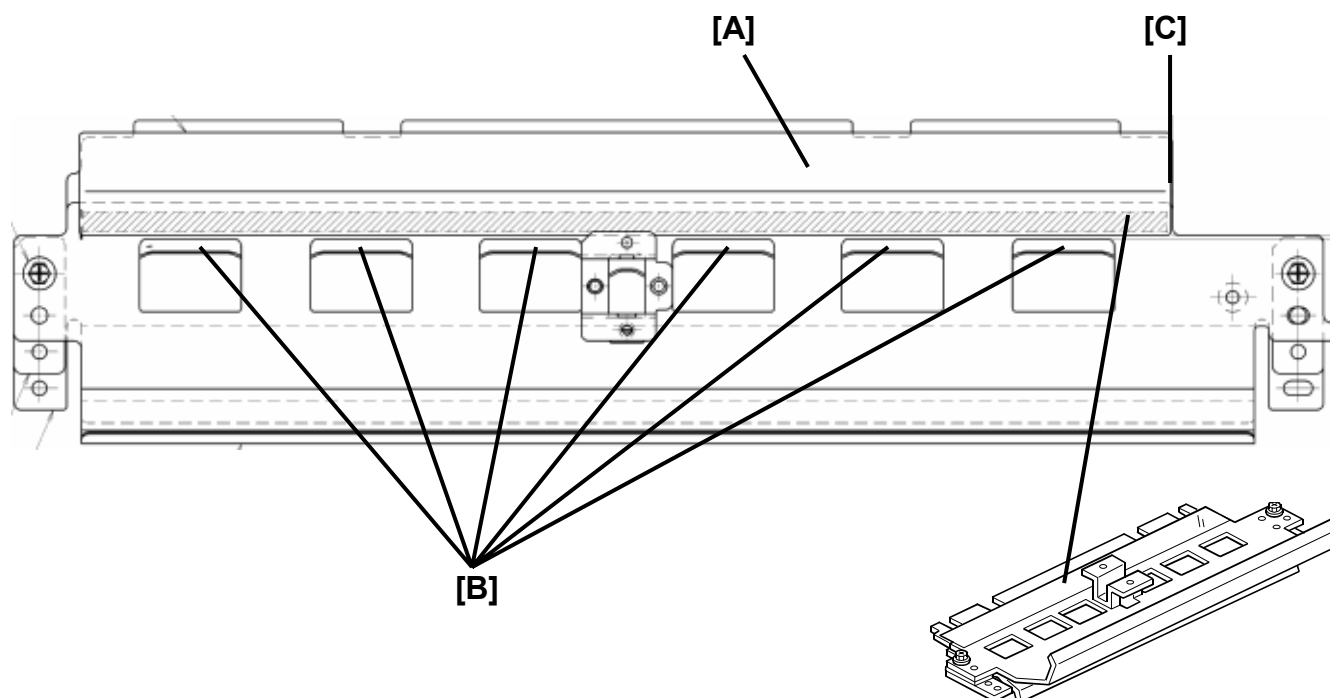
INSTALLATION PROCEDURE FOR THE MYLAR

Difference



Procedure

1. Remove the drum.
2. Open the master eject unit carefully.
3. Remove the old Mylar.
4. Clean the paper feed guide [A] and remove the glue.



5. Attach the new Mylar

Position of the Mylar

1. Align the edge of the Mylar with the bumps [B], as shown above.
2. Make sure that the edge of Mylar is aligned with the edge of the guide [C].
3. The attachment position is the same for both the old and new Mylars.

Model: PRIPORT Platinum/Platinum P		Date: 9-Nov-07	No: R-C267-005
Subject: Paper wrinkle for thin paper		Prepared by: K. Yamamoto, Priport Service Planning Section	
Classification:	<input checked="" type="checkbox"/> Troubleshooting <input type="checkbox"/> Part information <input type="checkbox"/> Action required <input type="checkbox"/> Mechanical <input type="checkbox"/> Electrical <input type="checkbox"/> Service manual revision <input type="checkbox"/> Paper path <input type="checkbox"/> Transmit/receive <input type="checkbox"/> Retrofit information <input type="checkbox"/> Other ()		
Model Name: Platinum: Ricoh DX3340/DX3440C/DX3240, Gestetner CP6146/DX3440/CP6300C/DX3240, Savin 3180DNP, Lanier LDD120, RexRotary DX3440/DX3240, nashuatec DX3440/DX3240, Standard SD360 Platinum P (China only): Ricoh DX3440CP, Gestetner CP6300P			

SYMPTOM

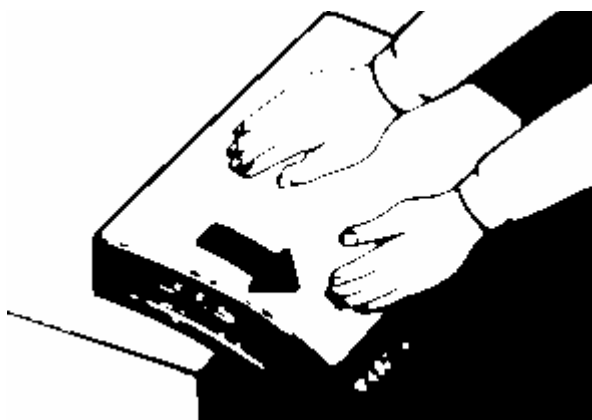
Sometimes when using thin paper, the paper wrinkles.

CAUSE

The paper is curled when loaded into the paper tray.

SOLUTION

1. Make sure the paper is flat when loaded.
 - Store the paper in a low-humidity environment.
 - Do not open the paper ream until just before printing.
 - Make the paper flat.
See the picture below.



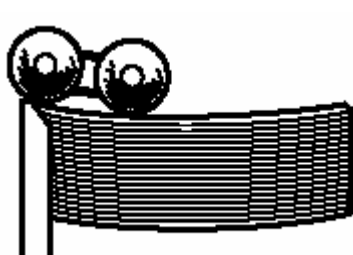
Model: PRIPORT Platinum/Platinum P**Date:** 9-Nov-07**No:** R-C267-005

- If the paper is already curled, try loading the paper upside-down in the tray.

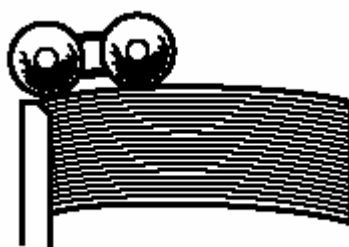
See the limitations below.

Limitations for when loading curled paper:

- If the paper is loaded when curling upward, it will minimize wrinkling, but there may be more paper jams.
- If the paper is loaded when curled downward, it will tend to form wrinkles, but there will be fewer paper jams.



Curling upward



Curled downward

2. Decrease the print speed

Lower print speed means better paper feed and less wrinkling.

3. Decrease the amount of paper on the paper feed table (to 500 sheets or less)

Higher paper stacks on the feed table mean a larger paper curl.

4. Decrease the paper separation pressure (toward a lower number) and paper feed pressure (toward "thin paper")

Caution: A lower paper separation pressure means a higher tendency for multi-feeds to occur. A lower paper feed pressure means a high tendency for mis-feeds (non-feeds) to occur. The optimum balance of paper feed pressure and paper separation pressure depends on the type of paper being used.

5. Replace the Mylar (Refer to the RTB # RC267004, and the MB MC267008).

Model: PRIPORT Platinum/Platinum P/Platinum2		Date: 22-Nov-07	No: R-C267-006
Subject: New Model Platinum2 Information		Prepared by: K. Yamamoto, Priport Service Planning Section	
Classification:	<input type="checkbox"/> Troubleshooting <input type="checkbox"/> Part information <input type="checkbox"/> Action required <input type="checkbox"/> Mechanical <input type="checkbox"/> Electrical <input type="checkbox"/> Service manual revision <input type="checkbox"/> Paper path <input type="checkbox"/> Transmit/receive <input type="checkbox"/> Retrofit information <input checked="" type="checkbox"/> Other (New Machine Information)		
Model Name:			
Platinum:	Ricoh DX3340/DX3440C/DX3240, Gestetner CP6146/DX3440/CP6300C/DX3240, Savin 3180DNP, Lanier LDD120, RexRotary DX3440/DX3240, nashuatec DX3440/DX3240, Standard SD360		
Platinum P (China only)	Ricoh DX3440CP, Gestetner CP6300P		
Platinum 2	Ricoh DX3442/DX3442C/DX3242, Gestetner DX3442/CP6301C/DX3242, Rotary DX3442/DX3242, nashuatec DX3442/DX3242		

This RTB contains the Service Manual information unique to the Platinum2 (C271).

Note: For a list of parts unique to the Platinum2, see MB #MC267010.

OVERALL INFORMATION

ESSENTIAL DIFFERENCES FROM THE PLATINUM (C267) SERVICE MANUAL

NOTE: If there are no changes, we simply marked "None" in the corresponding remarks column.

Section	Item	Remarks
1	Installation	Changed accessory check
2	Preventive Maintenance	None
3	Replacement and Adjustment	None
4	Troubleshooting	None
5	Service Program Mode	Added new SP mode
6	Detailed Section Descriptions	None
7	Specifications	Added specification for A3 Printing Mode and Pencil Mode

1. INSTALLATION

1.2 INSTALLATION PROCEDURE

1.2.1 MAIN BODY

Accessory Check

Make sure that you have all the accessories listed below.

Description	Quantity
1. Master Spool -----	2
2. Paper Delivery Side Plate Guide -----	2
3. Paper Feed Side Pad -----	2
8. Leaflet -----	1
9. Operating Instructions -----	1
10. Easy Operation Guide -----	1
13. Bundled Items List -----	1

5. SERVICE PROGRAM MODE

5.7 6. ADJUSTMENT

5.7.1 SP TABLE (SP6-XXX)

The following SP mode was added:

No.	Menu Items	Default	Settings
26	Master Making Density – Pencil	1	0: Pale, 1: Normal, 2: Dark

Model: PRIPORT Platinum/Platinum P/Platinum2

Date: 22-Nov-07

No: R-C267-006

7 SPECIFICATIONS

7.3 GENERAL SPECIFICATION.

The specifications are identical to those of the C267, except that “A3 Printing Mode” and “Pencil Mode” were added.

Specifications for A3 Printing Mode:

Item	Remarks	
Printing speed:	80 sheets/minute only	
Print paper weight:	52.3 to 157 g/m ²	B4 machine
	35 to 127.9 g/m ²	Chinese Model (B4 machine)
	45.0 to 79 g/m ²	A4 machine
Leading edge Margin	10mm	B4 machine
	20mm	A4 machine
Side / Vertical Registration Adjustable Range:	Not adjustable	Vertical:
	+/- 1mm	Side:
Paper delivery tray capacity:	500 sheets	80 g/m ²
Copy Paper Size:	297mm x 420mm	

Note: When A3 Printing Mode is selected, the printing speed, leading edge margin, and vertical un-adjustment cannot be changed (the machine automatically uses pre-set values).

Original Type (Pencil Mode newly added):

Item	Remarks
Original type:	Text, Text/Photo, Photo, Pale mode, Pencil mode

Model: PRIPORT Platinum/Platinum P/Platinum2		Date: 12-Feb-08	No: R-C267-007
Subject: B-jam without paper in the machine		Prepared by: K. Yamamoto, Priport Service Planning Section	
Classification:	<input checked="" type="checkbox"/> Troubleshooting <input type="checkbox"/> Part information <input type="checkbox"/> Action required <input type="checkbox"/> Mechanical <input type="checkbox"/> Electrical <input type="checkbox"/> Service manual revision <input type="checkbox"/> Paper path <input type="checkbox"/> Transmit/receive <input type="checkbox"/> Retrofit information <input type="checkbox"/> Other ()		
Model Name:			
Platinum:	Ricoh DX3340/DX3440C/DX3240, Gestetner CP6146/DX3440/CP6300C/DX3240, Savin 3180DNP, Lanier LDD120, RexRotary DX3440/DX3240, nashuatec DX3440/DX3240, Standard SD360		
Platinum P (China only)	Ricoh DX3440CP, Gestetner CP6300P		
Platinum 2	Ricoh DX3442/DX3442C/DX3242, Gestetner DX3442/CP6301C/DX3242, Rotary DX3442/DX3242, nashuatec DX3442/DX3242		

SYMPTOM

If the machine makes a new master and starts printing just after recovering from Energy Saver mode, the “B-jam” condition may occur (but there is no jammed paper).

Note: The B-jam condition can be cleared by turning the main power OFF/ON. Also, it can be cleared temporarily by removing/re-attaching the drum, but it will occur again after that.

CAUSE

Firmware bug

SOLUTION

Upgrade the firmware to P/N **C2715105A or newer** at the next service visit.

Note: See RTB RC267001C (firmware modification history) for details.

Important: If you replace the NV-RAM when you upgrade the firmware, make sure to program the following machine information stored in the old NV-RAM into the new NV-RAM.

- Machine code (SP2-4)
- Serial number (SP3-3)
- Image adjustment parameters (see Service Manual, sec. 5.7.6)
- Any SP values that have been changed since installation

Note: See MB MC267007 for details.

Model: PRIPORT Platinum/Platinum P/Platinum2		Date: 27-Aug-08	No: R-C267-008
Subject: Improve density of printing image		Prepared by: K. Yamamoto, Priport Service Planning Section	
Classification:	<input checked="" type="checkbox"/> Troubleshooting <input type="checkbox"/> Mechanical <input type="checkbox"/> Paper path <input type="checkbox"/> Other ()	<input type="checkbox"/> Part information <input type="checkbox"/> Electrical <input type="checkbox"/> Transmit/receive	<input type="checkbox"/> Action required <input type="checkbox"/> Service manual revision <input type="checkbox"/> Retrofit information
Model Name: Platinum: Ricoh DX3340/DX3440C/DX3240, Gestetner CP6146/DX3440/CP6300C/DX3240, Savin 3180DNP, Lanier LDD120, RexRotary DX3440/DX3240, nashuatec DX3440/DX3240, Standard SD360 Platinum P (China only): Ricoh DX3440CP, Gestetner CP6300P Platinum 2: Ricoh DX3442/DX3442C/DX3242, Gestetner DX3442/CP6301C/DX3242, Rotary DX3442/DX3242, nashuatec DX3442/DX3242			

SYMPTOM

Images are light/pale on the first several sheets printed out (proof print).

CAUSE

The paper feed speed is faster with the first several sheets (proof print). The faster the paper feed speed, the lighter the image.

Model: PRIPORT Platinum/Platinum P/Platinum2

Date: 27-Aug-08

No: R-C267-008

SOLUTION

Update to firmware verC2715105C, and decrease the paper feed speed (proof print) using the new SP mode shown below.

Note: See RTB #RC267001E for the firmware release information.

SP #	Name	Default	Settings
2-34	Proof Print Adjustment	OFF	ON/OFF
2-35	Number of Proof Print	0	0~5

2-34: Activates the mode

2-35: Changes the number of proof prints

For example:

Current setting (SP2-34: OFF)

Number of sheets	1	2	3	4	5
Speed (cpm)	30	60	80	100	100

Note: The paper feed speed is increased when feeding the 1st print (proof print).

Set the mode (SP2-34: ON)

SP2-35 => 0

Number of sheets	1	Idling	2	3	4
Speed (cpm)	30	30	80	100	100

SP2-35 => 1

Number of sheets	1	2	Idling	3	4
Speed (cpm)	30	30	30	80	100

SP2-35 => 5

Number of sheets	1	2-6	Idling	7	8
Speed (cpm)	30	30	30	80	100

Important: Before you set these SP modes, make sure to explain the following side effect to the user.

Side effect: When SP2-34 is ON, the paper tends to stop at the paper delivery unit and result in a paper jam. This is because the slower the paper feed speed, the lower the paper feed pressure, which tends to make the paper stop at the paper delivery unit.

Model: P Platinum		Date: 7-Apr-09	No.: RC267001
Subject: Decal for master set		Prepared by: M.Kumagai	
From: 2nd Tech Support Sec. Service Support Dept.			
Classification:	<input type="checkbox"/> Troubleshooting <input type="checkbox"/> Mechanical <input type="checkbox"/> Paper path <input type="checkbox"/> Product Safety	<input checked="" type="checkbox"/> Part information <input type="checkbox"/> Electrical <input type="checkbox"/> Transmit/receive <input type="checkbox"/> Other ()	<input type="checkbox"/> Action required <input type="checkbox"/> Service manual revision <input type="checkbox"/> Retrofit information <input type="checkbox"/> Tier 2

Change / Reason:

Parts standardized for Titanium 3

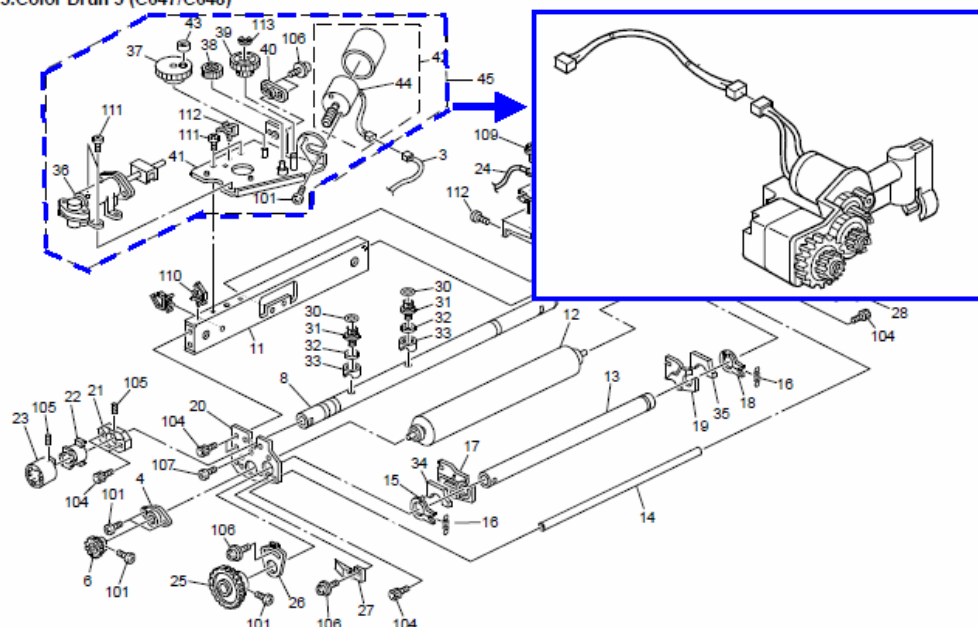
Old part number	New part number	Description	Q'ty	Int	Page	Index	Note
C2611973	C2741331	DECAL:MASTER SET INSTRUCTIONS:STOPPER GUIDE	1	X/O As a Set	27	19	
C2612057	C2742057	DISPLAYSUB-UNIT:LEADING EDGE:MASTER:PRINTING	1		31	7	
C2385660	C2711330	DECAL:MASTER SET INSTRUCTIONS:PS	1		9	16	

Model: P PT-Series		Date: 19-Aug-09	No.: RC267010
Subject: Color Drum Type 20		Prepared by: M.Kumagai	
From: 2nd Tech Support Sec. Service Support Dept.			
Classification:	<input type="checkbox"/> Troubleshooting <input type="checkbox"/> Mechanical <input type="checkbox"/> Paper path <input type="checkbox"/> Product Safety	<input checked="" type="checkbox"/> Part information <input type="checkbox"/> Electrical <input type="checkbox"/> Transmit/receive <input type="checkbox"/> Other ()	<input type="checkbox"/> Action required <input type="checkbox"/> Service manual revision <input type="checkbox"/> Retrofit information <input type="checkbox"/> Tier 2

Parts Change

- **Main change:** The Ink pump unit was changed to the same Thorochoid unit used on the PT series and TT3.
Reason: To facilitate servicing in the field.

3.Color Drum 3 (C647/C648)



- **In accordance with this change:**
 - Some service parts changes were made (**see the PT or TT3 parts catalog**).
 - The format of the serial number for the drum was changed (**see the table below**) so that it is easy to distinguish between the drums with the old/new pump units.

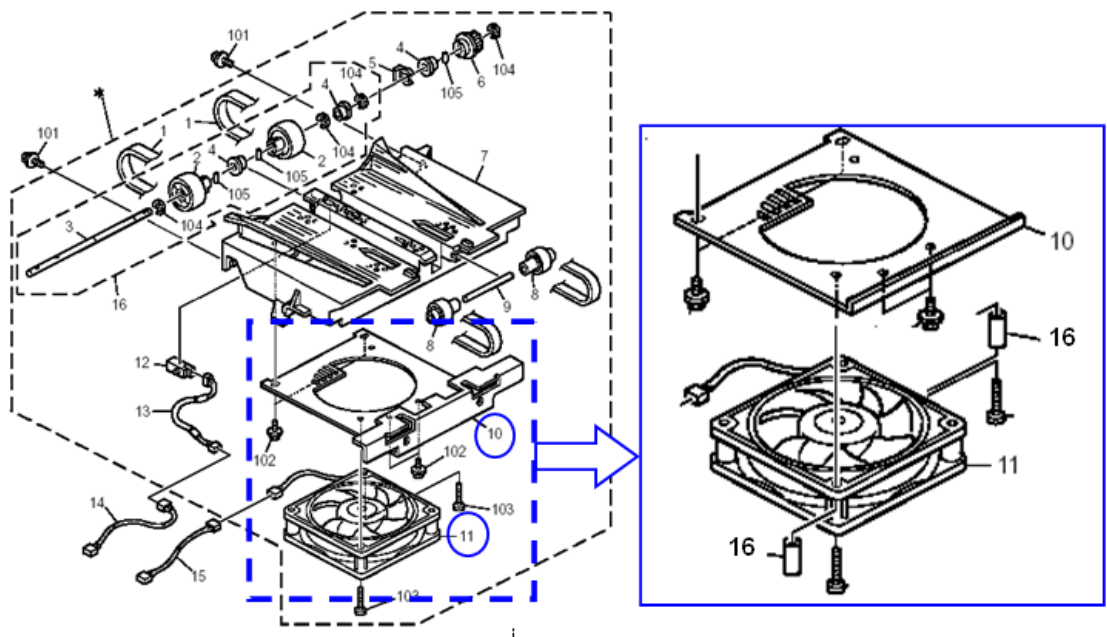
Item	Model Name	Product Code	Old S/N format	New S/N format	Note
LG Color Drum	Color Drum Type 20 (LG)	C647-59	N01YMM70001	N96YMM70001	
B4 Color Drum	Color Drum Type 20 (B4)	C648-59	N02YMM70001	N97YMM70001	
A4 Color Drum	Color Drum Type 20 (A4)	C643-59	N11YMM70001	N95YMM70001	Only for Platinum

Model: PT		Date: 06-Jan-10	No.: RC267011
Subject: Parts information		Prepared by: M. Kumagai	
From: 1st Overseas Tech Support Sec., 1st PQM Dept.			
Classification:	<input type="checkbox"/> Troubleshooting <input checked="" type="checkbox"/> Part information <input type="checkbox"/> Action required <input type="checkbox"/> Mechanical <input type="checkbox"/> Electrical <input type="checkbox"/> Service manual revision <input type="checkbox"/> Paper path <input type="checkbox"/> Transmit/receive <input type="checkbox"/> Retrofit information <input type="checkbox"/> Product Safety <input type="checkbox"/> Other () <input type="checkbox"/> Tier 2		

Change/Reason: Parts standardization with new model PT3.

Old #	New #	Description	Qty	Int	Page	Index
C2673804	C2713804	HALE UNIT:ASS'Y	1	X/O	41	*
C2615880	AX655800	DC FAN MOTOR:AXIAL:MM119:24V	1	X/O	41	11
C2673801	C2753801	STAY:PAPER EXIT SUB-UNIT:ASS'Y	1	as a set	41	10
	C2725887	SPACER:DC FAN MOTOR:AXIAL:MM119:24V	2		41	16

17.VACUUME FAN UNIT (C267)



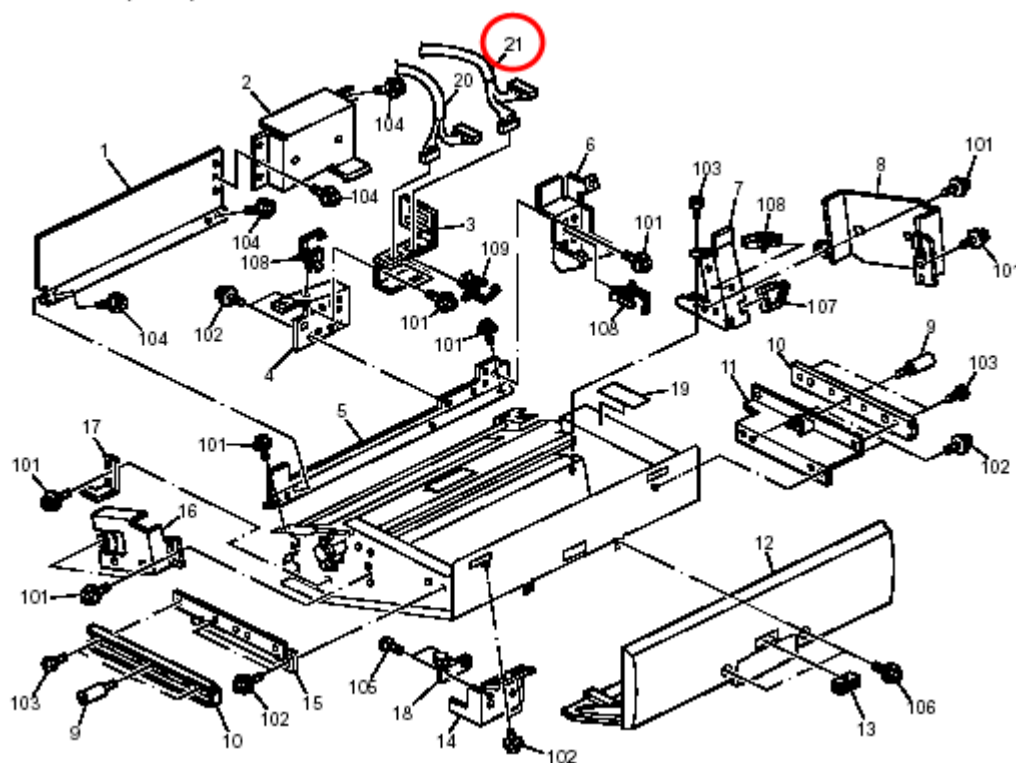
Model: P PT-Series		Date: 18-Feb-10	No.: RC267012
Subject: Parts information		Prepared by: M. Kumagai	
From: 1st Overseas Tech Support Sec., 1st PQM Dept.			
Classification:	<input type="checkbox"/> Troubleshooting <input type="checkbox"/> Mechanical <input type="checkbox"/> Paper path <input type="checkbox"/> Product Safety	<input checked="" type="checkbox"/> Part information <input type="checkbox"/> Electrical <input type="checkbox"/> Transmit/receive <input type="checkbox"/> Other ()	<input type="checkbox"/> Action required <input type="checkbox"/> Service manual revision <input type="checkbox"/> Retrofit information <input type="checkbox"/> Tier 2

Change/Reason: The harness circled in red was changed to standardize parts with Model PT3 (C275).

Old part number	New part number	Description	Q'ty	Int	Page	Index	Note
C2675244	C2755244	HARNESS:CONNECTING:PLOTTER:2:ASS'Y	1	X/O As a Set	27	21	
	C2755245	HARNESS:CONNECTING:CUTTER UNIT:ASS'Y	1		27	22*	

*New index

10.PROTTER UNIT 1 (C267)



Model: P PT-Series		Date: 20-Aug-10	No.: RC267013
Subject: Parts information		Prepared by: M. Kumagai	
From: 1st Overseas Tech Support Sec., 1st PQM Dept.			
Classification:	<input type="checkbox"/> Troubleshooting <input type="checkbox"/> Mechanical <input type="checkbox"/> Paper path <input type="checkbox"/> Product Safety	<input checked="" type="checkbox"/> Part information <input type="checkbox"/> Electrical <input type="checkbox"/> Transmit/receive <input type="checkbox"/> Other ()	<input type="checkbox"/> Action required <input type="checkbox"/> Service manual revision <input type="checkbox"/> Retrofit information <input type="checkbox"/> Tier 2

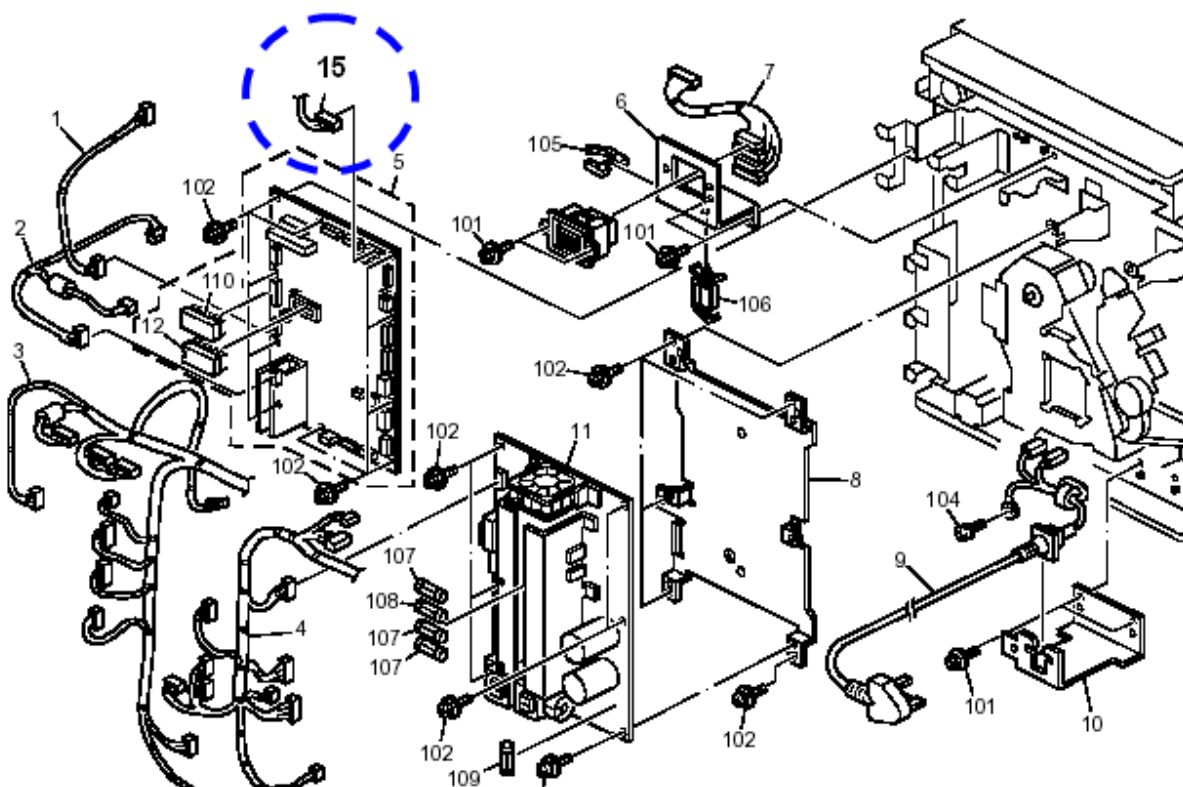
This RTB applies to the PT (C267) and PT2 (C271)

Old part number	New part number	Description	Q'ty	Int	Page	Index	Note
	C2755206	HARNESS:INK:ASS'Y	1		49	15*	

*New index

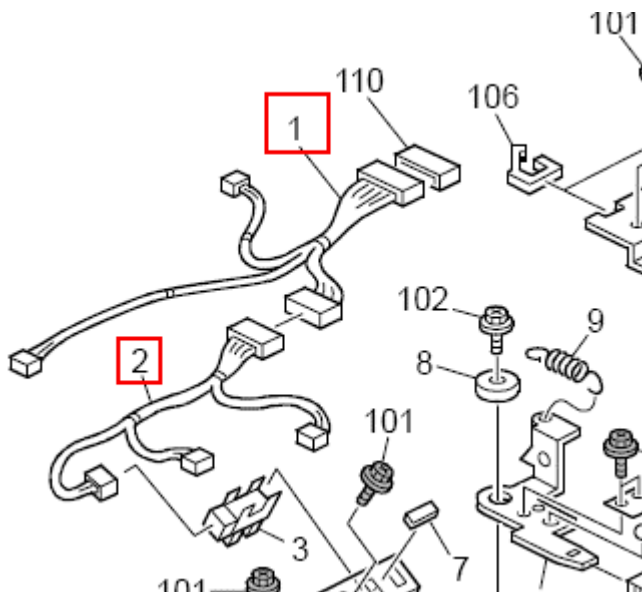
Change/Reason: The harness was missing from the Parts Catalog.

21.ELECTRICAL SECTION 1 (C267)



Model: P PT-Series		Date: 14-Jan-11	No.: RC267014
Subject: Parts catalog correction		Prepared by: M. Kumagai	
From: 1st Overseas Tech Support Sec., 1st PQM Dept.			
Classification:	<input type="checkbox"/> Troubleshooting <input type="checkbox"/> Mechanical <input type="checkbox"/> Paper path <input type="checkbox"/> Product Safety	<input checked="" type="checkbox"/> Part information <input type="checkbox"/> Electrical <input type="checkbox"/> Transmit/receive <input type="checkbox"/> Other ()	<input type="checkbox"/> Action required <input type="checkbox"/> Service manual revision <input type="checkbox"/> Retrofit information

Change / Reason: The following part indexes in the parts catalog were corrected.



Old part number	Description	Q'ty	Page	Incorrect Index	Correct Index	Note
C2675273	HARNESS:CONNECTING:STAY:P LOTTER:ASS'Y	1-1	23	4	2	
C2675272	HARNESS:STAY:ASS'Y	1-1	23	2	1	

Model: P PT-Series		Date: 11-Jan-12	No.: RC267015
Subject: Ink pump motor		Prepared by: K. Yamamoto	
From: 1st Tech Service Sect., MFP/P Tech Service Dept.			
Classification:	<input type="checkbox"/> Troubleshooting <input type="checkbox"/> Mechanical <input type="checkbox"/> Paper path <input type="checkbox"/> Product Safety	<input checked="" type="checkbox"/> Part information <input type="checkbox"/> Electrical <input type="checkbox"/> Transmit/receive <input type="checkbox"/> Other ()	<input type="checkbox"/> Action required <input type="checkbox"/> Service manual revision <input type="checkbox"/> Retrofit information <input type="checkbox"/> Tier 2

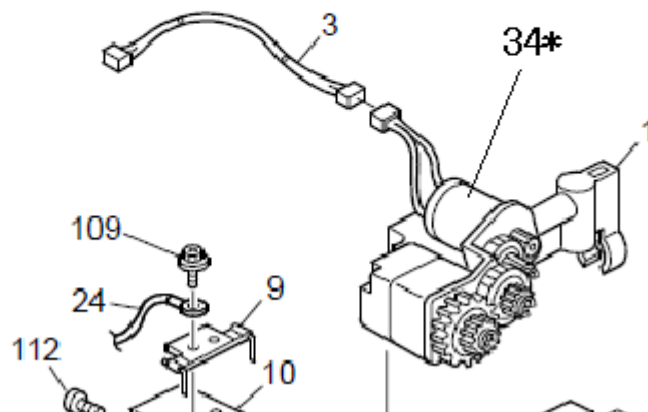
Old part number	New part number	Description	Q'ty	Int	Page	Index	Note
-	C2672427	DC MOTOR:PUMP UNIT	1	-	39	34*	

Change: The DC pump motor was added as a service part.

Reason: To improve serviceability in the field.

*New index

16.DRUM UNIT 3 (C267)



Reissued:16-Jul-14

Model: P PT-Series	Date: 11-Jul-14	No.: RC267016a
--------------------	-----------------	----------------

RTB Reissue

The illustration has changed as shown below.

Subject: Part Catalog Correction		Prepared by: T.Hirakawa	
From: 2nd Tech Service Sect., MFP/P Tech Service Dept.			
Classification:	<input type="checkbox"/> Troubleshooting <input type="checkbox"/> Mechanical <input type="checkbox"/> Paper path <input type="checkbox"/> Product Safety	<input checked="" type="checkbox"/> Part information <input type="checkbox"/> Electrical <input type="checkbox"/> Transmit/receive <input type="checkbox"/> Other ()	<input type="checkbox"/> Action required <input type="checkbox"/> Service manual revision <input type="checkbox"/> Retrofit information <input type="checkbox"/> Tier 2

Change/Reason: The illustration shown below was corrected.

- The area enclosed by the red box is the correct outline for P/N C2613873 (index #16).

17.VACUUME FAN UNIT (C267)

