



This course explains the differences between this new model and its predecessor, PT-D3.

The only real difference is the scanner and ADF, which are taken from the K-C4.

There is also a new accessory, the table stand, which will be explained later.



No additional notes



How Many Models

RICOH
imagine. change.

- DD3324: A4 drum, 220-240V
- DD3334: LG drum, 120V
- DD3344: B4 drum, 220-240V
- DD3344c: B4 drum, 220-240V, Special design for the China market

3

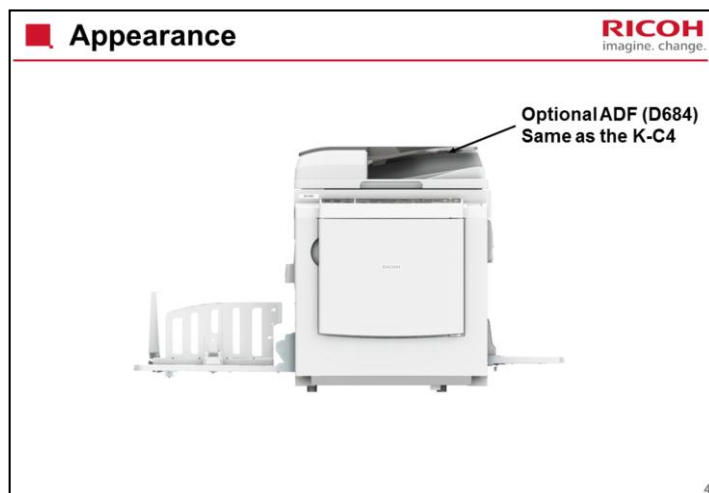
The models are released in the following markets

DD 3324: Europe, Asia

DD 3334: North America, Latin America

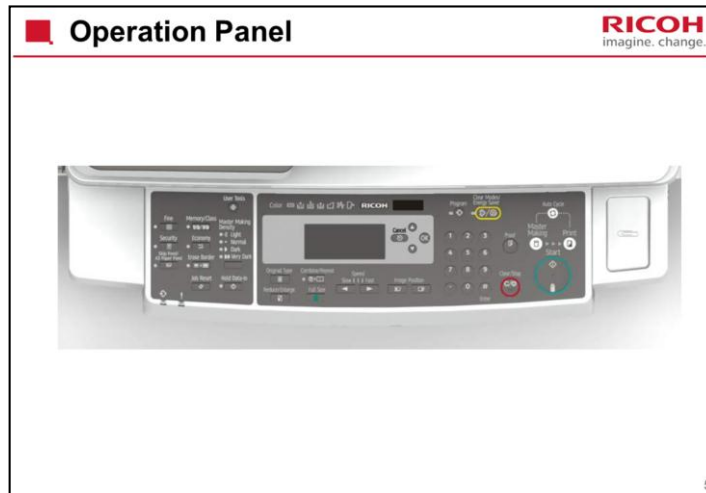
DD 3344: Europe, Asia, Latin America, Korea

DD 3344c: China



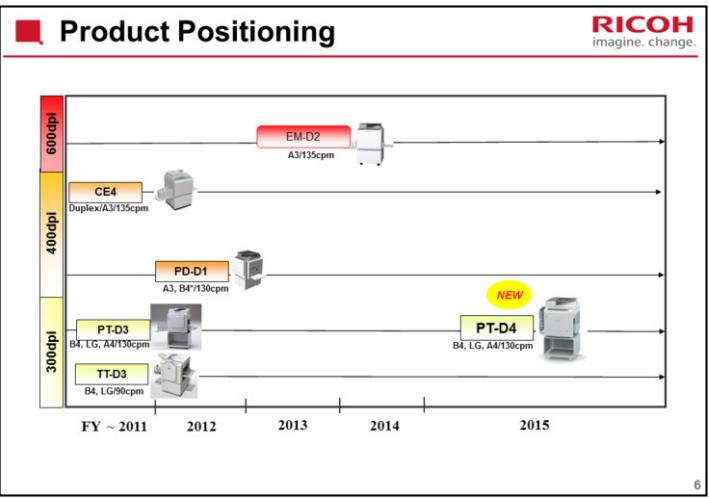
The color of the covers has changed to match the new PDI (Product Design Identity).

Instead of the ADF, the platen cover PN2000 (D700) can be attached.

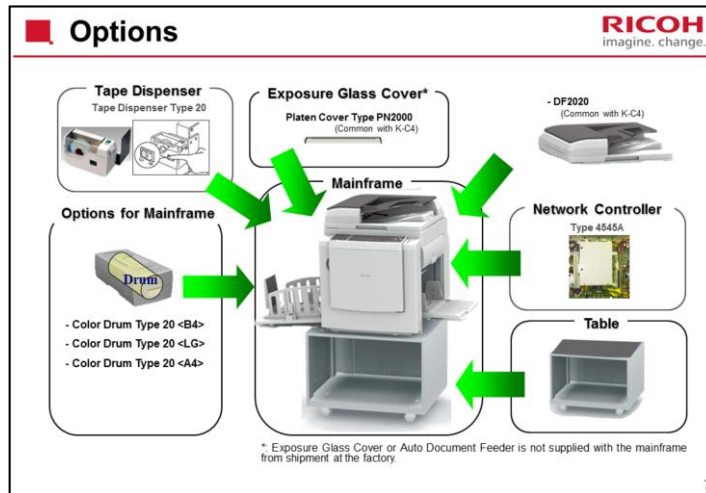


This shows the North American version.



The European version uses symbols as usual, but the design is the same.



No additional notes



The controller allows the user the same network printing capabilities as a networked printer or MFP.



Changes Since the PT-D3

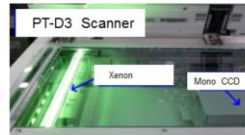
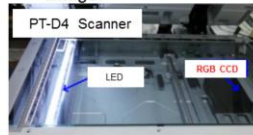
8

No additional notes

Better Scanning

RICOH
imagine. change.

- The ADF and scanner from the K-C4 are used.
 - Wider range of paper weights can be fed.
 - Original stack capacity increased from 30 to 100
- Higher scanning resolution
 - PT-D3 - 600 x 300 dpi
 - PT-D4 - 600 x 600 dpi
- New CCD
 - PT-D3's CCD – Monochrome: Some colors cannot be captured well.
 - PT-D4's CCD – RGB: Can capture various colours as a monochrome image.



9

Please refer to training materials for the K-C4 to learn about the scanner.

Stand for Tabletop Use

RICOH

imagine. change.

■ Use the stand when installing the machine on a table (except when at the edge of the table), so that the paper delivery table is at the correct angle

No stand: Edge of Table

No stand: Center of Table

Proper angle for good paper alignment

Incorrect angle for good paper alignment

Proper angle for good paper alignment after adding the stand

New Stand

10

The stand is bundled with the machine.

See the installation procedure for the projector for details on how to install the stand.

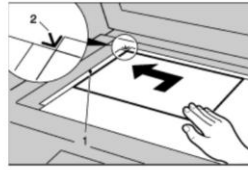
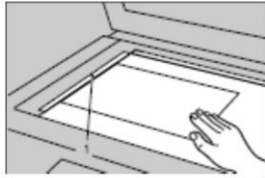
10

Reduced Energy Consumption			RICOH imagine. change.
TEC	PT-D4	PT-D3	
US	1.22kw/h	1.25kw/h	
EU/Asia	1.34kw/h	1.3kw/h	

No additional notes

■ Placing Originals on the Exposure Glass

RICOH
imagine. change.



- If the platen cover is used, customers can position the original at the center or at the rear left corner.
- If the ADF is used, the original is fed to the rear left corner.

12

No additional notes

Faster Master Making and First Print			RICOH imagine. change.	
A4, exposure glass	Master Making Time	First Print Time		
PT-D3	32 sec	34 sec		
PT-D4	31 sec	33 sec		

No additional notes

Firmware Update

RICOH
imagine. change.

- Uses SD cards in a similar process to other recent models.
 - PT-D3 uses flash memory cards.

14

No additional notes



The End