

Paper Feed Unit TK2000

(Code: M406)

For Machine Code: M109

INSTALLATION GUIDE

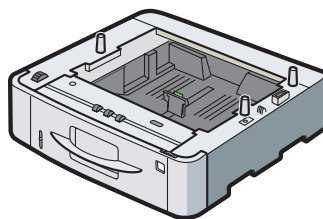
⚠ CAUTION:

- The printer weighs approximately 41 kg (90.4 lb.). When moving the printer, use the inset grips on both sides, and lift slowly in pairs. The printer will break or cause injury if dropped.
- Lifting the paper feed unit carelessly or dropping may cause injury.
- It is dangerous to handle the plug with wet hands. Doing this may result in receiving an electric shock.
- Before moving the printer, unplug the power cord from the wall outlet. If the cord is unplugged abruptly, it could become damaged. Damaged plugs or cords can cause an electrical or fire hazard.

★ Important

- When attaching multiple options, attach the paper feed unit first.
- To attach two or three paper feed units at the same time, first stack them one upon the other, and then attach them as a single unit.
- Do not place the printer directly on the floor.

1 Check the contents of the package.

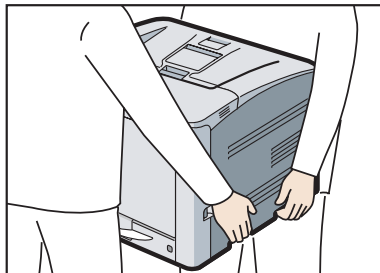


CSJ231

2 Turn the printer off and unplug the power cord.

3 Remove the packaging from the paper feed unit.

4 Lift the printer using the inset grips on both sides of the printer.

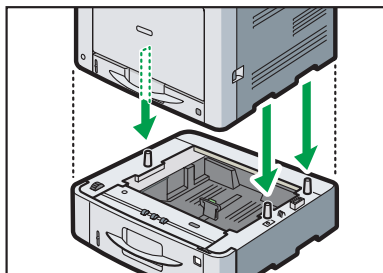


CSJ220

When moving the printer, do not hold on to the following parts as doing so could cause a malfunction:

- The handle onto the standard paper feed tray.
- The underside of the bypass tray.

- 5** There are three upright pins on the optional paper feed unit. Align them with the holes on the underside of the printer, and then carefully lower the printer.



CSJ219

- 6** Plug in the power cord, and then turn on the printer.
- 7** Print the configuration page to confirm that the unit was attached correctly.

Note

- To confirm whether the optional paper feed unit was correctly attached, print the configuration page, and check “Attached Equipment” on the configuration page. If the unit was attached correctly, “Tray 2”, “Tray 3”, and “Tray 4” will appear.
- For more information about printing the configuration page, see “Test Printing”, *Operating Instructions*.
- If the optional paper feed unit was not installed properly, repeat the procedure from the beginning. If it cannot be installed correctly even after reattempting installation, contact your sales or service representative.
- To use the paper feed unit, configure the printer options in “Accessories” in the printer driver. For details about opening “Accessories”, see “Configuring Option Settings for the Printer”, *Driver Installation Guide*.

© 2012-2014

Printed in China

EN (GB) EN (US) EN (AU) M406-8600A



M4068600A