

Reissued: 22-Jun-11

Model: MD – P1	Date: 21-Jan-09	No.: RM040001f
----------------	-----------------	----------------

RTB Reissue

The items in bold italics have been changed or added.

Subject: Firmware Release Note: Engine		Prepared by: H.K.	
From: 2nd Overseas Tech Support Sec. 2nd PQM Dept			
Classification:	<input type="checkbox"/> Troubleshooting	<input type="checkbox"/> Part information	<input type="checkbox"/> Action required
	<input type="checkbox"/> Mechanical	<input type="checkbox"/> Electrical	<input type="checkbox"/> Service manual revision
	<input type="checkbox"/> Paper path	<input type="checkbox"/> Transmit/receive	<input type="checkbox"/> Retrofit information
	<input type="checkbox"/> Product Safety	<input checked="" type="checkbox"/> Other (Firmware)	<input checked="" type="checkbox"/> Tier 2

This RTB has been issued to announce the firmware release information for the **Engine**.

Version	Program No.	Effective Date	Availability of RFU
<i>M2.60</i>	<i>G1635130P_PCL</i>	<i>July production '11</i>	<i>Not available</i>
M2.50	G1635130N_PCL	February production '11	Not available
M2.40	G1635130M_PCL	July Production '10	Not available
M2.30	G1635130L_PCL	August Production '09	Not available
M2.20	G1635130K_PCL	Not applied to the production	Not available
M2.10	G1635130J_PCL	June Production '09	Not available
M2.00	G1635130H_PCL	March Production '09	Not available
M1.10	G1635130G_PCL	1st Mass production	Not available

Note: Definition of Availability of RFU via @Remote
"Available": The firmware can be updated via RFU or SD card.
"Not available": The firmware can only be updated via SD card.

Symptom Corrected	Version
<i>Other changes:</i> <i>The development voltage applied to the non-image areas of the OPC before printing was increased, and the intensity of the laser diode for the non-image areas after printing was decreased.</i> <i>Note: This was done to reduce the amount of waste toner from the non-image areas that is stored in the AIO waste toner tank.</i>	<i>M2.60</i>
<i>Other changes:</i> Normally, the AIO motors will not rotate during the recovery from the sleep mode. This is to reduce the toner consumption. (However, they will rotate if process control and/or MUSIC are carried out during sleep recovery.) At about 72K or more prints made with the same ITB, horizontal white lines may appear on the first BK page of a job that immediately follows a full color job. Note: When the machine changes from full color to B/W mode, the charge on the surface of the ITB becomes uneven. To correct this, the machine now waits a short time after completing a full color job.	M2.50

Reissued: 22-Jun-11

Model: MD – P1	Date: 21-Jan-09	No.: RM040001f
Symptom Corrected		Version
<p>Noise is heard from the color AIO cartridges when the waste toner tank is full.</p> <p>Note:</p> <ul style="list-style-type: none"> - To correct this, Near End and End conditions for the AIO waste toner tank were added as additional toner near and toner end conditions. - With color AIO cartridges, this occurs when the coverage is low (1% or less), the P/J is low (1-2P/J), and the printing mode is full color. 		
<p>Other changes:</p> <p>The occurrence conditions of SC542 were changed so that it is not triggered when the AC voltage fluctuates between 10-20% during machine warm-up (since this results in an unnecessary service call).</p>		M2.40
<p>Other changes:</p> <p>Process Control conditions were changed as follows:</p> <ul style="list-style-type: none"> - Color toner is no longer consumed when Process Control or MUSIC is performed for B/W printing. - Process Control for full-color printing is performed just before the start of a full-color job <p>Note: Due to this change, when the operator switches to full-color mode for the first time after the main power switch is turned on, the machine requires about 30-40 seconds before it is ready to accept a job.</p> <p>IMPORTANT: To apply the change, after you update the firmware to this version, change the following setting in S mode (SP mode inside SOM):</p> <p>00: Normal (default)</p> <p>08: Reduces color toner consumption</p> <p>See RTB #RM040004 for more details.</p>		M2.30
<p>To optimize Process Control for B/W printing, some process steps were eliminated.</p>		
<p>This was not applied to the production lines.</p>		M2.20

Reissued: 22-Jun-11

Model: MD – P1	Date: 21-Jan-09	No.: RM040001f
Symptom Corrected		Version
<p>Symptom corrected:</p> <p>1. SC543 may be detected by mistake when the following sequence occurs: Paper jam just after machine warm-up -> Jam cleared -> Main switch is turned off/on</p> <p>2. Toner is sometimes attracted to non-image areas at both ends of the OPC surface after image development is completed. Note: To reduce the cleaning load on the AIO, the development bias after image development was increased from +100V to +150V.</p> <p>Other changes:</p> <p>3. Some process control parameters were changed to further improve toner transfer onto solid image areas when the BK AIO is at Near End.</p>		M2.10
<p>1. It is now possible to change the timing at which the replacement alert for the ITB is displayed. To do this, set the percent of target yield at which you want the alert to be displayed (range: 1-100%, default: 100%).</p> <p>To access this setting:</p> <ul style="list-style-type: none">- While holding down the [Start/Stop] key and [Escape] key, turn the printer ON.- Continue to hold down these keys for more than 10 seconds to access Service Mode.- Then, access: Eng Maintenance -> Transfer Unit.- Enter a setting between 1-100%. <p>2. It is now possible to continue using the machine after the ITB reaches its life limit.</p> <p>Important: To apply the above changes, make sure to update the controller firmware to 1.03 or later as well.</p>		M2.00
Initial release		M1.10

Reissued: 30-Mar-11

Model: MD-P1	Date: 21-01-09	No.: RM040002b
--------------	----------------	----------------

RTB Reissue

The items in bold italics have been changed or added.

Subject: Firmware Release Note: Controller		Prepared by: H.Kobayashi	
From: 2nd Overseas Tech Support Sec., 2nd PQM Dept.			
Classification:	<input type="checkbox"/> Troubleshooting <input type="checkbox"/> Mechanical <input type="checkbox"/> Paper path <input type="checkbox"/> Product Safety	<input type="checkbox"/> Part information <input type="checkbox"/> Electrical <input type="checkbox"/> Transmit/receive <input checked="" type="checkbox"/> Other (Firmware)	<input type="checkbox"/> Action required <input type="checkbox"/> Service manual revision <input type="checkbox"/> Retrofit information <input checked="" type="checkbox"/> Tier 2

This RTB has been issued to announce the firmware release information for the **Controller**.

Version	Program No.	
<i>V1.05</i>	<i>G1675687E.dwn</i>	<i>Web release only</i>
V1.03	G1675687C_PDL	April Production '09
V1.00	G1675687B_PDL	1st Mass production

Symptom Corrected	Version
<i>Symptom corrected:</i> <i>1. Slanted dots over umlauts in documents submitted using the PS driver. The problem only affected TrueType fonts.</i> <i>2. Parts of a page might be printed as two or more separate pages. This problem was triggered by having multiple instances of the orientation command in the same page of a PCL job.</i> <i>3. If printing a duplex job without driver, the printout might be cut off on 1 side.</i>	<i>V1.05</i>
Other changes: 1. The print cartridge (toner cartridge) counters will now be printed on the Configuration Page and Test Page. 2. It is now possible to change the timing at which the replacement alert for the ITB is displayed. To do this, set the percent of target yield at which you want the alert to be displayed (range: 1-100%, default: 100%). Important: To apply the above changes, make sure to update the Engine firmware to M2.00 or later as well.	V1.03
Initial release	V1.00

Model: Model MD-P1		Date: 15-May-09	No.: RM040003
Subject: SPACER		Prepared by: H.K.	
From: 1st Tech. Support Sec. Service Support Dept.			
Classification:	<input type="checkbox"/> Troubleshooting <input checked="" type="checkbox"/> Part information <input type="checkbox"/> Action required <input type="checkbox"/> Mechanical <input type="checkbox"/> Electrical <input type="checkbox"/> Service manual revision <input type="checkbox"/> Paper path <input type="checkbox"/> Transmit/receive <input type="checkbox"/> Retrofit information <input type="checkbox"/> Product Safety <input type="checkbox"/> Other () <input type="checkbox"/> Tier 2		

Old part number	New part number	Description	Q'ty	Int	Section	Note
G1633961		SPACER:GROUND WIRE:TRANSFER/SEPARATION	1 – 0		Main Drive	

Change: The spacer was removed.

Reason: To eliminate noise that may occur due to the accumulated tolerances of surrounding parts.

Note: The shapes of the holder (P/N G1632839) and link (P/N G1632823) were also changed, but the part numbers remain the same.

SRD (China) Production

MODEL NAME	V/Hz	DESTINATION	CODE	SERIAL NUMBER
Ricoh Aficio SP C311N	120/60	USA	M040-17	Q9298900001
Gestetner SP C311N Nashuatec SP C311N Rex Rotary SP C311N	220/50, 60	Europe	M040-22	Q92989xxxxx
Ricoh Aficio SP C311N Lanier SP C 311N	220/50, 60	Europe, Asia, etc	M040-27	Q9298900183
Savin SP C 311N Gestetner SP C 311N Lanier SP C 311N	120/60	USA	M040-51	Q9298900905

MODEL NAME	V/Hz	DESTINATION	CODE	SERIAL NUMBER
Ricoh Aficio SP C312DN	120/60	USA	M041-17	Q9398900004
Ricoh Aficio SP C312DN	220/50, 60	China	M041-21	Q93989xxxxx
Gestetner SP C312DN Nashuatec SP C312DN	220/50, 60	Europe	M041-22	Q93989xxxxx

Model: Model MD-P1		Date: 15-May-09		No.: RM040003
Rex Rotary SP C312DN				
Ricoh Aficio SP C312DN Lanier SP C312DN	220/50, 60	Europe, Asia, etc	M041-27	Q9398800056
Savin SP C312DN Gestetner SP C312DN Lanier SP C312DN	120/60	USA	M041-51	Q9398900305

Model: Model MD-P1		Date: 31-Aug-09	No.: RM040004
Subject: Reducing the color toner consumption in BK mode		Prepared by: H.K.	
From: 1st Tech. Support Sec. Service Support Dept.			
Classification:	<input checked="" type="checkbox"/> Troubleshooting <input type="checkbox"/> Mechanical <input type="checkbox"/> Paper path <input type="checkbox"/> Product Safety	<input type="checkbox"/> Part information <input type="checkbox"/> Electrical <input type="checkbox"/> Transmit/receive <input type="checkbox"/> Other ()	<input type="checkbox"/> Action required <input type="checkbox"/> Service manual revision <input type="checkbox"/> Retrofit information <input checked="" type="checkbox"/> Tier 2

SYMPTOM

The customer reports that the color toner cartridges run out too early, even though nearly 100% of their printing is done in B/W mode.

CAUSE

The machine consumes color toner while performing Process Control or MUSIC for B/W printing as well as for color printing.

SOLUTION

1. Update the Engine firmware to ver**2.30**.

Changes with Engine ver**2.30**:

Process Control conditions were changed as follows.

- Color toner is no longer consumed when Process Control or MUSIC is performed for B/W printing.
- Process Control for full-color printing is performed just before the start of a full-color job.

Important: Please advise customers that due to this change, when the operator switches to full-color mode for the **first** time after the main power switch is turned on, the machine requires about 30-40 seconds before it is ready to accept a job.

2. Change the following S mode setting to reduce the color toner consumption as necessary (inside SP mode).

00: Normal

06: Reduces the toner M/A by 20% (from beginning of mass production)

07: Reduces the toner M/A by 10% (from beginning of mass production)

08: Reduces color toner consumption (ver2.30** or later)**

See the tables below.

Model: Model MD-P1

Date: 31-Aug-09

No.: RM040004

S mode settings

	Normal	Reducing color toner consumption (+8)
Normal	00 (Default)	08
Reduces the toner M/A by 20%	06	0E
Reduces the toner M/A by 10%	07	0F

Note:

- “E” and “F” are hexadecimal symbols. For example, “0E”=0(6+8), and “0F”=0(7+8).
- Reducing the toner M/A:
This reduces the amount of toner used to develop the image. If a page is that is nearly 100% solid image is printed out during the Toner Near End condition, the trailing edge can sometimes appear lighter than the rest of the image. Reducing the toner M/A will reduce the image density of the image overall, and make this lighter area less noticeable.

Model: Model MD-P1

Date: 31-Aug-09

No.: RM040004

Machine behavior with default setting versus when reducing color toner consumption

Event	With default setting	When reducing color toner consumption
Process Control/MUSIC <ul style="list-style-type: none"> Cover opened and closed At job end, once 200 cumulative pages are developed 	Machine performs Process Control and MUSIC for color.	<ul style="list-style-type: none"> - Machine performs Process Control for B/W mode without consuming any color toner. - Machine does not perform MUSIC.
MUSIC <ul style="list-style-type: none"> Warm-up at power ON Temperature change 	Machine performs MUSIC	<ul style="list-style-type: none"> - Machine does not perform MUSIC.
Rotation of the color AIO cartridge at warm-up	All color AIO cartridges are rotated.	Only the black AIO cartridge is rotated.
Manual process control from SOM	Normal Process Control is performed.	Normal Process Control is performed.
A color print job is initiated	Machine accepts and performs the job.	<ul style="list-style-type: none"> - Machine accepts the job, but before performing it, it judges whether or not Process Control needs to be performed first. - If 200 or more pages have been made since the last time a color job or Process Control was performed, the machine performs Process Control and then begins the job received.
First color print time just after main power is turned ON	The machine performs MUSIC during the warm-up.	The machine performs MUSIC just before the first color print job received after the main power is turned ON.

Model: Model MD-P1		Date: 07-Oct-09	No.: RM040005
Subject: Paper Jam		Prepared by: H.K.	
From: 2nd Overseas Tech Support Sec. 2nd PQM Dept			
Classification:	<input checked="" type="checkbox"/> Troubleshooting <input type="checkbox"/> Mechanical <input type="checkbox"/> Paper path <input type="checkbox"/> Product Safety	<input type="checkbox"/> Part information <input type="checkbox"/> Electrical <input type="checkbox"/> Transmit/receive <input type="checkbox"/> Other ()	<input type="checkbox"/> Action required <input type="checkbox"/> Service manual revision <input type="checkbox"/> Retrofit information <input checked="" type="checkbox"/> Tier 2

This RTB contains troubleshooting information for reducing paper jams.

Please use this RTB to instruct customers.

First, print out the Configuration Page sheet and check the jam counters to see which kinds of jams are occurring most frequently.

Printer version

The screenshot shows the 'Configuration Page' of a Ricoh printer. It displays various settings such as Printer ID, Total Memory, Firmware Version, and Toner Remaining. At the bottom, there is a section for 'Jam Counters' with a red box highlighting the 'Total Counter' value of 85. Below the main configuration page, there is a small table showing the status of various counters.

0, 1, 0 /	0, 0, 0, 0 /	236, 4, 4, 1
-----------	--------------	--------------

Jam Counters:

X,X,X :Tray jam counter, inner jam counter, duplex jam counter

Model: Model MD-P1

Date: 07-Oct-09

No.: RM040005

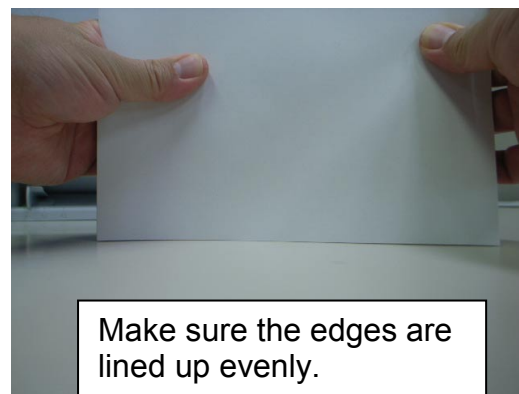
Next, advise the customer on the following:

Paper jam due to wrong paper size setting (Inner Jam)

Make sure that the paper size settings in the user menu (operation panel) and the printer driver and paper tray (side fence and end fence) are the same.

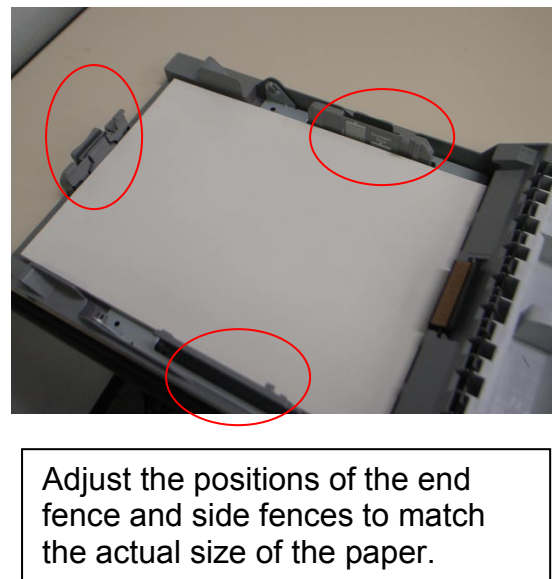
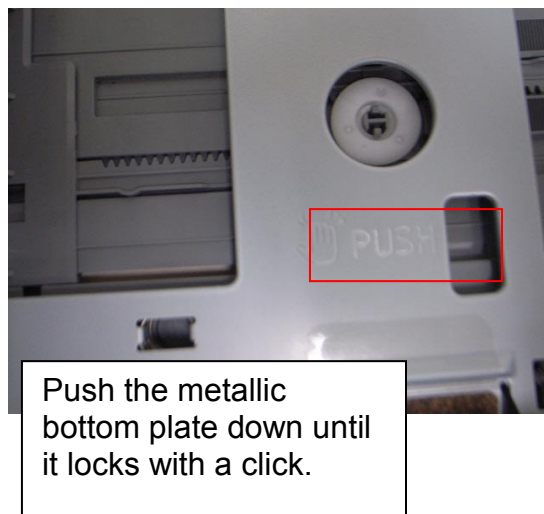
Paper jam by double or multi-feed (Tray jam, inner jam, or duplex jam)

Fan the paper well before loading it in the tray. Also, make sure that the edges are lined up evenly by tapping the stack on a desk or other flat surface. Only add paper when there is none left in the tray.



Paper jam by non-feed (Tray jam)

Make sure to push the metallic bottom plate down all the way (until it locks with a click) before you load the paper in the tray. Also, make sure the end fence and side fences are not too close together, compared to the paper size. (If they are, adjust their positions to match the edges of the paper).



Model: Model MD-P1

Date: 07-Oct-09

No.: RM040005

Paper jam at paper exit (Inner jam)

Up to 150 sheets of plain paper can be stacked in the output tray. If the paper curl is severe, remove the paper from the exit tray stack more frequently. Also, raise the position of the stop fence in the output tray, which will prevent the paper from falling off the tray when you are printing out a large number of sheets.

Paper jam in the fusing unit (Inner jam)

Before you remove paper that is jammed inside the fusing unit, make sure to lower the fusing unit lever first (which releases the fusing pressure). After you remove the jammed paper, return the lever to the locked position.

Model: Model MD-P1		Date: 19-Nov-09	No.: RM040006
Subject: Reset the "x" print cartridge		Prepared by: H.K.	
From: 2nd Overseas Tech Support Sec. 2nd PQM Dept			
Classification:	<input checked="" type="checkbox"/> Troubleshooting <input type="checkbox"/> Mechanical <input type="checkbox"/> Paper path <input type="checkbox"/> Product Safety	<input type="checkbox"/> Part information <input type="checkbox"/> Electrical <input type="checkbox"/> Transmit/receive <input type="checkbox"/> Other ()	<input type="checkbox"/> Action required <input type="checkbox"/> Service manual revision <input type="checkbox"/> Retrofit information <input checked="" type="checkbox"/> Tier 2

SYMPTOM

The alert message, "Reset the (random color/s) print cartridge" is displayed, but the cartridges in question do not need to be reset. If this occurs during printing, the paper jam alert message is also displayed.

CAUSE

Poor grounding of the ITB (image transfer belt)

SOLUTION

1. Remove all AIO cartridges.
2. Remove the transfer unit.
3. Remove the lower fusing entrance guide (1 hook).
4. Remove the waste toner bottle.

5. Follow the flowchart below to check the ground plate terminal and sensor bracket:

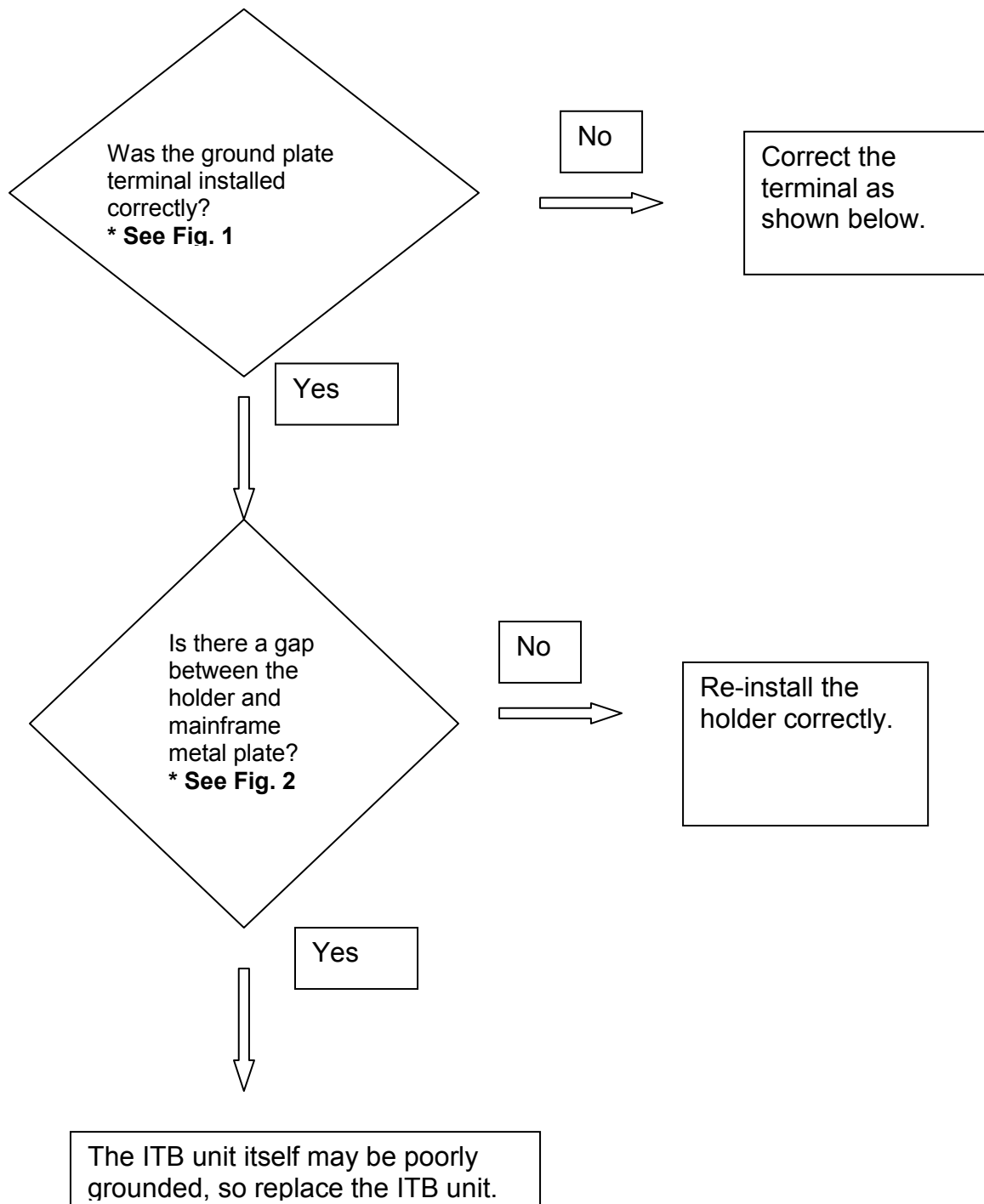


Figure 1

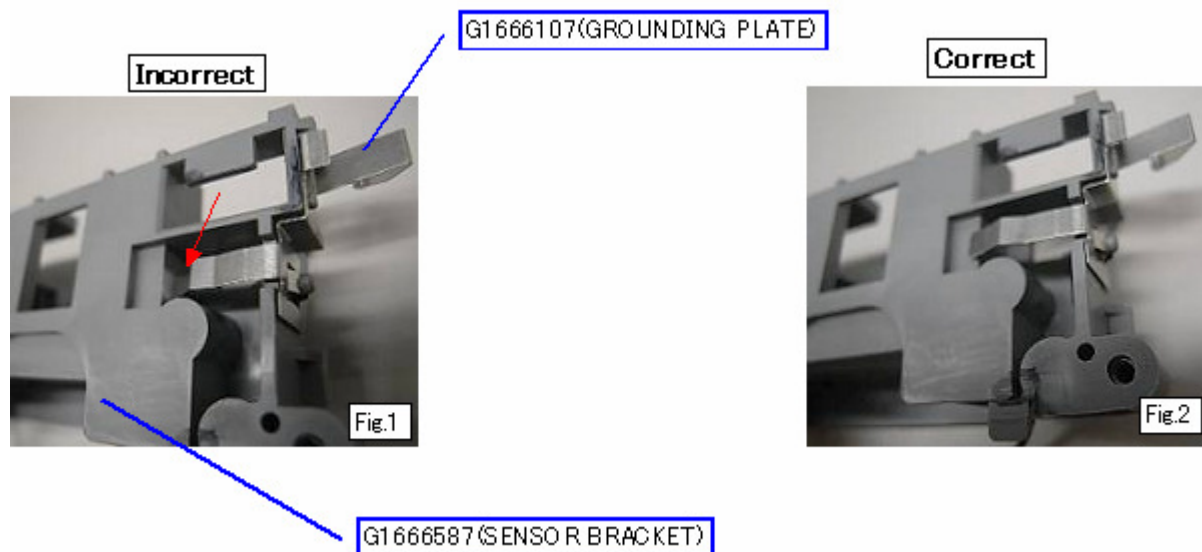
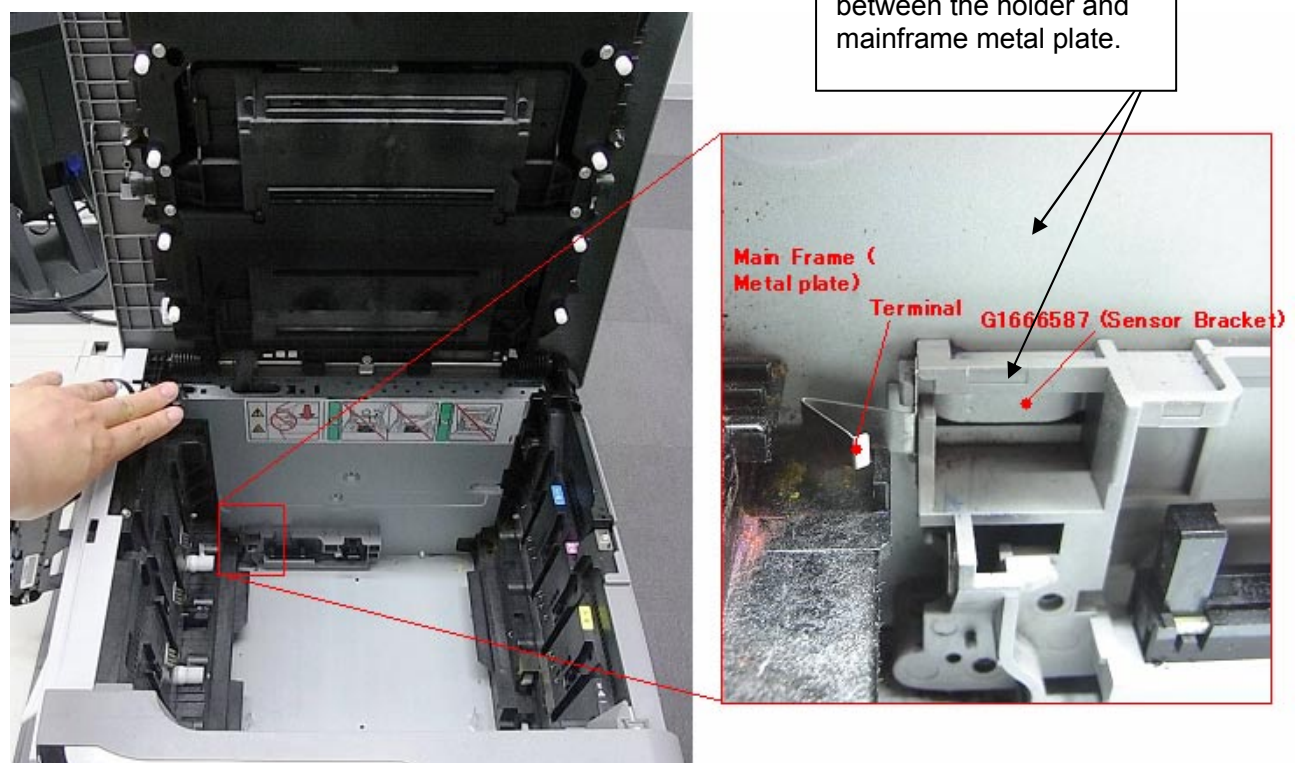


Figure 2



Model: Model MD-P1		Date: 11-Dec-09	No.: RM040007
Subject: Jam Indication cannot be cleared.		Prepared by: H.K.	
From: 2nd Overseas Tech Support Sec. 2nd PQM Dept			
Classification:	<input checked="" type="checkbox"/> Troubleshooting <input type="checkbox"/> Mechanical <input type="checkbox"/> Paper path <input type="checkbox"/> Product Safety	<input checked="" type="checkbox"/> Part information <input type="checkbox"/> Electrical <input type="checkbox"/> Transmit/receive <input type="checkbox"/> Other ()	<input type="checkbox"/> Action required <input type="checkbox"/> Service manual revision <input type="checkbox"/> Retrofit information <input checked="" type="checkbox"/> Tier 2

SYMPTOM

1. The "Paper jam" alert message does not clear after jammed paper is removed and the front or top cover is closed.
2. The "Toner End" alert message does not clear after the print cartridge is replaced at Toner End. Following this, if the main power switch is turned OFF/ON, the message changes to "Irregular toner".

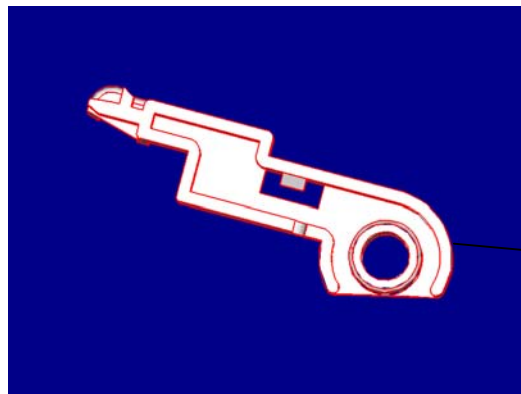
CAUSE

The interlock switch arm (G1665747) breaks, which causes the torsion spring to open up too far. As a result, the interlock switch lever cannot be shifted and the interlock switches are not released, preventing the machine from detecting the cover open condition.

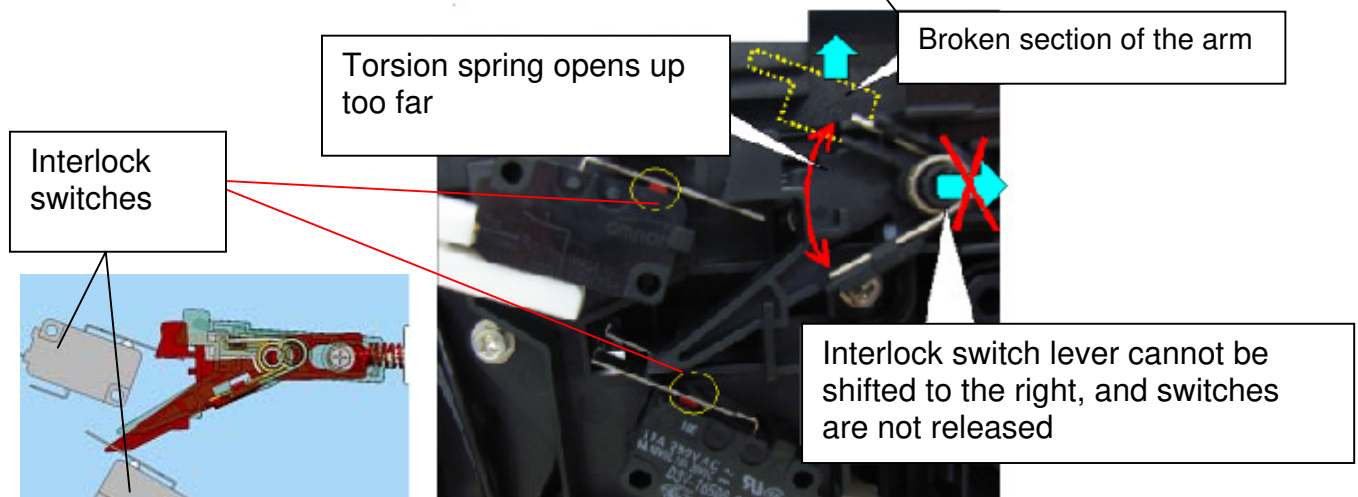
Model: Model MD-P1

Date: 11-Dec-09

No.: RM040007



Interlock switch arm



SOLUTION

In the field

Replace the interlock switch arm with a new one (G1665754).

On the production line

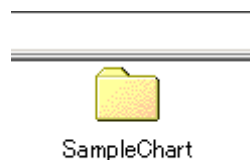
The new interlock switch arm (G1665754) is stronger than the previous one (G1665747).

Applied from: December 2009 production

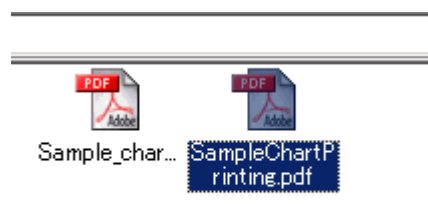
Model: Model MD-P1		Date: 22-Jan-10	No.: RM040008
Subject: Sample Chart PDF in CD		Prepared by: H.K.	
From: 2nd Overseas Tech Support Sec. 2nd PQM Dept			
Classification:	<input type="checkbox"/> Troubleshooting <input type="checkbox"/> Mechanical <input type="checkbox"/> Paper path <input type="checkbox"/> Product Safety	<input type="checkbox"/> Part information <input type="checkbox"/> Electrical <input type="checkbox"/> Transmit/receive <input type="checkbox"/> Other ()	<input type="checkbox"/> Action required <input checked="" type="checkbox"/> Service manual revision <input type="checkbox"/> Retrofit information <input type="checkbox"/> Tier 2

This RTB contains the procedure for checking a sample chart printout in the driver CD for Model PE-MF2/P1E/MD-P1. This procedure is already in the Service Manual and is also available via GKM (Global Knowledge management) DB Tier 0.

1. Select the "SampleChart" folder in the CD drive.



2. Select the file "ChartPrinting.pdf".



Checking a Sample Printout

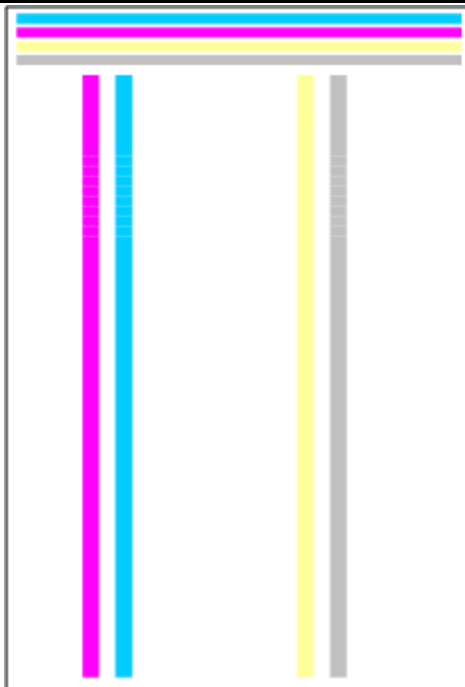
Print out a mono-color pattern (all K, C, M, or Y) to clarify if the cause is a problem with one of the print cartridges, image transfer belt, image transfer roller, or the fusing unit. This sample page is attached to the last page of this manual. If you have a PDF version of this manual, you can print this page. Before printing, you have to adjust the printer driver settings to make the problem become obvious. For details about adjusting the settings, refer to "Printer Driver Setting for Printing a Sample" described below.

- Occurs with 1-3 colors: print cartridge(s) failure
- Occurs with all four colors: Image transfer belt, transfer roller or fusing unit failure

Model: Model MD-P1

Date: 22-Jan-10

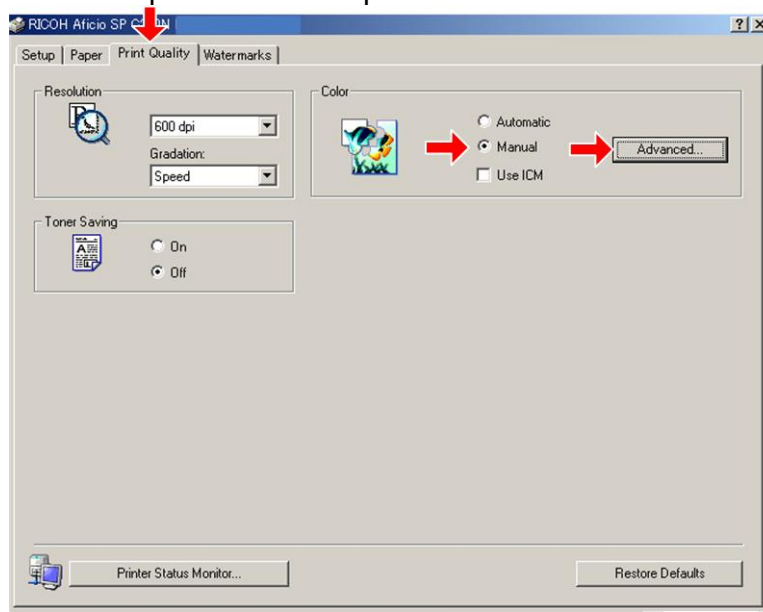
No.: RM040008



g165c502

Printer Driver Setting for Printing a Sample

1. Click "Properties" on the printer driver.



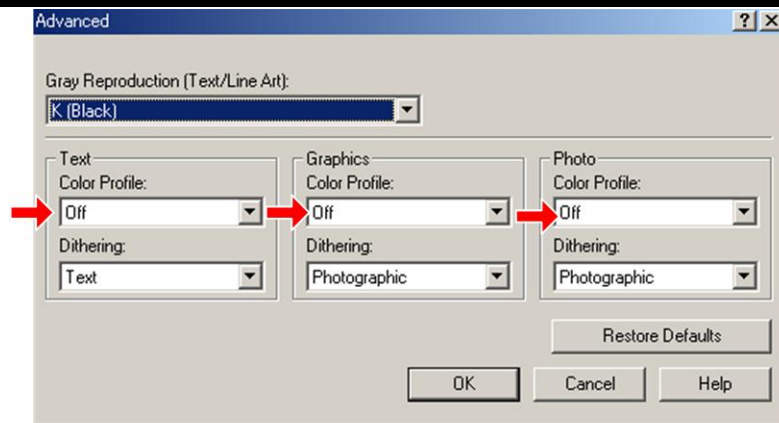
g165c511

2. Click "Print Quality" tab.
3. Check "Manual" in the color setting.
4. Click "Advanced..."

Model: Model MD-P1

Date: 22-Jan-10

No.: RM040008



g165c510

5. Select "Off" from the pull-down menu in the "Color Profile" of the "Text".
6. Select "Off" from the pull-down menu in the "Color Profile" of the "Graphics".
7. Select "Off" from the pull-down menu in the "Color Profile" of the "Photo".

Model: MD-P1		Date: 18-May-10	No.: RM040009
Subject: Laser Optics Housing Replacement		Prepared by: H.K.	
From: 2nd Overseas Tech Support Sec. 2nd PQM Dept			
Classification:	<input checked="" type="checkbox"/> Troubleshooting <input type="checkbox"/> Mechanical <input type="checkbox"/> Paper path <input type="checkbox"/> Product Safety	<input type="checkbox"/> Part information <input type="checkbox"/> Electrical <input type="checkbox"/> Transmit/receive <input type="checkbox"/> Other ()	<input type="checkbox"/> Action required <input checked="" type="checkbox"/> Service manual revision <input type="checkbox"/> Retrofit information <input checked="" type="checkbox"/> Tier 2

The following was added to the Service Manual.

LSU data input (S/M: Page 34)

Do the following after you replace the laser optics housing unit.

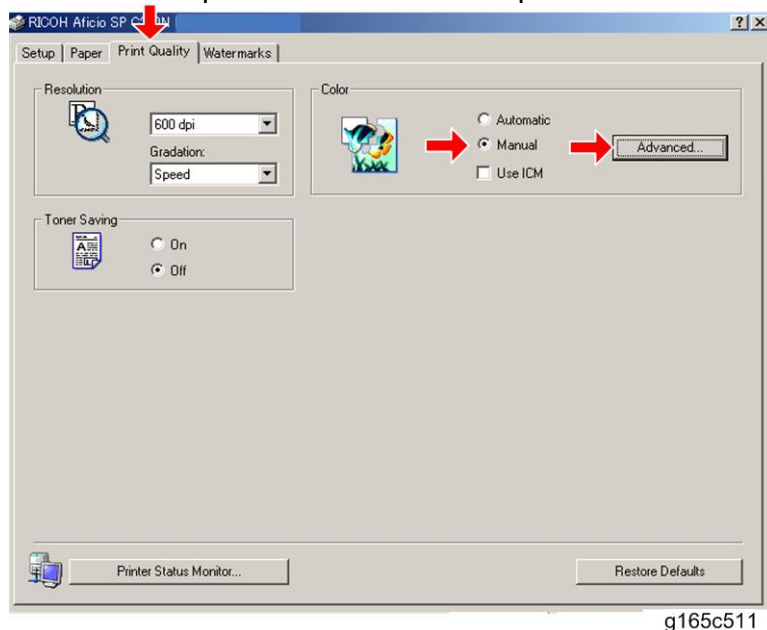
1. Perform Color Registration inside the "SP Mode 2" tab.
2. Turn the main switch OFF/ON.
Note: MUSIC will be performed automatically.
3. Print out the following test chart and make sure that MUSIC was performed successfully.
See the procedure below



4. If necessary, adjust the registration settings for the front and rear sides of each paper tray inside the "SP Mode 2" tab.

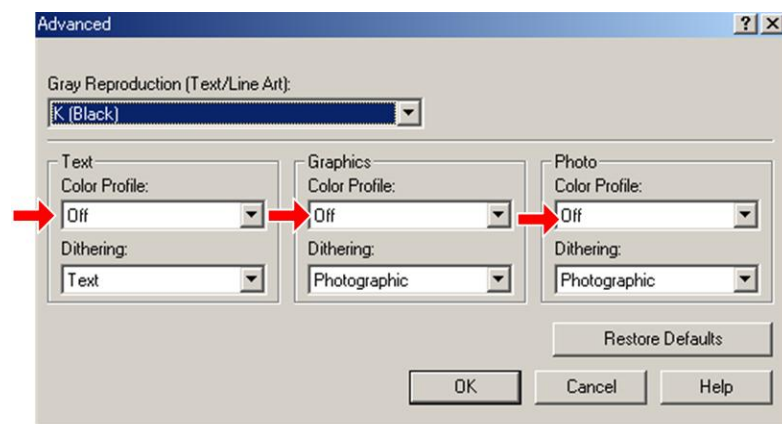
Printing out the test chart to make sure MUSIC was performed correctly

1. Click the "Properties" tab inside the printer driver.



g165c511

2. Click the "Print Quality" tab.
3. Select the "Manual" radio button.
4. Click [Advanced...].
5. Select "Off" for the three Color Profile pull-down menus shown (i.e. for Text, Graphics, and Photo modes).



g165c510

6. Click [OK] twice to print out the test chart.
7. Make sure that MUSIC was performed successfully.
See the sample below

- Four sets of vertical lines appear on the test chart (C and k, M and k, Y and k...). In each set, look for any vertical lines that are aligned within the region defined by "OK".

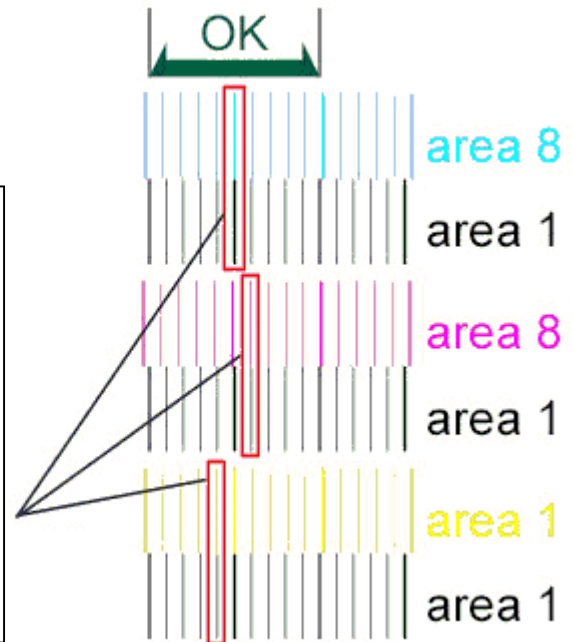
Model: MD-P1

Date: 18-May-10

No.: RM040009

- If all sets have at least one set of vertical lines that are aligned, MUSIC has been performed successfully.
- If MUSIC has not been performed successfully, do the procedure on the next page.

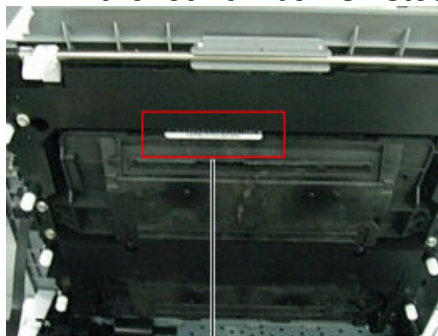
In each region/area, at least one set of vertical lines is aligned.



If MUSIC has not been performed successfully, do the following:

1. Open the upper cover and check the lot number of the laser optics housing unit.
2. Check to see if this lot number is listed in any of the Excel files attached below.

If the lot number is listed in one of the Excel files, do Steps 3-8 below.



Model: MD-P1

Date: 18-May-10

No.: RM040009

3. Open the front cover and turn on the machine.
4. Program the settings for the laser optics housing unit.
 - In the SOM utility, access "LSU Adjustment" inside the "SP Mode 2" tab.
 - Copy the corresponding LSU data inside the Excel sheet into the space provided in the SOM utility.
5. Close the front cover.
6. Execute "Color Registration", which is inside the "SP Mode 2" tab.
7. Turn the main switch OFF/ON.

Note: MUSIC will be performed automatically.
8. Adjust the registration settings for each tray for the front and rear sides of the paper with the "SP Mode 2" tab if necessary.



LSU Lot no. Data

KMI1080100001-KM I1080100077a.xls	KMI1080700001-KM I1080700168a.xls	KPE1071100089-KP E1071104999a.xls	KPE1071105000-KP E107111013a.xls	KPE1071200001-KP E1071203999a.xls	KPE1071204000-KP E1071208616a.xls
KPE1080100001-KP E1080103999a.xls	KPE1080104000-KP E1080106999a.xls	KPE1080107000-KP E1080108927a.xls	KPE1080200001-KP E1080203999a.xls	KPE1080204000-KP E1080207999a.xls	KPE1080208000-KP E1080301444a.xls
KPE1071204567-KP E1080304899a.xls	KPE1080304900-KP E1080400499a.xls	KPE1080400500-KP E1080404299a.xls	KPE1080404300-KP E1080502255a.xls	KPE1080502256-KP E1080505248a.xls	KPE1080505249-KP E1080601116a.xls
KPE1080601117-KP E1080604545a.xls	KPE1080604546-KP E1080703301a.xls	KPM0000000002a.xl s	KPP1071000002a.xl s	RPE0800000006a.xl s	

Reissued:22-Sept-10

Model: Model MD-P1	Date: 08-Jun-10	No.: RM040010a
--------------------	-----------------	----------------

RTB Reissue

The items in ***bold italics*** were corrected or added.

Subject: Bracket & Holder		Prepared by: H.K.	
From: 2nd Overseas Tech Support Sec. 2nd PQM Dept			
Classification :	<input type="checkbox"/> Troubleshooting <input type="checkbox"/> Mechanical <input type="checkbox"/> Paper path <input type="checkbox"/> Product Safety	<input checked="" type="checkbox"/> Part information <input type="checkbox"/> Electrical <input type="checkbox"/> Transmit/receive <input type="checkbox"/> Other ()	<input type="checkbox"/> Action required <input type="checkbox"/> Service manual revision <input type="checkbox"/> Retrofit information <input type="checkbox"/> Tier 2

Old part number	New part number	Description	Q'ty	Int	<i>M040</i>	<i>M041</i>
G1631139	M0751139	BRACKET:TRANSPORT:PAPER FEED DRIVE	1 - 1	X/X	O/O as a set	<i>O/O as a set</i>
G1631140	M0751140	CLUTCH SHAFT HOLDER	1 - 1	X/X		
<i>G1635417</i>	<i>G1635439</i>	<i>HARNESS:EGB:MECHANICAL DRIVE SECTION (M041)</i>	<i>1 - 1</i>	<i>X/X</i>		

Change: The shapes of the parts listed were changed.

Reason: Parts standardization

Important:

- If you replace the old bracket or old holder in the field, make sure to install the new bracket and new holder **together as a set**.
- ***See other important notes about installation on the next page.***

Note:

- ***The old harness is still available as a spare part.***
- These changes were applied from July 2010 production.

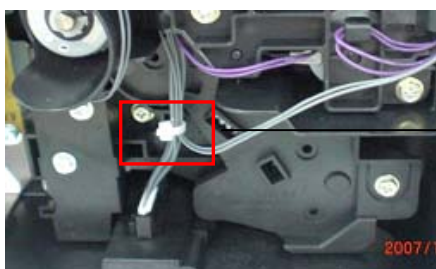
Reissued:22-Sept-10
Model: Model MD-P1
Date: 08-Jun-10
No.: RM040010a

Important notes about parts installation

(M041 machines):

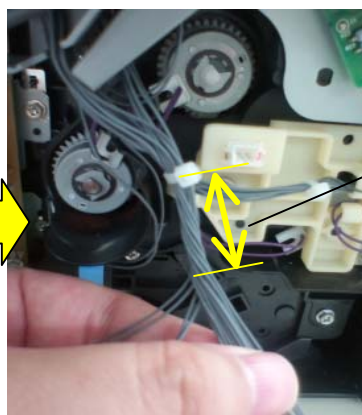
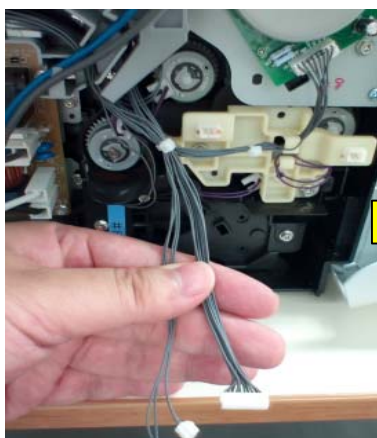
Do the following when you install the new bracket and new holder on old machines:

- 1) Cut the bind of the harness shown below. This is because the harness will be too short when the new parts are attached.**



Cut the bind.

- 2) Twist the harness three or four times as shown below.**



Twist the harness 3 or 4 times as shown.

- 3) Connect the connectors as shown below.**



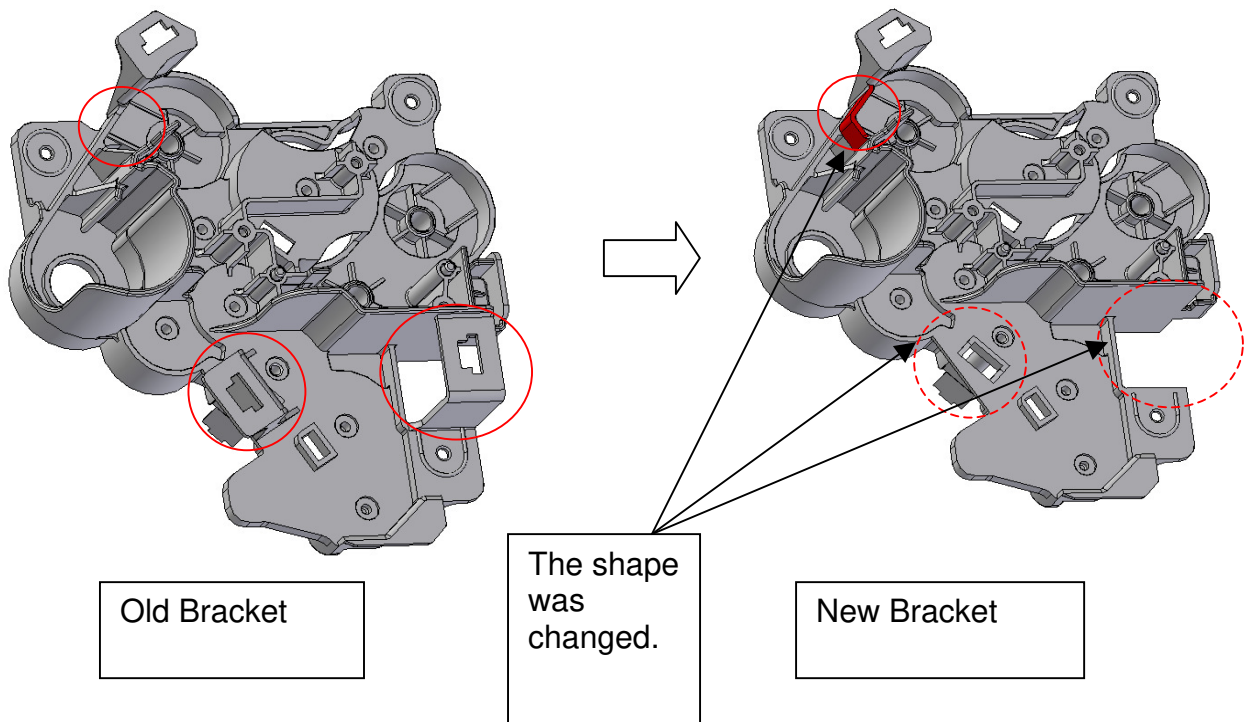
Connect the connectors.

Reissued:22-Sept-10

Model: Model MD-P1

Date: 08-Jun-10

No.: RM040010a

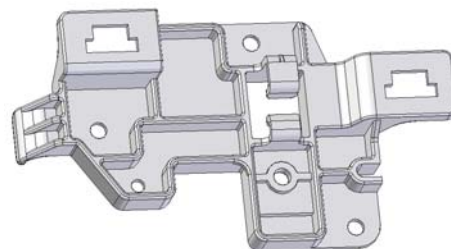
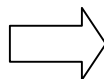
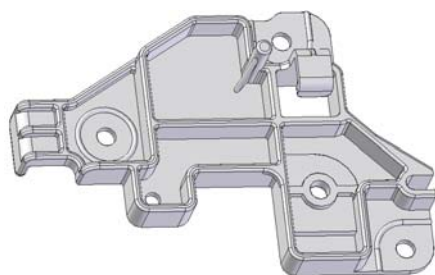


Reissued:22-Sept-10

Model: Model MD-P1

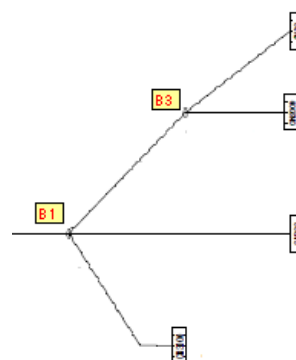
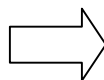
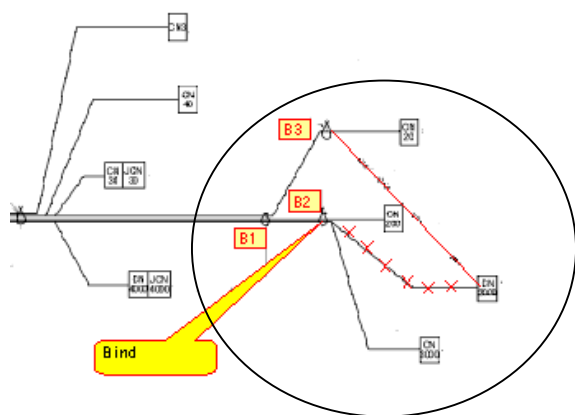
Date: 08-Jun-10

No.: RM040010a



Old Holder

New Holder



Old Harness

New Harness

Reissued:22-Sept-10

Model: Model MD-P1	Date: 08-Jun-10	No.: RM040010a
--------------------	-----------------	----------------

SRD (China) Production

MODEL NAME	V/Hz	DESTINATION	CODE	SERIAL NUMBER
Ricoh Aficio SP C311N	120/60	USA	M040-17	Q92092xxxxx
Gestetner SP C311N Nashuatec SP C311N Rex Rotary SP C311N	220/50, 60	Europe	M040-22	Q92092xxxxx
Ricoh Aficio SP C311N Lanier SP C 311N	220/50, 60	Europe, Asia, etc	M040-27	Q92092xxxxx
Savin SP C 311N Gestetner SP C 311N Lanier SP C 311N	120/60	USA	M040-51	Q92092xxxxx

MODEL NAME	V/Hz	DESTINATION	CODE	SERIAL NUMBER
Ricoh Aficio SP C312DN	120/60	USA	M041-17	Q93092xxxxx
Ricoh Aficio SP C312DN	220/50, 60	China	M041-21	Q93092xxxxx
Gestetner SP C312DN Nashuatec SP C312DN Rex Rotary SP C312DN	220/50, 60	Europe	M041-22	Q93092xxxxx
Ricoh Aficio SP C312DN Lanier SP C312DN	220/50, 60	Europe, Asia, etc	M041-27	Q9309100674
Savin SP C312DN Gestetner SP C312DN Lanier SP C312DN	120/60	USA	M041-51	Q9309100982

Model: Model MD-P1		Date: 22-Sept-10	No.: RM040011
Subject: Paper Tray		Prepared by: H.K.	
From: 2nd Overseas Tech Support Sec. 2nd PQM Dept			
Classification:	<input type="checkbox"/> Troubleshooting <input checked="" type="checkbox"/> Part information <input type="checkbox"/> Action required <input type="checkbox"/> Mechanical <input type="checkbox"/> Electrical <input type="checkbox"/> Service manual revision <input type="checkbox"/> Paper path <input type="checkbox"/> Transmit/receive <input type="checkbox"/> Retrofit information <input type="checkbox"/> Product Safety <input type="checkbox"/> Other () <input type="checkbox"/> Tier 2		

Old part number	New part number	Description	Q'ty	Int	Note
	G1632521	PAPER TRAY:ASS'Y - A4	0 - 1		F
	G1632522	PAPER TRAY:ASS'Y - LT	0 - 1		F
	G1632523	PAPER TRAY:ASS'Y - CHINESE	0 - 1		F
	G1632606	DECAL:PAPER TRAY:SIDE FENCE	0 - 1		A
G1632553	M0752617	SIDE FENCE:LEFT	1 - 1	X/X	C
	M0752553	COVER:SIDE FENCE:LEFT	0 - 1		B
G1632554	M0752621	SIDE FENCE:RIGHT	1 - 1	X/X	C
	M0752554	COVER:SIDE FENCE:RIGHT	0 - 1		B
	M0752610	COMPRESSION SPRING:LOCK:SIDE FENCE	0 - 1		C
	M0752612	LEVER:LOCK:SIDE FENCE	0 - 1		C
	M0752622	PAWL:LOCK:SIDE FENCE	0 - 1		C
	M0752625	RETAINER:PINION	0 - 1		C
G1632564	M0752564	COMPRESSION SPRING:BASE:RIGHT	1 - 1	X/X	D
G1632568	M0752562	BASE	1 - 1	X/X	D
G1632579	M0752579	COMPRESSION SPRING:BASE:LEFT	1 - 1	X/X	D
G1632601	M0752601	END FENCE	1 - 1	X/X	E
G1632602		END FENCE:PRESSURE	1 - 0	X/X	D
G1632603		COMPRESSION SPRING:END FENCE	1 - 0	X/X	D
	M0752611	PAWL:LOCK:END FENCE	0 - 1		E
	M0752612	LEVER:LOCK:SIDE FENCE	0 - 1		E
	M0752613	CLICK:END FENCE	0 - 1		E
	M0752614	STAY:END FENCE	0 - 1		E
	M0752610	COMPRESSION SPRING:LOCK:SIDE FENCE	0 - 2		E
	M0752615	PLATE:END FENCE	0 - 1		E
G1632560	M0752560	EXTENSION TRAY:END FENCE	1 - 1	X/X	E

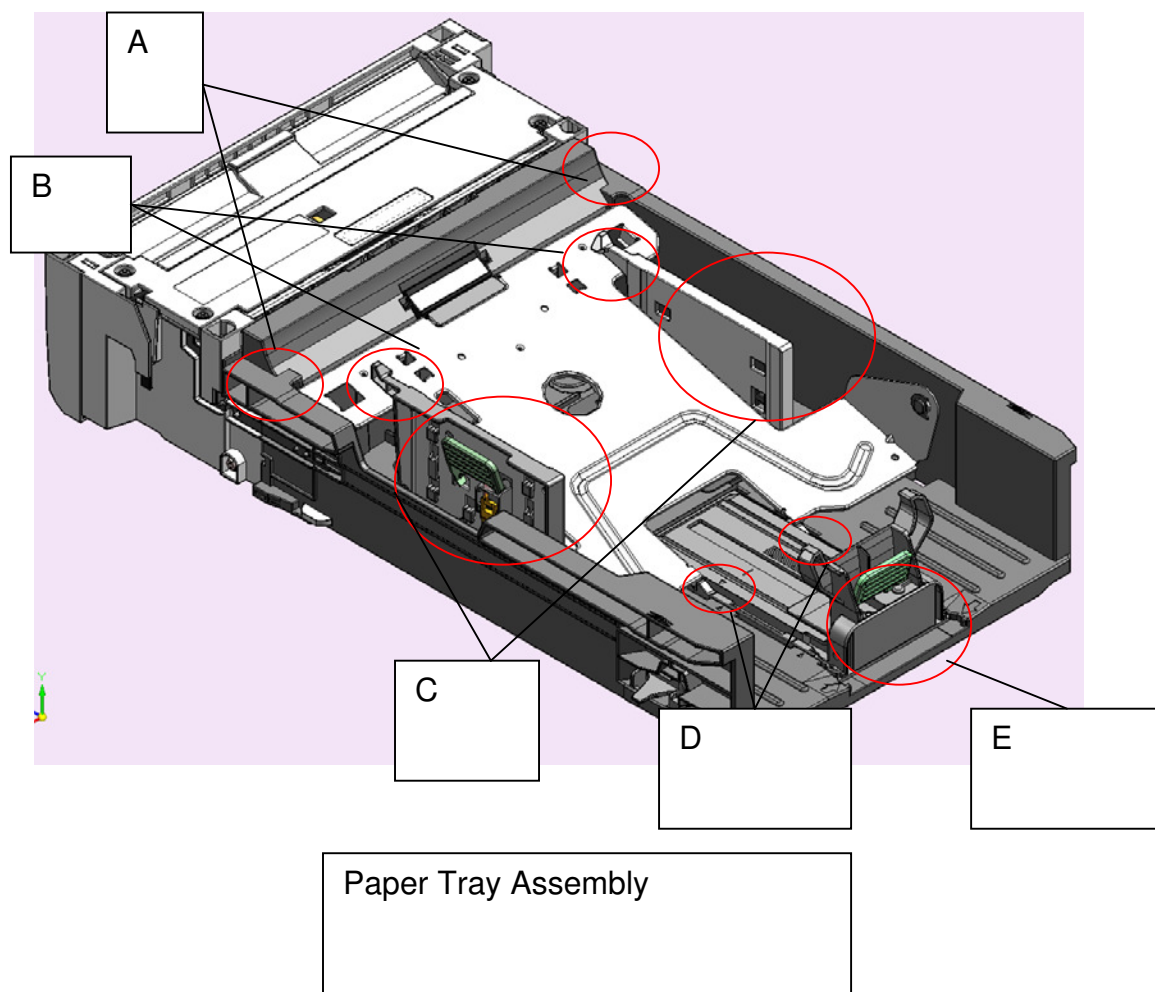
Model: Model MD-P1

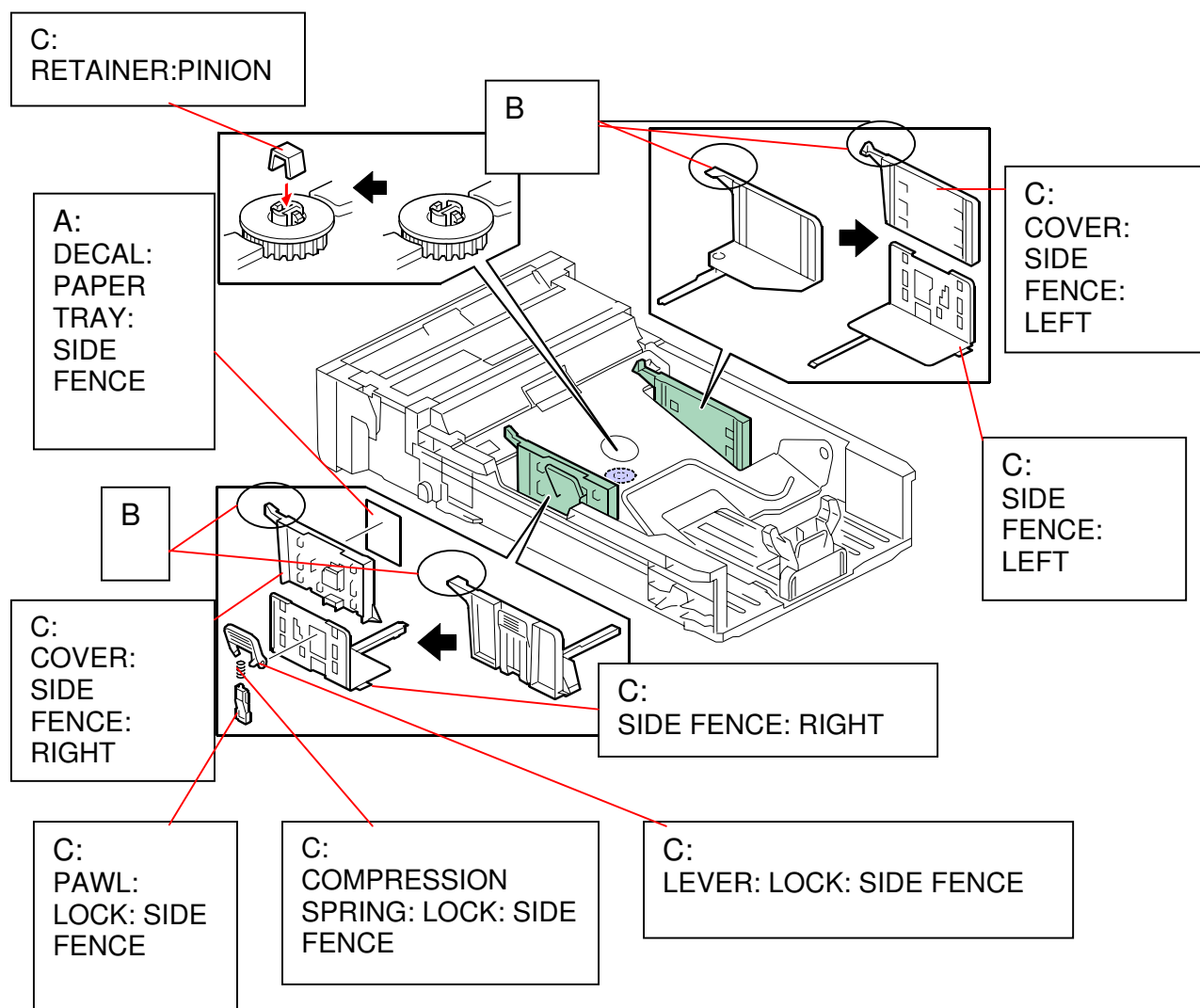
Date: 22-Sept-10

No.: RM040011

Change: The shapes of the paper tray components were changed.**Reason:**

- 1) To make paper loading easier
- 2) Parts standardization

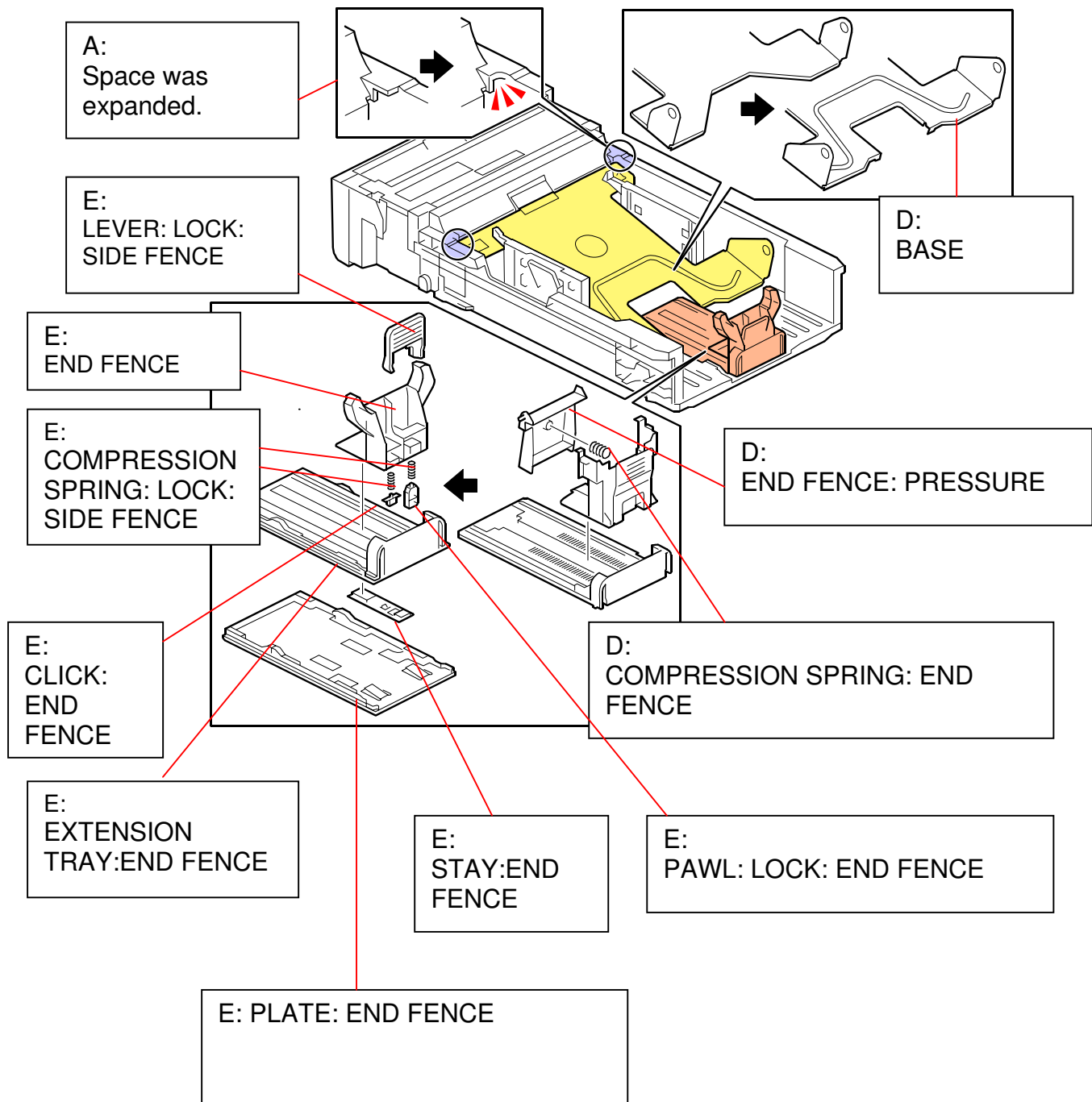
See details below.



Model: Model MD-P1

Date: 22-Sept-10

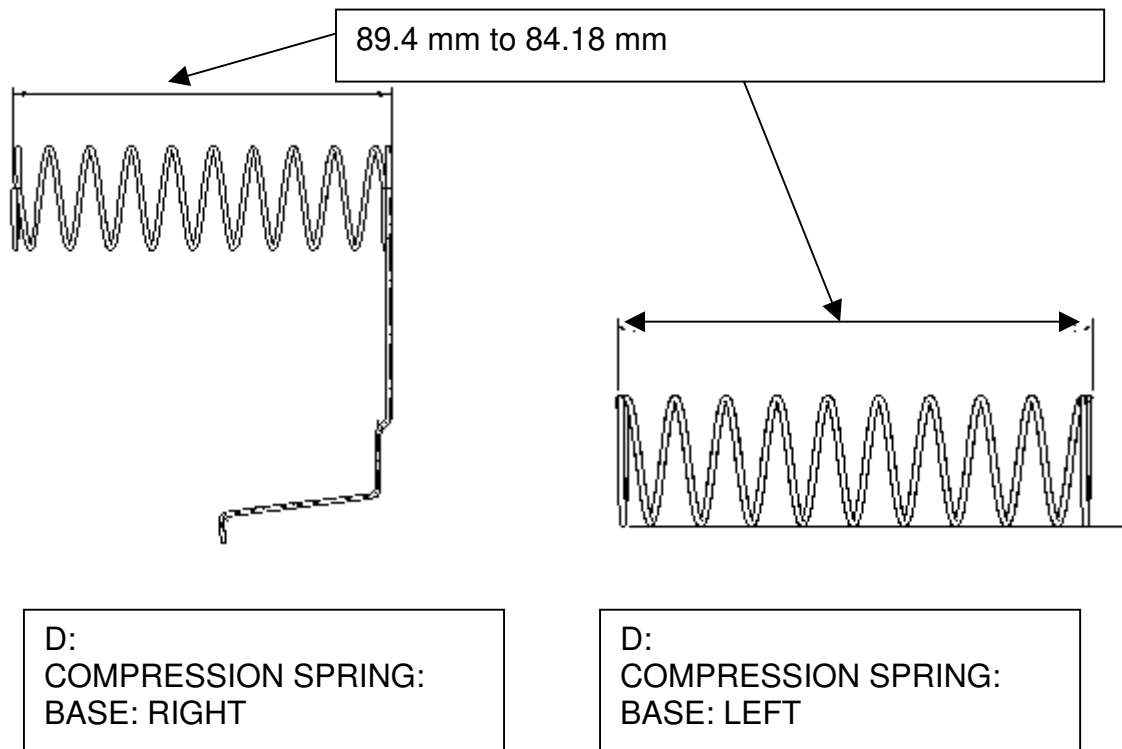
No.: RM040011



Model: Model MD-P1

Date: 22-Sept-10

No.: RM040011



Changes:

A:

The space for loading paper in the paper cassette assembly was expanded. Also, a decal was added to the right fence (lever side).

B:

The shapes of the tips of the side fences were changed.

C:

The lever for controlling the side fence movement was changed to the metal spring loaded lever. Also, the material of the side fences was changed from a resin to a metal. Lastly, a pinion retainer was added (to improve the movement of the pinion gear).

D:

The pressure plate for the end fence was deleted. (The end fence will apply pressure to the paper stack when the bottom plate is lifted up). The base compression springs were strengthened and lengthened from 89.4 mm to 84.18 mm.

Model: Model MD-P1

Date: 22-Sept-10

No.: RM040011

E:

The shape of the end fence was changed (so that it stops at the positions for standard sizes more easily).

Note: All old parts that were modified with an X/X interchangeability are available as spare parts.

F:

The Paper Tray Assembly was newly added as a service part. This assembly includes the Paper Tray Cassette Assembly and Paper Tray Side Fence Decal, and other tray components.

SRD (China) Production

MODEL NAME	V/Hz	DESTINATION	CODE	SERIAL NUMBER
Ricoh Aficio SP C311N	120/60	USA	M040-17	Q92093xxxxx
Gestetner SP C311N Nashuatec SP C311N Rex Rotary SP C311N	220/50, 60	Europe	M040-22	Q92093xxxxx
Ricoh Aficio SP C311N Lanier SP C 311N	220/50, 60	Europe, Asia, etc	M040-27	Q92093xxxxx
Savin SP C 311N Gestetner SP C 311N Lanier SP C 311N	120/60	USA	M040-51	Q92093xxxxx

MODEL NAME	V/Hz	DESTINATION	CODE	SERIAL NUMBER
Ricoh Aficio SP C312DN	120/60	USA	M041-17	Q93093xxxxx
Ricoh Aficio SP C312DN	220/50, 60	China	M041-21	Q9309200681
Gestetner SP C312DN Nashuatec SP C312DN Rex Rotary SP C312DN	220/50, 60	Europe	M041-22	Q93093xxxxx
Ricoh Aficio SP C312DN Lanier SP C312DN	220/50, 60	Europe, Asia, etc	M041-27	Q9309200537
Savin SP C312DN Gestetner SP C312DN Lanier SP C312DN	120/60	USA	M041-51	Q93093xxxxx

Model: MD-P1		Date: 19-Dec-13	No.: RM040012
Subject: Shaft: Paper Feed Roller		Prepared by: H.K.	
From: 3rd Tech Service Sect., MFP/P Tech Service Dept.			
Classification:	<input type="checkbox"/> Troubleshooting <input checked="" type="checkbox"/> Part information <input type="checkbox"/> Action required <input type="checkbox"/> Mechanical <input type="checkbox"/> Electrical <input type="checkbox"/> Service manual revision <input type="checkbox"/> Paper path <input type="checkbox"/> Transmit/receive <input type="checkbox"/> Retrofit information <input type="checkbox"/> Product Safety <input type="checkbox"/> Other () <input type="checkbox"/> Tier 2		

Old part number	New part number	Description	Q'ty	Int	Note
G1662580	M1982580	SHAFT:PAPER FEED ROLLER:PRESS FIT	1 - 1	X/X	O/O as a set
08050089		RETAINING RING - M4	n - n-1		
	H5213355	C RING - PAPER FEED ROLLER	0 - 1	X/X	

Change:

- 1) The width of the e-ring groove in the paper feed roller shaft was increased.
- 2) The e-ring was changed to a C-ring.

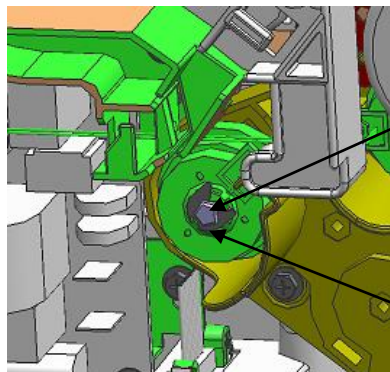
Reason: To facilitate assembly.

Model: MD-P1

Date: 19-Dec-13

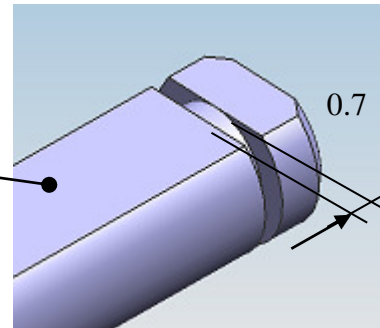
No.: RM040012

Old

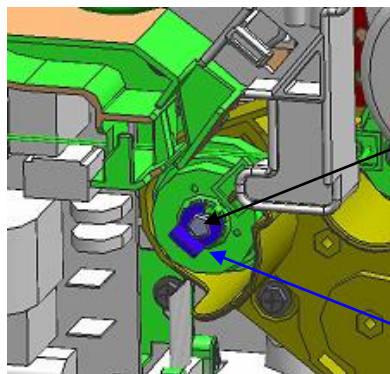


G1662580 Paper Feed Roller Shaft

08050089 E-ring

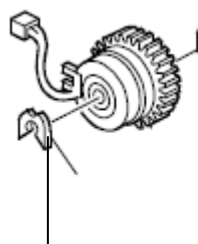
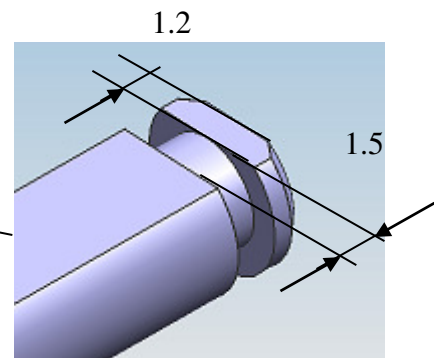


New



M1982580 Paper Feed Roller Shaft

H5213355 C-ring



08050089 → H5213355

Model: MD-P1

Date: 19-Dec-13

No.: RM040012

SRD (China) Production

MODEL NAME	V/Hz	DESTINATION	CODE	SERIAL NUMBER
Ricoh Aficio SP C311N	120/60	USA	M040-17	Spare parts only
Gestetner SP C311N Nashuatec SP C311N Rex Rotary SP C311N	220/50, 60	Europe	M040-22	Spare parts only
Ricoh Aficio SP C311N Lanier SP C 311N	220/50, 60	Europe, Asia, etc	M040-27	Spare parts only
Savin SP C 311N Gestetner SP C 311N Lanier SP C 311N	120/60	USA	M040-51	Spare parts only

MODEL NAME	V/Hz	DESTINATION	CODE	SERIAL NUMBER
Ricoh Aficio SP C312DN	120/60	USA	M041-17	Spare parts only
Ricoh Aficio SP C312DN	220/50, 60	China	M041-21	Spare parts only
Gestetner SP C312DN Nashuatec SP C312DN Rex Rotary SP C312DN	220/50, 60	Europe	M041-22	Spare parts only
Ricoh Aficio SP C312DN Lanier SP C312DN	220/50, 60	Europe, Asia, etc	M041-27	Spare parts only
Savin SP C312DN Gestetner SP C312DN Lanier SP C312DN	120/60	USA	M041-51	Spare parts only