

Reissued: 09-Jul-13

Model: AI-P2	Date: 28-Sep-12	No.: RM132001a
--------------	-----------------	----------------

RTB Reissue

The items in ***bold italics*** have been added.

Subject: Firmware Release Note: Engine		Prepared by: T. Hirakawa	
From: 2nd Tech Service Sect., MFP/Printer Tech Service Dept.			
Classification:	<input type="checkbox"/> Troubleshooting <input type="checkbox"/> Mechanical <input type="checkbox"/> Paper path <input type="checkbox"/> Product Safety	<input type="checkbox"/> Part information <input type="checkbox"/> Electrical <input type="checkbox"/> Transmit/receive <input checked="" type="checkbox"/> Other (Firmware)	<input type="checkbox"/> Action required <input type="checkbox"/> Service manual revision <input type="checkbox"/> Retrofit information <input checked="" type="checkbox"/> Tier 2

This RTB has been issued to announce the firmware release information for the **Engine**.

Version	Program No.	Effective Date	Availability of RFU
<i>1.01:01</i>	<i>M1325700B</i>	<i>August 2013 production</i>	<i>Available</i>
1.00:01	M1325700A	1st Mass production	Available

Note: Definition of Availability of RFU via @Remote
"Available" The firmware can be updated via RFU or SD card.

"Not available": The firmware can only be updated via SD card.

Version	Modified Points or Symptom Corrected
<i>1.01:01</i>	<i>Other changes: The detection conditions of SC355-00 (Grayscale Measurement Error) were changed so as to avoid unnecessary occurrences of this SC.</i>
1.00:01	1st Mass production

Reissued: 20-Sep-16

Model: AI-P2	Date: 28-Sep-12	No.: RM132002f
--------------	-----------------	----------------

RTB Reissue

The items in bold italics have been added.

Subject: Firmware Release Note: Network Support		Prepared by: R. Tsurumi	
From: 1st Tech Service Sect., MFP/Printer Tech Service Dept.			
Classification:	<input type="checkbox"/> Troubleshooting <input type="checkbox"/> Mechanical <input type="checkbox"/> Paper path <input type="checkbox"/> Product Safety	<input type="checkbox"/> Part information <input type="checkbox"/> Electrical <input type="checkbox"/> Transmit/receive <input checked="" type="checkbox"/> Other (Firmware)	<input type="checkbox"/> Action required <input type="checkbox"/> Service manual revision <input type="checkbox"/> Retrofit information <input checked="" type="checkbox"/> Tier 2

This RTB has been issued to announce the firmware release information for the **Network Support**.

Version	Program No.	Effective Date	Availability of RFU
12.38	<i>M1325754G</i>	<i>October 2016 production</i>	<i>Available</i>
12.37	M1325754F	June 2016 production	Available
12.36	M1325754E	March 2016 production	Available
12.35.1	M1325754D	Jun 2014 production	Available
12.35	M1325754C	May 2014 production	Available
12.34.2	M1325754B	August 2013 production	Available
12.29	M1325754A	1st Mass production	Available

Note: Definition of Availability of RFU via @Remote
"Available" The firmware can be updated via RFU or SD card.

"Not available": The firmware can only be updated via SD card.

Version	Modified Points or Symptom Corrected
12.38	<i>Other Changes:</i> <i>Added support for adhering to the Lot 6 regulation of the EU in European devices.</i>
12.37	Other changes: Supports IPv6 and DNS communication with @Remote.
12.36	Other changes: - When printing from the Windows operating system, if the RAW protocol is used for the standard TCP/IP port, a significant amount of time might pass until the next job is printed. Because of this, the initial print timeout period is changed to 15 seconds and the shortest timeout period that can be set is changed to 5 seconds. Symptom corrected: 1. When the device is in Energy Saver Mode, if information about the network interface for the device is being obtained from the SNMP Manager application, nonexistent errors are recorded in the system logs.1. 2. When the display language of the operation panel is set to Catalan, Scan to Folder fail 3. Changed the DH key specification to use 2,048 bits instead of 512 bits to

Reissued: 20-Sep-16

Model: AI-P2	Date: 28-Sep-12	No.: RM132002f
--------------	-----------------	----------------

Version	Modified Points or Symptom Corrected
	prevent the Logjam vulnerability (CVE-2015-4000). In addition, by modifying this specification, SSL/TLS communication can be established when using Mac OS X 10.10.4 and iOS 8.4.
12.35.1	<p>Symptom corrected:</p> <ul style="list-style-type: none"> - [Embedded RC Gate]: "@Remote certificate updating..." is displayed and @Remote communication is suspended if SSL communication with a router or proxy server was suspended due to no response or detection of RESET signal. <p><u>Note:</u></p> <ul style="list-style-type: none"> - A certificate update indicates that a request to update the certificate was sent to the @Remote Center instead of performing the retry process. - To apply this change, make sure to update to System (Ver 1.06) or later.
12.35	<p>Symptom corrected:</p> <ol style="list-style-type: none"> 1. Cannot scan to shared folders in Mac OS X 10.7 or Mac OS X 10.8. <ul style="list-style-type: none"> - This firmware is dependent on the following firmware modules. Please be sure to update all of them: System/Copy firmware v1.05 (M1325751D) or later 2. When DHCP is enabled and the network settings are changed, it might take more than two minutes for the settings to finish updating. 3. When simultaneously printing from AppleTalk on a Mac and a protocol other than AppleTalk in Windows, an SC899 error might occur. 4. When PEAP or TTLS is used as the IEEE 802.1X authentication method and the server certification check is disabled, the IP address might not be obtained after the device is restarted.
12.34.2	<p>Symptom corrected:</p> <ol style="list-style-type: none"> 1. When the machine goes into Low Power Mode, the Energy Saver button's light might not fade in and out. 2. If the MFP acquires its hostname from DHCP, the NCS daemon's boot process will restart. While NCS is restarting, it is unable to respond to requests from the printing system to start some of the printing-related services (diprint, lpd, usbd, wsprnd...). 3. DHCP option 204 has no effect on device settings. 4. If the device is unable to login to Active Directory (because of a bad password for example), it will continue to try logging in and the account will eventually be locked. This only occurred when Kerberos Authentication was being used. 5. If NBT is disabled, the destination for Scan to Folder might not be displayed and Windows authentication might fail. 6. Cannot scan to shared folders in Windows 8. 7. SMB timeout increased to 20 seconds (from 10 seconds). 8. Unable to set the Mask Length in Configuration > User Authentication Management when the user sets the IPv6 Access Control Range as Mask in Configuration > Security > Access Control in the Web Image Monitor. 9. Although the LLMNR of IPv4 and IPv6 are enabled in Web Image Monitor, it might not affect the printed result of the NIB Summary (SP5-990-007) and/or the Print List in Interface Settings of System Settings. 10. When DHCP v6 is enabled, turning the power off and then on might cause a memory leak.

Reissued: 20-Sep-16

Model: AI-P2	Date: 28-Sep-12	No.: RM132002f
--------------	-----------------	----------------

Version	Modified Points or Symptom Corrected
12.29	1st Mass production

Reissued: 28-Aug-13

Model: AI-P2	Date: 28-Sep-12	No.: RM132003a
--------------	-----------------	----------------

RTB Reissue

The items in bold italics have been added.

Subject: Firmware Release Note: NetworkDocBox		Prepared by: T. Hirakawa	
From: 2nd Tech Service Sect., MFP/Printer Tech Service Dept.			
Classification:	<input type="checkbox"/> Troubleshooting <input type="checkbox"/> Mechanical <input type="checkbox"/> Paper path <input type="checkbox"/> Product Safety	<input type="checkbox"/> Part information <input type="checkbox"/> Electrical <input type="checkbox"/> Transmit/receive <input checked="" type="checkbox"/> Other (Firmware)	<input type="checkbox"/> Action required <input type="checkbox"/> Service manual revision <input type="checkbox"/> Retrofit information <input checked="" type="checkbox"/> Tier 2

This RTB has been issued to announce the firmware release information for the **NetworkDocBox**.

Version	Program No.	Effective Date	Availability of RFU
<i>1.01</i>	<i>M1325757B</i>	<i>August 2013 production</i>	<i>Available</i>
1.00	M1325757A	1st Mass production	Available

Note: Definition of Availability of RFU via @Remote

"Available" The firmware can be updated via RFU or SD card.

"Not available": The firmware can only be updated via SD card.

Version	Modified Points or Symptom Corrected
<i>1.01</i>	<i>Symptom correct: When "Smart Device Monitor for Admin Accounting Report Package" is used to clear the device's user counters, the time that the counters were cleared manually is not recorded.</i>
1.00	1st Mass production

Reissued: 15-Sep-16

Model: AI-P2	Date: 25-Oct-12	No.: RM132004e
--------------	-----------------	----------------

RTB Reissue

The items in bold italics have been corrected or added.

Subject: Firmware Release Note: OpePanel		Prepared by: R. Tsurumi	
From: 1st Tech Service Sect., MFP/Printer Tech Service Dept.			
Classification:	<input type="checkbox"/> Troubleshooting <input type="checkbox"/> Mechanical <input type="checkbox"/> Paper path <input type="checkbox"/> Product Safety	<input type="checkbox"/> Part information <input type="checkbox"/> Electrical <input type="checkbox"/> Transmit/receive <input checked="" type="checkbox"/> Other (Firmware)	<input type="checkbox"/> Action required <input type="checkbox"/> Service manual revision <input type="checkbox"/> Retrofit information <input checked="" type="checkbox"/> Tier 2

This RTB has been issued to announce the firmware release information for the **OpePanel**.

Version	Program No.	Effective Date	Availability of RFU
1.09	M1321490L	October 2016 production	Available
1.08	M1321490K	April 2016 production	Available
1.07	M1321490J	October 2013 production	Available
1.06	M1321490H	July 2013 production	Available
1.05	M1321490G	April 2013 production	Available
1.03.2	M1321490E	1st Mass production	Available

Note: Definition of Availability of RFU via @Remote
“Available”: The firmware can be updated via RFU or SD card.

“Not available”: The firmware can only be updated via SD card.

Version	Modified Points or Symptom Corrected
1.09	Other changes: - Added support for adhering to the Lot 6 regulation of the EU in European devices.
1.08	Other changes: Support for the Portuguese orthography.
1.07	Symptom corrected: Minor bug correction.
1.06	Symptom corrected: Some text in French/Czech for some button/key is too large to fit inside the button/key.
1.05	Symptom corrected: The button for the English language in Switchable Language settings is empty when the machine is set to another language.
1.03.2	1st Mass production IMPORTANT: This firmware version (v1.03.2) is not an updated version of v1.03. These two versions are exactly the same, so there is no need to update from one to the other.

Reissued: 14-Sep-16

Model: AI-P2	Date: 28-Sep-12	No.: RM132006d
---------------------	-----------------	----------------

RTB Reissue

The items in bold italics have been added.

Subject: Firmware Release Note: Web Support		Prepared by: R. Tsurumi	
From: 1st Tech Service Sect., MFP/Printer Tech Service Dept.			
Classification:	<input type="checkbox"/> Troubleshooting <input type="checkbox"/> Mechanical <input type="checkbox"/> Paper path <input type="checkbox"/> Product Safety	<input type="checkbox"/> Part information <input type="checkbox"/> Electrical <input type="checkbox"/> Transmit/receive <input checked="" type="checkbox"/> Other (Firmware)	<input type="checkbox"/> Action required <input type="checkbox"/> Service manual revision <input type="checkbox"/> Retrofit information <input checked="" type="checkbox"/> Tier 2

This RTB has been issued to announce the firmware release information for the **Web Support**.

Version	Program No.	Effective Date	Availability of RFU
1.03	M1325755E	October 2016 production	Available
1.02	M1325755D	April 2016 production	Available
1.01	M1325755C	July 2013 production	Available
1.00.2	M1325755B	October 2012 production	Available
1.00.1	M1325755A	1st Mass production	Available

Note: Definition of Availability of RFU via @Remote
"Available" The firmware can be updated via RFU or SD card.

"Not available": The firmware can only be updated via SD card.

Version	Modified Points or Symptom Corrected
1.03	Other changes: <ul style="list-style-type: none"> - Added support for adhering to the Lot 6 regulation of the EU in European devices.
1.02	Symptom corrected: <ul style="list-style-type: none"> - When the following settings are enabled, print jobs that have been conducted are not displayed on the job history screen: <ul style="list-style-type: none"> - On the operation panel: User Tools > Printer Features > System tab > Store and Skip Errored Job - In Web Image Monitor: Device Management > Configuration > Printer > Basic Settings > Store and Skip Errored Job This firmware is dependent on System firmware v1.10 (M1325751H) or later, so please be sure to update it. <ul style="list-style-type: none"> - Other changes: <ul style="list-style-type: none"> - Support for the Portuguese orthography.
1.01	Specification change: <p>Compliant with Blue Angel regulations.</p> Error Correction: <ol style="list-style-type: none"> 1. When using the web development tools like Firebug in Web Image Monitor, users who do not have the authority of editing might even be able

Reissued: 14-Sep-16

Model: AI-P2		Date: 28-Sep-12	No.: RM132006d
Version	Modified Points or Symptom Corrected		
	<p>to edit the administrative privileges of each.</p> <p>2. The following problems occur in Web Image Monitor when using Windows Internet Explorer 10:</p> <ul style="list-style-type: none"> - Cannot select, drag, delete, or move icons in Device Management > Device Home Management > Edit Icons. - Cannot drag selected items or display or hide items in Device Management > Address Book > Maintenance > Items Displayed in Address List. - When adding icons in Device Management > Device Home Management > Edit Icons, the column headings of the table are out of alignment. - When adding a user in Device Management > Address Book > Address List (Display All Items), the column headings of the table are out of alignment. <p>3. If the device encounters an unrecoverable error, the unrecoverable error will not be displayed in WIM. WIM will show the device status as "OK".</p> <p>4. Even using a valid image file, errors occur when an image is added to the Home Screen (Device Management > Device Home Management > Home Screen Settings > Insert Image).</p>		
1.00.2	Symptoms corrected: Minor bug correction		
1.00.1	1st Mass production		

Model: AI-P2	Date: 28-Sep-12	No.: RM132007
---------------------	-----------------	---------------

Subject: Firmware Release Note: Option Netware		Prepared by: T. Hirakawa	
From: 1st Tech Service Sect., MFP/Printer Tech Service Dept			
Classification:	<input type="checkbox"/> Troubleshooting	<input type="checkbox"/> Part information	<input type="checkbox"/> Action required
	<input type="checkbox"/> Mechanical	<input type="checkbox"/> Electrical	<input type="checkbox"/> Service manual revision
	<input type="checkbox"/> Paper path	<input type="checkbox"/> Transmit/receive	<input type="checkbox"/> Retrofit information
	<input type="checkbox"/> Product Safety	<input checked="" type="checkbox"/> Other (Firmware)	<input checked="" type="checkbox"/> Tier 2

This RTB has been issued to announce the firmware release information for the **Option Netware**.

Version	Program No.	Effective Date	Availability of RFU
12.19	D6405753	1st Mass production	Available

Note: Definition of Availability of RFU via @Remote

“Available” The firmware can be updated via RFU or SD card.

“Not available”: The firmware can only be updated via SD card.

Version	Modified Points or Symptom Corrected
12.19	1st Mass production

Reissued: 23-Mar-17

Model: AI-P2	Date: 28-Sep-12	No.: RM132008g
--------------	-----------------	----------------

RTB Reissue

The items in ***bold italics*** have been corrected or added.

Subject: Firmware Release Note: PCL		Prepared by: R. Tsurumi	
From: 1st Tech Service Sect., MFP/Printer Tech Service Dept.			
Classification:	<input type="checkbox"/> Troubleshooting <input type="checkbox"/> Mechanical <input type="checkbox"/> Paper path <input type="checkbox"/> Product Safety	<input type="checkbox"/> Part information <input type="checkbox"/> Electrical <input type="checkbox"/> Transmit/receive <input checked="" type="checkbox"/> Other (Firmware)	<input type="checkbox"/> Action required <input type="checkbox"/> Service manual revision <input type="checkbox"/> Retrofit information <input checked="" type="checkbox"/> Tier 2

This RTB has been issued to announce the firmware release information for the **PCL**.

Version	Program No.	Effective Date	Availability of RFU
<i>1.09</i>	<i>M1325762J</i>	<i>May 2017 production</i>	<i>Available</i>
1.08	M1325762H	March 2017 production	Available
1.07	M1325762G	June 2016 production	Available
1.06	M1325762F	March 2015 production	Available
1.05	M1325762E	October 2014 production	Available
1.04	M1325762D	May 2014 production	Available
1.03	M1325762C	November 2013 production	Available
1.02	M1325762B	1st Mass production	Available

Note: Definition of Availability of RFU via @Remote
"Available" The firmware can be updated via RFU or SD card.

"Not available": The firmware can only be updated via SD card.

Version	Modified Points or Symptom Corrected
<i>1.09</i>	<i>Symptom corrected: Fonts that are downloaded to an SD card might not be printed.</i>
1.08	Symptom corrected: 1. When characters that contain the incorrect TrueType font data are printed, not only are incorrect characters missing but also are correct characters that follow incorrect characters. (GFPR#RE16030046) 2. An SC899 error occurs when using the PCL6 driver to print a PDF from the Reader application in Windows 8.1. (GFPR#RA15050002) 3. The image quality output from PCL5 data might be poor if the image was created by using certain applications, such as RICOH ProcessDirector. (GFPR#RE15030034) 4. Some lines of text and/or dotted lines might be missing when using the PCL overlay macro. (GFPR#RC16040013)
1.07	SC899 occurs in some firmware versions when printing certain jobs. (GFPR#RE16020028)

Reissued: 23-Mar-17

Model: AI-P2		Date: 28-Sep-12	No.: RM132008g
Version	Modified Points or Symptom Corrected		
1.06	Symptom corrected: 1. Using a bitmap font might result in jobs being cancelled. (GFPR#RE13100030) 2. When printing an N-up PCL6 job by using a printer driver that is for Windows 8 or a later Windows operating system, some characters are missing. 3. If a raster image is specified in the PCL6 driver to be reduced, be enlarged, or undergo N-up printing, unexpected white lines might appear in the printout. (GFPR#RA14080005, GFPR#RA14110005) 4. When printing a PCL5 host-printing job in which 32,000 or more of the fill patterns are specified, the device will stall. 5. If a PCL5 job is printed under certain conditions related to the font header information when using host printing, PCL default fonts are used. (GFPR#RE14100009)		
1.05	Symptom corrected: 1. When printing more than 111,600 bytes of a bitmap font—equivalent to a character that is larger than 39.62mm x 39.62mm—via a driver, an SC899 might occur. 2. If an image size is big and has been enlarged by using the "Reduce/Enlarge" option in the PCL6 driver, unexpected white lines might appear in the printout. 3. PCL jobs with a specified clip range might print unnecessary 1-pixel width lines on the printout. 4. If the glyph data of TrueType fonts includes hinting information that is on the edge of the frame, an SC899 error might occur. (GFPR#RC14030010) 5. When printing certain documents in Microsoft Word, an SC899 error might occur.		
1.04	Symptom corrected: 1. Specific TrueType fonts that include problematic hinting data might cause an SC899 error to occur. (GFPR#RA13030005, GFPR#RE14020031, GFPR#RC14020002, GFPR#RA14030001, GFPR#RC14030010) 2. Text in duplex PCL jobs are shifted and therefore overlap other text when the data is subjected to both of the following conditions: - Specify the frontside of the page by using the <Esc>&a1G command when the current page is the backside. - The offset command <ESC>&l#U or <ESC>&l#Z is used after the drawing command is specified. (GFPR#RC13060012, GFPR#RE14010003) 3. When printing PCL5 jobs that include a scalable font, an SC899 error occurs or the device automatically reboots when fonts have exceeded the 256-character limit available for download. (GFPR#RE14020003)		
1.03	Symptom corrected: 1. Error SC899 caused by PCL jobs names (@PJL JOBNAME) that contain any number of "%" characters and a banner page. (GFPR#RE12090010) 2. When specifying a tray other than the Auto Tray Select as the Input Tray and using Shift Collate or Rotate Collate, the documents are printed without being shifted. (GFPR#RE12110018, GFPR#RE12110039) 3. When a PCL5 job includes a raster image, the text and images might be placed in the wrong position, which would result in an unexpected printout. (GFPR#RE13020014, GFPR#RE13070008) 4. Specific TrueType fonts that include problematic hinting data might cause an SC899 error to occur. (GFPR#RA13030005)		

Reissued: 23-Mar-17

Model: AI-P2	Date: 28-Sep-12	No.: RM132008g
--------------	-----------------	----------------

Version	Modified Points or Symptom Corrected
1.02	1st Mass production

Reissued: 09-Apr-14

Model: AI-P2	Date: 28-Sep-12	No.: RM132009b
--------------	-----------------	----------------

RTB Reissue

The items in ***bold italics*** have been corrected.

Subject: Firmware Release Note: PDF		Prepared by: T. Hirakawa	
From: 2nd Tech Service Sect., MFP/Printer Tech Service Dept.			
Classification:	<input type="checkbox"/> Troubleshooting <input type="checkbox"/> Mechanical <input type="checkbox"/> Paper path <input type="checkbox"/> Product Safety	<input type="checkbox"/> Part information <input type="checkbox"/> Electrical <input type="checkbox"/> Transmit/receive <input checked="" type="checkbox"/> Other (Firmware)	<input type="checkbox"/> Action required <input type="checkbox"/> Service manual revision <input type="checkbox"/> Retrofit information <input checked="" type="checkbox"/> Tier 2

This RTB has been issued to announce the firmware release information for the **PDF**.

Version	Program No.	Effective Date	Availability of RFU
1.02	M1325734C	May 2014 production	Available
1.01	M1325734B	November 2013 production	Available
1.00	M1325734A	1st Mass production	Available

Note: Definition of Availability of RFU via @Remote
"Available" The firmware can be updated via RFU or SD card.

"Not available": The firmware can only be updated via SD card.

Version	Modified Points or Symptom Corrected
1.02	Symptom corrected: 1. PDF Direct jobs containing a mask that was created using tiling, will be reset. 2. Limitcheck error occurs when printing jobs that contain extremely small images that are difficult to draw.
1.01	Symptom corrected: Printing certain web pages from Safari or PDF created by iOS/Mac OS using AirPrint could cause the system to stall. PDF Direct jobs will be reset as following: <ul style="list-style-type: none"> - Jods created by specific Mac OS X application. - Jobs specified by huge graphic images as patterns. - Device might stall if available memory is less than 900 KB for printing.
1.00	1st Mass production

Model: AI-P2	Date: 28-Sep-12	No.: RM132010
---------------------	-----------------	---------------

Subject: Firmware Release Note: PS3		Prepared by: T. Hirakawa	
From: 1st Tech Service Sect., MFP/Printer Tech Service Dept			
Classification:	<input type="checkbox"/> Troubleshooting	<input type="checkbox"/> Part information	<input type="checkbox"/> Action required
	<input type="checkbox"/> Mechanical	<input type="checkbox"/> Electrical	<input type="checkbox"/> Service manual revision
	<input type="checkbox"/> Paper path	<input type="checkbox"/> Transmit/receive	<input type="checkbox"/> Retrofit information
	<input type="checkbox"/> Product Safety	<input checked="" type="checkbox"/> Other (Firmware)	<input checked="" type="checkbox"/> Tier 2

This RTB has been issued to announce the firmware release information for the **PS3**.

Version	Program No.	Effective Date	Availability of RFU
1.01	D6405765A	1st Mass production	Available

Note: Definition of Availability of RFU via @Remote

“Available” The firmware can be updated via RFU or SD card.

“Not available”: The firmware can only be updated via SD card.

Version	Modified Points or Symptom Corrected
1.01	1st Mass production

Reissued: 01-Nov-14

Model: AI-P2	Date: 28-Sep-12	No.: RM132012a
--------------	-----------------	----------------

RTB Reissue

The items in ***bold italics*** have been corrected or added.

Subject: Firmware Release Note: RPCS		Prepared by: T. Hirakawa	
From: 2nd Tech Service Sect., MFP/Printer Tech Service Dept			
Classification:	<input type="checkbox"/> Troubleshooting <input type="checkbox"/> Mechanical <input type="checkbox"/> Paper path <input type="checkbox"/> Product Safety	<input type="checkbox"/> Part information <input type="checkbox"/> Electrical <input type="checkbox"/> Transmit/receive <input checked="" type="checkbox"/> Other (Firmware)	<input type="checkbox"/> Action required <input type="checkbox"/> Service manual revision <input type="checkbox"/> Retrofit information <input checked="" type="checkbox"/> Tier 2

This RTB has been issued to announce the firmware release information for the **RPCS**.

Version	Program No.	Effective Date	Availability of RFU
3.12.27	<i>M1325764B</i>	<i>October 2014 production</i>	<i>Available</i>
3.12.26	M1325764A	1st Mass production	Available

Note: Definition of Availability of RFU via @Remote

“Available” The firmware can be updated via RFU or SD card.

“Not available”: The firmware can only be updated via SD card.

Version	Modified Points or Symptom Corrected
3.12.27	<i>Symptom corrected:</i> – <i>When printing certain documents in Microsoft Word, an SC899 error might occur.</i>
3.12.26	1st Mass production

Model: AI-P2	Date: 21-Nov-12	No.: RM132013
---------------------	-----------------	---------------

Subject: Firmware Release Note: Option IPDS		Prepared by: T. Hirakawa	
From: 1st Tech Service Sect., MFP/Printer Tech Service Dept			
Classification:	<input type="checkbox"/> Troubleshooting	<input type="checkbox"/> Part information	<input type="checkbox"/> Action required
	<input type="checkbox"/> Mechanical	<input type="checkbox"/> Electrical	<input type="checkbox"/> Service manual revision
	<input type="checkbox"/> Paper path	<input type="checkbox"/> Transmit/receive	<input type="checkbox"/> Retrofit information
	<input type="checkbox"/> Product Safety	<input checked="" type="checkbox"/> Other (Firmware)	<input checked="" type="checkbox"/> Tier 2

This RTB has been issued to announce the firmware release information for the **Option IPDS**.

Version	Program No.	Effective Date	Availability of RFU
8.563	D6405763	1st Mass production	Available

Note: Definition of Availability of RFU via @Remote

“Available” The firmware can be updated via RFU or SD card.

“Not available”: The firmware can only be updated via SD card.

Version	Modified Points or Symptom Corrected
8.563	1st Mass production. This firmware is dependent on Printer firmware v1.02 or later. Please be sure to update this as well.

Model: AI-P2	Date: 21-Nov-12	No.: RM132014
---------------------	-----------------	---------------

Subject: Firmware Release Note: Font EXP		Prepared by: T. Hirakawa	
From: 1st Tech Service Sect., MFP/Printer Tech Service Dept			
Classification:	<input type="checkbox"/> Troubleshooting	<input type="checkbox"/> Part information	<input type="checkbox"/> Action required
	<input type="checkbox"/> Mechanical	<input type="checkbox"/> Electrical	<input type="checkbox"/> Service manual revision
	<input type="checkbox"/> Paper path	<input type="checkbox"/> Transmit/receive	<input type="checkbox"/> Retrofit information
	<input type="checkbox"/> Product Safety	<input checked="" type="checkbox"/> Other (Firmware)	<input checked="" type="checkbox"/> Tier 2

This RTB has been issued to announce the firmware release information for the **Font EXP**.

Version	Program No.	Effective Date	Availability of RFU
1.00	D1295771	1st Mass production	Available

Note: Definition of Availability of RFU via @Remote

“Available” The firmware can be updated via RFU or SD card.

“Not available”: The firmware can only be updated via SD card.

Version	Modified Points or Symptom Corrected
1.00	1st Mass production

Model: AL-P2		Date: 25-Mar-13	No.: RM132015
Subject: SP5-749		Prepared by: T.Hirakawa	
From: 1st Tech Service Sect., MFP/P Tech Service Dept.			
Classification:	<input type="checkbox"/> Troubleshooting <input type="checkbox"/> Mechanical <input type="checkbox"/> Paper path <input type="checkbox"/> Product Safety	<input type="checkbox"/> Part information <input type="checkbox"/> Electrical <input type="checkbox"/> Transmit/receive <input type="checkbox"/> Other (Specification)	<input type="checkbox"/> Action required <input checked="" type="checkbox"/> Service manual revision <input type="checkbox"/> Retrofit information <input type="checkbox"/> Tier 2

Service Manual correction

The area highlighted ***in bold italic*** below was added to the Service Manual.

Appendix: Service Program Mode Tables (pg.510)

SP5-xxx: Mode

5749	Import/Export	
001	Import	<i>[- / - / -]</i> <i>Target: [System] [Printer] [Fax]</i> <i>[Scanner]</i> <i>Option: [Unique] [Secret]</i> <i>Crypt config: [Encryption]</i> <i>[Execute]</i>
101	Export	<i>[- / - / -]</i> <i>Option: [Unique]</i> <i>Crypt config: [Encryption]</i> <i>Encryption key (if selected)</i> <i>[Execute]</i>
251	Export Result Print (SP)	<i>[- / - / -]</i> <i>[Execute]</i>
252	Import Result Print (SP)	<i>[- / - / -]</i> <i>[Execute]</i>

Data that can be imported and exported

- Copier / Document Server Features
- Printer Features
- Scanner Features
- Facsimile Features
- Extended Feature Settings
- Program (Document Server)
- Program (Copier)
- Program (Scanner)
- Web Image Monitor Setting
- Web Service Settings
- System Settings

Model: AL-P2	Date: 25-Mar-13	No.: RM132015
--------------	-----------------	---------------

Data that cannot be imported or exported

- Address book
- Programs (fax function)
- Programs (printer function)
- Scanner function programs that include password settings
- User stamp in the copy default settings
- Settings for configuring from telnet
- @Remote-related data
- Counters
- EFI printer unit settings (At the time of EFI printer unit connection)
- Settings that can be specified using Web Image Monitor or Web Service only (such as Bonjour or SSDP settings)
- Some System Settings*1 *2

*1 The setting for the date, those settings that require the device certificate, and those settings that need to be adjusted for each device (for example, image adjustment settings) cannot be imported or exported.

*2 Settings only for executing functions and settings only for viewing cannot be imported or exported.

Import/export condition

Import/export is possible between devices only if their models, region of use, and the following device configuration match.

- Input Tray
- Output Tray
- Whether or not equipped with the duplex function
- Whether or not equipped with a finisher and the type of finisher
- ADF
- Whether or not equipped with a hard disk
- Whether or not equipped with the Remote Machine function

Location of stored data (log)

- The log is stored in the same location as the exported device setting information file.
- To use this function, it is necessary to create the device setting information file with special software and store it on the web server. For details, contact your sales representative.

Possible solutions for import/export problems

If an error occurs, check the log's result code first. Values other than 0 indicate that an error occurred. The result code will appear in the circled area illustrated below.

- Example of a log file

Model: AL-P2
Date: 25-Mar-13
No.: RM132015

```

"1.0.0"
"ExecType", "Date", "SerialNo", "PnP", "Model", "Destination", "IP", "Host", "Storage", "FileName",
"FileID", "TotalItem", "NumOfOkItem", "ResultCode", "ResultName", "Identifier"
"IMPORT"
"2012-07-05T15:29:16+09:00"
"3C35-7M0014"
"Brand Name"
"Product Name"
"0"
"10"
"10.250.155.125"
"RNP00267332582D"
"SD"
"201207051519563C35-710220.csv"
"201207051519563C35-710220"
" 0"
" 2"
"INVALID REQUEST"
"TargetID", "ModuleID", "PrefID", "Item", "NgCode", "NgName"
    
```

If you cannot solve the problem or do not know how to solve it after checking the code, note down the error log entry, and then contact your service representative.

Result Code	Cause	Solutions
2 (INVALID REQUEST)	A file import was attempted between different models or machines with different device configurations.	Import files exported from the same model with the same device configurations.
4 (INVALID OUTPUT DIR)	Failed to write the device information to the destination device.	Check whether the destination device is operating normally.
7 (MODULE ERROR)	An unexpected error occurred during import or export.	Switch the power off and then back on, and then try the operation again. If the error persists, contact your service representative.
8 (DISK FULL)	The available storage space on the external medium is insufficient.	Execute the operation again after making sure there is enough storage space.
9 (DEVICE ERROR)	Failed to write or read the log file.	Check whether the path to the folder for storing the file or the folder in which the file is stored is missing.
10 (LOG ERROR)	The hard disk is faulty.	Contact your service representative.
20 (PART FAILED)	Failed to import some settings.	The reason for the failure is logged in "NgCode". Check the code. ♦ Reason for the Error (Ng-Name) 2. INVALID VALUE The specified value exceeds the allowable range. 3. PERMISSION ERROR The permission to edit the setting is missing. 4. NOT EXIST The setting does not exist in the system. 5. INTERLOCK ERROR The setting cannot be changed because of the system status or interlocking with other specified settings. 6. OTHER ERROR The setting cannot be changed for some other reason.
21 (INVALID FILE)	Failed to import the file because it is in the wrong format in the external medium.	Check whether the file format is correct. The log is in the form of a CSV file
22 (INVALID KEY)	The encryption key is not valid.	Use the correct encryption key.

Model: AL-P2

Date: 25-Mar-13

No.: RM132015

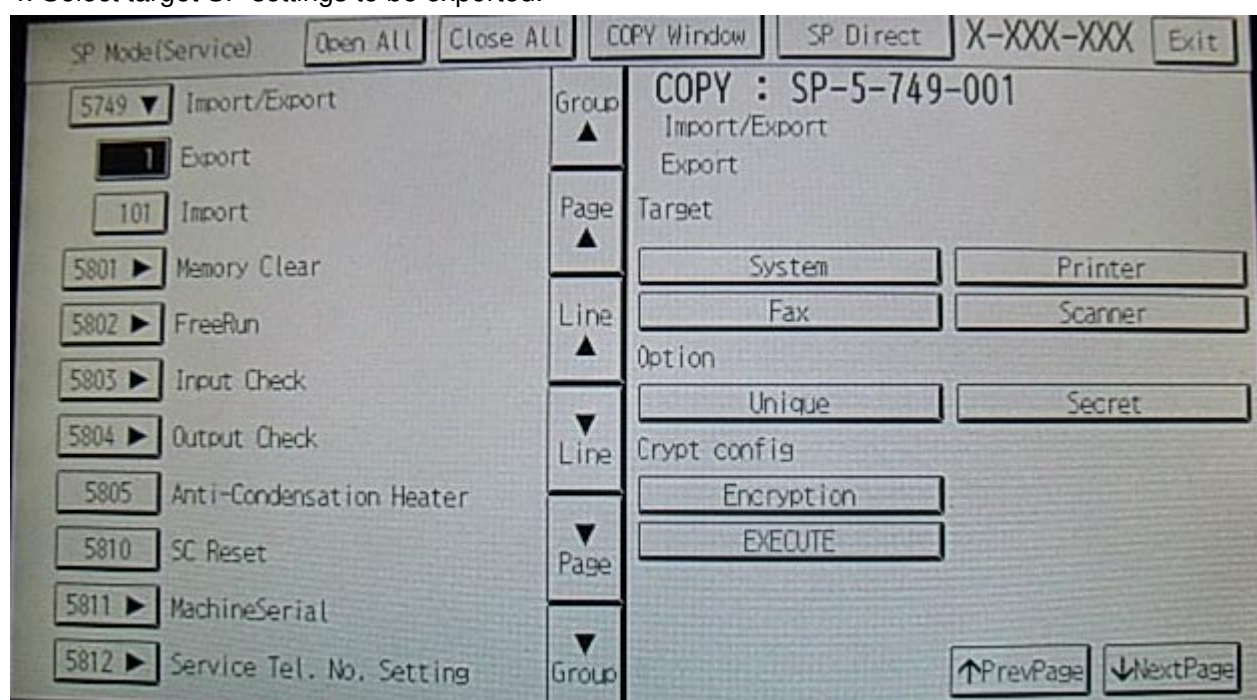
Note:

- When exporting device information from the control panel, the data can be saved only on an SD card.
- The file format for exports is CSV.

Exporting Device Information

When exporting SP device information from the control panel, the data is saved on an SD card.

1. Insert an SD card into the media slot on the side of the control panel.
2. Enter SP mode.
3. Press SP5-749-001
4. Select target SP settings to be exported.



Model: AL-P2
Date: 25-Mar-13
No.: RM132015

5. Select the option settings.

Item	Specification	Note
Unique	Unique information of the machine is included in exported file if you select "Unique" setting.	Unique information that can be updated #1. Items that are to be use to identify the machine itself among some devices. Example: IP address / Host name / Information related to FAX number /Mail address assigned the machine #2. Items for specifying the options equipped the machine. Example: Lot number for developer Unique information that cannot be updated #3. Items that the problem may occur by importing Example: Serial number / Information related to @remote #4. Items for managing the history of the machine Example: time and date / counter information / Installation date #5. Setting value for Engine
Secret	Secret information is exported if you select "Secret" setting.	Secret information #1. Data that absolutely cannot be exported. (Exported data becomes turned letter) Example: Password / Encryption key / PIN code #2. Confidential information for the customer Example: User name / User ID / Department code / Mail address / Phone number #3. Personal information Example: Document name / Image data #4. Sensitive information for the customer Example: IP address / MAC address / Network parameter

6. Select an encryption setting.

Encryption	Select whether perform the encryption function or not when exporting. If you push "Encryption" key, you can export secret information.	If the encryption function is used, setting of encryption key is required by direct input. - Type the arbitrary password using soft keyboard - Can enter up to 32 characters
------------	---	--

7. Press "Execute" key.

8. Press [OK].

Note:

- If data export fails, the details of the error can be viewed in the log.

Model: AL-P2

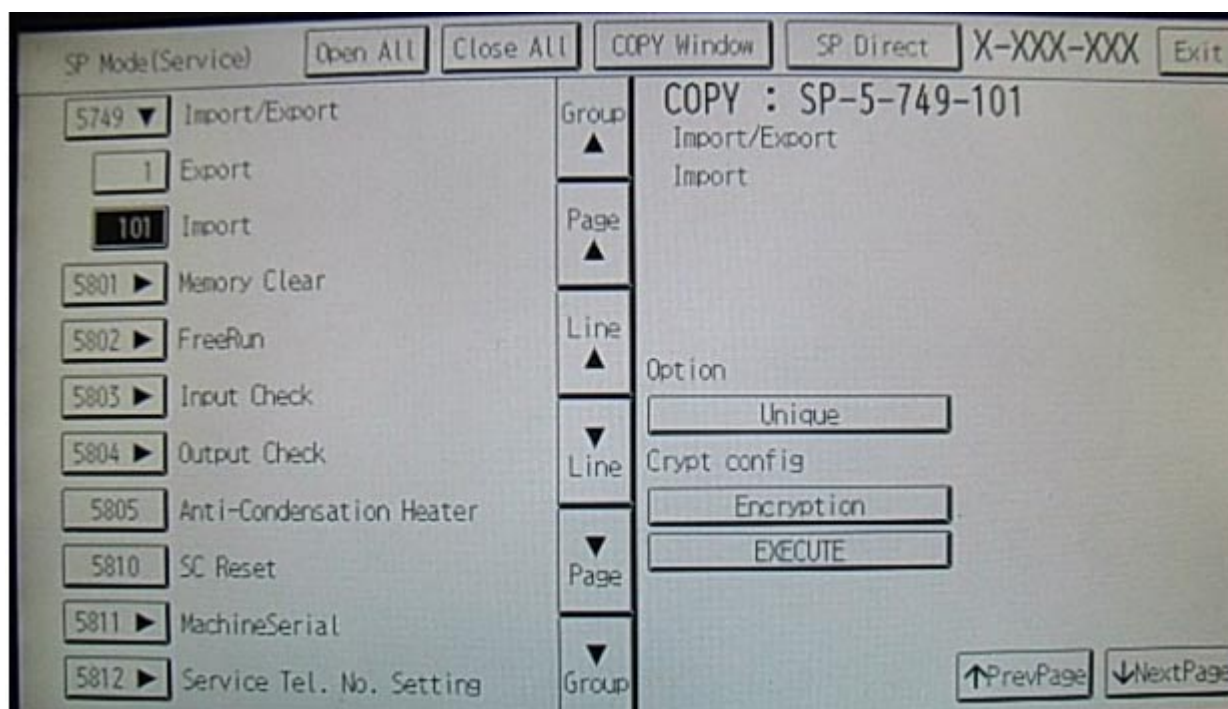
Date: 25-Mar-13

No.: RM132015

Importing Device Information

Import device information saved on an SD card.

1. Insert an SD card into the media slot on the side of the control panel.
2. Enter SP mode.
3. Press SP5-749-101



4. Select a unique setting.
5. Press "Encryption key", if the encryption key was created when the file was exported.

Unique	If you want to apply the unique information to the target machine, select the "Unique" key.	Refer to the above information
Encryption	If the encrypted fail is selected as import file, this setting is required.	

6. Press "Execute" key.
7. Press [OK].

Note:

- If data export fails, the details of the error can be viewed in the log.

Reissued:23-Jan-14

Model: AL-P2	Date: 07-May-13	No.: RM132016a
--------------	-----------------	----------------

RTB Reissue

The items in ***bold italics*** were corrected or added.

Subject: Service manual correction		Prepared by: T.Hirakawa	
From: 2st Tech Service Sect., MFP/P Tech Service Dept.			
Classification:	<input type="checkbox"/> Troubleshooting <input type="checkbox"/> Mechanical <input type="checkbox"/> Paper path <input type="checkbox"/> Product Safety	<input type="checkbox"/> Part information <input type="checkbox"/> Electrical <input type="checkbox"/> Transmit/receive <input type="checkbox"/> Other (Specification)	<input type="checkbox"/> Action required <input checked="" type="checkbox"/> Service manual revision <input type="checkbox"/> Retrofit information <input type="checkbox"/> Tier 2

Service Manual correction

The area highlighted ***in bold italic*** below was corrected.

3. Appendix: Service Program Mode Tables (pg.156)

Service Manual (pg.156)
Engine SP Tables-7

 SP7-xxx: Data Log

7952	PM Yield Setting	
	Sets the each yield of the following.	
001	PCD(Page)	[0 to 99999999/ <i>160000</i> / 1 sheet]
	Sets the PM yield of the PCD (Pages).	
002	Transfer(Page)	[0 to 99999999/ <i>160000</i> / 1 sheet]
	Sets the PM yield of the transfer unit (Pages).	
003	Fuser(Page)	[0 to 99999999/ <i>160000</i> / 1 sheet]
	Sets the PM yield of the fusing unit (Pages).	

Reissued: 17-Feb-15

Model: AL-P2	Date: 6-Nov-14	No.: RM132017a
--------------	----------------	----------------

RTB Reissue

Subject: Part Catalog Correction		Prepared by: Y.Saitoh	
From: 2nd Tech Service Sect., MFP/P Tech Service Dept.			
Classification:	<input type="checkbox"/> Troubleshooting <input type="checkbox"/> Mechanical <input type="checkbox"/> Paper path <input type="checkbox"/> Product Safety	<input type="checkbox"/> Part information <input type="checkbox"/> Electrical <input type="checkbox"/> Transmit/receive <input checked="" type="checkbox"/> Other ()	<input type="checkbox"/> Action required <input checked="" type="checkbox"/> Service manual revision <input type="checkbox"/> Retrofit information <input type="checkbox"/> Tier 2

Service Manual Revision

The description for SC672 was added.

Troubleshooting

pg. 357

SC672	B	Controller-to-operation panel communication error at startup	
		<p>After powering on the machine, communication between the controller and operation panel does not begin, or the communication is interrupted after a normal startup.</p>	<ul style="list-style-type: none"> • Controller stalled • Controller board installed incorrectly • Defective controller board • Operation panel connector loose or defective • Poor connection of DIMM and optional boards on the controller board <ol style="list-style-type: none"> 1. Turn the main power switch OFF/ON. 2. Check the connection of the harness that connects with the operational panel. 3. Check the connections of controller board. 4. Replace the controller board.

Model: AL-P2	Date: 27-Jan-15	No.: RM132018
--------------	-----------------	---------------

Subject: Parts change and addition information.		Prepared by: A.Ishida	
From: 2nd Tech Service Sect., MFP/P Tech Service Dept.			
Classification:	<input type="checkbox"/> Troubleshooting <input type="checkbox"/> Mechanical <input type="checkbox"/> Paper path <input type="checkbox"/> Product Safety	<input checked="" type="checkbox"/> Part information <input type="checkbox"/> Electrical <input type="checkbox"/> Transmit/receive <input type="checkbox"/> Other ()	<input type="checkbox"/> Action required <input type="checkbox"/> Service manual revision <input type="checkbox"/> Retrofit information <input type="checkbox"/> Tier 2

Change/Reason: To prevent the cleaning web from coming loose, the following parts are changed or newly added to the fusing unit.

[1] The addition of a variable brake to the cleaning web.

[2] Changed the one-way clutch method on the holder roller to ratchet method.

Old part number	New part number	Description	Q'ty	Int	Page	Index	Set	Note
D1294305	D1294304	CLEANING UNIT:ASS'Y	1	X/O	76	*		
AE040099	AE040100	ROLLER: PLATE	1	X/X	76	9	B	
-	D1294331	FLAT NUT:BRAKE	1		76	24**	A	Please refer to [A] for [1]
-	D1294332	BRAKE:WEB	1		76	25**	A	Please refer to [B] for [1]
D0094355	-	ROLLER CLUTCH			76	8		Deleted, please refer to [C]
-	D1294359	BUSHING: ROLLER:PLATE: FRONT	2	X/X	76	26**	B	Please refer to [D] for [2]
-	B0654211	PRESSURE ROLLER GEAR	1		76	27**	B	Please refer to [E] for [2]
-	B1404209	BRACKET: STOPPER:ASS'Y	1		76	28**	B	Please refer to [F] for [2]
-	D1294309	BRAKE:WEB:ASS'Y	1		76	29**		
-	D0094321	STAY:UPPER	1		76	30**		

• Part number of the Fusing Unit does not change.

** : New Index

Model: AL-P2

Date: 27-Jan-15

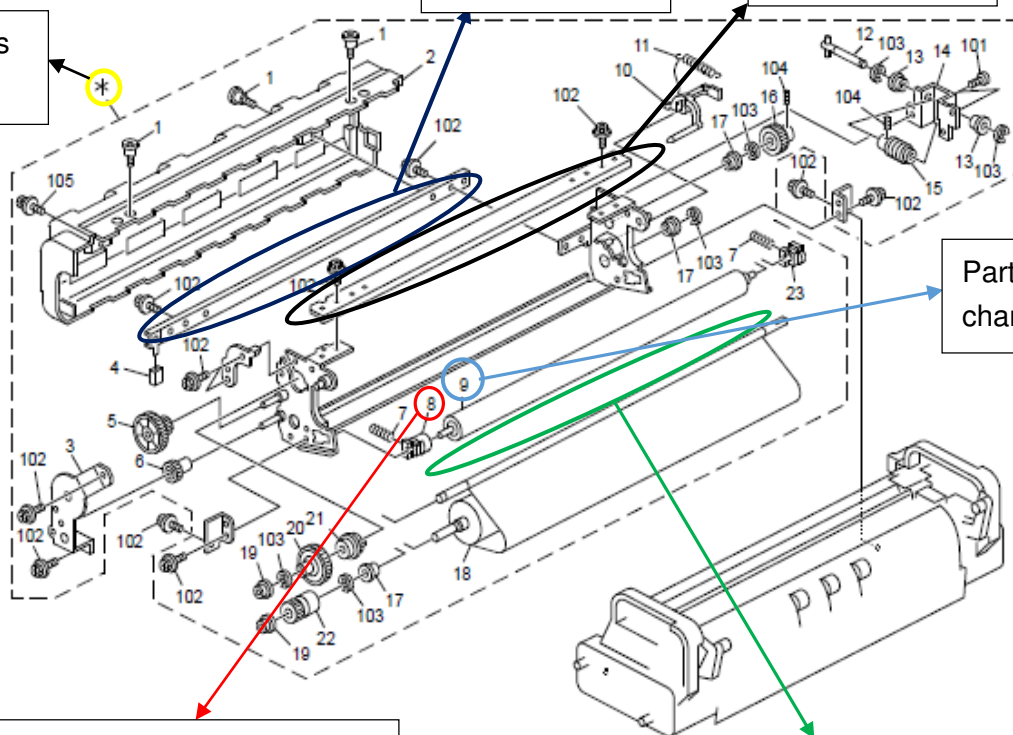
No.: RM132018

33.Fusing Unit 3 (D129/D130)

Part number is changed

29** is added.

30** is added.



Part number is changed

This is deleted.
Instead, 26** and 27** and
28** are added for [2].

24** and 25** are added
for [1].

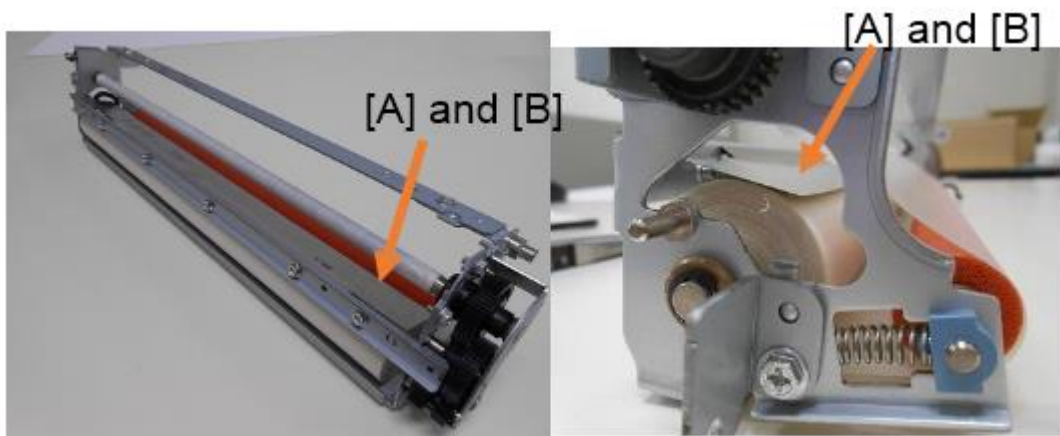
Model: AL-P2

Date: 27-Jan-15

No.: RM132018

[1] Variable brake

[A] and [B] are the variable brake.

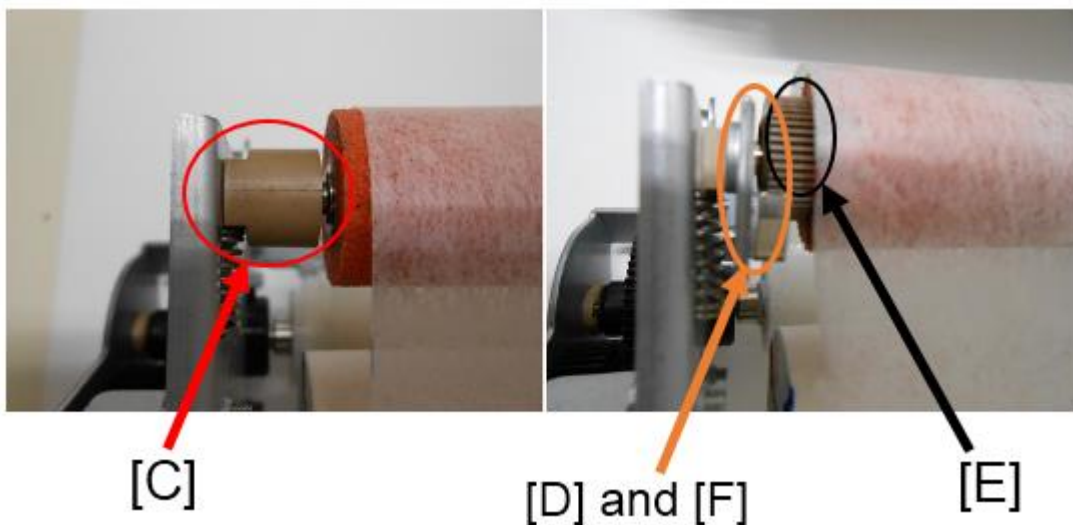

[2]: One way clutch method

One-way clutch method is before.

One-way clutch method

Ratchet method is after.

Ratchet method


Action to take on MIF:

Please install a new cleaning unit (p/n: D1294304) when a cleaning web issue occurs, because individual parts are not compatible due to modification of a frame on the fusing unit. After that, individual parts can be replaced.

Model: AL-P2

Date: 27-Jan-15

No.: RM132018

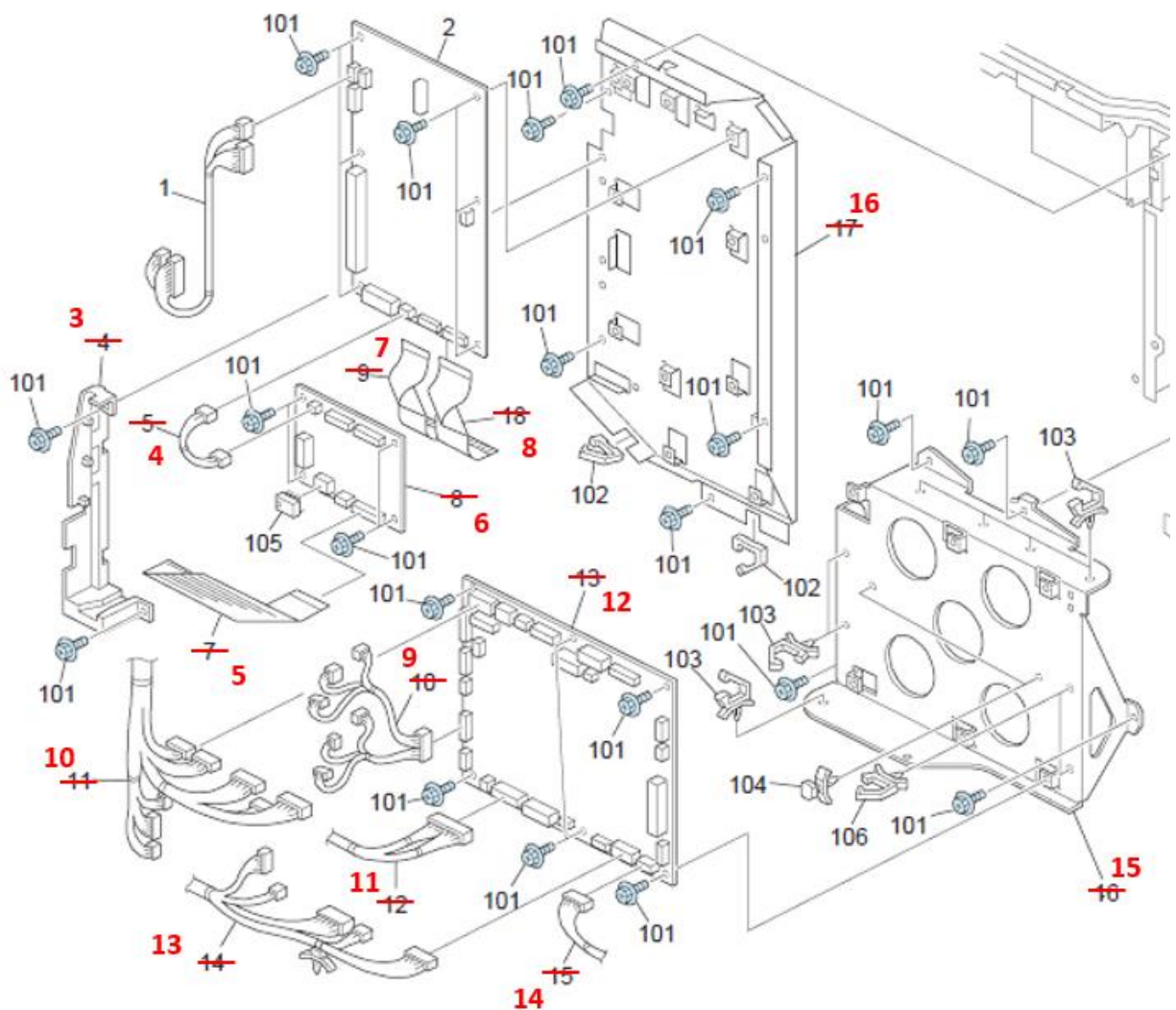
RAI (China) Production

Name	Destination	Product Code	Serial #
Aficio MP 4002	Asia	D129-29	W524M140023~
Gestetner MP 4002			
Lanier MP 4002			
Aficio MP 4002	Taiwan	D129-19	W524M100001~
Gestetner MP 4002			
Aficio MP 4002	China	D129-21	W523MC10116~
Gestetner: DSm940		D129-25	W524M120001~
Aficio MP 4002SP	Asia	D129-69	W523MC50142~
Gestetner MP 4002SP			
Lanier MP 4002SP			
Aficio MP 4002SP	Taiwan	D129-59	W524M100010~
Gestetner MP 4002SP			
Aficio MP 4002SP	China	D129-61	W523MC30203~
Aficio MP 5002	Asia	D130-29	W534M140007~
Gestetner MP 5002			
Lanier MP 5002			
Aficio MP 5002	Taiwan	D130-19	W534M100001~
Gestetner MP 5002			
Aficio MP 5002	China	D130-21	W533MC10011~
Aficio MP 5002SP	Asia	D130-69	W534M150001~
Gestetner MP 5002SP			
Lanier MP 5002SP			
Aficio MP 5002SP	Taiwan	D130-59	W534M100002~
Gestetner MP 5002SP			
Aficio MP 5002SP	China	D130-61	W533MC70061~
Ricoh: Aficio MP 5002	NA	D130-91	W533MC22811~
Savin: MP 5002			
Lanier: MP 5002			
Ricoh: Aficio SP 8300DN	NA	M132-17	T424M110004~
Ricoh: Aficio SP 8300DN	EU/Asia	M132-27	T424M130006~
Lanier:SP 8300DN			

Model: AI-P2		Date: 13-Jul-15	No.: RM132020
Subject: Parts Catalog Correction (Electrical Section 4)		Prepared by: Y.Taniguchi	
From: 1st Tech Service Sect., MFP/P Tech Service Dept.			
Classification:	<input type="checkbox"/> Troubleshooting <input type="checkbox"/> Mechanical <input type="checkbox"/> Paper path <input type="checkbox"/> Product Safety	<input checked="" type="checkbox"/> Part information <input type="checkbox"/> Electrical <input type="checkbox"/> Transmit/receive <input type="checkbox"/> Other ()	<input type="checkbox"/> Action required <input type="checkbox"/> Service manual revision <input type="checkbox"/> Retrofit information <input type="checkbox"/> Tier 2

The index numbers in Electrical Section 4 (page.61) were corrected as follows.

31. Electrical Section 4 (M132)



Reissued: 21-Dec-15

Model: AL-P2	Date: 2-Nov-15	No.: RM132021a
--------------	----------------	----------------

RTB Reissue

The items in ***bold italics*** were corrected or added.

Subject: Manual correction - Caution note on PSU replacement		Prepared by: Y Saitoh	
From: 1st MFP Tech Service Sec., MFP Tech Service Dept.			
Classification:	<input type="checkbox"/> Troubleshooting <input type="checkbox"/> Mechanical <input type="checkbox"/> Paper path <input checked="" type="checkbox"/> Product Safety	<input type="checkbox"/> Part information <input type="checkbox"/> Electrical <input type="checkbox"/> Transmit/receive <input type="checkbox"/> Other ()	<input type="checkbox"/> Action required <input checked="" type="checkbox"/> Service manual revision <input type="checkbox"/> Retrofit information <input checked="" type="checkbox"/> Tier 2

Please add the following caution note in the field service manual in this section:

[Replacement and Adjustment > Electrical Components > PSU](#)

Parts number	Parts description	Product code
AZ240204	POWER SUPPLY UNIT:353W:NA/TWN	<i>M132</i>
AZ240236	POWER SUPPLY UNIT:353W:EU/AA/CHN	<i>M132</i>

Reissued: 21-Dec-15

Model: AL-P2	Date: 2-Nov-15	No.: RM132021a
--------------	----------------	----------------

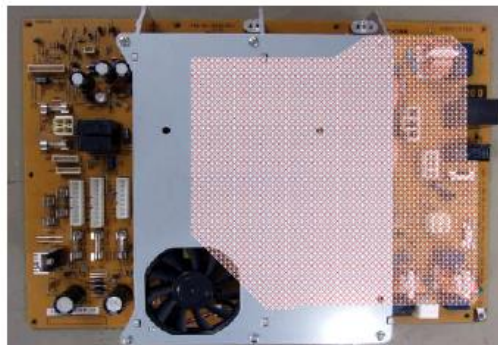
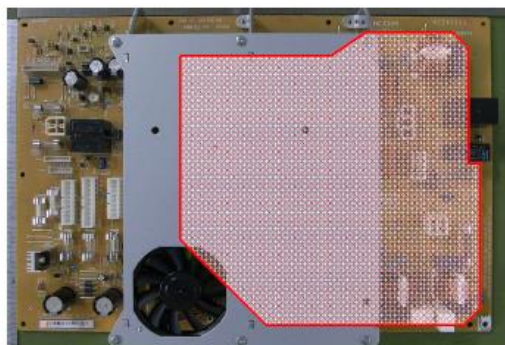
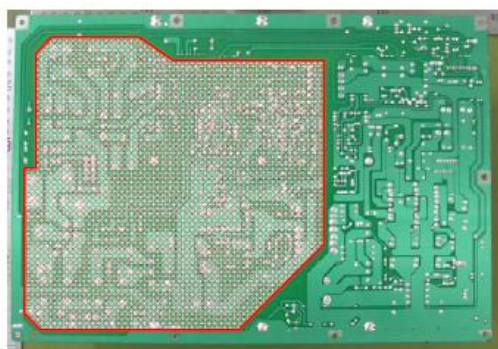
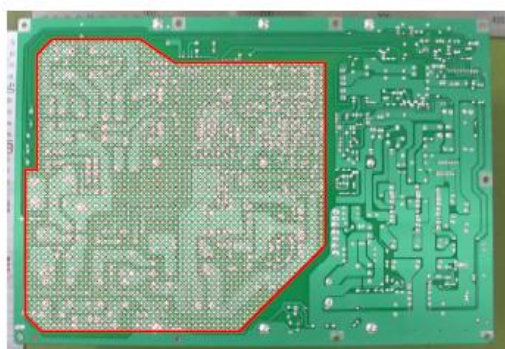
⚠ CAUTION:

NEVER touch the areas outlined in red in the photos below to prevent electric shock caused by residual charge.

Residual charge of about 100V-400V remains on the PSU board for several months even when the board has been removed from the machine after turning off the machine power and unplugging the power cord.

Alex-C2 100V DOM/NA PSU

Alex-C2 200V EU PSU



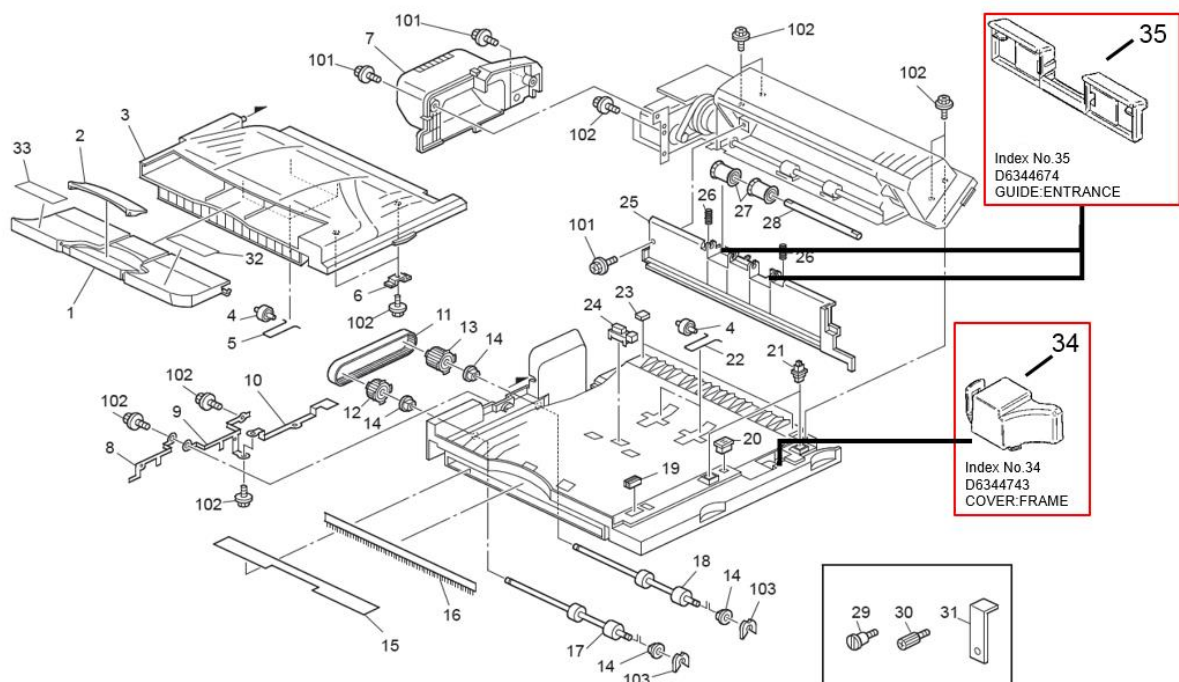
The areas outlined in red on the bracket show where the residual charge of about 100V-400V remains on the PSU board under the bracket.

Model: AL-P2		Date: 4-Aug-16	No.: RM132022
Subject: Part catalog correction – Bridge unit Cover, Guide		Prepared by: Y.Miyamoto	
From: 1st Tech Service Sect., MFP/P Tech Service Dept.			
Classification:	<input type="checkbox"/> Troubleshooting <input type="checkbox"/> Mechanical <input type="checkbox"/> Paper path <input type="checkbox"/> Product Safety	<input checked="" type="checkbox"/> Part information <input type="checkbox"/> Electrical <input type="checkbox"/> Transmit/receive <input type="checkbox"/> Other ()	<input type="checkbox"/> Action required <input type="checkbox"/> Service manual revision <input type="checkbox"/> Retrofit information <input type="checkbox"/> Tier 2

Change: Illustrations of the following parts were added to the parts catalog.

Part number	Description	Q'ty	Page	Index	Note
D6344743	COVER:FRAME	1	3	34	
D6344674	GUIDE:ENTRANCE	1	3	35	

1.BRIDGE UNIT 1 (D634)



Model: AL-P2		Date: 29-Jun -17	No.: RM132023
Subject: Part information		Prepared by: Takuya Hirakawa	
From: 1st Tech Service Sect., MFP/P Tech Service Dept.			
Classification:	<input type="checkbox"/> Troubleshooting <input type="checkbox"/> Mechanical <input type="checkbox"/> Paper path <input type="checkbox"/> Other ()	<input checked="" type="checkbox"/> Part information <input type="checkbox"/> Electrical <input type="checkbox"/> Transmit/receive	<input type="checkbox"/> Action required <input type="checkbox"/> Service manual revision <input type="checkbox"/> Retrofit information

Old part number	New part number	Description	Q'ty	Int	Note
-	D0911361	DUCT:RIGHT REAR SIDEWAYS:ALEX:ASS'Y	1		-
-	D0911362	DUCT:REAR:ALEX:ASS'Y	1		-

Change: Deodorizing filters were newly added as service parts for the AL-C1/AL-C1.5/AL-C2/AL-P1/AL-P2.

Reason: To meet the requests of customers who may report strange odors on these models.

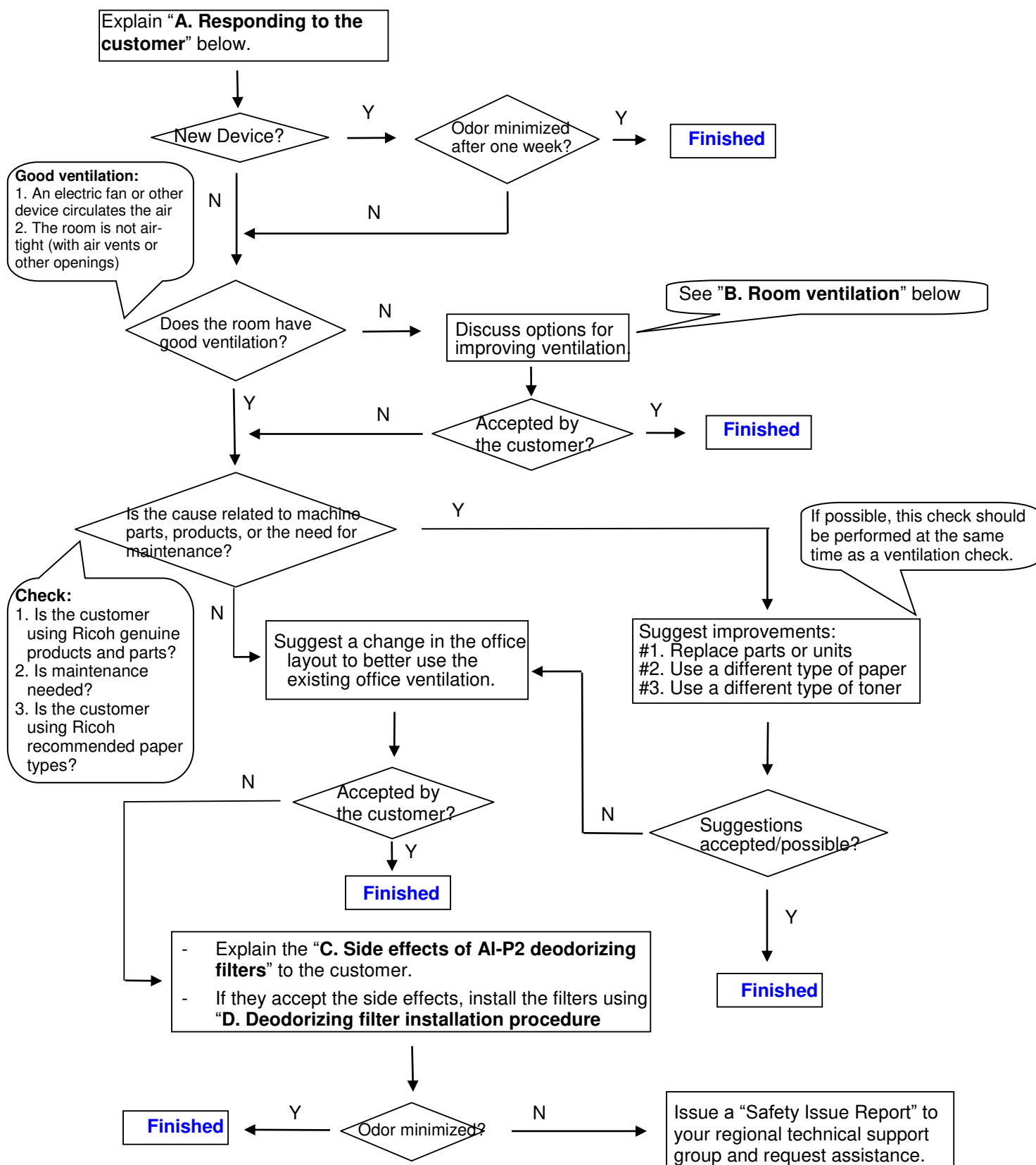
Note:

- In certain installation environments, some customers may have a relatively high sensitivity (low tolerance) to odors.
- The installation procedure and limitations of these filters are included below, as part of the **ACTION IN THE FIELD**.

ACTION IN THE FIELD

If a customer reports a strange odor on the machine, use the **flowchart below** to take the appropriate action.

Flowchart

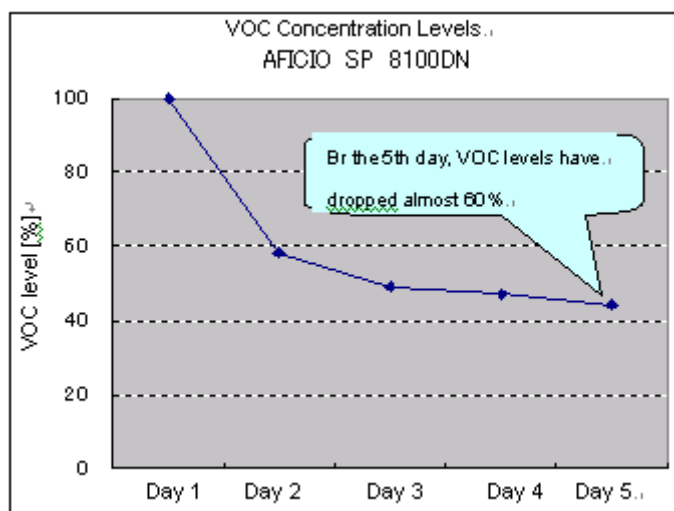


Action referenced in the Flowchart above:

A. Responding to the Customer

1. The first step in handling an inquiry about Ricoh device odor is to explain the following to the customer:
 - Ricoh takes our customers' health and the health of our planet very seriously. This is highlighted by the fact that Ricoh products receive the German "Blue Angel" and Japanese "Eco Mark" certifications. This level of dedication is standard at Ricoh.
 - This means that a properly used and maintained Ricoh product should never be the source of problems in the office environment, including those related to employee health. However, keeping the device in a small, improperly ventilated space or sitting directly in the path of the exhaust fumes has been reported to cause unpleasant odors, head and throat pain, and general discomfort. Therefore, we strongly urge customers to make sure that their devices are placed in areas with proper ventilation, and that the exhaust is pointed safely away from anyone sitting nearby. Ideally, this should be done during initial installation, but working with existing customers to improve the quality of their office environment should be done whenever possible.
 - However, brand new devices have a particularly strong odor that might worry some customers. This odor is significantly reduced by the end of the **first week of use**, so please ask for the customer's patience. See Figure 1 below for an example using the Aficio SP 8100DN.
 - Volatile Organic Compounds (VOC) are particles of the component materials (glues, plastics, chemicals, etc.) that Ricoh devices are built with. VOC are the primary source of the odors produced by Ricoh devices, so tracking VOC levels produced by Ricoh devices is a good indicator of the strength of the odors. Figure 1 shows the VOC levels of a brand new Aficio SP 8100DN during the first 5 days of use. As the graph shows, the amount of VOC has dropped by almost 60%.

Fig. 1



*1: Measurement was performed using a ppbRAE3000 from RAE Systems.

*2: "VOC Level (%)" shows the VOC level on a given day as a percentage of the first day's level. Mathematically, this is expressed as [Level detected on a given day] / [First day's level]

2. After the customer understands the above, work with the customer to ensure that there is enough ventilation and that the Ricoh devices are installed in a safe and proper manner.

Model: AL-P2

Date: 29-Jun -17

No.: RM132023

B. Room ventilation

While Ricoh devices are certified as safe, ventilation in some offices can allow even the safe levels of *VOC produced by Ricoh devices to build to levels that produce strong odors and health effects. In such cases, it is necessary to improve the ventilation of the immediate environment in which the Ricoh device is installed, in order to reduce particle concentration levels.

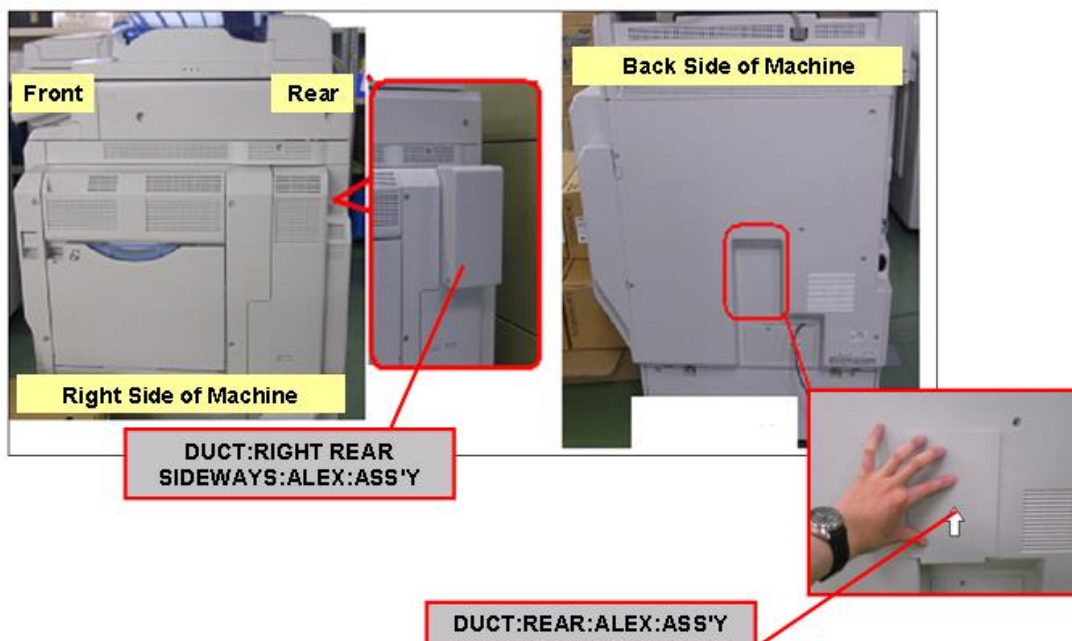
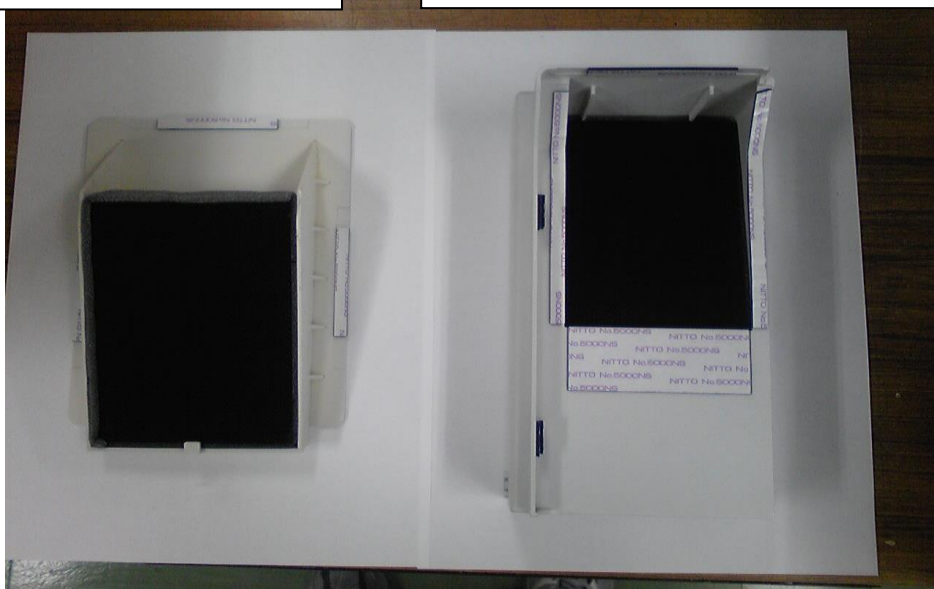
*VOC: Volatile Organic Compounds are particles of the component materials (glues, plastics, chemicals, etc.) that Ricoh devices are built with.

C. Deodorizing filter installation procedure

Locations of rear filter and fusing exhaust filter:

DUCT:REAR:ALEX:ASS'Y

DUCT:RIGHT REAR SIDEWAYS:ALEX:ASS'Y



Model: AL-P2

Date: 29-Jun -17

No.: RM132023

Attaching the rear filter:

1. Clean the exterior cover around the rear exhaust area using a cloth.
Important: Make sure to thoroughly clean the contact area for the double-sided tape.



2. Attach the rear deodorizing filter as shown in the photo below.



Model: AL-P2

Date: 29-Jun -17

No.: RM132023

Attaching the fusing exhaust deodorizing filter:

3. Clean the exterior cover around the fusing exhaust area using a cloth.
Important: Make sure to thoroughly clean the contact area for the double-sided tape.



4. Attach the fusing exhaust deodorizing filter as shown in the photo below.



Model: AL-P2

Date: 29-Jun -17

No.: RM132023

D. Limitations of the deodorizing filters

The following limitations exist with these filters:

If the temperature of the installation environment is **29C (84.2F) or higher:**

- Continuous printing/copying should be limited to a maximum of 38 minutes
- The Auto Off Timer should be set to its default value (60 minutes)

This is because when the temperature is this high, the properties and behavior of the toner change, and image quality issues begin to occur.

Model: Alex-P2

Date: 28-Feb-19

No.: RM132024

Subject: Point to Point correction

Prepared by: Takahiro Tada

From: 1st Tech. Support Sec. Service Support Dept.

Classification:

☐ Troubleshooting

☒ Part information

☐ Action required

☐ Mechanical

☐ Electrical

☐ Service manual revision

☐ Paper path

☐ Transmit/receive

☐ Retrofit information

☐ Product Safety

☐ Other ()

☐ Tier 2

Point to Point Revision

The part number (D5375370) of the Tray Heater's harness is old.
The correct part number is D7465370 shown in the figure below.

