

# Notes for Users

## Attaching the Control Panel Seal

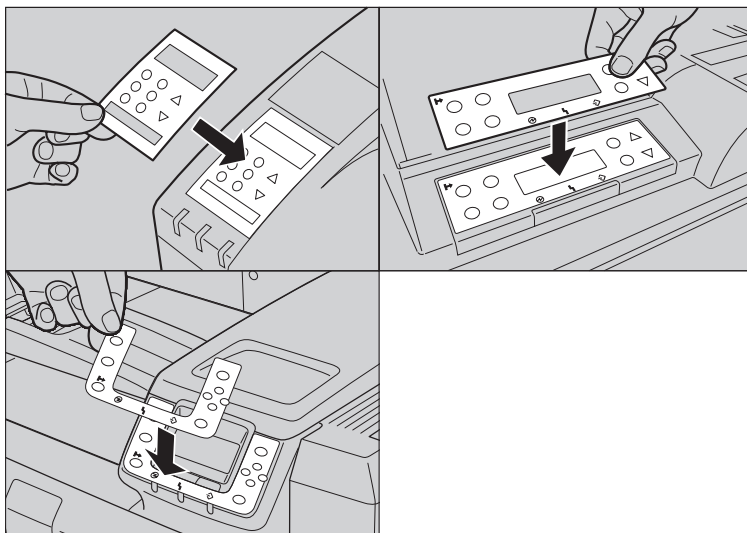
### Note

- ☐ The following procedures and illustrations may differ slightly depending on machine model.

**1** Peel off the transparent protective film stuck to the control panel seal on the machine.

### Note


- ☐ Do not peel the control panel seal away from the machine body.



BHB001

**2** Peel the back off the control panel seal.

**3** Match the holes of the control panel seal to the display and buttons of the control panel, and then stick the seal on the control panel using your fingers.

Copyright © 2007  
Printed in France  
GB  G179-7546



G1797546