

# Paper Feed Unit TK2010

(Code: M456)

For Machine Code: M187

## INSTALLATION GUIDE

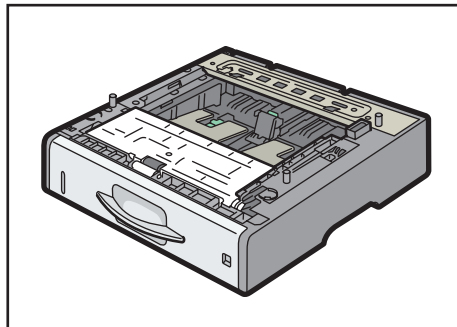
### ⚠ CAUTION:

- The machine weighs approximately 22.5 kg (49.6 lb.).  
When moving the machine, use the inset grips on both sides, and lift slowly in pairs. The machine will break or cause injury if dropped.
- Lifting the paper feed unit carelessly or dropping may cause injury.
- It is dangerous to handle the plug with wet hands. Doing this may result in receiving an electric shock.
- Before moving the machine, unplug the power cord from the wall outlet. If the cord is unplugged abruptly, it could become damaged. Damaged plugs or cords can cause an electrical or fire hazard.

### ★ Important

- To attach two or three paper feed units at the same time, first stack them one upon the other, and then attach them as a single unit.
- Do not place the machine directly on the floor.
- Do not slide more than one paper tray out at the same time. Having more than one paper tray filled with paper in a fully extended could cause the machine to topple.

### 1 Check the contents of the package.

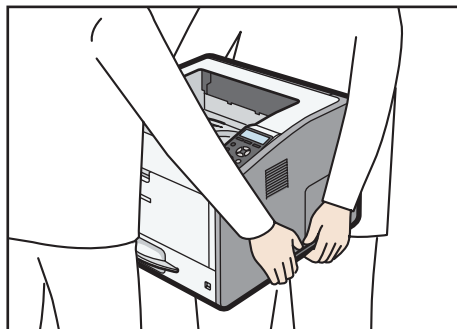


DBP001

### 2 Turn the machine off and unplug the power cord.

### 3 Remove the packaging from the paper feed unit.

### 4 Lift the machine using the inset grips on both sides of the machine.

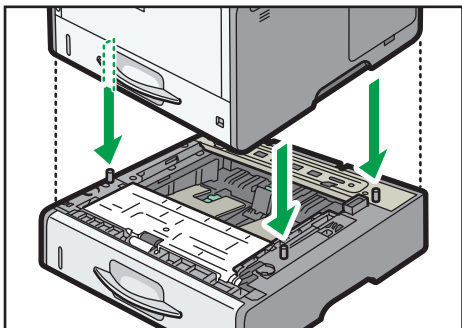


DBP003

When moving the machine, do not hold on the following parts as doing so could cause a malfunction:

- The handle onto the standard paper feed tray.

- 5** There are three upright pins on the optional paper feed unit. Align them with the holes on the underside of the machine, and then carefully lower the machine.



DBP002

- 6** Plug in the power cord, and then turn on the machine.
- 7** Print the configuration page to confirm that the unit was attached correctly.

**Note**

- To confirm whether the optional paper feed unit was correctly attached, print the configuration page, and check "Attached Equipment" on the configuration page. If the unit was attached correctly, "Tray 2", "Tray 3", and "Tray 4" will appear.
- For more information about printing the configuration page, see the manuals supplied with this machine.
- If the optional paper feed unit was not installed properly, repeat the procedure from the beginning. If it cannot be installed correctly even after reattempting installation, contact your sales or service representative.
- To use the paper feed unit, configure the printer options in "Accessories" in the printer driver. For details about opening "Accessories", see "Configuring Option Settings for the Printer", Driver Installation Guide.

