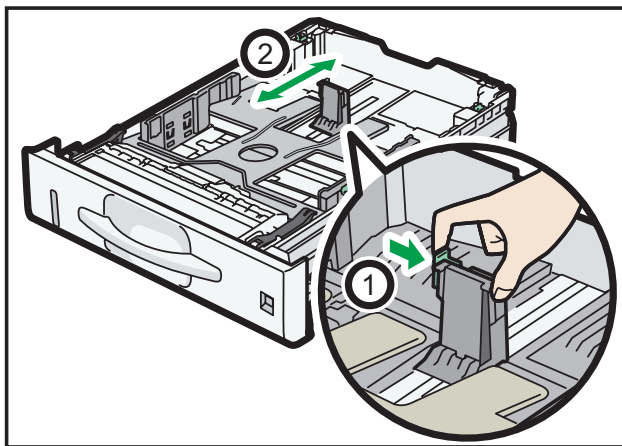


Notes for Users

Before loading paper into the paper tray, adjust the end guide to the paper size by following the procedure described below. You also need to adjust the paper size dial accordingly. For details, see the manual of the machine.

While pinching the clip on the end guide, adjust the guide to the size of the paper being loaded.



Note

Align the triangular protrusion on the end guide with the groove of the paper size to use, and then load the paper.

