

Quick Installation Guide



1 Where to Put the Printer

The printer's location should be carefully chosen because environmental conditions greatly affect its performance.

⚠ Warning

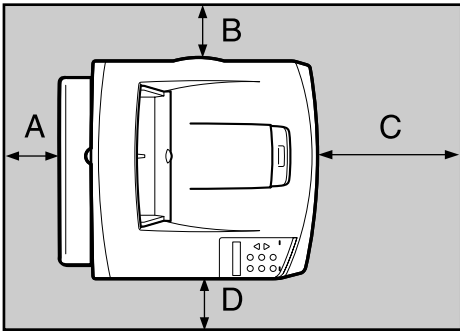
- Confirm that the wall outlet is near the machine and freely accessible, so that in event of an emergency, it can be unplugged easily.
- Only connect the machine to the power source described on this manual.
- Avoid multi-wiring.
- Plug and unplug the power cable with dry hands, or an electric shock could occur.
- Do not damage, break or make any modifications to the power cord. Do not place heavy objects on it, pull it hard or bend it more than necessary. These actions could cause an electric shock or fire.
- To avoid possible build-up of ozone, locate this machine in a large well ventilated room that has an air turnover of more than 30 m³/hr/person.
- The supplied power cord is for use with this equipment only. Do not use with other appliances. Doing so may result in fire, electric shock, or injury.

⚠ Caution

- Do not handle the power cord or plug with wet hands. Doing so might cause an electrical shock.
- Keep the machine in an area that is within optimum environmental conditions. Operating the machine in an environment that is outside the recommended ranges of humidity and temperature can cause an electrical fire hazard. Keep the area around the socket free of dust. Accumulated dust can become an electrical fire hazard.
- Place the machine on a strong and level surface. Otherwise, it might fall and injure someone.
- If you use the machine in a confined space, ensure there is continuous air circulation.

❖ Space Required for Installation

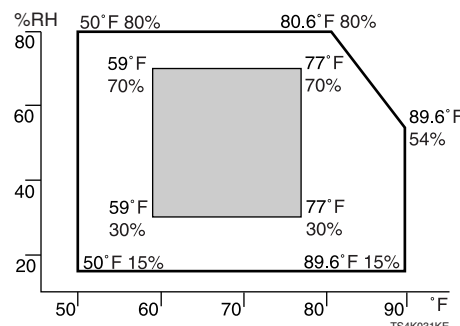
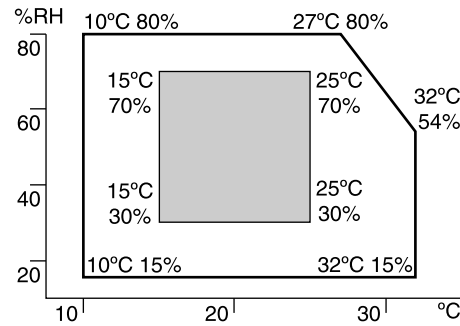
Leave enough space around the printer. This space is necessary to operate the printer. The recommended (or minimum) space requirements are as follows:



- A : more than 10 cm (4.0")
B : more than 10 cm (4.0")
C : more than 40 cm (15.8")
D : more than 10 cm (4.0")

❖ Optimum Environmental Conditions

Permissible and recommended temperature and humidity ranges are as follows:



- White area: Permissible Range
- Gray area: Recommended Range

⬇ Note

- The machine must be level within 5 mm, 0.2" from both front to rear and left to right.
- When you use this machine for a long time in a confined space without good ventilation, you may detect an odd smell. To keep the workplace comfortable, we recommend you keep it well ventilated.

❖ Environments to Avoid

★ Important

- Areas exposed to direct sunlight or strong light
- Dusty areas
- Areas with corrosive gases
- Areas that are excessively cold, hot, or humid
- Locations near air conditioners or humidifiers
- Locations near other electronic equipment
- Locations subject to frequent strong vibration

❖ Power Source

Connect the power cable to a power source of the following specification:

- 220 - 240 V, 50/60 Hz, 4.3 A or more

2 Unpacking the Printer and Checking the Contents of the Box

Follow the procedure below to verify the items that come with the printer.

⚠ Caution

- When lifting the machine, use the inset grips on both side and then lift the printer slowly. Lifting it carelessly or dropping it may cause an injury. The printer could break or cause an injury if dropped.

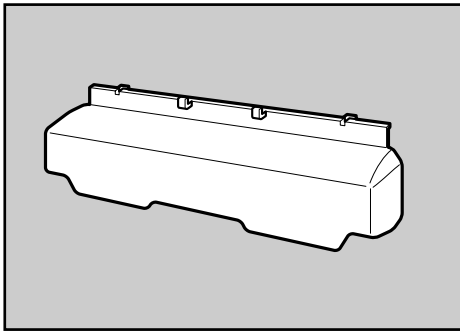
★ Important

- The interface cable is not supplied in the box. It is your responsibility to provide the interface cable appropriate for the computer that you are using.

1 Ensure that the box contains all items listed below. If there are any missing or defective items, contact your sales representative.

❖ Manuals and CD-ROMs

- ☒ Quick Installation Guide (this sheet)
- ☐ Safety Information
- ☐ CD-ROM "Printer Drivers and Utilities"
- ☐ CD-ROM "Manuals"
- ☐ CD-ROM "Document Management Utility"
- ☐ Power Cable
- ☐ Paper Tray Cover



- ☐ Ferrite Core x 1

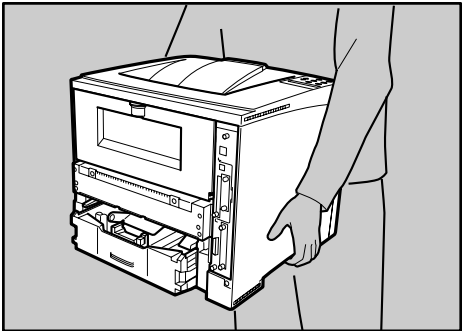


- ☐ Additional Documentation

⬇ Note

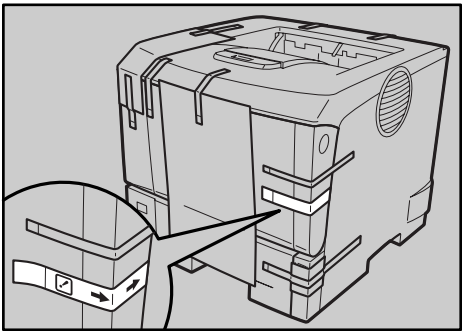
- This package does not include an interface cable. Purchase one to use with your host computer. See "Appendix", Hardware Guide.

2 Remove the plastic bag. Lift the printer and move it to the place where you want to install it.



3 Remove the orange adhesive tape.

Do not remove the tape shown in the illustration. Remove this tape when the toner cartridge is installed.



★ Important

- Lower the machine slowly and carefully to prevent trapping your hands.

3 Installing the Toner Cartridge

The following procedure describes how to install the toner cartridge.

⚠ Warning

- Do not incinerate spilled toner or used toner. Toner dust is flammable and might ignite when exposed to an open flame.
- Disposal should take place at an authorized dealer or an appropriate collection site.
- If you dispose of the used toner cartridges yourself, dispose of them according to local regulations.
- Do not store toner, used toner, or toner containers in a place with an open flame. The toner might ignite and cause burns or a fire.

⚠ Caution

- Keep toner (used or unused) and toner containers out of reach of children.
- If toner or used toner is inhaled, gargle with plenty of water and move into a fresh air environment. Consult a doctor if necessary.
- If your skin comes into contact with toner or used toner, wash the affected area thoroughly with soap and water.
- If toner or used toner gets into your eyes, flush immediately with large amounts of water. Consult a doctor if necessary.
- If toner or used toner is swallowed, dilute by drinking a large amount of water. Consult a doctor if necessary.
- Avoid getting toner on your clothes or skin when removing a paper jam or replacing toner. If your skin comes into contact with toner, wash the affected area thoroughly with soap and water.
- If toner gets on your clothing, wash with cold water. Hot water will set the toner into the fabric and may make removing the stain impossible.
- Our products are engineered to meet the highest standards of quality and functionality. When purchasing expendable supplies, we recommend using only those provided by an authorized dealer.

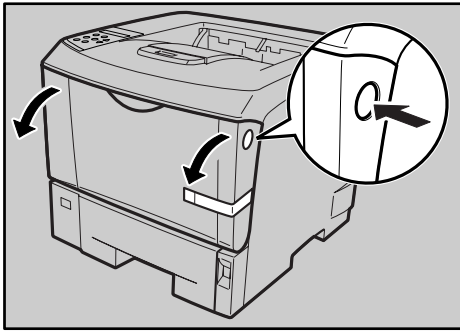
★ Important

- Do not expose the toner cartridge to a light for a long time. If you do, the toner cartridge will be damaged and the print quality might be reduced.

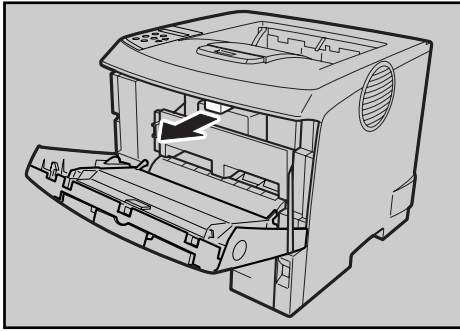
⬇ Note

- The toner cartridge that comes with the printer will allow you to print up to about 6,000 pages. But the actual number of pages will vary depending on the paper type, size, contents, and settings.
- Toner Cartridge (consumable) is not covered by warranty. However, if there is a problem, contact the dealer where you purchased the printer.
- Toner cartridge mouths may become dirty during quality inspection.

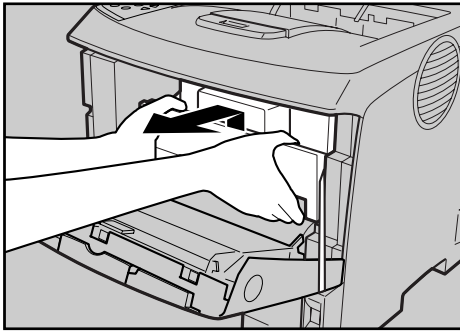
1 Open the front cover by pushing the front cover release button.



2 Remove the fixing material inserted between toner cartridge and the printer.



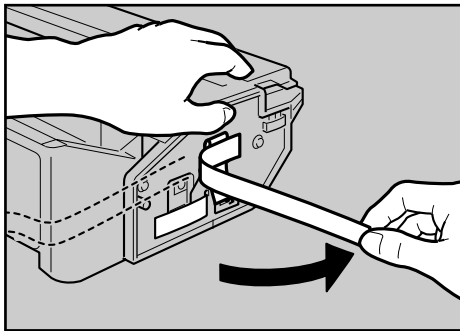
3 Lift the front side of the toner cartridge, and then pull it out of the printer.



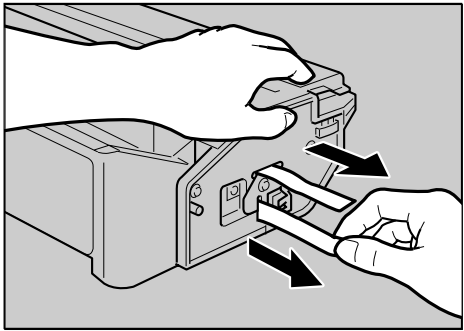
⬇ Note

- Do not hold the toner cartridge upside down or stand it vertically.
- Do not put the toner cartridge on an unstable or tilted surface.

4 Place the toner cartridge on at a flat surface. Remove the tape as shown in the illustration.



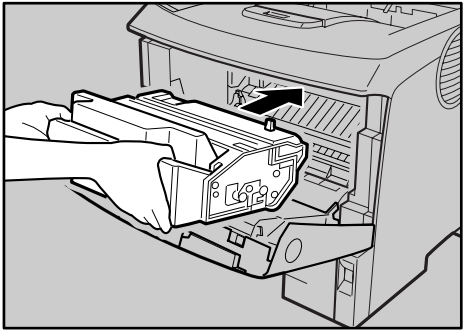
5 Pull out the tape inside the unit horizontally while holding the cartridge with one hand as shown in the illustration.



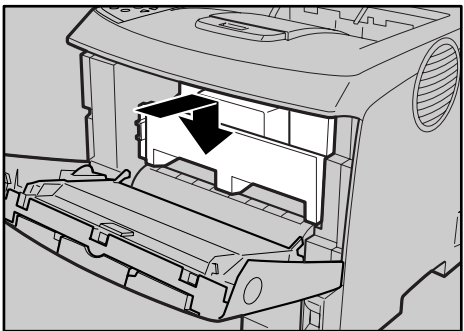
★ Important

- Be sure to remove the tape completely before installing the toner cartridge. Otherwise, the printer might be damaged.
- If you pull out the strips when the toner cartridge is slant or standing on its side, the cartridge might cause trouble with the printer.
- Be sure to pull the tape horizontally. Pulling it upward or downward may cause the toner to scatter.
- After pulling the tape out of the cartridge, toner scatters easily. Do not shake the cartridge.

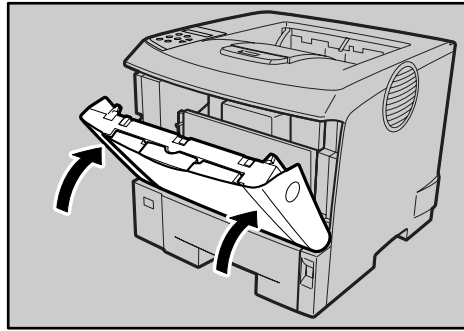
6 Hold the grips of the toner cartridge, and then insert it into the printer until it stops.



7 Lower the toner cartridge when it touches the back.



8 Close the front cover.



★ Important

- Do not close the front cover with force. If you cannot close the cover easily, pull out the toner cartridge from the printer and insert it again. After that, close the front cover again.
- Dispose of removed fixing material and tape in the same manner as ordinary plastic waste.

4 Loading Paper

The following describes how to load paper into the standard paper tray (Tray 1). For settings other than the default paper size, and information about the paper sizes that can be set in the paper tray, see “Paper and Other Media Supported by This Printer”, Hardware Guide.

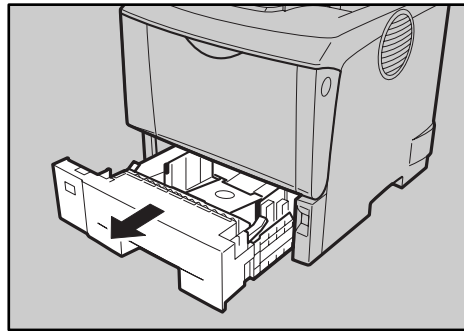
⚠ Caution

- Do not pull out the paper tray forcefully. If you do, the tray might fall and cause an injury.

★ Important

- To avoid paper jams, make sure paper is not stacked above the limit mark inside the tray. Misfeeds might occur.
- Do not mix different types of paper in a single paper tray.

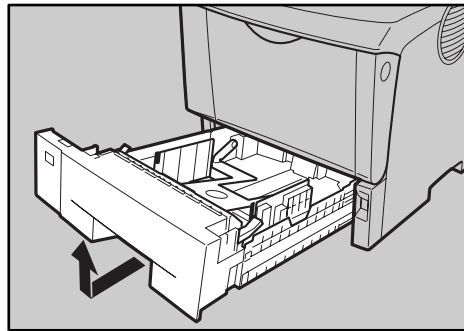
1 Pull out the paper tray until it stops.



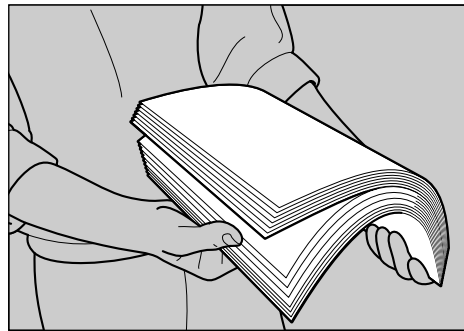
⬇ Note

- Do not touch the three white pins on the left front side of the printer.

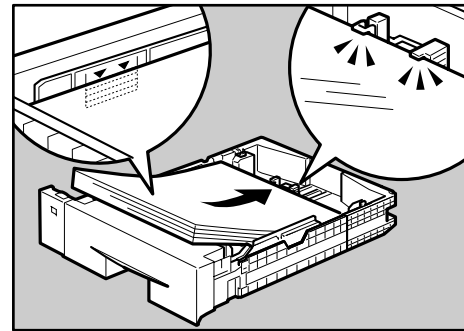
2 Lift the front side of the tray, and then pull it out of the printer.



3 Fan the paper before loading paper in the paper tray.



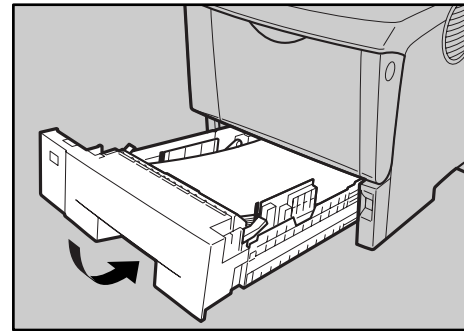
4 Load the new paper into paper tray with print side up.



★ Important

- Confirm that the top of the stack is not higher than the limit mark inside the tray.
- Confirm that the paper fits under the rear guide.

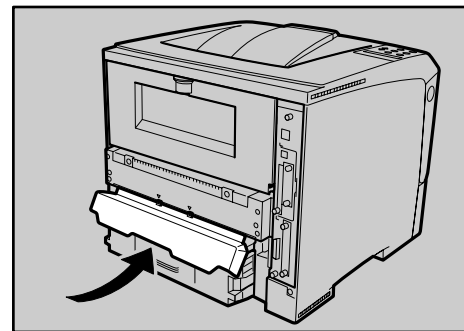
5 Carefully slide the paper tray into the printer until it stops.



★ Important

- Confirm that the setting of the paper size dial matches the size and feed direction of the paper in the tray. Otherwise, the printer might be damaged or a printing problem might occur.
- Do not slide the paper tray in and out with force. If you do, the front and side paper guides will move out of the place.

6 Insert the paper tray aligning the ▼ mark on the back of the printer with the ▲ mark on the paper tray cover, and then push in the paper tray cover in the direction shown by the arrow in the illustration.



⬇ Note

- Do not install the paper tray cover if the duplex unit is installed.

📖 Reference

- For details about usable types of paper, see “Loading Paper”, Hardware Guide.

5 Connecting the Power Cord

Follow the procedure below to turn the power on.

⚠ Warning

- The supplied power cord is for use with this equipment only. Do not use with other appliances. Doing so may result in fire, electric shock, or injury.

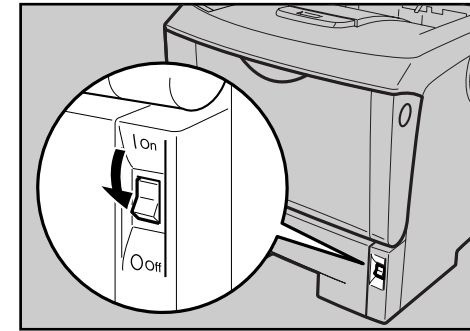
⚠ Caution

- Do not handle the plug with wet hands. Doing this might cause an electric shock.

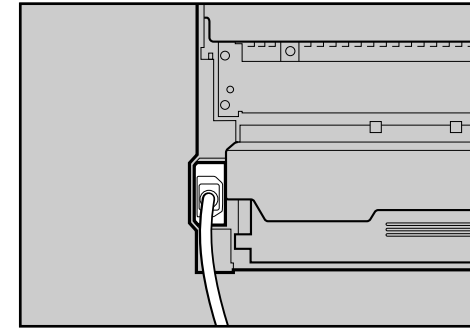
★ Important

- Make sure the power cable is plugged securely into the wall outlet.
- Turn the power off when plugging and unplugging the power plug.

1 Confirm that the printer power is turned off. If it is on, turn it off.



2 Connect the power cable to the connector on the back of the printer.



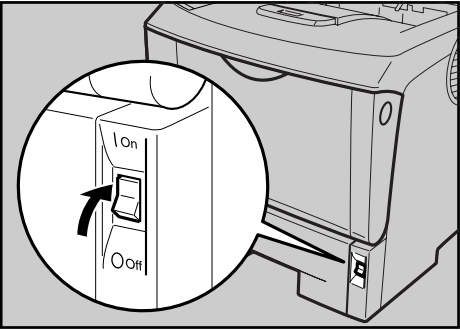
3 Insert the plug of the power cord securely into the wall outlet.

6 Selecting the Panel Display Language

⬇ Note

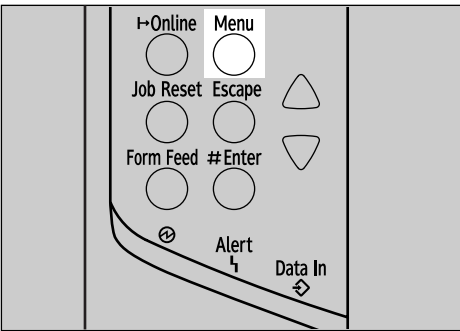
- You can select one of the following languages: English, German, French, Italian, Dutch, Swedish, Norwegian, Danish, Spanish, Finnish, Portuguese, Czech, Polish, or Hungarian.
- The default setting is English.
- If you want to use the English panel display, the following procedure is not necessary.
- The first time you turn the printer on after installation or after replacing the fusing unit, it will make several loud noises. This is due to the fusing unit initializing and is perfectly normal.

1 Turn on the printer power.



After the printer warms up, the ready message appears on the panel display.

2 Press the [Menu] key.



3 Press the [▼] or [▲] key to display [Language], and then press the [# Enter] key.

Menu:
Language

4 Press the [▼] or [▲] key to select the language, and then press the [# Enter] key.

Menu:
English

The following message appears on the panel display for two seconds, and the panel display automatically returns to the previous menu.

Menu:
*French

5 Press the [Menu] key to return to the initial screen.

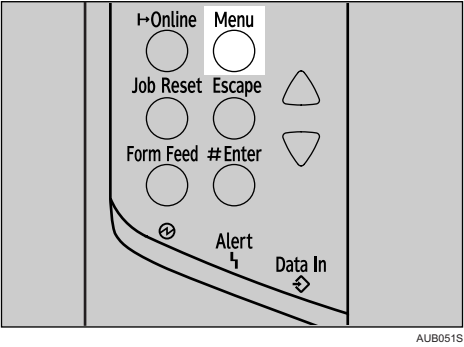
7

Printing the Test Page

You can confirm that the printer works properly by printing a test page (configuration page). However, you cannot check the connection between the printer and your computer by printing the test page.

1 Confirm that the printer power is turned on.

2 Press the **[Menu]** key.



3 Press the **[▼]** or **[▲]** key to display **[List/Test Print]**, and then press the **[# Enter]** key.

Menu:
List/Test Print

4 Press the **[▼]** or **[▲]** key to display **[Config-page]**, and then press the **[# Enter]** key.
The following message appears on the panel display.

List/Test Print:
Config.page

5 Press the **[# Enter]** key.
In a short time, the test printing will start.

★ Important

- If you cannot complete the test printing correctly, check if an error message appeared on the panel display. For more information on error messages, see “Troubleshooting” in the Hardware Guide.

8

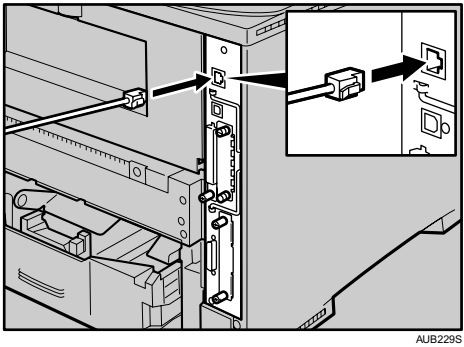
Network Connection

Follow the procedure below to connect the printer to the computer through the network. Prepare the hub and other network devices before connecting the 10BASE-T or 100BASE-TX cable to the machine's Ethernet port.

★ Important

- Use shielded Ethernet cable. Unshielded cables create electromagnetic interference that could cause malfunctions.
- The Ethernet cable is not supplied with the printer. Select your cable according to the network environment.

1 Connect the Ethernet cable to the Ethernet port.



2 Connect the other end of the cable to the printer's network, such as a hub.

↓ Note

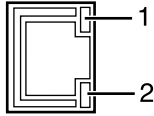
- The printer's ethernet and USB ports are not available when the gigabit ethernet board is attached to the printer.

📖 Reference

- For details about network environment settings, see Software Guide.

Reading the LED Lamps

❖ Standard Ethernet port



1. Yellow: comes on when 100BASE-TX is being used. It comes off when 10BASE-T is being used.
2. Green: comes on when the printer is properly connected to the network.

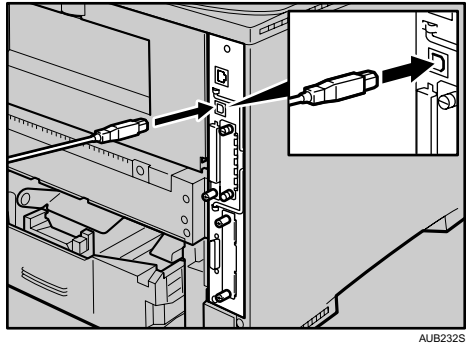
9

USB Connection

★ Important

- The USB2.0 cable is not supplied with the printer. Obtain a cable that is suitable for the computer you are using.
- USB connection is possible under Windows Me/2000/XP, Windows Server 2003/2003 R2, Mac OS 9.22 and Mac OS X (10.3.3 or higher).
- Windows Me supports USB1.1 speeds.
- USB connection with Macintosh is only possible via the printer's USB port.

1 Connect the square-shaped connector of the USB2.0 cable to the USB port.



2 Connect the opposite end's flat connector to devices such as your computer's USB interface, or a USB hub.

10

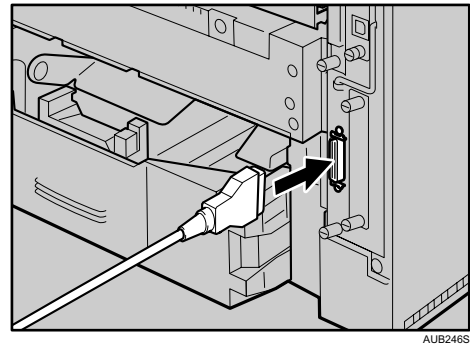
Parallel connection

★ Important

- The parallel interface cable is not provided with the printer.
- The printer's parallel connection is a standard bidirectional interface that requires an IEEE 1284-compliant 36-pin parallel cable and a computer parallel port.
- Use shielded interface cable. Unshielded cables create electromagnetic interference that could cause malfunctions.

1 Turn off the printer and computer.

2 Connect the cable to the interface connector.



3 Securely attach the other end of the parallel cable to your computer's parallel port. Secure the cable.

📖 Reference

- For details about settings for parallel connection printing, see Software Guide.

Quick Installation Guide

11

Ethernet Configuration

Make the following network settings according to the network interface you are using. You can use SmartDeviceMonitor for Admin or a Web browser to make IP address-related settings in a TCP/IP-capable environment.

★ Important

- Configure the printer for the network using the control panel.
- The following table shows the control panel settings and their default values. These items appear in the “Host Interface” menu.

Setting Name	Value	
DHCP	On	
IPv4 Address	011.022.033.044	
Subnet Mask	000.000.000.000	
Gateway Address	000.000.000.000	
Frame Type (NW)	Auto	
Active Protocol	IPv4	Active
	IPv6	Not Active
	NetWare	Active
	SMB	Active
	AppleTalk	Active
Ethernet Speed	Auto Select	
LAN Type	Ethernet	

↓ Note

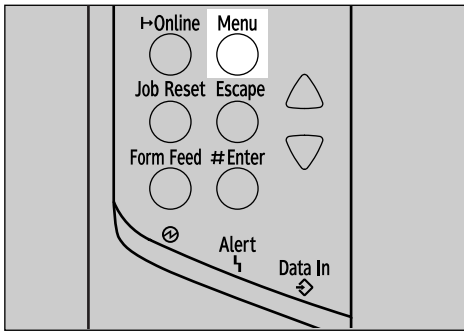
- If DHCP is in use, the IPv4 address, subnet mask, and gateway address are all set automatically.
- Make this setting only when it is necessary. See Software Guide.

Using DHCP

★ Important

- When you use this printer in DHCP environment, select [DHCP] following this procedure.
- When [DHCP] is selected, you cannot make settings for the following items:
 - IPv4 Address
 - Subnet Mask
 - Gateway Address
- Consult your network administrator for information about making network settings.

- 1 Press the **[Menu]** key.



- 2 Press the **[▼]** or **[▲]** key to display **[Host Interface]**, and then press the **[# Enter]** key.

Menu:
Host Interface

- 3 Press the **[▼]** or **[▲]** key to display **[Network setup]**, and then press the **[# Enter]** key.

Host Interface:
Network Setup

- 4 Press the **[▼]** or **[▲]** key to display **[IPv4 Settings]**, and then press the **[# Enter]** key.

Network Setup:
IPv4 Settings

- 5 Press the **[▼]** or **[▲]** key to display **[DHCP]**, and then press the **[# Enter]** key.

IPv4 Settings:
DHCP

- 6 Press the **[▼]** or **[▲]** key to set **[On]** or **[Off]**, and then press the **[# Enter]** key.

DHCP:
*On

- 7 Press the **[Menu]** key to return to the initial screen.

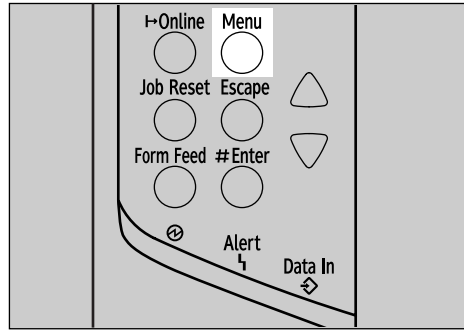
- 8 Print a configuration page to confirm the settings made.

Reference

- For details about printing the configuration page, see "Printing the Test Page".

Specifying a Network Address

- 1 Press the **[Menu]** key.



- 2 Press the **[▼]** or **[▲]** key to display **[Host Interface]**, and then press the **[# Enter]** key.

Menu:
Host Interface

- 3 Press the **[▼]** or **[▲]** key to display **[Network setup]**, and then press the **[# Enter]** key.

Host Interface:
Network Setup

- 4 Press the **[▼]** or **[▲]** key to display **[Active Protocol]**, and then press the **[# Enter]** key.

Network Setup:
Active Protocol

- 5 Press the **[▼]** or **[▲]** key to select the network protocol, and then press the **[# Enter]** key.

Active Protocol:
IPv4

- 6 Press the **[▼]** or **[▲]** key to set **[Active]** or **[Not Active]**, and then press the **[# Enter]** key.

IPv4:
*Active

Set other protocols you need to set in the same way.

- Select [Not Active] for unused protocols.
- Enable IPv4 to use the Pure IPv4 environment of NetWare 5/5.1, NetWare 6/6.5.

- 7 Press the **[Escape]** key until the screen returns to the **[Network Setup]** menu.

- 8 If you use IPv4, assign the IPv4 address to the printer. Press the **[▼]** or **[▲]** key to display **[IPv4 Settings]**, and then press the **[# Enter]** key.

Network Setup:
IPv4 Settings

To get the IPv4 address for the printer, contact your network administrator.

- 9 To specify the IPv4 Address, press the **[▼]** or **[▲]** key to display **[IP v4 Address]**, and then press the **[# Enter]** key.

IPv4 Settings:
IPv4 Address

- 10 Press the **[▼]** or **[▲]** key to enter the address, and then press the **[# Enter]** key. Settings made.

IPv4 Address:
192. 0. 0. 0

Press the **[▼]** or **[▲]** key to enter the left most entry field of the address. After entering the left field, press the **[# Enter]** key, and then you can enter the next field. After completing to enter in the all fields, press the **[# Enter]** key. Use this method to assign Subnet Mask and Gateway Address.

- Do not set "011.022.033.044" as the IPv4 address.
- The value moves by 10 if the **[▼]** or **[▲]** key is kept pressed.
- Set Subnet Mask and the Gateway address in the same way.

- 11 Press the **[Menu]** key to return to the initial screen.

- 12 Print a configuration page to confirm the settings made.

Reference

- For details about printing the configuration page, see "Printing the Test Page".

12 Installing the Printer Driver

You can install the printer drivers and software easily from the CD-ROM labeled "Printer Drivers and Utilities".

Click [Quick Install] in the window of the CD-ROM to install PCL and RPCS printer drivers. To install the PostScript 3 printer driver, click the [PostScript 3 Printer Driver] button. For more information about the PostScript 3 printer driver, see Software Guide.

When the TCP/IP protocol is used, SmartDevice Monitor for Client will be installed as well.

When using with TCP/IP protocol, confirm the followings:

- ☐ The printer is connected to a network with the interface cable.
- ☐ The TCP/IP protocol is set.
- ☐ The IP (IPv4) address is set for the printer and the computer.

Important

- To install printer driver under Windows 2000/XP Professional, and Windows Server 2003/2003 R2, you must have an account that has Manage Printers permission. Log on as an Administrator.
- Only the printer driver, and not the SmartDevice Monitor for Client is installed when using this printer under USB or parallel. If you connect using USB, see Software Guide.

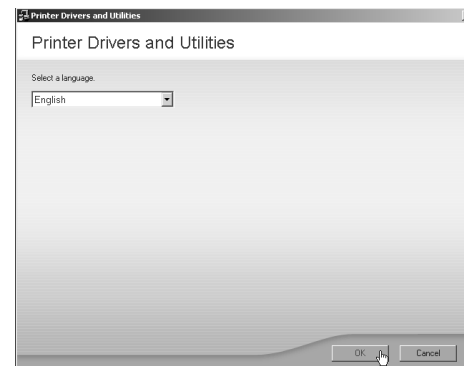
- 1 Quit all applications currently running.

- 2 Insert the CD-ROM into the CD-ROM drive.

The installer starts.
Auto Run may not work with the certain operating system settings. If this happens, launch "Setup.exe" on the CD-ROM root directory.

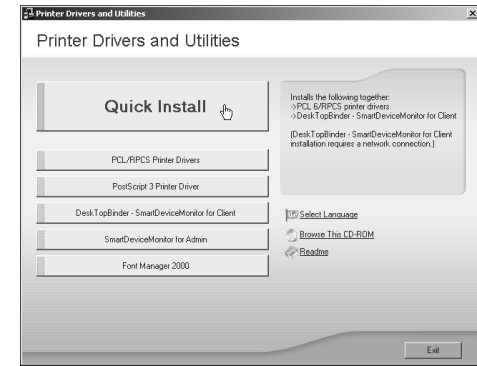
- 3 Select an interface language, and then click **[OK]**.

The default interface language is English.



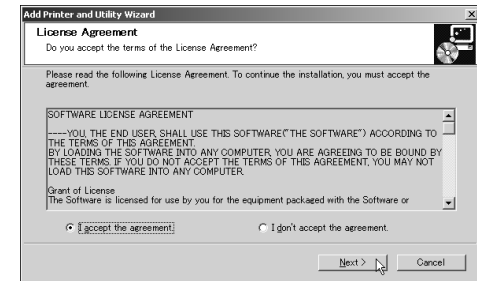
- 4 Click **[Quick Install]**.

The software license agreement appears in the [License Agreement] dialog box.

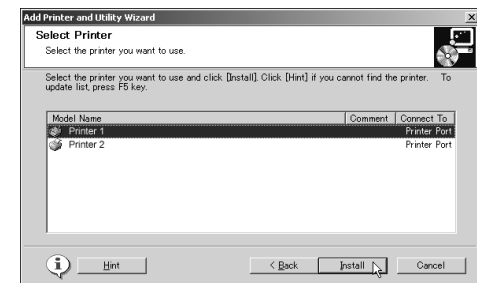


This is an example when English is selected in step 3.

- 5 After reading through all of the contents, click **[I accept the agreement]** to agree with the License Agreement, and then click **[Next >]**.



- 6 Select the printer model you want to install in the "Select Printer" dialog box.

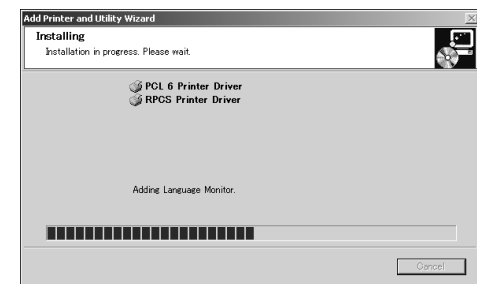


Note

- For a network connection via TCP/IP, select the printer whose IP address is displayed in [Connect to].
- For parallel connection, select the printer whose printer port is displayed in [Connect to].

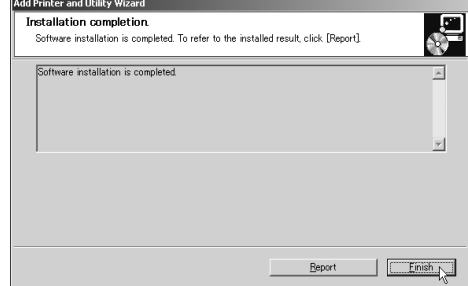
- 7 Click **[Install]**.

The following display appears while installing the printer driver.



- 8 Click **[Finish]**.

A message about restarting the computer may appear. Restart the computer to complete installation.



- 9 Click **[Exit]** in the first dialog box of the installer, and then take out the CD-ROM.



Note

- To stop installation of the selected software, click [Cancel] before installation is completed.

Reference

- Quick Install is not available unless bidirectional communication between the printer and computer is enabled via parallel connection. For details about bidirectional communication between printer and computer, see "Printing with Parallel Connection", Software Guide.