

Reissued: 27-Jan-15

Model: BRG-MF1a	Date: 18-Oct-12	No.: RJ030001j
-----------------	-----------------	----------------

RTB Reissue

The items in bold italics have been corrected or added.

Subject: Firmware Release Note: Engine/Controller		Prepared by: J. Mochizuki	
From: 3rd Tech Service Sect., MFP/Printer Tech Service Dept.			
Classification:	<input type="checkbox"/> Troubleshooting <input type="checkbox"/> Mechanical <input type="checkbox"/> Paper path <input type="checkbox"/> Product Safety	<input type="checkbox"/> Part information <input type="checkbox"/> Electrical <input type="checkbox"/> Transmit/receive <input checked="" type="checkbox"/> Other (Firmware)	<input type="checkbox"/> Action required <input type="checkbox"/> Service manual revision <input type="checkbox"/> Retrofit information <input checked="" type="checkbox"/> Tier 2

This RTB has been issued to announce the firmware release information for the **Engine/Controller**.

Version	Program No.	Effective Date	Availability of RFU
2.0.9	J0305614H	November 2014 production	Not available
2.0.8	J0305610G_208	September 2014 production	Not available
2.0.7	J0305614F_207	April 2014 production	Not available
2.0.5	J0305614F_205	March 2014 production	Not available
2.0.3	J0305614E_203	October 2013 production	Not available
1.5.0	J0305614E_150	August 2013 production	Not available
1.1.2	J0305614E_112	May 2013 production	Not available
1.0.8	J0305614E	March 2013 production	Not available
1.0.6	J0305614D	December 2012 production	Not available
1.0.5	J0305614C	November 2012 production	Not available
1.0.4	J0305614B	September 2012 production	Not available

Note: Definition of Availability of RFU via @Remote
"Available": The firmware can be updated via RFU or SD card.

"Not available": The firmware can only be updated via SD card.

Version	Modified Points or Symptom Corrected
2.0.9	Symptoms corrected: <ol style="list-style-type: none"> <i>Paper width is not detected correctly in duplex mode when the "Preprinted paper" setting is selected.</i> <i>The printer may sometimes freeze if a job is canceled in Envelope mode.</i> <i>The printer may sometimes freeze after jammed paper is removed.</i> <i>(Other minor bugs were corrected).</i> Other changes: <i>Wireless specifications were modified to conform to requirements of the R&TTE directive (applicable to 2015 models).</i>
2.0.8	Symptom corrected: Improper description of the instruction displayed for jam removal has been corrected.
2.0.7	Symptom corrected: The printer timer is not accurate.

Reissued: 27-Jan-15

Model: BRG-MF1a	Date: 18-Oct-12	No.: RJ030001j
-----------------	-----------------	----------------

Version	Modified Points or Symptom Corrected
	<p>Other changes:</p> <ol style="list-style-type: none"> 1. Color scanning is now available even when "Original type" in the Option settings is not set to "Full color (text/photo)". 2. It is now possible to specify the sender's name inside the error message that appears when the user tries to send a email (Scanner) or Internet FAX without having selected the sender name. 3. A screen for entering the original size was added after the copy enlargement/reduction screen. 4. The "Automatic Printing Report" settings can be changed from the operation panel as well as from Web Image Monitor (User Tools -> Fax Features -> Administrator Tools -> Parameter Settings -> Automatic Printing Report). 5. A setting was added that allows the user to skip the dialog for entering the administrator password. Note: If "Inactive" is selected in the "Change Login PW" dialog, the box for entering the login password will not be displayed after that (User Tools -> System Settings -> Administrator Tools -> Change Login PW). 6. The maximum number of characters for an Address Book entry was increased from 10 to 19.
2.0.5	<p>Specification Change: The maximum timer setting for entering Energy Saver mode was reduced from 240 to 60 minutes, in compliance with revisions made to BA regulations.</p> <p>Symptoms corrected:</p> <ol style="list-style-type: none"> 1. Copy, Scanner and Printer functions are disabled when a smart phone is connected to the USB port. 2. The bottom three lines of the LCD display may disappear when unplugging an iPhone or other device that does not support Pictbridge from the USB port.. 3. User authentication for ScanToFolder (SMB) fails if the data size of the folder is larger than 256 Bytes. 4. The image may shift about 1mm from the second page on. 5. I-FAX data may be partially corrupted when a document is sent in high resolution mode. 6. The maximum number of digits for a PC-FAX number is different inside the PC application and printer. This limitation has been unified to a maximum of 50 digits.
2.0.3	<p>Specification Changes:</p> <ol style="list-style-type: none"> 1. Support for SSL3.0 and TLS1.0. 2. Support for Phase 2 of the IPv6 Ready Logo Program. 3. The device might not be able to perform Scan to SMB to a network-attached-storage (NAS) device. 4. Support for the Distributed File System (DFS) feature for Scan to SMB. However, only "Manual Entry" can be used to input the destination; "Browse Network" cannot be used. 5. Tray 2, Tray 3 and Bypass tray can be selected for PictBridge.

Reissued: 27-Jan-15

Model: BRG-MF1a	Date: 18-Oct-12	No.: RJ030001j
-----------------	-----------------	----------------

Version	Modified Points or Symptom Corrected
	Symptoms Corrected: 1. Incorrect wording of Web Image Monitor. 2. Other minor bugs
1.5.0	Symptoms corrected: 1. DHCP may not work when the printer is connected via wireless LAN. 2. A paper size mismatch may not be detected properly when using the by-pass tray. 3. The machine may not indicate on the operation panel or status monitor that the cartridge just installed is empty. 4. A print job cannot be canceled from the operation panel after User Authentication fails. 5. An unnecessary error report may be printed when receiving a fax. 6. Automatic fax reception fails if the number of rings is set to 16 or more for telephone priority mode. 7. An incorrect message may be displayed when detecting paper end or a paper size error. 8. Paper feed may re-start from the wrong tray when new paper is loaded following paper end. 9. Other minor bugs
1.1.2	Symptoms corrected: 1. Occasionally phone call is automatically terminated and the line is switched to FAX. 2. Paper mismatch error is not detected in some conditions of by-pass feeding. 3. Some jobs may remain after performing all job cancel. 4. Occasionally printer does not receive a new job after canceling a job. 5. Printer stalls after turning on the main switch. 6. Occasionally machine stalls indicating "Processing" on the display. 7. Other minor bugs
1.0.8	Symptoms corrected: 1. Cannot connect to the network if the printer has not been used for 30 minutes or more. 2. Other minor bugs were corrected. Other changes: 1. SC580-00 (37V Detection Time-out) was added. 2. SC570-01 (Power Pack Error) was added.
1.0.6	Symptoms corrected: 1. Printer hangs after ejecting a blank sheet. 2. Occasionally a print job is automatically canceled during network printing. 3. IPP print cannot be done with MacOS Lion (10.7) and Ubuntu 11.10 or later versions. 4. "Tray 3 rear cover open" is mis-detected even if the optional tray is not installed. 5. Paper tray cannot be selected to feed paper with "Form Feed" button when a paper size mismatch is detected. 6. Other minor bugs
1.0.5	Symptoms corrected: 1. Linux: Printing stops for 5 minutes after 3rd page is fed out if 3 page

Reissued: 27-Jan-15

Model: BRG-MF1a	Date: 18-Oct-12	No.: RJ030001j
-----------------	-----------------	----------------

Version	Modified Points or Symptom Corrected
	<p>original is printed in duplex mode.</p> <ol style="list-style-type: none">2. By-pass tray cannot be selected as a priority tray of printer.3. 2nd page of 2-sided original is not printed even if the Form Feed key is pressed after a paper size error occurs.4. Minor bug corrections
1.0.4	<p>Modifications from ver.1.0.0 to 1.0.4.</p> <p>Symptoms corrected:</p> <ol style="list-style-type: none">1. The width of the paper may not be detected correctly under the following conditions:<ul style="list-style-type: none">- Single-sided LT originals are scanned in the ADF for duplex copies (1 set)- Originals are scanned at +25% enlargement- The user presses the Color Start key2. Printing may stop if the ink cartridge runs out of ink during a copy job.3. The GJ Log tool does not function.4. The machine stalls if the Ink End and Paper End conditions occur at the same time.5. Wording corrections were made for several display languages.6. Other minor bugs were corrected.7. Engine Setting does not appear in the SP mode menu.

Reissued: 30-Jan-17

Model: BRG-MF1c	Date: 18-Oct-12	No.: RJ032001k
-----------------	-----------------	----------------

RTB Reissue

The items in ***bold italics*** have been corrected or added.

Subject: Firmware Release Note: Engine/Controller		Prepared by: Y.Saitoh	
From: 1st Tech Service Sect., MFP/Printer Tech Service Depart.			
Classification:	<input type="checkbox"/> Troubleshooting <input type="checkbox"/> Mechanical <input type="checkbox"/> Paper path <input type="checkbox"/> Product Safety	<input type="checkbox"/> Part information <input type="checkbox"/> Electrical <input type="checkbox"/> Transmit/receive <input checked="" type="checkbox"/> Other (Firmware)	<input type="checkbox"/> Action required <input type="checkbox"/> Service manual revision <input type="checkbox"/> Retrofit information <input checked="" type="checkbox"/> Tier 2

This RTB has been issued to announce the firmware release information for the Engine/Controller.

This firmware is packaged firmware which includes “Main” firmware and “Printer” firmware. The latest version of each are listed in “Modified Points or Symptom Corrected” below.

How to confirm the current version information:

“Main”

[User Tools] < [System settings] < [Administrator Tools]

“Printer”

[User Tools] < [Printer Features] < [List/Test Print]

< [Config. Page] < [System Version]

Version	Program No.	Effective Date	Availability of RFU
2.0.9	J0325614H	November 2014 production	Not available
2.0.8	J0325610G_208	October 2014 production	Not available
2.0.7	J0325614F_207	April 2014 production	Not available
2.0.5	J0325614F_205	March 2014 production	Not available
2.0.3	J0325614E_203	October 2013 production	Not available
1.5.0	J0325614E_150	August 2013 production	Not available
1.1.2	J0325614E_112	May 2013 production	Not available
1.0.8	J0325614E	March 2013 production	Not available
1.0.6	J0325614D	December 2012 production	Not available
1.0.5	J0325614C	November 2012 production	Not available
1.0.4	J0325614B	September 2012 production	Not available

Note: Definition of Availability of RFU via @Remote

“Available”: The firmware can be updated via RFU or SD card.

“Not available”: The firmware can only be updated via SD card.

Reissued: 30-Jan-17

Model: BRG-MF1c	Date: 18-Oct-12	No.: RJ032001k
-----------------	-----------------	----------------

Version	Modified Points or Symptom Corrected
2.0.9	<p>Symptoms corrected:</p> <ol style="list-style-type: none"> 1. Paper width is not detected correctly in duplex mode when the "Preprinted paper" setting is selected. 2. The printer may sometimes freeze if a job is canceled in Envelope mode. 3. The printer may sometimes freeze after jammed paper is removed. 4. (Other minor bugs were corrected). <p>Other changes:</p> <p>Wireless specifications were modified to conform to requirements of the R&TTE directive (applicable to 2015 models).</p> <p>"Main" v2.18.00 "Printer" v2.0.3</p>
2.0.8	<p>Symptom corrected:</p> <p>Improper description of the instruction displayed for jam removal has been corrected.</p>
2.0.7	<p>Symptom corrected:</p> <p>The printer timer is not accurate.</p> <p>Other changes:</p> <ol style="list-style-type: none"> 1. Color scanning is now available even when "Original type" in the Option settings is not set to "Full color (text/photo)". 2. It is now possible to specify the sender's name inside the error message that appears when the user tries to send a email (Scanner) or Internet FAX without having selected the sender name. 3. A screen for entering the original size was added after the copy enlargement/reduction screen. 4. The "Automatic Printing Report" settings can be changed from the operation panel as well as from Web Image Monitor (User Tools -> Fax Features -> Administrator Tools -> Parameter Settings -> Automatic Printing Report). 5. A setting was added that allows the user to skip the dialog for entering the administrator password. Note: If "Inactive" is selected in the "Change Login PW" dialog, the box for entering the login password will not be displayed after that (User Tools -> System Settings -> Administrator Tools -> Change Login PW). 6. The maximum number of characters for an Address Book entry was increased from 10 to 19.

Reissued: 30-Jan-17

Model: BRG-MF1c	Date: 18-Oct-12	No.: RJ032001k
-----------------	-----------------	----------------

Version	Modified Points or Symptom Corrected
2.0.5	<p>Specification Change: The maximum timer setting for entering Energy Saver mode was reduced from 240 to 60 minutes, in compliance with revisions made to BA regulations.</p> <p>Symptoms corrected:</p> <ol style="list-style-type: none"> 1. Copy, Scanner and Printer functions are disabled when a smart phone is connected to the USB port. 2. The bottom three lines of the LCD display may disappear when unplugging an iPhone or other device that does not support Pictbridge from the USB port.. 3. User authentication for ScanToFolder (SMB) fails if the data size of the folder is larger than 256 Bytes. 4. The image may shift about 1mm from the second page on. 5. I-FAX data may be partially corrupted when a document is sent in high resolution mode. 6. The maximum number of digits for a PC-FAX number is different inside the PC application and printer. This limitation has been unified to a maximum of 50 digits.
2.0.3	<p>Specification Changes:</p> <ol style="list-style-type: none"> 1. Support for SSL3.0 and TLS1.0. 2. Support for Phase 2 of the IPv6 Ready Logo Program. 3. The device might not be able to perform Scan to SMB to a network-attached-storage (NAS) device. 4. Support for the Distributed File System (DFS) feature for Scan to SMB. However, only "Manual Entry" can be used to input the destination; "Browse Network" cannot be used. 5. Tray 2, Tray 3 and Bypass tray can be selected for PictBridge. <p>Symptoms Corrected:</p> <ol style="list-style-type: none"> 1. Incorrect wording of Fax function and Web Image Monitor. 2. Other minor bugs
1.5.0	<p>Symptoms corrected:</p> <ol style="list-style-type: none"> 1. DHCP may not work when the printer is connected via wireless LAN. 2. A paper size mismatch may not be detected properly when using the bypass tray. 3. The machine may not indicate on the operation panel or status monitor that the cartridge just installed is empty. 4. A print job cannot be canceled from the operation panel after User Authentication fails. 5. An unnecessary error report may be printed when receiving a fax. 6. Automatic fax reception fails if the number of rings is set to 16 or more for telephone priority mode. 7. An incorrect message may be displayed when detecting paper end or a paper size error. 8. Paper feed may re-start from the wrong tray when new paper is loaded following paper end. 9. Other minor bugs

Reissued: 30-Jan-17

Model: BRG-MF1c	Date: 18-Oct-12	No.: RJ032001k
-----------------	-----------------	----------------

Version	Modified Points or Symptom Corrected
1.1.2	Symptoms corrected: <ol style="list-style-type: none">1. Occasionally phone call is automatically terminated and the line is switched to FAX.2. Paper mismatch error is not detected in some conditions of by-pass feeding.3. Some jobs may remain after performing all job cancel.4. Occasionally printer does not receive a new job after canceling a job.5. Printer stalls after turning on the main switch.6. Occasionally machine stalls indicating "Processing" on the display.7. Other minor bugs
1.0.8	Symptoms corrected: <ol style="list-style-type: none">1. Cannot connect to the network if the printer has not been used for 30 minutes or more.2. Other minor bugs were corrected. Other changes: <ol style="list-style-type: none">1. SC580-00 (37V Detection Time-out) was added.2. SC570-01 (Power Pack Error) was added.
1.0.6	Symptoms corrected: <ol style="list-style-type: none">1. Printer hangs after ejecting a blank sheet.2. Occasionally a print job is automatically canceled during network printing.3. IPP print cannot be done with MacOS Lion (10.7) and Ubuntu 11.10 or later versions.4. "Tray 3 rear cover open" is mis-detected even if the optional tray is not installed.5. Paper tray cannot be selected to feed paper with "Form Feed" button when a paper size mismatch is detected.6. Linux: Printing stops for 5 minutes after 3rd page is fed out if 3 page original is printed in duplex mode.7. By-pass tray cannot be selected as a priority tray of printer.8. Other minor bugs
1.0.5	Symptoms corrected: <ol style="list-style-type: none">1. Linux: Printing stops for 5 minutes after 3rd page is fed out if 3 page original is printed in duplex mode.2. By-pass tray cannot be selected as a priority tray of printer.3. 2nd page of 2-sided original is not printed even if the Form Feed key is pressed after a paper size error occurs.4. Minor bug corrections

Reissued: 30-Jan-17

Model: BRG-MF1c	Date: 18-Oct-12	No.: RJ032001k
-----------------	-----------------	----------------

Version	Modified Points or Symptom Corrected
1.0.4	<p>Modifications from ver.1.0.0 to 1.0.4.</p> <p>Symptoms corrected:</p> <ol style="list-style-type: none">1. The width of the paper may not be detected correctly under the following conditions:<ul style="list-style-type: none">- Single-sided LT originals are scanned in the ADF for duplex copies (1 set)- Originals are scanned at +25% enlargement- The user presses the Color Start key2. Printing may stop if the ink cartridge runs out of ink during a copy job.3. The GJ Log tool does not function.4. The machine stalls if the Ink End and Paper End conditions occur at the same time.5. Wording corrections were made for several display languages.6. Other minor bugs were corrected.7. Engine Setting does not appear in the SP mode menu.

Reissued: 27-Jan-15

Model: BRG-MF1 BT	Date: 20-May-14	No.: RJ032002b
-------------------	-----------------	----------------

RTB Reissue

The items in bold italics have been corrected or added.

Subject: Firmware Release Note: Engine/Controller		Prepared by: J. Mochizuki	
From: 3rd Tech Service Sect., MFP/Printer Tech Service Dept.			
Classification:	<input type="checkbox"/> Troubleshooting <input type="checkbox"/> Mechanical <input type="checkbox"/> Paper path <input type="checkbox"/> Product Safety	<input type="checkbox"/> Part information <input type="checkbox"/> Electrical <input type="checkbox"/> Transmit/receive <input checked="" type="checkbox"/> Other (Firmware)	<input type="checkbox"/> Action required <input type="checkbox"/> Service manual revision <input type="checkbox"/> Retrofit information <input checked="" type="checkbox"/> Tier 2

This RTB has been issued to announce the firmware release information for the **Engine/Controller**.

Version	Program No.	Effective Date	Availability of RFU
1.0.5	J0325625C_105	-	Not available
1.0.4	J0325625B_104	-	Not available
1.0.3	J0325625A_103	-	Not available

Note: Definition of Availability of RFU via @Remote
"Available": The firmware can be updated via RFU or SD card.

"Not available": The firmware can only be updated via SD card.

Version	Modified Points or Symptom Corrected
1.0.5	Symptoms corrected: <ol style="list-style-type: none"> <i>Paper width is not detected correctly in duplex mode when the "Preprinted paper" setting is selected.</i> <i>The printer may sometimes freeze if a job is canceled in Envelope mode.</i> <i>The printer may sometimes freeze after jammed paper is removed.</i> <i>(Other minor bugs were corrected).</i> Other changes: <i>Wireless specifications were modified to conform to requirements of the R&TTE directive (applicable to 2015 models).</i>
1.0.4	Symptom corrected: Improper description of the instruction displayed for jam removal has been corrected.
1.0.3	Symptom corrected: The printer timer is not accurate. Other changes: <ol style="list-style-type: none"> Color scanning is now available even when "Original type" in the Option settings is not set to "Full color (text/photo)". It is now possible to specify the sender's name inside the error message that appears when the user tries to send a email (Scanner) or Internet FAX without having selected the sender name. A screen for entering the original size was added after the copy enlargement/reduction screen.

Reissued: 27-Jan-15

Model: BRG-MF1 BT	Date: 20-May-14	No.: RJ032002b
-------------------	-----------------	----------------

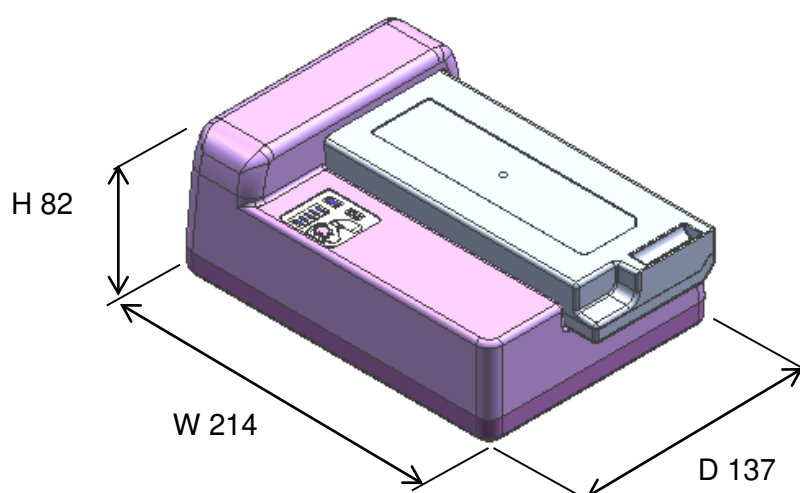
Version	Modified Points or Symptom Corrected
	<ul style="list-style-type: none">4. The "Automatic Printing Report" settings can be changed from the operation panel as well as from Web Image Monitor (User Tools -> Fax Features -> Administrator Tools -> Parameter Settings -> Automatic Printing Report).5. A setting was added that allows the user to skip the dialog for entering the administrator password. Note: If "Inactive" is selected in the "Change Login PW" dialog, the box for entering the login password will not be displayed after that (User Tools -> System Settings -> Administrator Tools -> Change Login PW).6. The maximum number of characters for an Address Book entry was increased from 10 to 19.

Model: BRG-MF1 BT		Date: 11-Aug-14	No.: RJ032003
Subject: Information about the Battery Charger P5		Prepared by: J. Mochizuki	
From: 3rd Tech Service Sect., MFP/Printer Tech Service Dept.			
Classification:	<input type="checkbox"/> Troubleshooting <input type="checkbox"/> Mechanical <input type="checkbox"/> Paper path <input type="checkbox"/> Product Safety	<input type="checkbox"/> Part information <input type="checkbox"/> Electrical <input type="checkbox"/> Transmit/receive <input type="checkbox"/> Other (Firmware)	<input type="checkbox"/> Action required <input checked="" type="checkbox"/> Service manual revision <input type="checkbox"/> Retrofit information <input type="checkbox"/> Tier 2

This RTB has been issued to announce the product information for the Battery Charger P5, an optional product for the BRG-MF1 BT.

1. Specifications

Dimensions: 214 (W) x 137 (D) x 82 (H) mm



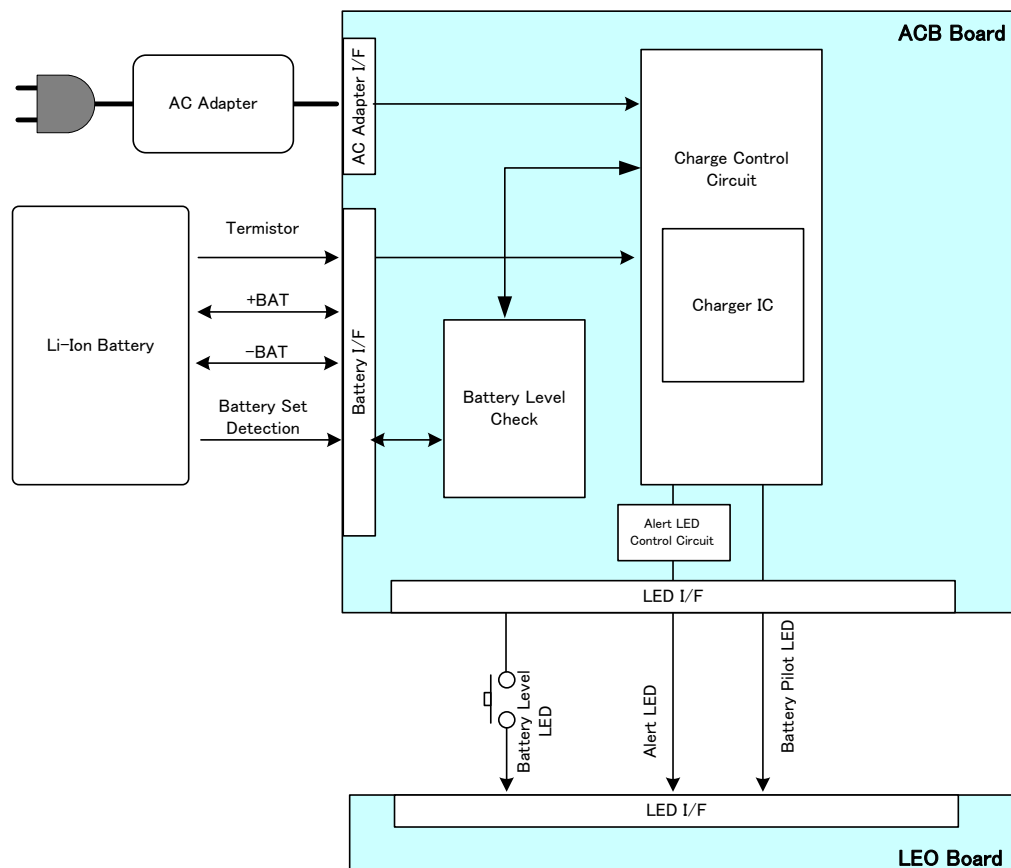
Weight:	500g (1.1 lb.)	
Power Supply:	AC 100-240V (50/60Hz)	
Charge Time:	Within 3 hours	
Power Consumption:	Stand-by:	Less than 0.5W
	Charge Mode:	Less than 50W

Environment:	Temperature Range: 0°C to 40°C (32°F to 104°F)
	Humidity Range: 5 to 80%RH

Note: The battery charger is designed so that all functions stop automatically when the temperature exceeds 60°C (140°F).

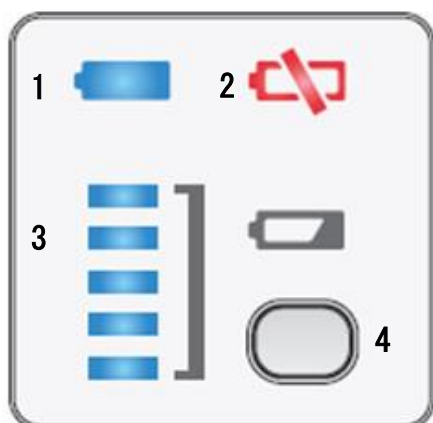
2. Product Overview:

2-1. Block diagram



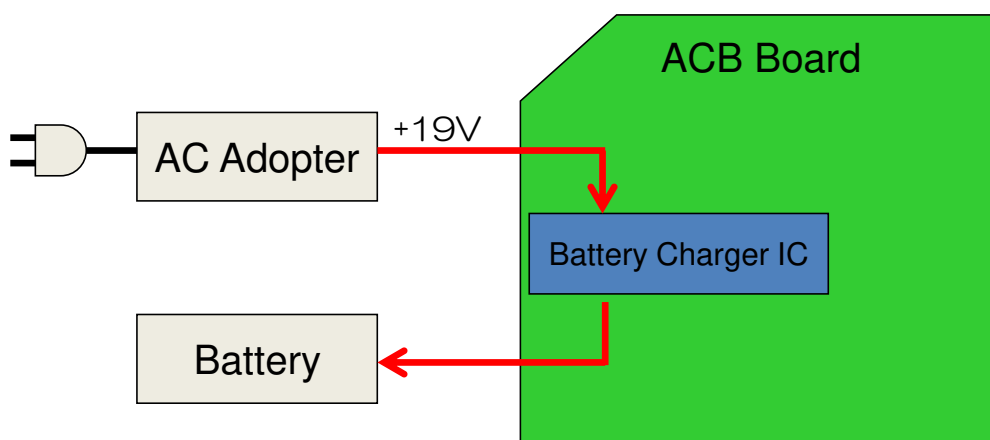
The ACB board monitors the connection and voltage of the battery to control powering on/off the battery charge and LEDs on the display. The ACB board and the LEO board used in the battery charger are the same as those used in the printer mainframe.

2-2. LED Panel (LEO Board)



1. Battery Pilot LED
Charging complete: OFF
Charging: Blinking
2. Alert LED
Turns on when an error occurs.
3. Battery Level LEDs
LEDs light when the key [4] is pressed.
4. Battery Level Check Button
Battery Level LED lights when this key is pressed.

2-3. Charge Control



Charging automatically starts when the battery is loaded into the charger if the battery's charge level is lower than 16.0V. Charging automatically stops when the battery voltage reaches 16.4V.

3. Troubleshooting

Symptom	Cause	Action
The battery is not charged. (Battery Pilot LED does not blink) The LED Alert LED lights.	Battery connection problem	Replace battery. Replace battery socket.
	Battery defective	Replace battery.
	ACB Board defective	Replace ACB Board.
The battery is not charged. (Battery Pilot LED does not blink). The LED Alert LED does not light.	AC Adaptor defective	Replace AC adaptor.
	LEO Board defective	Replace LEO Board.
	LEO board harness broken	Replace harness.
Battery Level LED does not indicate correct battery level	Battery connection problem	Replace battery. Replace battery socket.
	LEO Board defective	Replace LEO Board.
	ACB Board defective	Replace ACB Board.

Model: BRG-MF1c		Date: 19-Aug-15	No.: RJ032004
Subject: New covers to minimize static electricity		Prepared by: J. Kitagawa	
From: 1st Tech Service Sect., MFP/Printer Tech Service Dept.			
Classification:	<input type="checkbox"/> Troubleshooting <input type="checkbox"/> Mechanical <input type="checkbox"/> Paper path <input type="checkbox"/> Product Safety	<input checked="" type="checkbox"/> Part information <input type="checkbox"/> Electrical <input type="checkbox"/> Transmit/receive <input type="checkbox"/> Other (Firmware)	<input type="checkbox"/> Action required <input type="checkbox"/> Service manual revision <input type="checkbox"/> Retrofit information <input type="checkbox"/> Tier 2

Change:

- A hole in the rear cover was filled.
- A projection on the right side plate was removed.
- The Mylar does not have to be attached to the new rear cover. (The Mylar is needed only for the old rear cover.)

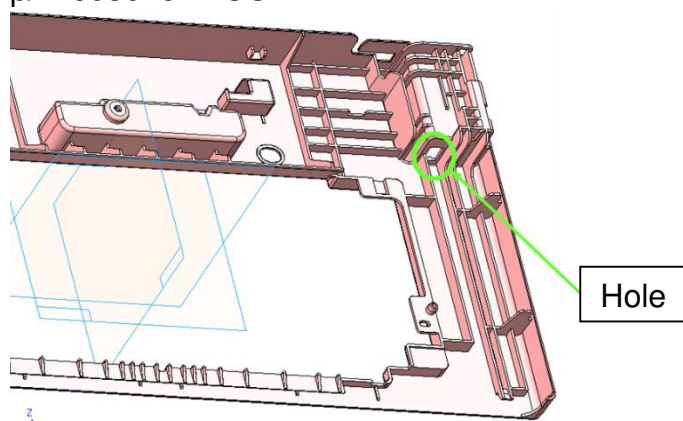
Reason: To further minimize static electricity

Important: The new Rear Cover can be installed only on units that have the new Right Side Plate. See the next page for an illustration of the right side plate and serial number information.

Old part number	New part number	Description	Q'ty	Int	Page	Index	Note
J0301541	J0301545	COVER:REAR:MF	1 → 1	X/X	5	10	
J0301544	-	SHEET:HINGE:RIGHT:MF	1 → 0				

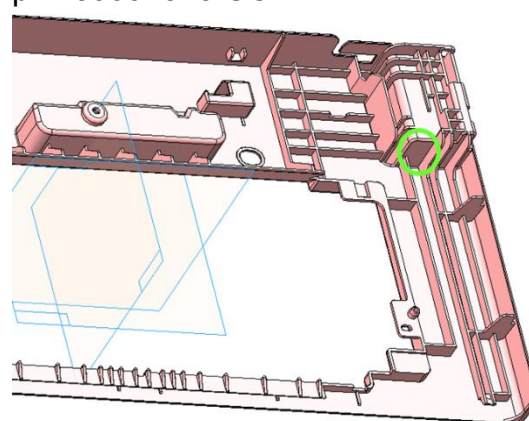
Before

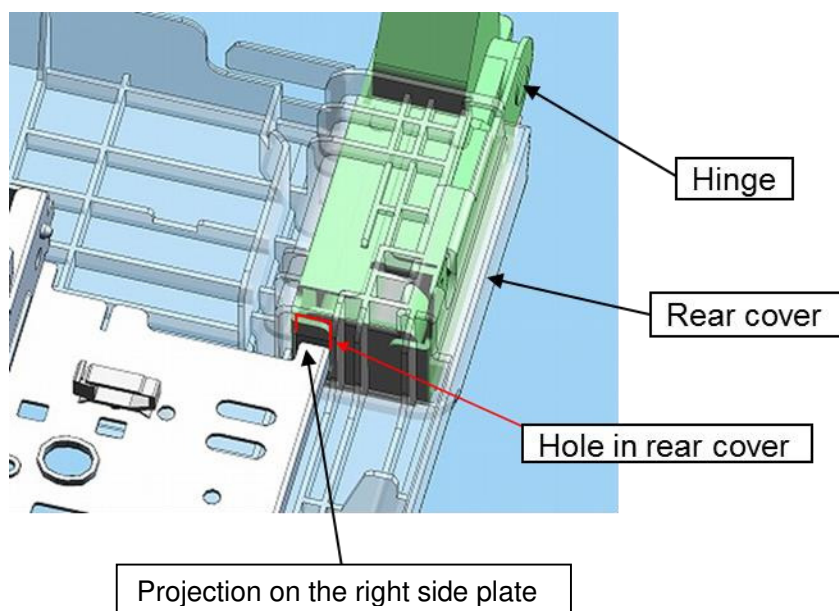
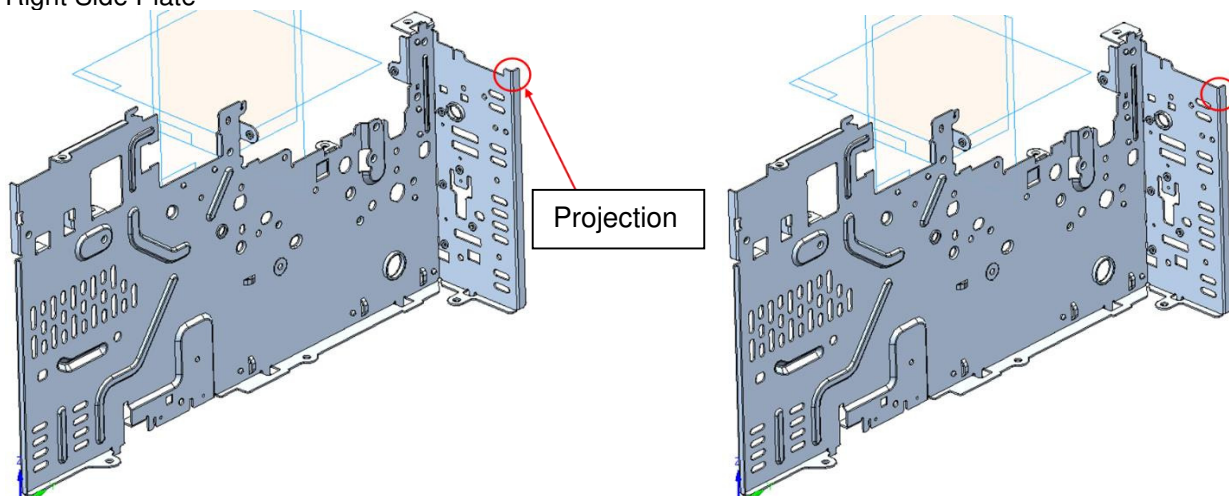
p/n: J0301541 COVER:REAR:MF



After

p/n: J0301545 COVER:REAR:MF



Model: BRG-MF1c
Date: 19-Aug-15
No.: RJ032004
Right Side Plate

Cut-in S/N

MODEL NAME	DESTINATION	CODE	SERIAL NUMBER	Production Date
Aficio SG 3100SNw	USA	J030-17	R624Q400153 -	2014.04.11
	EU/ASIA	J030-27	R633Q700001 -	2013.07.11
Aficio SG 3110SFNw	USA	J032-17	R663Q700001 -	2013.07.11
	EU/ASIA	J032-27	R663Q700261 -	2013.07.12

Model: BRG-MF1a/ BRG-MF1c/ BRG-MF1BT		Date: 21-Oct-15	No.: RJ032005
Subject: FSM revision: SC57001 description added		Prepared by: J.Kitagawa	
From: 1st Tech Service Sect.,MFP/P Tech Service Dept.			
Classification:	<input type="checkbox"/> Troubleshooting <input type="checkbox"/> Mechanical <input type="checkbox"/> Paper path <input type="checkbox"/> Product Safety	<input type="checkbox"/> Part information <input type="checkbox"/> Electrical <input type="checkbox"/> Transmit/receive <input type="checkbox"/> Other ()	<input type="checkbox"/> Action required <input checked="" type="checkbox"/> Service manual revision <input type="checkbox"/> Retrofit information <input type="checkbox"/> Tier 2

Please add the following SC description in the field service manual in section:

3.Appendix: Troubleshooting Guide > Service Call Code Tables

SC	Pattern	Error Name / Detection Criteria / Major Cause / Solution
57001	D	Power Pack failure
		The machine detects the power pack (PSU or HVPS) error.
		Defective power pack
		Turn the main power switch off and then back on. Replace the PSU or HVPS.

Model: BRG-MF1a		Date: 16-Mar-18	No.: RJ030002
Subject: Service manual revision: Scanner motor		Prepared by: Taiga Itoh	
From: 1st Tech. Support Sec. Service Support Dept.			
Classification:	<input type="checkbox"/> Troubleshooting <input type="checkbox"/> Mechanical <input type="checkbox"/> Paper path <input type="checkbox"/> Product Safety	<input type="checkbox"/> Part information <input type="checkbox"/> Electrical <input type="checkbox"/> Transmit/receive <input type="checkbox"/> Other ()	<input type="checkbox"/> Action required <input checked="" type="checkbox"/> Service manual revision <input type="checkbox"/> Retrofit information <input type="checkbox"/> Tier 2

Delete the item of how to replace the scanner motor in FSM.

Because the scanner motor is NOT a service part.

The page deleted in FSM is P.105~107.

Scanner Motor

Preparation

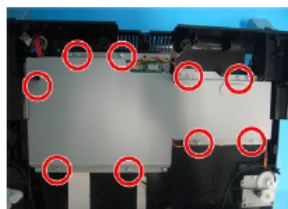
Remove:

- ADF unit (P.81)
- Exposure glass (P.94 "Scanner Unit")
- CIS module unit (P.103)

1. Remove the board cover.

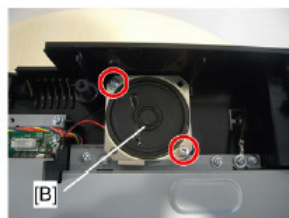
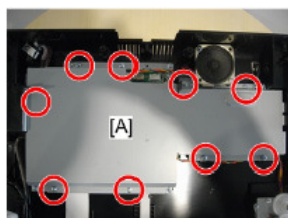
4. Replacement and Adjustment

Scanner



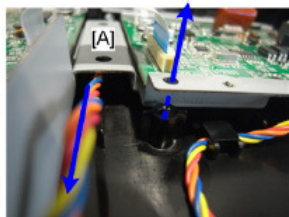
j0301089

J030: (P x 9)



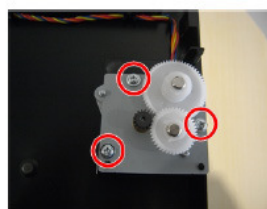
j0301038

J032: To remove the cover [A] blocked by the loudspeaker driver [B], remove the screws of the loudspeaker driver (P x 11).



j0301041

2. Remove the connector (C x 1). If the harness is stuck in the tunnel [A], remove the screw of the metal plate under the board, lift the plate slightly to create clearance, and then pull the harness out.



j0301040

3. Remove the screws (P x 3).



j0301042

4. Remove the motor (P x 2).



j0301043

Model: BRG-MF1c		Date: 16-Mar-18	No.: RJ032006
Subject: Service manual revision: Scanner motor		Prepared by: Taiga Itoh	
From: 1st Tech. Support Sec. Service Support Dept.			
Classification:	<input type="checkbox"/> Troubleshooting <input type="checkbox"/> Mechanical <input type="checkbox"/> Paper path <input type="checkbox"/> Product Safety	<input checked="" type="checkbox"/> Part information <input type="checkbox"/> Electrical <input type="checkbox"/> Transmit/receive <input type="checkbox"/> Other ()	<input type="checkbox"/> Action required <input checked="" type="checkbox"/> Service manual revision <input type="checkbox"/> Retrofit information <input type="checkbox"/> Tier 2

Delete the item of how to replace the scanner motor in FSM.

Because the scanner motor is NOT a service part.

The page deleted in FSM is P.105~107.

Scanner Motor

Preparation

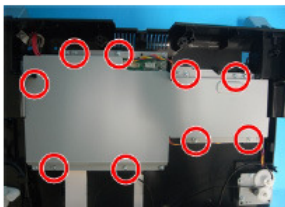
Remove:

- ADF unit (P.81)
- Exposure glass (P.94 "Scanner Unit")
- CIS module unit (P.103)

1. Remove the board cover.

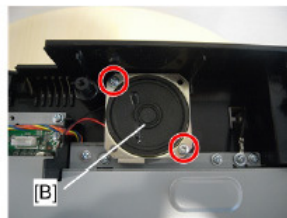
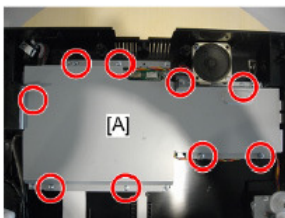
4. Replacement and Adjustment

Scanner



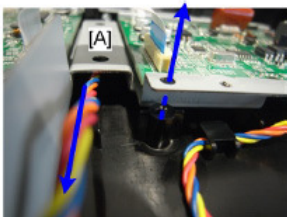
j0301089

J030: (P x 9)



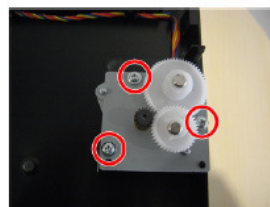
j0301038

J032: To remove the cover [A] blocked by the loudspeaker driver [B], remove the screws of the loudspeaker driver (P x 11).



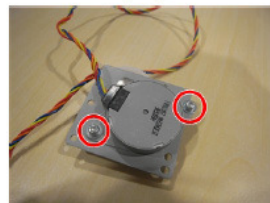
j0301041

2. Remove the connector (C x 1). If the harness is stuck in the tunnel [A], remove the screw of the metal plate under the board, lift the plate slightly to create clearance, and then pull the harness out.



j0301040

3. Remove the screws (P x 3).



j0301042

4. Remove the motor (P x 2).



j0301043