

Quick Installation Guide

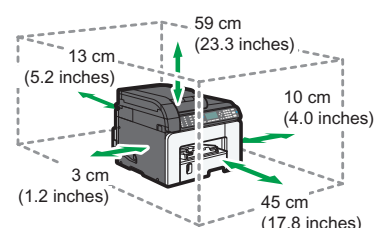
SG 3100SNw/SG 3110SFNw



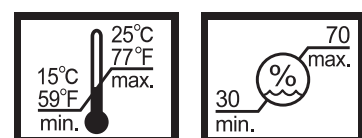
Read this manual carefully before you use the product and keep it handy for future reference. For safe and correct use, please be sure to read the Safety Information in "Safety Information" before using the machine.

This guide briefly explains how to unpack and install the machine. For details about installing options, connecting the machine (USB and network), specifying settings, and installing and using the driver, see "User Guide (HTML)".

1 Place to Install



CHV159



Power Source

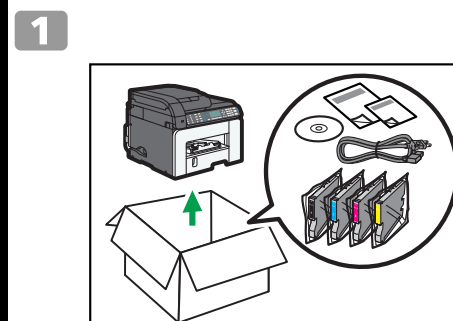
100-120 V: 60 Hz 1.2 A
220-240 V: 50/60 Hz 0.7 A

2 Unpacking

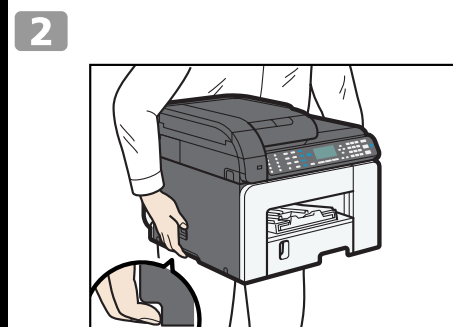


15.3 kg (33.8 lb.)

CHV164



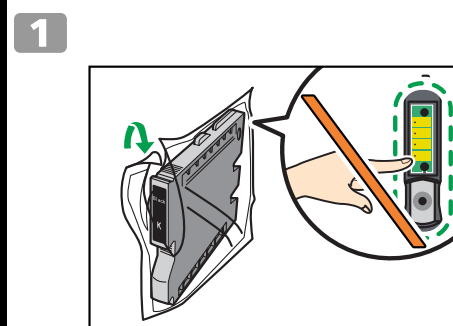
CHV158



CHV097

3 Remove the adhesive tape.

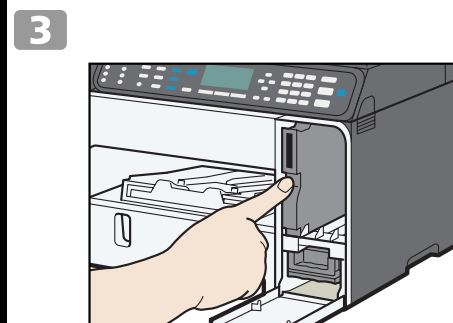
3 Installing the Print Cartridges (Starter Cartridges)



CHV077



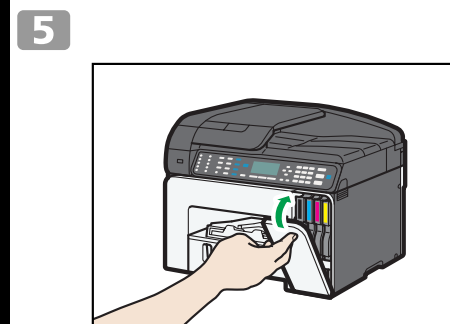
CHV077



CHV076

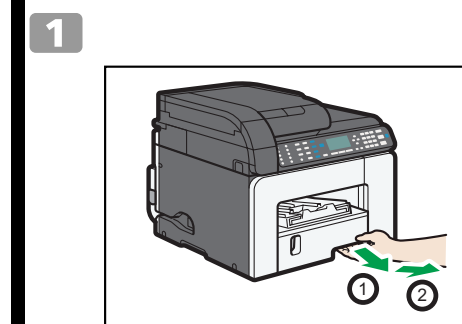


CHV156

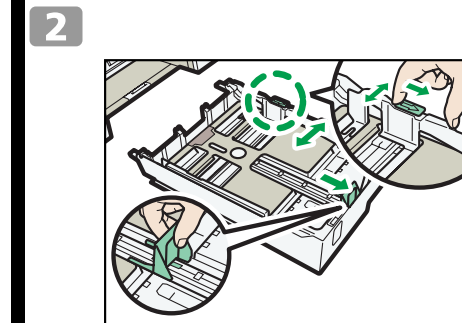


CHV079

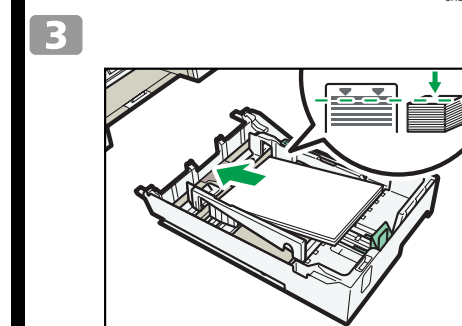
4 Loading Paper



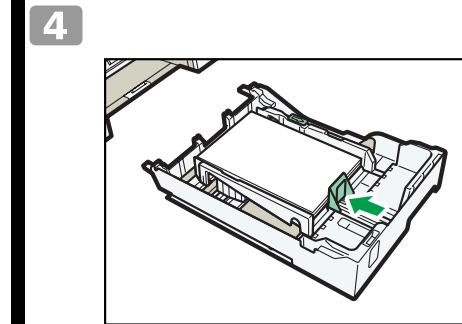
CHV036



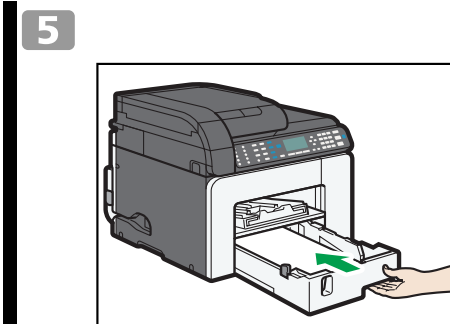
CHU058



CHU100



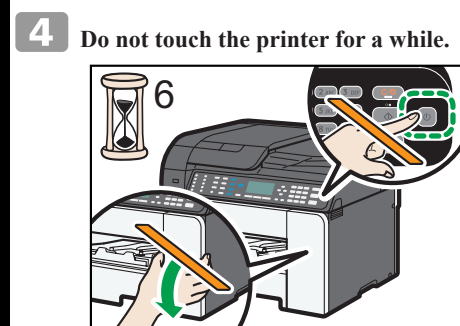
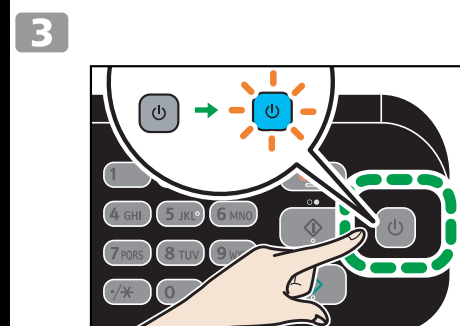
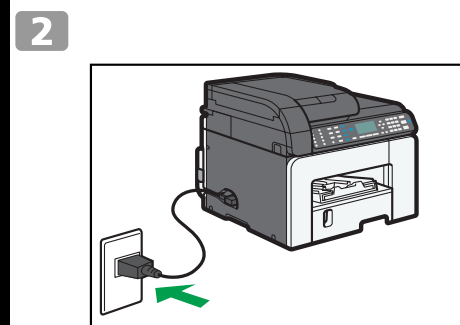
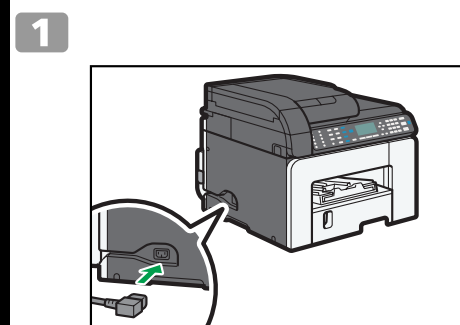
CHU099



CHV037



5 Turning the Power On

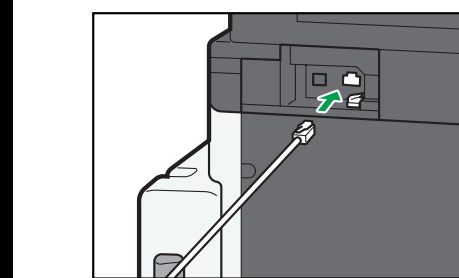
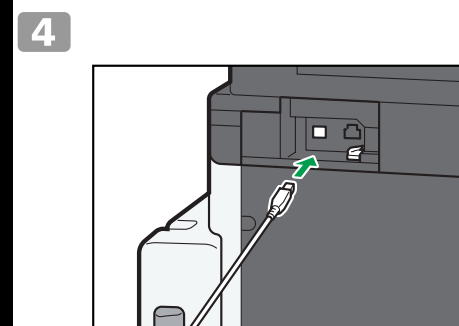
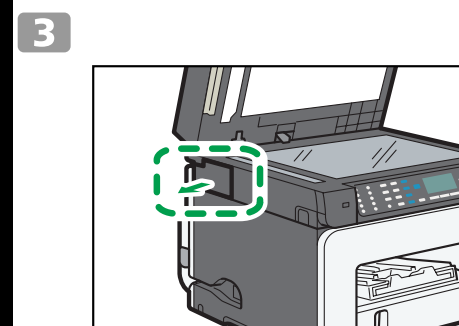
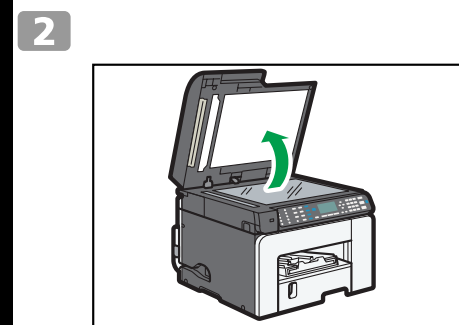
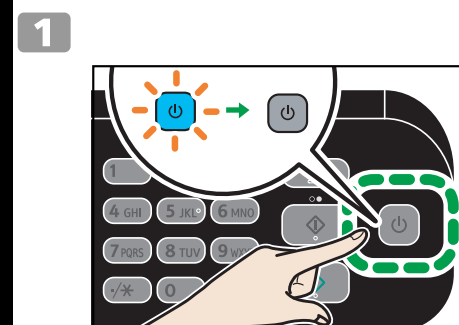


Do not remove the plug from the wall outlet while the ink is being fed.

6 Initial Setup

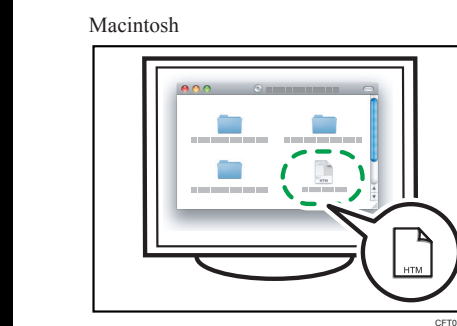
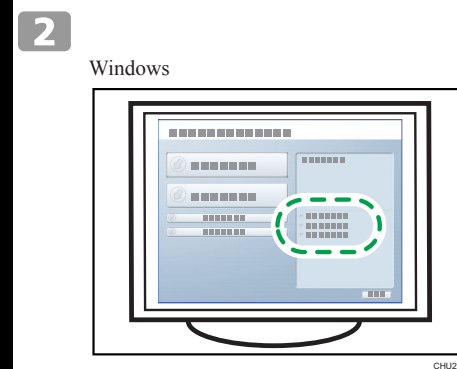
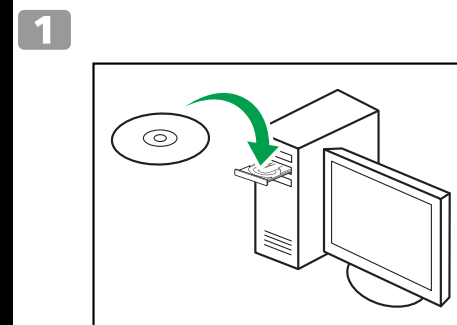
- For details, see “User Guide”.

7 Connection



8 Installing the Driver

- For details about installing the drivers and specifying network settings, see “Preparing for Printing”, “User Guide”.
- For details about test printing, see “Printing a Configuration Page”, “User Guide”.



© 2012
Printed in China
EN GB EN US
J030-6630