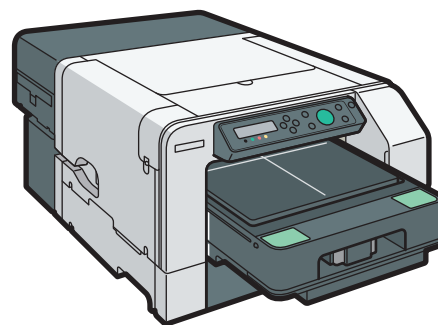


Quick Guide

This guide describes the basic printing procedures using this machine. In the next pages, the procedures for each step and particular cautions are explained.

For safe and correct use, be sure to read Safety Information before using the machine.



DYX025

1 Smoothing wrinkles/flattening fibers

To print clearly, use the optional finisher to smooth wrinkles and flatten fibers.

2 Loading the fabric in the tray

Turn the machine on, and then detach the tray.

Load in the tray the fabric you want to print on such as a T-shirt or tote bag.

★ Important

- When loading the fabric, align the vertical direction of the fabric with the print direction in the application.
- Load the fabric so that it does not stick out of the tray.

3 Printing

Load the tray into the machine, and then click [Print] on the application on the tablet device or the computer.

4 Fixing ink

Attach the protective cover to the tray. Detach the tray, and then use the optional finisher to fix ink to the fabric.

★ Important

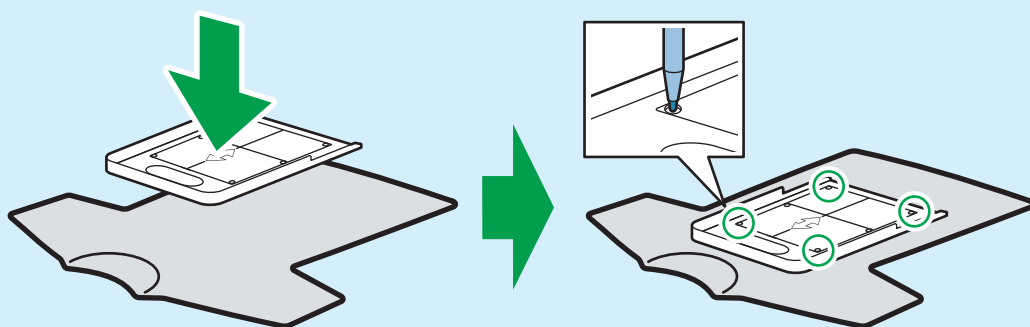
- Do not touch ink that has not fixed.

1 Smoothing wrinkles/flattening fibers

Use the optional finisher to smooth wrinkles and flatten fibers.

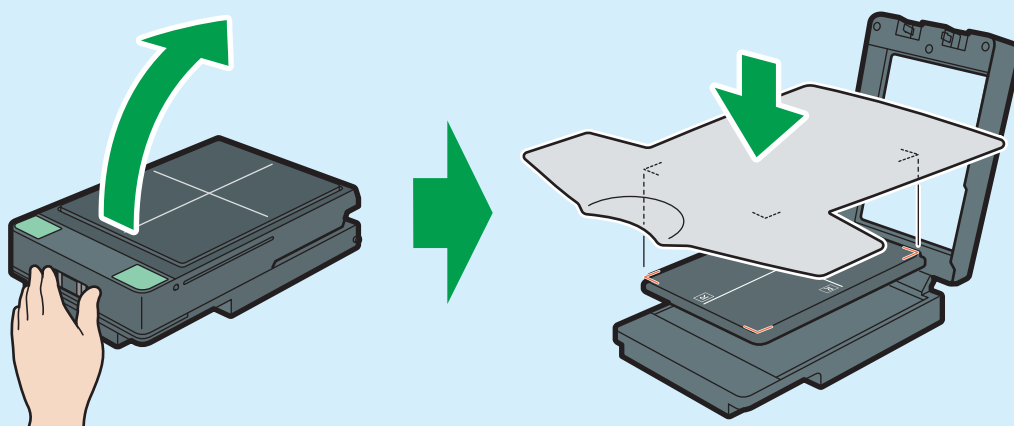
2 Loading the fabric in the tray

1



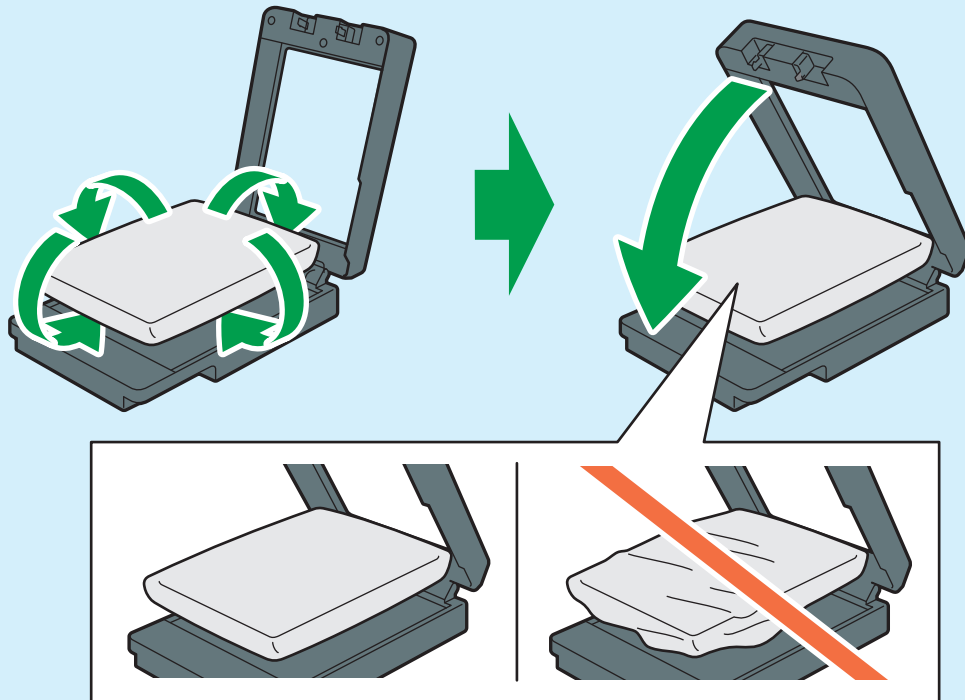
DSA197

2



DSA221

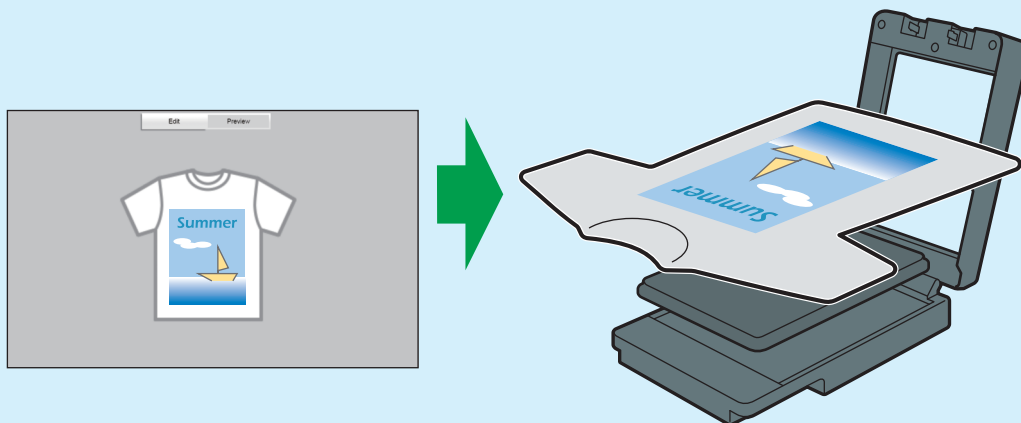
3



DSA053

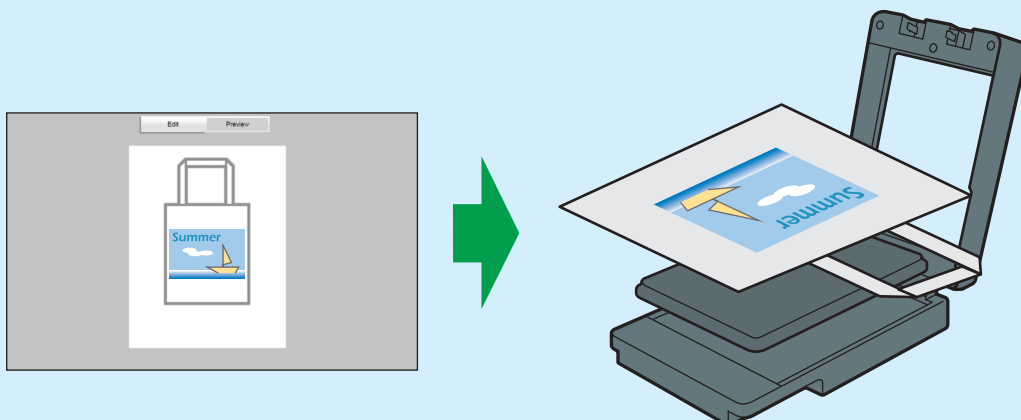
Direction of image and fabric

Portrait image (T-shirt)



DSB427

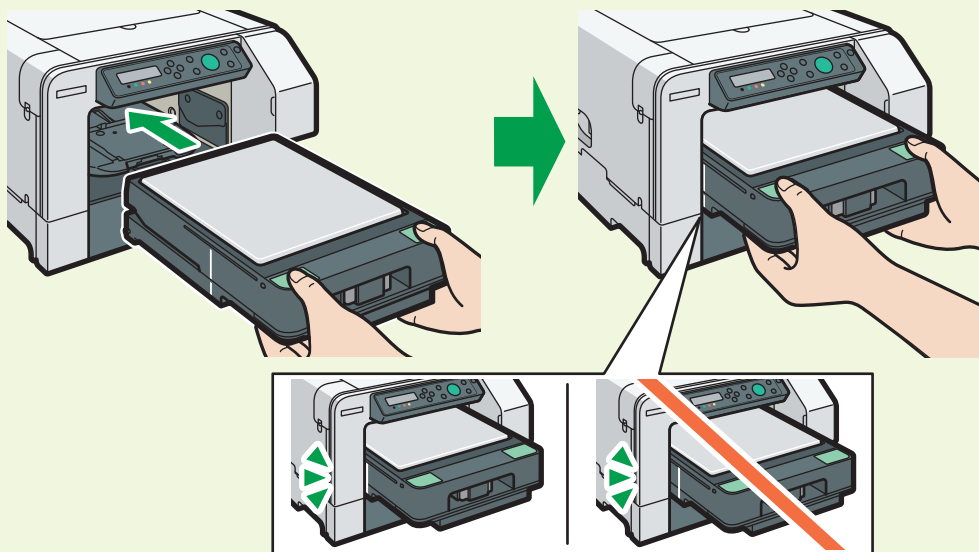
Landscape image (tote bag)



DSB428

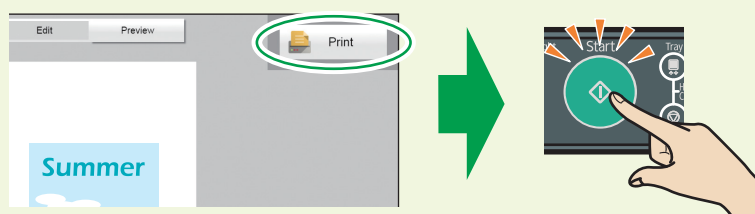
3 Printing

1



DSA063

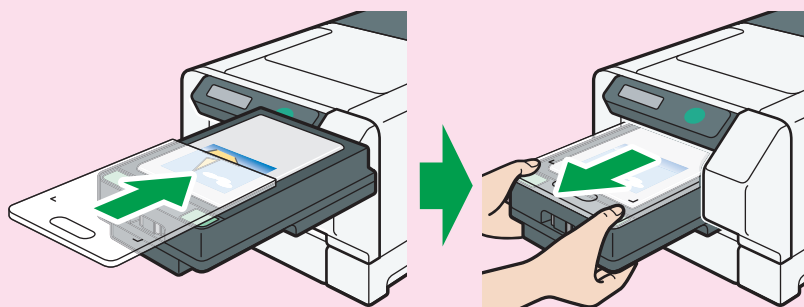
2



DSB429

4 Fixing ink

1



DYX008

2 Use the optional finisher to fix ink.

For reference, in the case of a commercially available heat press, ink was fixed at 330°F (approx. 165°C) in 90 seconds.