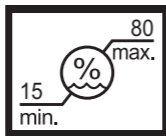


1 Place to Install



- 100-120 V: 60 Hz 1.0 A
- 220-240 V: 50/60 Hz 0.6 A



2



4. **THE**



1

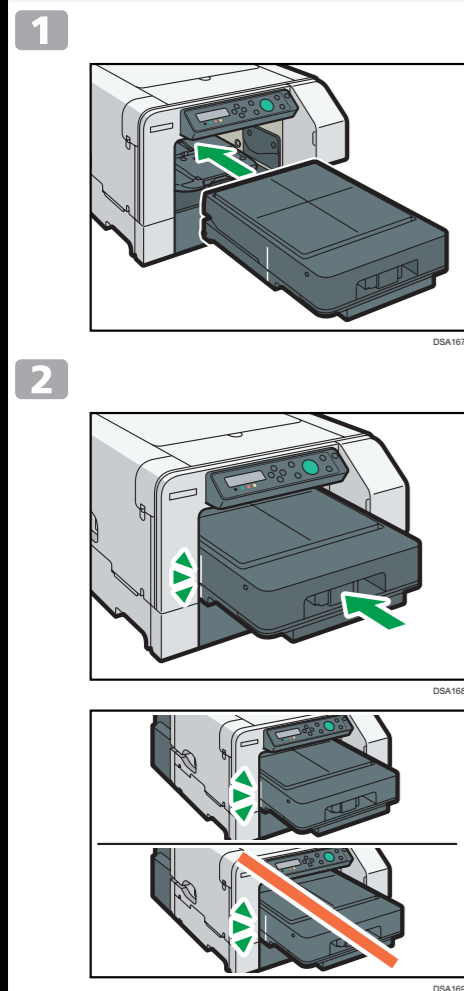


1

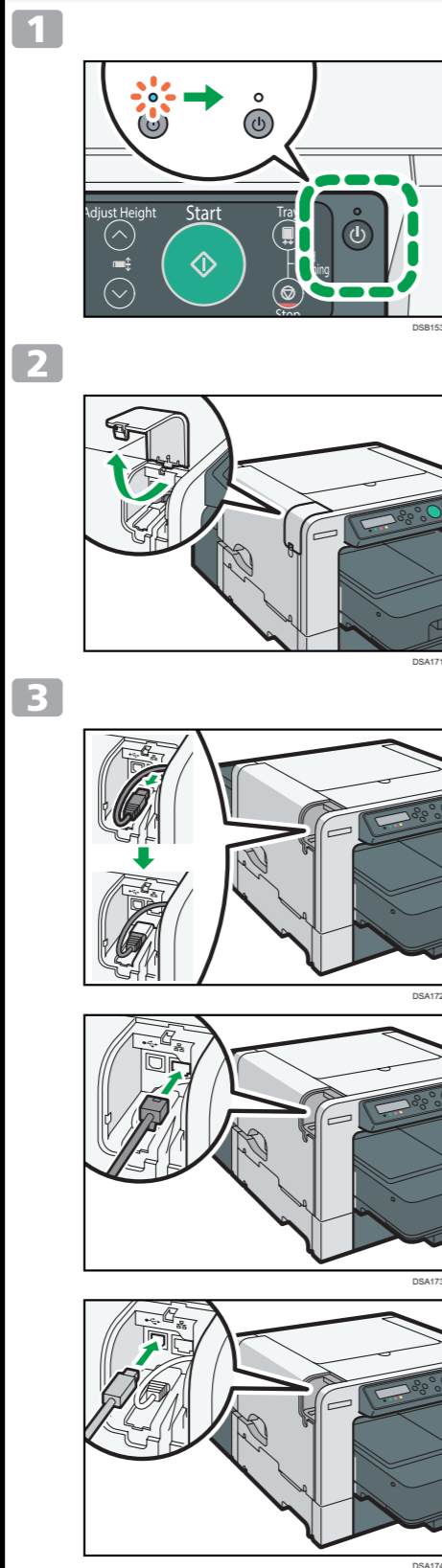


Do not remove the plug from the wall outlet while the ink is being fed.

5 Installing Tray (Cassette)



6 Connection



To use this machine in the network environment, make the initial setting.
[▼/Menu] key ▶ [Host Interface] ▶ [Network Setup]

7 Installing the Driver

For details about installing the printer driver and specifying network settings, see "Preparing for Printing", Operating Instructions.

