

About GelSprinter GX Series Firmware Updates

(Windows)

TABLE OF CONTENTS

1.	About Firmware Updates	2
2.	Operating Environment and Other Requirements	2
2.1.	Operating Environment	2
2.2.	Supported Operating Systems	2
2.3.	About Printer Drivers	2
3.	Update Cautions	3
3.1.	Caution 1	3
3.2.	Caution 2	3
3.3.	Caution 3	3
3.4.	Caution 4	3
3.5.	Caution 5	3
3.6.	Caution 6	3
4.	Disclaimer	3
5.	Firmware Update Operating Instructions	4
5.1.	Bidirectional-Enabled	5
5.2.	Bidirectional-Disabled	7
6.	Trademarks	10

1. About Firmware Updates

Updates allow GelSprinter GX e2600/GX e3300N/GX e3350N/GX e5550N/GX e7700N models to receive the latest firmware.

2. Operating Environment and Other Requirements

2.1. Operating Environment

If the printer is connected to computers by network peer-to-peer or directly via a single USB cable, successful updates are guaranteed.

2.2. Supported Operating Systems

1. Windows 2000
2. Windows XP
3. Windows XP (x64)
4. Windows Vista
5. Windows Vista (x64)
6. Windows 7
7. Windows 7 (x64)
8. Windows Server 2003
9. Windows Server 2003 (x64)
10. Windows Server 2008
11. Windows Server 2008 (x64)

You must login as an administrator or as a user with administrator privileges.

2.3. About Printer Drivers

Printing is possible provided the printer's driver is installed.

3. Update Cautions

This section describes several things you must check for to ensure successful updates.

You must read this section before performing updates.

* For more details about cautions, refer to "ReadMe.txt".

3.1. Caution 1.

Before performing updates, check your computer's power options: make sure [System Standby:] / [System hibernates:] is set to "Never".

To check your computer's Power Options under Windows XP (procedures for other operating systems will differ):

1. Click the [Start] menu.
2. Click [Control Panel].
3. Click [Power Options].
4. Select the [Power Schemes] tab (displayed by default).
5. Make sure [System standby:] / [System hibernates:] is set to "Never".

3.2. Caution 2.

During updates, make sure the printer's power is not turned off and the network or USB cable remains connected. Also, during updates, do not print any jobs or run applications that use the printer driver, Status Monitor, or SmartDeviceMonitor.

3.3. Caution 3.

If the printer's power is turned off or the USB or network cable is disconnected during updates, the update will fail and must be performed again.

3.4. Caution 4.

During updates, do not put the computer into [System standby:] / [System hibernates:] manually.

3.5. Caution 5.

If you want to use the SmartDeviceMonitor port to update the firmware over a network, be sure to uncheck the [Use Extended Features] check box of SmartDeviceMonitor for Client.

3.6. Caution 6.

Bidirectional communication is not available if you are running SmartDeviceMonitor port under a 64-bit operating system. If you are using a 64-bit operating system, see "5.2. Bidirectional-Disabled", and perform the update procedure.

4. Disclaimer

The manufacturer is not liable for any damages resulting from use or misuse of this software. Nor is the manufacturer liable for any damages resulting from use or misuse of this software with third parties.

5. Firmware Update Operating Instructions

These instructions explain how to update the firmware of the printer.

Before you start the update, make sure of the following:

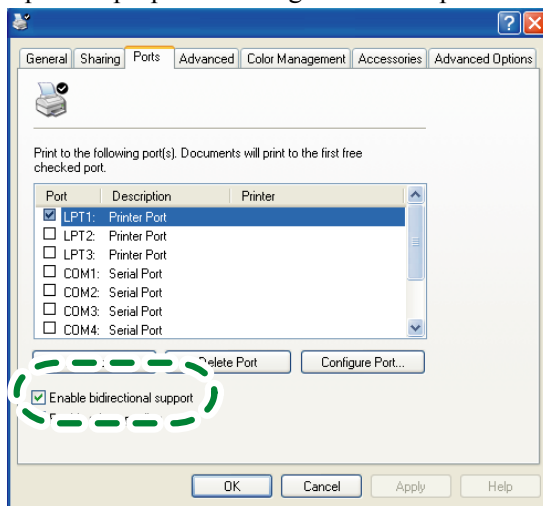
- The printer is in standby mode and the [Online] key is lit in blue.
- No applications are running on the computer.
- The printer is connected to the computer with a USB cable or via network peer-to-peer.

The following procedure uses Windows XP screenshots and is based on the GelSprinter GX e7700N model.

Note

Depending on the printer driver and its settings, update procedures might vary.

Open the properties dialog box for the printer in use and check the port status.



- If “bidirectional support” has been enabled in the printer properties dialog box:
 - ⇒ Update the firmware by following the update procedure shown in section 5.1.
 - If “bidirectional support” in the printer properties dialog box has been disabled:
 - ⇒ Update the firmware by following the update procedure shown in section 5.2.
- * We recommend you enable bidirectional support.

5.1. Bidirectional-Enabled

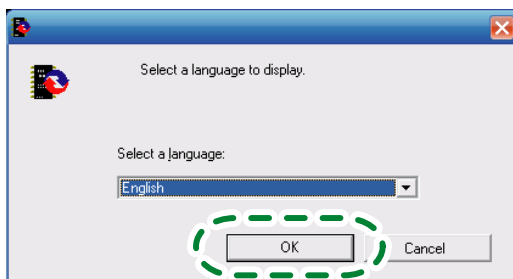
This section explains how to update the bidirectional-enabled printer driver.

1. Double-click [Product Name_FirmwareUpdater_VX_XX.exe] to start the update.

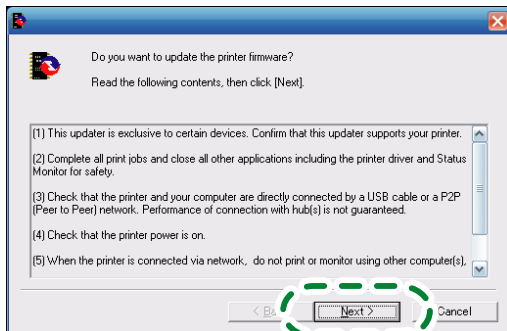
Note

Product Name represents the machine name; VX_XX, the version.

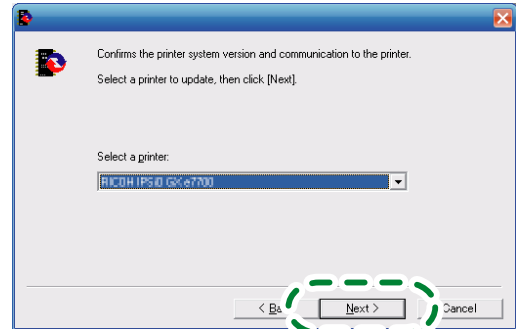
2. Select [English], and then click [OK].



3. The following screen appears. Check the displayed details, and then click [Next >].



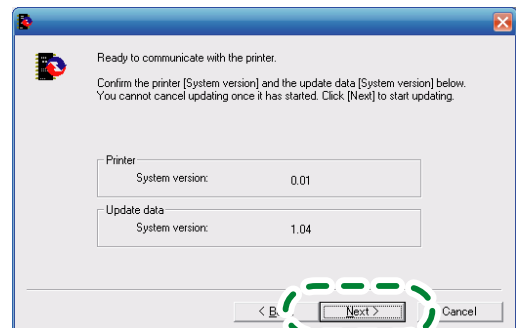
4. Select the printer name, and then click [Next >].



5. Check that the system version for [Update data] is later than the system version for [Printer], and then click [Next >].

Note

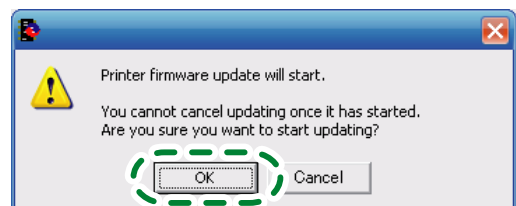
- The following screen is an example. The versions that actually appear may be different.



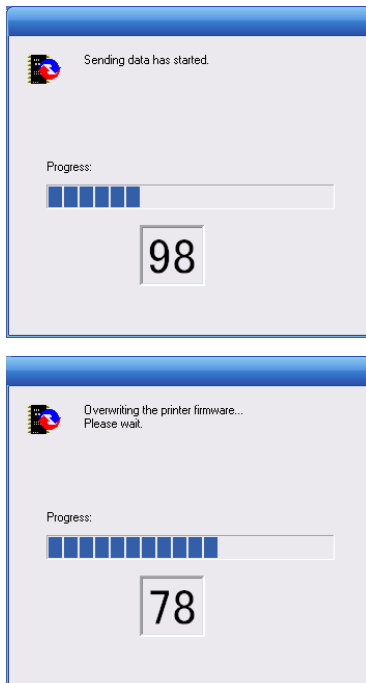
6. Click [OK].

Note

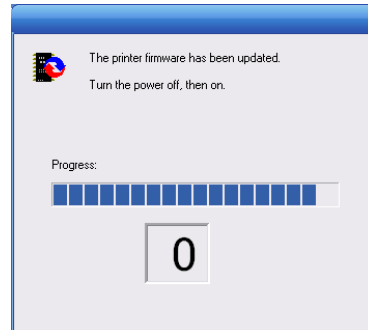
Do not switch the printer off while updating.



7. Updating starts.



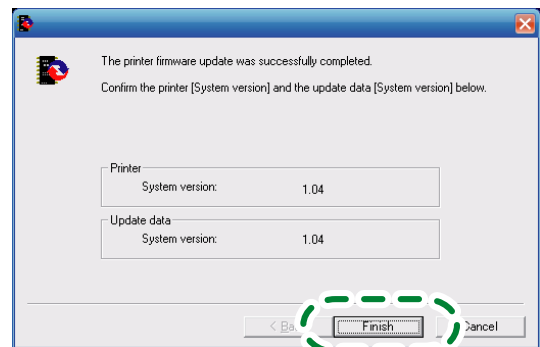
8. The printer is switched back on automatically, after the screen shown below appears.



9. After updating, check the version, and then click [Finish].

Note

The following screen is an example. The versions that actually appear may be different.



10. Updating is complete.

5.2. Bidirectional-Disabled

This section explains how to update the bidirectional-disabled printer driver.

To update the firmware when bidirectional communication is disabled, see 3. “Update Cautions”, and then check the following:

- You must be able to view the printer’s control panel.
 - ⇒ The procedure requires you to check the printer’s status on the control panel.
Make sure you are able to view the printer’s control panel when updating the firmware.
- Check the current firmware version and the firmware version you want to install.
 - ⇒ Take care to install only firmware versions that are later than the version that is already installed.

[How to check the current firmware version]

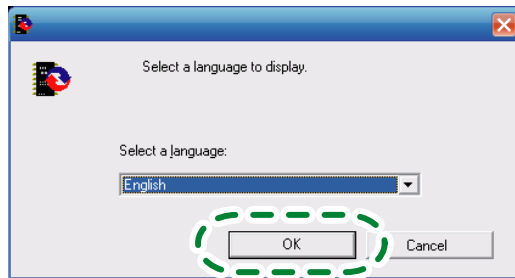
1. Press the [Menu] key on the printer’s control panel.
2. Select [List/Test Print], and then click the [Enter] key.
3. Select [Config. Page], and then click the [Enter] key.
4. The System Summary is printed.
5. Check the version number under “System Version”.

1. Double-click [Product Name_FirmwareUpdater_VX_XX.exe] to start the update.

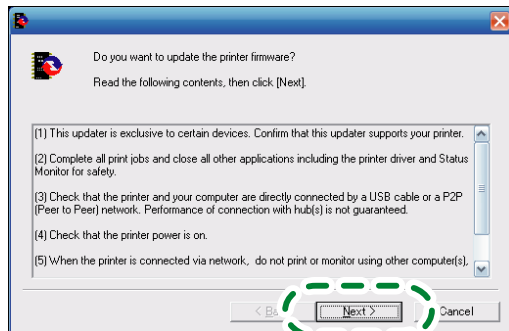
Note

Product Name represents the machine name; VX_XX, the version.

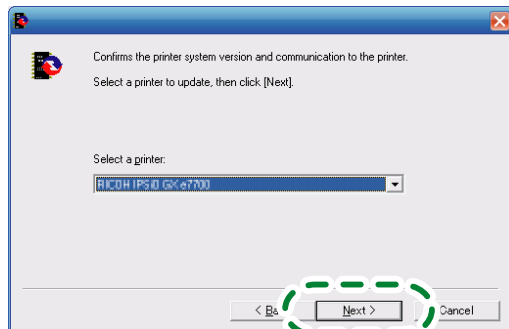
2. Select [English], and then click [OK].



3. The following screen appears. Check the displayed details, and then click [Next >].



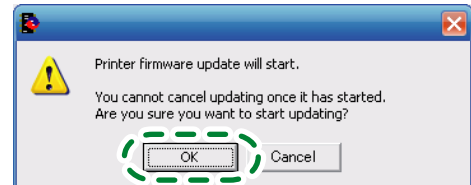
4. Select the printer name, and then click [Next >].



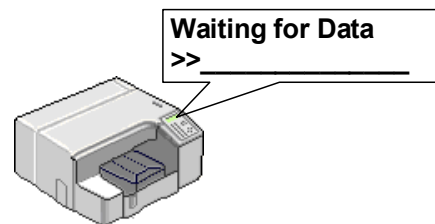
5. After checking the following, click [OK].

- A functional printer has been selected.
- The printer is available and not currently inactive.
- The printer is not offline.
- There are no remaining print jobs displayed on the task bar.

* Check the control panel for the next step.



6. Check that the message “Waiting for Data” is displayed on the printer’s control panel.



7. Click [OK].

* Check the control panel for the next step.

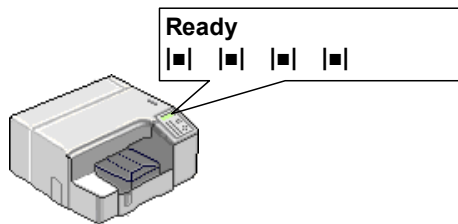


8. Updating starts.

Check the update progress displayed on the LCD of the printer's control panel.

The update progress should be as shown in the diagram on the right.

When the "Ready" message appears, the printer is ready to print.



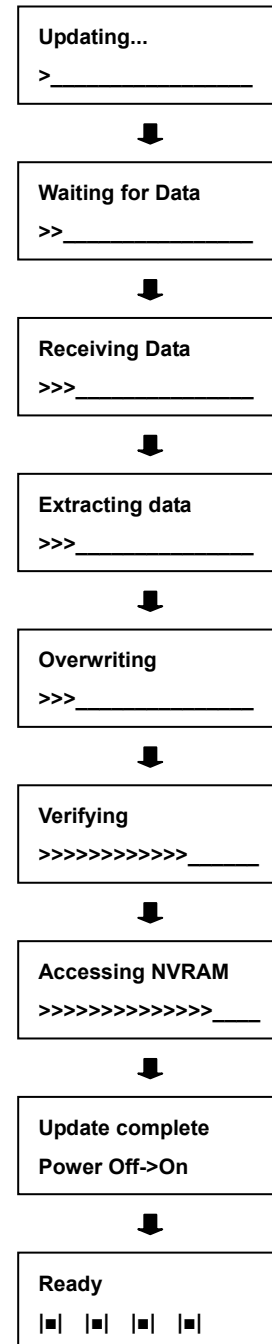
9. After the update, check that the new firmware version is displayed.

Use the following procedure to check the version of your printer.

1. Press the [Menu] key on the printer's control panel.
2. Select [List/Test Print], and then click the [Enter] key.
3. Execute [Config. Page], and then click the [Enter] key.
4. The System Summary is printed.
5. Check the version number under "System Version".

10. The update is complete.

* The progress of the update is displayed on the LCD of the printer's control panel in the following order.



6. Trademarks

Adobe® and Acrobat® are either registered trademarks or trademarks of Adobe Systems Incorporated in the United States and/or other countries.

Pentium is a registered trademark of Intel Corporation.

Netscape is a registered trademark of Netscape Communication Corporation in the U.S. and/or other countries.

Macromedia and Flash are either registered trademarks or trademarks of Macromedia, Inc. in the U.S. and/or other countries.

Microsoft, Windows are either registered trademarks or trademarks of Microsoft Corporation in the United States and/or other countries.

Other product names used herein are for identification purposes only and might be trademarks of their respective companies.

We disclaim any and all rights to those marks.

- The product names of Windows 2000 are as follows:

Microsoft® Windows® 2000 Professional

Microsoft® Windows® 2000 Server

Microsoft® Windows® 2000 Advanced Server

- The product names of Windows XP are as follows:

Microsoft® Windows® XP Home Edition

Microsoft® Windows® XP Professional

Microsoft® Windows® XP Media Center Edition

Microsoft® Windows® XP Tablet PC Edition

- The product names of Windows Vista are as follows:

Microsoft® Windows Vista® Home Basic

Microsoft® Windows Vista® Home Premium

Microsoft® Windows Vista® Business

Microsoft® Windows Vista® Ultimate

Microsoft® Windows Vista® Enterprise

- The product names of Windows 7 are as follows:

Microsoft® Windows® 7 Home Premium

Microsoft® Windows® 7 Professional

Microsoft® Windows® 7 Enterprise

Microsoft® Windows® 7 Ultimate

- The product names of Windows Server 2003 are as follows:

Microsoft® Windows Server® 2003 Standard Edition

Microsoft® Windows Server® 2003 Enterprise Edition

Microsoft® Windows Server® 2003 Web Edition

Microsoft® Windows Server® 2003 Datacenter Edition

- The product names of Windows Server 2008 are as follows:

Microsoft® Windows Server® 2008 Standard

Microsoft® Windows Server® 2008 Enterprise

Microsoft® Windows Server® 2008 Datacenter

Copyright © 2009, 2010

EN



EN



J017-6629A