

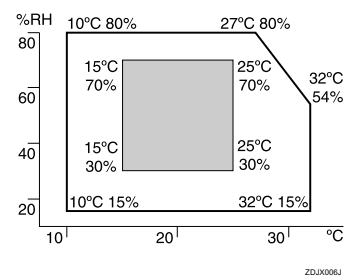


## 1 Checking the Computer and Installation Area

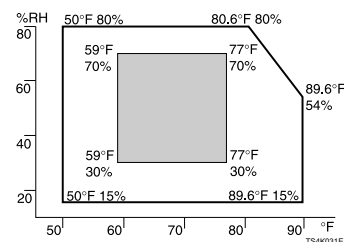
### 1 The area where the printer is to be placed.

Choose a flat, stable area to install the printer. Make sure that all four printer legs make firm contact with the surface beneath.

- The surface should be level within two degrees, left to right and front to back.
- To prevent condensation, install the printer in an area where temperature and humidity conditions do not exceed those indicated in the diagram below.
- The printer may cease to print if these limitations are exceeded.



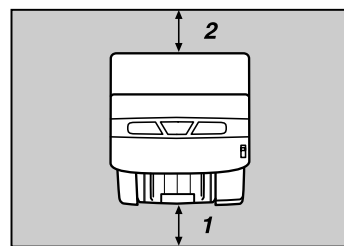
ZD3X006J



T34K031E

- White area: Permissible Range
- Gray area: Recommended Range

- The diagram below shows the ideal clearance for loading paper, replacing print cartridges, and removing jammed paper.



AKR127S

1. At least 19 cm (7.5 inches)
2. At least 12 cm (4.8 inches)

If you attach the multi bypass tray (Option), provide additional clearance of 23 cm (9.1 inches).

### Important

- To avoid malfunctions, position the printer away from the following:
  - direct sunlight
  - flow of air from air conditioners or heaters
  - radios, televisions, or other electronic devices areas of high/low temperature and high/low moisture
  - humidifying appliances
  - oil stoves and ammonia-emitting appliances (such as diazo copiers)

## 2 Check the power source.

The power requirements of this printer are as follows: 220-240V, 50/60Hz, 0.5A or more.

### Warning

- Keep the machine away from humidity and dust. Otherwise a fire or an electric shock might occur.
- Place the machine on a strong and level surface. Otherwise, the machine might fall and cause personal injury.
- If you use the machine in a confined space, confirm that there is a continuous flow of air.

### Warning

- Only connect the machine to the power source described on this sheet.
- Avoid multi-wiring.
- Connect the power cord directly into a wall outlet and never use an extension cord.
- Do not damage, break or make any modifications to the power cord. Do not place heavy objects on it. Do not pull it hard nor bend it more than necessary. These actions could cause an electric shock or fire.

### Warning

- Do not plug or unplug the power cord with your hands wet. Otherwise, an electric shock might occur.

### Warning

- Make sure the wall outlet is near the machine and freely accessible so that in event of an emergency it can be unplugged easily.

## 3 Checking the Computer to be Connected.

To use this printer, a computer must have an operating environment that meets the following specifications:

- MS-DOS/V compatible with USB interface
- Operating system: Windows 98/Me/2000/XP, Windows Server 2003, Windows NT 4.0 or later
- 80-100 MB (minimum) available hard disk space

### Limitation

- For Windows NT 4.0, IE 4.0 or later is required.
- Windows NT 4.0 do not support USB connection with your printer. Connect your printer via a network in this case.
- USB connection is supported by Windows 98/Me/2000/XP and Windows Server 2003.
- USB connection speed under Windows 98/Me is USB 1.1 equivalent.

### Note

- To print at the highest quality, the following memory capacities are required.
  - Windows 98/Me (64MB or more recommended)
  - Windows 2000/XP (128MB or more recommended)
  - Windows Server 2003 (256MB or more recommended)
  - Windows NT 4.0 (64MB or more recommended)\*1
- \*1 We recommend at least 128 MB of memory for high quality printing on glossy paper.
- The machine does not support Windows XP 64-Bit Edition or Windows Server 2003 64-Bit Edition.

## 2 Checking the Supplied Items and Unpacking the Printer

Open the box and take out all supplied items. Check that all the following items are present:

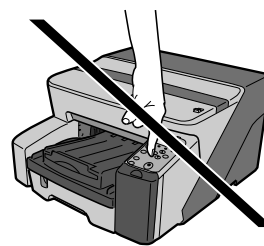
- Power Cord
  - Starter cartridge - Cyan
  - Starter cartridge - Magenta
  - Starter cartridge - Yellow
  - Starter cartridge - Black
  - ☑ Quick Installation Guide (this manual)
  - Setup Handbook
  - "Driver, Manual & Utility" CD-ROM
- User Guide is included on this.

### Note

- USB cable and LAN cables are not supplied.

### Important

- Do not turn the printer on until you have read how to do so.



AKR006S

### 1 Take off the protective covering.

### 2 Remove the orange tape from the printer body.

### Important

- Remove all the orange tape, except the tape around the power cord.

## 3 Attaching the Network Interface Board Type GX2 (Option)

### Important

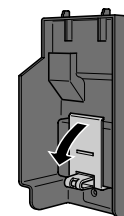
- Before touching the network interface board, ground yourself by touching something metal to discharge any static electricity.
- Do not subject the network interface board to impact or other physical stress.

### 1 Check the product and its supplied components.

### 2 Check that the power cord of the printer is not plugged in.

### 3 Using a coin, turn the network interface board cover screw counterclockwise, and then remove the cover.

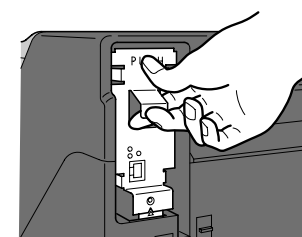
### 4 Remove the spacer in the network interface board cover.



AKR130S

The removed spacer will not be used again.

### 5 Align network interface board notch with the triangular mark on the printer, and then push in the network interface board in by pressing the part marked "PUSH".



AKR131S

### 6 Reattach the network interface board cover to the printer, and then fasten it using the screw.

### Note

- Be sure to push the network interface board fully into the printer.
- If the network interface board is not installed properly, repeat the entire installation procedure. If you cannot install it properly even after attempting re-installation, contact your sales or service representative.

Dispose of the removed component as general plastic waste or hand it in for collection.

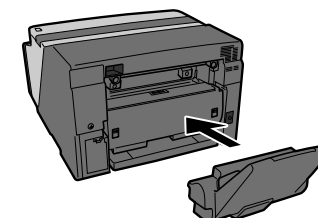
## 4 Attaching the Multi Bypass Tray Type BY1000 (Option)

### 1 Check that the power cord of the printer is not plugged in.

### 2 Take the multi bypass tray out of its box.

### 3 Remove the orange tape from multi bypass tray.

### 4 Attach the multi bypass tray by pushing it in until it clicks.



AKR001S

### 5 Extend the multi bypass tray.

## 5 Installing the Print Cartridges

### Caution

- If ink comes into contact with your eyes, rinse immediately in running water. For other symptoms, consult a doctor.
- If ink is ingested, induce vomiting by drinking a strong saline solution. Consult a doctor immediately.
- If your skin comes into contact with ink, wash the affected area thoroughly with soap and water.

### Caution

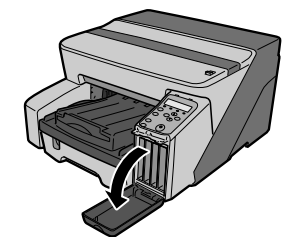
- Keep the ink or ink container out of reach of children.

### Important

- Print cartridges and supplies comply with the manufacturer's safety specifications. To ensure safety and reliability, use genuine print cartridges and supplies.

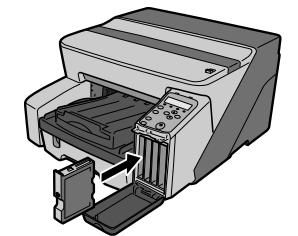
### 1 Unpack the print cartridges.

### 2 Open the Right Front Cover.



AKR003S

### 3 Check the cartridge's orientation, and then gently insert it.



AKR004S

### Important

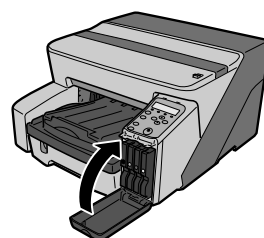
- Take care to insert the colors in the right order.
- Take care not to touch the cartridge chip.

### 4 Push in the cartridge using the PUSH area.

### 5 Repeat steps 3 to 4 for all four cartridges.



## 6 Close the Right Front Cover.



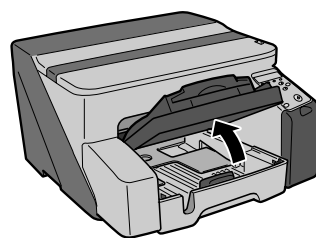
## 6 Loading Paper

### Loading Paper in the Paper Feed Tray

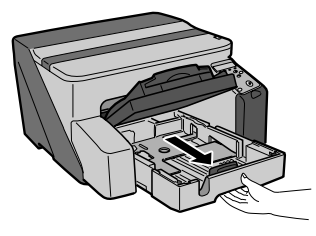
#### Note

- A4/Letter size paper is loaded here.
- Load A4/Letter size paper in (portrait) orientation.

### 1 Lift the output tray.



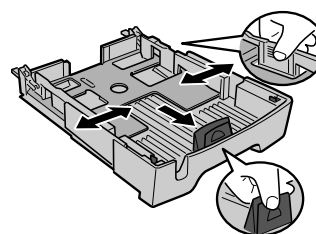
### 2 Pull out the paper feed tray.



#### Note

- Pull tray completely out. Take care not to drop it.

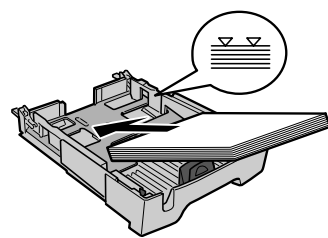
### 3 Squeeze the paper guide release, and then slide the side paper guides into position according to the paper size.



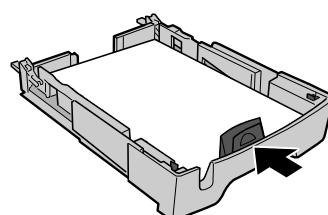
#### Note

- Before loading paper, make sure to squeeze the front end paper guide and slide it to an open position.

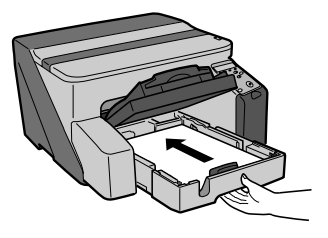
### 4 Load paper with the print side face down but not over the limit mark.



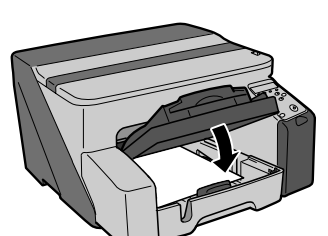
### 5 Squeeze the front end paper guide, and then slide it to meet the edge of the paper.



### 6 Hold both sides of tray, and push it gently in until it stops.



### 7 Lower the output tray.



## 7 Plugging in the Power Cord

#### Warning

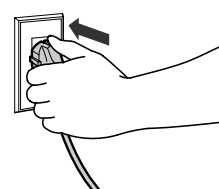
- Only connect the machine to the power source described on this sheet.
- Avoid multi-wiring.
- Connect the power cord directly into a wall outlet and never use an extension cord.
- Do not damage, break or make any modifications to the power cord. Do not place heavy objects on it. Do not pull it hard nor bend it more than necessary. These actions could cause an electric shock or fire.

#### Warning

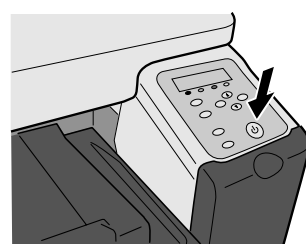
- Do not plug or unplug the power cord with your hands wet. Otherwise, an electric shock might occur.

### 1 Remove the orange tape from around the power cord.

### 2 Plug the power cord fully into the machine and the wall outlet.



### 3 Press the [Power] key.



The printer starts feeding ink into its print-heads (**taking approximately 6 minutes**).

Make sure the "Ready" message is displayed on the control panel.

#### Important

- Do not switch off the power of the printer during this period. Take care that the plug is not unplugged from the wall outlet.
- You might hear a clicking sound while the print heads are filling. This is not a malfunction. It will stop after a while.
- When ink feed is complete, the [Power] key stops blinking and remains lit.

### 4 Print the configuration Page.

### 5 Press the [Menu] key.

The [Menu] screen appears.

### 6 Press the [▲] or [▼] key to display [List/Test Print], and then press the [#Enter].

### 7 Press the [▲] or [▼] key to display [Config. Page], and then press the [#Enter].

The configuration page is printed.

### 8 Switch the printer off.

For USB connection, go to 8, "Installing the Printer Driver (USB)".

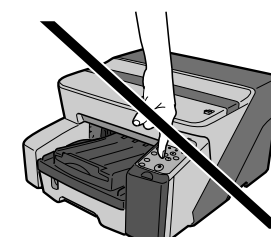
For network connection, switch the printer back on, and then go to 9, "Installing the Printer Driver (Network Interface Board)".

## 8 Installing the Printer Driver (USB)

### Connecting the Printer via USB

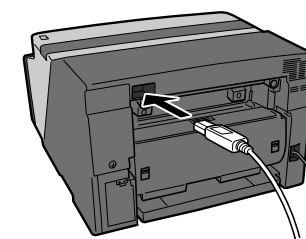
#### Important

- Do not turn the printer on until you have read how to do so.



### 1 Turn on the power of the computer, and start Windows.

### 2 Remove the seal on the USB slot located on the rear of the printer, and then insert the USB cable's hexagonal (type B) plug firmly into the slot.



#### Note

- Insert the USB cable's plug with the USB mark facing down.
- Make sure that the USB cable is fully inserted.
- Make sure the USB cable is connected properly, especially if the multi bypass tray is attached to the printer, because the tray makes connecting the cable difficult.

### 3 Insert the USB cable's rectangular (type A) plug firmly into the computer's USB slot.

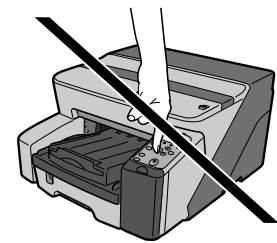
Go to sheet 2/2.

Quick Install for USB

Follow the procedure below to install the printer driver and User Guide.

Important

- Do not turn the printer on until you have read how to do so.



AKR0065

- To install under Windows 2000/XP or Windows Server 2004 you must log on as a user with administrator rights.

Note

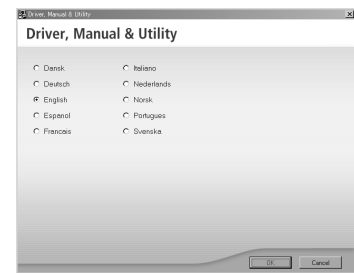
- The following explanation uses Windows 98 as an example. Procedures under other operating systems may differ.
- Screens vary according to the operating environment.
- For details about driver installation under Windows NT 4.0, see "Preparing for Printing", *User Guide*.

1 Start Windows, and insert the provided "Driver, Manual & Utility" CD-ROM into the CD-ROM drive.

Note

- Quit all other applications currently running.
- When you start Windows, the Add New Hardware Wizard may appear. If this happens, click [Cancel]. Check again that the power is off, and then proceed to step 2.
- After inserting the CD-ROM, the [Driver, Manual & Utility] dialog box appears. If it does not, doubleclick the CD-ROM drive icon under [My Computer] or [Explorer], and then double-click [SETUP.EXE].

2 Select a language for the interface, and then click [OK].

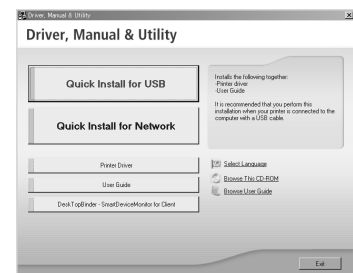


The following languages are available:

Dansk (Danish), Deutsch (German), English (English), Espanol (Spanish), Francais (French), Italiano (Italian), Nederlands (Dutch), Norsk (Norwegian), Portugues (Portuguese), Svenska (Swedish)

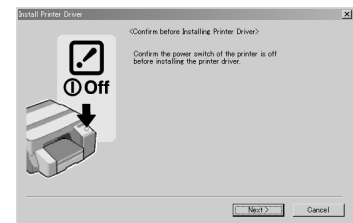
The default interface language is English.

3 Click [Quick Install for USB].

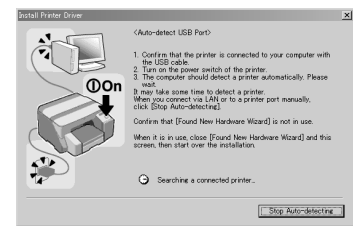


4 Read the license agreement, click [I accept the agreement.], and then click [Next >].

5 Check again that the power of the printer is off, and then click [Next >].



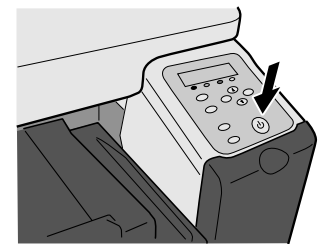
Check that the dialog box below appears.



Note

- If the [Software Installation] dialog box appears, see "Notes on the Installation".

6 Make sure that the computer and printer are properly connected, and then press the [Power] key.



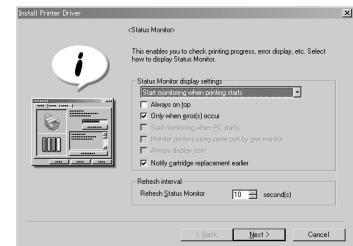
AKS0085

Installation starts.

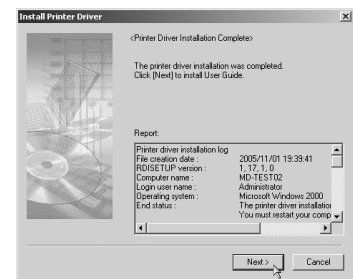
Note

- If the connection to the computer was not confirmed, make the port settings again after installation is complete. See "The port connection is not properly set.", *Setup Handbook*.
- If the message "Digital Signature Not Found" or the [Found New Hardware Wizard] or [Hardware Installation] dialog box appears, see "Notes on the Installation".

7 Select whether or not to open the Printer Status monitor automatically, and then click [Next >].

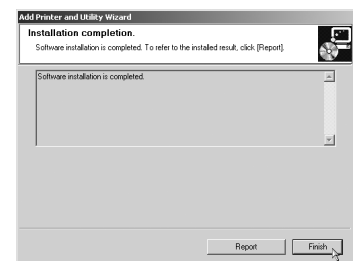


8 Confirm the installation result, and then click [Next >].



Install User Guide.

9 Click [Finish].



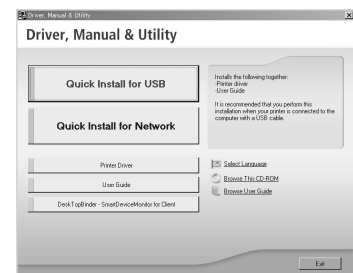
If the message prompting you to restart the computer appears, restart the computer.

The printer driver and User Guide are now installed.

Note

- When installation is complete, User Guide icon appears on your desktop.
- Confirm the printer driver is correctly installed by checking that the [Power] key of the printer is lit and performing a test print. See "Test Print", *Setup Handbook*.

10 Click [Exit].



Notes on the Installation

If the message "Digital Signature Not Found" or the [Software Installation] or [Hardware Installation] dialog box appears

- Click [Yes] or [Continue Anyway] to continue the installation.

If the [Found New Hardware Wizard] dialog box appears

- Click [Install from a list or specific location (Advanced)], and then click [Next >].
- Click [Include this location in the search], and then click [Browse].
- Browse to find "XXXXXX\ENGLISH\DISK1" on the CD-ROM, and then click [OK]. Select the folder appropriate for your operating system.

Important

- Be sure to clear the [Search remove media (floppy, CD-ROM...)] check box.

9 Installing the Printer Driver (Network Interface Board)

Specifying Settings on the Control Panel

Make the following network settings according to the network interface you are using.

If connecting the printer via the network, make the required network environment settings.

The following table shows the control panel settings and their default values. These items appear in the [Host Interface] menu.

| Setting Name      | Value         |
|-------------------|---------------|
| 1.DHCP            | On            |
| 2.IP Address      | 0.0.0.0       |
| 3.Subnet Mask     | 0.0.0.0       |
| 4.Gateway Address | 0.0.0.0       |
| 5.Frame Type (NW) | Auto Select   |
| 6.Active Protocol | TCP/IP Active |
|                   | SMB Active    |
| 7.Ethernet Speed  | Auto Select   |

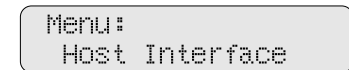
1 Press the [Menu] key.



AKR0025

The [Menu] screen appears on the display.

2 Press the [▲] or [▼] key to display [Host Interface] menu, and then press the [#Enter].

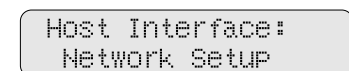


The interface setting menu appears.

3 Press the [▲] or [▼] key to display [Network Setup], and then press the [#Enter].

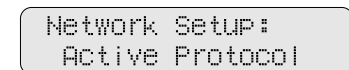
Check the default for each setting using the menu shown at the beginning of this section.

It is recommended that unused protocols be set to "Not Active".



The network setup menu appears.

4 Press the [▲] or [▼] key to display [Active Protocol], and then press the [#Enter].



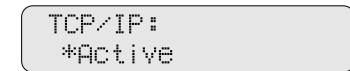
The active protocol settings screen appears.

5 Press the [▲] or [▼] key to select Active Protocol, and then press the [#Enter].



The following example explains activating TCP/IP.

6 Press the [▲] or [▼] key to select [Active] or [Not Active], and then press the [#Enter].



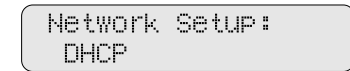
After the settings are made, about two seconds later, the screen returns to the active protocol menu.

7 Set other protocols you need to set in the same way.

8 Press the [Escape] key, the screen returns to the network setup menu.

The network settings screen appears.

9 When using TCP/IP and DHCP, specify DHCP. To do this, press the [▲] or [▼] key to display "DHCP", and then press the [#Enter].

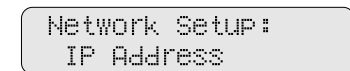


10 Press the [▲] or [▼] key to display [On], and then press the [#Enter].



After about two seconds, the display returns to the network setup menu.

11 If you use TCP/IP, assign the IP address to the printer. Press the [▲] or [▼] key to display [IP Address], and then press the [#Enter].



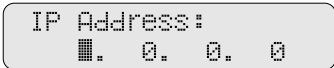
The current IP address appears on the display.

Note

- To get the IP address for the printer, contact your network administrator.
- If "DHCP" is set to "On", the "IP Address" setting does not appear in the [Host Interface] menu.



**12** Press the [▲] or [▼] key to enter the left most entry field of the IP address, and then press the [#Enter].



- Note**
- The value moves by 10 if the [▲] or [▼] key is kept pressed.
  - When the [#Enter] key is pressed, the cursor moves to the next field.

**13** Press the [#Enter].

As the specified value is entered in each field, the cursor moves to the next field.



**14** Repeating the steps, specify values in all fields, and then press the [#Enter].  
To return to the previous field, press the [Escape] key.

**15** When using TCP/IP, specify "Subnet Mask" and "Gateway Address" in the same way as when specifying the IP address.

**16** After you have made all the settings, press the [Online] key.  
The specified settings are set and the initial printer screen reappears.



Next, print the configuration page and check the specified settings.

**17** Press the [Menu] key.

The [Menu] screen appears.

**18** Press the [▲] or [▼] key to display [List/Test Print], and then press the [#Enter].

**19** Press the [▲] or [▼] key to display [Config. Page], and then press the [#Enter].

The configuration page is printed.  
Make sure that the IP address is correctly set.

**20** Press the [Online] key.

The initial screen appears.

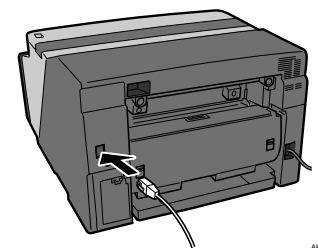
## Connecting the Printer via the Network

Be sure to install necessary network equipment, such as a hub, before connecting the Ethernet cable to the printer.

You can connect a 10BASE-T or 100BASE-TX cable to the printer.

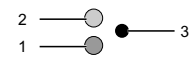
- Important**
- Ethernet cable is not supplied with this machine. Select your cable according to the network environment.

**1** Plug the Ethernet cable into the Ethernet port on the rear of the printer.



**2** Connect the other end of the cable to the printer's network, such as to a hub.

Check the LEDs on the Ethernet port



- 1 Indicator (green)  
Remains green when the machine is properly connected to the network.
- 2 Indicator (red)  
Turns red when 100 BASE-TX is operating. Turns off when 10 BASE-T is operating.
3. [Job Reset] key  
If you press this, the network interface board is initialized and rebooted.

- Reference**
- Before you can use the network interface board, you must set it up from the printer's control panel. For details, see "Specifying Settings on the Control Panel".

## Quick Install for Network

Follow the procedure below to install the printer driver, User Guide, and SmartDeviceMonitor.

- Important**
- To install under Windows 2000/XP, Windows Server 2003, Windows NT 4.0, you must log on as a user with administrator rights.

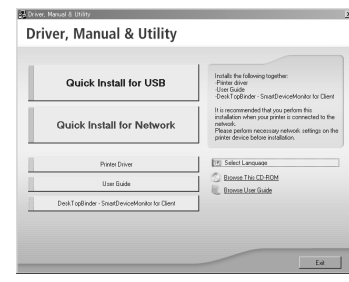
- Note**
- The following explanation uses Windows 2000 as an example. Procedures under other operating systems may differ.
  - Screens vary according to the operating environment.
  - For details about installing only the printer driver, see "Preparing for Printing", *User Guide*.
  - For details about using the printer as a shared network printer, see "Sharing the Printer", *User Guide*.

**1** Start Windows, and insert the provided "Driver, Manual & Utility" CD-ROM into the CD-ROM drive.

- Note**
- Quit all other applications currently running.
  - When you start Windows, the Add New Hardware Wizard may appear. If this happens, click [Cancel]. Check again that the power is off, and then proceed to step 2.
  - After inserting the CD-ROM, the [Driver, Manual & Utility] dialog box appears. If it does not, doubleclick the CD-ROM drive icon under [My Computer] or [Explorer], and then double-click [SETUP.EXE].

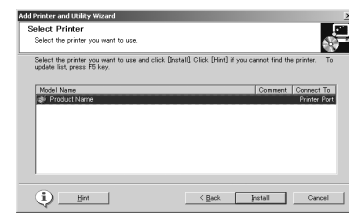
**2** Select a language for the interface, and then click [OK].

**3** Click [Quick Install for Network].



**4** Read the license agreement, click [I accept the agreement.], and then click [Next >].

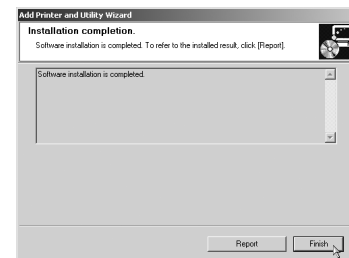
**5** The search for the network printer starts. If the selection dialog box appears, select the model of printer you want to use, and then click [Install].



Installation starts

- Note**
- If the [Software Installation] dialog box appears, see "Notes on the Installation".
  - If the printer cannot be found and only "Printer Port" appears in the printer selection dialog box, either the printer's IP address has not been specified or the computer and printer are not on the same network segment. Before installing the software, check the printer's IP address and the network topology. Otherwise, select "Printer Port" in the dialog box, and then install the printer driver. If you do this, SmartDeviceMonitor for Client will not be simultaneously installed, so install it afterwards, and then configure the port.
  - If the message "Digital Signature Not Found" or the [Found New Hardware Wizard] or [Hardware Installation] dialog box appears, see "Notes on the Installation".

**6** Click [Finish].

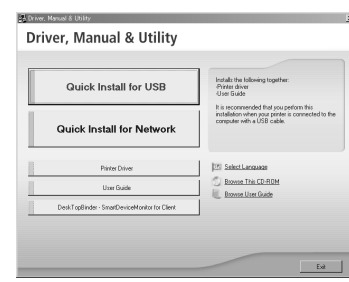


If the message prompting you to restart the computer appears, restart the computer.

The printer driver and User Guide are now installed.

- Note**
- When installation is complete, User Guide icon appears on your desktop.
  - Confirm the printer driver is correctly installed by checking that the [Power] key of the printer is lit and performing a test print. See "Test Print", Setup Handbook.

**7** Click [Exit].



## Notes on the Installation

- Note**
- The following procedures are explained using Windows XP dialog boxes. Procedures under other operating systems may differ.

If the message "Digital Signature Not Found" or the [Software Installation] or [Hardware Installation] dialog box appears

1. Click [Yes] or [Continue Anyway] to continue the installation.

If the [Found New Hardware Wizard] dialog box appears

1. Click [Install from a list or specific location (Advanced)], and then click [Next >].
2. Click [Include this location in the search], and then click [Browse].
3. Browse to find "\\XXXX\\ENGLISH\\DISK1" on the CD-ROM, and then click [OK]. Select the folder appropriate for your operating system.

- Important**
- Be sure to clear the [Search remove media (floppy, CD-ROM...)] check box.