

## **About GelSprinter GX Series Firmware Updates**

### **TABLE OF CONTENTS**

1.	About Firmware Updates .....	2
2.	Operating Environment and Other Requirements .....	2
2.1.	Operating Environment .....	2
2.2.	Supported Operating Systems .....	2
2.3.	About Printer Drivers .....	2
3.	Update Cautions .....	3
3.1.	Caution 1 .....	3
3.2.	Caution 2 .....	3
3.3.	Caution 3 .....	3
3.4.	Caution 4 .....	3
3.5.	Caution 5 .....	3
3.6.	Caution 6 .....	3
4.	Disclaimer .....	3
5.	Firmware Update Operating Instructions .....	4
5.1.	For Users of the RPCS Raster Driver (Bidirectional-Enabled) .....	5
5.2.	For Users of the RPCS Raster (Bidirectional-Disabled) or PCL Driver .....	7
6.	Trademarks .....	10

## **1. About Firmware Updates**

Updates allow GelSprinter GX series models to receive the latest firmware.

## **2. Operating Environment and Other Requirements**

### **2.1. Operating Environment**

If the printer is connected to computers by network peer-to-peer or directly via a single USB cable, successful updates are guaranteed.

### **2.2. Supported Operating Systems**

1. Windows 2000
2. Windows XP
3. Windows XP (x64)
4. Windows Vista
5. Windows Vista (x64)
6. Windows Server 2003
7. Windows Server 2003 (x64)
8. Windows Server 2008
9. Windows Server 2008 (x64)

You must login as an administrator or as a user with administrator privileges.

### **2.3. About Printer Drivers**

Printing is possible provided the printer's driver is installed.

### **3. Update Cautions**

This section describes several things you must check for to ensure successful updates.

You must read this section before performing updates.

\* For more details about cautions, refer to "ReadMe.txt".

#### **3.1. Caution 1.**

Before performing updates, check your computer's power options: make sure [System Standby:] / [System hibernates:] is set to "Never".

To check your computer's Power Options under Windows XP (procedures for other operating systems will differ):

1. Click the [Start] menu.
2. Point to [Settings], and then click [Control Panel].
3. Click [Power Options].
4. Select the [Power Schemes] tab (displayed by default).
5. Make sure [System standby:] / [System hibernates:] is set to "Never".

#### **3.2. Caution 2.**

During updates, make sure the printer's power is not turned off and the network or USB cable remains connected. Also, during updates, do not print any jobs or run applications that use the printer driver, Status Monitor, or SmartDeviceMonitor.

#### **3.3. Caution 3.**

If the printer's power is turned off or the USB or network cable is disconnected during updates, the update will fail and must be performed again.

#### **3.4. Caution 4.**

During updates, do not put the computer into [System standby:] / [System hibernates:] manually.

#### **3.5. Caution 5.**

If you want to use the SmartDeviceMonitor port to update the firmware over a network, be sure to uncheck the [Use Extended Features] check box of SmartDeviceMonitor for Client.

#### **3.6. Caution 6.**

Bidirectional communication is not available if you are running SmartDeviceMonitor port under a 64-bit operating system. If you are using a 64-bit operating system, see "5.2. For Users of the RPCS Raster (Bidirectional-Disabled) or PCL Driver", and perform the update procedure.

### **4. Disclaimer**

The manufacturer is not liable for any damages resulting from use or misuse of this software. Nor is the manufacturer liable for any damages resulting from use or misuse of this software with third parties.

## 5. Firmware Update Operating Instructions

These instructions explain how to update the firmware of the printer.

Before you start the update, make sure of the following:

- The printer is in standby mode and the [Power] key is lit in green.
- No applications are running on the computer.
- The printer is connected to the computer with a USB cable or via network peer-to-peer.

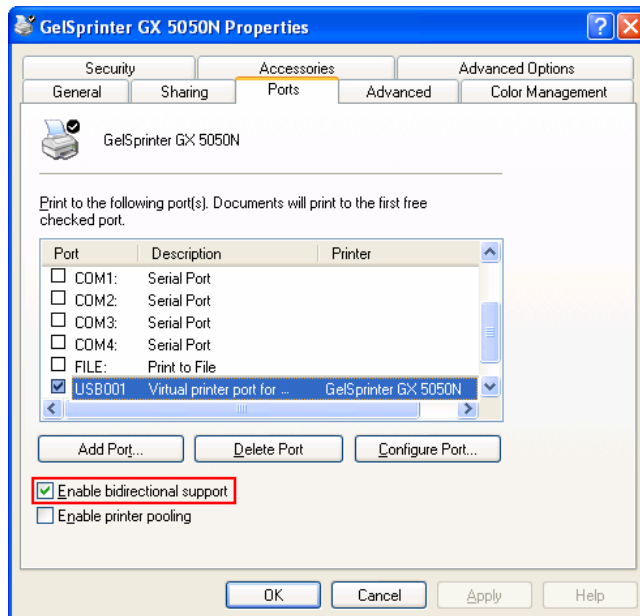
The following procedure uses Windows XP screenshots and is based on the GelSprinter GX 5050N model.

### Note

Depending on the printer driver and its settings, update procedures might vary.

- If the RPCS Raster Driver is Installed:

Open the properties dialog box for the printer in use and check the port status.



- If “bidirectional support” has been enabled in the printer properties dialog box:  
⇒ Update the firmware by following the update procedure shown in section 5.1.
  - If “bidirectional support” in the printer properties dialog box has been disabled:  
⇒ Update the firmware by following the update procedure shown in section 5.2.
  - \* We recommend you enable bidirectional support.
- 
- If the PCL driver has been installed:  
⇒ Update the firmware by following the update procedure shown in section 5.2.

### 5.1. For Users of the RPCS Raster Driver (Bidirectional-Enabled)

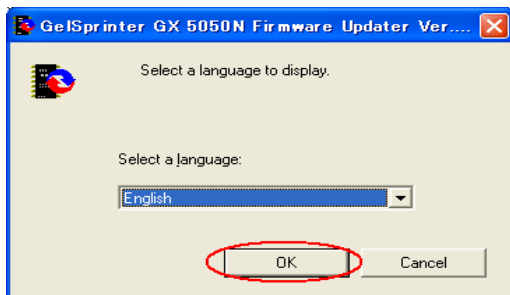
This section explains how to update the bidirectional-enabled RPCS raster printer driver.

1. Double-click [Product Name\_FirmwareUpdater\_VX\_XX.exe] to start the update.

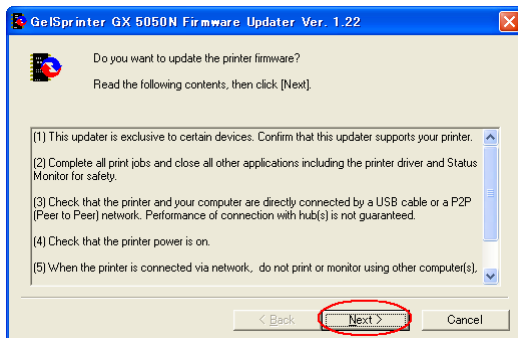
#### Note

Product Name represents the machine name; VX\_XX, the version.

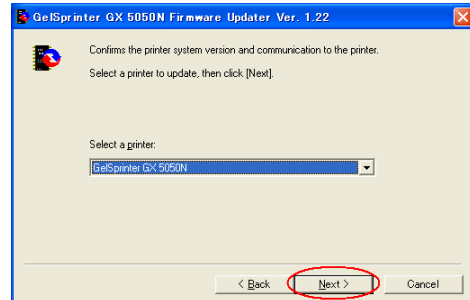
2. Select [English], and then click [OK].



3. The following screen appears. Check the displayed details, and then click [Next >].



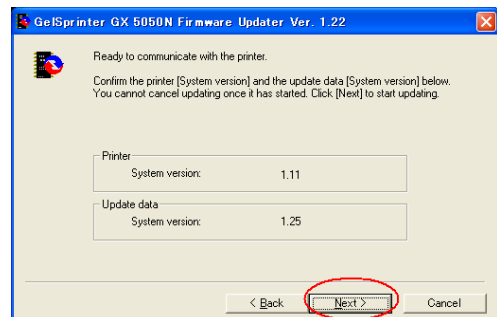
4. Select the printer name, and then click [Next >].



5. Check that the system version for [Update data] is later than the system version for [Printer], and then click [Next >].

#### Note

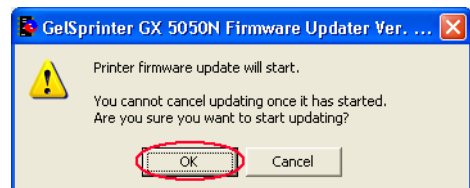
- The following screen is an example. The versions that actually appear may be different.



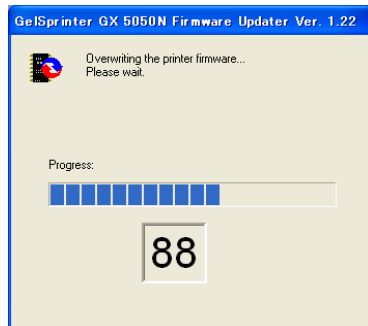
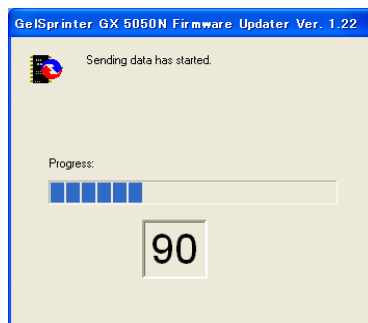
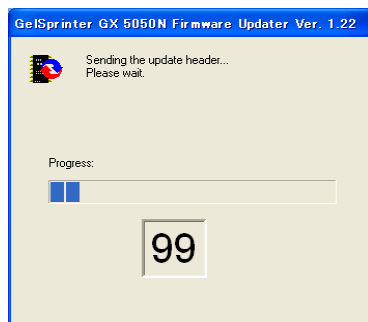
6. Click [OK].

#### Note

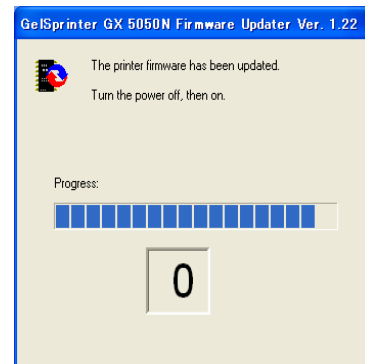
Do not switch the printer off while updating.



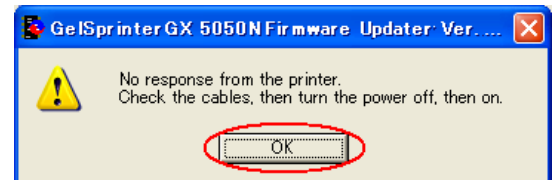
7. Updating starts.



8. The printer is switched back on automatically, after the screen shown below appears.



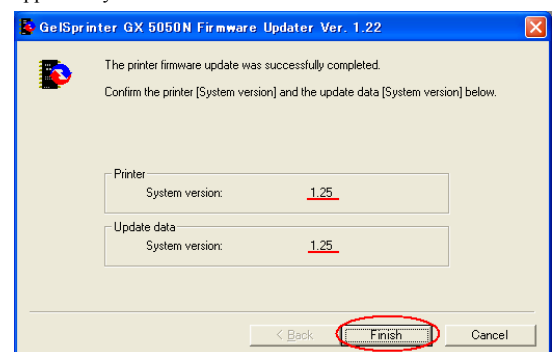
- If the following screen appears, switch the printer off and then back on, and then click [OK].



9. After updating, check the version, and then click [Finish].

Note

The following screen is an example. The versions that actually appear may be different.



10. Updating is complete.

## **5.2. For Users of the RPCS Raster (Bidirectional-Disabled) or PCL Driver**

This section explains how to update the bidirectional-disabled RPCS raster printer driver or PCL printer driver.

To update the firmware using the PCL driver, see 3. “Update Cautions”, and then check the following:

- You must be able to view the printer’s control panel.
  - ⇒ The procedure requires you to check the printer’s status on the control panel.  
Make sure you are able to view the printer’s control panel when updating the firmware.
- Check the current firmware version and the firmware version you want to install.
  - ⇒ Take care to install only firmware versions that are later than the version that is already installed.

[How to check the current firmware version]

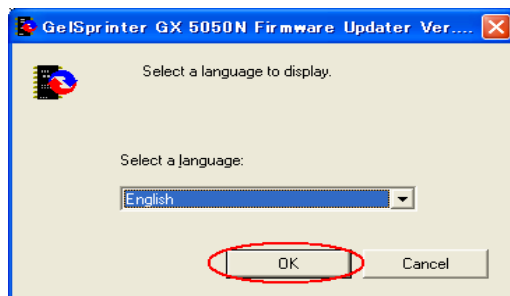
1. Press the [Menu] key on the printer’s control panel.
2. Select [Test Print].
3. Execute [Config. Page].
4. The System Summary is printed.
5. Check the version number under “System Version”.

1. Double-click [Product Name\_FirmwareUpdater\_VX\_XX.exe] to start the update.

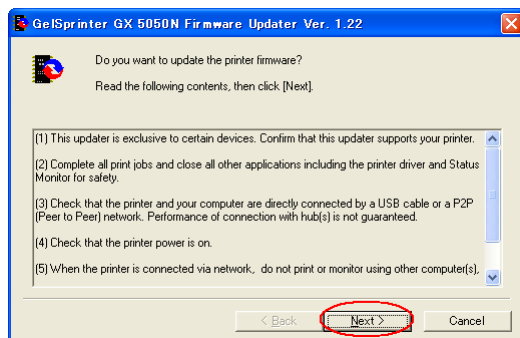
Note

Product Name represents the machine name; VX\_XX, the version.

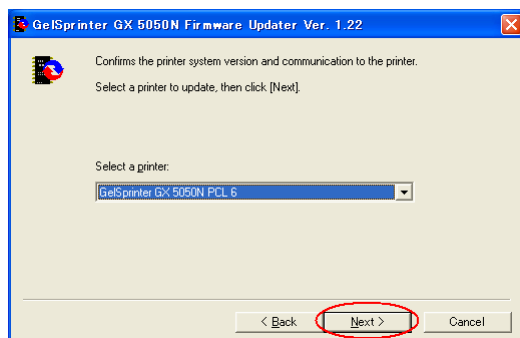
2. Select [English], and then click [OK].



3. The following screen appears. Check the displayed details, and then click [Next >].

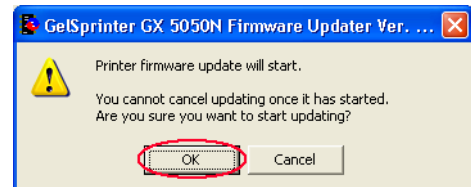


4. Select the printer name, and then click [Next >].

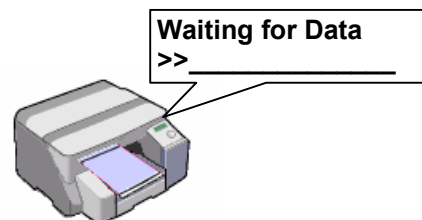


5. After checking the following, click [OK].

- A functional printer has been selected.
  - The printer is available and not currently inactive.
  - The printer is not offline.
  - There are no remaining print jobs displayed on the task bar.
- \* Check the control panel for the next step.

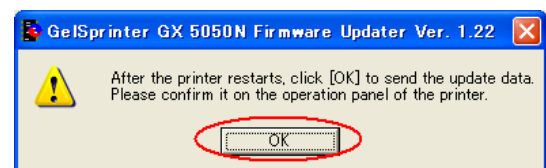


6. Check that the message "Waiting for Data" is displayed on the printer's control panel.



7. Click [OK].

\* Check the control panel for the next step.



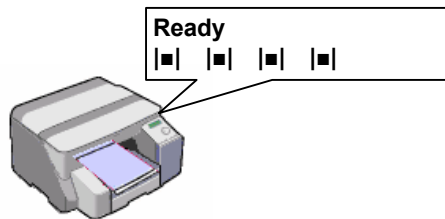


#### 8. Updating starts.

Check the update progress displayed on the LCD of the printer's control panel.

The update progress should be as shown in the diagram on the right.

When the "Ready" message appears, the printer is ready to print.



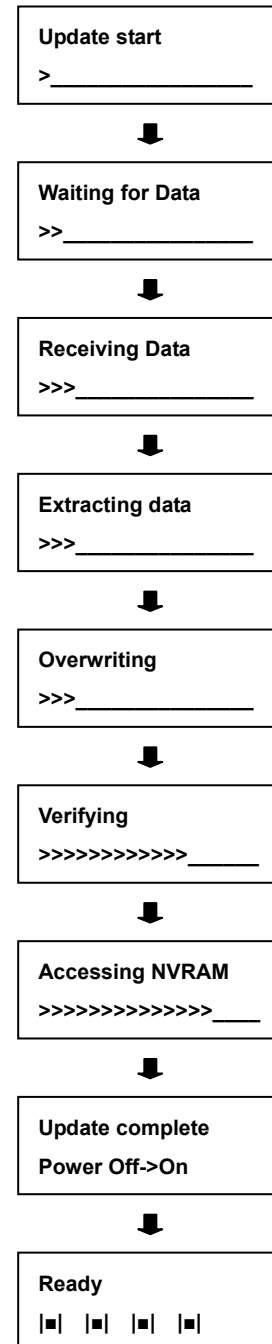
#### 9. After the update, check that the new firmware version is displayed.

Use the following procedure to check the version of your printer.

1. Press the [Menu] key on the printer's control panel.
2. Select [Test Print].
3. Execute [Config. Page].
4. The System Summary is printed.
5. Check the version number under "System Version".

#### 10. The update is complete.

\* The progress of the update is displayed on the LCD of the printer's control panel in the following order.



## **6. Trademarks**

Adobe and Acrobat are either registered trademarks or trademarks of Adobe Systems Incorporated in the United States and/or other countries.

Pentium is a registered trademark of Intel Corporation.

Netscape is a registered trademark of Netscape Communication Corporation in the U.S. and/or other countries.

Macromedia and Flash are either registered trademarks or trademarks of Macromedia, Inc. in the U.S. and/or other countries.

Microsoft, Windows, Windows NT are either registered trademarks or trademarks of Microsoft Corporation in the U.S. and/or other countries.

Other product names used herein are for identification purposes only and might be trademarks of their respective companies.

We disclaim any and all rights to those marks.

- The product names of Windows 2000 are as follows:

- Microsoft® Windows® 2000 Professional

- Microsoft® Windows® 2000 Server

- Microsoft® Windows® 2000 Advanced Server

- The product names of Windows XP are as follows:

- Microsoft® Windows® XP Home Edition

- Microsoft® Windows® XP Professional

- The product names of Windows Server 2003 are as follows:

- Microsoft® Windows Server® 2003 Standard Edition

- Microsoft® Windows Server® 2003 Enterprise Edition

- Microsoft® Windows Server® 2003 Web Edition

- The product names of Windows Vista are as follows:

- Microsoft® Windows Vista® Home Basic

- Microsoft® Windows Vista® Home Premium

- Microsoft® Windows Vista® Business

- Microsoft® Windows Vista® Ultimate

- The product names of Windows Server 2008 are as follows:

- Microsoft® Windows Server® 2008 Standard

- Microsoft® Windows Server® 2008 Enterprise