

Model: GF10		Date: 31-Mar-99	No.: 1
Modified Article: Paper Pick-up Sensor		Prepared by: K. Moriizumi	
From: GTSS Field Information Dept			
Reason for Modification:	<input type="checkbox"/> Parts catalog correction <input type="checkbox"/> To facilitate assembly <input type="checkbox"/> Part standardization	<input type="checkbox"/> Vendor change <input checked="" type="checkbox"/> To improve reliability <input type="checkbox"/> Other	<input type="checkbox"/> To meet standards ()

Old part number	New part number	Description	Qty	Int	Page	Index	Note
G0253004	G0253047	Actuator – Paper Pick-up Sensor	1	X/X	17	23	1
	G0253048	Shaft – Paper Pick-up Sensor	1	X/X			1
G0253026	G0253049	Spring – Paper Pick-up Sensor	1	X/X	17	22	1

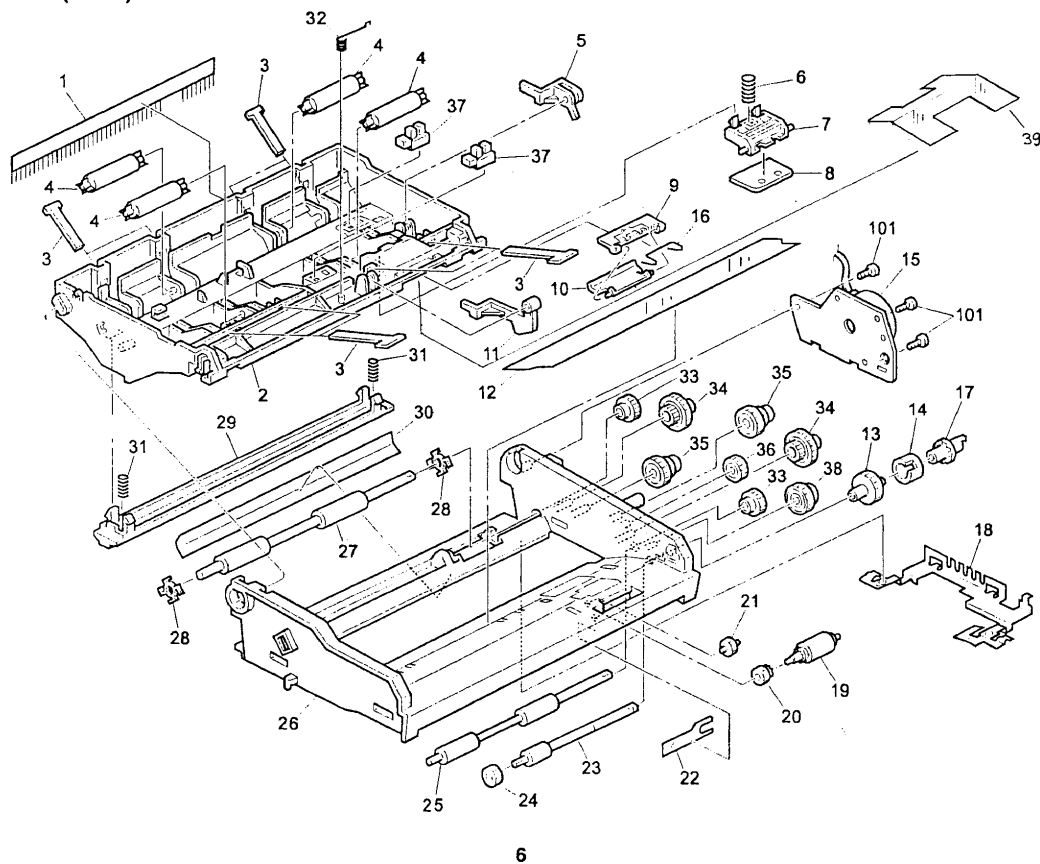
Note: The interchangeability of these parts as a combination is “X/O”.
 For example, all parts need to be replaced even if only G0253026 (spring) is replaced.

RC	REBV	ASIA	
*	*	*	

Model: GF10		Date: 31-Mar-99	No.: 2
Modified Article: Guide Plate		Prepared by: K. Moriizumi	
From: GTSS Field Information Dept			
Reason for Modification:	<input checked="" type="checkbox"/> Parts catalog correction <input type="checkbox"/> To facilitate assembly <input type="checkbox"/> Part standardization	<input type="checkbox"/> Vendor change <input type="checkbox"/> To improve reliability <input type="checkbox"/> Other	<input type="checkbox"/> To meet standards ()

Old part number	New part number	Description	Qty	Int	Page	Index	Note
---	G0252403	Guide Plate – Separation: Front Upper	0→1		7	39	

3.DF UNIT 2 (G036)



RC	REBV	ASIA	
*	*	*	

Reissued: 16-Nov-99

Model: GF10	Date: 31-Mar-99	No.: MG025003a
-------------	-----------------	----------------

MB Correction

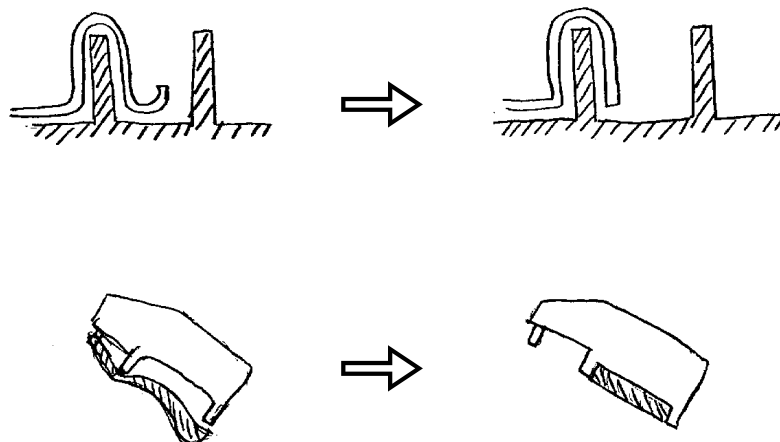
The items in bold italics have been corrected or added.

Modified Article: ADF		Prepared by: K. Moriizumi	
From: Technical Services Dept.,GTS Division			
Reason for Modification:	<input type="checkbox"/> Parts catalog correction	<input type="checkbox"/> Vendor change	<input type="checkbox"/> To meet standards ()
	<input type="checkbox"/> To facilitate assembly	<input checked="" type="checkbox"/> To improve reliability	
	<input checked="" type="checkbox"/> Part standardization	<input type="checkbox"/> Other	

Model: ☐ GF10-1 ☒ GF10-2
☐ GF10-1S ☐ GF10-2S
☐ GS10 ☐ GF10Better

Old part number	New part number	Description	Qty	Int	Page	Index	Note
G0252437D	G0252437E	Ground Plate – Document Roller	1→1	X/O	5	8	
G0252446	G0252446A	Separation Tab	1→1	X/O	7	8	

This modification has been implemented from the first lot of mass-production.



RC	REBV	ASIA	
*	*	*	

Model: GF10		Date: 31-Mar-99	No.: 4
Modified Article: Paper Tray		Prepared by: K. Moriizumi	
From: GTSS Field Information Dept			
Reason for Modification:	<input type="checkbox"/> Parts catalog correction <input type="checkbox"/> To facilitate assembly <input type="checkbox"/> Part standardization	<input type="checkbox"/> Vendor change <input checked="" type="checkbox"/> To improve reliability <input type="checkbox"/> Other	<input type="checkbox"/> To meet standards ()

Old part number	New part number	Description	Qty	Int	Page	Index	Note
G0253029D	G0253029E	Auxiliary Paper Tray	1→1	X/O	3	4	
	G0253039	Side Fence – Auxiliary Tray	0→1	-			

RC	REBV	ASIA	
*	*	*	

Reissued: 16-Nov-99

Model: GF10	Date: 31-Mar-99	No: MG025005a
-------------	-----------------	---------------

MB Correction

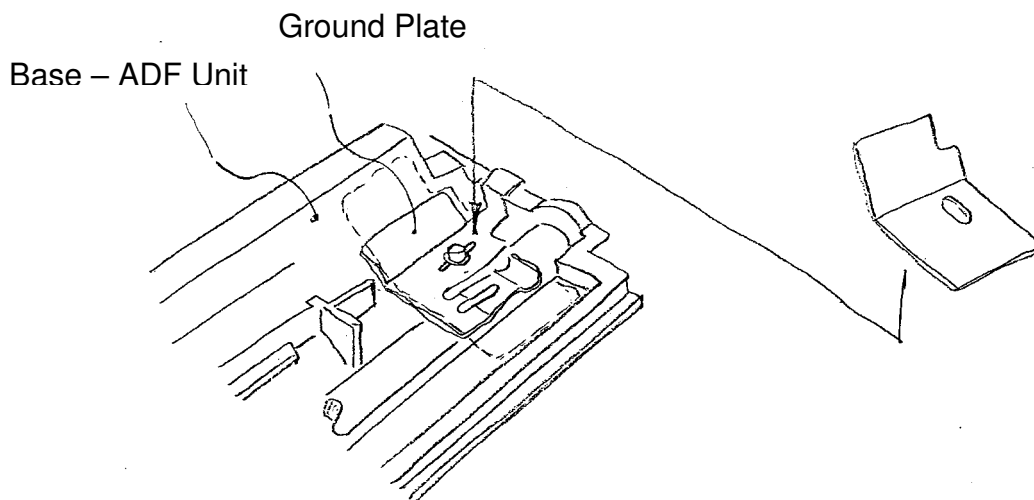
The items in bold italics have been corrected or added.

Modified Article: ADF Unit		Prepared by: K. Moriizumi	
From: Technical Services Dept.,GTS Division			
Reason for Modification:	<input type="checkbox"/> Parts catalog correction <input type="checkbox"/> To facilitate assembly <input type="checkbox"/> Part standardization	<input type="checkbox"/> Vendor change <input checked="" type="checkbox"/> To improve reliability <input type="checkbox"/> Other	<input type="checkbox"/> To meet standards ()

Model: ☐ GF10-1 ☒ GF10-2
☐ GF10-1S ☐ GF10-2S
☐ GS10 ☐ GF10Better

Old part number	New part number	Description	Qty	Int	Page	Index	Note
---	G0252489	Cover – Ground Plate	0→1				

This modification was implemented from the first lot of April 1999 mass-production.



The Grounding Plate has been added to reduce the noise that was being generated at the contact point between the roller and ADF base.

RC	REBV	ASIA	
*	*	*	

Model: GF10		Date: 31-Mar-99	No.: 6
Modified Article: PCB - Control Board		Prepared by: K. Moriizumi	
From: GTSS Field Information Dept			
Reason for Modification:	<input type="checkbox"/> Parts catalog correction <input type="checkbox"/> To facilitate assembly <input type="checkbox"/> Part standardization	<input type="checkbox"/> Vendor change <input checked="" type="checkbox"/> To improve reliability <input type="checkbox"/> Other	<input type="checkbox"/> To meet standards ()

Old part number	New part number	Description	Qty	Int	Page	Index	Note
G0266000E	G0266000F	PCB – Control Board	1→1	O/O	19	22	1

Note:

1. The firmware has been updated from Ver.8.4 to Ver.9.4 in order to fix some bugs.

RC	REBV	ASIA	
*	*	*	

Model: GF10		Date: 31-Mar-99	No.: 7
Modified Article: ADF		Prepared by: K. Moriizumi	
From: GTSS Field Information Dept			
Reason for Modification:	<input type="checkbox"/> Parts catalog correction <input type="checkbox"/> To facilitate assembly <input type="checkbox"/> Part standardization	<input type="checkbox"/> Vendor change <input checked="" type="checkbox"/> To improve reliability <input type="checkbox"/> Other	<input type="checkbox"/> To meet standards ()

Old part number	New part number	Description	Qty	Int	Page	Index	Note
G0252401	G0252405	ADF Upper Frame	1→1	X/X	7	2	1
G0252456	G0252469	Guide Roller	4→4	X/X	7	4	1

Note:

The interchangeability of these parts as a combination is "X/O".

RC	REBV	ASIA	
*	*	*	

Reissued: 16-Nov-99

Model: GF10	Date: 30-Jun-99	No.: MG025008a
-------------	-----------------	----------------

MB Correction

The items in bold italics have been corrected or added.

Modified Article: ADF Unit		Prepared by: K. Moriizumi	
From: Technical Services Dept., GTS Division			
Reason for Modification:	<input type="checkbox"/> Parts catalog correction <input type="checkbox"/> To facilitate assembly <input type="checkbox"/> Part standardization	<input type="checkbox"/> Vendor change <input checked="" type="checkbox"/> To improve reliability <input type="checkbox"/> Other	<input type="checkbox"/> To meet standards ()

Model: ☒ GF10-1 ☐ GF10-2
☐ GF10-1S ☐ GF10-2S
☐ GS10 ☐ GF10Better

Old part number	New part number	Description	Q'ty	Int	Page	Index	Note
G0256011	G0256012	PCB – SCB (G026)	1 - 1	O/O	19	21	

Model: ☐ GF10-1 ☒ GF10-2
☐ GF10-1S ☐ GF10-2S
☐ GS10 ☐ GF10Better

Old part number	New part number	Description	Q'ty	Int	Page	Index	Note
G0276011	G0276012	PCB – SCB (G036)	1 - 1	X/X	19	21	1
G0252416	G0252418A	ADF Motor – DC24V 0.2A	1 - 1	X/X	7	15	1

Note 1:

The interchangeability of these parts when installed together is O/O.

This modification was implemented from the first lot of April mass-production.

The torque of the ADF motor was weak when copying over 100 sheets continuously in high temperature and high humidity conditions. After the modification, the motor is able to maintain a strong enough torque, even under such conditions.

The part number for the PCB - SCB of the GF10-1 has also been changed for parts standardization purposes.

Model: GF10		Date: 30-Jun-99	No.: MG025009
Modified Article: Installation Guide		Prepared by: K. Moriizumi	
From: Technical Service Dept., GTS Division			
Reason for Modification:	<input checked="" type="checkbox"/> Parts catalog correction <input type="checkbox"/> To facilitate assembly <input type="checkbox"/> Part standardization	<input type="checkbox"/> Vendor change <input type="checkbox"/> To improve reliability <input type="checkbox"/> Other	<input type="checkbox"/> To meet standards ()

Old part number	New part number	Description	Q'ty	Int	Page	Index	Note
(GF10-1/2)							
	G0368610	Installation Guide 1			21	7	
	G0268610	Installation Guide 2			21	7	
(GF10-1S)							
	G0368610	Installation Guide 1			21	7	
	G0268510	Installation Guide 2			21	7	
(GF10-2S)							
	G0267610	Installation Guide 1			21	7	
	G0268510	Installation Guide 2			21	7	
(GF10 better)							
	G0278510	Installation Guide 1			21	7	
	G0278610	Installation Guide 2			21	7	
(GS10)							
	G0258510	Installation Guide 1			19		
	G0258610	Installation Guide 2			19		

Modification Bulletin

PAGE: 1/1

Reissued: 16-Nov-99

Model: GF10	Date: 30-Jun-99	No.: MG025010a
-------------	-----------------	----------------

MB Correction

The items in bold italics have been corrected or added.

Modified Article: ADF Unit		Prepared by: K. Moriizumi	
From: Technical Services Dept., GTS Division			
Reason for Modification:	<input type="checkbox"/> Parts catalog correction	<input type="checkbox"/> Vendor change	<input type="checkbox"/> To meet standards ()
	<input type="checkbox"/> To facilitate assembly	<input checked="" type="checkbox"/> To improve reliability	
	<input checked="" type="checkbox"/> Part standardization	<input type="checkbox"/> Other	

Model: ☐ GF10-1 ☒ GF10-2
☐ GF10-1S ☐ GF10-2S
☐ GS10 ☐ GF10Better

Old part number	New part number	Description	Q'ty	Int	Page	Index	Note
G0252471	G0252508	Upper Plate – Document Guide	1 - 1	O/O	7	29	

This modification is the countermeasure for the PC scanning problem.

Reissue Note:

This modification was applied to the GF10-2S, GS10 and GF10Better. The new part number has already been listed in the part catalogues for these models. We have also changed the part number for GF10-2 for parts standardization purposes.

Reissued: 31-Aug-99

Model: GF10	Date: 30-Jun-99	No.: MG025011a
-------------	-----------------	----------------

MB Correction

The items in bold italics have been corrected or added.

Modified Article: Paper Pick-up		Prepared by: K. Moriizumi	
From: Technical Service Dept., GTS Division			
Reason for Modification:	<input type="checkbox"/> Parts catalog correction	<input type="checkbox"/> Vendor change	<input type="checkbox"/> To meet standards ()
	<input type="checkbox"/> To facilitate assembly	<input checked="" type="checkbox"/> To improve reliability	
	<input type="checkbox"/> Part standardization	<input type="checkbox"/> Other	

Old part number	New part number	Description	Q'ty	Int	Page	Index	Note
(GF10-1/2)							
G0253015	G0253061	Actuator – Paper Pick-up Cam	1 - 1	O/O	17	27	
	G0253062	Decal – Paper Pick-up Cam Actuator	0 - 1				

Reissued: 16-Nov-99

Model: GF10	Date: 30-Jun-99	No.: MG025012a
-------------	-----------------	----------------

MB Correction

The items in bold italics have been corrected or added.

Modified Article: ADF Unit		Prepared by: K. Moriizumi	
From: Technical Services Dept., GTS Division			
Reason for Modification:	<input type="checkbox"/> Parts catalog correction <input type="checkbox"/> To facilitate assembly <input type="checkbox"/> Part standardization	<input type="checkbox"/> Vendor change <input checked="" type="checkbox"/> To improve reliability <input type="checkbox"/> Other	<input type="checkbox"/> To meet standards ()

Model: ☐ GF10-1 ☒ GF10-2
☐ GF10-1S ☐ GF10-2S
☐ GS10 ☐ GF10Better

Old part number	New part number	Description	Q'ty	Int	Page	Index	Note
G0252401	G0252405	ADF Upper Frame	1 – 1	X/X	7	2	1
G0252456	G0252469	Guide Roller	4 – 4	X/X	7	4	1

Note 1:

The interchangeability of these parts when installed together is O/O.

***As a result of this modification, the load on the guide rollers has been reduced.
This has therefore reduced the load applied to the paper.***

Please refer to MB No. MRG025008.

Model: GF10		Date: 30-Jun-99	No.: MG025013
Modified Article: PCB - Control Board		Prepared by: K. Moriizumi	
From: Technical Service Dept., GTS Division			
Reason for Modification:	<input type="checkbox"/> Parts catalog correction <input type="checkbox"/> To facilitate assembly <input type="checkbox"/> Part standardization	<input type="checkbox"/> Vendor change <input type="checkbox"/> To improve reliability <input checked="" type="checkbox"/> Other	<input type="checkbox"/> To meet standards ()

Old part number	New part number	Description	Q'ty	Int	Page	Index	Note
(GF10-1/2)							
G0266000F	G0266000G	PCB – Control Board	1 - 1	O/O	19	22	

Note:

The firmware has been updated from ver. 9.4 to ver. 9.5 in order to enable support for 13 languages.

Model: GF10		Date: 30-Jun-99	No.: MG025014
Modified Article: Operation Panel		Prepared by: K. Moriizumi	
From: Technical Service Dept., GTS Division			
Reason for Modification:	<input type="checkbox"/> Parts catalog correction <input checked="" type="checkbox"/> To facilitate assembly <input type="checkbox"/> Part standardization	<input type="checkbox"/> Vendor change <input type="checkbox"/> To improve reliability <input type="checkbox"/> Other	<input type="checkbox"/> To meet standards ()

Old part number	New part number	Description	Q'ty	Int	Page	Index	Note
(GF10-1/2)							
G0361461	G0361461A	Operation Panel	1 - 1	O/O	9	14	

Model: GF10		Date: 30-Jun-99	No.: MG025015
Modified Article: Fusing Unit		Prepared by: K. Moriizumi	
From: Technical Service Dept., GTS Division			
Reason for Modification:	<input type="checkbox"/> Parts catalog correction <input type="checkbox"/> To facilitate assembly <input checked="" type="checkbox"/> Part standardization	<input type="checkbox"/> Vendor change <input type="checkbox"/> To improve reliability <input type="checkbox"/> Other	<input type="checkbox"/> To meet standards ()

Old part number	New part number	Description	Q'ty	Int	Page	Index	Note
(GS10)							
G0254719	G0254519	Right Terminal - Thermofuse	1 - 1	O/O	15	15	
(GF10 Better)							
G0254719	G0254519	Right Terminal - Thermofuse	1 - 1	O/O	13	15	

Model: GF10		Date: 30-Jun-99	No.: MG025016
Modified Article: Model Name Plate		Prepared by: K. Moriizumi	
From: Technical Service Dept., GTS Division			
Reason for Modification:	<input checked="" type="checkbox"/> Parts catalog correction <input type="checkbox"/> To facilitate assembly <input type="checkbox"/> Part standardization	<input type="checkbox"/> Vendor change <input type="checkbox"/> To improve reliability <input type="checkbox"/> Other	<input type="checkbox"/> To meet standards ()

The Model Name Plates are missing from the parts catalogue. The following table shows the part numbers for all models.

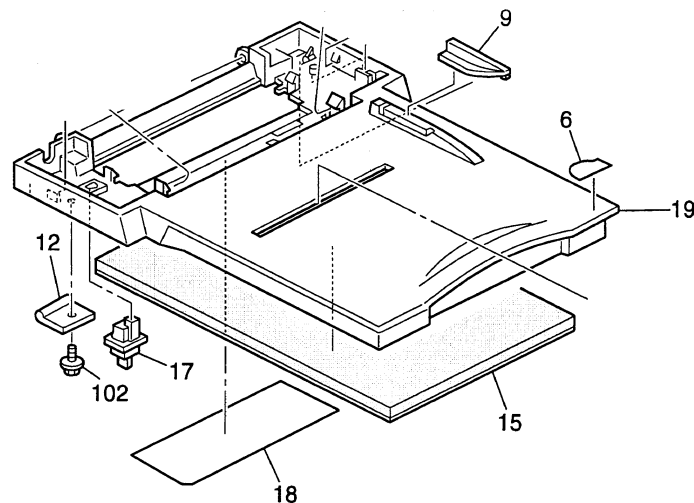
	GF10-1	GF10-2	GF10-1S	GF10-2S	GF10-Better	GS10	Note
RICOH	G0261194	G0361190	G0261208	G0361200	G0271198	G0251219	
Infotec	G0261195	G0361191	G0261207	G0361201	G0271242	G0251236	
Nasha	G0261196	G0361192	G0261209	G0361202	G0271243	G0251237	
Rex	G0261197	G0361193	G0261210	G0361203	G0271244	G0251238	
Ges	G0261198	G0361194	G0261211	G0361204	G0271245	G0251239	

Model: GF-10		Date: 15-Aug-99	No.: MG025017
Modified Article: Operation Manual / Installation Guide		Prepared by: K. Moriizumi	
From: Technical Service Dept., GTS Division			
Reason for Modification:	<input checked="" type="checkbox"/> Parts catalog correction <input type="checkbox"/> To facilitate assembly <input type="checkbox"/> Part standardization	<input type="checkbox"/> Vendor change <input type="checkbox"/> To improve reliability <input type="checkbox"/> Other	<input type="checkbox"/> To meet standards ()

Old part number	New part number	Description	Q'ty	Int	Page	Index	Note
(GF10-1/2)							
	G0268647	Operation Manual (NA)	1	-	21	6	
	G0268608	Operation Manual (Asia)	1	-	21	6	
	G0268610	Installation Guide – 1	1	-	21	7	
	G0368610	Installation Guide – 2	1	-	21	7	
(GF10-1S/ GF10B/GF10-2S)							
G0268647	G0268547	Operation Manual (NA - G036)	1 – 1	-	21	6	
	G0268508	Operation Manual (Asia – G026/G036)	1	-	21	6	
	G0278647	Operation Manual (NA – G027)	1	-	21	6	
	G0278608	Operation Manual (Asia – G027)	1	-	21	6	
G0268610	G0268610	Installation Guide – 1 (G026)	1 – 1	-	21	7	
G0368610	G0268510	Installation Guide – 2 (G026)	1 – 1	-	21	7	
G0268610	G0267610	Installation Guide – 1 (G036)	1 – 1	-	21	7	
G0368610	G0268510	Installation Guide – 2 (G036)	1 – 1	-	21	7	
G0268610	G0278510	Installation Guide – 1 (G027)	1 – 1	-	21	7	
G0368610	G0278610	Installation Guide – 2 (G027)	1 – 1	-	21	7	
(GS10)							
	G0258608	Operation Manual (Asia)	1	-	19	-	
	G0258510	Installation Guide – 1 (G025)	1	-	19	-	
	G0258610	Installation Guide – 2 (G025)	1	-	19	-	

Model: GF10		Date: 15-Aug-99	No.: MG025018
Modified Article: ADF unit		Prepared by: K. Moriizumi	
From: Technical Service Dept., GTS Division			
Reason for Modification:	<input checked="" type="checkbox"/> Parts catalog correction	<input type="checkbox"/> Vendor change	<input type="checkbox"/> To meet standards ()
	<input type="checkbox"/> To facilitate assembly	<input type="checkbox"/> To improve reliability	
	<input type="checkbox"/> Part standardization	<input type="checkbox"/> Other	

Old part number	New part number	Description	Q'ty	Int	Page	Index	Note
(GF10-2)							
-	G0272406	Shading Plate – Front			5	18	
-	G0272401	Platen Cover			5	19	



Modification Bulletin

PAGE: 1/1

Reissued: 16-Nov-99

Model: GF10	Date: 15-Aug-99	No.: MG025019a
-------------	-----------------	----------------

MB Correction

The items in bold italics have been corrected or added.

Modified Article: ADF unit		Prepared by: K. Moriizumi	
From: Technical Service Dept., GTS Division			
Reason for Modification:	<input type="checkbox"/> Parts catalog correction <input type="checkbox"/> To facilitate assembly <input checked="" type="checkbox"/> Part standardization	<input type="checkbox"/> Vendor change <input checked="" type="checkbox"/> To improve reliability <input type="checkbox"/> Other	<input type="checkbox"/> To meet standards ()

Model: ☐ GF10-1 ☒ GF10-2
☐ GF10-1S ☐ GF10-2S
☐ GS10 ☐ GF10Better

Old part number	New part number	Description	Q'ty	Int	Page	Index	Note
G0252449	G0252560	Movable Ratchet – Feed Roller	1 - 1	X/O	7	14	
G0252440	G0252494	Document Pick-up Roller	1 - 1	X/X	7	19	1
G0252482	G0252563	Spring – Pick-up Pressure	1 - 1	X/X	7	16	1
G0252400	G0252406	ADF Base Frame	1 - 1	X/X	7	26	1
G0252447	G0252562	Coil Spring – Separation Pad	1 - 1	X/X	7	6	1
G0252403	G0252407	Guide Mylar	1 - 1	X/X	7	39	2
G0252445	G0252497	Separation Pad Holder	1 – 1	X/O	7	7	2
G0252446	G0252498	Separation Pad	1 - 1	X/X	7	8	2

Note:

1. The interchangeability of these parts when installed together is X/O.
2. The interchangeability of these parts when installed together is X/O.

This change is to improve reliability for ADF non-feed.

When originals with burrs on the leading edge from cutting are placed in the ADF, non-feed occasionally occurs. After this change, the possibility of successful ADF feed is increased

This modification has not been applied to GF10-2 mass-production, as this model has been discontinued.

Reissue Note:

This modification has been applied to the GF10-2S, GS10 and GF10Better. We have also changed the part number for GF10-2 for part standardization purposes.

Reissued: 31-Aug-99

Model: GF10	Date: 15-Aug-99	No.: MG025020a
-------------	-----------------	----------------

MB Correction

The items in bold italics have been corrected or added.

Modified Article: Main Motor		Prepared by: K. Moriizumi	
From: Technical Service Dept., GTS Division			
Reason for Modification:	<input checked="" type="checkbox"/> Parts catalog correction	<input type="checkbox"/> Vendor change	<input type="checkbox"/> To meet standards ()
	<input type="checkbox"/> To facilitate assembly	<input type="checkbox"/> To improve reliability	
	<input type="checkbox"/> Part standardization	<input type="checkbox"/> Other	

Old part number	New part number	Description	Q'ty	Int	Page	Index	Note
<i>(GF10-1/2, GF10-1S/2S, GF10B)</i>							
<i>G0251320</i>	<i>G0251001</i>	<i>Main Motor – DC24V 0.7A</i>	<i>1-1</i>	<i>O/O</i>	<i>15</i>	<i>28</i>	
<i>(GS10)</i>							
<i>G0251320</i>	<i>G0251001</i>	<i>Main Motor – DC24V 0.7A</i>	<i>1-1</i>	<i>O/O</i>	<i>11</i>	<i>28</i>	

Model: GF10		Date: 15-Aug-99	No.: MG025021
Modified Article: PCB - Control Board		Prepared by: K. Moriizumi	
From: Technical Service Dept., GTS Division			
Reason for Modification:	<input type="checkbox"/> Parts catalog correction <input type="checkbox"/> To facilitate assembly <input type="checkbox"/> Part standardization	<input type="checkbox"/> Vendor change <input checked="" type="checkbox"/> To improve reliability <input type="checkbox"/> Other	<input type="checkbox"/> To meet standards ()

Old part number	New part number	Description	Q'ty	Int	Page	Index	Note
G0266000G	G0266000H	PCB – Control Board	1 - 1	O/O	19	22	

The oscillator on the control board has been changed.
 This change will be effective from the 1st production of June 1999.



Reissued: 16-Nov-99

Model: GF10	Date: 15-Aug-99	No.: MG025022a
-------------	-----------------	----------------

MB Correction

The items in bold italics have been corrected or added.

Modified Article: ADF Unit		Prepared by: K. Moriizumi	
From: Technical Services Dept., GTS Division			
Reason for Modification:	<input type="checkbox"/> Parts catalog correction	<input type="checkbox"/> Vendor change	<input type="checkbox"/> To meet standards ()
	<input type="checkbox"/> To facilitate assembly	<input checked="" type="checkbox"/> To improve reliability	
	<input type="checkbox"/> Part standardization	<input type="checkbox"/> Other	

Model: ☒ GF10-1 ☒ GF10-2
☒ GF10-1S ☒ GF10-2S
☒ GS10 ☒ GF10Better

Old part number	New part number	Description	Q'ty	Int	Page	Index	Note
G0252560	G0252564	Movable Ratchet – Feed Roller	1 - 1	X/O	7	14	

This part has been modified to improve the reliability of the ADF unit.

This modification will help to further prevent multi-feeding.

This modification was applied to the 1st lot of August 1999. mass-production.

Model: GF-10		Date: 25-Jan-02	No.: MG025023
Modified Article: Left Bracket - Bottom Plate		Prepared by:	
From: Technical Service Dept., GTS Division			
Reason for Modification:	<input type="checkbox"/> Parts catalog correction <input type="checkbox"/> To facilitate assembly <input checked="" type="checkbox"/> Part standardization	<input type="checkbox"/> Vendor change <input type="checkbox"/> To improve reliability <input type="checkbox"/> Other	<input type="checkbox"/> To meet standards ()

The Bottom Plate for the Left Bracket has been changed on the following models for standardization:

- | | |
|---|--|
| <input checked="" type="checkbox"/> GF10-1 | <input checked="" type="checkbox"/> GF10-2 |
| <input checked="" type="checkbox"/> GF10-1S | <input checked="" type="checkbox"/> GF10-2S |
| <input checked="" type="checkbox"/> GS10 | <input checked="" type="checkbox"/> GF10Better |

Old part number	New part number	Description	Q'ty	Int	Page	Index	Note
G0253018	H5383107	Left Bracket – Bottom Plate	1	O/O	11	1	

Model: GF-10		Date: 13-Dec-02	No.: MG025024
Modified Article: Paper Pick-up Roller		Prepared by: K. Moriizumi	
From: Technical Services sec. Service Planning Dept.			
Reason for Modification:	<input checked="" type="checkbox"/> Parts catalog correction <input type="checkbox"/> To facilitate assembly <input type="checkbox"/> Part standardization	<input type="checkbox"/> Vendor change <input type="checkbox"/> To improve reliability <input type="checkbox"/> Other	<input type="checkbox"/> To meet standards ()

Please apply the following P/N correction for the PFU Paper Pick-up Roller to your Parts Catalogs.

Applicable models:

- | | |
|---|--|
| <input checked="" type="checkbox"/> GF10-1 | <input checked="" type="checkbox"/> GF10-2 |
| <input checked="" type="checkbox"/> GF10-1S | <input checked="" type="checkbox"/> GF10-2S |
| <input checked="" type="checkbox"/> GS10 | <input checked="" type="checkbox"/> GF10Better |

Old part number	New part number	Description	Q'ty	Int	Page	Index	Note
G5122575	G5123014	Rim – Paper Pick-up Roller	1		5	9	
	G5123031	Paper Pick-up Roller	1		5	9	