

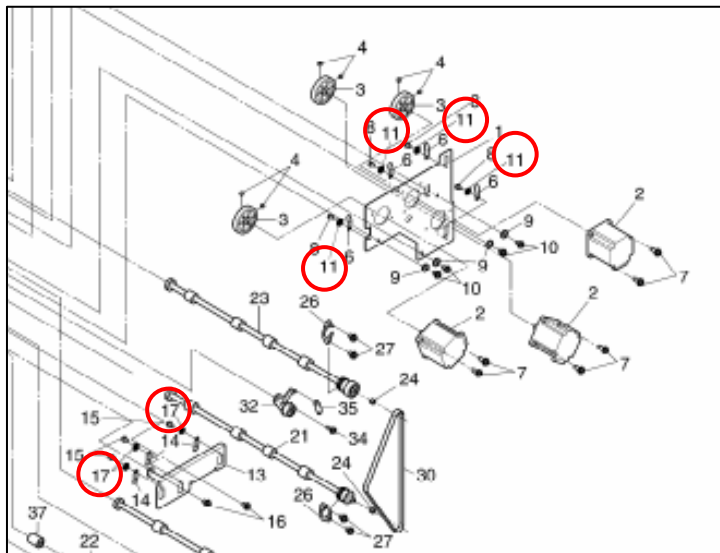
Model: EMP156		Date: 8-Feb-06	No.: MG155001
Modified Article: Parts Catalog Correction		Prepared by: N.Sakamoto	
From: 2nd Tech. Support Sec. Service Support Dept.			
Reason for Modification:	<input checked="" type="checkbox"/> Parts catalog correction <input type="checkbox"/> Vendor change <input type="checkbox"/> Other <input type="checkbox"/> To facilitate assembly <input type="checkbox"/> To improve reliability <input type="checkbox"/> To meet standards <input type="checkbox"/> Part standardization <input type="checkbox"/> Product Safety    (     )		

**Change:** The part in the table below was added.

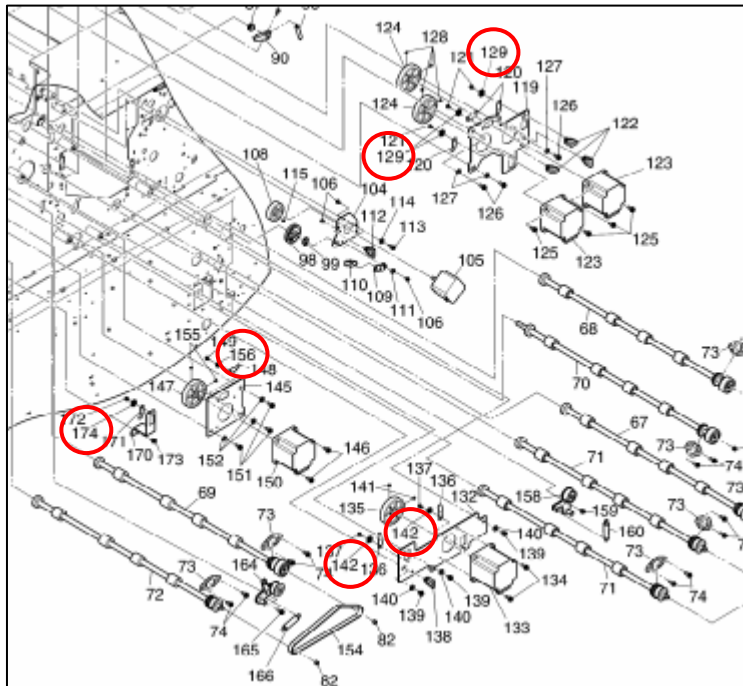
**Reason:** To attach the grounding plates more strongly.

Incorrect Part Number	Correct Part Number	Description	Q'ty	Page	Index	Note
			4	29	11	
			2	29	17	
			3	44	129	
			2	44	142	
			1	45	156	
			1	45	174	
			4	47	16	
			2	47	29	
			1	47	36	
			1	56	86	
			2	57	112	
			3	87	39	
			1	87	171	
			1	87	184	
			1	91	93	
			1	93	24	
			1	93	33	
			3	93	52	
			3	107	22	
			2	107	28	
			1	107	95	
			4	111	12	
			4	111	22	
			3	118	113	
	<b>G1551197</b>	Bolt Washer D3				

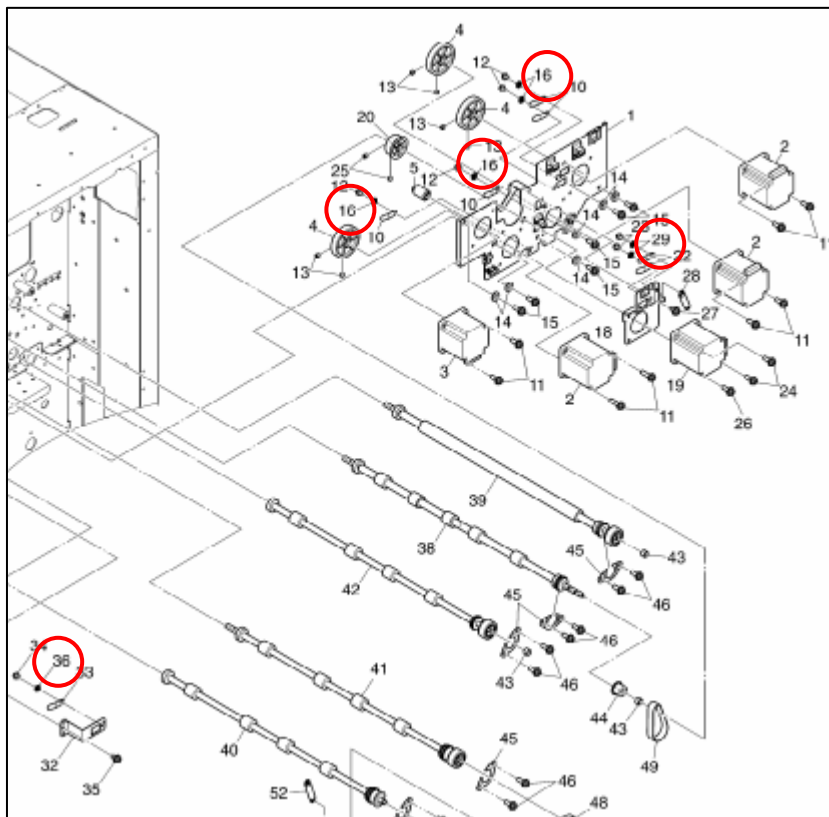
Page 29



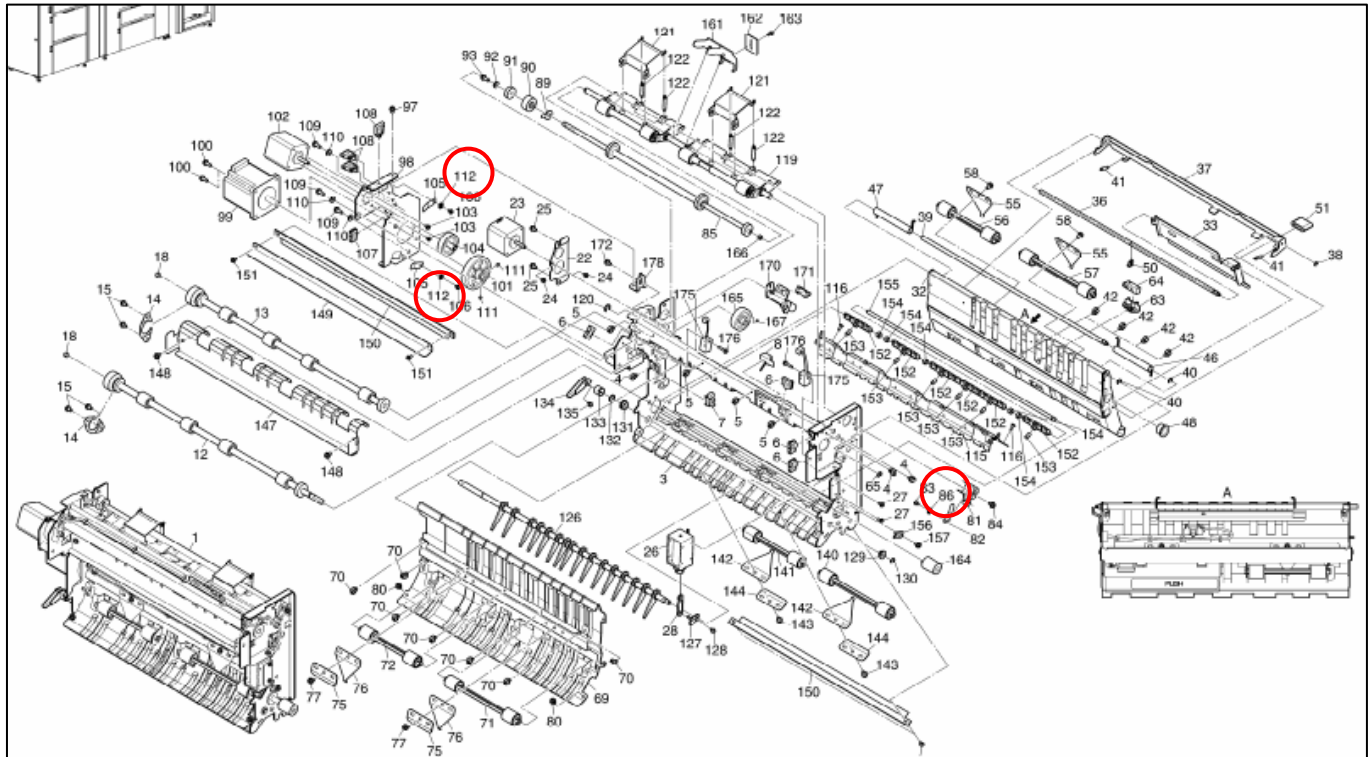
Page 44,45



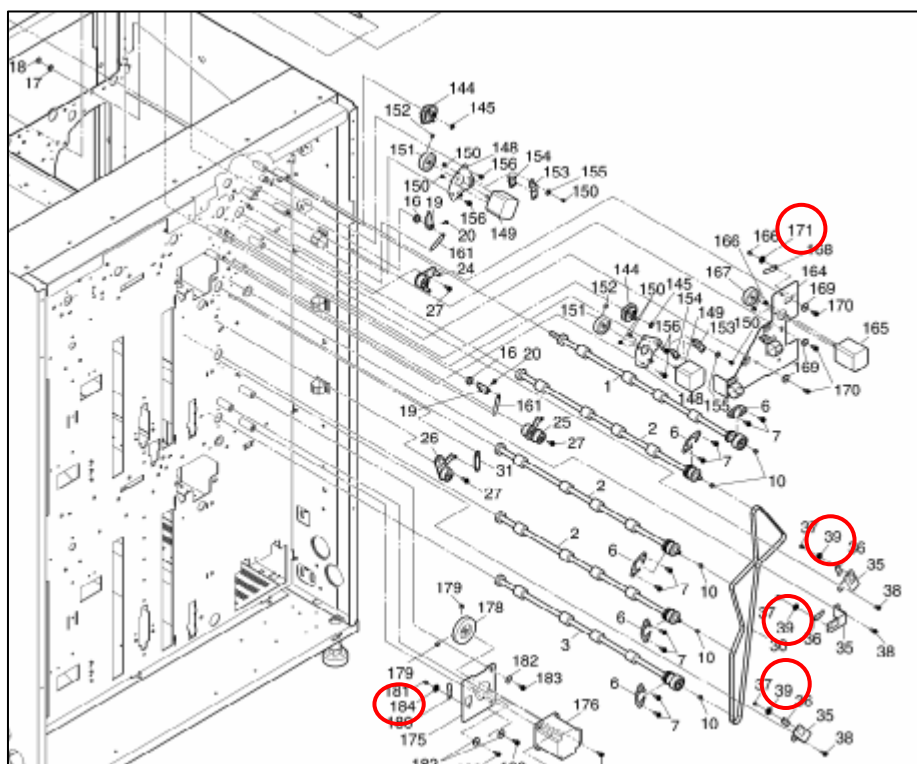
Page 47



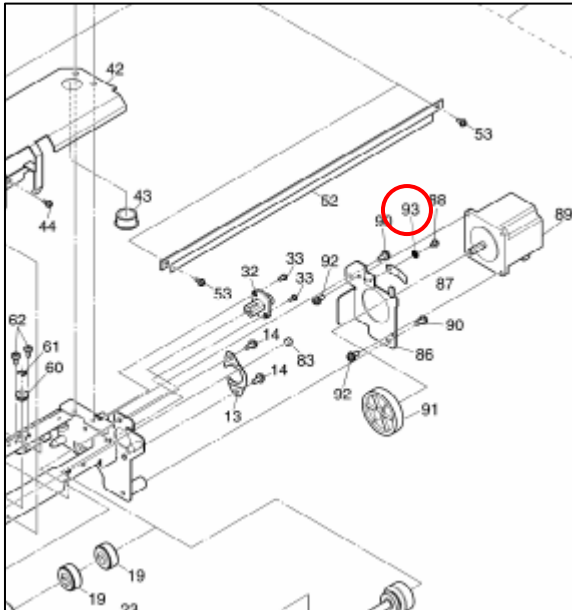
Page 56,57



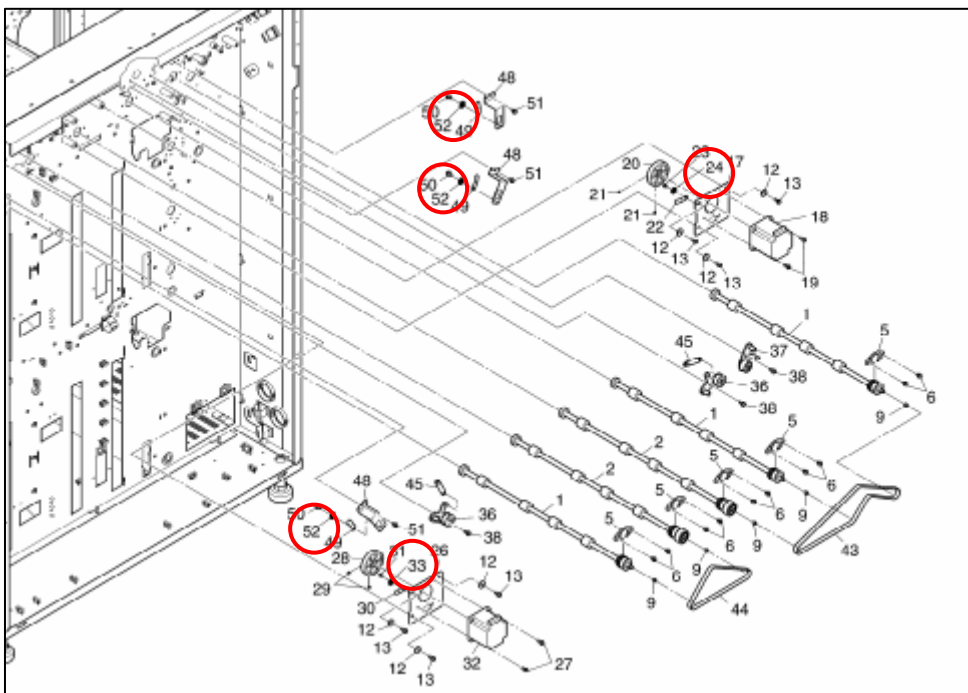
Page 87



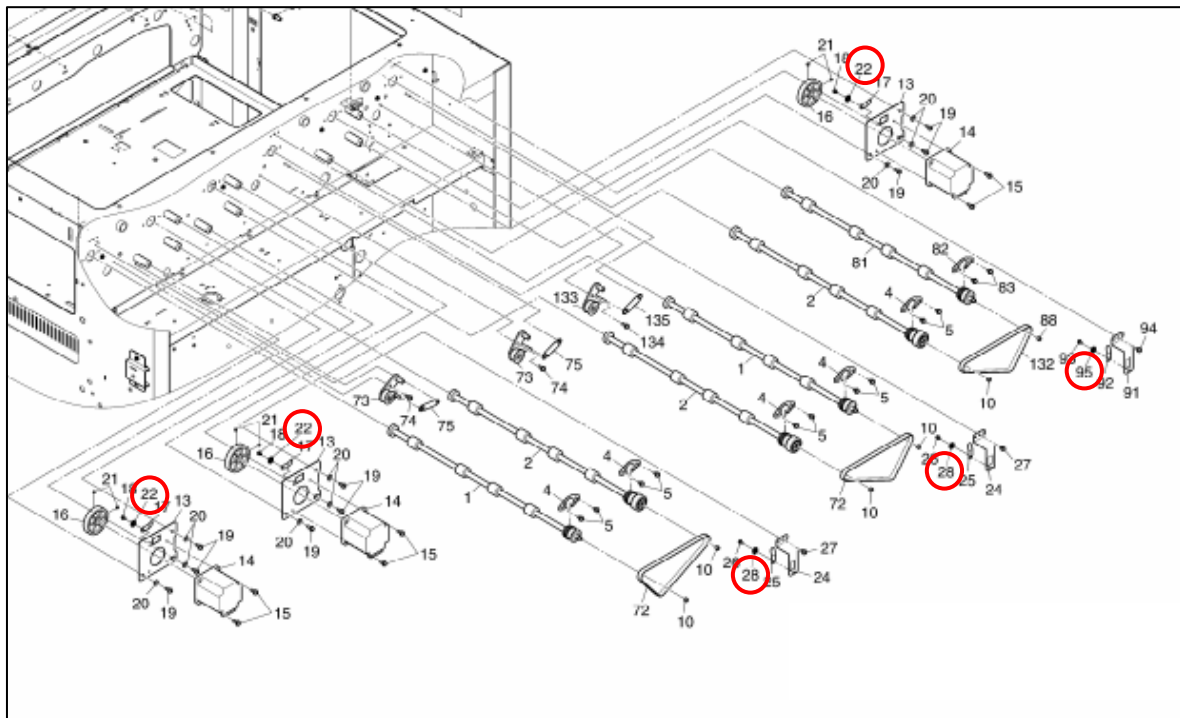
## Page 91



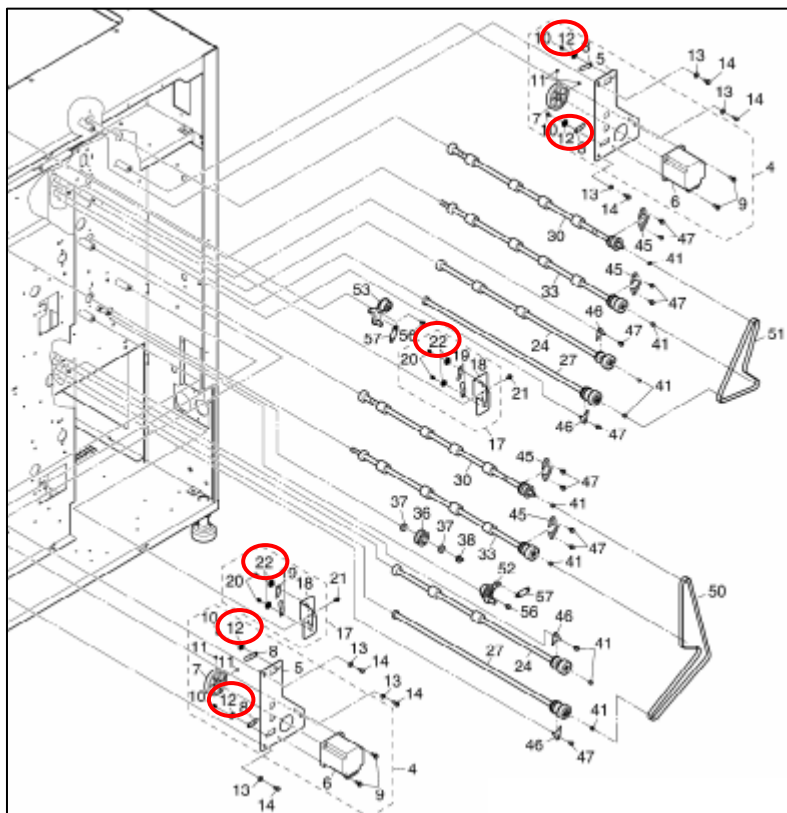
## Page 93



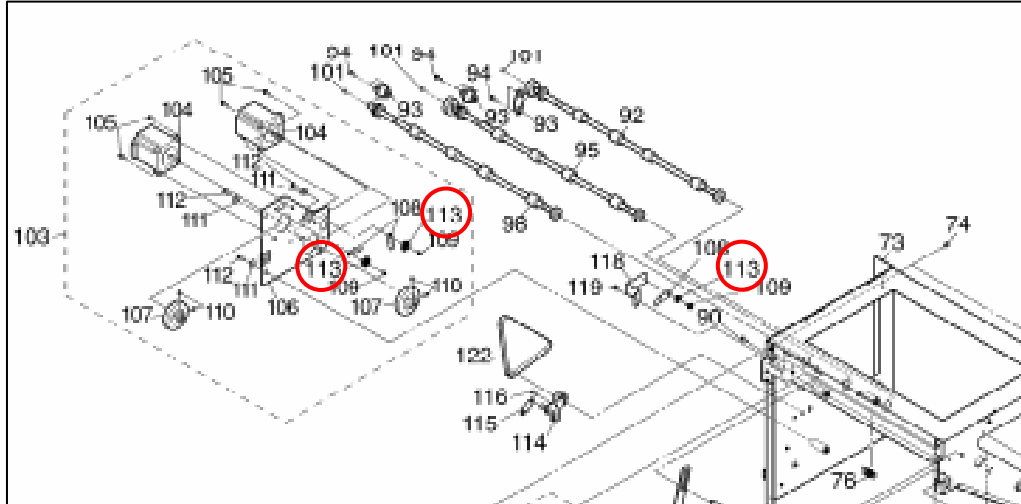
Page 107



Page 111



Page 118



### [RCL (Japan) Production ]

MODEL NAME	V/Hz	DESTINATION	CODE	SERIAL NO.
EMP156	200,208,220,230,240/ 60	USA	G155-17	Q4950940003
EMP156	380,400,415/ 50	Europe	G155-27	Q4950840001
High Capacity Feeder 1	200,208,220,230,240/ 50,60	USA, Europe	G867-00	Q6150970001
High Capacity Feeder 2	200,208,220,230,240/ 50,60	USA, Europe	G866-00	Q6050980001
Standard Stacker	200,208,220,230,240/ 50,60	USA, Europe	G865-01	Q6650850001
Additional Stacker	200,208,220,230,240/ 50,60	USA, Europe	G865-00	Q5950960001

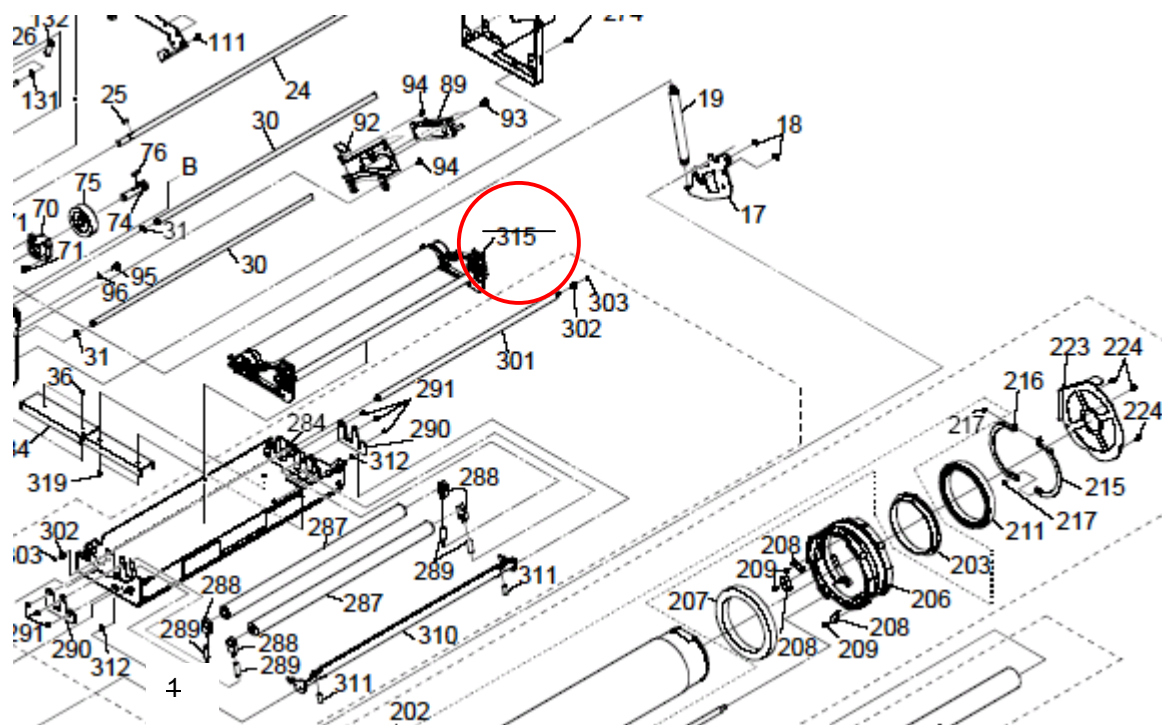


Model: EMP156		Date: 30-Jan-06	No.: MG155002
Modified Article: Parts Catalog Correction		Prepared by: Y.Minakawa	
From: 2nd Tech. Support Sec. Service Support Dept.			
Reason for Modification:	<input checked="" type="checkbox"/> Parts catalog correction <input type="checkbox"/> Vendor change <input type="checkbox"/> Other <input type="checkbox"/> To facilitate assembly <input type="checkbox"/> To improve reliability <input type="checkbox"/> To meet standards <input type="checkbox"/> Part standardization <input type="checkbox"/> Product Safety    (    )		

Old part number	New part number	Description	Q'ty	Int	Page	Index	Note
G1551540	-	Fuser Cleaning Web	1-0		55	315	

**Change:** The part was deleted from Service Parts.  
**Reason:** The part is user-replaceable.

Illustration Change (Page: 52)



Model: EMP156		Date:26-Jan-06	No.: MG155003
Modified Article: Parts Catalog Correction		Prepared by: N.Sakamoto	
From: 2nd Tech. Support Sec. Service Support Dept.			
Reason for Modification:	<input checked="" type="checkbox"/> Parts catalog correction <input type="checkbox"/> Vendor change <input type="checkbox"/> Other <input type="checkbox"/> To facilitate assembly <input type="checkbox"/> To improve reliability <input type="checkbox"/> To meet standards <input type="checkbox"/> Part standardization <input type="checkbox"/> Product Safety    (      )		

**Change/Reason:** The following part numbers were corrected.

Incorrect Part Number	Correct Part Number	Description	Q'ty	Page	Index	Note
G1501094	<b>G1551129</b>	Plug Cushion Rubber	4	80	123	
G1501158	<b>G1501155</b>	Screw,M3×10 Pan Hd.Phillips With SW&W	1	97	114	
G1501158	<b>G1501155</b>	Screw,M3×10 Pan Hd.Phillips With SW&W	1	97	125	
G1501158	<b>G1501155</b>	Screw,M3×10 Pan Hd.Phillips With SW&W	1	97	133	

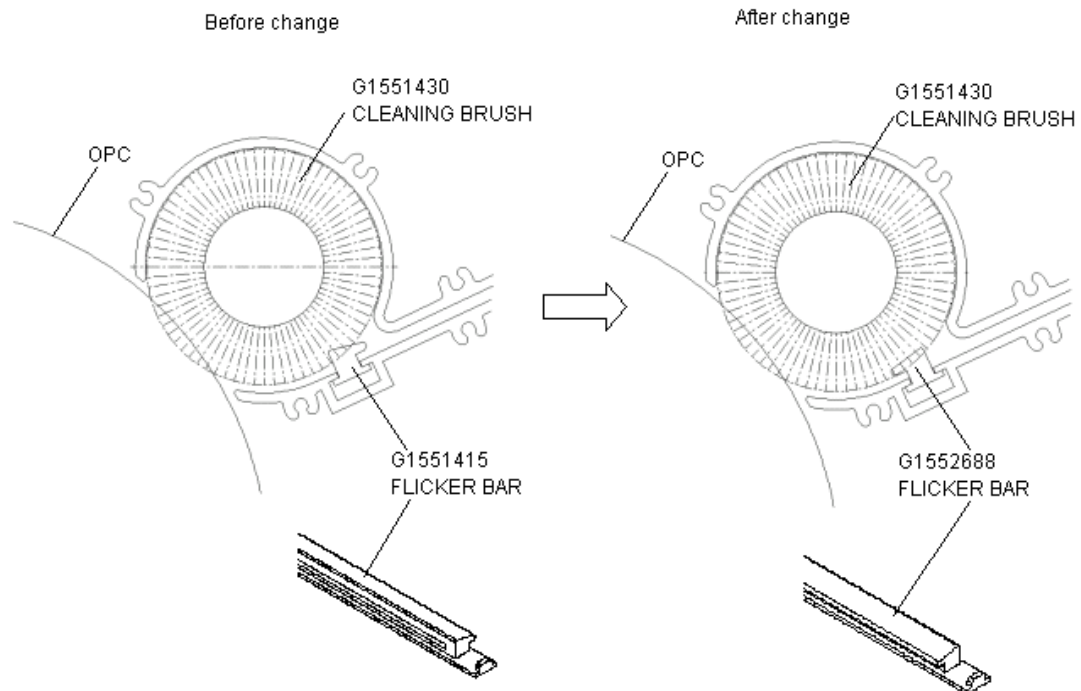


Model: EMP156		Date: 20-Feb-06	No.: MG155004
Modified Article: FLICKER BAR		Prepared by: Y.Minakawa	
From: 2nd Tech. Support Sec. Service Support Dept.			
Reason for Modification:	<input type="checkbox"/> Parts catalog correction <input type="checkbox"/> Vendor change <input type="checkbox"/> Other <input type="checkbox"/> To facilitate assembly <input checked="" type="checkbox"/> To improve reliability <input type="checkbox"/> To meet standards <input type="checkbox"/> Part standardization <input type="checkbox"/> Product Safety    (      )		

Old part number	New part number	Description	Q'ty	Int	Page	Index	Note
G1551415	G1552688	Flicker Bar	1	X/O	77	23	

**Change:** The shape of the flicker bar was changed.

**Reason:** To improve the cleaning of the OPC drum.



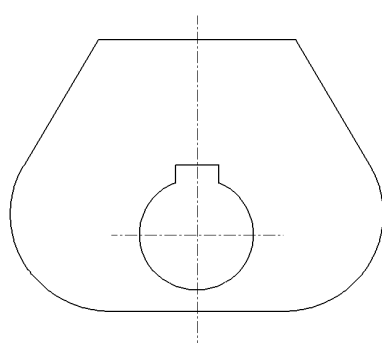
Model: EMP156		Date: 20-Feb-06	No.: MG155005
Modified Article: BR CAM ON THE FUSER UNIT		Prepared by: Y.Minakawa	
From: 2nd Tech. Support Sec. Service Support Dept.			
Reason for Modification:	<input type="checkbox"/> Parts catalog correction <input type="checkbox"/> Vendor change <input type="checkbox"/> Other <input type="checkbox"/> To facilitate assembly <input checked="" type="checkbox"/> To improve reliability <input type="checkbox"/> To meet standards <input type="checkbox"/> Part standardization <input type="checkbox"/> Product Safety    (      )		

Old part number	New part number	Description	Q'ty	Int	Page	Index	Note
G1551228	G1551228A	Fuser Ass'y	1	X/O	53	1	
G1552217	G1552689	BA CAM	2	X/O	53	26	

**Change:** To make it easier to clear paper jams in the fuser unit.

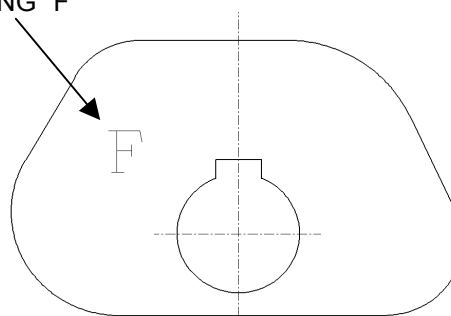
**Reason:** The shape of the BR cam was changed.

Before change



After change

MARKING "F"



### RCL (Japan) Production

MODEL NAME	V/Hz	DESTINATION	CODE	SERIAL NO.
EMP156	200,208,220,230,240V 60Hz	USA	G155-17	Q4950940007

Model: EMP156		Date: 20-Feb-06	No.: MG155006
Modified Article: STACKER PAPER FEED 2		Prepared by: Y.Minakawa	
From: 2nd Tech. Support Sec. Service Support Dept.			
Reason for Modification:	<input type="checkbox"/> Parts catalog correction <input type="checkbox"/> Vendor change <input type="checkbox"/> Other <input type="checkbox"/> To facilitate assembly <input checked="" type="checkbox"/> To improve reliability <input type="checkbox"/> To meet standards <input type="checkbox"/> Part standardization <input type="checkbox"/> Product Safety    (      )		

Old part number	New part number	Old Description	New Description	Q'ty	Int	Page	Index	Note
G1501065	G1552664	EXTENSION SPRING	PRESSURE ROLL SPRING2	6	X/O	89	92	
				2	X/O	89	106	
				2	X/O	89	123	

**Change:** The tension of the tension spring was reduced.

**Reason:** To make adjustments easier when the container stacker is installed.

Model: EMP156		Date: 28-Feb-06	No.: MG155007
Modified Article: OC342 ASS'Y		Prepared by: Y.Minakawa	
From: 1st Tech. Support Sec. Service Support Dept.			
Reason for Modification:	<input type="checkbox"/> Parts catalog correction <input type="checkbox"/> Vendor change <input type="checkbox"/> Other <input type="checkbox"/> To facilitate assembly <input checked="" type="checkbox"/> To improve reliability <input type="checkbox"/> To meet standards <input type="checkbox"/> Part standardization <input type="checkbox"/> Product Safety    (     )		

Old part number	New part number	Description	Q'ty	Int	Page	Index	Note
G1551535	<b>G1552690</b>	OC342 ASS'Y	1	X/O	13	34	

**Change:** A CRC function was added to the OC342 assembly.

**Reason:** To increase the accuracy of print data processing.

**RCL (Japan) Production**

MODEL NAME	V/Hz	DESTINATION	CODE	SERIAL NO.
EMP156	380,400,415V 50Hz	Europe	G155-27	Q4950800015

Model: EMP156		Date: 28-Feb-06	No.: MG155008
Modified Article: Engine and HCF cover		Prepared by: Y.Minakawa	
From: 2nd Tech. Support Sec. Service Support Dept.			
Reason for Modification:	<input type="checkbox"/> Parts catalog correction <input type="checkbox"/> Vendor change <input type="checkbox"/> Other <input type="checkbox"/> To facilitate assembly <input checked="" type="checkbox"/> To improve reliability <input type="checkbox"/> To meet standards <input type="checkbox"/> Part standardization <input type="checkbox"/> Product Safety    (      )		

Old part number	New part number	Description	Q'ty	Int	Page	Index	Note
	<b>G1552665</b>	DEV FAN(2) HOLDER	1		15	461	New Index
	<b>G1501116</b>	DC FAN- 3.4W	2		15	462	New Index
	<b>G1551040</b>	BIND SCREW M3X35	4		15	463	New Index
	<b>G1501035</b>	FLANGE NUT	4		15	464	New Index
	<b>G1552667</b>	EDGINE	1		15	465	New Index
	<b>G1501014</b>	BIND SCREW M4X8	5		15	466	New Index
	<b>G1552666</b>	LH BLIND PLATE	1		15	468	New Index
	<b>G1501014</b>	BIND SCREW M4X8	3		15	469	New Index
G1551917	<b>G1552672</b>	DEV BOTTOM PLATE(H2)	1	X/O	51	228	
G1551295	<b>G1552674</b>	SIDE COVER L(W) ASSY	1	X/O	79	131	
G1552413	<b>G1552671</b>	REAR COVER(LT2)	1	X/O	119	16	
	<b>G1552673</b>	EXHAUST DUCT	1		119	39	New Index
	<b>G1501160</b>	SCREW M4X8	2		119	40	New Index
G1552539		INNER COVER	2→1		119	69	
G1501162		SCREW M4X12	6→3		119	70	

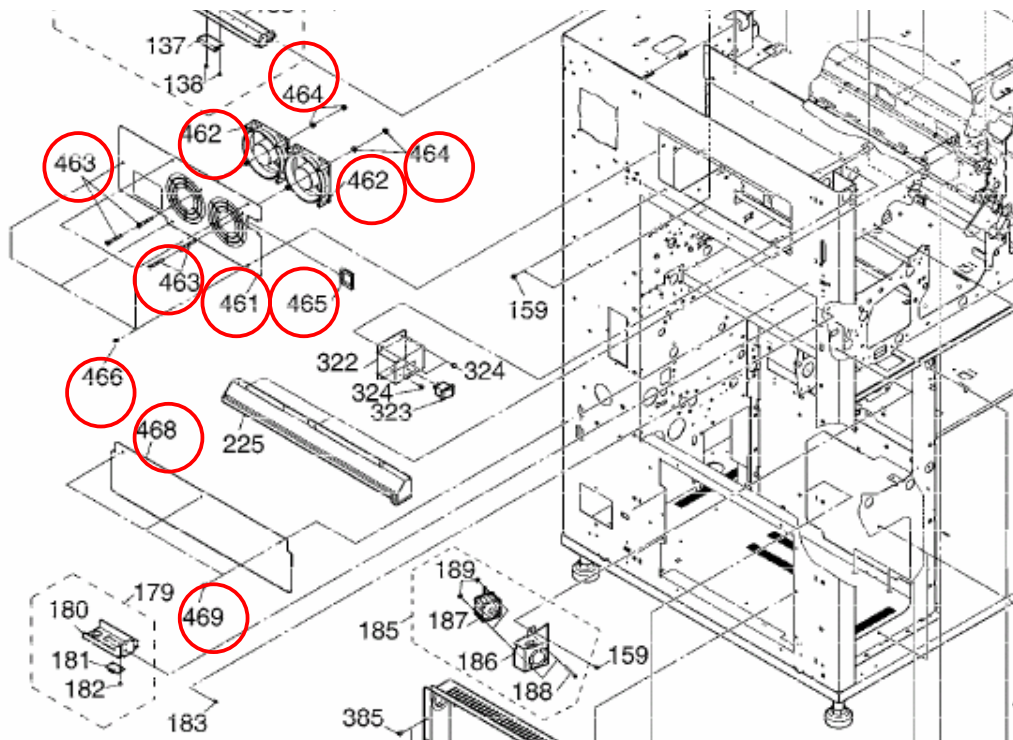
**Change:** Two fans and an air duct were added.

**Reason:** To improve the airflow around the engine.

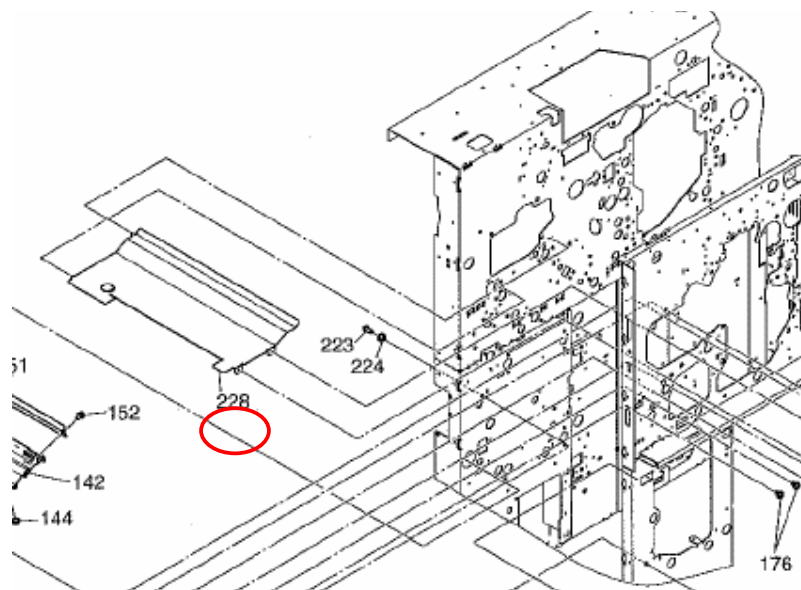
**Note:** This improves the image density when 30K or more continuous prints are made in high-temperature environments.

**Important:** When you install any of the new parts for the first time, make sure to install the new parts **together as a set**.

## Pg. 12



## Pg. 50

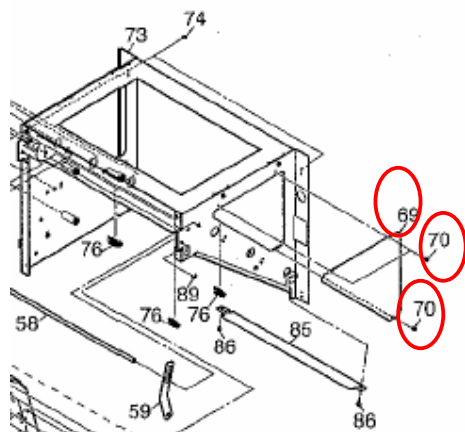






Model: EMP156	Date: 28-Feb-06	No.: MG155008
---------------	-----------------	---------------

Pg. 118



## RCL (Japan) Production

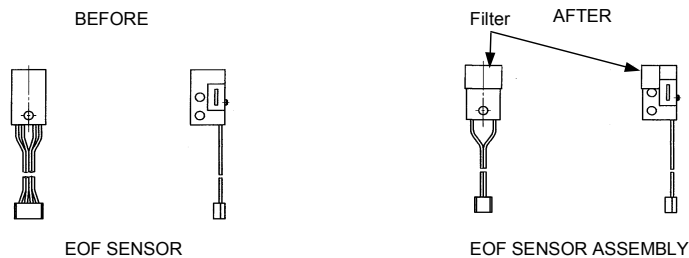
MODEL NAME	V/Hz	DESTINATION	CODE	SERIAL NO.
EMP156	380,400,415/50	Europe	G155-27	Q4950800015
High Capacity Feeder 1	200,208,220,230,240 /50,60	USA, Europe	G867-00	Q6150820011

Model: EMP156		Date: 28-Feb-06	No.: MG155009
Modified Article: Eof Sensor		Prepared by: Y.Minakawa	
From: 2nd Tech. Support Sec. Service Support Dept.			
Reason for Modification:	<input type="checkbox"/> Parts catalog correction <input type="checkbox"/> Vendor change <input type="checkbox"/> Other <input type="checkbox"/> To facilitate assembly <input checked="" type="checkbox"/> To improve reliability <input type="checkbox"/> To meet standards <input type="checkbox"/> Part standardization <input type="checkbox"/> Product Safety    (     )		

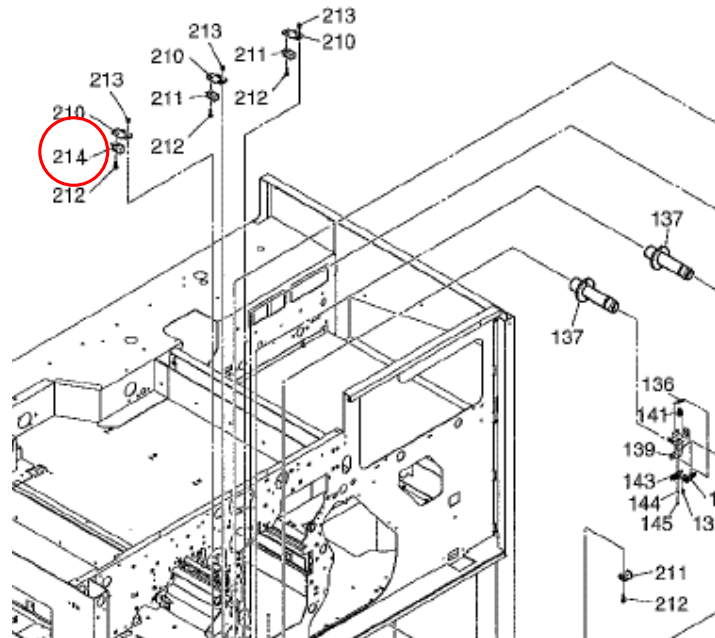
Old part number	New part number	Description	Q'ty	Int	Page	Index	Note
G1501106		Eof Sensor	4→3		21	211	
	<b>G1552683</b>	Eof Sensor Assy	1	X/O	21	214	New Index

**Change:** A filter was added to one of the EOF sensors.

**Reason:** To increase the accuracy of detection for thin paper types.



Pg. 20



**RCL (Japan) Production**

MODEL NAME	V/Hz	DESTINATION	CODE	SERIAL NO.
EMP156	200,208,220,230,240V 60Hz	USA	G155-17	Q4950940007

Reissued:29-Mar-06

Model: EMP156	Date: 28-Feb-06	No.: MG155010a
---------------	-----------------	----------------

## MB Correction

The items in bold italics have been corrected or added.

Modified Article: FUSER LATCH		Prepared by: Y.Minakawa	
From: 2nd Tech. Support Sec. Service Support Dept.			
Reason for Modification:	<input type="checkbox"/> Parts catalog correction	<input type="checkbox"/> Vendor change	<input type="checkbox"/> Other
	<input type="checkbox"/> To facilitate assembly	<input checked="" type="checkbox"/> To improve reliability	<input type="checkbox"/> To meet standards ( )
	<input type="checkbox"/> Part standardization	<input type="checkbox"/> Product Safety	

Old part number	New part number	Description	Q'ty	Int	Page	Index	Note
G1551712	G1552695	Fuser Latch	1	X/O	53	449	

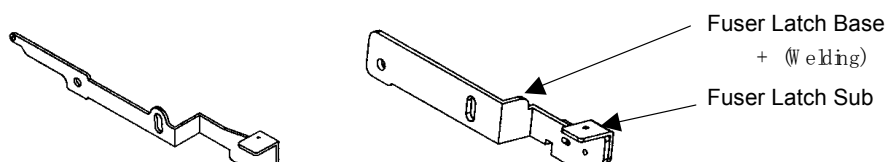


**Change:** The shape of the fuser latch was changed.

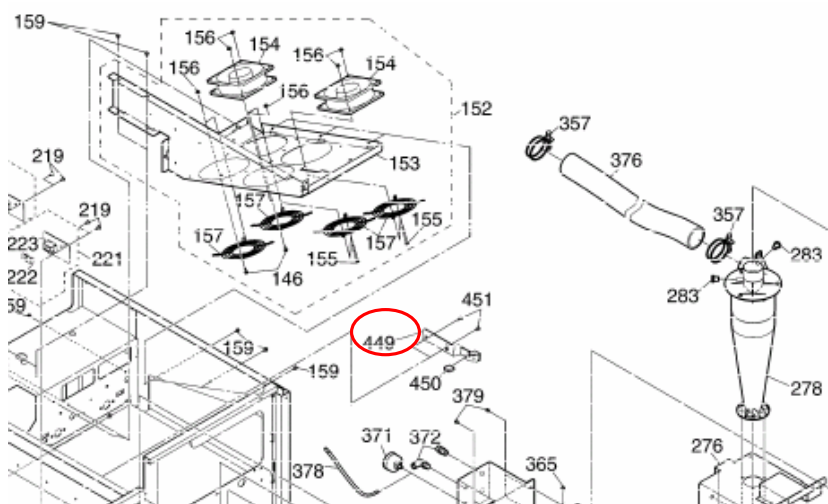
**Reason:** To connect the fusing unit to the mainframe more securely.

**Before Change]**  
metal thickness :2mm

**After Change]**  
metal thickness :3mm



Pg. 52



## RCL (Japan) Production

MODEL NAME	V/Hz	DESTINATION	CODE	SERIAL NO.
EMP156	200,208,220,230,240 / 60	USA	G155-17	Q4950940007
EMP156	380,400,415 50Hz	Europe	G155-27	First Production

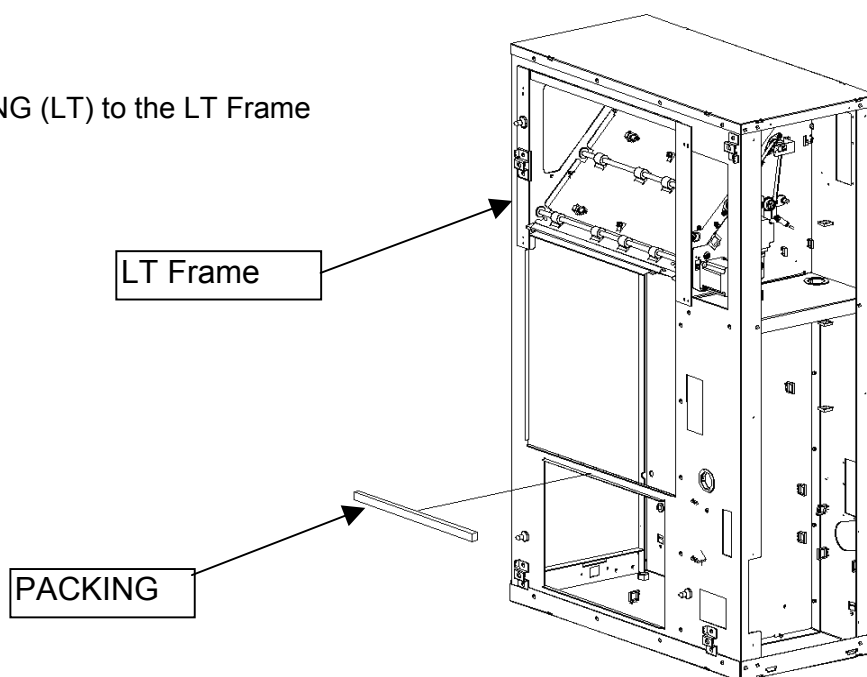
Model: EMP156		Date: 28-Feb-06	No.: MG155011
Modified Article: LT FRAME ASS'Y		Prepared by: Y.Minakawa	
From: 2nd Tech. Support Sec. Service Support Dept.			
Reason for Modification:	<input type="checkbox"/> Parts catalog correction <input type="checkbox"/> Vendor change <input type="checkbox"/> Other <input type="checkbox"/> To facilitate assembly <input checked="" type="checkbox"/> To improve reliability <input type="checkbox"/> To meet standards <input type="checkbox"/> Part standardization <input type="checkbox"/> Product Safety    (      )		

Old part number	New part number	Description	Q'ty	Int	Page	Index	Note
	<b>G1552708</b>	PACKING (LT)	1		119	8	

**Change:** A sponge guide was added to the LT frame assembly.

**Reason:** To make sure that jammed paper does not get stuck between the HP PK holder and hopper PK cover.

Added the PACKING (LT) to the LT Frame Assy.



### RCL (Japan) Production

MODEL NAME	V/Hz	DESTINATION	CODE	SERIAL NO.
High Capacity Feeder 1	200,208,220,230,240 /50,60	USA, Europe	G867-00	Q6151270010

**Reissued:29-Mar-06**

Model: EMP156	Date: 28-Feb-06	No.: MG155012a
---------------	-----------------	----------------

**MB Correction**

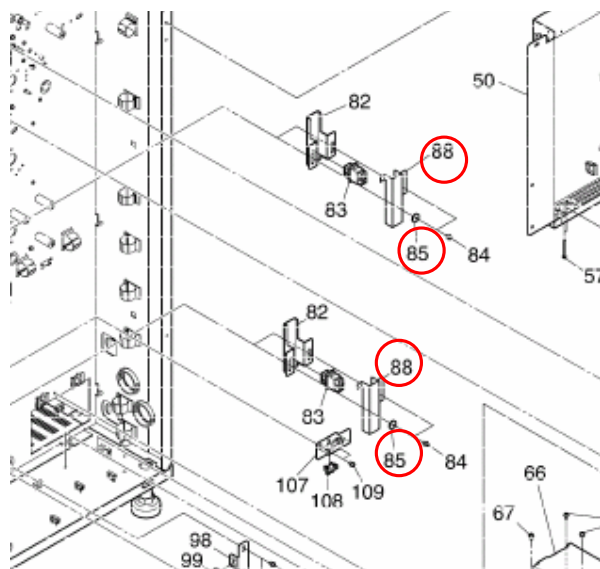
The items in bold italics have been corrected or added.

Modified Article: Stacker cable		Prepared by: Y.Minakawa	
From: 2nd Tech. Support Sec. Service Support Dept.			
Reason for Modification:	<input type="checkbox"/> Parts catalog correction	<input type="checkbox"/> Vendor change	<input type="checkbox"/> Other
	<input type="checkbox"/> To facilitate assembly	<input checked="" type="checkbox"/> To improve reliability	<input type="checkbox"/> To meet standards
	<input type="checkbox"/> Part standardization	<input type="checkbox"/> Product Safety	( )

Old part number	New part number	Description	Q'ty	Int	Page	Index	Note
G1551006	G1551006	Washer	4-2	-	83	85	
	<b>G1552707</b>	ST Sensor Cable Cover	2	-	83	88	New Index

**Change:** A protective cover was added to the ST sensor cable.

**Reason:** To protect the ST sensor cable when the lift moves. (The container arm might touch the ST sensor cable).

**Pg. 82**

**RCL (Japan) Production**

MODEL NAME	V/Hz	DESTINATION	CODE	SERIAL NO.
Standard Stacker EMP156	200,208,220,230,240 / 60	USA	G865-01	Q6650950006
Standard Stacker EMP156	200,208,220,230,240 / 60	Europe	G865-01	First Production
Additional Stacker EMP156	200,208,220,230,240 /50,60	USA	G865-00	Q5950960006
Additional Stacker EMP156	200,208,220,230,240 /50,60	Europe	G865-00	First Production





Model: EMP156		Date: 14-Mar-06	No.: MG155013
Modified Article: PAPER SUPPORTER		Prepared by: Y.Minakawa	
From: 2nd Tech. Support Sec. Service Support Dept.			
Reason for Modification:	<input type="checkbox"/> Parts catalog correction <input type="checkbox"/> Vendor change <input type="checkbox"/> Other <input type="checkbox"/> To facilitate assembly <input checked="" type="checkbox"/> To improve reliability <input type="checkbox"/> To meet standards (      ) <input type="checkbox"/> Part standardization <input type="checkbox"/> Product Safety		

Old part number	New part number	Old Description	New Description	Q'ty	Int	Page	Index	Note
G1551874	G1552740	Paper Supporter (L) W Ass'y	Paper Supporter (L) Ass'y	1	X/O	35	40	
G1552493	G1552741	Paper Supporter (L) W Ass'y	Paper Supporter (L) Ass'y	1	X/O	117	40	
G1551876		Shutter Plate(2)	-	1-0	-	33	111	Delete
						35	111	
						37	111	
						115	111	
						117	111	

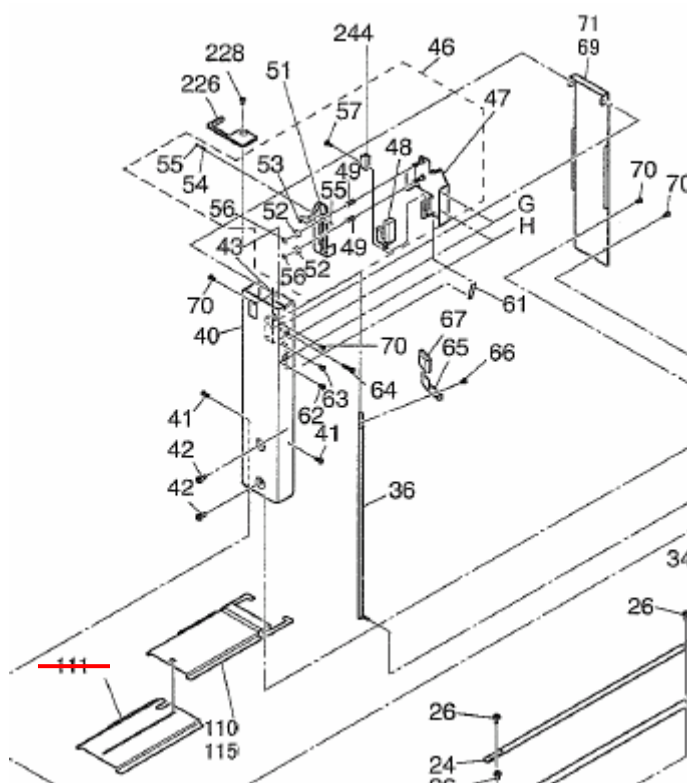
## Change:

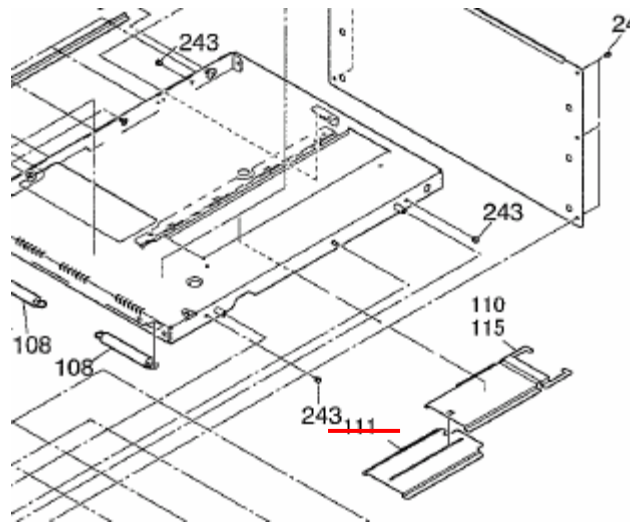
- Two support guides were added to the paper supporter assembly.
- The shutter plate (2) was deleted.

## Reason:

- To make sure that the screws do not touch the hopper table.
- Sometimes the shutter plate (2) can be damaged during operation.

Pg 34, 116



**Pg 32, 36, 114**

※

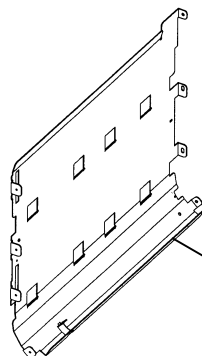
Model: EMP156		Date: 14-Mar-06	No.: MG155014
Modified Article: PAPER GUIDE 4(W) ASS'Y		Prepared by: Y.Minakawa	
From: 2nd Tech. Support Sec. Service Support Dept.			
Reason for Modification:	<input type="checkbox"/> Parts catalog correction <input type="checkbox"/> Vendor change <input type="checkbox"/> Other <input type="checkbox"/> To facilitate assembly <input checked="" type="checkbox"/> To improve reliability <input type="checkbox"/> To meet standards (      ) <input type="checkbox"/> Part standardization <input type="checkbox"/> Product Safety		

Old part number	New part number	Description	Q'ty	Int	Page	Index	Note
G1551379	G1552728	Paper Guide 4 (W) Ass'y	1	X/O	89	73	

**Change:** A reinforcing plate was added to the paper guide assembly.

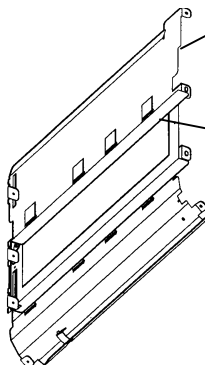
**Reason:** To make sure the paper guide assembly does not vibrate when the paper guide is opened or closed.

Before Change】



Paper Guide 4(W) Assembly.

After Change】



Reinforcement parts

## RCL (Japan) Production

MODEL NAME	V/Hz	DESTINATION	CODE	SERIAL NO.
Additional Stacker EMP156	200,208,220,230,240 /50,60	USA/Europe	G865-00	Q5950260013
Standard Stacker EMP156	200,208,220,230,240 /50,60	USA/Europe	G865-01	Q6650250019

**Reissued:29-Mar-06**

Model: EMP156	Date: 14-Mar-06	No.: MG155015a
---------------	-----------------	----------------

**MB Correction**

The items in bold italics have been corrected or added.

Modified Article: OFF SET PF ASS'Y(H)		Prepared by: Y.Minakawa	
From: 2nd Tech. Support Sec. Service Support Dept.			
Reason for Modification:	<input type="checkbox"/> Parts catalog correction	<input type="checkbox"/> Vendor change	<input type="checkbox"/> Other
	<input type="checkbox"/> To facilitate assembly	<input checked="" type="checkbox"/> To improve reliability	<input type="checkbox"/> To meet standards ( )
	<input type="checkbox"/> Part standardization	<input type="checkbox"/> Product Safety	

Old part number	New part number	Description	Q'ty	Int	Page	Index	Note
G8511205	G1552676	Paddle	12	X/O	91	22	

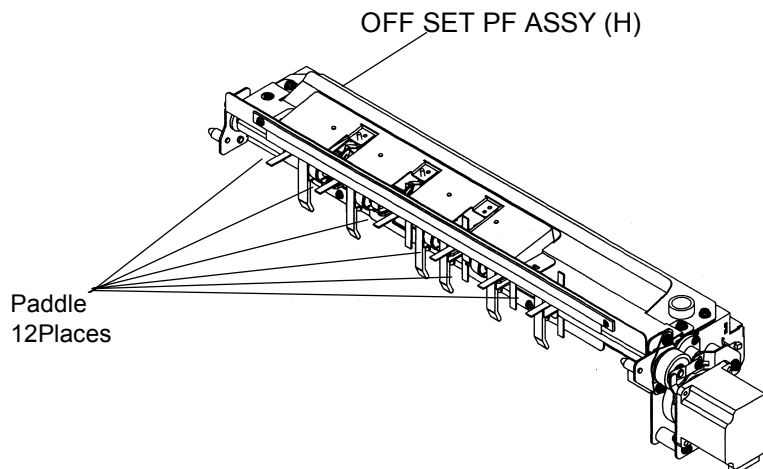
**Change:** The material of the paddles was changed.

**Reason:** To further ensure that the paddles do not bend and cause a paper stack jam.

**Before Change]**
G8511205: Paddle

1.Material :rubber

2.Wick line :No


**After Change]**
G1552676: Paddle

1.Material : rubber

2.Wick line : Yes

**RCL (Japan) Production**

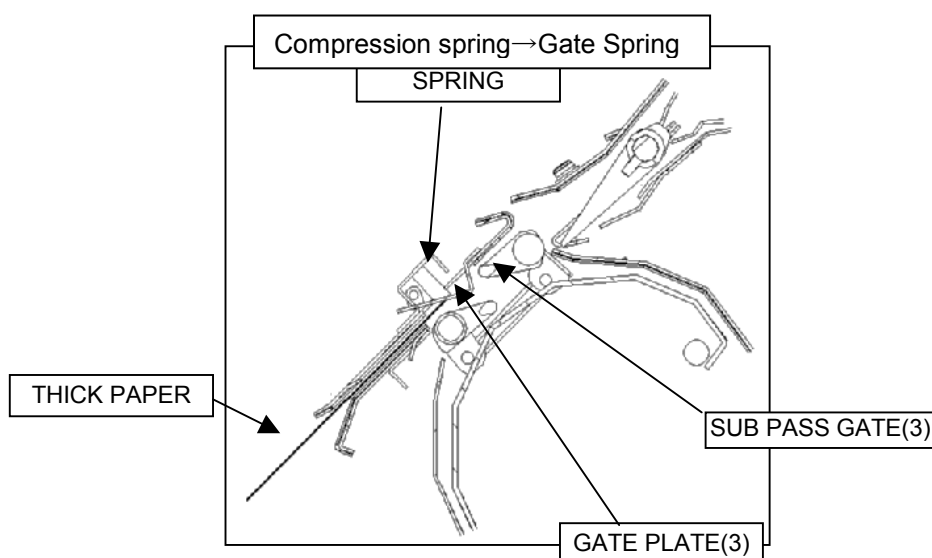
MODEL NAME	V/Hz	DESTINATION	CODE	SERIAL NO.
Standard Stacker EMP156	200,208,220,230,240 / 50,60	USA	G865-01	Q6650950007
Standard Stacker EMP156	200,208,220,230,240 / 50,60	Europe	G865-01	First Production
Additional Stacker EMP156	200,208,220,230,240 / 50,60	USA	G865-00	Q5950960009
Additional Stacker EMP156	200,208,220,230,240 / 50,60	Europe	G865-00	First Production

Model: EMP156		Date: 14-Mar-06	No.: MG155016
Modified Article: SPRING OF GATE PLATE(3)		Prepared by: Y.Minakawa	
From: 2nd Tech. Support Sec. Service Support Dept.			
Reason for Modification:	<input type="checkbox"/> Parts catalog correction	<input type="checkbox"/> Vendor change	<input type="checkbox"/> Other
	<input type="checkbox"/> To facilitate assembly	<input checked="" type="checkbox"/> To improve reliability	<input type="checkbox"/> To meet standards
	<input type="checkbox"/> Part standardization	<input type="checkbox"/> Product Safety	( )

Old part number	New part number	New Description	New Description	Q'ty	Int	Page	Index	Note
G1551071	G1552675	Compression Spring	Gate Spring	1	X/O	41	15	

**Change:** The strength of the gate spring was increased.

**Reason:** To make sure that paper 199g/m2 or heavier does not contact the sub pass gate (3).



### RCL (Japan) Production

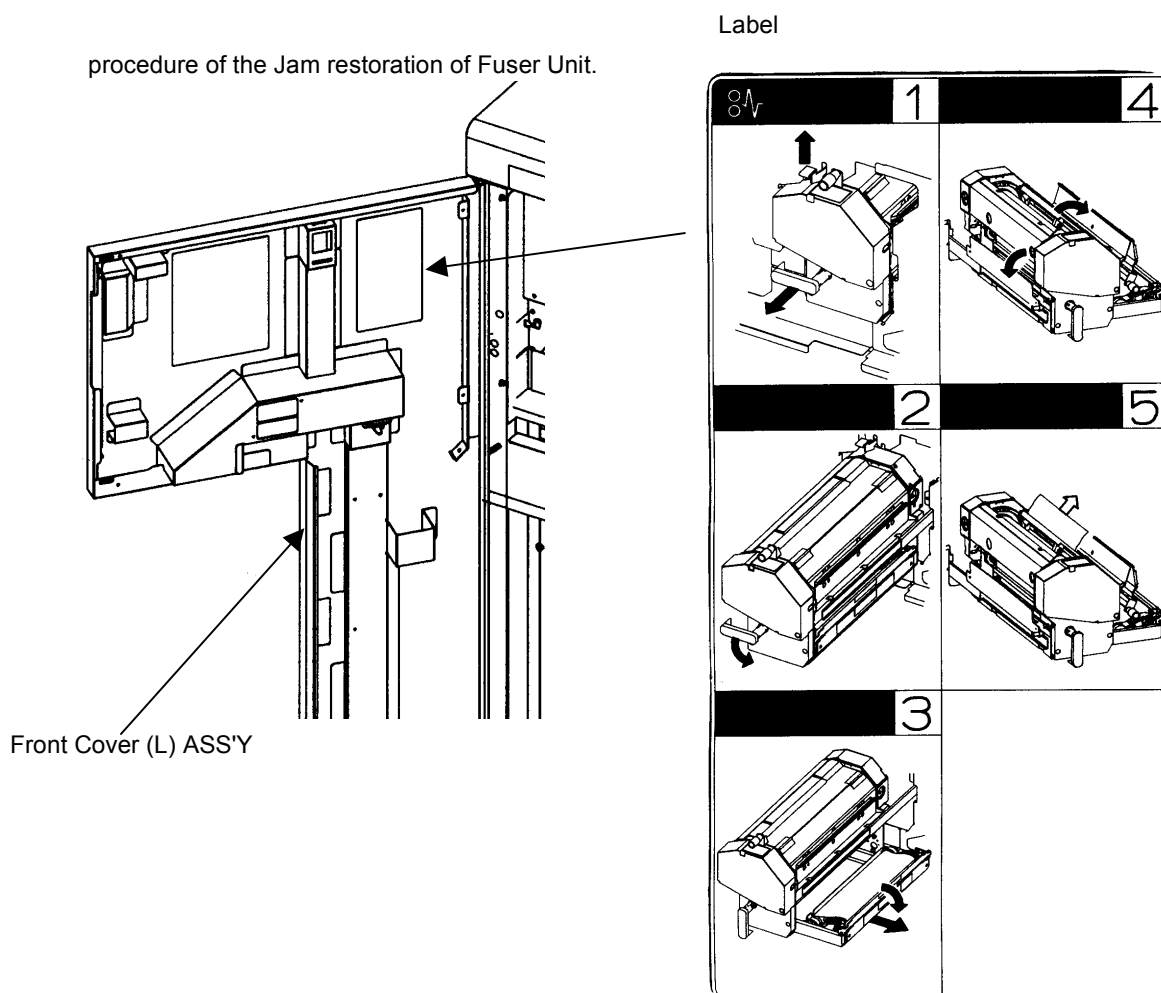
MODEL NAME	V/Hz	DESTINATION	CODE	SERIAL NO.
EMP156	380,400,415V 50Hz	Europe	G155-27	Q4950840001

Model: EMP156		Date: 14-Mar-06	No.: MG155017
Modified Article: FRONT COVER(L) ASS'Y		Prepared by: Y.Minakawa	
From: 2nd Tech. Support Sec. Service Support Dept.			
Reason for Modification:	<input type="checkbox"/> Parts catalog correction <input type="checkbox"/> Vendor change <input checked="" type="checkbox"/> Other <input type="checkbox"/> To facilitate assembly <input type="checkbox"/> To improve reliability <input type="checkbox"/> To meet standards <input type="checkbox"/> Part standardization <input type="checkbox"/> Product Safety    (      )		

Old part number	New part number	Description	Q'ty	Int	Page	Index	Note
G1551317	G1552723	Front Cover(L) Ass'y	1	X/O	79	1	

**Change:** A label was added to the inside of the front cover, which shows how to clear fusing jams.

**Reason:** To make it easier for the user to clear fusing jams.



## RCL (Japan) Production

MODEL NAME	V/Hz	DESTINATION	CODE	SERIAL NO.
EMP156	200,208,220,230,240V 60Hz	USA	G155-17	Q4950940007



**Reissued:29-Mar-06**

Model: EMP156	Date: 14-Mar-06	No.: MG155018a
---------------	-----------------	----------------

**MB Correction**

The items in bold italics have been corrected or added.

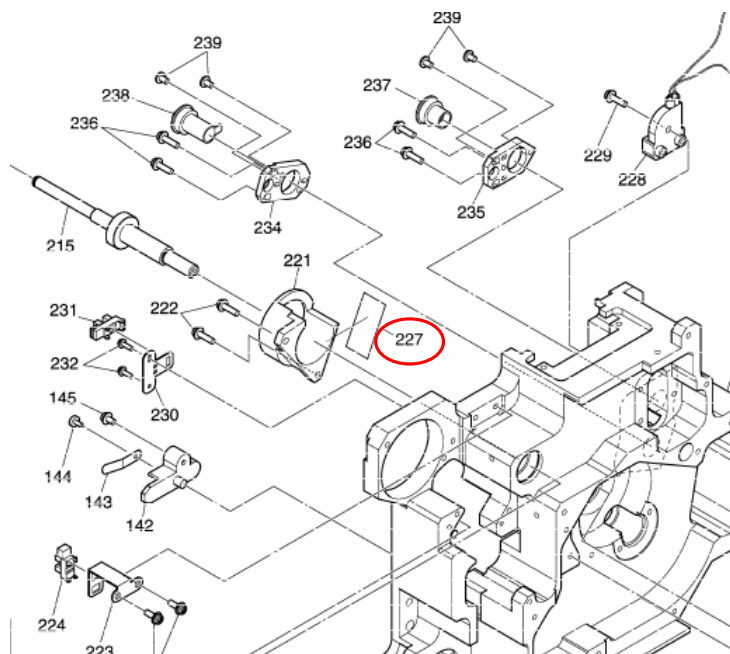
Modified Article: DEV UNIT ASS'Y		Prepared by: Y.Minakawa	
From: 2nd Tech. Support Sec. Service Support Dept.			
Reason for Modification:	<input type="checkbox"/> Parts catalog correction	<input type="checkbox"/> Vendor change	<input type="checkbox"/> Other
	<input type="checkbox"/> To facilitate assembly	<input checked="" type="checkbox"/> To improve reliability	<input type="checkbox"/> To meet standards
	<input type="checkbox"/> Part standardization	<input type="checkbox"/> Product Safety	(      )

Old part number	New part number	Description	Q'ty	Int	Page	Index	Note
G1551517	G1552726	Dev Upper Cover Ass'y	1	X/O	71	163	
G1551238	G1552727	Dev Unit Ass'y	1	X/O	71	1	
	G1552682	CL SENSOR GUARD	1	-	65	227	New Index
	G1552680	TONER SHIELD(S1)	1	-	17	196	New Index
	G1552681	TONER SHIELD(S2)	1	-	17	197	New Index

**Change:** The seal for the development unit was strengthened.

**Reason:** To further ensure that toner does not leak from the development unit.

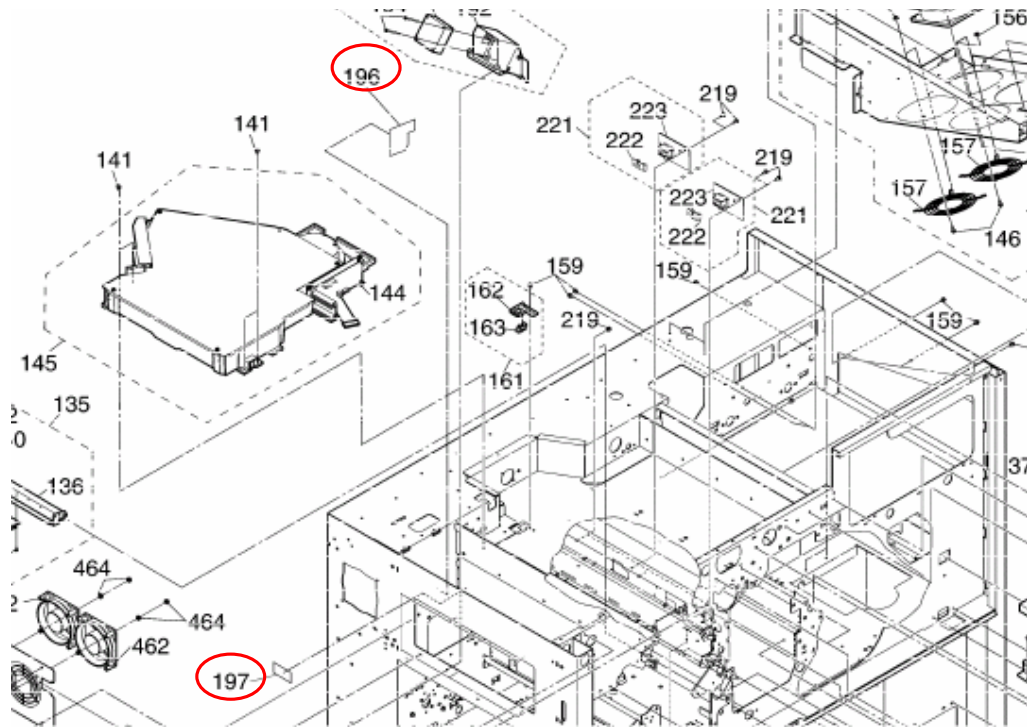
Pg 64



Reissued:29-Mar-06

Model: EMP156	Date: 14-Mar-06	No.: MG155018a
---------------	-----------------	----------------

Pg 16



## RCL (Japan) Production

MODEL NAME	V/Hz	DESTINATION	CODE	SERIAL NO.
EMP156	200,208,220,230,240 /60	USA	G155-17	Q4950940007
EMP156	380,400,415/50	Europe	G155-27	First Production

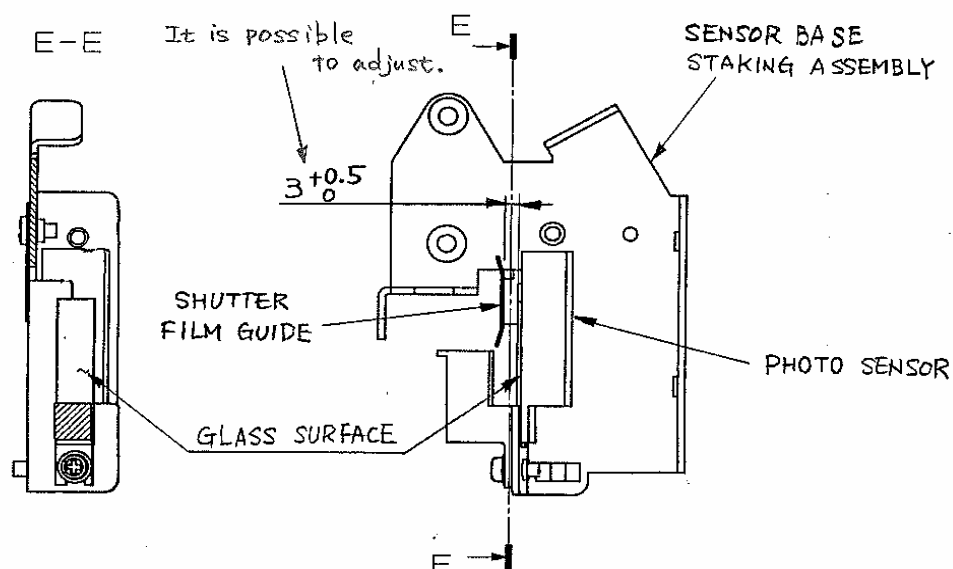
Model: EMP156		Date: 14-Mar-06	No.: MG155019
Modified Article: HEIGHT SENSOR ASSEMBLY		Prepared by: Y.Minakawa	
From: 2nd Tech. Support Sec. Service Support Dept.			
Reason for Modification:	<input type="checkbox"/> Parts catalog correction <input type="checkbox"/> Vendor change <input type="checkbox"/> Other <input type="checkbox"/> To facilitate assembly <input checked="" type="checkbox"/> To improve reliability <input type="checkbox"/> To meet standards (      ) <input type="checkbox"/> Part standardization <input type="checkbox"/> Product Safety		

Old part number	New part number	Description	Q'ty	Int	Page	Old Index	New Index	Note
G1551887	G1552701	Height Sensor Ass'y	1	X/O	35	46	262	
					39			
					117			
G1552352	G1552703	Height Sensor Hook Weld Ass'y	1	X/X	35	51	263	
					39			
					117			
G1551880	G1552700	Sensor Base Staking Ass'y	1	X/X	35	47	264	
					39			
					117			
	G1552702	Shutter Film Guide	1	-	35	-	265	New Index
					39	-	265	
					117	-	265	
	G1552704	Shutter Film	1	-	35	-	266	New Index
					39	-	266	
					117	-	266	
	G1501009	Bind Screw M3X6	1	-	35	-	267	New Index
					39	-	267	
					117	-	267	

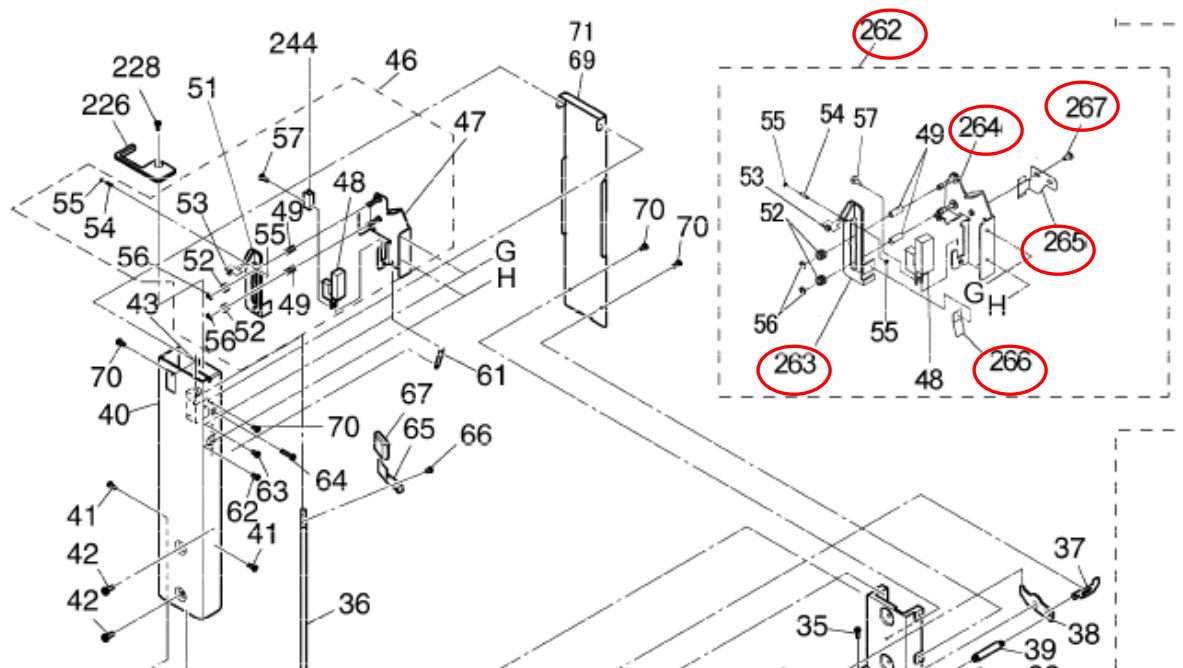
**Change:** An adjustment mechanism was added to the shutter film guide.

**Reason:** To minimize the occurrence of paper mis-feeds and multi-feeds.

**Note:** With this mechanism, you can adjust the paper height sensor to within its specification: 3.0-3.5mm.



Page 34,38,116



MODEL NAME	V/Hz	DESTINATION	CODE	SERIAL NO.
EMP156	200,208,220,230,240/60	USA	G155-17	Q4950940007
High Capacity Feeder 1	200,208,220,230,240/50,60	USA/Europe	G867-00	Q6150970009
High Capacity Feeder 2	200,208,220,230,240/50,60	USA/Europe	G866-00	Q6050980010

Model: EMP156		Date: 14-Mar-06	No.: MG155020
Modified Article: BACK UP ROLL		Prepared by: Y.Minakawa	
From: 2nd Tech. Support Sec. Service Support Dept.			
Reason for Modification:	<input type="checkbox"/> Parts catalog correction <input type="checkbox"/> Vendor change <input type="checkbox"/> Other <input type="checkbox"/> To facilitate assembly <input checked="" type="checkbox"/> To improve reliability <input type="checkbox"/> To meet standards <input type="checkbox"/> Part standardization <input type="checkbox"/> Product Safety    (     )		

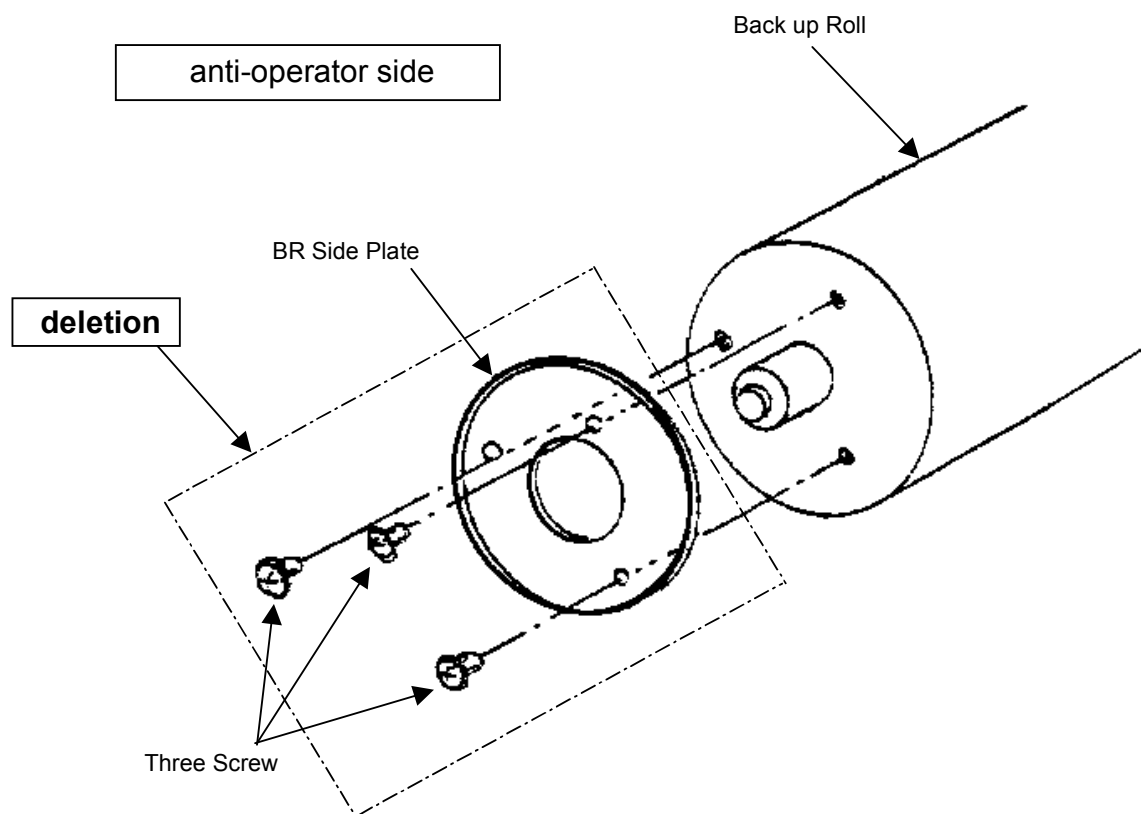
Old part number	New part number	Description	Q'ty	Int	Page	Index	Note
G1551246	G1552694	Back up Roll	1	X/O	53	117	

**<Reason>**

Prevention of partial wear-out of the Heat Roll.

**<Change>**

To change the behavior of rubber on the anti-operator side, the BR Side Plate is removed.


**RCL (Japan) Production**

MODEL NAME	V/Hz	DESTINATION	CODE	SERIAL NO.
EMP156	380,400,415V 50Hz	Europe	G155-27	Q4950840001

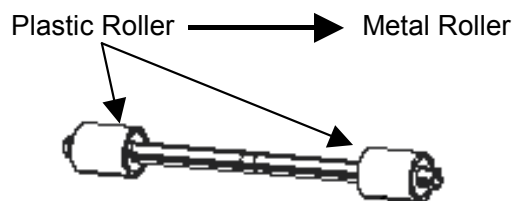


Model: EMP156		Date: 14-Mar-06	No.: MG155021
Modified Article: PF Pressure Roller		Prepared by: Y.Minakawa	
From: 2nd Tech. Support Sec. Service Support Dept.			
Reason for Modification:	<input type="checkbox"/> Parts catalog correction	<input type="checkbox"/> Vendor change	<input type="checkbox"/> Other
	<input type="checkbox"/> To facilitate assembly	<input checked="" type="checkbox"/> To improve reliability	<input type="checkbox"/> To meet standards
	<input type="checkbox"/> Part standardization	<input type="checkbox"/> Product Safety	( )

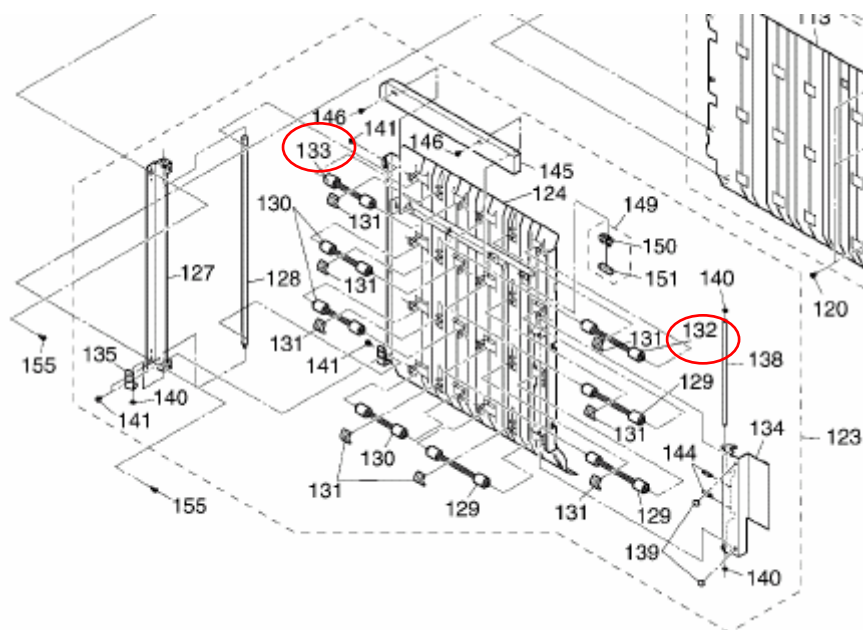
Old part number	New part number	Description	Q'ty	Int	Page	Index	Note
G1551769	-	PF PRESSURE ROLLER ASS'Y	4-3	-	113	129	
G1551771	-	PF PRESSURE ROLLER ASS'Y	4-3	-	113	130	
-	<b>G1552001</b>	PF PRESSURE ROLLER 2 ASS'Y	1	-	113	132	
-	<b>G1552002</b>	PF PRESSURE ROLLER 2 ASS'Y	1	-	113	133	

**Change:** The material of the PF pressure roller was changed from plastic to metal.

**Reason:** To minimize static electricity buildup, which improves paper registration with long paper types.



Pg 112



**Reissued:29-Mar-06**

Model: EMP156	Date: 14-Mar-06	No.: MG155022a
---------------	-----------------	----------------

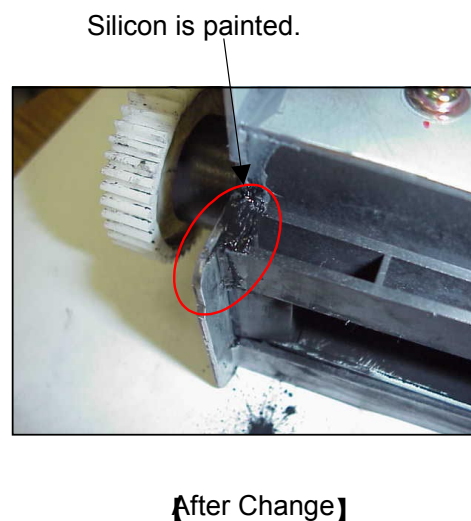
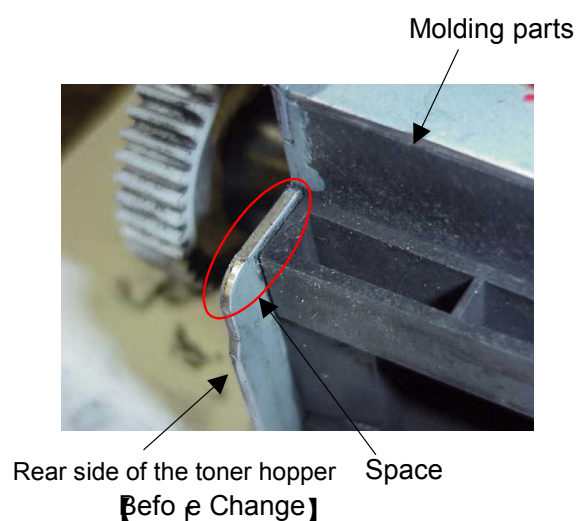
**MB Correction**

The items in bold italics have been corrected or added.

Modified Article: TONER HOPPER UNIT		Prepared by: Y.Minakawa	
From: 2nd Tech. Support Sec. Service Support Dept.			
Reason for Modification:	<input type="checkbox"/> Parts catalog correction	<input type="checkbox"/> Vendor change	<input type="checkbox"/> Other
	<input type="checkbox"/> To facilitate assembly	<input checked="" type="checkbox"/> To improve reliability	<input type="checkbox"/> To meet standards ( )
	<input type="checkbox"/> Part standardization	<input type="checkbox"/> Product Safety	

Old part number	New part number	Description	Q'ty	Int	Page	Index	Note
G1551239	G1552724	Toner Hopper Assy	1	O/O	73	1	
		Toner Supply Unit					
G1551285	G1552725	Toner Hopper Sub Assy	1	O/O	73	3	
		Toner Bank Sub Assy					

**Change:** The seal of the toner hopper unit was made stronger.

**Reason:** To further ensure that toner does not leak from the toner hopper unit.

**RCL (Japan) Production**

MODEL NAME	V/Hz	DESTINATION	CODE	SERIAL NO.
EMP156	200,208,220,230,250/60	USA	G155-17	First Production
EMP156	380,400,415/50	Europe	G155-27	First Production

**Reissued:29-Mar-06**

Model: EMP156	Date: 16-Mar-06	No.: MG155023b
---------------	-----------------	----------------

**MB Correction**

The items in bold italics have been corrected or added.

Modified Article: TRANSFER AND DISCHARGER UNIT		Prepared by: Y.Minakawa	
From: 2nd Tech. Support Sec. Service Support Dept.			
Reason for Modification:	<input type="checkbox"/> Parts catalog correction	<input type="checkbox"/> Vendor change	<input type="checkbox"/> Other
	<input type="checkbox"/> To facilitate assembly	<input checked="" type="checkbox"/> To improve reliability	<input type="checkbox"/> To meet standards
	<input type="checkbox"/> Part standardization	<input type="checkbox"/> Product Safety	( )

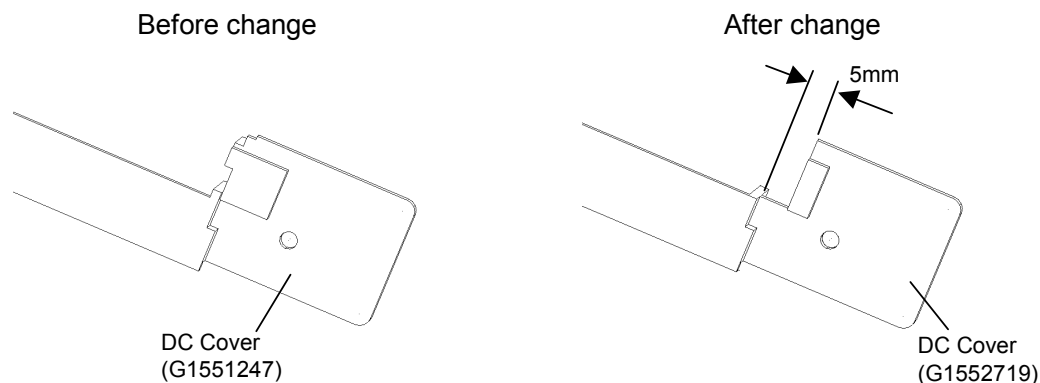
Old part number	New part number	Description	Q'ty	Int	Page	Index	Note
G1551312	G1552742	DISCHARGER ASS'Y	1	X/O	61	90	
G1551247	G1552719	DC COVER	1	X/O	61	97	
G1551998	G1552720	TR CABLE COVER	1	X/O	75	28	
G1551326	G1552743	COROTRON (W) ASSY	1	X/O	75	75	
G1551541	G1552718	COROTRON COVER (F)	1	X/O	75	111	

**Change:**

- The shapes of the DC cover, TR cable cover and corotron cover were changed.***
- A belt support sheet was added to the corotron cover.***

**Reason:**
***DC cover: To improve cleaning.***
***TR cable cover: To ensure the cable does not come loose.***
***Corotron cover: To improve image transfer.***

DC cover:



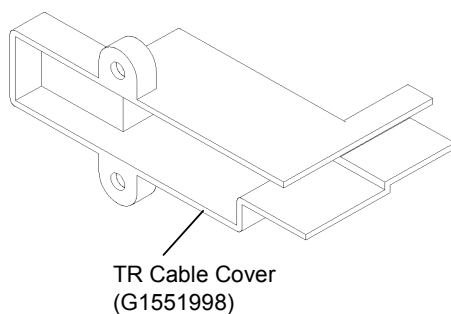


**Reissued:29-Mar-06**

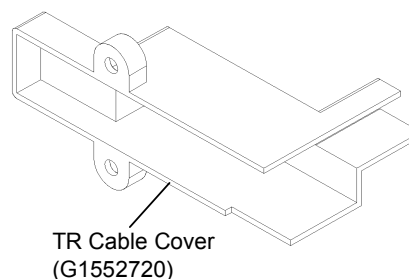
Model: EMP156	Date: 16-Mar-06	No.: MG155023b
---------------	-----------------	----------------

TR cable cover:

Before change

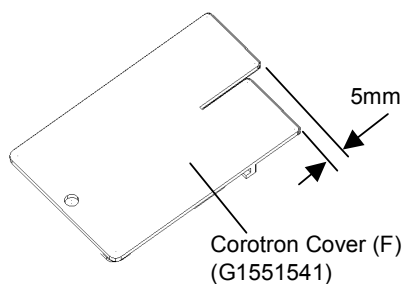


After change

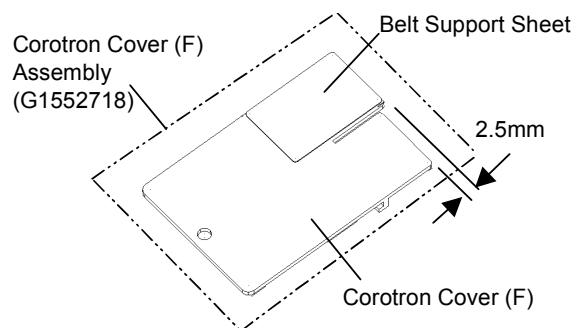


Corotron cover:

Before change



After change


**RCL (Japan) Production**

MODEL NAME	V/Hz	DESTINATION	CODE	SERIAL NO.
EMP156	200,208,220,230,250 / 60	USA	G155-17	Q4951240008
EMP156	380,400,415/ 50	Europe	G155-27	First Production



**Reissued:29-Mar-06**

Model: EMP156	Date: 15-Mar-06	No.: MG155025a
---------------	-----------------	----------------

**MB Correction**

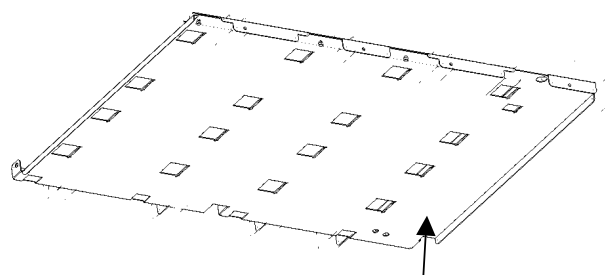
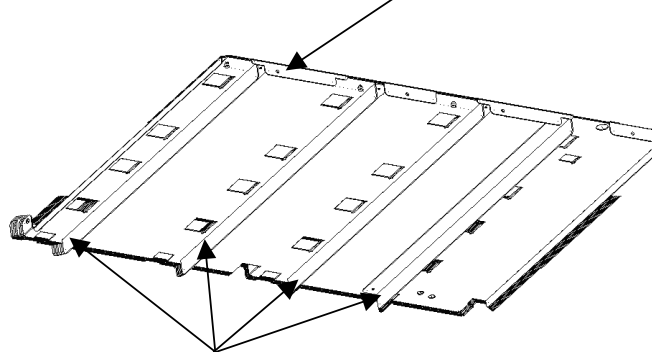
The items in bold italics have been corrected or added.

Modified Article: PAPER GUIDE(4) RIVET ASSY	Prepared by: Y.Minakawa
From: 2nd Tech. Support Sec. Service Support Dept.	
Reason for Modification:	<input type="checkbox"/> Parts catalog correction <input type="checkbox"/> Vendor change <input type="checkbox"/> Other <input type="checkbox"/> To facilitate assembly <input checked="" type="checkbox"/> To improve reliability <input type="checkbox"/> To meet standards <input type="checkbox"/> Part standardization <input type="checkbox"/> Product Safety    (     )

Old part number	New part number	Description	Q'ty	Int	Page	Index	Note
G1552393	G1552729	PAPER GUIDE (L4) RIVET ASSY	1	O/O	95	88	

**Change:** Four ribs were added to the paper guide (L4) rivet assembly.

**Reason:** To strengthen the paper guide (L4) rivet assembly.

**Before Change]**

**PAPER GUIDE(L4) RIVET ASSEMBLY**
**After Change]**

**4 RIBS**
**RCL (Japan) Production**

MODEL NAME	V/Hz	DESTINATION	CODE	SERIAL NO.
Additional Stacker	200,208,220,230,250 /60	USA	G865-00	Q5950960001
Additional Stacker	200,208,220,230,250 /60	Europe	G865-00	First Production

**Reissued:29-Mar-06**

Model: EMP156	Date: 15-Mar-06	No.: MG155026a
---------------	-----------------	----------------

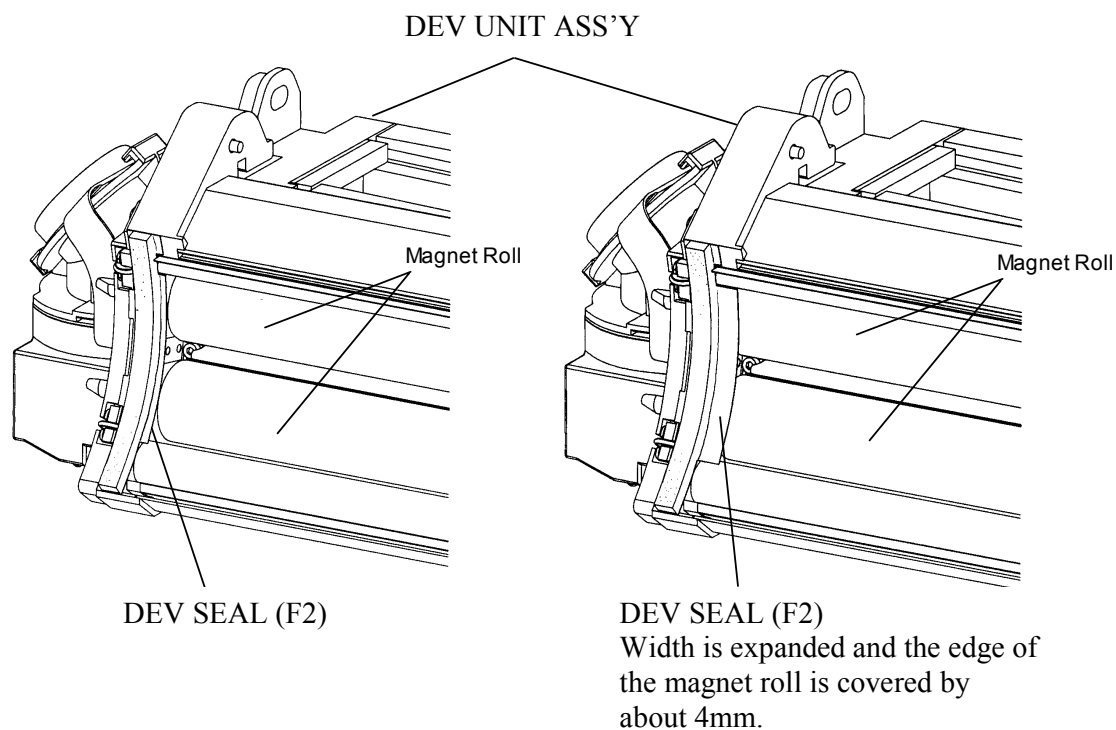
**MB Correction**

The items in bold italics have been corrected or added.

Modified Article: DEV UNIT ASS'Y		Prepared by: Y.Minakawa	
From: 2nd Tech. Support Sec. Service Support Dept.			
Reason for Modification:	<input type="checkbox"/> Parts catalog correction	<input type="checkbox"/> Vendor change	<input type="checkbox"/> Other
	<input type="checkbox"/> To facilitate assembly	<input checked="" type="checkbox"/> To improve reliability	<input type="checkbox"/> To meet standards
	<input type="checkbox"/> Part standardization	<input type="checkbox"/> Product Safety	( )

Old part number	New part number	Description	Q'ty	Int	Page	Index	Note
G1552250	G1552730	Dev Seal(F2)	1	X/O	71	150	
G1552727	G1552732	Dev Unit Ass'y	1	X/O	71	1	

**Change:** The shape of the development seal was changed.

**Reason:** To improve the performance of the development seal.

**RCL (Japan) Production**

MODEL NAME	V/Hz	DESTINATION	CODE	SERIAL NO.
EMP156	200,208,220,230,240 / 60	USA	G155-17	Q4951240008
EMP156	380,400,415/ 50	Europe	G155-27	First Production

Model: EMP156		Date: 16-Mar-06	No.: MG155027
Modified Article: CONTROL BOARD		Prepared by: Y.Minakawa	
From: 2nd Tech. Support Sec. Service Support Dept.			
Reason for Modification:	<input type="checkbox"/> Parts catalog correction <input type="checkbox"/> Vendor change <input checked="" type="checkbox"/> Other <input type="checkbox"/> To facilitate assembly <input type="checkbox"/> To improve reliability <input type="checkbox"/> To meet standards <input type="checkbox"/> Part standardization <input type="checkbox"/> Product Safety    (      )		

Incorrect part number	Correct part number	Incorrect Description	Correct description	Q'ty	Int	Pg.	Index	No te
G1551539	-	Hs103 Assy		1	X/O	83	51	
-	<b>G1552691</b>		<b>Stacker Controlboard</b>					
G1552461	-	Hs104 Assy		1	X/O	103	255	
-	<b>G1552692</b>		<b>Hopper Control Board – 1</b>					

**Change/Reason:** Parts catalog correction.

**Reissued:29-Mar-06**

Model: EMP156	Date: 14-Mar-06	No.: MG155013a
---------------	-----------------	----------------

**MB Correction**

The items in bold italics have been corrected or added.

Modified Article: PAPER SUPPORTER		Prepared by: Y.Minakawa	
From: 2nd Tech. Support Sec. Service Support Dept.			
Reason for Modification:	<input type="checkbox"/> Parts catalog correction	<input type="checkbox"/> Vendor change	<input type="checkbox"/> Other
	<input type="checkbox"/> To facilitate assembly	<input checked="" type="checkbox"/> To improve reliability	<input type="checkbox"/> To meet standards
	<input type="checkbox"/> Part standardization	<input type="checkbox"/> Product Safety	(      )

Old part number	New part number	Old Description	New Description	Q'ty	Int	Page	Index	Note
G1551874	G1552740	Paper Supporter (L) W Ass'y	Paper Supporter (L) Ass'y	1	X/O	35	40	
G1552493	G1552741	Paper Supporter (L) W Ass'y	Paper Supporter (L) Ass'y	1	X/O	117	40	
G1551876		Shutter Plate(2)	-	1-0	-	33	111	Delete
						35	111	
						37	111	
						115	111	
						117	111	

**Change:**

- Two support guides were added to the paper supporter assembly.
- The shutter plate (2) was deleted.

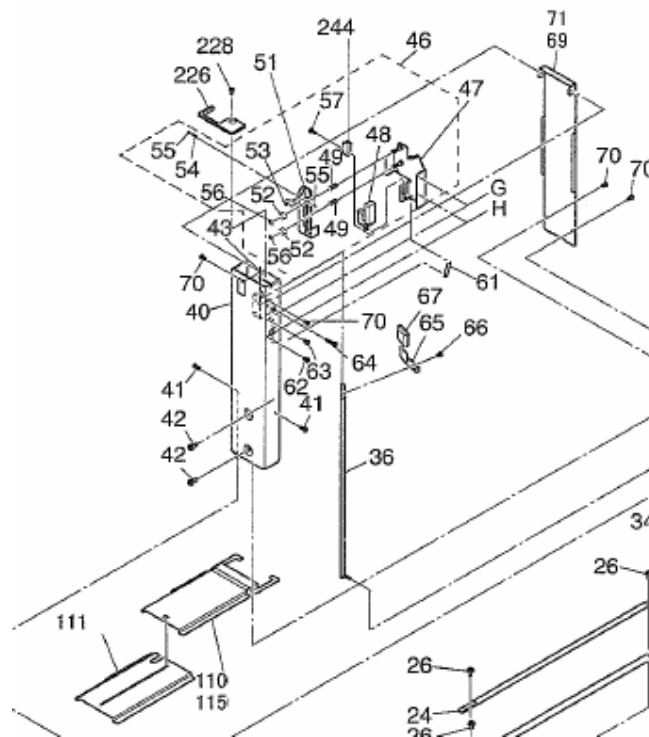
**Reason:**

- To make sure that the screws do not touch the hopper table.
- Sometimes the shutter plate (2) can be damaged during operation.

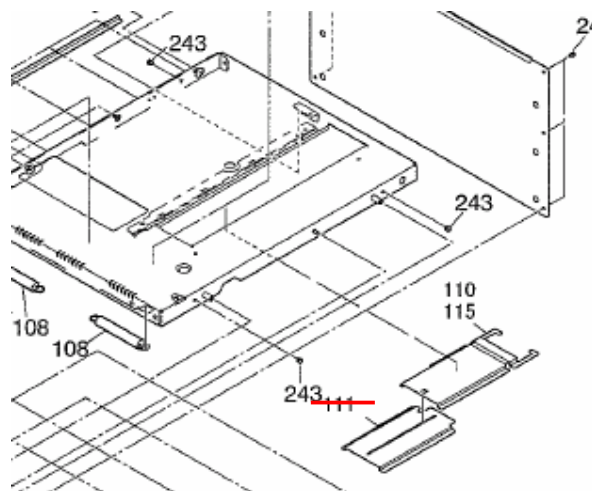
**Reissued:29-Mar-06**

Model: EMP156	Date: 14-Mar-06	No.: MG155013a
---------------	-----------------	----------------

**Pg 34, 116**



**Pg 32, 36, 114**



**Reissued:29-Mar-06**

Model: EMP156	Date: 14-Mar-06	No.: MG155013a
---------------	-----------------	----------------

**RCL (Japan) Production**

MODEL NAME	V/Hz	DESTINATION	CODE	APPLIED SERIAL NO.
EMP156	200,208,220,230,240 /60	USA	G155-17	First Production
EMP156	380,400,415/ 50	Europe	G155-27	First Production
High Capacity Feeder1	200,208,220,230,240 /50,60	USA/Europe	G867-00	First Production
High Capacity Feeder2	200,208,220,230,240 /50,60	USA/Europe	G866-00	First Production



**Reissued:29-Mar-06**

Model: EMP156	Date: 14-Mar-06	No.: MG155021a
---------------	-----------------	----------------

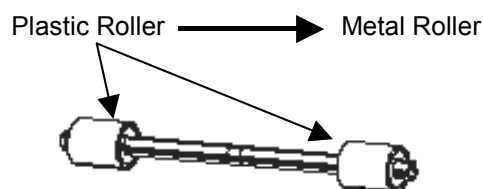
**MB Correction**

The items in bold italics have been corrected or added.

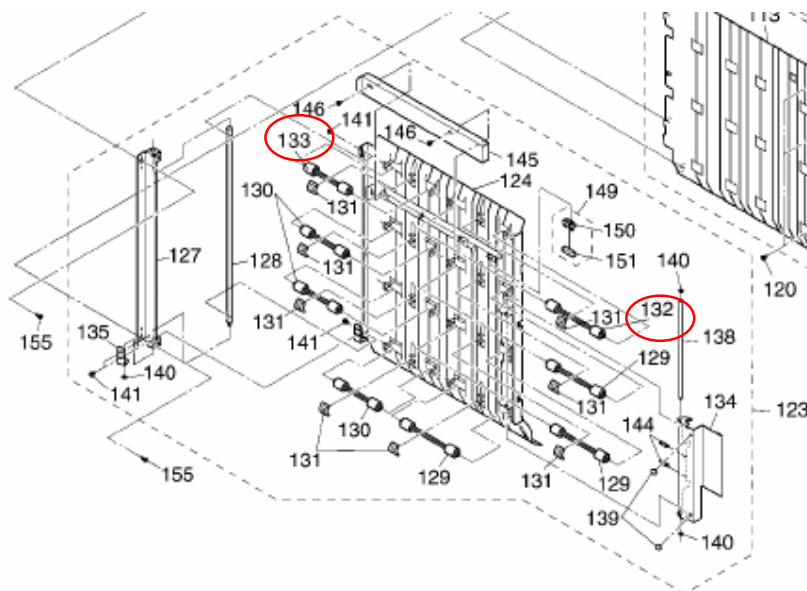
Modified Article: PF Pressure Roller		Prepared by: Y.Minakawa	
From: 2nd Tech. Support Sec. Service Support Dept.			
Reason for Modification:	<input type="checkbox"/> Parts catalog correction	<input type="checkbox"/> Vendor change	<input type="checkbox"/> Other
	<input type="checkbox"/> To facilitate assembly	<input checked="" type="checkbox"/> To improve reliability	<input type="checkbox"/> To meet standards ( )
	<input type="checkbox"/> Part standardization	<input type="checkbox"/> Product Safety	

Old part number	New part number	Description	Q'ty	Int	Page	Index	Note
G1551769	-	PF PRESSURE ROLLER ASS'Y	4-3	-	113	129	
G1551771	-	PF PRESSURE ROLLER ASS'Y	4-3	-	113	130	
-	<b>G1552001</b>	PF PRESSURE ROLLER 2 ASS'Y	1	-	113	132	
-	<b>G1552002</b>	PF PRESSURE ROLLER 2 ASS'Y	1	-	113	133	

**Change:** The material of the PF pressure roller was changed from plastic to metal.

**Reason:** To minimize static electricity buildup, which improves paper registration with long paper types.


Pg 112



**Reissued:29-Mar-06**

Model: EMP156	Date: 14-Mar-06	No.: MG155021a
---------------	-----------------	----------------

**RCL (Japan) Production**

MODEL NAME	V/Hz	DESTINATION	CODE	SERIAL NO.
High Capacity Feeder1	200,208,220,230,250 /60	USA	G867-00	Q6150970009
High Capacity Feeder1	200,208,220,230,250 /60	Europe	G867-00	First Production
High Capacity Feeder2	200,208,220,230,250 /60	USA	G866-00	Q6050980010
High Capacity Feeder2	200,208,220,230,250 /60	Europe	G866-00	First Production

**Reissued:19-Apr-06**

Model: EMP156	Date:17-Apr-06	No.: MG155028a
---------------	----------------	----------------

**MB Correction**

The items in bold italics have been corrected or added.

Modified Article: PAPER SUPPORTER		Prepared by: Y.Minakawa	
From: 2nd Tech. Support Sec. Service Support Dept.			
Reason for Modification:	<input type="checkbox"/> Parts catalog correction	<input type="checkbox"/> Vendor change	<input type="checkbox"/> Other
	<input type="checkbox"/> To facilitate assembly	<input checked="" type="checkbox"/> To improve reliability	<input type="checkbox"/> To meet standards
	<input type="checkbox"/> Part standardization	<input type="checkbox"/> Product Safety	( )

Old part number	New part number	Old Description	New Description	Q'ty	Int	Page	Index
G1552740	G1551874	Paper Suppoter(L) Ass'y	Paper Suppoter(L) W Ass'y	1-1	X/X	35	40
G1551875	-	PG Back Cover(L)		1-1	X/X	35	69
	G1552696		PG Back Cover(L2)				71
G1551303		Shutter Plate(1)		1-1	X/O	33	110
						35	
						115	
						117	
	G1552699		Shutter Plate(H)			33	115
						35	
						115	
						117	
G1551303	-	Shutter Plate(1)		1-1	X/O	37	115
	G1552698		Shutter Plate(H)				
G1552741	G1552493	Paper Supporter(L) Ass'y	Paper Supporter(L) W Ass'y	1-1	X/X	117	40
G1552494		PG Back Cover(L)		1-1	X/X	117	69
	G1552697		PG Back Cover(L2)				71

**Change:**

1. The shape of the PG Back Cover (L) was changed.
2. The thickness of the Shutter Plate (1) was increased from 0.5mm to 1mm.

**Reason:**

1. To make it easier to remove the PG Back Cover (L) during servicing in the field.
2. To make the Shuttle Plate (1) stronger.

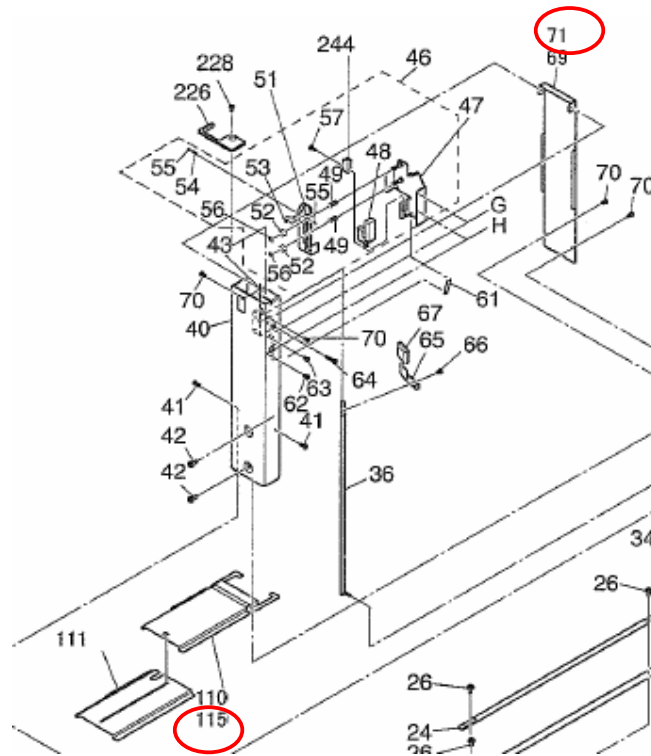
**RCL (Japan) Production**

MODEL NAME	V/Hz	DESTINATION	CODE	SERIAL NO.
EMP156	200,208,220,230,240 / 60	USA	G155-17	Q4950940007
High Capacity Feeder 1	200,208,220,230,240 /50,60	USA/Europe	G867-00	Q6150970009
High Capacity Feeder 2	200,208,220,230,240 /50,60	USA/Europe	G866-00	Q6050980010

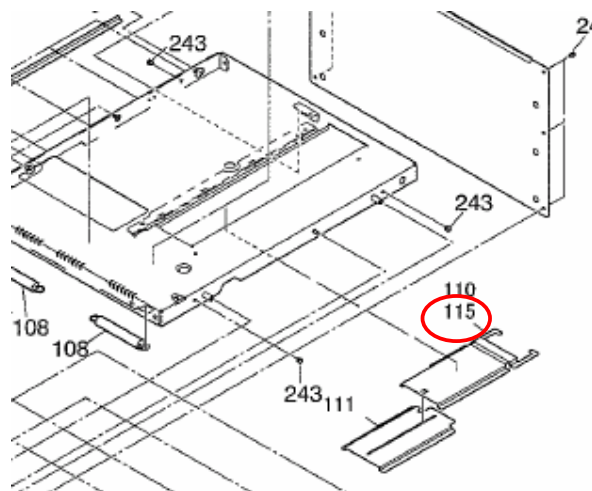
**Reissued:19-Apr-06**

Model: EMP156	Date:17-Apr-06	No.: MG155028a
---------------	----------------	----------------

Pg 34, 116



Pg 32, 36, 114



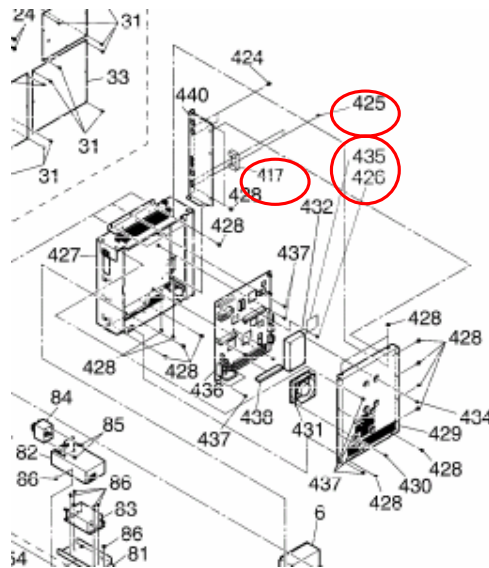
Model: EMP156		Date: 17-Apr-06	No.: MG155029
Modified Article: Serial Connector Cover		Prepared by: Y.Minakawa	
From: 2nd Tech. Support Sec. Service Support Dept.			
Reason for Modification:	<input type="checkbox"/> Parts catalog correction <input type="checkbox"/> Vendor change <input checked="" type="checkbox"/> Other <input type="checkbox"/> To facilitate assembly <input type="checkbox"/> To improve reliability <input type="checkbox"/> To meet standards <input type="checkbox"/> Part standardization <input type="checkbox"/> Product Safety    (      )		

Old part number	New part number	Description	Q'ty	Int	Page	Index	Note
-	<b>G1501893</b>	Serial Connector Cover	1		15	417	New Index
-	<b>G1501858</b>	Flat Screw	2		15	424	New Index
-	<b>G1501871</b>	M2.5x8 Screw	4		15	426	New Index
-	<b>G1501748</b>	Lan Adapter Ass'y	1		15	435	New Index

**Change:** The Serial Connect Cover was added to the external serial port.

**Reason:** To prevent easy access to the system via the external serial port.

Pg 12



### RCL (Japan) Production

MODEL NAME	V/Hz	DESTINATION	CODE	SERIAL NO.
EMP156	380,400,415/ 50	Europe	G155-27	Q4951240008

Model: EMP156		Date: 17-Apr-06	No.: MG155030
Modified Article: OPTICS BOARD/HR SENSOR ASS'Y		Prepared by: Y.Minakawa	
From: 2nd Tech. Support Sec. Service Support Dept.			
Reason for Modification:	<input type="checkbox"/> Parts catalog correction <input type="checkbox"/> Vendor change <input checked="" type="checkbox"/> Other <input type="checkbox"/> To facilitate assembly <input type="checkbox"/> To improve reliability <input type="checkbox"/> To meet standards <input type="checkbox"/> Part standardization <input type="checkbox"/> Product Safety    (       )		

Old part number	New part number	Description	Q'ty	Int	Page	Index	Note
G1551538	G1552693	OPTICS BOARD	1	X/X	14	33	
G1551674	G1552670	HR SENSOR ASS'Y	2	X/X	17	221	
G1551141	G1558141	THERMOPILE MODULE	2	X/X	17	222	
G1551974		HR SENSOR HOLDER REWORK	2	X/X	17	223	
	G1552668	THERMOPILE HOLDER					

**Change:** The thermopile on the optics board was changed.

**Reason:** To comply with the RoHS Directive.

## RCL (Japan) Production

MODEL NAME	V/Hz	DESTINATION	CODE	SERIAL NO.
EMP156	380,400,415v 50Hz	Europe	155-27	Q4950940002

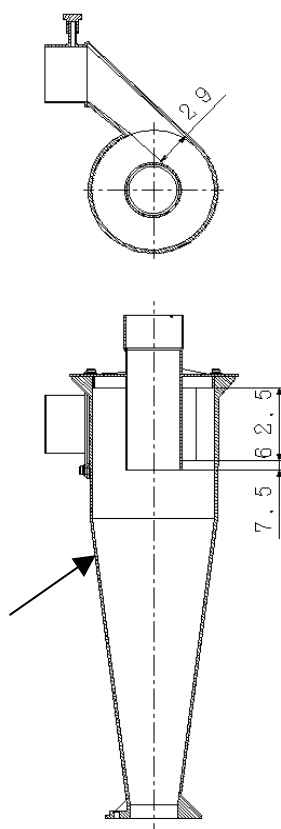
Model: EMP156		Date: 27-Apr-06	No.: MG155031
Modified Article: CYCLONE ASSY		Prepared by: Y.Minakawa	
From: 1st Tech. Support Sec. Service Support Dept.			
Reason for Modification:	<input type="checkbox"/> Parts catalog correction <input type="checkbox"/> Vendor change <input type="checkbox"/> Other <input type="checkbox"/> To facilitate assembly <input checked="" type="checkbox"/> To improve reliability <input type="checkbox"/> To meet standards <input type="checkbox"/> Part standardization <input type="checkbox"/> Product Safety    (     )		

Old part number	New part number	Description	Q'ty	Int	Pg	Index	Note
G1551657	G1552731	Cyclone Assy	1	X/O	17	278	

**Change:** The shape of the absorption opening of the cyclone assembly was changed.

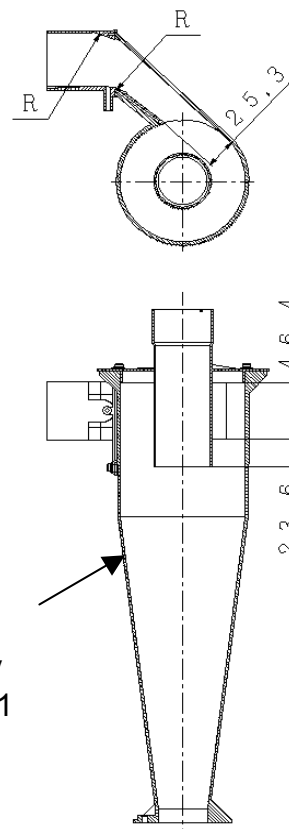
**Reason:** To improve the toner collection efficiency of the cyclone assembly.

Before Change



Cyclone Assembly  
G1551657

After Change



Cyclone Assembly  
G1552731

### RCL (Japan) Production

MODEL NAME	V/Hz	DESTINATION	CODE	SERIAL NO.
EMP156	380,400,415/50	Europe	G155-27	Q4960440020

Model: EMP156		Date: 7-Jun-06	No.: MG155032
Modified Article: RoHS Directive		Prepared by: Y.Minakawa	
From: 2nd Tech. Support Sec. Service Support Dept.			
Reason for Modification:	<input type="checkbox"/> Parts catalog correction <input type="checkbox"/> Vendor change <input checked="" type="checkbox"/> Other <input type="checkbox"/> To facilitate assembly <input type="checkbox"/> To improve reliability <input type="checkbox"/> To meet standards <input type="checkbox"/> Part standardization <input type="checkbox"/> Product Safety    (      )		

**Change:** The materials of the following parts were changed.

**Reason:** To comply with the RoHS Directive.

Old part number	New part number	Description	Q'ty	Int	Page	Index	Note
G1551241	G1558241	Top Cover(R)2 W Assy	1	X/X	79	104	
G1551273	G1558273	Rear Cover Assy (H)	1	X/X	85	162	
G1551514	G1558514	Panel Assy	1	X/X	17	13	
G1551969	G1558969	Ddrdimmm Assy	1	X/X	15	438	
G1551970	G1558970	Controller Board Assy(Ehp)	1	X/X	15	436	
G1552404	G1558404	Rear Cover (Lh) Assy	1	X/X	105	320	

### RCL (Japan) Production

MODEL NAME	V/Hz	DESTINATION	CODE	SERIAL NO.
EMP156	380,400,415 50Hz	Europe	G155-27	Q4960440020



Model: EMP156		Date: 26-Jun-06	No.: MG155033
Modified Article: Final Ass'y and Feeder Ass'y		Prepared by: Y.Minakawa	
From: 2nd Tech. Support Sec. Service Support Dept.			
Reason for Modification:	<input type="checkbox"/> Parts catalog correction <input type="checkbox"/> Vendor change <input type="checkbox"/> Other <input type="checkbox"/> To facilitate assembly <input checked="" type="checkbox"/> To improve reliability <input type="checkbox"/> To meet standards (      ) <input type="checkbox"/> Part standardization <input type="checkbox"/> Product Safety		

Old part number	New part number	Description	Q'ty	Int	Page	Index	Note
G1552375	G1552753	Hose(B) → <b>Hose(B) Tubing Ass'y</b>	1	X/O	17	43	
G1551570	G1552755	Hose(B) → <b>Hose(B) Tubing Ass'y</b>	1	X/O	17	44	
G1551010	-	Wire Band	2→4	-	17	46	
G1551568	G1552759	Hose(B) → <b>Hose(B) Tubing Ass'y</b>	2	X/O	103	184	
G1551566	G1552756	Hose(B) → <b>Hose(B) Tubing Ass'y</b>	1	X/O	103	188	
G1551565	G1552747	Hose(A) → <b>Hose(A) Tubing Ass'y</b>	1	X/O	103	192	
G1551569	G1552752	Hose(B) → <b>Hose(B) Tubing Ass'y</b>	2→1	X/O	103	237	
G1551571	G1552754	Hose(B) → <b>Hose(B) Tubing Ass'y</b>	1	X/O	103	238	
G1551564	G1552749	Hose(A) → <b>Hose(A) Tubing Ass'y</b>	1 1	X/O	37 115	176 176	
G1552469	G1552760	Hose(B) → <b>Hose(B) Tubing Ass'y</b>	1	X/O	103	185	
G1552468	G1552758	Hose(B) → <b>Hose(B) Tubing Ass'y</b>	1	X/O	103	186	
G1552467	G1552757	Hose(B) → <b>Hose(B) Tubing Ass'y</b>	1	X/O	103	187	
G1552466	G1552748	Hose(A) → <b>Hose(A) Tubing Ass'y</b>	1	X/O	103	191	
-	G1552760	Hose(B) Tubing Ass'y	1	-	103	242	



Model: EMP156	Date: 26-Jun-06	No.: MG155033
---------------	-----------------	---------------

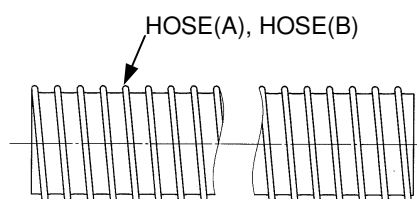
For RoHS compliant

Old part number	New part number	Description	Q'ty	Int	Page	Index	Note
G1552375	G1552753	Hose(B) → <b>Hose(B) Tubing Ass'y</b>	1	X/O	17	43	
G1551570	G1552755	Hose(B) → <b>Hose(B) Tubing Ass'y</b>	1	X/O	17	44	
G1551010	-	Wire Band	2→4	-	17	46	
G1551568	G1552759	Hose(B) → <b>Hose(B) Tubing Ass'y</b>	2	X/O	107	184	
G1551566	G1552756	Hose(B) → <b>Hose(B) Tubing Ass'y</b>	1	X/O	107	188	
G1551565	G1552747	Hose(A) → <b>Hose(A) Tubing Ass'y</b>	1	X/O	107	192	
G1551569	G1552752	Hose(B) → <b>Hose(B) Tubing Ass'y</b>	2→1	X/O	107	237	
G1551571	G1552754	Hose(B) → <b>Hose(B) Tubing Ass'y</b>	1	X/O	107	238	
G1551564	G1552749	Hose(A) → <b>Hose(A) Tubing Ass'y</b>	1 1	X/O	39 119	176 176	
G1552469	G1552760	Hose(B) → <b>Hose(B) Tubing Ass'y</b>	1	X/O	107	185	
G1552468	G1552758	Hose(B) → <b>Hose(B) Tubing Ass'y</b>	1	X/O	107	186	
G1552467	G1552757	Hose(B) → <b>Hose(B) Tubing Ass'y</b>	1	X/O	107	187	
G1552466	G1552748	Hose(A) → <b>Hose(A) Tubing Ass'y</b>	1	X/O	107	191	
-	G1552760	Hose(B) Tubing Ass'y	1	-	107	242	

**Change:** A protective tube was added to the hose.

**Reason:** To protect the hose from sharp edges.

BEFORE



AFTER

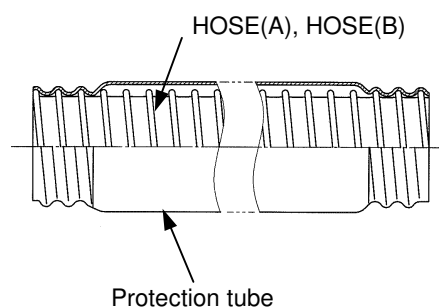
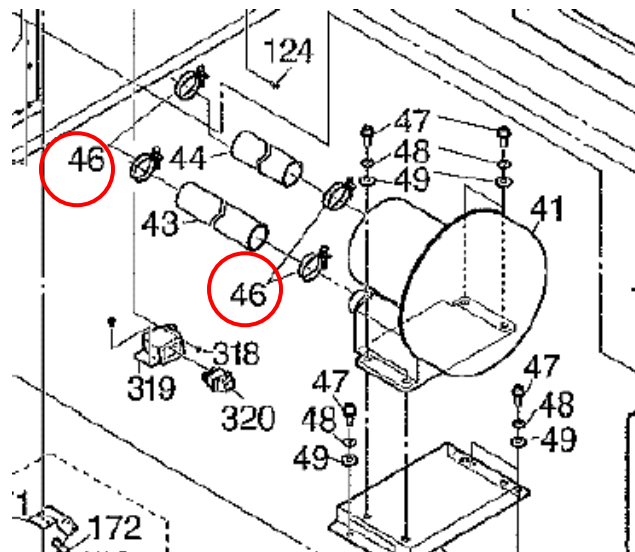
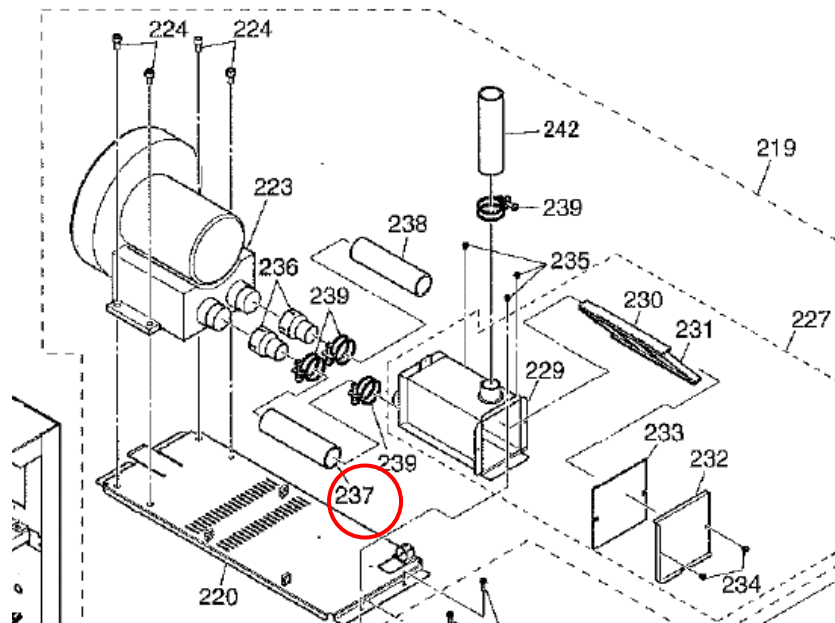


Illustration (pg. 16):



Pg 102(Pg 106)



Model: EMP156

Date: 26-Jun-06

No.: MG155033

**RCL (Japan) Production**

MODEL NAME	V/Hz	DESTINATION	CODE	SERIAL NO.
EMP156	380,400,415/50	Europe	G155-27	Q4960440020
High Capacity Feeder 1	200,208,220,230,240 /50,60	USA/ Europe	G867-00	Q6160570018
High Capacity Feeder 2	200,208,220,230,240 /50,60	USA/ Europe	G866-00	Q6060580013

Model: EMP156		Date: 26-Jun-06	No.: MG155034
Modified Article: Paper Supply Ass'y		Prepared by: Y.Minakawa	
From: 2nd Tech. Support Sec. Service Support Dept.			
Reason for Modification:	<input checked="" type="checkbox"/> Parts catalog correction <input type="checkbox"/> Vendor change <input type="checkbox"/> Other <input type="checkbox"/> To facilitate assembly <input type="checkbox"/> To improve reliability <input type="checkbox"/> To meet standards <input type="checkbox"/> Part standardization <input type="checkbox"/> Product Safety    (      )		

Old part number	New part number	Description	Q'ty	Int	Page	Index	Note
G1552271	G1552746	Pully Ass'y	1	X/O	21	61	
			1		21	75	
			1		101	75	
			1		101	87	
G1551050	G1551049	M3x6Hex Socket Set Screw → <b>M3x4Hex Socket Set Screw</b>	1→2	X/O	21	62	
			1→2		21	76	
			2	-	101	76	Parts catalog correction
			2		101	88	

FOR RoHS compliant

Old part number	New part number	Description	Q'ty	Int	Page	Index	Note
G1552271	G1552746	Pully Ass'y	1	X/O	23	61	
			1		23	75	
			1		105	75	
			1		105	87	
G1551050	G1551049	M3x6Hex Socket Set Screw → <b>M3x4Hex Socket Set Screw</b>	1→2	X/O	23	62	
			1→2		23	76	
			2	-	105	76	Parts catalog correction
			2		105	88	

## Change:

- 1) The length of the screw was decreased.
- 2) The quantity was increased from 1→2 pcs.

**Reason:** To secure the pulley and motor more firmly.

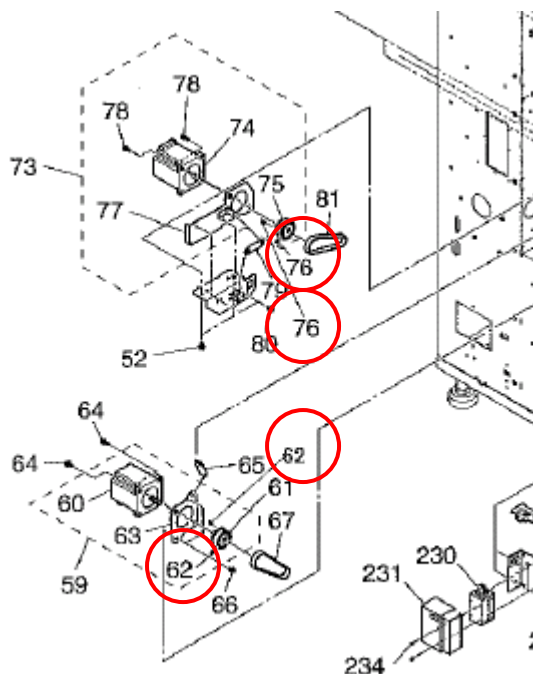
Model: EMP156

Date: 26-Jun-06

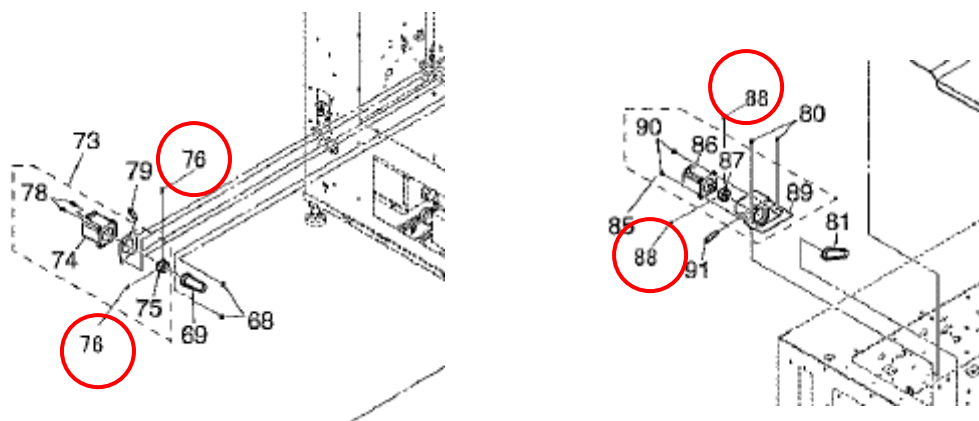
No.: MG155034

Illustration:

Pg 20



Pg 100



## RCL (Japan) Production

MODEL NAME	V/Hz	DESTINATION	CODE	SERIAL NO.
EMP156	380,400,415/50	Europe	G155-27	Q4960440020
High Capacity Feeder 1	200,208,220,230,240 /50,60	USA/ Europe	G867-00	Q6151270011
High Capacity Feeder 2	200,208,220,230,240 /50,60	USA/ Europe	G866-00	Q6050980010

Model: EMP156		Date:19-Jul-06	No.: MG155035
Modified Article: Parts Catalog Correction		Prepared by: Y.Minakawa	
From: 2nd Tech. Support Sec. Service Support Dept.			
Reason for Modification:	<input checked="" type="checkbox"/> Parts catalog correction <input type="checkbox"/> Vendor change <input type="checkbox"/> Other <input type="checkbox"/> To facilitate assembly <input type="checkbox"/> To improve reliability <input type="checkbox"/> To meet standards <input type="checkbox"/> Part standardization <input type="checkbox"/> Product Safety    (      )		

Part number	Old Description	New Description	Q'ty	Int	Page	Index	Note
G1551439	Inverter Valve Piece(2)	Inverter Valve Piece	6	-	57	152	

**RoHS Parts Catalog:**

Part number	Old Description	New Description	Q'ty	Int	Page	Index	Note
G1551439	Inverter Valve Piece(2)	Inverter Valve Piece	6	-	60	152	

**Change/Reason:** The description for the part in the table was corrected.



Model: EMP156		Date: 25-Jul-06	No.: MG155036
Modified Article: Fuser Unit		Prepared by: Y.Minakawa	
From: 2nd Tech. Support Sec. Service Support Dept.			
Reason for Modification:	<input type="checkbox"/> Parts catalog correction <input type="checkbox"/> Vendor change <input type="checkbox"/> Other		
	<input type="checkbox"/> To facilitate assembly <input checked="" type="checkbox"/> To improve reliability <input type="checkbox"/> To meet standards (      )		
	<input type="checkbox"/> Part standardization <input type="checkbox"/> Product Safety		

Old part number	New part number	Description	Q'ty	Int	Page	Index	Note
G1556694	G1552808	Back Up Roll	1	O/O	53	117	

**RoHS Parts Catalog:**

Old part number	New part number	Description	Q'ty	Int	Page	Index	Note
G1556694	G1552808	Back Up Roll	1	O/O	55	117	

**Change:**

1. The PFA tube was changed to a no-crease type.
2. The material of the PFA tube for the Back Up Roll was changed from carbon-containing PFA to pure PFA.
3. The thickness of the PFA tube was increased from 70μm to 200μm.
4. The color of the PFU tube was changed from black to red.

**Reason:** To prevent creases and tears in the PFA tube.

Crease in the PFA tube



Old Back Up Roll



New Back Up Roll

**RCL (Japan) Production**

MODEL NAME	V/Hz	DESTINATION	CODE	SERIAL NO.
EMP156	-	-	-	Q496104XXXX





Model: EMP156		Date: 22-Sep-06	No.: MG155037
Modified Article: Fuser Drive Gear Ass'y		Prepared by: Y.Minakawa	
From: 2nd Tech. Support Sec. Service Support Dept.			
Reason for Modification:	<input type="checkbox"/> Parts catalog correction <input type="checkbox"/> Vendor change <input type="checkbox"/> Other <input type="checkbox"/> To facilitate assembly <input checked="" type="checkbox"/> To improve reliability <input type="checkbox"/> To meet standards (      ) <input type="checkbox"/> Part standardization <input type="checkbox"/> Product Safety		

**Change:** The one-way clutch is now built into the support part of the HR Drive Gear Shaft.

**Reason:** To ensure that the fusing cleaning web does not wind around the back-up roller.

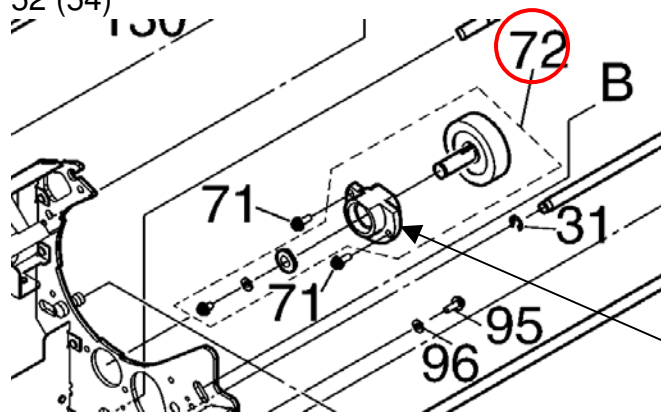
**Note:** This can happen when jammed paper is removed from the fusing unit and the back-up roller turns in reverse.

Old part number	New part number	Description	Q'ty	Int	Page	Index	Note
-	G1552809	HRD Gear Ass'y	1	-	53	72	New Index
G1552337	-	HR Drive Gear Holder	1	-		70	Delete
G1552336	-	HR Drive Gear Shaft Ass'y	1	-		74	Delete
G1551705	-	HR Drive Gear	1	-		75	Delete
G1551200	-	3X3X10 Key	1	-		76	Delete
G1501088	-	Retaining Ring-E	1	-		77	Delete

For **RoHS** parts catalog

Old part number	New part number	Description	Q'ty	Int	Page	Index	Note
-	G1552809	HRD GEAR ASS'Y	1	-	55	72	New Index
G1552337	-	HR Drive Gear Holder	1	-		70	
G1552336	-	HR Drive Gear Shaft Ass'y	1	-		74	
G1551705	-	HR Drive Gear	1	-		75	
G1551200	-	3X3X10 Key	1	-		76	
G1501088	-	Retaining Ring-E	1	-		77	

Pg. 52 (54)



Gear Holder with built-in one-way clutch

**RCL (Japan) Production**

MODEL NAME	V/Hz	DESTINATION	CODE	SERIAL NO.
EMP156	-	-	-	Q49XXXXXX45

Model: EMP156		Date: 3-Oct-06	No.: MG155038
Modified Article: Cord Lock for AC Cable		Prepared by: Y.Minakawa	
From: 2nd Tech. Support Sec. Service Support Dept.			
Reason for Modification:	<input type="checkbox"/> Parts catalog correction <input type="checkbox"/> Vendor change <input type="checkbox"/> Other <input type="checkbox"/> To facilitate assembly <input checked="" type="checkbox"/> To improve reliability <input type="checkbox"/> To meet standards <input type="checkbox"/> Part standardization <input type="checkbox"/> Product Safety    (      )		

**Change:** The sizes of these parts were changed.

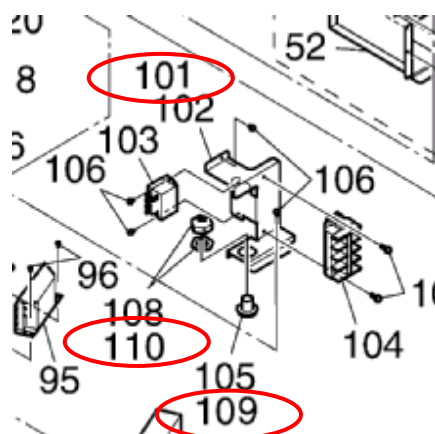
**Reason:** To make the cord lock parts compatible with the AC cable used for the North America model.

**Important:** When you install these parts for the first time, install them **together as a set**.

Old part number	New part number	Description	Q'ty	Int	Page	Index	Note
G1551468	G1552819	AC Parts Holder	1	X/X	13	102→ <b>101</b>	New Index for USA
G1551168	G1552818	Cord Lock	1	X/X	13	105→ <b>109</b>	New Index for USA
G1551169	G1552817	Cord Lock(Nut)	1	X/X	13	108→ <b>110</b>	New Index for USA

For RoHS parts catalog

Old part number	New part number	Description	Q'ty	Int	Page	Index	Note
G1551468	G1552819	AC Parts Holder(US)	1	X/X	14	102→ <b>101</b>	New Index for USA
G1551168	G1552818	Cord Lock	1	X/X	14	105→ <b>109</b>	New Index for USA
G1551169	G1552817	Cord Lock(Nut)	1	X/X	14	108→ <b>110</b>	New Index for USA



**RCL (Japan) Production**

MODEL NAME	V/Hz	DESTINATION	CODE	SERIAL NO.
EMP156	200,208,220,230,240 /60	USA	G155-17	Q4960740039

Model: EMP156		Date: 6-Oct-06	No.: MG155039
Modified Article: Fuser Drive Ass'y		Prepared by: Y.Minakawa	
From: 2nd Tech. Support Sec. Service Support Dept.			
Reason for Modification:	<input type="checkbox"/> Parts catalog correction <input type="checkbox"/> Vendor change <input type="checkbox"/> Other <input type="checkbox"/> To facilitate assembly <input checked="" type="checkbox"/> To improve reliability <input type="checkbox"/> To meet standards <input type="checkbox"/> Part standardization <input type="checkbox"/> Product Safety    (      )		

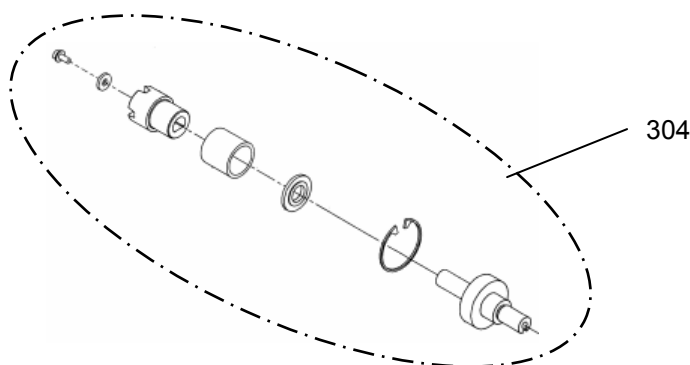
**Change:** Small component parts previously separately supplied, now supplied as a set.

**Reason:** To improve serviceability and reliability when replacing parts.

Old part number	New part number	Description	Q'ty	Int	Page	Index	Note
-	G1552821	Fuser Drive Ass'y	1	-	67	304	New Index
G1551729	-	Fuser Drive Coupling	1	-		292	Delete
G1551083	-	Compression Spring	1	-		293	Delete
G1551000	-	FP Washer	1	-		294	Delete
G1552148	-	Fuser Drive Shaft Ass'y 2	1	-		295	Delete
G1551106	-	Retaining Ring(Hole)	1	-		296	Delete
G1551198	-	Bolt Washer D10	1	-		297	Delete
G1501154	-	Screw,M3X8 Pan Hd.Phillips	1	-		303	Delete

For RoHS parts catalog

Old part number	New part number	Description	Q'ty	Int	Page	Index	Note
-	G1552821	Fuser Drive Ass'y	1	-	71	304	New Index
G1551729	-	Fuser Drive Coupling	1	-		292	Delete
G1551083	-	Compression Spring	1	-		293	Delete
G1551000	-	FP Washer	1	-		294	Delete
G1552148	-	Fuser Drive Shaft Ass'y 2	1	-		295	Delete
G1551106	-	Retaining Ring(Hole)	1	-		296	Delete
G1551198	-	Bolt Washer D10	1	-		297	Delete
G1501154	-	Screw,M3X8 Pan Hd.Phillips	1	-		303	Delete



## RCL (Japan) Production

MODEL NAME	V/Hz	DESTINATION	CODE	SERIAL NO.
EMP156	-	-	-	Q49611400XX

**Reissued: 15-Nov-06**

Model: EMP156	Date: 25-Jul-06	No.: MG155036a
---------------	-----------------	----------------

**MB Reissue**

The Serial Number information has been updated.

Modified Article: Fuser Unit		Prepared by: Y.Minakawa	
From: 2nd Tech. Support Sec. Service Support Dept.			
Reason for Modification:	<input type="checkbox"/> Parts catalog correction	<input type="checkbox"/> Vendor change	<input type="checkbox"/> Other
	<input type="checkbox"/> To facilitate assembly	<input checked="" type="checkbox"/> To improve reliability	<input type="checkbox"/> To meet standards ( )
	<input type="checkbox"/> Part standardization	<input type="checkbox"/> Product Safety	

Old part number	New part number	Description	Q'ty	Int	Page	Index	Note
G1556694	G1552808	Back Up Roll	1	O/O	53	117	

**RoHS Parts Catalog:**

Old part number	New part number	Description	Q'ty	Int	Page	Index	Note
G1556694	G1552808	Back Up Roll	1	O/O	55	117	

**Change:**

1. The PFA tube was changed to a no-crease type.
2. The material of the PFA tube for the Back Up Roll was changed from carbon-containing PFA to pure PFA.
3. The thickness of the PFA tube was increased from 70μm to 200μm.
4. The color of the PFU tube was changed from black to red.

**Reason:** To prevent creases and tears in the PFA tube.

Crease in the PFA tube



Old Back Up Roll



New Back Up Roll

**Reissued: 15-Nov-06**

Model: EMP156	Date: 25-Jul-06	No.: MG155036a
---------------	-----------------	----------------

**RCL (Japan) Production**

MODEL NAME	V/Hz	DESTINATION	CODE	SERIAL NO.
EMP156	200,208,220,230,250 / 60	USA	G155-17	Q4961040047

Reissued: 15-Nov-06

Model: EMP156	Date: 22-Sep-06	No.: MG155037a
---------------	-----------------	----------------

## MB Reissue

The Serial Number information has been updated.

Modified Article: Fuser Drive Gear Ass'y		Prepared by: Y.Minakawa	
From: 2nd Tech. Support Sec. Service Support Dept.			
Reason for Modification:	<input type="checkbox"/> Parts catalog correction <input type="checkbox"/> To facilitate assembly <input type="checkbox"/> Part standardization	<input type="checkbox"/> Vendor change <input checked="" type="checkbox"/> To improve reliability <input type="checkbox"/> Product Safety	<input type="checkbox"/> Other <input type="checkbox"/> To meet standards (      )

**Change:** The one-way clutch is now built into the support part of the HR Drive Gear Shaft.

**Reason:** To ensure that the fusing cleaning web does not wind around the back-up roller.

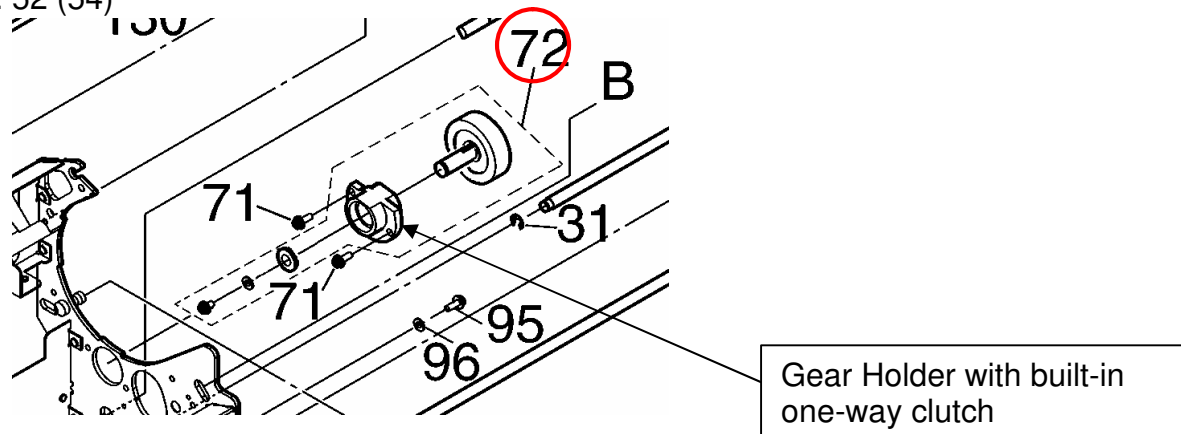
**Note:** This can happen when jammed paper is removed from the fusing unit and the back-up roller turns in reverse.

Old part number	New part number	Description	Q'ty	Int	Page	Index	Note
-	G1552809	HRD Gear Ass'y	1	-	53	72	New Index
G1552337	-	HR Drive Gear Holder	1	-		70	Delete
G1552336	-	HR Drive Gear Shaft Ass'y	1	-		74	Delete
G1551705	-	HR Drive Gear	1	-		75	Delete
G1551200	-	3X3X10 Key	1	-		76	Delete
G1501088	-	Retaining Ring-E	1	-		77	Delete

For RoHS parts catalog

Old part number	New part number	Description	Q'ty	Int	Page	Index	Note
-	G1552809	HRD GEAR ASS'Y	1	-	55	72	New Index
G1552337	-	HR Drive Gear Holder	1	-		70	
G1552336	-	HR Drive Gear Shaft Ass'y	1	-		74	
G1551705	-	HR Drive Gear	1	-		75	
G1551200	-	3X3X10 Key	1	-		76	
G1501088	-	Retaining Ring-E	1	-		77	

Pg. 52 (54)



**Reissued: 15-Nov-06**

Model: EMP156	Date: 22-Sep-06	No.: MG155037a
---------------	-----------------	----------------

**RCL (Japan) Production**

MODEL NAME	V/Hz	DESTINATION	CODE	SERIAL NO.
EMP156	200,208,220,230,250 / 60	USA	G155-17	Q4960840043

**Reissued: 22-Oct-08**

Model: EMP156	Date: 15-Nov-06	No.: MG155040a
---------------	-----------------	----------------

**MB Correction**

The items in ***bold italics*** have been corrected. (Page: 5/20)

Modified Article: Parts catalog correction		Prepared by: T.Tadokoro	
From: PPBG QA/Service Planning Dept.			
Reason for Modification:	<input checked="" type="checkbox"/> Parts catalog correction <input type="checkbox"/> Vendor change <input type="checkbox"/> Other <input type="checkbox"/> To facilitate assembly <input type="checkbox"/> To improve reliability <input type="checkbox"/> To meet standards <input type="checkbox"/> Part standardization <input type="checkbox"/> Product Safety    (    )		

1. **Change/ Reason:** These parts were deleted. They were listed in the Parts Catalog by mistake.

Part number	Description	Q'ty	Page	Index	Substitute part
G1551235	Frame Assy	1	13	1	-
G1552731	Cyclone Assy	1	17	278	G1551813
G1501162	Screw,M4X8 Pan Hd.Phillips With SW & W	3	17	286	G1551813
G1551179	Joint	2	17	372	G1551346
G1551433	Frame Assy(S)	1	19	1	-
G1551618	Solenoid Valve	1	19	36	G1555656
G1551175	Joint	1	19	37	G1555656
G1551348	Air Filter	1	19	51	G1555643
G1551179	Joint	1	19	52	G1555643
G1551181	Joint	1	19	53	G1555643
G1551177	Joint	1	19	54	G1555643
G1551357	Compressor	1	19	60	G1555662
G1551178	Joint	1	19	63	G1555662
G1551180	Joint	1	19	65	G1555662
G1551347	Relief Valve	1	19	75	G1555349
G1551179	Joint	1	19	77	G1555349
G1551302	Side Cover(L)	1	33	212	G1551236
G1551304	Side Cover(S)	1	37	212	G1551240
G1551709	Br Nip Adjuster	1	53	7	G1556678
G1552219	Br Nip Adjuster	1	53	8	G1556678
G1552071	Eccentric Plate	1	53	9	G1556678
G1552188	Br Arm Nut Plate	1	53	10	G1556678
G1552183	Br Arm Bushing	1	53	11	G1556678
G1551028	Hex Socket Bolt	3	53	12	G1556678
G1501087	Retaining Ring-E	2	53	13	G1556678
G1551708	Br Arm Rear	1	53	17	G1556678
G1501087	Retaining Ring-E	2	53	18	G1556678
G1552064	Br Spring (130)	2	53	19	G1556678
G1552221	Web Cassette Shaft	2	53	30	G1556678
G1501086	Retaining Ring-E	2	53	31	G1556678
G1551545	Paper Guide In Hinge Plate	1	53	125	G1551399
G1552218	Br Separator Holder Ass'y	3	54	235	G1556678
G1501160	Screw,M4X8 Pan Hd.Phillips With SW & W	6	54	238	G1556678
G1551274	Phs Frame (2) Rivet Ass'y	1	57	3	G1551310
G1551414	Led Guide Rail	2	59	41	-
G1501162	Screw,M4X12 Pan Hd.Phillips With SW&W	8	59	101	-
G1551735	Charger Shield Ass'y	1	59	151	G1555307
G1551530	B Unit Stopper Shaft	1	61	47	-
G1552063	B Unit Stopper (2)	2	61	48	-



**Reissued: 22-Oct-08**

Model: EMP156		Date: 15-Nov-06		No.: MG155040a	
G1551308	Motor Base Sub Ass'y	1	65	210	-
G1551753	Bb Holder Mgr(L)	1	65	234	-
G1551752	Bb Holder Mgr(U)	1	65	235	-
G1501163	Screw,M4X16 Pan Hd.Phillips With SW&W	4	65	236	-
G1551311	Fuser Drive Base Sub Ass'y	1	65	280	-
G1551175	Joint	1	67	287	-
G1551031	M5X20 Hex Socket Bolt With SW & W	6	67	345	-
G1551777	Drum Blank Details	1	69	3	G1555276
G1552127	Drum Cap Terminal (2)	1	69	6	G1555276
G1551438	Drum Cap Assy	1	69	13	G1555276
G1552050	Drum Cap Front Holder	1	69	59	G1555276
G1501160	Screw,M4X8 Pan Hd.Phillips With SW & W	2	69	60	G1555276
G1551218	Drum Hold Plate (Eh)	1	69	69	G1555276
G1552126	Mgr Holder (F)	1	69	70	G1555276
G1552125	Mg Inshuretor Rework	2	69	71	G1555276
G1552100	Mg Sensor Callar	1	69	72	G1555276
G1552075	D Cam	1	69	77	G1555276
G1501163	Screw,M4X16 Pan Hd.Phillips With SW&W	2	69	78	G1555276
G1551183	Spring Washer,D6	1	69	79	G1555276
G1501136	Nut,M6	1	69	80	G1555276
G1551621	Mgr Adjuster Cam	1	69	81	G1555276
G1552154	Bias Cap	1	69	82	G1555276
G1551313	Dev Frame Ass'y	1	71	3	G1555238
G1501841	Doctor Holder D	2	71	39	G1555238
G1552115	Doctor Fix Plate (E)	2	71	40	G1555238
G1551025	M3X10 Hex Socket Bolt	2	71	41	G1555238
G1551375	Magnet Roll (D30) L	1	71	43	G1555238
G1551376	Magnet Roll (D30) L	1	71	44	G1555238
G1501774	B.B Holder Mgr Assy	2	71	46	G1555238
G1552329	Mgr Seal Ass'Y	2	71	48	G1555238
G1551511	Mgr Flange(F2)	2	71	49	G1555238
G1501005	M3X14 Hex Socket Bolt	2	71	54	G1555238
G1552034	Doctor Blade(2)	1	71	62	G1555238
G1501004	M3X6 Hex Socket Bolt	2	71	63	G1555238
G1551278	Dev Bottom Cover	1	71	146	G1555238
G1552725	Toner Hopper Sub Assy	1	73	3	G1552724
G1552124	Feed Roll Cover	2	73	6	G1552724
G1551821	Lake Plate W Assy(2)	1	73	21	G1552724
G1552123	Sub Lake Plate	1	73	22	G1552724
G1551619	Fix Plate(2)	1	73	23	G1552724
G1501154	Screw,M3X8 pan hd.Phillips with SW & W	5	73	24	G1552724
G1552386	Hp Panel Cable Assy	1	79	34	G1552723
G1551234	Stacker Frame Assy(H)	1	81	3	-
G1552424	Feeder Frame Assy	1	103	4	-
G1551842	P Blower Joint	2	103	236	G1555933
G1552421	Side Cover(Lh)	1	115	212	G1552411
G1552414	Lt Frame Assy	1	119	1	-

**Reissued: 22-Oct-08**

Model: EMP156	Date: 15-Nov-06	No.: MG155040a
---------------	-----------------	----------------

For RoHS parts catalog

Part number	Description	Q'ty	Page	Index	Substitute part
G1551235	Frame Assy	1	13	1	-
G1552731	Cyclone Assy	1	18	278	G1551813
G1501162	Screw,M4X8 Pan Hd.Phillips With SW & W	3	18	286	G1551813
G1551179	Joint	2	18	372	G1551346
G1551433	Frame Assy(S)	1	21	1	-
G1551618	Solenoid Valve	1	21	36	G1555656
G1551175	Joint	1	21	37	G1555656
G1551348	Air Filter	1	21	51	G1555643
G1551179	Joint	1	21	52	G1555643
G1551181	Joint	1	21	53	G1555643
G1551177	Joint	1	21	54	G1555643
G1551357	Compressor	1	21	60	G1555662
G1551178	Joint	1	21	63	G1555662
G1551180	Joint	1	21	65	G1555662
G1551347	Relief Valve	1	21	75	G1555349
G1551179	Joint	1	21	77	G1555349
G1551302	Side Cover(L)	1	35	212	G1551236
G1551304	Side Cover(S)	1	39	212	G1551240
G1551709	Br Nip Adjuster	1	55	7	G1556678
G1552219	Br Nip Adjuster	1	55	8	G1556678
G1552071	Eccentric Plate	1	55	9	G1556678
G1552188	Br Arm Nut Plate	1	55	10	G1556678
G1552183	Br Arm Bushing	1	55	11	G1556678
G1551028	Hex Socket Bolt	3	55	12	G1556678
G1501087	Retaining Ring-E	2	55	13	G1556678
G1551708	Br Arm Rear	1	55	17	G1556678
G1501087	Retaining Ring-E	2	55	18	G1556678
G1552064	Br Spring (130)	2	55	19	G1556678
G1552221	Web Cassette Shaft	2	55	30	G1556678
G1501086	Retaining Ring-E	2	55	31	G1556678
G1551545	Paper Guide In Hinge Plate	1	56	125	G1551399
G1552218	Br Separator Holder Ass'y	3	57	235	G1556678
G1501160	Screw,M4X8 Pan Hd.Phillips With SW & W	6	57	238	G1556678
G1551274	Phs Frame (2) Rivet Ass'y	1	59	3	G1551310
G1551414	Led Guide Rail	2	63	41	-
G1501162	Screw,M4X12 Pan Hd.Phillips With SW&W	8	63	101	-
G1551735	Charger Shield Ass'y	1	63	151	G1555307
G1551530	B Unit Stopper Shaft	1	65	47	-
G1552063	B Unit Stopper (2)	2	65	48	-
G1551031	M5X20 Hex Socket Bolt With SW & W	6	67	345	
G1551308	Motor Base Sub Ass'y	1	69	210	-
G1551753	Bb Holder Mgr(L)	1	69	234	-
G1551752	Bb Holder Mgr(U)	1	69	235	-
G1501163	Screw,M4X16 Pan Hd.Phillips With SW&W	4	69	236	-
G1551311	Fuser Drive Base Sub Ass'y	1	69	280	-
G1551175	Joint	1	71	287	-
G1551777	Drum Blank Details	1	73	3	G1555276
G1552127	Drum Cap Terminal (2)	1	73	6	G1555276
G1551438	Drum Cap Assy	1	73	13	G1555276
G1552050	Drum Cap Front Holder	1	73	59	G1555276

**Reissued: 22-Oct-08**

Model: EMP156		Date: 15-Nov-06		No.: MG155040a	
G1501160	Screw,M4X8 Pan Hd.Phillips With SW & W	2	73	60	G1555276
G1551218	Drum Hold Plate (Eh)	1	73	69	G1555276
G1552126	Mgr Holder (F)	1	73	70	G1555276
G1552125	Mg Inshuretor Rework	2	73	71	G1555276
G1552100	Mg Sensor Callar	1	73	72	G1555276
G1552075	D Cam	1	73	77	G1555276
G1501163	Screw,M4X16 Pan Hd.Phillips With SW&W	2	73	78	G1555276
G1551183	Spring Washer,D6	1	73	79	G1555276
G1501136	Nut,M6	1	73	80	G1555276
G1551621	Mgr Adjuster Cam	1	73	81	G1555276
G1552154	Bias Cap	1	73	82	G1555276
G1551313	Dev Frame Ass'y	1	75	3	G1555238
G1501841	Doctor Holder D	2	75	39	G1555238
G1552115	Doctor Fix Plate (E)	2	75	40	G1555238
G1551025	M3X10 Hex Socket Bolt	2	75	41	G1555238
G1551375	Magnet Roll (D30) L	1	75	43	G1555238
G1551376	Magnet Roll (D30) L	1	75	44	G1555238
G1501774	B.B Holder Mgr Assy	2	75	46	G1555238
G1552329	Mgr Seal Ass'Y	2	75	48	G1555238
G1551511	Mgr Flange(F2)	2	75	49	G1555238
G1501005	M3X14 Hex Socket Bolt	2	75	54	G1555238
G1552034	Doctor Blade(2)	1	75	62	G1555238
G1501004	M3X6 Hex Socket Bolt	2	75	63	G1555238
G1551278	Dev Bottom Cover	1	75	146	G1555238
G1552725	Toner Hopper Sub Assy	1	77	3	G1552724
G1552124	Feed Roll Cover	2	77	6	G1552724
G1551821	Lake Plate W Assy(2)	1	77	21	G1552724
G1552123	Sub Lake Plate	1	77	22	G1552724
G1551619	Fix Plate(2)	1	77	23	G1552724
G1501154	Screw,M3X8 pan hd.Phillips with SW & W	5	77	24	G1552724
G1552386	Hp Panel Cable Assy	1	83	34	G1552723
G1551234	Stacker Frame Assy(H)	1	85	3	-
G1552424	Feeder Frame Assy	1	107	4	-
G1551842	P Blower Joint	2	107	236	G1555933
G1552421	Side Cover(Lh)	1	119	212	G1552411
G1552414	Lt Frame Assy	1	123	1	-

**Reissued: 22-Oct-08**

Model: EMP156	Date: 15-Nov-06	No.: MG155040a
---------------	-----------------	----------------

**2. Change/ Reason:** The P/N or Q'ty for these parts were corrected.

Part number	Description	Q'ty	Page	Index	Note
G1551013	Sleeve Cap	2→1	17	283	Q'ty was corrected.
G1501160	Screw,M4X8 Pan Hd.Phillips With SW & W	4→2	53	126	Q'ty was corrected.
G1501154	Screw,M3X8 Pan Hd.Phillips With SW & W	6→4	61	49	Q'ty was corrected.
G1551188	Screw,M4X10 Pan Hd.Phillips	5→3	69	10	Q'ty was corrected.
G1551196	Bolt Washer, D4,Brass	5→3	69	11	Q'ty was corrected.
G1551104	Retaining Ring-C	3→2	69	73	Q'ty was corrected.
G1551489 →G1552825	Tr Bottom Plate Sub Assy	1	75	1	P/N was corrected.

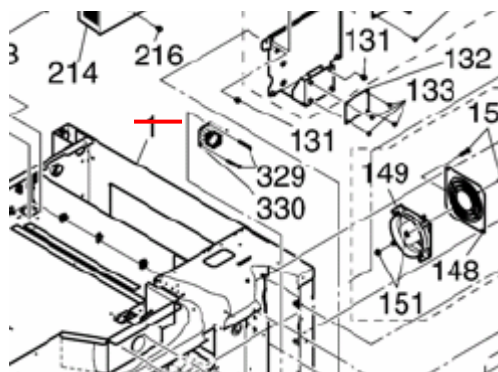
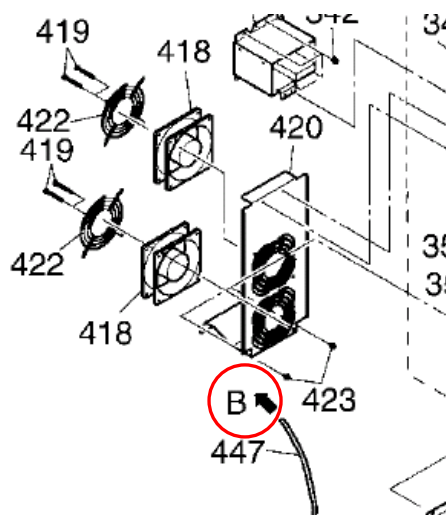
For RoHS parts catalog

Part number	Description	Q'ty	Page	Index	Note
G1551013	Sleeve Cap	2→1	18	283	Q'ty was corrected.
G1501160	Screw,M4X8 Pan Hd.Phillips With SW & W	4→2	56	126	Q'ty was corrected.
G1501154	Screw,M3X8 Pan Hd.Phillips With SW & W	6→4	65	49	Q'ty was corrected.
G1551188	Screw,M4X10 Pan Hd.Phillips	5→3	73	10	Q'ty was corrected.
G1551196	Bolt Washer, D4,Brass	5→3	73	11	Q'ty was corrected.
G1551104	Retaining Ring-C	3→2	73	73	Q'ty was corrected.
G1551489 →G1552825	Tr Bottom Plate Sub Assy	1	79	1	P/N was corrected.

**Reissued: 22-Oct-08**
**Model: EMP156**
**Date: 15-Nov-06**
**No.: MG155040a**

Illustration change

Pg. 12



Reissued: 22-Oct-08

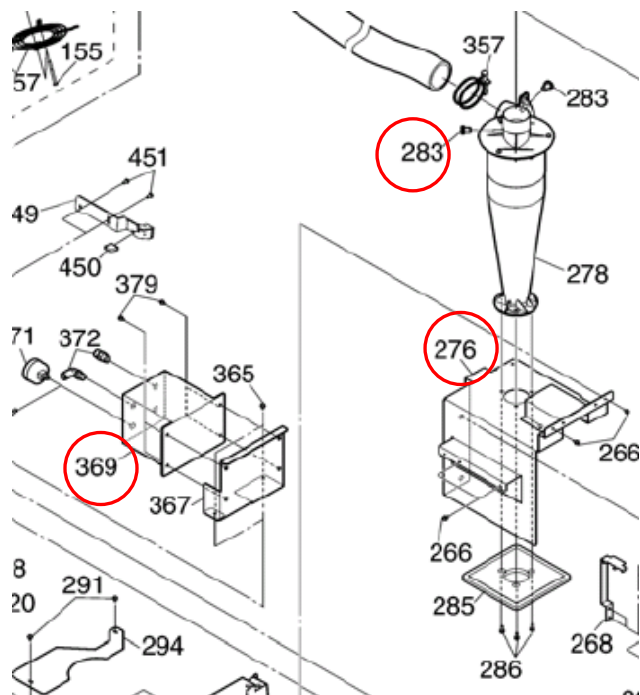
Model: EMP156

Date: 15-Nov-06

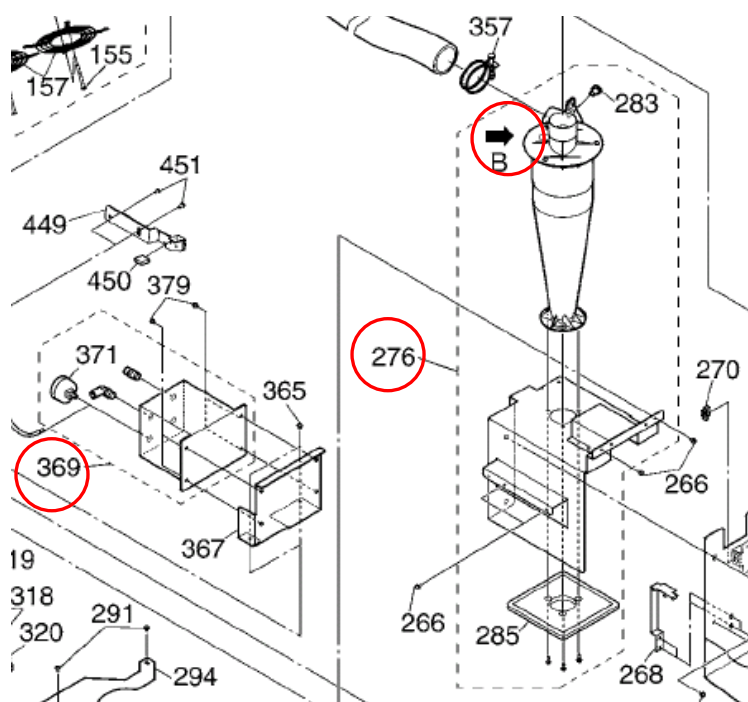
No.: MG155040a

Pg. 16

**Incorrect:**



**Correct :**

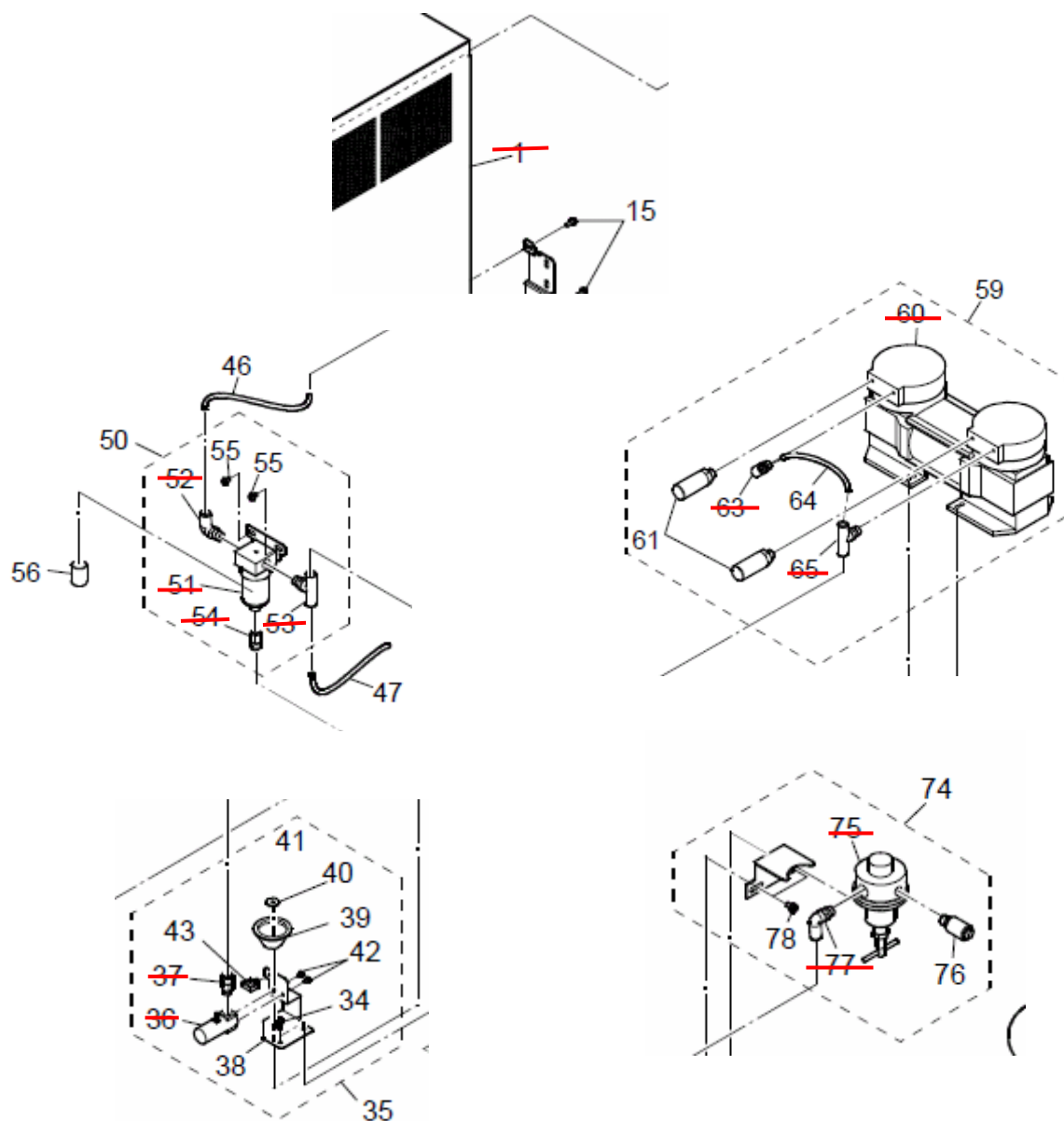


Reissued: 22-Oct-08

Model: EMP156	Date: 15-Nov-06	No.: MG155040a
---------------	-----------------	----------------

Pg. 18

Pg. 20(RoHS parts catalog)

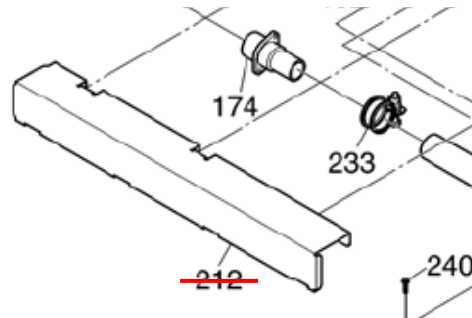


**Reissued: 22-Oct-08**

Model: EMP156	Date: 15-Nov-06	No.: MG155040a
---------------	-----------------	----------------

Pg. 36

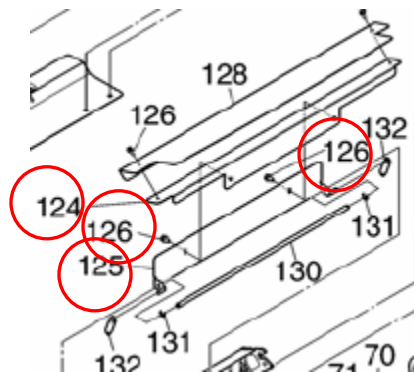
Pg. 38(for RoHS parts catalog)



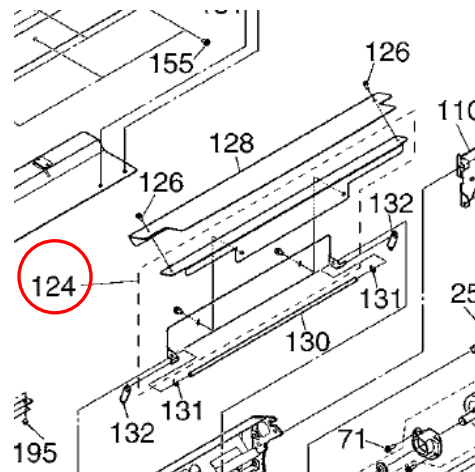
Pg. 52

Pg. 54(for RoHS parts Catalog)

**Incorrect:**



**Correct :**



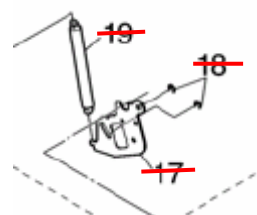
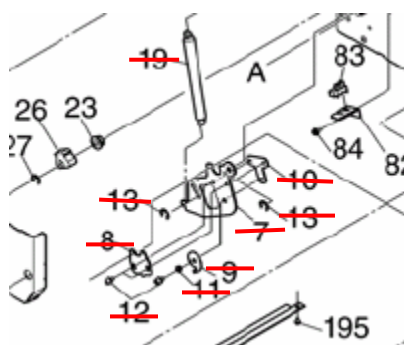
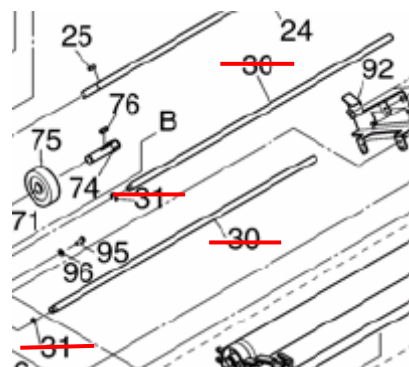
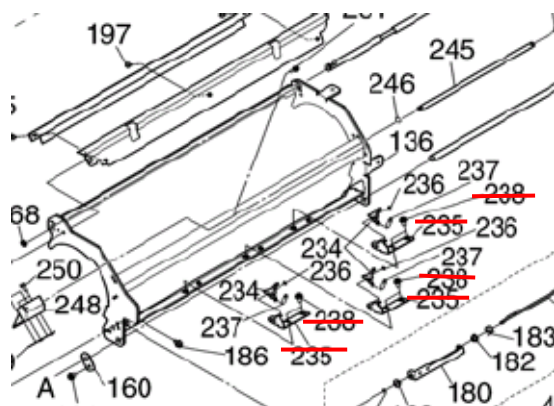


**Reissued: 22-Oct-08**

Model: EMP156	Date: 15-Nov-06	No.: MG155040a
---------------	-----------------	----------------

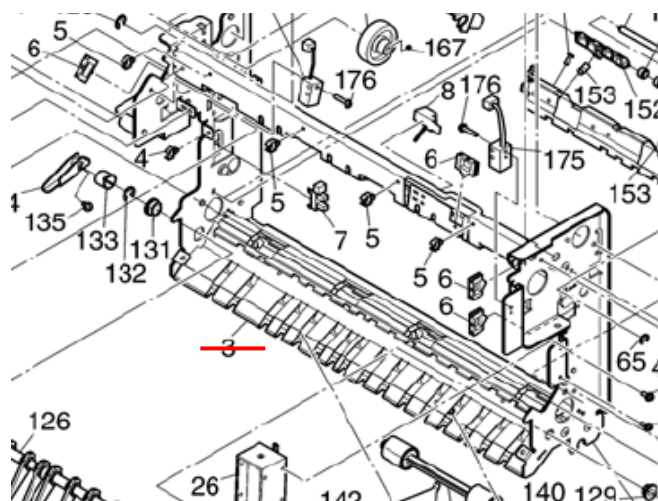
Pg. 52

Pg. 54(for RoHS parts Catalog)



Pg. 56

Pg. 58(for RoHS parts catalog)



Reissued: 22-Oct-08

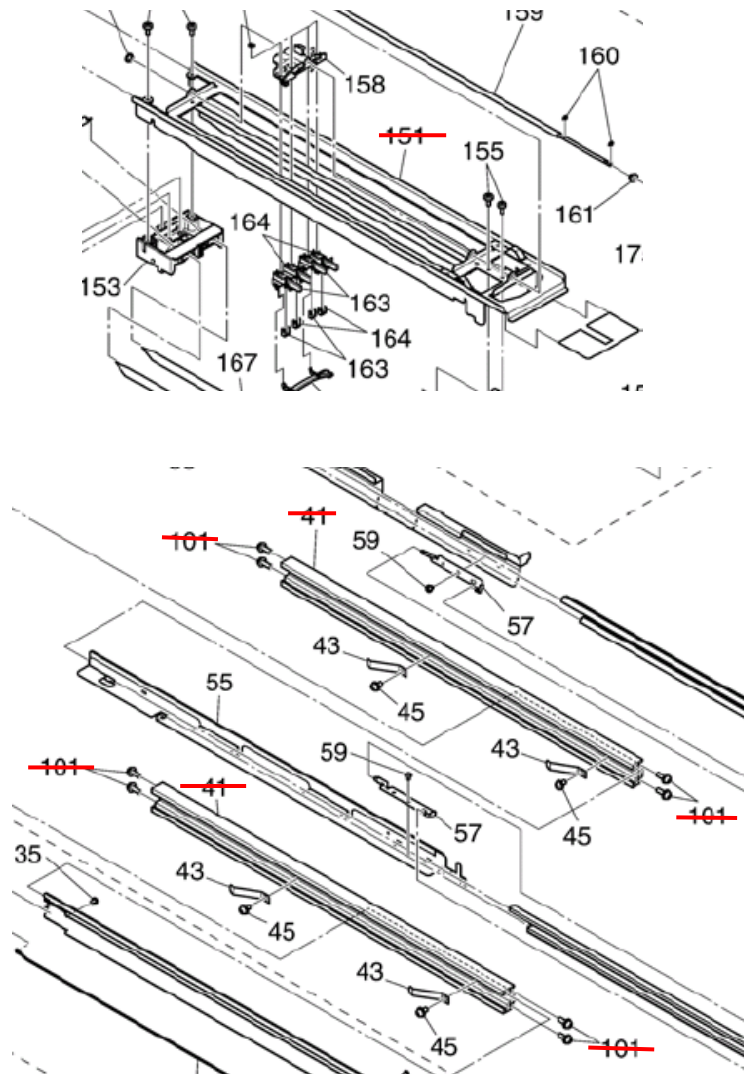
Model: EMP156

Date: 15-Nov-06

No.: MG155040a

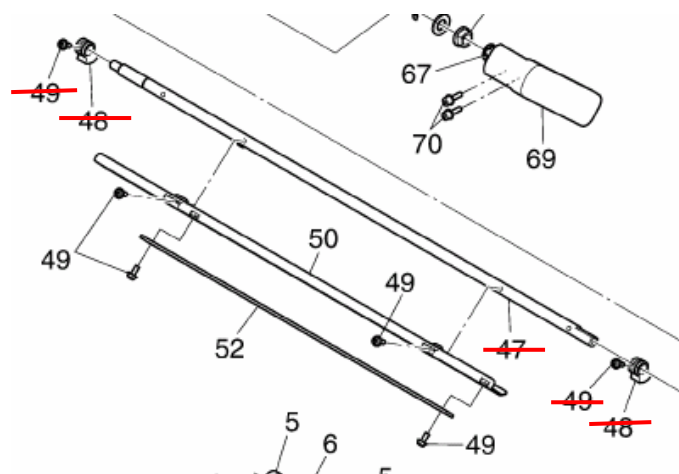
Pg. 58

Pg. 62(RoHS parts catalog)



Pg. 60

Pg. 64(RoHS parts catalog)



**Reissued: 22-Oct-08**

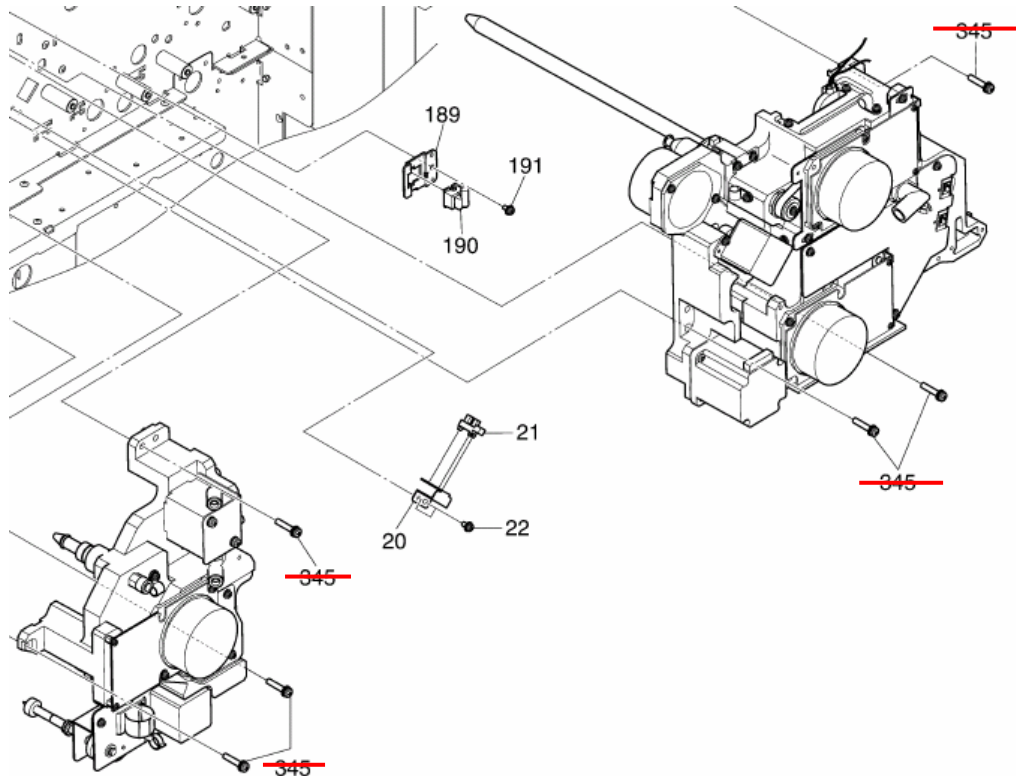
Model: EMP156

Date: 15-Nov-06

No.: MG155040a

Pg. 62

Pg. 66(for RoHS parts catalog)



**Reissued: 22-Oct-08**

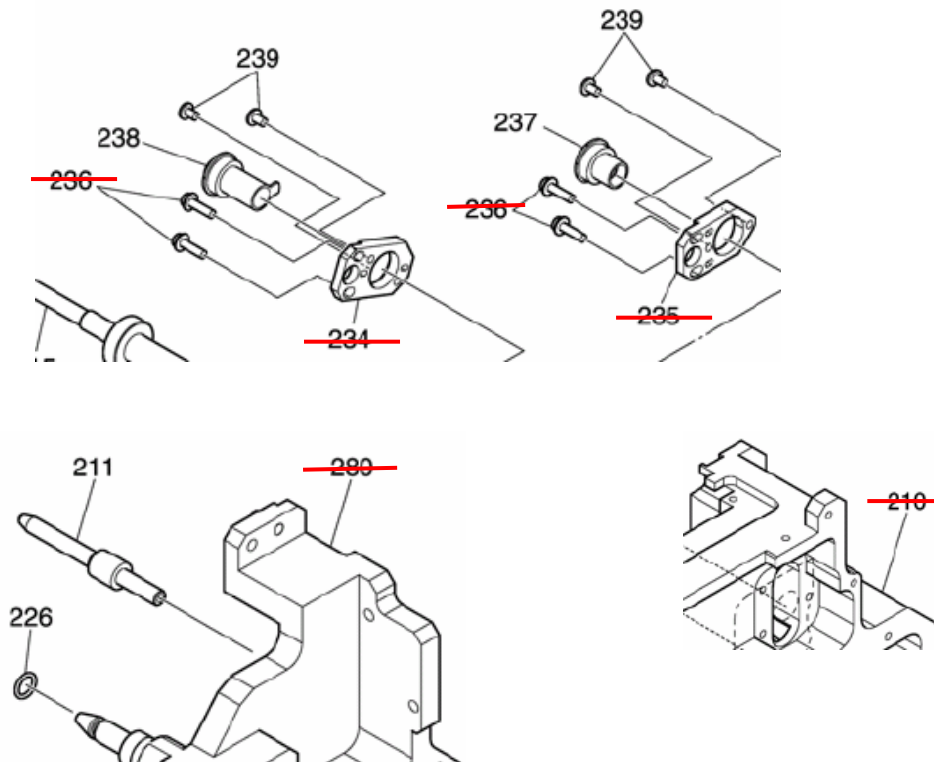
Model: EMP156

Date: 15-Nov-06

No.: MG155040a

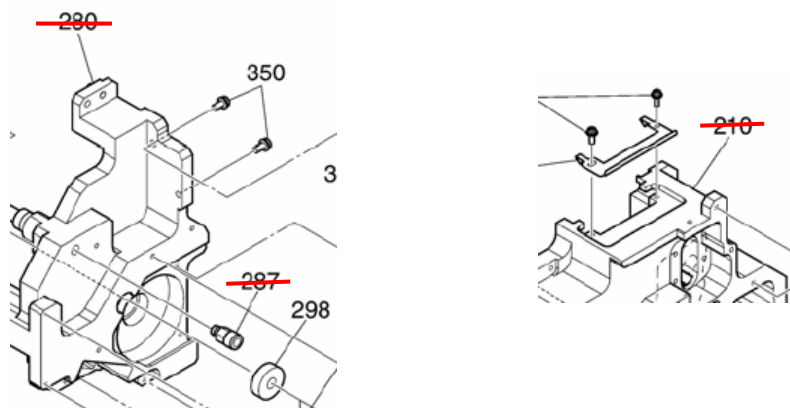
Pg. 64

Pg. 68(for RoHS parts catalog)



Pg. 66

Pg. 70(for RoHS parts catalog)

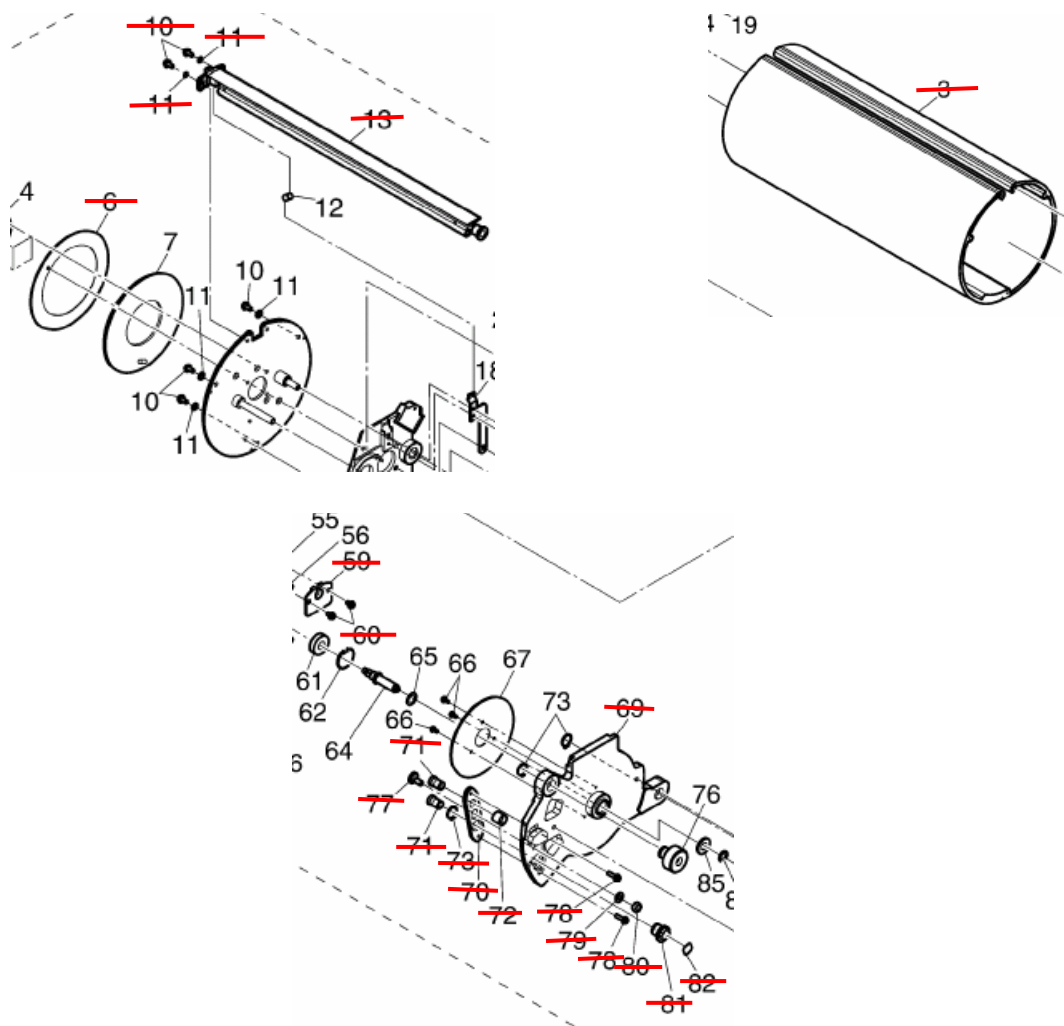


Reissued: 22-Oct-08

Model: EMP156	Date: 15-Nov-06	No.: MG155040a
---------------	-----------------	----------------

Pg. 68

Pg. 72(RoHS parts catalog)



Reissued: 22-Oct-08

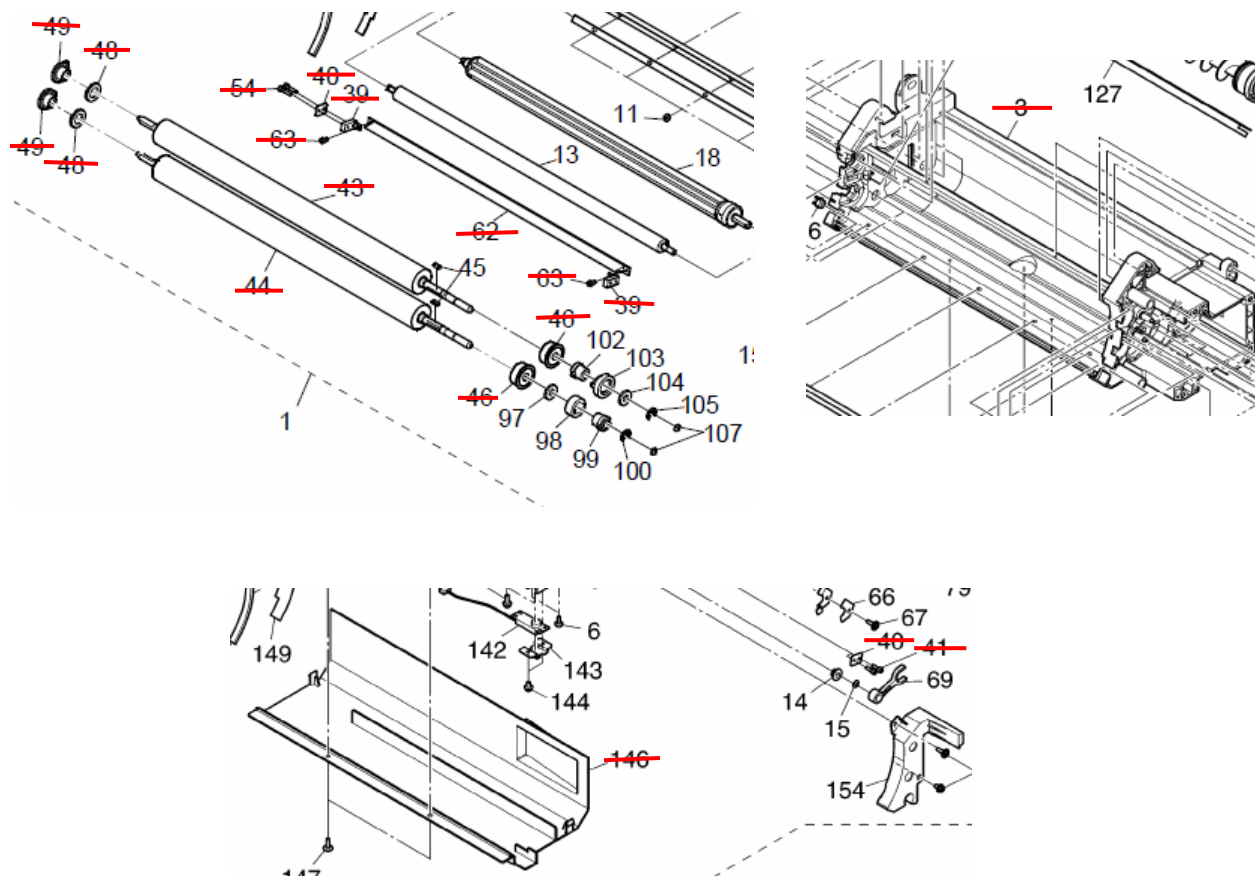
Model: EMP156

Date: 15-Nov-06

No.: MG155040a

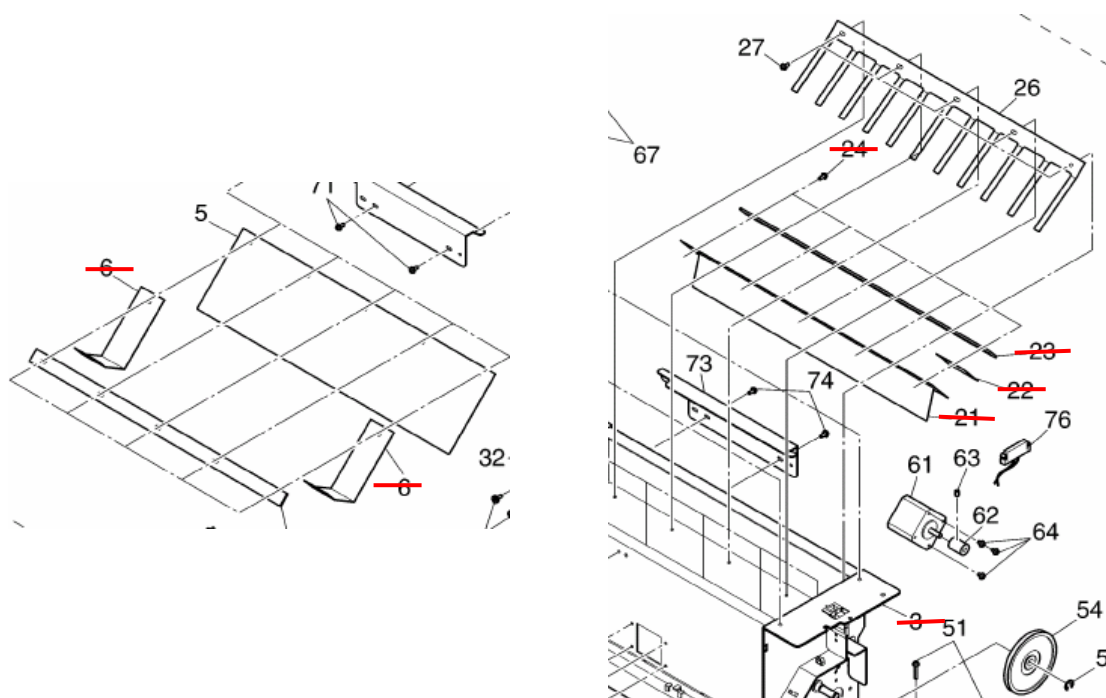
Pg. 70

Pg. 74(for RoHS parts catalog)



Pg. 72

Pg. 76(for RoHS parts catalog)





Reissued: 22-Oct-08

Model: EMP156

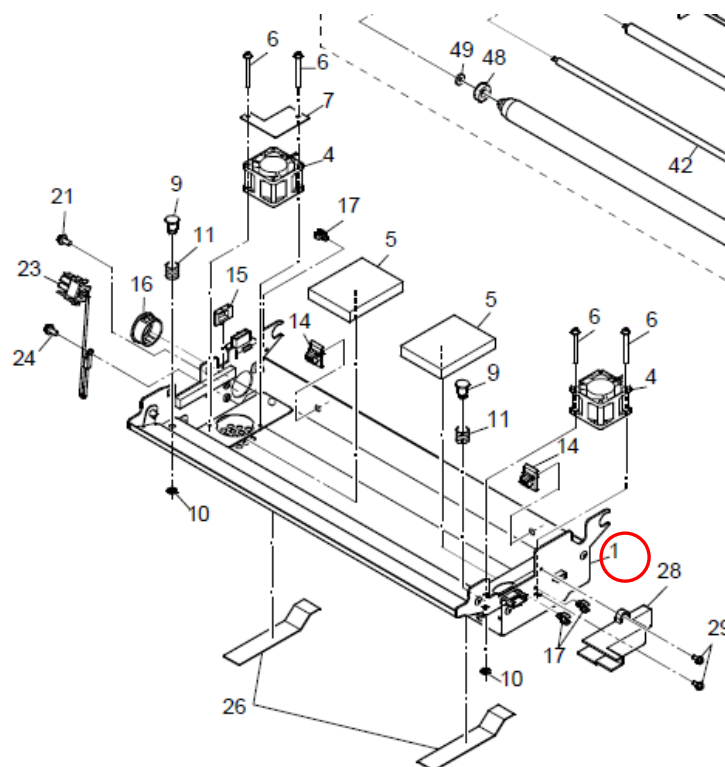
Date: 15-Nov-06

No.: MG155040a

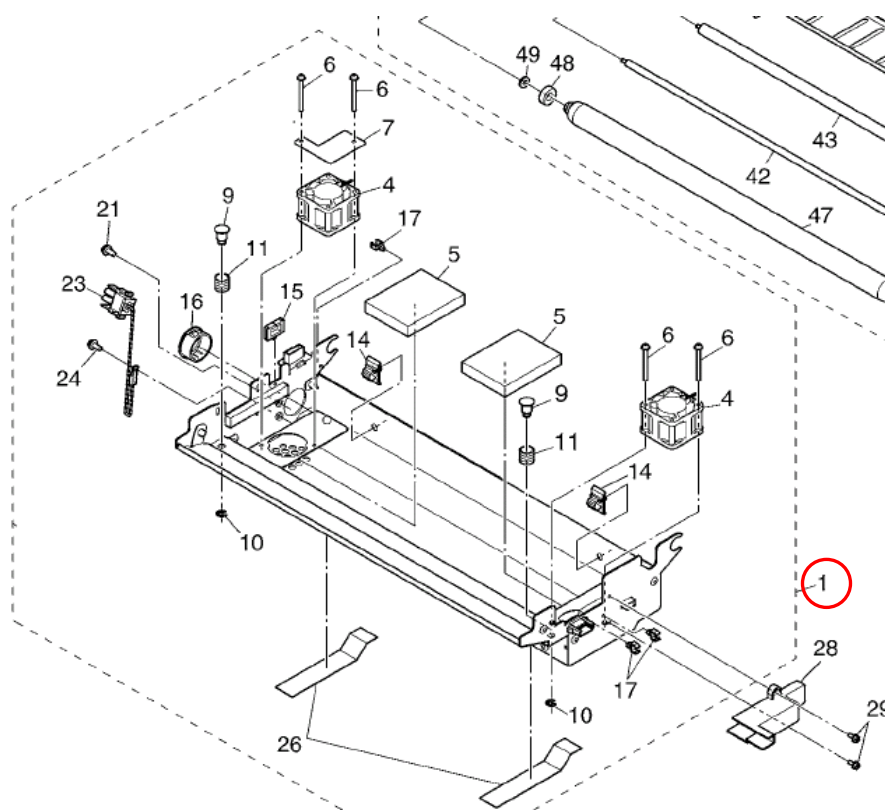
Pg. 74

Pg. 78(for RoHS Parts Catalog)

**Incorrect:**



**Correct :**

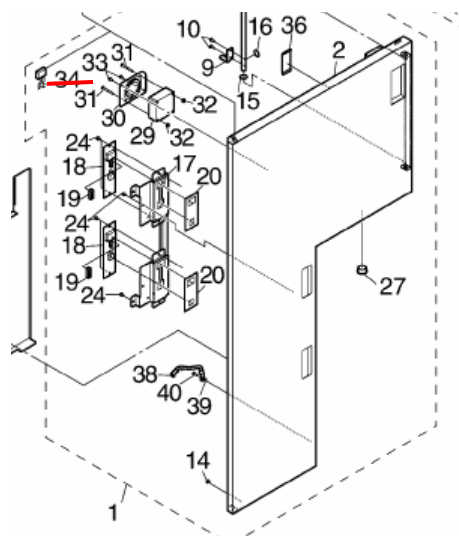


**Reissued: 22-Oct-08**

Model: EMP156	Date: 15-Nov-06	No.: MG155040a
---------------	-----------------	----------------

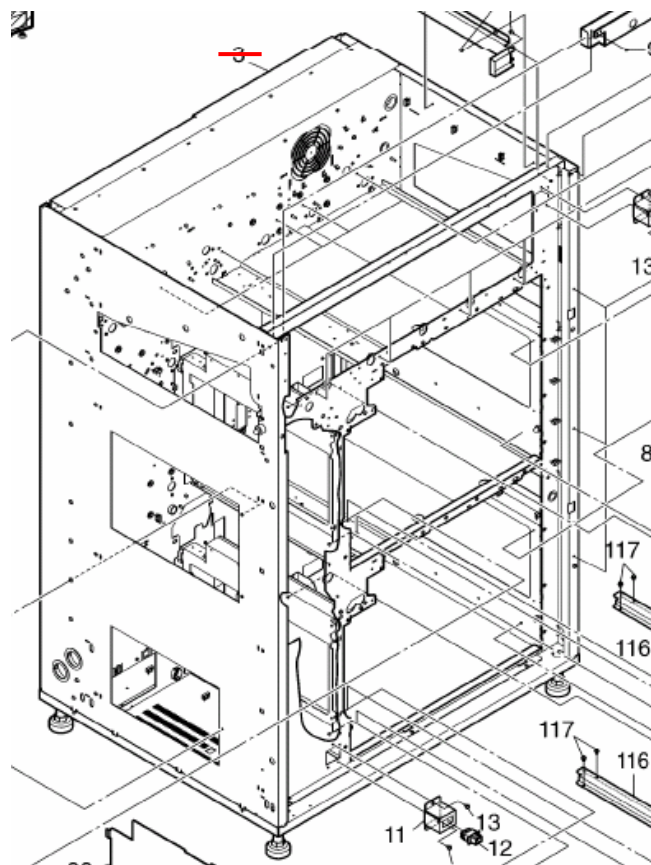
Pg. 78

Pg. 82(for RoHS parts catalog)



Pg. 80

Pg. 84(for RoHS parts catalog)





Reissued: 22-Oct-08

Model: EMP156

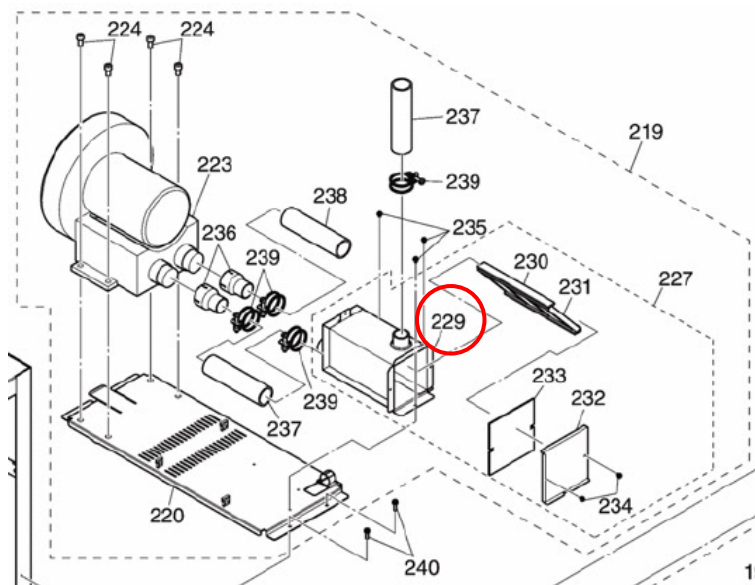
Date: 15-Nov-06

No.: MG155040a

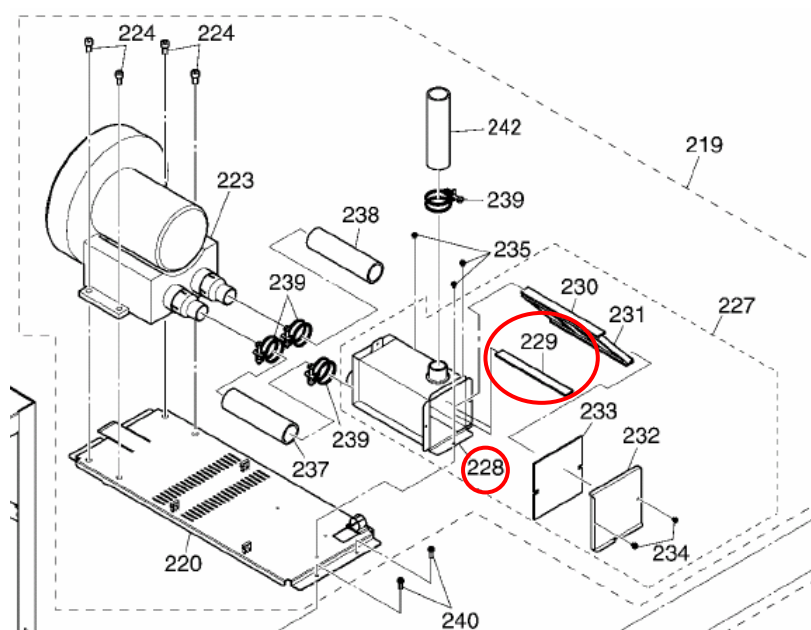
Pg. 102

Pg. 106(RoHS parts catalog)

**Incorrect:**



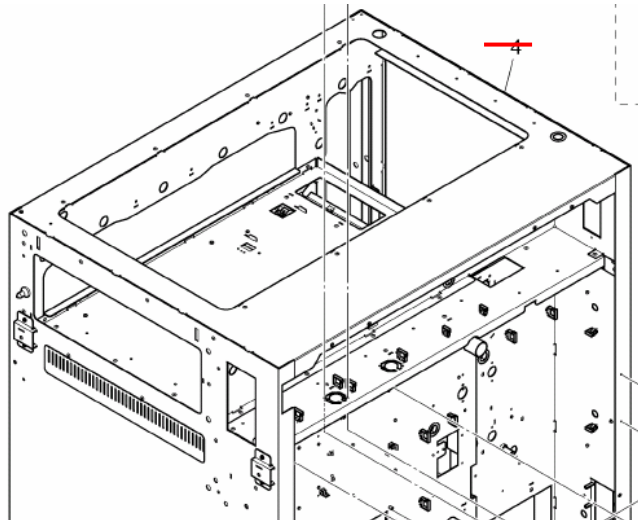
**Correct :**



**Reissued: 22-Oct-08****Model: EMP156****Date: 15-Nov-06****No.: MG155040a**

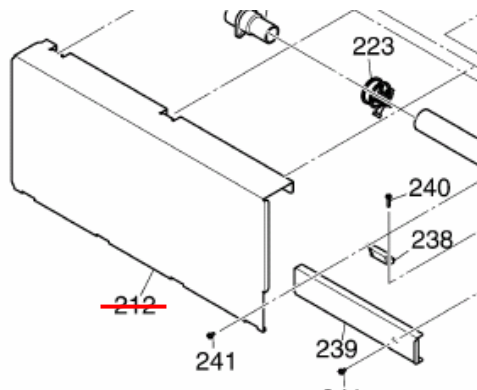
Pg. 102

Pg. 106(RoHS parts catalog)



Pg. 114

Pg. 118(RoHS parts catalog)



**Reissued: 22-Oct-08**

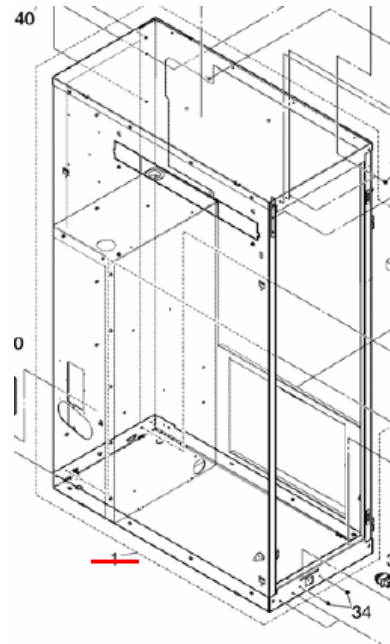
Model: EMP156

Date: 15-Nov-06

No.: MG155040a

Pg. 118

Pg. 122(RoHS parts catalog)



Model: EMP156		Date: 5-Jul-07	No.: MG155041
Modified Article: Regist and Timing and Roller Ass'y		Prepared by: Y.Minakawa	
From: QA/Service Planning Dept.			
Reason for Modification:	<input type="checkbox"/> Parts catalog correction <input type="checkbox"/> Vendor change <input type="checkbox"/> Other <input type="checkbox"/> To facilitate assembly <input checked="" type="checkbox"/> To improve reliability <input type="checkbox"/> To meet standards <input type="checkbox"/> Part standardization <input type="checkbox"/> Product Safety    (      )		

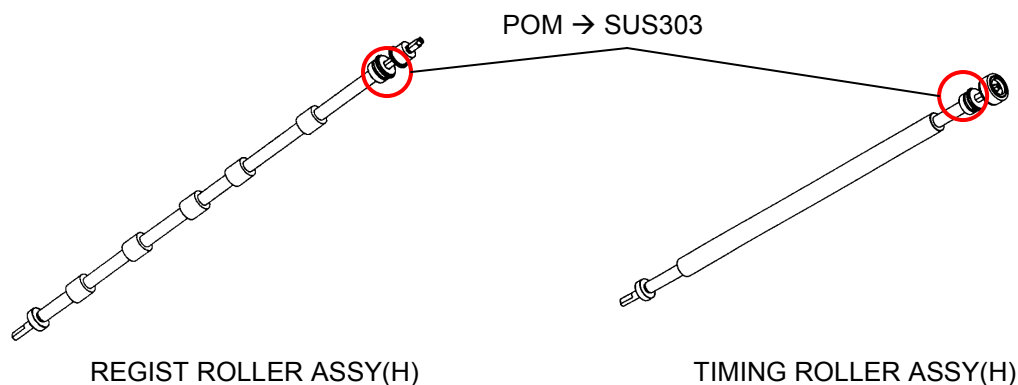
Old part number	New part number	Description	Q'ty	Int	Page	Index	Note
G1555912	G1552831	Regist Roller Ass'y(H)	1	X/O	47	38	
G1555915	G1552832	Timing Roller Ass'y(H)	1	X/O	47	39	

For RoHS parts catalog

Old part number	New part number	Description	Q'ty	Int	Page	Index	Note
G1555912	G1552831	Regist Roller Ass'y(H)	1	X/O	49	38	
G1555915	G1552832	Timing Roller Ass'y(H)	1	X/O	49	39	

**Change:** The material of the gear was changed from Polyacetal (POM) to stainless steel (SUS303).

**Reason:** To improve the strength of the gear.



### RCL (Japan) Production

MODEL NAME	V/Hz	DESTINATION	CODE	SERIAL NO.
EMP156	-	-	-	Q4960840042

Model: EMP156		Date: 19-Jul-07	No.: MG155042
Modified Article: Jogger unit Ass'y(H)		Prepared by: Y.Minakawa	
From: PPBG QA service Planning Dept.			
Reason for Modification:	<input type="checkbox"/> Parts catalog correction <input type="checkbox"/> Vendor change <input type="checkbox"/> Other <input type="checkbox"/> To facilitate assembly <input checked="" type="checkbox"/> To improve reliability <input type="checkbox"/> To meet standards <input type="checkbox"/> Part standardization <input type="checkbox"/> Product Safety    (      )		

## Change:

- 1) The Overlap Roller Holder Ass'y was added.
- 2) The Stopper Sub Ass'y (H) was separated into two pieces.

**Reason:** To improve paper registration accuracy.

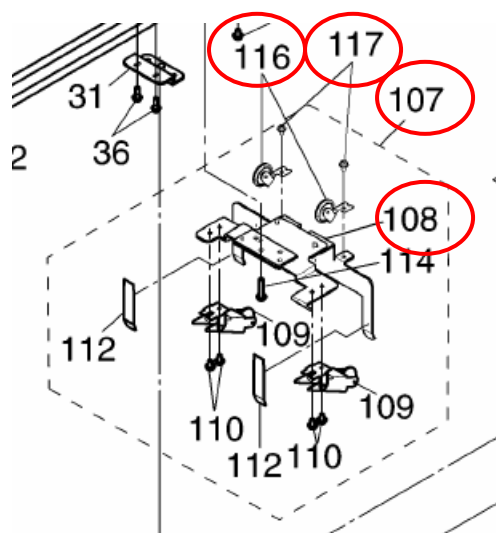
Old part number	New part number	New Description	Q'ty	Int	Page	Index	Note
G1555861	G1552828	Stopper Ass'y(H) 2	1	O/O	97	107	
G1551702	G1552829	Stopper Sub Ass'y(H)	1	X/O	97	108	
-	G1552065	Overlap Roller Holder Ass'Y	1	-	97	116	New index
-	G1501153	Screw M3X6	2	-	97	117	New index

## For RoHS parts catalog

Old part number	New part number	New Description	Q'ty	Int	Page	Index	Note
G1555861	G1552828	Stopper Ass'y(H) 2	1	O/O	101	107	
G1551702	G1552829	Stopper Sub Ass'y(H)	1	X/O	101	108	
-	G1552065	Overlap Roller Holder Ass'Y	1	-	101	116	New index
-	G1501153	Screw M3X6	2	-	101	117	New index

Pg. 96

Pg. 100(RoHS)



MODEL NAME	V/Hz	DESTINATION	CODE	SERIAL NO.
Additional Stacker EMP156	200,208,220,230,240 /50,60	USA/Europe	G865-00	Q5961060035
Standard Stacker EMP156	200,208,220,230,240 /50,60	USA/Europe	G865-01	Q6670250052

Model: EMP156		Date: 06-Sep-07	No.: MG155043
Modified Article: Fuser Ass'y		Prepared by: Y.Minakawa	
From: PPBG QA/service Planning Dept.			
Reason for Modification:	<input type="checkbox"/> Parts catalog correction	<input type="checkbox"/> Vendor change	<input checked="" type="checkbox"/> Other
	<input type="checkbox"/> To facilitate assembly	<input type="checkbox"/> To improve reliability	<input type="checkbox"/> To meet standards
	<input type="checkbox"/> Part standardization	<input type="checkbox"/> Product Safety	( )

**Change:** The thermostat assembly was registered as a service part.

**Reason:** To meet a request from the field.

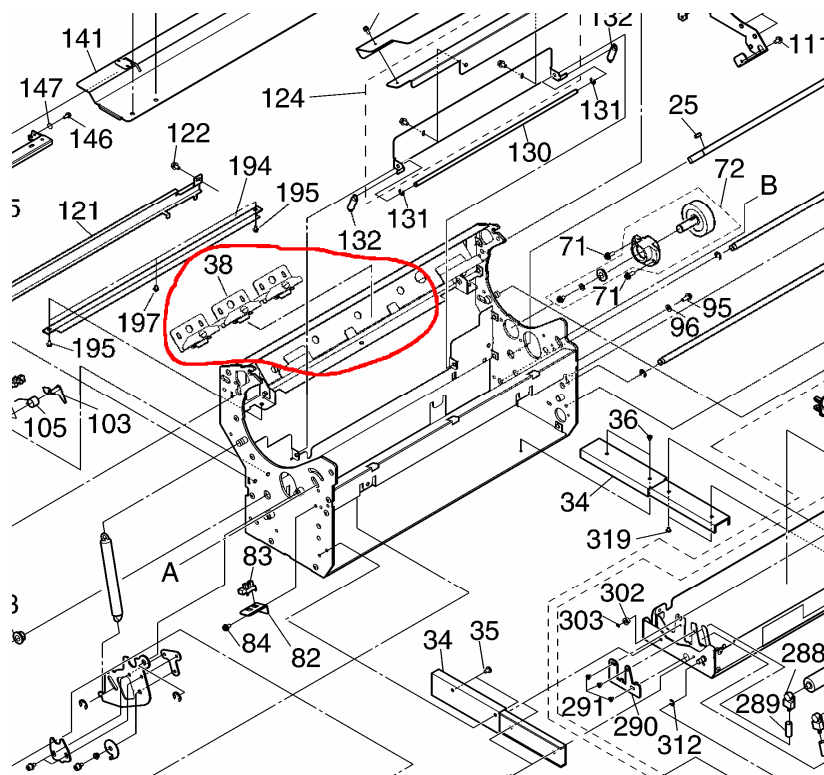
Old part number	New part number	New Description	Q'ty	Int	Page	Index	Note
-	G1552844	Thermostat Ass'y	1	-	55	38	

**Note:** This part **cannot** be replaced individually on fusing units that **do not** have the "J" blacked out on its unit revision. The serial numbers of these units are as follows:

RPSE model: 40600001, 41000003, 41000006

RPSA model: 40600002, 41000004, 41000005

Pg. 54



MODEL NAME	V/Hz	DESTINATION	CODE	SERIAL NO.
EMP156	200,208,220,230,240 /60	USA	G155-17	Q4970240051

Model: EMP		Date: 6-Mar-08	No.: MG155044
Modified Article: Parts Catalog Correction		Prepared by: T.Tadokoro	
From: PPBG QA/Service Planning Dept.			
Reason for Modification:	<input checked="" type="checkbox"/> Parts catalog correction <input type="checkbox"/> Vendor change <input type="checkbox"/> Other <input type="checkbox"/> To facilitate assembly <input type="checkbox"/> To improve reliability <input type="checkbox"/> To meet standards <input type="checkbox"/> Part standardization <input type="checkbox"/> Product Safety    (      )		

Old part number	New part number	Description	Q'ty	Int	Page	Index	Note
G1551260		SJ Paper Guide (U)	1	-	-	-	Delete
G1551922	-	AC Change Cable Ass'y	1	-	-	-	Delete

**Change:** These parts were deleted.

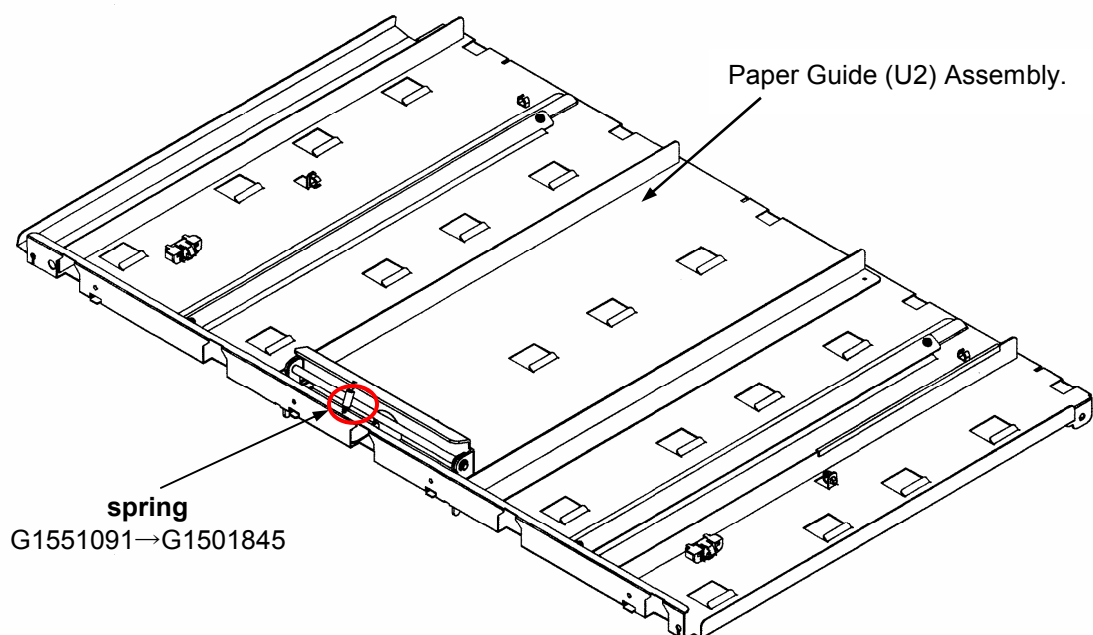
**Reason:** These parts are not appropriate for the field.

Model: EMP156		Date: 7-Mar-08	No.: MG155045
Modified Article: Change of the Paper Guide (U2) Assembly.		Prepared by: T.Tadokoro	
From: QA/Service Planning Dept.			
Reason for Modification:	<input type="checkbox"/> Parts catalog correction	<input type="checkbox"/> Vendor change	<input type="checkbox"/> Other
	<input type="checkbox"/> To facilitate assembly	<input checked="" type="checkbox"/> To improve reliability	<input type="checkbox"/> To meet standards
	<input type="checkbox"/> Part standardization	<input type="checkbox"/> Product Safety	( )

Old part number	New part number	Description	Q'ty	Int	Page	Index	Note
G1551091	G1501845	Tension Spring	1	X/O	112	57	

**Change:** The spring has been changed to a stronger type.

**Reason:** To improve the reliability of paper feeding by increasing paper traction at the Paper Guide.



Disposition of the original spring G1551091: As the original part is used in other units, stock can be allocated towards those units.

### RCL (Japan) Production

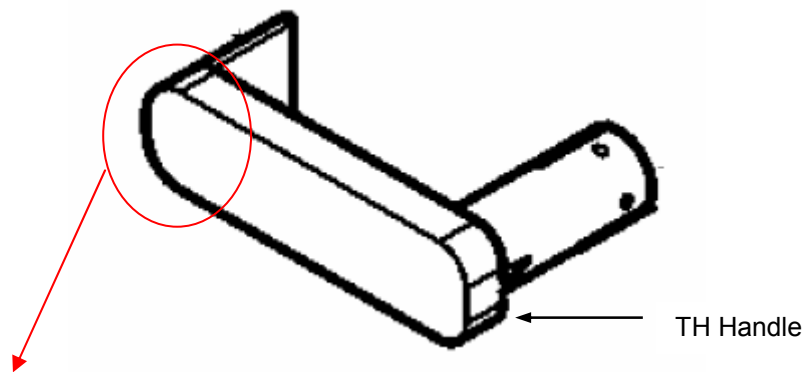
MODEL NAME	V/Hz	DESTINATION	CODE	SERIAL NO.
High Capacity Feeder 1	200,208,220,230,240 /50,60	USA/ Europe	G867-00	Q6180170045
High Capacity Feeder 2	200,208,220,230,240 /50,60	USA/ Europe	G866-00	Q6080180031



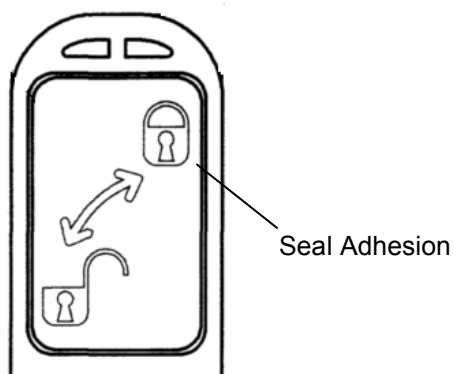
Model: EMP156		Date: 7-Oct-08	No.: MG155046
Modified Article: Change of the TH HANDLE (H) ASSY.		Prepared by: T.Tadokoro	
From: QA/Service Planning Dept.			
Reason for Modification:	<input type="checkbox"/> Parts catalog correction	<input type="checkbox"/> Vendor change	<input checked="" type="checkbox"/> Other
	<input type="checkbox"/> To facilitate assembly	<input type="checkbox"/> To improve reliability	<input type="checkbox"/> To meet standards
	<input type="checkbox"/> Part standardization	<input type="checkbox"/> Product Safety	( )

Old part number	New part number	Description	Q'ty	Int	Page	Index	Note
G1552326	G1552861	TH HANDLE (H) ASSY.	1	O/O	57	263	
			1	O/O	65	69	

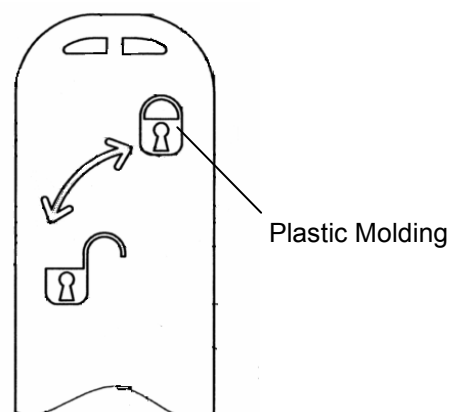
**Change/Reason:** Change of the Lock & Unlock marking from seal adhesion to plastic molding.



Before Change



After Change





Part Change Information List

Date: March 18, 2009

Model	Code	PCIL Number	PCIL Correction	Old part number	New part number	Description	Old Q'ty	New Q'ty	Int	3DPC	Page	Index	Set	Set Int	RTB	Note	Ref Number
EMP156	G155	200903	Add	G1555140	G1552870	PHOTOINTERRUPTOR	1	1	X/O		58	8					V0900031



Part Change Information List

Date: August 31, 2009

Model	Code	PCIL Nr.	PCIL Correction	Old part number	New part number	Description	Old Q'ty	New Q'ty	Int	3DPC	Page	Index	Set	Set Int	RTB	Note	Ref. Nr.	ECN Nr.
EMP156	G155	200908		G1555140	G1552870	EJECT SENSOR ASSY	0	1	X/O		58	8			Y	RG155032	V0900031	8121449
EMP156	G155	200908		G1555140		PHOTOINTERRUPTOR	5	4							Y	RG155032	V0900031	8121449

Model	Code	PCIL Nr.	PCIL Correction	Old part number	New part number	Description	Old Qty	New Qty	Int	3DPC	Page	Index	Set	Set Int	RTB	Note	Ref. Nr.	ECN Nr.
EMP156	G155	201011			G1552865	PLATE.SUB-ASSY	0	1			72	68			RG155035		V0903056	08090975



Part Change Information List

Date: April 28, 2016

Model	Code	PCIL Number	PCIL Correction	Old part number	New part number	Description	Old Q'ty	New Q'ty	Int	3DPC	Page	Index	Set	Set Int	RTB	Note	Ref Number	ECN Number
EMP156	G155	201604		G1555148	G1552868	ROCKER SWITCH	1	1	O/O	N	18	323					V0804547	