

Model: DDP70/92/184		Date: 30-Jan-06	No.: MG150001
Modified Article: Parts Catalog Correction		Prepared by: Y.Minakawa	
From: 2nd Tech. Support Sec. Service Support Dept.			
Reason for Modification:	<input checked="" type="checkbox"/> Parts catalog correction <input type="checkbox"/> Vendor change <input type="checkbox"/> Other <input type="checkbox"/> To facilitate assembly <input type="checkbox"/> To improve reliability <input type="checkbox"/> To meet standards <input type="checkbox"/> Part standardization <input type="checkbox"/> Product Safety ()		

Change: The part was deleted from Service Parts.

Reason: The part is user-replaceable.

Note: The illustrations on pg. 14 (DDP70/92) and pg. 22 (DDP184) were also deleted.

DDP70/92

Old part number	New part number	Description	Q'ty	Int	Page	Index	Note
G1501179	-	Drum Unit DDP70/92/184	1-0	-	15	1	

DDP184

Old part number	New part number	Description	Q'ty	Int	Page	Index	Note
G1501179	-	Drum Unit DDP70/92/184	1-0	-	23	1	

Model: DDP184		Date: 30-Jan-06	No.: MG150002
Modified Article: Parts Catalog Correction		Prepared by: Y.Minakawa	
From: 2nd Tech. Support Sec. Service Support Dept.			
Reason for Modification:	<input checked="" type="checkbox"/> Parts catalog correction <input type="checkbox"/> Vendor change <input type="checkbox"/> Other <input type="checkbox"/> To facilitate assembly <input type="checkbox"/> To improve reliability <input type="checkbox"/> To meet standards <input type="checkbox"/> Part standardization <input type="checkbox"/> Product Safety ()		

DDP70/92

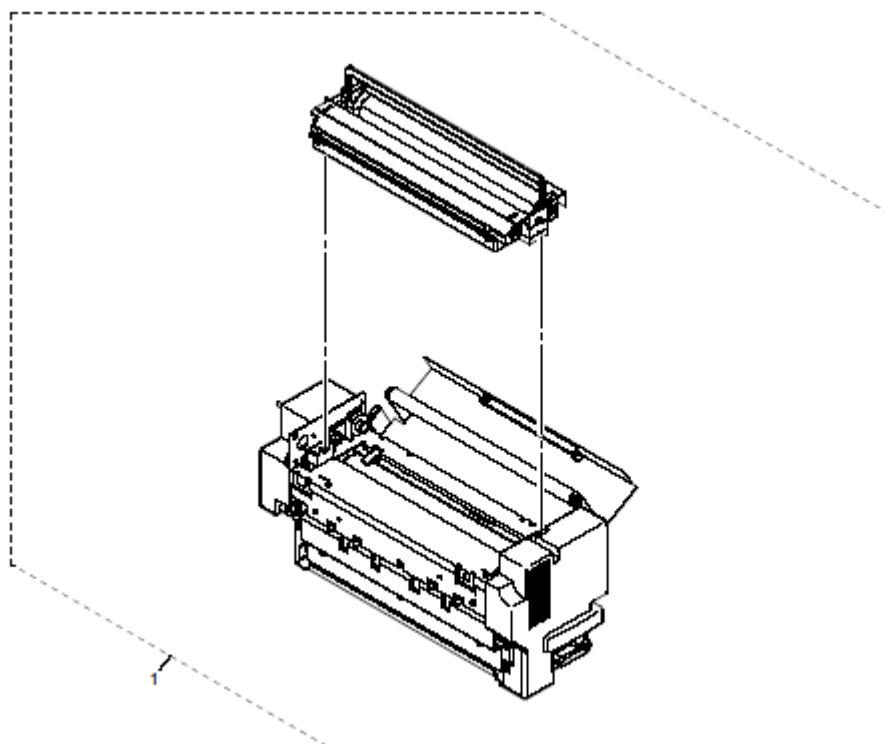
Old part number	New part number	Old Description	New Description	Q'ty	Int	Page	Index	Note
G1501310	-	Fuser Cleaning Web DDP70/92/184		1-0	-	39	1	
G1521130	G1521130	Development Unit	Fuser Unit – Front Engine	1-1	-	39	2→1	

Change:

- 1) The Fuser Cleaning Web was deleted from Service Parts.
- 2) The description for G1521130 was corrected.

Reason:

- 1) The part is user-replaceable.
- 2) The description in the Parts Catalog was incorrect.



Model: DDP92		Date: 30-Jan-06	No.: MG150003
Modified Article: Parts Catalog Correction		Prepared by: Y.Minakawa	
From: 2nd Tech. Support Sec. Service Support Dept.			
Reason for Modification:	<input checked="" type="checkbox"/> Parts catalog correction <input type="checkbox"/> Vendor change <input type="checkbox"/> Other <input type="checkbox"/> To facilitate assembly <input type="checkbox"/> To improve reliability <input type="checkbox"/> To meet standards <input type="checkbox"/> Part standardization <input type="checkbox"/> Product Safety ()		

Part Number	Incorrect Description	Correct Description	Q'ty	Page	Index	Note
G1511063	Development Unit	Fuser Unit	1	27	1	

Change/Reason: The description for this part was corrected.

Model: DDP92 HCF		Date: 30-Jan-06	No.: MG150004
Modified Article: Parts Catalog Correction		Prepared by: Y.Minakawa	
From: 2nd Tech. Support Sec. Service Support Dept.			
Reason for Modification:	<input checked="" type="checkbox"/> Parts catalog correction <input type="checkbox"/> Vendor change <input type="checkbox"/> Other <input type="checkbox"/> To facilitate assembly <input type="checkbox"/> To improve reliability <input type="checkbox"/> To meet standards <input type="checkbox"/> Part standardization <input type="checkbox"/> Product Safety ()		

Part Number	Incorrect Description	Correct Description	Q'ty	Page	Index	Note
G1511031	Toner Hopper Ass'y	Hopper Controll Board	1	4	24	

Change/Reason: The description for this part was corrected.

Model: DDP184-HCF		Date: 30-Jan-06	No.: MG150005
Modified Article: Parts Catalog Correction		Prepared by: Y.Minakawa	
From: 2nd Tech. Support Sec. Service Support Dept.			
Reason for Modification:	<input checked="" type="checkbox"/> Parts catalog correction <input type="checkbox"/> Vendor change <input type="checkbox"/> Other <input type="checkbox"/> To facilitate assembly <input type="checkbox"/> To improve reliability <input type="checkbox"/> To meet standards <input type="checkbox"/> Part standardization <input type="checkbox"/> Product Safety ()		

Part Number	Incorrect Description	Correct Description	Q'ty	Page	Index	Note
G1511031	Toner Hopper Ass'y	Hopper Controll Board	1	4	24	

Change/Reason: The description for this part was corrected.

Model: DDP184		Date: 9-Feb-06	No.: MG150006
Modified Article: Parts Catalog Correction		Prepared by: Y.Minakawa	
From: 2nd Tech. Support Sec. Service Support Dept.			
Reason for Modification:	<input type="checkbox"/> Parts catalog correction <input type="checkbox"/> Vendor change <input checked="" type="checkbox"/> Other <input type="checkbox"/> To facilitate assembly <input type="checkbox"/> To improve reliability <input type="checkbox"/> To meet standards <input type="checkbox"/> Part standardization <input type="checkbox"/> Product Safety ()		

Please note the following information. The P/N for these parts were not changed.

Part Number	Description	Q'ty	Page	Index
G1521028	Development Unit ASS'Y	1	28	1
G1521029	Development Unit ASS'Y	1	28	8
G1521030	Development Unit ASS'Y	1	28	10
G1521031	Development Unit ASS'Y	1	28	2

Note:

- G1521028 is the **black** development unit (rear engine only)
- G1521029 is the **blue** development unit (rear engine only)
- G1521030 is the **red** development unit (rear engine only)
- G1521031 is the **green** development unit (rear engine only)

Part Number	Description	Q'ty	Page	Index
G1521063	Tonner Hopper Assy	1	33	1
G1521064	Tonner Hopper Assy	1	33	2

Note:

- G1521063 is the **black** toner hopper
- G1521064 is the **color** toner hopper

Model: DDP70		Date: 9-Feb-06	No.: MG150007
Modified Article: Parts Catalog Correction		Prepared by: Y.Minakawa	
From: 2nd Tech. Support Sec. Service Support Dept.			
Reason for Modification:	<input checked="" type="checkbox"/> Parts catalog correction <input type="checkbox"/> Vendor change <input type="checkbox"/> Other <input type="checkbox"/> To facilitate assembly <input type="checkbox"/> To improve reliability <input type="checkbox"/> To meet standards <input type="checkbox"/> Part standardization <input type="checkbox"/> Product Safety ()		

Please note the following information. The P/N for these parts were not changed.

Part Number	Description	Q'ty	Int	Page	Index
G1501402	CE Box Cover Ass'y	1	-	6	44
G1501874	CE Box Cover Ass'y	1	-	6	44

Note:

- G1501402 supports **PCL only**.
- G1501874 supports **PCL and PS**.
 - To use this part, you need to install the Adobe Postscript 3 Upgrade Kit (G86900).

Part Number	Description	Q'ty	Int	Page	Index
G1501875	Controller Board(70) Ass'y	1	-	6	47
G1501877	Controller Board(70) Ass'y	1	-	6	47

Note:

- G1501877 supports **PCL only**.
- G1501875 supports **PCL and PS**.
 - To use this part, you need to install the Adobe Postscript 3 Upgrade Kit (G86900).

Model: DDP184		Date: 14-Mar-06	No.: MG150008
Modified Article: Control Unit		Prepared by: Y.Minakawa	
From: 2nd Tech. Support Sec. Service Support Dept.			
Reason for Modification:	<input checked="" type="checkbox"/> Parts catalog correction <input type="checkbox"/> Vendor change <input type="checkbox"/> Other <input type="checkbox"/> To facilitate assembly <input type="checkbox"/> To improve reliability <input type="checkbox"/> To meet standards <input type="checkbox"/> Part standardization <input type="checkbox"/> Product Safety ()		

Old part number	New part number	Description	Q'ty	Int	Page	Index	Note
G1521191	G1521343	Control Unit	1	O/O	65	1	
G1521177	G1521194	Ram Board	1	X/X	65	2	512M
G1521176	G1521193	Main Control Board –Kit	1	X/X	65	3	

Change: Vendor change.

Reason: The old control unit was discontinued from production.

Model: DDP70/92/184		Date: 17-Apr-06	No.: MG150009
Modified Article: Separator ass'y		Prepared by: N.Sakamoto	
From: gt			
Reason for Modification:	<input type="checkbox"/> Parts catalog correction <input type="checkbox"/> Vendor change <input type="checkbox"/> Other <input type="checkbox"/> To facilitate assembly <input checked="" type="checkbox"/> To improve reliability <input type="checkbox"/> To meet standards <input type="checkbox"/> Part standardization <input type="checkbox"/> Product Safety ()		

DDP70/92

Old part number	New part number	Description	Q'ty	Page	Index	Note
-	G1501890	Separator Ass'y	3	43	84	For pre-punched paper and thick paper

DDP184

Old part number	New part number	Description	Q'ty	Page	Index	Note
-	G1501890	Separator Ass'y	3	57	84	For pre-punched paper and thick paper

Change: A new separator assembly was added.

Reason: To reduce multi-feed jams when the customer uses thick or pre-punched paper.

Important: Only use this part in the following special cases:

1. You need to reduce multi-feed jams with **thick** or **pre-punched** paper, and
2. You cannot reduce these jams enough with the G1501712 separator assembly

Note: See RTB No. RG150013 for details.

Model: DDP70		Date: 7-Jun-06	No.: MG150010
Modified Article: RoHS Directive		Prepared by: Y.Minakawa	
From: 2nd Tech. Support Sec. Service Support Dept.			
Reason for Modification:	<input type="checkbox"/> Parts catalog correction <input type="checkbox"/> Vendor change <input checked="" type="checkbox"/> Other <input type="checkbox"/> To facilitate assembly <input type="checkbox"/> To improve reliability <input type="checkbox"/> To meet standards <input type="checkbox"/> Part standardization <input type="checkbox"/> Product Safety ()		

Change: The materials of the following parts were changed.

Reason: To comply with the RoHS Directive.

Old part number	New part number	Description	Q'ty	Int	Page	Index	Note
G1501158	G1502040	Screw M3x25	1	X/X	43	27	
G1501220	G1508220	Drum Drive Unit	1	X/X	23	1	
G1501295	G1508295	Geared Motor 2000 - DC3W	1	X/X	43	36	
G1501312	G1508312	Geared Motor 500 - DC1W	2	X/X	43	26	
G1501335	G1508335	DC Brushless Motor 1 - DC25W	1	X/X	23	4	
G1501375	G1508375	Power Transformer Ass'y	1	X/X	7	87	
G1501398	G1508398	Operation Panel Ass'y	1	X/X	7	60	
G1501671	G1508671	Operation Panel:Ass'y	1	X/X	7	81	
G1501677	G1508677	Sdram(1) DIMM Ass'y	1	X/X	7	84	
G1501875	G1508875	Controller Board(70) Ass'y(PSPCL)	1	X/X	7	47	
G1501877	G1508877	Controller Board(70) Ass'y(PCL)	1	X/X	7	47	

RCL (Japan) Production

MODEL NAME	V/Hz	DESTINATION	CODE	SERIAL NO.
DDP70	200 - 240V/50,60Hz	USA	G150-17	Q4660X02018
DDP70	200 - 240V/50,60Hz	Europe	G150-27	Q4660405031

Model: DDP92		Date: 7-Jun-06	No.: MG150011
Modified Article: RoHS Directive		Prepared by: Y.Minakawa	
From: 2nd Tech. Support Sec. Service Support Dept.			
Reason for Modification:	<input type="checkbox"/> Parts catalog correction <input type="checkbox"/> Vendor change <input checked="" type="checkbox"/> Other <input type="checkbox"/> To facilitate assembly <input type="checkbox"/> To improve reliability <input type="checkbox"/> To meet standards <input type="checkbox"/> Part standardization <input type="checkbox"/> Product Safety ()		

Change: The materials of the following parts were changed.

Reason: To comply with the RoHS Directive.

Old part number	New part number	Description	Q'ty	Int	Page	Index	Note
G1501158	G1502040	Screw M3x25	6	X/X	43	27	
G1501295	G1508295	Geared Motor 2000 - DC3W	1	X/X	43	36	
G1501312	G1508312	Geared Motor 500 - DC1W	2	X/X	43	26	
G1501671	G1508671	Operation Panel:Ass'y	1	X/X	7	86	
G1501677	G1508677	Sdram(1) DIMM Ass'y	1	X/X	7	88	
G1511009	G1518009	Drive:Ass'y	1	X/X	23	1	
G1511023	G1518023	DC Motor	1	X/X	23	4	
G1511034	G1518034	Main Control:Ass'y	1	X/X	7	90	
G1511035	G1518035	Operation Panel:Ass'y	1	X/X	7	70	
G1511085	G1518085	Control Board:Ass'y(PSPCL)	1	X/X	7	87	
G1511094	G1518094	Control Board:Ass'y(PCL)	1	X/X	7	87	

RCL (Japan) Production

MODEL NAME	V/Hz	DESTINATION	CODE	SERIAL NO.
DDP92	200 - 240V/50,60Hz	USA	G151-17	Q4760X02031
DDP92	200 - 240V/50,60Hz	Europe	G151-27	Q4760405039

Model: DDP184		Date: 7-Jun-06	No.: MG150012
Modified Article: RoHS Directive		Prepared by: Y.Minakawa	
From: 2nd Tech. Support Sec. Service Support Dept.			
Reason for Modification:	<input type="checkbox"/> Parts catalog correction <input type="checkbox"/> Vendor change <input checked="" type="checkbox"/> Other <input type="checkbox"/> To facilitate assembly <input type="checkbox"/> To improve reliability <input type="checkbox"/> To meet standards <input type="checkbox"/> Part standardization <input type="checkbox"/> Product Safety ()		

Change: The materials of the following parts were changed.

Reason: To comply with the RoHS Directive.

Old part number	New part number	Description	Q'ty	Int	Page	Index	Note
G1501158	G1502040	Screw M3x25→ Screw M3x30	X/X	4	11	4	
				4	15	4	
				6	57	27	
G1501295	G1508295	Geared Motor 2000 - DC3W	X/X	1	57	36	
G1501312	G1508312	Geared Motor 500 - DC1W	X/X	2	57	26	
G1501671	G1508671	Operation Panel:Ass'y	X/X	1	9	86	
				1	13	111	
G1501677	G1508677	Sdram(1) DIMM Ass'y	X/X	2	9	87	
				2	13	112	
G1511009	G1518009	Drive:Ass'y	X/X	1	35	1	
G1511023	G1518023	DC Motor	X/X	1	35	4	
				1	67	4	
G1521037	G1528037	Drum Drive Sub-Unit	X/X	1	67	1	
G1521074	G1528074	OPERATION PANEL:ASS'Y	X/X	1	9	113	
G1521078	G1528078	OPTICAL UNIT:ASS'Y	X/X	1	9	90	
G1521079	G1528079	OPTICAL UNIT:ASS'Y	X/X	1	13	116	
G1521178	G1528178	Hdd	X/X	1	65	5	
G1521179	G1528179	Lan Adapter	X/X	2	65	6	
G1521180	G1528180	Power Supply Unit	X/X	1	65	7	
G1521181	G1528181	Operation Panel	X/X	1	65	8	
G1521182	G1528182	Cable	X/X	2	65	9	
G1521186	G1528186	DEVELOPMENT SECTION	X/X	1	9	88	
G1521187	G1528187	TOOL BAG:ASS'Y	X/X	1	13	113	
G1521193	G1528176	Main Control Board -Kit	X/X	1	65	3	
G1521194	G1528177	Ram Board	X/X	1	65	2	
G1521343	G1528191	Control Unit	X/X	1	65	1	

RCL (Japan) Production

MODEL NAME	V/Hz	DESTINATION	CODE	SERIAL NO.
DDP184	200 - 240V/50,60Hz	USA	G152-17	Q4860X02010
DDP184	200 - 240V/50,60Hz	Europe	G152-27	Q4860405026

Model: Container Stacker 1,2 DDP		Date: 7-Jun-06	No.: MG150013
Modified Article: RoHS Directive		Prepared by: Y.Minakawa	
From: 2nd Tech. Support Sec. Service Support Dept.			
Reason for Modification:	<input type="checkbox"/> Parts catalog correction <input type="checkbox"/> Vendor change <input checked="" type="checkbox"/> Other <input type="checkbox"/> To facilitate assembly <input type="checkbox"/> To improve reliability <input type="checkbox"/> To meet standards <input type="checkbox"/> Part standardization <input type="checkbox"/> Product Safety ()		

Change: The materials of the following parts were changed.

Reason: To comply with the RoHS Directive.

Old part number	New part number	Description	Q'ty	Int	Page	Index	Note
G1501295	G1508295	Geared Motor 2000 - DC3W	XX	2	17	18	
G8511054	G8518054	Fork Lift Ass'y	XX	2	17	1	

RCL (Japan) Production

MODEL NAME	V/Hz	DESTINATION	CODE	SERIAL NO.
Container Stacker 1 DDP70e	200 - 240V/50,60Hz	USA/Europe	G851-00	Q65604XXXXX
Container Stacker 2 DDP70e	200 - 240V/50,60Hz	USA/Europe	G852-00	Q52604XXXXX
Container Stacker 1 DDP92/184	200 - 240V/50,60Hz	USA/Europe	G859-00	Q55604XXXXX
Container Stacker 2 DDP92/184	200 - 240V/50,60Hz	USA/Europe	G860-00	Q56604XXXXX

Model: High Capacity Feeder DDP70		Date: 7-Jun-06	No.: MG150014
Modified Article: RoHS Directive		Prepared by: Y.Minakawa	
From: 2nd Tech. Support Sec. Service Support Dept.			
Reason for Modification:	<input type="checkbox"/> Parts catalog correction <input type="checkbox"/> Vendor change <input checked="" type="checkbox"/> Other <input type="checkbox"/> To facilitate assembly <input type="checkbox"/> To improve reliability <input type="checkbox"/> To meet standards <input type="checkbox"/> Part standardization <input type="checkbox"/> Product Safety ()		

Change: The materials of the following parts were changed.

Reason: To comply with the RoHS Directive.

Old part number	New part number	Description	Q'ty	Int	Page	Index	Note
G1501295	G1508295	Geared Motor 2000 - DC3W	1	X/X	5	9	

RCL (Japan) Production

MODEL NAME	V/Hz	DESTINATION	CODE	SERIAL NO.
High Capacity Feeder DDP70	200 - 240V/50,60Hz	USA/Europe	G853-00	Q53604XXXXX

Model: High Capacity Feeder DDP92/184		Date: 7-Jun-06	No.: MG150015
Modified Article: RoHS Directive		Prepared by: Y.Minakawa	
From: 2nd Tech. Support Sec. Service Support Dept.			
Reason for Modification:	<input type="checkbox"/> Parts catalog correction <input type="checkbox"/> Vendor change <input checked="" type="checkbox"/> Other <input type="checkbox"/> To facilitate assembly <input type="checkbox"/> To improve reliability <input type="checkbox"/> To meet standards <input type="checkbox"/> Part standardization <input type="checkbox"/> Product Safety ()		

Change: The materials of the following parts were changed.

Reason: To comply with the RoHS Directive.

Old part number	New part number	Description	Q'ty	Int	Page	Index	Note
G1501295	G1508295	Geared Motor 2000 - DC3W	1	X/X	5	9	

RCL (Japan) Production

MODEL NAME	V/Hz	DESTINATION	CODE	SERIAL NO.
High Capacity Feeder DDP92/184	200 - 240V/50,60Hz	USA/Europe	G862-00	Q58604XXXXX

Model: DDP70		Date:19-Jul-06	No.: MG150016
Modified Article: Exterior 1		Prepared by: Y.Minakawa	
From: 2nd Tech. Support Sec. Service Support Dept.			
Reason for Modification:	<input type="checkbox"/> Parts catalog correction <input type="checkbox"/> Vendor change <input type="checkbox"/> Other <input type="checkbox"/> To facilitate assembly <input checked="" type="checkbox"/> To improve reliability <input type="checkbox"/> To meet standards () <input type="checkbox"/> Part standardization <input type="checkbox"/> Product Safety		

Old part number	New part number	Description	Q'ty	Int	Page	Index	Note
-	G1502042	PS Air Filter	1	-	7	109	

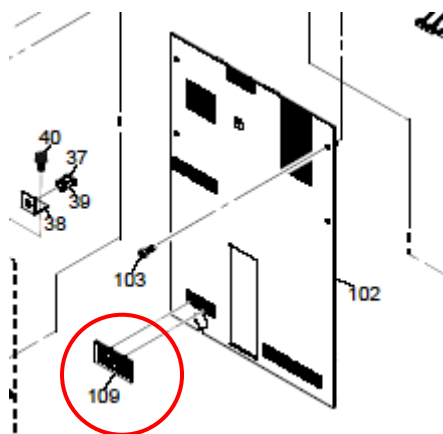
RoHS Parts Catalog:

Old part number	New part number	Description	Q'ty	Int	Page	Index	Note
-	G1502042	PS Air Filter	1	-	7	109	

Change: The PS Air Filter was added to the printer rear cover.

Reason: To further protect the inside of the printer from dust.

Illustration change
Pg.6



RCL (Japan) Production

MODEL NAME	V/Hz	DESTINATION	CODE	SERIAL NO.
DDP70	200 - 240V/50,60Hz	USA	G150-17	Q4660X02018
DDP70	200 - 240V/50,60Hz	Europe	G150-27	Q4660405031

Model: DDP92		Date:19-Jul-06	No.:MG150017
Modified Article: Exterior 1		Prepared by: Y.Minakawa	
From: 2nd Tech. Support Sec. Service Support Dept.			
Reason for Modification:	<input type="checkbox"/> Parts catalog correction <input type="checkbox"/> Vendor change <input type="checkbox"/> Other <input type="checkbox"/> To facilitate assembly <input checked="" type="checkbox"/> To improve reliability <input type="checkbox"/> To meet standards () <input type="checkbox"/> Part standardization <input type="checkbox"/> Product Safety		

Old part number	New part number	Description	Q'ty	Int	Page	Index	Note
-	G1502042	PS Air Filter	1	-	7	119	

RoHS Parts Catalog:

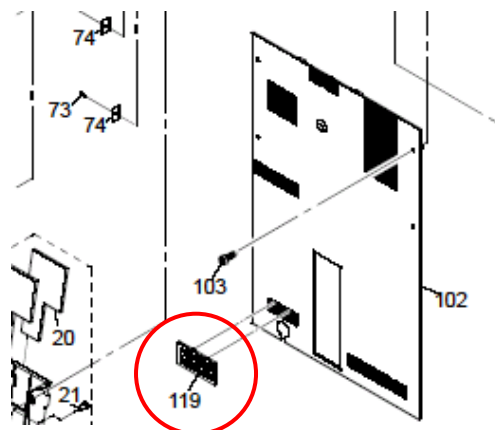
Old part number	New part number	Description	Q'ty	Int	Page	Index	Note
-	G1502042	PS Air Filter	1	-	9	119	

Change: The PS Air Filter was added to the printer rear cover.

Reason: To further protect the inside of the printer from dust.

Illustration change

Pg.6


RCL (Japan) Production

MODEL NAME	V/Hz	DESTINATION	CODE	SERIAL NO.
DDP92	200 - 240V/50,60Hz	USA	G151-17	Q4760X02031
DDP92	200 - 240V/50,60Hz	Europe	G151-27	Q4760405039

Model: DDP184		Date:19-Jul-06	No.:MG150018
Modified Article: Exterior 1		Prepared by: Y.Minakawa	
From: 2nd Tech. Support Sec. Service Support Dept.			
Reason for Modification:	<input type="checkbox"/> Parts catalog correction <input type="checkbox"/> Vendor change <input type="checkbox"/> Other <input type="checkbox"/> To facilitate assembly <input checked="" type="checkbox"/> To improve reliability <input type="checkbox"/> To meet standards () <input type="checkbox"/> Part standardization <input type="checkbox"/> Product Safety		

Old part number	New part number	Description	Q'ty	Int	Page	Index	Note
-	G1502042	PS Air Filter	1	-	8	110	
			1	-	12	187	

RoHS Parts Catalog:

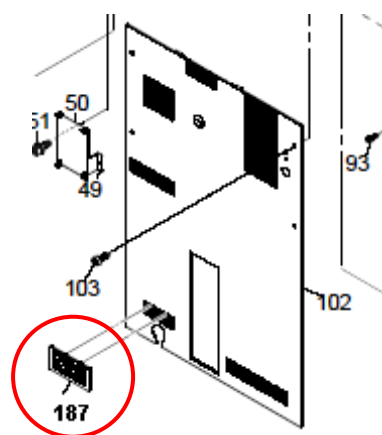
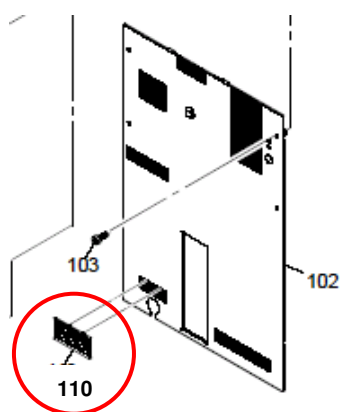
Old part number	New part number	Description	Q'ty	Int	Page	Index	Note
-	G1502042	PS Air Filter	1	-	9	110	
			1	-	15	128	

Change: The PS Air Filter was added to the printer rear cover.

Reason: To further protect the inside of the printer from dust.

Illustration change

Pg.



RCL (Japan) Production

MODEL NAME	V/Hz	DESTINATION	CODE	SERIAL NO.
DDP184	200 - 240V/50,60Hz	USA	G152-17	Q4860X02010
DDP184	200 - 240V/50,60Hz	Europe	G152-27	Q4860405026

Model: DDP70		Date:19-Jul-06	No.: MG150019
Modified Article: Parts Catalog Correction		Prepared by: Y.Minakawa	
From: 2nd Tech. Support Sec. Service Support Dept.			
Reason for Modification:	<input checked="" type="checkbox"/> Parts catalog correction <input type="checkbox"/> Vendor change <input type="checkbox"/> Other <input type="checkbox"/> To facilitate assembly <input type="checkbox"/> To improve reliability <input type="checkbox"/> To meet standards <input type="checkbox"/> Part standardization <input type="checkbox"/> Product Safety ()		

Old part number	New part number	Old Description	Q'ty	Int	Page	Index	Note
G1501645	-	S Paper Guide (1)	1-0	-	31	42	
G1501107	-	LED Eraser	1-0	-	33	27	

RoHS Parts Catalog:

Old part number	New part number	Old Description	Q'ty	Int	Page	Index	Note
G1501645	-	S Paper Guide (1)	1-0	-	29	42	

Change: The parts in the table were deleted.

Reason: Parts Catalog error.

Model: DDP70/92/184		Date:19-Jul-06	No.: MG150020
Modified Article: CLEANER UNIT		Prepared by: Y.Minakawa	
From: 2nd Tech. Support Sec. Service Support Dept.			
Reason for Modification:	<input type="checkbox"/> Parts catalog correction <input type="checkbox"/> Vendor change <input type="checkbox"/> Other <input type="checkbox"/> To facilitate assembly <input checked="" type="checkbox"/> To improve reliability <input type="checkbox"/> To meet standards <input type="checkbox"/> Part standardization <input type="checkbox"/> Product Safety ()		

Change: The shapes of the Transfer Corona Unit Cleaner and Separating Corona Unit Cleaner were changed.

Reason: To improve the cleaning performance of these parts.

● **DDP70**

Old part number	New part number	Description	Q'ty	Int	Page	Index	Note
G1501829	G1502044	Transfer Corona Unit Cleaner	1	O/O	33	16	
G1501830	G1502045	Separating Corona Unit Cleaner	1	O/O	33	12	

RoHS Parts Catalog:

Old part number	New part number	Description	Q'ty	Int	Page	Index	Note
G1501829	G1502044	Transfer Corona Unit Cleaner	1	O/O	31	16	
G1501830	G1502045	Separating Corona Unit Cleaner	1	O/O	31	12	

● **DDP92**

Old part number	New part number	Description	Q'ty	Int	Page	Index	Note
G1501829	G1502044	Transfer Corona Unit Cleaner	1	O/O	33	12	
G1501830	G1502045	Separating Corona Unit Cleaner	1	O/O	33	11	

RoHS Parts Catalog:

Old part number	New part number	Description	Q'ty	Int	Page	Index	Note
G1501829	G1502044	Transfer Corona Unit Cleaner	1	O/O	31	16	
G1501830	G1502045	Separating Corona Unit Cleaner	1	O/O	31	12	

Model: DDP70/92/184	Date:19-Jul-06	No.: MG150020
---------------------	----------------	---------------

● DDP184

Old part number	New part number	Description	Q'ty	Int	Page	Index	Note
G1501829	G1502044	Transfer Corona Unit Cleaner	1	O/O	47	12	
G1501830	G1502045	Separating Corona Unit Cleaner	1	O/O	47	11	

RoHS Parts Catalog:

Old part number	New part number	Description	Q'ty	Int	Page	Index	Note
G1501829	G1502044	Transfer Corona Unit Cleaner	1	O/O	47	12	
G1501830	G1502045	Separating Corona Unit Cleaner	1	O/O	47	11	

RCL (Japan) Production

MODEL NAME	V/Hz	DESTINATION	CODE	SERIAL NO.
DDP70	200 - 240V/50,60Hz	USA	G150-17	Q4660602018
DDP70	200 - 240V/50,60Hz	Europe	G150-27	Q4660605045
DDP92	200 - 240V/50,60Hz	USA		Q4760X02031
DDP92	200 - 240V/50,60Hz	Europe		Q4760605063
DDP184	200 - 240V/50,60Hz	USA	G152-17	Q4860X02010
DDP184	200 - 240V/50,60Hz	Europe	G152-27	Q4860X05038

Model: DDP92		Date: 25-Jul-06	No.: MG150021
Modified Article: Exterior 2		Prepared by: Y.Minakawa	
From: 2nd Tech. Support Sec. Service Support Dept.			
Reason for Modification:	<input type="checkbox"/> Parts catalog correction <input type="checkbox"/> Vendor change <input type="checkbox"/> Other <input type="checkbox"/> To facilitate assembly <input checked="" type="checkbox"/> To improve reliability <input type="checkbox"/> To meet standards () <input type="checkbox"/> Part standardization <input type="checkbox"/> Product Safety		

Old part number	New part number	Description	Q'ty	Int	Page	Index	Note
-	G1502052	FG Guide Plate	1	-	9	64	

RoHS Parts Catalog:

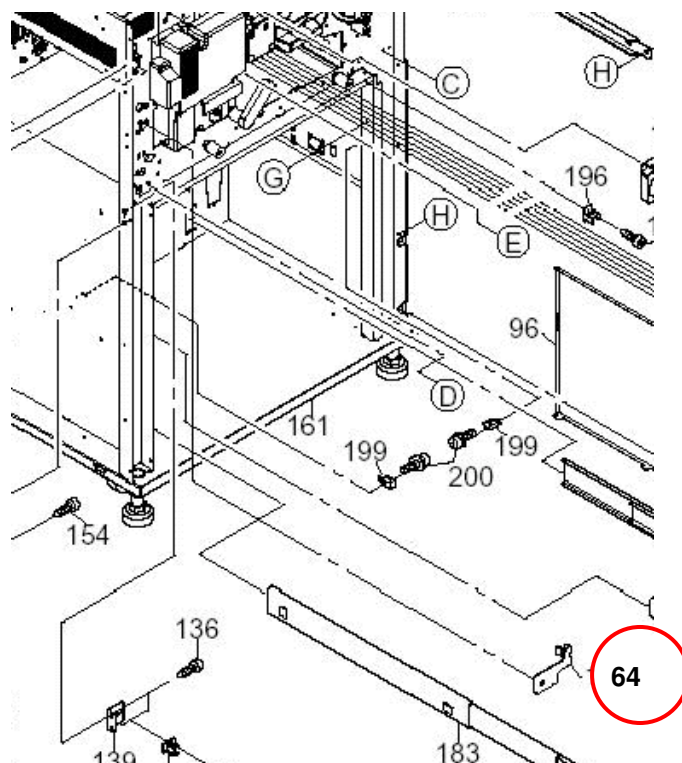
Old part number	New part number	Description	Q'ty	Int	Page	Index	Note
-	G1502052	FG Guide Plate	1	-	11	64	

Change: The part in the table was added to the Mecha Frame Ass'y.

Reason: To ensure that the Flip Gate Assembly is not damaged when the Fuser Unit is inserted in the printer.

Note: This can happen if the exit guide of the fuser unit is not closed when the Fuser Unit is inserted into the printer.

Pg. 8(10)



RCL (Japan) Production

MODEL NAME	V/Hz	DESTINATION	CODE	SERIAL NO.
DDP92	200 - 240V/50,60Hz	USA	G151-17	Q4760702XXX
DDP92	200 - 240V/50,60Hz	Europe	G151-27	Q4760705XXX

Model: DDP70		Date: 25-Jul-06	No.: MG150022
Modified Article: Exterior 2		Prepared by: Y.Minakawa	
From: 2nd Tech. Support Sec. Service Support Dept.			
Reason for Modification:	<input type="checkbox"/> Parts catalog correction <input type="checkbox"/> Vendor change <input type="checkbox"/> Other <input type="checkbox"/> To facilitate assembly <input checked="" type="checkbox"/> To improve reliability <input type="checkbox"/> To meet standards () <input type="checkbox"/> Part standardization <input type="checkbox"/> Product Safety		

Old part number	New part number	Description	Q'ty	Int	Page	Index	Note
-	G1502052	FG Guide Plate	1	-	9	65	

RoHS Parts Catalog:

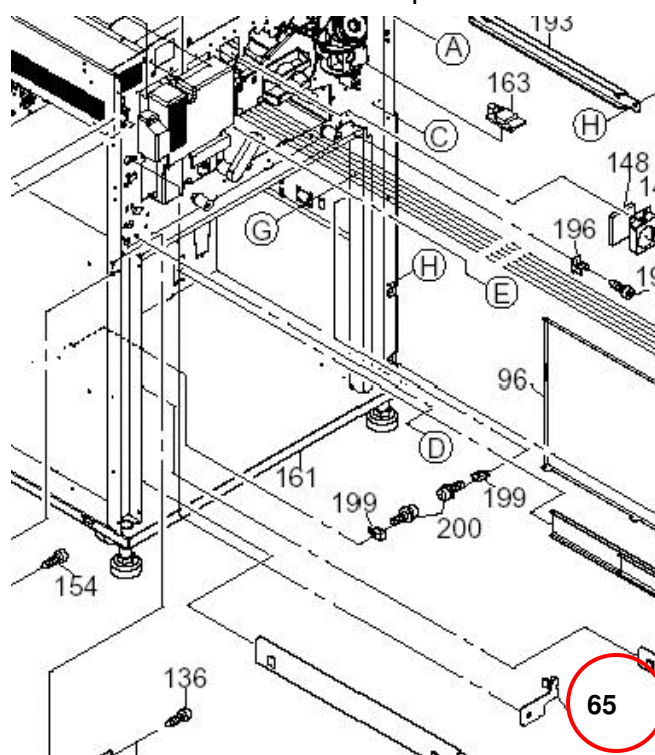
Old part number	New part number	Description	Q'ty	Int	Page	Index	Note
-	G1502052	FG Guide Plate	1	-	9	65	

Change: The part in the table was added to the Mecha Frame Ass'y.

Reason: To ensure that the Flip Gate Assembly is not damaged when the Fuser Unit is inserted in the printer.

Note: This can happen if the exit guide of the fuser unit is not closed when the Fuser Unit is inserted into the printer.

Pg. 8



RCL (Japan) Production

MODEL NAME	V/Hz	DESTINATION	CODE	SERIAL NO.
DDP70	200 - 240V/50,60Hz	USA	G150-17	Q4660702XXX
DDP70	200 - 240V/50,60Hz	Europe	G150-27	Q4660705XXX

Model: DDP184		Date: 25-Jul-06	No.: MG150023
Modified Article: Final Ass'y 2 and Final Ass'y 4		Prepared by: Y.Minakawa	
From: 2nd Tech. Support Sec. Service Support Dept.			
Reason for Modification:	<input type="checkbox"/> Parts catalog correction <input type="checkbox"/> Vendor change <input type="checkbox"/> Other <input type="checkbox"/> To facilitate assembly <input checked="" type="checkbox"/> To improve reliability <input type="checkbox"/> To meet standards () <input type="checkbox"/> Part standardization <input type="checkbox"/> Product Safety		

Old part number	New part number	Description	Q'ty	Int	Page	Index	Note
-	G1502052	FG Guide Plate	1	-	11	65	
			1	-	15	162	

RoHS Parts Catalog:

Old part number	New part number	Description	Q'ty	Int	Page	Index	Note
-	G1502052	FG Guide Plate	1	-	11	65	
			1	-	17	162	

Change: The part in the table was added to the Mecha Frame Ass'y.

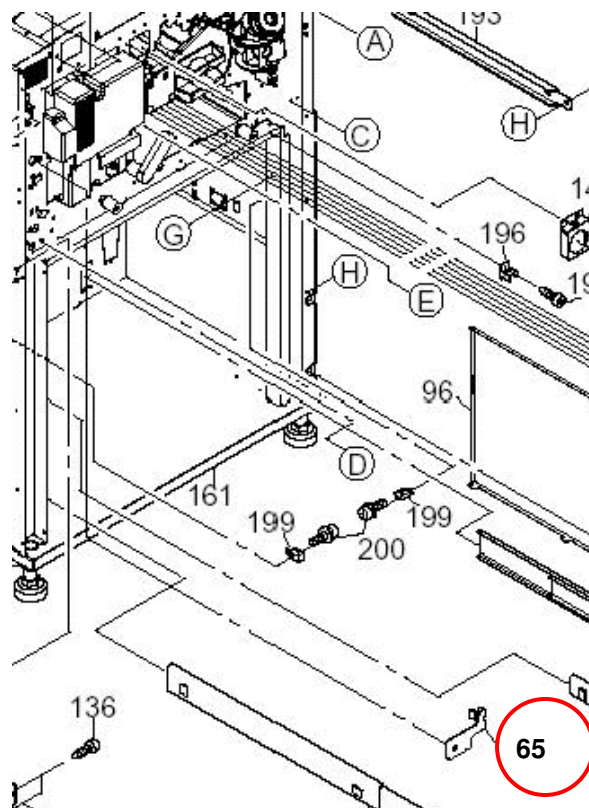
Reason: To ensure that the Flip Gate Assembly is not damaged when the Fuser Unit is inserted in the printer.

Note: This can happen if the exit guide of the fuser unit is not closed when the Fuser Unit is inserted into the printer.

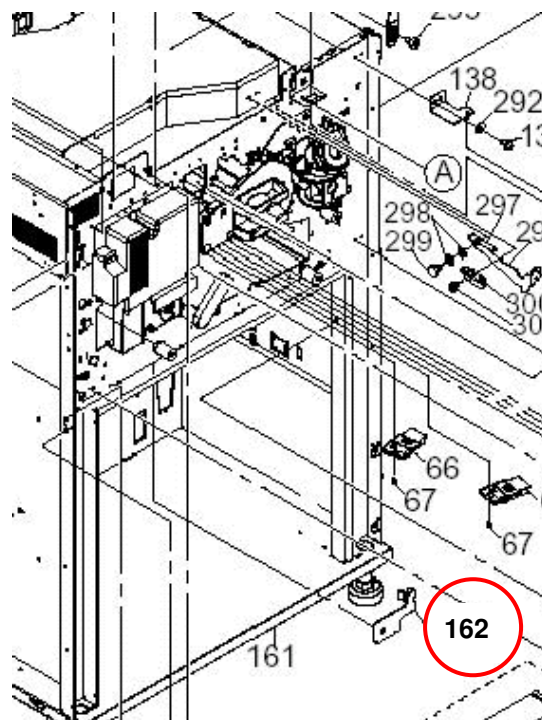
RCL (Japan) Production

MODEL NAME	V/Hz	DESTINATION	CODE	SERIAL NO.
DDP184	200 - 240V/50,60Hz	USA	G152-17	Q4860702XXX
DDP184	200 - 240V/50,60Hz	Europe	G152-27	Q4860705XXX

Pg. 10



Pg. 14(16)



Model: Standard Finisher DDP92/184(FS108H)		Date: 8-Aug-06	No.: MG150024
Modified Article: RoHS Directive		Prepared by: Y.Minakawa	
From: 2nd Tech. Support Sec. Service Support Dept.			
Reason for Modification:	<input type="checkbox"/> Parts catalog correction <input type="checkbox"/> Vendor change <input checked="" type="checkbox"/> Other <input type="checkbox"/> To facilitate assembly <input type="checkbox"/> To improve reliability <input type="checkbox"/> To meet standards <input type="checkbox"/> Part standardization <input type="checkbox"/> Product Safety ()		

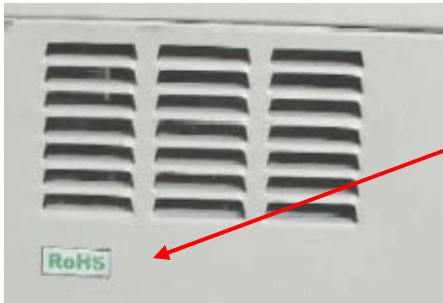
Change: The materials of the following parts were changed.

Reason: To comply with the RoHS Directive.

Old part number	New part number	Description	Q'ty	Int	Page	Index	Note
G8501058	G8508058	Photo Sensor	1	X/X	5	18	
			1		7	32	
			1		15	3	
			1		21	14	
			1		25	15	
			2		27	9	
			1		33	15	
			1		37	3	
			1		39	25	
			1		45	3	
			1		47	3	
G8501070	G8508070	Photo Sensor	2	X/X	3	14	
			2		7	5	
			1		11	11	
			1		17	24	
			1		27	21	
			1		43	7	
			1		45	7	
G8501188	G8508188	Detecting Sensor	1	X/X	11	9	
G8501306	G8508306	Paper Exit Opening Unit	1	X/X	17	2	
G8501357	G8508357	Sensor Cover Ass'y	1	X/X	17	25	
			1		27	20	
G8581078	G8588078	Paper Exit Sensor Ass'y	1	X/X	7	30	
G8581082	G8588082	FS-108H Package	1	X/X	3	31	
G8581084	G8588084	Rom Ass'y	1	X/X	3	17	
G8581198	G8588198	Conveyance Motor - DC39W	1	X/X	21	1	
G8581202	G8588202	FNS Wiring	1	X/X	51	1	
G8581203	G8588203	Fns Wiring	2	X/X	7	31	
			1		51	2	
G8581204	G8588204	FNS Wiring	1	X/X	51	3	
G8581207	G8588207	FNS Wiring	1		53	3	
G8581208	G8588208	Fns Wiring	1	X/X	27	5	
			1		53	4	
G8581209	G8588209	FNS Wiring	1	XX	53	5	
G8581424	G8585424	Paper Exit Roller Motor	1	XX	19	8	
G8581444	G8588444	Photo Sensor	1	XX	9	10	

Model: Standard Finisher DDP92/184(FS108H)	Date: 8-Aug-06	No.: MG150024
--	----------------	---------------

Note: The “RoHS” label shown below was added to the side cover of RoHS compliant finishers.



Model: DDP184		Date: 21-Aug-06	No.: MG150025
Modified Article: Fuser Unit		Prepared by: Y.Minakawa	
From: 2nd Tech. Support Sec. Service Support Dept.			
Reason for Modification:	<input type="checkbox"/> Parts catalog correction <input type="checkbox"/> To facilitate assembly <input type="checkbox"/> Part standardization	<input type="checkbox"/> Vendor change <input checked="" type="checkbox"/> To improve reliability <input type="checkbox"/> Product Safety	<input type="checkbox"/> Other <input type="checkbox"/> To meet standards ()

Old part number	New part number	Description	Q'ty	Int	Page	Index	Note
G1525131	G1521356	Fuser Unit –Rear Engine	1	O/O	69	1	

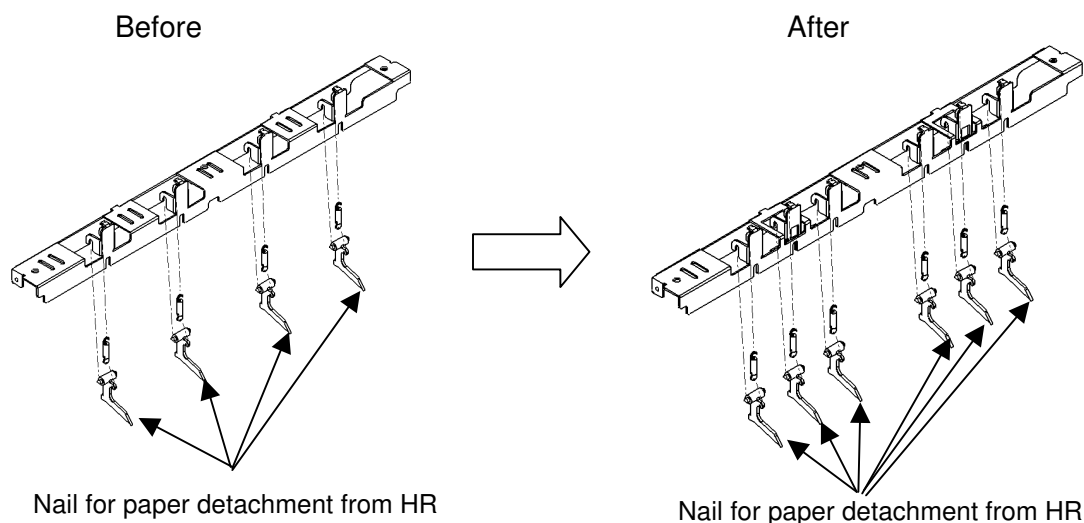
For RoHS

Old part number	New part number	Description	Q'ty	Int	Page	Index	Note
G1525131	G1521356	Fuser Unit –Rear Engine	1	O/O	69	1	

Change: Two more detachment nails were added to the fuser unit of the rear engine.

Reason:

- 1) To improve the paper detachment from the Heat Roller
- 2) To ensure fuser jams do not occur in duplex mode with legal paper.



RCL (Japan) Production

MODEL NAME	V/Hz	DESTINATION	CODE	SERIAL NO.
DDP184	200 - 240V/50,60Hz	USA	G152-17	Q4860702012
DDP184	200 - 240V/50,60Hz	Europe	G152-27	Q48XXX05038

Model: DDP184		Date: 3-Oct-06	No.: MG150026
Modified Article: Controller Board		Prepared by: Y.Minakawa	
From: 2nd Tech. Support Sec. Service Support Dept.			
Reason for Modification:	<input type="checkbox"/> Parts catalog correction <input type="checkbox"/> Vendor change <input type="checkbox"/> Other <input type="checkbox"/> To facilitate assembly <input checked="" type="checkbox"/> To improve reliability <input type="checkbox"/> To meet standards <input type="checkbox"/> Part standardization <input type="checkbox"/> Product Safety ()		

Change: The FPGA ROM on the Controller Board was changed.

Reason: To ensure that the reception processing section of the FPGA ROM works correctly.

Note: For details, see RTB # RG150036.

Old part number	New part number	Description	Q'ty	Int	Page	Index	Note
G1521186	G1521238	Controller Board(184)(Front)	1	X/O	9	88	For non-RoHS machine
G1521187	G1521239	Controller Board(184)(Rear)	1	X/O	13	113	For non-RoHS machine

For RoHS Parts Catalog

Old part number	New part number	Description	Q'ty	Int	Page	Index	Note
G1521186	G1521238	Controller Board(184)(Front)	1	X/O	9	88	For non-RoHS machine
G1521187	G1521239	Controller Board(184)(Rear)	1	X/O	14	113	For non-RoHS machine

Reissued: 30-Nov-06

Model: DDP70		Date: 3-Oct-06	No.: MG150027a
Modified Article: Parts catalog correction		Prepared by: Y.Minakawa	
From: 2nd Tech. Support Sec. Service Support Dept.			
Reason for Modification:	<input checked="" type="checkbox"/> Parts catalog correction <input type="checkbox"/> To facilitate assembly <input type="checkbox"/> Part standardization	<input type="checkbox"/> Vendor change <input type="checkbox"/> To improve reliability <input type="checkbox"/> Product Safety	<input type="checkbox"/> Other <input type="checkbox"/> To meet standards ()

RTB Reissue

The parts in bold italics have been added.

Change: These parts were deleted.

Reason: They were listed in the Parts Catalog by mistake.

Part no.	Description	Q'ty	Pg	Index	Substitute part
G1501174	Mecha Frame Ass'y	1	9	43	-
G1501404	Controller Box Ass'y	1	7	86	-
G1501198	Ozone Chamber	1	7	3	G1501521
G1501232	Development Frame Ass'y	1	19	3	G1505183
G1501340	Bottom Plate Sub Ass'y	1		11	
G1501267	Magnet Roll (D30)	1		13	
G1501268	Magnet Roll (D30)	1		14	
G1501279	Magnet Roll FI (F)	2		17	
G1501774	BB Holder Mgr Ass'y	2		19	
G1501508	Doctor Blade	1		25	
G1501841	Doctor Holder D	2		26	
G1501749	Doctor Fix Plate (R)	1		28	
G1501826	Doctor Fix Plate (Rear)	1		29	
G1501612	Gate Ass'y	1	37	42	G1501246
G1501362	Lower Paper Guide	1		44	
G1501603	Chassis L	1		45	
G1501604	Chassis R	1		46	

For RoHS parts catalog

Part no.	Description	Q'ty	Page	Index	Replacement part
G1501174	Mecha Frame Ass'y	1	9	43	-
G1501404	Controller Box Ass'y	1	7	86	-
G1501198	Ozone Chamber	1	7	3	G1501521
G1501232	Development Frame Ass'y	1	17	3	G1505183
G1501340	Bottom Plate Sub Ass'y	1		11	
G1501267	Magnet Roll (D30)	1		13	
G1501268	Magnet Roll (D30)	1		14	
G1501279	Magnet Roll FI (F)	2		17	
G1501774	BB Holder Mgr Ass'y	2		19	
G1501508	Doctor Blade	1		25	
G1501841	Doctor Holder D	2		26	
G1501749	Doctor Fix Plate (R)	1		28	
G1501826	Doctor Fix Plate (Rear)	1		29	
G1501612	Gate Ass'y	1	35	42	G1501246
G1501362	Lower Paper Guide	1		44	
G1501603	Chassis L	1		45	
G1501604	Chassis R	1		46	

Model: DDP92		Date: 3-Oct-06	No.: MG150028
Modified Article: Parts catalog correction		Prepared by: Y.Minakawa	
From: 2nd Tech. Support Sec. Service Support Dept.			
Reason for Modification:	<input checked="" type="checkbox"/> Parts catalog correction <input type="checkbox"/> Vendor change <input type="checkbox"/> Other <input type="checkbox"/> To facilitate assembly <input type="checkbox"/> To improve reliability <input type="checkbox"/> To meet standards <input type="checkbox"/> Part standardization <input type="checkbox"/> Product Safety ()		

Change: These parts were deleted.

Reason: They were listed in the Parts Catalog by mistake.

Part no.	Description	Q'ty	Page	Index	Substitute part
G1501198	Ozone Chamber	1	7	3	G1511046
G1511040	C/T Box:Ass'y	1		89	-
G1511092	Cover:Ass'y	1		63	-
G1511091	Cover:Ass'y	1		63	-
G1511011	Frame:Ass'y	1	19	3	G1515006
G1501340	Bottom Plate Sub Ass'y	1		11	
G1501267	Magnet Roll (D30)	1		15	
G1501268	Magnet Roll (D30)	1		16	
G1501279	Magnet Roll FI (F)	2		17	
G1501774	BB Holder Mgr Ass'y	2		19	
G1501508	Doctor Blade	1		25	
G1501841	Doctor Holder D	1		26	
G1501749	Doctor Fix Plate (R)	1		28	
G1501826	Doctor Fix Plate (Rear)	1		29	
G1501612	Gate Ass'y	1	37	42	G1501246
G1501362	Rubber Roller Shaft	1		43	
G1501603	Chassis L	1		45	
G1501604	Chassis R	1		46	

For RoHS parts catalog

Part no.	Description	Q'ty	Page	Index	Substitute part
G1501198	Ozone Chamber	1	7	3	G1511046
G1511091	Cover:Ass'y	1		63	-
G1511092	Cover:Ass'y	1	8	63	-
G1511040	C/T Box:Ass'y	1		89	-
G1511011	Frame:Ass'y	1	19	3	G1515006
G1501340	Bottom Plate Sub Ass'y	1		11	
G1501267	Magnet Roll (D30)	1		15	
G1501268	Magnet Roll (D30)	1		16	
G1501279	Magnet Roll FI (F)	2		17	
G1501774	BB Holder Mgr Ass'y	2		19	
G1501508	Doctor Blade	1		25	
G1501841	Doctor Holder D	1		26	
G1501749	Doctor Fix Plate (R)	1		28	
G1501826	Doctor Fix Plate (Rear)	1		29	
G1501612	Gate Ass'y	1	37	42	G1501246
G1501362	Rubber Roller Shaft	1		44	
G1501603	Chassis L	1		45	
G1501604	Chassis R	1		46	

Reissued: 30-Nov-06

Model: DDP184		Date: 3-Oct-06	No.: MG150029a
Modified Article: Parts catalog correction		Prepared by: Y.Minakawa	
From: 2nd Tech. Support Sec. Service Support Dept.			
Reason for Modification:	<input checked="" type="checkbox"/> Parts catalog correction <input type="checkbox"/> To facilitate assembly <input type="checkbox"/> Part standardization	<input type="checkbox"/> Vendor change <input type="checkbox"/> To improve reliability <input type="checkbox"/> Product Safety	<input type="checkbox"/> Other <input type="checkbox"/> To meet standards ()

RTB Reissue

The part in bold italics has been added.

Change: These parts were deleted.

Reason: They were listed in the Parts Catalog by mistake.

Part number	Description	Q'ty	Page	Index	Substitute part
<i>G1501404</i>	<i>Controller Box Assy</i>	<i>1</i>	<i>9</i>	<i>89</i>	-
		<i>1</i>	<i>14</i>	<i>114</i>	-
G1501198	Ozone Chamber	1	9	3	G1511046
G1501198	Ozone Chamber	1	13	3	
G1521216	COVER:ASS'Y	1	9	28	-
G1521230	FAN:ASS'Y	1	11	44	-
G1521216	COVER:ASS'Y	1	13	28	-
G1521025	FRAME:ASS'Y	1	15	42	-
G1511011	FRAME:ASS'Y	1		3	
G1501340	Bottom Plate Sub Ass'y	1		11	
G1501267	Magnet Roll (D30)	1		15	
G1501268	Magnet Roll (D30)	1		16	
G1501279	Magnet Roll FI (F)	2	27	17	G1515006
G1501774	BB Holder Mgr Ass'y	2		19	
G1501508	Doctor Blade	1		25	
G1501841	Doctor Holder D	2		26	
G1501749	Doctor Fix Plate (R)	1		28	
G1501826	Doctor Fix Plate (Rear)	1		29	
G1501340	Bottom Plate Sub Ass'y	1		11	
G1501267	Magnet Roll (D30)	1		15	
G1501268	Magnet Roll (D30)	1		16	
G1501279	Magnet Roll FI (F)	2	29	17	G1525028
G1501774	BB Holder Mgr Ass'y	2		19	
G1501508	Doctor Blade	1		25	
G1501841	Doctor Holder D	2		26	
G1501749	Doctor Fix Plate (R)	1		28	
G1501826	Doctor Fix Plate (Rear)	1		29	
G1501612	Gate Ass'y	1		42	
G1501362	Lower Paper Guide	1	51	44	G1501246
G1501603	Chassis L	1		45	
G1501604	Chassis R	1		46	
G1521035	Frame:Ass'Y	1		1	-
G1501362	Lower Paper Guide	1		77	
G1501612	Gate Ass'y	1	61	79	G1521044
G1501603	Chassis L	1		84	
G1501604	Chassis R	1		85	
G1521104	CP PK Ass'y (R)	1	63	13	-

Reissued: 30-Nov-06

Model: DDP184	Date: 3-Oct-06	No.: MG150029a
---------------	----------------	----------------

For RoHS parts catalog

Part number	Description	Q'ty	Page	Index	Replacement part
G1501404	Controller Box Assy	1	9	89	-
		1	14	114	-
G1501198	Ozone Chamber	1	9	3	G1511046
G1501198	Ozone Chamber	1	13	3	
G1521216	COVER:ASS'Y	1	9	28	-
G1521230	FAN:ASS'Y	1	11	44	-
G1521216	COVER:ASS'Y	1	13	28	-
G1521025	FRAME:ASS'Y	1	17	42	-
G1511011	FRAME:ASS'Y	1		3	
G1501340	Bottom Plate Sub Ass'y	1		11	
G1501267	Magnet Roll (D30)	1		15	
G1501268	Magnet Roll (D30)	1		16	
G1501279	Magnet Roll FI (F)	2	27	17	G1515006
G1501774	BB Holder Mgr Ass'y	2		19	
G1501508	Doctor Blade	1		25	
G1501841	Doctor Holder D	2		26	
G1501749	Doctor Fix Plate (R)	1		28	
G1501826	Doctor Fix Plate (Rear)	1		29	
G1501340	Bottom Plate Sub Ass'y	1		11	
G1501267	Magnet Roll (D30)	1		15	
G1501268	Magnet Roll (D30)	1		16	
G1501279	Magnet Roll FI (F)	2	29	17	G1525028
G1501774	BB Holder Mgr Ass'y	2		19	
G1501508	Doctor Blade	1		25	
G1501841	Doctor Holder D	2		26	
G1501749	Doctor Fix Plate (R)	1		28	
G1501826	Doctor Fix Plate (Rear)	1		29	
G1501612	Gate Ass'y	1		42	
G1501362	Lower Paper Guide	1	51	44	G1501246
G1501603	Chassis L	1		45	
G1501604	Chassis R	1		46	
G1521035	Frame:Ass'Y	1		1	-
G1501362	Lower Paper Guide	1		77	
G1501612	Gate Ass'y	1	61	49	G1521044
G1501603	Chassis L	1		84	
G1501604	Chassis R	1		85	
G1521104	CP PK Ass'y (R)	1	63	13	-

Model: DDP70		Date: 17-Oct-06	No.: MG150030
Modified Article: Parts catalog correction		Prepared by: Y.Minakawa	
From: 2nd Tech. Support Sec. Service Support Dept.			
Reason for Modification:	<input checked="" type="checkbox"/> Parts catalog correction <input type="checkbox"/> Vendor change <input type="checkbox"/> Other <input type="checkbox"/> To facilitate assembly <input type="checkbox"/> To improve reliability <input type="checkbox"/> To meet standards <input type="checkbox"/> Part standardization <input type="checkbox"/> Product Safety ()		

Change/Reason: The descriptions for these parts were corrected.

Part Number	Incorrect Description	Correct Description	Q'ty	Page	Index	Note
G1501228	TH Unit Ass'y	Paper Feed Unit	1	31	3	



RoHS parts catalog

Part Number	Incorrect Description	Correct Description	Q'ty	Page	Index	Note
G1501228	TH Unit Ass'y	Paper Feed Unit	1	31	3	
G1505228	TH Unit Ass'y	Paper Feed Unit	1	31	3	

Model: DDP70		Date: 10-Nov-06	No.: MG150031
Modified Article: Parts Catalog Correction		Prepared by: Y.Minakawa	
From: 2nd Tech. Support Sec. Service Support Dept.			
Reason for Modification:	<input checked="" type="checkbox"/> Parts catalog correction	<input type="checkbox"/> Vendor change	<input type="checkbox"/> Other
	<input type="checkbox"/> To facilitate assembly	<input type="checkbox"/> To improve reliability	<input type="checkbox"/> To meet standards
	<input type="checkbox"/> Part standardization	<input type="checkbox"/> Product Safety	()

1. Please note the following information. The P/N for these parts were not changed.

Part Number	Description	Q'ty	Int	Page	Index
G1501668	HDD (70)Ass'y	1	-	7	67
G1501876	HDD (70)Ass'y	1	-	7	67

For RoHS Parts catalog

Part Number	Description	Q'ty	Int	Page	Index
G1505668	HDD (70)Ass'y(PSPCL)	1		7	67
G1501668	HDD (70)Ass'y	1	-	7	67
G1505876	HDD (70)Ass'y(PCL)	1		7	67
G1501876	HDD (70)Ass'y	1	-	7	67

Note:

- G1501876 and G1505876 supports **PCL only**.
- G1501668 and G1505668 supports **PCL and PS**.
 - To use this part, you need to install the Adobe Postscript 3 Upgrade Kit(G86900).

2. The description for this part was corrected.

For RoHS Parts catalog

part number	Incorrect Description	Correct Description	Q'ty	Page	Index
G1508375	Power Transformer Ass'y	Control Board(70)	1	7	87

Model: DDP184		Date: 15-Nov-06	No.: MG150032
Modified Article: Relay Unit		Prepared by: Y.Minakawa	
From: 2nd Tech. Support Sec. Service Support Dept.			
Reason for Modification:	<input type="checkbox"/> Parts catalog correction <input type="checkbox"/> To facilitate assembly <input type="checkbox"/> Part standardization	<input type="checkbox"/> Vendor change <input checked="" type="checkbox"/> To improve reliability <input type="checkbox"/> Product Safety	<input type="checkbox"/> Other <input type="checkbox"/> To meet standards ()

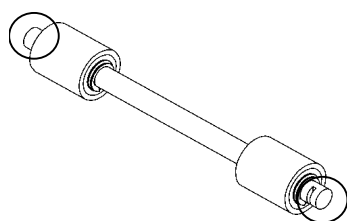
Old part number	New part number	Description	Q'ty	Int	Page	Index	Note
G1505431	G1521359	Pressure Roller Ass'y	1	O/O	61	14	
			1		61	29	
			3		61	36	
			2		61	51	
			1		61	64	

For RoHS parts catalog

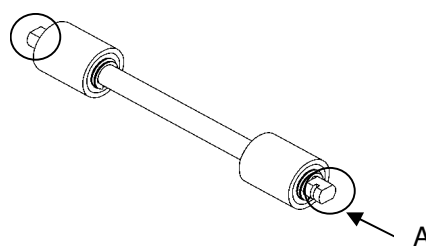
Old part number	New part number	Description	Q'ty	Int	Page	Index	Note
G1505431	G1521359	Pressure Roller Ass'y	1	O/O	61	14	
			1		61	29	
			3		61	36	
			2		61	51	
			1		61	64	

Change: The shape of Pressure Roller Ass'y in the Relay Unit was changed.

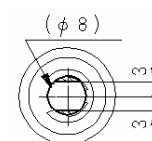
Reason: To ensure that the shaft of the Pressure Roller Ass'y does not touch the Paper Guide.



Before Change



After Change



view from A

RCL (Japan) Production

MODEL NAME	V/Hz	DESTINATION	CODE	SERIAL NO.
DDP184	200 - 240V/50,60Hz	USA	G152-17	Q4861202XXX
DDP184	200 - 240V/50,60Hz	Europe	G152-27	Q4861205XXX

Reissued: 30-Nov-06

Model: DDP92		Date: 3-Oct-06	No.: MG150028a
Modified Article: Parts catalog correction		Prepared by: Y.Minakawa	
From: 2nd Tech. Support Sec. Service Support Dept.			
Reason for Modification:	<input checked="" type="checkbox"/> Parts catalog correction <input type="checkbox"/> To facilitate assembly <input type="checkbox"/> Part standardization	<input type="checkbox"/> Vendor change <input type="checkbox"/> To improve reliability <input type="checkbox"/> Product Safety	<input type="checkbox"/> Other <input type="checkbox"/> To meet standards ()

RTB Reissue

The part in bold italics has been added.

Change: These parts were deleted.

Reason: They were listed in the Parts Catalog by mistake.

Part number	Description	Q'ty	Page	Index	Substitute part
G1501174	Mecha Frame Ass'y	1	9	42	-
G1501198	Ozone Chamber	1	7	3	G1511046
G1511040	C/T Box:Ass'y	1		89	-
G1511092	Cover:Ass'y	1		63	-
G1511091	Cover:Ass'y	1		63	-
G1511011	Frame:Ass'y	1	19	3	G1515006
G1501340	Bottom Plate Sub Ass'y	1		11	
G1501267	Magnet Roll (D30)	1		15	
G1501268	Magnet Roll (D30)	1		16	
G1501279	Magnet Roll FI (F)	2		17	
G1501774	BB Holder Mgr Ass'y	2		19	
G1501508	Doctor Blade	1		25	
G1501841	Doctor Holder D	1		26	
G1501749	Doctor Fix Plate (R)	1		28	
G1501826	Doctor Fix Plate (Rear)	1		29	
G1501612	Gate Ass'y	1	37	42	G1501246
G1501362	Rubber Roller Shaft	1		43	
G1501603	Chassis L	1		45	
G1501604	Chassis R	1		46	

For RoHS parts catalog

Part number	Description	Q'ty	Page	Index	Substitute part
G1501174	Mecha Frame Ass'y	1	11	42	-
G1501198	Ozone Chamber	1	7	3	G1511046
G1511091	Cover:Ass'y	1		63	-
G1511092	Cover:Ass'y	1	8	63	-
G1511040	C/T Box:Ass'y	1		89	-
G1511011	Frame:Ass'y	1	19	3	G1515006
G1501340	Bottom Plate Sub Ass'y	1		11	
G1501267	Magnet Roll (D30)	1		15	
G1501268	Magnet Roll (D30)	1		16	
G1501279	Magnet Roll FI (F)	2		17	
G1501774	BB Holder Mgr Ass'y	2		19	
G1501508	Doctor Blade	1		25	
G1501841	Doctor Holder D	1		26	

Reissued: 30-Nov-06

Model: DDP92			Date: 3-Oct-06		No.: MG150028a
G1501749	Doctor Fix Plate (R)	1	37	28	G1501246
G1501826	Doctor Fix Plate (Rear)	1		29	
G1501612	Gate Ass'y	1		42	
G1501362	Rubber Roller Shaft	1		44	
G1501603	Chassis L	1		45	
G1501604	Chassis R	1		46	

Model: DDP-Container Stacker-		Date: 30-Nov-06	No.: MG150033
Modified Article: Parts catalog correction		Prepared by: Y.Minakawa	
From: 2nd Tech. Support Sec. Service Support Dept.			
Reason for Modification:	<input checked="" type="checkbox"/> Parts catalog correction <input type="checkbox"/> To facilitate assembly <input type="checkbox"/> Part standardization	<input type="checkbox"/> Vendor change <input type="checkbox"/> To improve reliability <input type="checkbox"/> Product Safety	<input type="checkbox"/> Other <input type="checkbox"/> To meet standards ()

Change: These parts were deleted.

Reason: They were listed in the Parts Catalog by mistake.

Part number	Description	Q'ty	Page	Index	Substitute part
G8511030	Frame Ass'y	1	7	1	-
G8511068	Lift Frame Ass'y	2	17	3	G8511054 G8518054
G8511082	Container Fork Ass'y	2	17	4	G8511054 G8518054

For RoHS parts catalog

Part number	Description	Q'ty	Page	Index	Substitute part
G8511030	Frame Ass'y	1	7	1	-
G8511068	Lift Frame Ass'y	2	17	3	G8511054 G8518054
G8511082	Container Fork Ass'y	2	17	4	G8511054 G8518054

Model: DDP184		Date: 6-Dec-06	No.: MG150034
Modified Article: Development Unit Ass'y		Prepared by: Y. Minakawa	
From: 2nd Tech. Support Sec. Service Support Dept.			
Reason for Modification:	<input type="checkbox"/> Parts catalog correction <input type="checkbox"/> To facilitate assembly <input type="checkbox"/> Part standardization	<input type="checkbox"/> Vendor change <input type="checkbox"/> To improve reliability <input type="checkbox"/> Product Safety	<input checked="" type="checkbox"/> Other <input type="checkbox"/> To meet standards ()

Change: The part in the table was added for the Color kit DDP184 Reflex Blue.

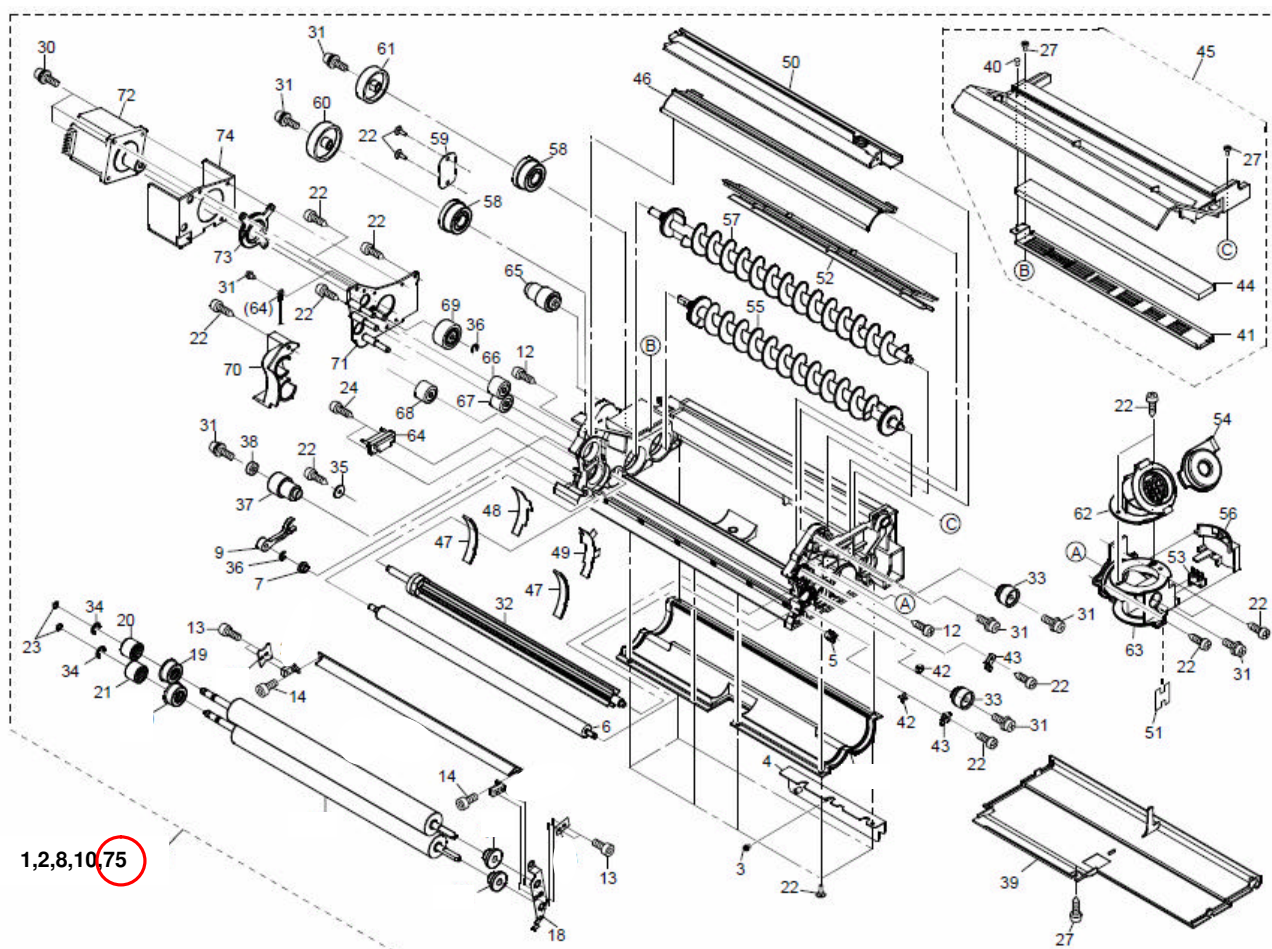
Reason: To facilitate servicing in the field.

Old part number	New part number	Description	Q'ty	Int	Page	Index	Note
-	G1521368	Development Unit:Ass'y (Reflex Blue)	1	-	29	75	New Index

For RoHS Parts Catalog

Old part number	New part number	Description	Q'ty	Int	Page	Index	Note
-	G1502052	Development Unit:Ass'y (Reflex Blue)	1	-	29	75	New Index

Pg. 28



Model: DDP184		Date: 8-Feb-07	No.: MG150035
Modified Article: SB Gate Ass'y		Prepared by: Y.Minakawa	
From: 2nd Tech. Support Sec. Service Support Dept.			
Reason for Modification:	<input type="checkbox"/> Parts catalog correction <input type="checkbox"/> Vendor change <input type="checkbox"/> Other <input type="checkbox"/> To facilitate assembly <input checked="" type="checkbox"/> To improve reliability <input type="checkbox"/> To meet standards <input type="checkbox"/> Part standardization <input type="checkbox"/> Product Safety ()		

Old part number	New part number	Description	Q'ty	Int	Page	Index	Note
G1505322	G1521345	SB Gate Ass'y	1	O/O	73	30	

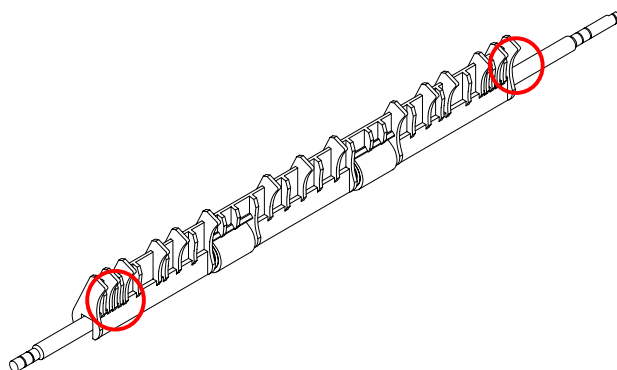
For RoHS parts catalog

Old part number	New part number	Description	Q'ty	Int	Page	Index	Note
G1505322	G1521345	SB Gate Ass'y	1	O/O	73	30	

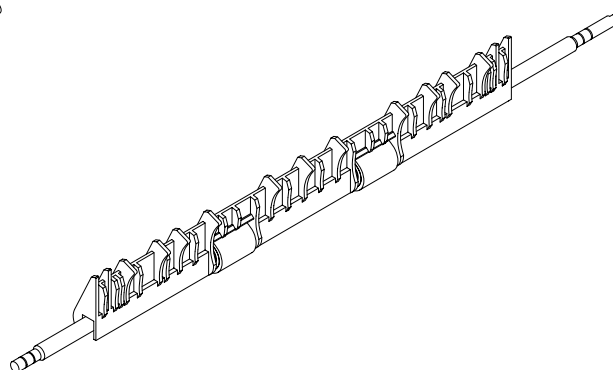
Change: Four ribs were removed from the SB Gate Ass'y (rear engine).

Reason: To further ensure paper jams do not occur.

Note: Sometimes, these four ribs can wear out and cause paper jams.



Old part



New part

RCL (Japan) Production

MODEL NAME	V/Hz	DESTINATION	CODE	SERIAL NO.
DDP184	200 - 240V/50,60Hz	USA	G152-17	Q4860602XXX
DDP184	200 - 240V/50,60Hz	Europe	G152-27	Q4860605XXX

Reissued: 5-Mar-07

Model: DDP184	Date: 7-Jun-06	No.: MG150012a
---------------	----------------	----------------

MB Reissue

This MB was corrected (***bold italics***).

The table for RoHS parts catalog was added.

Modified Article: RoHS Directive		Prepared by: Y.Minakawa	
From: 2nd Tech. Support Sec. Service Support Dept.			
Reason for	<input type="checkbox"/> Parts catalog correction	<input type="checkbox"/> Vendor change	<input checked="" type="checkbox"/> Other
Modification:	<input type="checkbox"/> To facilitate assembly	<input type="checkbox"/> To improve reliability	<input type="checkbox"/> To meet standards
	<input type="checkbox"/> Part standardization	<input type="checkbox"/> Product Safety	()

Change: The materials of the following parts were changed.

Reason: To comply with the RoHS Directive.

Old part number	New part number	Description	Q'ty	Int	Page	Index	Note
G1501158	G1502040	Screw M3x25→ Screw M3x30	X/X	4	11	4	
				4	15	4	
				6	57	27	
G1501295	G1508295	Geared Motor 2000 - DC3W	X/X	1	57	36	
G1501312	G1508312	Geared Motor 500 - DC1W	X/X	2	57	26	
G1501671	G1508671	Operation Panel:Ass'y	X/X	1	9	86	
				1	13	111	
G1501677	G1508677	Sdram(1) DIMM Ass'y	X/X	2	9	87	
				2	13	112	
G1511009	G1518009	Drive:Ass'y	X/X	1	35	1	
G1511023	G1518023	DC Motor	X/X	1	35	4	
				1	67	4	
G1521037	G1528037	Drum Drive Sub-Unit	X/X	1	67	1	
G1521074	G1528074	Operation Panel:Ass'y	X/X	1	9	113	
G1521078	G1528078	OPTICAL UNIT:ASS'Y		1	9	90	
		→ Control Board -Front Engine	X/X				
G1521079	G1528079	OPTICAL UNIT:ASS'Y		1	13	116	
		→ Control Board 621 -Rear Engine	X/X				
G1521178	G1528178	Hdd	X/X	1	65	5	
G1521179	G1528179	Lan Adapter	X/X	2	65	6	
G1521180	G1528180	Power Supply Unit	X/X	1	65	7	
G1521181	G1528181	Operation Panel					
		→ Switch Panel	X/X	1	65	8	
G1521182	G1528182	Cable					
		→ Printer Cable	X/X	2	65	9	
G1521186	G1528186	DEVELOPMENT SECTION		1	9	88	
		→ CE Board(184)Ass'y(Front)(R)	X/X				

Reissued: 5-Mar-07

Model: DDP184			Date: 7-Jun-06		No.: MG150012a		
G1521187	G1528187	TOOL BAG:ASS'Y → Controller Board 184(Rear)(R)	X/X	1	13	113	
G1521193	G1528176	Main Control Board –Kit → Main Control Board	X/X	1	65	3	
G1521194	G1528177	Ram Board	X/X	1	65	2	
G1521343	G1528191	Control Unit	X/X	1	65	1	

RCL (Japan) Production

MODEL NAME	V/Hz	DESTINATION	CODE	SERIAL NO.
DDP184	200 - 240V/50,60Hz	USA	G152-17	Q4860X02010
DDP184	200 - 240V/50,60Hz	Europe	G152-27	Q4860405026

Change/Reason: The description for this part was corrected.
for RoHS parts catalog

Old part number	New part number	Description	Q'ty	Int	Page	Index	Note
G1521078	G1528078	OPTICAL UNIT:ASS'Y → Control Board -Front Engine	X/X	1	9	90	
G1521079	G1528079	OPTICAL UNIT:ASS'Y → Control Board 621 -Rear Engine	X/X	1	14	116	
G1521181	G1528181	Operation Panel → Switch Panel	X/X	1	65	8	
G1521182	G1528182	Cable → Printer Cable	X/X	2	65	9	
G1521186	G1528186	DEVELOPMENT SECTION → CE Board(184)Ass'y(Front)(R)	X/X	1	9	88	
G1521187	G1528187	TOOL BAG:ASS'Y → Controller Board 184(Rear)(R)	X/X	1	14	113	
G1521193	G1528176	Main Control Board –Kit → Main Control Board	X/X	1	65	3	

Reissued: 29-Jun-07

Model: DDP70	Date: 18-Apr-07	No.: MG150036a
--------------	-----------------	----------------

RTB Reissue: The items in ***bold italics*** have been corrected.

Modified Article: Development Unit		Prepared by: Y.Minakawa						
From: QA/Service Planning Dept.								
Reason for Modification:	<input type="checkbox"/> Parts catalog correction <input type="checkbox"/> Vendor change <input type="checkbox"/> Other <input type="checkbox"/> To facilitate assembly <input checked="" type="checkbox"/> To improve reliability <input type="checkbox"/> To meet standards <input type="checkbox"/> Part standardization <input type="checkbox"/> Product Safety ()							
	Old part number	New part number	Description	Q'ty	Int	Page	Index	Note
	G1505183	G1502056	Development Unit Ass'y	1	<i>O/O</i>	19	2	

For RoHS parts catalog

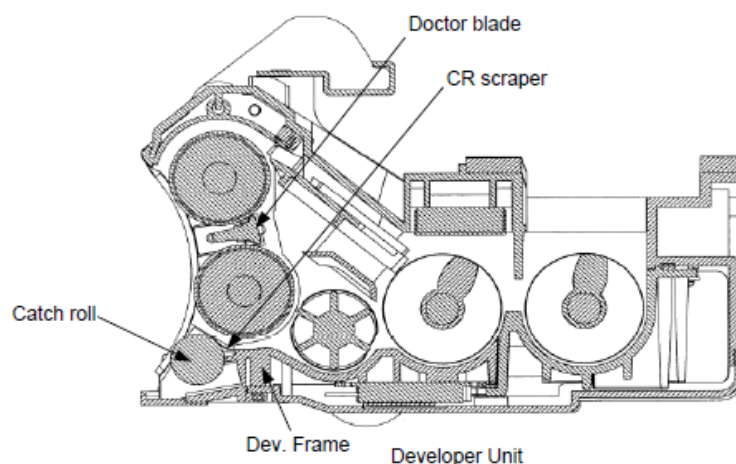
Old part number	New part number	Description	Q'ty	Int	Page	Index	Note
G1505183	G1502056	Development Unit Ass'y	1	<i>O/O</i>	17	2	

Change:

- The material of the doctor blade for the development unit was changed (SiC and Ni-P was added to the surface of the doctor blade).
- The double-sided tape was changed to a stronger type.

Reason:

- To increase the durability of the doctor blade and further ensure the developer mixture does not leak out from the development unit.
- To further ensure the CR Scraper and development unit frame are secured more strongly.


RCL (Japan) Production

MODEL NAME	V/Hz	DESTINATION	CODE	SERIAL NO.
DDP70	200 - 240V/50,60Hz	USA	G150-17	Q4670302XXX
DDP70	200 - 240V/50,60Hz	Europe	G150-27	Q4670305XXX

Reissued: 29-Jun-07

Model: DDP92	Date: 18-Apr-07	No.: MG150037a
--------------	-----------------	----------------

RTB Reissue: The items in ***bold italics*** have been corrected.

Modified Article: Development Unit		Prepared by: Y.Minakawa					
From: QA/Service Planning Dept.							
Reason for Modification:	<input type="checkbox"/> Parts catalog correction	<input type="checkbox"/> Vendor change	<input type="checkbox"/> Other				
	<input type="checkbox"/> To facilitate assembly	<input checked="" type="checkbox"/> To improve reliability	<input type="checkbox"/> To meet standards ()				
	<input type="checkbox"/> Part standardization	<input type="checkbox"/> Product Safety					

Old part number	New part number	Description	Q'ty	Int	Page	Index	Note
G1515006	G1511201	Developer Ass'y	1	<i>O/O</i>	19	1	

For RoHS parts catalog

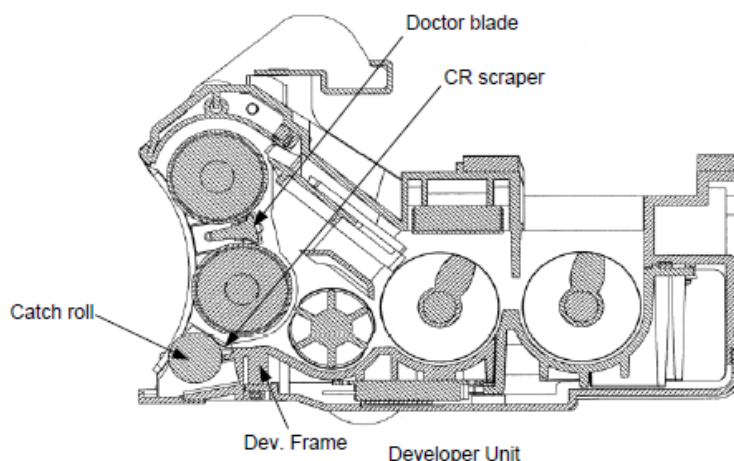
Old part number	New part number	Description	Q'ty	Int	Page	Index	Note
G1515006	G1511201	Development Unit Ass'y	1	<i>O/O</i>	19	1	

Change:

- The material of the doctor blade for the development unit was changed (SiC and Ni-P was added to the surface of the doctor blade).
- The double-sided tape was changed to a stronger type.

Reason:

- To increase the durability of the doctor blade and further ensure the developer mixture does not leak out from the development unit.
- To further ensure the CR Scraper and development unit frame are secured more strongly.


RCL (Japan) Production

MODEL NAME	V/Hz	DESTINATION	CODE	SERIAL NO.
DDP92	200 - 240V/50,60Hz	USA	G151-17	Q4770302XXX
DDP92	200 - 240V/50,60Hz	Europe	G151-27	Q4770305XXX

Reissued: 29-Jun-07

Model: DDP184	Date: 18-Apr-07	No.: MG150038a
---------------	-----------------	----------------

RTB Reissue

The items in ***bold italics*** have been corrected.

Modified Article: Development Unit		Prepared by: Y.Minakawa	
From: QA/Service Plannig Dept.			
Reason for Modification:	<input type="checkbox"/> Parts catalog correction <input type="checkbox"/> Vendor change <input type="checkbox"/> Other		
	<input type="checkbox"/> To facilitate assembly <input checked="" type="checkbox"/> To improve reliability <input type="checkbox"/> To meet standards ()		
	<input type="checkbox"/> Part standardization <input type="checkbox"/> Product Safety		

Old part number	New part number	Description	Q'ty	Int	Page	Index	Note
G1515006	G1511201	Development Unit Ass'y	1	<i>O/O</i>	27	1	
G1525028	G1521361	Development Unit Ass'y(Black)	1	<i>O/O</i>	29	1	
G1525029	G1521362	Development Unit Ass'y(Blue)	1	<i>O/O</i>	29	8	
G1525030	G1521363	Development Unit Ass'y(Red)	1	<i>O/O</i>	29	10	
G1525031	G1521364	Development Unit Ass'y(Green)	1	<i>O/O</i>	29	2	
G1521368	G1521365	Development Unit Ass'y(Reflex Blue)	1	<i>O/O</i>	29	75	

For RoHS parts catalog

Old part number	New part number	Description	Q'ty	Int	Page	Index	Note
G1515006	G1511201	Development Unit Ass'y	1	<i>O/O</i>	27	1	
G1525028	G1521361	Development Unit Ass'y(Black)	1	<i>O/O</i>	29	1	
G1525029	G1521362	Development Unit Ass'y(Blue)	1	<i>O/O</i>	29	8	
G1525030	G1521363	Development Unit Ass'y(Red)	1	<i>O/O</i>	29	10	
G1525031	G1521364	Development Unit Ass'y(Green)	1	<i>O/O</i>	29	2	
G1521368	G1521365	Development Unit Ass'y(Reflex Blue)	1	<i>O/O</i>	29	75	

Change:

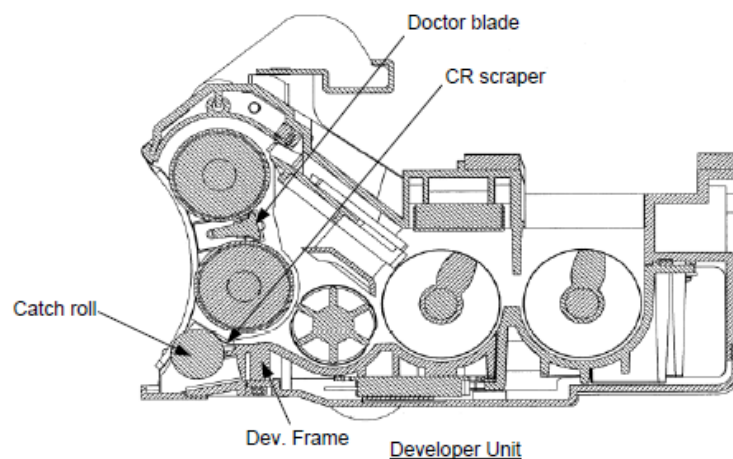
1. The material of the doctor blade for the development unit was changed (SiC and Ni-P was added to the surface of the doctor blade).
2. The double-sided tape was changed to a stronger type.

Reason:

1. To increase the durability of the doctor blade and further ensure the developer mixture does not leak out from the development unit.
2. To further ensure the CR Scraper and development unit frame are secured more strongly.

Reissued: 29-Jun-07

Model: DDP184	Date: 18-Apr-07	No.: MG150038a
---------------	-----------------	----------------


RCL (Japan) Production

MODEL NAME	V/Hz	DESTINATION	CODE	SERIAL NO.
DDP184	200 - 240V/50,60Hz	USA	G152-17	Q4870302XXX
DDP184	200 - 240V/50,60Hz	Europe	G152-27	Q4870305XXX

Model: DDP70/92/184		Date: 19-Jun-07	No.: MG150039
Modified Article: Drum Motor for non-RoHS model		Prepared by: Y.Minakawa	
From: PPBG QA service Planning Dept.			
Reason for Modification:	<input type="checkbox"/> Parts catalog correction <input checked="" type="checkbox"/> Vendor change <input type="checkbox"/> Other <input type="checkbox"/> To facilitate assembly <input type="checkbox"/> To improve reliability <input type="checkbox"/> To meet standards <input type="checkbox"/> Part standardization <input type="checkbox"/> Product Safety ()		

Note: This MB applies to the **non-RoHS** Model only.

Change:

1. Dc Motor was changed.
2. Because of this change, the Controller Board, Drum Drive Unit and Drum Motor Cable Ass'y were also changed or added.

Reason: Production of the G1501335 DC Brushless Motor was discontinued.

1. DDP70

Old part number	New part number	New Description	Q'ty	Int	Page	Index	Note
G1501335	-	Dc Brushless Motor 1 –DC25W	-	-	23	4	Delete
G1501375	G1502068	Control Board 411	1	X/O	7	87	
G1501220	G1502067	Drum Drive Unit	1	O/O	23	1	
-	G1502071	Drum Motor Cable Ass'y(R)	1	-	23	73	
-	G1502069	Control Board 417	1	-	7	109	for CS

For RoHS parts catalog

Old part number	New part number	New Description	Q'ty	Int	Page	Index	Note
G1501335	-	Dc Brushless Motor 1 –DC25W	-	-	21	4	Delete
G1501375	G1502068	Control Board 411	1	X/O	7	87	
G1501220	G1502067	Drum Drive Unit	1	O/O	21	1	
-	G1502071	Drum Motor Cable Ass'y(R)	1	-	21	73	
-	G1502069	Control Board 417	1	-	7	109	for CS

Important:

- 1) When you replace the old DC Brushless Motor for the first time, be sure to install the RoHS DC Motor (G1508335), the new control board and the Drum Motor Cable Ass'y **together as a set**.
- 2) If the Container Stacker is connected to the DDP70, use Controller Board 417 (G1502069).

Model: DDP70/92/184	Date: 19-Jun-07	No.: MG150039
---------------------	-----------------	---------------

2. DDP92

Old part number	New part number	New Description	Q'ty	Int	Page	Index	Note
G1511023	-	DC Motor	-	-	23	4	Delete
G1511034	G1511211	Control Board 531	1	X/O	7	90	
G1511009	G1511210	Drum Drive Unit	1	O/O	23	1	
-	G1502071	Drum Motor Cable Ass'y(R)	1	-	23	73	

RoHS parts catalog

Old part number	New part number	New Description	Q'ty	Int	Page	Index	Note
G1511023	-	Dc Motor	-	-	23	4	Delete
G1511034	G1511211	Control Board 531	1	X/O	8	90	
G1511009	G1511210	Drum Drive Unit	1	O/O	23	1	
-	G1502071	Drum Motor Cable Ass'y(R)	1	-	23	73	

Important: When you replace the old DC Motor for the first time, be sure to install the RoHS DC Motor (G1518023), the new control board and the Drum Motor Cable Ass'y together as a set.

3. DDP184

Old part number	New part number	New Description	Q'ty	Int	Page	Index	Note
G1511023	-	DC Motor	-	-	35	4	Delete
			-		67	4	
G1521078	-	Control Board –Front Engine	-	-	9	90	Delete
G1521079	-	Control Board 622–Rear Engine	-	-	13	116	Delete
G1511009	G1511210	Drum Drive Unit	1	O/O	35	1	
G1521037	G1521377	Drum Drive Unit	1	O/O	67	1	
-	G1502071	Drum Motor Cable Ass'y(R)	1	-	35	73	
			1		67	73	

RoHS parts catalog

Old part number	New part number	New Description	Q'ty	Int	Page	Index	Note
G1511023	-	DC Motor	-	-	35	4	Delete
			-		67	4	
G1521078	-	Control Board –Front Engine	-	-	9	90	Delete
G1521079	-	Control Board 622–Rear Engine	-	-	14	116	Delete
G1511009	G1511210	Drum Drive Unit	1	O/O	35	1	
G1521037	G1521377	Drum Drive Unit	1	O/O	67	1	
-	G1502071	Drum Motor Cable Ass'y(R)	1	-	35	73	
			1		67	73	

Model: DDP70/92/184

Date: 19-Jun-07

No.: MG150039

Important: When you replace the old DC Motor for the first time, be sure to install the RoHS DC Motor (G1518023), the RoHS control board (G1528078 or G1528079) and the Drum Motor Cable Ass'y **together as a set.**

RCL (Japan) Production

MODEL NAME	V/Hz	DESTINATION	CODE	SERIAL NO.
DDP70	200 - 240V/50,60Hz	USA	G150-17	Q4670302XXX
DDP70	200 - 240V/50,60Hz	Europe	G150-27	Q4670305XXX
DDP92	200 - 240V/50,60Hz	USA	G151-17	Q4770302XXX
DDP92	200 - 240V/50,60Hz	Europe	G151-27	Q4770305XXX
DDP184	200 - 240V/50,60Hz	USA	G152-17	Q4870302XXX
DDP184	200 - 240V/50,60Hz	Europe	G152-27	Q4870305XXX

Model: DDP184		Date: 6-Jul-07	No.: MG150040
Modified Article: HDD Ass'y		Prepared by: Y.Minakawa	
From: PPBG QA service Plannning Dept.			
Reason for Modification:	<input type="checkbox"/> Parts catalog correction <input type="checkbox"/> Vendor change <input checked="" type="checkbox"/> Other <input type="checkbox"/> To facilitate assembly <input type="checkbox"/> To improve reliability <input type="checkbox"/> To meet standards <input type="checkbox"/> Part standardization <input type="checkbox"/> Product Safety ()		

Change: The HDDs for the front and rear engine are now packed together in the same box.

Reason: To ensure that a firmware mismatch between the two HDDs does not occur.

Old part number	New part number	New Description	Q'ty	Int	Page	Index	Note
G1525217	G1521384	HDD(184DP-Front/Rear) Ass'y - 2PCS/SET	1	O/O	9	82	2pcs
			1		13	107	

For RoHS parts catalog

Old part number	New part number	New Description	Q'ty	Int	Page	Index	Note
G1525217	G1521384	HDD(184DP-Front/Rear) Ass'y - 2PCS/SET	1	O/O	9	82	2pcs
			1		14	107	

Model: DDP		Date: 25-Sep-07	No.: MG150041
Modified Article: Corotron Ass'y and Charger Ass'y		Prepared by: Y.Minakawa	
From: PPBG QA/Service Planning Dept.			
Reason for Modification:	<input type="checkbox"/> Parts catalog correction	<input type="checkbox"/> Vendor change	<input checked="" type="checkbox"/> Other
	<input type="checkbox"/> To facilitate assembly	<input type="checkbox"/> To improve reliability	<input type="checkbox"/> To meet standards
	<input type="checkbox"/> Part standardization	<input type="checkbox"/> Product Safety	()

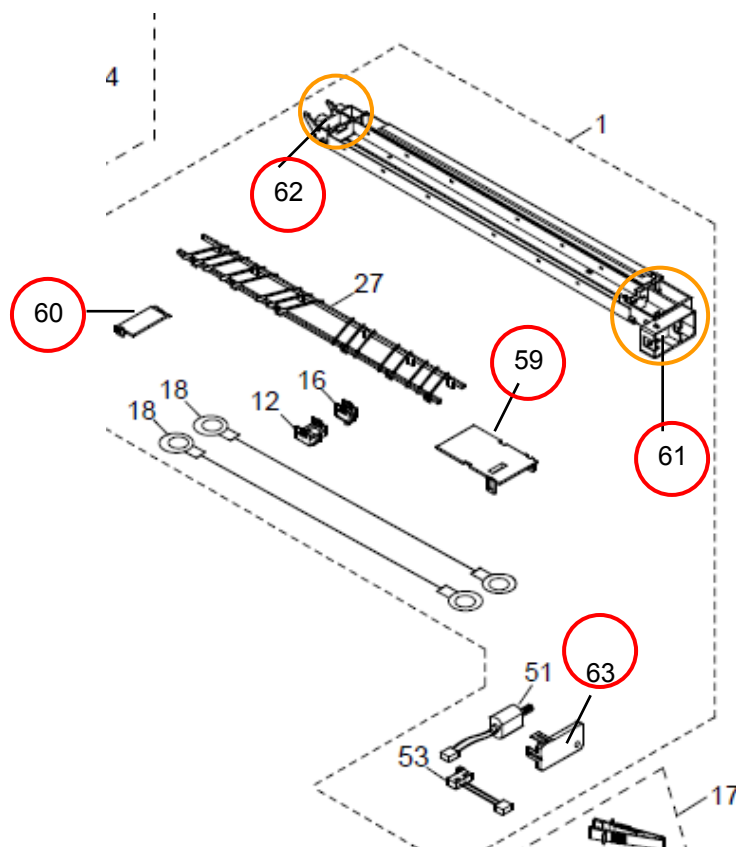
Change: The individual parts of the Corotron Ass'y and the Charger Ass'y were registered as service parts.

Reason: To facilitate servicing in the field.

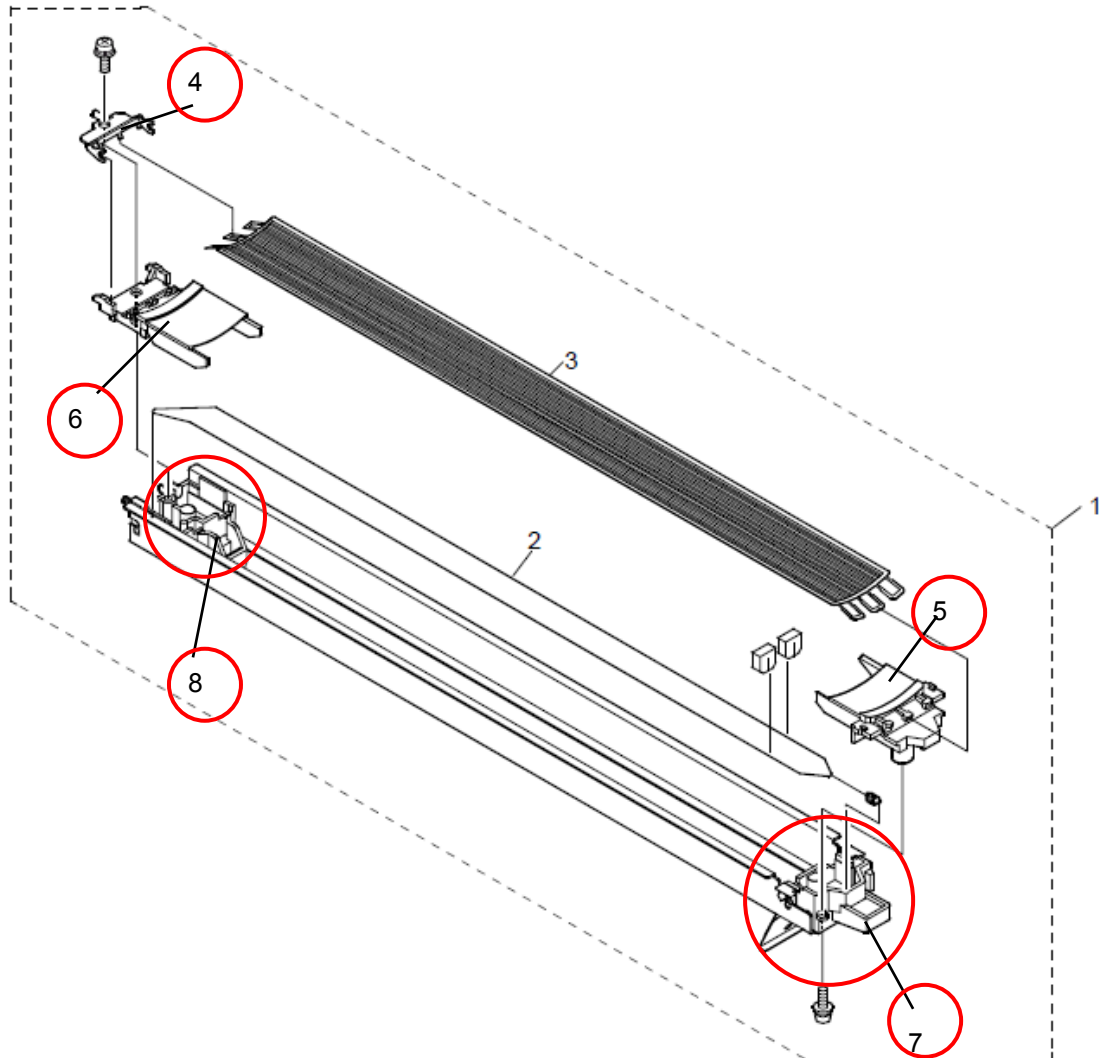
For DDP70

Old part number	New part number	Description	Q'ty	Int	Page	Index	Note
-	G1502098	Grid Tensioner Ass'y	1	-	15	4	
-	G1502099	Grid Stand(F)	1	-	15	5	
-	G1502100	Grid Stand(R)	1	-	15	6	
-	G1502101	Holder(F)	1	-	15	7	
-	G1502102	Holder(R)	1	-	15	8	
-	G1502093	Cover(F)	1	-	31	59	
-	G1502094	Cover(R)	1	-	31	60	
-	G1502095	Case(F)	1	-	31	61	
-	G1502096	Case(R)	1	-	31	62	
-	G1502097	Motor Cover	1	-	31	63	

Pg. 30



Pg. 14



Model: DDP

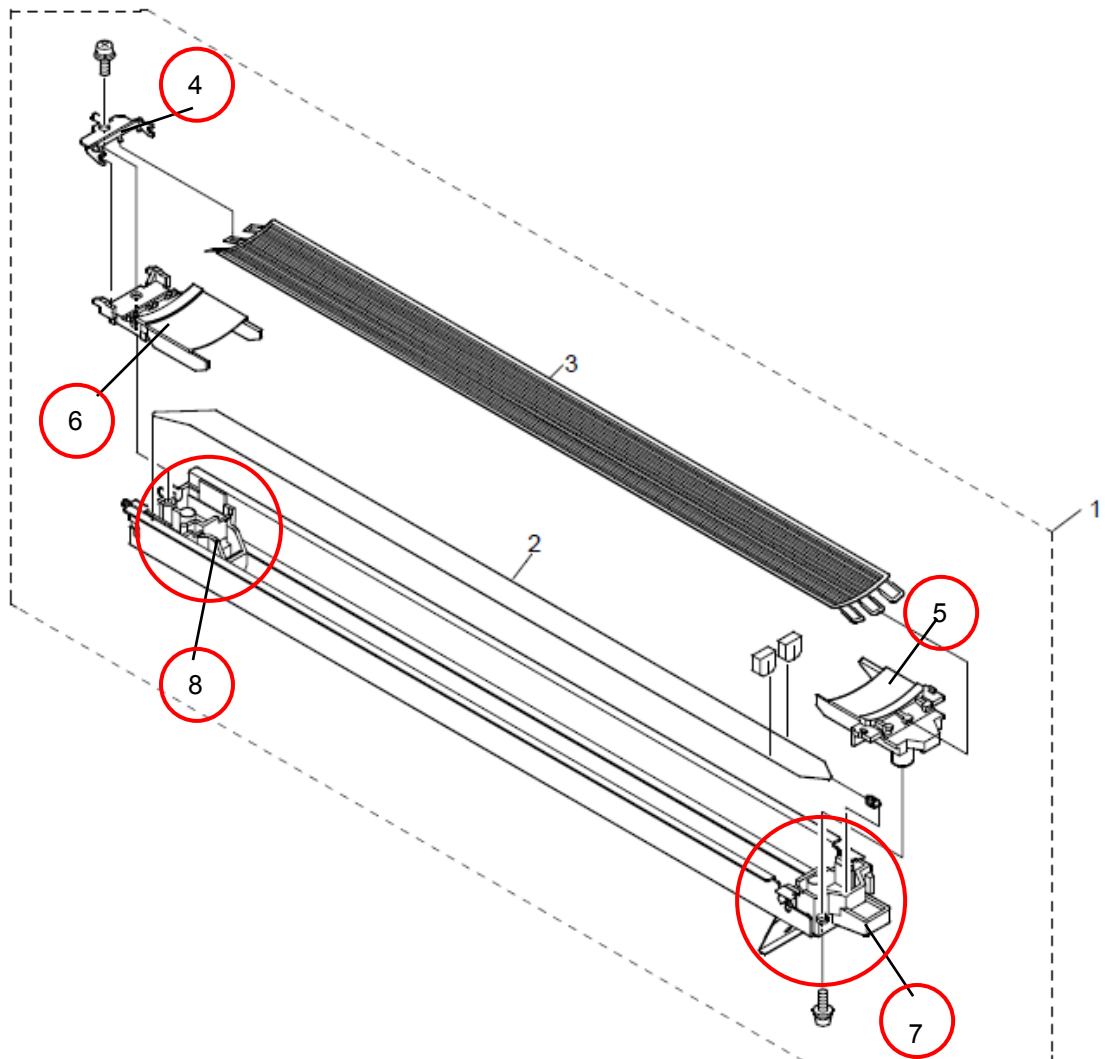
Date: 25-Sep-07

No.: MG150041

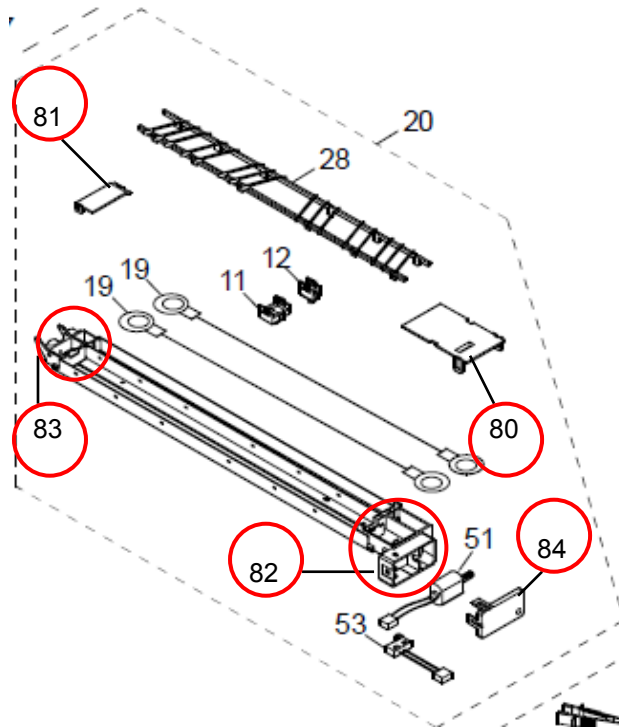
For DDP92

Old part number	New part number	Description	Q'ty	Int	Page	Index	Note
-	G1502098	Grid Tensioner Ass'y	1	-	17	4	
-	G1502099	Grid Stand(F)	1	-	17	5	
-	G1502100	Grid Stand(R)	1	-	17	6	
-	G1502101	Holder(F)	1	-	17	7	
-	G1502102	Holder(R)	1	-	17	8	
-	G1502093	Cover(F)	1	-	33	80	
-	G1502094	Cover(R)	1	-	33	81	
-	G1502095	Case(F)	1	-	33	82	
-	G1502096	Case(R)	1	-	33	83	
-	G1502097	Motor Cover	1	-	33	84	

Pg. 16



Pg. 32



Model: DDP

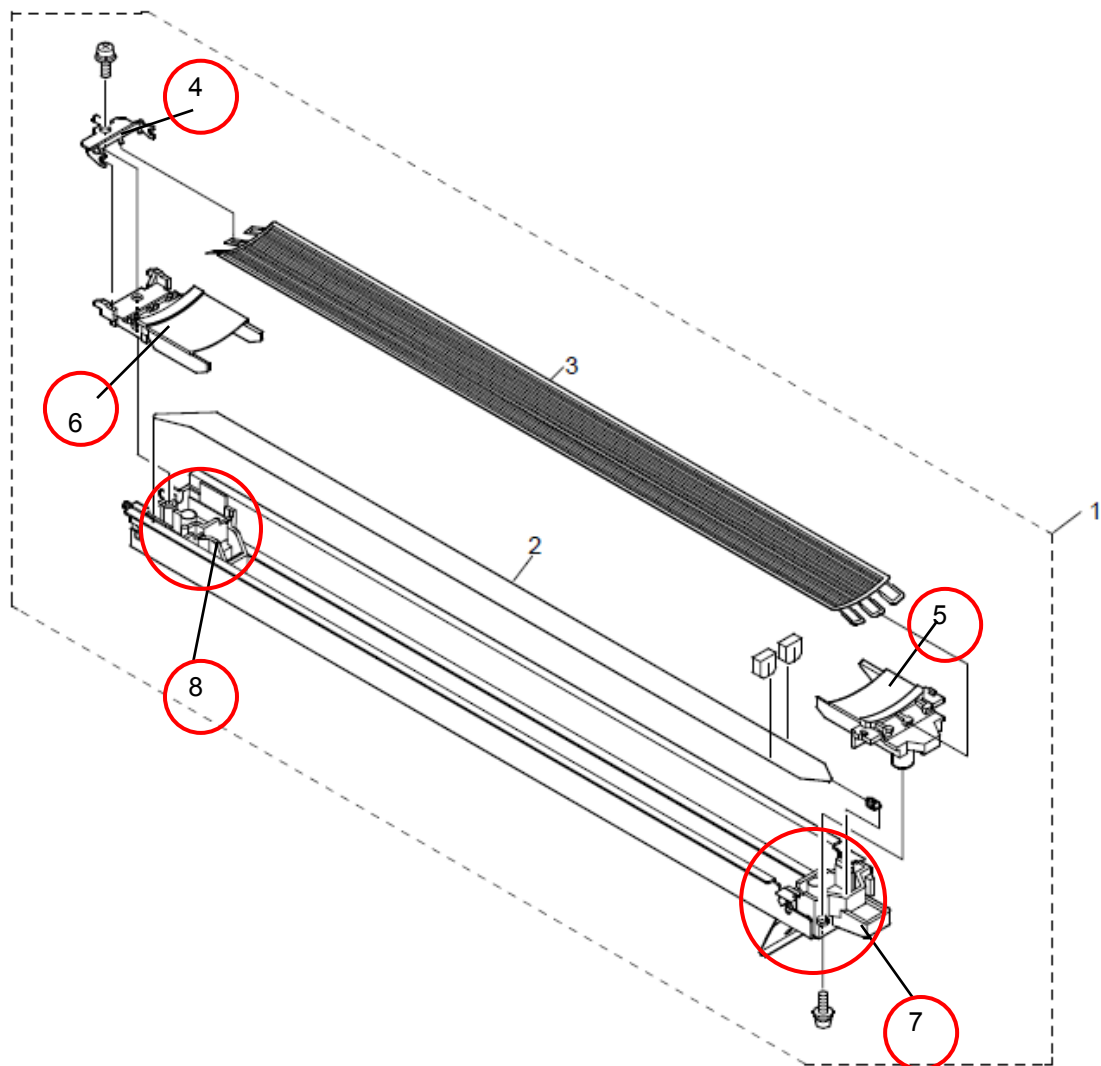
Date: 25-Sep-07

No.: MG150041

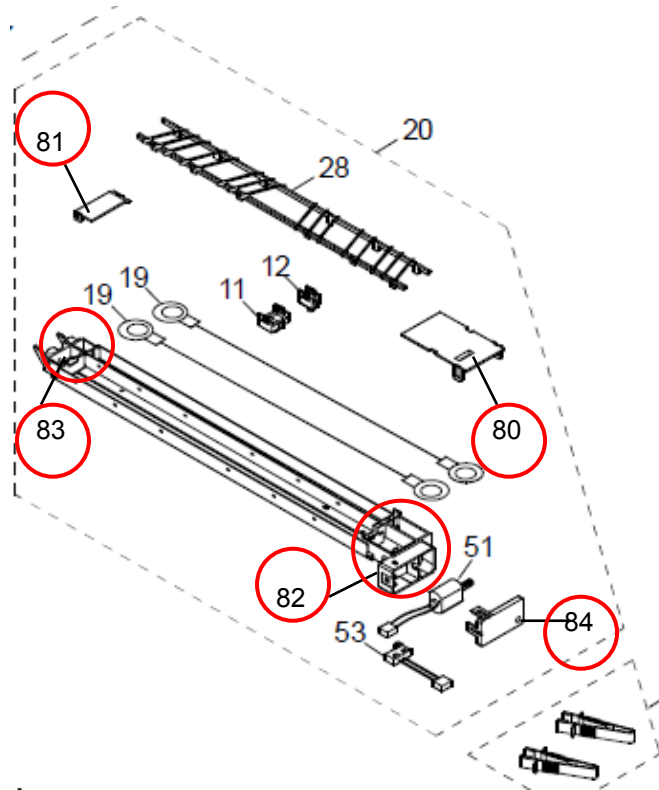
For DDP184

Old part number	New part number	Description	Q'ty	Int	Page	Index	Note
-	G1502098	Grid Tensioner Ass'y	1	-	24	4	
-	G1502099	Grid Stand(F)	1	-	24	5	
-	G1502100	Grid Stand(R)	1	-	24	6	
-	G1502101	Holder(F)	1	-	24	7	
-	G1502102	Holder(R)	1	-	24	8	
-	G1502093	Cover(F)	1	-	47	80	
-	G1502094	Cover(R)	1	-	47	81	
-	G1521398	Case(F)	1	-	47	82	
-	G1521399	Case(R)	1	-	47	83	
-	G1502097	Motor Cover	1	-	47	84	

Pg. 23



Pg. 46



Model: DDP70		Date: 30-Oct-07	No.: MG150042
Modified Article: Development Unit		Prepared by: T. Tadokoro	
From: PPBG QA/Service Planning Dept.			
Reason for Modification:	<input type="checkbox"/> Parts catalog correction <input type="checkbox"/> Vendor change <input type="checkbox"/> Other <input type="checkbox"/> To facilitate assembly <input checked="" type="checkbox"/> To improve reliability <input type="checkbox"/> To meet standards <input type="checkbox"/> Part standardization <input type="checkbox"/> Product Safety ()		

For RoHS parts catalog

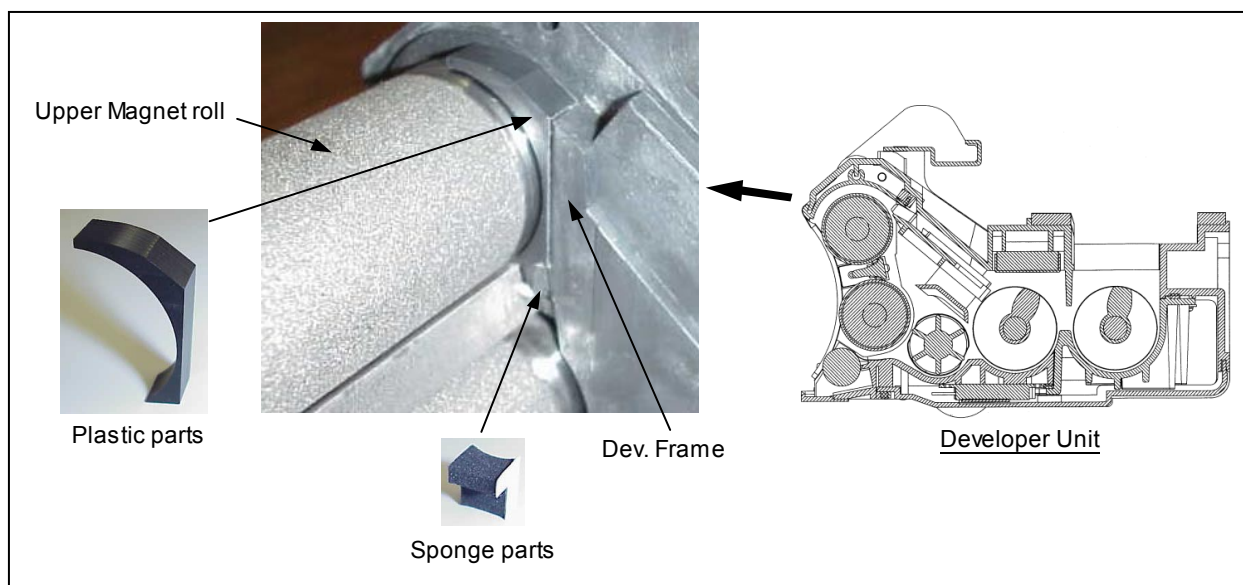
Old part number	New part number	New Description	Q'ty	Int	Page	Index	Note
G1502056	G1502080	Development Unit Ass'y	1	O/O	17	2	

Change:

Plastic parts and sponge parts are attached between the Dev.frame and Upper magnet roll.
Applied to both ends of the Upper magnet roll.

Reason:

To prevent developer mixture leaks.


RCL (Japan) Production

MODEL NAME	V/Hz	DESTINATION	CODE	SERIAL NO.
DDP70	200 - 240V/50,60Hz	USA	G150-17	Q4670702XXX
DDP70	200 - 240V/50,60Hz	Europe	G150-27	Q4670705XXX

Model: DDP92		Date: 30-Oct-07	No.: MG150043
Modified Article: Development Unit		Prepared by: T. Tadokoro	
From: PPBG QA/Service Planning Dept.			
Reason for Modification:	<input type="checkbox"/> Parts catalog correction <input type="checkbox"/> Vendor change <input type="checkbox"/> Other <input type="checkbox"/> To facilitate assembly <input checked="" type="checkbox"/> To improve reliability <input type="checkbox"/> To meet standards <input type="checkbox"/> Part standardization <input type="checkbox"/> Product Safety ()		

For RoHS parts catalog

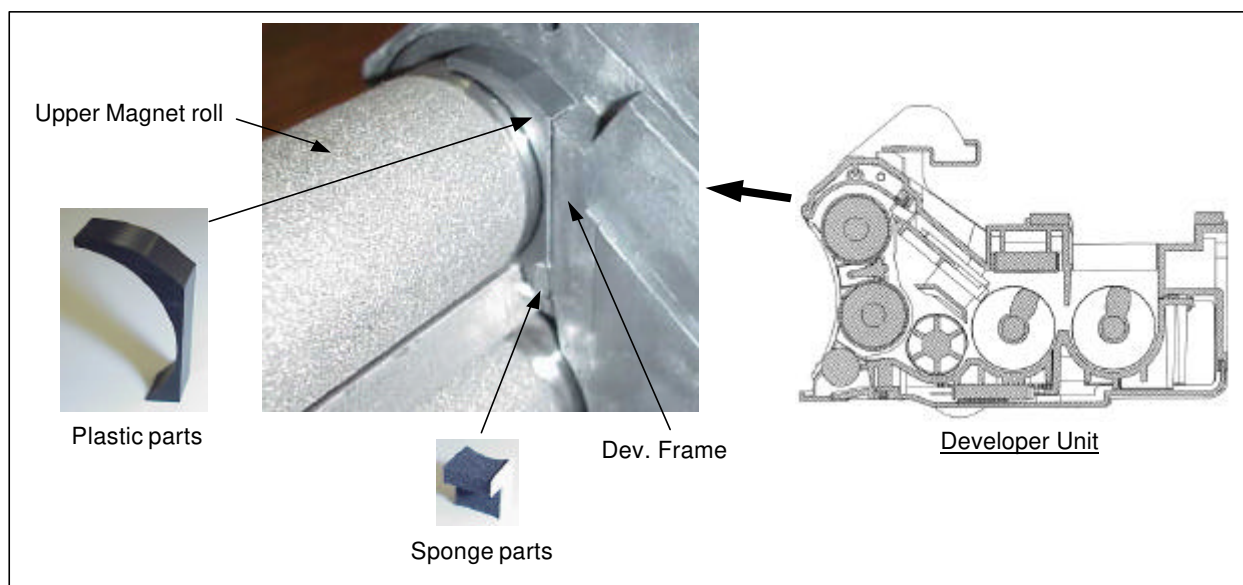
Old part number	New part number	New Description	Q'ty	Int	Page	Index	Note
G1511201	G1511219	Development Unit Ass'y	1	O/O	19	1	

Change:

Plastic parts and sponge parts are attached between the Dev.frame and Upper magnet roll.
Applied to both ends of the Upper magnet roll.

Reason:

To prevent developer mixture leaks.


RCL (Japan) Production

MODEL NAME	V/Hz	DESTINATION	CODE	SERIAL NO.
DDP92	200 - 240V/50,60Hz	USA	G151-17	Q4770702XXX
DDP92	200 - 240V/50,60Hz	Europe	G151-27	Q4770705XXX

Model: DDP184		Date: 30-Oct-07	No.: MG150044
Modified Article: Development Unit		Prepared by: T. Tadokoro	
From: PPBG QA/Service Planning Dept.			
Reason for Modification:	<input type="checkbox"/> Parts catalog correction <input type="checkbox"/> Vendor change <input type="checkbox"/> Other <input type="checkbox"/> To facilitate assembly <input checked="" type="checkbox"/> To improve reliability <input type="checkbox"/> To meet standards <input type="checkbox"/> Part standardization <input type="checkbox"/> Product Safety ()		

For RoHS parts catalog

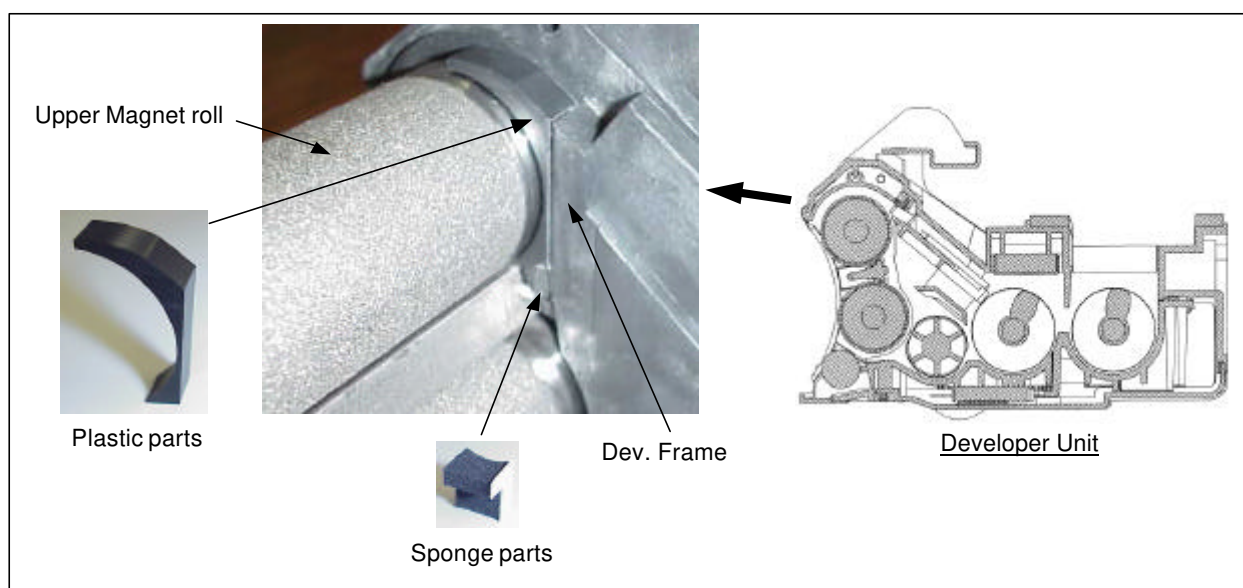
Old part number	New part number	New Description	Q'ty	Int	Page	Index	Note
G1511201	G1511219	Development Unit Ass'y	1	O/O	27	1	
G1521361	G1521389	Development Unit Ass'y(Black)	1	O/O	29	1	
G1521362	G1521390	Development Unit Ass'y(Blue)	1	O/O	29	8	
G1521363	G1521391	Development Unit Ass'y(Red)	1	O/O	29	10	
G1521364	G1521392	Development Unit Ass'y(Green)	1	O/O	29	2	
G1521365	G1521393	Development Unit Ass'y(Reflex Blue)	1	O/O	29	75	

Change:

Plastic parts and sponge parts are attached between the Dev.frame and Upper magnet roll.
Applied to both ends of the Upper magnet roll.

Reason:

To prevent developer mixture leaks.



Model: DDP184

Date: 30-Oct-07

No.: MG150044

RCL (Japan) Production

MODEL NAME	V/Hz	DESTINATION	CODE	SERIAL NO.
DDP184	200 - 240V/50,60Hz	USA	G152-17	Q4870702XXX
DDP184	200 - 240V/50,60Hz	Europe	G152-27	Q4870705XXX

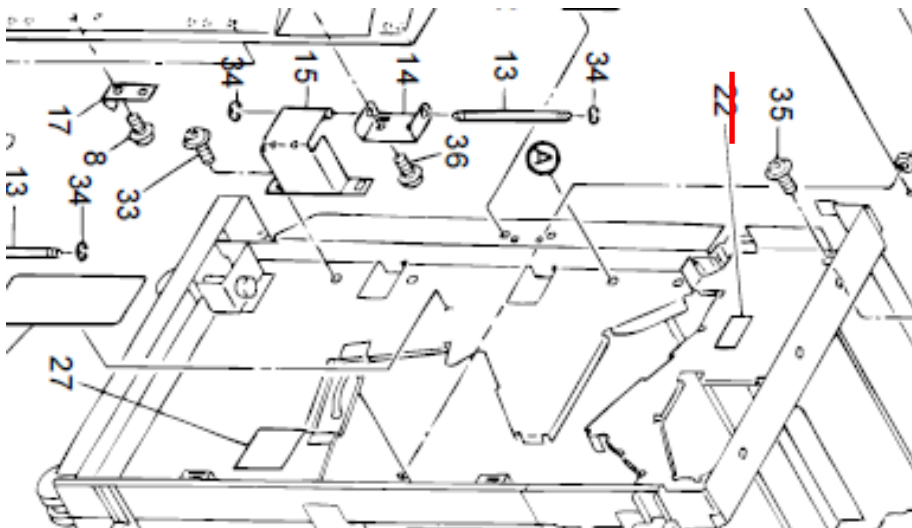
Model: DDP Finisher		Date: 21-Feb-08	No.: MG150045
Modified Article: Parts Catalog Correction		Prepared by: T.Tadokoro	
From: PPBG QA/Service Planning Dept.			
Reason for Modification:	<input checked="" type="checkbox"/> Parts catalog correction <input type="checkbox"/> Vendor change <input type="checkbox"/> Other <input type="checkbox"/> To facilitate assembly <input type="checkbox"/> To improve reliability <input type="checkbox"/> To meet standards <input type="checkbox"/> Part standardization <input type="checkbox"/> Product Safety ()		

1. DDP70 Finisher

Old part number	New part number	Description	Q'ty	Int	Page	Index	Note
G8501360	-	Label /A	1	-	4	22	Delete

Change: This part has been deleted.

Reason: Label/A(G8501360) is not appropriate.

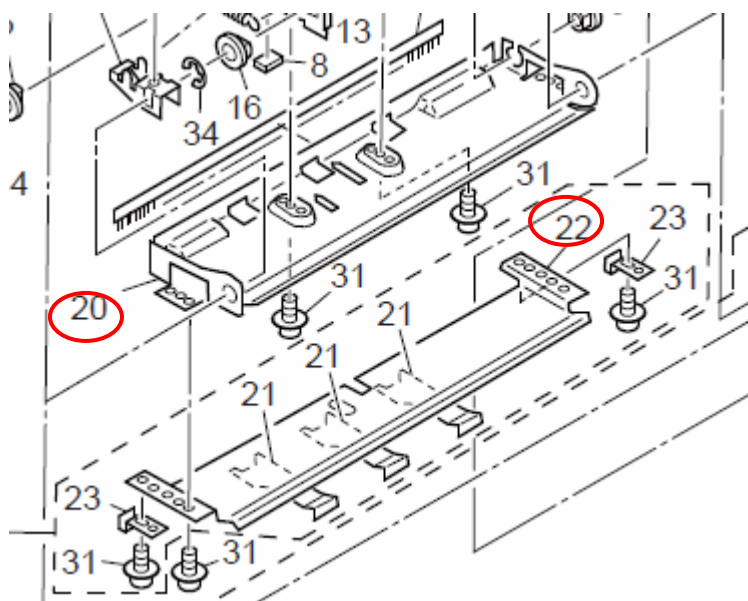


Model: DDP Finisher	Date: 21-Feb-08	No.: MG150045
---------------------	-----------------	---------------

2. DDP92/184 Finisher

Old part number	New part number	Description	Q'ty	Int	Page	Index	Note
G8581050	G8501044	Paper exit guide plate/U	1	○/○	16	20	
G8581051	G8501045	Paper exit guide plate/M	1	○/○	16	22	

Change/Reason: Due to overlapping Ricoh P/Ns' for the same parts (Old P/N and New P/N), the old Ricoh P/Ns' have been removed.

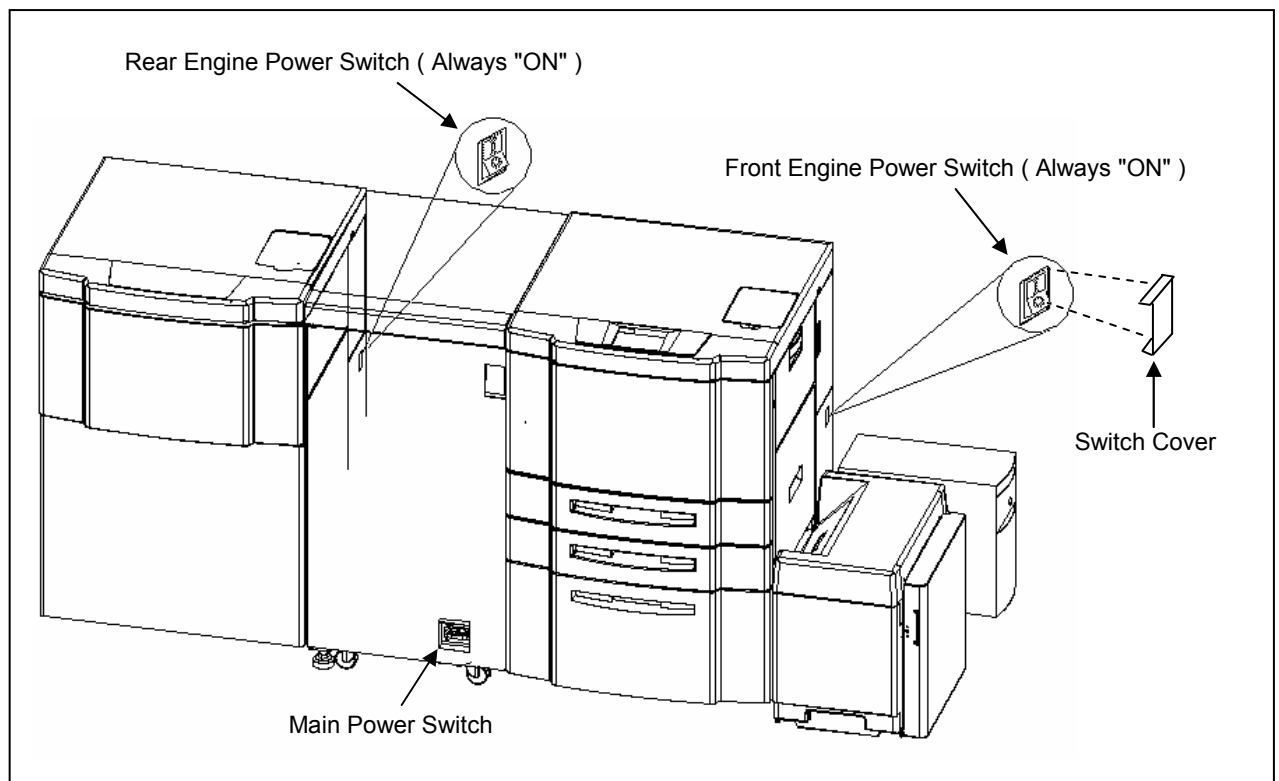


Model: DDP184		Date: 7-Oct-08	No.: MG150046
Modified Article: SW Cover		Prepared by: T. Tadokoro	
From: PPBG QA/Service Planning Dept.			
Reason for Modification:	<input type="checkbox"/> Parts catalog correction <input type="checkbox"/> Vendor change <input type="checkbox"/> Other <input type="checkbox"/> To facilitate assembly <input checked="" type="checkbox"/> To improve reliability <input type="checkbox"/> To meet standards <input type="checkbox"/> Part standardization <input type="checkbox"/> Product Safety ()		

Old part number	New part number	New Description	Q'ty	Int	Page	Index	Note
-	G1521404	SW Cover	1	-	9	90	Add

Change /Reason:

Attached the cover for the switch to the front engine to prevent false operation of the power supply switch.



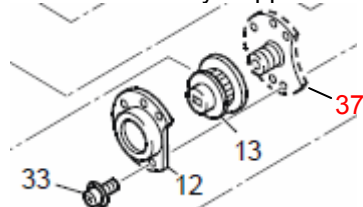
Switch Cover Illustration

Model: DDP Finisher		Date: 08-Dec-08	No.: MG150047
Modified Article: Pulley Support Shaft		Prepared by: T.Tadokoro	
From: PPBG QA/Service Planning Dept.			
Reason for Modification:	<input type="checkbox"/> Parts catalog correction <input type="checkbox"/> Vendor change <input checked="" type="checkbox"/> Other <input type="checkbox"/> To facilitate assembly <input type="checkbox"/> To improve reliability <input type="checkbox"/> To meet standards <input type="checkbox"/> Part standardization <input type="checkbox"/> Product Safety ()		

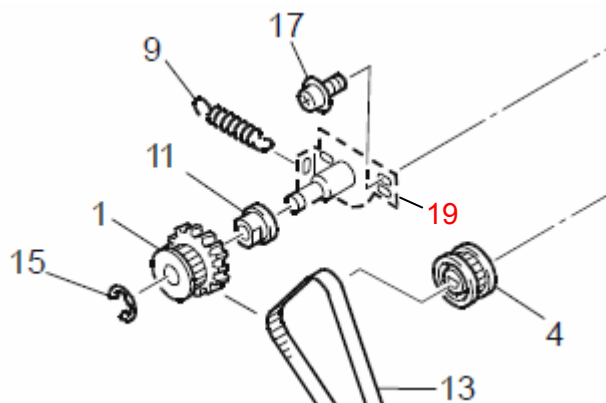
Old part number	New part number	Description	Q'ty	Int	Page	Index	Note
-	G8581497	Pulley Support Shaft	1	-	20	37	Add
-	G8581498	Belt Tension Plate	1	-	22	19	Add
-	G8581499	Belt Tension Plate	2	-	22	20	Add

Change/Reason: New Parts are added to Finisher Parts Catalog.

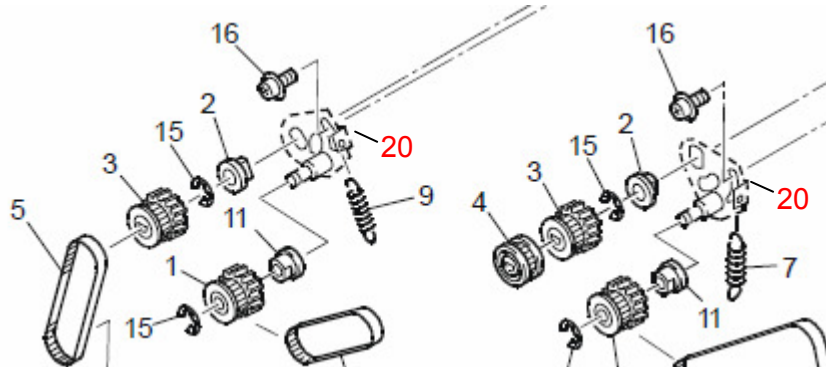
G8581497 Pulley Support Shaft



G8581498 Belt Tension Plate



G8581499 Belt Tension Plate





Part Change Information List

Date: April 30, 2009

Model	Code	PCIL Number	PCIL Correction	Old part number	New part number	Description	Old Q'ty	New Q'ty	Int	3DPC	Page	Index	Set	Set Int	RTB	Note	Ref Number
DDP	G150	200904		G1505339	G1502114	POWER SUPPLY UNIT	1	1	X/O		6	89					V0804140
DDP	G151	200904		G1505339	G1502114	POWER SUPPLY UNIT	1	1	X/O		6	95					V0804140
DDP	G152	200904		G1505339	G1502114	POWER SUPPLY UNIT	1	1	X/O		8	95					V0804140



Part Change Information List

Date: July 31, 2009

Model	Code	PCIL Nr.	PCIL Correction	Old part number	New part number	Description	Old Q'ty	New Q'ty	Int	3DPC	Page	Index	Set	Set Int	RTB	Note	Ref. Nr.
DDP	G152	200907		G1511045	G1501487	SEAL (K)	1	1	O/O		35	36			RD392004	RG150068	V0900367
DDP	G152	200907			G1505291	COLOTRON UNIT	0	1			46	80			RD392004		V0804142
DDP	G152	200907		G1511045	G1501487	SEAL (K)	1	1	O/O		67	36			RD392004	RG150068	V0900367

Model	Code	PCIL Nr.	PCIL Correctio	Old part number	New part number	Description	Old Q'ty	New Q'ty	Int	3DPC	Page	Index	Set	Set Int	RTB	Note	Ref. Nr.	ECN Nr.
DDP	G151	201011		G1518023	G1508335	DC BRUSHLESS MOTOR 1 - DC25W	1	1	O/O		45	25					V1000265	
DDP	G152	201011		G1518023	G1508335	DC BRUSHLESS MOTOR 1 - DC25W	1	1	O/O		75	25					V1000265	





Part Change Information List

Date: May 30, 2014

Model	Code	PCIL Number	PCIL Correction	Old part number	New part number	Description	Old Q'ty	New Q'ty	Int	3DPC	Page	Index	Set	Set Int	RTB	Note	Ref Number	ECN Number
DDP	G150	201302		G1501877	G1509500	CONTROLLERBOARD(70) ASSY -PCL	1	1	X/O		7	47					V1300386	



Part Change Information List

Date: December 26, 2014

Model	Code	PCIL Number	PCIL Correction	Old part number	New part number	Description	Old Q'ty	New Q'ty	Int	3DPC	Page	Index	Set	Set Int	RTB	Note	Ref Number	ECN Number
DDP	G150	201309		G1501875	G1509100	CONTROLLERBOARD(70) ASSY -PSPCL	1	1	X/O		7	47			RG150071		V1300386	
DDP	G151	201309		G1511094	G1519501	CONTROLLER BOARD(92) ASSY -PCL	1	1	X/O		7	87			RG150071		V1300386	
DDP	G151	201309		G1511085	G1519500	CONTROLLER BOARD(92) ASSY -PSPCL	1	1	X/O		7	87			RG150071		V1300386	
DDP	G152	201309		G1521239	G1529101	CE BOARD(184) ASSY (REAR)	1	1	X/O		13	113			RG150072		V1300386	
DDP	G152	201309		G1521238	G1529100	CE BOARD(184) ASSY (FRONT)	1	1	X/O		88	9			RG150072		V1300386	



Part Change Information List

Date: July 1, 2016

Model	Code	PCIL Number	PCIL Correction	Old part number	New part number	Description	Old Q'ty	New Q'ty	Int	3DPC	Page	Index	Set	Set Int	RTB	Note	Ref Number	ECN Number
DDP	G150	201606		G1502066		DC MOTOR:ASS'Y		---	X/O	N	8	38				Parts Catalogs (March 2008 edition)	V1601908	