

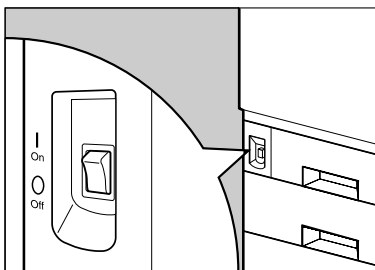
Notes for Users

This note provides revised information about using this product.

The procedure in *Maintenance Guide*, "Checking the Earth Leakage Breaker" contained errors. Follow the correct procedure given here.

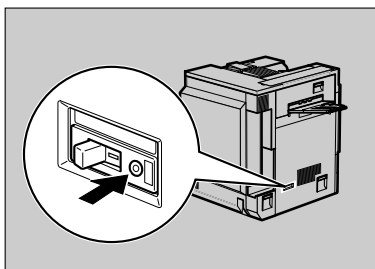
1 Make sure the printer's ground is properly connected.

2 Turn off the power.

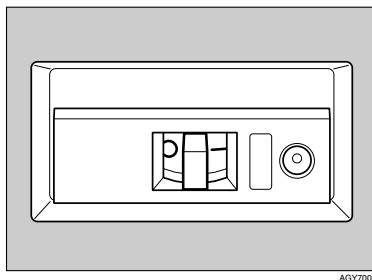


If the 2 tray finisher or the booklet finisher is attached to the printer, detach it before checking the earth leakage breaker.

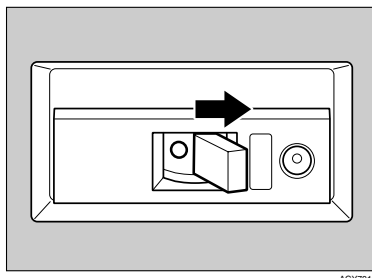
3 Press the earth leakage breaker's test button with a pointed object such as a ballpoint pen.



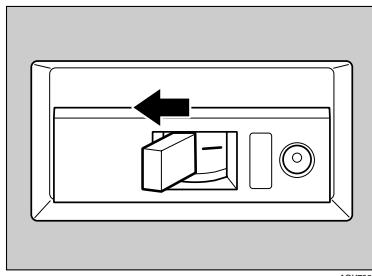
4 Make sure the earth leakage breaker is in the neutral position between "O" Off and "I" On.



5 Move the earth leakage breaker to the "O" position.



6 Reset the earth leakage breaker by moving it to the "I" position.



7 Turn on the power.

Note

- ☐ If the printer does not start up when the main power is switched on, check whether the earth leakage breaker has tripped. If it has, contact your sales or service representative. Do not reset the earth leakage breaker yourself.

Copyright © 2005

Printed in Japan

EN USA G131-8607



G1318607