

Model: Model G-P2		Date: 3-Oct-06	No.: MG160001
Modified Article: Laser Diode Unit		Prepared by: K. Moriizumi	
From: 1st Tech. Support Sec. Service Support Dept.			
Reason for Modification:	<input type="checkbox"/> Parts catalog correction <input type="checkbox"/> Vendor change <input checked="" type="checkbox"/> Other <input type="checkbox"/> To facilitate assembly <input type="checkbox"/> To improve reliability <input type="checkbox"/> To meet standards <input type="checkbox"/> Part standardization <input type="checkbox"/> Product Safety ()		

Old part number	New part number	Description	Q'ty	Int	Page	Index	Note
G1021960	G1021955	Laser Diode Unit	1-1	O/O	17	9	

Change: The materials for these parts were changed to more environmentally-friendly types.

Reason: This is part of Ricoh's ongoing application of in-house environmental standards.

Model: Model G-P2		Date: 27-Nov-06	No.: MG160002
Modified Article: Photointerruptor		Prepared by: S. Tomoe	
From: 1st Tech. Support Sec. Service Support Dept.			
Reason for Modification:	<input checked="" type="checkbox"/> Parts catalog correction <input type="checkbox"/> To facilitate assembly <input type="checkbox"/> Part standardization	<input type="checkbox"/> Vendor change <input type="checkbox"/> To improve reliability <input type="checkbox"/> Product Safety	<input type="checkbox"/> Other <input type="checkbox"/> To meet standards ()

Old part number	New part number	Description	Q'ty	Int	Page	Index	Note
AW020020	GW020020	Photointerruptor: LG248NL1	2-2		29	11	

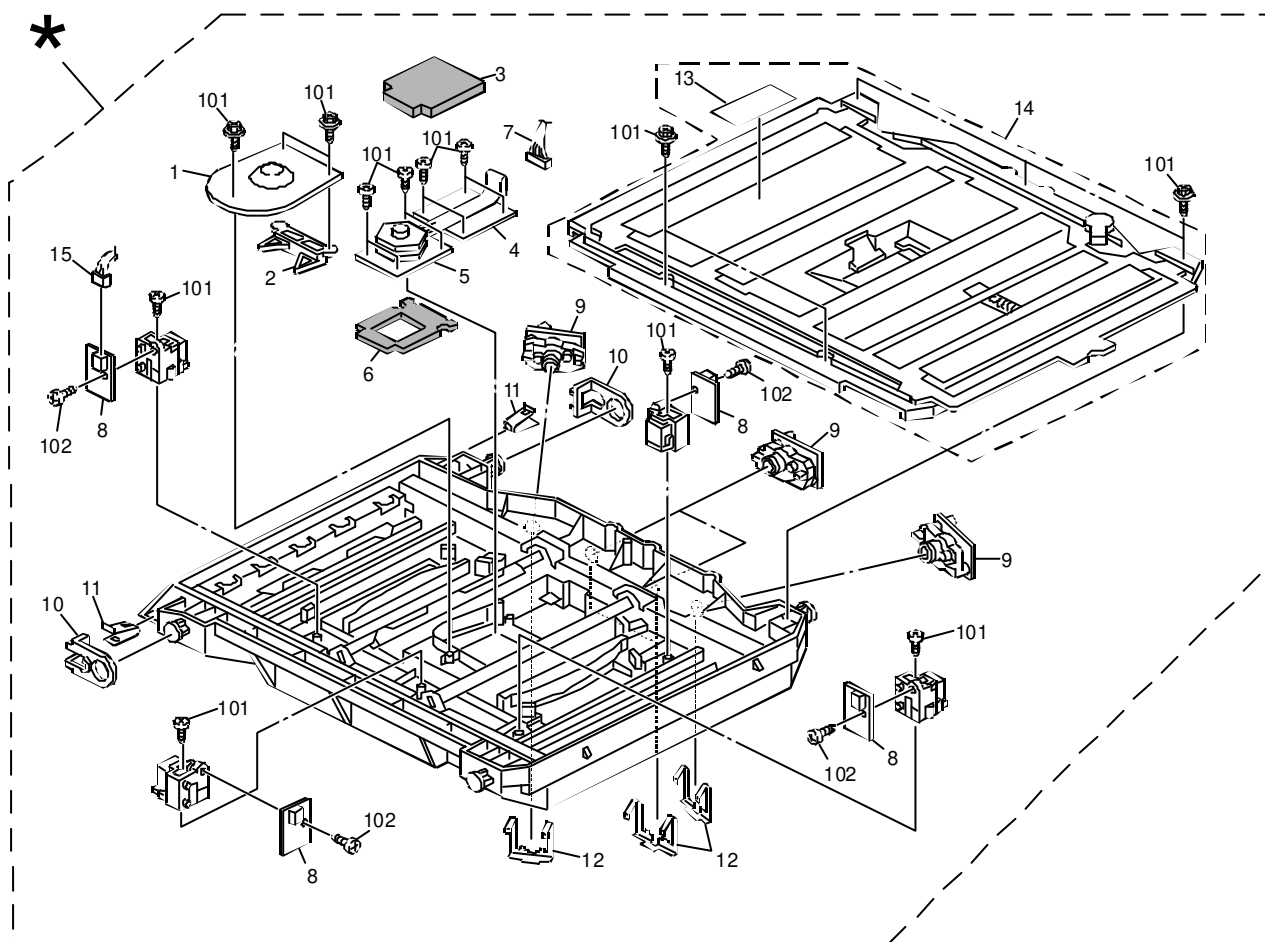
Change/Reason: The part number in the Parts Catalog was corrected.

Model: G-P2		Date: 16-Jan-07	No.: MG160003
Modified Article: Imaging Unit		Prepared by: S. Tomoe	
From: 1st Tech. Support Sec. Service Support Dept.			
Reason for Modification:	<input type="checkbox"/> Parts catalog correction	<input type="checkbox"/> Vendor change	<input checked="" type="checkbox"/> Other
	<input type="checkbox"/> To facilitate assembly	<input type="checkbox"/> To improve reliability	<input type="checkbox"/> To meet standards
	<input type="checkbox"/> Part standardization	<input type="checkbox"/> Product Safety	()

Old part number	New part number	Description	Q'ty	Int	Page	Index	Note
	G1591850	Imaging Unit Assembly	0-1		17	*	

Change: This part was added.

Reason: A request was received from the field.

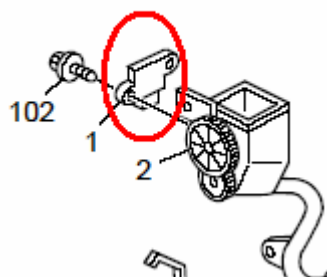


Model: G-P2		Date: 10-Jul-07	No.: MG160004
Modified Article: Toner End Sensor		Prepared by: K. Moriizumi	
From: 1st Tech. Support Sec. Service Support Dept.			
Reason for Modification:	<input checked="" type="checkbox"/> Parts catalog correction <input type="checkbox"/> To facilitate assembly <input type="checkbox"/> Part standardization	<input type="checkbox"/> Vendor change <input type="checkbox"/> To improve reliability <input type="checkbox"/> Other	<input type="checkbox"/> To meet standards ()

Old part number	New part number	Description	Q'ty	Int	Page	Index	Note
	GW230006	Toner End Sensor	4		33	1	

Change: This part was added.

Reason: In accordance with a request from the field



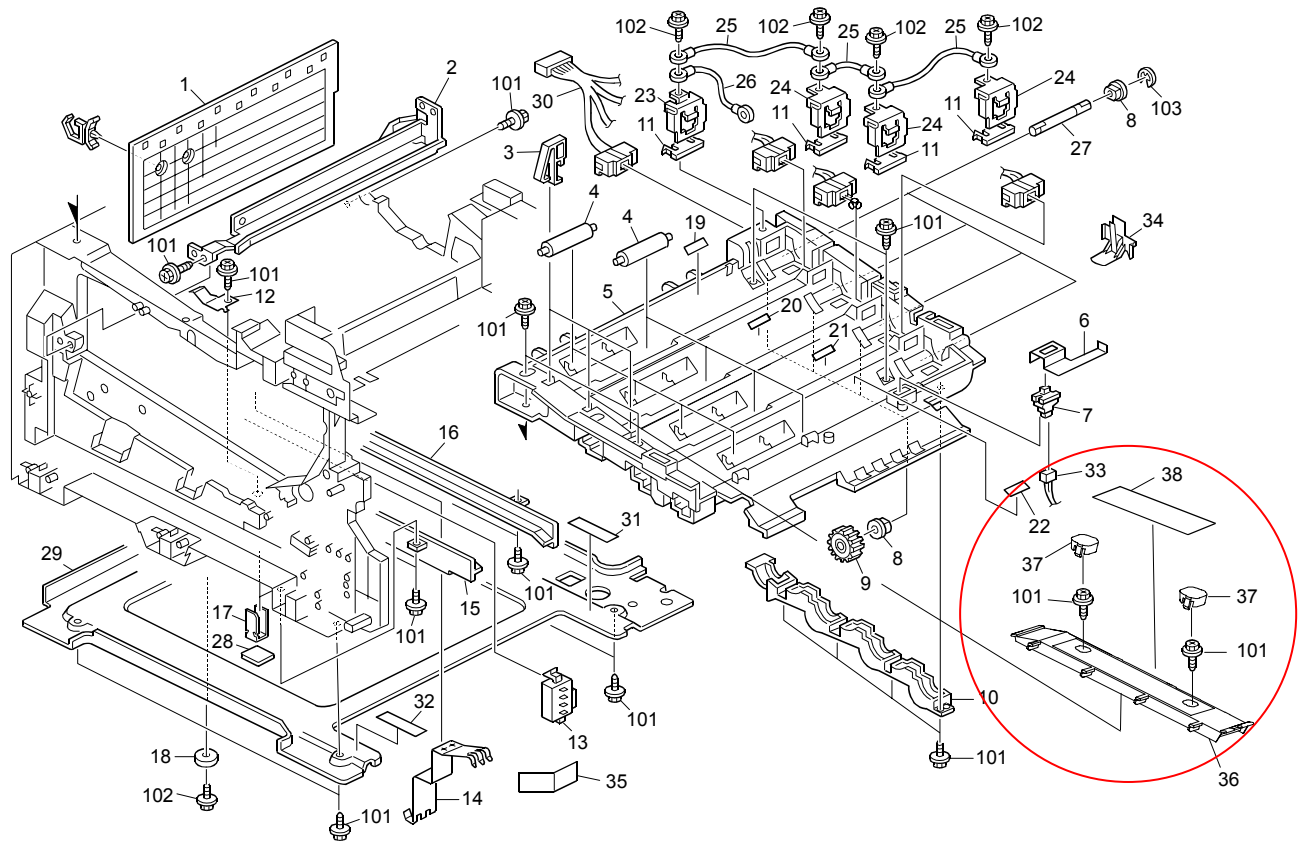
Model: G-P2		Date: 21-Sep-07	No.: MG160005
Modified Article: New part numbers for Model G-P2L		Prepared by: K. Moriizumi	
From: 1st Tech. Support Sec. Service Support Dept.			
Reason for Modification:	<input checked="" type="checkbox"/> Parts catalog correction <input type="checkbox"/> Vendor change <input type="checkbox"/> Other <input type="checkbox"/> To facilitate assembly <input type="checkbox"/> To improve reliability <input type="checkbox"/> To meet standards <input type="checkbox"/> Part standardization <input type="checkbox"/> Product Safety ()		

The new parts have been added for Model G-P2L (Aficio C400DN) as shown below.
The color of the cover for Model G-P2L is different from Model G-P2.

No.	New part number	Description	Q'ty	Page	Index	Note
1	G1581421	REAR EXIT COVER	1	3	3	
2	G1581423	FRONT EXIT COVER	1	3	14	
3	G1581425	STAY:OVERFLOW	1	3	17	
4	G1582720	UPPER GUIDE PLATE - MANUAL FEED	1	5	12	
5	G1582711	LOWER GUIDE PLATE - MANUAL FEED	1	5	24	
6	G1582707	COVER - MANUAL FEED UNIT	1	5	26	
7	G1582701	COVER - MANUAL FEED TABLE	1	5	29	
8	G1582786	PAPER GUIDE	1	5	30	
9	G1582527	PAPER TRAY ASS'Y	1	7	*	
10	G1582811	COVER:PAPER TRAY	1	7	34	
11	G1584513	LEVER: - FRONT COVER	1	11	2	
12	G1580410	PLATE:LOGO:P2L	1	11	19	
13	G1584510	FRONT COVER	1	11	20	
14	G1581401	OPERATION PANEL	1	11	35	
15	G1581210	DECAL:NAME PLATE:RIC:C400DN	1	11	45	
16	G1584512	LEVER - INNER LEFT	1	13	9	
17	G1584511	LEVER - INNER RIGHT	1	13	17	
18	G1587491	SHEET:COLOR_CHART:G-P2L	1	19	7	
19	G1581074	STOPPER:TONER SUPPLY:P2L	1	23	36	1
20	G1581075	COVER:SCREW:P2L	2	23	37	1
21	G1581076	DECAL:OPERATE:TONER SUPPLY:P2L	1	23	38	1
22	G1585123	PCB:EGB-GP2A:ASS'Y	1	37	25	
23	G1585327	PCB:CTL:GAIA-P2L:EXP:SUB-ASS'Y	1	41	4	
24	GA003219	DECAL:OPERATE:MANUAL FEED	1	45	25	
25	GA003217	DECAL:CAUTION:INKJET	1	45	27	
26	GA003218	DECAL:PAPER FEED:DISPLAY	1	45	30	
27	GA001045	DECAL:PS:ENERGY-STAR	1	45	*	

Note 1:

The new parts have been added for Model G-P2L. Please refer to the picture on the next page.



Model: G-P2		Date: 6-Dec-07	No.: MG160006
Modified Article: Push SW:Paper Size Sensor		Prepared by: K. Moriizumi	
From: 1st Tech. Support Sec. Service Support Dept.			
Reason for Modification:	<input type="checkbox"/> Parts catalog correction <input checked="" type="checkbox"/> Vendor change <input type="checkbox"/> Other <input type="checkbox"/> To facilitate assembly <input type="checkbox"/> To improve reliability <input type="checkbox"/> To meet standards <input type="checkbox"/> Part standardization <input type="checkbox"/> Product Safety ()		

Old part number	New part number	Description	Q'ty	Int	Page	Index	Note
GW500002	AW500024	Push Switch: Paper Size Sensor	1-1	X/X	23	13	1
G1025465	G1595465	Harness: Option Tray: Drawer	1-1	X/X	41	34	1

Change: The push switch was changed.

Reason: The vendor stopped making the old part.

Note: The interchangeability of these parts as a set is O/O.

Model: G-P2		Date: 29-Jan-08	No.: MG160007
Modified Article: IOB board		Prepared by: K. Moriizumi	
From: 1st Tech. Support Sec. Service Support Dept.			
Reason for Modification:	<input type="checkbox"/> Parts catalog correction <input type="checkbox"/> Vendor change <input type="checkbox"/> Other <input type="checkbox"/> To facilitate assembly <input type="checkbox"/> To improve reliability <input type="checkbox"/> To meet standards <input checked="" type="checkbox"/> Part standardization <input type="checkbox"/> Product Safety ()		

Old part number	New part number	Description	Q'ty	Int	Page	Index	Note
G1595150	G1905150	PCB: IOB-GP2	1-1	O/O	41	14	

Reason: Part standardization

Model: G-P2		Date: 29-Jan-08	No.: MG160008
Modified Article: PSU - EU/Asia		Prepared by: K. Moriizumi	
From: 1st Tech. Support Sec. Service Support Dept.			
Reason for Modification:	<input type="checkbox"/> Parts catalog correction <input type="checkbox"/> Vendor change <input type="checkbox"/> Other <input type="checkbox"/> To facilitate assembly <input type="checkbox"/> To improve reliability <input type="checkbox"/> To meet standards <input checked="" type="checkbox"/> Part standardization <input type="checkbox"/> Product Safety ()		

Old part number	New part number	Description	Q'ty	Int	Page	Index	Note
GZ230029	GZ230041	Power Supply Unit: EU/Asia	1-1	O/O	39	5	

Reason: Part standardization

Model: G-P2		Date: 29-Jan-08	No.: MG160009
Modified Article: Power Supply Cord		Prepared by: K. Moriizumi	
From: 1st Tech. Support Sec. Service Support Dept.			
Reason for Modification:	<input type="checkbox"/> Parts catalog correction <input type="checkbox"/> Vendor change <input type="checkbox"/> Other <input type="checkbox"/> To facilitate assembly <input type="checkbox"/> To improve reliability <input type="checkbox"/> To meet standards <input checked="" type="checkbox"/> Part standardization <input type="checkbox"/> Product Safety ()		

Old part number	New part number	Description	Q'ty	Int	Page	Index	Note
G1025501	G1905501	Power Supply Cord: NA	1-1	O/O	39	1	
G1025502	G1905502	Power Supply Cord: EU	1-1	O/O	39	1	

Reason: Part standardization

Model: G-P2		Date: 8-Feb-08	No.: MG160010
Modified Article: EGB board		Prepared by: K. Moriizumi	
From: 1st Tech. Support Sec. Service Support Dept.			
Reason for Modification:	<input type="checkbox"/> Parts catalog correction <input type="checkbox"/> Vendor change <input type="checkbox"/> Other <input checked="" type="checkbox"/> To facilitate assembly <input type="checkbox"/> To improve reliability <input type="checkbox"/> To meet standards <input type="checkbox"/> Part standardization <input type="checkbox"/> Product Safety ()		

Old part number	New part number	Description	Q'ty	Int	Page	Index	Note
G1585121	G1585123	PCB: EGB-GP2A: Ass'y	1-1	O/O	37	25	
G1595121	G1595123	PCB: EGB-GP2: Ass'y	1-1	O/O	37	25	

Change: The printed circuit pattern was changed (the jumper wire was deleted).

Reason: To facilitate assembly.

Model: Model G-P2		Date: 8-May-08	No.: MG160011
Modified Article: DDR-DIMM		Prepared by: K. Moriizumi	
From: 1st Tech. Support Sec. Service Support Dept.			
Reason for Modification:	<input type="checkbox"/> Parts catalog correction <input checked="" type="checkbox"/> Vendor change <input type="checkbox"/> Other <input type="checkbox"/> To facilitate assembly <input type="checkbox"/> To improve reliability <input type="checkbox"/> To meet standards <input checked="" type="checkbox"/> Part standardization <input type="checkbox"/> Product Safety ()		

Old part number	New part number	Description	Q'ty	Int	Page	Index	Note
B5845030	B5845050	PCB: DDR-DIMM: 128MB: Ass'y	1-1	O/O	41	18	
B5855030	B5855040	PCB: DDR-DIMM: 256MB: Ass'y	1-1	O/O	41	18	

Change/Reason: Vendor change.

Model: Model G-P2		Date: 8-May-08	No.: MG160012
Modified Article: Logo Plate		Prepared by: K. Moriizumi	
From: 1st Tech. Support Sec. Service Support Dept.			
Reason for Modification:	<input type="checkbox"/> Parts catalog correction <input type="checkbox"/> Vendor change <input type="checkbox"/> Other <input type="checkbox"/> To facilitate assembly <input type="checkbox"/> To improve reliability <input type="checkbox"/> To meet standards <input checked="" type="checkbox"/> Part standardization <input type="checkbox"/> Product Safety ()		

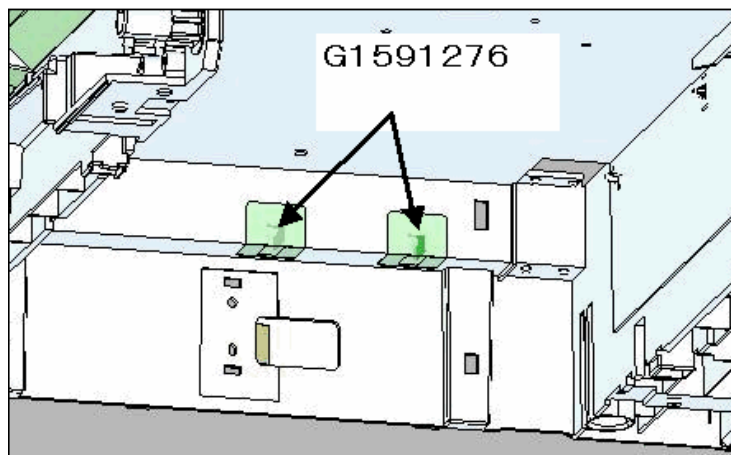
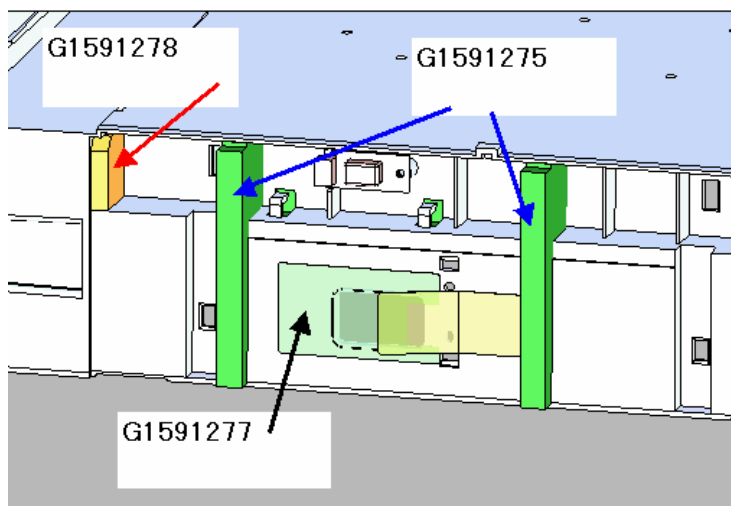
Old part number	New part number	Description	Q'ty	Int	Page	Index	Note
G1392690	J0071510	Plate – Logo: Ric	1-1	O/O	11	19	
GA001052	J0071511	Plate – Logo: GES	1-1	O/O	11	19	
GA001053	J0071512	Plate – Logo: NSA	1-1	O/O	11	19	
GA001054	J0071513	Plate – Logo: REX	1-1	O/O	11	19	

Change/Reason: Parts standardization.

Model: Model G-P2		Date: 8-May-08	No.: MG160013
Modified Article: Seals		Prepared by: K. Moriizumi	
From: 1st Tech. Support Sec. Service Support Dept.			
Reason for Modification:	<input checked="" type="checkbox"/> Parts catalog correction <input type="checkbox"/> Vendor change <input type="checkbox"/> Other <input type="checkbox"/> To facilitate assembly <input type="checkbox"/> To improve reliability <input type="checkbox"/> To meet standards <input type="checkbox"/> Part standardization <input type="checkbox"/> Product Safety ()		

Old part number	New part number	Description	Q'ty	Int	Page	Index	Note
-	G1591275	Seal: Sponge: Paper Size Sensor	2	O/O	41		
-	G1591276	Seal: Temperature & Humidity Sensor	2	O/O	41		
-	G1591277	Seal: Paper Size Sensor: Main	1-1	O/O	41		
-	G1591278	Seal: Sponge: Paper Size Sensor: Harness	1-1	O/O	41		

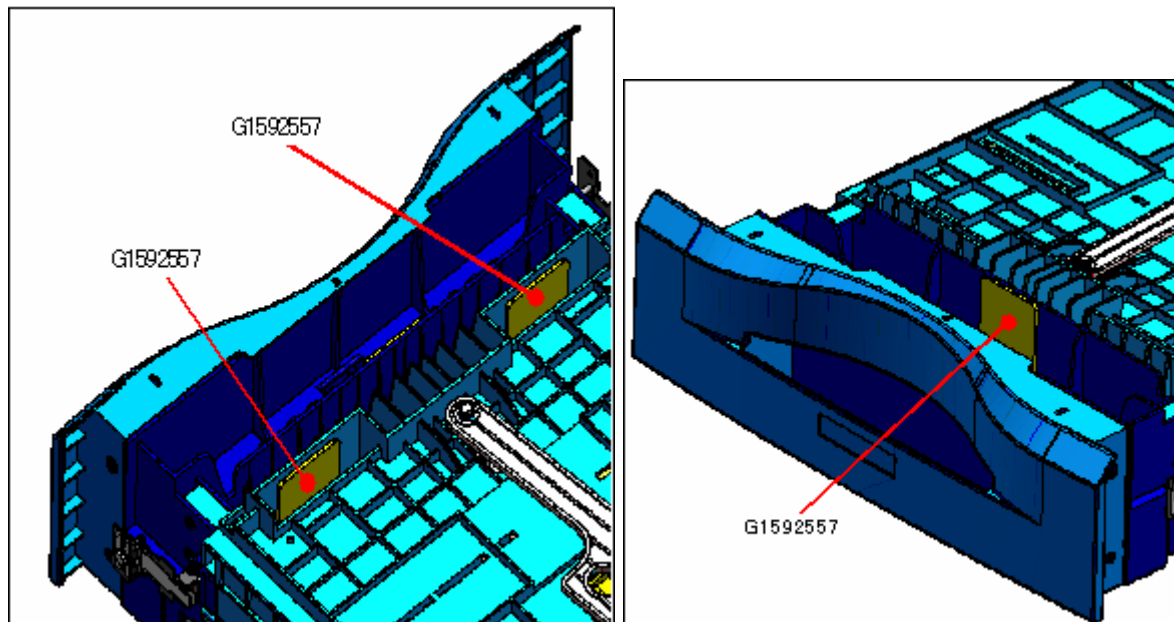
Change/Reason: These parts were missing from the Parts Catalog.



Model: Model G-P2		Date: 8-May-08	No.: MG160014
Modified Article: Plate - Paper Tray		Prepared by: K. Moriizumi	
From: 1st Tech. Support Sec. Service Support Dept.			
Reason for Modification:	<input checked="" type="checkbox"/> Parts catalog correction <input type="checkbox"/> Vendor change <input type="checkbox"/> Other <input type="checkbox"/> To facilitate assembly <input type="checkbox"/> To improve reliability <input type="checkbox"/> To meet standards <input type="checkbox"/> Part standardization <input type="checkbox"/> Product Safety ()		

Old part number	New part number	Description	Q'ty	Int	Page	Index	Note
-	G1592557	Plate: Paper Tray	3	O/O	7		

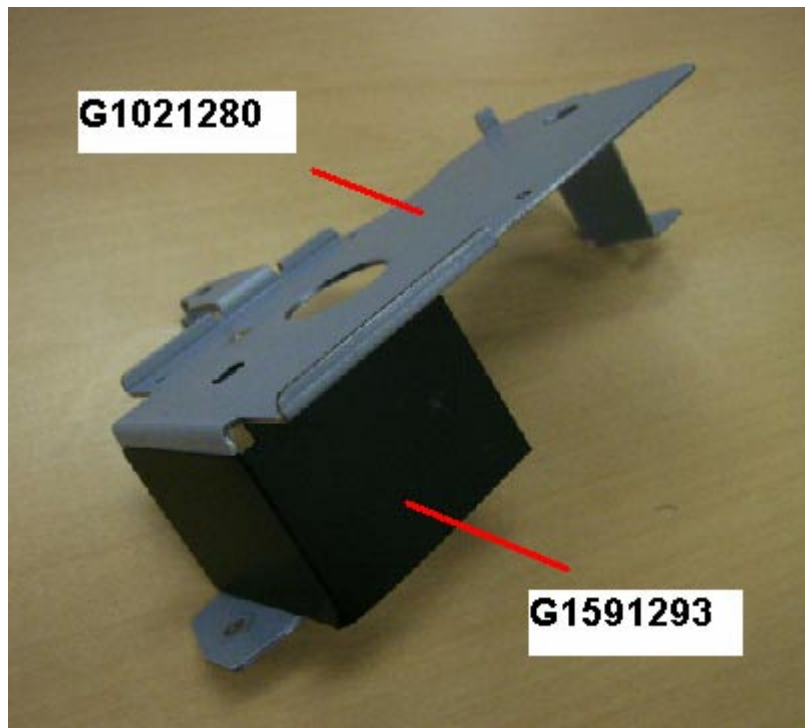
Change/Reason: This part was missing from the Parts Catalog.



Model: Model G-P2		Date: 8-May-08	No.: MG160015
Modified Article: Cover - Development Drive		Prepared by: K. Moriizumi	
From: 1st Tech. Support Sec. Service Support Dept.			
Reason for Modification:	<input checked="" type="checkbox"/> Parts catalog correction <input type="checkbox"/> Vendor change <input type="checkbox"/> Other <input type="checkbox"/> To facilitate assembly <input type="checkbox"/> To improve reliability <input type="checkbox"/> To meet standards <input type="checkbox"/> Part standardization <input type="checkbox"/> Product Safety ()		

Old part number	New part number	Description	Q'ty	Int	Page	Index	Note
-	G1591293	Cover: Development: Drive	1	O/O	36		

Change/Reason: This part was missing from the Parts Catalog.



Model: Model G-P2		Date: 8-May-08	No.: MG160016
Modified Article: Energy Star Decal		Prepared by: K. Moriizumi	
From: 1st Tech. Support Sec. Service Support Dept.			
Reason for Modification:	<input type="checkbox"/> Parts catalog correction <input type="checkbox"/> Vendor change <input type="checkbox"/> Other <input type="checkbox"/> To facilitate assembly <input type="checkbox"/> To improve reliability <input checked="" type="checkbox"/> To meet standards <input type="checkbox"/> Part standardization <input type="checkbox"/> Product Safety ()		

Old part number	New part number	Description	Q'ty	Int	Page	Index	Note
-	AA001477	Decal: Energy Star	1	O/O	45		

Change: The Energy Star decal was added.

Reason: Compliance with the "Energy Star" requirements.

Model: Model G-P2		Date: 3-Jun-08	No.: MG160017
Modified Article: Fusing Decal		Prepared by: K. Moriizumi	
From: 1st Tech. Support Sec. Service Support Dept.			
Reason for Modification:	<input type="checkbox"/> Parts catalog correction <input checked="" type="checkbox"/> Vendor change <input type="checkbox"/> Other <input type="checkbox"/> To facilitate assembly <input type="checkbox"/> To improve reliability <input type="checkbox"/> To meet standards <input type="checkbox"/> Part standardization <input type="checkbox"/> Product Safety ()		

Old part number	New part number	Description	Q'ty	Int	Page	Index	Note
GA000041	GA003241	Decal: High Temperature	1-1	O/O	45	3	
GA000042	GA003242	Decal: High Temperature	1-1	O/O	45	4	
GA003112	GA003243	Decal: Fusing: Open and Close	1-1	O/O	45	14	
GA003119	GA003244	Decal: Fusing	1-1	O/O	45	18	
G1584052	G1584054	Fusing Unit: G-P2A: EU	1-1	O/O	19	4	

Change/Reason: Vendor change.

Model: Model G-P2		Date: 3-Jun-08	No.: MG160018
Modified Article: Harness		Prepared by: K. Moriizumi	
From: 1st Tech. Support Sec. Service Support Dept.			
Reason for Modification:	<input type="checkbox"/> Parts catalog correction <input type="checkbox"/> Vendor change <input checked="" type="checkbox"/> Other <input type="checkbox"/> To facilitate assembly <input type="checkbox"/> To improve reliability <input type="checkbox"/> To meet standards <input checked="" type="checkbox"/> Part standardization <input type="checkbox"/> Product Safety ()		

Old part number	New part number	Description	Q'ty	Int	Page	Index	Note
G1021224	G1901224	Drive Unit: Ass's	1-1	O/O	33	10	
G1025435	G1905435	Harness: Power Supply Unit	1-1	O/O	39	6	
G1025436	G1905436	Harness: IOB-PSU: Connecting: +24V	1-1	O/O	41	33	
G1025438	G1905438	Harness: EGB-PSU: Control	1-1	O/O	37	34	
G1024539	G1905439	Harness: EGB-HVP1	1-1	O/O	37	22	
G1025440	G1905440	Harness: EGB-HVP2	1-1	O/O	37	35	
G1025447	G1905447	Harness: IL-SW: On-Off: Ass'y	1-1	O/O	41	40	
G1025452	G1905452	Harness: Paper Feed: Magnetic Clutch	1-1	O/O	41	29	
G1025453	G1905453	Harness: Paper Feed: Sensor	1-1	O/O	9 41	23 28	
G1025458	G1905458	Harness: Duplex: Motor: Connecting	1-1	O/O	11	29	
G1025461	G1905461	Harness: Duplex: Manual Feed	1-1	O/O	5	35	
G1025466	G1905466	Harness: Temperature/Humidity Sensor	1-1	O/O	41	35	
G1025474	G1905474	Harness: Motor: Toner Supply	1-1	O/O	41	37	
G1025476	G1905476	Harness: Toner End Sensor	1-1	O/O	41	38	
G1025477	G1905477	Harness: Exit: Cover: Sensor	1-1	O/O	23 41	33 41	
G1025495	G1905495	Harness: Duplex: Sensor: Connecting	1-1	O/O	41	39	
G1025498	G1905498	Harness: Duplex: Connecting	1-1	O/O	13	21	
G1025499	G1905499	Harness: Fusing: Drawer	1-1	O/O	9 27	22 35	
G1025535	G1905535	Harness: Front: Cover: Sensor	1-1	O/O	15	27	
G1025538	G1905538	Harness: Drive: Unit: Sensor	1-1	O/O	33 41	19 36	
G1595456	G1905456	Harness: Exit: Sensor	1-1	O/O	29	33	
G1595460	G1905460	Harness: Duplex: Front Door: Connecting	1-1	O/O	41	31	
G1595463	G1905463	Harness: Duplex: OPU: Connecting	1-1	O/O	11	34	
G1595465	G1905465	Harness: Option Tray: Drawer	1-1	O/O	41	34	
G1595468	G1905468	Harness: Drive: Motor: Photoconductor	1-1	O/O	33 41	21 30	

Change: The material of the wire covering was strengthened.

Reason: Parts standardization.


Model: Model G-P2		Date: 14-Jul-08	No.: MG160019
Modified Article: Hot Riller - Fusing Unit		Prepared by: K. Moriizumi	
From: 1st Tech. Support Sec. Service Support Dept.			
Reason for Modification:	<input type="checkbox"/> Parts catalog correction <input type="checkbox"/> Vendor change <input type="checkbox"/> Other <input type="checkbox"/> To facilitate assembly <input checked="" type="checkbox"/> To improve reliability <input type="checkbox"/> To meet standards <input type="checkbox"/> Part standardization <input type="checkbox"/> Product Safety ()		

Old part number	New part number	Description	Q'ty	Int	Page	Index	Note
GE010001	GE010006	Hot Roller : DIA20	1 - 1	O/O	25	26	

Change: The coating on the inside surface of the hot roller was changed.

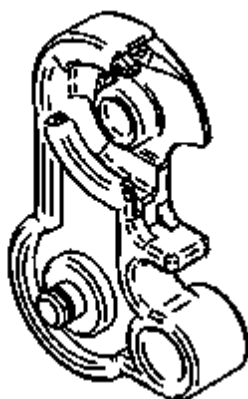
Reason: To further reduce environmental impact.

Model: Model G-P2		Date: 26-Aug-08	No.: MG160020
Modified Article: Releas lever - Fusing Unit		Prepared by: K. Moriizumi	
From: 1st Tech. Support Sec. Service Support Dept.			
Reason for Modification:	<input checked="" type="checkbox"/> Parts catalog correction <input type="checkbox"/> Vendor change <input type="checkbox"/> Other <input type="checkbox"/> To facilitate assembly <input type="checkbox"/> To improve reliability <input type="checkbox"/> To meet standards <input type="checkbox"/> Part standardization <input type="checkbox"/> Product Safety ()		

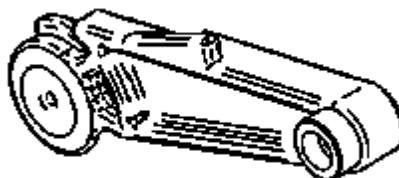
Old part number	New part number	Description	Q'ty	Int	Page	Index	Note
 -	G1024204	Lever:Pressure Release:Left:Lower	0 - 1	-	25		
-	G1024206	Lever:Pressure Release:Left:Upper	0 - 1	-	25		
-	G1022408	Torsion Spring:Pressure Release:Left	0 - 1	-	25		
-	G1024224	Lever:Pressure Release:Right:Lower	0 - 1	-	25		
-	G1022426	Lever:Pressure Release:Right:Upper	0 - 1	-	25		
-	G1022408	Torsion Spring:Pressure Release:Right	0 - 1	-	25		

Change/Reason: These parts were missing from the Parts Catalog.

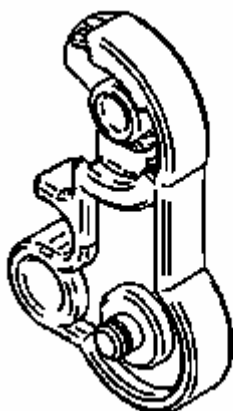
G1024204



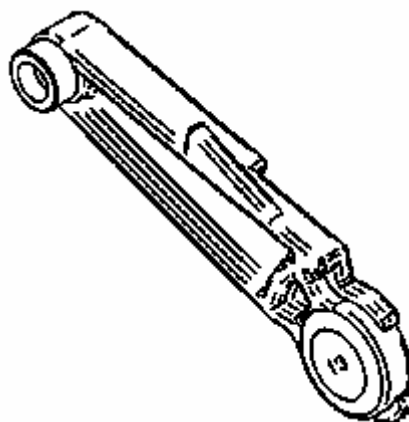
G1024206



G1024224



G1024226



Model: Model G-P2		Date: 22-Sep-08	No.: MG160021									
Modified Article: LD Unit		Prepared by: K. Moriizumi										
From: 1st Tech. Support Sec. Service Support Dept.												
Reason for Modification:	<table><tr><td><input type="checkbox"/> Parts catalog correction</td><td><input type="checkbox"/> Vendor change</td><td><input type="checkbox"/> Other</td></tr><tr><td><input type="checkbox"/> To facilitate assembly</td><td><input type="checkbox"/> To improve reliability</td><td><input type="checkbox"/> To meet standards</td></tr><tr><td><input checked="" type="checkbox"/> Part standardization</td><td><input type="checkbox"/> Product Safety</td><td>()</td></tr></table>			<input type="checkbox"/> Parts catalog correction	<input type="checkbox"/> Vendor change	<input type="checkbox"/> Other	<input type="checkbox"/> To facilitate assembly	<input type="checkbox"/> To improve reliability	<input type="checkbox"/> To meet standards	<input checked="" type="checkbox"/> Part standardization	<input type="checkbox"/> Product Safety	()
<input type="checkbox"/> Parts catalog correction	<input type="checkbox"/> Vendor change	<input type="checkbox"/> Other										
<input type="checkbox"/> To facilitate assembly	<input type="checkbox"/> To improve reliability	<input type="checkbox"/> To meet standards										
<input checked="" type="checkbox"/> Part standardization	<input type="checkbox"/> Product Safety	()										

Old part number	New part number	Description	Q'ty	Int	Page	Index	Note
G1021955	G1591955	Laser Diode Unit: Ass'y	1 - 1	O/O	17	9	

Change/Reason: Part standardization with the model G-P3.

Model: Model G-P2		Date: 9-Oct-08	No.: MG160022
Modified Article: Stepper Motor: Drive Unit		Prepared by: K. Moriizumi	
From: 1st Tech. Support Sec. Service Support Dept.			
Reason for Modification:	<input type="checkbox"/> Parts catalog correction <input checked="" type="checkbox"/> Vendor change <input type="checkbox"/> Other <input type="checkbox"/> To facilitate assembly <input type="checkbox"/> To improve reliability <input type="checkbox"/> To meet standards <input type="checkbox"/> Part standardization <input type="checkbox"/> Product Safety ()		

Old part number	New part number	Description	Q'ty	Int	Page	Index	Note
G1591345	G1901345	Stepper Motor:DC24V:16.8W	1 - 1	O/O	33	18	

Change: The specifications (accuracy of the dimensions) of the gear were changed.

Reason: To improve the reliability of the gear.

Reissued: 29-Oct-08

Model: Model G-P2	Date: 26-Aug-08	No.: MG160020a
-------------------	-----------------	----------------

MB Reissue

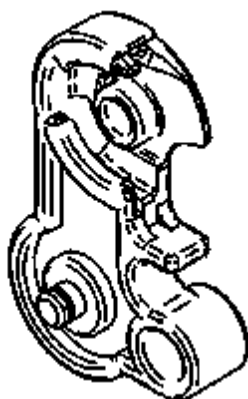
The items with a line drawn through them have been corrected.

Modified Article: Releas lever - Fusing Unit		Prepared by: K. Moriizumi	
From: 1st Tech. Support Sec. Service Support Dept.			
Reason for Modification:	<input checked="" type="checkbox"/> Parts catalog correction <input type="checkbox"/> Vendor change <input type="checkbox"/> Other <input type="checkbox"/> To facilitate assembly <input type="checkbox"/> To improve reliability <input type="checkbox"/> To meet standards <input type="checkbox"/> Part standardization <input type="checkbox"/> Product Safety ()		

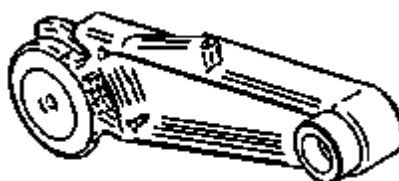
Old part number	New part number	Description	Q'ty	Int	Page	Index	Note
-	G1024204	Lever:Pressure Release:Left:Lower	0 - 1	-	25		
-	G1024206	Lever:Pressure Release:Left:Upper	0 - 1	-	25		
-	G1022408 G1024208	Torsion Spring:Pressure Release:Left	0 - 1	-	25		
-	G1024224	Lever:Pressure Release:Right:Lower	0 - 1	-	25		
-	G1022426 G1024226	Lever:Pressure Release:Right:Upper	0 - 1	-	25		
-	G1022408 G1024228	Torsion Spring:Pressure Release:Right	0 - 1	-	25		

Change/Reason: These parts were missing from the Parts Catalog.

G1024204



G1024206



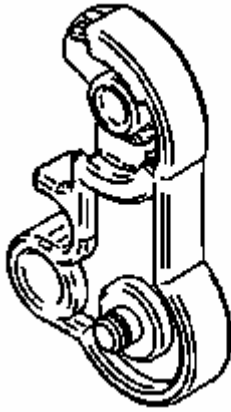
Reissued: 29-Oct-08

Model: Model G-P2

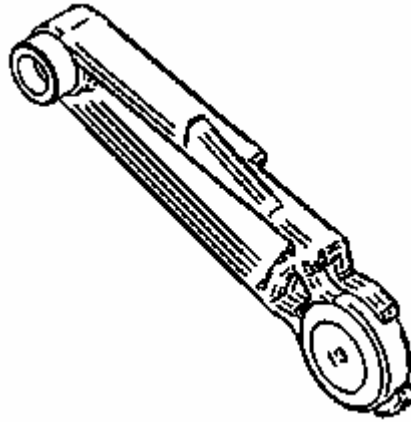
Date: 26-Aug-08

No.: MG160020a

G1024224



G1024226





Part Change Information List

Date: March 18, 2009

Model	Code	PCIL Number	PCIL Correction	Old part number	New part number	Description	Old Q'ty	New Q'ty	Int	3DPC	Page	Index	Set	Set Int	RTB	Note	Ref Number
Model G-P2	G160	200903		B5845030	B5845031	PCB:DDR-DIMM:128MB:ASS'Y	1	1	X/O		41	18					V0803454



Part Change Information List

Date: September 30, 2009

Model	Code	PCIL Nr.	PCIL Correction	Old part number	New part number	Description	Old Q'ty	New Q'ty	Int	3DPC	Page	Index	Set	Set Int	RTB	Note	Ref. Nr.	ECN Nr.
G-P2	G102	200909		G1905499	G1025413	HARNESS:POWER SUPPLY UNIT:HEATER	1	1	O/O		9	22						
G-P2	G102	200909		G1905499	G1025414	HARNESS:POWER SUPPLY UNIT:HEATER	1	1	O/O		9	22						
G-P2	G102	200909		G1025413	G1905499	HARNESS:FUSING:DRAWER	1	1	O/O		9	28						
G-P2	G102	200909		G1025414	G1905499	HARNESS:FUSING:DRAWER	1	1	O/O		9	28						



Part Change Information List

Date: June 30, 2011

Model	Code	PCIL Nr.	PCIL Correction	Old part number	New part number	Description	Old Q'ty	New Q'ty	Int	3DPC	Page	Index	Set	Set Int	RTB	Note	Ref. Nr.	ECN Nr.
G-P2	G160	201105		AA082101	AA082118	BUSHING - M6	22	8	X/O		11	6					V1100977	11041465
G-P2	G158	201105		AA082101	AA082118	BUSHING - M6	22	8	X/O		11	6					V1100977	11041465



Part Change Information List

Date: February 28, 2014

Model	Code	PCIL Number	PCIL Correction	Old part number	New part number	Description	Old Q'ty	New Q'ty	Int	3DPC	Page	Index	Set	Set Int	RTB	Note	Ref Number	ECN Number
G-P2L	G158	201310		G1022809	G1902904	PAPER VOLUME SENSOR BOARD:BASE:ADHESION	1	1	X/O		7	15			RG190020		V1302509	13061782
G-P2	G160	201310		G1022809	G1902904	PAPER VOLUME SENSOR BOARD:BASE:ADHESION	1	1	X/O		7	15			RG190020		V1302509	13061782
G-P2	G160	201310		G1592527	G1592528	PAPER TRAY:ASS'Y	1	1	X/O		7	*			RG190020		V1302509	13061782



Part Change Information List

Date: February 28, 2014

Model	Code	PCIL Number	PCIL Correction	Old part number	New part number	Description	Old Q'ty	New Q'ty	Int	3DPC	Page	Index	Set	Set Int	RTB	Note	Ref Number	ECN Number
Model G-P1, Model G-P2	G104/G105	201402		G2352034	G2352037	PCU:GAIA-P1K:M:ASS'Y	1	1	O/O		18	1					V1302788	13060692
Model G-P1, Model G-P2	G104/G105	201402		G2352036	G2352039	PCU:GAIA-P1K:Y:ASS'Y	1	1	O/O		18	3					V1302788	13060692



Part Change Information List

Date: April 30, 2014

Model	Code	PCIL Number	PCIL Correction	Old part number	New part number	Description	Old Q'ty	New Q'ty	Int	3DPC	Page	Index	Set	Set Int	RTB	Note	Ref Number	ECN Number
G-P2L	G158	201404		G2352035	G2352038	PCU:GAIA-P1K:C:ASS'Y	1	1	O/O		19	2					V1302788	13060692
G-P2	G160	201404		G2352035	G2352038	PCU:GAIA-P1K:C:ASS'Y	1	1	O/O		19	2					V1302788	13060692



Part Change Information List

Date: October 4, 2016

Model	Code	PCIL Number	PCIL Correction	Old part number	New part number	Description	Old Q'ty	New Q'ty	Int	3DPC	Page	Index	Set	Set Int	RTB	Note	Ref Number	ECN Number
G-P2L	G158	201609		G1022846	G0292657	COMPRESSION SPRING	1	1	X/O	N	9	18					V1602904	
G-P2	G160	201609		G1022846	G0292657	COMPRESSION SPRING	1	1	X/O	N	9	18					V1602904	



Part Change Information List

Date: September 1, 2017

Model	Code	PCIL Number	PCIL Correction	Old part number	New part number	Description	Old Q'ty	New Q'ty	Int	3DPC	Page	Index	Set	Set Int	RTB	Note	Ref Number	ECN Number
G-P2L	G158	201707		G1592818	M0AM2818	TRAY BOTTOM PLATE:ADHESION	1	1	X/O	N	7	11					V1701159	
G-P2	G160	201707		G1592818	M0AM2818	TRAY BOTTOM PLATE:ADHESION	1	1	X/O	N	7	11					V1701159	
G-P2	G160	201707		G1592528	M0AM2528	PAPER TRAY:ASSY	1	1	X/O	N	7	*					V1701159	