

Model: Model PL-MF		Date: 2-Oct-06	No.: MG157001
Modified Article: Transfer Roller		Prepared by: H.K.	
From: Technical Service Dept., GTS Division			
Reason for Modification:	<input type="checkbox"/> Parts catalog correction <input type="checkbox"/> To facilitate assembly <input type="checkbox"/> Part standardization	<input checked="" type="checkbox"/> Vendor change <input type="checkbox"/> To improve reliability <input type="checkbox"/> Other	<input type="checkbox"/> To meet standards ()

Old part number	New part number	Description	Q'ty	Int	Page	Index	Note
V128488	V128698	TRANSFER ROLLER ASSY PU 1	1	O/O	13	3	

Change: The material of the transfer roller was changed.

Reason: Vendor change

Reissued: 1-Nov-06

Model: Model PL- <i>MF</i>	Date: 30-Oct-06	No.: MG157002a
----------------------------	-----------------	----------------

RTB Reissue

The model name, page index and serial numbers were corrected (in ***bold italics***).

Modified Article: Fusing Unit		Prepared by: H.K.	
From: Technical Service Dept., GTS Division			
Reason for Modification:	<input type="checkbox"/> Parts catalog correction <input type="checkbox"/> To facilitate assembly <input type="checkbox"/> Part standardization	<input type="checkbox"/> Vendor change <input type="checkbox"/> To improve reliability <input type="checkbox"/> Other	<input checked="" type="checkbox"/> To meet standards (RoHS)

Old part number	New part number	Description	Q'ty	Int	Page	Index	Note
V128622	V128699	FUSING UNIT (110V) FU2	1	X/O	3	4	
V128623	V128701	FUSING UNIT (220V) FU2	1	X/O	3	4	

Change:

The materials of the parts in the table were changed.

Reason:

RoHS compliance.

Note: The functions of these parts were not changed.

IMPORTANT:

- The materials for the parts were changed before the part numbers were changed. To make sure the correct parts are used on the correct machines, please handle the parts as follows:

Parts with the **old** P/N:
Parts with the **new** P/N:

Non-RoHS compliant parts
RoHS compliant parts

	RoHS Compliant Parts	Non-RoHS Compliant Parts
RoHS Compliant Machines	OK	<u>DO NOT USE</u>
Non-RoHS Compliant Machines	OK	OK

- Continue using** non-RoHS compliant parts on non-ROHS compliant machines **until the stock of these parts runs out**. Then, start using RoHS compliant parts on the non-RoHS compliant machines.
- DO NOT use** non-RoHS compliant parts on RoHS compliant machines.

Reissued: 1-Nov-06

Model: Model PL- <i>MF</i>	Date: 30-Oct-06	No.: MG157002a
----------------------------	-----------------	----------------

Note: This is to make sure that all machines are in full compliance with the RoHS Directive.

Thailand Production

<i>Model</i>	<i>V/Hz</i>	<i>Destination</i>	<i>Code</i>	<i>Serial Number</i>
<i>RICOH/Savin/Gestetner/Lanier SP C210SF</i>	<i>120V, 60Hz</i>	<i>USA, Canada</i>	<i>G157-17</i>	<i>Q7269100224</i>
<i>RICOH/Lanier SP C210SF</i>	<i>220 - 240V, 50/60Hz</i>	<i>Oceania</i>	<i>G157-23</i>	<i>Q7269100127</i>
<i>RICOH/NRG/Lanier SP C210SF</i>	<i>220 - 240V, 50/60Hz</i>	<i>Europe, etc.</i>	<i>G157-27</i>	<i>Q7268900704</i>
<i>RICOH/Lanier SP C210SF</i>	<i>220 - 240V, 50/60Hz</i>	<i>Asia</i>	<i>G157-29</i>	<i>Q7269100001</i>

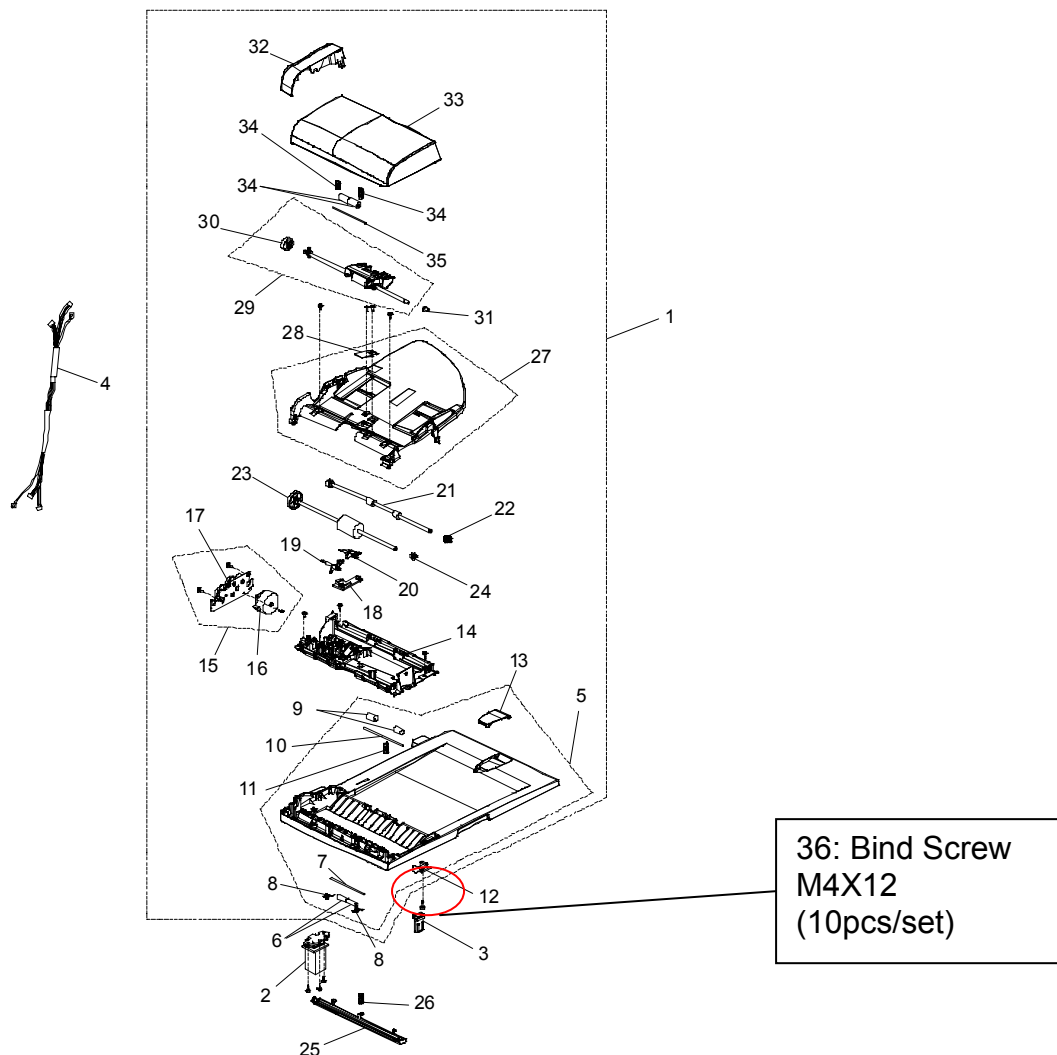
Model: Model PL-MF		Date: 14-Feb-07	No.: MG157003
Modified Article: Bind Screw - M4X12 10pcs/set		Prepared by: H.K.	
From: 1st Tech. Support Sec. Service Support Dept.			
Reason for Modification:	<input checked="" type="checkbox"/> Parts catalog correction <input type="checkbox"/> Vendor change <input type="checkbox"/> Other <input type="checkbox"/> To facilitate assembly <input type="checkbox"/> To improve reliability <input type="checkbox"/> To meet standards () <input type="checkbox"/> Part standardization <input type="checkbox"/> Product Safety		

Old part number	Correct part number	Description	Q'ty	Int	Page	Index	Note
	V121335	BIND M4X12 SP ASSY (10pcs/set)	1		19	*36	

*: New index

Change: This part was added.

Reason: It was missing from the Parts Catalog.



Model: Model PL-MF		Date: 14-Feb-07	No.: MG157004
Modified Article: Shield Cover		Prepared by: H.K.	
From: 1st Tech. Support Sec. Service Support Dept.			
Reason for Modification:	<input checked="" type="checkbox"/> Parts catalog correction <input type="checkbox"/> Vendor change <input type="checkbox"/> Other <input type="checkbox"/> To facilitate assembly <input type="checkbox"/> To improve reliability <input type="checkbox"/> To meet standards <input type="checkbox"/> Part standardization <input type="checkbox"/> Product Safety ()		

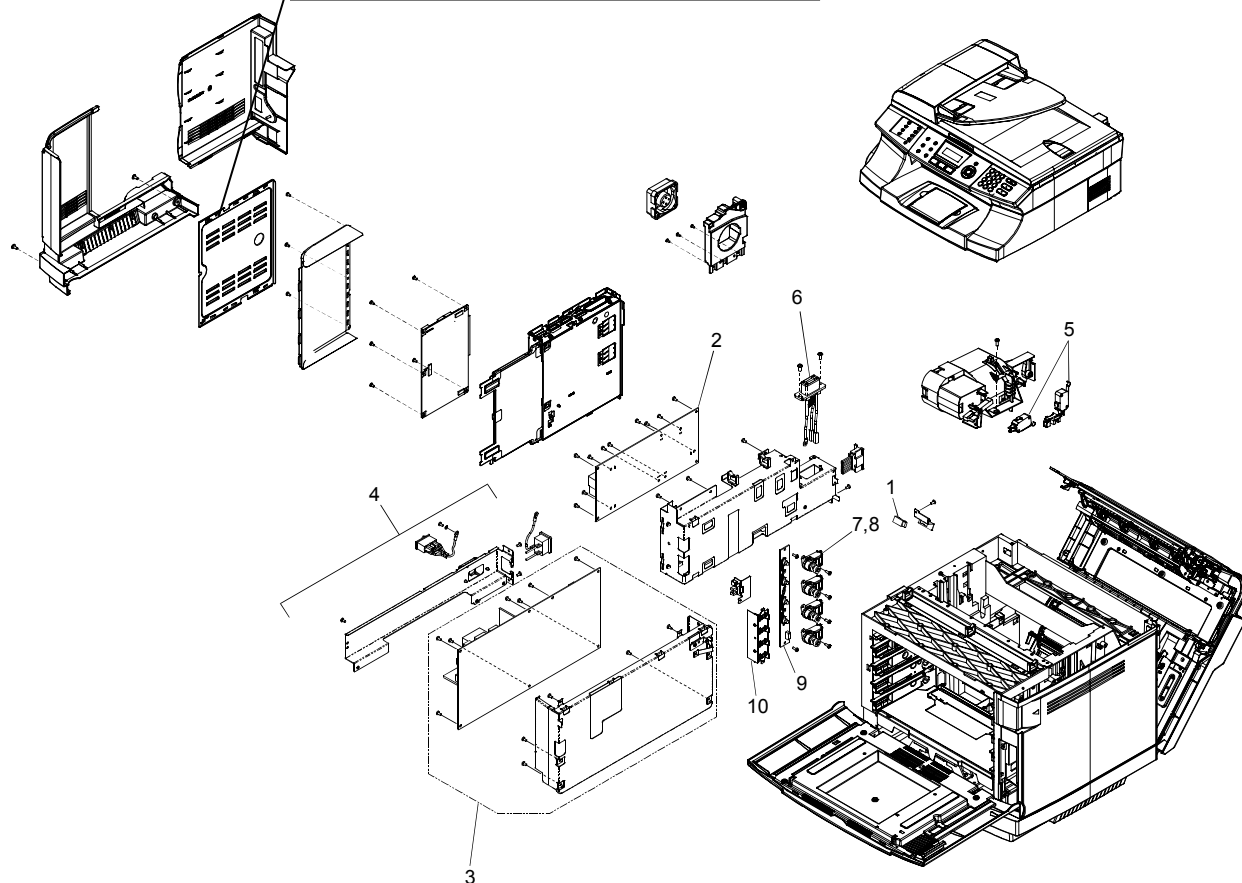
Change: This part was added.

Reason: It was missing from the Parts Catalog.

Old part number	New part number	Description	Q'ty	Int	Page	Index	Note
	V121372	MSL1 SHIELD COVER A	1		7	*11	

11: V121372: MSL1 SHIELD COVER A

*: New index



Model: Model PL-MF		Date: 23-Apr-07	No.: MG157005
Modified Article: Cleaning Roller		Prepared by: H.K.	
From: Technical Service Dept., GTS Division			
Reason for Modification:	<input type="checkbox"/> Parts catalog correction <input type="checkbox"/> To facilitate assembly <input type="checkbox"/> Part standardization	<input type="checkbox"/> Vendor change <input type="checkbox"/> To improve reliability <input checked="" type="checkbox"/> Other	<input type="checkbox"/> To meet standards ()

Old part number	New part number	Description	Q'ty	Int	Page	Index	Note
V128404	V128696	CLEANING ROLLER PU 1	1	O/O	3	2	

Change: The material used for the brush on the Cleaning Roller was changed from rayon to nylon.

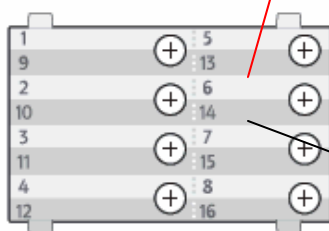
Reason: The vendor stopped production of the rayon brush.

Model: Model PL-MF		Date: 15-May-07	No.: MG157006
Modified Article: Operation Panel Sheet		Prepared by: H.K.	
From: 1st Tech. Support Sec. Service Support Dept.			
Reason for Modification:	<input checked="" type="checkbox"/> Parts catalog correction <input type="checkbox"/> Vendor change <input type="checkbox"/> Other <input type="checkbox"/> To facilitate assembly <input type="checkbox"/> To improve reliability <input type="checkbox"/> To meet standards <input type="checkbox"/> Part standardization <input type="checkbox"/> Product Safety ()		

Old part number	New part number	Description	Q'ty	Int	Page	Index	Note
	G1575011	OPERATION PANEL SHEET - SPEED DIAL	0 - 1		17	*8	

* New index

The operation panel sheet for speed dial has been registered as a spare part. Please add the part number to your parts catalog.



G1575011: OPERATION PANEL SHEET - SPEED DIAL

Model: Model PL-MF		Date: 17-May-07	No.: MG157007
Modified Article: TR Cam Clutch		Prepared by: H.K.	
From: Technical Service Dept., GTS Division			
Reason for Modification:	<input checked="" type="checkbox"/> Parts catalog correction	<input type="checkbox"/> Vendor change	<input type="checkbox"/> To meet standards ()
	<input type="checkbox"/> To facilitate assembly	<input type="checkbox"/> To improve reliability	
	<input type="checkbox"/> Part standardization	<input type="checkbox"/> Other	

Incorrect part number	Correct part number	Description	Q'ty	Int	Page	Index	Note
V126639	V126788	TR CAM CLUTCH 2PU	1		5	8	

Please correct your parts catalogue as shown.

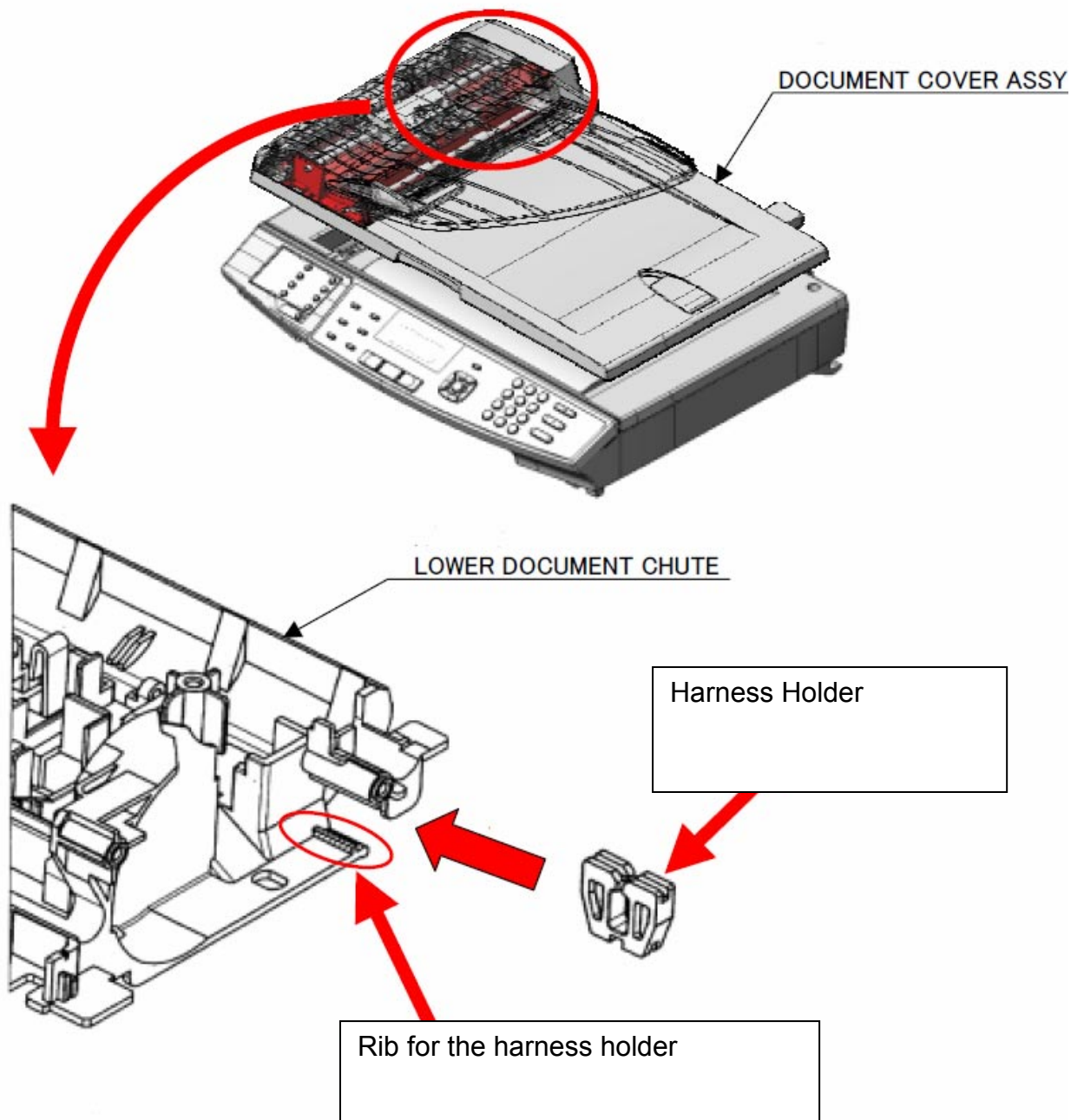
Model: Model PL-MF		Date: 10-Sep-07	No.: MG157008
Modified Article: Document Cover Ass'y		Prepared by: H.K.	
From: 1st Tech. Support Sec. Service Support Dept.			
Reason for Modification:	<input type="checkbox"/> Parts catalog correction <input checked="" type="checkbox"/> To facilitate assembly <input type="checkbox"/> Part standardization	<input type="checkbox"/> Vendor change <input type="checkbox"/> To improve reliability <input type="checkbox"/> Other	<input type="checkbox"/> To meet standards ()

Old part number	New part number	Description	Q'ty	Int	Page	Index	Note
V121300	V121374	DOCUMENT COVER ASS'Y	1	O/O	19	1	
V121310	V121375	LOWER DOCUMENT CHUTE	1	O/O	19	14	
V121345	V121376	ADF HARNESS UNIT ASS'Y	1	O/O	19	4	

Change:

- 1) A harness holder was added to the Lower Document Chute.
- 2) A bind was added to the ADF Harness Unit Ass'y.

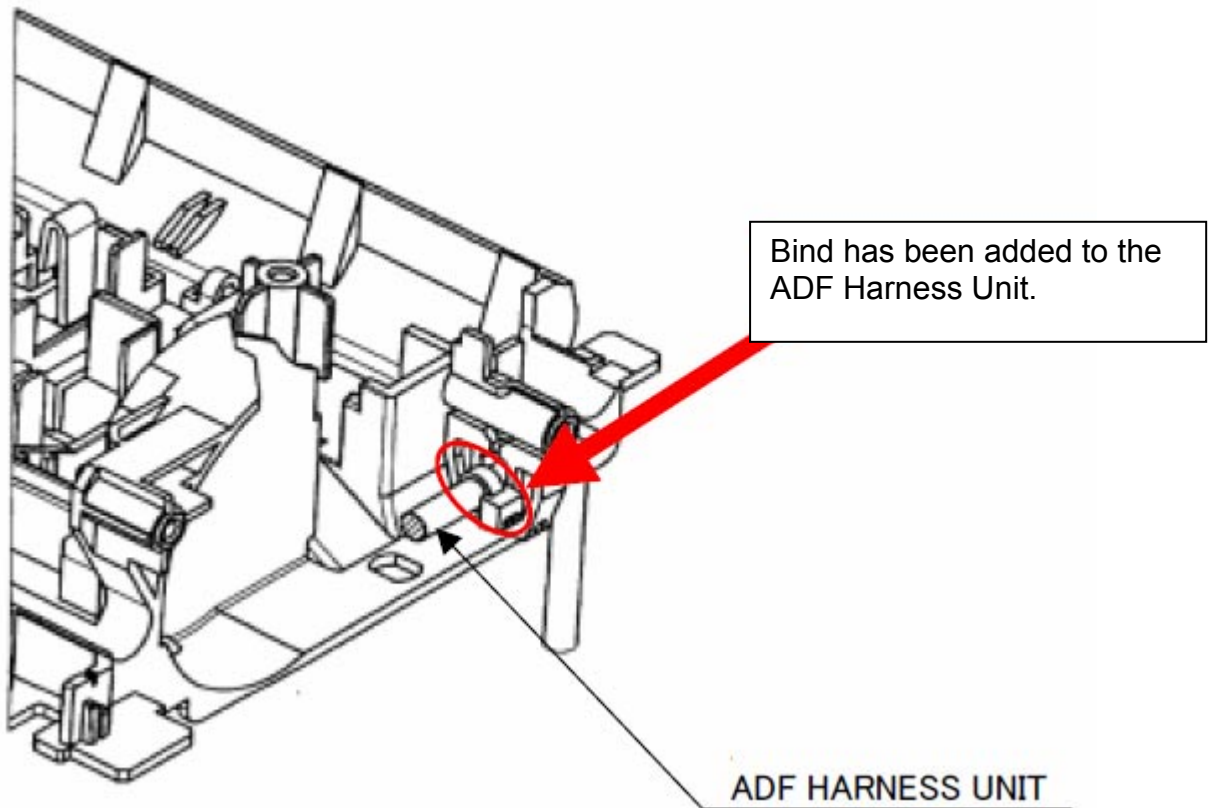
Reason: To further ensure the harnesses stay connected during factory assembly.



Model: Model PL-MF

Date: 10-Sep-07

No.: MG157008



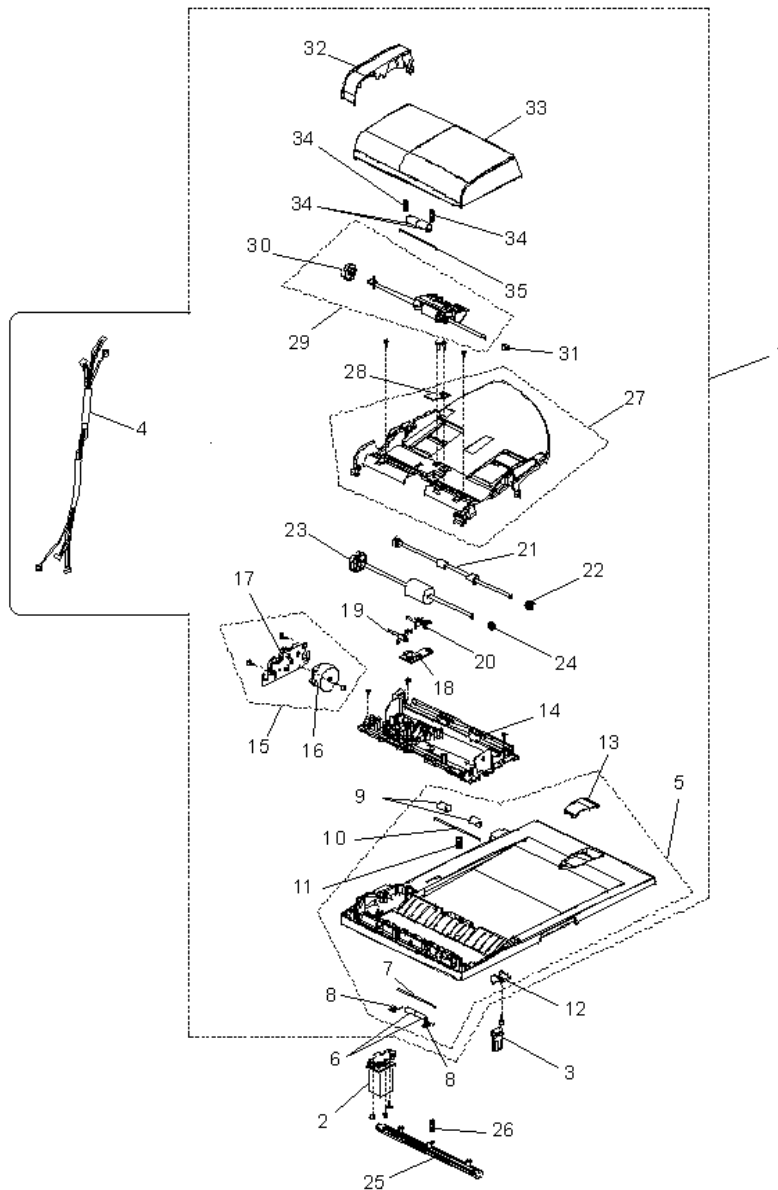
Model: Model PL-MF

Date: 10-Sep-07

No.: MG157008

For illustration correction

ADF Harness Unit Ass'y (4) is included into DOCUMENT COVER ASS'Y (1).



Thailand Production

Model	V/Hz	Destination	Code	Serial Number
RICOH/Savin/Gestetner/Lanier SP C210SF	120V, 60Hz	USA, Canada	G157-17	Q7278800001
RICOH/Lanier SP C210SF	220 - 240V, 50/60Hz	Oceania	G157-23	Q7278800412
RICOH/NRG/Lanier SP C210SF	220 - 240V, 50/60Hz	Europe, etc.	G157-27	Q7278701912
RICOH/Lanier SP C210SF	220 - 240V, 50/60Hz	Asia	G157-29	Q7278800245

Reissued: 19-May-08

Model: Model PL-MF	Date: 22-Oct-07	No.: MG157009a
--------------------	-----------------	----------------

MB Reissue

The items in ***bold italics*** were corrected or added.

Modified Article: Transfer Unit		Prepared by: H.K.	
From: 1st Tech. Support Sec. Service Support Dept.			
Reason for	<input type="checkbox"/> Parts catalog correction	<input checked="" type="checkbox"/> Vendor change	<input type="checkbox"/> Other
Modification:	<input type="checkbox"/> To facilitate assembly	<input type="checkbox"/> To improve reliability	<input type="checkbox"/> To meet standards
	<input type="checkbox"/> Part standardization	<input type="checkbox"/> Product Safety	()

Old part number	New part number	Description	Q'ty	Int	Page	Index	Note
V128463	<i>V128718</i>	TRANSFER UNIT PU 2	1 - 1	O/O	9	1	

Reason & change: Vendor change:

Model: Model PL-MF		Date: 20-Dec-07	No.: MG157010
Modified Article: Reinforcement Plate		Prepared by: H.K.	
From: 1st Tech. Support Sec. Service Support Dept.			
Reason for Modification:	<input type="checkbox"/> Parts catalog correction <input type="checkbox"/> Vendor change <input checked="" type="checkbox"/> Other <input type="checkbox"/> To facilitate assembly <input type="checkbox"/> To improve reliability <input type="checkbox"/> To meet standards <input type="checkbox"/> Part standardization <input type="checkbox"/> Product Safety ()		

Old part number	New part number	Description	Q'ty	Int	Page	Index	Note
V121374	V121377	DOCUMENT COVER ASS'Y 2	1 - 1	X/O	19	1	
V121301	V121378	DOCUMENT COVER SUB 2	1 - 1	X/O	19	5	
	V121379	REINFORCEMENT PLATE A&B WITH SCREW	0 - 1		19	*36	

*: New index

Reason & Change

For details, please refer to RTB No. RG157003b.

Thailand Production

Model	V/Hz	Destination	Code	Serial Number
RICOH/Savin/Gestetner/Lanier SP C210SF	120V, 60Hz	USA, Canada	G157-17	Q72791XXXXX
RICOH/Lanier SP C210SF	220 - 240V, 50/60Hz	Oceania	G157-23	Q72791XXXXX
RICOH/NRG/Lanier SP C210SF	220 - 240V, 50/60Hz	Europe, etc.	G157-27	Q72791XXXXX
RICOH/Lanier SP C210SF	220 - 240V, 50/60Hz	Asia	G157-29	Q72791XXXXX

Model: Model PL-MF		Date: 20-Dec-07	No.: MG157011
Modified Article: Regist Ground Spring		Prepared by: H.K.	
From: 1st Tech. Support Sec. Service Support Dept.			
Reason for Modification:	<input type="checkbox"/> Parts catalog correction <input type="checkbox"/> Vendor change <input checked="" type="checkbox"/> Other <input type="checkbox"/> To facilitate assembly <input type="checkbox"/> To improve reliability <input type="checkbox"/> To meet standards <input type="checkbox"/> Part standardization <input type="checkbox"/> Product Safety ()		

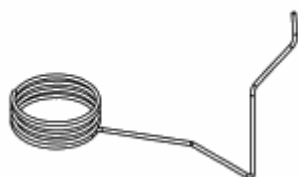
Old part number	New part number	Description	Q'ty	Int	Page	Index	Note
	V121382	REGIST GROUND SRING	0 - 1		9	*17	

*:New index

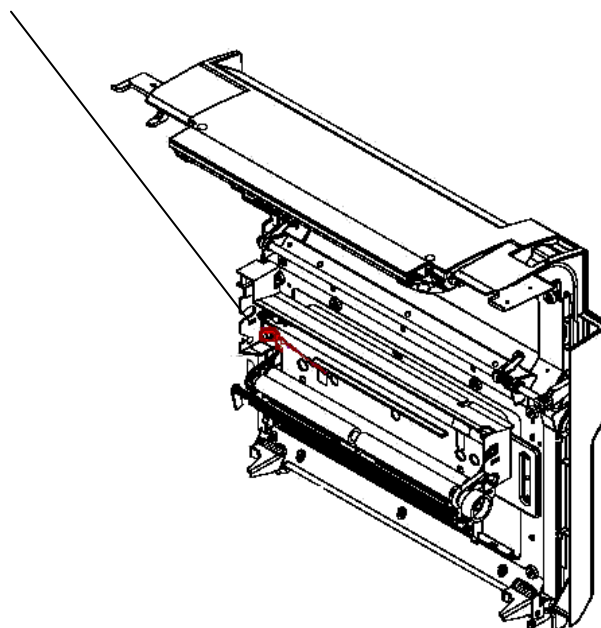
Change: The part in the table was added.

Reason: Requests were received from the field.

Important: Handle this spring carefully. Make sure not to deform or bend the spring, as this can cause jams, noise, or poor image transfer.



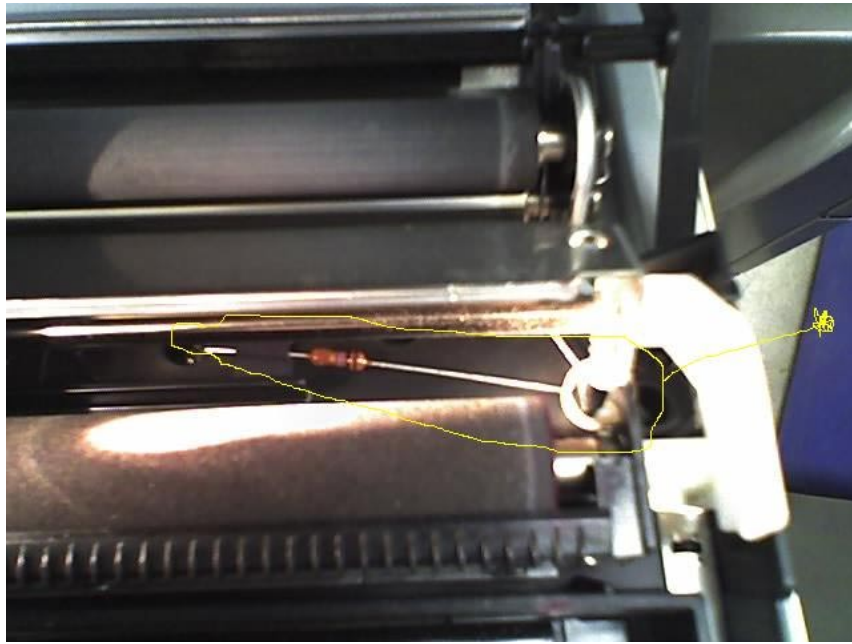
REGIST GROUND SRING



Model: Model PL-MF

Date: 20-Dec-07

No.: MG157011

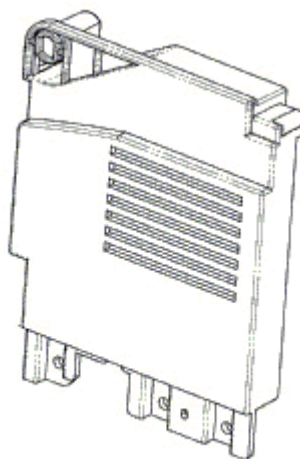
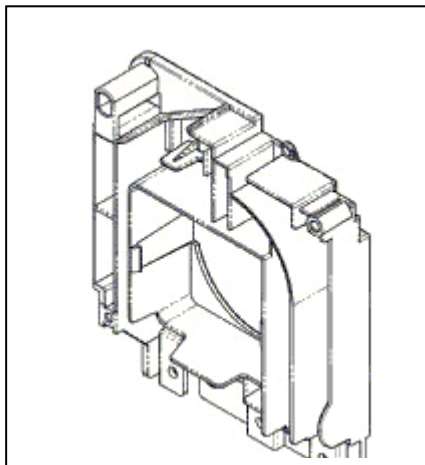


Model: Model PL-MF		Date: 20-Dec-07	No.: MG157012
Modified Article: SC Base Hinge		Prepared by: H.K.	
From: 1st Tech. Support Sec. Service Support Dept.			
Reason for Modification:	<input type="checkbox"/> Parts catalog correction <input type="checkbox"/> Vendor change <input checked="" type="checkbox"/> Other <input type="checkbox"/> To facilitate assembly <input type="checkbox"/> To improve reliability <input type="checkbox"/> To meet standards <input type="checkbox"/> Part standardization <input type="checkbox"/> Product Safety ()		

Old part number	New part number	Description	Q'ty	Int	Page	Index	Note
	V121380	MSL1 SC BASE L/R KIT	0 – 1		7	*14	

*: New index

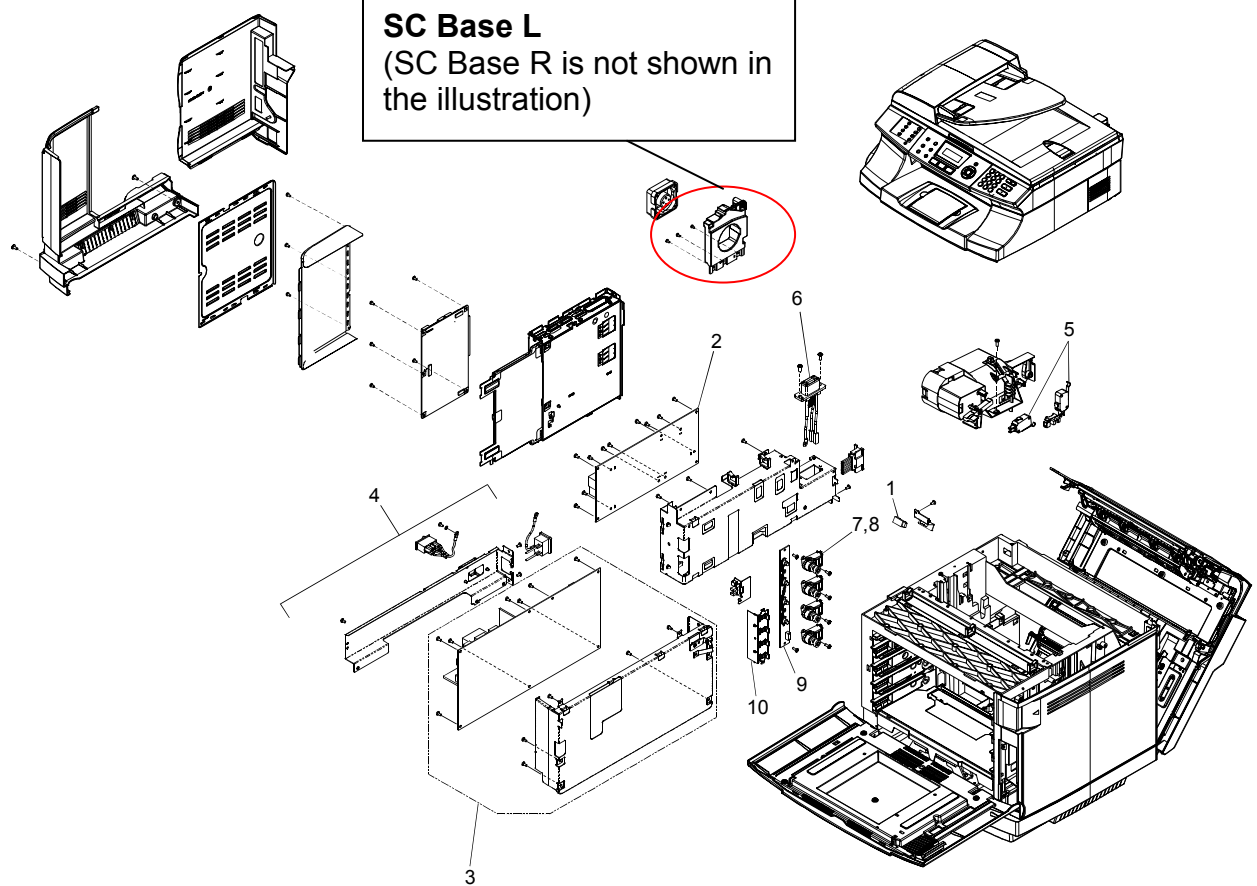
Change: This part was added.

Reason: As per a request from the field.

SC Base L/R KIT

Model: Model PL-MF

Date: 20-Dec-07

No.: MG157012

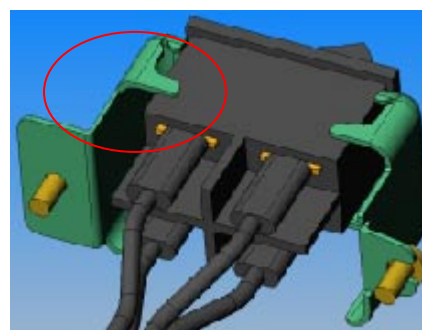
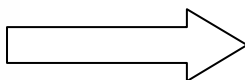
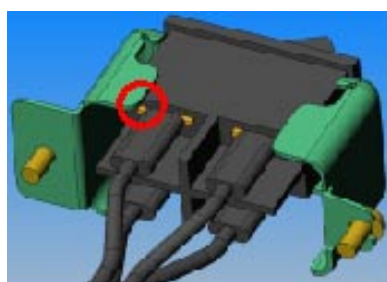


Model: Model PL-MF		Date: 11-Jan-08	No.: MG157013
Modified Article: Power Supply Bracket		Prepared by: H.K.	
From: 1st Tech. Support Sec. Service Support Dept.			
Reason for Modification:	<input type="checkbox"/> Parts catalog correction <input type="checkbox"/> Vendor change <input type="checkbox"/> Other <input type="checkbox"/> To facilitate assembly <input type="checkbox"/> To improve reliability <input checked="" type="checkbox"/> To meet standards <input type="checkbox"/> Part standardization <input type="checkbox"/> Product Safety ()		

Old part number	New part number	Description	Q'ty	Int	Page	Index	Note
V128612	V121385	POWER SUPPLY BRACKET 110V PU	1 - 1	X/O	7	4	
V128613	V121386	POWER SUPPLY BRACKET 220V PU	1 - 1	X/O	7	4	

Change: The shape of the bracket was changed.

Reason: To meet European standards.



Thailand Production

Model	V/Hz	Destination	Code	Serial Number
RICOH/Savin/Gestetner/ Lanier SP C210SF	120V, 60Hz	USA, Canada	G157-17	Q72794XXXXX
RICOH/Lanier SP C210SF	220 - 240V, 50/60Hz	Oceania	G157-23	Q72794XXXXX
RICOH/NRG/Lanier SP C210SF	220 - 240V, 50/60Hz	Europe, etc.	G157-27	Q72794XXXXX
RICOH/Lanier SP C210SF	220 - 240V, 50/60Hz	Asia	G157-29	Q72794XXXXX

Model: Model PL-MF		Date: 18-Feb-08	No.: MG157014
Modified Article: Transfer Base on the Rear Cover		Prepared by: H.K.	
From: Technical Service Dept., GTS Division			
Reason for Modification:	<input type="checkbox"/> Parts catalog correction <input type="checkbox"/> To facilitate assembly <input type="checkbox"/> Part standardization	<input type="checkbox"/> Vendor change <input type="checkbox"/> To improve reliability <input checked="" type="checkbox"/> Other	<input type="checkbox"/> To meet standards ()

Old part number	New part number	Description	Q'ty	Int	Page	Index	Note
V121282	V121368	REAR COVER ASSY 2	1 - 1	O/O	15	21	
V128611	V128710	TRANSFER BASE ASSY E PU 2	1 - 1	O/O	13	2	
V128498		TR Unit Band	1 - 0		9	16	

Change:

- 1) The shape of the registration guide sheet on the transfer base was changed.
- 2) The band of the transfer unit was deleted.

Reason:

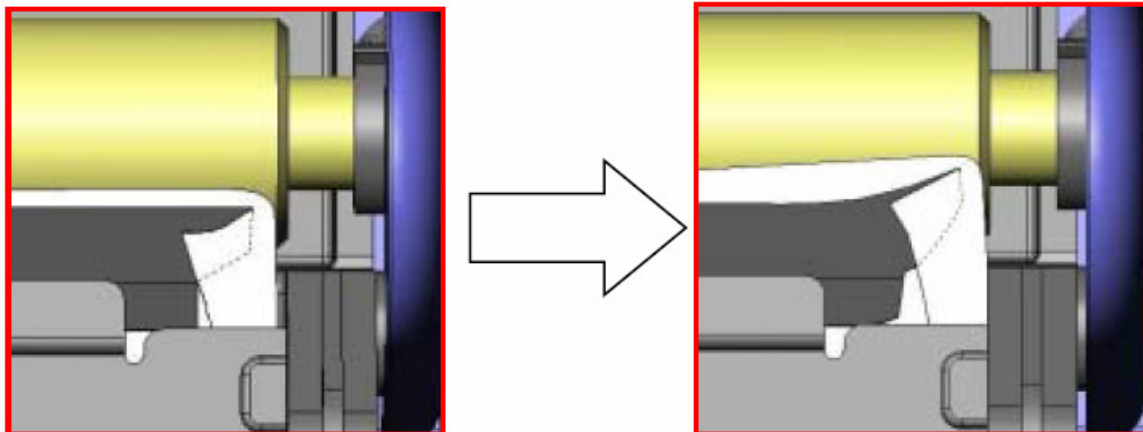
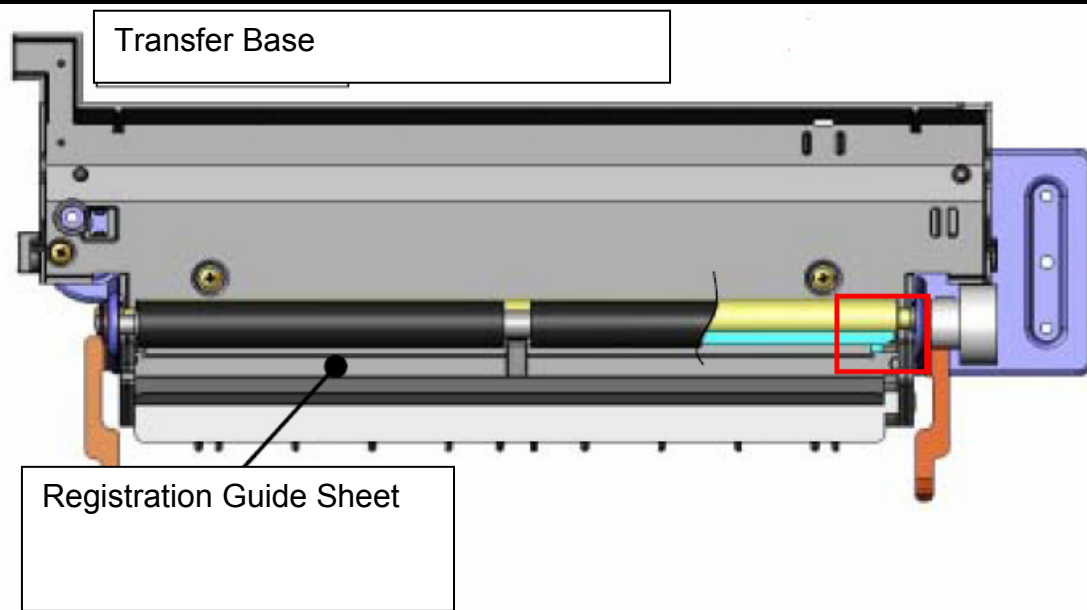
- 1) To ensure that the guide sheet is not bent by paper that is skewed during paper feed
- 2) To facilitate assembly on the production line.

Note: The band of the transfer unit was removed, but the existing spring and hinge mechanism will stop the rear cover halfway when it is opened.

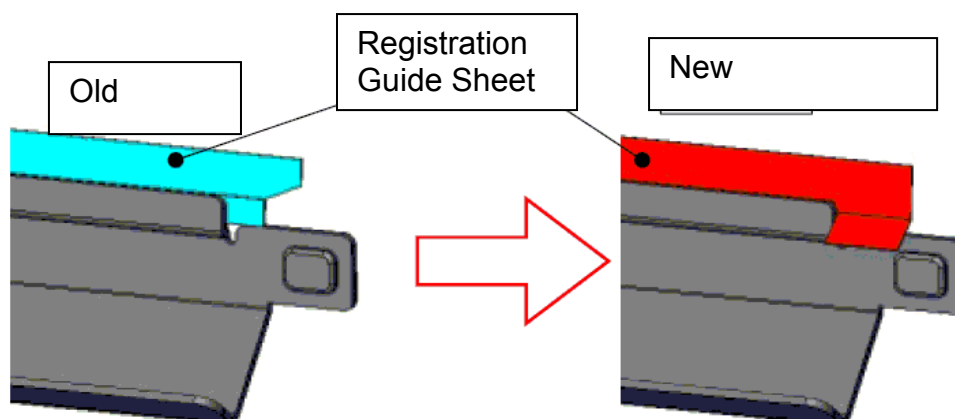
Model: Model PL-MF

Date: 18-Feb-08

No.: MG157014



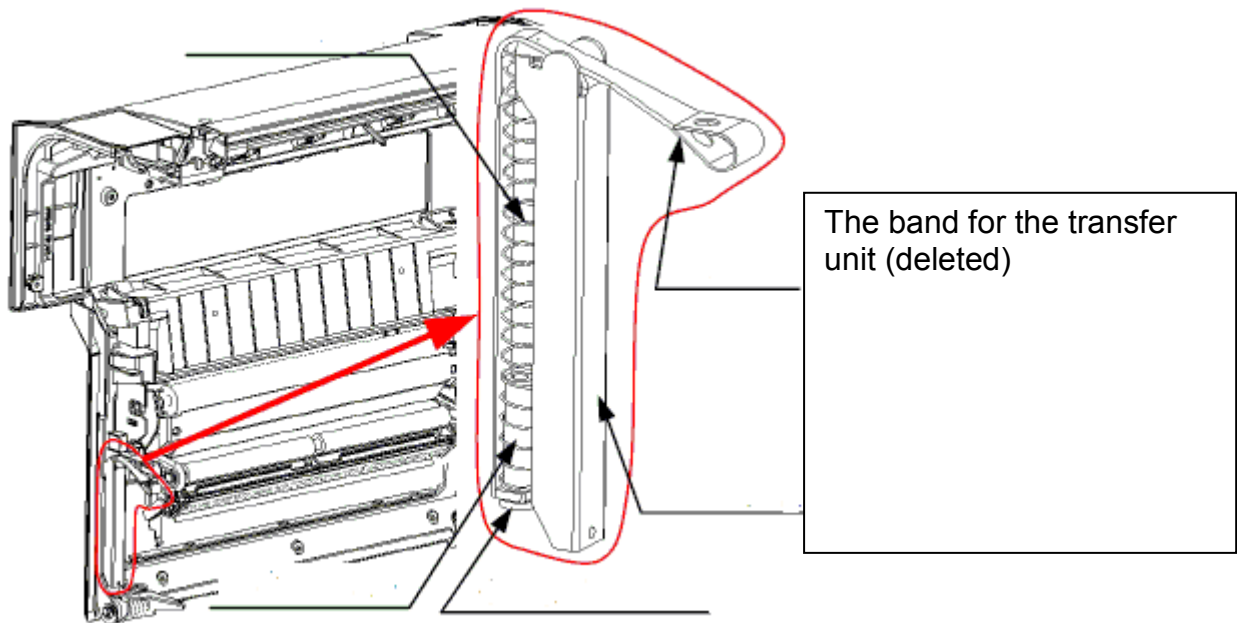
Skewed paper may bend the old registration guide sheet.



Model: Model PL-MF

Date: 18-Feb-08

No.: MG157014


Thailand Production

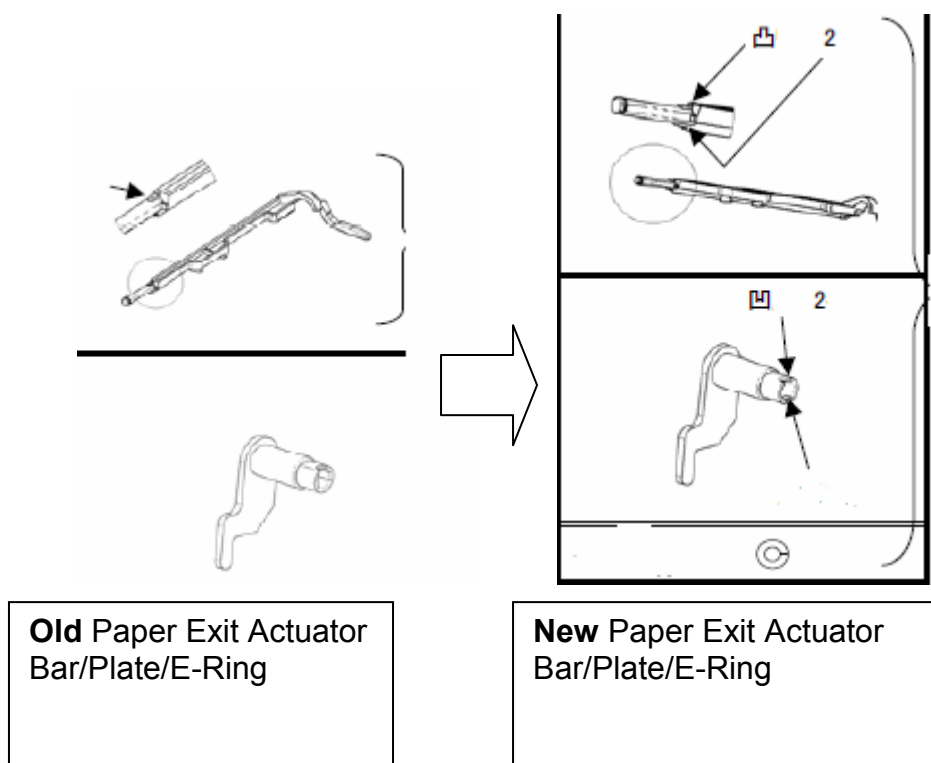
Model	V/Hz	Destination	Code	Serial Number
RICOH/Savin/Gestetner/Lanier SP C210SF	120V, 60Hz	USA, Canada	G157-17	Q7279000033
RICOH/Lanier SP C210SF	220 - 240V, 50/60Hz	Oceania	G157-23	Q7279000001
RICOH/NRG/Lanier SP C210SF	220 - 240V, 50/60Hz	Europe, etc.	G157-27	Q7279001912
RICOH/Lanier SP C210SF	220 - 240V, 50/60Hz	Asia	G157-29	Q7279001778

Model: Model PL-MF		Date: 6-Mar-08	No.: MG157015
Modified Article: Paper Exit Actuator		Prepared by: H.K.	
From: 1st Tech. Support Sec. Service Support Dept.			
Reason for Modification:	<input type="checkbox"/> Parts catalog correction <input type="checkbox"/> Vendor change <input type="checkbox"/> Other <input checked="" type="checkbox"/> To facilitate assembly <input type="checkbox"/> To improve reliability <input type="checkbox"/> To meet standards <input type="checkbox"/> Part standardization <input type="checkbox"/> Product Safety ()		

Old part number	New part number	Description	Q'ty	Int	Page	Index	Note
V128497	V128720	PAPER EXIT ACTUATOR PU(2)	1 - 1	X/O	13	10	

Change:

- 1) The shapes of the paper exit actuator (V128497) and bar (not a service part) were changed.
- 2) The new actuator and new bar were combined into one service part (V128720).

Reason: To facilitate assembly.


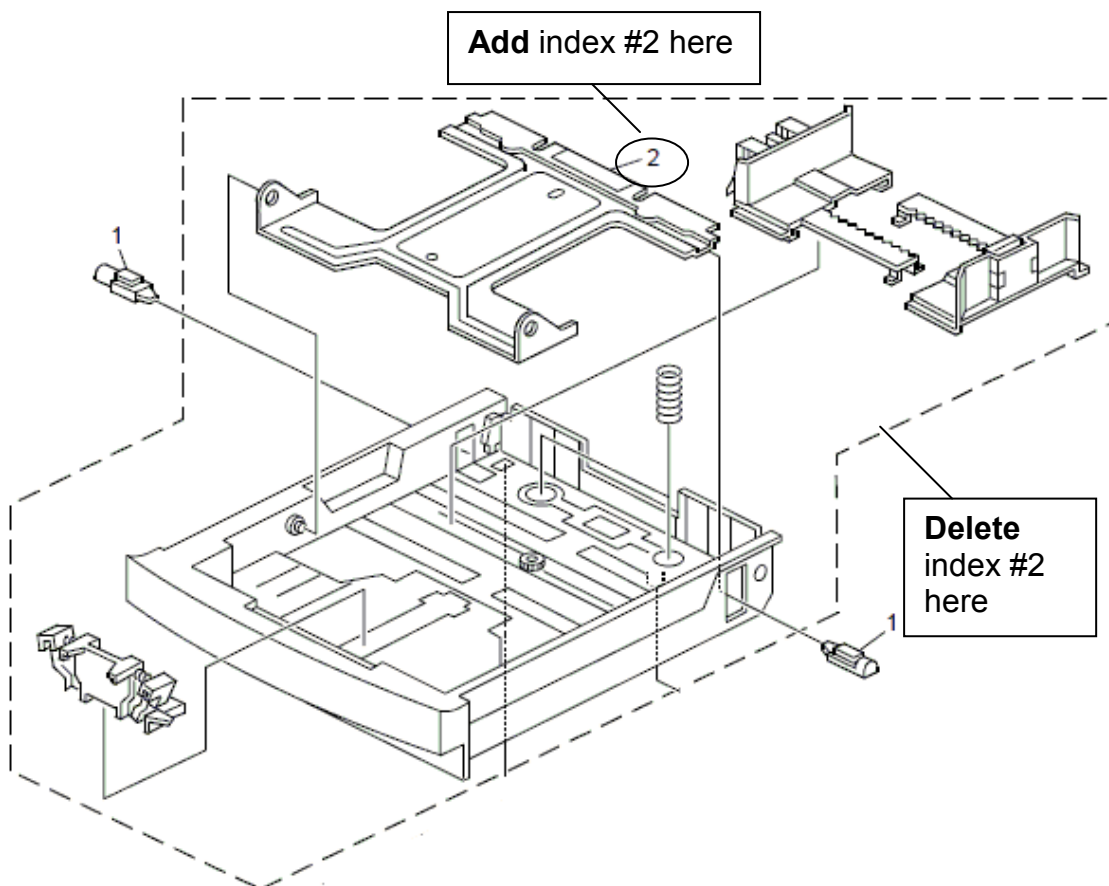
Model: Model PL-MF**Date:** 6-Mar-08**No.:** MG157015**Thailand Production**

Model	V/Hz	Destination	Code	Serial Number
RICOH/Savin/Gestetner/Lanier SP C210SF	120V, 60Hz	USA, Canada	G157-17	Q728850XXXX
RICOH/Lanier SP C210SF	220 - 240V, 50/60Hz	Oceania	G157-23	Q728850XXXX
RICOH/NRG/Lanier SP C210SF	220 - 240V, 50/60Hz	Europe, etc.	G157-27	Q7279600725
RICOH/Lanier SP C210SF	220 - 240V, 50/60Hz	Asia	G157-29	Q728850XXXX

Model: Model PL-MF		Date: 12-Mar-08	No.: MG157016
Modified Article: Cassette Base		Prepared by: H.K.	
From: 1st Tech. Support Sec. Service Support Dept.			
Reason for Modification:	<input checked="" type="checkbox"/> Parts catalog correction	<input type="checkbox"/> Vendor change	<input type="checkbox"/> Other
	<input type="checkbox"/> To facilitate assembly	<input type="checkbox"/> To improve reliability	<input type="checkbox"/> To meet standards
	<input type="checkbox"/> Part standardization	<input type="checkbox"/> Product Safety	()

Change/Reason: The illustration was corrected as shown below.

Parts Catalog, pg. 20



Model: Model PL-MF		Date: 28-Mar-08	No.: MG157017
Modified Article: Main Motor		Prepared by: H.K.	
From: Technical Service Dept., GTS Division			
Reason for Modification:	<input type="checkbox"/> Parts catalog correction <input type="checkbox"/> To facilitate assembly <input type="checkbox"/> Part standardization	<input checked="" type="checkbox"/> Vendor change <input type="checkbox"/> To improve reliability <input type="checkbox"/> Other	<input type="checkbox"/> To meet standards ()

Old part number	New part number	Description	Q'ty	Int	Page	Index	Note
V128423	V128717	MAIN MOTOR PU - DC53W	1	O/O	5	3	

Due to a vendor change, the part number has been changed.

Model: Model PL-MF		Date: 10-Apr-08	No.: MG157018
Modified Article: Lock Lever		Prepared by: H.K.	
From: 1st Tech. Support Sec. Service Support Dept.			
Reason for Modification:	<input checked="" type="checkbox"/> Parts catalog correction <input type="checkbox"/> Vendor change <input type="checkbox"/> Other <input type="checkbox"/> To facilitate assembly <input type="checkbox"/> To improve reliability <input type="checkbox"/> To meet standards <input type="checkbox"/> Part standardization <input type="checkbox"/> Product Safety ()		

Old part number	New part number	Description	Q'ty	Int	Page	Index	Note
	V128721	SL5F LOCK LEVER ASS'Y	0 - 1		5	*30	

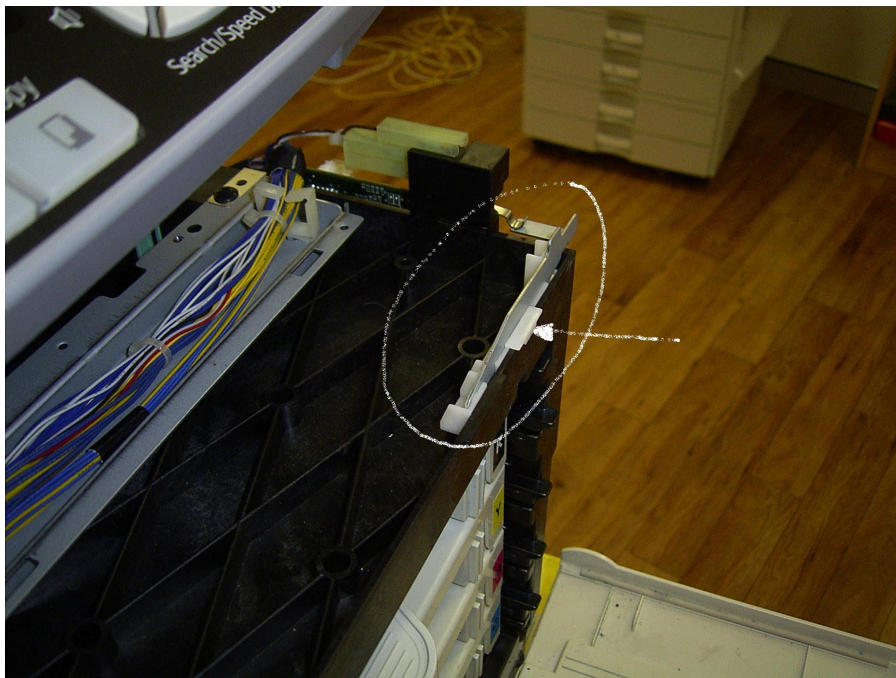
*: New index

Change/Reason: The part in the table was missing from the Parts Catalog.

Pg. 4

P/N V128721 SL5F LOCK LEVER ASS'Y (Metal & Plastic parts)

Index #30



Model: Model PL-MF		Date: 3-Jun-08	No.: MG157019
Modified Article: Laser Ass'y		Prepared by: H.K.	
From: 1st Tech. Support Sec. Service Support Dept.			
Reason for Modification:	<input type="checkbox"/> Parts catalog correction <input checked="" type="checkbox"/> Vendor change <input type="checkbox"/> Other <input type="checkbox"/> To facilitate assembly <input type="checkbox"/> To improve reliability <input type="checkbox"/> To meet standards <input type="checkbox"/> Part standardization <input type="checkbox"/> Product Safety ()		

Old part number	New part number	Description	Q'ty	Int	Page	Index	Note
V121283	V121367	LASER ASS'Y MSL PU2	1 - 1	O/O	15	22	

Reason & Change: Vendor change

Model: Model PL-MF		Date: 9-Jun-08	No.: MG157020
Modified Article: Lock Knob and Top Fuser Cover		Prepared by: H.K.	
From: Technical Service Dept., GTS Division			
Reason for Modification:	<input type="checkbox"/> Parts catalog correction <input type="checkbox"/> To facilitate assembly <input type="checkbox"/> Part standardization	<input type="checkbox"/> Vendor change <input type="checkbox"/> To improve reliability <input checked="" type="checkbox"/> Other	<input type="checkbox"/> To meet standards ()

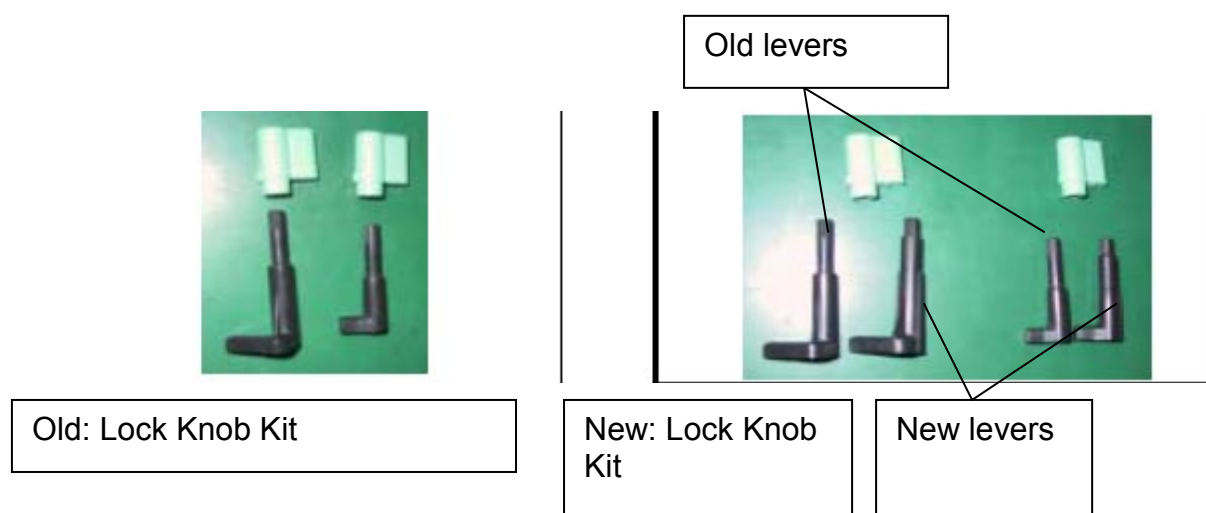
Old part number	New part number	Description	Q'ty	Int	Page	Index	Note
V128480	V128711	LOCK KNOB KIT	1	X/O	11	5	
V128606	G1627370	TOP FUSER COVER	1	X/X	11	2	
V128699	V128713	FUSING UNIT (110V) FU2	1	O/O	3	4	
V128701	V128715	FUSING UNIT (220V) FU2	1	O/O	3	4	

Change: The shapes of the fusing cover projection and lock lever were changed.

Reason: To increase the durability of these parts.

Important: If the old top fuser cover needs to be replaced, install the new top fuser cover **together with** the new lock levers in the new lock knob kit.

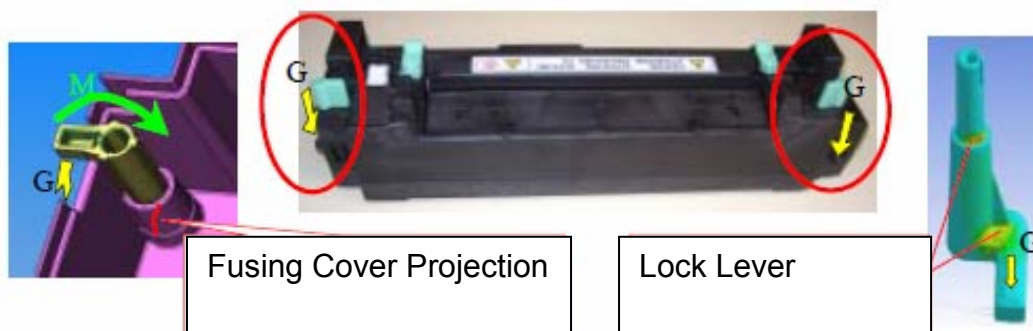
Note: The new lock knob kit contains both the old and new lock levers, so that you can replace the lock knob.

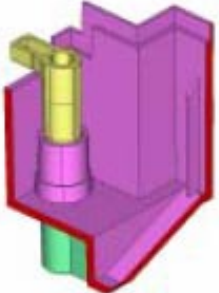
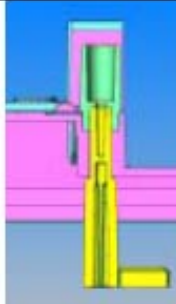

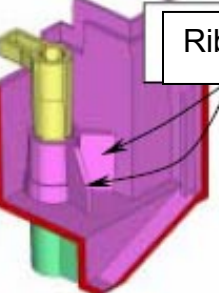
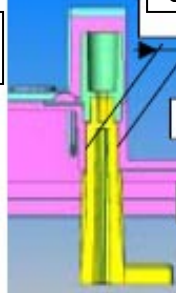



Model: Model PL-MF

Date: 9-Jun-08

No.: MG157020



Old			
New	 Ribs added	 Shape changed A B C	

A: Shape changed
B: Rib added
C: Rib extended

Thailand Production

Model	V/Hz	Destination	Code	Serial Number
RICOH/Savin/Gestetner/Lanier SP C210SF	120V, 60Hz	USA, Canada	G157-17	Spare parts only
RICOH/Lanier SP C210SF	220 - 240V, 50/60Hz	Oceania	G157-23	Spare parts only
RICOH/NRG/Lanier SP C210SF	220 - 240V, 50/60Hz	Europe, etc.	G157-27	Spare parts only
RICOH/Lanier SP C210SF	220 - 240V, 50/60Hz	Asia	G157-29	Spare parts only



Part Change Information List

Date: March 18, 2009

Model	Code	PCIL Number	PCIL Correction	Old part number	New part number	Description	Old Q'ty	New Q'ty	Int	3DPC	Page	Index	Set	Set Int	RTB	Note	Ref Number
Model PL-MF	G157	200903		V128444	V128705	WASTE TONER AUGER PU2	1	1	O/O		5	24					T0603903



Part Change Information List

Date: May 30, 2009

Model	Code	PCIL Number	PCIL Correction	Old part number	New part number	Description	Old Q'ty	New Q'ty	Int	3DPC	Page	Index	Set	Set Int	RTB	Note	Ref Number
PL-MF	G157	200905			V121387	DOCUMENT HOLD SUPPLY ASSEMBLY	0	1			19	38			RG157007		V0900976



Part Change Information List

Date: April 30, 2010

Model	Code	PCIL Nr.	PCIL Correction	Old part number	New part number	Description	Old Q'ty	New Q'ty	Int	3DPC	Page	Index	Set	Set Int	RTB	Note	Ref. Nr.	ECN Nr.
PL-MF	G157	201004		V128410	V128723	PAPER CASSETTE(A4)PU2	1	1	O/O		21	*					V1000129	