

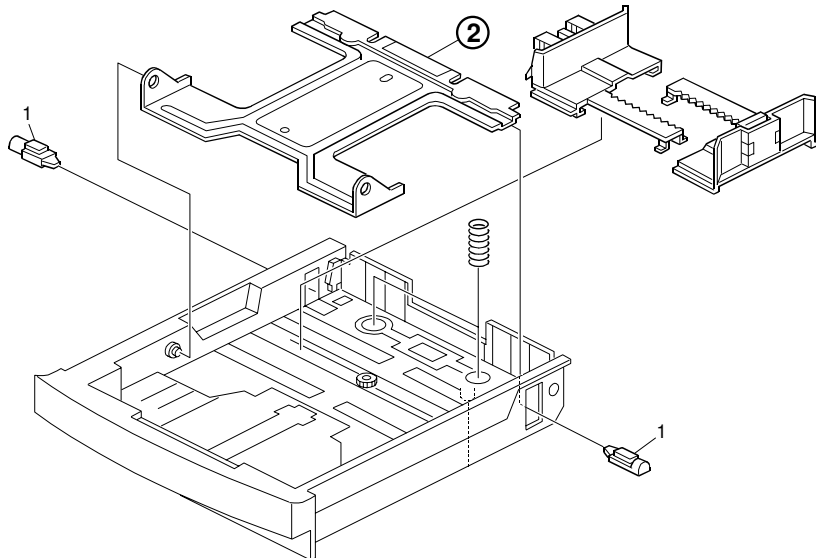
| | | | |
|--|--|---|---|
| Model: Model PL-P1 | | Date: 30-Apr-04 | No.: MG108001 |
| Modified Article: Parts Catalog Correction | | Prepared by: H.Taguchi | |
| From: 1st Tech. Support Sec. Service Support Dept. | | | |
| Reason for Modification: | <input checked="" type="checkbox"/> Parts catalog correction <input type="checkbox"/> To facilitate assembly <input type="checkbox"/> Part standardization | <input type="checkbox"/> Vendor change <input type="checkbox"/> To improve reliability <input type="checkbox"/> Other | <input type="checkbox"/> To meet standards () |

Please apply the following correction to your Parts Catalogs:

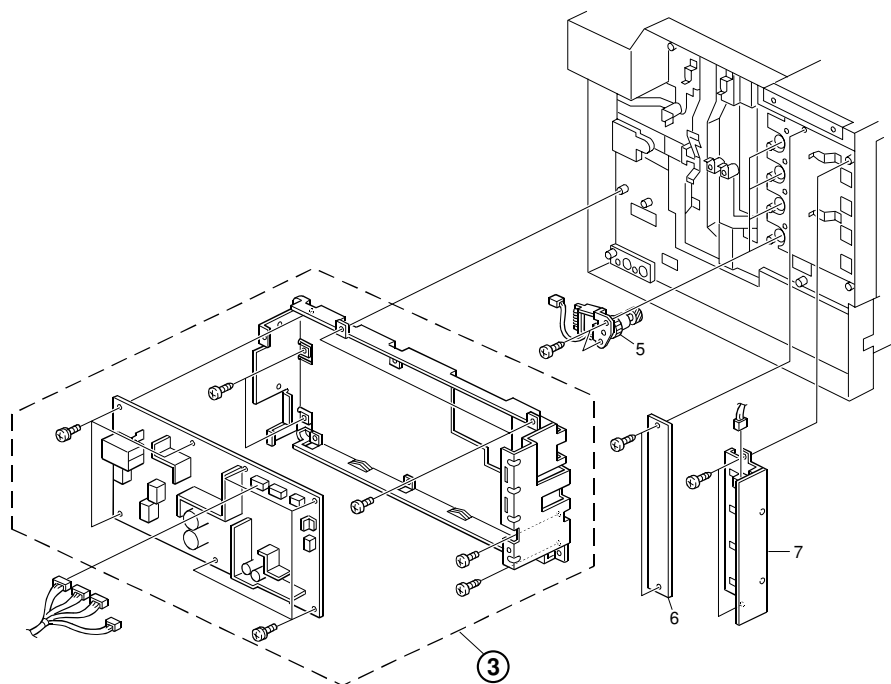
| Old part number | New part number | Description | Q'ty | Int | Page | Index | Note |
|-----------------|-----------------|-----------------------------|------|-----|------|-------|------|
| V128403 | - | OPC Charger Roller PU | 1-0 | | 3 | 4 | |
| V128444 | V128403 | OPC Charger Roller PU | 1-1 | | 3 | 16 | |
| V128464 | V126648 | OHP Sensor 3 | 1-1 | | 9 | 12 | |
| V128479 | - | Thermistor Assy FU | 1-0 | | 11 | 6 | |
| V128611 | V128487 | Registration Roller Assy PU | 1-1 | | 13 | 4 | |
| V128487 | V128611 | Transfer Base Assy PU | 1-1 | | 13 | 5 | |
| V128612 | V128612 | Power Supply Bracket(110V) | 1 | | 19 | 2 | |
| | V128613 | Power Supply Bracket(220V) | 1 | | | | |
| V128612 | - | Power Supply Bracket(110V) | 1-0 | | 21 | 8 | |
| V128613 | - | Power Supply Bracket(220V) | 1-0 | | 21 | 8 | |

The illustration has been changed as follows.

Page 4: Index 2 has been revised.



Page 20: Index 3 has been revised and Index 8 has been deleted.



| | | | |
|--|---|--|---|
| Model: Model PL-P1 | | Date: 1-Jun-04 | No.: MG108002 |
| Modified Article: Cover | | Prepared by: H.Taguchi | |
| From: 1st Tech. Support Sec. Service Support Dept. | | | |
| Reason for Modification: | <input type="checkbox"/> Parts catalog correction <input type="checkbox"/> To facilitate assembly <input type="checkbox"/> Part standardization | <input type="checkbox"/> Vendor change <input type="checkbox"/> To improve reliability <input checked="" type="checkbox"/> Other | <input type="checkbox"/> To meet standards () |

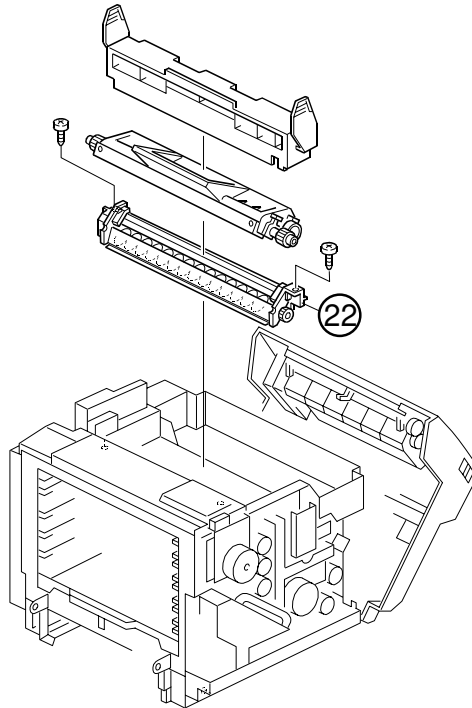
The decal of the following parts has been changed to the correct one.

| Old part number | New part number | Description | Q'ty | Int | Page | Index | Note |
|-----------------|-----------------|-------------------|-------|-----|------|-------|------|
| V128414 | V128629 | OP Panel Cover EX | 1 - 1 | X/O | 3 | 7 | |
| V128420 | V128628 | Front Cover PU EX | 1 - 1 | X/O | 3 | 15 | |

| | | | |
|--|---|--|---|
| Model: Model PL-P1 | | Date: 4-Jun-04 | No.: MG108003 |
| Modified Article: Waste Toner Auger PU | | Prepared by: H.Taguchi | |
| From: 1st Tech. Support Sec. Service Support Dept. | | | |
| Reason for Modification: | <input type="checkbox"/> Parts catalog correction <input type="checkbox"/> To facilitate assembly <input type="checkbox"/> Part standardization | <input type="checkbox"/> Vendor change <input type="checkbox"/> To improve reliability <input checked="" type="checkbox"/> Other | <input type="checkbox"/> To meet standards () |

The following has been newly registered as a service part to further facilitate servicing in the field.

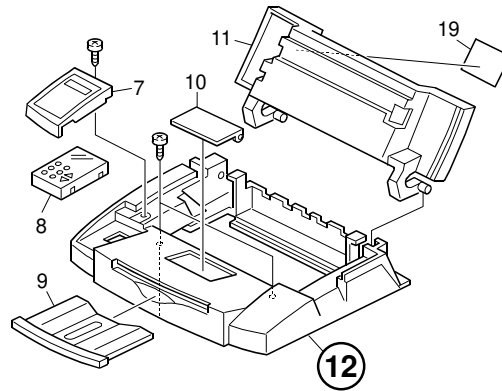
| Old part number | New part number | Description | Q'ty | Int | Page | Index | Note |
|-----------------|-----------------|----------------------|------|-----|------|-------|------|
| | V128444 | Waste Toner Auger PU | 1 | | 3 | 22 | NEW |



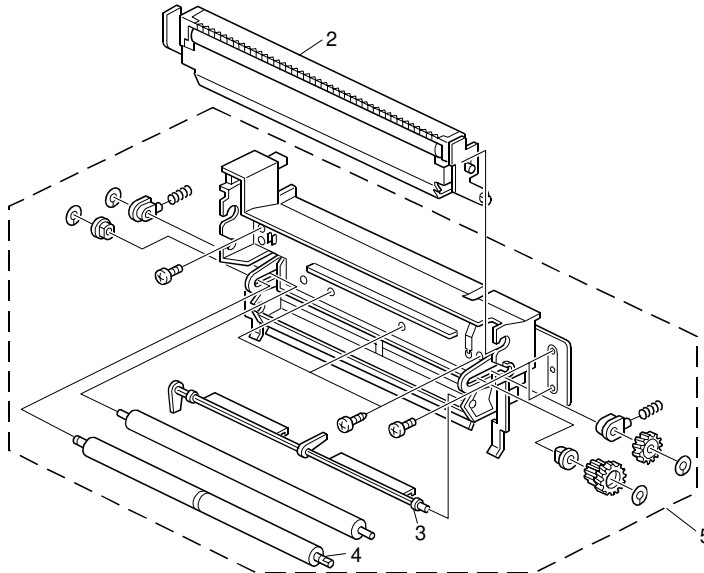
| | | | |
|--|--|---|---|
| Model: Model PL-P1 | | Date: 16-Jun-04 | No.: MG108004 |
| Modified Article: Parts Catalog correction 2 | | Prepared by: H.Taguchi | |
| From: 1st Tech. Support Sec. Service Support Dept. | | | |
| Reason for Modification: | <input checked="" type="checkbox"/> Parts catalog correction <input type="checkbox"/> To facilitate assembly <input type="checkbox"/> Part standardization | <input type="checkbox"/> Vendor change <input type="checkbox"/> To improve reliability <input type="checkbox"/> Other | <input type="checkbox"/> To meet standards () |

Please apply the following illustration corrections to your Parts Catalogs:

- Page2: Index 12 has been revised.



- Page12: Index 5 has been revised.
(The transfer roller assembly PU is not included in the transfer base assembly).



| | | | |
|--|---|--|--|
| Model: Model PL-P1 | | Date: 2-Jul-04 | No.: MG108005 |
| Modified Article: Fusing Unit | | Prepared by: H.Taguchi | |
| From: 1st Tech. Support Sec. Service Support Dept. | | | |
| Reason for Modification: | <input type="checkbox"/> Parts catalog correction <input type="checkbox"/> To facilitate assembly <input type="checkbox"/> Part standardization | <input type="checkbox"/> Vendor change <input checked="" type="checkbox"/> To improve reliability <input type="checkbox"/> Other | <input type="checkbox"/> To meet standards () |

| Old part number | New part number | Description | Q'ty | Int | Page | Index | Note |
|-----------------|-----------------|-----------------------|-------|-----|------|-------|------|
| V128405 | V128622 | Fusing Unit (110V) FU | 1 – 1 | X/O | 11 | * | |
| V128406 | V128623 | Fusing Unit (220V) FU | 1 – 1 | X/O | 11 | * | |

Reasons for these part number changes:

- A cleaner for the pressure roller was added to minimize black dots on images.
Note: The cleaner prevents too much toner from building up on the thermistor.
- The shape of the center pad was changed to improve fusing with thin paper types.

RCL (Japan) Production

| Model | V/Hz | Destination | Code | Serial Number |
|--|---------------------|--------------|---------|---------------|
| RICOH Aficio CL 1000N | 120V, 60Hz | USA, Canada | G108-17 | Q1540600001 |
| Gestetner:P7431cn Nashuatec:P7431cn Rex-Rotary:P7431cn | 220 - 240V, 50/60Hz | Europe, etc. | G108-22 | Q1540600001 |
| RICOH Aficio CL 1000N | 220 - 240V, 50/60Hz | Europe, etc. | G108-27 | Q1540600001 |

| | | | |
|---|--|---|---|
| Model: Model PL-P1 | | Date: 2-Aug-04 | No.: MG108006 |
| Modified Article: Additional information (Model PL-P1a) | | Prepared by: H.Taguchi | |
| From: 1st Tech. Support Sec. Service Support Dept. | | | |
| Reason for Modification: | <input checked="" type="checkbox"/> Parts catalog correction <input type="checkbox"/> To facilitate assembly <input type="checkbox"/> Part standardization | <input type="checkbox"/> Vendor change <input type="checkbox"/> To improve reliability <input type="checkbox"/> Other | <input type="checkbox"/> To meet standards () |

The parts below were added in accordance with the launch of Model PL-P1a. These parts are only for Model PL-P1a.

Note: The mechanical parts for Model PL-P1a and Model PL-P1 are the same, except for the operation panel and printer controller board.

| Old part number | New part number | Description | Q'ty | Int | Page | Index | Note |
|-----------------|-----------------|--------------------------|------|-----|------|-------|------|
| | V128639 | OP Panel RG | 1 | | 3 | 8 | |
| | V128640 | OP Panel Cover RG | 1 | | 3 | 7 | |
| | V128638 | Printer Controller RNE | 1 | | 19 | 14 | |
| | G1328103 | Manual_Setup_NA | 1 | | 3 | 20 | |
| | G1328108 | Manual_Option_NA | 1 | | 3 | 20 | |
| | G1328700 | Decal_Ricoh_NA_Pluto_P1a | 1 | | 3 | 18 | |
| | G1328702 | Decal_NAS_Pluto_P1a | 1 | | 3 | 18 | |
| | G1328703 | Decal_REX | 1 | | 3 | 18 | |
| | G1328704 | Decal_GES_Pluto_P1a | 1 | | 3 | 18 | |

| | | | |
|--|--|---|---|
| Model: Model PL-P1 | | Date: 2-Aug-04 | No.: MG108007 |
| Modified Article: Part catalogue collection | | Prepared by: H.Taguchi | |
| From: 1st Tech. Support Sec. Service Support Dept. | | | |
| Reason for Modification: | <input checked="" type="checkbox"/> Parts catalog correction <input type="checkbox"/> To facilitate assembly <input type="checkbox"/> Part standardization | <input type="checkbox"/> Vendor change <input type="checkbox"/> To improve reliability <input type="checkbox"/> Other | <input type="checkbox"/> To meet standards () |

The following parts were added for the China model (newly released).

| Old part number | New part number | Description | Q'ty | Int | Page | Index | Note |
|-----------------|-----------------|--------------------------------|------|-----|------|-------|------|
| | GZ000005 | Power Code – 230V | 1 | | 3 | 14 | |
| | GA003065 | Decal – Inkjet Caution (China) | 1 | | 3 | 19 | |

| | | | |
|--|--|---|---|
| Model: Model PL-P1 | | Date: 13-Sep-04 | No.: MG108008 |
| Modified Article: Left Side Cover PU | | Prepared by: H.Taguchi | |
| From: 1st Tech. Support Sec. Service Support Dept. | | | |
| Reason for Modification: | <input type="checkbox"/> Parts catalog correction <input checked="" type="checkbox"/> To facilitate assembly <input type="checkbox"/> Part standardization | <input type="checkbox"/> Vendor change <input type="checkbox"/> To improve reliability <input type="checkbox"/> Other | <input type="checkbox"/> To meet standards () |

The rib on the following part has been removed to facilitate assembly.

| Old part number | New part number | Description | Q'ty | Int | Page | Index | Note |
|-----------------|-----------------|----------------------|-------|-----|------|-------|------|
| V128418 | V128652 | Left Side Cover PU 2 | 1 - 1 | X/O | 3 | 3 | |

| | | | |
|--|---|--|--|
| Model: Model PL-P1 | | Date: 24-Sep-04 | No.: MG108009 |
| Modified Article: NVRAM | | Prepared by: H.Taguchi | |
| From: 1st Tech. Support Sec. Service Support Dept. | | | |
| Reason for Modification: | <input type="checkbox"/> Parts catalog correction <input type="checkbox"/> To facilitate assembly <input type="checkbox"/> Part standardization | <input type="checkbox"/> Vendor change <input type="checkbox"/> To improve reliability <input checked="" type="checkbox"/> Other | <input type="checkbox"/> To meet standards () |

| Old part number | New part number | Description | Q'ty | Int | Page | Index | Note |
|-----------------|-----------------|--------------------|------|-----|------|-------|------|
| | G1089590 | NVRAM ZERO COUNTER | 1 | | 19 | 14 | NEW |

Change: Part newly added

Reason: 0-counter modification (see RTB #Rgene013).

Replacement Procedure

1. Print out the SMC report from SP5990 (when possible).
2. Turn off the main switch and unplug the power cord.
3. Remove the NVRAM on the controller board
4. Install the new 0-counter NVRAM.
5. Contact your supervisor to enter the destination code and controller serial number.

Note: The default destination code is Japan.

6. Do a RAM clear for the controller settings:
 - SCS (SP5-801-003): System settings
 - PRT (SP5-801-008): Printer settings
 - NCS (SP5-801-011): System default and I/F settings
7. Do a Counter Clear (SP7-808).
8. Do these settings:
 - Meter charge mode (SP5-930-001)
 - Counter Method (SP5-045)
 - Telephone Number Setting (SP5-812)

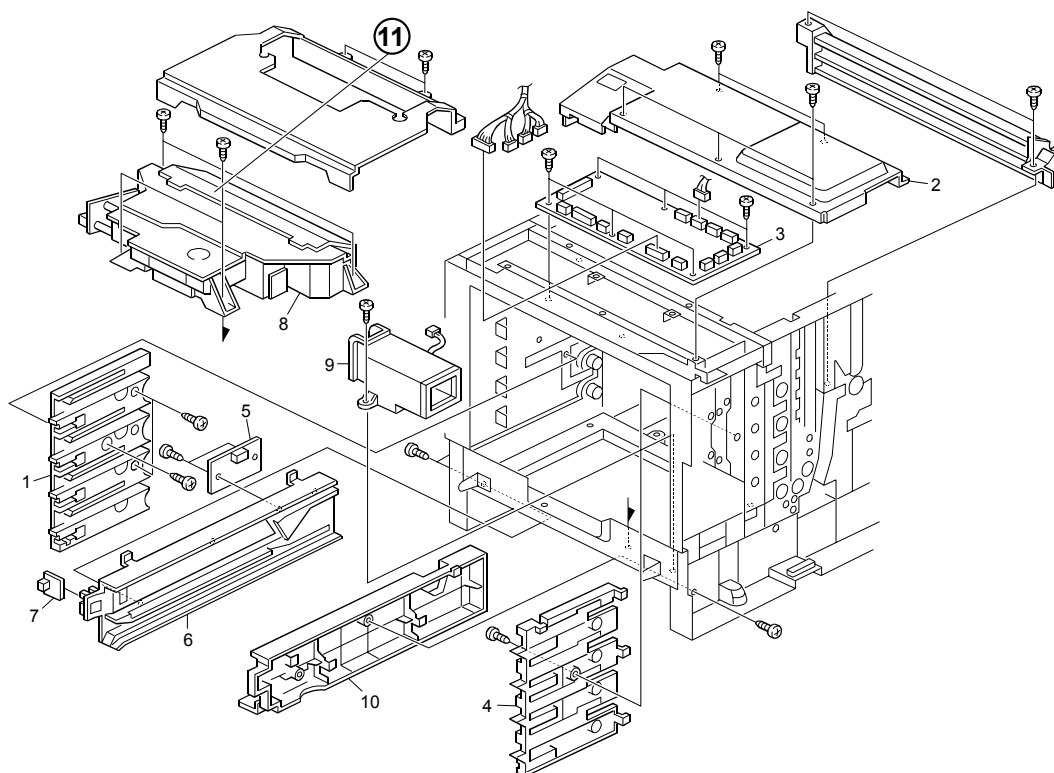
Note: These are related to service contracts.

9. For any SP mode that was changed from its original design default or factory default, input the most recent value.
 - Refer to the SMC report for the most recent values.

| | | | |
|--|--|------------------------|---------------|
| Model: Model PL-P1 | | Date: 10-Feb-05 | No.: MG108010 |
| Modified Article: Dust Proof Cover | | Prepared by: H.Taguchi | |
| From: 1st Tech. Support Sec. Service Support Dept. | | | |
| Reason for Modification: | <input type="checkbox"/> Parts catalog correction <input type="checkbox"/> Vendor change <input checked="" type="checkbox"/> Other <input type="checkbox"/> To facilitate assembly <input type="checkbox"/> To improve reliability <input type="checkbox"/> To meet standards <input type="checkbox"/> Part standardization <input type="checkbox"/> Product Safety () | | |

The dust proof cover is newly registered as a service part.

| Old part number | New part number | Description | Q'ty | Int | Page | Index | Note |
|-----------------|-----------------|----------------|------|-----|------|-------|------|
| | V128662 | OU5 FRONT CASE | 1 | | 7 | 11 | NEW |



| | | | |
|--|---|-------------------|---------------|
| Model: Model PL-P1 | | Date: 29-May-06 | No.: MG108011 |
| Modified Article: Guide Set & FFC Harness | | Prepared by: H.K. | |
| From: 1st Tech. Support Sec. Service Support Dept. | | | |
| Reason for Modification: | <input checked="" type="checkbox"/> Parts catalog correction <input type="checkbox"/> Vendor change <input type="checkbox"/> Other <input type="checkbox"/> To facilitate assembly <input type="checkbox"/> To improve reliability <input type="checkbox"/> To meet standards <input type="checkbox"/> Part standardization <input type="checkbox"/> Product Safety () | | |

| Old part number | New part number | Description | Q'ty | Int | Page | Index | Note |
|-----------------|-----------------|----------------|------|-----|------|-------|------|
| | V128663 | PP5 GUIDE SET | 1 | | 13 | *9 | |
| | V128499 | FFC Harness PU | 1 | | 18 | *14 | |

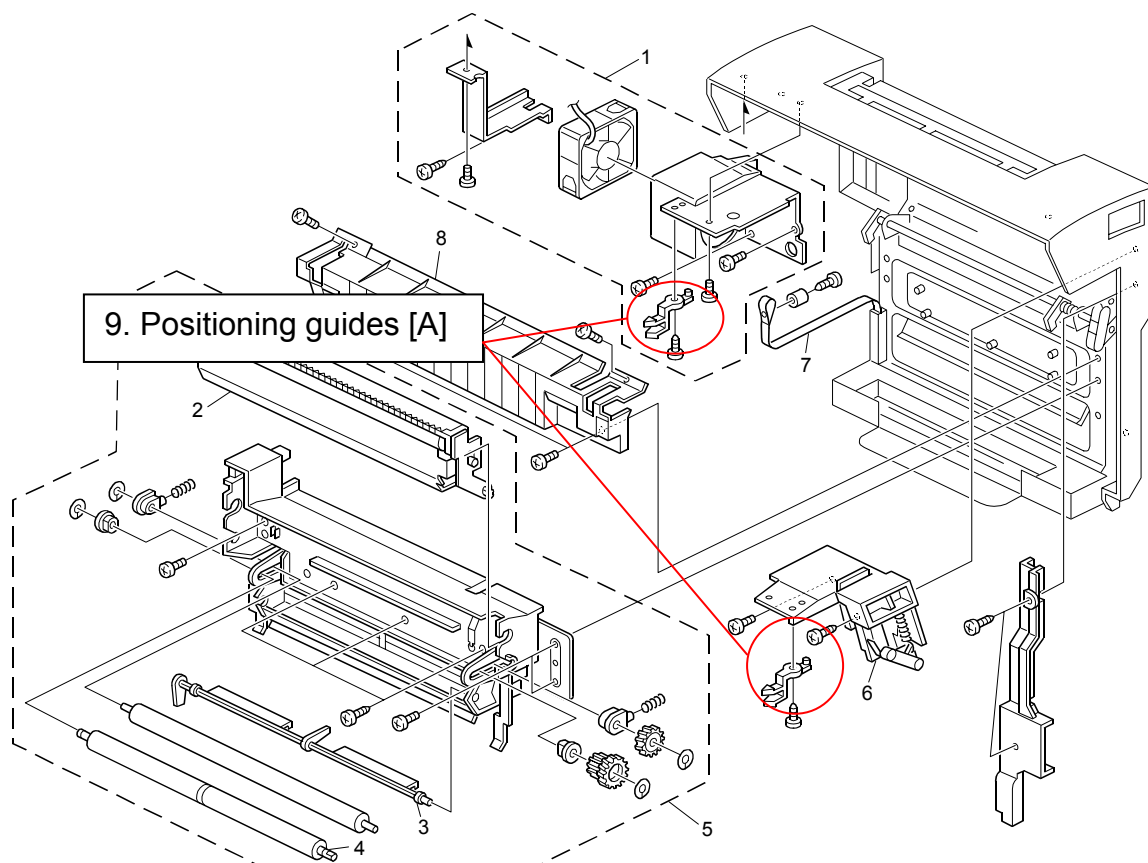
*: New index

Change: The parts in the table were newly registered.

Reason: A request was received from the field.

Note:

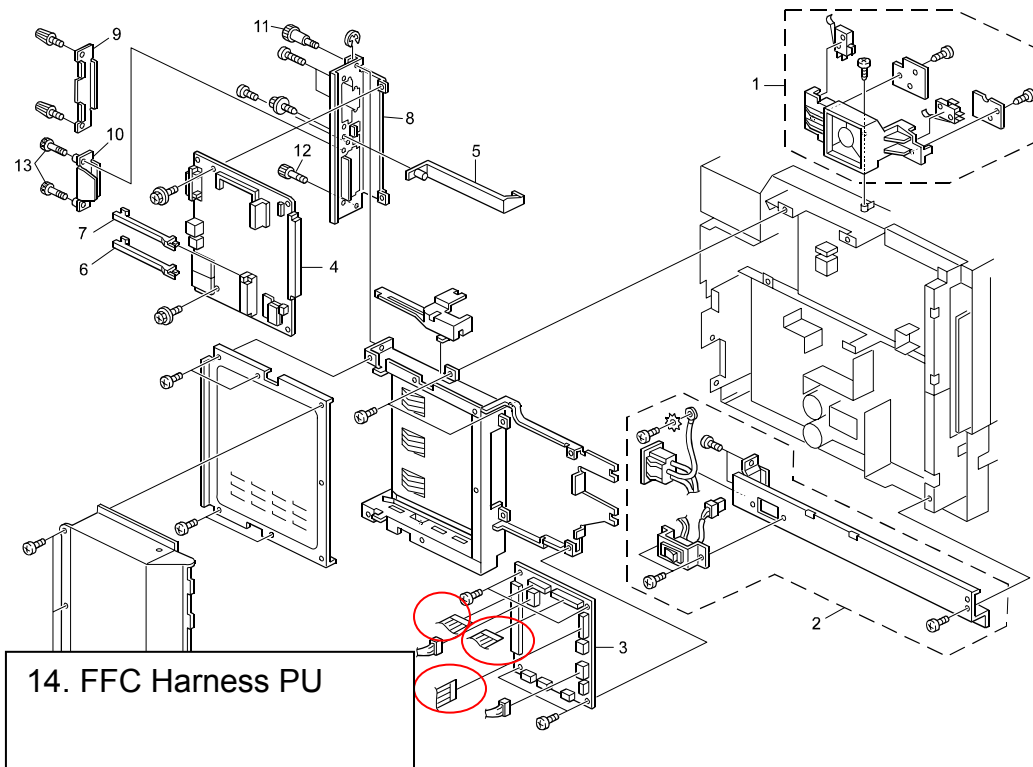
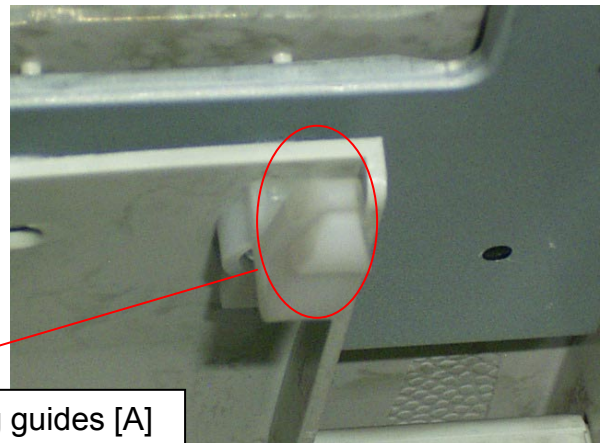
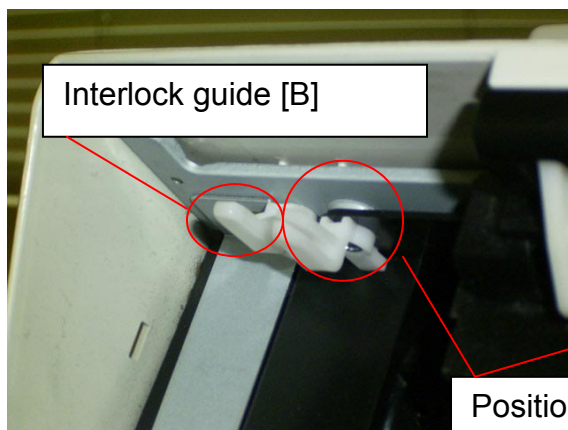
- The PP5 Guide Set includes two positioning guides [A] and one interlock guide [B].
- The FFC Harness PU includes three harness cables.



Model: Model PL-P1

Date: 29-May-06

No.: MG108011



| | | | |
|---|---|---|--|
| Model: Model PL-P1 | | Date:13-Jul-06 | No.: MG108012 |
| Modified Article: Printer Controller Board | | Prepared by: H.K. | |
| From: Technical Service Dept., GTS Division | | | |
| Reason for Modification: | <input type="checkbox"/> Parts catalog correction <input type="checkbox"/> To facilitate assembly <input type="checkbox"/> Part standardization | <input type="checkbox"/> Vendor change <input type="checkbox"/> To improve reliability <input type="checkbox"/> Other | <input checked="" type="checkbox"/> To meet standards (RoHS) |

| Old part number | New part number | Description | Q'ty | Int | Page | Index | Note |
|-----------------|-----------------|--------------------------------------|------|-----|------|-------|------|
| G1085217 | G1085218 | PCB:PLUTO-P1:RAM:EXP (G108) | 1 | X/O | 19 | 4 | |
| V128638 | V128679 | PRINTER CONTROLLER RNE (ROHS) (G132) | 1 | X/O | 19 | 4 | |

Change:

The materials of the other parts in the table were changed.

Reason:

RoHS compliance.

Note: The functions of these parts were not changed.

IMPORTANT:

- The materials for the parts were changed before the part numbers were changed. To make sure the correct parts are used on the correct machines, please handle the parts as follows:

Parts with the **old** P/N:
Parts with the **new** P/N:

Non-RoHS compliant parts
RoHS compliant parts

| | RoHS Compliant Parts | Non-RoHS Compliant Parts |
|------------------------------------|--------------------------------|------------------------------------|
| RoHS Compliant Machines | OK | <u>DO NOT USE</u> |
| Non-RoHS Compliant Machines | OK | OK |

- Continue using** non-RoHS compliant parts on non-ROHS compliant machines **until the stock of these parts runs out**. Then, start using RoHS compliant parts on the non-RoHS compliant machines.
- DO NOT use** non-RoHS compliant parts on RoHS compliant machines.
Note: This is to make sure that all machines are in full compliance with the RoHS Directive.

Model: Model PL-P1

Date:13-Jul-06

No.: MG108012

RCL (Japan) Production

| Model | V/Hz | Destination | Code | Serial Number |
|--|---------------------|--------------------|-------------|----------------------|
| RICOH Aficio CL 1000N | 120V, 60Hz | USA, Canada | G108-17 | Q15603xxxxx |
| Gestetner:P7431cn Nashuatec:P7431cn Rex-Rotarv:P7431cn | 220 - 240V, 50/60Hz | Europe, etc. | G108-22 | Q15603xxxxx |
| RICOH Aficio CL 1000N | 220 - 240V, 50/60Hz | Europe, etc. | G108-27 | Q15603xxxxx |
| RICOH Aficio CL 800 | 220 - 240V, 50/60Hz | China | G132-21 | Q22603xxxxx |
| Gestetner:P7431c Nashuatec:P7431c Rex-Rotarv:P7431c | 220 - 240V, 50/60Hz | Europe, etc. | G132-22 | Q22603xxxxx |
| RICOH Aficio CL 800 | 220 - 240V, 50/60Hz | Europe, etc. | G132-27 | Q22603xxxxx |

| | | | |
|---|---|---|--|
| Model: Model PL-P1 | | Date: 4-Aug-06 | No.: MG108013 |
| Modified Article: Knobs & Panel | | Prepared by: H.K. | |
| From: Technical Service Dept., GTS Division | | | |
| Reason for Modification: | <input type="checkbox"/> Parts catalog correction <input type="checkbox"/> To facilitate assembly <input type="checkbox"/> Part standardization | <input type="checkbox"/> Vendor change <input type="checkbox"/> To improve reliability <input type="checkbox"/> Other | <input checked="" type="checkbox"/> To meet standards (RoHS) |

| Old part number | New part number | Description | Q'ty | Int | Page | Index | Note |
|-----------------|-----------------|----------------------------|------|-----|------|-------|------|
| B0706895 | B1325836 | PANEL - INTERFACE | 1 | X/O | 19 | 10 | |
| B0706898 | AA141008 | PANEL KNOB SCREW | 2 | X/O | 19 | 13 | |
| G1085104 | G1085134 | KNOB SCREW:DRUM STAY:LOWER | 1 | X/O | 19 | 12 | |

Change:

The materials of the parts in the table were changed.

Reason:

RoHS compliance.

Note: The functions of these parts were not changed.

IMPORTANT:

- The materials for the parts were changed before the part numbers were changed. To make sure the correct parts are used on the correct machines, please handle the parts as follows:

Parts with the **old** P/N:
Parts with the **new** P/N:

Non-RoHS compliant parts
RoHS compliant parts

| | RoHS Compliant Parts | Non-RoHS Compliant Parts |
|------------------------------------|-------------------------|-----------------------------|
| RoHS Compliant Machines | OK | <u>DO NOT USE</u> |
| Non-RoHS Compliant Machines | OK | OK |

- Continue using** non-RoHS compliant parts on non-ROHS compliant machines **until the stock of these parts runs out**. Then, start using RoHS compliant parts on the non-RoHS compliant machines.
- DO NOT use** non-RoHS compliant parts on RoHS compliant machines.
Note: This is to make sure that all machines are in full compliance with the RoHS Directive.

| | | |
|--------------------|----------------|---------------|
| Model: Model PL-P1 | Date: 4-Aug-06 | No.: MG108013 |
|--------------------|----------------|---------------|

RCL (Japan) Production

| Model | V/Hz | Destination | Code | Serial Number |
|--|---------------------|--------------|---------|---------------|
| RICOH Aficio CL 1000N | 120V, 60Hz | USA, Canada | G108-17 | Q15603xxxxx |
| Gestetner:P7431cn Nashuatec:P7431cn Rex-Rotary:P7431cn | 220 - 240V, 50/60Hz | Europe, etc. | G108-22 | Q15603xxxxx |
| RICOH Aficio CL 1000N | 220 - 240V, 50/60Hz | Europe, etc. | G108-27 | Q15603xxxxx |
| RICOH Aficio CL 800 | 220 - 240V, 50/60Hz | China | G108-22 | |
| Gestetner:P7431c Nashuatec:P7431c Rex-Rotary:P7431c | 220 - 240V, 50/60Hz | Europe, etc. | G108-22 | |
| RICOH Aficio CL 800 | 220 - 240V, 50/60Hz | Europe, etc. | G108-27 | |

| | | | |
|---|---|---|---|
| Model: Model PL-P1 | | Date: 25-Aug-06 | No.: MG108014 |
| Modified Article: LV Power Supply (220V version only) | | Prepared by: H.K. | |
| From: Technical Service Dept., GTS Division | | | |
| Reason for Modification: | <input type="checkbox"/> Parts catalog correction <input type="checkbox"/> To facilitate assembly <input type="checkbox"/> Part standardization | <input type="checkbox"/> Vendor change <input type="checkbox"/> To improve reliability <input type="checkbox"/> Other | <input type="checkbox"/> To meet standards (RoHs) |

| Old part number | New part number | Description | Q'ty | Int | Page | Index | Note |
|-----------------|-----------------|-----------------------------|------|-----|------|-------|------|
| V128453 | V128676 | LV POWER SUPPLY (220V) ROHS | 1 | X/O | 21 | 3 | |

Change:

The materials of the parts in the table were changed.

Reason:

RoHS compliance.

Note: The functions of these parts were not changed.

IMPORTANT:

- The materials for the parts were changed before the part numbers were changed. To make sure the correct parts are used on the correct machines, please handle the parts as follows:

Parts with the **old** P/N:
Parts with the **new** P/N:

Non-RoHS compliant parts
RoHS compliant parts

| | RoHS Compliant Parts | Non-RoHS Compliant Parts |
|------------------------------------|-------------------------|-----------------------------|
| RoHS Compliant Machines | OK | <u>DO NOT USE</u> |
| Non-RoHS Compliant Machines | OK | OK |

- Continue using** non-RoHS compliant parts on non-ROHS compliant machines **until the stock of these parts runs out**. Then, start using RoHS compliant parts on the non-RoHS compliant machines.
- DO NOT use** non-RoHS compliant parts on RoHS compliant machines.
Note: This is to make sure that all machines are in full compliance with the RoHS Directive.

Model: Model PL-P1

Date: 25-Aug-06

No.: MG108014

RCL (Japan) Production

| Model | V/Hz | Destination | Code | Serial Number |
|--|---------------------|--------------|---------|---------------|
| RICOH Aficio CL 1000N | 120V, 60Hz | USA, Canada | G108-17 | |
| Gestetner:P7431cn Nashuatec:P7431cn Rex-Rotary:P7431cn | 220 - 240V, 50/60Hz | Europe, etc. | G108-22 | Q15603xxxxx |
| RICOH Aficio CL 1000N | 220 - 240V, 50/60Hz | Europe, etc. | G108-27 | Q15603xxxxx |
| RICOH Aficio CL 800 | 220 - 240V, 50/60Hz | China | G132-21 | Q22603xxxxx |
| Gestetner:P7431c Nashuatec:P7431c Rex-Rotary:P7431c | 220 - 240V, 50/60Hz | Europe, etc. | G132-22 | Q22603xxxxx |
| RICOH Aficio CL 800 | 220 - 240V, 50/60Hz | Europe, etc. | G132-27 | Q22603xxxxx |

| | | |
|--------------------|----------------|---------------|
| Model: Model PL-P1 | Date: 3-Oct-06 | No.: MG108015 |
|--------------------|----------------|---------------|

MB Reissue

The MB number was corrected (MG108014 → MG108015).

| | | | |
|---|---|---|--|
| Modified Article: Transfer Roller | | Prepared by: H.K. | |
| From: Technical Service Dept., GTS Division | | | |
| Reason for Modification: | <input type="checkbox"/> Parts catalog correction | <input checked="" type="checkbox"/> Vendor change | <input type="checkbox"/> To meet standards () |
| | <input type="checkbox"/> To facilitate assembly | <input type="checkbox"/> To improve reliability | |
| | <input type="checkbox"/> Part standardization | <input type="checkbox"/> Other | |

| Old part number | New part number | Description | Q'ty | Int | Page | Index | Note |
|-----------------|-----------------|---------------------------|------|-----|------|-------|------|
| V128488 | V128698 | TRANSFER ROLLER ASSY PU 1 | 1 | O/O | 13 | 2 | |

Change: The material of the transfer roller was changed.

Reason: Vendor change

| | | | |
|---|---|---|--|
| Model: Model PL-P1 | | Date: 30-Oct-06 | No.: MG108016 |
| Modified Article: Fusing Unit | | Prepared by: H.K. | |
| From: Technical Service Dept., GTS Division | | | |
| Reason for Modification: | <input type="checkbox"/> Parts catalog correction <input type="checkbox"/> To facilitate assembly <input type="checkbox"/> Part standardization | <input type="checkbox"/> Vendor change <input type="checkbox"/> To improve reliability <input type="checkbox"/> Other | <input checked="" type="checkbox"/> To meet standards (RoHS) |

| Old part number | New part number | Description | Q'ty | Int | Page | Index | Note |
|-----------------|-----------------|------------------------|------|-----|------|-------|------|
| V128622 | V128699 | FUSING UNIT (110V) FU2 | 1 | X/O | 11 | * | |
| V128623 | V128701 | FUSING UNIT (220V) FU2 | 1 | X/O | 11 | * | |

Change:

The materials of the parts in the table were changed.

Reason:

RoHS compliance.

Note: The functions of these parts were not changed.

IMPORTANT:

- The materials for the parts were changed before the part numbers were changed. To make sure the correct parts are used on the correct machines, please handle the parts as follows:

Parts with the **old** P/N: **Non-RoHS** compliant parts
 Parts with the **new** P/N: **RoHS** compliant parts

| | RoHS Compliant Parts | Non-RoHS Compliant Parts |
|------------------------------------|--------------------------------|------------------------------------|
| RoHS Compliant Machines | OK | <u>DO NOT USE</u> |
| Non-RoHS Compliant Machines | OK | OK |

- Continue using** non-RoHS compliant parts on non-RoHS compliant machines **until the stock of these parts runs out**. Then, start using RoHS compliant parts on the non-RoHS compliant machines.
- DO NOT use** non-RoHS compliant parts on RoHS compliant machines.
Note: This is to make sure that all machines are in full compliance with the RoHS Directive.

Model: Model PL-P1**Date:** 30-Oct-06**No.:** MG108016**RCL (Japan) Production**

| Model | V/Hz | Destination | Code | Serial Number |
|--|---------------------|--------------------|-------------|----------------------|
| RICOH Aficio CL 1000N | 120V, 60Hz | USA, Canada | G108-17 | Q1560700186 |
| Gestetner:P7431cn Nashuatec:P7431cn Rex-Rotary:P7431cn | 220 - 240V, 50/60Hz | Europe, etc. | G108-22 | Q1560700890 |
| RICOH Aficio CL 1000N | 220 - 240V, 50/60Hz | Europe, etc. | G108-27 | Q1560600335 |
| RICOH Aficio CL 800 | 220 - 240V, 50/60Hz | China | G132-21 | Q2260700049 |
| Gestetner:P7431c Nashuatec:P7431c Rex-Rotary:P7431c | 220 - 240V, 50/60Hz | Europe, etc. | G132-22 | Q22607xxxxx |
| RICOH Aficio CL 800 | 220 - 240V, 50/60Hz | Europe, etc. | G132-27 | Q2260600041 |

| | | | |
|---|---|---|--|
| Model: Model PL-P1 | | Date: 30-Oct-06 | No.: MG108017 |
| Modified Article: Operation Panel | | Prepared by: H.K. | |
| From: Technical Service Dept., GTS Division | | | |
| Reason for Modification: | <input type="checkbox"/> Parts catalog correction <input type="checkbox"/> To facilitate assembly <input type="checkbox"/> Part standardization | <input type="checkbox"/> Vendor change <input type="checkbox"/> To improve reliability <input type="checkbox"/> Other | <input checked="" type="checkbox"/> To meet standards (RoHS) |

| Old part number | New part number | Description | Q'ty | Int | Page | Index | Note |
|-----------------|-----------------|-------------------------|------|-----|------|-------|------|
| V128413 | V128702 | OP PANEL (P1b)(G108) | 1 | X/O | 3 | 8 | |
| V128639 | V128703 | OP PANEL RG (P1a)(G132) | 1 | X/O | 3 | 8 | |

Change:

The materials of the parts in the table were changed.

Reason:

RoHS compliance.

Note: The functions of these parts were not changed.

IMPORTANT:

- The materials for the parts were changed before the part numbers were changed. To make sure the correct parts are used on the correct machines, please handle the parts as follows:

Parts with the **old** P/N:
Parts with the **new** P/N:

Non-RoHS compliant parts
RoHS compliant parts

| | RoHS Compliant Parts | Non-RoHS Compliant Parts |
|------------------------------------|--------------------------------|------------------------------------|
| RoHS Compliant Machines | OK | <u>DO NOT USE</u> |
| Non-RoHS Compliant Machines | OK | OK |

- Continue using** non-RoHS compliant parts on non-RoHS compliant machines **until the stock of these parts runs out**. Then, start using RoHS compliant parts on the non-RoHS compliant machines.
- DO NOT use** non-RoHS compliant parts on RoHS compliant machines.
Note: This is to make sure that all machines are in full compliance with the RoHS Directive.

Model: Model PL-P1**Date:** 30-Oct-06**No.:** MG108017**RCL (Japan) Production**

| Model | V/Hz | Destination | Code | Serial Number |
|--|---------------------|--------------------|-------------|----------------------|
| RICOH Aficio CL 1000N | 120V, 60Hz | USA, Canada | G108-17 | Q1560700186 |
| Gestetner:P7431cn Nashuatec:P7431cn Rex-Rotary:P7431cn | 220 - 240V, 50/60Hz | Europe, etc. | G108-22 | Q1560700890 |
| RICOH Aficio CL 1000N | 220 - 240V, 50/60Hz | Europe, etc. | G108-27 | Q1560700001 |
| RICOH Aficio CL 800 | 220 - 240V, 50/60Hz | China | G132-21 | Q2260700049 |
| Gestetner:P7431c Nashuatec:P7431c Rex-Rotary:P7431c | 220 - 240V, 50/60Hz | Europe, etc. | G132-22 | Q22607xxxxx |
| RICOH Aficio CL 800 | 220 - 240V, 50/60Hz | Europe, etc. | G132-27 | Q2260600041 |

| | | | |
|---|---|--|---|
| Model: Model PL-P1 | | Date: 23-Apr-07 | No.: MG108018 |
| Modified Article: Cleaning Roller | | Prepared by: H.K. | |
| From: Technical Service Dept., GTS Division | | | |
| Reason for Modification: | <input type="checkbox"/> Parts catalog correction <input type="checkbox"/> To facilitate assembly <input type="checkbox"/> Part standardization | <input type="checkbox"/> Vendor change <input type="checkbox"/> To improve reliability <input checked="" type="checkbox"/> Other | <input type="checkbox"/> To meet standards () |

| Old part number | New part number | Description | Q'ty | Int | Page | Index | Note |
|-----------------|-----------------|----------------------|------|-----|------|-------|------|
| V128404 | V128696 | CLEANING ROLLER PU 1 | 1 | O/O | 3 | 2 | |

Change: The material used for the brush on the Cleaning Roller was changed from rayon to nylon.

Reason: The vendor stopped production of the rayon brush.

| | | | |
|---|---|---|--|
| Model: Model PL-P1 | | Date: 18-May-07 | No.: MG108019 |
| Modified Article: TR Cam Clutch | | Prepared by: H.K. | |
| From: Technical Service Dept., GTS Division | | | |
| Reason for Modification: | <input type="checkbox"/> Parts catalog correction <input type="checkbox"/> To facilitate assembly <input type="checkbox"/> Part standardization | <input type="checkbox"/> Vendor change <input type="checkbox"/> To improve reliability <input type="checkbox"/> Other | <input checked="" type="checkbox"/> To meet standards (RoHS) |

| Old part number | New part number | Description | Q'ty | Int | Page | Index | Note |
|-----------------|-----------------|-------------------|------|-----|------|-------|----------|
| V126639 | V126788 | TR CAM CLUTCH 2PU | 1 | X/O | 17 | 7 | See note |

Note:

- The new P/N is listed in the Parts Catalog 2nd Edition.

Change: The materials of the parts in the table were changed.

Reason: RoHS compliance.

Note:

- The function of this part was not changed.

IMPORTANT:

- The materials for the parts were changed before the part numbers were changed. To make sure the correct parts are used on the correct machines, please handle the parts as follows:

Parts with the **old** P/N:
Parts with the **new** P/N:

Non-RoHS compliant parts
RoHS compliant parts

| | RoHS Compliant Parts | Non-RoHS Compliant Parts |
|------------------------------------|--------------------------------|------------------------------------|
| RoHS Compliant Machines | OK | <u>DO NOT USE</u> |
| Non-RoHS Compliant Machines | OK | OK |

- **Continue using** non-RoHS compliant parts on non-ROHS compliant machines **until the stock of these parts runs out**. Then, start using RoHS compliant parts on the non-RoHS compliant machines.
- **DO NOT use** non-RoHS compliant parts on RoHS compliant machines.
Note: This is to make sure that all machines are in full compliance with the RoHS Directive.

Model: Model PL-P1

Date: 18-May-07

No.: MG108019

RCL (Japan) Production

| Model | V/Hz | Destination | Code | Serial Number |
|--|---------------------|--------------|---------|---------------|
| RICOH Aficio CL 1000N | 120V, 60Hz | USA, Canada | G108-17 | Q15603xxxxx |
| Gestetner:P7431cn Nashuatec:P7431cn Rex-Rotary:P7431cn | 220 - 240V, 50/60Hz | Europe, etc. | G108-22 | Q15603xxxxx |
| RICOH Aficio CL 1000N | 220 - 240V, 50/60Hz | Europe, etc. | G108-27 | Q15603xxxxx |
| RICOH Aficio CL 800 | 220 - 240V, 50/60Hz | China | G132-21 | Q22603xxxxx |
| Gestetner:P7431c Nashuatec:P7431c Rex-Rotary:P7431c | 220 - 240V, 50/60Hz | Europe, etc. | G132-22 | Q22603xxxxx |
| RICOH Aficio CL 800 | 220 - 240V, 50/60Hz | Europe, etc. | G132-27 | Q22603xxxxx |

| | | | |
|---|--|---|---|
| Model: Model PL-P1 (110V version only) | | Date: 31-May-07 | No.: MG108020 |
| Modified Article: LV Power Supply | | Prepared by: H.K. | |
| From: Technical Service Dept., GTS Division | | | |
| Reason for Modification: | <input type="checkbox"/> Parts catalog correction | <input type="checkbox"/> Vendor change | <input type="checkbox"/> To meet standards () |
| | <input type="checkbox"/> To facilitate assembly | <input type="checkbox"/> To improve reliability | |
| | <input checked="" type="checkbox"/> Part standardization | <input type="checkbox"/> Other | |

| Old part number | New part number | Description | Q'ty | Int | Page | Index | Note |
|-----------------|-----------------|-------------------------|------|-----|------|-------|------|
| V128452 | V128675 | LV POWER SUPPLY (110 V) | 1 | O/O | 21 | 3 | |

Reason: Part standardization
Change: Material

RCL (Japan) Production

[illegible]

Reissued: 19-May-08

| | | |
|--------------------|-----------------|----------------|
| Model: Model PL-P1 | Date: 22-Oct-07 | No.: MG108021a |
|--------------------|-----------------|----------------|

MB Reissue

The items in ***bold italics*** were corrected or added.

| | | | |
|--|--|-------------------|--|
| Modified Article: Transfer Unit | | Prepared by: H.K. | |
| From: 1st Tech. Support Sec. Service Support Dept. | | | |
| Reason for Modification: | <input type="checkbox"/> Parts catalog correction <input checked="" type="checkbox"/> Vendor change <input type="checkbox"/> Other | | |
| | <input type="checkbox"/> To facilitate assembly <input type="checkbox"/> To improve reliability <input type="checkbox"/> To meet standards | | |
| | <input type="checkbox"/> Part standardization <input type="checkbox"/> Product Safety () | | |

| Old part number | New part number | Description | Q'ty | Int | Page | Index | Note |
|-----------------|-----------------------|--------------------|-------|-----|------|-------|------|
| V128463 | <i>V128718</i> | TRANSFER UNIT PU 2 | 1 - 1 | O/O | 9 | 8 | |

Reason & change: Vendor change:

| | | | |
|--|--|-------------------|---------------|
| Model: Model PL-P1 | | Date: 20-Dec-07 | No.: MG108022 |
| Modified Article: Regist Ground Spring | | Prepared by: H.K. | |
| From: 1st Tech. Support Sec. Service Support Dept. | | | |
| Reason for Modification: | <input type="checkbox"/> Parts catalog correction <input type="checkbox"/> Vendor change <input checked="" type="checkbox"/> Other <input type="checkbox"/> To facilitate assembly <input type="checkbox"/> To improve reliability <input type="checkbox"/> To meet standards <input type="checkbox"/> Part standardization <input type="checkbox"/> Product Safety () | | |

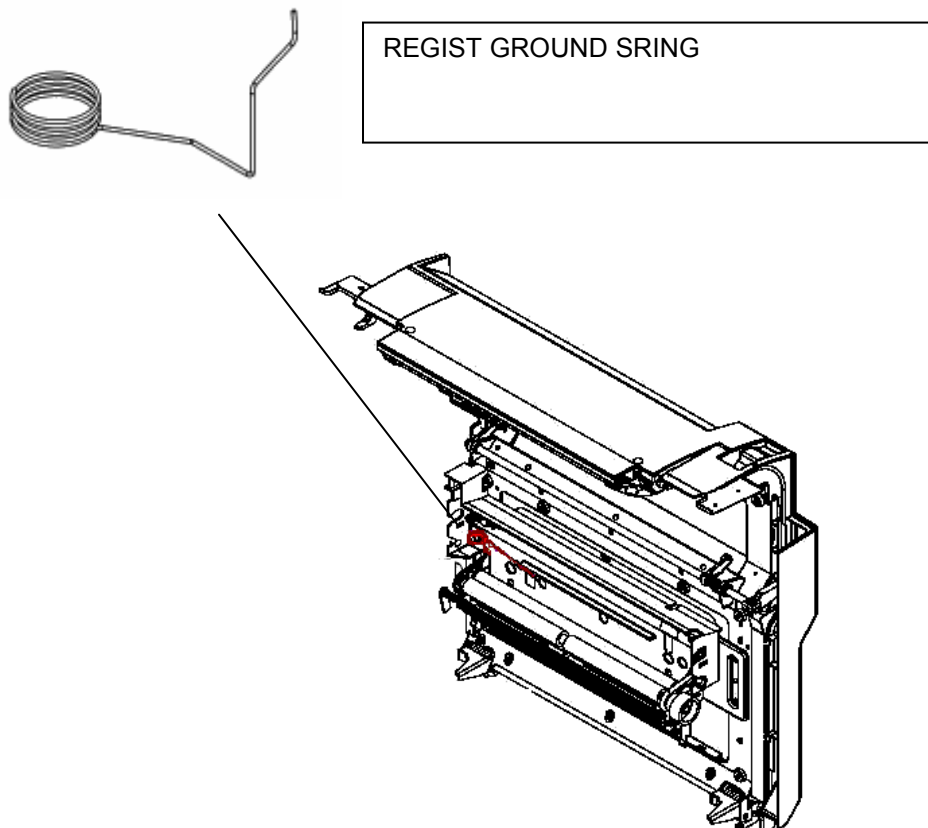
| Old part number | New part number | Description | Q'ty | Int | Page | Index | Note |
|-----------------|-----------------|---------------------|-------|-----|------|-------|------|
| | V121382 | REGIST GROUND SRING | 0 - 1 | | 15 | *13 | |
| | | | | | | | |

*:New index

Change: The part in the table was added.

Reason: Requests were received from the field.

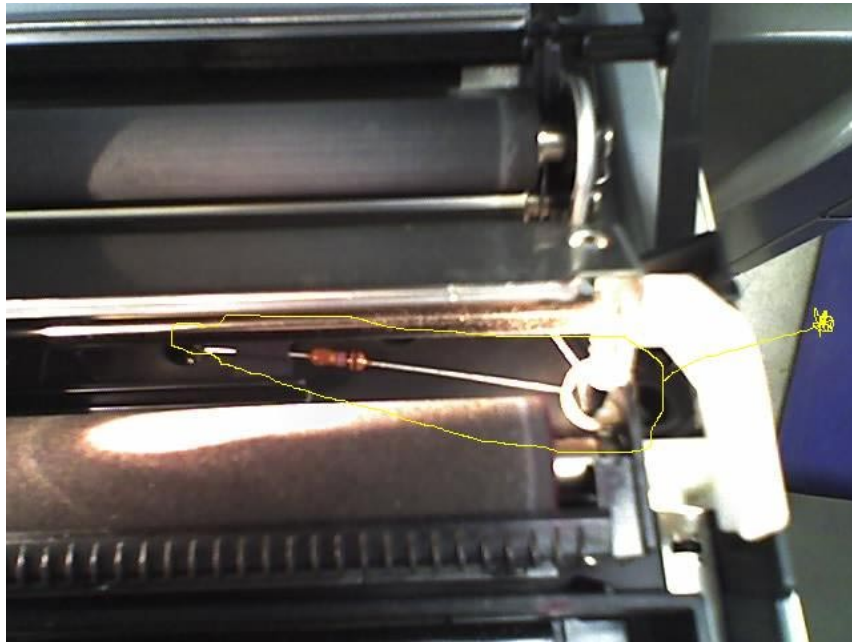
Important: Handle this spring carefully. Make sure not to deform or bend the spring, as this can cause jams, noise, or poor image transfer.



Model: Model PL-P1

Date: 20-Dec-07

No.: MG108022



| | | | |
|--|---|-------------------|---------------|
| Model: Model PL-P1 | | Date: 14-Feb-08 | No.: MG108023 |
| Modified Article: Laser Ass'y | | Prepared by: H.K. | |
| From: 1st Tech. Support Sec. Service Support Dept. | | | |
| Reason for Modification: | <input type="checkbox"/> Parts catalog correction <input checked="" type="checkbox"/> Vendor change <input type="checkbox"/> Other <input type="checkbox"/> To facilitate assembly <input type="checkbox"/> To improve reliability <input type="checkbox"/> To meet standards <input type="checkbox"/> Part standardization <input type="checkbox"/> Product Safety () | | |

| Old part number | New part number | Description | Q'ty | Int | Page | Index | Note |
|-----------------|-----------------|-----------------|-------|-----|------|-------|------|
| V128437 | V128708 | LASER ASS'Y PU2 | 1 - 1 | O/O | 7 | 8 | |

Reason & Change: Vendor change

| | | | |
|---|---|--|--|
| Model: Model PL-P1 | | Date: 31-Mar-08 | No.: MG108024 |
| Modified Article: Main Motor | | Prepared by: H.K. | |
| From: Technical Service Dept., GTS Division | | | |
| Reason for Modification: | <input type="checkbox"/> Parts catalog correction <input type="checkbox"/> To facilitate assembly <input type="checkbox"/> Part standardization | <input checked="" type="checkbox"/> Vendor change <input type="checkbox"/> To improve reliability <input type="checkbox"/> Other | <input type="checkbox"/> To meet standards () |

| Old part number | New part number | Description | Q'ty | Int | Page | Index | Note |
|-----------------|-----------------|-----------------------|------|-----|------|-------|------|
| V128423 | V128717 | MAIN MOTOR PU - DC53W | 1 | O/O | 17 | 11 | |

Due to a vendor change, the part number has been changed.

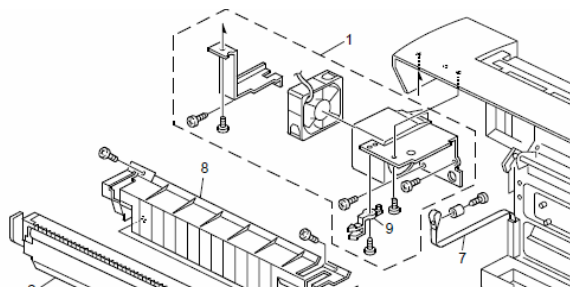
| | | | |
|--|---|-------------------|---------------|
| Model: Model PL-P1 | | Date: 10-Apr-08 | No.: MG108025 |
| Modified Article: Fan Support & Lock Lever | | Prepared by: H.K. | |
| From: 1st Tech. Support Sec. Service Support Dept. | | | |
| Reason for Modification: | <input checked="" type="checkbox"/> Parts catalog correction <input type="checkbox"/> Vendor change <input type="checkbox"/> Other <input type="checkbox"/> To facilitate assembly <input type="checkbox"/> To improve reliability <input type="checkbox"/> To meet standards <input type="checkbox"/> Part standardization <input type="checkbox"/> Product Safety () | | |

| Old part number | New part number | Description | Q'ty | Int | Page | Index | Note |
|-----------------|-----------------|-----------------------|-------|-----|------|-------|------|
| | V128722 | PP5F FAN SUPPORT | 0 - 1 | | 13 | *10 | |
| | V128721 | SL5F LOCK LEVER ASS'Y | 0 - 1 | | 3 | *23 | |

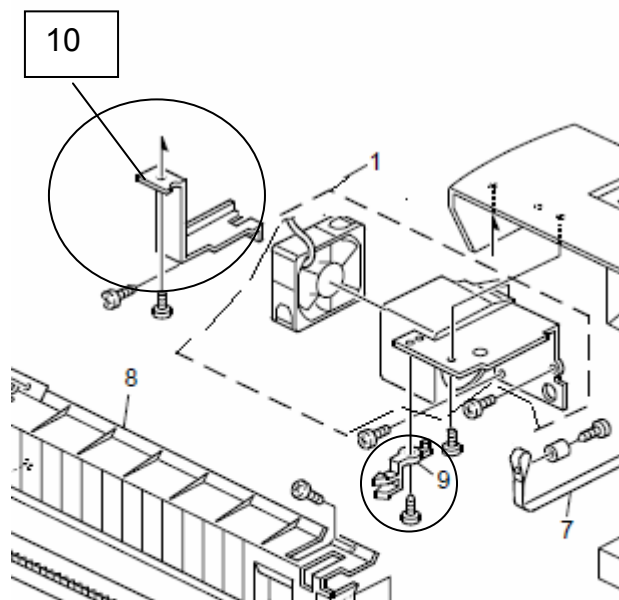
*: New index

Change/Reason:

- 1) The parts in the table were missing from the Parts Catalog.
- 2) The illustration below was corrected (index #10 and circled areas were added).



Incorrect



Correct

page12

Model: Model PL-P1

Date: 10-Apr-08

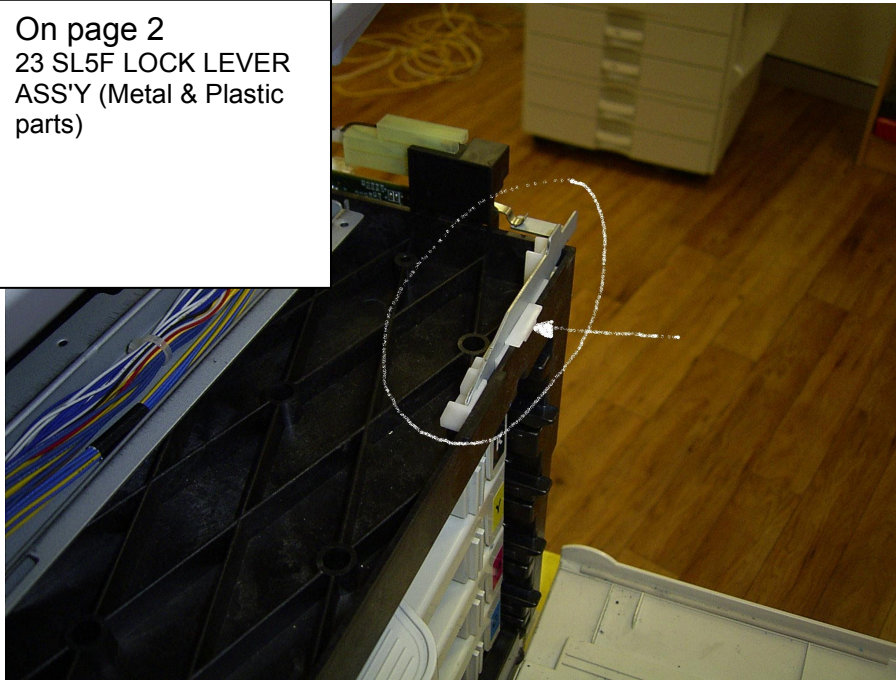
No.: MG108025

Pg. 2

P/N V128721 SL5F LOCK LEVER ASS'Y (Metal & Plastic parts)

Index #23

On page 2
23 SL5F LOCK LEVER
ASS'Y (Metal & Plastic
parts)

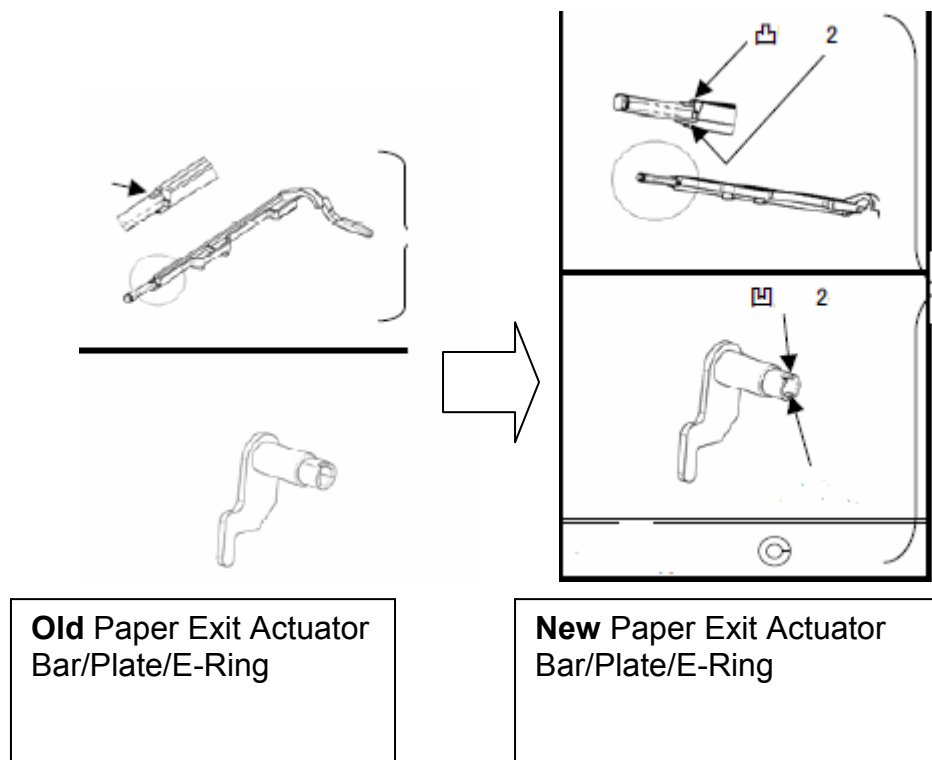


| | | | |
|--|---|-------------------|---------------|
| Model: Model PL-P1 | | Date: 21-Apr-08 | No.: MG108026 |
| Modified Article: Paper Exit Actuator | | Prepared by: H.K. | |
| From: 1st Tech. Support Sec. Service Support Dept. | | | |
| Reason for Modification: | <input type="checkbox"/> Parts catalog correction <input type="checkbox"/> Vendor change <input type="checkbox"/> Other <input checked="" type="checkbox"/> To facilitate assembly <input type="checkbox"/> To improve reliability <input type="checkbox"/> To meet standards <input type="checkbox"/> Part standardization <input type="checkbox"/> Product Safety () | | |

| Old part number | New part number | Description | Q'ty | Int | Page | Index | Note |
|-----------------|-----------------|---------------------------|-------|-----|------|-------|------|
| V128497 | V128720 | PAPER EXIT ACTUATOR PU(2) | 1 - 1 | X/O | 15 | 4 | |

Change:

- 1) The shapes of the paper exit actuator (V128497) and bar (not a service part) were changed.
- 2) The new actuator and new bar were combined into one service part (V128720).

Reason: To facilitate assembly.


Model: Model PL-P1

Date: 21-Apr-08

No.: MG108026

RCL (Japan) Production

| Model | V/Hz | Destination | Code | Serial Number |
|--|---------------------|--------------|---------|------------------|
| RICOH Aficio CL 1000N | 120V, 60Hz | USA, Canada | G108-17 | Spare Parts Only |
| Gestetner:P7431cn Nashuatec:P7431cn Rex-Rotarv:P7431cn | 220 - 240V, 50/60Hz | Europe, etc. | G108-22 | Spare Parts Only |
| RICOH Aficio CL 1000N | 220 - 240V, 50/60Hz | Europe, etc. | G108-27 | Spare Parts Only |
| RICOH Aficio CL 800 | 220 - 240V, 50/60Hz | China | G132-21 | Spare Parts Only |
| Gestetner:P7431c Nashuatec:P7431c Rex-Rotarv:P7431c | 220 - 240V, 50/60Hz | Europe, etc. | G132-22 | Spare Parts Only |
| RICOH Aficio CL 800 | 220 - 240V, 50/60Hz | Europe, etc. | G132-27 | Spare Parts Only |

| | | | |
|---|---|--|--|
| Model: Model PL-P1 | | Date: 9-Jun-08 | No.: MG108027 |
| Modified Article: Lock Knob and Top Fuser Cover | | Prepared by: H.K. | |
| From: Technical Service Dept., GTS Division | | | |
| Reason for Modification: | <input type="checkbox"/> Parts catalog correction <input type="checkbox"/> To facilitate assembly <input type="checkbox"/> Part standardization | <input type="checkbox"/> Vendor change <input type="checkbox"/> To improve reliability <input checked="" type="checkbox"/> Other | <input type="checkbox"/> To meet standards () |

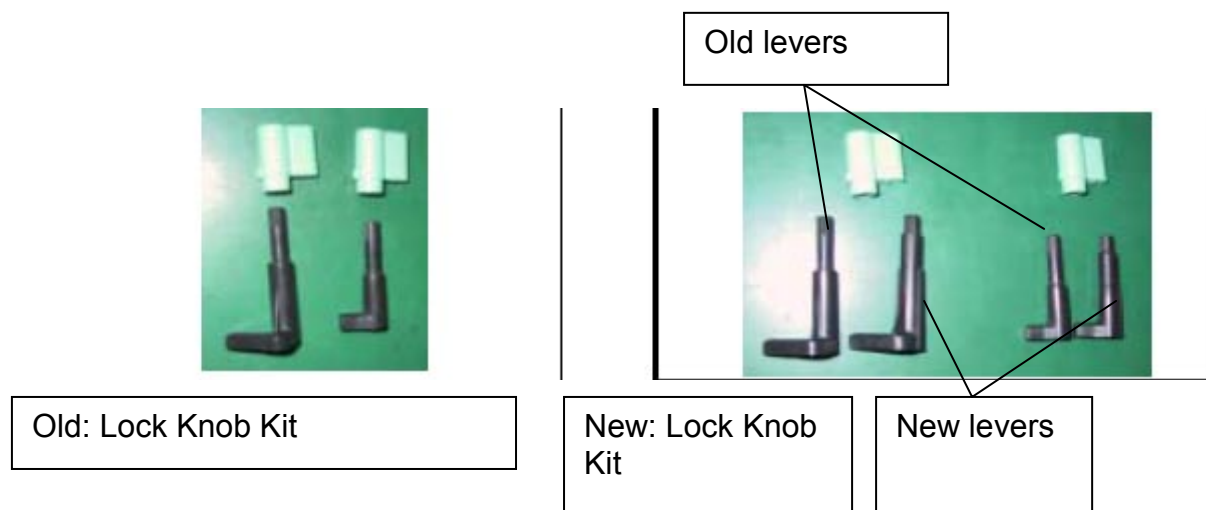
| Old part number | New part number | Description | Q'ty | Int | Page | Index | Note |
|-----------------|-----------------|------------------------|------|-----|------|-------|------|
| V128480 | V128711 | LOCK KNOB KIT | 1 | X/O | 11 | 2 | |
| V128606 | G1627370 | TOP FUSER COVER | 1 | X/X | 11 | 1 | |
| V128699 | V128713 | FUSING UNIT (110V) FU2 | 1 | O/O | 11 | * | |
| V128701 | V128715 | FUSING UNIT (220V) FU2 | 1 | O/O | 11 | * | |

Change: The shapes of the fusing cover projection and lock lever were changed.

Reason: To increase the durability of these parts.

Important: If the old top fuser cover needs to be replaced, install the new top fuser cover **together with** the new lock levers in the new lock knob kit.

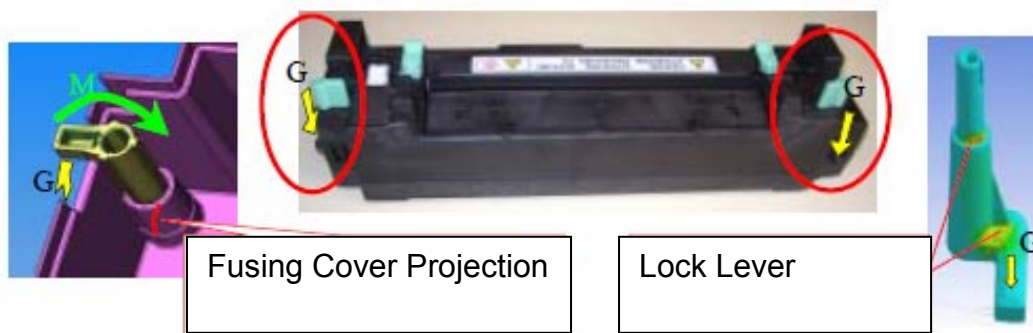
Note: The new lock knob kit contains both the old and new lock levers, so that you can replace the lock knob.



Model: Model PL-P1

Date: 9-Jun-08

No.: MG108027



| | | |
|-----|-------------------|---|
| Old | | |
| New | <p>Ribs added</p> | <p>Shape changed</p> <p>A</p> <p>B</p> <p>C</p> |

A: Shape changed
B: Rib added
C: Rib extended

RCL (Japan) Production

| Model | V/Hz | Destination | Code | Serial Number |
|-----------------------|---------------------|--------------|---------|------------------|
| RICOH Aficio CL 1000N | 120V, 60Hz | USA, Canada | G108-17 | Spare parts only |
| Gestetner:P7431cn | 220 - 240V, 50/60Hz | Europe, etc. | G108-22 | Spare parts only |
| Nashuatec:P7431cn | | | | |
| Rex-Rotary:P7431cn | | | | |
| RICOH Aficio CL 1000N | 220 - 240V, 50/60Hz | Europe, etc. | G108-27 | Spare parts only |
| RICOH Aficio CL 800 | 220 - 240V, 50/60Hz | China | G132-21 | Spare parts only |
| Gestetner:P7431c | 220 - 240V, 50/60Hz | Europe, etc. | G132-22 | Spare parts only |
| Nashuatec:P7431c | | | | |
| Rex-Rotary:P7431c | | | | |
| RICOH Aficio CL 800 | 220 - 240V, 50/60Hz | Europe, etc. | G132-27 | Spare parts only |

| | | | |
|--|--|---|--|
| Model: Model PL-P1b (G108 only) | | Date:22-Oct-08 | No.: MG108028 |
| Modified Article: HDD Unit | | Prepared by: H.K. | |
| From: 1st Tech. Support Sec. Service Support Dept. | | | |
| Reason for Modification: | <input checked="" type="checkbox"/> Parts catalog correction | <input checked="" type="checkbox"/> Vendor change | <input type="checkbox"/> Other |
| | <input type="checkbox"/> To facilitate assembly | <input type="checkbox"/> To improve reliability | <input type="checkbox"/> To meet standards |
| | <input type="checkbox"/> Part standardization | <input type="checkbox"/> Product Safety | () |
| | | | |

| Old part number | New part number | Description | Q'ty | Int | Page | Index | Note |
|-----------------|-----------------|---------------------------|-------|-----|------|-------|------|
| B0955763 | B0955764 | HD:FUJITSU:MHW2040AT:ROHS | 1 - 1 | O/O | 19 | *17 | |

*: New index

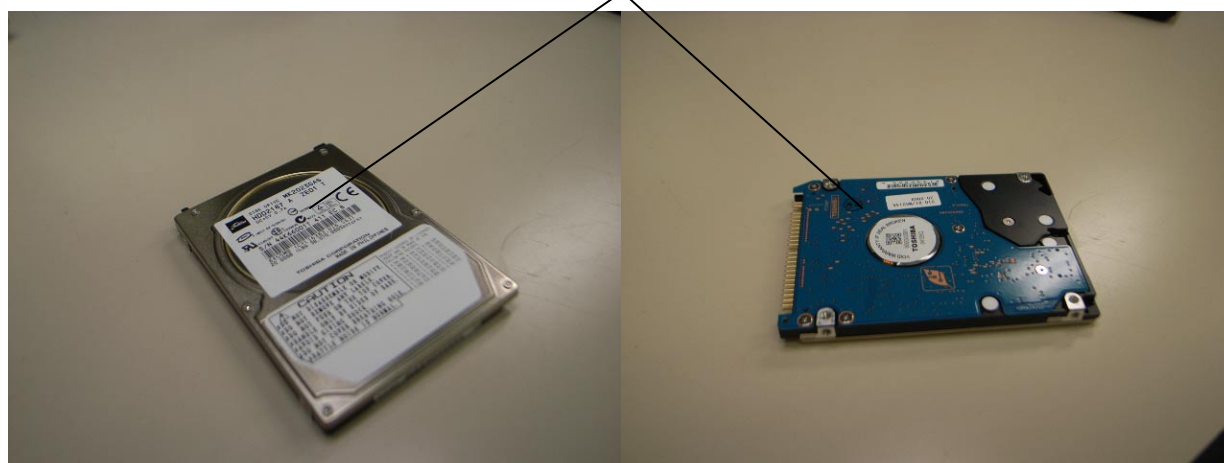
Change/Reason: Vendor change (to a Fujitsu-made HDD). The old part number was missing from the Parts Catalog.

Important:

- 1) To use the new HDD, you need to install all of the following firmware together as a set:

System v1.08 or later
Printer v1.08 or later

HDD



RCL (Japan) Production

| Model | V/Hz | Destination | Code | Serial Number |
|--|---------------------|--------------|---------|------------------|
| RICOH Aficio CL 1000N | 120V, 60Hz | USA, Canada | G108-17 | Spare Parts Only |
| Gestetner:P7431cn Nashuatec:P7431cn Rex-Rotary:P7431cn | 220 - 240V, 50/60Hz | Europe, etc. | G108-22 | Spare Parts Only |
| RICOH Aficio CL 1000N | 220 - 240V, 50/60Hz | Europe, etc. | G108-27 | Spare Parts Only |
| RICOH Aficio CL 800 | 220 - 240V, 50/60Hz | China | G132-21 | |
| Gestetner:P7431c | 220 - 240V, 50/60Hz | Europe, etc. | G132-22 | |
| Nashuatec:P7431c | | | | |
| Rex-Rotary:P7431c | | | | |
| RICOH Aficio CL 800 | 120V, 60Hz | Europe, etc. | G132-27 | |

| | | | |
|--|---|-------------------|---------------|
| Model: Model PL-P1 | | Date: 9-Dec-08 | No.: MG108029 |
| Modified Article: Cleaning Roller Cover | | Prepared by: H.K. | |
| From: 1st Tech. Support Sec. Service Support Dept. | | | |
| Reason for Modification: | <input type="checkbox"/> Parts catalog correction <input checked="" type="checkbox"/> Vendor change <input type="checkbox"/> Other <input type="checkbox"/> To facilitate assembly <input type="checkbox"/> To improve reliability <input type="checkbox"/> To meet standards <input type="checkbox"/> Part standardization <input type="checkbox"/> Product Safety () | | |

| Old part number | New part number | Description | Q'ty | Int | Page | Index | Note |
|-----------------|-----------------|--------------------------|-------|-----|------|-------|------|
| V128408 | V128664 | CLEANING ROLLER COVER PU | 1 - 1 | O/O | 3 | 1 | |

Due to vendor change, the part number has been changed.



Part Change Information List

Date: March 18, 2009

| Model | Code | PCIL Number | PCIL Correction | Old part number | New part number | Description | Old Q'ty | New Q'ty | Int | 3DPC | Page | Index | Set | Set Int | RTB | Note | Ref Number |
|-------------|------|----------------|--------------------|--------------------|--------------------|-----------------------|----------|----------|-----|------|------|-------|-----|---------|-----|------|------------|
| Model PL-P1 | G108 | 200903 | | V128444 | V128705 | WASTE TONER AUGER PU2 | 1 | 1 | O/O | | 3 | 22 | | | | | T0603903 |
| Model PL-P1 | G132 | 200903 | | V128444 | V128705 | WASTE TONER AUGER PU2 | 1 | 1 | O/O | | 3 | 22 | | | | | T0603903 |



Part Change Information List

Date: April 30, 2010

| Model | Code | PCIL Nr. | PCIL Correction | Old part number | New part number | Description | Old Q'ty | New Q'ty | Int | 3DPC | Page | Index | Set | Set Int | RTB | Note | Ref. Nr. | ECN Nr. |
|-------|------|----------|--------------------|--------------------|--------------------|-----------------------|----------|----------|-----|------|------|-------|-----|---------|-----|------|----------|---------|
| PL-P1 | G108 | 201004 | | V128410 | V128723 | PAPER CASSETTE(A4)PU2 | 1 | 1 | O/O | | 5 | * | | | | | V1000129 | |
| PL-P1 | G132 | 201004 | | V128410 | V128723 | PAPER CASSETTE(A4)PU2 | 1 | 1 | O/O | | 5 | * | | | | | V1000129 | |