

Model: Model CM-P1		Date: 5-Sep-05	No.: MG144001
Modified Article: ACTUATOR - FEED		Prepared by: T. Shintani	
From: 1st Technical Support Sec. Service Support Dept.			
Reason for Modification:	<input checked="" type="checkbox"/> Parts catalog correction <input type="checkbox"/> To facilitate assembly <input type="checkbox"/> Part standardization	<input type="checkbox"/> Vendor change <input type="checkbox"/> To improve reliability <input type="checkbox"/> Other	<input type="checkbox"/> To meet standards ()
Modification Schedule:	From first mass production.		

<G144 > (Model CM-P1)

Old part number	New part number	Description	Q'ty	Int	Page	Index	Note
G1449546	G1449608	ACTUATOR - FEED	1→1	1	2-5	11	
G1449551	B2739541	PAPER PICK-UP ASS'Y	1→1	1	2-5 / 3-8	17 / 3	

*This change applies only to the part number modification. This was done for parts number management.

Reissued: 24-Jul-06

Model: Model CM-P1	Date: 19-Jul-06	No.: MG144002a
--------------------	-----------------	----------------

MB Correction

The items in bold italics have been corrected or added.

Modified Article: Parts catalog correction		Prepared by: T. Shintani	
From: 1st Technical Support Sec. Service Support Dept.			
Reason for Modification:	<input checked="" type="checkbox"/> Parts catalog correction <input type="checkbox"/> To facilitate assembly <input type="checkbox"/> Part standardization	<input type="checkbox"/> Vendor change <input type="checkbox"/> To improve reliability <input type="checkbox"/> Other	<input type="checkbox"/> To meet standards ()
Modification Schedule:	From first mass production.		

Change: The materials of the following parts were changed.

Reason: To comply with the RoHS Directive.

Note: The Parts Catalog will be reissued soon. See the catalog for more details.

Old Part Number	New Part Number	Part Name
G1449500	G1449650	REAR COVER - OPTION
G1449501	G1449651	TOP COVER
G1449502	G1449652	EXTENSION - PAPER
G1449503	G1449653	OP- SPRING
G1449504	G1449654	OP - LED
G1449505	G1449655	BUSHING -PAPER
G1449506	G1449656	LEFT COVER
G1449507	G1449657	RIGHT COVER
G1449508	G1449658	REAR COVER
G1449509	G1449659	FACE UP DOOR
G1449511	G1449660	REAR OPEN COVER
G1449512	G1449661	FRONT COVER
G1449513	G1449662	KNOB - FRONT COVER
G1449514	G1449663	KNOB HOLDER - FRONT
G1449515	G1449664	EXTENSION - BYPASS
G1449516	G1449665	ADJUSTMENT - DOCUMEN
G1449517	G1449666	ADJUSTMENT - DOCUMEN
G1449518	G1449667	DOCUMENT FEEDER
G1449519	G1449668	GEAR - DOCUMENT
G1449520	G1449669	CASE - DOCUMENT
G1449521	G1449670	TRAY LINE - BYPASS
G1449522	G1449671	SPRING - KNOB
G1449523	G1449672	FRONT FRAME

Reissued: 24-Jul-06

Model: Model CM-P1	Date: 19-Jul-06	No.: MG144002a
--------------------	-----------------	----------------

G1449524	G1449673	REAR COVER - PSU
G1449525	G1449674	OP - BOARD
G1449526	G1449675	MAIN BOARD 110V
G1449607	G1449676	MAIN BOARD 220V
G1449527	G1449677	PSU - 200V
G1449528	G1449678	PSU - 100V
G1449529	G1449679	SHIELD PLATE
G1449530	G1449680	NCU BRACKET
G1459501	G1449681	NCU
G1449531	G1449682	TRANSFER ROLLER
G1449532	G1449683	LASER UNIT
G1449534	G1449684	HARNESS - LSU
G1449535	G1449685	CASSETTE ASS'Y
G1449536	G1449686	HARNESS - RX DRIVE
G1449537	G1449687	TRANSFER GUIDE UP
G1449538	G1449688	TRANSFER GUIDE
G1449540	G1449689	RUBBER FOOT FRONT
G1449541	G1449690	MEC TERMINAL
G1449543	G1449691	PLATE GUIDE RIGHT
G1449544	G1449692	SPRING - GUIDE
G1449545	G1449693	PLATE GUIDE LEFT
G1449608	G1449694	ACTUATOR - FEED
G1449547	G1449695	ACTUATOR - MANUAL
G1449548	G1449696	FEED ROLLER
G1449549	G1449697	BUSHING - FEED
B2739541	G1449698	PAPER PICK - UP
G1449552	G1449699	EARTH - TRANSFER
G1449553	G1449700	HOLDER - QUENCHIN
G1449554	G1449701	SPRING - TRANSFER
G1449555	G1449702	BUSHING - TRANSFER
G1449556	G1449703	BUSHING - IDLE
G1449557	G1449704	CAM - PICKUP
G1449558	G1449705	CAM - PICKUP
G1449559	G1449706	PICK - UP GEAR ASS'Y
G1449560	G1449707	BRACKET - FEED
G1449569	G1449708	BUSHING - PICKUP
G1449571	G1449709	PCB - QUENCHING
G1449573	G1449710	IDLE - PICKUP

Reissued: 24-Jul-06

Model: Model CM-P1	Date: 19-Jul-06	No.: MG144002a
--------------------	-----------------	----------------

B1739611	G1449711	PAPER STACK - EXT
G1449575	G1449712	GEAR - EXIT ROLLE
G1449578	G1449713	RACK - EXIT ROLLE
G1449579	G1449714	EXIT SENSOR
G1449580	G1449715	COOLING FAN
G1449581	G1449716	MP ASS'Y
G1449582	G1449717	SOLENOID - MP ASS'Y
G1449574	G1449718	BUSHING - MP ASS'Y
G1449572	G1449719	STOPPER PICK - UP
G1449583	G1449720	FRICTION PAD HOLDER
G1449568	G1449721	IDEAL GEAR MA ASS'Y
G1449584	G1449722	IDEL FEED ROLLER
G1449585	G1449723	PICK-UP ROLLER
G1449586	G1449724	FRICTION PAD
G1449588	G1449725	THERMISTOR
G1449589	G1449726	BUSHING HEAT ROLLER
G1449590	G1449727	PRESSER ROLLER
G1449591	G1449728	BEARING PRESSER
G1449592	G1449729	SPRING - BEARING
G1449593	G1449730	HEAT ROLLER BUSHING
G1449594	G1449731	HALOGEN LAMP 110
G1449595	G1449732	HALOGEN LAMP 220V
G1449533	G1449733	RX DRIVE ASS'Y
G1449596	G1449734	GEAR 53/26
G1449597	G1449735	GEAR 103/41
G1449598	G1449736	GEAR 90/31
G1449599	G1449737	STEPPING MOTOR 15
G1449535	G1449738	CASSETTE ASS'Y
G1449600	G1449739	EXTENSION - END
G1449602	G1449740	FRICTION PAD ASS'Y
G1449603	G1449741	SPRING - FRICTION
G1449604	G1449742	COVER CASSETTE
G1449605	G1449743	LEVER - PAPER INDICA
G1449539	G1449744	TRANSFER GUIDE
G1449576	H9149725	EXIT ROLLER
G1449596	G1449746	GEAR 53/26
G1449567	G1449747	FEED SHAFT GEAR
G1449550	G1449748	FEED SHAFT

Reissued: 24-Jul-06

Model: Model CM-P1	Date: 19-Jul-06	No.: MG144002a
--------------------	-----------------	----------------

G1449570	G1449749	SHAFT PICK-UP ROLLER
G1449542	G1449750	CASSETTE COCKER
G1449577	G1449751	UBBER - EXIT
G8449501	G8449650	COVER CASSETTE
G8449502	G8449651	LEFT COVER - OPTION
G8449503	G8449652	RIGHT COVER - OPTION
G8449504	G8449653	REAR COVER - OPTION
H2389506	H2389653	SENSOR BOARD
H2389507	H2389654	PFU BOARD
H2389511	H2389656	PFU MOTOR ASS'Y
H2389512	H2389657	SETPPING MOTOR 15
H9149514	H9149665	HARNESS - MAIN BOARD
B1739621	H9149701	ACTUATOR - COVER
B1739626	H9149703	ACTUATOR - PAPER
B1739631	H9149706	SPONGE ROLLER - PICK
B1739636	H9149708	LENS - QUENCHING
B1739638	H9149709	FEED ROLLER
B1739639	H9149710	BUSHING - TRANSFE
B1739641	H9149711	IDLE SHAFT - FEED
B1739647	H9149713	SOLENOID - BYPASS
B1739661	H9149719	SIDE FENSE - L
B1739662	H9149720	SIDE FENCE - R
G1449601	H9149722	END FENSE
G1449601	H9149724	END FENSE
H9149557	H9149725	EXIT ROLLER POLE
B1739602	B2739708	PLATEN COVER SENSOR
B2739541	B2739716	PAPER PICK - UP
B1739651	B2739719	FEED CLUTCH ASS'Y
H9149555	B2739732	SPRING - LOCKER P

Reissued: 24-Jul-06

Model: Model CM-P1	Date: 19-Jul-03	No.: MG144003a
--------------------	-----------------	----------------

MB Correction

The items in bold italics have been corrected or added.

Modified Article: Exit roller pole		Prepared by: T. Shintani	
From: 1st Technical Support Sec. Service Support Dept.			
Reason for Modification:	<input checked="" type="checkbox"/> Parts catalog correction	<input type="checkbox"/> Vendor change	<input type="checkbox"/> To meet standards ()
	<input type="checkbox"/> To facilitate assembly	<input type="checkbox"/> To improve reliability	
	<input type="checkbox"/> Part standardization	<input type="checkbox"/> Other	
Modification Schedule:	From first mass production.		

<G144 > (Model CM-P1)

OLD part number	NEW part number	Description	Q'ty	Int	Page	Index	Note
G1449576	H9149725	Exit roller pole	1→1	-	6	45	

Change/Reason: The part number in the Parts Catalog was corrected.

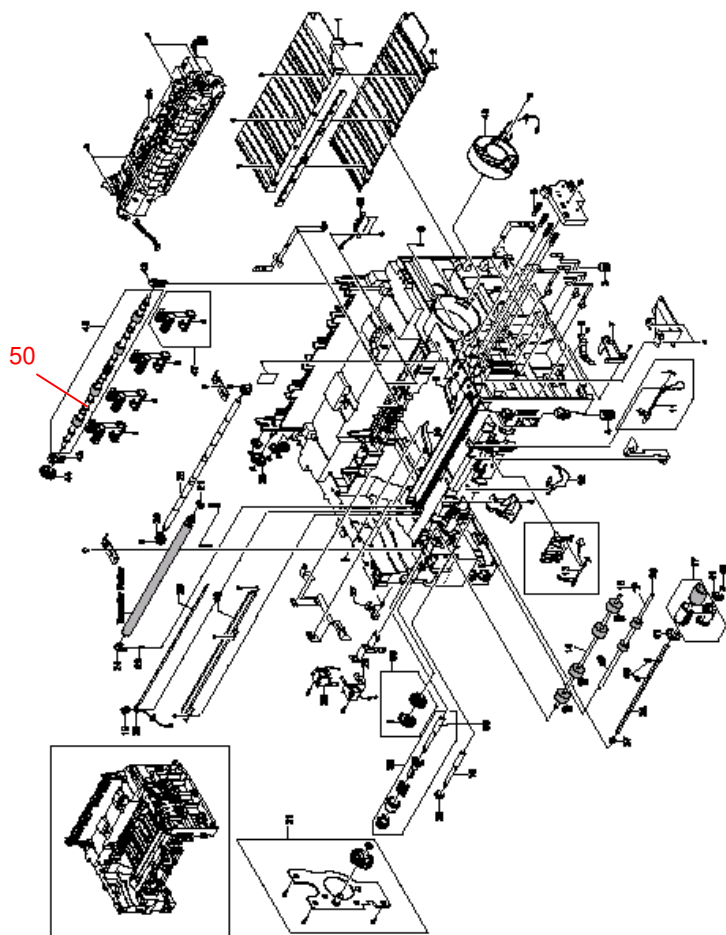
Model: Model CM-P1		Date: 13-Sep-06	No.: MG144004
Modified Article: Parts catalog correction		Prepared by: T. Shintani	
From: 1st Technical Support Sec. Service Support Dept.			
Reason for Modification:	<input checked="" type="checkbox"/> Parts catalog correction <input type="checkbox"/> To facilitate assembly <input type="checkbox"/> Part standardization	<input type="checkbox"/> Vendor change <input type="checkbox"/> To improve reliability <input type="checkbox"/> Other	<input type="checkbox"/> To meet standards ()
Modification Schedule:	From first mass production.		

<G144 > (Model CM-P1)

OLD part number	NEW part number	Description	Q'ty	Int	Page	Index	Note
G1449606	G1459501	NCU	1→1	-	3	30	
G1449551	B2739541	Paper pick-up ass'y	1→1		5	17	
-	H9149557	Exit roller pole	0→1		6	50	

Change/Reason: The part number in the Parts Catalog was corrected.

2. FRAME ASSEMBLY



G144B03 VWRP

Model: Model CM-P1		Date: 13-Sep-06	No.: MG144005
Modified Article:		Prepared by: T. Shintani	
From: 1st Technical Support Sec. Service Support Dept.			
Reason for Modification:	<input checked="" type="checkbox"/> Parts catalog correction <input type="checkbox"/> To facilitate assembly <input type="checkbox"/> Part standardization	<input type="checkbox"/> Vendor change <input type="checkbox"/> To improve reliability <input type="checkbox"/> Other	<input type="checkbox"/> To meet standards ()
Modification Schedule:	From first mass production.		

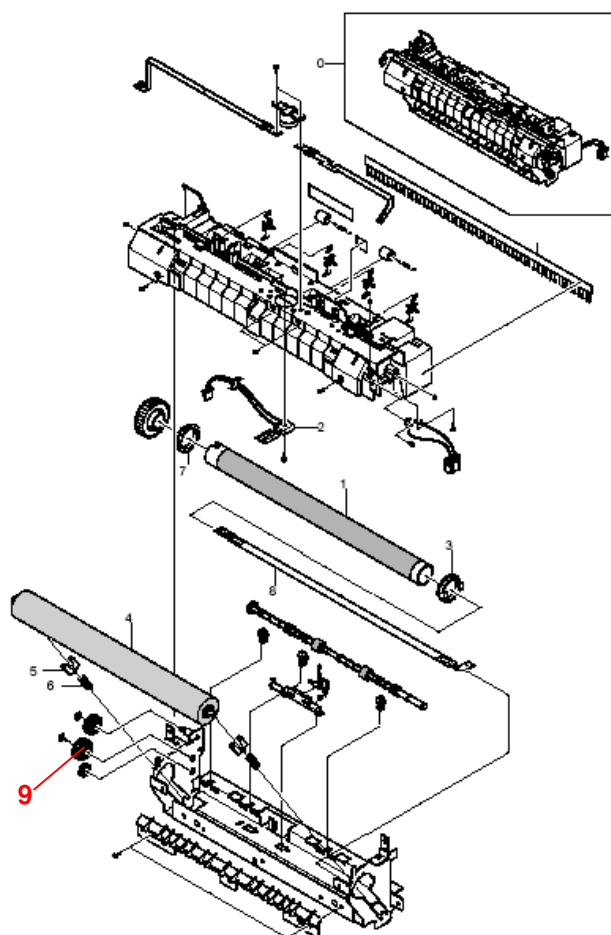
<G144 > (Model CM-P1)

NEW part number	Description	Q'ty	Int	Page	Index	Note
G1449609	Gear 25/15	0→1	-	4-10	9	

Change: These parts were added.

Reason: Requests from the field.

4. FUSING UNIT ASSEMBLY



G144905 WMP

Model: Model CM-P1		Date: 11-Oct-06	No.: MG144006
Modified Article: Parts catalog collection		Prepared by: T. Shintani	
From: 1st Technical Support Sec. Service Support Dept.			
Reason for Modification:	<input checked="" type="checkbox"/> Parts catalog correction <input type="checkbox"/> To facilitate assembly <input type="checkbox"/> Part standardization	<input type="checkbox"/> Vendor change <input type="checkbox"/> To improve reliability <input type="checkbox"/> Other	<input type="checkbox"/> To meet standards ()
Modification Schedule:	From first mass production.		

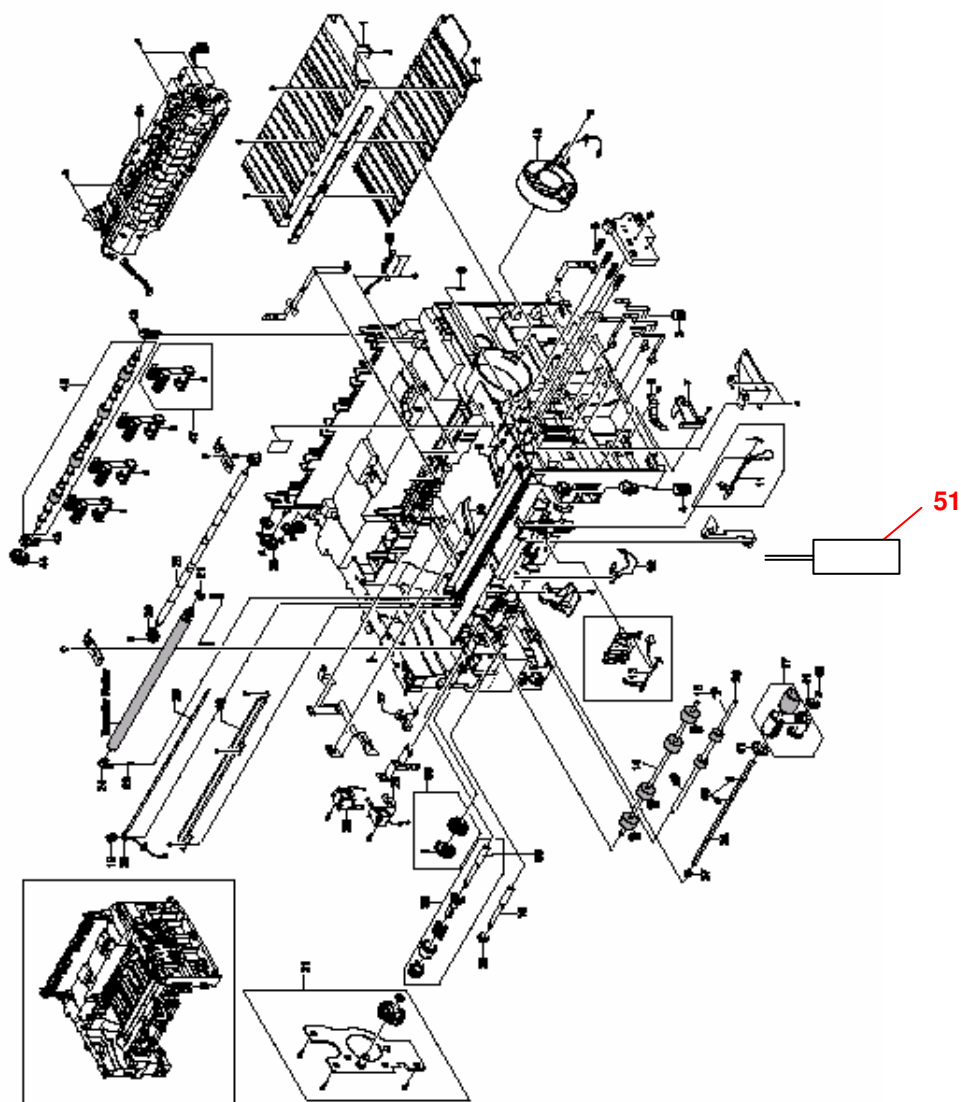
<G144 / G145> (Model CM-P1)

NEW part number	Description	Q'ty	Int	Page	Index	Note
G1447500	AIO SENSOR	0→1	-	2-6	51	

Change: This part was added.

Reason: Requests from the field.

2. FRAME ASSEMBLY



Model: Model CM-P1		Date: 21-Apr-08	No.: MG144007
Modified Article: Parts catalog collection		Prepared by: T. Shintani	
From: 1st Technical Support Sec. Service Support Dept.			
Reason for Modification:	<input checked="" type="checkbox"/> Parts catalog correction <input type="checkbox"/> To facilitate assembly <input type="checkbox"/> Part standardization	<input type="checkbox"/> Vendor change <input type="checkbox"/> To improve reliability <input type="checkbox"/> Other	<input type="checkbox"/> To meet standards ()
Modification Schedule:	From first mass production.		

<G144 / G145> (Model CM-P1)

OLD Part Number	NEW Part Number	DESCRIPTION	Q'TY	PAGE	INDEX
G1449664	G9601084	EXTENSION - BYPASS	1	3	15
G1449667	G9601083	DOCUMENT FEEDER	1	3	18
G1449668	G9601196	GEAR - DOCUMENT	1	3	19
G1449670	G9601082	TRAY LINE - BYPASS	1	3	21
G1449671	G9601195	SPRING - KNOB	1	3	22
G1449687	G9601062	TRANSFER GUIDE UP	1	5	1
G1449690	G9601155	MEC. TERMINAL	1	5	5
G1449691	G9601143	PLATE GUIDE RIGHT	1	5	8
G1449692	G9601079	SPRING - GUIDE	1	5	9
G1449693	G9601142	PLATE GUIDE LEFT	1	5	10
G1449696	G9601107	FEED ROLLER	1	5	14
G1449697	G9601133	BUSHING - FEED	1	5	15
G1449699	G9601129	EARTH - TRANSFER	1	5	18
G1449700	G9601069	HOLDER - QUENCHIN	1	5	19
G1449701	G9601055	SPRING - TRANSFER	1	5	22
G1449702	G9601060	BUSHING - TRANSFER	1	5	24
G1449703	G9601058	BUSHING - IDLE	1	5	26
G1449704	G9601099	CAM - PICKUP	1	5	27
G1449705	G9601032	SOL ENOID - PICK UP	1	5	28
G1449710	G9601140	IDLE - PICKUP	1	5	41
G1449711	G9601066	BEARING - EXIT	1	5	43
G1449712	G9601097	GEAR - EXIT ROLLER	1	5	44
G1449713	G9601174	RACK - EXIT ROLLER	1	5	47
G1449715	G9601026	COOLING FAN	1	5	49
G1449717	G9601033	SOL ENOID - MP ASS'Y	1	7	1
G1449718	G9601059	BUSHING - MP ASS'Y	1	7	2
G1449719	G9601070	STOPPER PICK - UP	1	5	40
G1449720	G9601072	FRICTION PAD HOLDER	1	7	6
G1449721	G9601101	IDEAL GEAR MA ASS'Y	1	5	36
G1449724	G9601153	FRICTION PAD	1	7	11
G1449740	G9601177	FRICTION PAD ASS'Y	1	13	3
G1449741	G9601078	SPRING - FRICTION	1	13	4
G1449744	G9601067	RUBBER FOOT BACK	1	5	3
G1449748	G9601311	FEED SHAFT	1	5	33
G1449749	G9601102	SHAFT PICK-UP ROLLER	1	5	38
G1449750	G9601141	CASSETTE COCKER	1	5	6

Change/Reason: Parts standardization with Model CM-C2.

Model: Model CM-P1		Date: 8-May-08	No.: MG144008
Modified Article: Parts catalog correction		Prepared by: T. Shintani	
From: 1st Technical Support Sec. Service Support Dept.			
Reason for Modification:	<input checked="" type="checkbox"/> Parts catalog correction <input type="checkbox"/> To facilitate assembly <input type="checkbox"/> Part standardization	<input type="checkbox"/> Vendor change <input type="checkbox"/> To improve reliability <input type="checkbox"/> Other	<input type="checkbox"/> To meet standards ()
Modification Schedule:	From first mass production.		

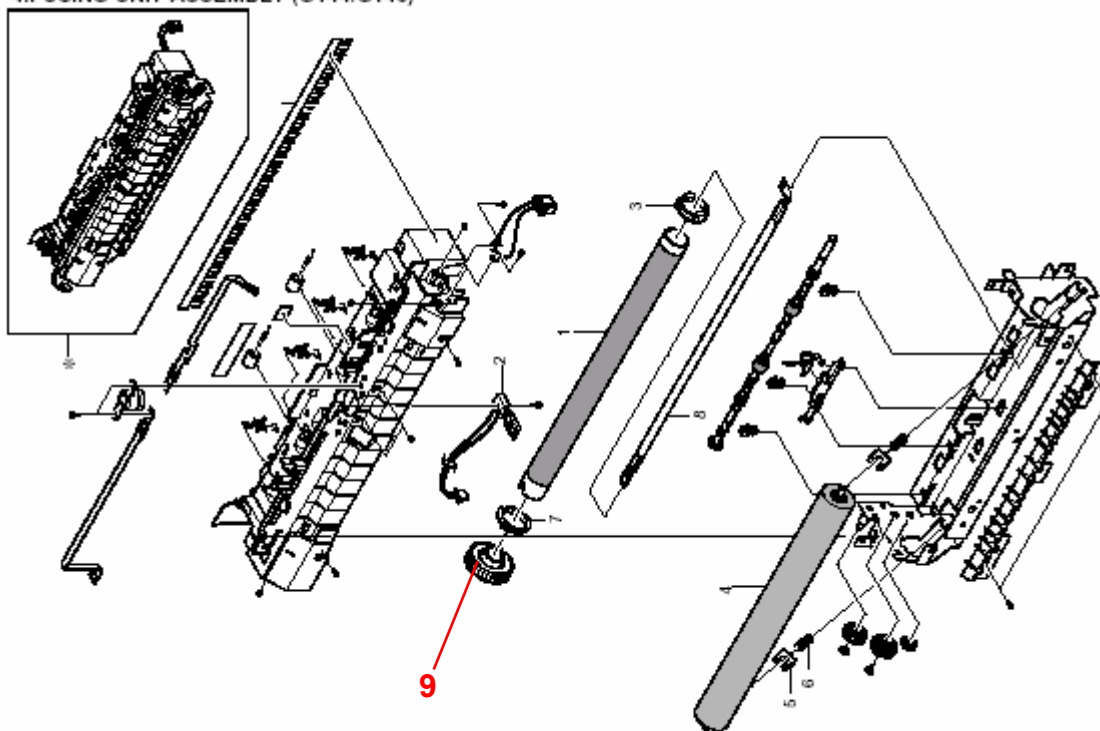
<G144 / G145> (Model CM-P1)

NEW part number	Description	Q'ty	Int	Page	Index	Note
B2739581	GEAR - FUSER	0→1	-	9	9	

Change: This part was added.

Reason: Requests from the field.

4.FUSING UNIT ASSEMBLY (G144/G145)



Model: Model CM-P1		Date: 5-Jun-08	No.: MG144009
Modified Article: Parts catalog correction		Prepared by: T. Shintani	
From: 1st Technical Support Sec. Service Support Dept.			
Reason for Modification:	<input checked="" type="checkbox"/> Parts catalog correction <input type="checkbox"/> To facilitate assembly <input type="checkbox"/> Part standardization	<input type="checkbox"/> Vendor change <input type="checkbox"/> To improve reliability <input type="checkbox"/> Other	<input type="checkbox"/> To meet standards ()
Modification Schedule:	From first mass production.		

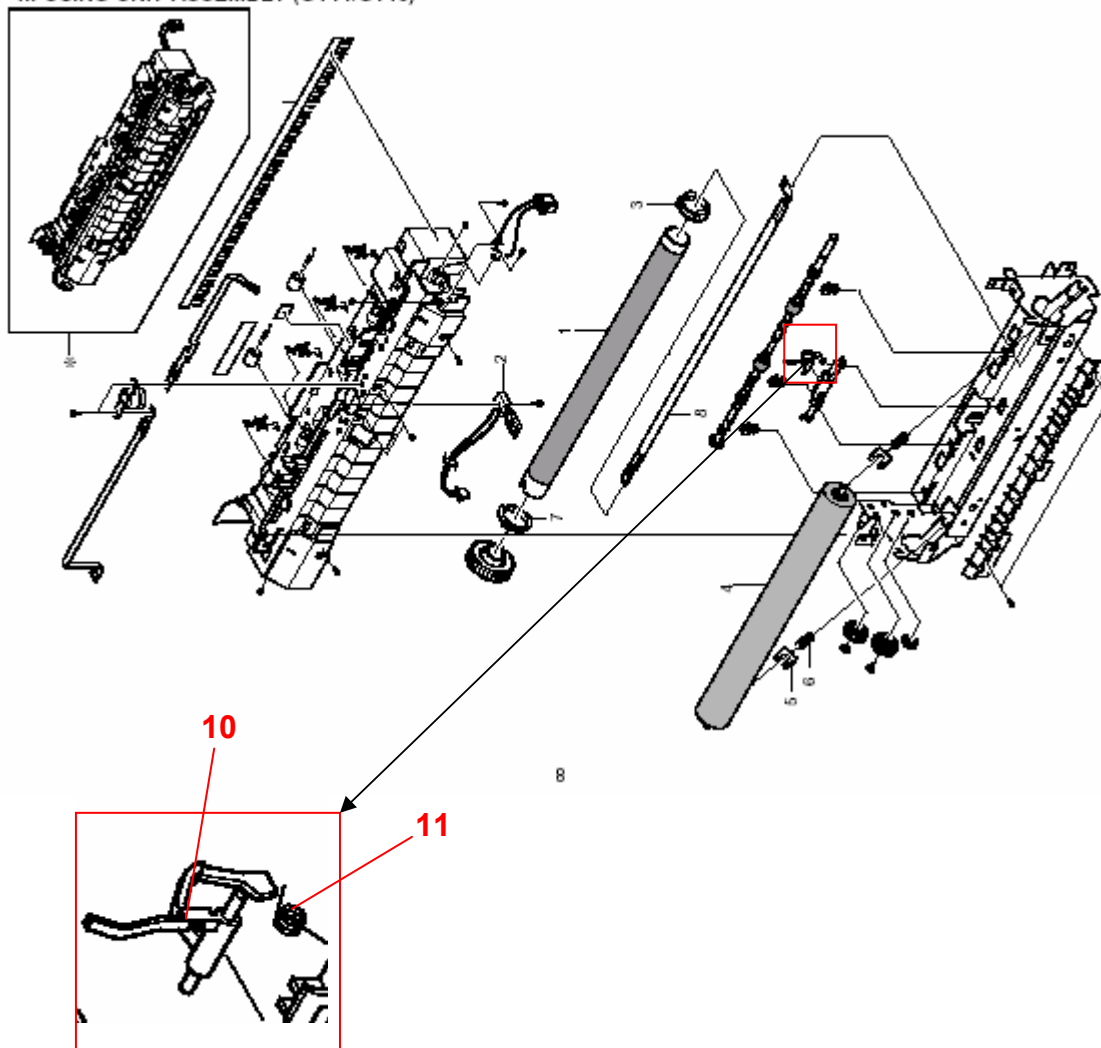
<G144 / G145> (Model CM-P1)

NEW part number	Description	Q'ty	Int	Page	Index	Note
B2739804	Actuator - Fusing	0→1	-	10	10	-
B1739694	SPRING-TS	0→1	-	10	11	-

Change: These parts were added.

Reason: Requests from the field.

4.FUSING UNIT ASSEMBLY (G144/G145)





Part Change Information List

Date: April 30, 2009

Model	Code	PCIL Number	PCIL Correction	Old part number	New part number	Description	Old Q'ty	New Q'ty	Int	3DPC	Page	Index	Set	Set Int	RTB	Note	Ref Number
Model CM-P1	G144	200904		G1449587	B2739724	HEAT ROLLER	1	1	O/O		9	1					V0804694
Model CM-P1	G145	200904		G1449587	B2739724	HEAT ROLLER	1	1	O/O		9	1					V0804694



Part Change Information List

Date: May 31, 2010

Model	Code	PCIL Nr.	PCIL Correction	Old part number	New part number	Description	Old Q'ty	New Q'ty	Int	3DPC	Page	Index	Set	Set Int	RTB	Note	Ref. Nr.	ECN Nr.
CM-P1	G144	201005		G9601079	G1861203	SPRING - GUIDE:JC6170932A	1	1	O/O		5	9					V1001047	
CM-P1	G145	201005		G9601079	G1861203	SPRING - GUIDE:JC6170932A	1	1	O/O		5	9					V1001047	



Part Change Information List

Date: Jul 30, 2010

Model	Code	PCIL Nr.	PCIL Correction	Old part number	New part number	Description	Old Q'ty	New Q'ty	Int	3DPC	Page	Index	Set	Set Int	RTB	Note	Ref. Nr.	ECN Nr.
CM-P1	G144	201007		G1449691	G9601143	PLATE GUIDE RIGHT	1	1	O/O		13	23			Y		V0700939	
CM-P1	G144	201007		G1449693	G9601142	PLATE GUIDE LEFT	1	1	O/O		13	24			Y		V0700939	





Part Change Information List

Date: June 30, 2011

Model	Code	PCIL Nr.	PCIL Correction	Old part number	New part number	Description	Old Q'ty	New Q'ty	Int	3DPC	Page	Index	Set	Set Int	RTB	Note	Ref. Nr.	ECN Nr.
CM-P1	G144	201106		H9149724	G9601137	End Fence (RoHs)	1	1	O/O		13	2					V0700910	



Part Change Information List

Date: July 2, 2015

Model	Code	PCIL Number	PCIL Correction	Old part number	New part number	Description	Old Q' ty	New Q' ty	Int	3DPC	Page	Index	Set	Set Int	RTB	Note	Ref Number	ECN Number
CM-P1	G144	201506		H9149719	G9601127	LEFT SIDE FENCE:JC7000300F	1	1	O/O	N	13	9					V0700910	
CM-P1	G145	201506		H9149719	G9601127	LEFT SIDE FENCE:JC7000300F	1	1	O/O	N	13	9					V0700910	
CM-P1	G144	201506		H9149720	G9601128	RIGHT SIDE FENCE:JC7000301F	1	1	O/O	N	13	10					V0700910	
CM-P1	G145	201506		H9149720	G9601128	RIGHT SIDE FENCE:JC7000301F	1	1	O/O	N	13	10					V0700910	