

Model: Model K- P3		Date: 2-Oct-03	No.: MG091001
Modified Article: Parts catalog correction		Prepared by: T.Shintani	
From: 1st Technical Support Sec. Service Support Dept.			
Reason for Modification:	<input checked="" type="checkbox"/> Parts catalog correction <input type="checkbox"/> To facilitate assembly <input type="checkbox"/> Part standardization	<input type="checkbox"/> Vendor change <input type="checkbox"/> To improve reliability <input type="checkbox"/> Other	<input type="checkbox"/> To meet standards ()
Modification Schedule:	From first mass production.		

Please note the following changes.

Old Part Number	New Part Number	Description	Q'ty	Int	Page	Index	Note
G0918617	G0918625	Operating Instructions – AP600N	1→1	- / -	37	9	1
G0881940B	G0881930F	Operation Panel NA Ass'y	1→1	- / -	3	10	2
G0884643	G0524644	Upper Fusing Entrance guide (EU)	1→1	- / -	15	22	3
G0563270	G0763270	Manual Feed Table : Ass'y	1→1	- / -	3	18	4
G0563271		Bypass Front Cover –RIC Europe/Asia	1→0	- / -	3	19	4
	G0523272	Bypass Front Cover	0→1	- / -	3	19	4

Notes:

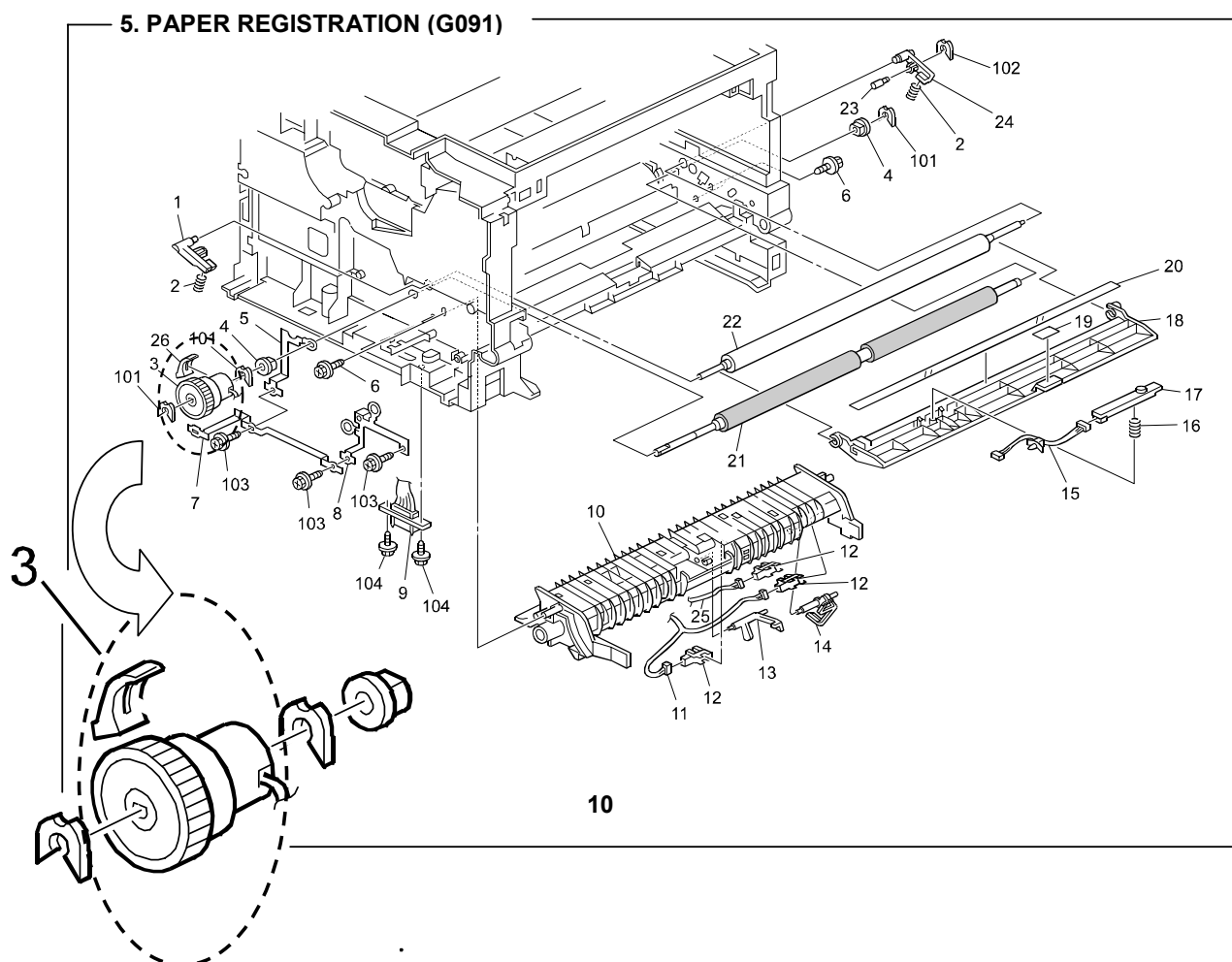
1. The O/I have been standardized with those for the General model (G091-11/G091-17).
2. The operation panel assembly for the EU model has been standardized with the assembly for the NA model (display changed from symbols to English).
3. (P/N misprint).
4. The bypass front cover has been standardized to the cover for the NA model ("Aficio" logo deleted).

Model: Model K- P3		Date: 17-Nov-03	No.: MG091002
Modified Article: Parts catalog correction		Prepared by: T. Shintani	
From: 1st Technical Support Sec. Service Support Dept.			
Reason for Modification:	<input checked="" type="checkbox"/> Parts catalog correction <input type="checkbox"/> To facilitate assembly <input type="checkbox"/> Part standardization	<input type="checkbox"/> Vendor change <input type="checkbox"/> To improve reliability <input type="checkbox"/> Other	<input type="checkbox"/> To meet standards ()
Modification Schedule:	From first mass production.		

Please apply the following P/N corrections to your Parts Catalogs.

Incorrect Part Number	Correct Part Number	Description	Q'ty	Int	Page	Index	Note
AX200208		Magnetic Clutch – Z45	1→0	- / -	11	3	*
G0763321		Clutch Sleeve Cover	1→0	- / -	11	26	*
	► G0763205	Magnetic Clutch : Registration : Ass'y	0→1	- / -	11	3	*
11050292		Wire Saddle	1→0	- / -	23	110	
	► 08025276	Tapping Screw With Washer – M3×6	0→1	- / -	23	106	

Note: The illustration for the magnetic clutch assembly has been corrected as follows:



Model: Model K- P3		Date: 26-Apr-04	No.: MG091003
Modified Article: Engine Board		Prepared by: A. Ishiyama	
From: 1st Technical Support Sec. Service Support Dept.			
Reason for Modification:	<input type="checkbox"/> Parts catalog correction <input type="checkbox"/> To facilitate assembly <input type="checkbox"/> Part standardization	<input type="checkbox"/> Vendor change <input type="checkbox"/> To improve reliability <input checked="" type="checkbox"/> Other	<input type="checkbox"/> To meet standards ()
Modification Schedule:	From first mass production.		

Two new engine boards have been registered in place of the one G0885123 board (service parts correction).

Incorrect Part Number	Correct Part Number	Description	Q'ty	Int	Page	Index	Note
G0885123		PCB EGB EXP ASS'Y	1→0		25	15	1
	G0885121F	PCB EGB ASS'Y - NA	0→1	X/O	25	15	2
	G0885122F	PCB EGB ASS'Y - EU	0→1	X/O	25	15	2

Important Notes:

1. Old boards are still usable:

If the old G0885123 engine board has been ordered (in stock) or is installed on a machine in the field, please modify the board at the next service visit.
See RTB RG091003 for the specific procedure and other details.

2. Usage with each model:

Part No.	G091				
	11	17	22	27	69
G0885121	√	√			
G0885122			√	√	√

Model: Model K- P3		Date: 18-Aug-04	No.: MG091004
Modified Article: Controller Board		Prepared by: A. Ishiyama	
From: 1st Technical Support Sec. Service Support Dept.			
Reason for Modification:	<input type="checkbox"/> Parts catalog correction <input type="checkbox"/> To facilitate assembly <input type="checkbox"/> Part standardization	<input type="checkbox"/> Vendor change <input checked="" type="checkbox"/> To improve reliability <input type="checkbox"/> Other	<input type="checkbox"/> To meet standards ()
Modification Schedule:	From July '04 production		

This change was made to stabilize the initialization of ASIC at the time power is turned on or reset:

- Resistor R524 (P/# 16504103) has been removed. A jumper wire was added to make a short circuit.

Old Part Number	New Part Number	Description	Q'ty	Int	Page	Index	Note
G0915701	G0915702	PCB Main EXP NIC	1→1	X/O	25	7	
16504103		Resistor – 10KΩ ± 5% 1/10W	53→52	-	31	179	

Model: Model K- P3		Date: 20-Jan-05	No.: MG091005
Modified Article: Stay – Paper Feed		Prepared by: A. Ishiyama	
From: 1st Technical Support Sec. Service Support Dept.			
Reason for Modification:	<input type="checkbox"/> Parts catalog correction <input type="checkbox"/> To facilitate assembly <input checked="" type="checkbox"/> Part standardization	<input type="checkbox"/> Vendor change <input type="checkbox"/> To improve reliability <input type="checkbox"/> Other	<input type="checkbox"/> To meet standards ()
Modification Schedule:	From January '05 production		

Old Part Number	New Part Number	Description	Q'ty	Int	Page	Index	Note
G0523100	G1112571	Stay – Paper Feed	1→1	X/O	11	10	

Change/Reason: Parts standardization with the next model (Model K-P4).

Model: Model K- P3		Date: 20-Jan-05	No.: MG091006
Modified Article: Power Cord – 230V		Prepared by: A. Ishiyama	
From: 1st Technical Support Sec. Service Support Dept.			
Reason for Modification:	<input type="checkbox"/> Parts catalog correction <input type="checkbox"/> To facilitate assembly <input checked="" type="checkbox"/> Part standardization	<input type="checkbox"/> Vendor change <input type="checkbox"/> To improve reliability <input type="checkbox"/> Other	<input type="checkbox"/> To meet standards ()
Modification Schedule:	From January '05 production		

Old Part Number	New Part Number	Description	Q'ty	Int	Page	Index	Note
GZ000003	G1025502	Power Cord – 230V	1→1	O/O	23	10	

Change/Reason: Parts standardization with the next model (Model K-P4).

Note: This applies only to the EU models (230V).

Reissued: 12-May-05

Model: Model K- P3	Date: 24-Feb-05	No.: MG091007a
--------------------	-----------------	----------------

MB Correction

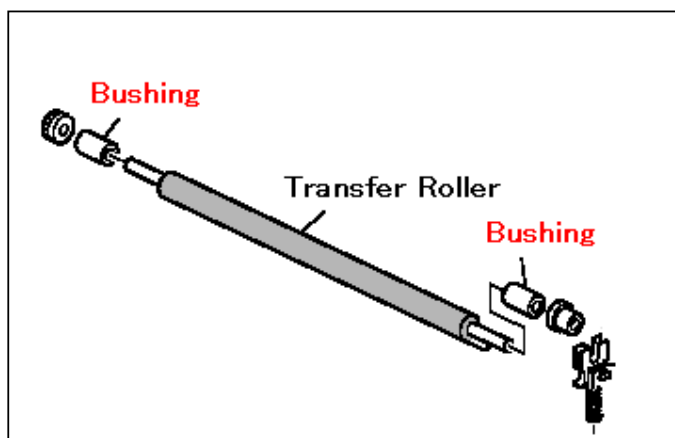
The items in bold italics have been corrected or added.

Modified Article: Transfer Roller		Prepared by: A. Ishiyama	
From: 1st Technical Support Sec. Service Support Dept.			
Reason for Modification:	<input type="checkbox"/> Parts catalog correction <input type="checkbox"/> To facilitate assembly <input checked="" type="checkbox"/> Part standardization	<input type="checkbox"/> Vendor change <input type="checkbox"/> To improve reliability <input type="checkbox"/> Other	<input type="checkbox"/> To meet standards ()
Modification Schedule:	From January '05 production		

Old Part Number	New Part Number	Description	Q'ty	Int	Page	Index	Note
G0523616	G1116256	Transfer Roller	1→1	See Note	13	5	
G0523618	G1296251	Positioning Roller - Transfer	1→1		13	6	
G0763619	G1296252	Gear – Transfer Roller	1→1		13	4	
	G1296255	Bushing	0→2		13	28	

Change/Reason: Parts standardization with the next model (Model K-P4).

Important: *All of the new parts in the table must be installed together as a set. You cannot install the new parts individually.*



Model: Model K-P3		Date: 27-Jul-06	No.: MG091008
Modified Article: Environmental Correspondence: Choke Coil		Prepared by: Y. Murata	
From: 1st Technical Support Sec. Service Support Dept.			
Reason for Modification:	<input type="checkbox"/> Parts catalog correction <input type="checkbox"/> To facilitate assembly <input checked="" type="checkbox"/> Part standardization	<input type="checkbox"/> Vendor change <input type="checkbox"/> To improve reliability <input type="checkbox"/> Other	<input type="checkbox"/> To meet standards ()
Modification Schedule:	From January '06 production.		

Old Number	New Number	Description	Q'ty	Int	Page	Index	Note
G0523522	G1113522	Discharge Lamp:P3	1	O/O	19	21	
G0525404	G1115404	Harness-Tonner End Sesor	1	O/O	11	15	
G0885400	G1115600	Harness:FST:Conn ecting	1	O/O	11	11	
G0885424	G1165424	Harness:Fusing:EU	1	O/O	19	17	
G0885403	G0915403	Harness:Polygon Mirror Motor:Sync	1	O/O	5	8	
G0525413	G0915413	Harness:Exit:Option	1	O/O	25	9	
G0883539	G1113539	Internal Thermistor	1	O/O	3	6	

Reason:

1. Change of the materials used in the part in accordance with environmental restrictions.

Model: K-P3		Date: 7-Aug-06	No.: MG091009
Modified Article: Manual Feed Table:Ass'y		Prepared by: Y.Murata	
From: 1st Tech. Support Sec. Service Support Dept.			
Reason for Modification:	<input type="checkbox"/> Parts catalog correction <input type="checkbox"/> Vendor change <input type="checkbox"/> Other <input type="checkbox"/> To facilitate assembly <input type="checkbox"/> To improve reliability <input checked="" type="checkbox"/> To meet standards (RoHS compliant) <input type="checkbox"/> Part standardization <input type="checkbox"/> Product Safety		

Old part number	New part number	Description	Q'ty	Int	Page	Index	Note
G0763273	G0763274	Base:Manual Feed:Adhesion	1	O/O	3	24	

Change: The materials for these parts were changed.

Reason: To comply with the RoHS Directive.

Model: K-P3		Date: 7-Aug-06	No.: MG091010
Modified Article: Power Supply Unit 124W EU		Prepared by: Y.Murata	
From: 1st Tech. Support Sec. Service Support Dept.			
Reason for Modification:	<input type="checkbox"/> Parts catalog correction <input type="checkbox"/> Vendor change <input type="checkbox"/> Other <input type="checkbox"/> To facilitate assembly <input type="checkbox"/> To improve reliability <input checked="" type="checkbox"/> To meet standards (RoHS compliant) <input type="checkbox"/> Part standardization <input type="checkbox"/> Product Safety		

Old part number	New part number	Description	Q'ty	Int	Page	Index	Note
G0885211	G1115211	Power Supply Unit 124W EU	1	O/O	23	12	

Change: The materials for these parts were changed.

Reason: To comply with the RoHS Directive.

Reissued:21-Aug-06

Model: Model K-P3	Date: 7-Aug-06	No.: MG091011a
-------------------	----------------	----------------

MB Reissue

The items in bold italics have been corrected or added.

Modified Article: POWER PACK BCT		Prepared by: Y. Murata	
From: 1st Tech. Support Sec. Service Support Dept.			
Reason for	<input type="checkbox"/> Parts catalog correction	<input type="checkbox"/> Vendor change	<input type="checkbox"/> Other
Modification:	<input type="checkbox"/> To facilitate assembly	<input type="checkbox"/> To improve reliability	<input checked="" type="checkbox"/> To meet standards (RoHS compliant)
	<input type="checkbox"/> Part standardization	<input type="checkbox"/> Product Safety	

Old parts number	New parts number	Description	Q'ty	Int	Page	Index	Note
<i>G0885300</i>	G1295300	Power Pack BCT	1	O/O	23	9	

Change: The materials for these parts were changed.

Reason: To comply with the RoHS Directive.

Model: Model K-P3		Date: 14-Sep-07	No.: MG091012
Modified Article: Friction Pad		Prepared by: Y.Yoshida	
From: 1st Technical Support Sec. Service Support Dept.			
Reason for Modification:	<input type="checkbox"/> Parts catalog correction <input type="checkbox"/> To facilitate assembly <input type="checkbox"/> Part standardization	<input type="checkbox"/> Vendor change <input type="checkbox"/> To improve reliability <input type="checkbox"/> Other	<input checked="" type="checkbox"/> To meet standards ()
Modification Schedule:			

Old Part Number	New Part Number	Description	Q'ty	Int	Page	Index	Note
G0883135	G1112588	Friction Pad	1→1	X/O	7	6	

Change: The material of this part was changed.

Reason: To conform to the RoHS Directive.

Model: Model K-P3		Date: 11-Jan-08	No.: MG091013
Modified Article: Paper Tray EU Ass'y		Prepared by: Y.Yoshida	
From: 1st Technical Support Sec. Service Support Dept.			
Reason for Modification:	<input type="checkbox"/> Parts catalog correction <input type="checkbox"/> To facilitate assembly <input type="checkbox"/> Part standardization	<input type="checkbox"/> Vendor change <input type="checkbox"/> To improve reliability <input type="checkbox"/> Other	<input checked="" type="checkbox"/> To meet standards ()
Modification Schedule:			

Old Part Number	New Part Number	Description	Q'ty	Int	Page	Index	Note
G0883046	G0883047	Paper Tray EU Ass'y (G091)	1→1	X/O	7	1	

Change: The material of this part was changed.

Reason: To conform to the RoHS Directive.

Model: Model K-P3		Date: 4-Feb-08	No.: MG091014
Modified Article: Parts number change-Clutch		Prepared by: Y.Yoshida	
From: 1st Technical Support Sec. Service Support Dept.			
Reason for Modification:	<input checked="" type="checkbox"/> Parts catalog correction <input type="checkbox"/> To facilitate assembly <input type="checkbox"/> Part standardization	<input type="checkbox"/> Vendor change <input checked="" type="checkbox"/> To improve reliability <input type="checkbox"/> Other	<input type="checkbox"/> To meet standards ()
Modification Schedule:			

Old Part Number	New Part Number	Description	Q'ty	Int	Page	Index	Note
G0763205	G1292585	Magnetic Clutch Ass'y – Regist (G091 G116)	1→1		11	3	
AX200209		Magnetic Clutch-Z25(G091)	1→0		21	2	
G1202582	GX200026	Magnetic clutch registration :0.35N·M:Z45 (G091 G116)	1→1		21	2	
G1112590	GX200027	Magnetic clutch – internal :0.25N·M:Z25 (G091 G116)	1→1		21	2	

Change:

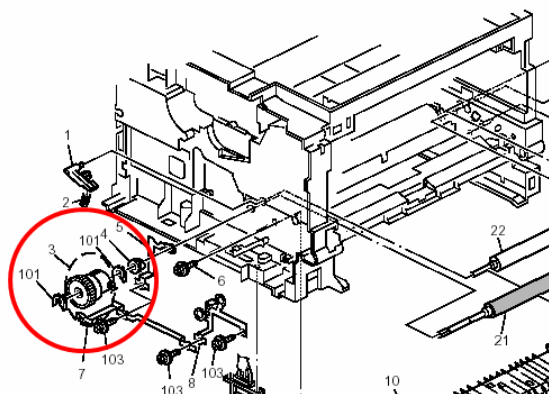
- 1) P/N AX200209 was deleted from the Parts Catalog
- 2) The type of grease applied to the clutches on the production line was changed.

Reason:

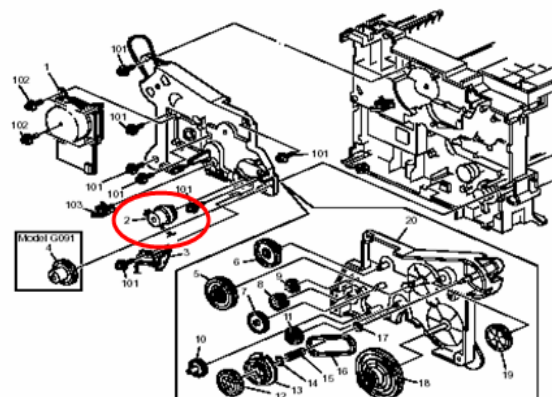
- 1) P/N AX200209 and its description were incorrect.
- 2) To improve the reliability of these clutches.

Note: P/N G1292585 (pg. 11, index #3) includes P/N GX200026.

5.PAPER REGISTRATION (G091/G116)



10.DRIVE SECTION (G091/G116)



Model: Model K- P3		Date: 13-Feb-08	No.: MG091015
Modified Article: Controller Board		Prepared by: Y. Yoshida	
From: 1st Technical Support Sec. Service Support Dept.			
Reason for Modification:	<input checked="" type="checkbox"/> Parts catalog correction <input type="checkbox"/> To facilitate assembly <input type="checkbox"/> Part standardization	<input type="checkbox"/> Vendor change <input type="checkbox"/> To improve reliability <input type="checkbox"/> Other	<input checked="" type="checkbox"/> To meet standards ()
Modification Schedule:			

Old Part Number	New Part Number	Old Description	Description	Q'ty	Int	Page	Index	Note
G0915702	G0915703	PCB:TYPE-K3: EXP:NIC	PCB:TYPE-K3: EXP:NIC	1→1	O/O	25	7	MB4
G0915702	G1165317	PCB:TYPE-K3: EXP:NIC	PCB:KIR-P4D:PROGRAM: EXP:NIC	1→1	O/O	25	7	

Change:

- 1) The material for the G0915702 PCB was changed. (Kir-P3)
- 2) P/N G1165317 was added to the Parts Catalog. (Kir-P4)

Reason:

- 1) RoHS compliance
- 2) The P/N was missing from the catalog. (Kir-P4)

Model: Kir-P3		Date: 2-Sep-08	No.: MG091016
Modified Article: EEPROM and DIP Switch (Engine Board)		Prepared by: Y.Gaman	
From: 1st Tech. Support Sec. Service Support Dept.			
Reason for Modification:	<input type="checkbox"/> Parts catalog correction <input type="checkbox"/> Vendor change <input type="checkbox"/> Other <input type="checkbox"/> To facilitate assembly <input type="checkbox"/> To improve reliability <input type="checkbox"/> To meet standards <input checked="" type="checkbox"/> Part standardization <input type="checkbox"/> Product Safety ()		

Old part number	New part number	Description	Q'ty	Int	Page	Index	Note
14075271	14076588	EEPROM - M24C02- WBN6P	1	O/O	63	131	
12042415	12042801	DIP SWITCH	1	O/O	63	120	

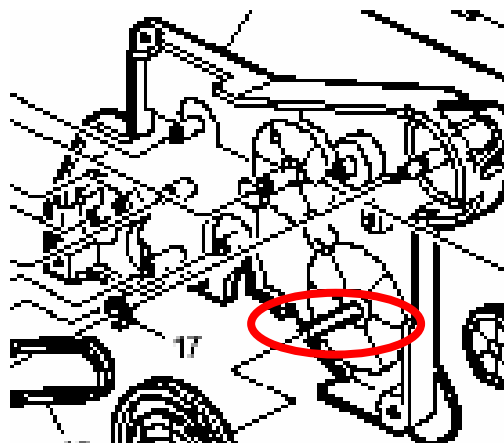
Change/Reason: Parts standardization.

Model: Model K-P3		Date: 24-Oct-08	No.: MG091017
Modified Article: Drive Unit Bracket		Prepared by: Y.Yoshida	
From: 1st Technical Support Sec. Service Support Dept.			
Reason for Modification:	<input type="checkbox"/> Parts catalog correction <input type="checkbox"/> To facilitate assembly <input type="checkbox"/> Part standardization	<input type="checkbox"/> Vendor change <input checked="" type="checkbox"/> To improve reliability <input type="checkbox"/> Other	<input type="checkbox"/> To meet standards ()
Modification Schedule:			

Old Part Number	New Part Number	Description	Q'ty	Int	Page	Index	Note
G0521102	M0011122	Drive Unit Bracket	1→1		21	20	

Change: The material of the shaft was changed.

Reason: To further improve the performance of the drum drive mechanism.





Part Change Information List

Date: May 30, 2009

Model	Code	PCIL Number	PCIL Correction	Old part number	New part number	Description	Old Q'ty	New Q'ty	Int	3DPC	Page	Index	Set	Set Int	RTB	Note	Ref Number
K-P3	G086	200905		G0524699	G0964692	FUSING RIGHT COVER	1	1	X/O		15	10					V0901196
K-P3	G088	200905		G0524699	G0964692	FUSING RIGHT COVER	1	1	X/O		15	10					V0901196
K-P3	G091	200905		G0524699	G0964692	FUSING RIGHT COVER	1	1	O/O		15	10					V0901196
K-P3	G141	200905		G0524699	G0964692	FUSING RIGHT COVER	1	1	X/O		15	10					V0901196



Part Change Information List

Date: August 31, 2011

Model	Code	PCIL Nr.	PCIL Correction	Old part number	New part number	Description	Old Qty	New Qty	Int	3DPC	Page	Index	Set	Set Int	RTB	Note	Ref. Nr.	ECN Nr.
K-P3	G091	201004			16051355	Capacitor - 680PF - ±10% - 50V	0	1			63	188			RG091010		V1000449	10021062



Part Change Information List

Date: November 30, 2010

Model	Code	PCIL Nr.	PCIL Correctio	Old part number	New part number	Description	Old Q'ty	New Q'ty	Int	3DPC	Page	Index	Set	Set Int	RTB	Note	Ref. Nr.	ECN Nr.
K-P3	G091	201011		G0521518	G0521525	Spring - Lock Lever	1	1	X/O		3	12					V1001674	10050174



Part Change Information List

Date: February 28, 2011

Model	Code	PCIL Nr.	PCIL Correction	Old part number	New part number	Description	Old Q'ty	New Q'ty	Int	3DPC	Page	Index	Set	Set Int	RTB	Note	Ref. Nr.	ECN Nr.
K-P3b	G056	201102		G0523140	G1292583	MAGNETIC CLUTCH ASS'Y - PAPER FEED	1	1	O/O		7	23					V1001681	



Part Change Information List

Date: June 30, 2011

Model	Code	PCIL Nr.	PCIL Correction	Old part number	New part number	Description	Old Q'ty	New Q'ty	Int	3DPC	Page	Index	Set	Set Int	RTB	Note	Ref. Nr.	ECN Nr.
K-P3	G091	201106		G0525422	G0885422	Harness - Main SW 230V (G091-22/27)	1	1	X/O		23	13					V1100448	11010159
K-P3	G056	201106		G0525422	G0885422	Harness - Main SW 230V	1	1	X/O		23	13					V1100448	11010159



Part Change Information List

Date: July 30, 2013

Model	Code	PCIL Number	PCIL Correction	Old part number	New part number	Description	Old Q'ty	New Q'ty	Int	3DPC	Page	Index	Set	Set Int	RTB	Note	Ref Number	ECN Number
K-P3	G091	201307		G0525060	M0015250	PCB:SYNC DETECTOR BOARD	1	1	O/O		5	15					V1301110	13021099



Part Change Information List

Date: May 30, 2014

Model	Code	PCIL Number	PCIL Correction	Old part number	New part number	Description	Old Q'ty	New Q'ty	Int	3DPC	Page	Index	Set	Set Int	RTB	Note	Ref Number	ECN Number
K-P3	G086	201405		G0525060	M0015250	PCB:SYNC DETECTOR BOARD	1	1	O/O		5	15					V1301122	
K-P3	G088	201405		G0525060	M0015250	PCB:SYNC DETECTOR BOARD	1	1	O/O		5	15					V1301122	
K-P3	G091	201405		G0525060	M0015250	PCB:SYNC DETECTOR BOARD	1	1	O/O		5	15					V1301122	
K-P3	G141	201405		G0525060	M0015250	PCB:SYNC DETECTOR BOARD	1	1	O/O		5	15					V1301122	
K-P3b	G056	201405		G0525060	M0015250	PCB:SYNC DETECTOR BOARD	1	1	O/O		5	24					V1301122	



Part Change Information List

Date: July 31, 2014

Model	Code	PCIL Number	PCIL Correction	Old part number	New part number	Description	Old Q'ty	New Q'ty	Int	3DPC	Page	Index	Set	Set Int	RTB	Note	Ref Number	ECN Number
K-P3	G091	201407		14010821	14022420	DIODE:1SS133	6	6	O/O		35	114					V1400918	14010765



Part Change Information List

Date: August 29, 2014

Model	Code	PCIL Number	PCIL Correction	Old part number	New part number	Description	Old Q'ty	New Q'ty	Int	3DPC	Page	Index	Set	Set Int	RTB	Note	Ref Number	ECN Number
K-P3	G091	201408		07200020E	M0471552	SHEET:POSITIONING CONTROL:COVER:FRONT	2	2	X/O		3	103					V1401111	14040566



Part Change Information List

Date: September 30, 2014

Model	Code	PCIL Number	PCIL Correction	Old part number	New part number	Description	Old Q'ty	New Q'ty	Int	3DPC	Page	Index	Set	Set Int	RTB	Note	Ref Number	ECN Number
K-P3	G091	201409		G0291982	G0291980	DECAL - LD	1	1	O/O		5	12					V1402526	14060659



Part Change Information List

Date: October 31, 2014

Model	Code	PCIL Number	PCIL Correction	Old part number	New part number	Description	Old Q'ty	New Q'ty	Int	3DPC	Page	Index	Set	Set Int	RTB	Note	Ref Number	ECN Number
K-P3	G086	201410		G0521274	M0791274	LEVER:MICRO SWITCH:REAR	1	1	X/O		11	1					V1402928	
K-P3	G088	201410		G0521274	M0791274	LEVER:MICRO SWITCH:REAR	1	1	X/O		11	1					V1402928	
K-P3	G141	201410		G0521274	M0791274	LEVER:MICRO SWITCH:REAR	1	1	X/O		11	1					V1402928	
K-P3b	G056	201410		G0521274	M0791274	LEVER:MICRO SWITCH:REAR	1	1	X/O		11	1					V1402928	
K-P3	G091	201410		G0521274	M0791274	LEVER:MICRO SWITCH:REAR	1	1	X/O		19	1					V1402889	14091093



Part Change Information List

Date: November 28, 2014

Model	Code	PCIL Number	PCIL Correction	Old part number	New part number	Description	Old Q'ty	New Q'ty	Int	3DPC	Page	Index	Set	Set Int	RTB	Note	Ref Number	ECN Number
K-P3	G091	201411		G0521274	M0791274	LEVER:MICRO SWITCH:REAR	1	1	X/O		19	1					V1402928	

Model	Code	PCIL Number	PCIL Correction	Old part number	New part number	Description	Old Q'ty	New Q'ty	Int	3DPC	Page	Index	Set	Set Int	RTB	Note	Ref Number	ECN Number
K-P3	G091	201501			G6905752	PCB:GWHDD:PBF:ASS'Y	0	1	O/O						RG091012		V1402934	



Part Change Information List

Date: April 1, 2015

Model	Code	PCIL Number	PCIL Correction	Old part number	New part number	Description	Old Q'ty	New Q'ty	Int	3DPC	Page	Index	Set	Set Int	RTB	Note	Ref Number	ECN Number
K-P3b	G056	201503		G0523294	G0883294	PAPER TRANSPORT GUIDE	1	1	X/O	N	13	10					V1403217	



Part Change Information List

Date: November 2, 2015

Model	Code	PCIL Number	PCIL Correction	Old part number	New part number	Description	Old Q'ty	New Q'ty	Int	3DPC	Page	Index	Set	Set Int	RTB	Note	Ref Number	ECN Number
K-P3	G091	201510		GZ000005	11500456	POWER SUPPLY CODE:250V:10A:CHN	1	1	O/O	N	23	10					V1502915	15100595



Part Change Information List

Date: December 2, 2015

Model	Code	PCIL Number	PCIL Correction	Old part number	New part number	Description	Old Q'ty	New Q'ty	Int	3DPC	Page	Index	Set	Set Int	RTB	Note	Ref Number	ECN Number
K-P3b	G056	201511		G0522701	G0522703	IMAGING UNIT:ASS'Y	1	1	O/O	N	5	*					V1501812	