

Model: Model C – P1		Date: 2-Oct-03	No.: MG094001
Modified Article: Rubber Foot		Prepared by: T. Shintani	
From: 1st Technical Support Sec. Service Support Dept.			
Reason for Modification:	<input type="checkbox"/> Parts catalog correction <input type="checkbox"/> To facilitate assembly <input type="checkbox"/> Part standardization	<input type="checkbox"/> Vendor change <input type="checkbox"/> To improve reliability <input checked="" type="checkbox"/> Other	<input type="checkbox"/> To meet standards (       )
Modification Schedule:	After the old parts have become out of stock.		

The material of the following has been changed to a different rubber to further increase its reliability.

Old part number	New part number	Description	Q'ty	Int	Page	Index	Note
GH010006		Foot Rubber FF – 006	2→2	X/O	21	19	
	→GH010007	Rubber Foot FF – 006 (P4070)N					

Reissued: 11-Dec-03

Model: Model C-P1	Date: 17-Nov-03	No.: MG094002a
-------------------	-----------------	----------------

## MB Correction

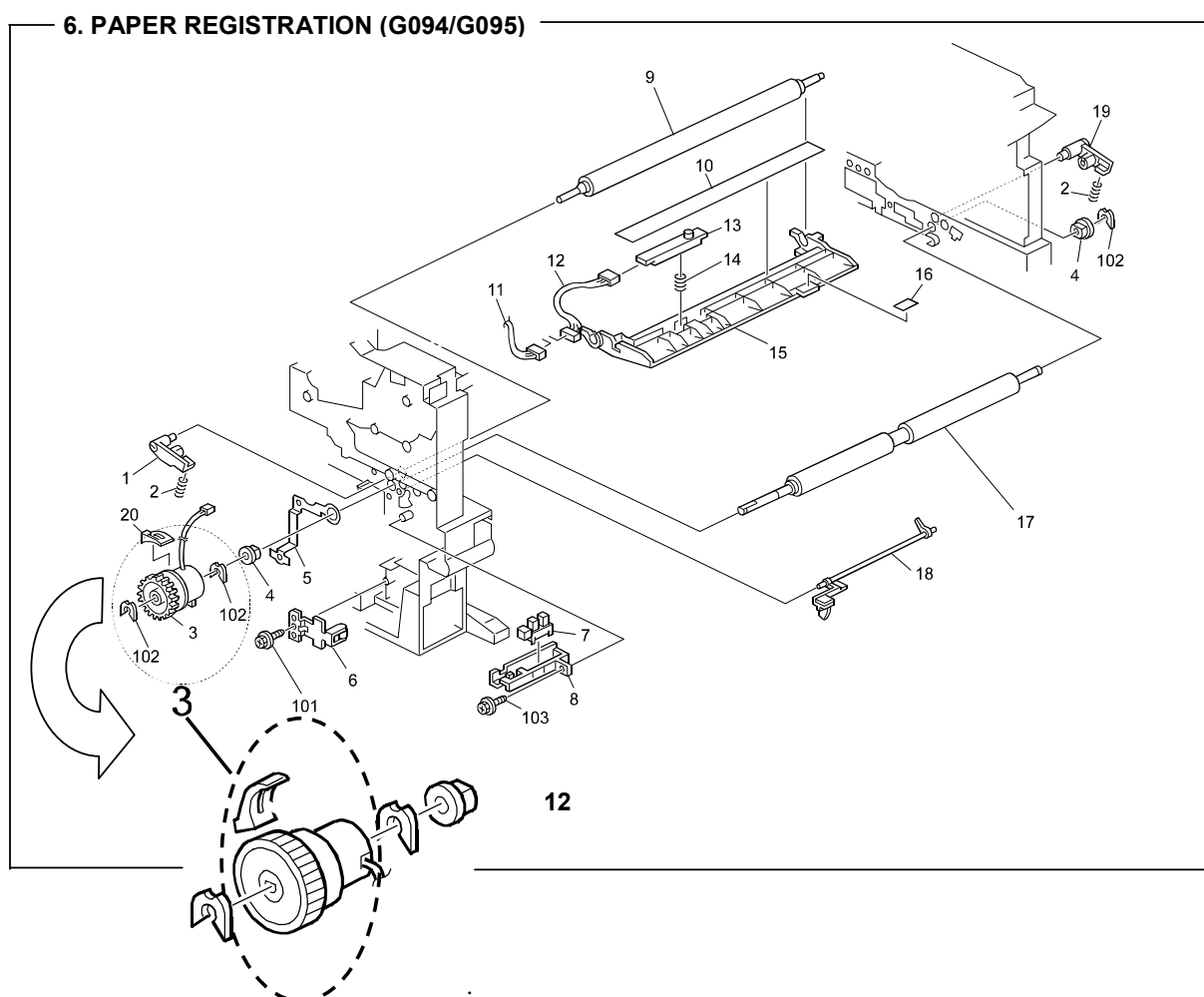
The items in bold italics have been corrected or added.

Modified Article: Parts catalog correction		Prepared by: T. Shintani	
From: 1st Technical Support Sec. Service Support Dept.			
Reason for Modification:	<input checked="" type="checkbox"/> Parts catalog correction <input type="checkbox"/> To facilitate assembly <input type="checkbox"/> Part standardization	<input type="checkbox"/> Vendor change <input type="checkbox"/> To improve reliability <input type="checkbox"/> Other	<input type="checkbox"/> To meet standards (      )
Modification Schedule:	From first mass production.		

Please apply the following P/N corrections to your Parts Catalogs.

Incorrect Part Number	Correct Part Number	Description	Q'ty	Int	Page	Index	Note
AX200208		Magnetic Clutch – Z45	1→0	- / -	<b>13</b>	3	*
G0763321		Clutch Sleeve Cover	1→0	- / -	<b>13</b>	20	*
	► G0763205	Magnetic Clutch : Registration : Ass'y	0→1	- / -	<b>13</b>	3	*

**Note:** The illustration for the magnetic clutch assembly has been corrected as follows:



Model: Model C- P1		Date: 26-Apr-04	No.: MG094003
Modified Article: Engine Board		Prepared by: A. Ishiyama	
From: 1st Technical Support Sec. Service Support Dept.			
Reason for Modification:	<input type="checkbox"/> Parts catalog correction <input type="checkbox"/> To facilitate assembly <input type="checkbox"/> Part standardization	<input type="checkbox"/> Vendor change <input type="checkbox"/> To improve reliability <input checked="" type="checkbox"/> Other	<input type="checkbox"/> To meet standards (       )
Modification Schedule:	From first mass production.		

Two new engine boards have been registered in place of the one G0965116 board (service parts correction).

Old Part Number	New Part Number	Description	Q'ty	Int	Page	Index	Note
G0965116		PCB EGB EXP ASS'Y	1→0		27	10	1
	G0985102F	PCB EGB ASS'Y - NA	0→1	X/O	27	10	2
	G0985104F	PCB EGB ASS'Y - EU	0→1	X/O	27	10	2

## Important Notes:

### 1. Old boards are still usable:

If the old G0965116 engine board has been ordered (in stock) or is installed on a machine in the field, please modify the board at the next service visit.  
See RTB RG094002 for the specific procedure and other details.

### 2. Usage with each model:

Part No.	G094/G095				
	11	17	22	24	27
G0985102	√	√			
G0985104			√	√	√

Reissued: 15-Sep-04

Model: Model C- P1	Date: 18-Aug-04	No.: MG094004a
--------------------	-----------------	----------------

## MB Correction

The items in bold italics have been corrected or added.

Modified Article: Controller Board		Prepared by: A. Ishiyama	
From: 1st Technical Support Sec. Service Support Dept.			
Reason for Modification:	<input type="checkbox"/> Parts catalog correction <input type="checkbox"/> To facilitate assembly <input type="checkbox"/> Part standardization	<input type="checkbox"/> Vendor change <input checked="" type="checkbox"/> To improve reliability <input type="checkbox"/> Other	<input type="checkbox"/> To meet standards (      )
Modification Schedule:	From July '04 production		

This change was made to stabilize the initialization of an ASIC at the time power is turned on or reset:

- Resistor R524 (P/# 16504103) has been removed. A jumper wire was added to make a short circuit.

Old Part Number	New Part Number	Description	Q'ty	Int	Page	Index	Note
G0945701	G0945702	Controller Board – G094 Model	1→1	X/O	27	6	
16504103		Resistor – 10KΩ ± 5% 1/10W	53→52	-	37	169	
G0955701	G0955702	Controller Board – G095 Model	1→1	X/O	27	6	
16504103		Resistor – 10KΩ ± 5% 1/10W	53→52	-	<b>47</b>	179	

Model: Model C- P1		Date: 18-Nov-04	No.: MG094005
Modified Article: Hot Roller		Prepared by: A. Ishiyama	
From: 1st Technical Support Sec. Service Support Dept.			
Reason for Modification:	<input type="checkbox"/> Parts catalog correction <input type="checkbox"/> To facilitate assembly <input checked="" type="checkbox"/> Part standardization	<input type="checkbox"/> Vendor change <input type="checkbox"/> To improve reliability <input type="checkbox"/> Other	<input type="checkbox"/> To meet standards (       )
Modification Schedule:	From September '04 production		

Old part number	New part number	Description	Q'ty	Int	Page	Index	Note
AE011076	G1294063	Hot Roller	1→1	O/O	17	7	

**Change/Reason:** Parts standardization with the C-P2.

**Note:** The new G1294063 hot roller is used on the C-P2 from the beginning of mass production.

Model: Model C-P1		Date: 12-Jan-05	No.: MG094006
Modified Article: Environmental Correspondence: Choke Coil		Prepared by: A. Ishiyama	
From: 1st Technical Support Sec. Service Support Dept.			
Reason for Modification:	<input type="checkbox"/> Parts catalog correction <input type="checkbox"/> To facilitate assembly <input checked="" type="checkbox"/> Part standardization	<input type="checkbox"/> Vendor change <input type="checkbox"/> To improve reliability <input type="checkbox"/> Other	<input type="checkbox"/> To meet standards (        )
Modification Schedule:	From January '05 production.		

Incorrect Part Number	Correct Part Number	Description	Q'ty	Int	Page	Index	Note
G0965205	G1295205	Choke Coil	1→1	O/O	25	17	

**Reason:**

1. Change of the materials used in the part in accordance with environmental restrictions.

Model: Model C- P1		Date: 20-Jan-05	No.: MG094007
Modified Article: Power Cord – 230V		Prepared by: A. Ishiyama	
From: 1st Technical Support Sec. Service Support Dept.			
Reason for Modification:	<input type="checkbox"/> Parts catalog correction <input type="checkbox"/> To facilitate assembly <input checked="" type="checkbox"/> Part standardization	<input type="checkbox"/> Vendor change <input type="checkbox"/> To improve reliability <input type="checkbox"/> Other	<input type="checkbox"/> To meet standards (      )
Modification Schedule:	From January '05 production		

Old Part Number	New Part Number	Description	Q'ty	Int	Page	Index	Note
GZ000003	G1025502	Power Cord – 230V	1→1	O/O	25	9	

**Change/Reason:** Parts standardization with the next model (Model C-P2).

**Note:** This applies only to the EU models (230V).

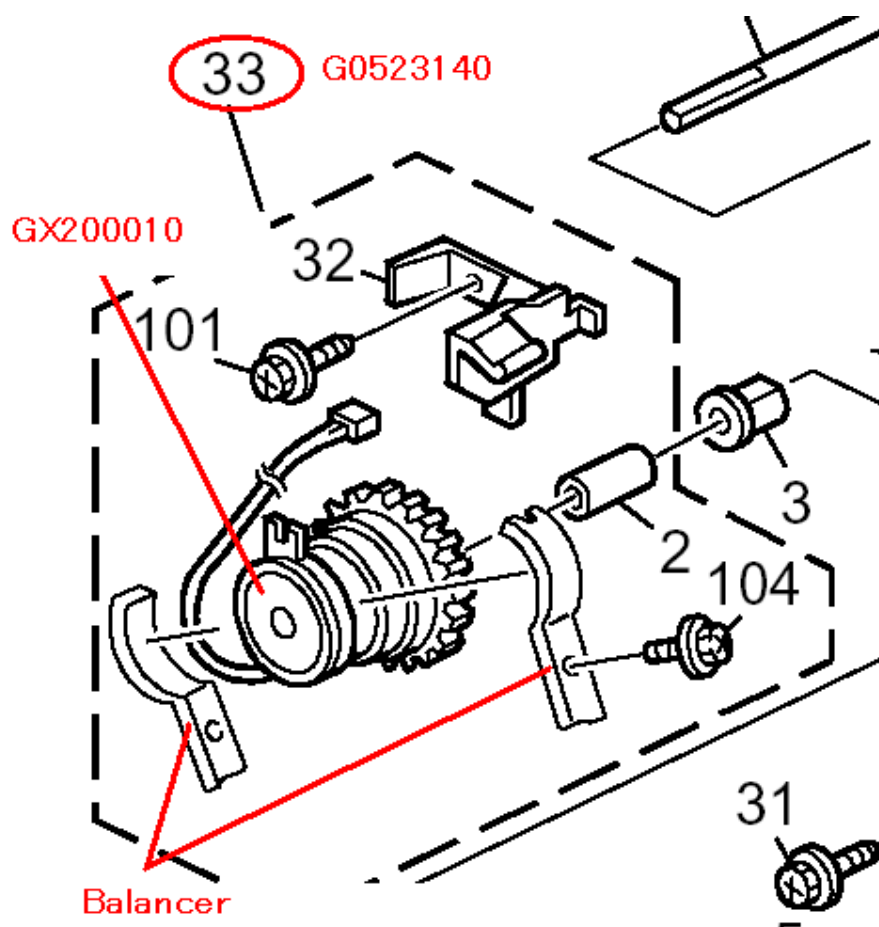
Model: Model C-P1		Date: 3-Feb-05	No.: MG094008
Modified Article: Parts catalog correction - Clutch		Prepared by: A. Ishiyama	
From: 1st Technical Support Sec. Service Support Dept.			
Reason for Modification:	<input checked="" type="checkbox"/> Parts catalog correction <input type="checkbox"/> To facilitate assembly <input type="checkbox"/> Part standardization	<input type="checkbox"/> Vendor change <input type="checkbox"/> To improve reliability <input type="checkbox"/> Other	<input type="checkbox"/> To meet standards (      )
Modification Schedule:	From first mass production.		

Incorrect Part Number	Correct Part Number	Description	Q'ty	Int	Page	Index	Note
GX200010		Magnetic Clutch	1→0	- / -	11	1	*

**Change:** The GX200010 magnetic clutch was deleted from service parts.

**Reason:** This part was registered as a service part by mistake.

**Note:** If you need to replace this magnetic clutch, order the Magnetic Clutch Assembly (G0523140, index #33).





Model: Model C- P1		Date: 25-Mar-05	No.: MG094009
Modified Article: Environmental Correspondances		Prepared by: A. Ishiyama	
From: 1st Technical Support Sec. Service Support Dept.			
Reason for Modification:	<input checked="" type="checkbox"/> Parts catalog correction <input type="checkbox"/> To facilitate assembly <input type="checkbox"/> Part standardization	<input type="checkbox"/> Vendor change <input type="checkbox"/> To improve reliability <input checked="" type="checkbox"/> Other	<input type="checkbox"/> To meet standards (        )
Modification Schedule:	From January '05 production		

Old part number	New part number	Description	Q'ty	Int	Page	Index	Note
G0963053	G1022818	Tray Bottom Plate Adhesion	1→1	X/O	9	14	
G0292608	52152713	Base Pad	1→1	X/O	9	15	

**Change/Reason:** The material used in these parts (lead) was changed to a non-toxic type.

Reissued: 12-May-05

Model: Model C- P1	Date: 12-Apr-05	No.: MG094010a
--------------------	-----------------	----------------

## MB Correction

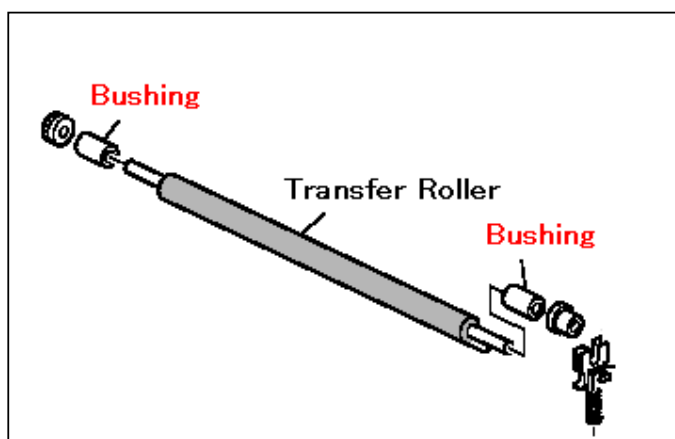
The items in bold italics have been corrected or added.

Modified Article: Transfer Roller		Prepared by: A. Ishiyama	
From: 1st Technical Support Sec. Service Support Dept.			
Reason for Modification:	<input type="checkbox"/> Parts catalog correction <input type="checkbox"/> To facilitate assembly <input checked="" type="checkbox"/> Part standardization	<input type="checkbox"/> Vendor change <input type="checkbox"/> To improve reliability <input type="checkbox"/> Other	<input type="checkbox"/> To meet standards (      )
Modification Schedule:	From January '05 production		

Old Part Number	New Part Number	Description	Q'ty	Int	Page	Index	Note
G0963610	G1296260	Transfer Roller Ass'y	1→1	X/O	15	12	
G0963616	G1296257	Transfer Roller	1→1	X/O	15	14	
G0523618	G1296251	Positioning Roller - Transfer	1→1	X/O	15	15	
G0763619	G1296252	Gear – Transfer Roller	1→1	X/O	15	13	
	G1296255	Bushing	0→2	-	15	25	

**Change/Reason:** Parts standardization with the next model (Model C-P2).

**Important:** *All of the new parts in the table must be installed together as a set. You cannot install the new parts individually.*



Model: C-P1		Date: 7-Aug-06	No.: MG094011
Modified Article: Power Pack BCT		Prepared by: Y.Murata	
From: 1st Tech. Support Sec. Service Support Dept.			
Reason for Modification:	<input type="checkbox"/> Parts catalog correction <input type="checkbox"/> Vendor change <input type="checkbox"/> Other <input type="checkbox"/> To facilitate assembly <input type="checkbox"/> To improve reliability <input checked="" type="checkbox"/> To meet standards (RoHs compliant) <input type="checkbox"/> Part standardization <input type="checkbox"/> Product Safety		

Old part number	New part number	Description	Q'ty	Int	Page	Index	Note
G00965300	G1295300	Power Pack BCT	1	O/O	25	5	

**Change:** The materials for these parts were changed.

**Reason:** To comply with the RoHS Directive.

Model: Cassis-P1		Date: 7-Aug-06	No.: MG094012
Modified Article: Power Supply Unit:124W:RoHs		Prepared by: Y.Murata	
From: 1st Tech. Support Sec. Service Support Dept.			
Reason for Modification:	<input type="checkbox"/> Parts catalog correction <input type="checkbox"/> Vendor change <input type="checkbox"/> Other <input type="checkbox"/> To facilitate assembly <input type="checkbox"/> To improve reliability <input checked="" type="checkbox"/> To meet standards (RoHs compliant) <input type="checkbox"/> Part standardization <input type="checkbox"/> Product Safety		

Old part number	New part number	Description	Q'ty	Int	Page	Index	Note
GZ230020	GZ230023	Power Supply Unit:124W:RoHs	1	O/O	25	4	

**Change:** The materials for these parts were changed.

**Reason:** To comply with the RoHS Directive.

Model: C-P1		Date: 9-Sep-08	No.: MG094013
Modified Article: EEPROM (Engine Board)		Prepared by: Y.Gaman	
From: 1st Tech. Support Sec. Service Support Dept.			
Reason for Modification:	<input type="checkbox"/> Parts catalog correction <input type="checkbox"/> Vendor change <input type="checkbox"/> Other <input type="checkbox"/> To facilitate assembly <input type="checkbox"/> To improve reliability <input type="checkbox"/> To meet standards <input checked="" type="checkbox"/> Part standardization <input type="checkbox"/> Product Safety    (      )		

Old part number	New part number	Description	Q'ty	Int	Page	Index	Note
14075271	14076588	EEPROM - M24C02- WBN6P	1	O/O	73	138	

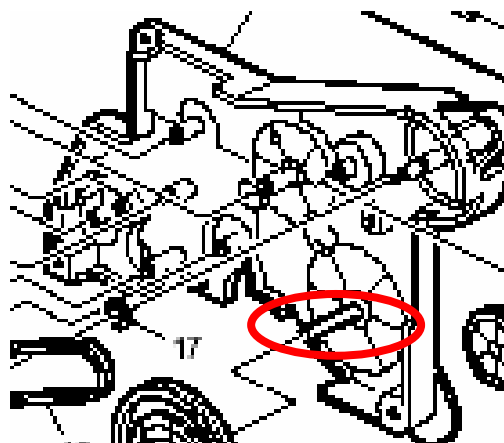
**Change/Reason:** Parts standardization.

Model: Model C-P1		Date: 24-Oct-08	No.: MG094014
Modified Article: Drive Unit Bracket		Prepared by: Y.Yoshida	
From: 1st Technical Support Sec. Service Support Dept.			
Reason for Modification:	<input type="checkbox"/> Parts catalog correction <input type="checkbox"/> To facilitate assembly <input type="checkbox"/> Part standardization	<input type="checkbox"/> Vendor change <input checked="" type="checkbox"/> To improve reliability <input type="checkbox"/> Other	<input type="checkbox"/> To meet standards (      )
Modification Schedule:			

Old Part Number	New Part Number	Description	Q'ty	Int	Page	Index	Note
G0521102	M0011122	Drive Unit Bracket	1→1		23	2	

**Change:** The material of the shaft was changed.

**Reason:** To further improve the performance of the drum drive mechanism.





Part Change Information List

Date: March 18, 2009

Model	Code	PCIL Number	PCIL Correction	Old part number	New part number	Description	Old Q'ty	New Q'ty	Int	3DPC	Page	Index	Set	Set Int	RTB	Note	Ref Number
Model C-P1	G094	200903		G0883539	G1113539	INTERNAL THERMISTOR	1	1	X/O		3	24					V0803650
Model C-P1	G095	200903		G0883539	G1113539	INTERNAL THERMISTOR	1	1	X/O		3	24					V0803650



Part Change Information List

Date: October 30, 2009

Model	Code	PCIL Nr.	PCIL Correction	Old part number	New part number	Description	Old Q'ty	New Q'ty	Int	3DPC	Page	Index	Set	Set Int	RTB	Note	Ref. Nr.	ECN Nr.
C-P1	G094	200910		G0963272	G1103272	COVER:MANUAL FEED TABLE	1	1	O/O		3	10					V0901377	9040416
C-P1	G095	200910		G0963272	G1103272	COVER:MANUAL FEED TABLE	1	1	O/O		3	10					V0901377	9040416





Part Change Information List

Date: Aug 31, 2010

Model	Code	PCIL Nr.	PCIL Correction	Old part number	New part number	Description	Old Q'ty	New Q'ty	Int	3DPC	Page	Index	Set	Set Int	RTB	Note	Ref. Nr.	ECN Nr.
C-P1	G094	201008		G0961563	G1751454	COVER:REAR	1	1	O/O		5	14					V1000299	
C-P1	G095	201008		G0961563	G1751454	COVER:REAR	1	1	O/O		5	14					V1000299	



## Part Change Information List

Date: February 28, 2011

Model	Code	PCIL Nr.	PCIL Correction	Old part number	New part number	Description	Old Q'ty	New Q'ty	Int	3DPC	Page	Index	Set	Set Int	RTB	Note	Ref. Nr.	ECN Nr.
C-P1	G094	201102		G0963050	G0963061	PAPER TRAY:ASS'Y	1	1	O/O		9	1					V1001773	10050307
C-P1	G095	201102		G0963050	G0963061	PAPER TRAY:ASS'Y	1	1	O/O		9	1					V1001773	10050307
C-P1	G094	201102		G0523140	G1292583	MAGNETIC CLUTCH ASS'Y - PAPER FEED	1	1	O/O		11	33					V1001681	
C-P1	G095	201102		G0523140	G1292583	MAGNETIC CLUTCH ASS'Y - PAPER FEED	1	1	O/O		11	33					V1001681	



Part Change Information List

Date: March 31, 2011

Model	Code	PCIL Nr.	PCIL Correcti on	Old part number	New part number	Description	Old Q'ty	New Q'ty	Int	3DPC	Page	Index	Set	Set Int	RTB	Note	Ref. Nr.	ECN Nr.
C-P1	G094	201103		AA000301	GA000058	DECAL:H-TEMP WARNING:115:CUD	1	1	O/O		17	18					V1002478	10090261
C-P1	G095	201103		AA000301	GA000058	DECAL:H-TEMP WARNING:115:CUD	1	1	O/O		17	18					V1002478	10090261



## Part Change Information List

Date: July 28, 2011

Model	Code	PCIL Nr.	PCIL Correction	Old part number	New part number	Description	Old Q'ty	New Q'ty	Int	3DPC	Page	Index	Set	Set Int	RTB	Note	Ref. Nr.	ECN Nr.
C-P1	G094	201107		G0963111	M0803111	CASSETTE COVER	1	1	X/O		5	18					V1100810	11030607
C-P1	G095	201107		G0963111	M0803111	CASSETTE COVER	1	1	X/O		5	18					V1100810	11030607



## Part Change Information List

Date: December 28, 2011

Model	Code	PCIL Nr.	PCIL Correction	Old part number	New part number	Description	Old Qty	New Qty	Int	3DPC	Page	Index	Set	Set Int	RTB	Note	Ref. Nr.	ECN Nr.
C-P1	G094	201112		G1751654	M0791654	COVER:REAR	1	1	X/O		5	14				G1751454&G1751654->M0791654	V1103598	
C-P1	G095	201112		G1751654	M0791654	COVER:REAR	1	1	X/O		5	14				G1751454&G1751654->M0791654	V1103598	



Part Change Information List

Date: June 29, 2012

Model	Code	PCIL Nr.	PCIL Correction	Old part number	New part number	Description	Old Qty	New Qty	Int	3DPC	Page	Index	Set	Set Int	RTB	Note	Ref. Nr.	ECN Nr.
C-P1	G094	201204		G1751454	G1751654	COVER:REAR:EU	1	1	O/O		5	14					V1001682	09120005
C-P1	G095	201204		G1751454	G1751654	COVER:REAR:EU	1	1	O/O		5	14					V1001682	09120005



Part Change Information List

Date: May 30, 2014

Model	Code	PCIL Number	PCIL Correction	Old part number	New part number	Description	Old Q'ty	New Q'ty	Int	3DPC	Page	Index	Set	Set Int	RTB	Note	Ref Number	ECN Number
C-P1	G094	201405		G0525060	M0015250	PCB:SYNC DETECTOR BOARD	1	1	O/O		7	27					V1301122	
C-P1	G095	201405		G0525060	M0015250	PCB:SYNC DETECTOR BOARD	1	1	O/O		7	27					V1301122	



Part Change Information List

Date: October 31, 2014

Model	Code	PCIL Number	PCIL Correction	Old part number	New part number	Description	Old Q'ty	New Q'ty	Int	3DPC	Page	Index	Set	Set Int	RTB	Note	Ref Number	ECN Number
C-P1	G094	201410		G0521274	M0791274	LEVER:MICRO SWITCH:REAR	1	1	X/O		21	8					V1402928	
C-P1	G095	201410		G0521274	M0791274	LEVER:MICRO SWITCH:REAR	1	1	X/O		21	8					V1402928	



Model	Code	PCIL Number	PCIL Correction	Old part number	New part number	Description	Old Q'ty	New Q'ty	Int	3DPC	Page	Index	Set	Set Int	RTB	Note	Ref Number	ECN Number
C-P1	G094	201501		G0525404	G1115404	HARNESS - TONER END SENSOR	1	1	X/O		13	12					V1403509	
C-P1	G095	201501		G0525404	G1115404	HARNESS - TONER END SENSOR	1	1	X/O		13	12					V1403509	