

Reissued: 5-Jun-02

Model: Model-J P1c	Date: 4-Jun-02	No.: RG082001a
--------------------	----------------	----------------

## RTB Correction

Subject: Machine Installation & Short Haul Transportation		Prepared by: H. Someya	
From: Technical Services sec. Service Planning Dept.			
Classification:	<input type="checkbox"/> Troubleshooting <input type="checkbox"/> Mechanical <input type="checkbox"/> Paper path <input type="checkbox"/> Other (      )	<input type="checkbox"/> Part information <input type="checkbox"/> Electrical <input type="checkbox"/> Transmit/receive	<input checked="" type="checkbox"/> Action required <input type="checkbox"/> Service manual revision <input type="checkbox"/> Retrofit information

## SYMPTOM:

At machine installation, the following types of white lines appear in black halftone areas at the same interval as the drum circumference:

- Horizontal and straight (broken/continous)
- Short, vertical and wavy

## CAUSE:

Vibrations during transport cause scratches on the black OPC drum, as the image transfer belt is always contacting the black PCU during this time.

**Note:** The lines are not visible with the Model-JP1b, as a different printer gamma is used -- the gamma used on the P1c is designed to bring out halftone areas more.

## SOLUTION:

### Permanent:

A modification will be applied whereby the black PCU and transfer belt unit are separated before shipping. This modification is required to allow the units to be separated and still be able to close the front cover (further details TBA in a reissue of this RTB).

### Temporary (from the beginning of mass-production):

Until the permanent solution can be applied, P1c machines are shipped with the transfer belt unit separated from the black PCU. Specifically, the transfer belt unit lever has been detached before shipping to allow the front cover to be closed.

**Reissued: 5-Jun-02**

Model: Model-J P1c

Date: 4-Jun-02

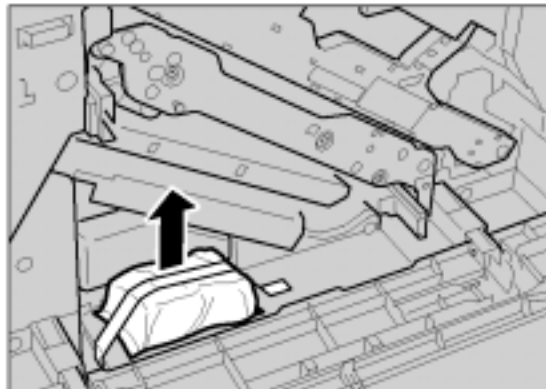
No.: RG082001a

Please see the following notes for machine installation and short-haul transport:

**1. At Machine Installation:**

The transfer belt unit lever has been detached and placed inside the machine as shown in the illustration. This lever must then be reattached at installation by the customer or service technician.

The attachment procedure for this lever has been packaged together with the machine.

**2. Short-haul Transport**

The notes for short-haul transport are the same as for the Model-J P1b, except for the additional procedure described below. Please also refer to RTB #RG060001 for additional notes on transport.

**Additional procedure for P1c short-hauls:**

1. Open the front cover.
2. Turn the transfer belt unit release lever counterclockwise to lower the transfer belt unit.
3. Remove the lever (1 screw).
4. Reinstall the lever when the machine arrives at the installation site.

Model: Model-J P1c		Date: 9-Jul-02	No.: RG082002
Subject: Firmware Modification		Prepared by: H. Someya	
From: Technical Services sec. Service Planning Dept.			
Classification:	<input type="checkbox"/> Troubleshooting <input checked="" type="checkbox"/> Part information <input type="checkbox"/> Action required <input type="checkbox"/> Mechanical <input type="checkbox"/> Electrical <input type="checkbox"/> Service manual revision <input type="checkbox"/> Paper path <input type="checkbox"/> Transmit/receive <input type="checkbox"/> Retrofit information <input type="checkbox"/> Other (      )		

This bulletin explains the firmware modification history for the Model-J P1c (details begin on page 2).

	BCU		Controller
Firmware Type	Main	Music	Controller
Remarks	File Name G077xxxx#.wrp # : suffix	File Name G077xxxx#.wrp # : suffix	File Name G082xxxx#.fls # : suffix

**Note:** Although the file names for the Main/Music firmware are the same as for the G060 printer (Model-J P1b), the file extensions are not. Therefore, these files cannot be used on the G060.

## RTB Revision List

Issue Date	Control Symbol	Revised contents
09-Jul-02	-	First edition

Model: Model-J P1c	Date: 9-Jul-02	No.: RG082002
--------------------	----------------	---------------

## Modification History

### 1. Engine Main Firmware

P/N	Version	Contents of Modification	Cut-in Month
G0775623	B1.17C	Firmware installed from the first mass production run.	
G0775623A	B1.18	<ul style="list-style-type: none"> <li>The following have been corrected: <ul style="list-style-type: none"> <li>※ Main scan magnification error (see RTB #RG060015 for details; to be released soon).</li> <li>※ SC471 caused by stop timing error for transfer belt contact motor.</li> <li>※ SC545 in fusing phase control mode.</li> <li>※ SC543</li> </ul> </li> </ul> <p><b>NOTE:</b> This version has <u>not</u> been released (see “side effect” below).</p>	May, 2002
G0775623B	B1.18B	<ul style="list-style-type: none"> <li>The following have been corrected: <ul style="list-style-type: none"> <li>※ Side effect for B1.18 SC545 modification (only for G082-17 models): The machine does not display “Ready” after recovery warm-up from Energy Saver 1 Mode in phase control mode (see RTB #RG060013 for details).</li> </ul> </li> </ul>	July, 2002

### 2. Engine MUSIC

P/N	Version	Contents of Modification	Cut-in Month
G0775624	1.06	Firmware installed from the first mass production run.	
G0775624A	1.07	The firmware header has been corrected for Japanese models only.	May, 2002

### 3. Controller Firmware

P/N	Version	Contents of Modification	Cut-in Month
G0825769	1.01	Firmware installed from the first mass production run.	

Reissued: 5-Nov-02

Model: Model-J P1c	Date: 9-Jul-02	No.: RG082002a
--------------------	----------------	----------------

## RTB Reissue

Subject: Firmware Modification		Prepared by: H. Someya	
From: Technical Services sec. Service Planning Dept.			
Classification:	<input type="checkbox"/> Troubleshooting <input type="checkbox"/> Mechanical <input type="checkbox"/> Paper path <input type="checkbox"/> Other (       )	<input checked="" type="checkbox"/> Part information <input type="checkbox"/> Electrical <input type="checkbox"/> Transmit/receive	<input type="checkbox"/> Action required <input type="checkbox"/> Service manual revision <input type="checkbox"/> Retrofit information

This bulletin explains the firmware modification history for the Model-J P1c (details begin on page 2).

	BCU		Controller
Firmware Type	Main	Music	Controller
Remarks	File Name G077xxx#.wrp # : suffix	File Name G077xxx#.wrp # : suffix	File Name G082xxx#.fls # : suffix

**Note:** Although the file names for the Main/Music firmware are the same as for the G060 printer (Model-J P1b), the file extensions are not. Therefore, these files cannot be used on the G060.

## RTB Revision List

Issue Date	Control Symbol	Revised contents
09-Jul-02	-	First edition
1-Nov-02	<<A>>	Engine: 1.18B -> 1.19 -> 1.21 -> 1.22

**Reissued: 5-Nov-02**

Model: Model-J P1c	Date: 9-Jul-02	No.: RG082002a
--------------------	----------------	----------------

**Modifications****1. Engine Main Firmware**

P/N	Version	Contents of Modification	Cut-in Month
G0775623C <<A>>	B1.19	<ul style="list-style-type: none"><li>The following have been corrected:<ul style="list-style-type: none"><li>※ When SP1-916-1 is set to 1, the machine may not reach the Ready condition after the main SW is turned on in low-temp, low-humidity environments.</li></ul></li></ul>	August, 2002
G0775623D <<A>>	B1.21	<ul style="list-style-type: none"><li>The following have been corrected:<ul style="list-style-type: none"><li>※ SC220-4 for machines with LD unit E-MAC2 installed.</li></ul></li></ul>	September, 2002
G0775623E <<A>>	B1.22	<ul style="list-style-type: none"><li>The following has been corrected:<ul style="list-style-type: none"><li>※ Paper jam with Series Printing when the exit tray setting is not the same for all individual jobs.</li></ul></li></ul>	October, 2002

**2. Engine MUSIC**

Nothing new this time

**3. Controller Firmware**

Nothing new this time

Model: General RTB		Date: 8-Nov-02	No.: RGene011
Subject: Euro symbol not printed with PS driver		Prepared by: T. Itoh	
From: Technical Services sec. Service Planning Dept.			
Classification:	<input checked="" type="checkbox"/> Troubleshooting <input type="checkbox"/> Mechanical <input type="checkbox"/> Paper path <input type="checkbox"/> Other (      )	<input type="checkbox"/> Part information <input type="checkbox"/> Electrical <input type="checkbox"/> Transmit/receive	<input checked="" type="checkbox"/> Action required <input type="checkbox"/> Service manual revision <input type="checkbox"/> Retrofit information

## SYMPTOM

When printing with the PS driver, the Euro currency symbol is not printed out with 112 of 136 fonts, which are stored in the font ROM in GW-based products.

The following are GW-based products:

Model-K3, Model-K P2, Russian-C2, Adonis- C2, Model-A P3, Model-J P1b, Model-J CF  
Model-U P1, Model-U C1, Martini-C1.

## CAUSE

The Euro currency symbol was not included in the font ROM.

## SOLUTION

### Temporary Solution (1)

A workaround for each operating system has been previously released on the FAQ page, and is included on pp. 5-8 below.

### Temporary Solution (2)

Although the font ROM will be modified as a permanent solution (details below), before this can be applied, the controller firmware has been modified on the following GW-based products:

Product	Firmware Version	Product	Firmware Version
Model-K3	1.01 (Controller)	Model-J P1b	2.18 (Controller)
Model-K P2	1.06.1 (Controller)	Model-J CF	1.11 (Printer Application)
Russian-C2	2.03 (Printer Application)	Model-U P1	2.20 (Printer Application)
Adonis-C2	3.09 (Printer Application)	Model-U C1	1.22 (Printer Application)
Model-A P3	1.08 (Controller)	Martini-C1	1.01 (Printer Application)

Specifically, the Euro currency symbol has been added along with the “PS fonts download” feature, which allows the symbol to be downloaded to machine RAM. Enable this feature by changing the setting of Bit SW#3-0 to “1 (ON)” in SP mode (default: OFF).

Model: General RTB

Date: 8-Nov-02

No.: RGene011

**Remarks for Temporary Solution 2:**

1. Switching PDL to PS takes approximate 7 to 10 seconds.

When PS fonts download is enabled, the Euro symbol is temporarily downloaded to the machine RAM at the first PS printing job, and whenever the PDL is switched from RPCS or PCL to PS. The total download time is approximately 7 to 10 seconds. This is because once the data is downloaded, it will remain in the RAM until the PDL is switched or the power turned off.

2. Printing high image area documents at 1200 dpi may cause a memory overflow error in machines equipped only with 32MB of memory (ex. Model-K P2).

This is because the PS fonts download feature uses approximately 800kB, which can bring the amount of available memory close to capacity with the above printing conditions.

Workaround:

- Printing at 600dpi may prevent an overflow, even with just the 32MB memory installed.
- Changing the memory usage setting from “Frame Priority” to “Font Priority” may prevent an overflow.

**Permanent Solution**

Modification of the font ROM on the ROM DIMM or the Controller Board, from October '02, production or later (details differ depending on the model). Specifically, the Euro currency symbol has been added to the 112 fonts mentioned above.

**Note:**

1. When the new ROM DIMM or Controller Board is installed, it is not necessary to disable the PS fonts download feature (temporary solution).
2. An MB will be issued separately announcing the P/N change for the ROMM DIMM and Controller Boards, and cut-in serial number.

ROM DIMM and Controller Board P/N:

Model	Where the font ROM is soldered	Current P/N	Model	Where the font ROM is soldered	Current P/N
Model-K P2	Controller	G0735712	Model-J CF	ROM DIMM	G5706687
		G0745712	Model-U P1	ROM DIMM	G0705851
Adonis-C2	ROM DIMM	B3615117	Model-U C1	ROM DIMM	B5295117
		B3625118			B4635117
Model-A P3	Controller	G0656022	Martini-C1	ROM DIMM	G3395117
		G0656023			G3385117
Russian-C2	ROM DIMM	B4615117	Model-K3	Controller	B5165750
		B4535117			
Model-J P1b	ROM DIMM	G0776120			



Model: General RTB

Date: 8-Nov-02

No.: RGene011

## Font Table

	Euro symbol is printed correctly.
	This is a symbol font, so no countermeasure is applied.
	Both temporary and permanent solutions work to print out the Euro currency symbol correctly.

AlbertusMT	Helvetica	Univers
AlbertusMT-Italic	Helvetica-Bold	Univers-Bold
AlbertusMT-Light	Helvetica-BoldOblique	Univers-BoldExt
AntiqueOlive-Bold	Helvetica-Condensed	Univers-BoldExtObl
AntiqueOlive-Compact	Helvetica-Condensed-Bold	Univers-BoldOblique
AntiqueOlive-Italic	Helvetica-Condensed-BoldObl	Univers-Condensed
AntiqueOlive-Roman	Helvetica-Condensed-Oblique	Univers-CondensedBold
Apple-Chancery	Helvetica-Narrow	Univers-CondensedBoldOblique
Arial-BoldItalicMT	Helvetica-Narrow-Bold	Univers-CondensedOblique
Arial-BoldMT	Helvetica-Narrow-BoldOblique	Univers-Extended
Arial-ItalicMT	Helvetica-Narrow-Oblique	Univers-ExtendedObl
ArialMT	Helvetica-Oblique	Univers-Light
AvantGarde-Book	HoeflerText-Black	Univers-LightOblique
AvantGarde-BookOblique	HoeflerText-BlackItalic	Univers-Oblique
AvantGarde-Demi	HoeflerText-Italic	Wingdings-Regular
AvantGarde-DemiOblique	HoeflerText-Ornaments	ZapfChancery-MediumItalic
Bodoni	HoeflerText-Regular	ZapfDingbats
Bodoni-Bold	JoannaMT	
Bodoni-BoldItalic	JoannaMT-Bold	
Bodoni-Italic	JoannaMT-BoldItalic	
Bodoni-Poster	JoannaMT-Italic	
Bodoni-PosterCompressed	LetterGothic	
Bookman-Demi	LetterGothic-Bold	
Bookman-DemiItalic	LetterGothic-BoldSlanted	
Bookman-Light	LetterGothic-Slanted	
Bookman-LightItalic	LubalinGraph-Book	
Carta	LubalinGraph-BookOblique	
Chicago	LubalinGraph-Demi	
Clarendon	LubalinGraph-DemiOblique	
Clarendon-Bold	Marigold	
Clarendon-Light	MonaLisa-Recut	
CooperBlack	Monaco	
CooperBlack-Italic	NewCenturySchlbk-Bold	
Copperplate-ThirtyThreeBC	NewCenturySchlbk-BoldItalic	
Copperplate-ThirtyTwoBC	NewCenturySchlbk-Italic	
Coronet-Regular	NewCenturySchlbk-Roman	
Courier	NewYork	
Courier-Bold	Optima	
Courier-BoldOblique	Optima-Bold	
Courier-Oblique	Optima-BoldItalic	
Eurostile	Optima-Italic	
Eurostile-Bold	Oxford	
Eurostile-BoldExtendedTwo	Palatino-Bold	
Eurostile-ExtendedTwo	Palatino-BoldItalic	

Model: General RTB	Date: 8-Nov-02	No.: RGene011
--------------------	----------------	---------------

Geneva	Palatino-Italic
GillSans	Palatino-Roman
GillSans-Bold	StempelGaramond-Bold
GillSans-BoldCondensed	StempelGaramond-BoldItalic
GillSans-BoldItalic	StempelGaramond-Italic
GillSans-Condensed	StempelGaramond-Roman
GillSans-ExtraBold	Symbol
GillSans-Italic	Tekton
GillSans-Light	Times-Bold
GillSans-LightItalic	Times-BoldItalic
Goudy	Times-Italic
Goudy-Bold	Times-Roman
Goudy-BoldItalic	TimesNewRomanPS-BoldItalicMT
Goudy-ExtraBold	TimesNewRomanPS-BoldMT
Goudy-Italic	TimesNewRomanPS-ItalicMT
	TimesNewRomanPSMT

Model: General RTB

Date: 8-Nov-02

No.: RGene011

## Workaround Announced on the FAQ Page

### Question:

Euro Fonts printing problem

### Answer:

If Euro Fonts can't be printed by the PS driver, the following solutions may be effective.

### Solution

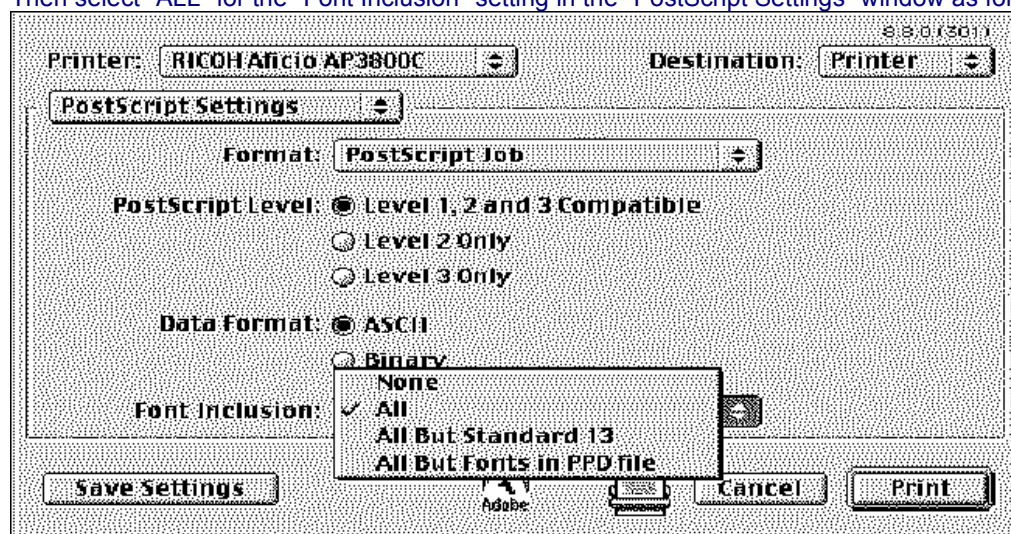
MacOS 9.x / 8.x

Use the AdobePS 8.8 printer driver.

Get the printer driver from the Adobe site on the web.

<http://www.adobe.com/support/downloads/product.jsp?product=44&platform=Macintosh>

Then select "ALL" for the "Font Inclusion" setting in the "PostScript Settings" window as follows.



### Windows 95

Update Windows95 to "Euro Currency Support for Windows95".

You can get it from the following URL.

[http://www.microsoft.com/windows95/downloads/contents/WURecommended/S\\_WUFeatured/W95EuroPatch/Default.asp](http://www.microsoft.com/windows95/downloads/contents/WURecommended/S_WUFeatured/W95EuroPatch/Default.asp)

Then the "Add Euro Currency Symbol to PostScript Fonts" check box is available.

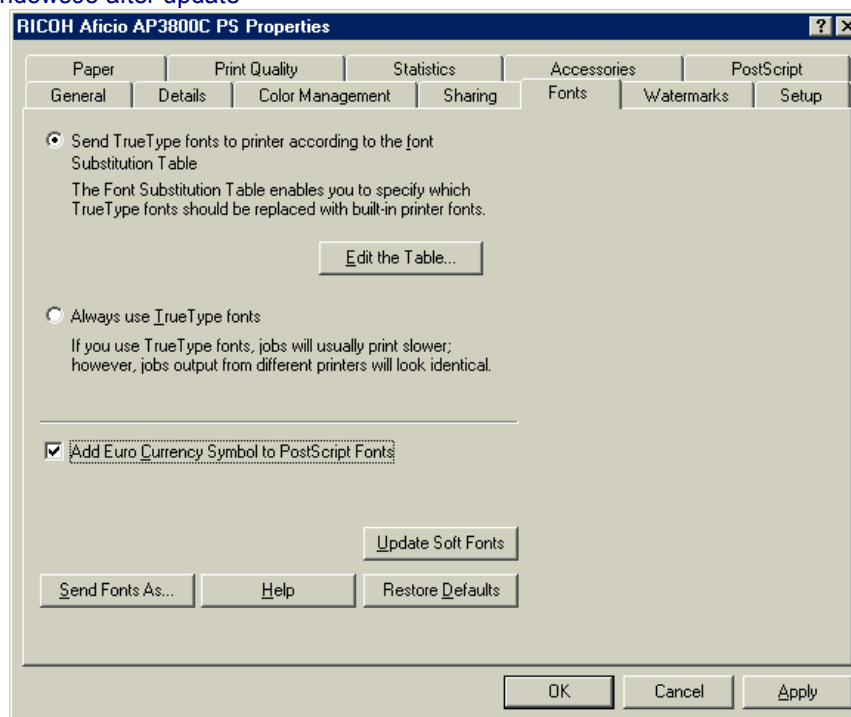
Check "Add Euro Currency Symbol to PostScript Fonts". (Before update, the check box doesn't work. )

Model: General RTB

Date: 8-Nov-02

No.: RGene011

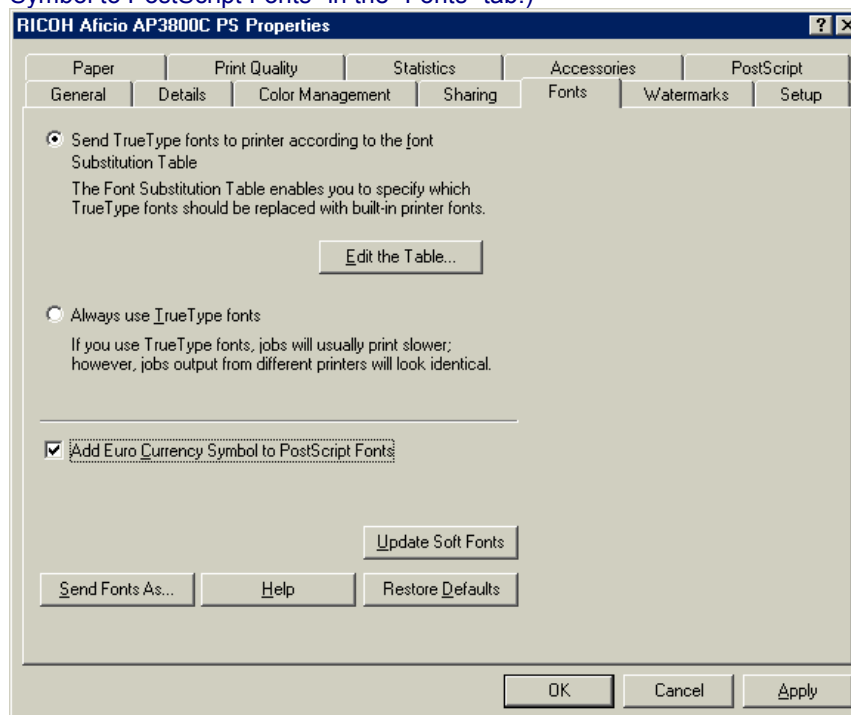
## Windows95 after update



## Windows 98 / ME / NT4.0 / XP

Check "Add Euro Currency Symbol to PostScript Fonts" .

Windows 98 / ME (Note: The AdobePS driver version 4.3.1 or later has "Add Euro Currency Symbol to PostScript Fonts" in the "Fonts" tab.)

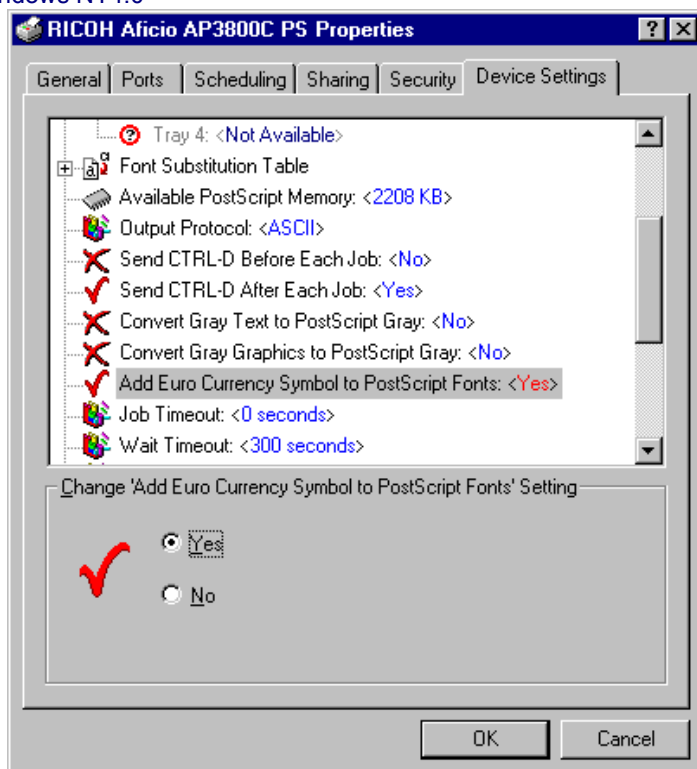


Model: General RTB

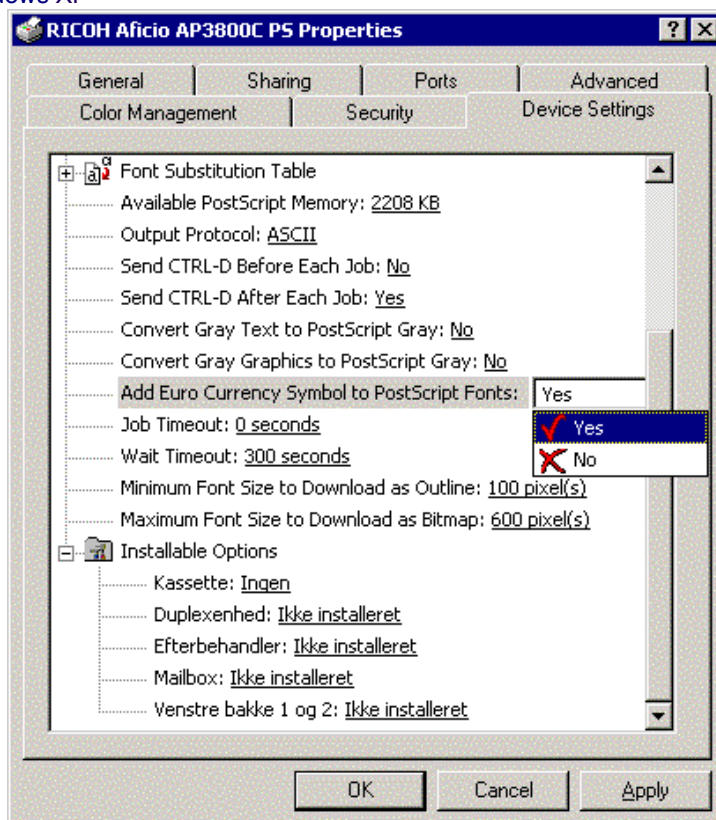
Date: 8-Nov-02

No.: RGene011

## Windows NT4.0



## Windows XP



Model: General RTB

Date: 8-Nov-02

No.: RGene011

## Windows 2000

Update the printer driver to v5.5.2 or later.

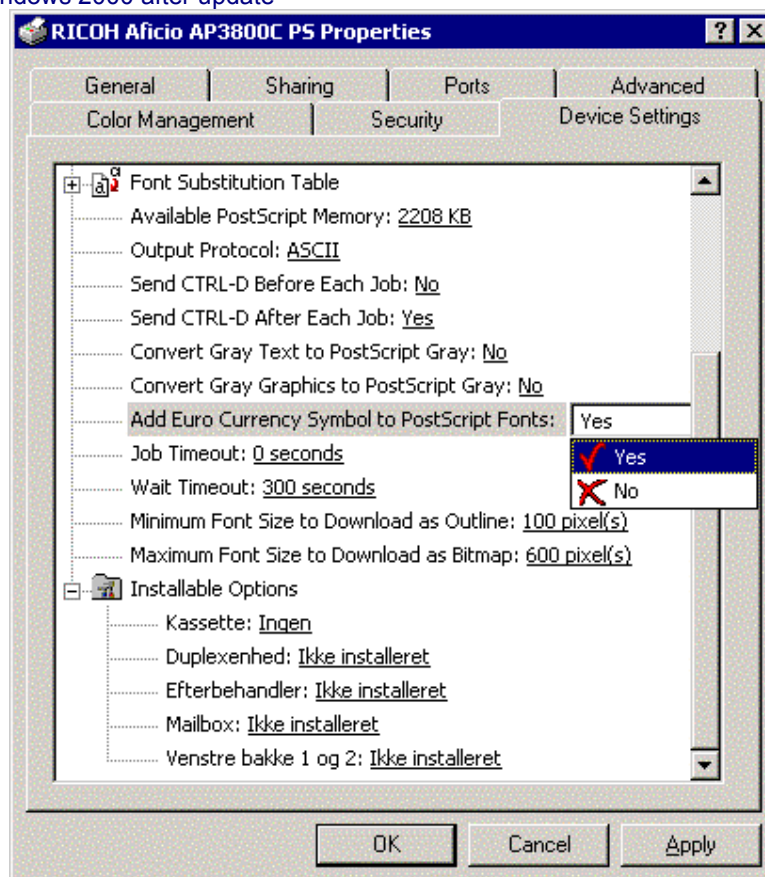
You can get it from the printer driver v1.0.6 on the Adobe web site that includes the W2000 driver v 5.5.2.

<http://www.adobe.com/support/downloads/product.jsp?product=44&platform=Windows>

Then the "Add Euro Currency Symbol to PostScript Fonts" check box is displayed.

Check "Add Euro Currency Symbol to PostScript Fonts".

## Windows 2000 after update



Reissued: 2-Aug-04

Model: Model-J P1c	Date: 9-Jul-02	No.: RG082002b
--------------------	----------------	----------------

## RTB Reissue

Subject: Firmware Modification		Prepared by: H. Taguchi	
From: 1st Tech. Support Sec. Service Support Dept.			
Classification:	<input type="checkbox"/> Troubleshooting <input type="checkbox"/> Mechanical <input type="checkbox"/> Paper path <input type="checkbox"/> Other (       )	<input checked="" type="checkbox"/> Part information <input type="checkbox"/> Electrical <input type="checkbox"/> Transmit/receive	<input type="checkbox"/> Action required <input type="checkbox"/> Service manual revision <input type="checkbox"/> Retrofit information

This bulletin explains the firmware modification history for the Model-J P1c (details begin on page 2).

	BCU		Controller
Firmware Type	Main	Music	Controller
Remarks	File Name G077xxx#.wrp # : suffix	File Name G077xxx#.wrp # : suffix	File Name G082xxx#.fls # : suffix

**Note:** Although the file names for the Main/Music firmware are the same as for the G060 printer (Model-J P1b), the file extensions are not. Therefore, these files cannot be used on the G060.

## RTB Revision List

Issue Date	Control Symbol	Revised contents
09-Jul-02	-	First edition
1-Nov-02	<<A>>	Engine: 1.18B -> 1.19 -> 1.21 -> 1.22
<b>2-Aug-04</b>	<b>&lt;&lt;B&gt;&gt;</b>	<b>Engine: 1.22 → 1.23 → 1.24 → 1.25 → 1.26 → 1.27 → 1.28</b>

Reissued: 2-Aug-04

Model: Model-J P1c	Date: 9-Jul-02	No.: RG082002b
--------------------	----------------	----------------

## [ Modification History ]

### 1. Engine Main Firmware

P/N	Version	Contents of Modification	Cut-in Month
G0775623	B1.17C	Firmware installed from the first mass production run.	
G0775623A	B1.18	<ul style="list-style-type: none"> <li>The following have been corrected: <ul style="list-style-type: none"> <li>※ Main scan magnification error (see RTB #RG060015 for details; to be released soon).</li> <li>※ SC471 caused by stop timing error for transfer belt contact motor.</li> <li>※ SC545 in fusing phase control mode.</li> <li>※ SC543</li> </ul> </li> </ul> <p><b>NOTE:</b> This version has <u>not</u> been released (see “side effect” below).</p>	May, 2002
G0775623B	B1.18B	<ul style="list-style-type: none"> <li>The following have been corrected: <ul style="list-style-type: none"> <li>※ Side effect for B1.18 SC545 modification (only for G082-17 models): The machine does not display “Ready” after recovery warm-up from Energy Saver 1 Mode in phase control mode (see RTB #RG060013 for details).</li> </ul> </li> </ul>	July, 2002
G0775623C <<A>>	B1.19	<ul style="list-style-type: none"> <li>The following have been corrected: <ul style="list-style-type: none"> <li>※ When SP1-916-1 is set to 1, the machine may not reach the Ready condition after the main SW is turned on in low-temp, low-humidity environments.</li> </ul> </li> </ul>	August, 2002
G0775623D <<A>>	B1.21	<ul style="list-style-type: none"> <li>The following have been corrected: <ul style="list-style-type: none"> <li>※ SC220-4 for machines with LD unit E-MAC2 installed.</li> </ul> </li> </ul>	September, 2002
G0775623E <<A>>	B1.22	<ul style="list-style-type: none"> <li>The following has been corrected: <ul style="list-style-type: none"> <li>※ Paper jam with Series Printing when the exit tray setting is not the same for all individual jobs.</li> </ul> </li> </ul>	October, 2002
G0775623G <<B>>	B1.24	<ul style="list-style-type: none"> <li><i>Supports 2-level European cabinet paper feeder: Firmware modified so that if the destination code is set to Europe, the paper will be exited from the lower position whenever the Finisher and feed station other than the paper feed unit is installed (EU cabinet feeder is the same height as a 2-level PFU, i.e. requires lower-position exit).</i></li> </ul>	December, 2002



Reissued: 2-Aug-04

Model: Model-J P1c	Date: 9-Jul-02	No.: RG082002b
--------------------	----------------	----------------

P/N	Version	Contents of Modification	Cut-in Month
G0775623H <<B>>	B1.25	<ul style="list-style-type: none"> <li>Fusing belt rotation timing (warm-up) and lamp off timing (job end) have been changed to prevent unnecessary occurrences of SC543 (heating roller fusing lamp overheat).</li> <li>Occurrence conditions for SC552 changed from 150sec → 210sec to prevent unnecessary occurrences.</li> </ul> <p>The following has been fixed:</p> <ul style="list-style-type: none"> <li>Fusing jam misdetection with left door closed due to vibration of fusing exit sensor feeler.</li> </ul>	March, 2003
G0775623J <<B>>	B1.26	<p>The following have been fixed.</p> <ul style="list-style-type: none"> <li>"Copying" displayed for about 30 seconds before copying begins</li> <li>Color drum lock at first color print following a 3-hour interval when energy saver is disabled.</li> </ul>	April, 2003
G0775623K <<B>>	B1.27	<ul style="list-style-type: none"> <li>The following have been fixed: <ul style="list-style-type: none"> <li>The second page is not transported to the Finisher stapling tray with duplex printing and mixed paper size stapling jobs.</li> <li>The machine freezes when the paper height sensor detects paper jam following jam recovery.</li> </ul> </li> </ul>	April, 2004
G0775623L <<B>>	B1.28	<p><b>The transfer unit has been modified from a transfer brush to a transfer roller system in order to further improve the accuracy of color line positioning. In accordance with this change, two types of firmware have been released as follows.</b></p> <p><b>B1.28: This is for the old type transfer unit (Transfer brush type)</b>  <b>C1.28: This is for the new type transfer unit (Transfer roller type)</b></p>	August, 2004
	C1.28	<ul style="list-style-type: none"> <li>Transfer current has been changed for the new transfer unit (Transfer roller type).</li> </ul> <p><b>Note: The transfer unit has been modified from a transfer brush to a transfer roller system in order to further improve the accuracy of color line positioning. In accordance with this change, this firmware should be upgraded at transfer unit (Transfer roller type) installation.</b></p>	

## 2. Engine MUSIC

P/N	Version	Contents of Modification	Cut-in Month
G0775624	1.06	Firmware installed from the first mass production run.	
G0775624A	1.07	The firmware header has been corrected for Japanese models only.	May, 2002



# Technical Bulletin

PAGE: 4/4

Reissued: 2-Aug-04

Model: Model-J P1c	Date: 9-Jul-02	No.: RG082002b
--------------------	----------------	----------------

## 3. Controller Firmware

P/N	Version	Contents of Modification	Cut-in Month
G0825769	1.01	Firmware installed from the first mass production run.	

Model: Model-J P1c		Date: 2-Aug-04	No.: RG082003
Subject: Transfer unit installation (Transfer roller type)		Prepared by: H.Taguchi	
From: 1st Tech. Support Sec. Service Support Dept.			
Classification:	<input checked="" type="checkbox"/> Troubleshooting <input type="checkbox"/> Part information <input type="checkbox"/> Action required <input type="checkbox"/> Mechanical <input type="checkbox"/> Electrical <input type="checkbox"/> Service manual revision <input type="checkbox"/> Paper path <input type="checkbox"/> Transmit/receive <input type="checkbox"/> Retrofit information <input type="checkbox"/> Other (      )		

The transfer unit has been modified from a transfer brush to a transfer roller system in order to further improve the accuracy of color line positioning. In accordance with this change, the following firmware upgrade and SP mode setting should be performed at transfer unit installation.

## - Model J-P1b, Model J-P1CF -

1. Upgrade to the following firmware.

Model:	Code:	Engine Firmware:	System Firmware:
Model J-P1b	G060	B1.28 or newer	2.22 or newer
Model J-P1CF	G060 + G570	B1.28 or newer	1.12 or newer

2. Do the following to allow the machine to detect the new unit.
  1. Access SP2-399-001 [Trans\_Cur\_Chg] and select "1".
  2. Select "OK".
  3. Exit SP mode and turn the main switch Off/On.

Number:	Description:	Default Setting:	Adjustable Range:
SP2-399-001	Trans_Cur_Chg	0	0: Transfer Brush Type <b>1: Transfer Roller Type</b>

Model: Model-J P1c	Date: 2-Aug-04	No.: RG082003
--------------------	----------------	---------------

## - Model J-P1c -

In accordance with this change, two types of firmware for have been released as follows.

- B1.28: This is for the old transfer unit (Transfer brush type)
- **C1.28: This is for the new transfer unit (Transfer roller type)**

1. Upgrade to the following firmware (SP mode setting is automatically performed).

Model:	Code:	Engine Firmware:	System Firmware:
Model J-P1c	G082	C1.28 or newer	(Unnecessary)

- The firmware for models J-P1c and J-P1b are different (ex. **C1.28** vs. **B1.28**).
- If installing the new transfer unit on a J-P1c machine with Engine **B1.28 or newer** already installed, and you wish to update to a C-version firmware with the same numeric name (e.g. from **B1.28** → **C1.28**), please be sure to 1) first downgrade to B1.27 and then 2) install **C1.28 or newer**. This is because it is not possible to directly update a Bxxx version to a Cxxx version with the same numeric name.

Reissued: 2-Dec-04

Model: Model-J P1c	Date: 9-Jul-02	No.: RG082002c
--------------------	----------------	----------------

## RTB Reissue

Subject: Firmware Modification		Prepared by: H.Someya	
From: 1st Tech. Support Sec. Service Support Dept.			
Classification:	<input type="checkbox"/> Troubleshooting <input type="checkbox"/> Mechanical <input type="checkbox"/> Paper path <input type="checkbox"/> Other (       )	<input checked="" type="checkbox"/> Part information <input type="checkbox"/> Electrical <input type="checkbox"/> Transmit/receive	<input type="checkbox"/> Action required <input type="checkbox"/> Service manual revision <input type="checkbox"/> Retrofit information

This bulletin explains the firmware modification history for the Model-J P1c (details begin on page 2).

	BCU		Controller
Firmware Type	Main	Music	Controller
Remarks	File Name G077xxx#.wrp # : suffix	File Name G077xxx#.wrp # : suffix	File Name G082xxx#.fls # : suffix

**Note:** Although the file names for the Main/Music firmware are the same as for the G060 printer (Model-J P1b), the file extensions are not. Therefore, these files cannot be used on the G060.

## RTB Revision List

Issue Date	Control Symbol	Revised contents
09-Jul-02	-	First edition
1-Nov-02	<<A>>	Engine: 1.18B -> 1.19 -> 1.21 -> 1.22
2-Aug-04	<<B>>	Engine: 1.22 → 1.23 → 1.24 → 1.25 → 1.26 → 1.27 → 1.28
<b>2-Dec-04</b>	<b>&lt;&lt;C&gt;&gt;</b>	<b>Controller: 1.0.1 -&gt; 1.0.3</b>

**Reissued: 2-Dec-04**

Model: Model-J P1c	Date: 9-Jul-02	No.: RG082002c
--------------------	----------------	----------------

**[ Modification History ]**
**1. Engine Main Firmware**

P/N	Version	Contents of Modification	Cut-in Month
G0775623	B1.17C	Firmware installed from the first mass production run.	
G0775623A	B1.18	<ul style="list-style-type: none"> <li>The following have been corrected: <ul style="list-style-type: none"> <li>※ Main scan magnification error (see RTB #RG060015 for details; to be released soon).</li> <li>※ SC471 caused by stop timing error for transfer belt contact motor.</li> <li>※ SC545 in fusing phase control mode.</li> <li>※ SC543</li> </ul> </li> </ul> <p><b>NOTE:</b> This version has <u>not</u> been released (see “side effect” below).</p>	May, 2002
G0775623B	B1.18B	<ul style="list-style-type: none"> <li>The following have been corrected: <ul style="list-style-type: none"> <li>※ Side effect for B1.18 SC545 modification (only for G082-17 models): The machine does not display “Ready” after recovery warm-up from Energy Saver 1 Mode in phase control mode (see RTB #RG060013 for details).</li> </ul> </li> </ul>	July, 2002
G0775623C <<A>>	B1.19	<ul style="list-style-type: none"> <li>The following have been corrected: <ul style="list-style-type: none"> <li>※ When SP1-916-1 is set to 1, the machine may not reach the Ready condition after the main SW is turned on in low-temp, low-humidity environments.</li> </ul> </li> </ul>	August, 2002
G0775623D <<A>>	B1.21	<ul style="list-style-type: none"> <li>The following have been corrected: <ul style="list-style-type: none"> <li>※ SC220-4 for machines with LD unit E-MAC2 installed.</li> </ul> </li> </ul>	September, 2002
G0775623E <<A>>	B1.22	<ul style="list-style-type: none"> <li>The following has been corrected: <ul style="list-style-type: none"> <li>※ Paper jam with Series Printing when the exit tray setting is not the same for all individual jobs.</li> </ul> </li> </ul>	October, 2002
G0775623G <<B>>	B1.24	<ul style="list-style-type: none"> <li>Supports 2-level European cabinet paper feeder: Firmware modified so that if the destination code is set to Europe, the paper will be exited from the lower position whenever the Finisher and feed station other than the paper feed unit is installed (EU cabinet feeder is the same height as a 2-level PFU, i.e. requires lower-position exit).</li> </ul>	December, 2002

**Reissued: 2-Dec-04**

Model: Model-J P1c	Date: 9-Jul-02	No.: RG082002c
--------------------	----------------	----------------

P/N	Version	Contents of Modification	Cut-in Month
G0775623H <<B>>	B1.25	<ul style="list-style-type: none"><li>Fusing belt rotation timing (warm-up) and lamp off timing (job end) have been changed to prevent unnecessary occurrences of SC543 (heating roller fusing lamp overheating).</li><li>Occurrence conditions for SC552 changed from 150sec → 210sec to prevent unnecessary occurrences.</li></ul> <p>The following has been fixed:</p> <ul style="list-style-type: none"><li>Fusing jam misdetection with left door closed due to vibration of fusing exit sensor feeler.</li></ul>	March, 2003
G0775623J <<B>>	B1.26	<p>The following have been fixed.</p> <ul style="list-style-type: none"><li>"Copying" displayed for about 30 seconds before copying begins</li><li>Color drum lock at first color print following a 3-hour interval when energy saver is disabled.</li></ul>	April, 2003
G0775623K <<B>>	B1.27	<ul style="list-style-type: none"><li>The following have been fixed:<ul style="list-style-type: none"><li>The second page is not transported to the Finisher stapling tray with duplex printing and mixed paper size stapling jobs.</li><li>The machine freezes when the paper height sensor detects paper jam following jam recovery.</li></ul></li></ul>	April, 2004
G0775623L <<B>>	B1.28	<p>The transfer unit has been modified from a transfer brush to a transfer roller system in order to further improve the accuracy of color line positioning. In accordance with this change, two types of firmware have been released as follows.</p> <p>B1.28: This is for the old type transfer unit (Transfer brush type) C1.28: This is for the new type transfer unit (Transfer roller type)</p>	August, 2004
	C1.28	<ul style="list-style-type: none"><li>Transfer current has been changed for the new transfer unit (Transfer roller type).</li></ul> <p>Note: The transfer unit has been modified from a transfer brush to a transfer roller system in order to further improve the accuracy of color line positioning. In accordance with this change, this firmware should be upgraded at transfer unit (Transfer roller type) installation.</p>	

## 2. Engine MUSIC

P/N	Version	Contents of Modification	Cut-in Month
G0775624	1.06	Firmware installed from the first mass production run.	
G0775624A	1.07	The firmware header has been corrected for Japanese models only.	May, 2002


**Reissued: 2-Dec-04**

Model: Model-J P1c	Date: 9-Jul-02	No.: RG082002c
--------------------	----------------	----------------

**3. Controller Firmware**

P/N	Version	Contents of Modification	Cut-in Month
G0825769	1.01	Firmware installed from the first mass production run.	
<b>G0825769</b> <<C>>	<b>1.0.3</b>	<p><b>IMPORTANT: See "Procedure for Updating to Controller Firmware v1.0.3" below.</b></p> <p><i>The following have been fixed.</i></p> <ul style="list-style-type: none"> <li><i>Finisher jam.</i>  <i>Conditions:</i> <ol style="list-style-type: none"> <li><i>Many staple jobs are printed out continuously from the printer queue, AND</i></li> <li><i>One of these staple jobs is only one page.</i></li> </ol> <i>Change: When many staple jobs are in the queue, there is a short pause between jobs. This is because the machine prints only one job at a time.</i> </li> <li><i>"Times Developments" appears on the counter sheet, even if SP5-930-1 (Meter Click Mode) is ON and SP5-045-1 (Counter Method) is set to "Prints".</i></li> </ul>	

**Procedure for Updating to Controller Firmware v1.0.3**

- 1. Print out the configuration page.**
- 2. Turn OFF SP5-930-1 (Meter Click Mode).**
- 3. Install v1.0.3 as follows:**
  - a) Connect the printer to the PC with a parallel cable.**
  - b) Hold down the Cancel and Left arrow keys and turn the main power ON. Continue to hold down the keys until "Memory Installed xxxMB" is displayed on the LCD (approx. 15 sec.).**
  - c) "Entering... Download Mode" is displayed after the machine finishes a memory check and self-diagnostics (approx. 40 sec.).**
  - d) Access a DOS prompt or command prompt on the PC. Type "Copy" **  
**Note: The firmware will be transferred to the printer. The LCD displays the number of bytes transferred.**
  - e) When the transfer is finished, "Download done. Programming..." is displayed and the machine reboots.**
  - f) Print out the configuration page and make sure v1.0.3 was installed.**



**Reissued: 2-Dec-04**

Model: Model-J P1c	Date: 9-Jul-02	No.: RG082002c
--------------------	----------------	----------------

**4. Turn ON SP5-930-1 (Meter Click Mode).**

**5. Reprogram the controller settings.**

***Important: Use the values on the configuration page you printed out in Step 1.***