

Printer Maintenance Kit Type 3800C

(Code: G765)

For Machine Code: G060

MAINTENANCE GUIDE

⚠ WARNING:

- ***Do not incinerate spilled toner or used toner. Toner dust is flammable and might ignite when exposed to an open flame. Disposal should take place at an authorized dealer or an appropriate collection site. If you dispose of the used toner containers yourself, dispose of them according to local regulations.***

⚠ CAUTION:

- *The inside of the machine becomes very hot. Do not touch the parts with a label indicating a "hot surface". Touching a "hot surface" could result in a burn.*
- *Keep toner (used or unused) and the toner cartridge out of reach of children.*
- *Our products are engineered to meet the highest standards of quality and functionality. When purchasing expendable supplies, we recommend using only those provided by an authorized dealer.*
- *The fusing unit becomes very hot. When installing the new fusing unit, turn off the printer and wait about a half hour. After that, install the new fusing unit. Not waiting for the unit to cool down can result in a burn.*

Replacing the Fusing Unit

- 1 Check the contents of the box for the following items:

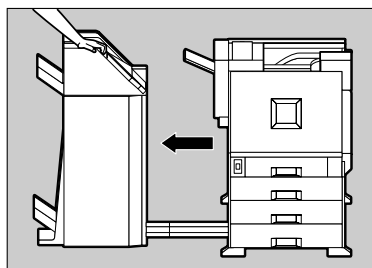
Description	Q'ty
Fusing Unit	1
Maintenance Guide (This manual)	1

- 2 Be sure to check the following points:

- The power switch is turned off.
- The power cord is unplugged from the wall outlet.
- The interface cable is unplugged from the printer.

- 3 If the 2 Tray Finisher is installed, detach it from the printer.

- 1 Hold the handle at the top of the 2 Tray Finisher firmly with one hand, pull the 2 Tray Finisher straight out, and let go when it stops.

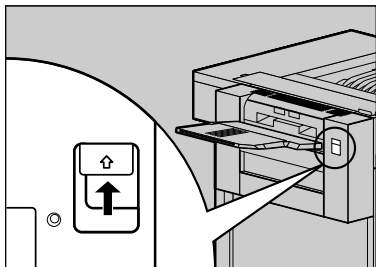


ZDJP201J

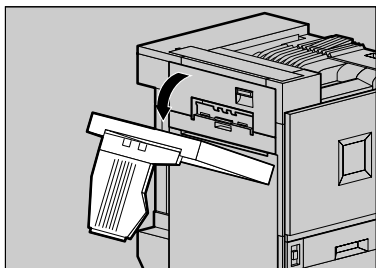
The 2 Tray Finisher is detached from the printer.

- 4** If the Duplex Unit is installed, open the Duplex Reversal Unit.

- ①** Push up the lock release button and keep it in place.



- ②** Lower the Duplex Reversal Unit slowly until it stops.



Important

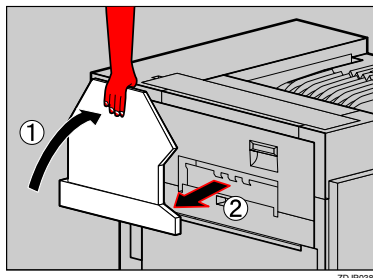
- ❑ Open the Duplex Reversal Unit after detaching the 2 Tray Finisher from the printer.

Note

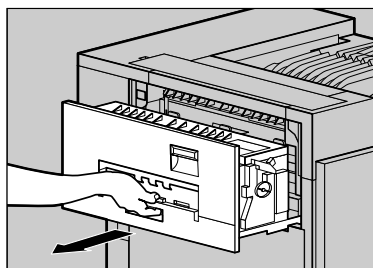
- ❑ You do not have to remove the External Tray even if the 2 Tray Finisher is attached.

The Duplex Reversal Unit is opened.

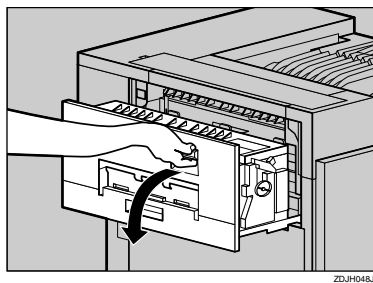
- 5** If the external tray is attached to the printer, raise it in the direction of the arrow (①), and remove it (②).



- 6** Pull out the left cover of the printer.



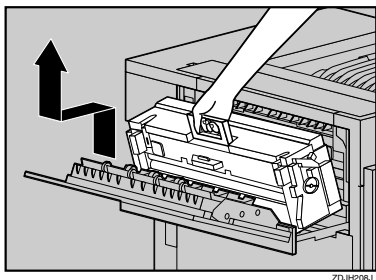
- 7** Open the upper left cover.



Important

- ❑ Do not touch any areas other than the handle.

- 8** Holding the green handle, pull up the Fusing Unit slowly in the direction of the arrow, and then place it on the stable and level stand.

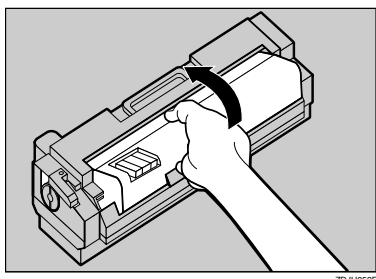


- 9** Take out the new Fusing Unit from the bag and place it on a stable and level stand.

Important

- ☐ A3 paper which comes with the new Fusing Unit will be used in a later step, so be careful not to lose it.

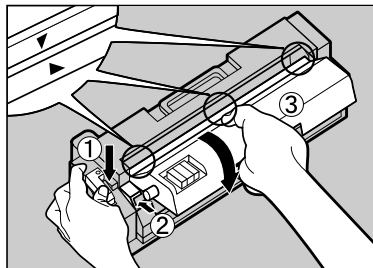
- 10** Remove the Fuser Oil Unit in the direction of the arrow.



Important

- ☐ Do not touch inside of the Fusing Unit.
- ☐ Be careful not to touch the oil.

- 11** Attach the Fuser Oil Unit removed in step 10 to the new Fusing Unit. Hold the Fuser Oil Unit in the manner as shown in the illustration. Match (▲) on the front of the Fuser Oil Unit and (▼) on the Fusing Unit at three places. While pushing the green lever on the left side of the Fusing Unit (①), insert the left and right protrusions of the Fuser Oil Unit into the white holders of the Fusing Unit (②), and move the Fuser Oil Unit in the direction shown by the arrow (③) to attach the Fuser Oil Unit to the Fusing Unit.

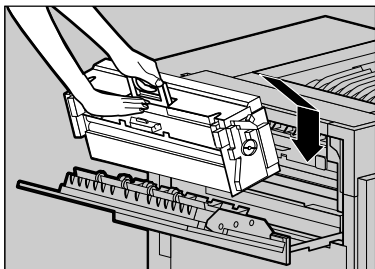


Important

- ☐ Be careful not to get oil on the metal part of the left side of the Fuser Oil Unit.

- 12** Put the removed fuser oil unit in the bag that enclosed the new Fusing Unit, and then seal it.

- 13** Holding the green handle of the new Fusing Unit, use your other hand to push the area right in front of the handle to create a slight slant, and then push the Fusing Unit slowly to the back.

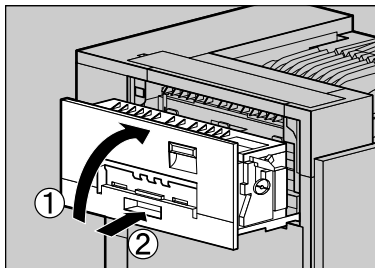


ZD.JH050E

Important

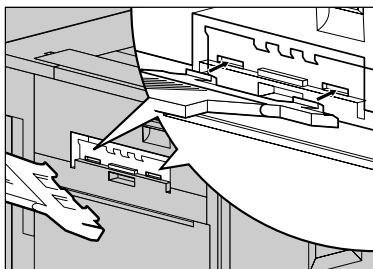
- ☐ Confirm that the Fusing Unit is properly positioned in the machine.

- 14** Close the upper left cover (①) and push it slowly to the back until it clicks into place (②).



ZD.JH051J

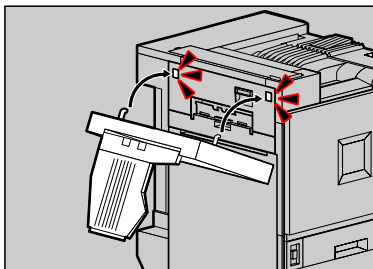
- 15** If you removed the external tray in step 5, reattach it to the printer. Insert the hooks of the external tray into the printer slits, and lower it toward you.



ZD.JH010J

- 16** If the Duplex Unit is installed, close the Duplex Reversal Unit.

- ①** Raise the Duplex Reversal Unit slowly with both hands, and push it in until it clicks into place.



ZD.JP205J

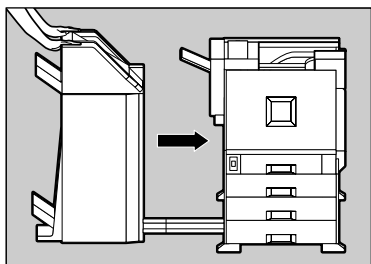
The Duplex Reversal Unit is closed.

Important

- ☐ Attach the Duplex Reversal Unit after closing the upper left cover of the printer.

- 17** If the 2 Tray Finisher was installed, reattach the 2 Tray Finisher to the printer.

- ① Use both hands to push it straight back in, and let go when it clicks into place.



The 2 Tray Finisher is reattached to the printer.

Important

- ❑ Be sure to attach the 2 Tray Finisher to the printer after closing the Duplex Reversal Unit.

- ⑩ Plug in the power cable and turn on the power switch.

The following message appears on the panel display. Please wait for a while.

Please Wait

The following message appears on the panel display, and the printer starts color registration adjustment automatically. Please wait for a while.

Calibrating...

After finishing adjustment, the following message appears.

Initializing...
Please Wait

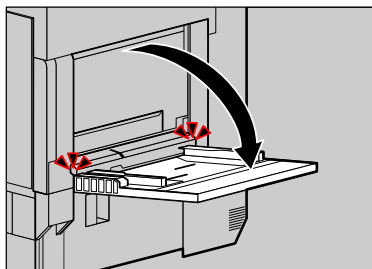
- ⑪ Confirm that the following message is displayed on the panel display, and then press [Enter].

Press # for
Fuser Adjust

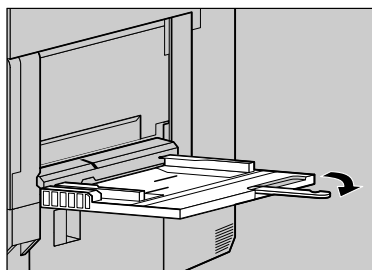
- ⑫ Confirm that the following message is displayed on the panel display, and then load the A3 paper which comes with the Fusing Unit in the Bypass Tray.

Set Sheet in
Bypass, then #

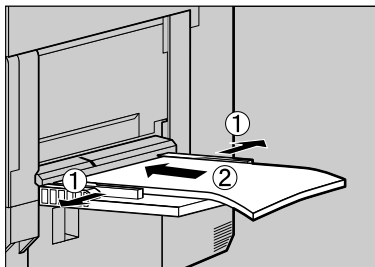
- ① Open the Bypass Tray.



- ② Pull out the Bypass Tray Extension, and then flip it open.

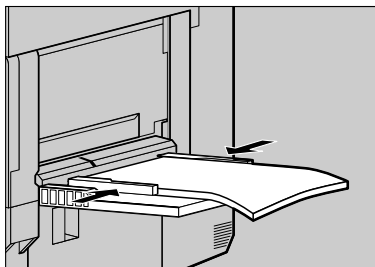


- ③ Slide the side guides outward(①), and then load paper until it stops with the print side up (②).



ZD.JH204J

- ④ Adjust the side guides to the paper width.



ZD.JH205J

Important

- ❑ Shuffle the paper before loading the stack onto the tray so multiple sheets are not fed in at one time.

- ② Confirm that the A3 paper which comes with the Fusing Unit is in the Bypass Tray, and then press **[Enter]**.

The printer prints 8 Test Sheet (A-H).

Note

- ❑ It takes about a minute to start printing.

- ② Check the test sheets and make the offset settings for A through H. Select "1" for a white square, and select "0" for a out-of-register square.

A	B	C	D	E	F	G	H
0	0	0	0	1	0	0	1

Press (▲) or (▼) to select "0" or "1" as the values for A - H. Press **[Enter]** to move to the next letter. After setting the value for "H", the printer returns to the previous menu.

Ready

Important

- ❑ If you select "0" for each alphabets or an invalid value is selected, an error message is shown, and then returns to the previous menu. In this case, press **[Enter]** to return to the ready condition, and perform the "Fuser Adjust" manually.

For details about how to adjust the color registration, see "Adjusting the Color Registration" in Maintenance Guide 1.

Invalid Value
Press #

- ❑ When "Toner is Almost Empty" appears on the panel display, replace the Toner Cartridge first, and then perform the "Auto Adjust" and "Fuser Adjust" manually.

For details about how to adjust the color registration, see "Adjusting the Color Registration" in Maintenance Guide 1.

Printed in Japan

EE (GB) GR (D) FR (F) IT (I) SP (E) SW (S)

G765-8517B