

Reissued: 30-Jul-02

Model: Model K-P2	Date: 4-Jun-02	No.: RG073001a
-------------------	----------------	----------------

## RTB Reissue

The items in bold italics have been added.

Subject: Printer Controller Firmware History		Prepared by: A. Ishiyama	
From: Technical Services sec. Service Planning Dept.			
Classification:	<input type="checkbox"/> Troubleshooting <input type="checkbox"/> Mechanical <input type="checkbox"/> Paper path <input type="checkbox"/> Other (      )	<input type="checkbox"/> Part information <input type="checkbox"/> Electrical <input type="checkbox"/> Transmit/receive	<input checked="" type="checkbox"/> Action required <input type="checkbox"/> Service manual revision <input type="checkbox"/> Retrofit information

Printer controller firmware history for the Model K-P2 (Kir-P2: G073/G074 model).

Part Number	Version	Production
<b>G0735900E</b>	<b>1.04</b>	<b>April '02 production</b>
G0735900D	1.03	March '02 production
G0735900C	1.02	February '02 production
G0735900B	1.01	First mass production

**Note:** The above firmware is being used in USA, Europe, and Asia models.

## Descriptions of the changes

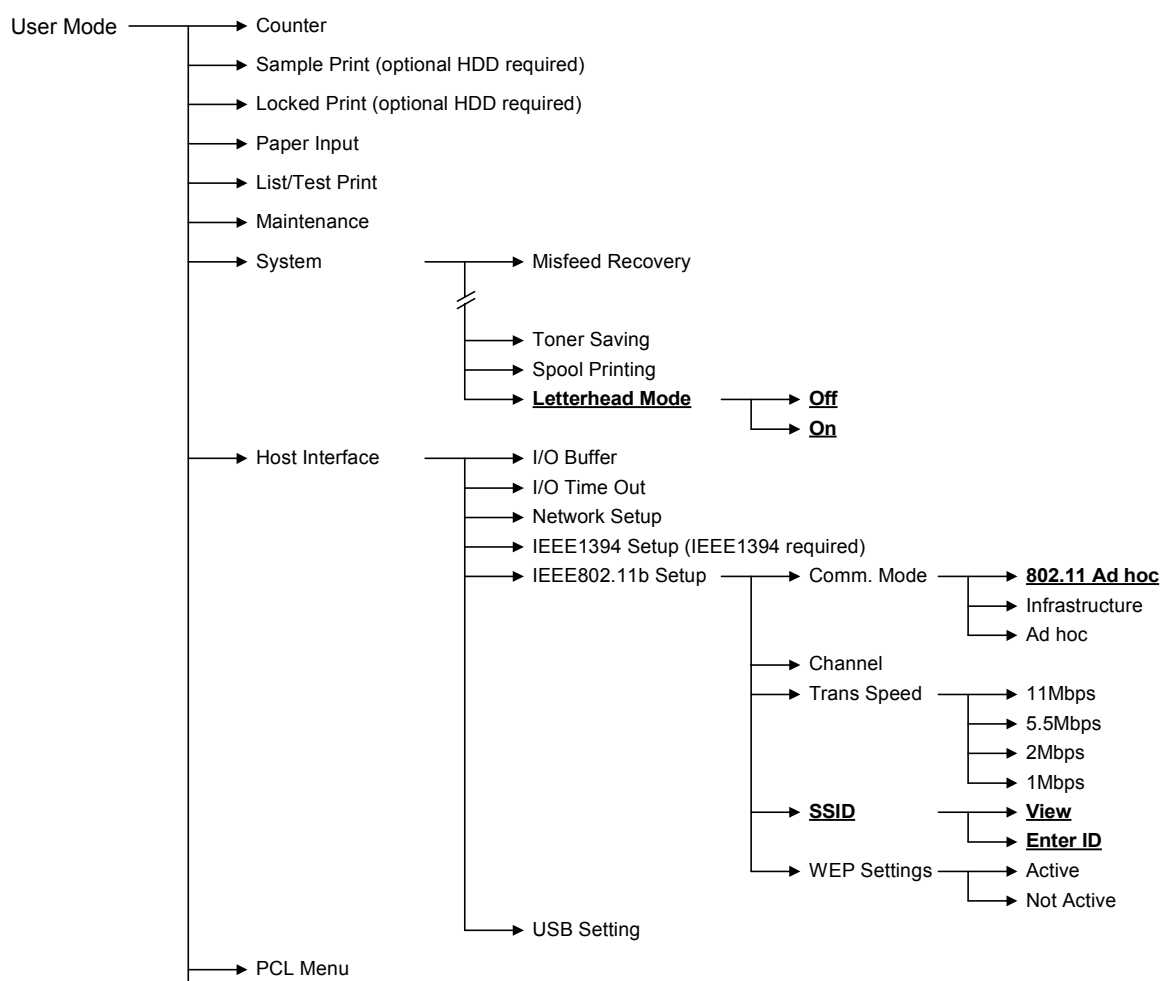
Descriptions	Version
<p><i>Firmware modified to correct the following:</i></p> <ol style="list-style-type: none"> <li><b>SNMP vulnerability</b>  <i>SNMP security vulnerabilities reported by CERT on Feb.12, 2002 have been confirmed and fixed through the PROTON c06-snmpv1 test suite.</i>            -CERT: <a href="http://www.cert.org/advisories/CA-2002-03.html">http://www.cert.org/advisories/CA-2002-03.html</a>            -PROTON c06-snmpv1 test Suite:  <a href="http://www.ee.oulu.fi/research/ouspg/protos/testing/c06/snmpv1/">http://www.ee.oulu.fi/research/ouspg/protos/testing/c06/snmpv1/</a> </li> </ol> <p><b>New features added to User Mode (see the next page for the User Mode tree):</b></p> <ol style="list-style-type: none"> <li><b>Letterhead Mode</b>  <b>On:</b> The machine feeds all pages through the duplex unit so that the last page of a job with an odd number of pages is printed onto the front side of the paper.   <b>Off (default setting):</b> The last sheet of a job with an odd number of pages is not fed through the duplex unit. Therefore, although the output time of this sheet is slightly faster, the last page is printed onto the rear side.         </li> <li><b>802.11 Ad hoc mode</b> (one type of Ad hoc mode used with wireless LAN) is supported from this version.</li> <li><b>SSID</b> (used for infrastructure mode with wireless LAN) can now be programmed from User Mode as well – previously, this was only possible using Web Status Monitor or telnet.</li> <li><b>128-bit WEP key</b> (a wireless LAN security feature) is supported from this version. Previous versions supported only 64-bit WEP.</li> </ol>	<b>1.04</b>

**Reissued: 30-Jul-02**

Model: Model K-P2	Date: 4-Jun-02	No.: RG073001a
-------------------	----------------	----------------

Descriptions	Version
Firmware modified to correct the following problem: 1. A program update error occurs when Verify mode in the firmware updating procedure is used. Please refer to RTB No. G0730002 for details. 2. The PM counter count-up method for Meter-charge mode is corrected.  Change in Specification: Symbol sets PC-858, Latin 9 and Roman 9 are added for the EURO currency symbol.	1.03
Firmware modified to correct the following problem: While downloading PS fonts to a machine with the HDD option installed, the correct PS serial number cannot be output.	1.02

## User Mode Tree



Underlined features have been added from version 1.04.

Model: Model K-P2		Date: 4-Jun-02	No.: RG073002
Subject: Problems Using "Verify" in the Firmware Update		Prepared by: A. Ishiyama	
From: Technical Services sec. Service Planning Dept.			
Classification:	<input checked="" type="checkbox"/> Troubleshooting <input type="checkbox"/> Part information <input type="checkbox"/> Action required <input type="checkbox"/> Mechanical <input type="checkbox"/> Electrical <input type="checkbox"/> Service manual revision <input type="checkbox"/> Paper path <input type="checkbox"/> Transmit/receive <input type="checkbox"/> Retrofit information <input type="checkbox"/> Other (      )		

## SYMPTOM:

When the controller firmware installed in the machine is ver1.20 or older (and different from the version in the IC card), a program update error will occur and the machine will freeze up if the version is confirmed using **Verify Mode**.

**Note:** Once this occurs, the condition cannot be cleared without the recovery procedure below.

## SOLUTION:

Do not use Verify Mode before performing the update if the version in the machine is 1.02 or older. If the machine version is unknown, this can be confirmed by printing out the configuration page.

### Note:

Normally, Verify Mode is used after the update is performed, in which case the symptom will not occur since the IC card and mainframe controller versions are the same.

## Recovery Procedure:

If the symptom does occur, please perform the following:

1. Turn off the main switch, remove the controller board from the machine and change DIP switch 2 **bit 1 to On**.
2. Reattach the controller, insert the IC card and turn on the machine. The machine automatically starts updating the firmware.
3. When the update is finished, turn off the machine and remove the controller and IC card. Then, reset DIP switch 2 **bit 1 to Off** and reattach the controller.

For the details on this procedure, please refer to the Model K-P1 Service Manual, pg. 5-15.

Model: Model K-P2		Date: 6-Aug-02	No.: RG073003
Subject: Printer Engine Firmware History		Prepared by: A. Ishiyama	
From: Technical Services sec. Service Planning Dept.			
Classification:	<input type="checkbox"/> Troubleshooting <input type="checkbox"/> Part information <input checked="" type="checkbox"/> Action required <input type="checkbox"/> Mechanical <input type="checkbox"/> Electrical <input type="checkbox"/> Service manual revision <input type="checkbox"/> Paper path <input type="checkbox"/> Transmit/receive <input type="checkbox"/> Retrofit information <input type="checkbox"/> Other (      )		

Printer engine firmware history for the Model K-P2 (G073/G074).

Part Number	Version	Production
G0765135E	1.06	July '02 production
G0765135D	1.05	First mass production

**Note:** The above firmware is being used on NA, Europe, and Asia models.

## Descriptions of the changes

Descriptions	Version
<b><i>Firmware modified to correct the following:</i></b> <ul style="list-style-type: none"> <li>The Main Scan Magnification Adjustment (SP Mode) did not function properly with the previous version.</li> </ul>	1.06

Reissued: 13-Aug-02

Model: Model K-P2	Date: 4-Jun-02	No.: RG073001b
-------------------	----------------	----------------

## RTB Update

The items in bold italics have been added.

Subject: Printer Controller Firmware History		Prepared by: A. Ishiyama	
From: Technical Services sec. Service Planning Dept.			
Classification:	<input type="checkbox"/> Troubleshooting <input type="checkbox"/> Mechanical <input type="checkbox"/> Paper path <input type="checkbox"/> Other (      )	<input type="checkbox"/> Part information <input type="checkbox"/> Electrical <input type="checkbox"/> Transmit/receive	<input checked="" type="checkbox"/> Action required <input type="checkbox"/> Service manual revision <input type="checkbox"/> Retrofit information

The following is the printer controller firmware history for the Model K-P2 (Kir-P2: G073/G074 model).

Part Number	Version	Production
<b><i>G0735900F</i></b>	<b><i>1.05</i></b>	<b><i>June '02 production</i></b>
G0735900E	1.04	April '02 production
G0735900D	1.03	March '02 production
G0735900C	1.02	February '02 production
G0735900B	1.01	First mass production

**Note:** The above firmware is being used in USA, European, and Asian models.

## Descriptions of changes

Descriptions	Version
<p><b><i>The following have been fixed:</i></b></p> <p><b><i>PCL</i></b></p> <ul style="list-style-type: none"> <li><b><i>Certain characters do not print (GFPR #RC02010008)</i></b></li> <li><b><i>Modified so that some characters in symbol sets MS Text and Windows Baltic (19L) will appear exactly as they do with HP printers.</i></b></li> <li><b><i>Modified so that PCLXL unsupported symbol (6M, 13J and 14J) sets will appear as "XL ERROR".</i></b></li> </ul> <p><b><i>Change in Specifications:</i></b></p> <ul style="list-style-type: none"> <li><b><i>If the machine has no HDD option, the PCL HDD Directory List ( and font source) will not be printed on the PCL Configuration Page.</i></b></li> <li><b><i>Supports the Status Readback function of PCL5e.</i></b></li> <li><b><i>If an SSID is not entered, the message "SSID not entered" will appear on the control panel for 3 seconds.</i></b></li> <li><b><i>Supports PCLXL Euro symbol sets (PC-858, Latin 9, and Roman 9).</i></b></li> </ul>	<b><i>1.05</i></b>

Model: Model K-P2		Date: 11-Nov-02	No.: RG073004
Subject: New Wireless LAN Option (IEEE802.11b)		Prepared by: A. Ishiyama	
From: Technical Services sec. Service Planning Dept.			
Classification:	<input type="checkbox"/> Troubleshooting <input type="checkbox"/> Mechanical <input type="checkbox"/> Paper path <input type="checkbox"/> Other (       )	<input type="checkbox"/> Part information <input type="checkbox"/> Electrical <input type="checkbox"/> Transmit/receive	<input checked="" type="checkbox"/> Action required <input type="checkbox"/> Service manual revision <input type="checkbox"/> Retrofit information

This RTB has been issued to announce the necessary action for when installing the new Wireless LAN option planned for Feb '03 (802.11b Interface Unit Type A: G373-17/EDP 402001, G373-27/EDP 402002) on the current product.

## Action Required

The IC chip on the new wireless LAN option has been changed (old chip discontinued), making it necessary to update the controller firmware to v1.07 (G0735900G) or newer when installing the new wireless LAN option on machines. This is because there is no interchangeability between the new option and previous controller firmware versions.

Since the interchangeability is X/O, controller firmware v1.07 or newer will work with either the current or new wireless LAN options. Also, v1.07 has been applied to the production line from October '02 (see RTB #RG073001c).

## Note:

1. Both wireless LAN options are compatible with all versions of engine firmware.
2. If the new wireless LAN option is installed on a machine with controller firmware older than v1.07, the following will be displayed on the LCD:

Hardware Problem  
IEEE 802.11b

Model: Model K-P2		Date: 11-Nov-02	No.: RG073005
Subject: Additional SC Codes		Prepared by: A. Ishiyama	
From: Technical Services sec. Service Planning Dept.			
Classification:	<input type="checkbox"/> Troubleshooting <input type="checkbox"/> Part information <input type="checkbox"/> Action required <input type="checkbox"/> Mechanical <input type="checkbox"/> Electrical <input checked="" type="checkbox"/> Service manual revision <input type="checkbox"/> Paper path <input type="checkbox"/> Transmit/receive <input type="checkbox"/> Retrofit information <input type="checkbox"/> Other (      )		

Please add the following information to your Service Manuals.

Additional SC Code		Symptom	Possible Cause
819	B	Kernel abnormal end error	HDD error
		A HDD error or a software error has occurred, terminating the SCS process, gwinit process, and finally the kernel program. A system process has used up all the RAM.	Software application error RAM shortage
998	B	Application Start Error	Software defective.
		After power on, the application does not start within 60s. (All applications neither start nor end normally.)	An option required by the application (RAM, DIMM, board) is not installed.

Model: General RTB		Date: 8-Nov-02	No.: RGene011
Subject: Euro symbol not printed with PS driver		Prepared by: T. Itoh	
From: Technical Services sec. Service Planning Dept.			
Classification:	<input checked="" type="checkbox"/> Troubleshooting <input type="checkbox"/> Mechanical <input type="checkbox"/> Paper path <input type="checkbox"/> Other (      )	<input type="checkbox"/> Part information <input type="checkbox"/> Electrical <input type="checkbox"/> Transmit/receive	<input checked="" type="checkbox"/> Action required <input type="checkbox"/> Service manual revision <input type="checkbox"/> Retrofit information

## SYMPTOM

When printing with the PS driver, the Euro currency symbol is not printed out with 112 of 136 fonts, which are stored in the font ROM in GW-based products.

The following are GW-based products:

Model-K3, Model-K P2, Russian-C2, Adonis- C2, Model-A P3, Model-J P1b, Model-J CF  
Model-U P1, Model-U C1, Martini-C1.

## CAUSE

The Euro currency symbol was not included in the font ROM.

## SOLUTION

### Temporary Solution (1)

A workaround for each operating system has been previously released on the FAQ page, and is included on pp. 5-8 below.

### Temporary Solution (2)

Although the font ROM will be modified as a permanent solution (details below), before this can be applied, the controller firmware has been modified on the following GW-based products:

Product	Firmware Version	Product	Firmware Version
Model-K3	1.01 (Controller)	Model-J P1b	2.18 (Controller)
Model-K P2	1.06.1 (Controller)	Model-J CF	1.11 (Printer Application)
Russian-C2	2.03 (Printer Application)	Model-U P1	2.20 (Printer Application)
Adonis-C2	3.09 (Printer Application)	Model-U C1	1.22 (Printer Application)
Model-A P3	1.08 (Controller)	Martini-C1	1.01 (Printer Application)

Specifically, the Euro currency symbol has been added along with the “PS fonts download” feature, which allows the symbol to be downloaded to machine RAM. Enable this feature by changing the setting of Bit SW#3-0 to “1 (ON)” in SP mode (default: OFF).

Model: General RTB

Date: 8-Nov-02

No.: RGene011

**Remarks for Temporary Solution 2:**

1. Switching PDL to PS takes approximate 7 to 10 seconds.

When PS fonts download is enabled, the Euro symbol is temporarily downloaded to the machine RAM at the first PS printing job, and whenever the PDL is switched from RPCS or PCL to PS. The total download time is approximately 7 to 10 seconds. This is because once the data is downloaded, it will remain in the RAM until the PDL is switched or the power turned off.

2. Printing high image area documents at 1200 dpi may cause a memory overflow error in machines equipped only with 32MB of memory (ex. Model-K P2).

This is because the PS fonts download feature uses approximately 800kB, which can bring the amount of available memory close to capacity with the above printing conditions.

Workaround:

- Printing at 600dpi may prevent an overflow, even with just the 32MB memory installed.
- Changing the memory usage setting from “Frame Priority” to “Font Priority” may prevent an overflow.

**Permanent Solution**

Modification of the font ROM on the ROM DIMM or the Controller Board, from October '02, production or later (details differ depending on the model). Specifically, the Euro currency symbol has been added to the 112 fonts mentioned above.

**Note:**

1. When the new ROM DIMM or Controller Board is installed, it is not necessary to disable the PS fonts download feature (temporary solution).
2. An MB will be issued separately announcing the P/N change for the ROMM DIMM and Controller Boards, and cut-in serial number.

ROM DIMM and Controller Board P/N:

Model	Where the font ROM is soldered	Current P/N	Model	Where the font ROM is soldered	Current P/N
Model-K P2	Controller	G0735712	Model-J CF	ROM DIMM	G5706687
		G0745712	Model-U P1	ROM DIMM	G0705851
Adonis-C2	ROM DIMM	B3615117	Model-U C1	ROM DIMM	B5295117
		B3625118			B4635117
Model-A P3	Controller	G0656022	Martini-C1	ROM DIMM	G3395117
		G0656023			G3385117
Russian-C2	ROM DIMM	B4615117	Model-K3	Controller	B5165750
		B4535117			
Model-J P1b	ROM DIMM	G0776120			

Model: General RTB

Date: 8-Nov-02

No.: RGene011

## Font Table

	Euro symbol is printed correctly.
	This is a symbol font, so no countermeasure is applied.
	Both temporary and permanent solutions work to print out the Euro currency symbol correctly.

AlbertusMT	Helvetica	Univers
AlbertusMT-Italic	Helvetica-Bold	Univers-Bold
AlbertusMT-Light	Helvetica-BoldOblique	Univers-BoldExt
AntiqueOlive-Bold	Helvetica-Condensed	Univers-BoldExtObl
AntiqueOlive-Compact	Helvetica-Condensed-Bold	Univers-BoldOblique
AntiqueOlive-Italic	Helvetica-Condensed-BoldObl	Univers-Condensed
AntiqueOlive-Roman	Helvetica-Condensed-Oblique	Univers-CondensedBold
Apple-Chancery	Helvetica-Narrow	Univers-CondensedBoldOblique
Arial-BoldItalicMT	Helvetica-Narrow-Bold	Univers-CondensedOblique
Arial-BoldMT	Helvetica-Narrow-BoldOblique	Univers-Extended
Arial-ItalicMT	Helvetica-Narrow-Oblique	Univers-ExtendedObl
ArialMT	Helvetica-Oblique	Univers-Light
AvantGarde-Book	HoeflerText-Black	Univers-LightOblique
AvantGarde-BookOblique	HoeflerText-BlackItalic	Univers-Oblique
AvantGarde-Demi	HoeflerText-Italic	Wingdings-Regular
AvantGarde-DemiOblique	HoeflerText-Ornaments	ZapfChancery-MediumItalic
Bodoni	HoeflerText-Regular	ZapfDingbats
Bodoni-Bold	JoannaMT	
Bodoni-BoldItalic	JoannaMT-Bold	
Bodoni-Italic	JoannaMT-BoldItalic	
Bodoni-Poster	JoannaMT-Italic	
Bodoni-PosterCompressed	LetterGothic	
Bookman-Demi	LetterGothic-Bold	
Bookman-DemiItalic	LetterGothic-BoldSlanted	
Bookman-Light	LetterGothic-Slanted	
Bookman-LightItalic	LubalinGraph-Book	
Carta	LubalinGraph-BookOblique	
Chicago	LubalinGraph-Demi	
Clarendon	LubalinGraph-DemiOblique	
Clarendon-Bold	Marigold	
Clarendon-Light	MonaLisa-Recut	
CooperBlack	Monaco	
CooperBlack-Italic	NewCenturySchlbk-Bold	
Copperplate-ThirtyThreeBC	NewCenturySchlbk-BoldItalic	
Copperplate-ThirtyTwoBC	NewCenturySchlbk-Italic	
Coronet-Regular	NewCenturySchlbk-Roman	
Courier	NewYork	
Courier-Bold	Optima	
Courier-BoldOblique	Optima-Bold	
Courier-Oblique	Optima-BoldItalic	
Eurostile	Optima-Italic	
Eurostile-Bold	Oxford	
Eurostile-BoldExtendedTwo	Palatino-Bold	
Eurostile-ExtendedTwo	Palatino-BoldItalic	

Model: General RTB	Date: 8-Nov-02	No.: RGene011
--------------------	----------------	---------------

Geneva	Palatino-Italic
GillSans	Palatino-Roman
GillSans-Bold	StempelGaramond-Bold
GillSans-BoldCondensed	StempelGaramond-BoldItalic
GillSans-BoldItalic	StempelGaramond-Italic
GillSans-Condensed	StempelGaramond-Roman
GillSans-ExtraBold	Symbol
GillSans-Italic	Tekton
GillSans-Light	Times-Bold
GillSans-LightItalic	Times-BoldItalic
Goudy	Times-Italic
Goudy-Bold	Times-Roman
Goudy-BoldItalic	TimesNewRomanPS-BoldItalicMT
Goudy-ExtraBold	TimesNewRomanPS-BoldMT
Goudy-Italic	TimesNewRomanPS-ItalicMT
	TimesNewRomanPSMT

## Workaround Announced on the FAQ Page

### Question:

Euro Fonts printing problem

### Answer:

If Euro Fonts can't be printed by the PS driver, the following solutions may be effective.

### Solution

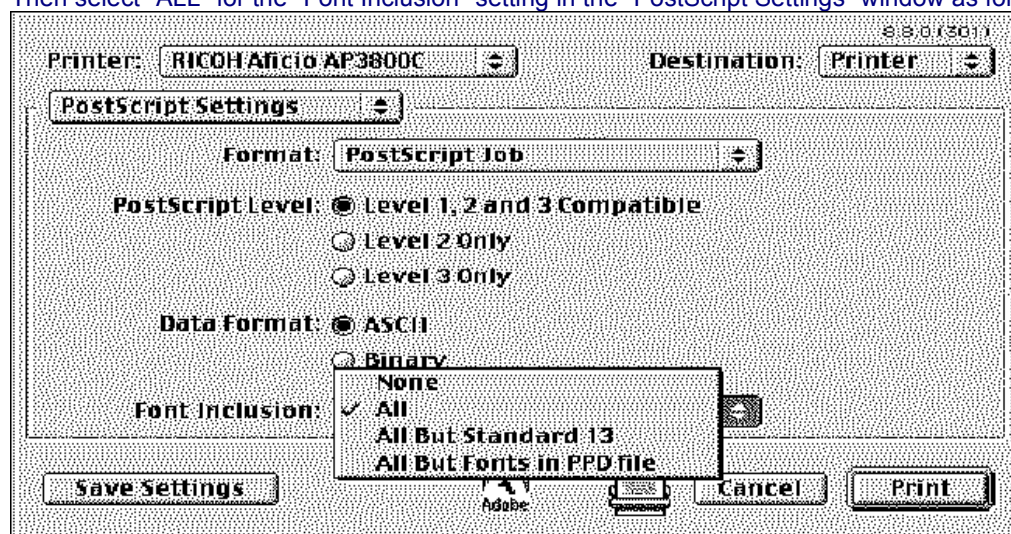
MacOS 9.x / 8.x

Use the AdobePS 8.8 printer driver.

Get the printer driver from the Adobe site on the web.

<http://www.adobe.com/support/downloads/product.jsp?product=44&platform=Macintosh>

Then select "ALL" for the "Font Inclusion" setting in the "PostScript Settings" window as follows.



### Windows 95

Update Windows95 to "Euro Currency Support for Windows95".

You can get it from the following URL.

[http://www.microsoft.com/windows95/downloads/contents/WURecommended/S\\_WUFeatured/W95EuroPatch/Default.asp](http://www.microsoft.com/windows95/downloads/contents/WURecommended/S_WUFeatured/W95EuroPatch/Default.asp)

Then the "Add Euro Currency Symbol to PostScript Fonts" check box is available.

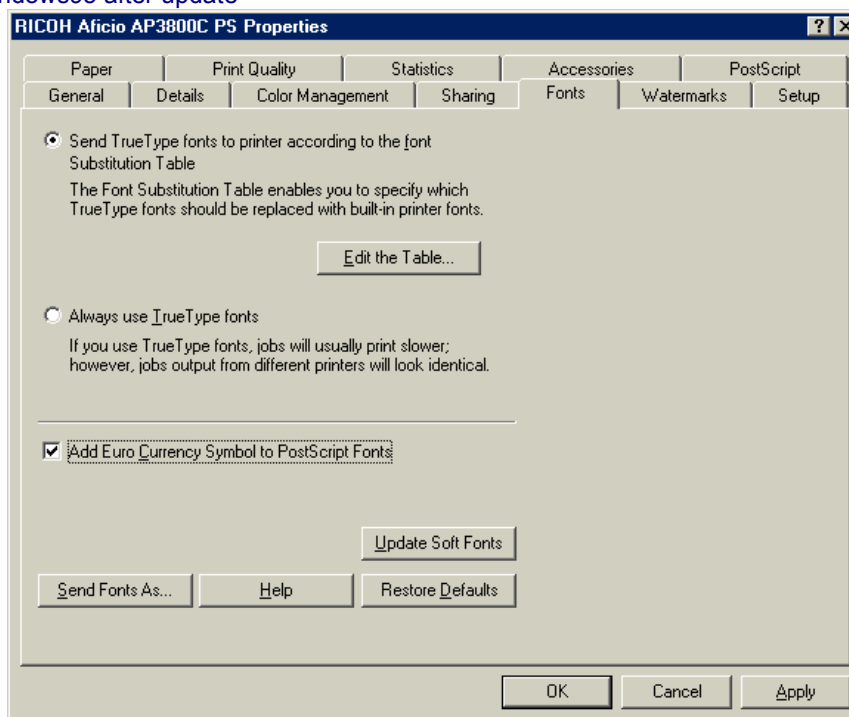
Check "Add Euro Currency Symbol to PostScript Fonts". (Before update, the check box doesn't work. )

Model: General RTB

Date: 8-Nov-02

No.: RGene011

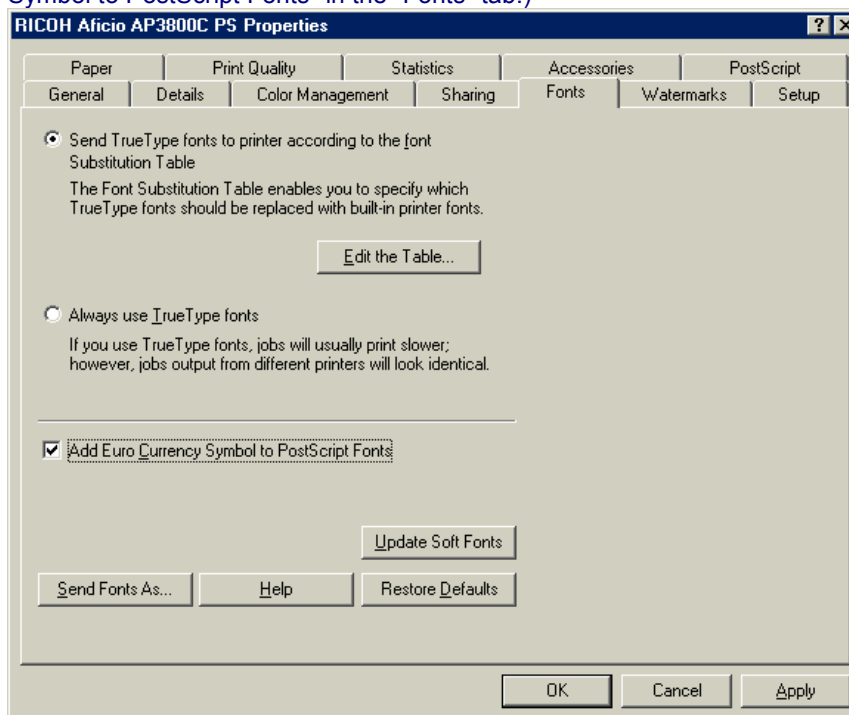
## Windows95 after update



## Windows 98 / ME / NT4.0 / XP

Check "Add Euro Currency Symbol to PostScript Fonts" .

Windows 98 / ME (Note: The AdobePS driver version 4.3.1 or later has "Add Euro Currency Symbol to PostScript Fonts" in the "Fonts" tab.)

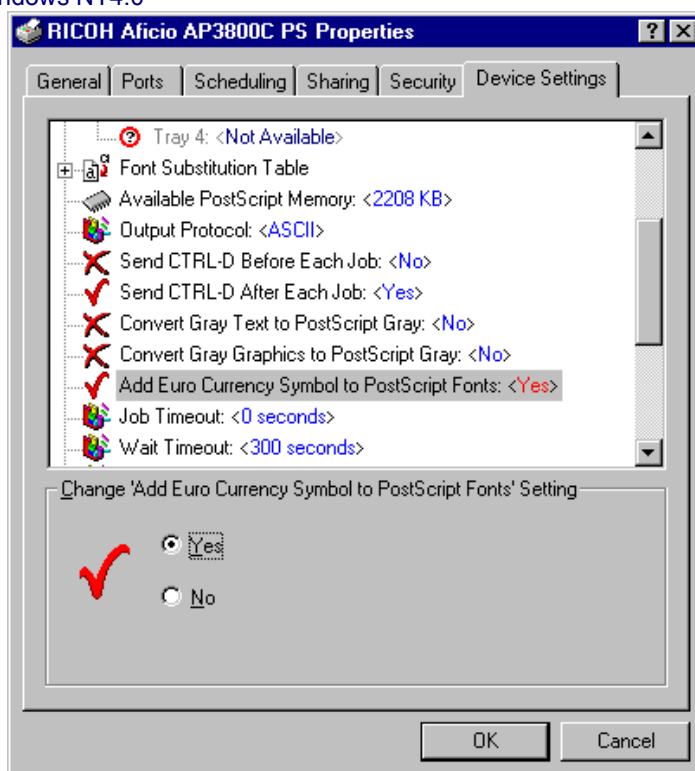


Model: General RTB

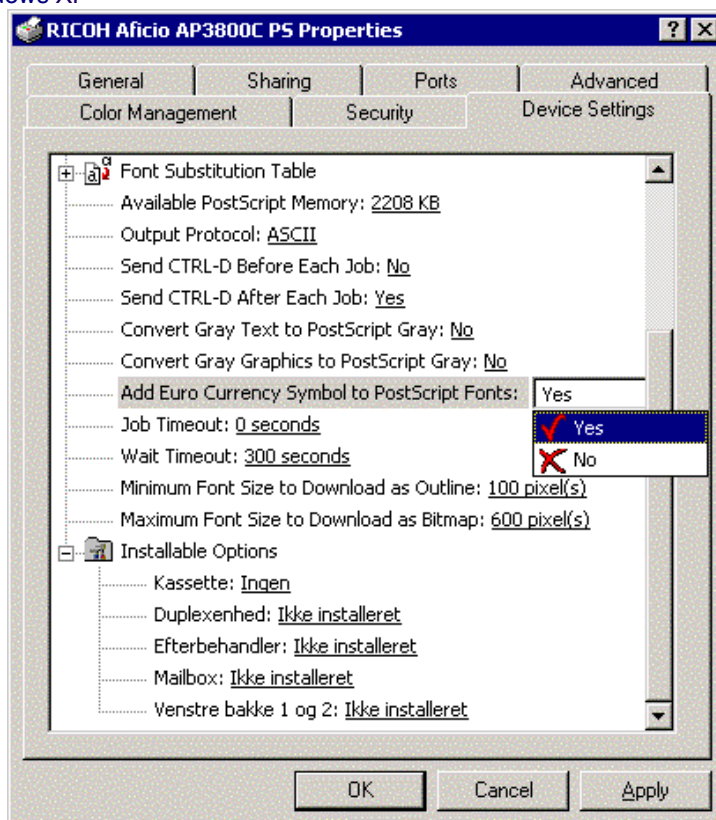
Date: 8-Nov-02

No.: RGene011

## Windows NT4.0



## Windows XP



Model: General RTB

Date: 8-Nov-02

No.: RGene011

## Windows 2000

Update the printer driver to v5.5.2 or later.

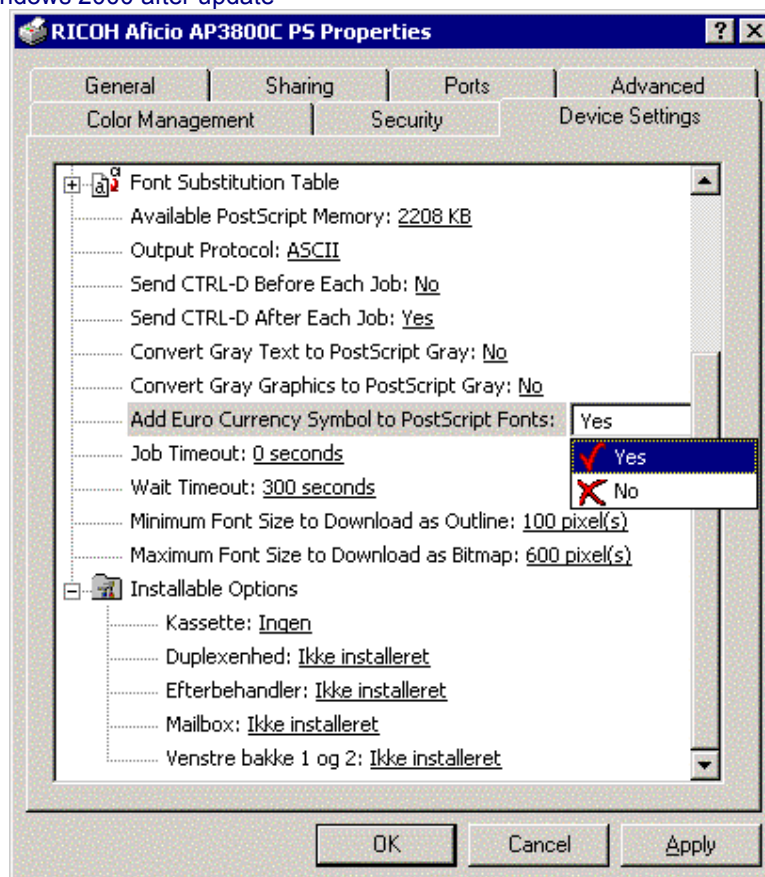
You can get it from the printer driver v1.0.6 on the Adobe web site that includes the W2000 driver v 5.5.2.

<http://www.adobe.com/support/downloads/product.jsp?product=44&platform=Windows>

Then the "Add Euro Currency Symbol to PostScript Fonts" check box is displayed.

Check "Add Euro Currency Symbol to PostScript Fonts".

## Windows 2000 after update



Reissued: 20-Dec-02

Model: Model K-P2	Date: 4-Jun-02	No.: RG073001c
-------------------	----------------	----------------

## RTB Update

The items in bold italics have been added.

Subject: Printer Controller Firmware History		Prepared by: A. Ishiyama	
From: Technical Services sec. Service Planning Dept.			
Classification:	<input type="checkbox"/> Troubleshooting <input type="checkbox"/> Mechanical <input type="checkbox"/> Paper path <input type="checkbox"/> Other (       )	<input type="checkbox"/> Part information <input type="checkbox"/> Electrical <input type="checkbox"/> Transmit/receive	<input checked="" type="checkbox"/> Action required <input type="checkbox"/> Service manual revision <input type="checkbox"/> Retrofit information

The following is the printer controller firmware history for the Model K-P2 (Kir-P2: G073/G074 model).

Part Number	Version	Production
<b><i>G0735900G</i></b>	<b><i>1.07</i></b>	<b><i>October '02 production</i></b>
G0735900F	1.05	June '02 production
G0735900E	1.04	April '02 production
G0735900D	1.03	March '02 production
G0735900C	1.02	February '02 production
G0735900B	1.01	First mass production

**Note:** The above firmware is being used in USA, European, and Asian models.

***The firmware version 1.06 has been skipped, and therefore, it will not be released.***

Reissued: 20-Dec-02

Model: Model K-P2	Date: 4-Jun-02	No.: RG073001c
-------------------	----------------	----------------

## Descriptions of changes

Descriptions	Version
<p><b>Firmware modified to correct the following:</b></p> <ol style="list-style-type: none"> <li><b>Polish wording error:</b> Incorrect: <i>Diskonaly</i> Correct: <i>Dostateczny</i></li> <li><b>German wording error:</b> Incorrect: <i>WEP Einstelling</i> Correct: <i>WEP Einstellung</i></li> <li><b>Changed the default setting of DHCP to ON.</b> <b>NOTE:</b> There is no change when updating the firmware. This feature is for the factory default.</li> <li><b>Support the new device type of wireless LAN (IEEE802.11b).</b> Please refer to RTB #RG073004 for details which will be issued soon.</li> <li><b>HTTP and telnet protocols can be opened/closed using telnet.</b> <b>NOTE:</b> After making the setting to disable HTTP, you cannot access the target device through a web browser. If you want to change this setting, please use telnet to open HTTP. When the telnet port is disabled, you have to clear the network settings (Memory Clear for NCS) to open the telnet port.</li> <li><b>The following has been fixed;</b> <b>PCL</b> <ul style="list-style-type: none"> <li>The Euro font does not print correctly.</li> <li>Line Spacing Command, "lochEsc&amp;l#D"loch, causes incorrect output (GFPR#RC02050002)</li> <li>Same line widths when BitSW #3-3 is ON in CAD printing (GFPR#RE02050016)</li> <li>Some True Type fonts might not be bolded.</li> <li>Slow Printing from AutoCAD (GFPR#RC02070001)</li> <li>When using a bold font, lines may be printed on blank parts of the page.</li> </ul> </li> </ol> <p><b>PS3</b></p> <ul style="list-style-type: none"> <li>The printing speed of a PS job slows down after a PS3 job is reset.</li> <li>PS print file is printed as text (GFPR#RE02040013)</li> <li>Lines may be printed on the blank parts of a page.</li> <li>The printer controller locks-up when printing from Unix Acrobat.</li> <li>The Euro symbol is not printed when using the PS driver. (GFPR#RC02040005) Please refer to RTB #RGENE011 for how to resolve this issue.</li> </ul>	1.07

Reissued: 20-Dec-02

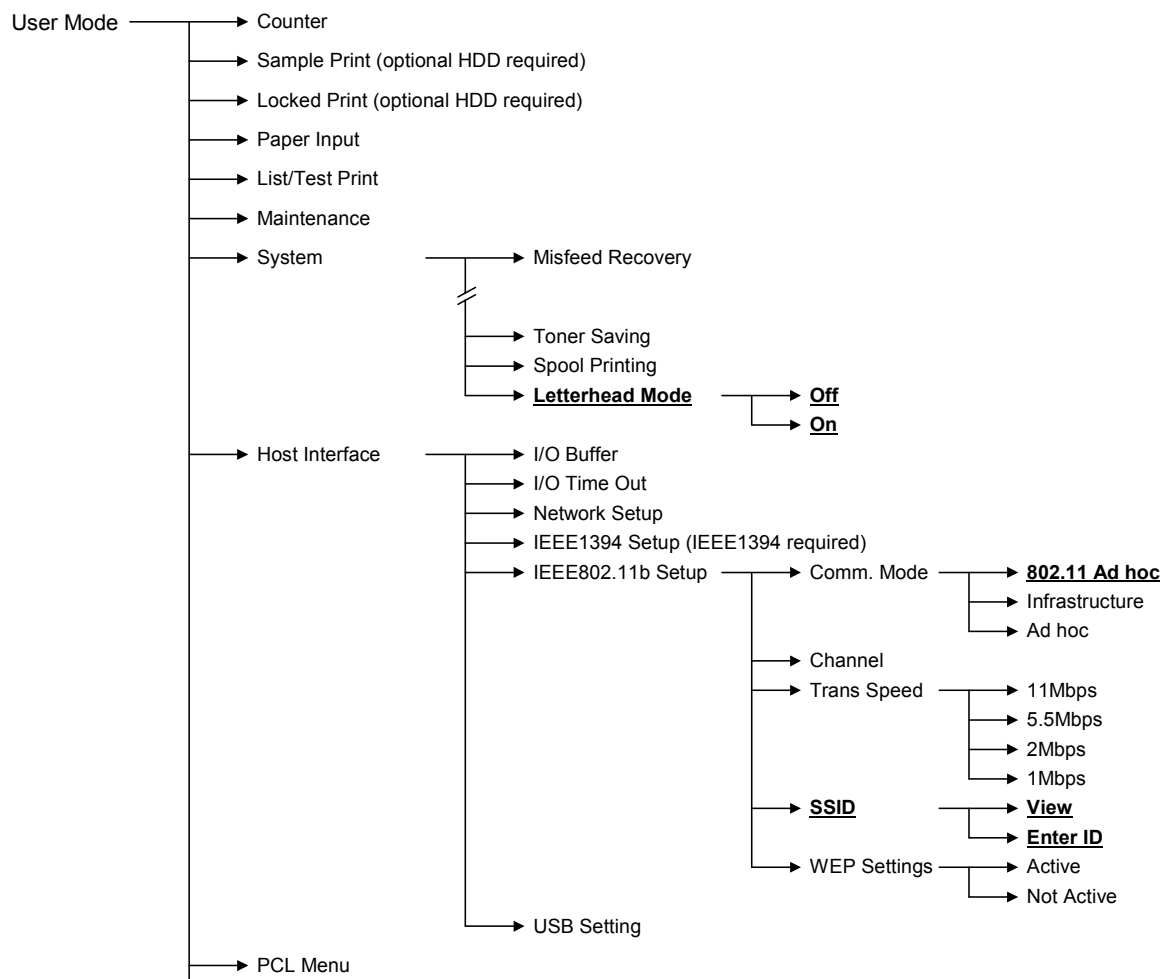
Model: Model K-P2	Date: 4-Jun-02	No.: RG073001c
Descriptions		Version
<p>The following have been fixed:</p> <p>PCL</p> <ul style="list-style-type: none"> <li>• Certain characters do not print (GFPR #RC02010008)</li> <li>• Modified so that some characters in symbol sets MS Text and Windows Baltic (19L) will appear exactly as they do with HP printers.</li> <li>• Modified so that PCLXL unsupported symbol (6M, 13J and 14J) sets will appear as "XL ERROR".</li> </ul> <p>Change in Specification:</p> <ul style="list-style-type: none"> <li>• If the machine has no HDD option, the PCL HDD Directory List ( and font source) will not be printed on the PCL Configuration Page.</li> <li>• Supports the Status Readback function of the PCL5e.</li> <li>• If SSID is not entered, the message "SSID not entered" will display on the control panel for 3 seconds.</li> <li>• Supports PCLXL Euro symbol sets (PC-858, Latin 9, and Roman 9).</li> </ul>		1.05
<p>Firmware modified to correct the following:</p> <ol style="list-style-type: none"> <li>1. <b>SNMP vulnerability</b> SNMP security vulnerabilities reported by CERT on Feb.12, 2002 have been confirmed and fixed through the PROTOS c06-snmpv1 test suite. -CERT: <a href="http://www.cert.org/advisories/CA-2002-03.html">http://www.cert.org/advisories/CA-2002-03.html</a> -PROTOS c06-snmpv1 test Suite: <a href="http://www.ee.oulu.fi/research/ouspg/protos/testing/c06/snmpv1/">http://www.ee.oulu.fi/research/ouspg/protos/testing/c06/snmpv1/</a></li> </ol>		
<p><b>New features added to User Mode (see next page for User Mode tree):</b></p> <ol style="list-style-type: none"> <li>1. <b>Letterhead Mode</b> <b>On:</b> The machine feeds all pages through the duplex unit so that the last page of an odd-paged job is printed onto the front side of the paper.  <b>Off</b> (default setting): The last sheet of an odd-paged job is not fed through the duplex unit, therefore although the output time of this sheet is slightly faster, the last page is printed onto the rear side.</li> <li>2. <b>802.11 Ad hoc mode</b> (one type of Ad hoc mode used with wireless LAN) is supported from this version.</li> <li>3. <b>SSID</b> (used for infrastructure mode with wireless LAN) can now also be programmed from User Mode. Previously, this was only possible using Web Status Monitor or telnet.</li> <li>4. <b>128-bit WEP key</b> (a wireless LAN security feature) is supported from this version. Previous versions supported only 64-bit WEP.</li> </ol>		1.04
<p>Firmware modified to correct the following problem:</p> <ol style="list-style-type: none"> <li>1. Program update error occurs when Verify mode in the firmware updating procedure is used. Please refer to the RTB No. G0730002 for details.</li> <li>2. PM counter count-up method for Meter-charge mode is corrected.</li> </ol> <p>Change in Specification: Symbol sets PC-858, Latin 9 and Roman 9 have been added for EURO currency symbol.</p>		1.03

Reissued: 20-Dec-02

Model: Model K-P2	Date: 4-Jun-02	No.: RG073001c
Descriptions		Version
Firmware modified to correct the following problem: While downloading PS fonts to a machine with the HDD option installed, the correct PS serial number cannot be output.		1.02

## User Mode Tree

Underlined features have been added from version 1.04.



Model: General RTB		Date: 27-Dec-02	No.: RGene012
Subject: GW Products - Hardware Ethernet Problem		Prepared by: T. Itoh	
From: Technical Services Sec. Service Planning Dept.			
Classification:	<input checked="" type="checkbox"/> Troubleshooting <input type="checkbox"/> Part information <input type="checkbox"/> Action required <input type="checkbox"/> Mechanical <input type="checkbox"/> Electrical <input type="checkbox"/> Service manual revision <input type="checkbox"/> Paper path <input type="checkbox"/> Transmit/receive <input type="checkbox"/> Retrofit information <input type="checkbox"/> Other (      )		

## SYMPTOM

When the main switch is turned on, the error message "Hardware Ethernet Problem" may be displayed under the following condition on the GW-based products.

Conditions:

- Network speed on the hub has been set to 100Mbps fixed with full duplex, and
- Length of network cable is too long (60 m or more) or the cable quality is not good enough

## CAUSE

When the main switch is turned on, the machine performs a loop-back test. If the cable length is too long or its quality is not good enough, the damping factor for the data transmission becomes worse, and the machine incorrectly detects an error during this test. This happens only when the network speed is set to 100Mbps fixed with full duplex. The PHY chip used on the controller board causes this.

## SOLUTION

- Temporary Solution -

- Set the network speed on the hub to Auto-sensing,
- Use a shorter cable or a cable with a lower damping factor, or
- Disconnect the network cable and power on the printer; then, set the cable after the printer comes to the ready condition.

- Permanent Solution -

The controller firmware will be modified to avoid the incorrect detection of this error message. The schedule of firmware modification is as follows.

Product Type	Product	Firmware Modification Cut-in Schedule
Fax	Kaiser 3	at next modification
Printer	Model-K P1	
	Model-K P2	
	Model-J P1b	
	Model-J CF	
	Model-U P1e	'03 January production run
	Model-A P3	'03 March production run
MFP	Model-R C2	at next modification run
	Model-A C2	
	Model-M C1	
	Model-U C1	'03 February production run

### NOTE:

Firmware will be posted in the usual manner when it is released.

Reissued: 7-Jan-03

Model: Model K-P2	Date: 4-Jun-02	No.: RG073001d
-------------------	----------------	----------------

## RTB Update

The items in bold italics have been added.

Subject: Printer Controller Firmware History		Prepared by: A. Ishiyama	
From: Technical Services sec. Service Planning Dept.			
Classification:	<input type="checkbox"/> Troubleshooting <input type="checkbox"/> Mechanical <input type="checkbox"/> Paper path <input type="checkbox"/> Other (       )	<input type="checkbox"/> Part information <input type="checkbox"/> Electrical <input type="checkbox"/> Transmit/receive	<input checked="" type="checkbox"/> Action required <input type="checkbox"/> Service manual revision <input type="checkbox"/> Retrofit information

The following is the printer controller firmware history for the Model K-P2 (Kir-P2: G073/G074 model).

Part Number	Version	Production
<b><i>G0735900H</i></b>	<b><i>1.08</i></b>	<b><i>December '02 production</i></b>
G0735900G	1.07	October '02 production
G0735900F	1.05	June '02 production
G0735900E	1.04	April '02 production
G0735900D	1.03	March '02 production
G0735900C	1.02	February '02 production
G0735900B	1.01	First mass production

**Note:** The above firmware is being used in USA, European, and Asian models.  
The firmware version 1.06 has been skipped, and therefore, it will not be released.

## Descriptions of changes

Descriptions	Version
<b><i>Firmware modified to correct the following:</i></b> <ol style="list-style-type: none"> <li><b><i>The Form Lines value (under PCL Menu) changes after rebooting the machine. (GFPR# RA02090003)</i></b></li> <li><b><i>Response to the PJI INFO CONFIG command does not include the serial number.</i></b></li> <li><b><i>The print job may stop during processing of the file when using "INFICO". (GFPR# RE02090012)</i></b></li> <li><b><i>Wrong suffix of the firmware printed on the Configuration Page</i></b></li> </ol>	<b><i>1.08</i></b>

Reissued: 7-Jan-03

Model: Model K-P2	Date: 4-Jun-02	No.: RG073001d
Descriptions		Version
<p>Firmware modified to correct the following:</p> <ol style="list-style-type: none"> <li>Polish wording error: Incorrect: Diskonaly Correct: Dostateczny</li> <li>German wording error: Incorrect: WEP Einstelling Correct: WEP Einstellung</li> <li>Changed the default setting of DHCP to ON. NOTE: There is no change when updating the firmware. This feature is for the factory default.</li> <li>Support the new device type of wireless LAN (IEEE802.11b). Please refer to RTB #RG073004 for details which will be issued soon.</li> <li>HTTP and telnet protocols can be opened/closed using telnet. NOTE: After making the setting to disable HTTP, you cannot access the target device through web browser. If you want to change this settings, please use telnet to open HTTP. When telnet port is disabled, you have to clear the network settings (Memory Clear for NCS) to open the telnet port.</li> <li>The following has been fixed; PCL <ul style="list-style-type: none"> <li>Euro font does not print correctly.</li> <li>Line Spacing Command, "lochEsc&amp;l#D"loch, causes incorrect output (GFPR#RC02050002)</li> <li>Same line widths when BitSW #3-3 is ON in CAD printing (GFPR#RE02050016)</li> <li>Some True Type font might not be bolded.</li> <li>Slow Printing from AutoCAD (GFPR#RC02070001)</li> <li>When using bold font, lines may be printed on the blank of page.</li> </ul> PS3 <ul style="list-style-type: none"> <li>The printing speed of a PS job slows down after a PS3 job is reset.</li> <li>PS print file is printed as text (GFPR#RE02040013)</li> <li>Lines may be printed on the blank of page.</li> <li>The printer controller locks-up when printing from Unix Acrobat.</li> <li>Euro symbol is not printed when using PS driver. (GFPR#RC02040005) Please refer to RTB #RGENE011 which will be issued soon, for the procedure of how to fix this issue.</li> </ul> </li> </ol>		1.07

Reissued: 7-Jan-03

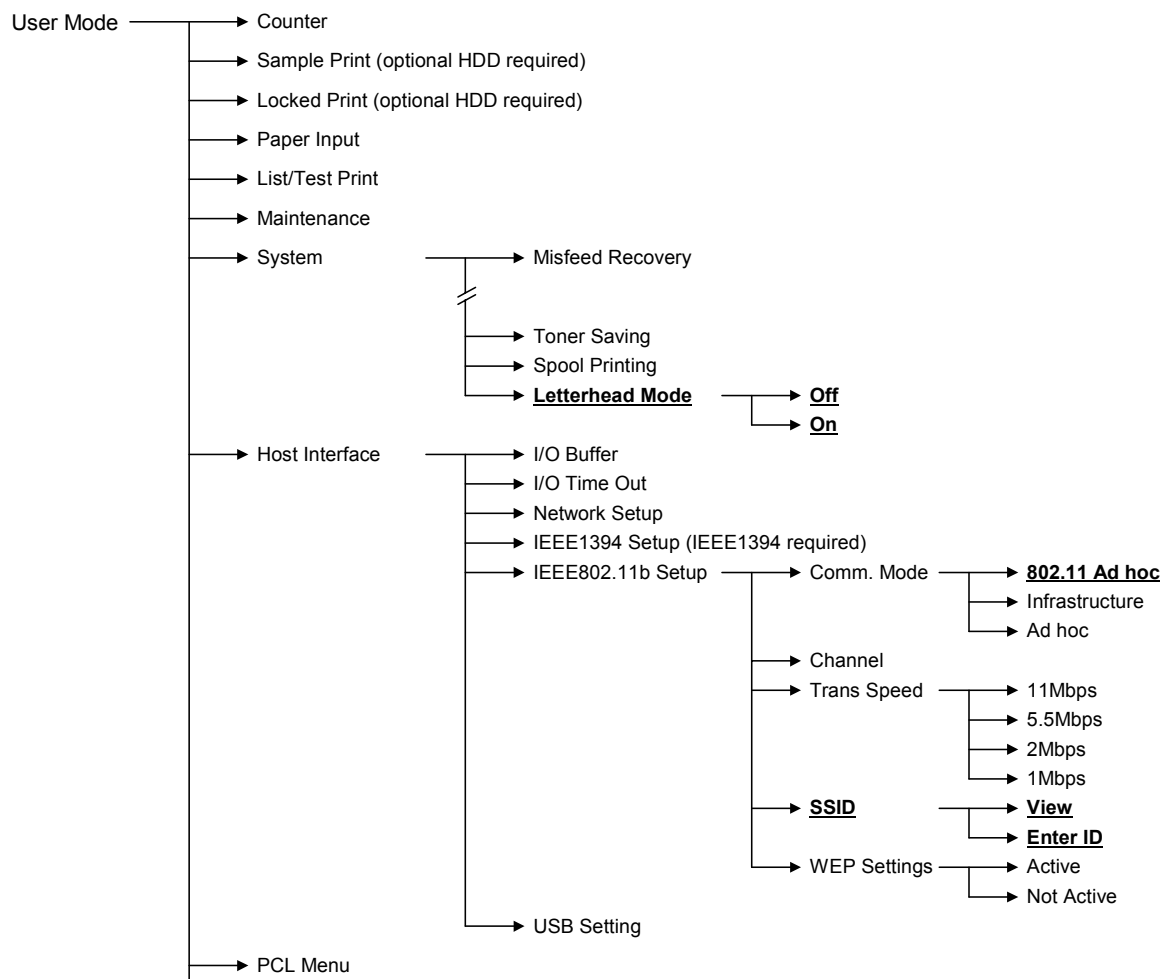
Model: Model K-P2	Date: 4-Jun-02	No.: RG073001d
Descriptions		Version
<p>The following have been fixed:</p> <p>PCL</p> <ul style="list-style-type: none"> <li>• Certain characters do not print (GFPR #RC02010008)</li> <li>• Modified so that some characters in symbol sets MS Text and Windows Baltic (19L) will appear exactly as they do with HP printers.</li> <li>• Modified so that PCLXL unsupported symbol (6M, 13J and 14J) sets will appear as "XL ERROR".</li> </ul> <p>Change in Specification:</p> <ul style="list-style-type: none"> <li>• If the machine has no HDD option, the PCL HDD Directory List ( and font source) will not be printed on the PCL Configuration Page.</li> <li>• Supports the Status Readback function of the PCL5e.</li> <li>• If SSID is not entered, the message "SSID not entered" will display on the control panel for 3 seconds.</li> <li>• Supports PCLXL Euro symbol sets (PC-858, Latin 9, and Roman 9).</li> </ul>		1.05
<p>Firmware modified to correct the following:</p> <ol style="list-style-type: none"> <li>1. <b>SNMP vulnerability</b> SNMP security vulnerabilities reported by CERT on Feb.12, 2002 have been confirmed and fixed through the PROTOS c06-snmpv1 test suite. -CERT: <a href="http://www.cert.org/advisories/CA-2002-03.html">http://www.cert.org/advisories/CA-2002-03.html</a> -PROTOS c06-snmpv1 test Suite: <a href="http://www.ee.oulu.fi/research/ouspg/protos/testing/c06/snmpv1/">http://www.ee.oulu.fi/research/ouspg/protos/testing/c06/snmpv1/</a></li> </ol>		
<p><b>New features added to User Mode (see next page for User Mode tree):</b></p> <ol style="list-style-type: none"> <li>1. <b>Letterhead Mode</b> <b>On:</b> The machine feeds all pages through the duplex unit so that the last page of an odd-paged job is printed onto the front side of the paper.  <b>Off</b> (default setting): The last sheet of an odd-paged job is not fed through the duplex unit, therefore although the output time of this sheet is slightly faster, the last page is printed onto the rear side.</li> <li>2. <b>802.11 Ad hoc mode</b> (one type of Ad hoc mode used with wireless LAN) is supported from this version.</li> <li>3. <b>SSID</b> (used for infrastructure mode with wireless LAN) can now also be programmed from User Mode. Previously, this was only possible using Web Status Monitor or telnet.</li> <li>4. <b>128-bit WEP key</b> (a wireless LAN security feature) is supported from this version. Previous versions supported only 64-bit WEP.</li> </ol>		1.04
<p>Firmware modified to correct the following problem:</p> <ol style="list-style-type: none"> <li>1. Program update error occurs when Verify mode in the firmware updating procedure is used. Please refer to the RTB No. G0730002 for details.</li> <li>2. PM counter count-up method for Meter-charge mode is corrected.</li> </ol> <p>Change in Specification: Symbol sets PC-858, Latin 9 and Roman 9 have been added for EURO currency symbol.</p>		1.03

Reissued: 7-Jan-03

Model: Model K-P2	Date: 4-Jun-02	No.: RG073001d
Descriptions		Version
Firmware modified to correct the following problem: While downloading PS fonts to a machine with the HDD option installed, the correct PS serial number cannot be output.		1.02

## User Mode Tree

Underlined features have been added from version 1.04.



Reissued: 13-Mar-03

Model: Model K-P2	Date: 4-Jun-02	No.: RG073001e
-------------------	----------------	----------------

## RTB Update

The items in bold italics have been added.

Subject: Printer Controller Firmware History		Prepared by: A. Ishiyama	
From: Technical Services sec. Service Planning Dept.			
Classification:	<input type="checkbox"/> Troubleshooting <input type="checkbox"/> Mechanical <input type="checkbox"/> Paper path <input type="checkbox"/> Other (      )	<input type="checkbox"/> Part information <input type="checkbox"/> Electrical <input type="checkbox"/> Transmit/receive	<input checked="" type="checkbox"/> Action required <input type="checkbox"/> Service manual revision <input type="checkbox"/> Retrofit information

The following is the printer controller firmware history for the Model K-P2 (Kir-P2: G073/G074 model).

Part Number	Version	Production
<b><i>G0735900J</i></b>	<b><i>1.09</i></b>	<b><i>March '03 production</i></b>
G0735900H	1.08	December '02 production
G0735900G	1.07	October '02 production
G0735900F	1.05	June '02 production
G0735900E	1.04	April '02 production
G0735900D	1.03	March '02 production
G0735900C	1.02	February '02 production
G0735900B	1.01	First mass production

**Note:** The above firmware is being used in USA, European, and Asian models.  
The firmware version 1.06 has been skipped, and therefore, it will not be released.

Reissued: 13-Mar-03

Model: Model K-P2	Date: 4-Jun-02	No.: RG073001e
-------------------	----------------	----------------

## Descriptions of changes

Descriptions	Version
<p><i>The following have been fixed;</i></p> <p><b>&lt;PCL&gt;</b></p> <ol style="list-style-type: none"> <li><i>1. Selecting a HDD font or DIMM font may reduce the available memory. Note: SAP Barcode &amp; OCR printing are supported from this version, fixing the above symptom.</i></li> <li><i>2. Files with mixed paper sizes and orientations are not printed correctly.</i></li> <li><i>3. Barcodes are sometimes separated when printed out (GFPR#RE03010016).</i></li> <li><i>4. Supports mixed binding orientations with duplex jobs using cover sheets (GFPR# RC02080003).</i></li> <li><i>5. The downloaded PCL Barcode fonts are not printed correctly on the PCL font list (GFPR#RC03010004).</i></li> <li><i>6. The following problems with CAD print files have been fixed:</i> <ul style="list-style-type: none"> <li><i>- Modified the number of available pen selections from 8 to 256 when BitSw #3-3 is ON (GFPR# RE02030003).</i></li> <li><i>- The "null" character is ignored when it is included in HP/GL2 data. (GFPR# RE02050016).</i></li> <li><i>- The status flag for the bold selection command is refreshed when the command is selected in HP/GL2 data (GFPR# RE02050016).</i></li> </ul> </li> <li><i>7. Duplex face settings are not applied correctly when specified with PCL commands (GFPR#: RC02120014).</i></li> </ol> <p><b>&lt;System&gt;</b></p> <p><i>Data communication may be interrupted when using 802.11 Adhoc mode in a Wireless LAN environment.</i></p>	1.09
<p>Firmware modified to correct the following:</p> <ol style="list-style-type: none"> <li>Form Lines value (under PCL Menu) change after reboot the Machine. (GFPR# RA02090003)</li> <li>Response to PJI INFO CONFIG command does not include serial number.</li> <li>The print may stop during the processing of the file when using "INFICO". (GFPR# RE02090012)</li> <li>Wrong suffix of the firmware printed on the Configuration Page</li> </ol>	1.08

Reissued: 13-Mar-03

Model: Model K-P2		Date: 4-Jun-02	No.: RG073001e
Descriptions			Version
<p>Firmware modified to correct the following:</p> <ol style="list-style-type: none"> <li>Polish wording error: Incorrect: Diskonaly Correct: Dostateczny</li> <li>German wording error: Incorrect: WEP Einstelling Correct: WEP Einstellung</li> <li>Changed the default setting of DHCP to ON. NOTE: There is no change when updating the firmware. This feature is for the factory default.</li> <li>Support the new device type of wireless LAN (IEEE802.11b). Please refer to RTB #RG073004 for details which will be issued soon.</li> <li>HTTP and telnet protocols can be opened/closed using telnet. NOTE: After making the setting to disable HTTP, you cannot access the target device through web browser. If you want to change this settings, please use telnet to open HTTP. When telnet port is disabled, you have to clear the network settings (Memory Clear for NCS) to open the telnet port.</li> <li>The following has been fixed; PCL <ul style="list-style-type: none"> <li>Euro font does not print correctly.</li> <li>Line Spacing Command, "lochEsc&amp;l#D"loch, causes incorrect output (GFPR#RC02050002)</li> <li>Same line widths when BitSW #3-3 is ON in CAD printing (GFPR#RE02050016)</li> <li>Some True Type font might not be bolded.</li> <li>Slow Printing from AutoCAD (GFPR#RC02070001)</li> <li>When using bold font, lines may be printed on the blank of page.</li> </ul> PS3 <ul style="list-style-type: none"> <li>The printing speed of a PS job slows down after a PS3 job is reset.</li> <li>PS print file is printed as text (GFPR#RE02040013)</li> <li>Lines may be printed on the blank of page.</li> <li>The printer controller locks-up when printing from Unix Acrobat.</li> <li>Euro symbol is not printed when using PS driver. (GFPR#RC02040005) Please refer to RTB #RGENE011 which will be issued soon, for the procedure of how to fix this issue.</li> </ul> </li> </ol>			1.07

Reissued: 13-Mar-03

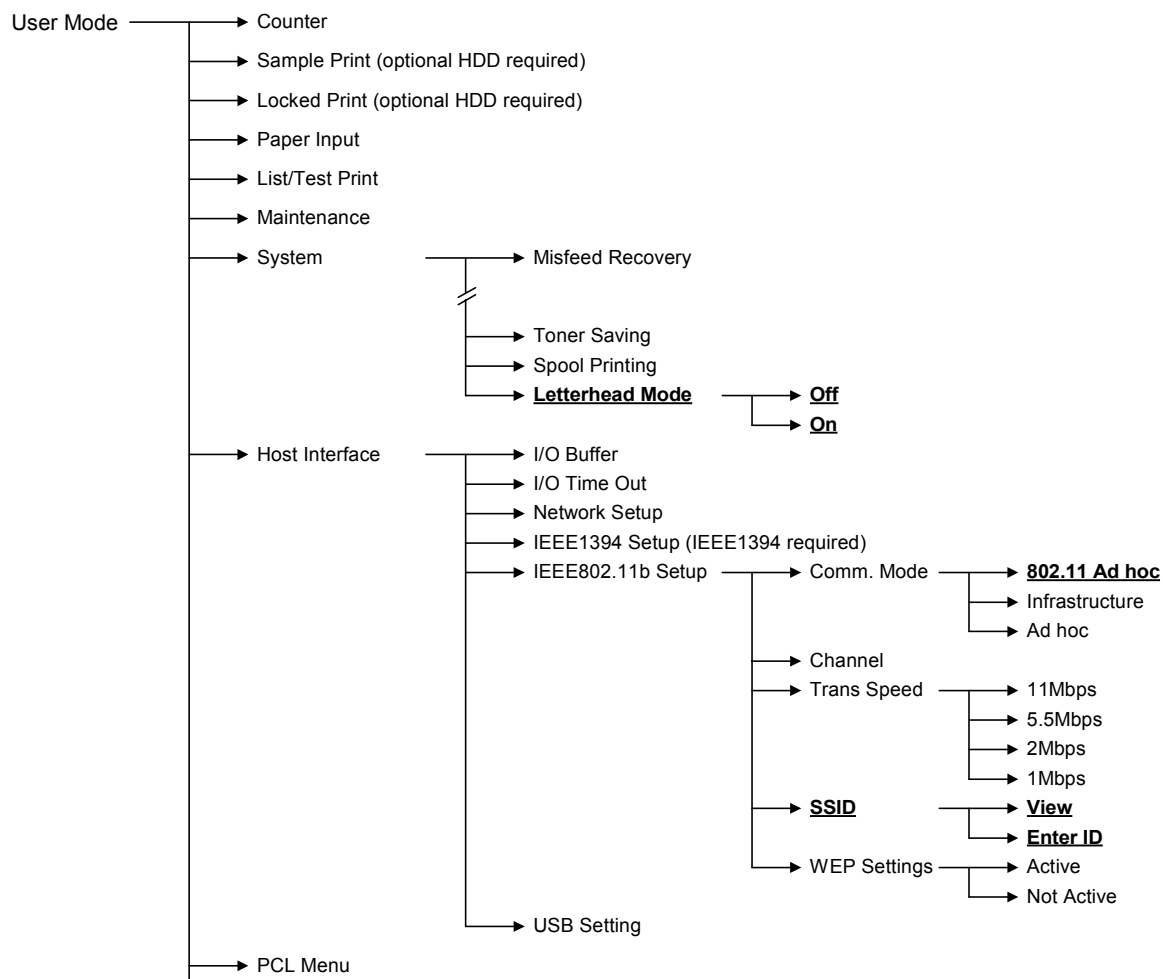
Model: Model K-P2	Date: 4-Jun-02	No.: RG073001e
Descriptions		Version
<p>The following have been fixed:</p> <p>PCL</p> <ul style="list-style-type: none"> <li>• Certain characters do not print (GFPR #RC02010008)</li> <li>• Modified so that some characters in symbol sets MS Text and Windows Baltic (19L) will appear exactly as they do with HP printers.</li> <li>• Modified so that PCLXL unsupported symbol (6M, 13J and 14J) sets will appear as "XL ERROR".</li> </ul> <p>Change in Specification:</p> <ul style="list-style-type: none"> <li>• If the machine has no HDD option, the PCL HDD Directory List (and font source) will not be printed on the PCL Configuration Page.</li> <li>• Supports the Status Readback function of the PCL5e.</li> <li>• If SSID is not entered, the message "SSID not entered" will display on the control panel for 3 seconds.</li> <li>• Supports PCLXL Euro symbol sets (PC-858, Latin 9, and Roman 9).</li> </ul>		1.05
<p>Firmware modified to correct the following:</p> <ol style="list-style-type: none"> <li>1. <b>SNMP vulnerability</b> SNMP security vulnerabilities reported by CERT on Feb.12, 2002 have been confirmed and fixed through the PROTOS c06-snmpv1 test suite. -CERT: <a href="http://www.cert.org/advisories/CA-2002-03.html">http://www.cert.org/advisories/CA-2002-03.html</a> -PROTOS c06-snmpv1 test Suite: <a href="http://www.ee.oulu.fi/research/ouspg/protos/testing/c06/snmpv1/">http://www.ee.oulu.fi/research/ouspg/protos/testing/c06/snmpv1/</a></li> </ol>		
<p><b>New features added to User Mode (see next page for User Mode tree):</b></p> <ol style="list-style-type: none"> <li>1. <b>Letterhead Mode</b> <b>On:</b> The machine feeds all pages through the duplex unit so that the last page of an odd-paged job is printed onto the front side of the paper.  <b>Off</b> (default setting): The last sheet of an odd-paged job is not fed through the duplex unit, therefore although the output time of this sheet is slightly faster, the last page is printed onto the rear side.</li> <li>2. <b>802.11 Ad hoc mode</b> (one type of Ad hoc mode used with wireless LAN) is supported from this version.</li> <li>3. <b>SSID</b> (used for infrastructure mode with wireless LAN) can now also be programmed from User Mode. Previously, this was only possible using Web Status Monitor or telnet.</li> <li>4. <b>128-bit WEP key</b> (a wireless LAN security feature) is supported from this version. Previous versions supported only 64-bit WEP.</li> </ol>		1.04
<p>Firmware modified to correct the following problem:</p> <ol style="list-style-type: none"> <li>1. Program update error occurs when Verify mode in the firmware updating procedure is used. Please refer to the RTB No. G0730002 for details.</li> <li>2. PM counter count-up method for Meter-charge mode is corrected.</li> </ol> <p>Change in Specification: Symbol sets PC-858, Latin 9 and Roman 9 have been added for EURO currency symbol.</p>		1.03

Reissued: 13-Mar-03

Model: Model K-P2	Date: 4-Jun-02	No.: RG073001e
Descriptions		Version
Firmware modified to correct the following problem: While downloading PS fonts to a machine with the HDD option installed, the correct PS serial number cannot be output.		1.02

## User Mode Tree

Underlined features have been added from version 1.04.



**Reissued: 13-Apr-04**

Model: Model K-P2	Date: 4-Jun-02	No.: RG073006a
-------------------	----------------	----------------

**RTB Update**

Subject: Printer Controller Firmware History		Prepared by: T. Shintani	
From: 1st Technical Support Sec. Service Support Dept.			
Classification:	<input type="checkbox"/> Troubleshooting	<input type="checkbox"/> Part information	<input checked="" type="checkbox"/> Action required
	<input type="checkbox"/> Mechanical	<input type="checkbox"/> Electrical	<input type="checkbox"/> Service manual revision
	<input type="checkbox"/> Paper path	<input type="checkbox"/> Transmit/receive	<input type="checkbox"/> Retrofit information
	<input type="checkbox"/> Other (       )		

Please see RTB #**RG073001f** for the firmware history information that was mistakenly released as RG073006.

Reissued: 13-Apr-04

Model: Model K-P2	Date: 4-Jun-02	No.: RG073001f
-------------------	----------------	----------------

## RTB Update

The items in bold italics have been added.

Subject: Printer Controller Firmware History		Prepared by: T.Shintani	
From: 1st Technical Support Sec. Service Support Dept.			
Classification:	<input type="checkbox"/> Troubleshooting <input type="checkbox"/> Mechanical <input type="checkbox"/> Paper path <input type="checkbox"/> Other (      )	<input type="checkbox"/> Part information <input type="checkbox"/> Electrical <input type="checkbox"/> Transmit/receive	<input checked="" type="checkbox"/> Action required <input type="checkbox"/> Service manual revision <input type="checkbox"/> Retrofit information

The following is the printer controller firmware history for the Model K-P2 (Kir-P2: G073/G074 model).

Part Number	Version	Production
<b><i>G0735900J</i></b>	<b><i>1.10</i></b>	<b><i>For service parts*</i></b>
G0735900J	1.09	March '03 production
G0735900H	1.08	December '02 production
G0735900G	1.07	October '02 production
G0735900F	1.05	June '02 production
G0735900E	1.04	April '02 production
G0735900D	1.03	March '02 production
G0735900C	1.02	February '02 production
G0735900B	1.01	First mass production

***\*: This change has only been applied to Service Parts, as this model has been discontinued.***

**Note:** The above firmware is being used in USA, European, and Asian models.  
The firmware version 1.06 has been skipped, and therefore, it will not be released.

Reissued: 13-Apr-04

Model: Model K-P2	Date: 4-Jun-02	No.: RG073001f
-------------------	----------------	----------------

Symptom Corrected	Version
<p><b>Firmware modified to correct the following:</b></p> <ol style="list-style-type: none"> <li><i>If the maintenance kit replacement timing coincides with a Toner End condition, only the kit replacement message is displayed (no Toner End message is displayed).</i></li> <li><i>If an error condition (e.g. cover open, jam) occurs while the maintenance kit replacement message is being displayed, the appropriate error message appears but remains even after the error condition has been cleared.</i></li> </ol> <p><b>&lt;PCL&gt;</b></p> <ol style="list-style-type: none"> <li><i>Merged jobs (PCL/PS) cannot be printed (TechMail#TS030100).</i></li> <li><i>The controller locks up when all of the following conditions occur (GFPR RC03100014).</i> <ul style="list-style-type: none"> <li><i>PCL/PS auto switching is ON</i></li> <li><i>The 255<sup>th</sup> byte of the print data is null (zeros)</i></li> <li><i>The &lt;ESC&gt;E command occurs somewhere in the first 128 bytes.</i></li> </ul> </li> <li><i>The form overlay and text in a PCL job are printed separately (GFPR #RC03080015).</i></li> <li><i>Vector lines are shifted slightly to the side with Overlay Printing (PCL 5c 1.4.0.0): GFPR #RC03070024.</i></li> <li><i>Incorrect font size settings when printing a multi-page document in PCL format: GFPR #RC03090002.</i></li> <li><i>SC819 occurs when sending with an RPCS driver for Windows XP via a USB connection.</i></li> <li><i>SC818 occurs if print jobs are continually sent via a USB connection.</i></li> </ol>	1.10
<p>Firmware modified to correct the following:</p> <p><b>&lt;PCL&gt;</b></p> <ol style="list-style-type: none"> <li>Selecting HDD font or DIMM font may reduce the available memory. Note: SAP Barcode &amp; OCR printing are supported from this version, fixing the above symptom.</li> <li>Files with mixed paper sizes and orientations are not printed correctly.</li> <li>Barcodes are sometimes separated when printed out (GFPR#RE03010016).</li> <li>Supports mixed binding orientations with duplex jobs using cover sheets (GFPR# RC02080003).</li> <li>The downloaded PCL Barcode fonts are not printed correctly on the PCL font list (GFPR#RC03010004).</li> <li>The following problems with CAD print files have been fixed: <ul style="list-style-type: none"> <li>Modified the number of available pen selections from 8 to 256 when BitSw #3-3 is ON (GFPR# RE02030003).</li> <li>The "null" character is ignored when it is included in HP/GL2 data. (GFPR# RE02050016).</li> <li>The status flag for the bold selection command is refreshed when the command is selected in HP/GL2 data (GFPR# RE02050016).</li> </ul> </li> <li>Duplex face settings are not applied correctly when specified with PCL commands (GFPR#: RC02120014).</li> </ol> <p><b>&lt;System&gt;</b></p> <p>Data communication may be interrupted when using 802.11 Adhoc mode in a Wireless LAN environment.</p>	1.09

Reissued: 13-Apr-04

Symptom Corrected		Version
Firmware modified to correct the following: <ol style="list-style-type: none"> <li>Form Lines value (under PCL Menu) change after reboot the Machine. (GFPR# RA02090003)</li> <li>Response to PJL INFO CONFIG command does not include serial number.</li> <li>The print may stop during the processing of the file when using "INFICO". (GFPR# RE02090012)</li> <li>Wrong suffix of the firmware printed on the Configuration Page</li> </ol>		1.08
Firmware modified to correct the following: <ol style="list-style-type: none"> <li>Polish wording error: Incorrect: Diskonaly Correct: Dostateczny</li> <li>German wording error: Incorrect: WEP Einstelling Correct: WEP Einstellung</li> <li>Changed the default setting of DHCP to ON. NOTE: There is no change when updating the firmware. This feature is for the factory default.</li> <li>Support the new device type of wireless LAN (IEEE802.11b). Please refer to RTB #RG073004 for details which will be issued soon.</li> <li>HTTP and telnet protocols can be opened/closed using telnet. NOTE: After making the setting to disable HTTP, you cannot access the target device through web browser. If you want to change this settings, please use telnet to open HTTP. When telnet port is disabled, you have to clear the network settings (Memory Clear for NCS) to open the telnet port.</li> <li>The following has been fixed; PCL               <ul style="list-style-type: none"> <li>Euro font does not print correctly.</li> <li>Line Spacing Command, "lochEsc&amp;l#D"loch, causes incorrect output (GFPR#RC02050002)</li> <li>Same line widths when BitSW #3-3 is ON in CAD printing (GFPR#RE02050016)</li> <li>Some True Type font might not be bolded.</li> <li>Slow Printing from AutoCAD (GFPR#RC02070001)</li> <li>When using bold font, lines may be printed on the blank of page.</li> </ul> </li> </ol>		1.07
PS3 <ul style="list-style-type: none"> <li>The printing speed of a PS job slows down after a PS3 job is reset.</li> <li>PS print file is printed as text (GFPR#RE02040013)</li> <li>Lines may be printed on the blank of page.</li> <li>The printer controller locks-up when printing from Unix Acrobat.</li> <li>Euro symbol is not printed when using PS driver. (GFPR#RC02040005) Please refer to RTB #RG073004 for details which will be issued soon, for the procedure of how to fix this issue.</li> </ul>		

Reissued: 13-Apr-04

Symptom Corrected		Version
<p>The following have been fixed:</p> <p>PCL</p> <ul style="list-style-type: none"> <li>• Certain characters do not print (GFPR #RC02010008)</li> <li>• Modified so that some characters in symbol sets MS Text and Windows Baltic (19L) will appear exactly as they do with HP printers.</li> <li>• Modified so that PCLXL unsupported symbol (6M, 13J and 14J) sets will appear as "XL ERROR".</li> </ul> <p>Change in Specification:</p> <ul style="list-style-type: none"> <li>• If the machine has no HDD option, the PCL HDD Directory List (and font source) will not be printed on the PCL Configuration Page.</li> <li>• Supports the Status Readback function of the PCL5e.</li> <li>• If SSID is not entered, the message "SSID not entered" will display on the control panel for 3 seconds.</li> <li>• Supports PCLXL Euro symbol sets (PC-858, Latin 9, and Roman 9).</li> </ul>		1.05
<p>Firmware modified to correct the following:</p> <ol style="list-style-type: none"> <li>1. <b>SNMP vulnerability</b> SNMP security vulnerabilities reported by CERT on Feb.12, 2002 have been confirmed and fixed through the PROTOS c06-snmpv1 test suite. -CERT: <a href="http://www.cert.org/advisories/CA-2002-03.html">http://www.cert.org/advisories/CA-2002-03.html</a> -PROTOS c06-snmpv1 test Suite: <a href="http://www.ee.oulu.fi/research/ouspg/protos/testing/c06/snmpv1/">http://www.ee.oulu.fi/research/ouspg/protos/testing/c06/snmpv1/</a></li> </ol>		
<p><b>New features added to User Mode (see next page for User Mode tree):</b></p> <ol style="list-style-type: none"> <li>1. <b>Letterhead Mode</b> <b>On:</b> The machine feeds all pages through the duplex unit so that the last page of an odd-paged job is printed onto the front side of the paper.  <b>Off</b> (default setting): The last sheet of an odd-paged job is not fed through the duplex unit, therefore although the output time of this sheet is slightly faster, the last page is printed onto the rear side.</li> <li>2. <b>802.11 Ad hoc mode</b> (one type of Ad hoc mode used with wireless LAN) is supported from this version.</li> <li>3. <b>SSID</b> (used for infrastructure mode with wireless LAN) can now also be programmed from User Mode. Previously, this was only possible using Web Status Monitor or telnet.</li> <li>4. <b>128-bit WEP key</b> (a wireless LAN security feature) is supported from this version. Previous versions supported only 64-bit WEP.</li> </ol>		1.04
<p>Firmware modified to correct the following problem:</p> <ol style="list-style-type: none"> <li>1. Program update error occurs when Verify mode in the firmware updating procedure is used. Please refer to the RTB No. G0730002 for details.</li> <li>2. PM counter count-up method for Meter-charge mode is corrected.</li> </ol> <p>Change in Specification: Symbol sets PC-858, Latin 9 and Roman 9 have been added for EURO currency symbol.</p>		1.03

Model: Model K-P2

Date: 4-Jun-02

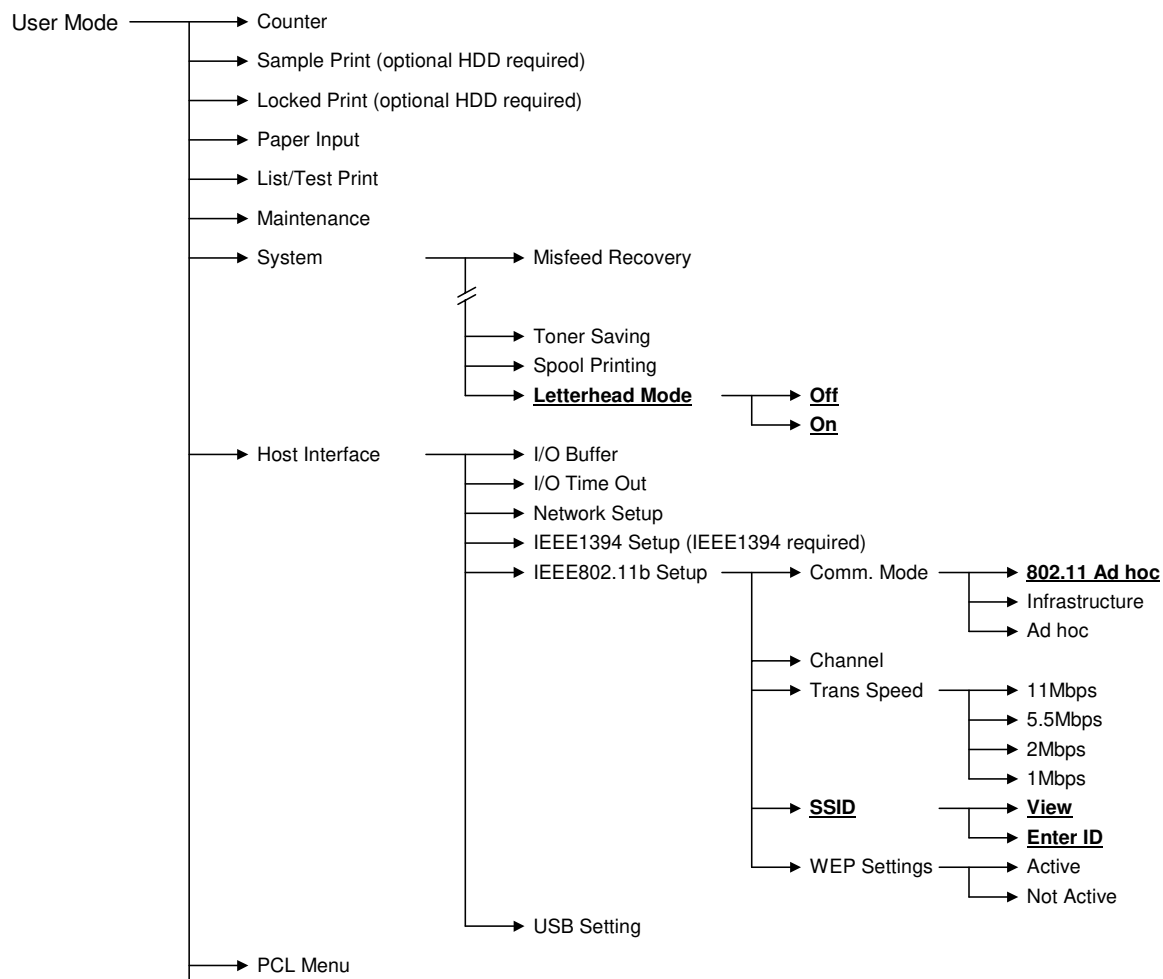
No.: RG073001f

Reissued: 13-Apr-04

Model: Model K-P2	Date: 4-Jun-02	No.: RG073001f
Symptom Corrected		Version
Firmware modified to correct the following problem: While downloading PS fonts to a machine with the HDD option installed, the correct PS serial number cannot be output.		1.02

## User Mode Tree

Underlined features have been added from version 1.04.



Model: Model K-P2		Date: 19-Apr-05	No.: RG073007
Subject: Controller NVRAM		Prepared by: A. Ishiyama	
From: 1st Technical Support Sec. Service Support Dept.			
Classification:	<input type="checkbox"/> Troubleshooting <input checked="" type="checkbox"/> Part information <input type="checkbox"/> Action required <input type="checkbox"/> Mechanical <input type="checkbox"/> Electrical <input type="checkbox"/> Service manual revision <input type="checkbox"/> Paper path <input type="checkbox"/> Transmit/receive <input type="checkbox"/> Retrofit information <input type="checkbox"/> Other (      )		

## Important Note: Blank NVRAM Service Parts

When you replace the controller NVRAM in the field, use the part shown below. This part is already listed in the Parts Catalog.

Model	Part No.	Description	IC No.	Product Code	Parts Catalog Information	
					Page	Index
K-P1	14075335	RAM – STK12C68-P55	IC27	G056/G058	27, 29	119
K-P2	14075497	RAM – FM1808-120-P	IC54	G073	27, 29	124
				G074	31, 33	121
K-P3	14075856	RAM – FM18L08-70-P	IC68	G091	29, 35	126
K-P4	14076465	RAM:FM25L256-PG(REV.AG)	IC5	G116	40, 45	130
C-P1	14075856	RAM – FM18L08-70-P	IC68	G094	31, 37	122
				G095	41, 47	126
C-P2b	14075856	RAM – FM18L08-70-P	IC68	G112	53, 57	121
C-P2c	14076465	RAM:FM25L256-PG(REV.AG)	IC5	G113	60, 65	130

- This is **completely blank** NVRAM. When you get this part from the Parts Center, it does **not** have a value of “0”.
- After you install this NVRAM and turn the power OFF/ON, the machine will put a value of “0” inside the NVRAM.

**IMPORTANT:** When you install this NVRAM, make sure it is a completely new service part. **DO NOT** install the NVRAM if it was already used. If you do, machine problems can occur.

**Reissued: 08-Oct-08**

Model: Model K-P2	Date: 4-Jun-02	No.: RG073001g
-------------------	----------------	----------------

**RTB Update**

The items in bold italics have been added.

Subject: Printer Controller Firmware History		Prepared by: Y.Yoshida	
From: 1st Technical Support Sec. Service Support Dept.			
Classification:	<input type="checkbox"/> Troubleshooting <input type="checkbox"/> Mechanical <input type="checkbox"/> Paper path <input checked="" type="checkbox"/> Other (      )	<input type="checkbox"/> Part information <input type="checkbox"/> Electrical <input type="checkbox"/> Transmit/receive	<input type="checkbox"/> Action required <input type="checkbox"/> Service manual revision <input type="checkbox"/> Retrofit information

The following is the printer controller firmware history for the Model K-P2 (Kir-P2: G073/G074 model).

Part Number	Version	Production
<b><i>G0735900K</i></b>	<b><i>1.11</i></b>	<b><i>October '08 production</i></b>
G0735900J	1.10	For service parts*
G0735900J	1.09	March '03 production
G0735900H	1.08	December '02 production
G0735900G	1.07	October '02 production
G0735900F	1.05	June '02 production
G0735900E	1.04	April '02 production
G0735900D	1.03	March '02 production
G0735900C	1.02	February '02 production
G0735900B	1.01	First mass production

***\*: This change has only been applied to Service Parts, as this model has been discontinued.***

**Note:** The above firmware is being used in USA, European, and Asian models.  
The firmware version 1.06 has been skipped, and therefore, it will not be released.

**Reissued: 08-Oct-08**

Model: Model K-P2	Date: 4-Jun-02	No.: RG073001g
-------------------	----------------	----------------

Symptom Corrected	Version
<b><i>Other changes:</i></b> <b><i>The firmware was modified to support the new Fujitsu hard disk drive</i></b>	<b>1.11</b>
<p>Firmware modified to correct the following:</p> <ol style="list-style-type: none"> <li>If the maintenance kit replacement timing coincides with a Toner End condition, only the kit replacement message is displayed (no Toner End message displayed).</li> <li>If an error condition (e.g. cover open, jam) occurs while the maintenance kit replacement message is being displayed, the appropriate error message appears but remains even after the error condition has been cleared.</li> </ol> <p>&lt;PCL&gt;</p> <ol style="list-style-type: none"> <li>Merged jobs (PCL/PS) cannot be printed (TechMail#TS030100).</li> <li>The controller locks up when all of the following conditions occur (GFPR RC03100014). <ul style="list-style-type: none"> <li>PCL/PS auto switching is ON</li> <li>The 255<sup>th</sup> byte of the print data is null (zeros)</li> <li>The &lt;ESC&gt;E command occurs somewhere in the first 128 bytes.</li> </ul> </li> <li>The form overlay and text in a PCL job are printed separately (GFPR #RC03080015).</li> <li>Vector lines are shifted slightly to the side with Overlay Printing (PCL 5c 1.4.0.0): GFPR #RC03070024.</li> <li>Incorrect font size settings when printing a multi-page document in PCL format: GFPR #RC03090002.</li> <li>SC819 occurs when sending with an RPCS driver for Windows XP via a USB connection.</li> <li>SC818 occurs if print jobs are continually sent via a USB connection.</li> </ol>	1.10
<p>Firmware modified to correct the following:</p> <p>&lt;PCL&gt;</p> <ol style="list-style-type: none"> <li>Selecting HDD font or DIMM font may reduce the available memory. Note: SAP Barcode &amp; OCR printing are supported from this version, fixing the above symptom.</li> <li>Files with mixed paper sizes and orientations are not printed correctly.</li> <li>Barcodes are sometimes separated when printed out (GFPR#RE03010016).</li> <li>Supports mixed binding orientations with duplex jobs using cover sheets (GFPR# RC02080003).</li> <li>The downloaded PCL Barcode fonts are not printed correctly on the PCL font list (GFPR#RC03010004).</li> <li>The following problems with CAD print files have been fixed: <ul style="list-style-type: none"> <li>Modified the number of available pen selections from 8 to 256 when BitSw #3-3 is ON (GFPR# RE02030003).</li> <li>The "null" character is ignored when it is included in HP/GL2 data. (GFPR# RE02050016).</li> <li>The status flag for the bold selection command is refreshed when the command is selected in HP/GL2 data (GFPR# RE02050016).</li> </ul> </li> <li>Duplex face settings are not applied correctly when specified with PCL commands (GFPR#: RC02120014).</li> </ol> <p>&lt;System&gt;</p> <p>Data communication may be interrupted when using 802.11 Adhoc mode in a Wireless LAN environment.</p>	1.09

**Reissued: 08-Oct-08**

Model: Model K-P2		Date: 4-Jun-02	No.: RG073001g
Symptom Corrected			Version
Firmware modified to correct the following: <ol style="list-style-type: none"> <li>Form Lines value (under PCL Menu) change after reboot the Machine. (GFPR# RA02090003)</li> <li>Response to PJI INFO CONFIG command does not include serial number.</li> <li>The print may stop during the processing of the file when using "INFICO". (GFPR# RE02090012)</li> <li>Wrong suffix of the firmware printed on the Configuration Page</li> </ol>			1.08
Firmware modified to correct the following: <ol style="list-style-type: none"> <li>Polish wording error: Incorrect: Diskonaly Correct: Dostateczny</li> <li>German wording error: Incorrect: WEP Einstelling Correct: WEP Einstellung</li> <li>Changed the default setting of DHCP to ON. NOTE: There is no change when updating the firmware. This feature is for the factory default.</li> <li>Support the new device type of wireless LAN (IEEE802.11b). Please refer to RTB #RG073004 for details which will be issued soon.</li> <li>HTTP and telnet protocols can be opened/closed using telnet. NOTE: After making the setting to disable HTTP, you cannot access the target device through web browser. If you want to change this settings, please use telnet to open HTTP. When telnet port is disabled, you have to clear the network settings (Memory Clear for NCS) to open the telnet port.</li> <li>The following has been fixed; PCL               <ul style="list-style-type: none"> <li>Euro font does not print correctly.</li> <li>Line Spacing Command, "lochEsc&amp;l#D"loch, causes incorrect output (GFPR#RC02050002)</li> <li>Same line widths when BitSW #3-3 is ON in CAD printing (GFPR#RE02050016)</li> <li>Some True Type font might not be bolded.</li> <li>Slow Printing from AutoCAD (GFPR#RC02070001)</li> <li>When using bold font, lines may be printed on the blank of page.</li> </ul> </li> </ol> PS3 <ul style="list-style-type: none"> <li>The printing speed of a PS job slows down after a PS3 job is reset.</li> <li>PS print file is printed as text (GFPR#RE02040013)</li> <li>Lines may be printed on the blank of page.</li> <li>The printer controller locks-up when printing from Unix Acrobat.</li> <li>Euro symbol is not printed when using PS driver. (GFPR#RC02040005) Please refer to RTB #RG073004 for details which will be issued soon, for the procedure of how to fix this issue.</li> </ul>			1.07

**Reissued: 08-Oct-08**

Model: Model K-P2		Date: 4-Jun-02	No.: RG073001g
Symptom Corrected			Version
<p>The following have been fixed:</p> <p>PCL</p> <ul style="list-style-type: none"><li>• Certain characters do not print (GFPR #RC02010008)</li><li>• Modified so that some characters in symbol sets MS Text and Windows Baltic (19L) will appear exactly as they do with HP printers.</li><li>• Modified so that PCLXL unsupported symbol (6M, 13J and 14J) sets will appear as "XL ERROR".</li></ul> <p>Change in Specification:</p> <ul style="list-style-type: none"><li>• If the machine has no HDD option, the PCL HDD Directory List (and font source) will not be printed on the PCL Configuration Page.</li><li>• Supports the Status Readback function of the PCL5e.</li><li>• If SSID is not entered, the message "SSID not entered" will display on the control panel for 3 seconds.</li><li>• Supports PCLXL Euro symbol sets (PC-858, Latin 9, and Roman 9).</li></ul>			1.05
<p>Firmware modified to correct the following:</p> <p>1. <b>SNMP vulnerability</b> SNMP security vulnerabilities reported by CERT on Feb.12, 2002 have been confirmed and fixed through the PROTOS c06-snmpv1 test suite. -CERT: <a href="http://www.cert.org/advisories/CA-2002-03.html">http://www.cert.org/advisories/CA-2002-03.html</a> -PROTOS c06-snmpv1 test Suite: <a href="http://www.ee.oulu.fi/research/ouspg/protos/testing/c06/snmpv1/">http://www.ee.oulu.fi/research/ouspg/protos/testing/c06/snmpv1/</a></p>			1.04
<p><b>New features added to User Mode (see next page for User Mode tree):</b></p> <p>1. <b>Letterhead Mode</b> <b>On:</b> The machine feeds all pages through the duplex unit so that the last page of an odd-paged job is printed onto the front side of the paper.</p> <p><b>Off</b> (default setting): The last sheet of an odd-paged job is not fed through the duplex unit, therefore although the output time of this sheet is slightly faster, the last page is printed onto the rear side.</p> <p>2. <b>802.11 Ad hoc mode</b> (one type of Ad hoc mode used with wireless LAN) is supported from this version.</p> <p>3. <b>SSID</b> (used for infrastructure mode with wireless LAN) can now also be programmed from User Mode. Previously, this was only possible using Web Status Monitor or telnet.</p> <p>4. <b>128-bit WEP key</b> (a wireless LAN security feature) is supported from this version. Previous versions supported only 64-bit WEP.</p>			
<p>Firmware modified to correct the following problem:</p> <p>1. Program update error occurs when Verify mode in the firmware updating procedure is used. Please refer to the RTB No. G0730002 for details.</p> <p>2. PM counter count-up method for Meter-charge mode is corrected.</p> <p>Change in Specification: Symbol sets PC-858, Latin 9 and Roman 9 have been added for EURO currency symbol.</p>			1.03

Reissued: 08-Oct-08

Model: Model K-P2	Date: 4-Jun-02	No.: RG073001g
Symptom Corrected		Version
Firmware modified to correct the following problem: While downloading PS fonts to a machine with the HDD option installed, the correct PS serial number cannot be output.		1.02

## User Mode Tree

Underlined features have been added from version 1.04.

