

Model: Model K-P1		Date: 18-Jan-01	No.: RG058001
Subject: Printer Controller Firmware History		Prepared by: K. Misugi	
From: Technical Services Dept., GTS Division			
Classification:	<input type="checkbox"/> Troubleshooting <input type="checkbox"/> Mechanical <input type="checkbox"/> Paper path <input type="checkbox"/> Other ()	<input type="checkbox"/> Part information <input type="checkbox"/> Electrical <input type="checkbox"/> Transmit/receive	<input checked="" type="checkbox"/> Action required <input type="checkbox"/> Service manual revision <input type="checkbox"/> Retrofit information

Printer controller firmware history for the Kir-P1 (G058/G056 model).

Part Number	Version	Production
G0565920F	1.05	December '00 production
G0565920E	1.04	Does not exist in the field
G0565920D	1.03	Does not exist in the field
G0565920C	1.02	November '00 production
G0565920B	1.01	1st mass production

Note: The above firmware is being used in USA, Europe, and Asia models.

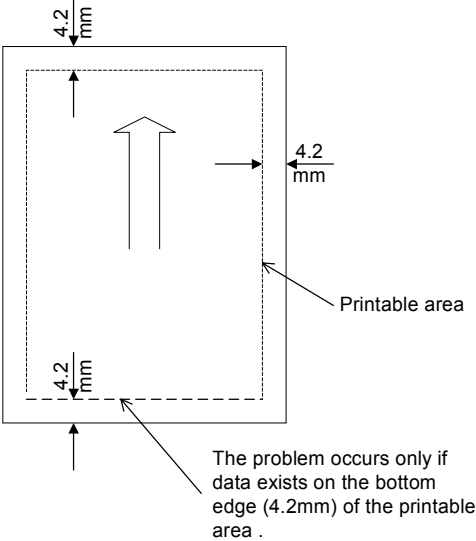
Please refer to the next page for descriptions of the changes.

Model: Model K-P1

Date: 18-Jan-01

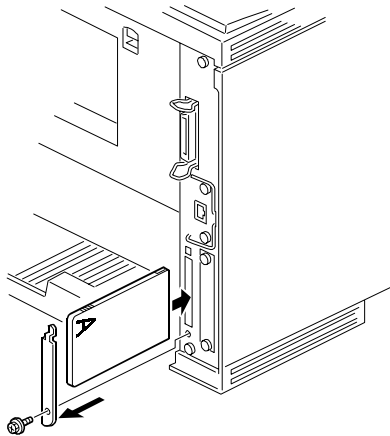
No.: RG058001

Descriptions of the changes

Descriptions	Version
<p>1. Firmware modified to improve print quality when image data is printed using the PCL6 driver. Note: This occurs only in the following condition.</p> <ul style="list-style-type: none"> - When printing image data - When using the PCL6 driver <p>2. New feature added in the user mode. "Curl Prevention" mode is added in the user mode. (Curl Prevention: User mode/ Maintenance) Please note that the function of this mode is the same as "Curl Control" in the printer engine service mode. It lowers the fusing temperature to prevent paper from curling. Advise customers to use this mode when paper jams occur during duplex rear side printing. Note: When this mode is switched on, "Curl Control" in the service mode is also switched on.</p>	
<p>Firmware modified to correct the following problem.</p> <p>Symptom: During PCL printing, if data extends over the bottom edge of the printable area, the machine freezes, displaying "Processing" and operation will no longer be possible.</p> <p>Condition: The printer driver is <u>not</u> being used Print data exists on the <u>bottom edge</u> of the printable area (at 4.2 mm)</p>  <p>Action: Update the controller firmware.</p>	<p>1.05</p>
<p>Firmware modified to make corrections in the German wording.</p>	<p>1.02</p>

Firmware Updating Procedure

1. Prepare 2 IC cards with the controller firmware.
2. Turn off the main switch.
3. Remove the IC card slot cover on the rear side of the machine as shown.



4. Insert IC card 1 and turn on the main switch.
"Onboard Sys. 1/2" is displayed.
5. Press "# Enter."
Note: Make sure that * is displayed.
6. Scroll with the [▲] [▼] key and select "Update."
Press "# Enter" to start downloading.
The "On Line" LED starts blinking and the machine starts to download the program.
(Notice that the * mark disappears as the program is downloaded.)
7. When updating with card 1 is finished, "Update 1/2 task done" is displayed.
8. Turn off the main switch and replace the card with IC card 2.
Turn on the main switch, then downloading will automatically start.
9. When updating with card 2 is finished, "Update done" is displayed.
Then, remove the card, turn on the main switch and print the configuration sheet.
Check that controller firmware is successfully updated.

Onboard Sys. 1/2

Onboard Sys. 1/2

*

Update

Updating

Update 1/2 task done

Updating

Update done

Model: Model K-P1		Date: 03-Apr-01	No.: RG058002
Subject: Printer Engine Firmware History		Prepared by: K. Misugi	
From: Technical Services Dept., GTS Division			
Classification:	<input type="checkbox"/> Troubleshooting <input type="checkbox"/> Part information <input type="checkbox"/> Action required <input type="checkbox"/> Mechanical <input type="checkbox"/> Electrical <input type="checkbox"/> Service manual revision <input type="checkbox"/> Paper path <input type="checkbox"/> Transmit/receive <input type="checkbox"/> Retrofit information <input checked="" type="checkbox"/> Other ()		

This RTB announces the printer engine firmware history for model K-P1 (Kir-P1: G058/G056).

Part Number	Version	Production
G0525172H	1.11	February '01
G0525172G	1.10	(does not exist in the field)
G0525172F	1.09	December '00
G0525172E	1.08	November '00
G0525172D	1.07	Beginning of mass production

Note: The above firmware is being used in USA, Europe, and Asia models.

Change Descriptions

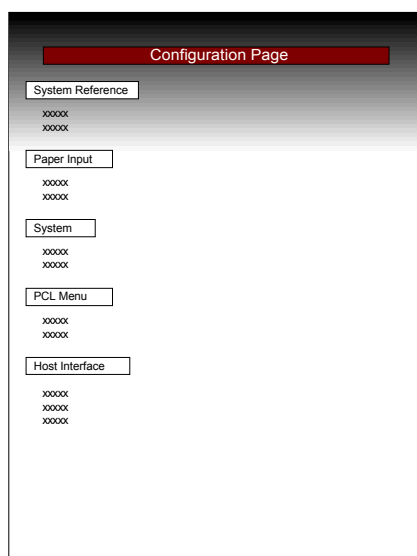
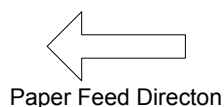
Descriptions	Version
No changes from previous version (only carryover items for Japanese domestic version).	1.11
Firmware modified to correct the following: <ul style="list-style-type: none"> The machine was showing SC 546 when the symptom was SC 541. Duplex backside (leading edge) registration adjustment was applied only to by-pass feeding. Firmware modified so that the adjustment is applied to all paper sources. 	1.09
The engine process timing is changed to further ensure that waste toner tank overflow does not occur when the machine is used under low duty.	1.08

Model: Model K-P1		Date: 09-Apr-01	No.: RG058003
Subject: Dirty Background on Printouts		Prepared by: K. Misugi	
From: Technical Services Dept., GTS Division			
Classification:	<input checked="" type="checkbox"/> Troubleshooting	<input type="checkbox"/> Part information	<input type="checkbox"/> Action required
	<input type="checkbox"/> Mechanical	<input type="checkbox"/> Electrical	<input type="checkbox"/> Service manual revision
	<input type="checkbox"/> Paper path	<input type="checkbox"/> Transmit/receive	<input type="checkbox"/> Retrofit information
	<input type="checkbox"/> Other ()		



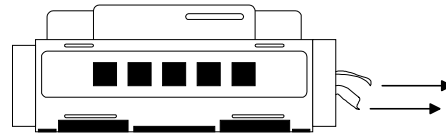
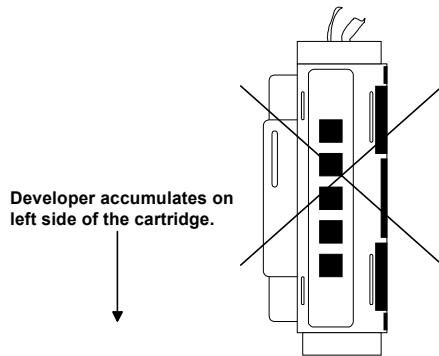
SYMPTOM

Dirty background may occur at installation, either on the right side or throughout the printout. The following is an example of dirty background on the right side with A4/LT LEF:



CAUSE**Dirty background on the right side:**

The developer will shift to the left side if the cartridge is tilted as shown below when the sealing tapes are being removed. This causes toner to be over-supplied on the right side of the cartridge, which in turn causes the dirty background on the right side of the printout.



When removing the tape, place the machine on a level surface.

Dirty background throughout the page:

This may occur when the user turns on the main switch without removing the tape seals or when the cartridge has been shaken after the seals are removed.

The position of the toner agitator is adjusted at the factory. When the main switch is turned on, the main motor turns the agitator. Then, when the user actually removes the seals and resets the cartridge in the machine, the agitator is no longer in the proper position, and this causes dirty background on the printouts.

If the cartridge is shaken after the tape seals are removed, dirty background may occur as the developer is not evenly distributed in the development unit.

Model: Model K-P1

Date: 09-Apr-01

No.: RG058003

SOLUTION

This symptom may only occur at installation. If it should occur, please advise customers to print out 30 to 40 pages. In most cases, the symptom will gradually disappear.

In addition, as a preventative measure, please advise customers to be sure and do the following:

- Remove the seals before turning on the main switch.
- Place the cartridge on a level surface when removing the seals.
- Once the seals have been removed, do not shake the cartridge.
Note: This only applies to cartridge installation and replacement.

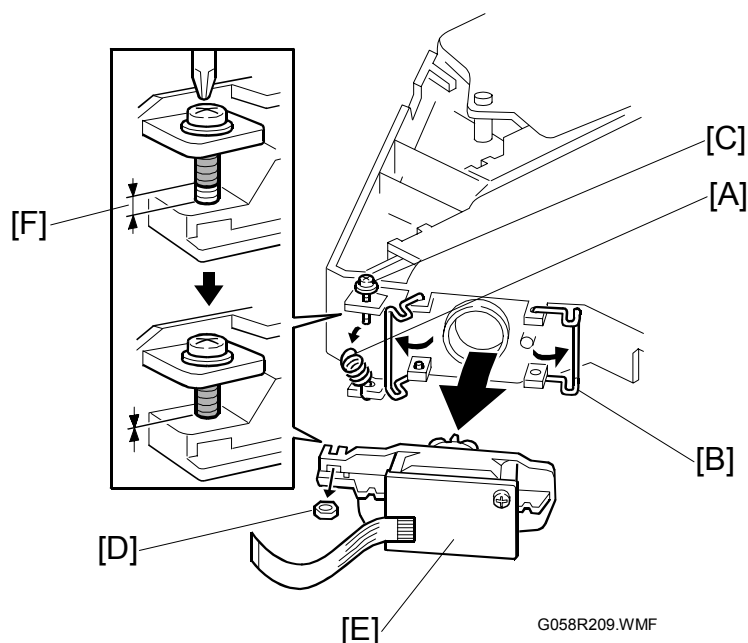
From March 2001 production, the following changes were applied to alert customers to these points.

- Strips of yellow tape have been added that will stick out of the machine, calling attention to the user to remove the tape seals inside before turning on the main switch.
- A label and caution sheet have been added cautioning the user not to tilt the cartridge when removing the seals.

Model: Kir-P1		Date: 20-Apr-01	No.: RG058004
Subject: LD Unit Position Adjustment		Prepared by: S. Tomoe	
From: Technical Services Dept., GTS Division			
Classification:	<input type="checkbox"/> Troubleshooting <input type="checkbox"/> Part information <input type="checkbox"/> Action required		
	<input type="checkbox"/> Mechanical <input type="checkbox"/> Electrical <input type="checkbox"/> Service manual revision		
	<input type="checkbox"/> Paper path <input type="checkbox"/> Transmit/receive <input type="checkbox"/> Retrofit information		
	<input checked="" type="checkbox"/> Other ()		

The Service Manual procedure for the LD unit position adjustment has been changed from the first machine of mass production. The new procedure is as follows:

3.3.5 Laser Diode Unit



Laser Unit (➡ 3.3.4 Laser Unit)

[A]: Spring

[B]: LD unit holders

[C]: Loosen the screw

[D]: Nut

[E]: LD Unit

NOTE: 1) Do not remove the screws that secure the LD board.
2) Do not touch any variable resistors on the LD board.

When installing the LD Unit:

Tighten the screw [C] until the unpainted portion of the screw [F] is not visible.

After installing the LD unit, check the test pattern for the final adjustment (see the following procedure).

Reissued: 20-Apr-01

Model: Model K-P1	Date: 12-April-01	No.: RG058001a
-------------------	-------------------	----------------

RTB Correction

The items in bold italics have been corrected or added.

Subject: Printer Controller Firmware History		Prepared by: K. Misugi	
From: Technical Services Dept., GTS Division			
Classification:	<input type="checkbox"/> Troubleshooting	<input type="checkbox"/> Part information	<input checked="" type="checkbox"/> Action required
	<input type="checkbox"/> Mechanical	<input type="checkbox"/> Electrical	<input type="checkbox"/> Service manual revision
	<input type="checkbox"/> Paper path	<input type="checkbox"/> Transmit/receive	<input type="checkbox"/> Retrofit information
	<input type="checkbox"/> Other ()		

This RTB informs the printer controller firmware history of the Kir-P1 (G058/G056 model).

Part Number	Version	Production
<i>G0565920J</i>	<i>1.08</i>	<i>US market: February '01 production Europe/Asia: March '01 production</i>
G0565920G	1.06	US market: Does not exist in the field. Europe/Asia: February '01 production
G0565920F	1.05	December '00 production
(G0565920E)	(1.04)	Does not exist in the field
(G0565920D)	(1.03)	Does not exist in the field
G0565920C	1.02	November '00 production
G0565920B	1.01	1 st mass production

Note: The above firmware is being used in USA, Europe, and Asia models.

Descriptions of the changes (new ones only; for older ones see earlier RTBS)

Descriptions	Version
<i>1. Modified so the machine can be used with Axis print servers. 2. Modified to correct Polish and Portuguese wording errors.</i>	<i>1.08</i>
<i>Firmware modified to correct the following problem.</i> <i>Symptom:</i> <i>In rare cases with graphic images, dark band appears or part of image becomes black on printouts.</i>	<i>1.06</i>

Reissued: 20-Apr-01

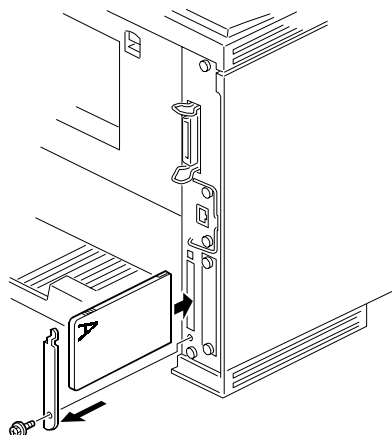
Model: Model K-P1

Date: 12-April-01

No.: RG058001a

Firmware Updating Procedure

1. Prepare 2 IC cards with the controller firmware.
2. Turn off the main switch.
3. Remove the IC card slot cover on the rear side of the machine as shown.



4. Insert the IC card-1 and turn on the main switch.
"Onboard Sys. 1/2" is displayed.
5. Press "# Enter."
Note: Make sure that * is displayed.
6. Scroll with the [▲] [▼] key and select "Update."
Press "# Enter" to start downloading.
The "On Line" LED starts blinking and the machine starts to download the program.
(Notice that the * mark disappears as the program is downloaded.)
7. When updating card-1 is finished, "Update 1/2 task done" is displayed.
8. Turn off the main switch and replace the card with IC card-2.
Turn on the main switch, then downloading will automatically start.
9. When updating card-2 is finished, "Update done" is displayed.
Then, remove the card, turn on the main switch and print the configuration sheet.
Check that controller firmware is successfully updated.

Onboard Sys. 1/2

Onboard Sys. 1/2

*

Update

Updating

Update 1/2 task done

Updating

Update done

Model: Model K-P1		Date: 15-May-01	No.: RG058005
Subject: NIB Firmware History		Prepared by: K. Misugi	
From: Technical Services Dept., GTS Division			
Classification:	<input checked="" type="checkbox"/> Troubleshooting	<input type="checkbox"/> Part information	<input checked="" type="checkbox"/> Action required
	<input type="checkbox"/> Mechanical	<input type="checkbox"/> Electrical	<input type="checkbox"/> Service manual revision
	<input type="checkbox"/> Paper path	<input type="checkbox"/> Transmit/receive	<input type="checkbox"/> Retrofit information
	<input type="checkbox"/> Other ()		

Printer NIB firmware history for the Kir-P1 (G058/G056 model).

Part Number	Version	Production
G0585910D	1.49	February '00 production
G0585910C	1.48	January '00 production
G0585910B	1.47	December '00 production
G0585910A	1.46	First mass production

Note: The above firmware is being used in USA, Europe, and Asia models.

Model: Model K-P1

Date: 15-May-01

No.: RG058005

Descriptions	Version
<p>Firmware modified to correct the following:</p> <ol style="list-style-type: none"> 1. After a job is canceled from a Unix terminal, the NIB cannot print any print jobs sent from the network. 2. Bi-directional communication over TCP port 9100 is not possible. 3. The NIB stopped LPR printing after user "root" deleted all the spooled jobs. 4. The NIB stopped LPR printing following an input timeout. 5. A PS error report ("io error") is sometimes printed out during data communication with the NIB when using AppleTalk from a Mac terminal. <p>Change in Specification: The word "Emulation" was changed to "Printer Language" in the listed information displayed by the <i>info</i> command.</p>	1.49
<p>Firmware modified to correct the following problem.</p> <ol style="list-style-type: none"> 1. LPR printing through Mac OS X server was not possible. (Note that Mac OS X server is not officially supported.) 2. The Web Status Monitor had a spelling mistake. ("decomes" → "becomes") 3. The last page of a print job from Dazel system (TCP port 9100) was not ejected immediately. 4. Disconnecting the Ethernet cable sometimes did not result in a timeout error. 5. TCP/IP setup page in the Web Status Monitor did not check some invalid IP address and subnet mask settings. 6. DHCP lease period became 0 (zero) when Solaris 2.6 was used as a DHCP server. 7. A user name longer than 8 characters caused garbage characters to display in the "prnlog" result. This does not have any adverse influence on print results. 8. Protocol Up/Down settings were sometimes not activated after a change was made. <p>Change in Specification: The NIB logs Timeout error in IPP printing in "syslog".</p>	1.48
<p>Firmware modified to correct the following problem.</p> <ol style="list-style-type: none"> 1. The NIB did not retrieve the infinite lease period setting from the NetWare 5 DHCP server. 2. NIB buffer overflow when Remote Printer Mode was selected. 3. The Web Status Monitor did not have the correct link to IPP Authentication and Password Change pages. 4. Localized wordings appeared after the NIB reset was modified. <p>Change in Specification: None</p>	1.47

Model: Model K-P1		Date: 19-Jun-01	No.: RG058006
Subject: New Model K-P1 China Version		Prepared by: K. Misugi	
From: Technical Services Dept., GTS Division			
Classification:	<input type="checkbox"/> Troubleshooting <input type="checkbox"/> Part information <input type="checkbox"/> Action required <input type="checkbox"/> Mechanical <input type="checkbox"/> Electrical <input checked="" type="checkbox"/> Service manual revision <input type="checkbox"/> Paper path <input type="checkbox"/> Transmit/receive <input type="checkbox"/> Retrofit information <input type="checkbox"/> Other ()		

The new model K-P1 (Kir-P1) China model will be released in the line-up of the model K-P1 (AP2600/AP2600N) series.

This technical bulletin is to inform the differences between the model K-P1 China version and the Europe model. They are listed in order of sections that appear in the service manual.

1. INSTALLATION

1.1.4 POWER REQUIREMENTS

Item	Europe Model	China Model
Input voltage level	220V ~ 240V, 50Hz/60Hz: more than 6A Note: What is mentioned in the manual is wrong. It should be 4.5A for the Europe model also.	220V ~ 240V, 50Hz/60Hz: more than 4.5A

1.3 OPTIONAL UNIT INSTALLATION

Item	Europe Model	China Model
Envelope Feeder	Avialable	Not available
IEEE1394	Available	Not available

6. DETAILED SECTION DESCRIPTIONS

6.8 IEEE1394 INTERFACE

Disregard descriptions on the IEEE1394 interface because it is not available for the China model.

SPECIFICATIONS

1. GENERAL SPECIFICATIONS

Item	Europe Model	China Model
Printer Languages: RPCS	Avialable	Not available
Host Interfaces: IEEE1394	Optional for G056 (G058: must remove NIB)	Not available
Power Source:	220V - 240V, 50/60 Hz: more than 6.0A Note: What is mentioned in the manual is wrong. It should be 4.5A for the Europe model also.	220V - 240V, 50/60 Hz: more than 4.5A

SUPPORTED PAPER SIZES

Europe Model

Paper	Size (W x L)	Paper Trays Main Unit/Option	By-pass Tray	Env. Feeder	Duplex
		Eur/Asia			
8K	267 x 390 mm	N/Y [#]	Y [#]	N	Y
16K SEF	195 x 267 mm	N/Y [#]	Y [#]	N	Y
16K LEF	267 x 195 mm	N/Y [#]	Y [#]	N	Y

China Model

Paper	Size (W x L)	Paper Trays Main Unit/Option	By-pass Tray	Env. Feeder	Duplex
		China model			
8K	267 x 390 mm	Y [#] /Y [#]	Y [#]	N/A	Y
16K SEF	195 x 267 mm	Y [#] /Y [#]	Y [#]	N/A	Y
16K LEF	267 x 195 mm	Y [#] /Y [#]	Y [#]	N/A	Y

N/A: Option not available

Remarks for the above tables:

Y	Supported. The paper size sensor detects the paper size.
Y [#]	Supported. The user has to select the correct paper size for the tray.
Y ^C	Supported. The user has to enter the width and length of the paper.
N	Not supported.

2. SOFTWARE ACCESSORIES

2.1 PRINTER DRIVERS

Item	Europe Model	China Model
Printer Languages: RPCS	Avialable	Not available

3. MACHINE CONFIGURATION

3.1 SYSTEM COMPONENTS

Item	Europe Model	China Model
Envelope Feeder (G556)	Avialable	Not available
IEEE1394 (G561)	Avialable	Not available

4. OPTIONAL EQUIPMENT

4.2 ENVELOPE FEEDER

Not available for the China model.

Model: Model K-P1

Date: 19-Jun-01

No.: RG058006

PARTS CATALOG INFORMATION

Main Unit:

The following parts for the China model are different from the Europe/Asia model.

Index	Europe/Asia Model	China Model	Description
3-27	---	G0588677	Setup Guide - China
3-30	G0531940	G0531970	Operation Panel Ass'y - China
11-18	GZ000003	GZ000004	Power Supply Cord - CHN
23-5	G0565712	G0565713	Controller Board
25-15	G0525211	G0525214	Power Supply Unit - 230V CHN

Envelope Feeder:

The envelope feeder is not available for the China model.

Reissued: 20-Jun-01

Model: Model K-P1	Date: 09-Apr-01	No.: RG058003a
-------------------	-----------------	----------------

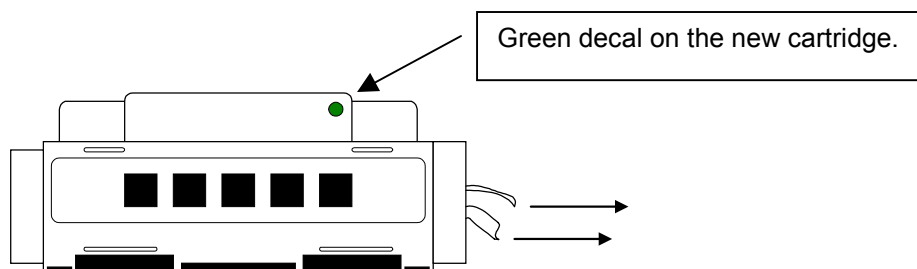
RTB Correction

This page has been added to the original bulletin.

Subject: Dirty Background on Printouts		Prepared by: K. Misugi	
From: Technical Services Dept., GTS Division			
Classification:	<input checked="" type="checkbox"/> Troubleshooting	<input type="checkbox"/> Part information	<input type="checkbox"/> Action required
	<input type="checkbox"/> Mechanical	<input type="checkbox"/> Electrical	<input type="checkbox"/> Service manual revision
	<input type="checkbox"/> Paper path	<input type="checkbox"/> Transmit/receive	<input type="checkbox"/> Retrofit information
	<input type="checkbox"/> Other ()		

The cartridge has been modified from June production so that dirty background will not occur at installation even when the cartridge is tilted.

A green decal is added so the new cartridge can be distinguished from the old type. The same decal is also placed on the supply cartridge, next to the bar-code label on the box.



This RTB is to remind you of the remarks for cartridge installation.

- Place the cartridge on a level surface when removing the sealing tapes on the cartridge.
 - Remove the sealing tapes on the cartridge before turning on the main switch.
 - Once the seals have been removed, do not shake the cartridge.
- Note:** This only applies to cartridge installation and replacement.

Please refer to the original RTB, which was previously issued for the dirty background problem at installation.

Model: K-P1, A-C2, J-P1		Date: 03-Jul-01	No.: RG058007
Subject: Slow Printing from Macintosh		Prepared by: K. Misugi	
From: Technical Services Dept., GTS Division			
Classification:	<input checked="" type="checkbox"/> Troubleshooting <input type="checkbox"/> Mechanical <input type="checkbox"/> Paper path <input type="checkbox"/> Other ()	<input type="checkbox"/> Part information <input type="checkbox"/> Electrical <input type="checkbox"/> Transmit/receive	<input type="checkbox"/> Action required <input type="checkbox"/> Service manual revision <input type="checkbox"/> Retrofit information

SYMPTOM

Depending on network conditions, printing from a Macintosh is very slow.

This symptom occurs in the following machines:

Model K-P1 (Kir-P), Model A-C2 (Adonis-C2), Model J-P1 (Model J).

This occurs in the following conditions:

- Macintosh with PowerPC G3 or G4 processor
- Network: Apple Talk (Ether Talk)
- Network Speed: 100Mbps (100Base fixed)

CAUSE

When the data is transferred at 100Mbps, depending on network conditions, the controller ASIC is not able to receive all data packets and a retry procedure occurs. As a result, print jobs from a Macintosh take a long time to print out.

SOLUTION

Please also see the flow chart attached on the last page.

- 1) Check what type of hub the customer is using.
 If the customer is using a dual speed (10M/100Mbps) hub, go to step 2.
 If the customer is using a 100Base fixed (100Mbps only) hub, go to step 3.
- 2) For the customer using a dual speed hub:
 Set the network (ethernet) speed of the machine to 10Mbps.
 The default setting of the machine is "Auto." This setting can be changed in the "Network Setup" in the user mode "Host Interface" ("Interface Settings" in the "System Settings" for the Model A-C2).

End of procedure for the customer using a dual speed hub.

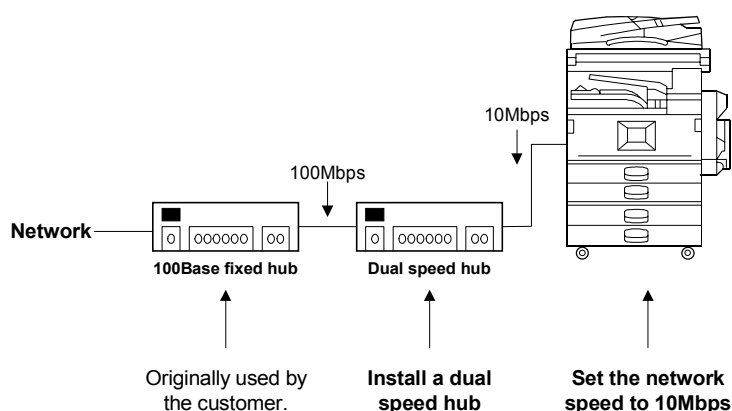
3) For the customer using a 100Base fixed hub:

Temporary solutions:

Perform both of the following:

- a) Set the network (ethernet) speed of the machine to 10Mbps.
The default setting of the machine is "Auto." This setting can be changed in the "Network Setup" in the user mode "Host Interface" ("Interface Settings" in the "System Settings" for the Model A-C2).
- b) Install a dual speed hub between the 100Base fixed hub and the machine.

End of procedure for the customer using a 100Base fixed hub.



Note:

There is almost no effect on actual print time when the machine's network speed setting is changed from 100Mbps to 10Mbps.

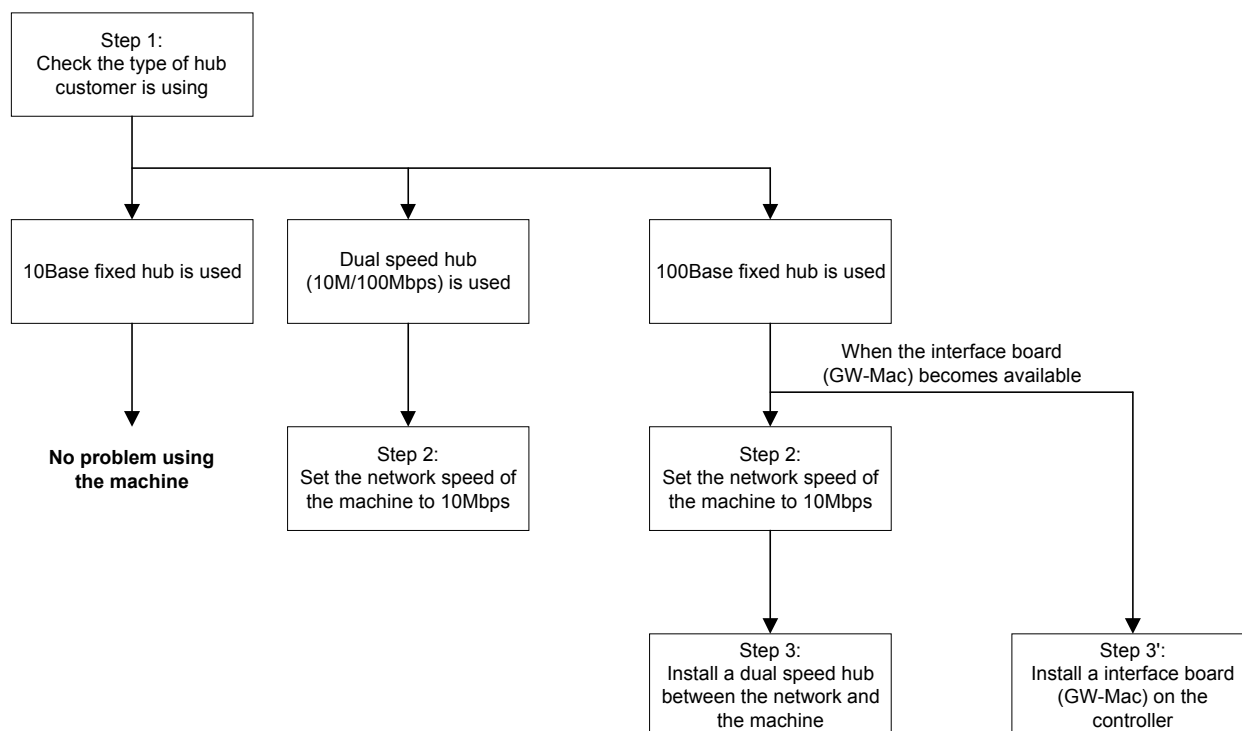
Permanent Countermeasure:

An interface board (GW-MAC) and a DIMM which contains firmware to drive the board will be supplied for attachment to the controller board. With these parts, the machine will work without installing a dual speed hub.

Detailed information on the interface board (GW-MAC) will be announced separately in mid July.

Flow Chart:

When machines are being connected to Macintosh with PowerPC G3/G4 processors with Apple Talk, check the type of hub being used and follow the steps explained below.



Reissued: 07-Aug-01

Model: Model K-P1	Date: 12-Apr-01	No.: RG058001b
-------------------	-----------------	----------------

RTB Reissue

The items in bold italics have been added.

Subject: Printer Controller Firmware History		Prepared by: K. Misugi	
From: Technical Services Dept., GTS Division			
Classification:	<input type="checkbox"/> Troubleshooting	<input type="checkbox"/> Part information	<input checked="" type="checkbox"/> Action required
	<input type="checkbox"/> Mechanical	<input type="checkbox"/> Electrical	<input type="checkbox"/> Service manual revision
	<input type="checkbox"/> Paper path	<input type="checkbox"/> Transmit/receive	<input type="checkbox"/> Retrofit information
	<input type="checkbox"/> Other ()		

Printer controller firmware history for the Kir-P1 (G058/G056).

Part Number	Version	Production
<i>G0565921A</i>	<i>1.11</i>	<i>August '00 production</i>
G0565920J	1.08	US market: February '01 production Europe/Asia: March '01 production
G0565920G	1.06	US market: Does not exist in the field. Europe/Asia: February '01 production
G0565920F	1.05	December '00 production
(G0565920E)	(1.04)	Does not exist in the field
(G0565920D)	(1.03)	Does not exist in the field
G0565920C	1.02	November '00 production
G0565920B	1.01	1 st mass production

Note: The above firmware is being used in USA, Europe, and Asia models.

Please refer to the next page for the descriptions of the latest changes.

Reissued: 07-Aug-01

Model: Model K-P1

Date: 12-Apr-01

No.: RG058001b

Descriptions of the latest changes

Descriptions	Version
<p><i>New feature added in the user mode.</i></p> <p>User mode: Paper size error detection On/Off The machine ignores paper size errors and continues printing.</p> <p>To enable this feature: Press "Enter", "Escape", then "Menu" to enter the user mode. Use the "Up/Down arrow" keys to scroll through the menu listing. "Paper size errors" (Ppr. Size Errors) appears under the "Maintenance" category.</p> <pre> graph LR UserMode[User Mode] --> Counter[Counter (Meter-charge mode must be "On")] UserMode --> SamplePrint[Sample Print (optional HDD required)] UserMode --> LockedPrint[Locked Print (optional HDD required)] UserMode --> PaperInput[Paper Input] UserMode --> ListTestPrint[List/Test Print] UserMode --> Maintenance[Maintenance] UserMode --> System[System] Maintenance --> ImageDensity[Image Density] Maintenance --> Registration[Registration] Maintenance --> HDDFormat[HDD Format (optional HDD required)] Maintenance --> MenuProtect[Menu Protect] Maintenance --> PaperSizeError[Paper Size Error] </pre> <p>Note: "Menu Protect" and "Paper Size Error" appear on the display only when the "Enter" then "Escape" keys are pressed prior to pressing the "Menu" key.</p>	<p>1.11</p>

Reissued: 07-Aug-01

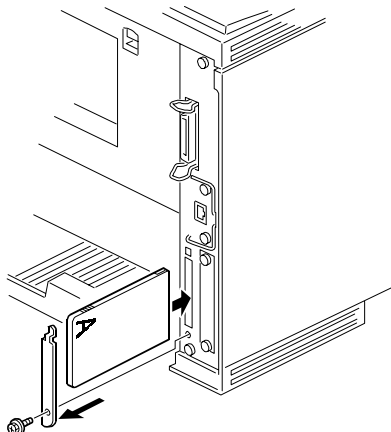
Model: Model K-P1

Date: 12-Apr-01

No.: RG058001b

Firmware Updating Procedure

1. Prepare 2 IC cards with the controller firmware.
2. Turn off the main switch.
3. Remove the IC card slot cover on the rear side of the machine as shown.



4. Insert the IC card-1 and turn on the main switch.
"Onboard Sys. 1/2" is displayed.
5. Press "# Enter."
Note: Make sure that * is displayed.
6. Scroll with the [▲] [▼] key and select "Update."
Press "# Enter" to start downloading.
The "On Line" LED starts blinking and the machine starts to download the program.
(Notice that the * mark disappears as the program is downloaded.)
7. When updating card-1 is finished, "Update 1/2 task done" is displayed.
8. Turn off the main switch and replace the card with IC card-2.
Turn on the main switch, then downloading will automatically start.
9. When updating card-2 is finished, "Update done" is displayed.
Then, remove the card, turn on the main switch and print the configuration sheet.
Check that controller firmware is successfully updated.

Onboard Sys. 1/2

Onboard Sys. 1/2

*

Update

Updating

Update 1/2 task done

Updating

Update done

Reissued: 05-Sep-01

Model: Model K-P1	Date: 15-May-01	No.: RG058005a
-------------------	-----------------	----------------

RTB Correction

The items in bold italics have been corrected or added.

Subject: NIB Firmware History		Prepared by: K. Misugi	
From: Technical Services Dept., GTS Division			
Classification:	<input checked="" type="checkbox"/> Troubleshooting	<input type="checkbox"/> Part information	<input checked="" type="checkbox"/> Action required
	<input type="checkbox"/> Mechanical	<input type="checkbox"/> Electrical	<input type="checkbox"/> Service manual revision
	<input type="checkbox"/> Paper path	<input type="checkbox"/> Transmit/receive	<input type="checkbox"/> Retrofit information
	<input type="checkbox"/> Other ()		

Printer NIB firmware history for the Kir-P1 (G058/G056). Only new modifications are described in this bulletin; see older bulletins for earlier modifications.

Part Number	Version	Production
<i>G0585910F</i>	<i>1.53</i>	<i>June, '00 production</i>
<i>G0585910E</i>	<i>1.51</i>	<i>April, '00 production</i>
G0585910D	1.49	February '00 production
G0585910C	1.48	January '00 production
G0585910B	1.47	December '00 production
G0585910A	1.46	First mass production

Note: The above firmware is being used in USA, Europe, and Asia models.

Reissued: 05-Sep-01

Model: Model K-P1

Date: 15-May-01

No.: RG058005a

Descriptions	Version
<p>Firmware modified to correct the following:</p> <ol style="list-style-type: none">1. The spelling of the display for Job Interrupt in prnlog was changed from "Cancelled" to "Canceled" to conform to Ricoh MIB (standards).2. Added the error message "Can not write NVRAM information". This message appears if an error occurs when saving the printer status data to the NVRAM.	1.53
<p>Firmware modified to correct the following:</p> <ol style="list-style-type: none">1. When 80000000(H) or higher is registered in the Manager IPX Address 2 in the Web Status Monitor, the setting registered is changed to an unspecified one.2. The NIB stops printing if several print jobs are continuously sent to the NIB via the IPP port (SmartNetMonitor for Client), and a print job sent via the standard IPP port may be canceled.3. The USTATUS data may sometimes be lost, depending on the timing of when it is sent during bi-directional communication over TCP/IP port 9100.4. IP address 0.0.0.0 can be set with the ifconfig command.5. The spelling of the message for saving data at logoff was corrected from "datas" to "data". <p>Change in Specification: The length of the ID display for the prnlog command (telnet, rsh, and ftp) was changed from 2 digits to 10 digits.</p>	1.51

Reissued: 09-Oct-01

Model: Model K-P1	Date: 15-May-01	No.: RG058005b
-------------------	-----------------	----------------

RTB Update

The items in bold italics have been added.

Subject: NIB Firmware History		Prepared by: K. Misugi	
From: Technical Services Dept., GTS Division			
Classification:	<input type="checkbox"/> Troubleshooting	<input type="checkbox"/> Part information	<input checked="" type="checkbox"/> Action required
	<input type="checkbox"/> Mechanical	<input type="checkbox"/> Electrical	<input type="checkbox"/> Service manual revision
	<input type="checkbox"/> Paper path	<input type="checkbox"/> Transmit/receive	<input type="checkbox"/> Retrofit information
	<input type="checkbox"/> Other ()		

Printer NIB firmware history for the Kir-P1 (G058/G056 model)

Part Number	Version	Production
<i>G0585910G</i>	<i>1.54</i>	<i>September, '01 production</i>
G0585910F	1.53	June, '01 production
G0585910E	1.51	April, '01 production
G0585910D	1.49	February '01 production
G0585910C	1.48	January '01 production
G0585910B	1.47	December '00 production
G0585910A	1.46	First mass production

Note: The above firmware is being used in USA, Europe, and Asia models.

Descriptions	Version
Firmware modified to correct the following: 1. When using Signature level 2 on a NetWare Server, the printer does not connect to the NetWare Server. 2. When printing out using a CICS application from an IBM mainframe (e.g. AS/390), the printer is only able to output one job due to the lpd protocol that is unique to CICS. 3. When 50 or more lpq/lprm commands (w/arguments) are executed from the time the printer is turned on, the lpd process at the printer side is interrupted and the job is not printed out.	<i>1.54</i>

Model: General (GW Models)		Date: 20-Dec-01	No.: RGene010
Subject: Series Print Mode		Prepared by: K. Misugi	
From: Technical Services Dept., GTS Division			
Classification:	<input checked="" type="checkbox"/> Troubleshooting <input type="checkbox"/> Part information <input type="checkbox"/> Action required <input type="checkbox"/> Mechanical <input type="checkbox"/> Electrical <input type="checkbox"/> Service manual revision <input type="checkbox"/> Paper path <input type="checkbox"/> Transmit/receive <input type="checkbox"/> Retrofit information <input type="checkbox"/> Other ()		

In response to complaints from customers that the intervals between jobs are too long when sent in series, a new service switch has been added to improve performance.

New service switch:

Controller SP mode bit switch 2, bit 1

Series print mode On/Off

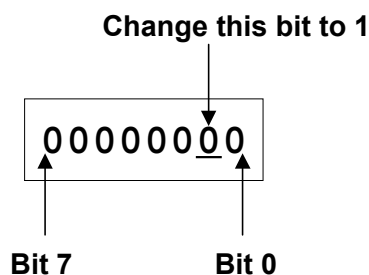
0: Off (default setting)

1: On

This switch has been added to the following GW models:

K-P1 (Kir-P1), J-P1, A-P3 (Adonis-P3), and R-C2 (Russian-C2).

Enter the printer controller service mode, access the bit switch settings display, then change bit 1 of bit switch 2 to "1."



Important: Do not change any other settings. (The default setting is "0.")

Descriptions:

Series print mode Off (default):

The machine starts to feed paper for the next job after the last sheet of the previous job has fed out from the machine.

Series print mode On:

The machine starts to feed paper for the next job before the last sheet of the previous job is fed out.

Model: General (GW Models)

Date: 20-Dec-01

No.: RGene010

Conditions for use:

For the Series Print mode to become effective, jobs must be sent from the same PC, using the same PDL and interface (Ethernet, IEEE1284, IEEE1394).

Limitations:

Series Print mode cannot be used when:

- The above conditions are not met
- Stapling or punching is used
- A user code is used
- Color and black-and-white jobs are mixed (only for color machines)

Remarks:

When enabled, the machine handles the jobs waiting to be printed as a single job.

When the Job Reset key on the operation panel is pressed, all jobs combined by this feature are cancelled.

Applied from the following software versions:

K-P1:	Controller Ver. 1.11
J-P1:	1st mass production of P1b
A-P3:	1st mass production
U-P1:	1st mass production
R-C2:	1st mass production

Reissued: 28-May-02

Model: Model K-P1	Date: 12-Apr-01	No.: RG058001c
-------------------	-----------------	----------------

RTB Reissue

The items in bold italics have been added.

Subject: Printer Controller Firmware History		Prepared by: A.Ishiyama	
From: Technical Services sec. Service Planning Dept.			
Classification:	<input type="checkbox"/> Troubleshooting <input type="checkbox"/> Mechanical <input type="checkbox"/> Paper path <input type="checkbox"/> Other ()	<input type="checkbox"/> Part information <input type="checkbox"/> Electrical <input type="checkbox"/> Transmit/receive	<input checked="" type="checkbox"/> Action required <input type="checkbox"/> Service manual revision <input type="checkbox"/> Retrofit information

Printer controller firmware history for the Kir-P1 (G058/G056 model). Please see the following pages for the change descriptions.

Part Number	Version	Production
<i>G0565921E</i>	<i>1.15</i>	<i>March '02 production</i>
G0565921D	1.14	February '02 production
G0565921C	1.13	December '01 production
G0565921A	1.11	August '01 production
G0565920J	1.08	US market: February '01 production Europe/Asia: March '01 production
G0565920G	1.06	US market: Does not exist in the field. Europe/Asia: February '01 production
G0565920F	1.05	December '00 production
(G0565920E)	(1.04)	Does not exist in the field
(G0565920D)	(1.03)	Does not exist in the field
G0565920C	1.02	November '00 production
G0565920B	1.01	1st mass production

Note: The above firmware is being used on USA, Europe, and Asia models.

Change Descriptions

Descriptions	Version
Firmware modified to correct the following: When printing in duplex, the last odd page is printed onto the reverse side of the last sheet (the machine will now feed all sheets through the duplex unit to ensure the last image appears on the front side). With this version onward, please set controller Bit SW2 bit 4 to "1" (On). Change in Specification: Added Euro Symbol Sets PC858, Latin 9, and Roman 9 for display of the Euro currency symbol.	1.15
Firmware modified to correct the following problem: While downloading PS fonts to a machine with the HDD option installed, the correct PS serial number cannot be output.	1.14
Change in specification: New feature added so that the controller can detect the individual codes in the data headers of a print job sent with both PCL and PS codes, thereby allowing the machine to switch between the PDLs (PCL/PS) accordingly.	1.13

Reissued: 28-May-02

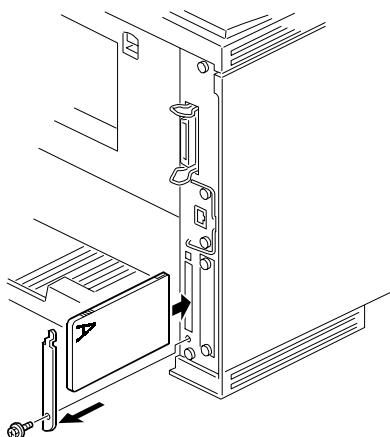
Model: Model K-P1

Date: 12-Apr-01

No.: RG058001c

Firmware Updating Procedure

1. Prepare 2 IC cards with the controller firmware.
2. Turn off the main switch.
3. Remove the IC card slot cover on the rear side of the machine as shown.



4. Insert the IC card-1 and turn on the main switch.
"Onboard Sys. 1/2" is displayed.
5. Press "# Enter."
Note: Make sure that * is displayed.
6. Scroll with the [▲] [▼] key and select "Update."
Press "# Enter" to start downloading.
The "On Line" LED starts blinking and the machine starts to download the program.
(Notice that the * mark disappears as the program is downloaded.)
7. When updating card-1 is finished, "Update 1/2 task done" is displayed.

Onboard Sys. 1/2

Onboard Sys. 1/2

*

Update

Updating

Update 1/2 task done

8. Turn off the main switch and replace the card with IC card-2.
Turn on the main switch, then downloading will automatically start.

Updating

9. When updating card-2 is finished, "Update done" is displayed.
Then, remove the card, turn on the main switch and print the configuration sheet.
Check that controller firmware is successfully updated.

Update done

Reissued: 6-Aug-02

Model: Model K-P1	Date: 03-Apr-01	No.: RG058002a
-------------------	-----------------	----------------

RTB Update

The items in bold italics have been added.

Subject: Printer Engine Firmware History		Prepared by: A. Ishiyama	
From: Technical Services sec. Service Planning Dept.			
Classification:	<input type="checkbox"/> Troubleshooting <input type="checkbox"/> Mechanical <input type="checkbox"/> Paper path <input type="checkbox"/> Other ()	<input type="checkbox"/> Part information <input type="checkbox"/> Electrical <input type="checkbox"/> Transmit/receive	<input checked="" type="checkbox"/> Action required <input type="checkbox"/> Service manual revision <input type="checkbox"/> Retrofit information

Printer engine firmware history for model K-P1 (G058/G056).

Part Number	Version	Production
<i>G0525172J</i>	<i>1.12</i>	<i>June '01</i>
G0525172H	1.11	February '01
G0525172G	1.10	(does not exist in the field)
G0525172F	1.09	December '00
G0525172E	1.08	November '00
G0525172D	1.07	Beginning of mass production

Note: The above firmware is being used in USA, Europe, and Asia models.

Change Descriptions

Descriptions	Version
<i>Firmware modified to correct the following:</i> <ul style="list-style-type: none"> <i>When printing on postcards under lower temperature conditions (lower than 15 °C), charge and development settings have been adjusted to prevent poor image output. In addition, in order for postcard printing to make the above adjustment process time, the paper transport process has also been adjusted to make a wider interval than normal size paper.</i> 	<i>1.12</i>

Reissued: 6-Aug-02

Model: Model K-P1	Date: 15-May-01	No.: RG058005c
-------------------	-----------------	----------------

RTB Update

The items in bold italics have been added.

Subject: NIB Firmware History		Prepared by: A. Ishiyama	
From: Technical Services sec. Service Planning Dept.			
Classification:	<input type="checkbox"/> Troubleshooting <input type="checkbox"/> Mechanical <input type="checkbox"/> Paper path <input type="checkbox"/> Other ()	<input type="checkbox"/> Part information <input type="checkbox"/> Electrical <input type="checkbox"/> Transmit/receive	<input checked="" type="checkbox"/> Action required <input type="checkbox"/> Service manual revision <input type="checkbox"/> Retrofit information

Printer NIB firmware history for the model K-P1 (G058/G056).

Part Number	Version	Production
<i>G0585910G</i>	<i>1.56</i>	<i>For service parts*</i>
G0585910G	1.54	September, '01 production
G0585910F	1.53	June, '01 production
G0585910E	1.51	April, '01 production
G0585910D	1.49	February '01 production
G0585910C	1.48	January '01 production
G0585910B	1.47	December '00 production
G0585910A	1.46	First mass production

****: This change has only been applied to Service Parts, as this model has been discontinued.***

Note: The above firmware is being used on NA, Europe, and Asia models.

Descriptions	Version
<i>Firmware modified to correct the following:</i> <i>1. SNMP vulnerability</i> <i>SNMP security vulnerabilities reported by CERT on Feb.12, 2002 have been confirmed and fixed through the PROTON c06-snmpv1 test suite.</i> <i>-CERT: http://www.cert.org/advisories/CA-2002-03.html</i> <i>-PROTON c06-snmpv1 test Suite:</i> <i>http://www.ee.oulu.fi/research/ouspg/protos/testing/c06/snmpv1/</i> <i>2. Cannot connect to Novell NDS (GFPR No. RC02010007)</i> <i>The nearest NetWare Server informs the NIB of the alternate NetWare Server address, where the NDS replica is stored. However, the NIB is unable to interpret the message.</i> <i>3. Firmware corrected so that the LCD displays "Printer is not ready" when the printer is not yet in Ready status, e.g. when the cover is open.</i>	1.56

Reissued: 27-Dec-02

Model: Model K-P1	Date: 12-Apr-01	No.: RG058001d
-------------------	-----------------	----------------

RTB Reissue

The items in bold italics have been added.

Subject: Printer Controller Firmware History		Prepared by: A.Ishiyama	
From: Technical Services Sec. Service Planning Dept.			
Classification:	<input type="checkbox"/> Troubleshooting <input type="checkbox"/> Mechanical <input type="checkbox"/> Paper path <input type="checkbox"/> Other ()	<input type="checkbox"/> Part information <input type="checkbox"/> Electrical <input type="checkbox"/> Transmit/receive	<input checked="" type="checkbox"/> Action required <input type="checkbox"/> Service manual revision <input type="checkbox"/> Retrofit information

The following is the printer controller firmware history for the model K-P1 (G058/G056 model). Please see the following pages for the changed descriptions.

Part Number	Version	Production
<i>G0565921F</i>	<i>1.17</i>	<i>December '02 production</i>
G0565921E	1.15	March '02 production
G0565921D	1.14	February '02 production
G0565921C	1.13	December '01 production
G0565921A	1.11	August '01 production
G0565920J	1.08	US market: February '01 production Europe/Asia: March '01 production
G0565920G	1.06	US market: Does not exist in the field. Europe/Asia: February '01 production
G0565920F	1.05	December '00 production
(G0565920E)	(1.04)	Does not exist in the field
(G0565920D)	(1.03)	Does not exist in the field
G0565920C	1.02	November '00 production
G0565920B	1.01	1 st mass production

Note: The above firmware is being used in USA, European, and Asian models.
Firmware version 1.16 has been skipped, and therefore, it will not be released.

Change Descriptions

Descriptions	Version
<i>Firmware modified to correct the following:</i> <i>1. Form Lines value (under the PCL Menu) changes after rebooting the machine. (GFPR# RA02090003)</i> <i>2. Response to the PJI INFO CONFIG command does not include the serial number.</i> <i>3. The print job may stop during the processing of the file when using "INFICO". (GFPR# RE02090012)</i>	<i>1.17</i>

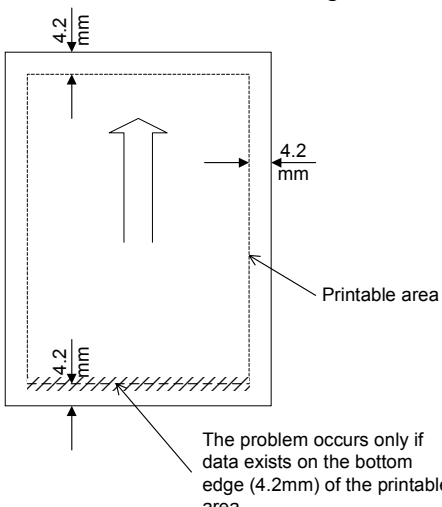
Reissued: 27-Dec-02

Model: Model K-P1	Date: 12-Apr-01	No.: RG058001d
-------------------	-----------------	----------------

Descriptions	Version
<p>Firmware modified to correct the following: When printing in duplex, the last odd page is printed onto the reverse side of the last sheet (machine will now feed all sheets through the duplex unit to ensure the last image appears on the front side). With this version onward, please set controller Bit SW2 bit 4 to "1" (On).</p> <p>Change in Specification: Added Euro Symbol Sets PC858, Latin 9, and Roman 9 for display of the Euro currency symbol.</p>	1.15
<p>Firmware modified to correct the following problem: While downloading PS fonts to a machine with the HDD option installed, the correct PS serial number cannot be output.</p>	1.14
<p>Change in specification: New feature added so that the controller can detect the individual codes in the data headers of a print job sent with both PCL and PS codes, thereby allowing the machine to switch between the PDLs (PCL/PS) accordingly.</p>	1.13
<p>New feature added in the user mode: User mode: Paper size error detection On/Off The machine ignores paper size errors and continues printing.</p> <p>To enable this feature: Press "Enter", "Escape", then "Menu" to enter the user mode. Use the "Up/Down arrow" keys to scroll through the menu listing. "Paper size errors" (Ppr. Size Errors) appears under the "Maintenance" category.</p> <pre> graph LR UserMode[User Mode] --> Counter[Counter (Meter-charge mode must be "On")] UserMode --> SamplePrint[Sample Print (optional HDD required)] UserMode --> LockedPrint[Locked Print (optional HDD required)] UserMode --> PaperInput[Paper Input] UserMode --> ListTestPrint[List/Test Print] UserMode --> Maintenance[Maintenance] UserMode --> System[System] Maintenance --> ImageDensity[Image Density] Maintenance --> Registration[Registration] Maintenance --> HDDFormat[HDD Format (optional HDD required)] Maintenance --> MenuProtect[Menu Protect] Maintenance --> PaperSizeError[Paper Size Error] </pre> <p>Note: "Menu Protect" and "Paper Size Error" appear on the display only when the "Enter" then "Escape" keys are pressed prior to pressing the "Menu" key.</p>	1.11

Reissued: 27-Dec-02

Model: Model K-P1	Date: 12-Apr-01	No.: RG058001d
-------------------	-----------------	----------------

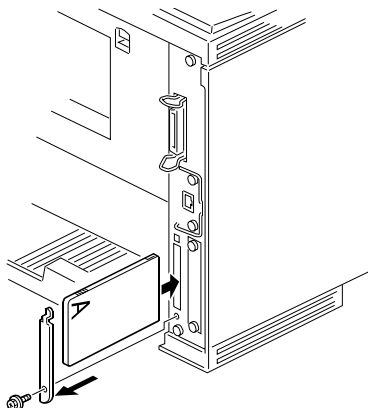
Descriptions	Version
<p>Firmware modified to correct the following problem:</p> <ol style="list-style-type: none"> Modified so the machine can be used with Axis print servers. Modified to correct Polish and Portuguese wording errors. 	1.08
<p>Firmware modified to correct the following problem:</p> <p>In rare cases with graphic images, a dark band appears or part of the image becomes black on printouts.</p>	1.06
<ol style="list-style-type: none"> Firmware modified to improve print quality when image data is printed using the PCL6 driver. Note: This occurs only in the following condition. <ul style="list-style-type: none"> When printing image data When using the PCL6 driver New feature added in the user mode. “Curl Prevention” mode is added in the user mode. (Curl Prevention: User mode/ Maintenance) Please note that the function of this mode is the same as the “Curl Control” in the printer engine service mode. It lowers the fusing temperature to prevent paper from curling. Advise customer to use this mode when paper jam occurs during duplex rear side printing. Note: When this mode is switched on, the “Curl Control” in the service mode is also switched on. 	1.05
<p>Firmware modified to correct the following problem.</p> <p>Symptom: In PCL printing, if data exists over the bottom edge of the printable area, the machine freezes, displaying "Processing" and operation will no longer be possible.</p> <p>Condition: Printer driver is <u>not</u> being used Print data exists on the <u>bottom edge</u> of the printable area (at 4.2mm)</p>  <p>Action: Update the controller firmware.</p>	1.05
Firmware modified to make corrections in the German wordings.	1.02

Reissued: 27-Dec-02

Model: Model K-P1	Date: 12-Apr-01	No.: RG058001d
-------------------	-----------------	----------------

Firmware Updating Procedure

1. Prepare 2 IC cards with the controller firmware.
2. Turn off the main switch.
3. Remove the IC card slot cover on the rear side of the machine as shown.



4. Insert the IC card-1 and turn on the main switch.
"Onboard Sys. 1/2" is displayed.
5. Press "# Enter."
Note: Make sure that * is displayed.
6. Scroll with the [▲] [▼] key and select "Update."
Press "# Enter" to start downloading.
The "On Line" LED starts blinking and the machine starts to download the program.
(Notice that the * mark disappears as the program is downloaded.)
7. When updating card-1 is finished, "Update 1/2 task done" is displayed.
8. Turn off the main switch and replace the card with IC card-2.
Turn on the main switch, then downloading will automatically start.
9. When updating card-2 is finished, "Update done" is displayed.
Then, turn off the main switch, remove the card, turn on the main switch back and print the configuration sheet.
Check that controller firmware is successfully updated.

Onboard Sys. 1/2

Onboard Sys. 1/2

*

Update

Updating

Update 1/2 task done

Updating

Update done

Model: General RTB		Date: 27-Dec-02	No.: RGene012
Subject: GW Products - Hardware Ethernet Problem		Prepared by: T. Itoh	
From: Technical Services Sec. Service Planning Dept.			
Classification:	<input checked="" type="checkbox"/> Troubleshooting <input type="checkbox"/> Part information <input type="checkbox"/> Action required <input type="checkbox"/> Mechanical <input type="checkbox"/> Electrical <input type="checkbox"/> Service manual revision <input type="checkbox"/> Paper path <input type="checkbox"/> Transmit/receive <input type="checkbox"/> Retrofit information <input type="checkbox"/> Other ()		

SYMPTOM

When the main switch is turned on, the error message "Hardware Ethernet Problem" may be displayed under the following condition on the GW-based products.

Conditions:

- Network speed on the hub has been set to 100Mbps fixed with full duplex, and
- Length of network cable is too long (60 m or more) or the cable quality is not good enough

CAUSE

When the main switch is turned on, the machine performs a loop-back test. If the cable length is too long or its quality is not good enough, the damping factor for the data transmission becomes worse, and the machine incorrectly detects an error during this test. This happens only when the network speed is set to 100Mbps fixed with full duplex. The PHY chip used on the controller board causes this.

SOLUTION

- Temporary Solution -

- Set the network speed on the hub to Auto-sensing,
- Use a shorter cable or a cable with a lower damping factor, or
- Disconnect the network cable and power on the printer; then, set the cable after the printer comes to the ready condition.

- Permanent Solution -

The controller firmware will be modified to avoid the incorrect detection of this error message. The schedule of firmware modification is as follows.

Product Type	Product	Firmware Modification Cut-in Schedule
Fax	Kaiser 3	at next modification
Printer	Model-K P1	
	Model-K P2	
	Model-J P1b	
	Model-J CF	
	Model-U P1e	'03 January production run
	Model-A P3	'03 March production run
MFP	Model-R C2	at next modification run
	Model-A C2	
	Model-M C1	
	Model-U C1	'03 February production run

NOTE:

Firmware will be posted in the usual manner when it is released.

Reissued: 13-Mar-03

Model: Model K-P1	Date: 12-Apr-01	No.: RG058001e
-------------------	-----------------	----------------

RTB Reissue

The items in bold italics have been added.

Subject: Printer Controller Firmware History		Prepared by: A.Ishiyama	
From: Technical Services Sec. Service Planning Dept.			
Classification:	<input type="checkbox"/> Troubleshooting <input type="checkbox"/> Mechanical <input type="checkbox"/> Paper path <input type="checkbox"/> Other ()	<input type="checkbox"/> Part information <input type="checkbox"/> Electrical <input type="checkbox"/> Transmit/receive	<input checked="" type="checkbox"/> Action required <input type="checkbox"/> Service manual revision <input type="checkbox"/> Retrofit information

The following is the printer controller firmware history for the model K-P1 (G058/G056 model). Please see the following pages for the changed descriptions.

Part Number	Version	Production
<i>G0565921G</i>	<i>1.18</i>	<i>March '03 production</i>
G0565921F	1.17	December '02 production
G0565921E	1.15	March '02 production
G0565921D	1.14	February '02 production
G0565921C	1.13	December '01 production
G0565921A	1.11	August '01 production
G0565920J	1.08	US market: February '01 production Europe/Asia: March '01 production
G0565920G	1.06	US market: Does not exist in the field. Europe/Asia: February '01 production
G0565920F	1.05	December '00 production
(G0565920E)	(1.04)	Does not exist in the field
(G0565920D)	(1.03)	Does not exist in the field
G0565920C	1.02	November '00 production
G0565920B	1.01	1 st mass production

Note: The above firmware is being used in USA, European, and Asian models.
Firmware version 1.16 has been skipped, i.e. will not be released.

Reissued: 13-Mar-03

Model: Model K-P1	Date: 12-Apr-01	No.: RG058001e
-------------------	-----------------	----------------

Change Descriptions

Descriptions	Version
<p>The following have been fixed; <PCL></p> <ol style="list-style-type: none"> Barcodes are sometimes separated when printed out (GFPR#RE03010016). Supports mixed binding orientations with duplex jobs using cover sheets (GFPR# RC02080003). The downloaded PCL Barcode fonts are not printed correctly on the PCL font list (GFPR#RC03010004). The following problems with CAD print files have been fixed: <ul style="list-style-type: none"> - Modified the number of available pen selections from 8 to 256 when BitSw #3-3 is ON (GFPR# RE02030003). - The "null" character is ignored when it is included in HP/GL2 data. (GFPR# RE02050016). - The status flag for the bold selection command is refreshed when the command is selected in HP/GL2 data (GFPR# RE02050016). Duplex face settings are not applied correctly when specified with PCL commands (GFPR#: RC02120014). Selecting a HDD font or DIMM font may reduce the available memory. Note: SAP Barcode & OCR printing are supported from this version, fixing the above symptom. 	1.18
<p>Firmware modified to correct the following:</p> <ol style="list-style-type: none"> Form Lines value (under PCL Menu) change after rebooting the Machine. (GFPR# RA02090003) Response to PJI INFO CONFIG command does not include serial number. The print may stop during the processing of the file when using "INFICO". (GFPR# RE02090012) 	1.17
<p>Firmware modified to correct the following: When printing in duplex, the last odd page is printed onto the reverse side of the last sheet (machine will now feed all sheets through the duplex unit to ensure the last image appears on the front side). With this version onward, please set controller Bit SW2 bit 4 to "1" (On).</p> <p>Change in Specification: Added Euro Symbol Sets PC858, Latin 9, and Roman 9 for display of the Euro currency symbol.</p>	1.15
<p>Firmware modified to correct the following problem: While downloading PS fonts to a machine with the HDD option installed, the correct PS serial number cannot be output.</p>	1.14
<p>Change in specification: New feature added so that the controller can detect the individual codes in the data headers of a print job sent with both PCL and PS codes, thereby allowing the machine to switch between the PDLs (PCL/PS) accordingly.</p>	1.13

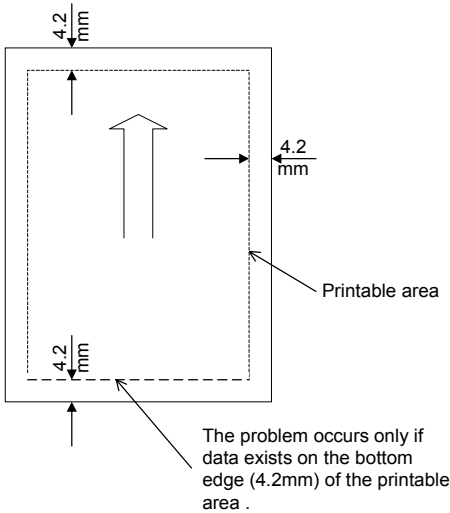
Reissued: 13-Mar-03

Model: Model K-P1	Date: 12-Apr-01	No.: RG058001e
-------------------	-----------------	----------------

Descriptions	Version
<p>New feature added in the user mode: User mode: Paper size error detection On/Off The machine ignores paper size errors and continues printing.</p> <p>To enable this feature: Press “Enter”, “Escape”, then “Menu” to enter the user mode. Use the “Up/Down arrow” keys to scroll through the menu listing. “Paper size errors” (Ppr. Size Errors) appears under the “Maintenance” category.</p> <pre> graph LR UserMode[User Mode] --> Counter[Counter (Meter-charge mode must be "On")] UserMode --> SamplePrint[Sample Print (optional HDD required)] UserMode --> LockedPrint[Locked Print (optional HDD required)] UserMode --> PaperInput[Paper Input] UserMode --> ListTestPrint[List/Test Print] UserMode --> Maintenance[Maintenance] UserMode --> System[System] Maintenance --> ImageDensity[Image Density] Maintenance --> Registration[Registration] Maintenance --> HDDFormat[HDD Format (optional HDD required)] Maintenance --> MenuProtect[Menu Protect] Maintenance --> PaperSizeError[Paper Size Error] </pre> <p>Note: “Menu Protect” and “Paper Size Error” appear on the display only when the “Enter” then “Escape” keys are pressed prior to pressing the “Menu” key.</p>	1.11
<p>Firmware modified to correct the following problem:</p> <ol style="list-style-type: none"> Modified so the machine can be used with Axis print servers. Modified to correct Polish and Portuguese wording errors. 	1.08
<p>Firmware modified to correct the following problem: In rare cases with graphic images, a dark band appears or part of the image becomes black on printouts.</p>	1.06
<ol style="list-style-type: none"> Firmware modified to improve print quality when image data is printed using the PCL6 driver. Note: This occurs only in the following condition. <ul style="list-style-type: none"> When printing image data When using the PCL6 driver New feature added in the user mode. “Curl Prevention” mode is added in the user mode. (Curl Prevention: User mode/ Maintenance) Please note that the function of this mode is the same as the “Curl Control” in the printer engine service mode. It lowers the fusing temperature to prevent paper from curling. Advise customer to use this mode when paper jam occurs during duplex rear side printing. Note: When this mode is switched on, the “Curl Control” in the service mode is also switched on. 	1.05

Reissued: 13-Mar-03

Model: Model K-P1	Date: 12-Apr-01	No.: RG058001e
-------------------	-----------------	----------------

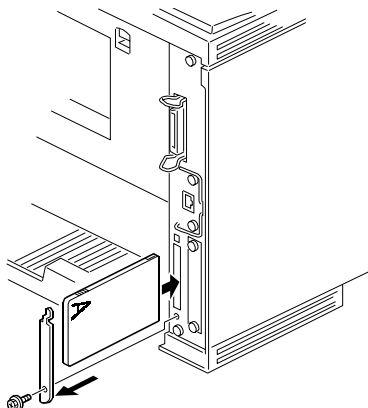
Descriptions	Version
<p>Firmware modified to correct the following problem.</p> <p>Symptom: In PCL printing, if data exists over the bottom edge of the printable area, the machine freezes, displaying "Processing" and operation will no longer be possible.</p> <p>Condition: Printer driver is <u>not</u> being used Print data exists on the <u>bottom edge</u> of the printable area (at 4.2mm)</p>  <p>The problem occurs only if data exists on the bottom edge (4.2mm) of the printable area .</p> <p>Action: Update the controller firmware.</p>	1.05
Firmware modified to make corrections in the German wordings.	1.02

Reissued: 13-Mar-03

Model: Model K-P1	Date: 12-Apr-01	No.: RG058001e
-------------------	-----------------	----------------

Firmware Updating Procedure

1. Prepare 2 IC cards with the controller firmware.
2. Turn off the main switch.
3. Remove the IC card slot cover on the rear side of the machine as shown.



4. Insert the IC card-1 and turn on the main switch.
"Onboard Sys. 1/2" is displayed.
5. Press "# Enter."
Note: Make sure that * is displayed.
6. Scroll with the [▲] [▼] key and select "Update."
Press "# Enter" to start downloading.
The "On Line" LED starts blinking and the machine starts to download the program.
(Notice that the * mark disappears as the program is downloaded.)
7. When updating card-1 is finished, "Update 1/2 task done" is displayed.
8. Turn off the main switch and replace the card with IC card-2.
Turn on the main switch, then downloading will automatically start.
9. When updating card-2 is finished, "Update done" is displayed.
Then, turn off the main switch, remove the card, turn on the main switch back and print the configuration sheet.
Check that controller firmware is successfully updated.

Onboard Sys. 1/2

Onboard Sys. 1/2

*

Update

Updating

Update 1/2 task done

Updating

Update done

Reissued: 22-Sep-03

Model: Model K-P1	Date: 03-Apr-01	No.: RG058002b
-------------------	-----------------	----------------

RTB Update

The items in bold italics have been added.

Subject: Printer Engine Firmware History		Prepared by: T.Shintani	
From: 1st Technical Support Sec. Service Support Dept.			
Classification:	<input type="checkbox"/> Troubleshooting <input type="checkbox"/> Part information <input checked="" type="checkbox"/> Action required		
	<input type="checkbox"/> Mechanical <input type="checkbox"/> Electrical <input type="checkbox"/> Service manual revision		
	<input type="checkbox"/> Paper path <input type="checkbox"/> Transmit/receive <input type="checkbox"/> Retrofit information		
	<input type="checkbox"/> Other ()		

This RTB announces the printer engine firmware history for model K-P1 (G058/G056 model).

Part Number	Version	Production
<i>G0525172K</i>	<i>1.13</i>	<i>October '03</i>
G0525172J	1.12	June '01
G0525172H	1.11	February '01
G0525172G	1.10	(does not exist in the field)
G0525172F	1.09	December '00
G0525172E	1.08	November '00
G0525172D	1.07	Beginning of mass production

Note: The above firmware is being used in USA, Europe, and Asia models.

Change Descriptions

Descriptions	Version
<i>Firmware modified to correct the following:</i> <ul style="list-style-type: none"> <i>Improved management of toner end function.</i> <i>Incorrect detection when the fusing unit isn't installed.</i> <i>The motor of the optional 1 bin tray does not stop when a paper jam occurs.</i> 	<i>1.13</i>
Firmware modified to correct the following: <ul style="list-style-type: none"> When printing on postcard under lower temperature condition (lower than 15 °C), charge and development settings have been adjusted to prevent from poor image output. In addition, in order for postcard printing to make the above adjustment process time, paper transport process has also been adjusted to make wider interval than normal size paper. 	1.12
No changes from previous version (only carryover items for Japanese domestic version).	1.11

Reissued: 22-Sep-03

Model: Model K-P1	Date: 03-Apr-01	No.: RG058002b
-------------------	-----------------	----------------

Descriptions	Version
Firmware modified to correct the following: <ul style="list-style-type: none">• The machine was showing SC 546 when the symptom was SC 541.• Duplex backside (leading edge) registration adjustment was applied only to bypass feeding. Firmware modified so that the adjustment is applied to all paper source.	1.09
The engine process timing is changed to further ensure that waste toner tank overflow does not occur when the machine is used under low duty.	1.08

Model: Model K-P1		Date: 19-Apr-05	No.: RG058008
Subject: Controller NVRAM		Prepared by: A. Ishiyama	
From: 1st Technical Support Sec. Service Support Dept.			
Classification:	<input type="checkbox"/> Troubleshooting <input checked="" type="checkbox"/> Part information <input type="checkbox"/> Action required <input type="checkbox"/> Mechanical <input type="checkbox"/> Electrical <input type="checkbox"/> Service manual revision <input type="checkbox"/> Paper path <input type="checkbox"/> Transmit/receive <input type="checkbox"/> Retrofit information <input type="checkbox"/> Other ()		

Important Note: Blank NVRAM Service Parts

When you replace the controller NVRAM in the field, use the part shown below. This part is already listed in the Parts Catalog.

Model	Part No.	Description	IC No.	Product Code	Parts Catalog Information	
					Page	Index
K-P1	14075335	RAM – STK12C68-P55	IC27	G056/G058	27, 29	119
K-P2	14075497	RAM – FM1808-120-P	IC54	G073	27, 29	124
				G074	31, 33	121
K-P3	14075856	RAM – FM18L08-70-P	IC68	G091	29, 35	126
K-P4	14076465	RAM:FM25L256-PG(REV.AG)	IC5	G116	40, 45	130
C-P1	14075856	RAM – FM18L08-70-P	IC68	G094	31, 37	122
				G095	41, 47	126
C-P2b	14075856	RAM – FM18L08-70-P	IC68	G112	53, 57	121
C-P2c	14076465	RAM:FM25L256-PG(REV.AG)	IC5	G113	60, 65	130

- This is **completely blank** NVRAM. When you get this part from the Parts Center, it does **not** have a value of “0”.
- After you install this NVRAM and turn the power OFF/ON, the machine will put a value of “0” inside the NVRAM.

IMPORTANT: When you install this NVRAM, make sure it is a completely new service part. **DO NOT** install the NVRAM if it was already used. If you do, machine problems can occur.