

Model: Model K-P2		Date: 6-Sep-02	No.: MG073001
Modified Article: Paper Exit Cover		Prepared by: A. Ishiyama	
From: Technical Services sec. Service Planning Dept.			
Reason for Modification:	<input type="checkbox"/> Parts catalog correction <input type="checkbox"/> To facilitate assembly <input type="checkbox"/> Part standardization	<input type="checkbox"/> Vendor change <input checked="" type="checkbox"/> To improve reliability <input type="checkbox"/> Other	<input type="checkbox"/> To meet standards ()
Modification Schedule:	From April 2002 production run		

The Paper Exit Cover has been modified to ensure that it does not open during printing, which can happen if the cover is not closed correctly.

Note: This applies to all models: K-P2:G073/G074.

Old part number	New part number	Description	Q'ty	Int	Page	Index	Note
G0521505	G0521512	Paper Exit Cover	1	X/O	3	35	

Model: Model K-P2		Date: 7-Jan-03	No.: MG073002
Modified Article: Font ROM on the Controller Board		Prepared by: A. Ishiyama	
From: Technical Services sec. Service Planning Dept.			
Reason for Modification:	<input type="checkbox"/> Parts catalog correction <input type="checkbox"/> To facilitate assembly <input type="checkbox"/> Part standardization	<input type="checkbox"/> Vendor change <input checked="" type="checkbox"/> To improve reliability <input type="checkbox"/> Other	<input type="checkbox"/> To meet standards ()
Modification Schedule:	From December 2002 production run		

The font ROM on the controller board has been modified in order to print the Euro currency symbol.

Please refer to RTB Rgene011 for details.

Note: This applies to all models: K-P2: G073/G074 models.

Old part number	New part number	Description	Q'ty	Int	Page	Index	Note
G0735712N	G0735713	Controller Board – G073 Model	1 → 1	X/O	23	5	
G0745712N	G0745713	Controller Board – G074 Model	1 → 1	X/O	23	5	
G0565901		Mask ROM - PCL	1 → 0	X/O	29	1	
	G0565903	Mask ROM – PCL/Euro	0 → 1				

Model: Model K-P2		Date: 10-Sep-03	No.: MG073003
Modified Article: Controller Board		Prepared by: A. Ishiyama	
From: 1st Technical Support Sec. Service Support Dept.			
Reason for Modification:	<input type="checkbox"/> Parts catalog correction <input type="checkbox"/> To facilitate assembly <input checked="" type="checkbox"/> Part standardization	<input type="checkbox"/> Vendor change <input type="checkbox"/> To improve reliability <input type="checkbox"/> Other	<input type="checkbox"/> To meet standards ()
Modification Schedule:	From February 2003 production		

Old part number	New part number	Description	Q'ty	Int	Page	Index	Note
G0735713B	G0735714	Controller Board - G073 Model	1→1	X/O	23	5	
14075678		USB - KL5KUSB200CCFP	1→1	X/O	29	128	
	→14076060	USB2.0 - KL5KUSB200HCFP					
G0695911B		IC - U2PCI-KL5BUDV002CCFP	1→1	X/O	29	2	
	→14076061	IC - USB2.0 I/F : KL5BUDV002ECFP					
G0745713B	G0745714	Controller Board - G073 Model	1→1	X/O	23	5	
14075678		USB - KL5KUSB200CCFP	1→1	X/O	29	128	
	→14076060	USB2.0 - KL5KUSB200HCFP					
G0695911B		IC - U2PCI-KL5BUDV002CCFP	1→1	X/O	29	2	
	→14076061	IC - USB2.0 I/F : KL5BUDV002ECFP					

Reissued: 2-Oct-03

Model: Model K-P2	Date: 22-Sep-03	No.: MG073004a
-------------------	-----------------	----------------

MB Correction

The items in bold italics have been corrected or added.

Modified Article: Base - Manual Feed : adhesion		Prepared by: T.Shintani	
From: 1st Technical Support Sec. Service Support Dept.			
Reason for Modification:	<input type="checkbox"/> Parts catalog correction <input type="checkbox"/> To facilitate assembly <input checked="" type="checkbox"/> Part standardization	<input type="checkbox"/> Vendor change <input checked="" type="checkbox"/> To improve reliability <input type="checkbox"/> Other	<input type="checkbox"/> To meet standards ()
Modification Schedule:	From September 2002 production		

Base - Manual Feed (Bypass Tray) in the K-P3 has been modified to prevent paper feed noise during developing. The same change was also applied to these products: K-P1/K-P2.

Note: This applies to all models: K-P2, G073/G074 as well as K-P1, G056/G058.

Old part number	New part number	Description	Q'ty	Int	Page	Index	Note
G0523273B	G0763273	Base - Manual Feed : Adhesion	1→1	X/O	3	25	1
	G0763281	Supporting Plate:Base:ManualFE	0→1		3	41	1
	G0763282	Supporting Plate:Base:ManualFE	0→1		3	42	1
	G04503008B 04503008B	Tapping Screw – M3×8	0→1		3	101	1

Note1: The above parts should be replaced together as a set.

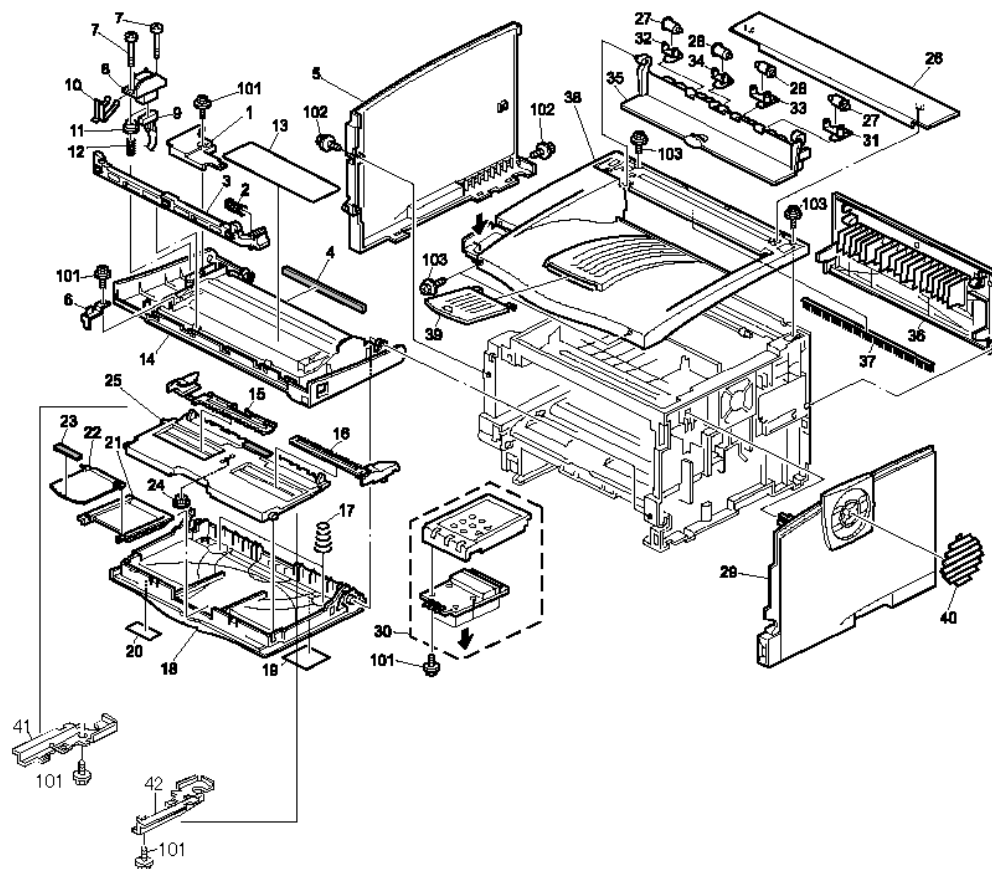
Reissued: 2-Oct-03

Model: Model K-P2

Date: 22-Sep-03

No.: MG073004a

1.EXTERIOR (G073/G074)



Model: Model K-P2		Date: 22-Sep-03	No.: MG073005
Modified Article: Separation Pad - Bypass		Prepared by: T.Shintani	
From: 1st Technical Support Sec. Service Support Dept.			
Reason for Modification:	<input type="checkbox"/> Parts catalog correction <input type="checkbox"/> To facilitate assembly <input type="checkbox"/> Part standardization	<input type="checkbox"/> Vendor change <input checked="" type="checkbox"/> To improve reliability <input type="checkbox"/> Other	<input type="checkbox"/> To meet standards ()
Modification Schedule:	From October 2002 production		

Separation Pad - Bypass has been modified. When using special paper in the Japanese market, the paper does not pass correctly and the tip part of the paper bends

Note: This applies to all models K-P2:G073/G074 as well as:K-P1:G056/G058.

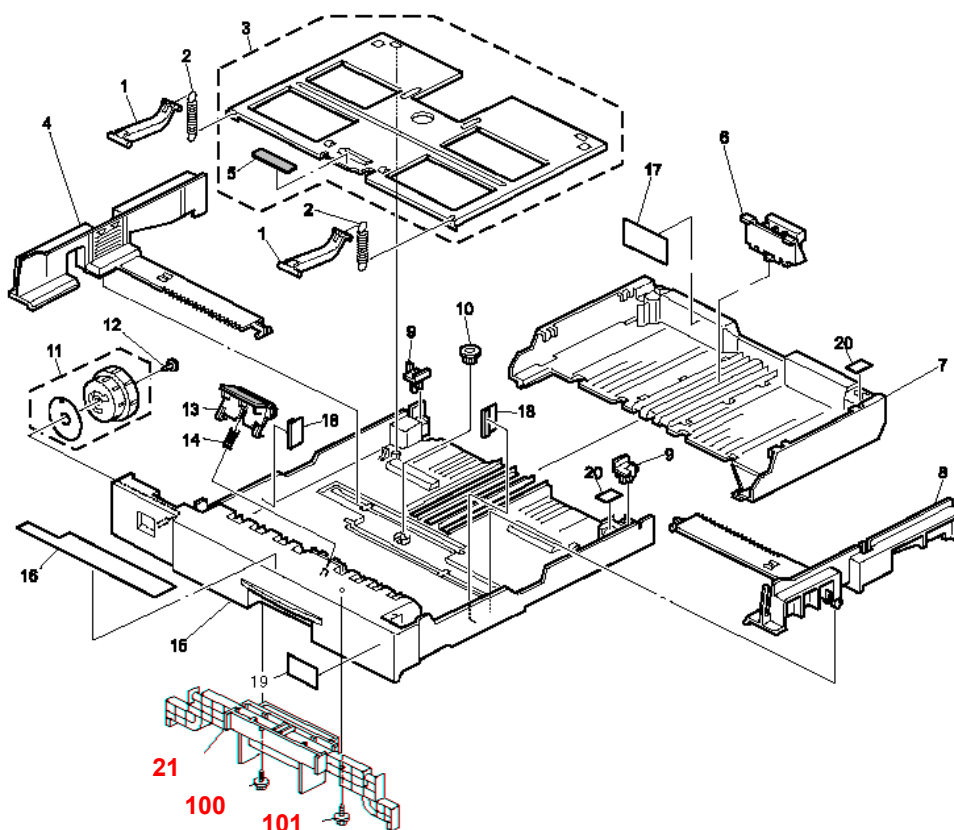
Old part number	New part number	Description	Q'ty	Int	Page	Index	Note
G0523290F	G0763290	Separation Pad - Bypass	1→1	X/O	7	13	

Model: Model K-P2		Date: 26-Sep-03	No.: MG073006
Modified Article: Paper Tray Ass'y		Prepared by: T.Shintani	
From: 1st Technical Support Sec. Service Support Dept.			
Reason for Modification:	<input type="checkbox"/> Parts catalog correction <input type="checkbox"/> To facilitate assembly <input type="checkbox"/> Part standardization	<input type="checkbox"/> Vendor change <input checked="" type="checkbox"/> To improve reliability <input type="checkbox"/> Other	<input type="checkbox"/> To meet standards ()
Modification Schedule:	This item is now available as a service part .		

These changes come from the addition of the Paper Tray Grip in order to improve pulling and pushing the paper tray. These changes are the same as for the K-P1.
This applies to all models K-P2:G073/G074.

Old part number	New part number	Description	Q'ty	Int	Page	Index	Note
G0763032	G0763049	Paper Tray Ass'y – EUR/Asia	1→1	X/O	15	*	
G0763031	G0763048	Paper Tray Ass'y – NA	1→1	X/O	15	*	
G0523061	G0763061	Paper Tray - Front	1→1	X/O	15	15	
	G0763063	Grip - Paper Tray Ass'y	0→1	X/O	15	21	
	04503008B	Tapping Screw - M3×8	0→1	X/O	15	101	

7.CASSETTE (G073/G074)



Model: Model K- P2		Date: 1-Jun-04	No.: MG073007
Modified Article: Discharge Brush at paper exit		Prepared by: A. Ishiyama	
From: 1st Technical Support Sec. Service Support Dept.			
Reason for Modification:	<input type="checkbox"/> Parts catalog correction <input type="checkbox"/> To facilitate assembly <input type="checkbox"/> Part standardization	<input type="checkbox"/> Vendor change <input checked="" type="checkbox"/> To improve reliability <input type="checkbox"/> Other	<input type="checkbox"/> To meet standards ()
Modification Schedule:	The new part is available at SPC.		

The following has been modified to further improve charge removal performance, especially for print jobs made in duplex mode or under low-humidity conditions.

Note: The new part is common to Model K-P3 (G091).

Old Part Number	New Part Number	Description	Q'ty	Int	Page	Index	Note
G0524886		Discharge Brush – Paper Exit	1→0	X/O	3	37	
	→ G0524889	Discharge Brush: Exit: Ass'y	0→1				

Model: Model K- P2		Date: 20-Jan-05	No.: MG073008
Modified Article: Stay – Paper Feed		Prepared by: A. Ishiyama	
From: 1st Technical Support Sec. Service Support Dept.			
Reason for Modification:	<input type="checkbox"/> Parts catalog correction <input type="checkbox"/> To facilitate assembly <input checked="" type="checkbox"/> Part standardization	<input type="checkbox"/> Vendor change <input type="checkbox"/> To improve reliability <input type="checkbox"/> Other	<input type="checkbox"/> To meet standards ()
Modification Schedule:	From January '05 production		

Old Part Number	New Part Number	Description	Q'ty	Int	Page	Index	Note
G0523100	G1112571	Stay – Paper Feed	1→1	X/O	9	7	

Change/Reason: Parts standardization with the next model (Model K-P4).

Model: Model K- P2		Date: 20-Jan-05	No.: MG073009
Modified Article: Power Cord – 230V		Prepared by: A. Ishiyama	
From: 1st Technical Support Sec. Service Support Dept.			
Reason for Modification:	<input type="checkbox"/> Parts catalog correction <input type="checkbox"/> To facilitate assembly <input checked="" type="checkbox"/> Part standardization	<input type="checkbox"/> Vendor change <input type="checkbox"/> To improve reliability <input type="checkbox"/> Other	<input type="checkbox"/> To meet standards ()
Modification Schedule:	From January '05 production		

Old Part Number	New Part Number	Description	Q'ty	Int	Page	Index	Note
GZ000003	G1025502	Power Cord – 230V	1→1	O/O	11	18	

Change/Reason: Parts standardization with the next model (Model K-P4).

Note: This applies only to the EU models (230V).

Reissued: 04-Aug-06

Model: Model K- P2	Date: 04-Aug-06	No.:MG073010a
--------------------	-----------------	---------------

MB Correction

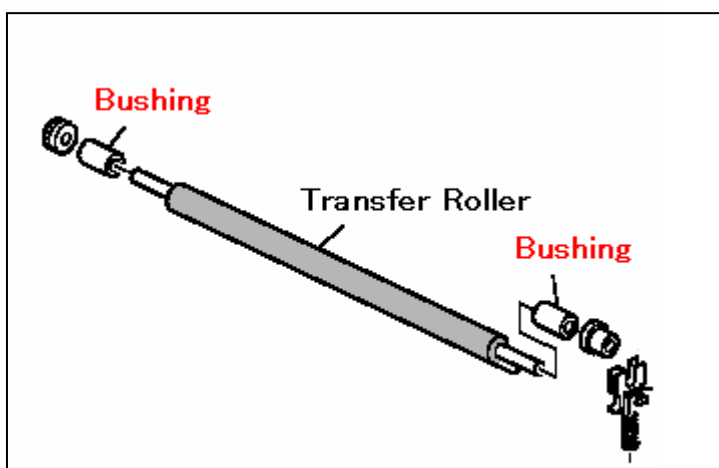
The items in bold italics have been corrected or added.

Modified Article: Transfer Roller		Prepared by: A. Ishiyama	
From: 1st Technical Support Sec. Service Support Dept.			
Reason for Modification:	<input type="checkbox"/> Parts catalog correction <input type="checkbox"/> To facilitate assembly <input checked="" type="checkbox"/> Part standardization	<input type="checkbox"/> Vendor change <input type="checkbox"/> To improve reliability <input type="checkbox"/> Other	<input type="checkbox"/> To meet standards ()
Modification Schedule:	From January '05 production		

Old Part Number	New Part Number	Description	Q'ty	Int	Page	Index	Note
G0523616	G1116256	Transfer Roller	1→1	See Note	13	3	
G0523618	G1296251	Positioning Roller - Transfer	1→1		13	5	
G0763619	G1296252	Gear – Transfer Roller	1→1		13	4	
	G1296255	Bushing	0→2		13	30	

Change/Reason: Parts standardization with the next model (Model K-P4).

Important: All of the new parts in the table must be installed together as a set. You cannot install the new parts individually.



Model: Model K-P2		Date: 27-Jul-06	No.: MG073011
Modified Article: Environmental Correspondence: Choke Coil		Prepared by: Y. Murata	
From: 1st Technical Support Sec. Service Support Dept.			
Reason for Modification:	<input type="checkbox"/> Parts catalog correction <input type="checkbox"/> To facilitate assembly <input checked="" type="checkbox"/> Part standardization	<input type="checkbox"/> Vendor change <input type="checkbox"/> To improve reliability <input type="checkbox"/> Other	<input type="checkbox"/> To meet standards ()
Modification Schedule:	From January '06 production.		

Old Number	New Number	Description	Q'ty	Int	Page	Index	Note
G0523522	G1113522	Discharge Lamp:P3	1	O/O	11	25	
G0525412	G1115412	Harness:Paper Feed:Option	1	O/O	23	17	
G0525425	G1115425	Harness:SCB	1	O/O	3	9	
G0525413	G0915413	Harness:Exit:Option	1	O/O	23	8	
G0525404	G1115404	Harness-Tonner End Sesor	1	O/O	9	16	
G0525400	G1115400	Harness-FST Connecting	1	O/O	9	21	

Reason:

1. Change of the materials used in the part in accordance with environmental restrictions.

Model: K-P2		Date: 7-Aug-06	No.: MG073012
Modified Article: Manual Feed Table:Ass'y		Prepared by: Y.Murata	
From: 1st Tech. Support Sec. Service Support Dept.			
Reason for Modification:	<input type="checkbox"/> Parts catalog correction <input type="checkbox"/> Vendor change <input type="checkbox"/> Other <input type="checkbox"/> To facilitate assembly <input type="checkbox"/> To improve reliability <input checked="" type="checkbox"/> To meet standards (RoHS compliant) <input type="checkbox"/> Part standardization <input type="checkbox"/> Product Safety		

Old part number	New part number	Description	Q'ty	Int	Page	Index	Note
G0523272	G0763274	Base:Manual Feed:Adhesion	1	O/O	3	25	

Change: The materials for these parts were changed.

Reason: To comply with the RoHS Directive.

Model: Model K-P2	Date: 23-Apr-08	No.: MG073013
-------------------	-----------------	---------------

Modified Article: Base - Manual Feed : adhesion		Prepared by: Y.Yoshida	
From: 1st Technical Support Sec. Service Support Dept.			
Reason for Modification:	<input type="checkbox"/> Parts catalog correction <input type="checkbox"/> To facilitate assembly <input checked="" type="checkbox"/> Part standardization	<input type="checkbox"/> Vendor change <input type="checkbox"/> To improve reliability <input type="checkbox"/> Other	<input checked="" type="checkbox"/> To meet standards ()
Modification Schedule:			

Old part number	New part number	Description	Q'ty	Int	Page	Index	Note
G0763273	G0763274	Base - Manual Feed : Adhesion	1→1	O/O	3	25	1

Change: The material of this part was changed.

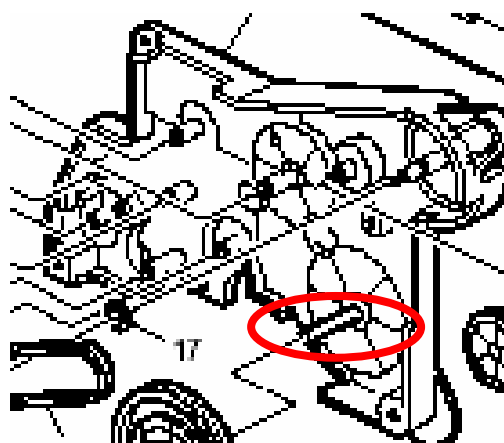
Reason: RoHS compliance

Model: Model K-P2		Date: 24-Oct-08	No.: MG073014
Modified Article: Drive Unit Bracket		Prepared by: Y.Yoshida	
From: 1st Technical Support Sec. Service Support Dept.			
Reason for Modification:	<input type="checkbox"/> Parts catalog correction <input type="checkbox"/> To facilitate assembly <input type="checkbox"/> Part standardization	<input type="checkbox"/> Vendor change <input checked="" type="checkbox"/> To improve reliability <input type="checkbox"/> Other	<input type="checkbox"/> To meet standards ()
Modification Schedule:			

Old Part Number	New Part Number	Description	Q'ty	Int	Page	Index	Note
G0521102	M0011122	Drive Unit Bracket	1→1		21	20	

Change: The material of the shaft was changed.

Reason: To further improve the performance of the drum drive mechanism.





Part Change Information List

Date: March 31, 2010

Model	Code	PCIL Nr.	PCIL Correction	Old part number	New part number	Description	Old Q'ty	New Q'ty	Int	3DPC	Page	Index	Set	Set Int	RTB	Note	Ref. Nr.	ECN Nr.
K-P2	G073	201003		G0523135	G0903135	FRICTION PAD:JDL:ADHESION	1	1	O/O		15	13					V0804744	8111416



Part Change Information List

Date: May 31, 2010

Model	Code	PCIL Nr.	PCIL Correction	Old part number	New part number	Description	Old Q'ty	New Q'ty	Int	3DPC	Page	Index	Set	Set Int	RTB	Note	Ref. Nr.	ECN Nr.
K-P2	G073	201005		AX200208	GX200026	MAGNETIC CLUTCH - Z45	1	1	X/O		9	3					V1001097	



Part Change Information List

Date: February 28, 2011

Model	Code	PCIL Nr.	PCIL Correction	Old part number	New part number	Description	Old Q'ty	New Q'ty	Int	3DPC	Page	Index	Set	Set Int	RTB	Note	Ref. Nr.	ECN Nr.
K-P2	G073	201102		G0523140	G1292583	MAGNETIC CLUTCH ASS'Y - PAPER FEED	1	1	O/O		7	4					V1001681	



Part Change Information List

Date: June 30, 2011

Model	Code	PCIL Nr.	PCIL Correction	Old part number	New part number	Description	Old Q'ty	New Q'ty	Int	3DPC	Page	Index	Set	Set Int	RTB	Note	Ref. Nr.	ECN Nr.
K-P2	G073	201106		G0525422	G0885422	Harness - Main SW 230W	1	1	X/O		25	3					V1100448	11010159



Part Change Information List

Date: May 30, 2014

Model	Code	PCIL Number	PCIL Correction	Old part number	New part number	Description	Old Q'ty	New Q'ty	Int	3DPC	Page	Index	Set	Set Int	RTB	Note	Ref Number	ECN Number
K-P2	G073	201405		G0525060	M0015250	PCB:SYNC DETECTOR BOARD	1	1	O/O		5	24					V1301122	



Part Change Information List

Date: October 31, 2014

Model	Code	PCIL Number	PCIL Correction	Old part number	New part number	Description	Old Q'ty	New Q'ty	Int	3DPC	Page	Index	Set	Set Int	RTB	Note	Ref Number	ECN Number
K-P2	G073	201410		G0521274	M0791274	LEVER:MICRO SWITCH:REAR	1	1	X/O		11	1					V1402928	



Part Change Information List

Date: April 1, 2015

Model	Code	PCIL Number	PCIL Correction	Old part number	New part number	Description	Old Q'ty	New Q'ty	Int	3DPC	Page	Index	Set	Set Int	RTB	Note	Ref Number	ECN Number
K-P2	G073	201503		G0523294	G0883294	PAPER TRANSPORT GUIDE	1	1	X/O	N	13	10					V1403217	



Part Change Information List

Date: December 2, 2015

Model	Code	PCIL Number	PCIL Correction	Old part number	New part number	Description	Old Q'ty	New Q'ty	Int	3DPC	Page	Index	Set	Set Int	RTB	Note	Ref Number	ECN Number
K-P2	G073	201511		G0522702	G0522703	IMAGING UNIT:ASS'Y	1	1	O/O	N	5	*					V1501812	