

QUICK INSTALLATION GUIDE

Please read the Safety Information in the "Operating Instructions" before using this machine. It contains important information related to USER SAFETY and PREVENTING EQUIPMENT PROBLEMS.

1

UNPACKING THE PRINTER AND CHECKING THE CONTENTS OF THE BOX

- 1 Check the contents of the box according to the following list. If one or some items are missing, please contact your sales or service representative.

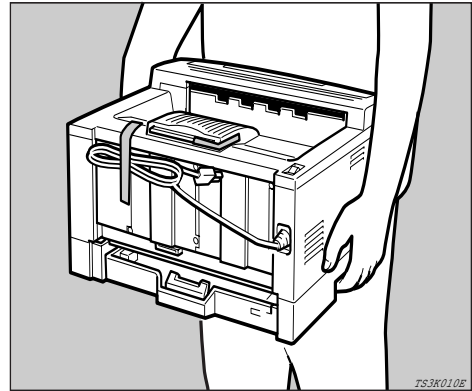
Important

- ☐ The interface cable is not included in the box. It is your responsibility to provide the interface cable appropriate for the computer that you are using.
- ☒ Quick Installation Guide (this sheet)
- ☐ Operating Instructions
- ☐ CD-ROM
- ☐ Additional Documentation

- 2 Remove the plastic bag. Lift the printer and move it to the place where you want to install it.

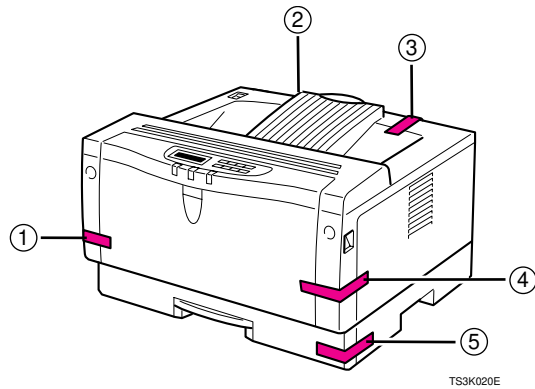
When lifting the printer, use the inset grips on both sides of the printer.

ILLUSATRATION CHANGE REQUIRED



- 3 Remove the four pieces of adhesive tape from the printer as shown in the illustration.

ILLUSATRATION CHANGE REQUIRED



2

WHERE TO PUT YOUR PRINTER

Your printer's location should be carefully chosen because environmental conditions greatly affect its performance.

Warning

- Make sure that the wall outlet is near the machine and freely accessible, so that in event of an emergency, it can be unplugged easily.

Warning

- Only connect the machine to the power source described on this sheet.
- Avoid multi-wiring.
- Do not damage, break or make any modifications to the power cord. Do not place heavy objects on it, pull it hard or bend it more than necessary. These actions could cause an electric shock or fire.

Caution

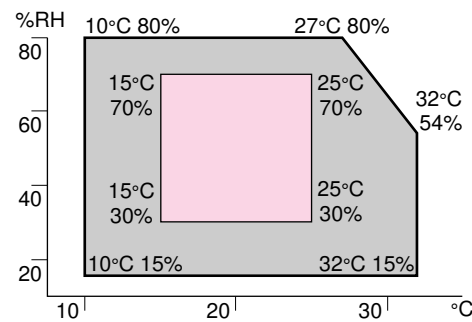
- Keep the machine away from humidity and dust. A fire or an electric shock might occur.
- Place the machine on a strong and level surface. Otherwise, the machine might fall and cause personal injury.

Caution

- If you use the machine in a confined space, make sure there is a continuous flow of air.

Optimum Environmental Conditions

The recommended temperature and humidity



■ Possible operation range ■ Recommended range

The machine must be level within 5 mm, 0.2" both front to right and left to right.

Environments to Avoid

Important

- ☐ Locations exposed to direct sunlight or strong light
- ☐ Dusty areas
- ☐ Areas with corrosive gases
- ☐ Areas excessively cold, heat, or humid
- ☐ Locations near an air conditioner or humidifier
- ☐ Locations near other electronic equipment
- ☐ Locations where the printer might be subjected to frequent strong vibration

Power Connection

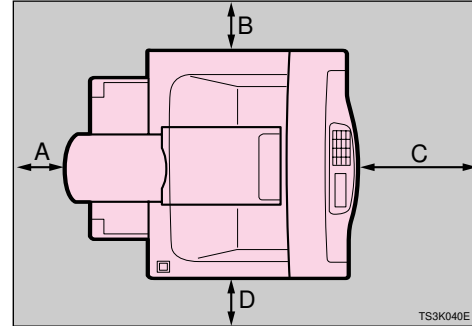
Connect the power cord to a power source with a following specifications:

- ☐ 220-240 V, 50/60 Hz, XXXA or more

4

Space Required for Installing the Printer

Leave enough space around the printer. This space is necessary to operate the printer. The recommended (or minimum) space requirement is as follows:



A: more than 10 cm (4.0")

B: more than 10 cm (4.0")

C: more than 100 cm (40.0")

D: more than 10 cm (4.0")

3

INSTALLING THE TONER CARTRIDGE

Warning

- Do not incinerate spilled toner or used toner. Toner dust might ignite when exposed to an open flame.
- Disposal can take place at our authorized dealer or at an appropriate collection site.
- If you dispose of the user toner containers yourself, dispose of them according to your local regulations.

Caution

- Do not eat or swallow toner.
- Keep toner (used or unused) and toner cartridge out of reach of children.

Caution

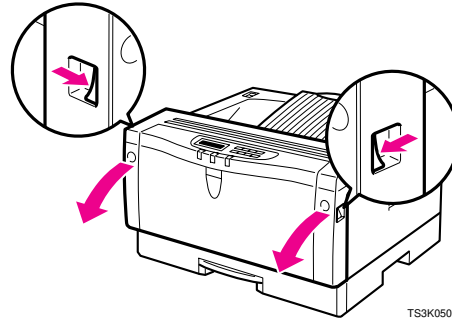
- Our products are engineered to meet the highest standards of quality and functionality. When purchasing expendable supplies, we recommend using only those provided by an authorized dealer.

Important

- ☐ Do not expose the toner cartridge to a light for a long time. If you do, the toner cartridge will be damaged and the print quality might be reduced.

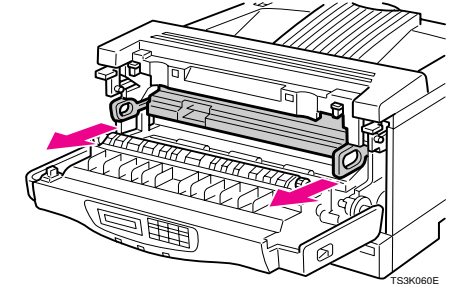
1

- 1 Open the front cover by pulling the front cover release buttons.



2

- 2 Pull the toner cartridge out of the printer by holding the grips of the cartridge.

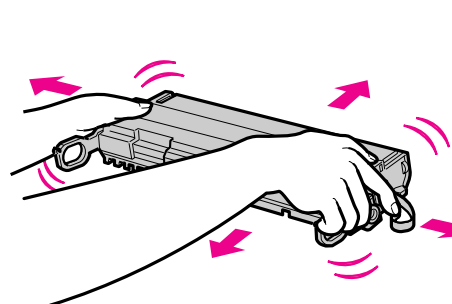


Note

- ☐ Do not hold the toner cartridge upside down or stand it vertically.

3

- 3 Hold the toner cartridge as shown in the illustration, and shake it side to side, about 7 - 8 times.

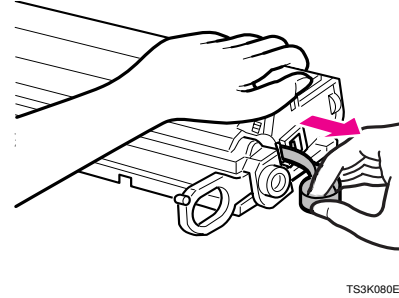


Note

- ☐ If the toner cartridge is not shaken enough, toner might not be evenly distributed in the cartridge. In this case, the print quality might be reduced.

4

- 4 Place the toner cartridge on a flat surface. Pull out the tape inside the unit horizontally while holding the cartridge with one hand as shown in the illustration.

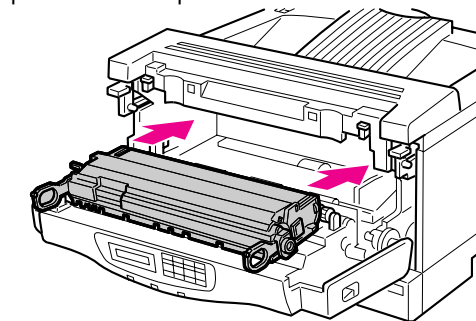


Important

- ☐ Be sure to pull the tape completely before installing the toner cartridge. Otherwise, the printer might be damaged.
- ☐ Be sure to pull the tape horizontally. Pulling it upward or downward causes toner scattering.
- ☐ Be careful not to make your cloths dirty with toner.
- ☐ After pulling out the tape from the cartridge, toner scatters easily. Do not shake or give a shock to the cartridge.

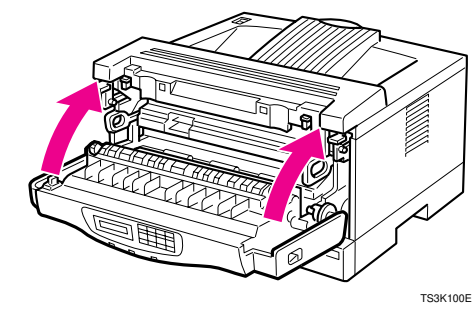
5

- 5 Holding the grips of the cartridge, insert it into the printer until it stops as shown in the illustration.



6

- 6 Close the front cover.



Important

- ☐ Do not close the front cover with force. If you cannot close the cover easily, pull out the toner cartridge from the printer and insert it again. After that, close the front cover again.

4

INSTALLING THE PAPER TRAY

The default settings of the paper size are as follows:

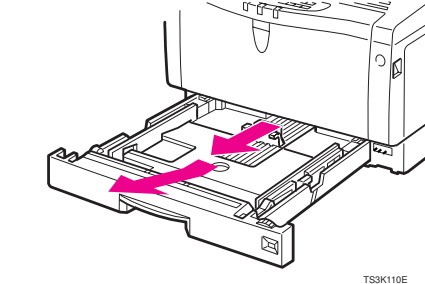
- Metric version: A4 (long-edge feed)
- Inch version: 8 1/2" x 11" (long-edge feed)

For settings other than the default paper size, see "Loading Paper and Other Media" in the "Operating Instructions".

For more information about the paper sizes that can be set in the paper tray, see "Paper and Other Media Supported by Your Printer" in the "Operating Instructions".

1

- 1 Pull the paper tray out until it stops. After that, lift it slightly, then pull it out of the printer.



Note

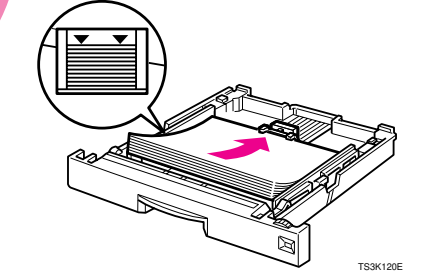
- ☐ Do not touch the three white pins on the right front side of the printer.

2

- 2 If necessary, adjust the front and side guides to the paper size you want to use.

3

- 3 Load paper into the paper tray with the print side up.

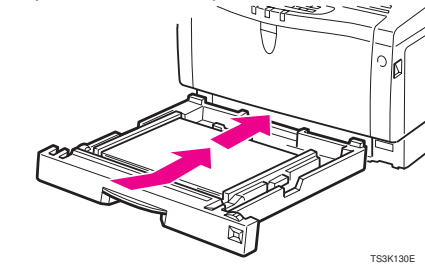


Important

- ☐ Make sure that the top of the stack is not higher than the limit mark inside the tray.
- ☐ Make sure the paper fits under the rear guides.

4

- 4 While lifting the front side of the tray, place the paper tray into the printer. Then slide it into the printer until it stops.



Important

- ☐ Make sure that the setting of the paper size dial matches the size and feed direction of the paper in the tray. Otherwise, the printer might be damaged or printing problem might occur.

5

CONNECTING THE POWER CORD

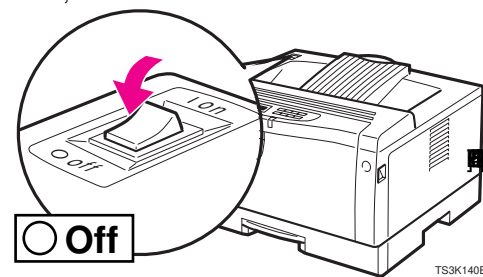
Caution

- When you pull the plug out of the socket, grip the plug to avoid damaging the cord and causing a fire or an electric shock.

Caution

- It is dangerous to handle the plug with wet hands. Doing this may result in receiving an electric shock.

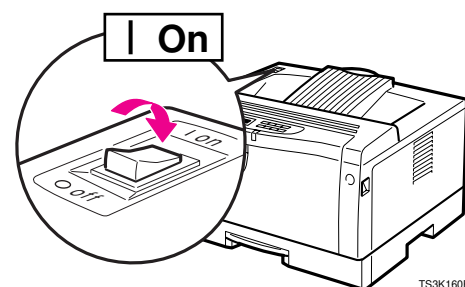
- Check that the power switch is turned off. If it is on, turn it off.



- Insert the outlet plug of the power cord into the printer's outlet securely.

- Insert the plug of the power cord into the wall socket securely.

- Turn the power switch on.



6

SELECTING THE PANEL DISPLAY LANGUAGE

You can select one of the following languages: English, German, French, Italian, Spanish, Dutch, Swedish, Norwegian, Danish, Finnish, Hungarian, Czech, Polish, and Portuguese

Note

- The default setting is English.
- If you want to use the English panel display, it is not necessary for you to do the following procedures.

- While pressing the **Menu** key, turn on the printer's power switch.

The following message appears on the panel display:

Language
▲English ▼

- Press the ▲▼ keys until the language you want to select appears on the panel display.

- Press the **Enter** key.

- Press the **On Line** key.

The settings become effective and the normal display screen appears.

7

PRINTING THE TEST PAGE

You can check if the printer works properly by printing a test page (configuration page).

However, you cannot check the connection between the printer and your computer by printing the test page.

- Check that the power switch is turned on.

- Press the **Menu** key.

The following message appears on the panel display:

Main Menu: ▲
Job Control ▼

- Press the ▲▼ keys until the following message appears on the panel display.

Main Menu: ▲
List Print ▼

- Press the **Enter** key.

The following message appears on the panel display:

List Print: ▲
1.Config. page ▼

- Press the **Enter** key.

The following message appears on the panel display:

Config. page: ▲
Press Enter key

- Press the **Enter** key.

In a short time, the test printing will start.

Important

- If you cannot complete the test printing correctly, check if an error message appears on the panel display. For more information about error messages, see "Troubleshooting" in the "Operating Instructions".
- After installing the new toner cartridge, the first few pages might be printed with light density. If density does not become darker, see "Troubleshooting" in the "Operating Instructions".

8

CONNECTING THE PRINTER TO A COMPUTER

Connect the printer to your computer using a parallel port.

Important

- The parallel interface cable is not provided with the printer. It is your responsibility to provide the interface cable appropriate for the computer that you are using.
- The printer's parallel connection is a standard bi-directional interface. It requires a standard 36-pin parallel cable compliant with IEEE1284 and a parallel port available on your computer.
- To avoid electrical interference, use the shielded cable.

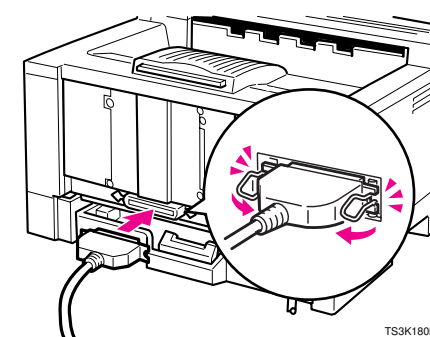
Note

- Do not use a parallel cable more than 2.5 meters (8.2 feet) long.

- Turn off the printer's power switch.

- Turn your computer off.

- Attach the interface cable to the interface connector of the printer. Secure the cable with the metal fittings as shown in the illustration.



- Attach the other end of the interface cable to the interface connector of the computer. Secure the cable.

9

SETTING UP FOR PRINTING

Printing requires installation of a printer driver for your operating system.

See "Printer Drivers for Your Printer" in the "Operating Instructions".