

Model: Bellini-C2/Martini-C2 Z-folding Unit Type2105	Date: 15-Oct-04	No.: MB660001
--	-----------------	---------------

Modified Article: Main Control Board		Prepared by: M. Matsuda	
From: 2nd Tech. Support Sec. Service Support Dept.			
Reason for Modification:	<input checked="" type="checkbox"/> Parts catalog correction	<input type="checkbox"/> Vendor change	<input type="checkbox"/> To meet standards ()
	<input type="checkbox"/> To facilitate assembly	<input type="checkbox"/> To improve reliability	
	<input type="checkbox"/> Part standardization	<input type="checkbox"/> Other	

Incorrect part number	Correct part number	Description	Q'ty	Int	Page	Index	Note
B6605511	B6605522	Base:Relay:Main Control:PF4132K406A	1	-	15	9	
B6605511	B6605541	Base:Main Control:PF4132K401	1	-	23	9	

Change: P/N correction only.

Note: P/N B6605541 (Base:Main Control:PF4132K401) includes the EP-ROM for the Z-folding unit.

Reissued: 9-Jun-05

Model: Bellini-C2/Martini-C2 Z-Folding Unit	Date: 26-Apr-05	No.: MB660002a
---	-----------------	----------------

MB Correction

The following items in ***bold italics*** have been corrected.

Modified Article: HORIZONTAL GUIDE PLATE		Prepared by: S.Ishizu	
From: 2nd Tech. Support Sec. Service Support Dept.			
Reason for Modification:	<input type="checkbox"/> Parts catalog correction	<input type="checkbox"/> Vendor change	<input checked="" type="checkbox"/> Other
	<input type="checkbox"/> To facilitate assembly	<input type="checkbox"/> To improve reliability	<input type="checkbox"/> To meet standards
	<input type="checkbox"/> Part standardization	<input type="checkbox"/> Product Safety	()

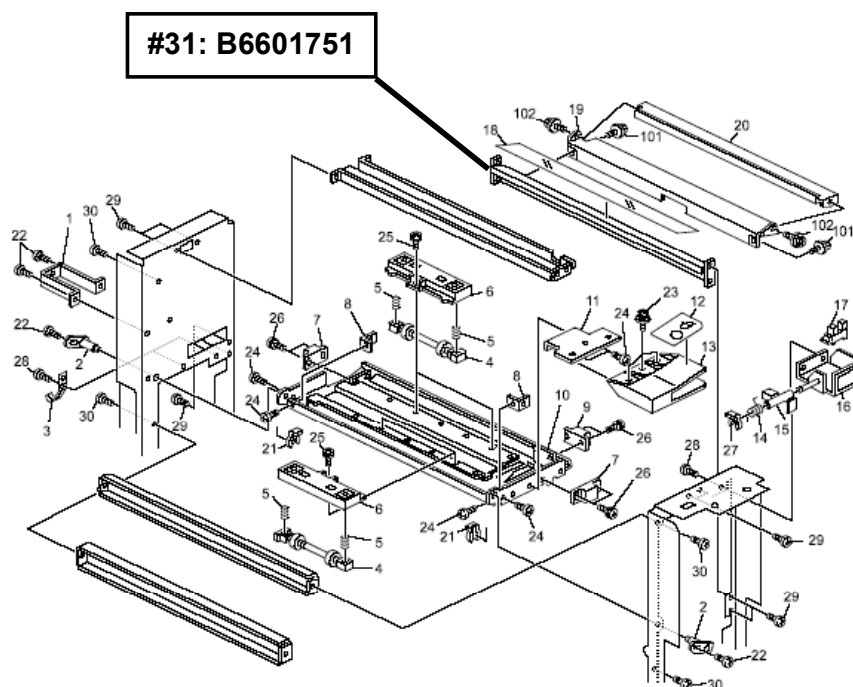
Section 2. Paper Transfer 1 (B660)

Old part number	New part number	Description	Q'ty	Int	Page	Index	Note
-	<i>B6601751</i>	<i>HORIZONTAL GUIDE PLATE: PF4132P142A</i>	1	-	5	*31	

*: New Index

Change: This part was added.

Reason: A request from the field.



Model: Bellini-C2/Martini-C2 Z-folding Unit		Date: 28-Mar-08	No.: MB660004
Modified Article: Harness – Power Source		Prepared by: S. Ishizu	
From: 2nd Tech. Support Sec. Service Support Dept.			
Reason for Modification:	<input type="checkbox"/> Parts catalog correction <input type="checkbox"/> Vendor change <input checked="" type="checkbox"/> Other <input type="checkbox"/> To facilitate assembly <input type="checkbox"/> To improve reliability <input type="checkbox"/> To meet standards <input type="checkbox"/> Part standardization <input type="checkbox"/> Product Safety ()		

Old part number	New part number	Description	Q'ty	Int	Page	Index	Note
B6605185	B6605186	Harness – Power Source	1	O/O	23	26	
B6605211	B6605212	Harness – AC Power Supply	1	O/O	23	35	
B6605215	B6605216	Harness – AC Power Supply	1	O/O	23	22	
B6605231	B6605234	Harness – AC Power Supply	1	O/O	23	25	

Change: The materials of these parts were changed.

Reason: To comply with revisions made to Ricoh's internal product safety standards.



Part Change Information List

Date: October 31, 2012

Model	Code	PCIL Nr.	PCIL Correction	Old part number	New part number	Description	Old Q'ty	New Q'ty	Int	3DPC	Page	Index	Set	Set Int	RTB	Note	Ref. Nr.	ECN Nr.
B-C2/MT-C2 Z-folding Unit	B660	201210		B6605512	B6605514	BASE:CONNECTING:PF4147K508A:ASS'Y	1	1	O/O		23	19					V1001902	10070709



Part Change Information List

Date: April 2, 2018

Model	Code	PCIL Number	PCIL Correction	Old part number	New part number	Description	Old Q'ty	New Q'ty	Int	3DPC	Page	Index	Set	Set Int	RTB	Note	Ref Number	ECN Number
B-C2_MT-C2 Z-folding Unit	B660	201803		B6605442	B6605443	ENTRANCE SENSOR:WG8-5849-000	7	7	O/O	N	5	17					V1702193	
B-C2_MT-C2 Z-folding Unit	B660	201803		B6605442	B6605443	ENTRANCE SENSOR:WG8-5849-000	7	7	O/O	N	7	7					V1702193	
B-C2_MT-C2 Z-folding Unit	B660	201803		B6605442	B6605443	ENTRANCE SENSOR:WG8-5849-000	7	7	O/O	N	11	2					V1702193	
B-C2_MT-C2 Z-folding Unit	B660	201803		B6605442	B6605443	ENTRANCE SENSOR:WG8-5849-000	7	7	O/O	N	13	9					V1702193	
B-C2_MT-C2 Z-folding Unit	B660	201803		B6605442	B6605443	ENTRANCE SENSOR:WG8-5849-000	7	7	O/O	N	15	3					V1702193	