

Reissued: 19-Mar-09

Model: B-C4	Date: 04-Mar-09	No.: RD455001a
-------------	-----------------	----------------

RTB Reissue

The items in bold italics have been corrected.

Subject: Firmware Release Note: Trimmer		Prepared by: T. Tadokoro	
From: PPBG QA/Service Planning Dept.			
Classification:	<input type="checkbox"/> Troubleshooting	<input type="checkbox"/> Part information	<input type="checkbox"/> Action required
	<input type="checkbox"/> Mechanical	<input type="checkbox"/> Electrical	<input type="checkbox"/> Service manual revision
	<input type="checkbox"/> Paper path	<input type="checkbox"/> Transmit/receive	<input type="checkbox"/> Retrofit information
	<input type="checkbox"/> Product Safety	<input checked="" type="checkbox"/> Other ()	<input type="checkbox"/> Tier 2

This RTB has been issued to announce the firmware release information for the **Trimmer**.

Version	Program No.	Effective Date
15.24:13	<i>D4555510B</i>	<i>February 2009 production</i>
15.23:13	D4555510A	1st Mass production

Version	Modified Points or Symptom Corrected
15.24:13	<i>Problem to be Solved</i> <i>· Occurrence of JAM437</i>
15.23:13	1st Mass production

Reissued: 13-Oct-10

Model: B-C4, B-P1, Aries-P1.5/C1.5	Date: 04-Mar-09	No.: RD455001b
---	-----------------	----------------

RTB Reissue

The items in bold italics have been corrected.

Subject: Firmware Release Note: Trimmer		Prepared by: J. Ohno	
From: PPBG Service Planning Dept.			
Classification:	<input type="checkbox"/> Troubleshooting <input type="checkbox"/> Mechanical <input type="checkbox"/> Paper path <input type="checkbox"/> Product Safety	<input type="checkbox"/> Part information <input type="checkbox"/> Electrical <input type="checkbox"/> Transmit/receive <input checked="" type="checkbox"/> Other ()	<input type="checkbox"/> Action required <input type="checkbox"/> Service manual revision <input type="checkbox"/> Retrofit information <input type="checkbox"/> Tier 2

This RTB has been issued to announce the firmware release information for the **Trimmer**.

Version	Program No.	Effective Date
15.270:15	D4555510C	September 2010 production
15.24:13	D4555510B	February 2009 production
15.23:13	D4555510A	1st Mass production

Version	Modified Points or Symptom Corrected
15.270:15	<i>The Trimmer is supported by the Pro C901/C901S.</i> <i>Symptoms Corrected:</i> <ul style="list-style-type: none"> <i>With the Cooling Fan Unit Type 5000 installed the actual trim width results in 10mm even when set to 20mm.</i> <i>Pro C901/C901S installed with the Trimmer Unit TR5020 causes jams when saddle-stitching the output scanned on the exposure glass.</i> <i>SC990 occurs on the mainframe after an SC on the Trimmer Unit TR5020.</i> <i>Jam occurs on the Trimmer Unit TR5020 when trimming a saddle-stitched booklet after saddle-stitching the output scanned on the exposure glass.</i> <i>SC is not indicated even when sheets are fed while the Cutter Motor is not running (due to a harness disconnection).</i>
15.24:13	Problem to be Solved <ul style="list-style-type: none"> Occurrence of JAM437
15.23:13	1st Mass production

Model: Trimmer Unit 5020	Date: 04-Nov-2010	No.: RD455002
--------------------------	-------------------	---------------

Subject: New P/N of the Tray		Prepared by: J. Ohno	
From: PPBG/Service Planning Dept.			
Classification:	<input type="checkbox"/> Troubleshooting <input type="checkbox"/> Mechanical <input type="checkbox"/> Paper path <input type="checkbox"/> Product Safety	<input checked="" type="checkbox"/> Part information <input type="checkbox"/> Electrical <input type="checkbox"/> Transmit/receive <input type="checkbox"/> Other ()	<input type="checkbox"/> Action required <input type="checkbox"/> Service manual revision <input type="checkbox"/> Retrofit information <input type="checkbox"/> Tier 2

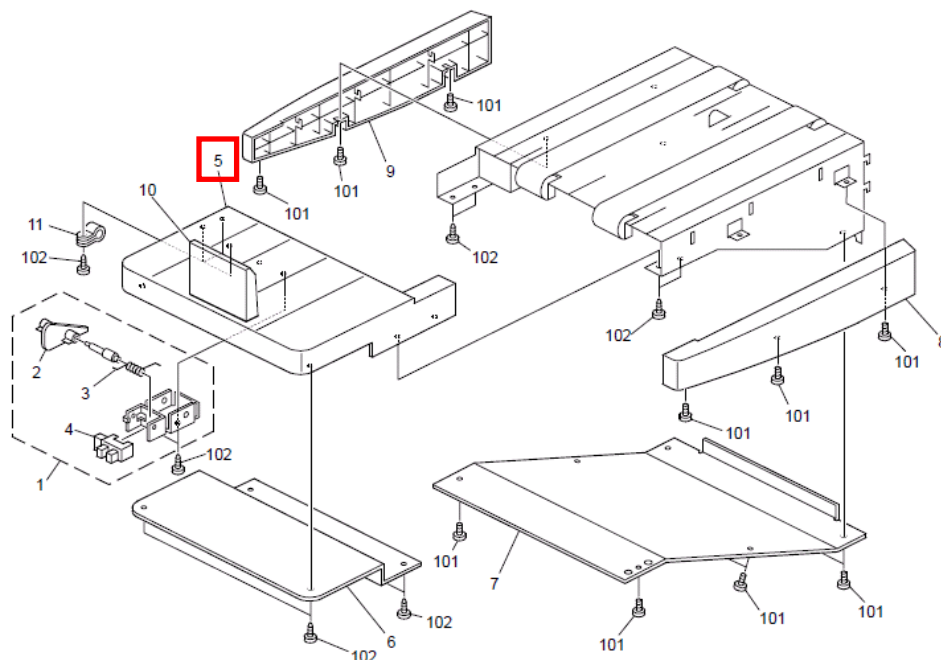
Please apply the following correction to your **Trimmer Unit 5020** parts catalog.

Change: New p/n D4556137 has been registered for the tray.

Reason: p/n D4556131 had been falsely deleted from the parts registration system.

Old Part Number	New Part Number	Description	Q'ty	I/C	Page	Index
D4556131		FRAME:TRAY:YZ2-08408123	1→0	O/O	28	5
	▶D4556137	FRAME:TRAY:YZ2-08408128	0→1	O/O	28	5

14.Tray Section 1 (D455)



Model: Trimmer Unit TR5020 (D455)		Date: 18-Nov-10	No.: RD455003
Subject: 11 screws replaced with generic screws		Prepared by: T. Komori	
From: PP Service Planning Department 1G			
Classification:	<input type="checkbox"/> Troubleshooting <input checked="" type="checkbox"/> Part information <input type="checkbox"/> Action required <input type="checkbox"/> Mechanical <input type="checkbox"/> Electrical <input type="checkbox"/> Service manual revision <input type="checkbox"/> Paper path <input type="checkbox"/> Transmit/receive <input type="checkbox"/> Retrofit information <input type="checkbox"/> Product Safety <input type="checkbox"/> Other () <input type="checkbox"/> Tier 2		

Change: The following 11 screws have been replaced with generic screws.

(1) D4553126 PAN HEAD SCREW:M3X6(P3)

Old Part Number	New Part Number	Description	Q'ty	Int	Page	Index
D4553126		PAN HEAD SCREW:M3X6(P3)		X/X	27	16
	03130060N	SCREW - M3X6	1	X/X	27	105
	07030030N	SPRING WASHER:DIA3	1	X/X	27	106
	07010030N	WASHER DIA3	1	X/X	27	107

Old Part Number	New Part Number	Description	Q'ty	Int	Page	Index
D4553126		PAN HEAD SCREW:M3X6(P3)		X/X	11	6
	03130060N	SCREW - M3X6	1	X/X	11	102
	07030030N	SPRING WASHER:DIA3	1	X/X	11	103
	07010030N	WASHER DIA3	1	X/X	11	104

Old Part Number	New Part Number	Description	Q'ty	Int	Page	Index
D4553126		PAN HEAD SCREW:M3X6(P3)		X/X	15	11
	03130060N	SCREW - M3X6	1	X/X	15	106
	07030030N	SPRING WASHER:DIA3	1	X/X	15	107
	07010030N	WASHER DIA3	1	X/X	15	108

Old Part Number	New Part Number	Description	Q'ty	Int	Page	Index
D4553126		PAN HEAD SCREW:M3X6(P3)		X/X	17	19
	03130060N	SCREW - M3X6	1	X/X	17	106
	07030030N	SPRING WASHER:DIA3	1	X/X	17	107
	07010030N	WASHER DIA3	1	X/X	17	108

Old Part Number	New Part Number	Description	Q'ty	Int	Page	Index
D4553126		PAN HEAD SCREW:M3X6(P3)		X/X	9	22
	03130060N	SCREW - M3X6	1	X/X	9	107
	07030030N	SPRING WASHER:DIA3	1	X/X	9	108
	07010030N	WASHER DIA3	1	X/X	9	109

Model: Trimmer Unit TR5020 (D455)

Date: 18-Nov-10

No.: RD455003

Old Part Number	New Part Number	Description	Q'ty	Int	Page	Index
D4553126		PAN HEAD SCREW:M3X6(P3)		X/X	5	17
	03130060N	SCREW - M3X6	1	X/X	5	105
	07030030N	SPRING WASHER:DIA3	1	X/X	5	106
	07010030N	WASHER DIA3	1	X/X	5	107

Old Part Number	New Part Number	Description	Q'ty	Int	Page	Index
D4553126		PAN HEAD SCREW:M3X6(P3)		X/X	31	15
	03130060N	SCREW - M3X6	1	X/X	31	104
	07030030N	SPRING WASHER:DIA3	1	X/X	31	105
	07010030N	WASHER DIA3	1	X/X	31	106

(2) D4553127 PAN HEAD SCREW:M3X8(P3)

Old Part Number	New Part Number	Description	Q'ty	Int	Page	Index
D4553127		PAN HEAD SCREW:M3X8(P3)		X/X	5	16
	03130080N	PAN HEAD SCREW:M3X8	1	X/X	5	108
	07030030N	SPRING WASHER:DIA3	1	X/X	5	106
	07010030N	WASHER DIA3	1	X/X	5	107

Old Part Number	New Part Number	Description	Q'ty	Int	Page	Index
D4553127		PAN HEAD SCREW:M3X8(P3)		X/X	25	13
	03130080N	PAN HEAD SCREW:M3X8	1	X/X	25	103
	07030030N	SPRING WASHER:DIA3	1	X/X	25	104
	07010030N	WASHER DIA3	1	X/X	25	105

(3) D4553128 PAN HEAD SCREW:M4X6(P2)

Old Part Number	New Part Number	Description	Q'ty	Int	Page	Index
D4553128		PAN HEAD SCREW:M4X6(P2)		X/X	35	20
	03140060N	SCREW - M4X6	1	X/X	35	103
	07030040N	SPRING WASHER:DIA4	1	X/X	35	104

(4) D4553129 PAN HEAD SCREW:M4X8(P4)

Old Part Number	New Part Number	Description	Q'ty	Int	Page	Index
D4553129		PAN HEAD SCREW:M4X8(P4)		X/X	25	14
	03140080N	PHILIPS PAN HEAD SCREW - M4X8	1	X/X	25	106
	07030040N	SPRING WASHER:DIA4	1	X/X	25	107
	07080040N	WASHER - DIA4	1	X/X	25	108

Model: Trimmer Unit TR5020 (D455)

Date: 18-Nov-10

No.: RD455003

(5) D4553137 PAN HEAD SCREW:M4X8(P3)

Old Part Number	New Part Number	Description	Q'ty	Int		Page	Index
D4553137		PAN HEAD SCREW:M4X8(P3)		X/X		25	15
	03140080N	PHILIPS PAN HEAD SCREW - M4X8	1	X/X	O/O as a set	25	106
	07030040N	SPRING WASHER:DIA4	1	X/X		25	107
	07010040N	WASHER:DIA4	1	X/X		25	109

Old Part Number	New Part Number	Description	Q'ty	Int		Page	Index
D4553137		PAN HEAD SCREW:M4X8(P3)		X/X		33	7
	03140080N	PHILIPS PAN HEAD SCREW - M4X8	1	X/X	O/O as a set	33	105
	07030040N	SPRING WASHER:DIA4	1	X/X		33	106
	07010040N	WASHER:DIA4	1	X/X		33	107

Old Part Number	New Part Number	Description	Q'ty	Int		Page	Index
D4553137		PAN HEAD SCREW:M4X8(P3)		X/X		5	104
	03140080N	PHILIPS PAN HEAD SCREW - M4X8	1	X/X	O/O as a set	5	109
	07030040N	SPRING WASHER:DIA4	1	X/X		5	110
	07010040N	WASHER:DIA4	1	X/X		5	111

(6) D4553153 PAN HEAD SCREW:M3X6(P2)

Old Part Number	New Part Number	Description	Q'ty	Int		Page	Index
D4553153		PAN HEAD SCREW:M3X6(P2)		X/X		21	8
	03130060N	SCREW - M3X6	1	X/X	O/O as a set	21	105
	07030030N	SPRING WASHER:DIA3	1	X/X		21	106

Old Part Number	New Part Number	Description	Q'ty	Int		Page	Index
D4553153		PAN HEAD SCREW:M3X6(P2)		X/X		35	21
	03130060N	SCREW - M3X6	1	X/X	O/O as a set	35	105
	07030030N	SPRING WASHER:DIA3	1	X/X		35	106

Old Part Number	New Part Number	Description	Q'ty	Int		Page	Index
D4553153		PAN HEAD SCREW:M3X6(P2)		X/X		15	10
	03130060N	SCREW - M3X6	1	X/X	O/O as a set	15	106
	07030030N	SPRING WASHER:DIA3	1	X/X		15	107

Model: Trimmer Unit TR5020 (D455)

Date: 18-Nov-10

No.: RD455003

Old Part Number	New Part Number	Description	Q'ty	Int	Page	Index
D4553153		PAN HEAD SCREW:M3X6(P2)		X/X	27	17
	03130060N	SCREW - M3X6	1	X/X	27	105
	07030030N	SPRING WASHER:DIA3	1	X/X	27	106

Old Part Number	New Part Number	Description	Q'ty	Int	Page	Index
D4553153		PAN HEAD SCREW:M3X6(P2)		X/X	31	16
	03130060N	SCREW - M3X6	1	X/X	31	104
	07030030N	SPRING WASHER:DIA3	1	X/X	31	105

Old Part Number	New Part Number	Description	Q'ty	Int	Page	Index
D4553153		PAN HEAD SCREW:M3X6(P2)		X/X	9	21
	03130060N	SCREW - M3X6	1	X/X	9	107
	07030030N	SPRING WASHER:DIA3	1	X/X	9	108

Old Part Number	New Part Number	Description	Q'ty	Int	Page	Index
D4553153		PAN HEAD SCREW:M3X6(P2)		X/X	17	16
	03130060N	SCREW - M3X6	1	X/X	17	106
	07030030N	SPRING WASHER:DIA3	1	X/X	17	107

(7) D4553177 PAN HEAD SCREW:M3X4P2

Old Part Number	New Part Number	Description	Q'ty	Int	Page	Index
D4553177		PAN HEAD SCREW:M3X4P2		X/X	21	9
	03130040N	SCREW:M3X4	1	X/X	21	104
	07030030N	SPRING WASHER:DIA3	1	X/X	21	106

(8) D4553178 PAN HEAD SCREW:M4X10P4

Old Part Number	New Part Number	Description	Q'ty	Int	Page	Index
D4553178		PAN HEAD SCREW:M4X10P4		X/X	33	8
	03140100N	PAN HEAD SCREW:M4X10	1	X/X	33	104
	07030040N	SPRING WASHER:DIA4	1	X/X	33	106
	07080040N	WASHER - DIA4	1	X/X	33	108

(9) D4553204 PAN HEAD SCREW:M4X15P2

Old Part Number	New Part Number	Description	Q'ty	Int	Page	Index
D4553204		PAN HEAD SCREW:M4X15P2		X/X	27	18
	03140250N	PAN HEAD SCREW:M4X25	1	X/X	27	104
	07030040N	SPRING WASHER:DIA4	1	X/X	27	108

Model: Trimmer Unit TR5020 (D455)	Date: 18-Nov-10	No.: RD455003
-----------------------------------	-----------------	---------------

(10) D4553209 PAN HEAD SCREW:M3X20P3

Old Part Number	New Part Number	Description	Q'ty	Int		Page	Index
D4553209		PAN HEAD SCREW:M3X20P3		X/X	O/O as a set	17	17
	03130200N	PAN HEAD SCREW:M3X20	1	X/X		17	104
	07030030N	SPRING WASHER:DIA3	1	X/X		17	107
	07010030N	WASHER DIA3	1	X/X		17	108

(11) D4553211 PAN HEAD SCREW:M430P3

Old Part Number	New Part Number	Description	Q'ty	Int		Page	Index
D4553211		PAN HEAD SCREW:M430P3		X/X	O/O as a set	17	18
	03140300N	PAN HEAD SCREW:M4X30	1	X/X		17	105
	07030040N	SPRING WASHER:DIA4	1	X/X		17	109
	07010040N	WASHER:DIA4	1	X/X		17	110

Reissued: 24-Feb-11

Model: Trimmer	Date: 04-Mar-09	No.: RD455001c
----------------	-----------------	----------------

RTB Reissue

The items in bold italics have been corrected.

Subject: Firmware Release Note: Trimmer		Prepared by: J. Ohno	
From: PPBG Service Planning Dept.			
Classification:	<input type="checkbox"/> Troubleshooting <input type="checkbox"/> Mechanical <input type="checkbox"/> Paper path <input type="checkbox"/> Product Safety	<input type="checkbox"/> Part information <input type="checkbox"/> Electrical <input type="checkbox"/> Transmit/receive <input checked="" type="checkbox"/> Other ()	<input type="checkbox"/> Action required <input type="checkbox"/> Service manual revision <input type="checkbox"/> Retrofit information <input type="checkbox"/> Tier 2

This RTB has been issued to announce the firmware release information for the **Trimmer**.

Version	Program No.	Effective Date	Availability of RFU
15.280:16	D4555510D	February 2011 producion	Available
15.270:15	D4555510C	September 2010 production	Available
15.24:13	D4555510B	February 2009 production	Available
15.23:13	D4555510A	1st Mass production	Available

Note: Definition of Availability of RFU
“Available”: The firmware can be updated via RFU or SD card.

“Not available”: The firmware can only be updated via SD card.

Version	Modified Points or Symptom Corrected
15.280:16	Symptoms Corrected: <i>After powering on the machine, the control panel does not indicate the Trimmer Unit TR5020 even when the configuration consists the Trimmer Unit TR5020.</i>
15.270:15	The Trimmer is supported by the Pro C901/C901S. Symptoms Corrected: <ul style="list-style-type: none"> • With the Cooling Fan Unit Type 5000 installed the actual trim width results in 10mm even when set to 20mm. • Pro C901/C901S installed with the Trimmer Unit TR5020 causes jams when saddle-stitching the output scanned on the exposure glass. • SC990 occurs on the mainframe after an SC on the Trimmer Unit TR5020. • Jam occurs on the Trimmer Unit TR5020 when trimming a saddle-stitched booklet after saddle-stitching the output scanned on the exposure glass. • SC is not indicated even when sheets are fed while the Cutter Motor is not running (due to a harness disconnection).
15.24:13	Problem to be Solved <ul style="list-style-type: none"> • Occurrence of JAM437
15.23:13	1st Mass production

Reissued:23-Aug-11

Model: Trimmer Unit TR5020 (D455)	Date: 18-Aug-11	No.: RD455004a
-----------------------------------	-----------------	----------------

RTB Reissue

The item in italics has been corrected.

Subject: Parts Info – cutter section		Prepared by: T. Komori	
From: PP Service Planning Department 1G			
Classification:	<input type="checkbox"/> Troubleshooting <input type="checkbox"/> Mechanical <input type="checkbox"/> Paper path <input type="checkbox"/> Product Safety	<input checked="" type="checkbox"/> Part information <input type="checkbox"/> Electrical <input type="checkbox"/> Transmit/receive <input type="checkbox"/> Other ()	<input type="checkbox"/> Action required <input type="checkbox"/> Service manual revision <input type="checkbox"/> Retrofit information <input type="checkbox"/> Tier 2

Change: Parts were added

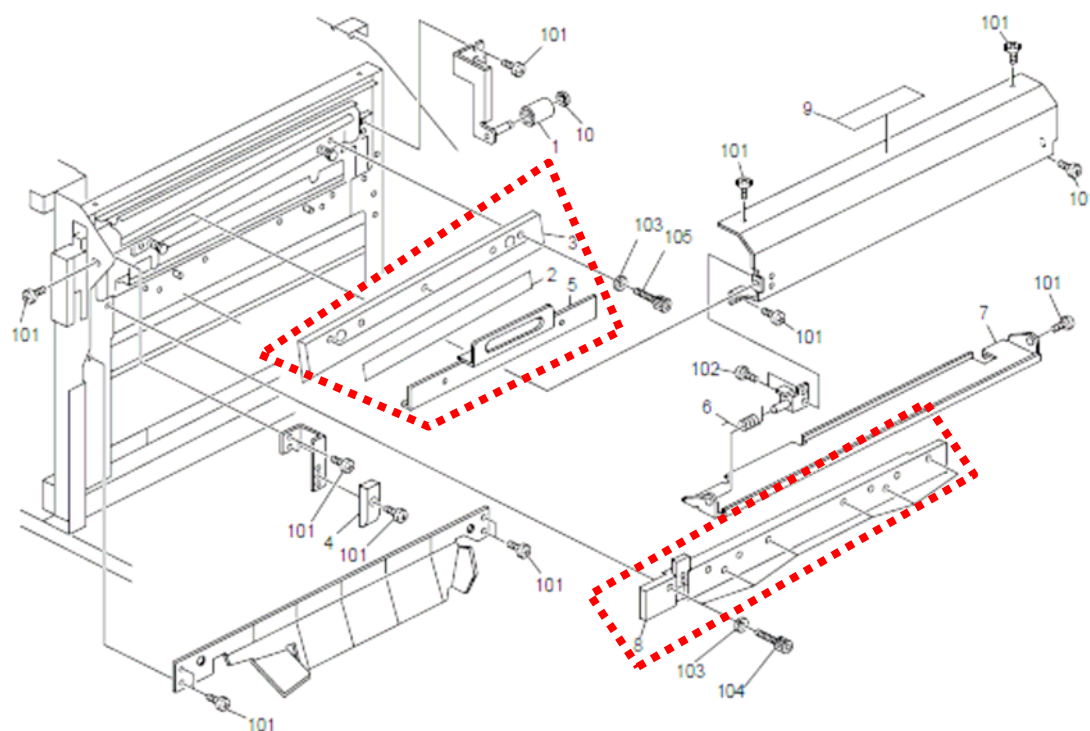
Reason: To allow easier purchase order of the cutter assembly

New Part Number	Description	Q'ty	Page	Index	Note
D4551381	CUTTER:YZ3-08400095:ASS'Y	1	23	11	Add
D4551382	DRIVER	1	23	12	Add

D4551381 includes the following items.

P/N	Description	Q'ty	Page	Index
D4551381	D4551139 COVER:CUTTER:YZ3-08404811	1	23	5
	D4551190 CUTTER:LOWER:YZ3-08141002:ASS'Y	1	23	8
	D4551215 CUTTER:UPPER:YZ3-08142001:ASS'Y	1	23	3
	D4551218 SHEET:CUTTER:YZ4-08142051	1	23	2
	D4553128 PAN HEAD SCREW:M4X6(P2)	2	-	-
	D4551382 DRIVER*	1	23	12

* "DRIVER" is a hexagon wrench which should be used when replacing the cutter assembly.



Model: Trimmer Unit TR5020 (D455)		Date: 22-Sept-11	No.: RD455005
Subject: Adjustment of the trim volume		Prepared by: T. Komori	
From: PP Service Planning Department 1G			
Classification:	<input type="checkbox"/> Troubleshooting <input type="checkbox"/> Mechanical <input type="checkbox"/> Paper path <input type="checkbox"/> Product Safety	<input checked="" type="checkbox"/> Part information <input type="checkbox"/> Electrical <input type="checkbox"/> Transmit/receive <input type="checkbox"/> Other ()	<input type="checkbox"/> Action required <input type="checkbox"/> Service manual revision <input type="checkbox"/> Retrofit information <input type="checkbox"/> Tier 2

Change: Addition of a part

Reason: To adjust the trim volume

New Part Number	Description	Q'ty	Page	Index	Note
D4551350	HOLDER:SENSOR:YZ4-08407218	1	13	8	Add

There are two ways to calibrate the trim volume as follows.

#1 Shifting the current sensor bracket

#2 Replacing the current sensor bracket with the "modified" sensor bracket

Please try method#1 first. If this cannot solve the problem, please do #2.

NOTE

- The blade could be damaged if the trim volume is set too low.
Please inform your customers that the adjustment on the operation panel must be made carefully to avoid poor cuts after replacing with the modified bracket.

Method #1 Shifting the current sensor bracket

- Turn off the machine, and disconnect the cable.



- Remove the covers as shown in the diagram.

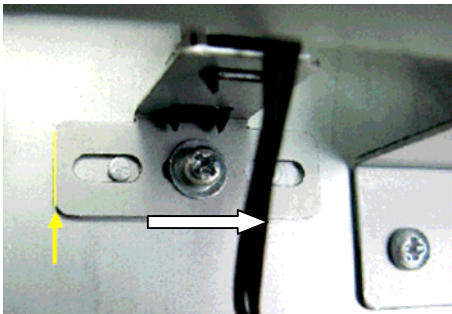
Model: Trimmer Unit TR5020 (D455)

Date: 22-Sept-11

No.: RD455005



3. Identify the sensor.



4. Move the bracket in the direction of the arrow (decrease in trim volume).
Check the trim volume.

NOTE

DO NOT shift the sensor bracket in the opposite direction (increase in trim volume) as this may cause damage to the machine due to interference with the registration unit.

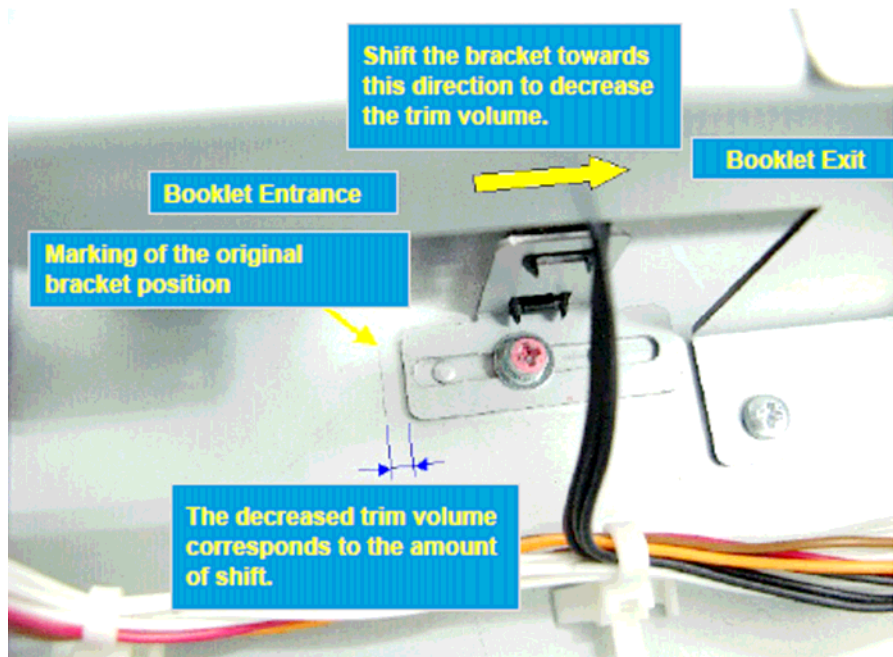
5. Reassemble the unit when the desired volume is obtained. If not satisfy the customer's demand, please go method #2.

Method#2 Replacing the current sensor bracket with the "modified" sensor bracket

1. Mark the bracket position. Place a mark at the position shown below by scoring the surface of the plate with a tool as shown in the photo.
2. Unfasten the screw and remove the sensor with the bracket.



3. Reattach the sensor to the modified bracket, **D4551350**.



4. Install the modified sensor bracket.
Shift the bracket sideways according to the desired adjustment using the marked line for guidance.
5. Check the trim volume.
6. Reassemble the unit when the desired volume is obtained.

Model: Trimmer Unit TR5020 (D455)		Date: 25-Oct-11	No.: RD455006
Subject: Part Changes (Color of the conveyer belt)		Prepared by: A. Takada	
From: PP Tech Service Dept., 1st PP Tech Service Sect.			
Classification:	<input type="checkbox"/> Troubleshooting <input type="checkbox"/> Mechanical <input type="checkbox"/> Paper path <input type="checkbox"/> Product Safety	<input checked="" type="checkbox"/> Part information <input type="checkbox"/> Electrical <input type="checkbox"/> Transmit/receive <input type="checkbox"/> Other ()	<input type="checkbox"/> Action required <input type="checkbox"/> Service manual revision <input type="checkbox"/> Retrofit information <input type="checkbox"/> Tier 2

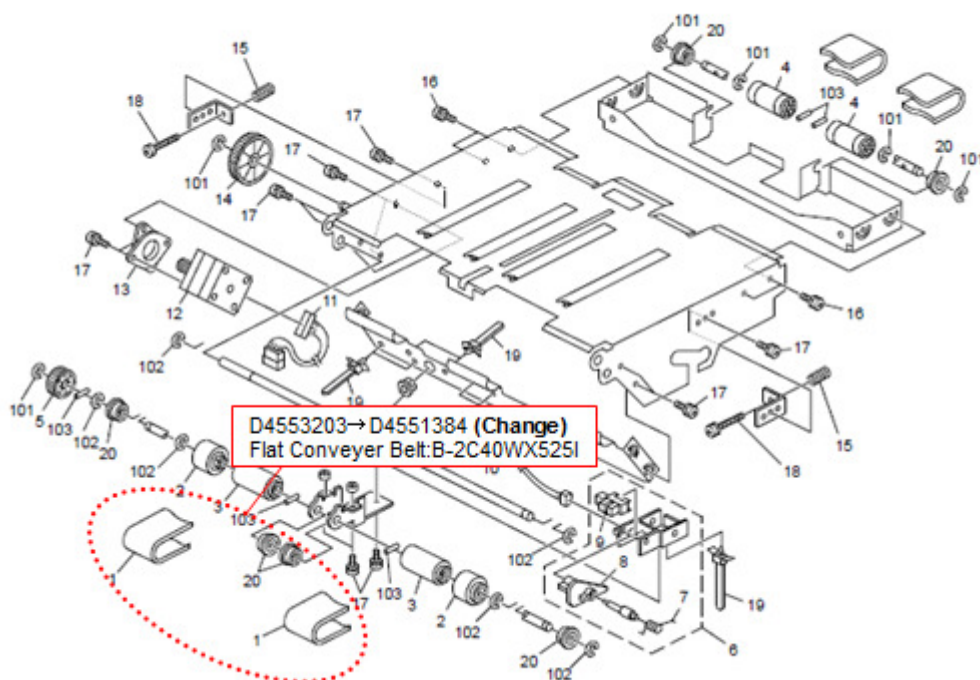
Change: Color of the Flat Conveyer Belt was changed from Black to White.

Reason: To prevent image contamination when correcting skew

Trimmer Unit TR5020 (D455)

Old Part Number	New Part Number	Description	Q'ty	Int	Page	Index	Note
D4553203	D4551384	Flat Conveyer Belt:B-2C40WX525I	2	X/O	26	1	

13.Paper Exit Section 2 (D455)



Model: Trimmer Unit TR5020 (D455)		Date: 25-Nov-11	No.: RD455007
Subject: Part Changes (Moveable guide & Tray frame)		Prepared by: A. Takada	
From: PP Tech Service Dept., 1st PP Tech Service Sect.			
Classification:	<input type="checkbox"/> Troubleshooting <input type="checkbox"/> Mechanical <input type="checkbox"/> Paper path <input type="checkbox"/> Product Safety	<input checked="" type="checkbox"/> Part information <input type="checkbox"/> Electrical <input type="checkbox"/> Transmit/receive <input type="checkbox"/> Other ()	<input type="checkbox"/> Action required <input type="checkbox"/> Service manual revision <input type="checkbox"/> Retrofit information <input type="checkbox"/> Tier 2

Change: Shape of the following 2 parts

- a) Shape of the moveable Guide (D4551349).
- b) Shape of the Tray Frame (D4556139) and addition of related parts

Reason: a) To secure higher accuracy in the positioning of the booklet for cutting
 b) To correspond with the added switch for the limitless feed function

Trimmer Unit TR5020 (D455)

a) Modification to secure higher accuracy in booklet position for cutting

Old Part Number	New Part Number	Description	Q'ty	Int	Page	Index	Note
D4551349	D4551383	Guide:Moveable:YZ3-08407616	2	X/O	16	4	

b) Modification to correspond with the limitless feeding switch

Old Part Number	New Part Number	Description	Q'ty	Int	Page	Index	Note
D4556136	D4556139	Frame:Tray:YZ3-08409502	1	X/O	29	6	
-	D4553225	PAN HEAD SCREW:M2X10(P3)	2		29	12	
-	D4556140	BRACKET:MICRO SWITCH:YZ4-09069601	1		29	13	

Note

If the Tray Frame is to be replaced for limitless feeding, the 2 parts shown below will also be required in addition to the 3 parts shown in the above table.

- **D4553121 Wire Binder:RSG-100_V0 (Q'ty: 1)**
- **D4553133 Binding Self Tapping Screw:4x8 (Q'ty: 2)**

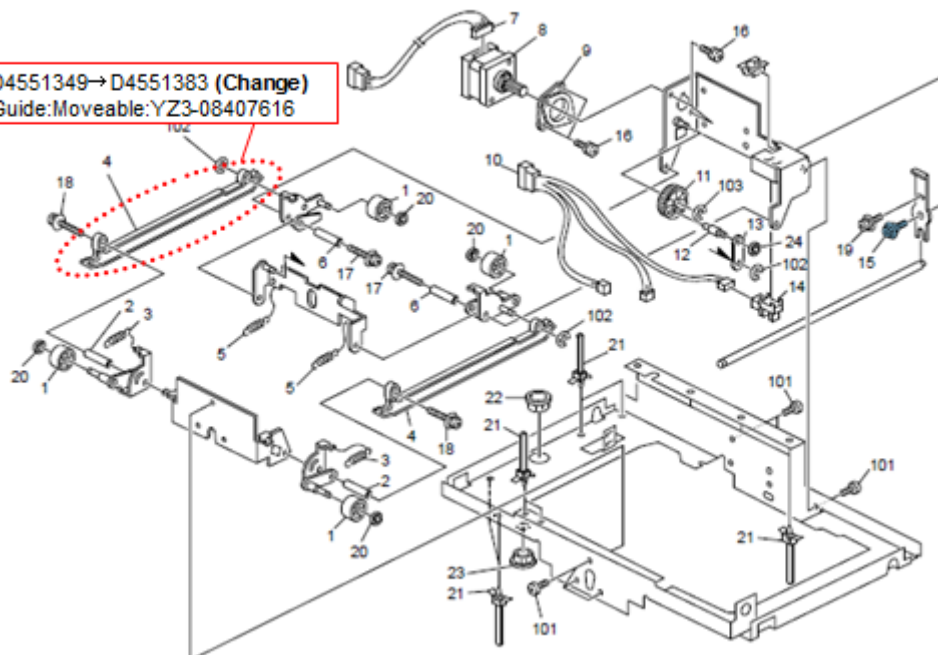
Model: Trimmer Unit TR5020 (D455)

Date: 25-Nov-11

No.: RD455007

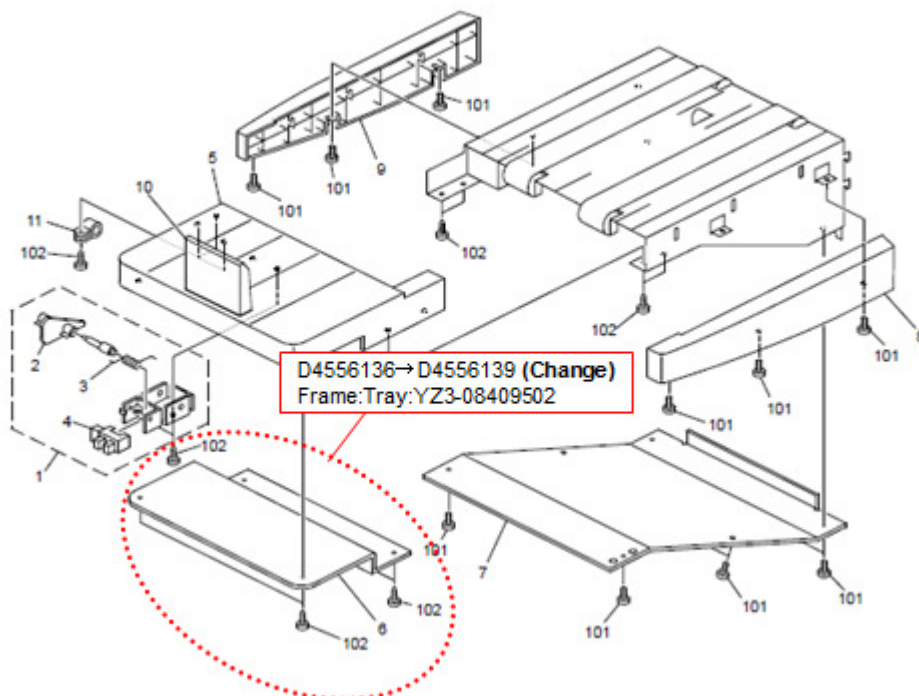
8.Jogger Section 3 (D455)

D4551349→D4551383 (Change)
Guide:Moveable:YZ3-08407616



14.Tray Section 1 (D455)

D4556136→D4556139 (Change)
Frame:Tray:YZ3-08409502



Model: Trimmer Unit TR5020 (D455)		Date: 10-Jun-16	No.: RD455008
Subject: Parts information - FRAME:TRAY		Prepared by: Rie Shohda	
From: 1st Tech Service Sect., MFP/P Tech Service Dept.			
Classification:	<input type="checkbox"/> Troubleshooting <input type="checkbox"/> Mechanical <input type="checkbox"/> Paper path <input type="checkbox"/> Product Safety	<input checked="" type="checkbox"/> Part information <input type="checkbox"/> Electrical <input type="checkbox"/> Transmit/receive <input type="checkbox"/> Other ()	<input type="checkbox"/> Action required <input type="checkbox"/> Service manual revision <input type="checkbox"/> Retrofit information <input type="checkbox"/> Tier 2

Old part number	New part number	Description	Q'ty	Int	Page	Index	Note
-	D4551366	FRAME:TRAY:YZ2-08408122	1	-	31	20	Add

Change: Addition of the part

Reason: To meet requests from the field.

15.Tray Section 2 (D455)

